

City of Madison Landmarks Commission

APPLICATION



City of Madison Planning Division, 126 S Hamilton Street, P.O. Box 2985, Madison, WI 53702-2985

1. LOCATION

Project Address: 413 S. Ingersoll St. Aldermanic District:

2. PROJECT

Project Title / Description: Ruegsegger

This is an application for: (check all that apply)

- Alteration / Addition to a Designated Landmark
- Land Division/Combination of Designated Landmark site
- Alteration / Addition to a building adjacent to a Designated Landmark
- Alteration / Addition to a building in a Local Historic District (specify):
 - Mansion Hill Third Lake Ridge First Settlement
 - University Heights Marquette Bungalows
- Land Division/Combination in a Local Historic District (specify):
 - Mansion Hill Third Lake Ridge First Settlement
 - University Heights Marquette Bungalows
- New Construction in a Local Historic District (specify):
 - Mansion Hill Third Lake Ridge First Settlement
 - University Heights Marquette Bungalows
- Demolition
- Variance from the Historic Preservation Ordinance (Chapter 41)
- Referral from Common Council, Plan Commission, or other referral
- Landmark Nomination/Rescission or Historic District Nomination/Amendment
(Please contact the Historic Preservation Planner for specific submission requirements.)
- Other (specify):

PLANNING DIVISION USE ONLY

Legistar #

3. APPLICANT

Applicant's Name: Company:

Address:

Telephone: E-mail:

Property Owner (if not applicant): Mark Ruegsegger

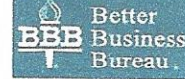
Address: 4104 W. 123rd St., Deawville, KS 66209

Property Owner's Signature: [Signature] Date: 4/25/17

NOTICE REGARDING LOBBYING ORDINANCE: If you are seeking approval of a development that has over 40,000 square feet of non-residential space, or a residential development of over 10 dwelling units, or if you are seeking assistance from the City with a value of \$10,000 (including grants, loans, or similar assistance), then you likely are subject to Madison's lobbying ordinance (Sec. 2.49, MGC). You are required to register and report your lobbying. Please consult the City Clerk's Office for more information. Failure to comply with the lobbying ordinance may result in fines.

4. APPLICATION SUBMISSION REQUIREMENTS (see checklist on reverse)

All applications must be filed by 4:30 p.m. on the submission date with the Preservation Planner, the Department of Planning & Community & Economic Development, Planning Division, located at 126 S Hamilton Street. Applications submitted after the submittal date or incomplete applications will be postponed to the next scheduled filing time.



4/25/17

City of Madison Landmarks Commission

126 S Hamilton Street

Madison, WI 53701-2985

Siding Unlimited will remove and dispose of the existing wood siding and we will furnish and install the following items:

- Includes dumpster being placed on street with barricade flashers from the city – permit included
- **CertainTeed Monogram .046 Vinyl Siding in Cypress (lifetime warranty)**
 - 4” lap size
 - **Dow 3/8” closed cell insulation**, tape seams on insulation and caulk all door and window openings with solvent based caulk – Additional 1.5 R-Value
 - Includes flashing around window/doors, & along brick ledges for higher energy efficiencies - We wrap foundation to structure around perimeter of home and return back to foundation wall for preventative air/water infiltration
 - Install aluminum trim surrounds on windows & entry doors in 2.5” brick mold wrapped in Rugged Canyon coil and caulked – **Not removing storms before trimming**
 - All 3 gable vents, light mounting blocks, and misc. trim pieces are included
- **Mastic aluminum soffit & fascia material for house – Rugged Canyon**
 - Solid panels used because the house attic ventilates with gable vents only
 - Includes replacing rotten drip ledge (approx. 60lf) and wrapping in aluminum to match siding/trim
 - Includes replacing estimated amount of rotten wood found during initial inspection/site visit – additional repairs are handled on time/material basis

Siding Unlimited will supply dumpster, clean up and remove all debris

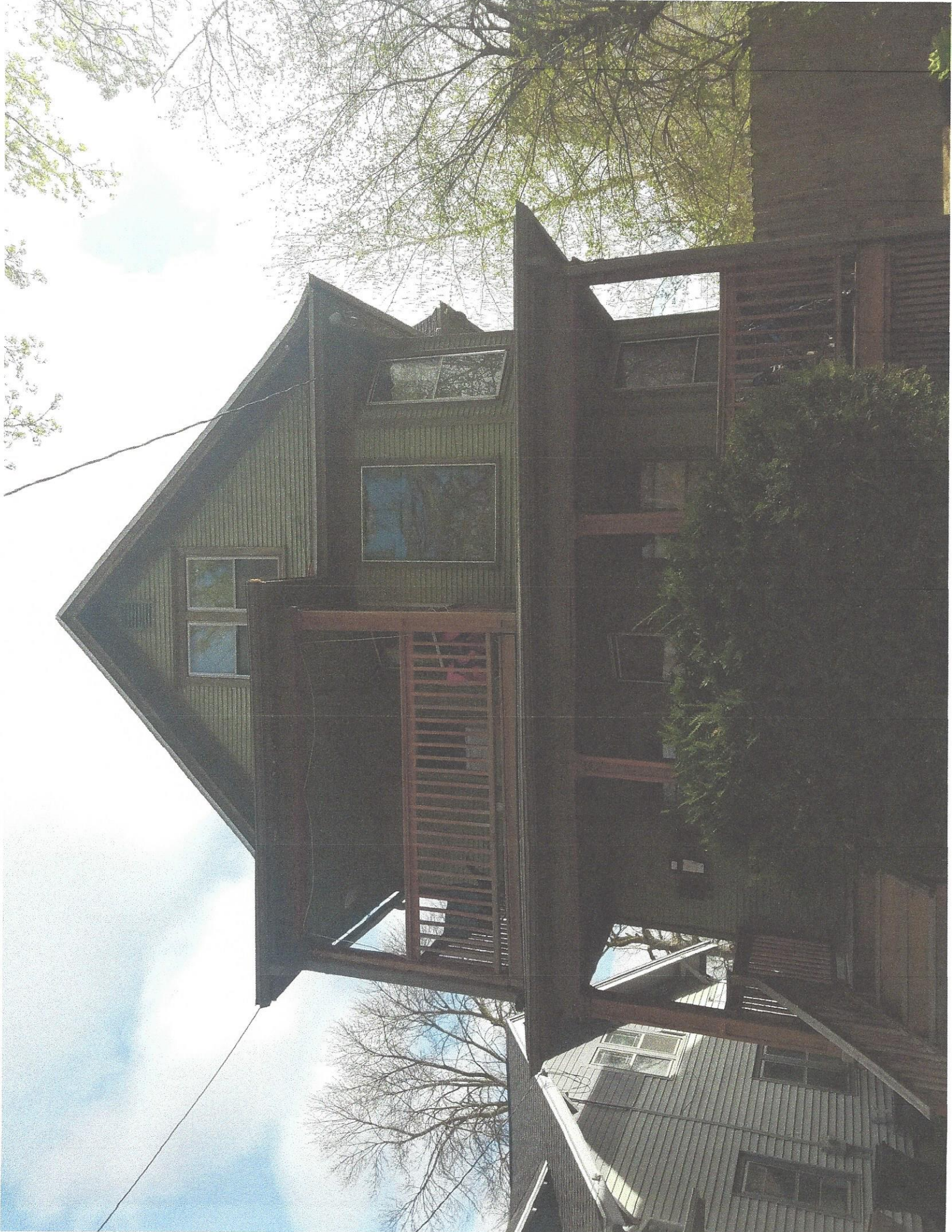
Siding Unlimited includes a 5year Sure Start Craftsmanship/Workmanship warranty

665 Larry Court • Waukesha, Wisconsin 53186 • 262-567-4513

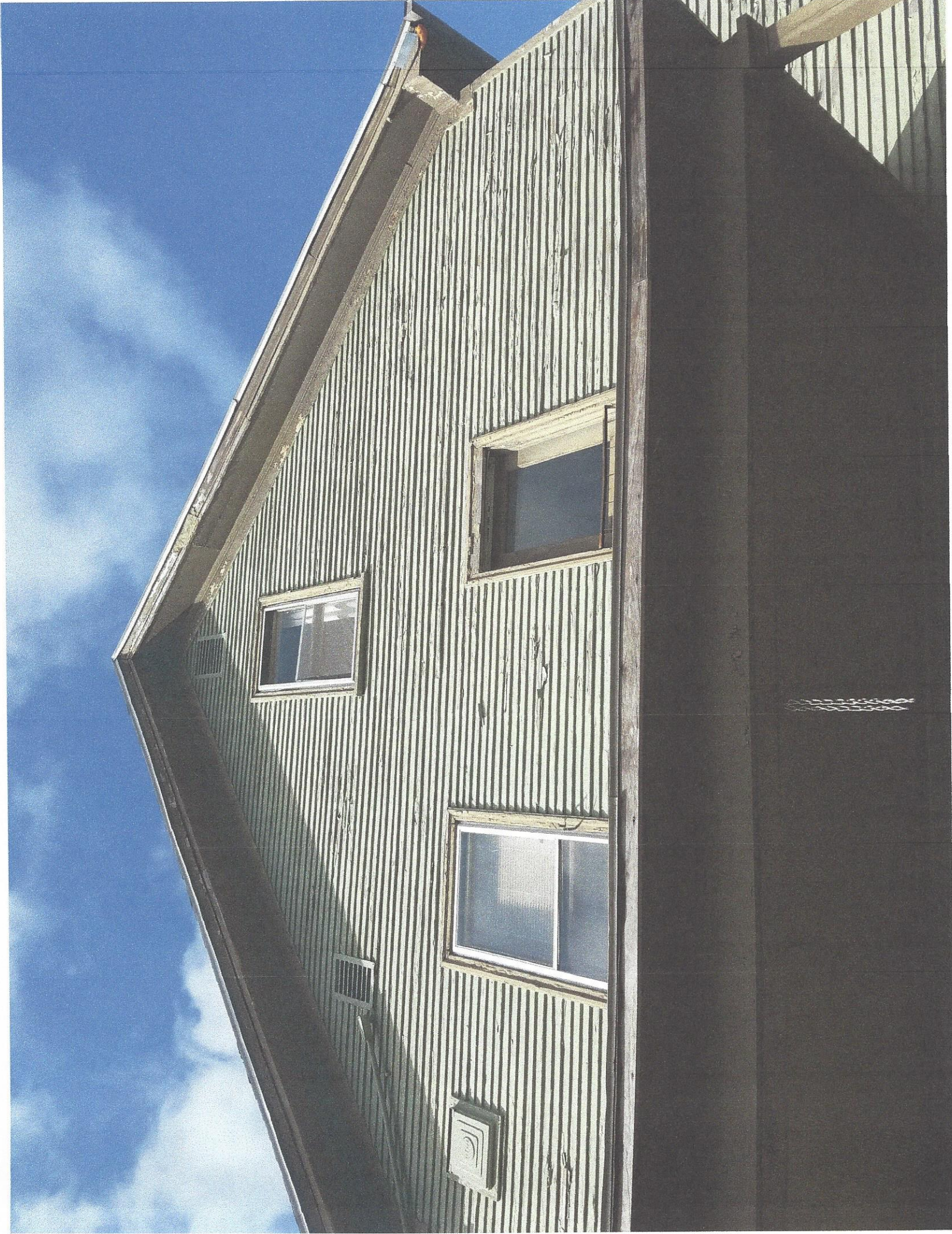














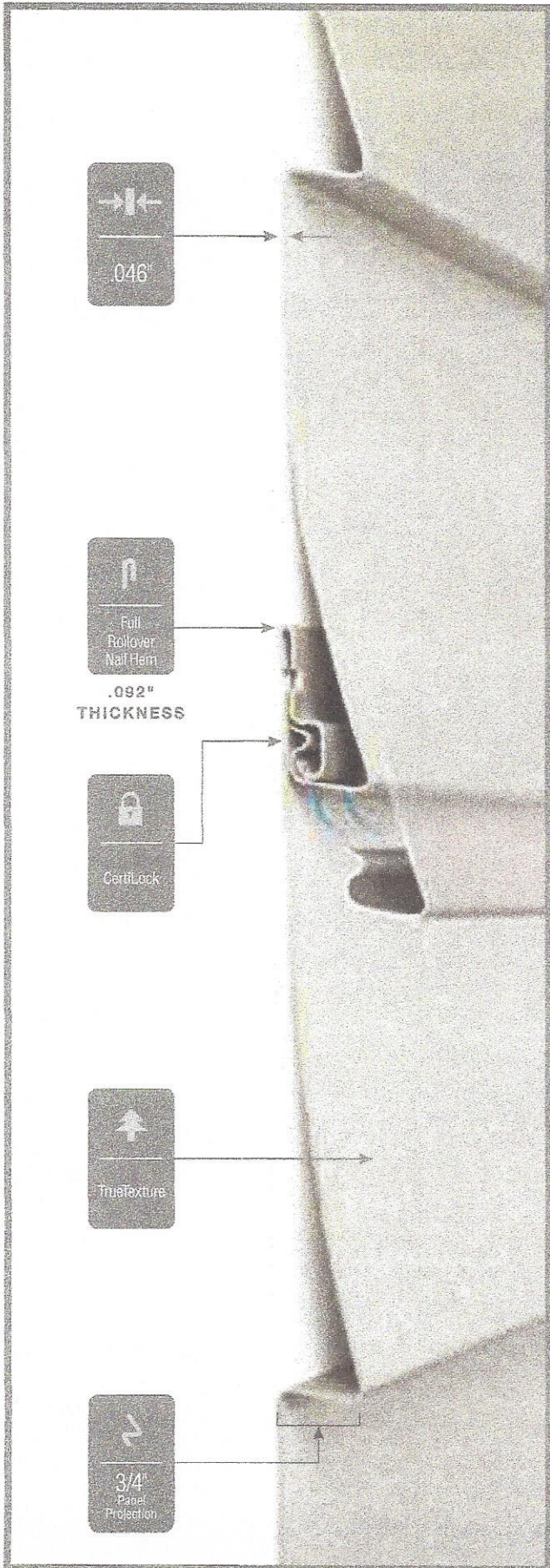
Monogram®

046'	3	41	Up to 220 mph	Full Rollover Nail Hem	3/4" Panel Protection	TrueTexture	CertiLock	Lifetime Limited Warranty	STUDfinder	Class A Flame Spread	PermaColor Fade Protection	Longer Lengths Available	Low Maintenance	Drainability



Siding: Monogram Double 4" Clapboard in sandpiper.
 Trim: Vinyl Carpentry® & Restoration Millwork®.

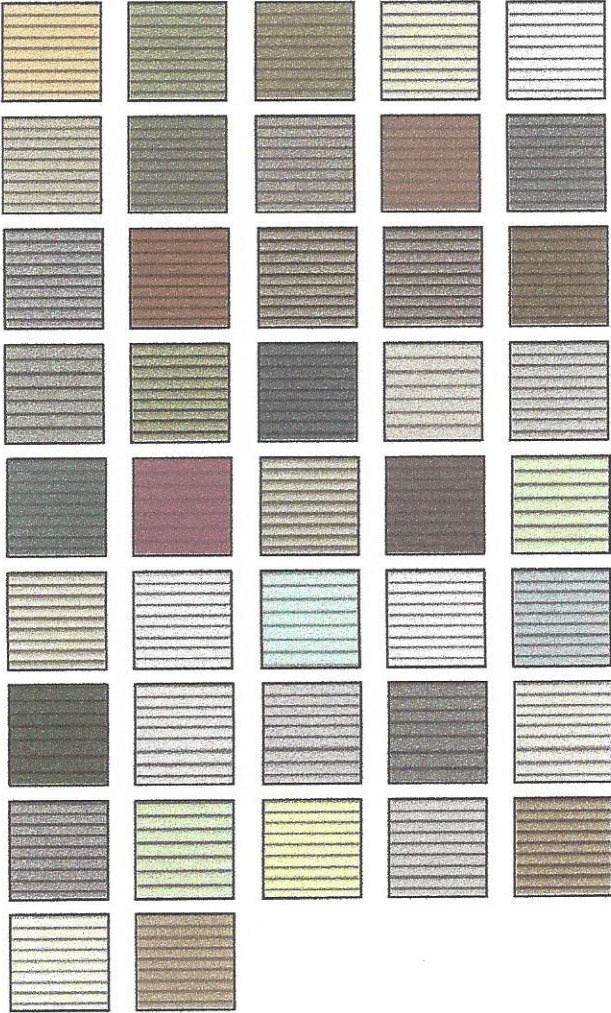




	D4 Clapboard	D5 Clapboard	D5 Dutchlap	XL D4 Clapboard	XL D5 Dutchlap
Arbor Blend**	●		●		
Arctic Blend**	●		●		
Weathered Blend**	●		●		
Frontier Blend**	●		●		
Timber Blend**	●		●		
Canyon Blend*	●		●		
Meadow Blend*	●		●		
Glacier Blend*	●		●		
Autumn Red*	●	●	●		
Terra Cotta*	●				
Mountain Cedar*	●				
Sable Brown*	●	●	●	●	
Hearthstone*	●	●	●		
Suede	●	●	●		
Spruce*	●	●	●	●	
Forest*	●	●	●		
Ivy Green*	●				
Pacific Blue*	●	●	●	●	
Flagstone*	●	●	●		
Charcoal Gray*	●	●	●	●	
Granite Gray	●	●	●	●	●
Sterling Gray	●	●	●	●	●
Bermuda Blue	●				
Oxford Blue	●	●	●	●	●
Seagrass	●	●	●		
Cypress	●	●	●	●	●
Green Tea	●				
Linen	●	●	●		
Silver Ash	●			●	●
Herringbone	●	●	●		
Sandstone Beige	●	●	●	●	●
Desert Tan	●	●	●	●	●
Natural Clay	●	●	●	●	●
Savannah Wicker	●	●	●	●	●
Light Maple	●	●	●	●	●
Buckskin	●	●	●		
Sandpiper	●	●	●		
Heritage Cream	●	●	●	●	●
Autumn Yellow	●				
Snow	●	●	●		
Colonial White	●	●	●	●	●

*Deluxe Colors
**Premium Colors

HOME / SIDING / PRODUCTS / MONOGRAM®



MONOGRAM®

[OVERVIEW](#)[TECHNICAL INFO](#)[INSTALLATION](#)[WARRANTY](#)[SUSTAINABILITY](#)[FIND A PRO](#)

The Natural Look of Painted or Stained Cedar

Whether it is a Victorian reproduction, a New England saltbox or a modern beach house get-away, we offer the rich look of natural cedar without the expense and heavy maintenance. You can create a home to be proud of with Monogram's designer palette of over 40 siding and trim colors. Inspired by nature, these colors are designed to harmonize home and environment.

Widest color section in the industry:

33 low-gloss solid colors

8 low-gloss wood-tone blends

40 coordinating trim colors

Three Classic Styles:

Double 4" Clapboard

Double 5" Clapboard

Double 5" Dutchlap

Monogram Offers:

- Heavy-Duty .046" thickness
- TrueTexture™ rough cedar finish molded from real cedar boards
- Patented STUDfinder™ is designed for accurate and secure installation
- RigidForm™ 220 Technology has been tested to withstand wind load pressures up to 220 mph
- CertiLock™ self-aligning, post-formed positive lock
- 3/4" panel projection
- Virtually maintenance free, never needs painting
- Class 1(A) fire rating
- Lifetime limited warranty

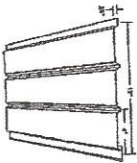
Works with Monogram® XL length siding

Envoy® Aluminum Soffit

Product Code/Description

Color Availability

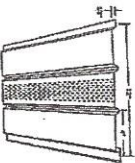
SAS12319
Envoy
Triple 4" Solid
U-Groove Soffit
 Finish: Alumalure 2000®
 Nominal .019 Thick
 Length: 12"
 Exposure: 12"
 20 Pcs./Ctn.
 240 Sq. Ft./Ctn.
 77.7 Lbs./Ctn.



LCAS12319

Envoy
Triple 4" Center Lanced
U-Groove Soffit

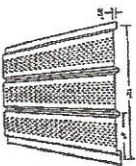
Finish: Alumalure 2000®
 Nominal .019 Thick
 4.4 Sq. In. M.F.A./Ft.
 Length: 12"
 Exposure: 12"
 20 Pcs./Ctn.
 240 Sq. Ft./Ctn.
 77.7 Lbs./Ctn.



LEAS12319

Envoy
Triple 4" Full Lanced
U-Groove Soffit

Finish: Alumalure 2000®
 Nominal .019 Thick
 13.2 Sq. In. M.F.A./Ft.
 Length: 12"
 Exposure: 12"
 20 Pcs./Ctn.
 240 Sq. Ft./Ctn.
 77.7 Lbs./Ctn.



Notes:

White
 Almond
 Black
 Brandy Wood
 Cameo
 Charcoal Grey
 Classic Cream
 Dark Bronze
 Desert Sand
 Everest
 Evergreen
 Harbor Grey
 Jefferson Tan
 Light
 London Brown
 Malibu
 Montana Slate
 Mustang
 Mustel Brown
 Pebblestone Clay
 Royal Brown
 Rugged Canyon
 Russet Red
 Sandstone
 Scottish Thistle
 Silver Grey
 Terra Bronze
 Tuscan Olive
 Victorian Grey
 Viceroy

MASTIC HOME EXTERIORS
PERFORMANCE METALS
 ENVROY ALUMINUM SOFFIT

V-GROOVE • SINGLE 6" • DOUBLE 6" U-GROOVE • DOUBLE 6" • TRIPLE 4" • QUAD 4"

Manufactured from only the highest-grade aluminum, Envroy, our strongest and hardest aluminum soffit, meets or exceeds Q801 standards — delivering rigid performance across long spans.



V-GROOVE

- Our v-groove designs replicate the classic look of tongue-and-groove wood soffit more closely than any other metal soffit system.
- The industry's only v-groove in a 6" width, our design helps eliminate sagging and nail facing — a big plus.
- Perforated v-groove offers the most net free ventilation per lineal foot of any aluminum soffit system.



U-GROOVE

- Wider grooves cast a more subtle shadow.
- Helps hide construction imperfections.



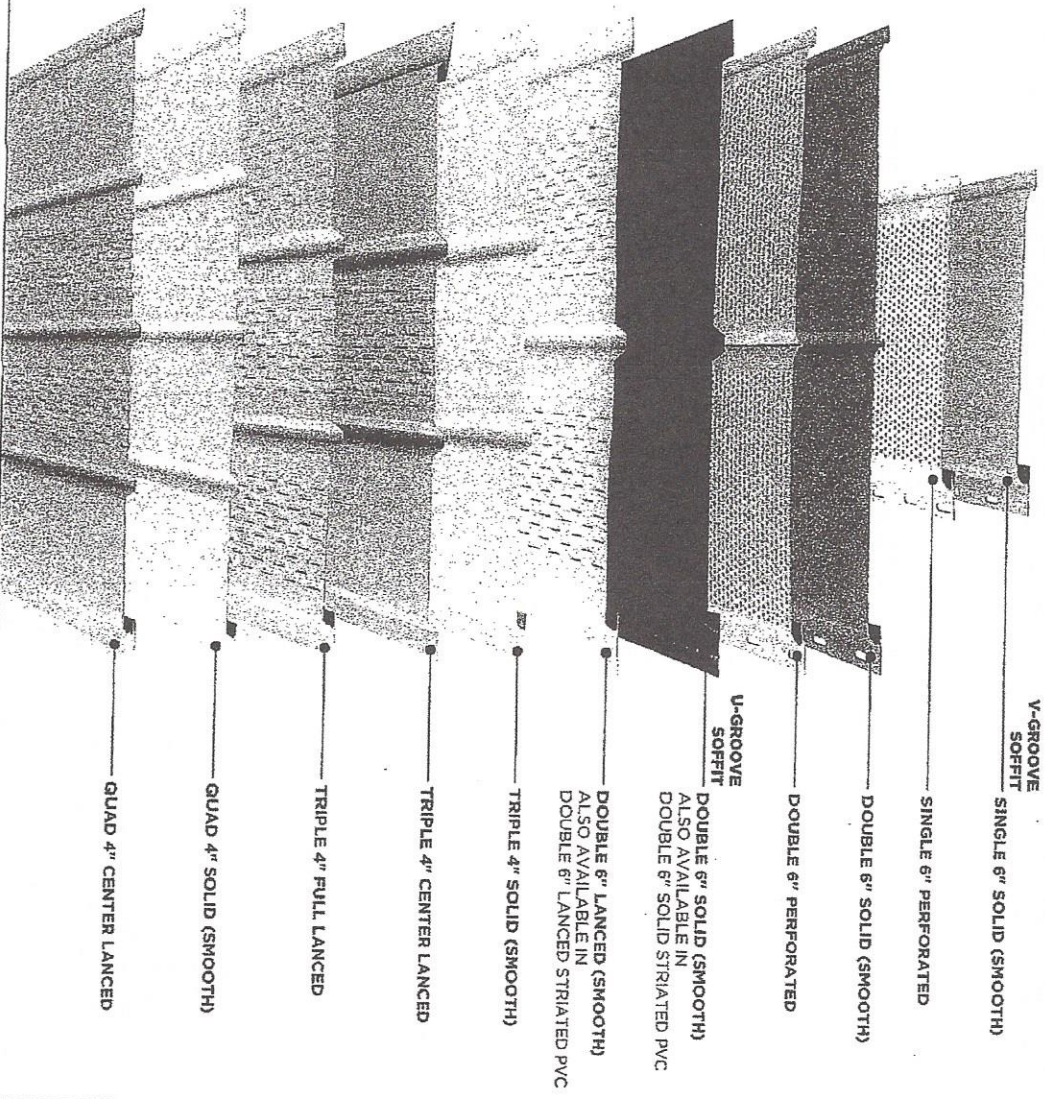
AVAILABLE IN UP TO 28 COLORS
 See Product Spec Guide for complete details.



ALUMALURE® 2000
 This revolutionary finish holds its color and resists the toughest corrosive elements — even UV radiation and polluted air. Applied in a two-coat process, Alumalure® 2000 is a combination of corrosion-inhibiting primer and an ultra-tough, low-maintenance topcoat.



W.P.P. LIMITED LIFETIME WARRANTY
 Premium guarantee of lasting quality and peace of mind — backed by Mastic, a trusted industry leader for 50+ years (see warranty for complete details).



V-GROOVE SOFFIT
 SINGLE 6" SOLID (SMOOTH)

SINGLE 6" PERFORATED

DOUBLE 6" SOLID (SMOOTH)

DOUBLE 6" PERFORATED

U-GROOVE SOFFIT

DOUBLE 6" SOLID (SMOOTH)
 ALSO AVAILABLE IN
 DOUBLE 6" SOLID STRIATED PVC

DOUBLE 6" LANCED (SMOOTH)
 ALSO AVAILABLE IN
 DOUBLE 6" LANCED STRIATED PVC

TRIPLE 4" SOLID (SMOOTH)

TRIPLE 4" CENTER LANCED

TRIPLE 4" FULL LANCED

QUAD 4" SOLID (SMOOTH)

QUAD 4" CENTER LANCED

Economy Triple 4" Solid Aluminum Soffit

Triple 4" Aluminum Soffit

