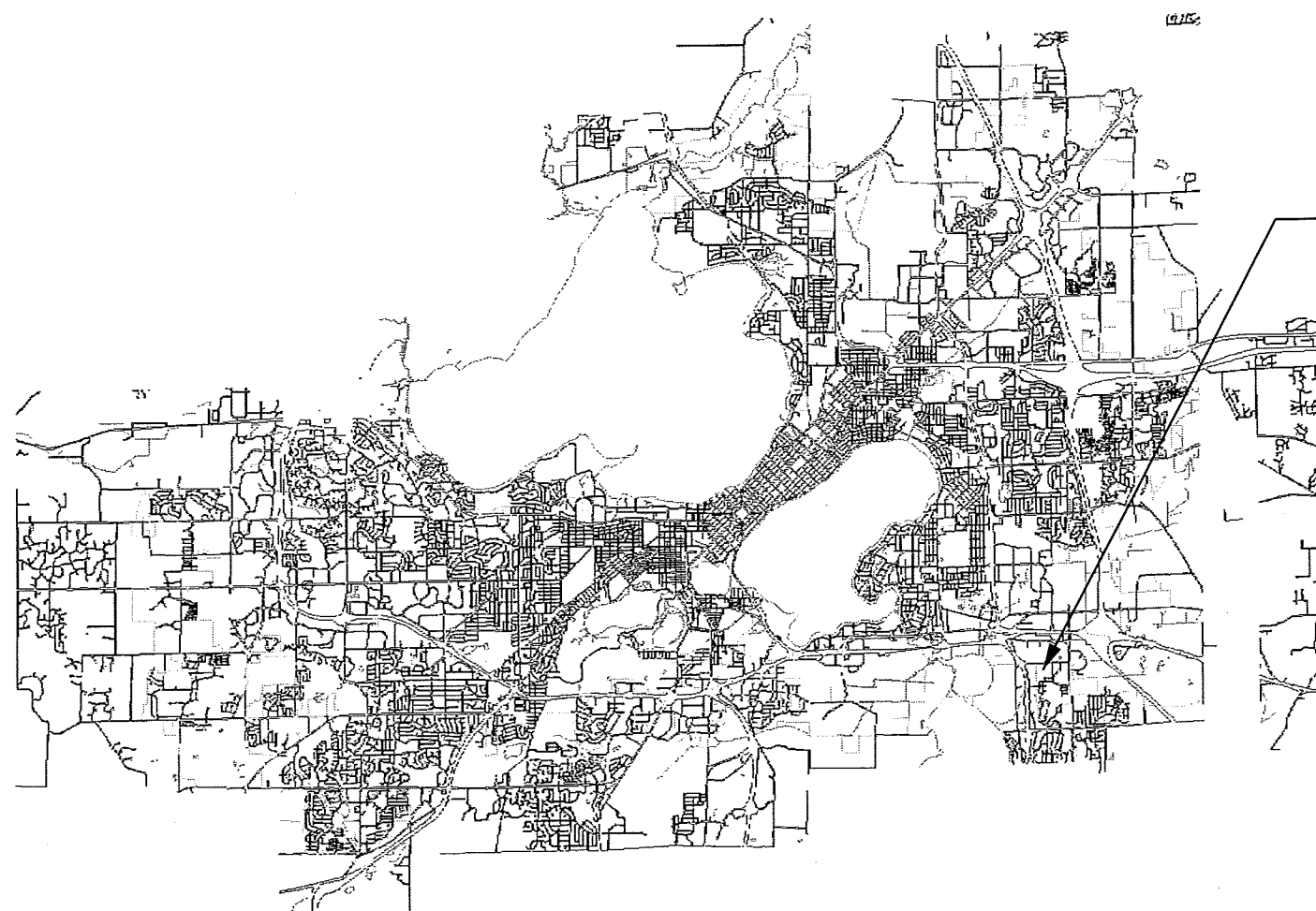


OWL CREEK PARK DEVELOPMENT - PHASE 2
CONTRACT 7526



OWL CREEK PARK
23 HORNED OWL DRIVE
MADISON, WI 53718

City of Madison
Department of Public Works
PARKS DIVISION

City-County Building, Suite 104
210 Martin Luther King, Jr. Blvd.
PO Box 2987
Madison, WI 53701-2987

play
**MADISON
PARKS**



PROJECT:
*OWL CREEK
PARK
DEVELOPMENT
PHASE 2*

Although every effort has been made in preparing these plans and checking them for accuracy, the contractor and subcontractors must check all details and dimensions of their trade and be responsible for the same.

ITEM	DATE
Drawn by: KK	06-03-2015

PUBLIC WORKS PROJECT #:
7526

SHEET TITLE:

SHEET NUMBER:

City of Madison
Department of Public Works
PARKS DIVISION

City-County Building, Suite 104
210 Martin Luther King, Jr. Blvd.
PO Box 2987
Madison, WI 53701-2987

play
**MADISON
PARKS**

Graphical Scale
0 60 ft



PROJECT:
**OWL CREEK
PARK
IMPROVEMENTS
PHASE 2**

**OWL CREEK PARK
23 HORNED OWL DR
MADISON, WI 53718**

Although every effort has been made in preparing these plans and checking them for accuracy, the contractor and subcontractors must check all details and dimensions of their trade and be responsible for the same.

ITEM	DATE
Drawn by: KNK	06-03-2015
Approved by:	XX-XX-XXXX

PUBLIC WORKS PROJECT #:
7526

SHEET TITLE:
**PROJECT LOCATION
AND SITE ACCESS**

SHEET NUMBER:
1.1

EXISTING PLAY EQUIPMENT, SURFACING AND CONCRETE BLOCK WALL SHALL BE REMOVED BY THE CITY. SITE SHALL BE RESTORED BY THE CITY.

EXISTING PLAY EQUIPMENT SHALL BE REMOVED AND RELOCATED PER SHEET 1.2 BY THE CONTRACTOR. EXISTING PEA GRAVEL SURFACING AND CONCRETE BLOCK WALLS SHALL BE REMOVED BY THE CITY. SITE SHALL BE RESTORED BY THE CITY.

Existing Play Area

N.I.C.
Installation of concrete pad footings and 28' DIA shelter

N.I.C.
Installation of concrete pad and drinking fountain

CONSTRUCTION ACCESS TO BASKETBALL COURT FROM SNOWY OWL LN. PROTECT EXISTING SURFACES (LAWN, CURB, SIDEWALK, PAVEMENT, ETC.) AND UTILITIES. REPAIR OF SURFACES AND UTILITIES IS INCIDENTAL TO THIS CONTRACT.

TRACKING PAD TO BE INSTALLED BY CITY OF MADISON. REMOVED BY CONTRACTOR. CONSTRUCTION ACCESS FROM SNOWY OWL LN. PROTECT EXISTING SURFACES (LAWN, CURB, SIDEWALK, PAVEMENT, ETC.) AND UTILITIES. REPAIR OF SURFACES AND UTILITIES IS INCIDENTAL TO THIS CONTRACT.

PROPOSED STAGING AREA WITHIN CONSTRUCTION FENCE LIMITS

PROPOSED CONSTRUCTION FENCE. NO CONSTRUCTION OUTSIDE OF FENCE LIMITS.

City of Madison
Department of Public Works
PARKS DIVISION

City-County Building, Suite 104
210 Martin Luther King, Jr. Blvd.
PO Box 2987
Madison, WI 53701-2987

play
**MADISON
PARKS**

Graphical Scale
0 30 ft



PROJECT:
*OWL CREEK
PARK
IMPROVEMENTS
PHASE 2*

*OWL CREEK PARK
23 HORNED OWL DR
MADISON, WI 53718*

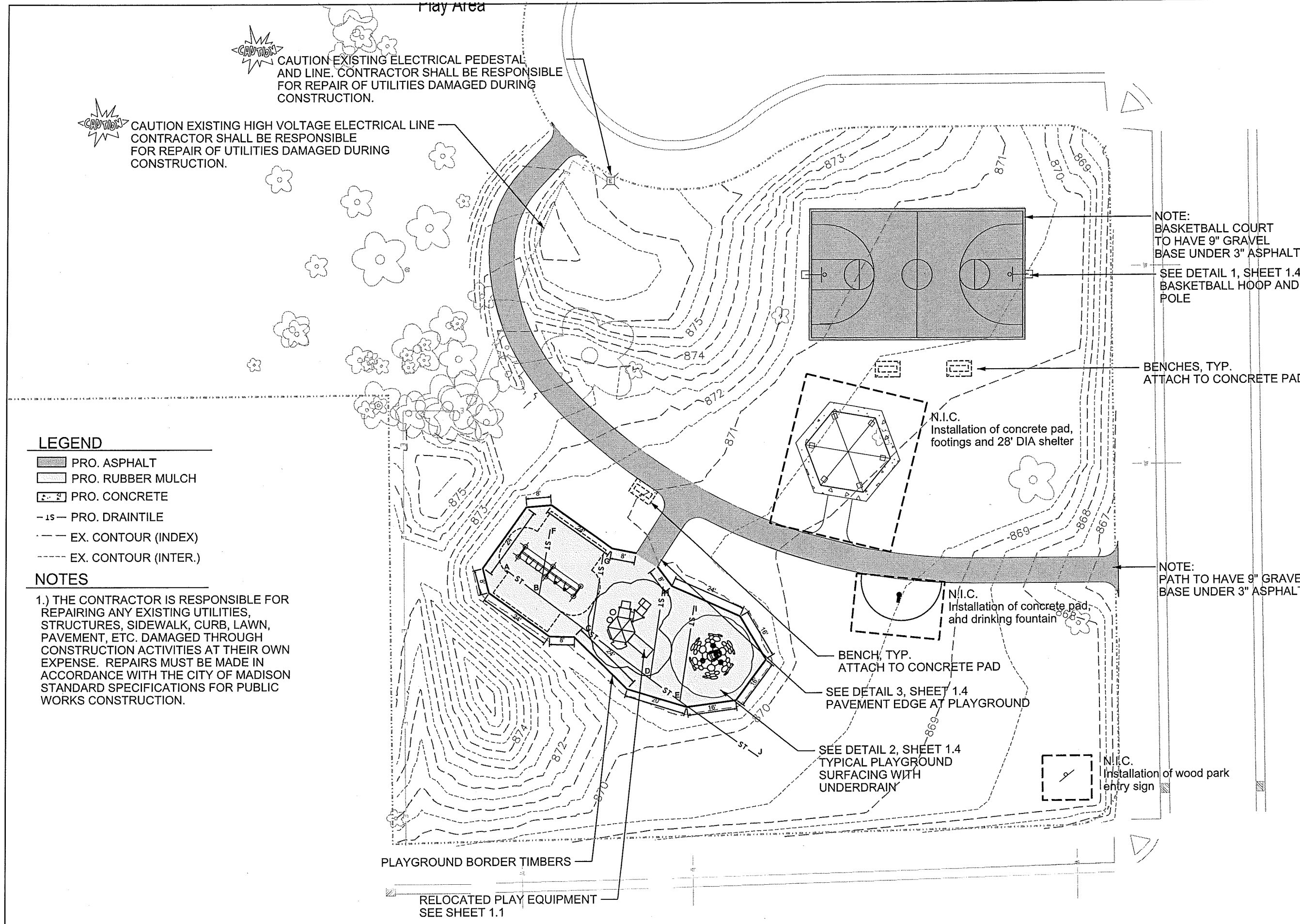
Although every effort has been made in preparing these plans and checking them for accuracy, the contractor and subcontractors must check all details and dimensions of their trade and be responsible for the same.

ITEM	DATE
Drawn by: KNK	06-03-2015
Approved by:	XX-XX-XXXX

PUBLIC WORKS PROJECT #:
7526

SHEET TITLE:
SITE PLAN

SHEET NUMBER:
1.2



CAUTION EXISTING ELECTRICAL PEDESTAL AND LINE. CONTRACTOR SHALL BE RESPONSIBLE FOR REPAIR OF UTILITIES DAMAGED DURING CONSTRUCTION.

CAUTION EXISTING HIGH VOLTAGE ELECTRICAL LINE. CONTRACTOR SHALL BE RESPONSIBLE FOR REPAIR OF UTILITIES DAMAGED DURING CONSTRUCTION.

NOTE: BASKETBALL COURT TO HAVE 9" GRAVEL BASE UNDER 3" ASPHALT

SEE DETAIL 1, SHEET 1.4 BASKETBALL HOOP AND POLE

BENCHES, TYP. ATTACH TO CONCRETE PAD

N.I.C. Installation of concrete pad, footings and 28' DIA shelter

NOTE: PATH TO HAVE 9" GRAVEL BASE UNDER 3" ASPHALT

N.I.C. Installation of concrete pad and drinking fountain

BENCH, TYP. ATTACH TO CONCRETE PAD

SEE DETAIL 3, SHEET 1.4 PAVEMENT EDGE AT PLAYGROUND

SEE DETAIL 2, SHEET 1.4 TYPICAL PLAYGROUND SURFACING WITH UNDERDRAIN

N.I.C. Installation of wood park entry sign

LEGEND

- PRO. ASPHALT
- PRO. RUBBER MULCH
- PRO. CONCRETE
- PRO. DRAINTILE
- EX. CONTOUR (INDEX)
- EX. CONTOUR (INTER.)

NOTES

1.) THE CONTRACTOR IS RESPONSIBLE FOR REPAIRING ANY EXISTING UTILITIES, STRUCTURES, SIDEWALK, CURB, LAWN, PAVEMENT, ETC. DAMAGED THROUGH CONSTRUCTION ACTIVITIES AT THEIR OWN EXPENSE. REPAIRS MUST BE MADE IN ACCORDANCE WITH THE CITY OF MADISON STANDARD SPECIFICATIONS FOR PUBLIC WORKS CONSTRUCTION.

PLAYGROUND BORDER TIMBERS

RELOCATED PLAY EQUIPMENT SEE SHEET 1.1

City of Madison
Department of Public Works
PARKS DIVISION

City-County Building, Suite 104
210 Martin Luther King, Jr. Blvd.
PO Box 2987
Madison, WI 53701-2987

play
**MADISON
PARKS**

Graphical Scale
0 30 ft



PROJECT:
**OWL CREEK
PARK
IMPROVEMENTS
PHASE 2**

**OWL CREEK PARK
23 HORNED OWL DR
MADISON, WI 53718**

Although every effort has been made in preparing these plans and checking them for accuracy, the contractor and subcontractors must check all details and dimensions of their trade and be responsible for the same.

ITEM	DATE
Drawn by: KNK	06-03-2015
Approved by:	XX-XX-XXXX

PUBLIC WORKS PROJECT #:
7526

SHEET TITLE:
**GRADING AND
EROSION CONTROL
PLAN**

SHEET NUMBER:
1.3



CAUTION EXISTING HIGH VOLTAGE ELECTRICAL LINE
CONTRACTOR SHALL BE RESPONSIBLE
FOR REPAIR OF UTILITIES DAMAGED DURING
CONSTRUCTION.



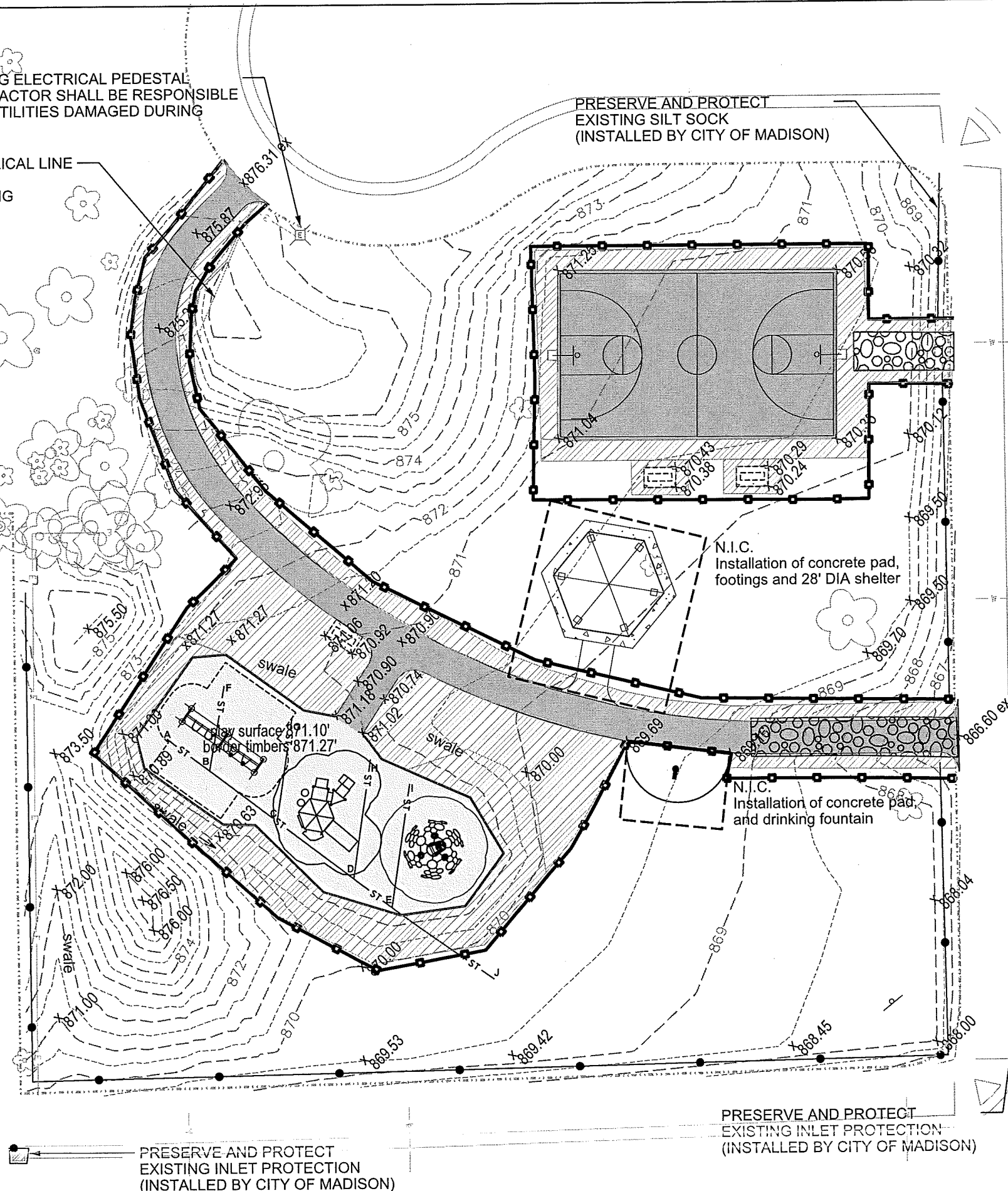
CAUTION EXISTING ELECTRICAL PEDESTAL
AND LINE. CONTRACTOR SHALL BE RESPONSIBLE
FOR REPAIR OF UTILITIES DAMAGED DURING
CONSTRUCTION.

LEGEND

- xXXX.XX PRO. SPOT EL.
- PRO. ASPHALT
- PRO. RUBBER MULCH
- PRO. CONCRETE
- PRO. TOPSOIL, SEED AND EROSION MATTING
- PRO. CONSTRUCTION FENCE
- IS - PRO. DRAINTILE
- EX. CONSTRUCTION ENTRANCE
- EX. SILT SOCK
- EX. CONTOUR (INDEX)
- EX. CONTOUR (INTER.)

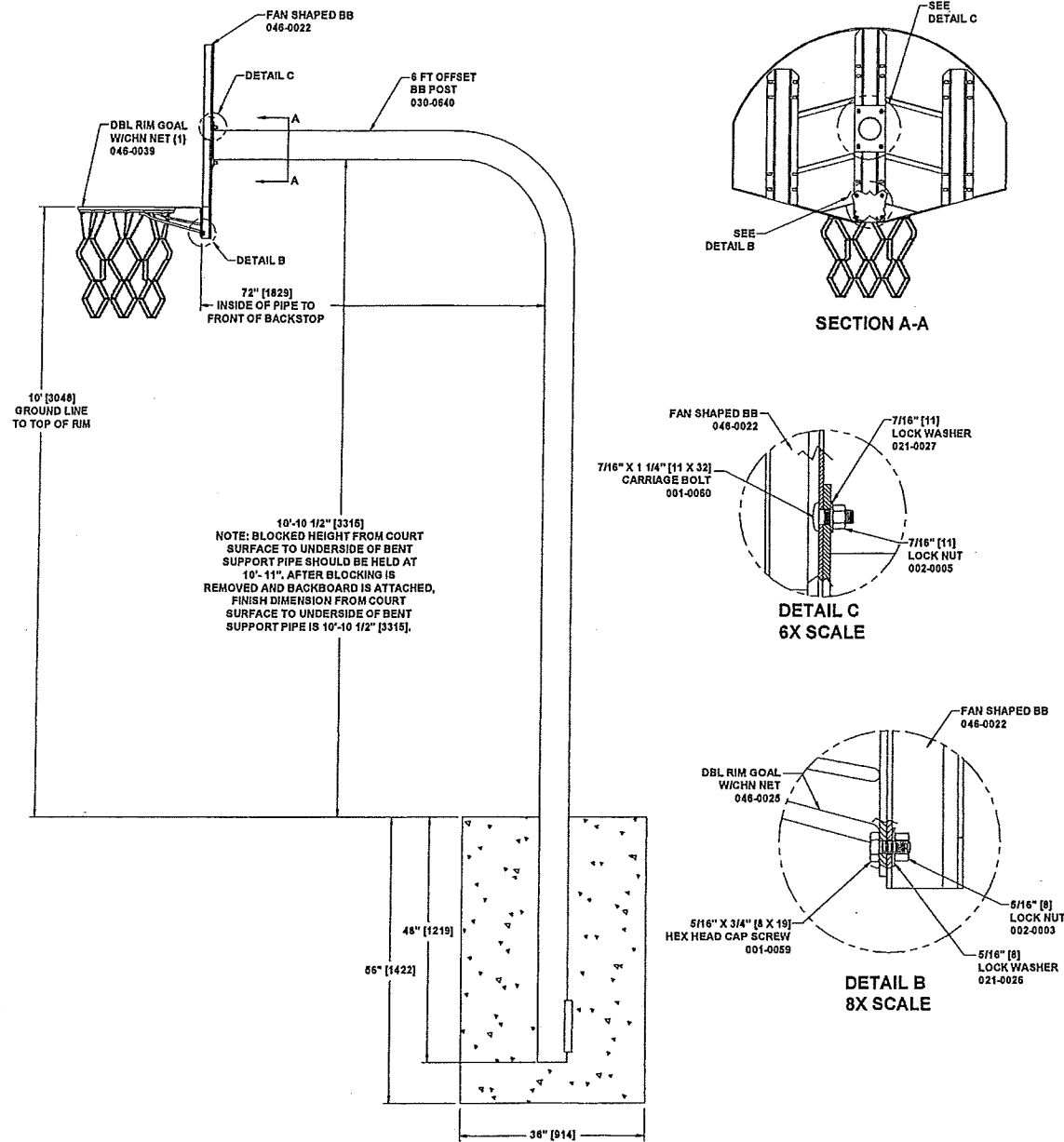
NOTES

- 1.) PLACE 4 OZ. PERMEABLE NON-WOVEN LANDSCAPE FABRIC OVER ENTIRE PLAYGROUND SUBGRADE PER DETAIL 2.2
- 2.) PLAYGROUND EQUIPMENT SHALL BE INSTALLED WITH APPROPRIATE ELEVATIONS RELATIVE TO PROPOSED FINISHED SURFACE ELEVATIONS FOR PLAYGROUND SURFACING AS DEFINED IN PLANS.





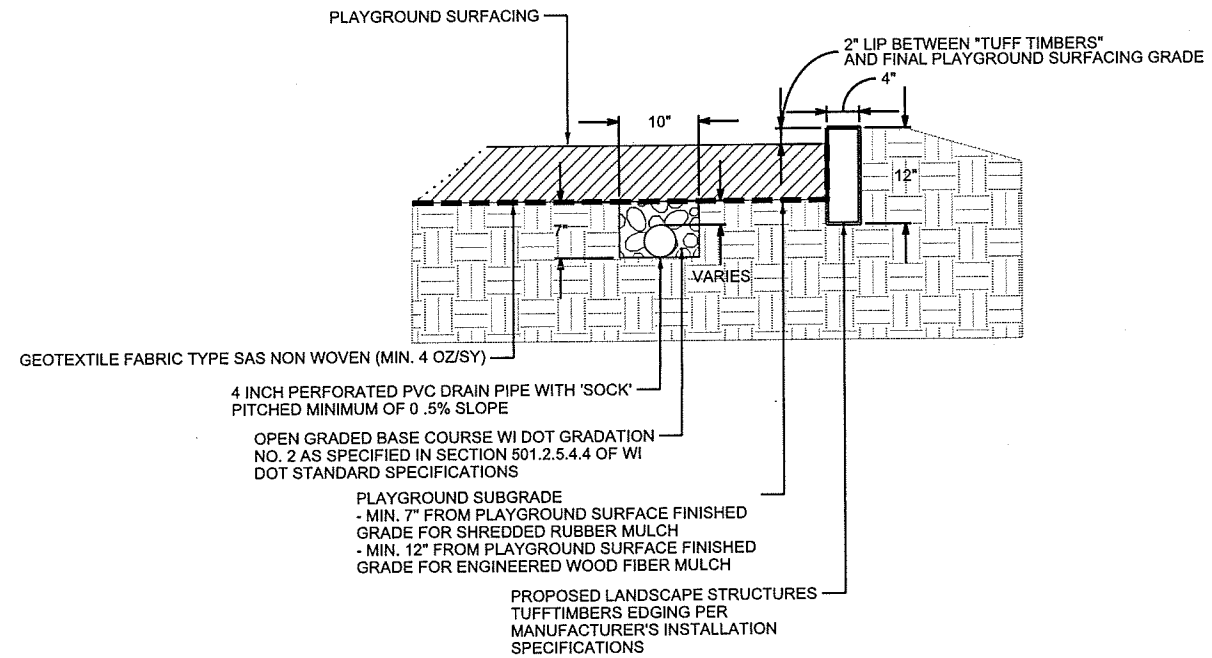
8/10/00



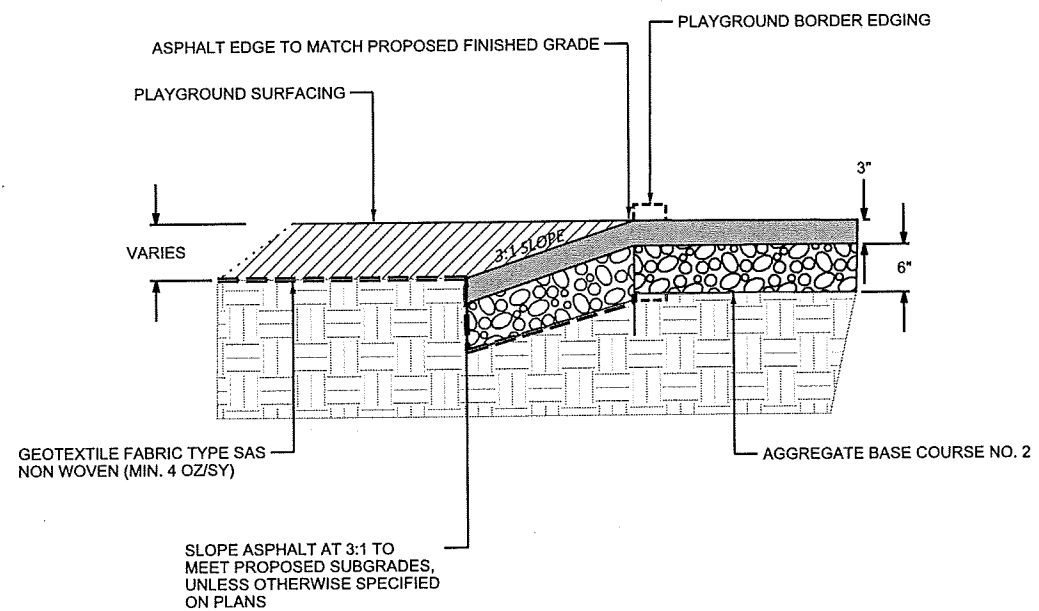
590-0057
FAN BB DBL RIM CHN 6' (1)

BCI Burke Company, LLC P.O. Box 549 Fond du Lac, Wisconsin 54936-0549 Telephone 1-800-356-2070

1 BASKETBALL HOOP AND POLE DETAIL
 N.T.S.



2 TYPICAL PLAYGROUND SURFACING WITH UNDERDRAIN
 N.T.S.



3 PAVEMENT EDGE AT PLAYGROUND
 N.T.S.

City of Madison
 Department of Public Works
 PARKS DIVISION

City-County Building, Suite 104
 210 Martin Luther King, Jr. Blvd.
 PO Box 2987
 Madison, WI 53701-2987

play
MADISON
PARKS

PROJECT:
 OWL CREEK
 PARK
 IMPROVEMENTS
 PHASE 2

Although every effort has been made in preparing these plans and checking them for accuracy, the contractor and subcontractors must check all details and dimensions of their trade and be responsible for the same.

ITEM DATE
 Drawn by: KNK 06-03-2015

PUBLIC WORKS PROJECT #:
 7526

SHEET TITLE:
 DETAILS

SHEET NUMBER:
1.4