

BASEMENT FLOOR PLAN

Project Title
**6901 Littlemore Drive
Apartments**

Revisions
GDP / SIP Submitted - July 16, 2008
UPC Initial Submitted - July 16, 2008

Drawing Title
**Building #1 - 24 Unit
Basement Plan**

Project No. **0817**
Drawing No. **1**

Consultant

Notes
Date

Revisions
GDP / SIP Submitted - July 16, 2008
UDC Initial Submitted - July 16, 2008

Project Title
**6901 Littlemore Drive
Apartments**

Drawing Title
**Building #5 - 42 Unit
Third Floor Plan**

Project No. **0817**

Drawing No. **23**



THIRD FLOOR PLAN
1/8" = 1'-0"
N

Consultant

Notes
Date

Revisions
GDP / SIP Submittal - July 16, 2008
UDC Initial Submittal - July 16, 2008

Project Title
**6901 Littlemore Drive
Apartments**

Drawing Title
**Building #5 - 42 Unit
Second Floor Plan**

Project No. **0817**
Drawing No. **22**



SECOND FLOOR PLAN
1/8" = 1'-0"
N

Consultant

Notes
Date

Revisions
GDP / SIP Submittal - July 16, 2008
UDC Initial Submittal - July 16, 2008

Project Title
**6901 Littlemore Drive
Apartments**

Drawing Title
**Building #5 - 42 Unit
First Floor Plan**

Project No. **0817**
Drawing No. **21**



FIRST FLOOR PLAN
1/8" = 1'-0"
N

Consultant

Notes
Date

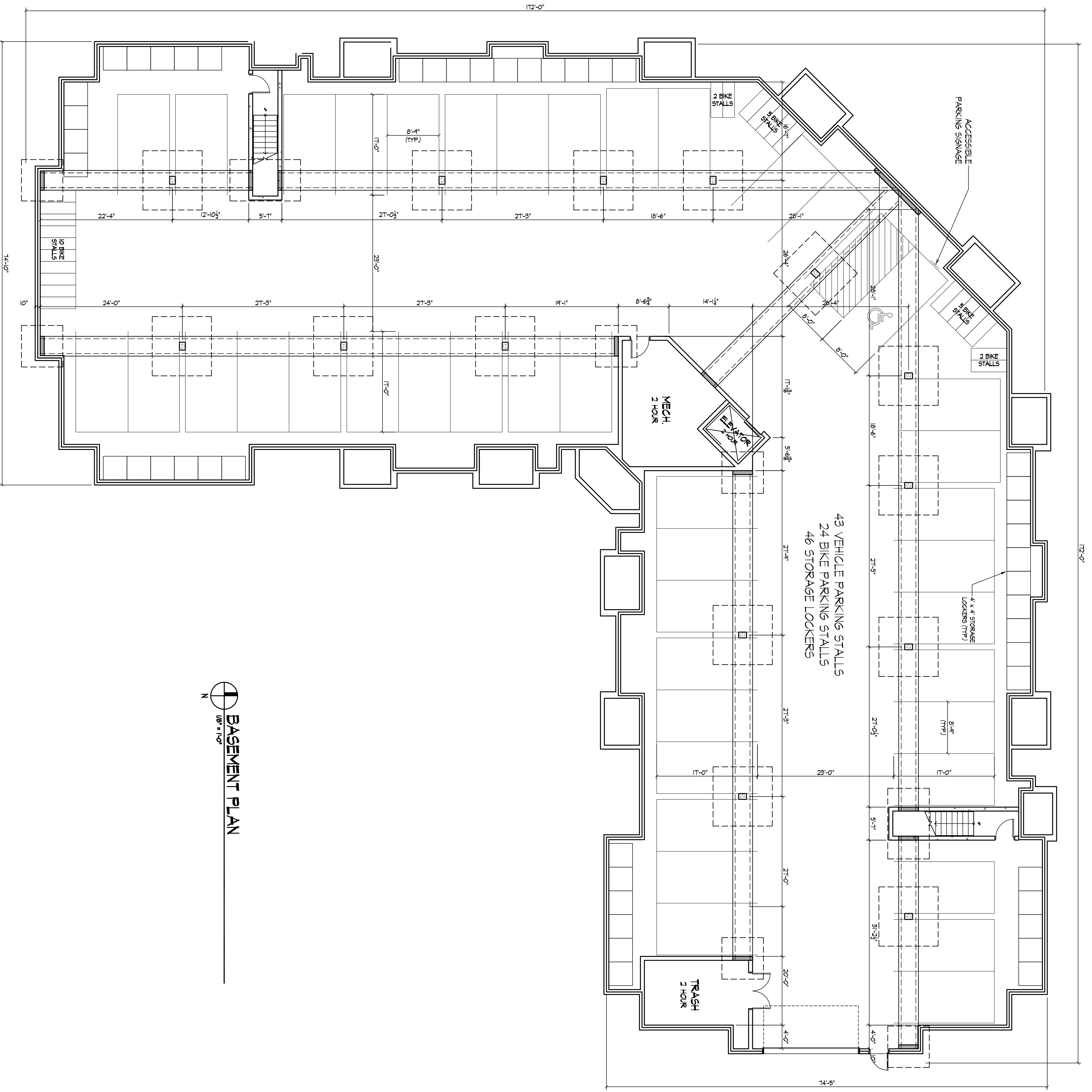
Revisions
GDP / SIP Submitted - July 16, 2008
UPC Initial Submitted - July 16, 2008

Project Title
**6901 Littlemore Drive
Apartments**

Drawing Title
**Building #5 - 42 Unit
Basement Floor Plan**

Project No. **0817**

Drawing No. **20**

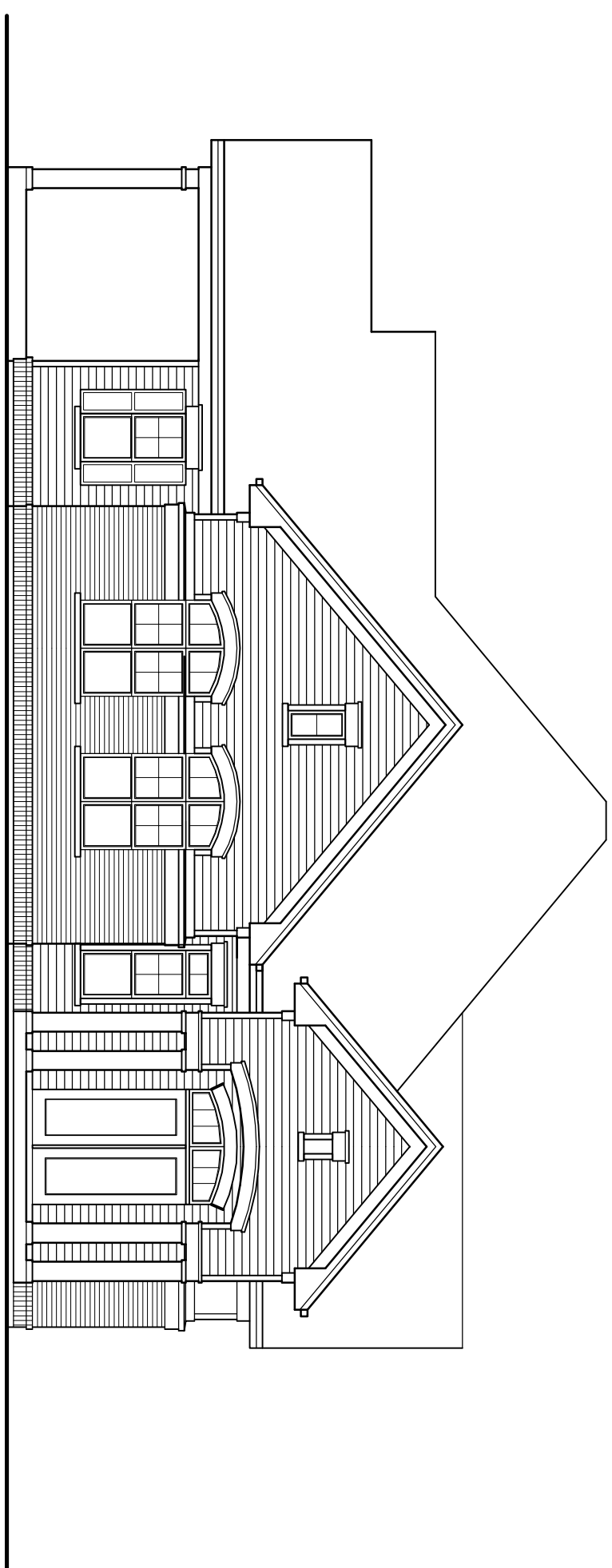


BASEMENT PLAN
1/8" = 1'-0"
N

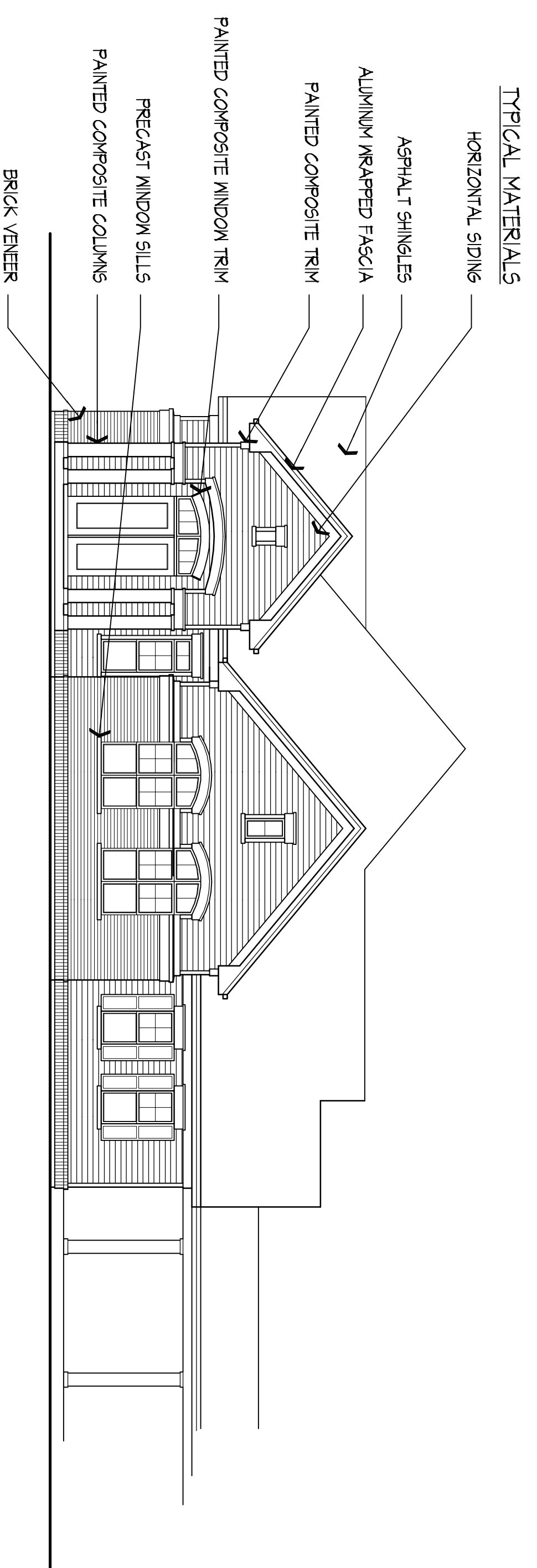
This document contains confidential or proprietary information of KNOTHE & BRUCE ARCHITECTS. It is intended for the use of the client and is not to be distributed, copied, or reproduced without the written consent of KNOTHE & BRUCE ARCHITECTS. If you have received this document in error, please notify the sender immediately. KNOTHE & BRUCE ARCHITECTS, 7601 UNIVERSITY AVENUE, SUITE 201, MIDDLETON, WISCONSIN 53562. TEL: 608-836-3690. FAX: 608-836-6934.

Consultant

Notes
Date



NORTH-EAST ELEVATION
1/8" = 1'-0"



NORTH-WEST ELEVATION
1/8" = 1'-0"

Revisions
GPP / SJP skentzki - July 16, 2008
JDC mhsl skentzki - July 16, 2008

Project Title
**6901 Littlemore Drive
Apartments**

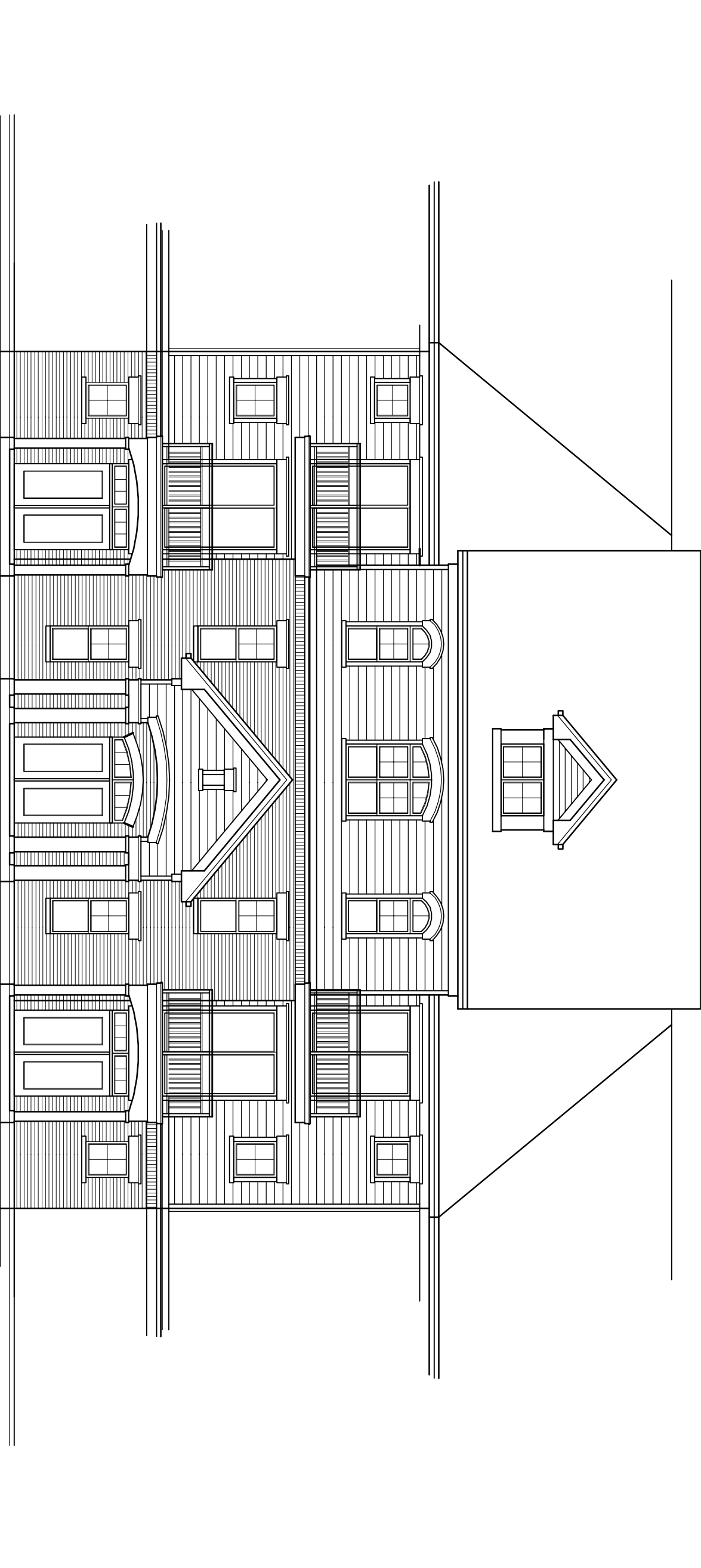
Drawing Title
Clubhouse Elevations

Project No. **0817**
Drawing No. **19**

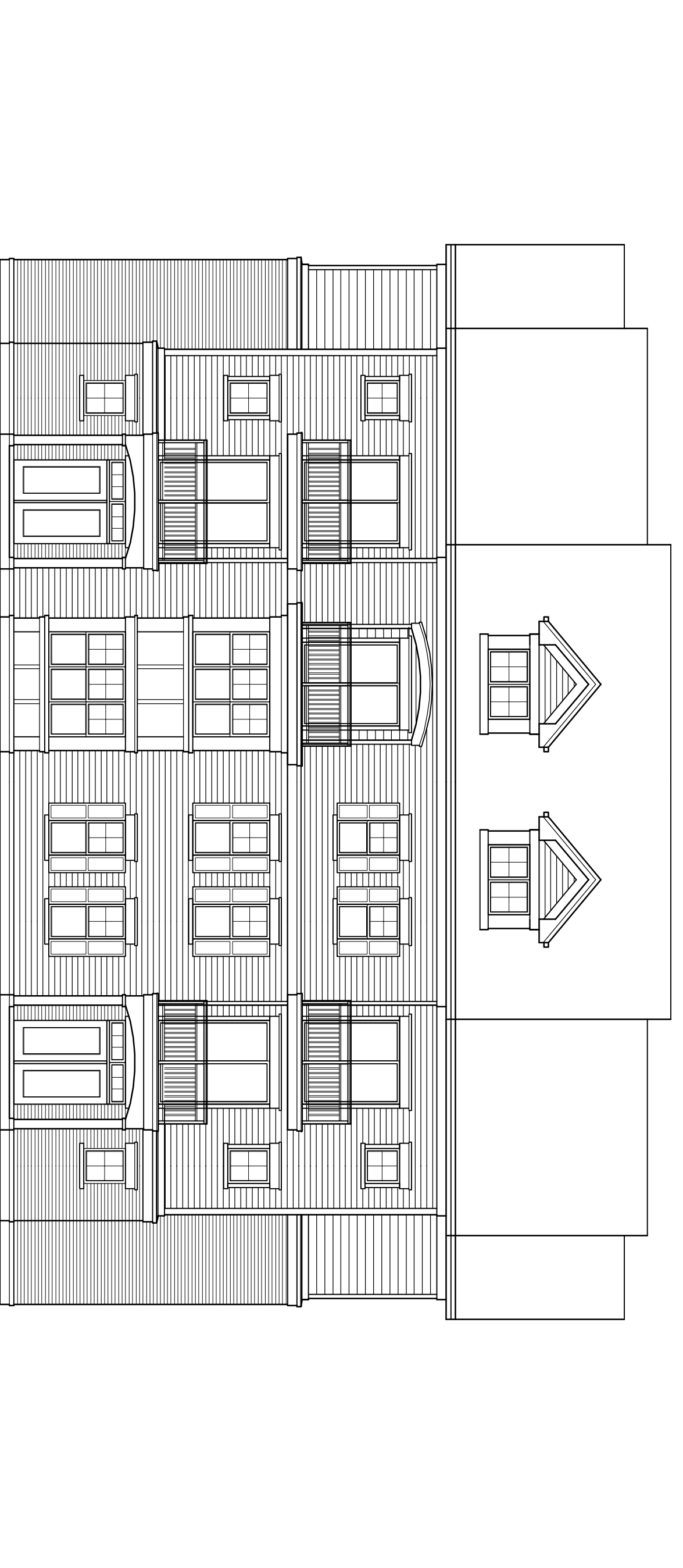
This document contains confidential or proprietary information of KNOTHE & BRUCE ARCHITECTS. It is intended for the use of the client and is not to be distributed, copied, or otherwise used without the written consent of KNOTHE & BRUCE ARCHITECTS. If you have received this document in error, please notify the sender immediately by email or phone.

Consultant

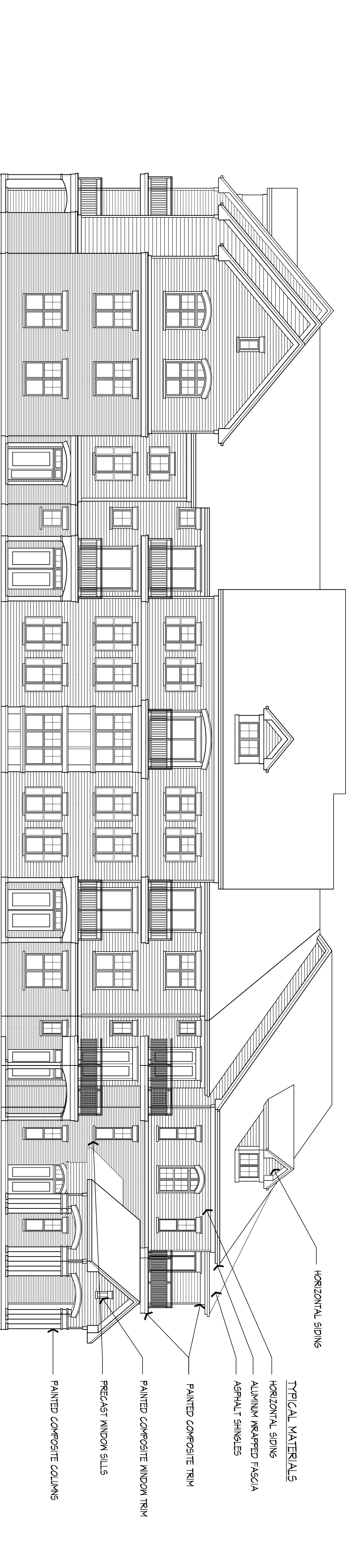
Notes
Date



TYPICAL ANGLE ELEVATION
1/8" = 1'-0"



TYPICAL END ELEVATION
1/8" = 1'-0"



TYPICAL SOUTH ELEVATION
1/8" = 1'-0"

- HORIZONTAL SIDING
- TYPICAL MATERIALS
- HORIZONTAL SIDING
- ALUMINUM WRAPPED FASCIA
- ASPHALT SHINGLES
- PAINTED COMPOSITE TRIM
- PAINTED COMPOSITE WINDOW TRIM
- PRECAST WINDOW SILLIS
- PAINTED COMPOSITE COLUMNS

Revisions
GPP / S/P Schmidt - July 16, 2009
JDC Initial Schmidt - July 16, 2009

Project Title
**6901 Littlemore Drive
Apartments**

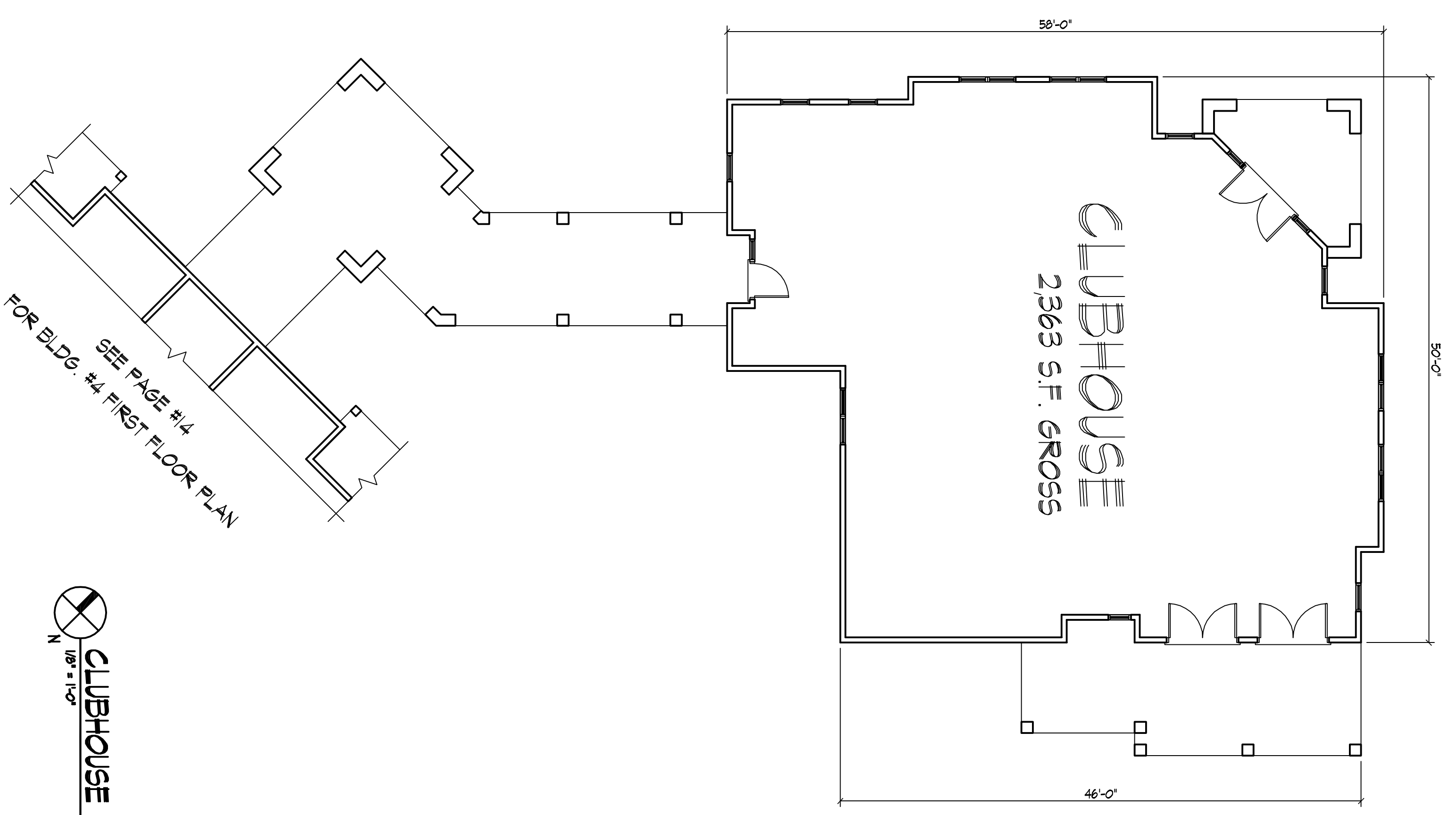
Drawing Title
**Building #4 - 42 Unit
Elevations**

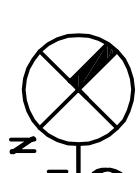
Project No. **0817**
Drawing No. **18**

This document contains confidential or proprietary information of KNOTHE & BRUCE ARCHITECTS. It is intended for the use of the client and is not to be distributed, copied, or otherwise used without the written consent of KNOTHE & BRUCE ARCHITECTS. If you are not an intended recipient, please notify the sender immediately by e-mail or phone. The sender will not be responsible for any actions taken by you or any third party as a result of this communication.

Consultant

Notes
Date



 **CLUBHOUSE FLOOR PLAN**

Revisions
GDP / SIP Submitted - July 16, 2008
UDC Initial Submitted - July 16, 2008

Project Title
**6901 Littlemore Drive
Apartments**

Drawing Title
Clubhouse Floor Plan

Project No. **0817** Drawing No. **17**

This document contains confidential or proprietary information of Knoch & Bruce Architects. It is to be used only for the project and site specifically indicated by Knoch & Bruce Architects. Other than the architect's name and address, no part of this document is to be reproduced or transmitted in any form or by any means, electronic or mechanical, including photocopying, recording, or by any information storage and retrieval system, without the prior written permission of Knoch & Bruce Architects.

Consultant

Notes
Date

Revisions
GDP / SIP Submittal - July 16, 2008
UDC Initial Submittal - July 16, 2008

Project Title
**6901 Littlemore Drive
Apartments**

Drawing Title
**Building #4 - 42 Unit
Basement Plan**

Project No. **0817**
Drawing No. **16**



THIRD FLOOR PLAN

This document contains confidential or proprietary information of KNOTHE & BRUCE ARCHITECTS. It is intended for the use of the client and is not to be distributed, copied, or reproduced without the written consent of KNOTHE & BRUCE ARCHITECTS. If you have received this document in error, please notify the sender immediately.

Consultant

Notes
Date

Revisions
GDP / SIP Submitted - July 16, 2008
UDC Initial Submitted - July 16, 2008

Project Title
**6901 Littlemore Drive
Apartments**

Drawing Title
**Building #4 - 42 Unit
Second Floor Plan**

Project No. **0817**
Drawing No. **15**



SECOND FLOOR PLAN
1/8" = 1'-0"

This document contains confidential or proprietary information of Knoch & Bruce Architects. It is intended for the use of the client and is not to be distributed, copied, or otherwise used without the written consent of Knoch & Bruce Architects. If you are not an intended recipient, please notify the sender immediately by email or phone.

Consultant

Notes
Date

Revisions
GDP / SIP Submitted - July 16, 2008
UDC Initial Submitted - July 16, 2008

Project Title
**6901 Littlemore Drive
Apartments**

Drawing Title
**Building #4 -42 Unit
First Floor Plan**

Project No. **0817** Drawing No. **14**



FIRST FLOOR PLAN
1/8" = 1'-0"

This document contains confidential or proprietary information of KNOTHE & BRUCE ARCHITECTS. It is intended for the use of the client and is not to be distributed, copied, or reproduced without the written consent of KNOTHE & BRUCE ARCHITECTS. If you are not an intended recipient, you should not disseminate, distribute, or take any action in reliance on the information contained herein. If you have received this document in error, please notify the sender immediately by e-mail or telephone.

Consultant

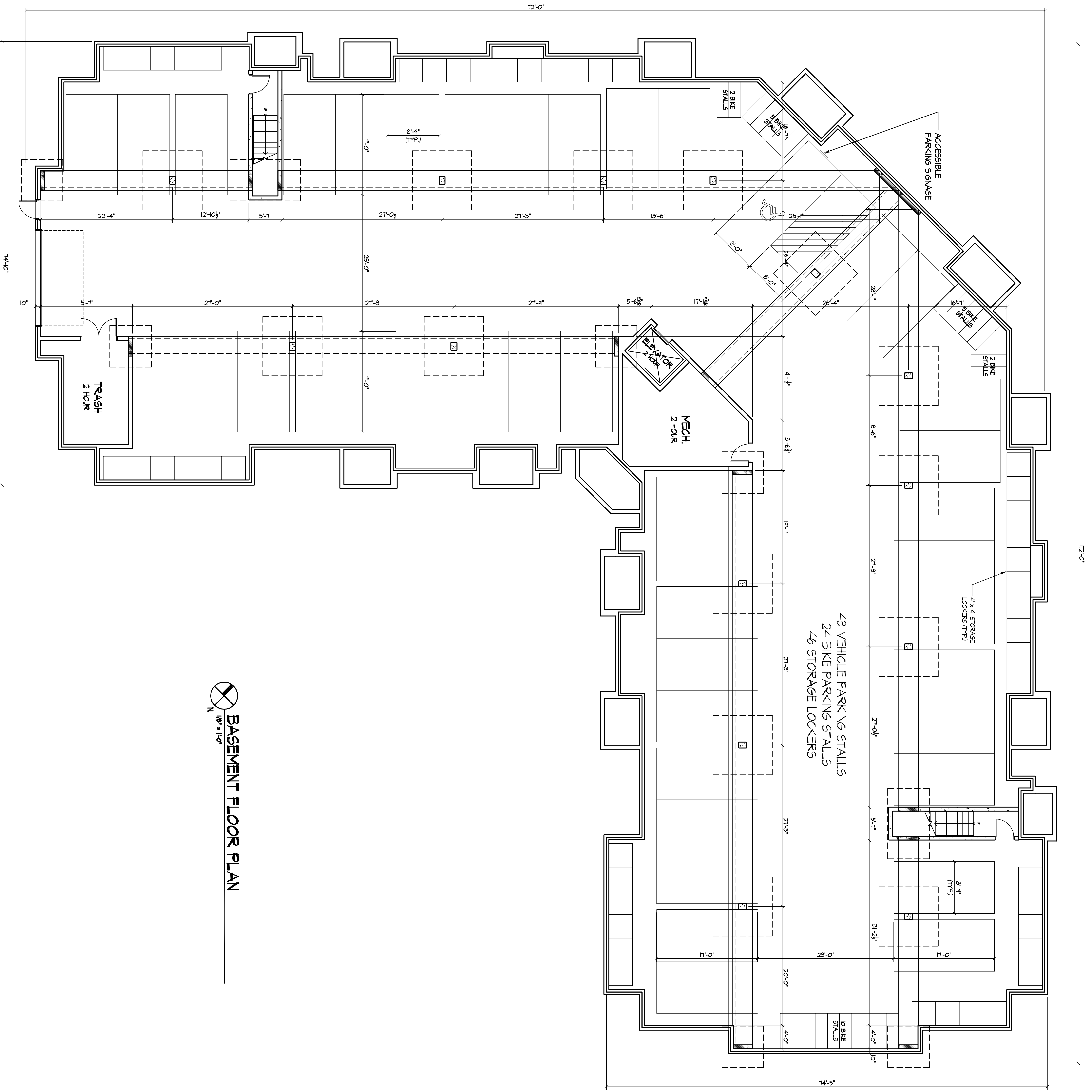
Notes
Date

Revisions
GDP / SIP Submitted - July 16, 2008
UPC Initial Submitted - July 16, 2008

Project Title
**6901 Littlemore Drive
Apartments**

Drawing Title
**Building #4 - 42 Unit
Basement Plan**

Project No. **0817** Drawing No. **13**

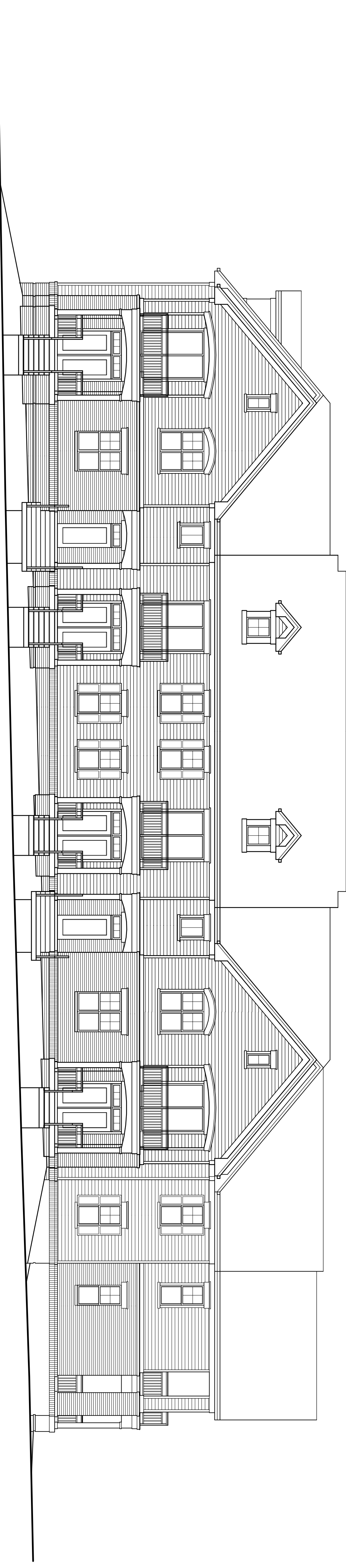


BASEMENT FLOOR PLAN

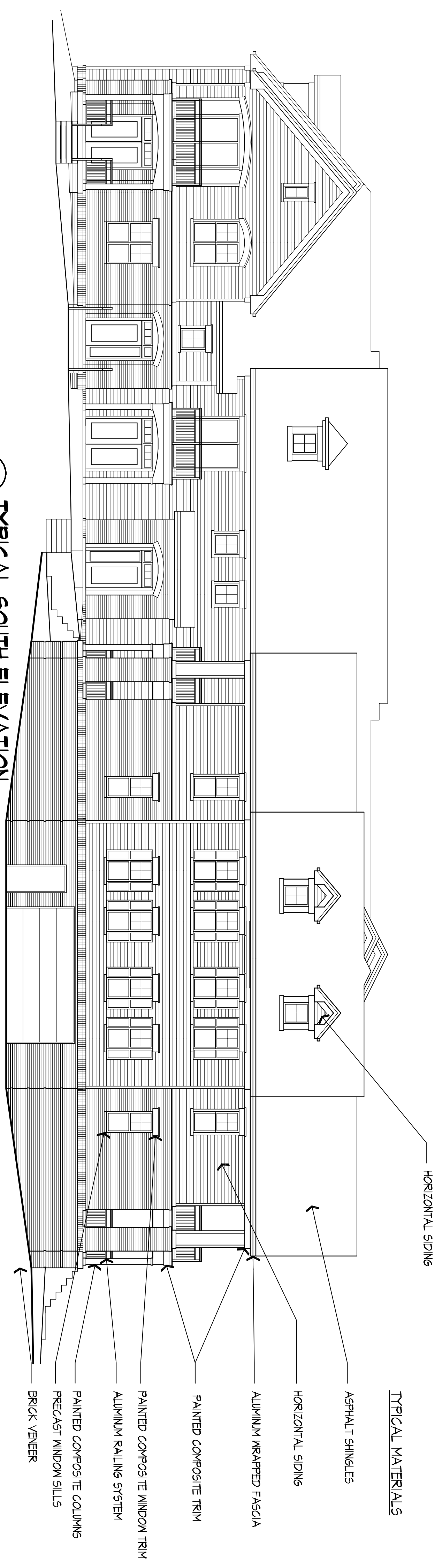
This document contains confidential or proprietary information of KNOTHE & BRUCE ARCHITECTS. It is intended for the use of the client and is not to be distributed, copied, or reproduced without the written consent of KNOTHE & BRUCE ARCHITECTS. If you have received this document in error, please notify the sender immediately by email or phone.

Consultant

Notes
Date



○ TYPICAL NORTH ELEVATION
1/8" = 1'-0"



○ TYPICAL SOUTH ELEVATION
1/8" = 1'-0"

Revisions

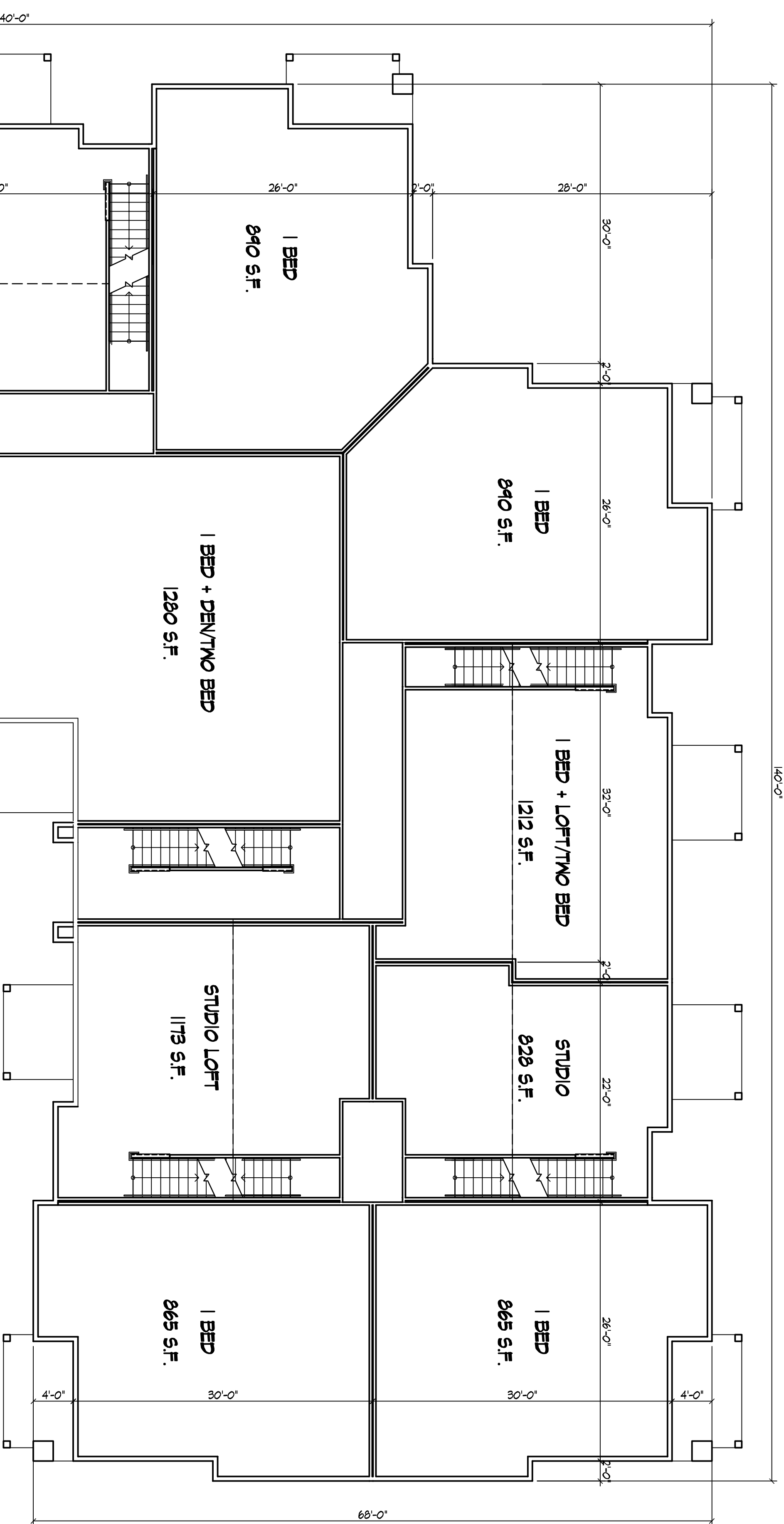
- 6/27 / S/P Identical - July 6, 2009
- UDC Initial Identical - July 6, 2009

Project Title
**6901 Littlemore Drive
Apartments**

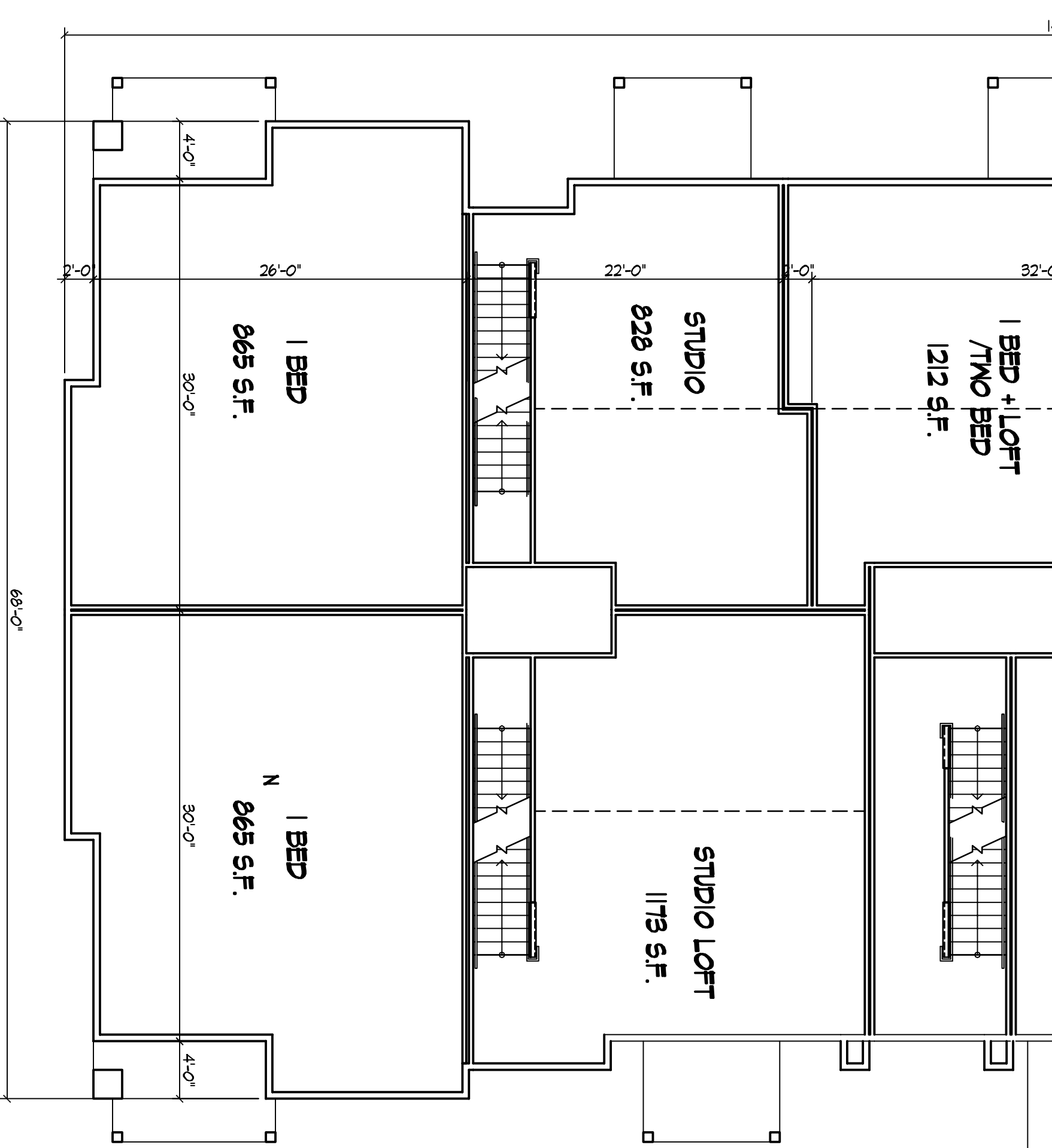
Drawing Title
**Building #3 - 26 Unit
Elevations**

Project No. **0817** Drawing No. **12**

This document contains confidential or proprietary information of KNOTHE & BRUCE ARCHITECTS. It is intended for the use of the client and is not to be distributed, copied, or reproduced in any form without the written consent of KNOTHE & BRUCE ARCHITECTS. If you have received this document in error, please notify the sender immediately by email or phone.



SECOND FLOOR PLAN
1/8" = 1'-0"



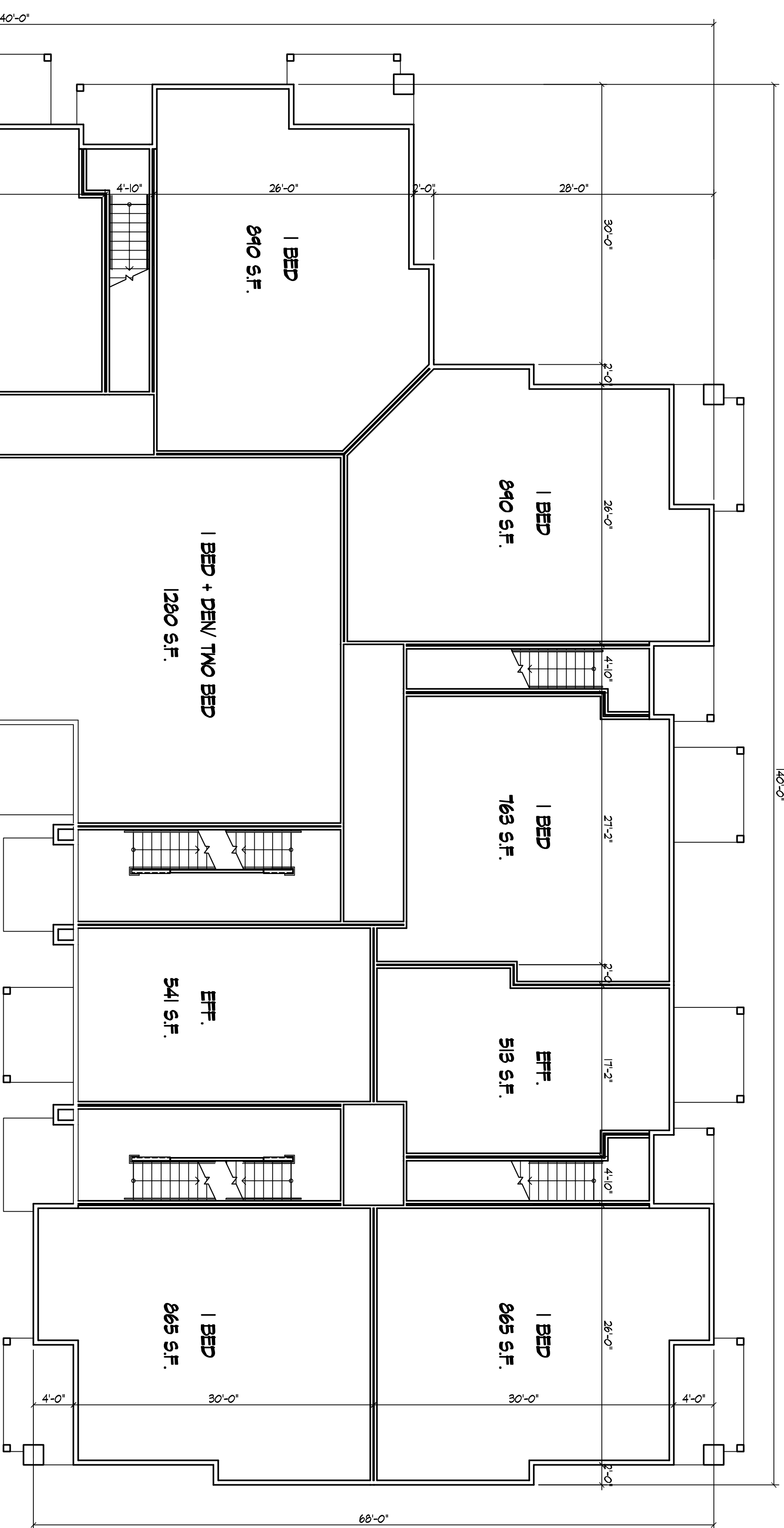
Revisions
GDP / SIP Submitted - July 16, 2008
UPC Initial Submitted - July 16, 2008

Project Title
**6901 Littlemore Drive
Apartments**

Drawing Title
**Building #3 - 26 Unit
Second Floor Plan**

Project No. **0817**
Drawing No. **11**

This document contains confidential and proprietary information of KNOTHE & BRUCE ARCHITECTS. It is intended for the use of the client and is not to be distributed, copied, or reproduced in any form without the written consent of KNOTHE & BRUCE ARCHITECTS. If you are not an intended recipient, please notify the sender immediately by email or phone.



FIRST FLOOR PLAN
1/8" = 1'-0"
N

Revisions
GDP / SIP Submitted - July 16, 2008
UPC Initial Submitted - July 16, 2008

Project Title
**6901 Littlemore Drive
Apartments**

Drawing Title
**Building #3 -26 Unit
First Floor Plan**

Project No. **0817**
Drawing No. **10**

This document contains confidential and proprietary information of KNOTHE & BRUCE ARCHITECTS. It is intended for the use of the client and is not to be distributed, copied, or otherwise used without the written consent of KNOTHE & BRUCE ARCHITECTS. The client agrees to hold KNOTHE & BRUCE ARCHITECTS harmless from any and all claims, damages, and expenses, including reasonable attorneys' fees, that may be incurred by KNOTHE & BRUCE ARCHITECTS as a result of the client's use of this document.

Consultant

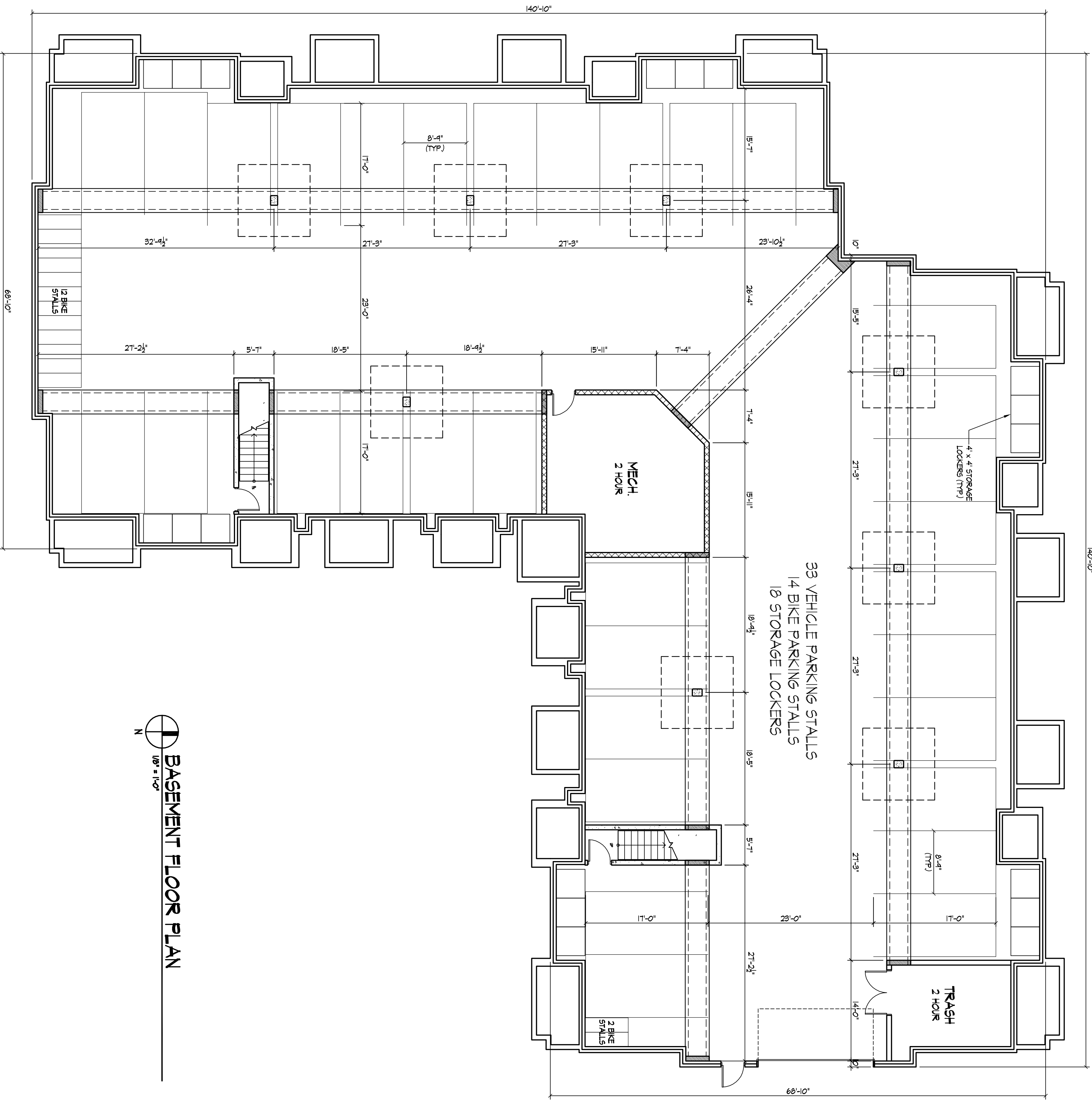
Notes
Date

Revisions
GDP / SIP Submitted - July 16, 2008
UDC Initial Submitted - July 16, 2008

Project Title
**6901 Littlemore Drive
Apartments**

Drawing Title
**Building #3 - 26 Unit
Basement Plan**

Project No. **0817** Drawing No. **9**



BASEMENT FLOOR PLAN
1/8" = 1'-0"
N

This document contains confidential or proprietary information of KNOTHE & BRUCE ARCHITECTS. It is intended for the use of the client and is not to be distributed, copied, or reproduced without the written consent of KNOTHE & BRUCE ARCHITECTS. If you have received this document in error, please notify the sender immediately by email or phone.

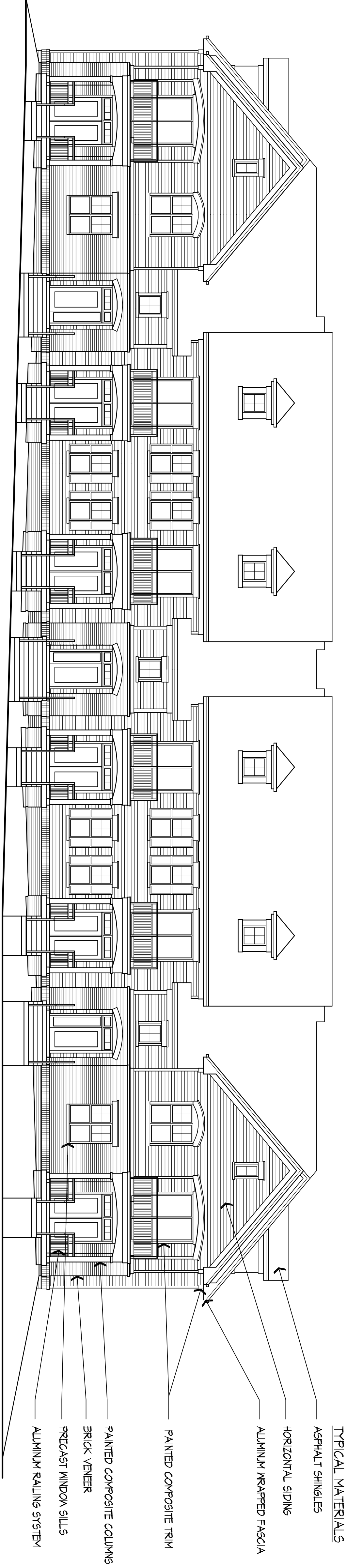
Consultant

Notes
Date



○ TYPICAL NORTH ELEVATION
1/8" = 1'-0"

Revisions
6/27 / S/P Schematic - July 6, 2009
JDC Initial Schematic - July 6, 2009



- TYPICAL MATERIALS
- ASPHALT SHINGLES
 - HORIZONTAL SIDING
 - ALUMINUM WRAPPED FASCIA
 - PAINTED COMPOSITE TRIM
 - PAINTED COMPOSITE COLUMNS
 - BRICK VENEER
 - PRECAST WINDOW SILL
 - ALUMINUM RAILING SYSTEM

○ TYPICAL SOUTH ELEVATION
1/8" = 1'-0"

Project Title
**6901 Littlemore Drive
Apartments**

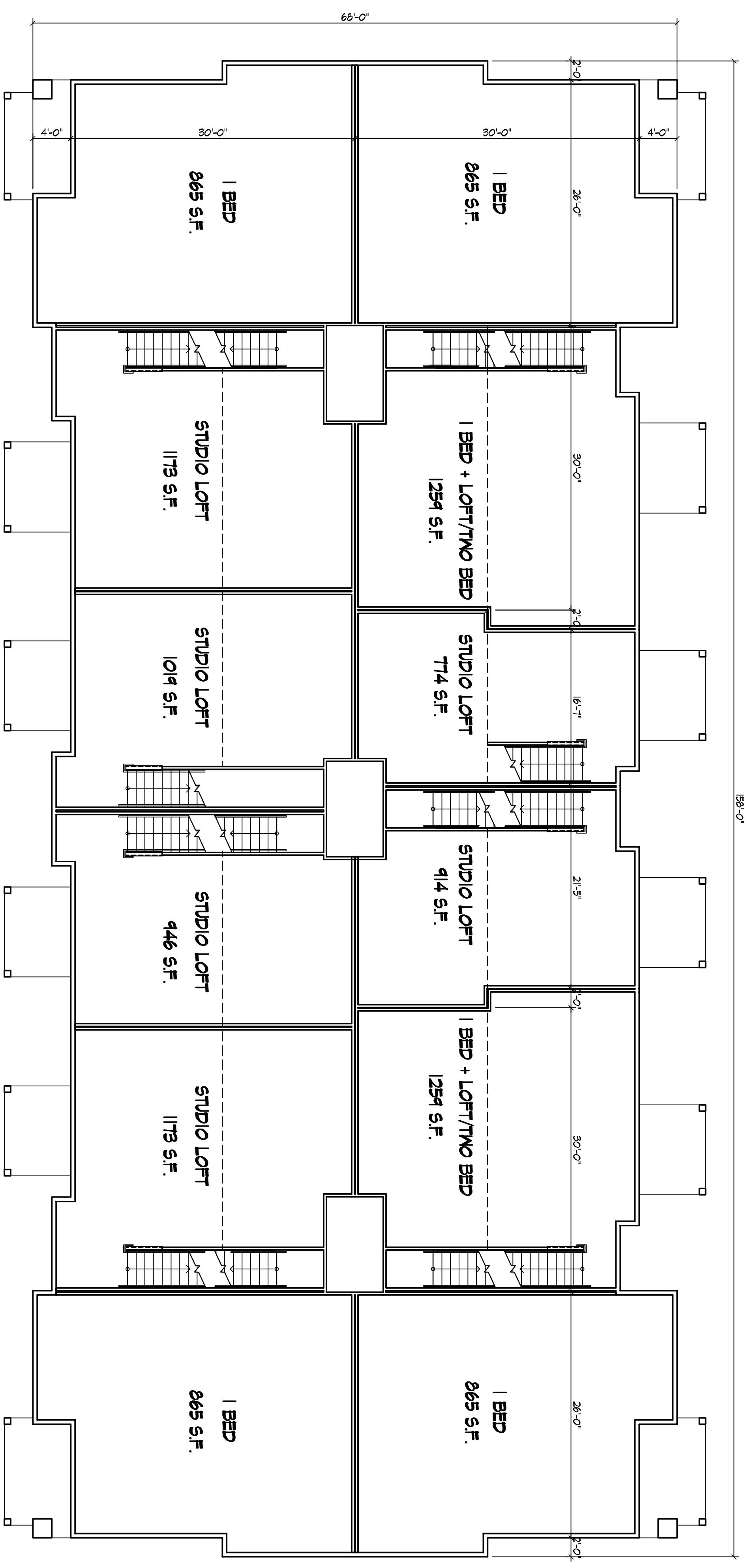
Drawing Title
**Building #2 - 24 Unit
Elevations**

Project No. **0817**
Drawing No. **9**

This document contains confidential or proprietary information of KNOTHE & BRUCE ARCHITECTS. It is intended for the use of the client and is not to be distributed, copied, or otherwise used without the written consent of KNOTHE & BRUCE ARCHITECTS. If you have received this document in error, please notify the sender immediately by email or phone. Thank you for your attention to this matter.

Consultant

Notes
Date



SECOND FLOOR PLAN
1/8" = 1'-0"
N

Revisions
GDP / SIP Submitted - July 16, 2008
UDC Initial Submitted - July 16, 2008

Project Title
**6901 Littlemore Drive
Apartments**

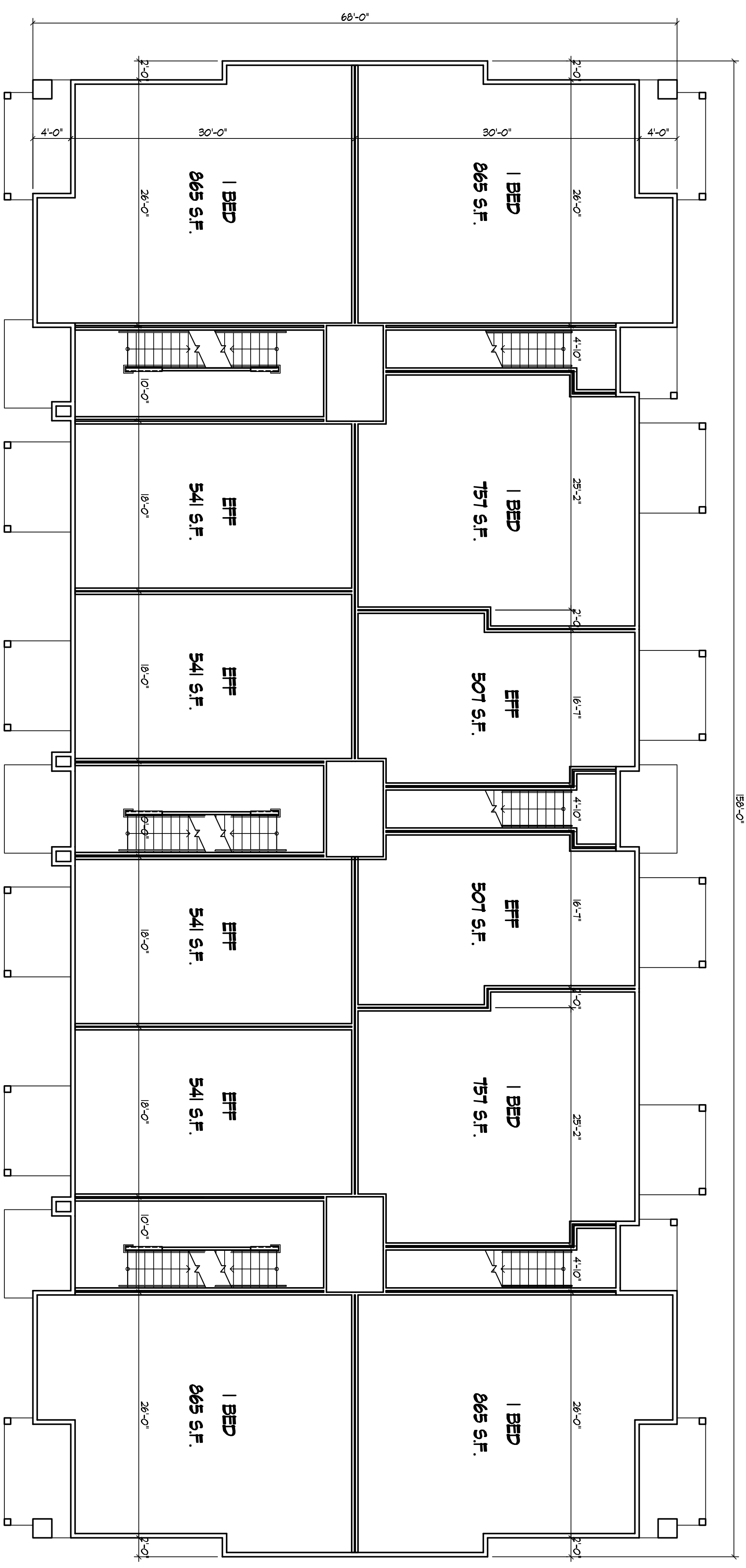
Drawing Title
**Building #2 - 24 Unit
Second Floor Plan**

Project No. **0817**
Drawing No. **7**

This document contains confidential or proprietary information of Knoch & Bruce Architects. It is intended for the use of the client only. It is not to be distributed, copied, or otherwise used without the written consent of Knoch & Bruce Architects. If you are not an intended recipient, please notify Knoch & Bruce Architects immediately.

Consultant

Notes
Date



FIRST FLOOR PLAN
1/8" = 1'-0"
N

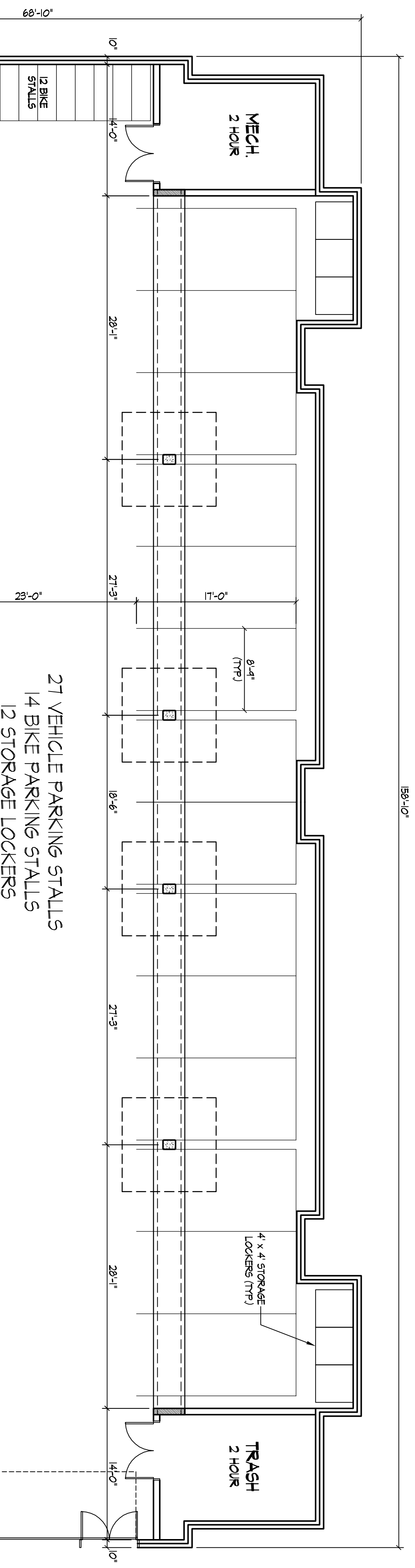
Revisions
GDP / SIP Submitted - July 16, 2008
UDC Initial Submitted - July 16, 2008

Project Title
**6901 Littlemore Drive
Apartments**

Drawing Title
**Building #2 - 24 Unit
First Floor Plan**

Project No. **0817**
Drawing No. **6**

This document contains confidential or proprietary information of Knoch & Bruce Architects. It is intended for the use of the client and is not to be distributed, copied, or otherwise used without the written consent of Knoch & Bruce Architects. If you have received this document in error, please notify Knoch & Bruce Architects immediately.



BASEMENT FLOOR PLAN
1/8" = 1'-0"
N

Revisions
GDP / SIP Submitted - July 16, 2008
UPC Initial Submitted - July 16, 2008

Project Title
**6901 Littlemore Drive
Apartments**

Drawing Title
**Building #2 - 24 Unit
Basement Plan**

Project No. **0817**
Drawing No. **5**

This document contains confidential or proprietary information of Knoch & Bruce Architects. It is intended for the use of the client and is not to be distributed, copied, or otherwise used without the written consent of Knoch & Bruce Architects. If you are not an intended recipient, please notify the sender immediately by email or phone.

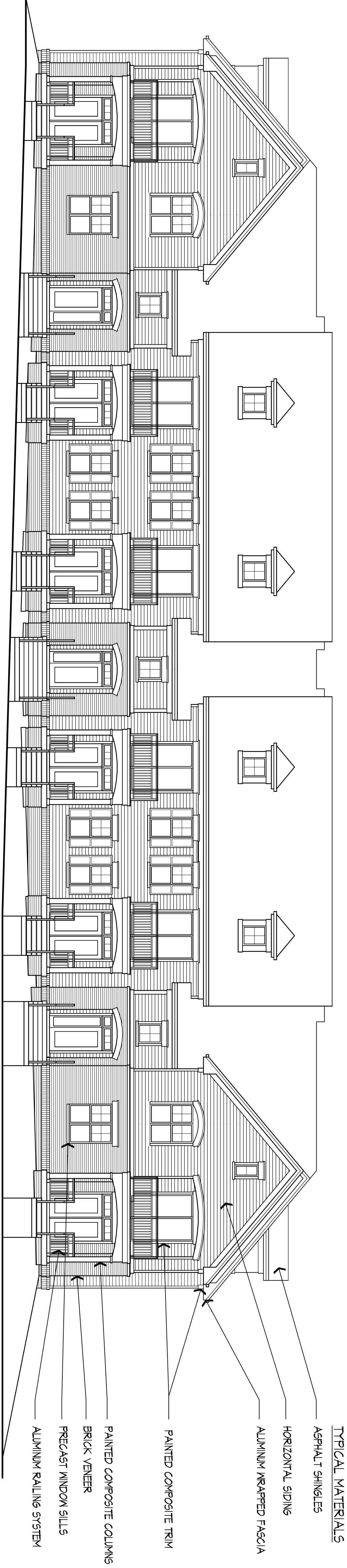
Consultant

Notes
Date



○ TYPICAL NORTH ELEVATION
1/8" = 1'-0"

Revisions
6PP / S/P Schematic - July 16, 2009
UDC Initial Schematic - July 16, 2009



- TYPICAL MATERIALS
- ASPHALT SHINGLES
 - HORIZONTAL SIDING
 - ALUMINUM WRAPPED FASCIA
 - PAINTED COMPOSITE TRIM
 - PAINTED COMPOSITE COLUMNS
 - BRICK VENEER
 - PRECAST WINDOW SILL
 - ALUMINUM RAILING SYSTEM

○ TYPICAL SOUTH ELEVATION
1/8" = 1'-0"

Project Title
**6901 Littlemore Drive
Apartments**

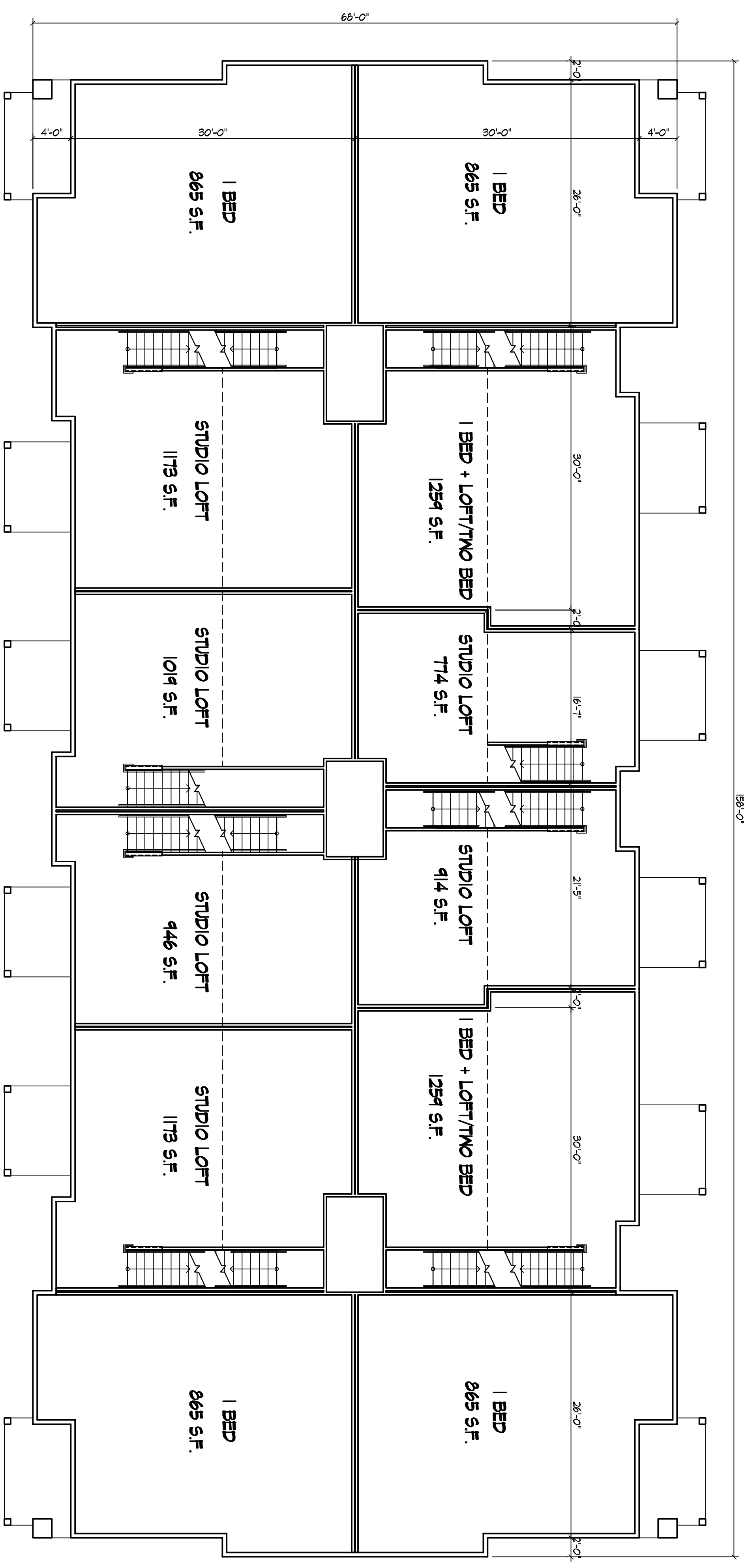
Drawing Title
**Building #1 - 24 Unit
Elevations**

Project No. **0817**
Drawing No. **4**

This document contains confidential or proprietary information of KNOTHE & BRUCE ARCHITECTS. It is intended for the use of the client and is not to be distributed, copied, or otherwise used without the written consent of KNOTHE & BRUCE ARCHITECTS. If you have received this document in error, please notify the sender immediately by email or phone.

Consultant

Notes
Date



SECOND FLOOR PLAN
1/8" = 1'-0"
N

Revisions
GDP / SIP Submitted - July 16, 2008
UDC Initial Submitted - July 16, 2008

Project Title
**6901 Littlemore Drive
Apartments**

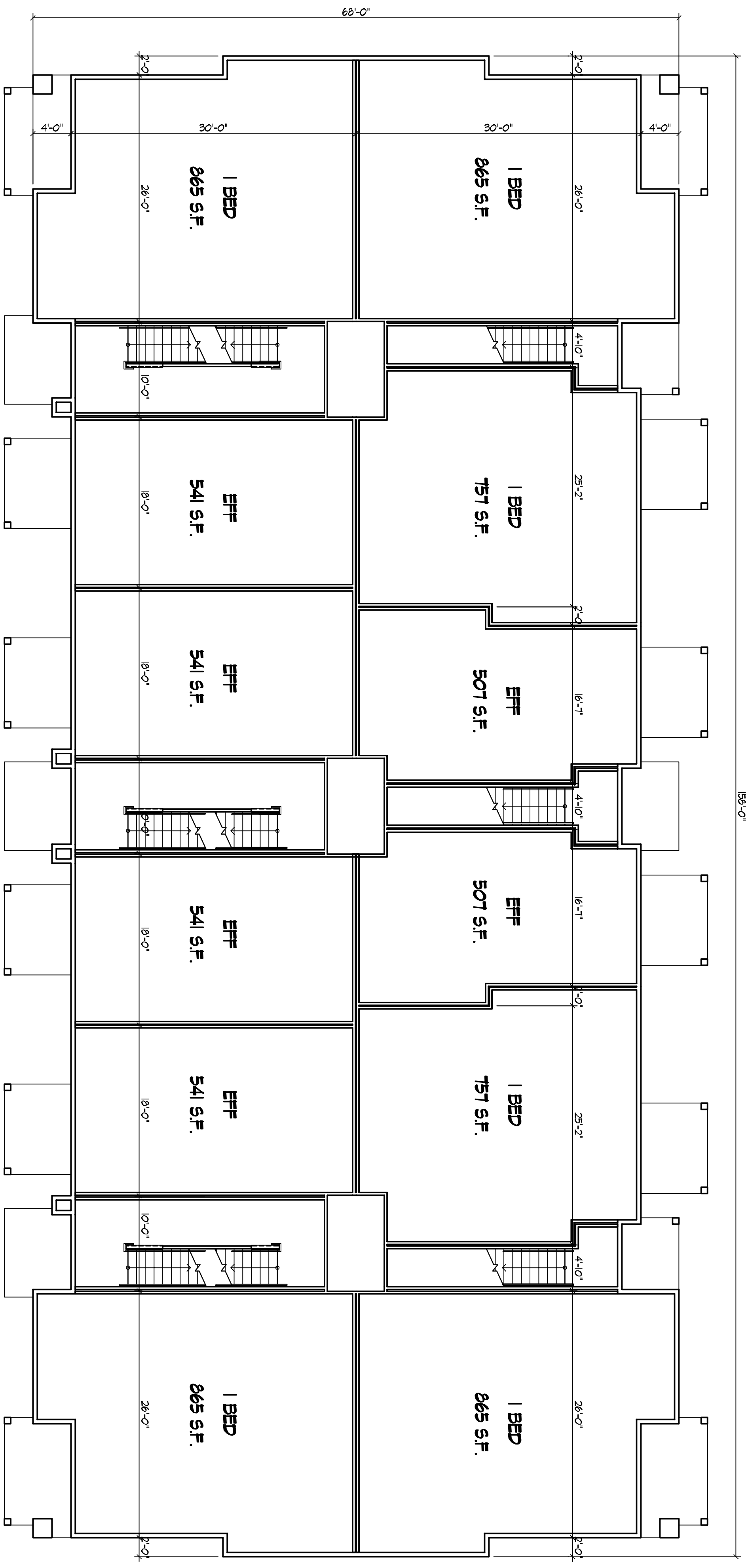
Drawing Title
**Building #1 - 24 Unit
Second Floor Plan**

Project No. **0817**
Drawing No. **3**

This document contains confidential or proprietary information of Knoch & Bruce Architects. It is intended for the use of the client only. It is not to be distributed, copied, or otherwise used without the written consent of Knoch & Bruce Architects. © 2008 Knoch & Bruce Architects. All rights reserved.

Consultant

Notes
Date



FIRST FLOOR PLAN
1/8" = 1'-0"
N

Revisions
GDP / SIP Submitted - July 16, 2008
UDC Initial Submitted - July 16, 2008

Project Title
**6901 Littlemore Drive
Apartments**

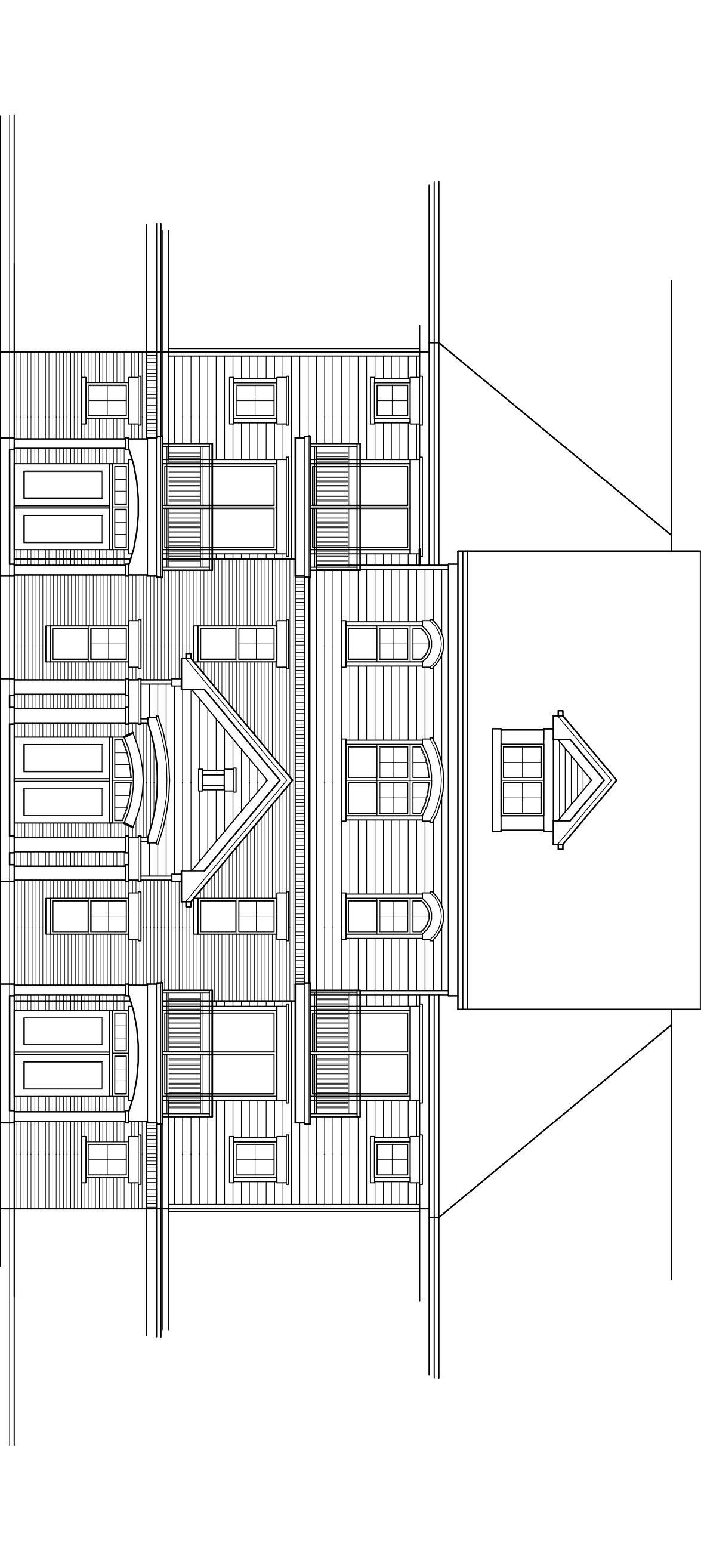
Drawing Title
**Building #1 - 24 Unit
First Floor Plan**

Project No. **0817**
Drawing No. **2**

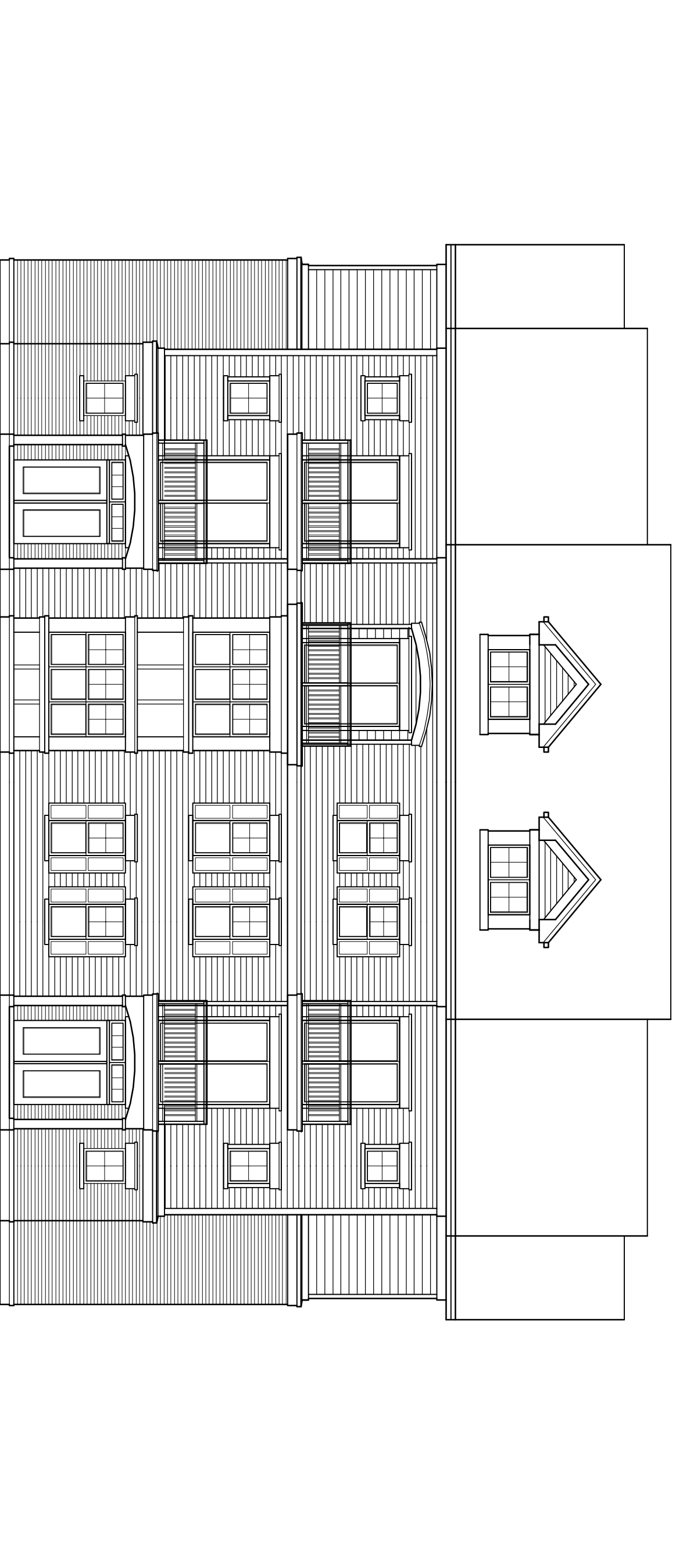
This document contains confidential or proprietary information of Knoch & Bruce Architects. It is intended for the use of the client only. It is not to be distributed, copied, or otherwise used without the written consent of Knoch & Bruce Architects. If you are not an intended recipient, please notify the sender immediately by e-mail or phone.

Consultant

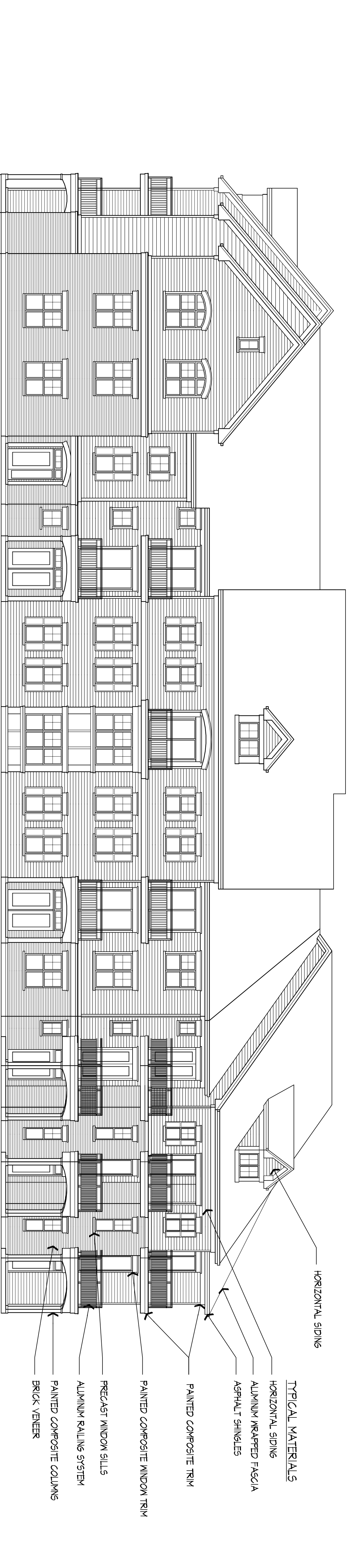
Notes
Date



TYPICAL ANGLE ELEVATION
1/8" = 1'-0"



TYPICAL END ELEVATION
1/8" = 1'-0"



TYPICAL SOUTH ELEVATION
1/8" = 1'-0"

Revisions
GPP / S/P Identical - July 16, 2009
UDC Initial Identical - July 16, 2009

Project Title
**6901 Littlemore Drive
Apartments**

Drawing Title
**Building #5 - 42 Unit
Elevations**

Project No. **0817**
Drawing No. **24**

This document contains confidential or proprietary information of Knoch & Bruce Architects. It is intended for the use of the client only. It is not to be distributed, copied, or otherwise used without the written consent of Knoch & Bruce Architects. If you are not an intended recipient, please notify the sender immediately by e-mail or phone.