

**Body File No. 63436**

DRAFTER'S ANALYSIS: This ordinance amends maps of the Wellhead Protection Zone which restricts certain uses that may introduce contaminants into the City's drinking water system.

\*\*\*\*\*

The Common Council of the City of Madison do hereby ordain as follows:

1. Subdivision (b) of Subsection (2) entitled "Protection Zones" of Section 28.102 entitled "Wellhead Protection Districts" of the Madison General Ordinances is amended to read as follows:

"(b) Zone B is the ~~smaller of the following~~:

~~1. The area around the well in which it has been determined that groundwater and potential contaminants will take one hundred (100) years or less to reach the pumping well, or~~

~~2. The area within a twelve hundred (1,200) foot radius around the well, except for the area in Zone A."~~

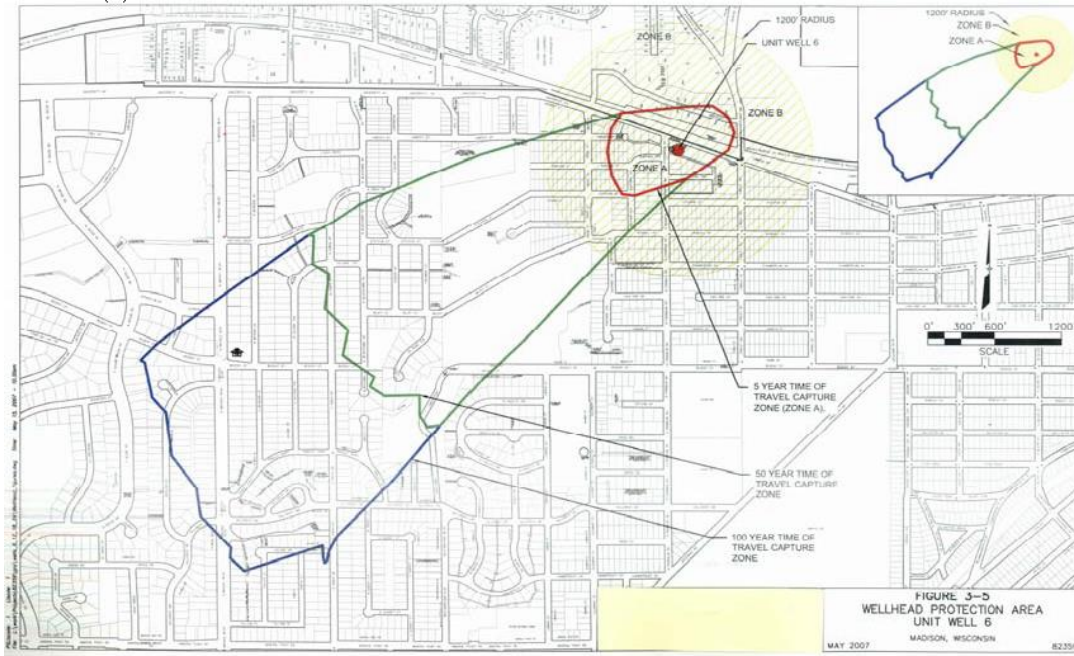
2. Subdivision (a) entitled "Map of Wellhead Protection District No. 6" of Subsection (5) entitled "Wellhead Protection District No. 6" of Section 28.102 entitled "Wellhead Protection Districts" of the Madison General Ordinances is amended to read as follows:

"(5) Wellhead Protection District No. 6.

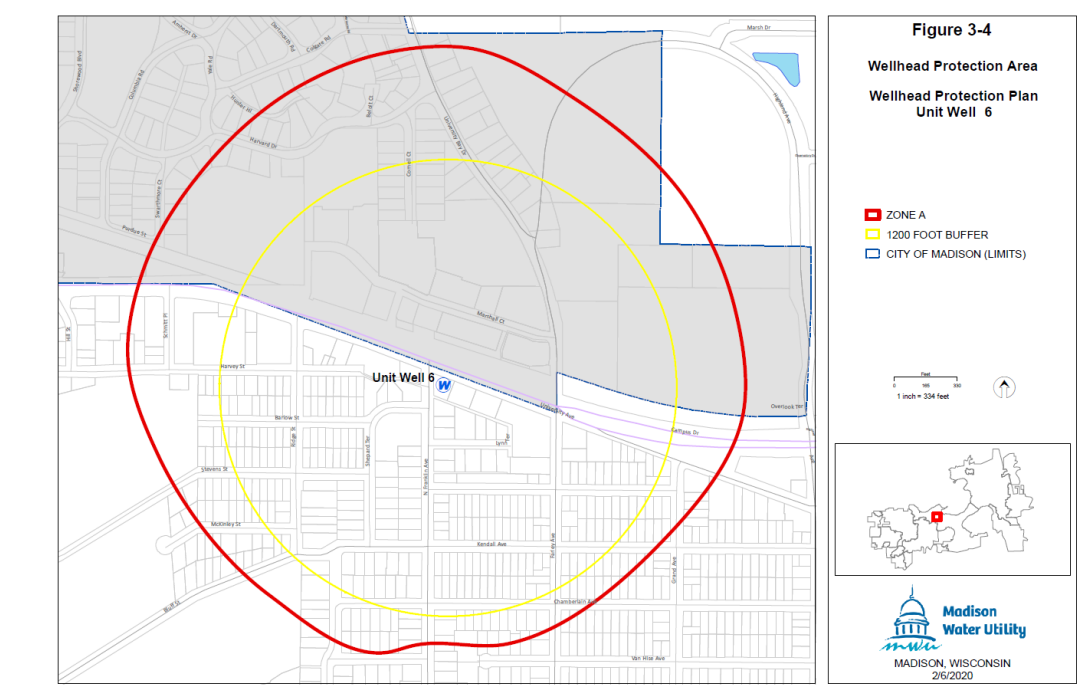
The location of Well No. 6 and the surrounding Zone A and Zone B are shown in Sec. 28.102(5)(a).

(a) Map of Wellhead Protection District No. 6."

**WELL NO. 6 - CURRENT**



**WELL NO. 6 - NEW**



3. Subdivision (a) entitled “Map of Wellhead Protection District No. 7” of Subsection (6) entitled “Wellhead Protection District No. 7” of Section 28.102 entitled “Wellhead Protection Districts” of the Madison General Ordinances is amended to read as follows:

“(6) Wellhead Protection District No. 7.

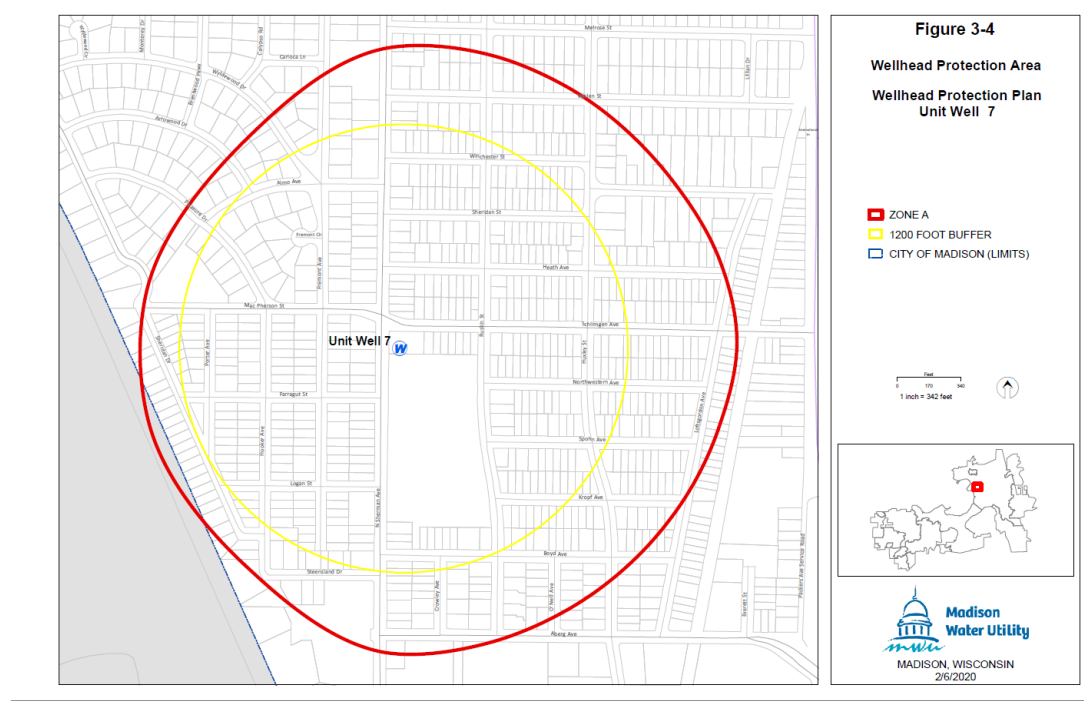
The location of Well No. 7 and the surrounding Zone A and Zone B are shown in Sec. 28.102(6)(a).

(a) Map of Wellhead Protection District No. 7.”

**WELL NO. 7 - CURRENT**



**WELL NO. 7 - NEW**



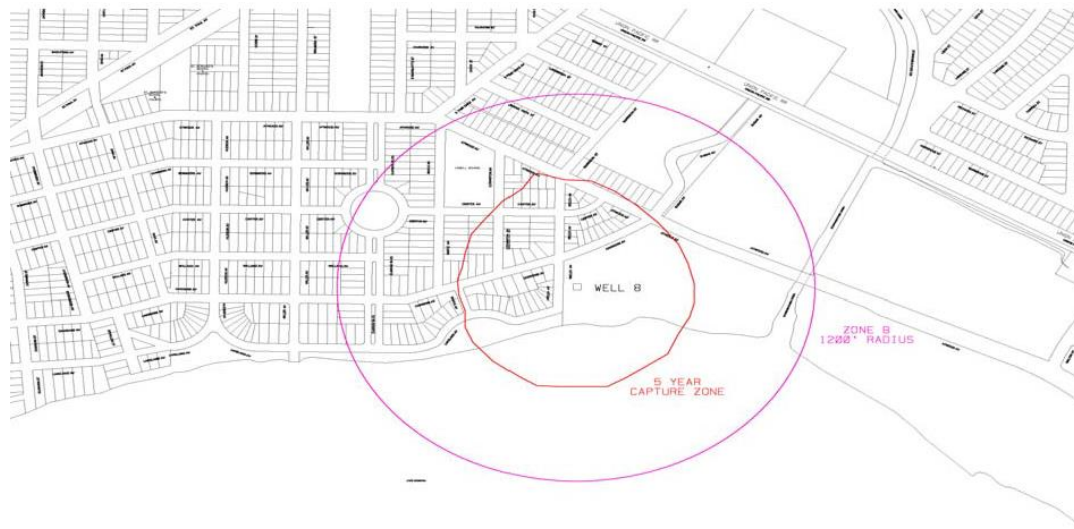
4. Subdivision (a) entitled “Map of Wellhead Protection District No. 8” of Subsection (7) entitled “Wellhead Protection District No. 8” of Section 28.102 entitled “Wellhead Protection Districts” of the Madison General Ordinances is amended to read as follows:

“(7) Wellhead Protection District No. 8.

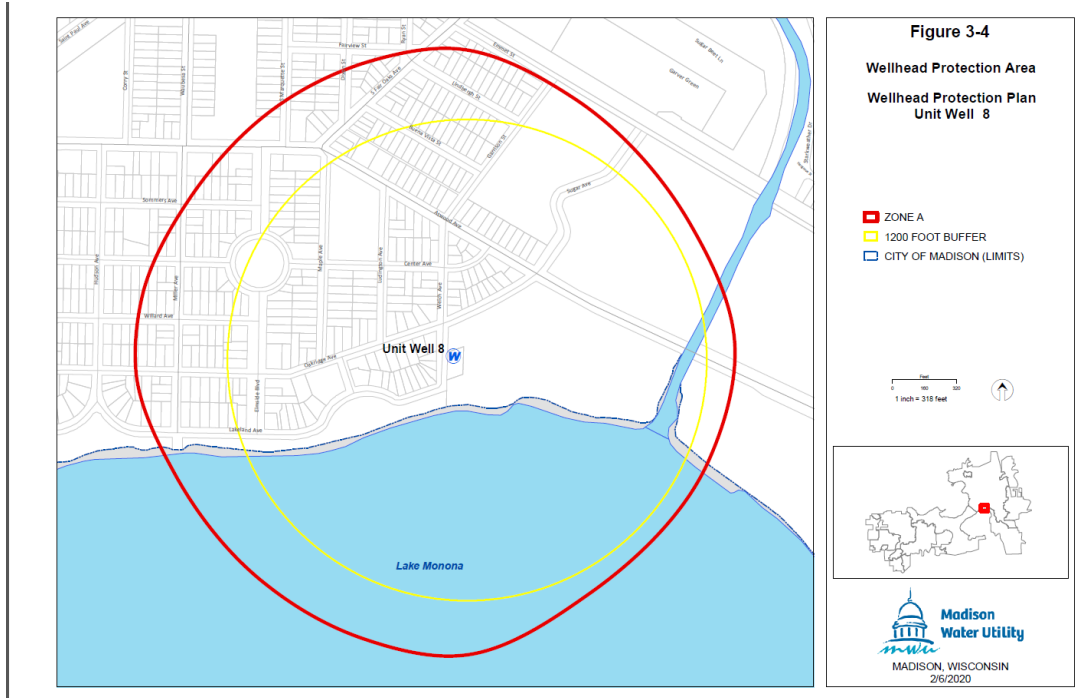
The location of Well No. 8 and the surrounding Zone A and Zone B are shown in Sec. 28.102(7)(a).

(a) Map of Wellhead Protection District No. 8.”

**WELL NO. 8 - CURRENT**



**WELL NO. 8 - NEW**

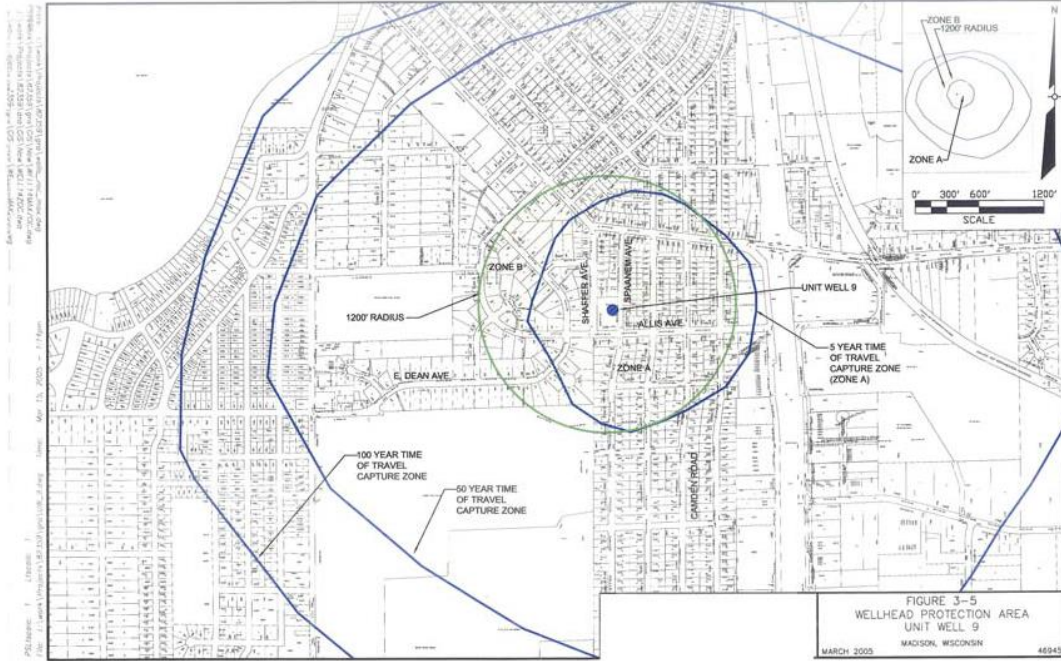


5. Subdivision (a) entitled “Map of Wellhead Protection District No. 9” of Subsection (8) entitled “Wellhead Protection District No. 9” of Section 28.102 entitled “Wellhead Protection Districts” of the Madison General Ordinances is amended to read as follows:

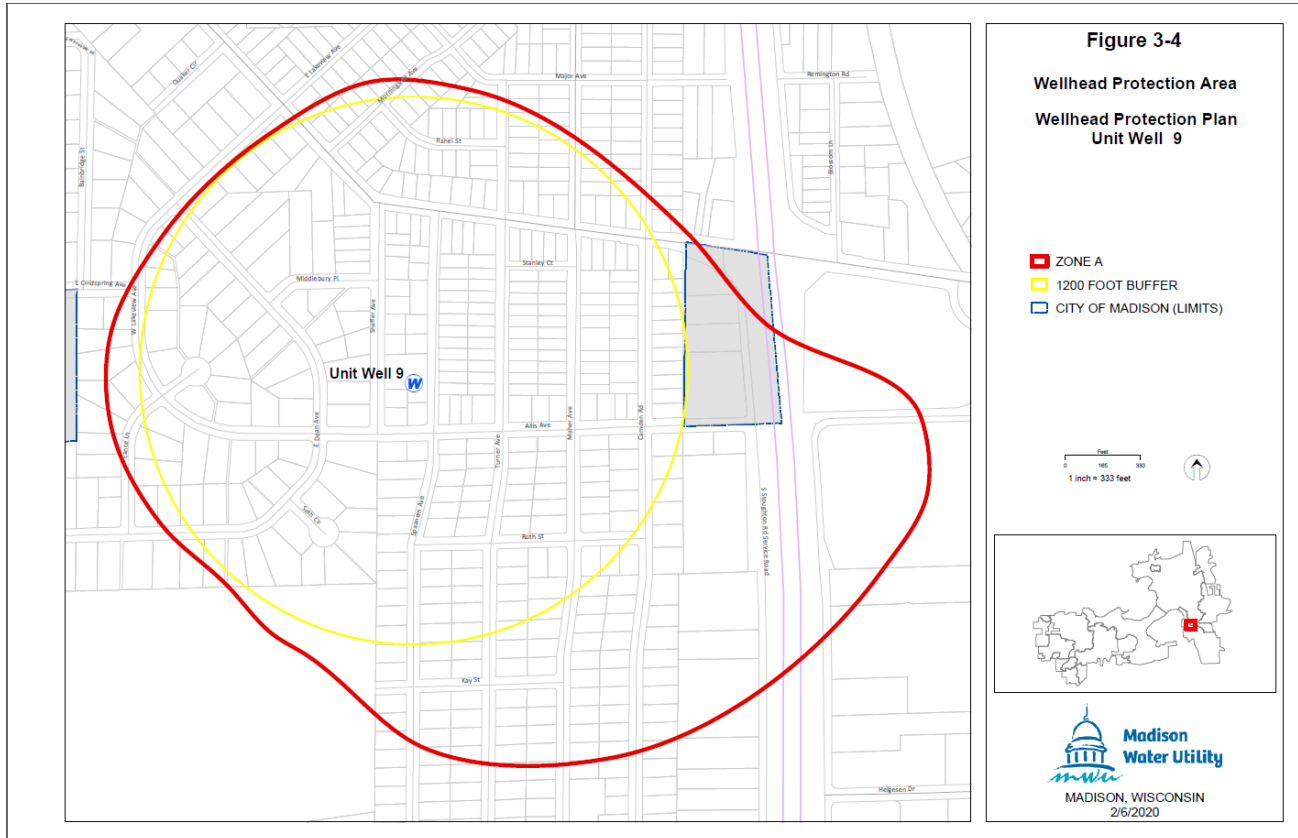
- “(8) Wellhead Protection District No. 9.  
The location of Well No. 9 and the surrounding Zone A and Zone B are shown in Sec. 28.102(8)(a).  
(a) Map of Wellhead Protection District No. 9.”



### WELL NO. 9 - CURRENT



### WELL NO. 9 - NEW



6. Subdivision (a) entitled "Map of Wellhead Protection District No. 11" of Subsection (10) entitled "Wellhead Protection District No. 11" of Section 28.102 entitled "Wellhead Protection Districts" of the Madison General Ordinances is amended to read as follows:

"(10) Wellhead Protection District No. 11.

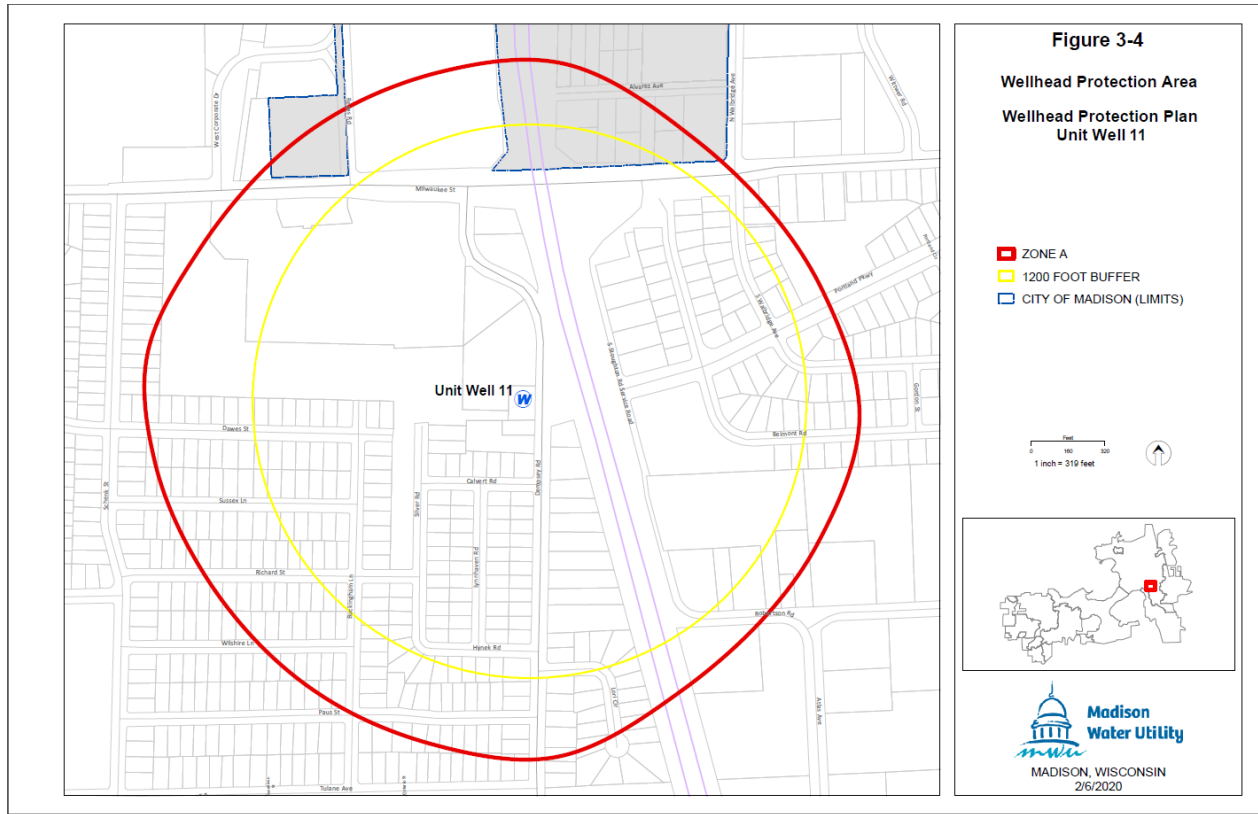
The location of Well No. 11 and the surrounding Zone A and Zone B are shown in Sec. 28.102(10)(a).

(a) Map of Wellhead Protection District No. 11."

**WELL NO. 11 - CURRENT**



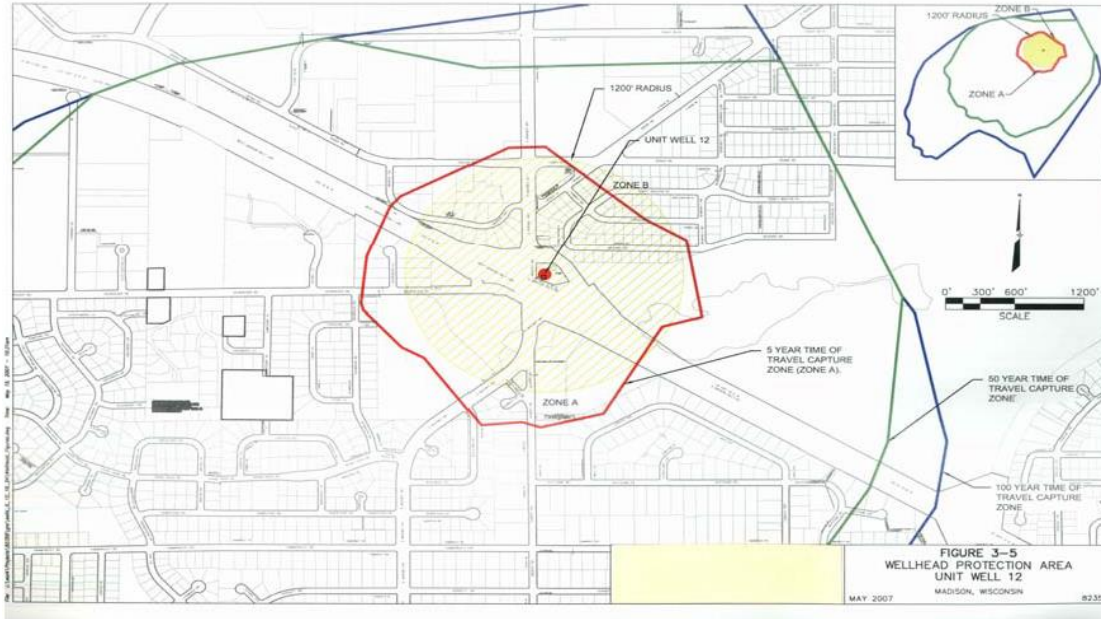
**WELL NO. 11 - NEW**



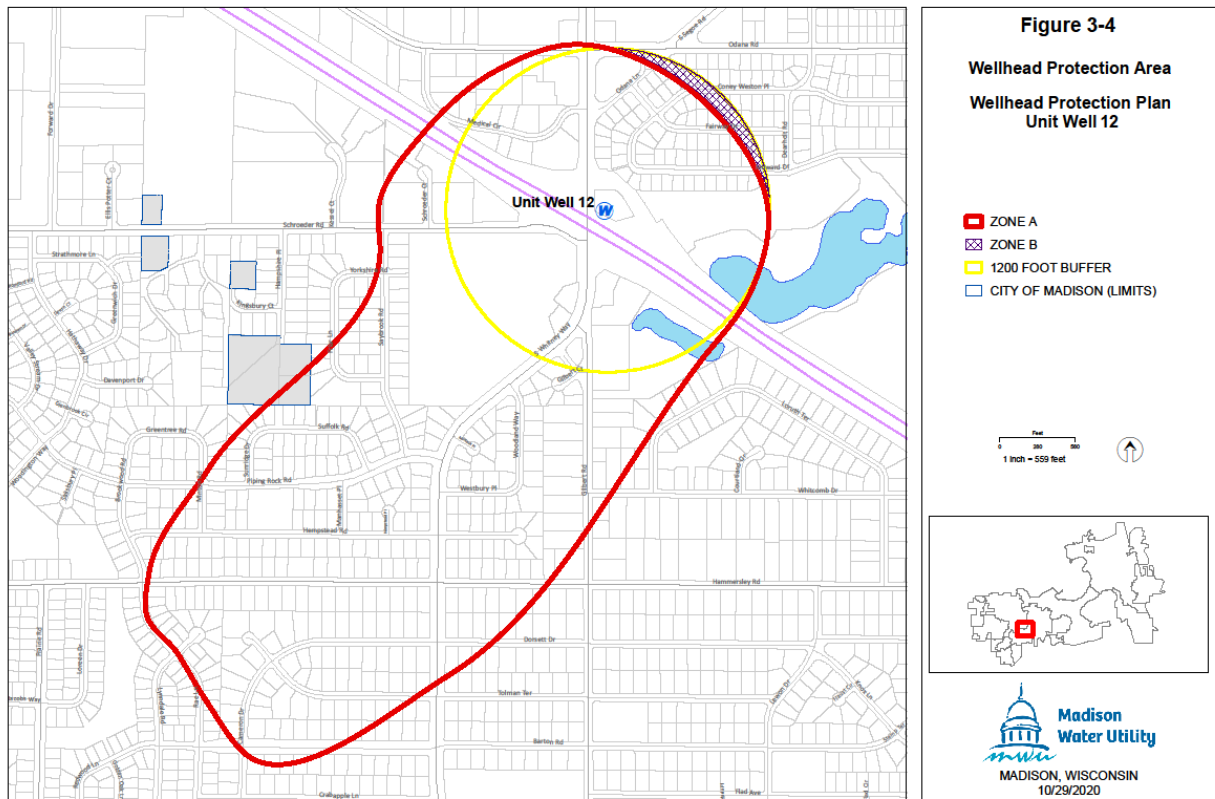
7. Subdivision (a) entitled “Map of Wellhead Protection District No. 12” of Subsection (11) entitled “Wellhead Protection District No. 12” of Section 28.102 entitled “Wellhead Protection Districts” of the Madison General Ordinances is amended to read as follows:

- “(11) Wellhead Protection District No. 12.  
The location of Well No. 12 and the surrounding Zone A and Zone B are shown in Sec. 28.102(11)(a).  
(a) Map of Wellhead Protection District No. 12.”

**WELL NO. 12 - CURRENT**



**WELL NO. 12 - NEW**



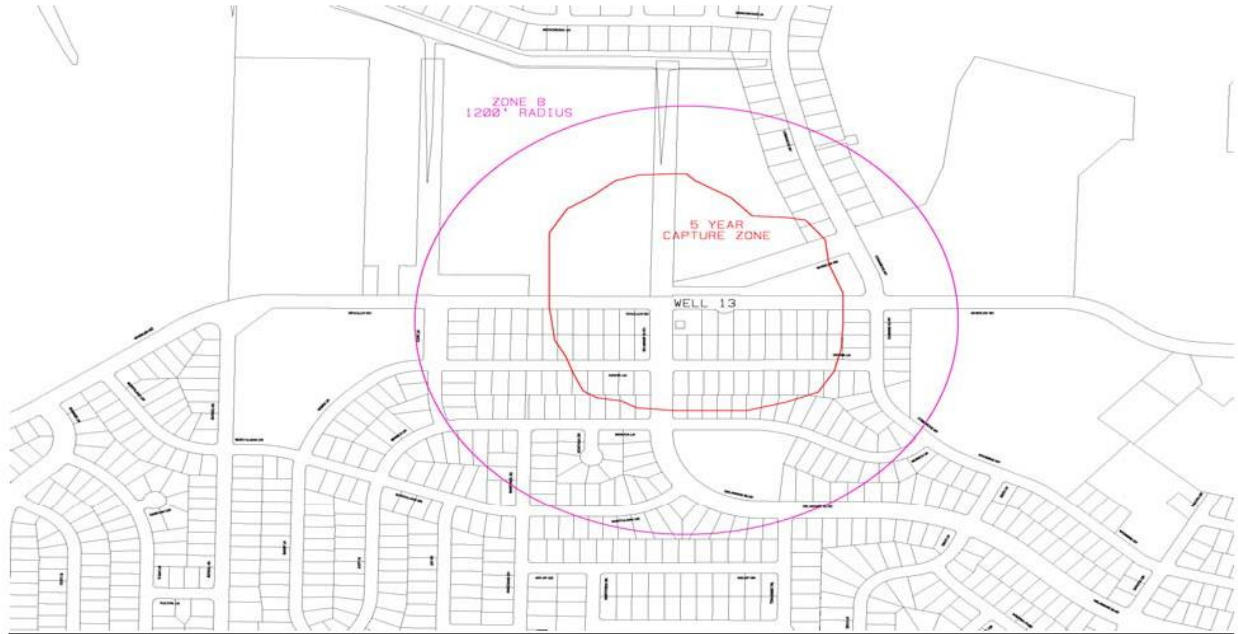
8. Subdivision (a) entitled "Map of Wellhead Protection District No. 13" of Subsection (12) entitled "Wellhead Protection District No. 13" of Section 28.102 entitled "Wellhead Protection Districts" of the Madison General Ordinances is amended to read as follows:



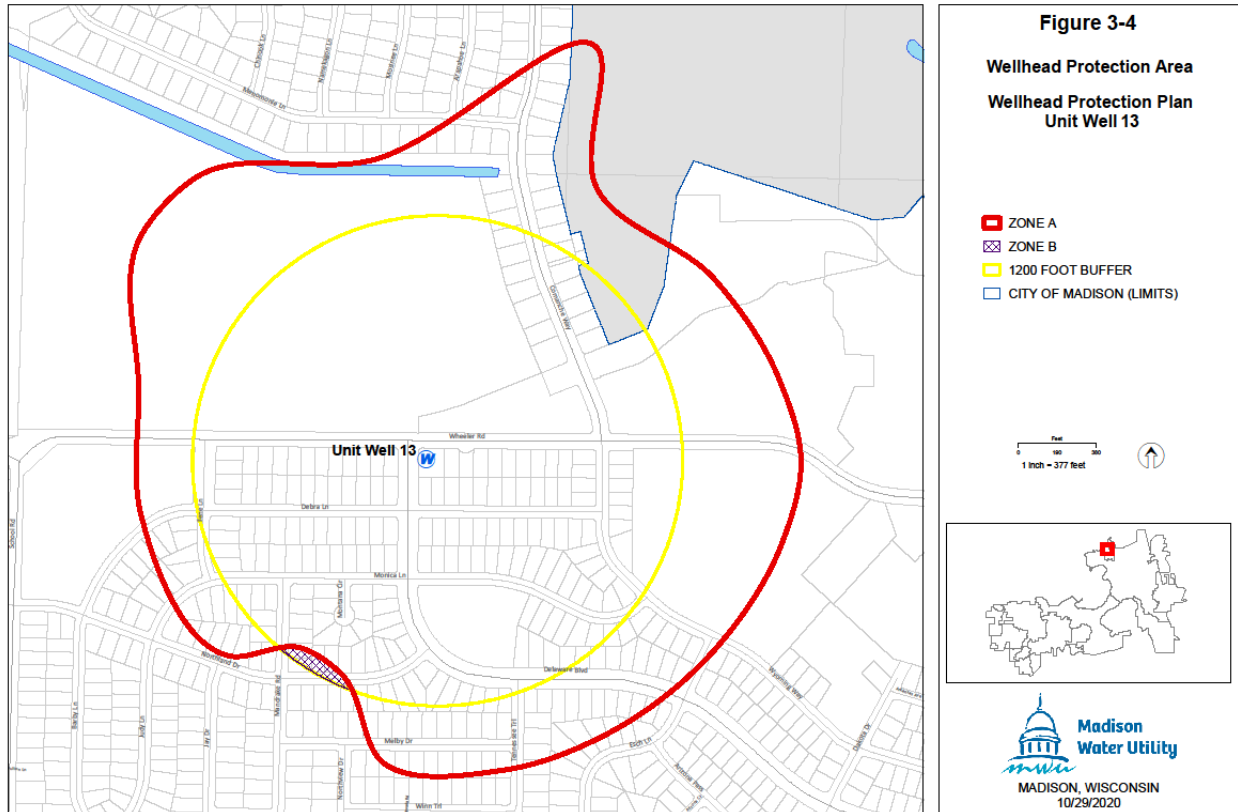
“(12) Wellhead Protection District No. 13.

The location of Well No. 13 and the surrounding Zone A and Zone B are shown in Sec. 28.102(12)(a).  
(a) Map of Wellhead Protection District No. 13.”

**WEL NO. 13 - CURRENT**



**WELL NO. 13 - NEW**



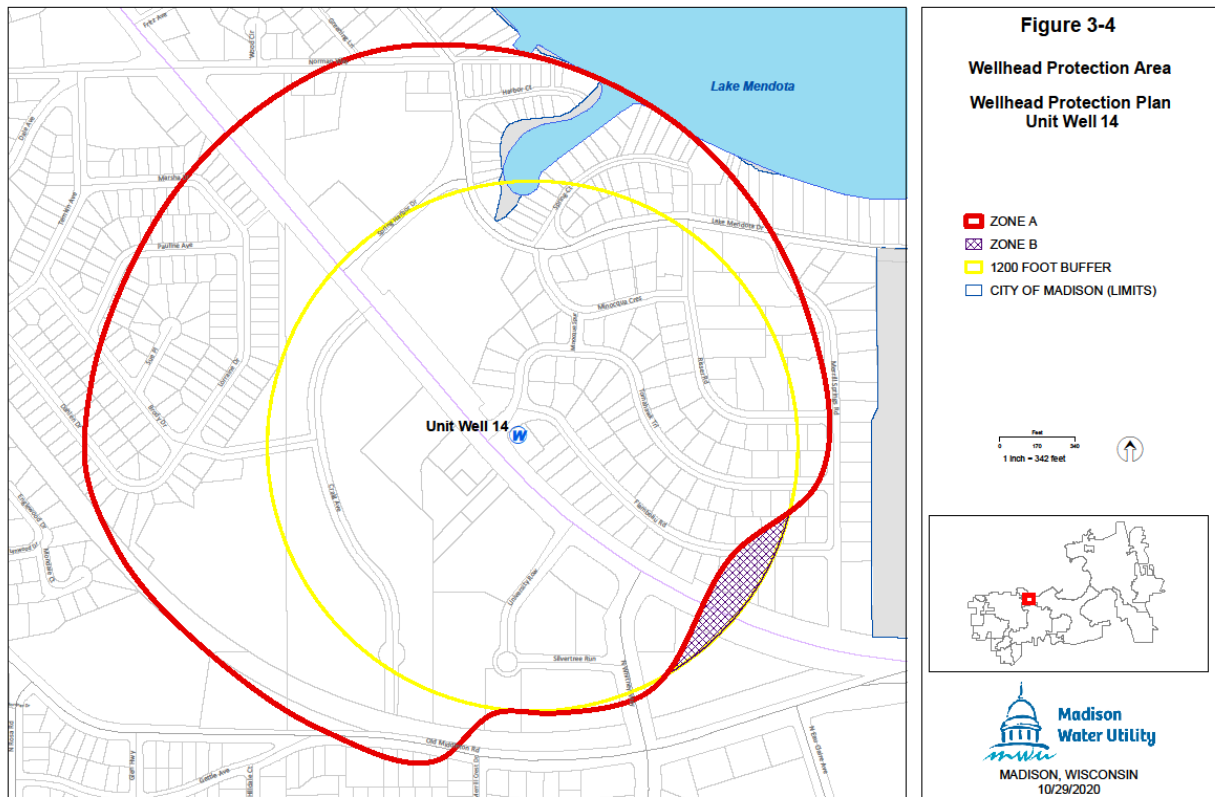
9. Subdivision (a) entitled “Map of Wellhead Protection District No. 14” of Subsection (13) entitled “Wellhead Protection District No. 14” of Section 28.102 entitled “Wellhead Protection Districts” of the Madison General Ordinances is amended to read as follows:

- “(13) Wellhead Protection District No. 14.  
The location of Well No. 14 and the surrounding Zone A and Zone B are shown in Sec. 28.102(13)(a).  
(a) Map of Wellhead Protection District No. 14.”

### WELL NO. 14 - CURRENT



### WELL NO. 14 - NEW



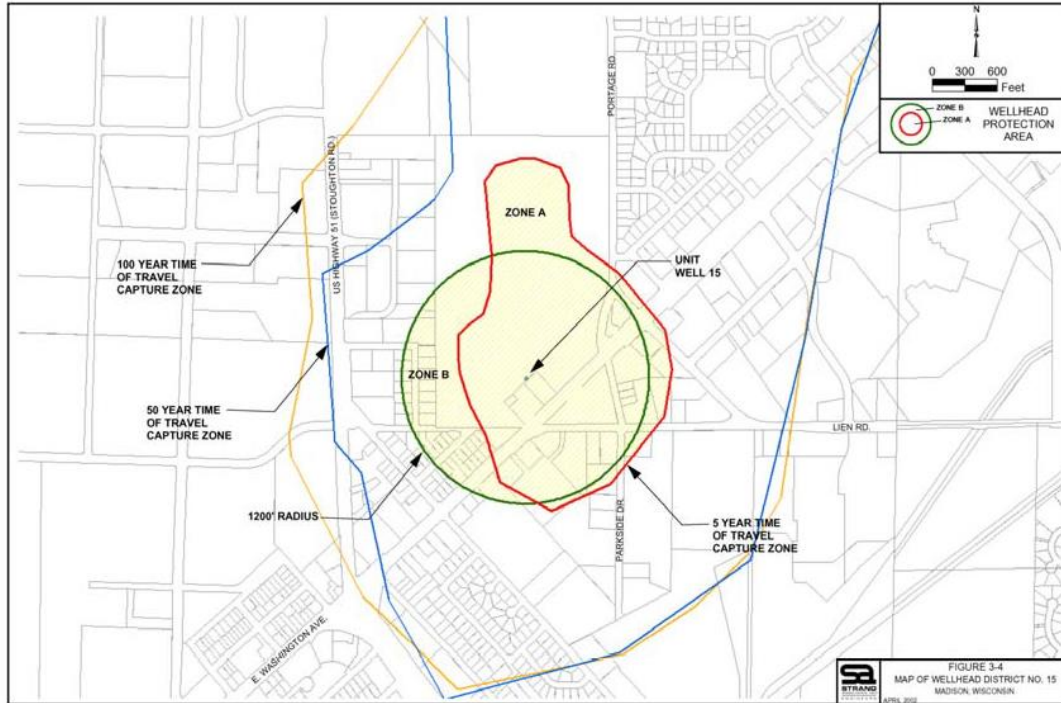
10. Subdivision (a) entitled "Map of Wellhead Protection District No. 15" of Subsection (14) entitled "Wellhead Protection District No. 15" of Section 28.102 entitled "Wellhead Protection Districts" of the Madison General Ordinances is amended to read as follows:

"(14) Wellhead Protection District No. 15.

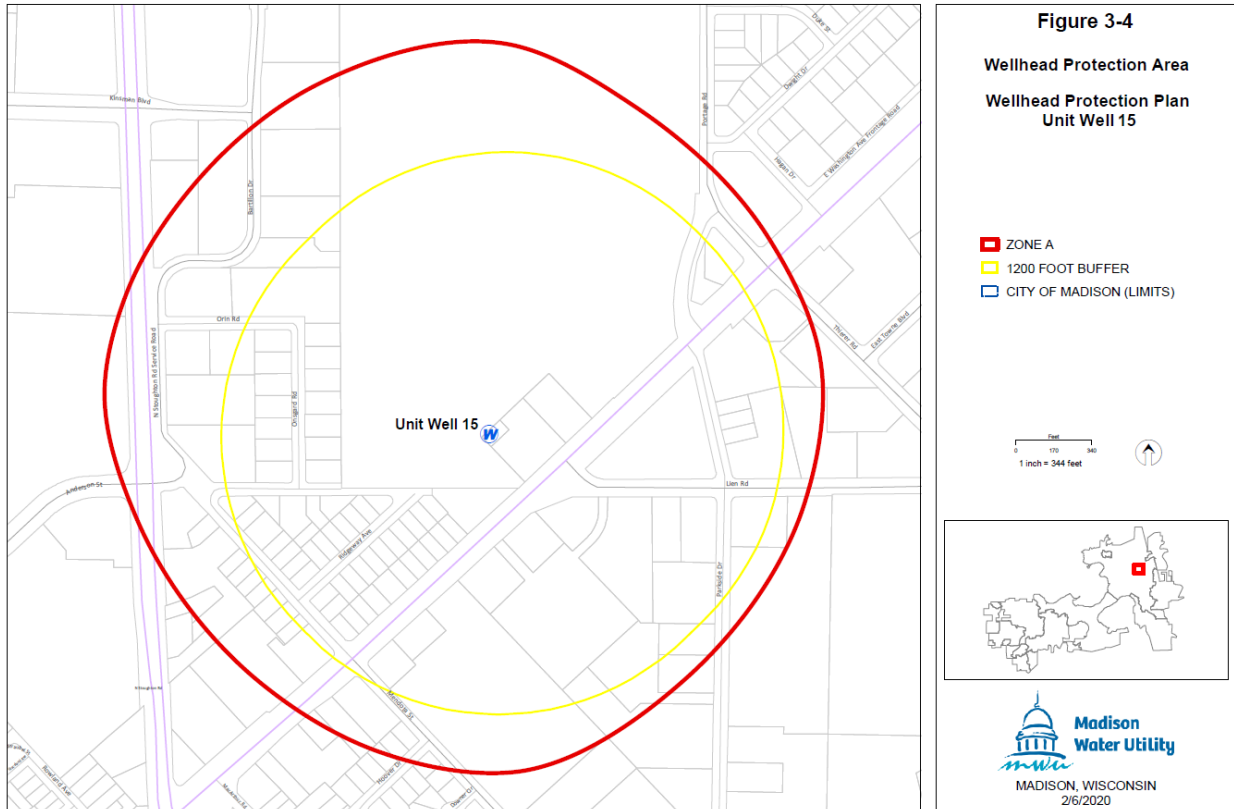
The location of Well No. 15 and the surrounding Zone A and Zone B are shown in Sec. 28.102(14)(a).

(a) Map of Wellhead Protection District No. 15."

**WELL NO. 15 - CURRENT**



**WELL NO. 15 - NEW**

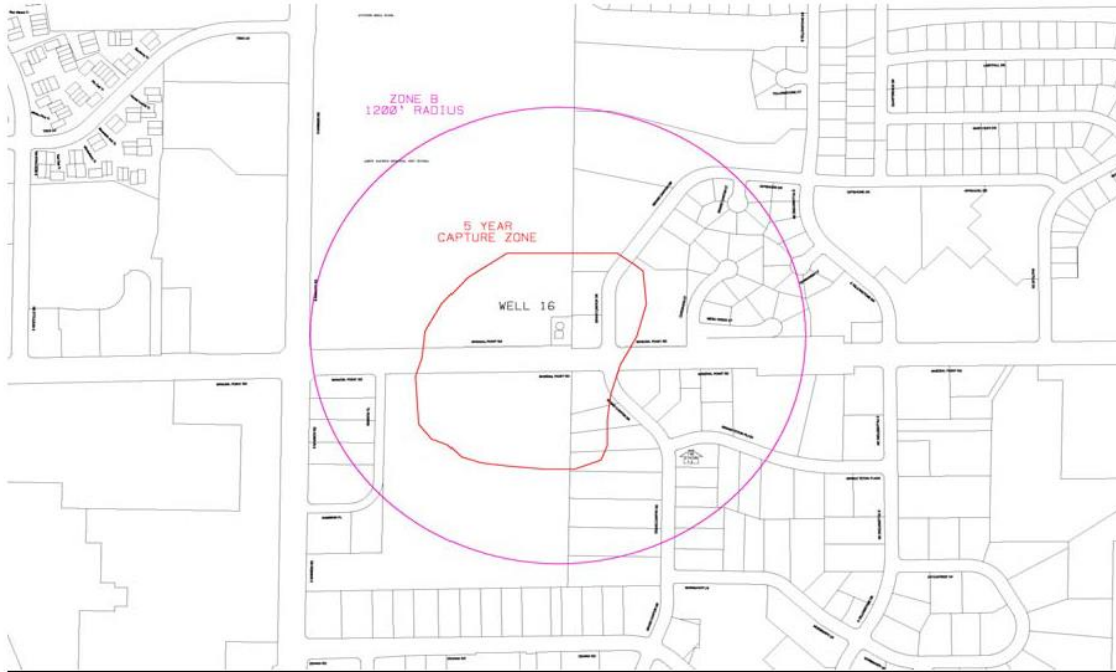


11. Subdivision (a) entitled “Map of Wellhead Protection District No. 16” of Subsection (15) entitled “Wellhead Protection District No. 16” of Section 28.102 entitled “Wellhead Protection Districts” of the Madison General Ordinances is amended to read as follows:

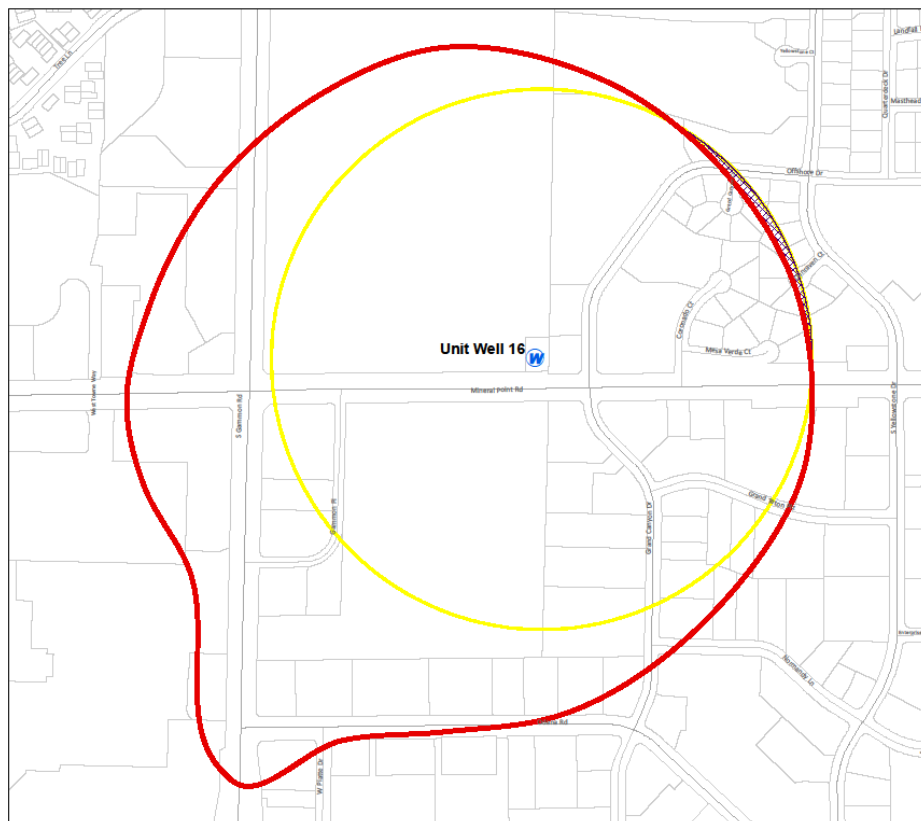
- “(15) Wellhead Protection District No. 16.  
The location of Well No. 16 and the surrounding Zone A and Zone B are shown in Sec. 28.102(15)(a).  
(a) Map of Wellhead Protection District No. 16.”



**WELL NO. 16 - CURRENT**



**WELL NO. 16 - NEW**



**Figure 3-4**  
**Wellhead Protection Area**  
**Wellhead Protection Plan**  
**Unit Well 16**

- ZONE A
- ▣ ZONE B
- 1200 FOOT BUFFER
- CITY OF MADISON (LIMITS)

Scale: 1 inch = 344 feet

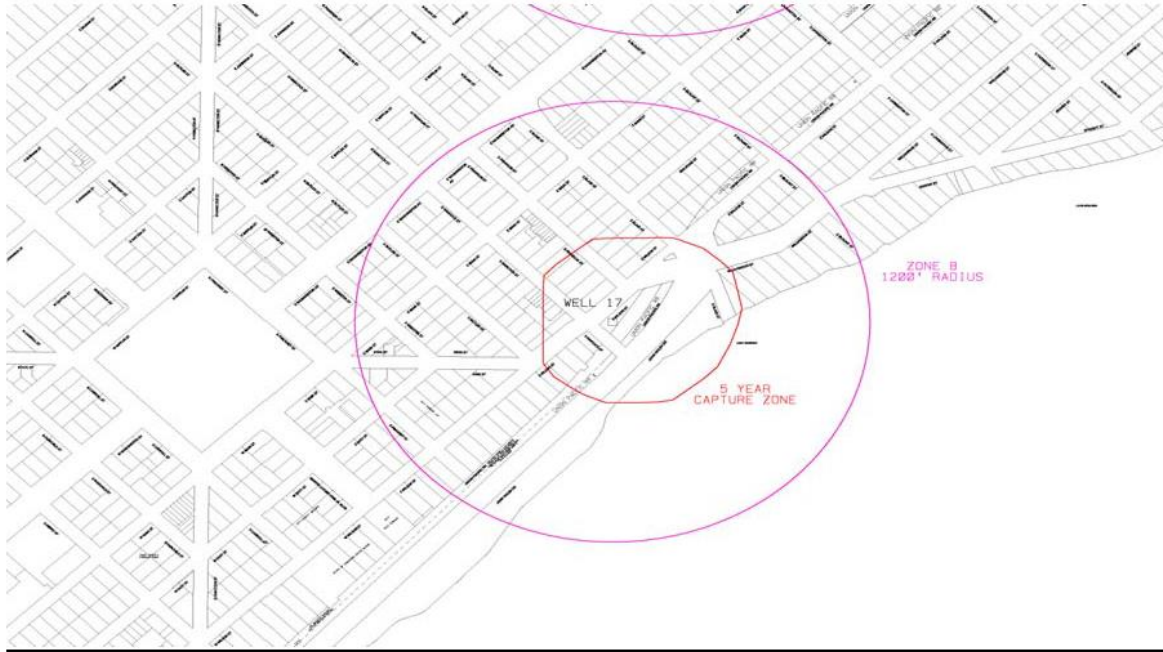
12. Subdivision (a) entitled "Map of Wellhead Protection District No. 17" of Subsection (16) entitled "Wellhead Protection District No. 17" of Section 28.102 entitled "Wellhead Protection Districts" of the Madison General Ordinances is amended to read as follows:

"(16) Wellhead Protection District No. 17.

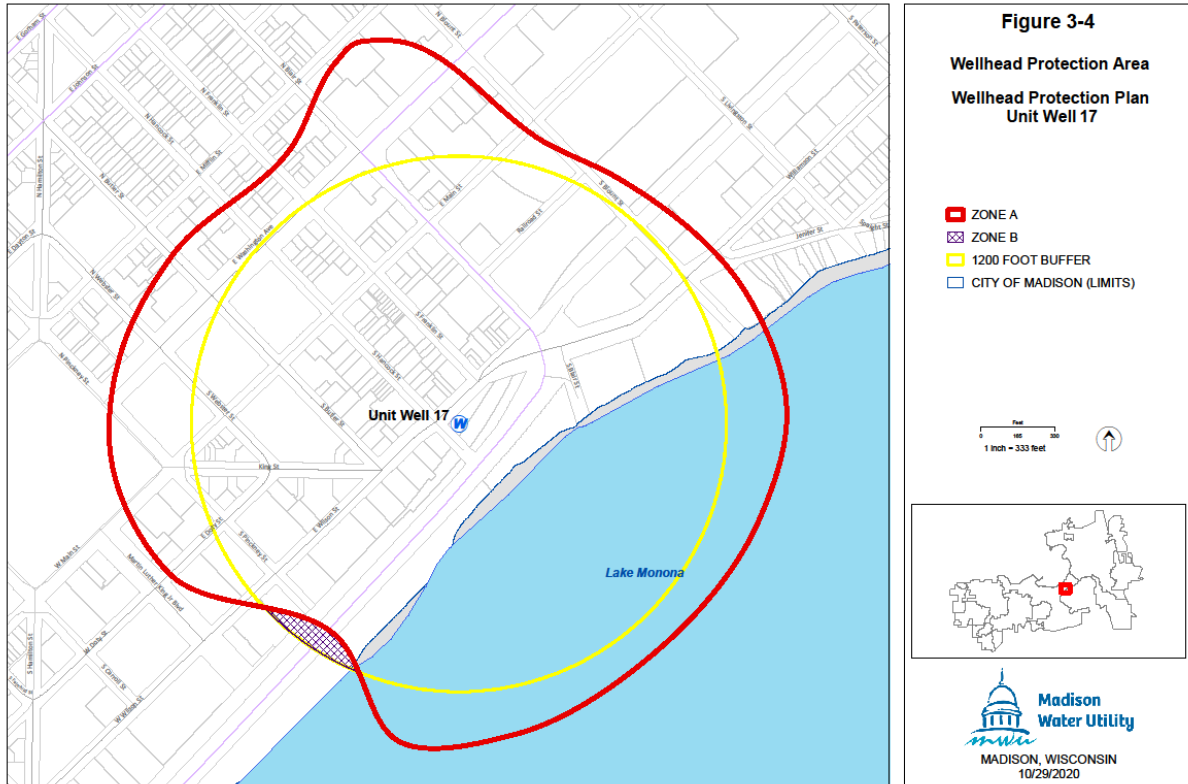
The location of Well No. 17 and the surrounding Zone A and Zone B are shown in Sec. 28.102(16)(a).

(a) Map of Wellhead Protection District No. 17."

**WELL NO. 17 - CURRENT**



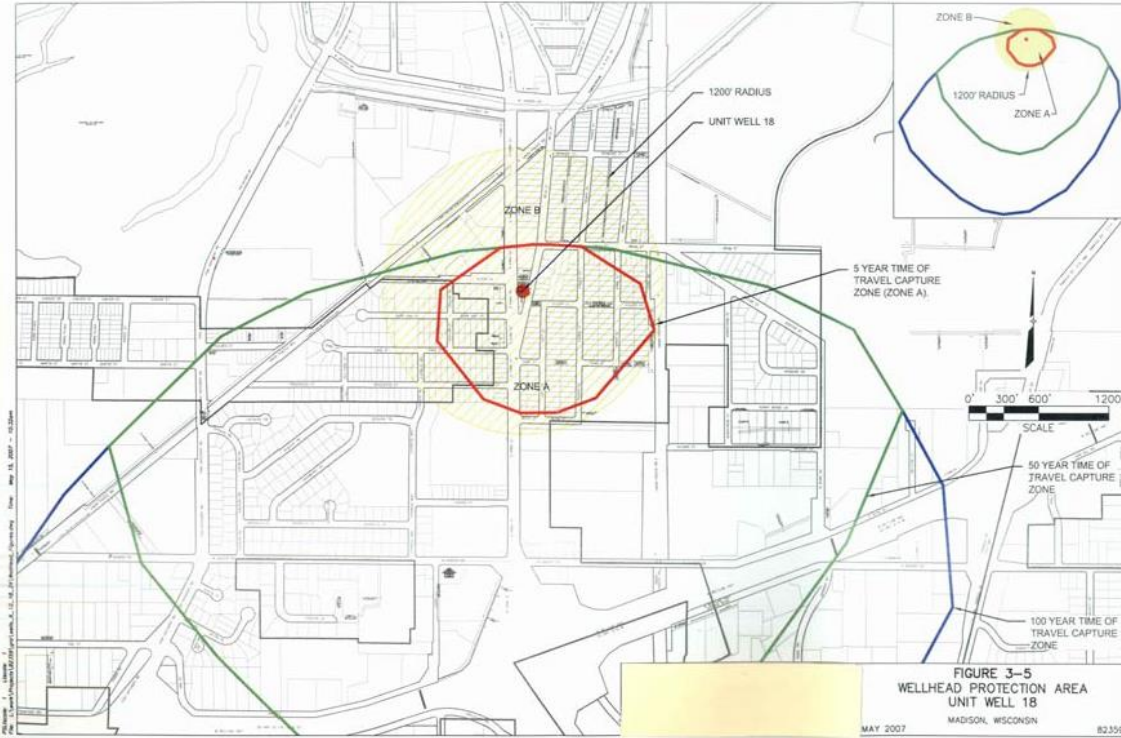
**WELL NO. 17 - NEW**



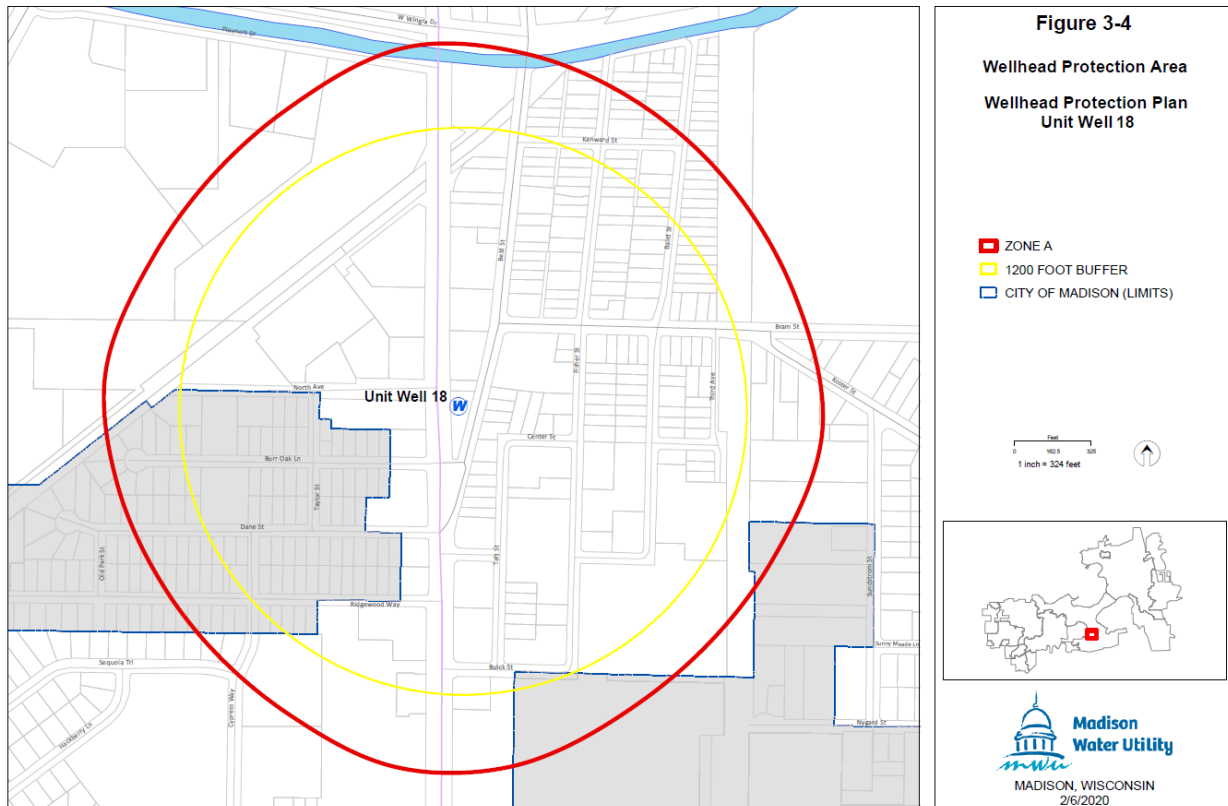
13. Subdivision (a) entitled “Map of Wellhead Protection District No. 18” of Subsection (17) entitled “Wellhead Protection District No. 18” of Section 28.102 entitled “Wellhead Protection Districts” of the Madison General Ordinances is amended to read as follows:

- “(17) Wellhead Protection District No. 18.  
The location of Well No. 18 and the surrounding Zone A and Zone B are shown in Sec. 28.102(17)(a).  
(a) Map of Wellhead Protection District No. 18.”

**WELL NO. 18 - CURRENT**



**WELL NO. 18 - NEW**



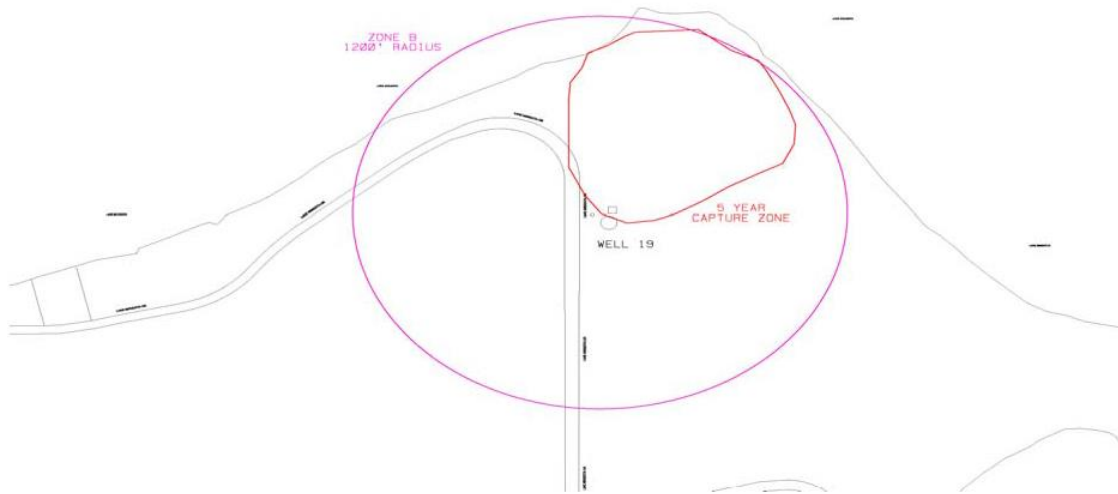
14. Subdivision (a) entitled "Map of Wellhead Protection District No. 19" of Subsection (18) entitled "Wellhead Protection District No. 19" of Section 28.102 entitled "Wellhead Protection Districts" of the Madison General Ordinances is amended to read as follows:

"(18) Wellhead Protection District No. 19.

The location of Well No. 19 and the surrounding Zone A and Zone B are shown in Sec. 28.102(18)(a).

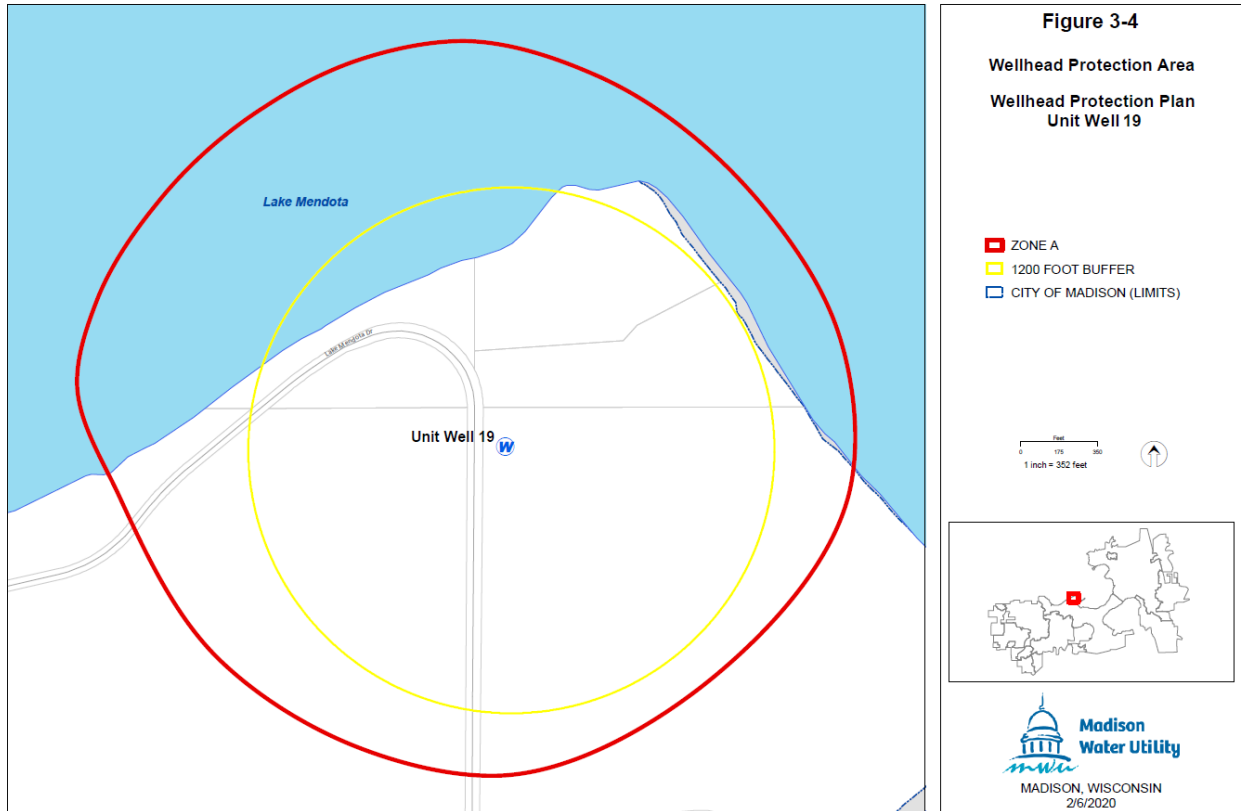
(a) Map of Wellhead Protection District No. 19."

**WELL NO. 19 - CURRENT**





**WELL NO. 19 - NEW**



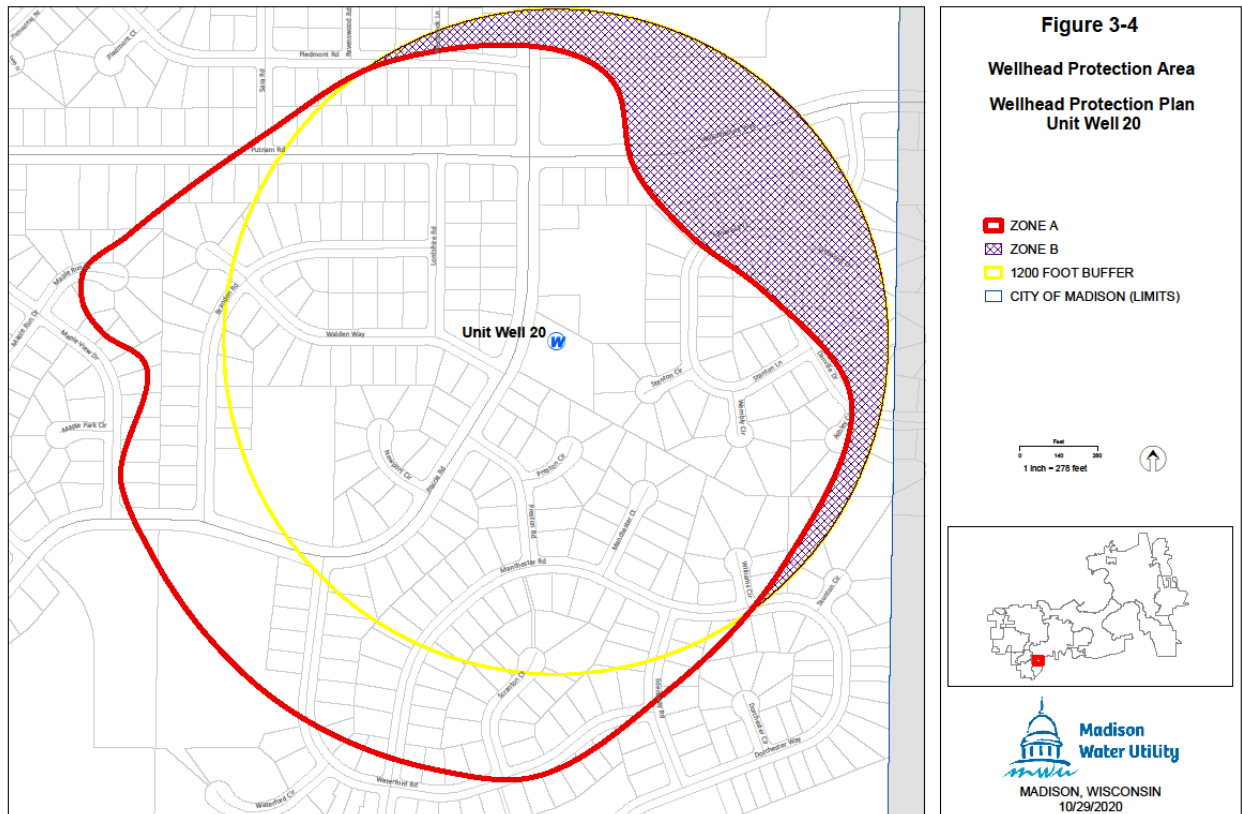
15. Subdivision (a) entitled “Map of Wellhead Protection District No. 20” of Subsection (19) entitled “Wellhead Protection District No. 20” of Section 28.102 entitled “Wellhead Protection Districts” of the Madison General Ordinances is amended to read as follows:

- “(19) Wellhead Protection District No. 20.  
The location of Well No. 20 and the surrounding Zone A and Zone B are shown in Sec. 28.102(19)(a).  
(a) Map of Wellhead Protection District No. 20.”

**WELL NO. 20 - CURRENT**



**WELL NO. 20 - NEW**



16. Subdivision (a) entitled "Map of Wellhead Protection District No. 24" of Subsection (21) entitled "Wellhead Protection District No. 24" of Section 28.102 entitled "Wellhead Protection Districts" of the Madison General Ordinances is amended to read as follows:

"(21) Wellhead Protection District No. 24.

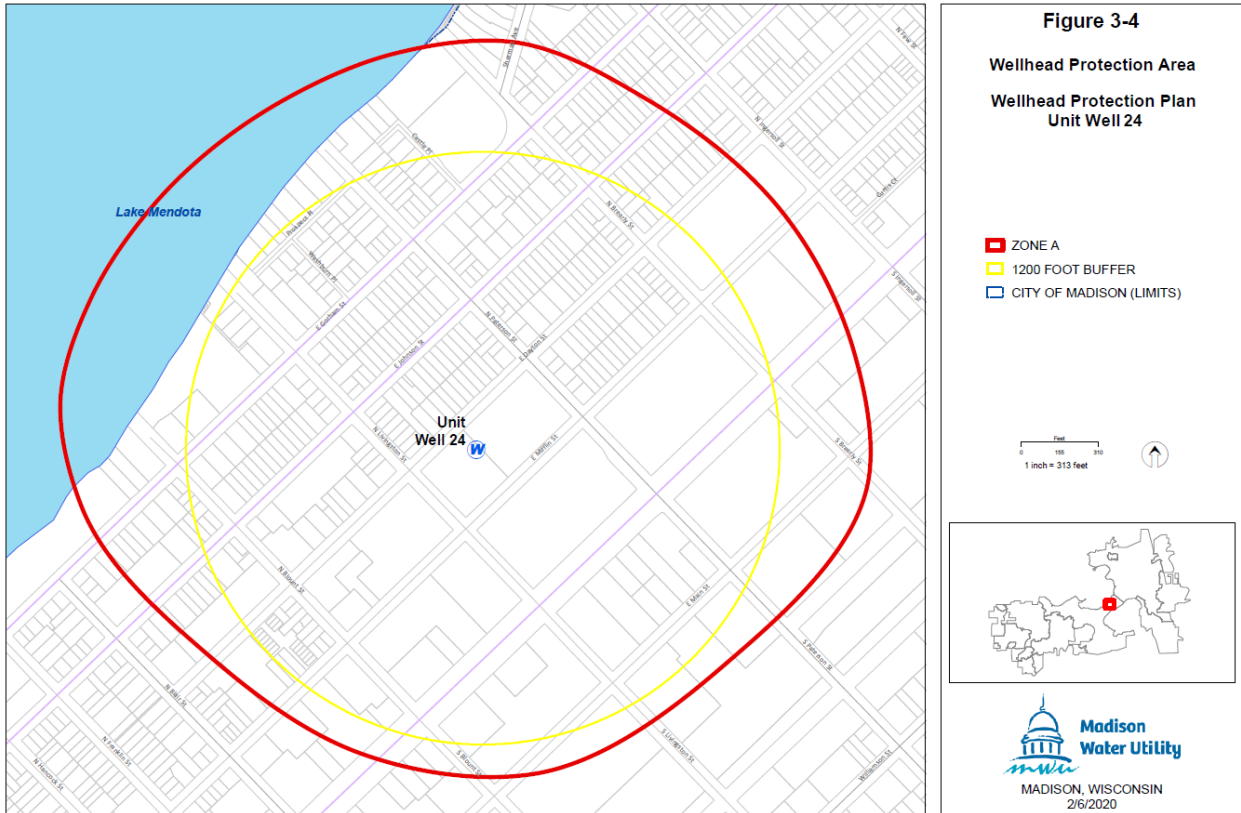
The location of Well No. 24 and the surrounding Zone A and Zone B are shown in Sec. 28.102(21)(a).

(a) Map of Wellhead Protection District No. 24."

**WELL NO. 24 - CURRENT**



**WELL NO. 24 - NEW**



17. Subdivision (a) entitled “Map of Wellhead Protection District No. 25” of Subsection (22) entitled “Wellhead Protection District No. 25” of Section 28.102 entitled “Wellhead Protection Districts” of the Madison General Ordinances is amended to read as follows:

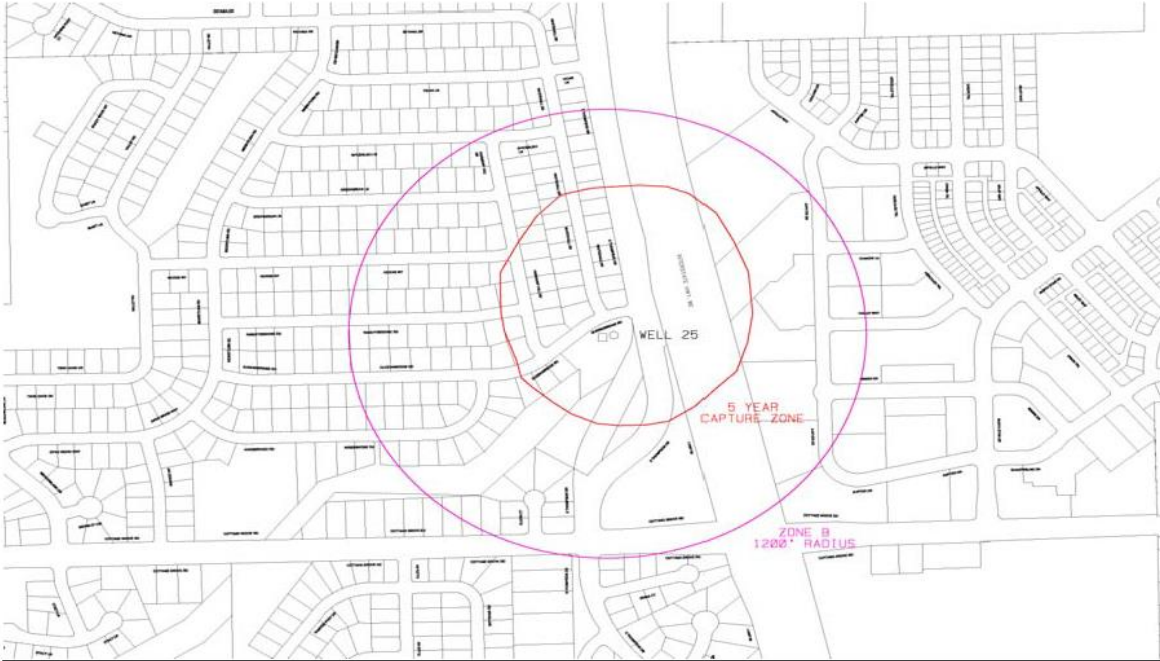
“(22) Wellhead Protection District No. 25.

The location of Well No. 25 and the surrounding Zone A and Zone B are shown in Sec. 28.102(22)(a).

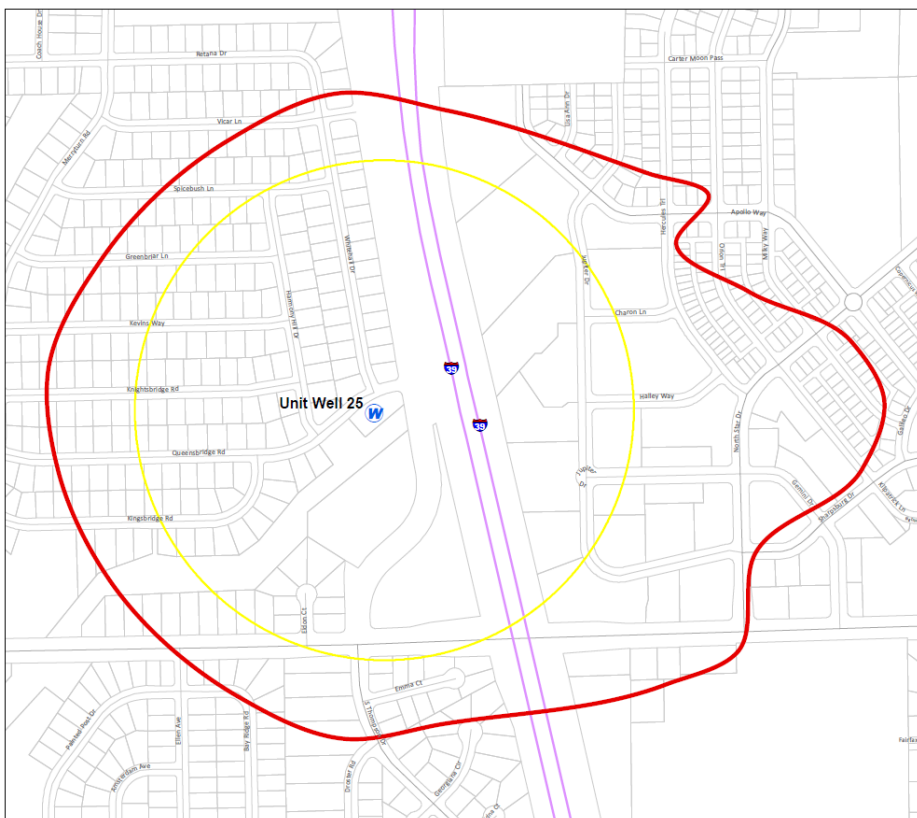
(a) Map of Wellhead Protection District No. 25.”



**WELL NO. 25 - CURRENT**






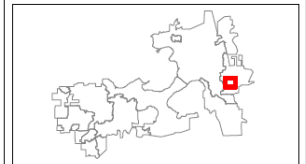
**WELL NO. 25 - NEW**



**Figure 3-4**

**Wellhead Protection Area  
Wellhead Protection Plan  
Unit Well 25**

-  ZONE A
-  1200 FOOT BUFFER
-  CITY OF MADISON (LIMITS)





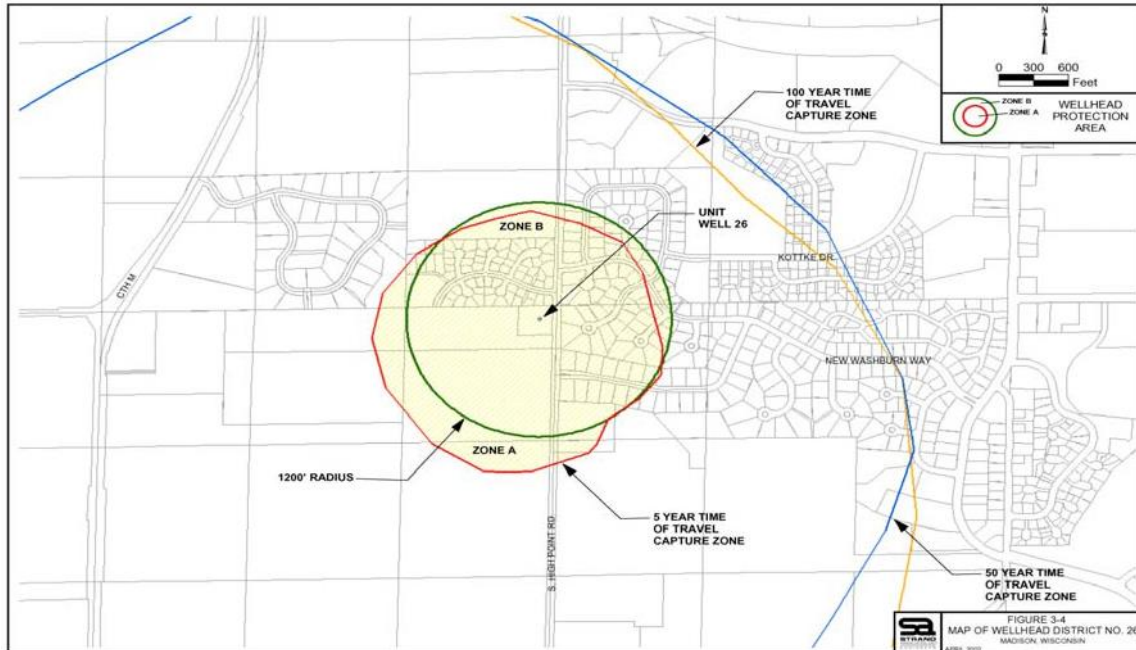
18. Subdivision (a) entitled "Map of Wellhead Protection District No. 26" of Subsection (23) entitled "Wellhead Protection District No. 26" of Section 28.102 entitled "Wellhead Protection Districts" of the Madison General Ordinances is amended to read as follows:

"(23) Wellhead Protection District No. 26.

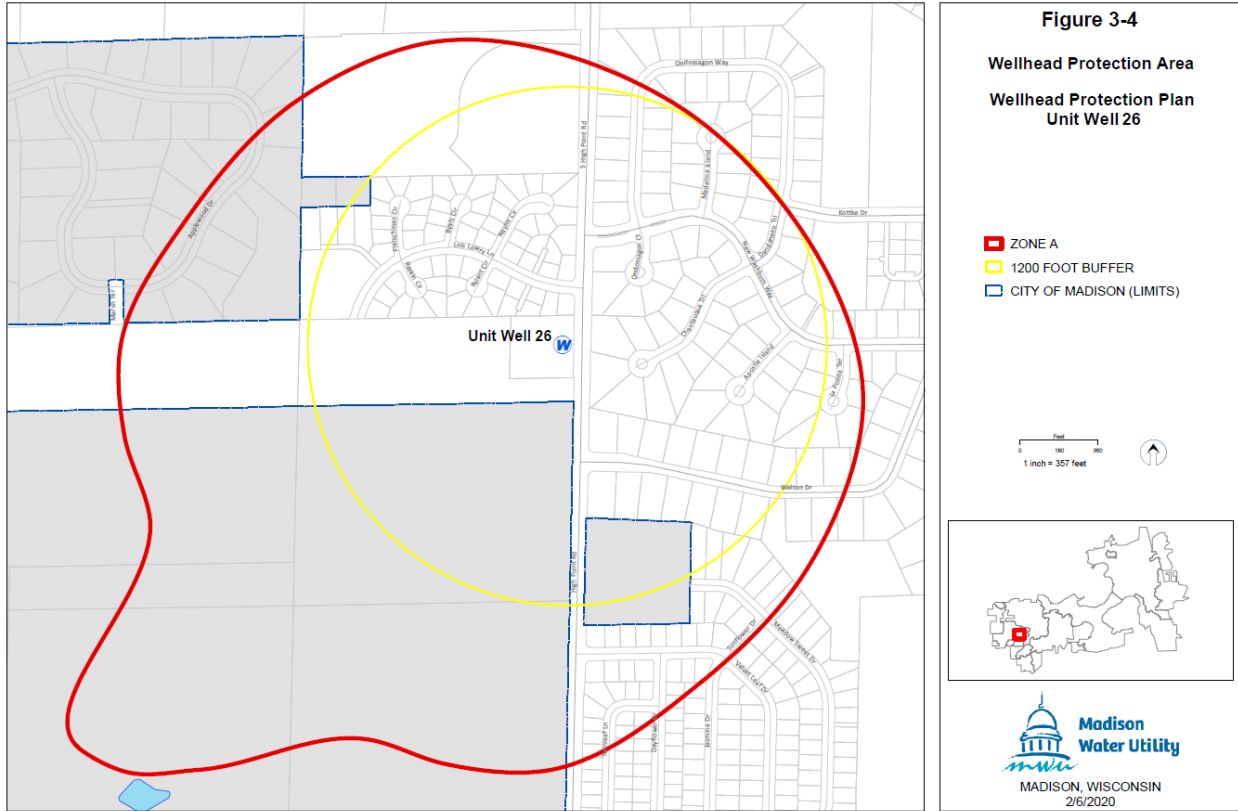
The location of Well No. 26 and the surrounding Zone A and Zone B are shown in Sec. 28.102(23)(a).

(a) Map of Wellhead Protection District No. 26."

**WELL NO. 26 - CURRENT**



**WELL NO. 26 - NEW**



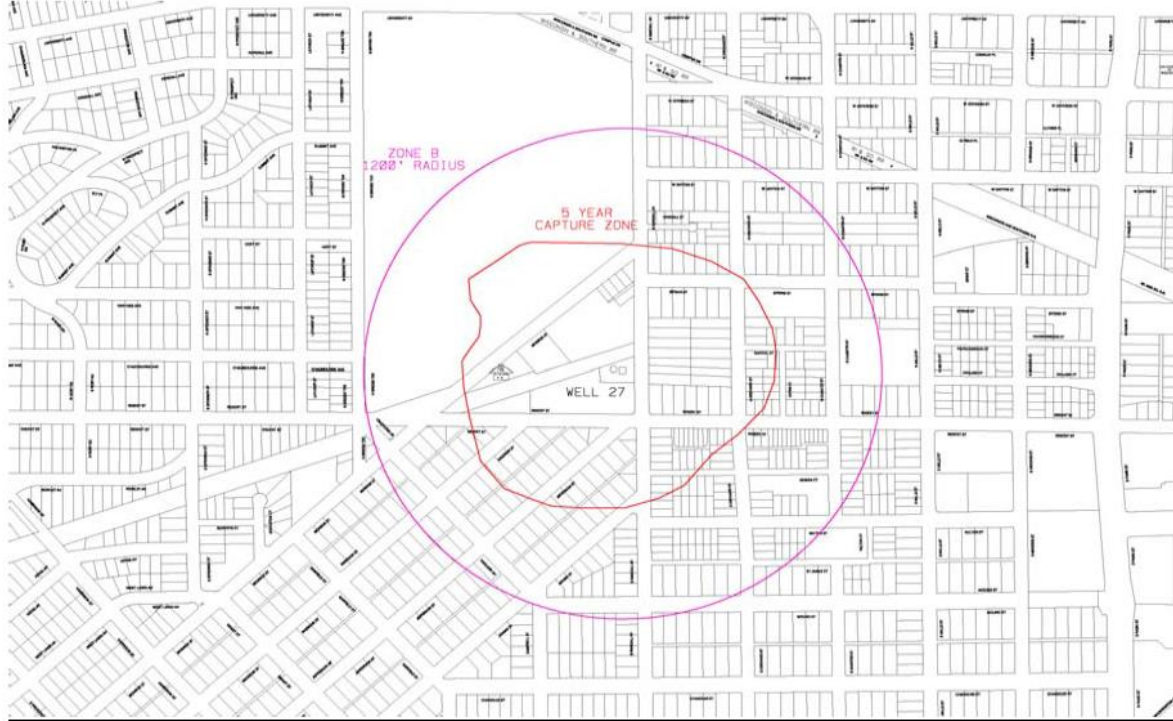
19. Subdivision (a) entitled “Map of Wellhead Protection District No. 27” of Subsection (24) entitled “Wellhead Protection District No. 27” of Section 28.102 entitled “Wellhead Protection Districts” of the Madison General Ordinances is amended to read as follows:

“(24) Wellhead Protection District No. 27.

The location of Well No. 27 and the surrounding Zone A and Zone B are shown in Sec. 28.102(24)(a).

(a) Map of Wellhead Protection District No. 27.”

### WELL NO. 27 - CURRENT



### WELL NO. 27 - NEW

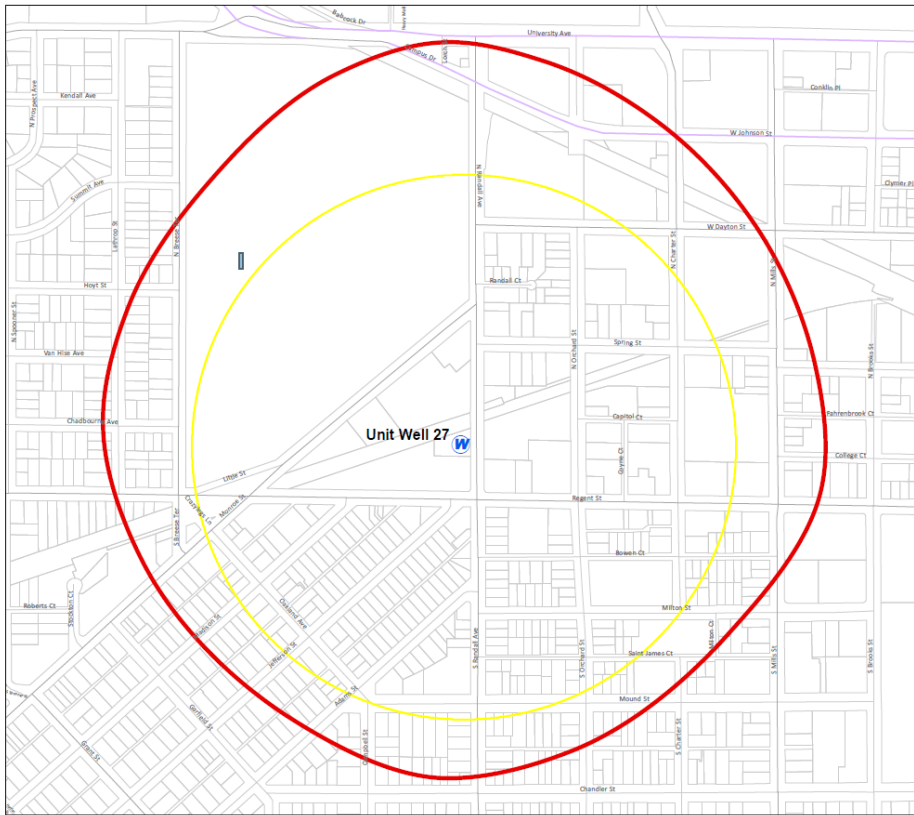
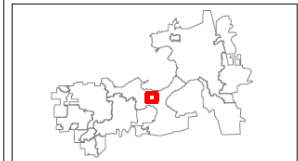


Figure 3-4

Wellhead Protection Area  
Wellhead Protection Plan  
Unit Well 27

- ZONE A
- 1200 FOOT BUFFER
- CITY OF MADISON (LIMITS)

0 150 300 Feet  
1 inch = 340 feet



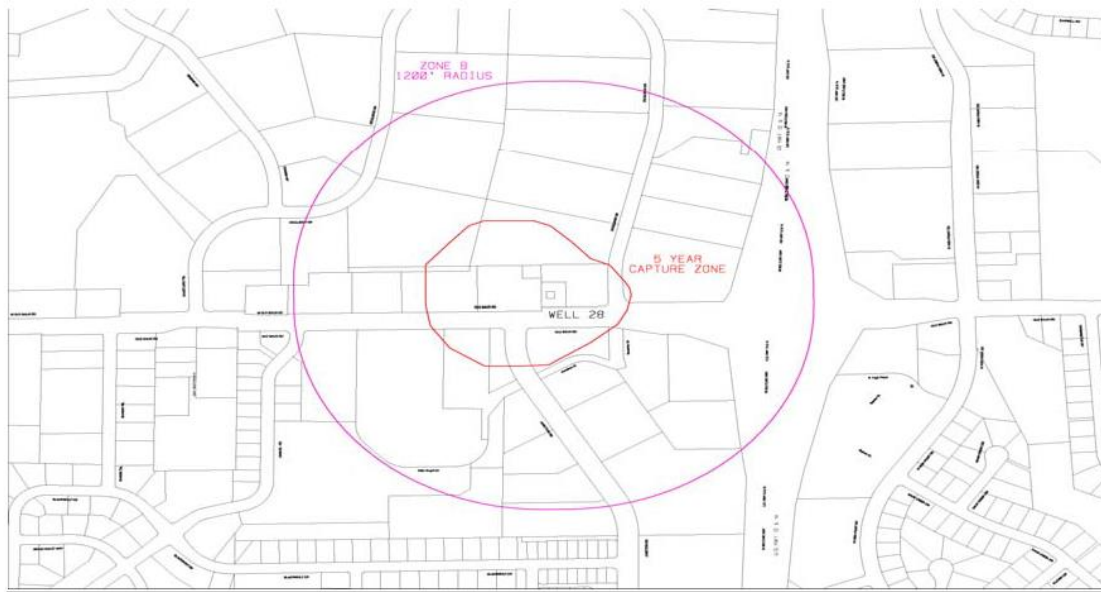
20. Subdivision (a) entitled "Map of Wellhead Protection District No. 28" of Subsection (25) entitled "Wellhead Protection District No. 28" of Section 28.102 entitled "Wellhead Protection Districts" of the Madison General Ordinances is amended to read as follows:

"(25) Wellhead Protection District No. 28.

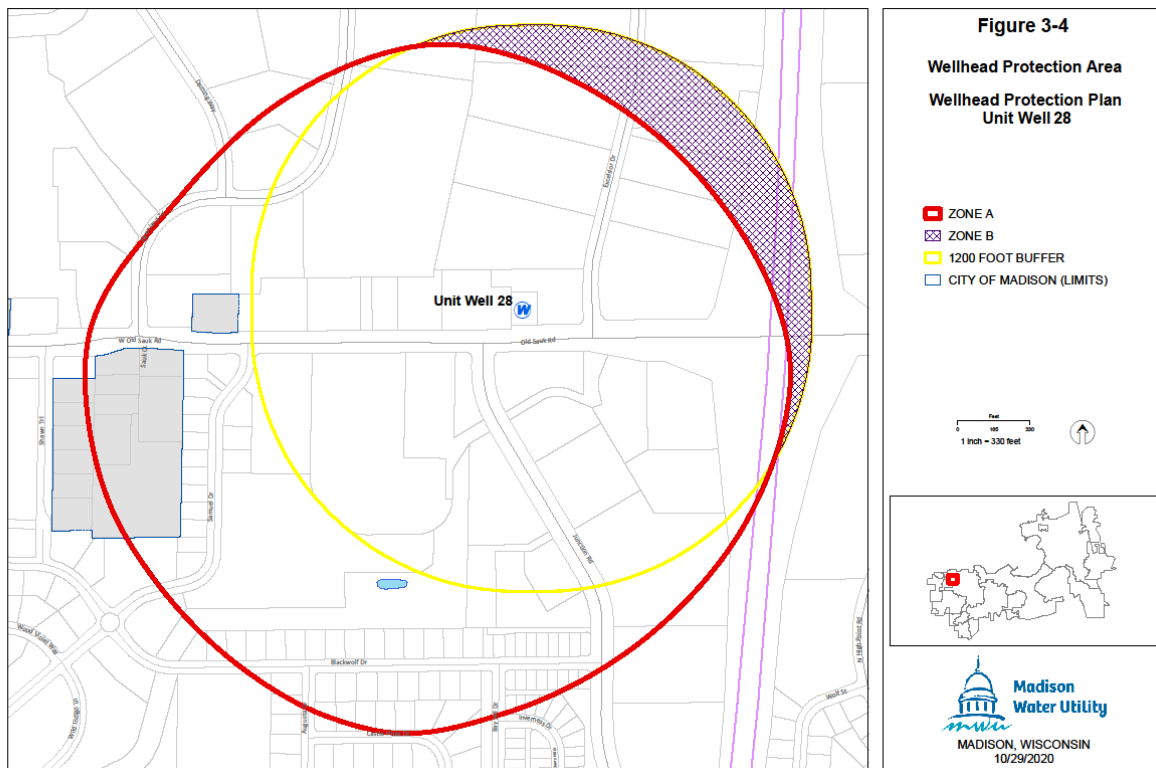
The location of Well No. 28 and the surrounding Zone A and Zone B are shown in Sec. 28.102(25)(a).

(a) Map of Wellhead Protection District No. 28."

**WELL NO. 28 - CURRENT**



**WELL NO. 28 - NEW**



21. Subdivision (a) entitled “Map of Wellhead Protection District No. 29” of Subsection (26) entitled “Wellhead Protection District No. 29” of Section 28.102 entitled “Wellhead Protection Districts” of the Madison General Ordinances is amended to read as follows:

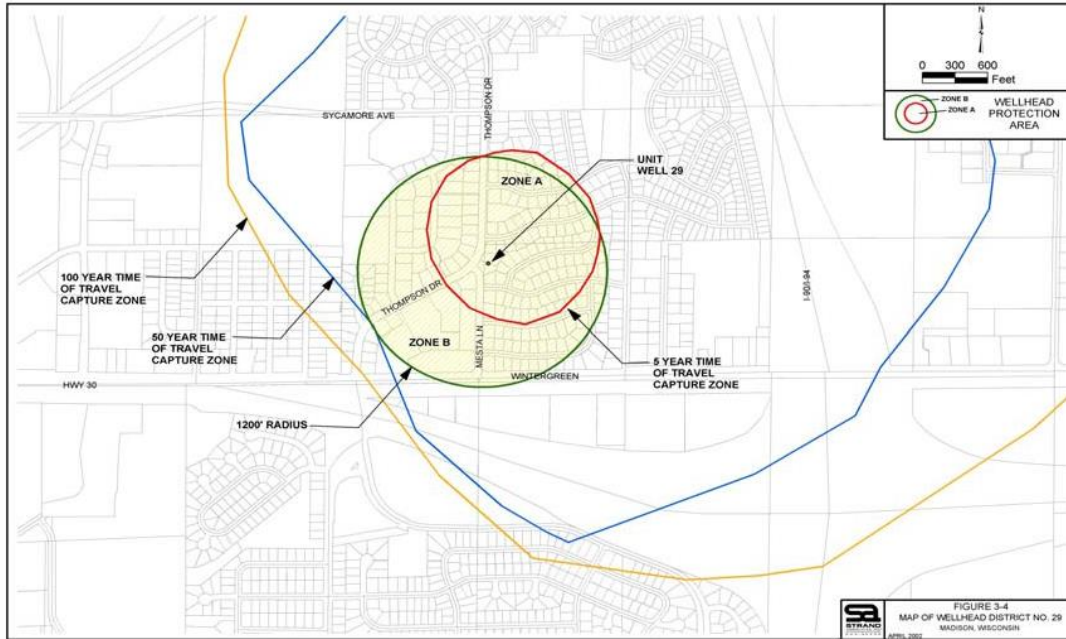


“(26) Wellhead Protection District No. 29.

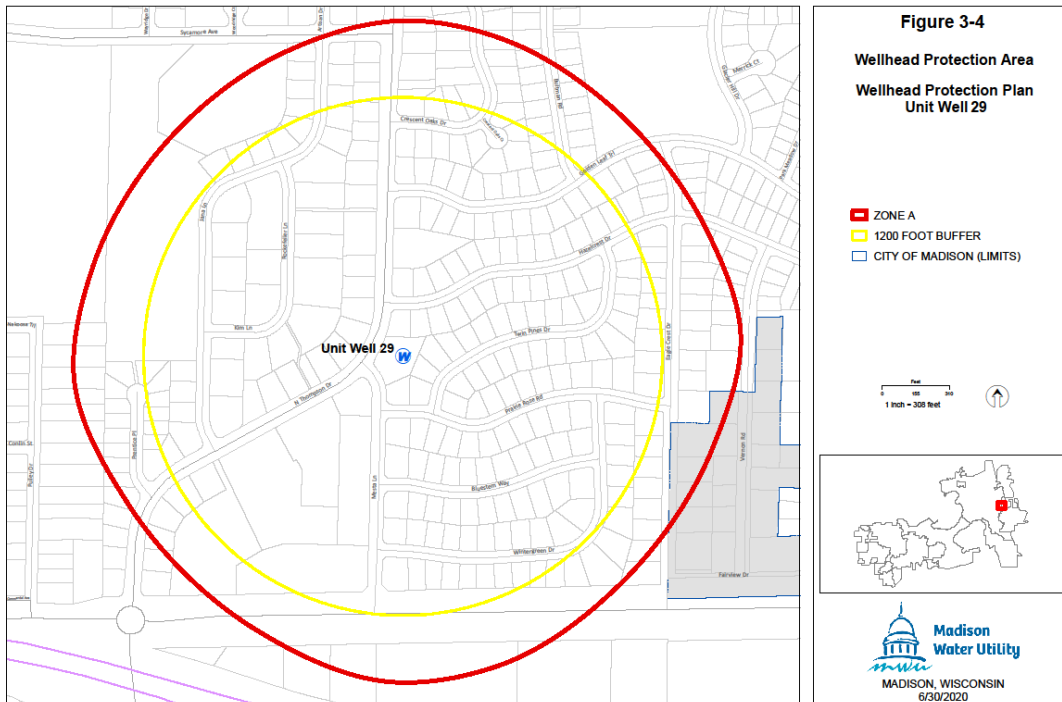
The location of Well No. 29 and the surrounding Zone A and Zone B are shown in Sec. 28.102(26)(a).

(a) Map of Wellhead Protection District No. 29.”

**WELL NO. 29 - CURRENT**



**WELL NO. 29 - NEW**

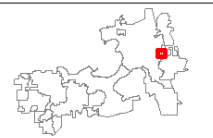


**Figure 3-4**

**Wellhead Protection Area  
Wellhead Protection Plan  
Unit Well 29**

- ZONE A
- 1200 FOOT BUFFER
- CITY OF MADISON (LIMITS)

1 inch = 300 feet



**Madison Water Utility**  
MADISON, WISCONSIN  
6/30/2020

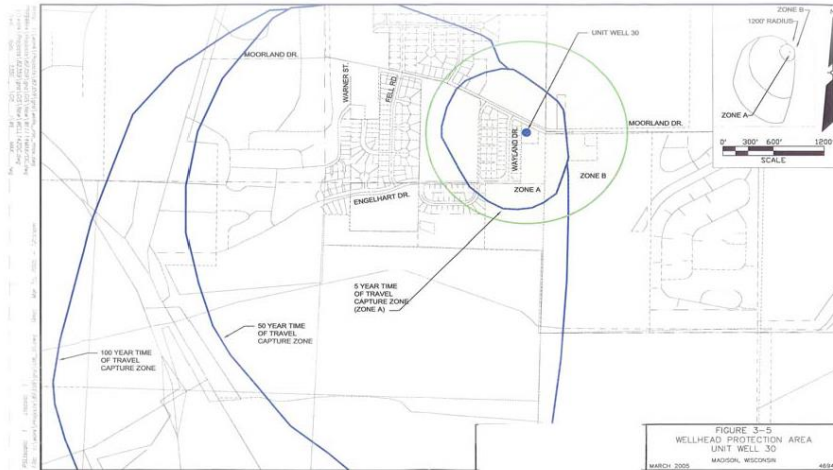
22. Subdivision (a) entitled “Map of Wellhead Protection District No. 30” of Subsection (27) entitled “Wellhead Protection District No. 30” of Section 28.102 entitled “Wellhead Protection Districts” of the Madison General Ordinances is amended to read as follows:

“(27) Wellhead Protection District No. 30.

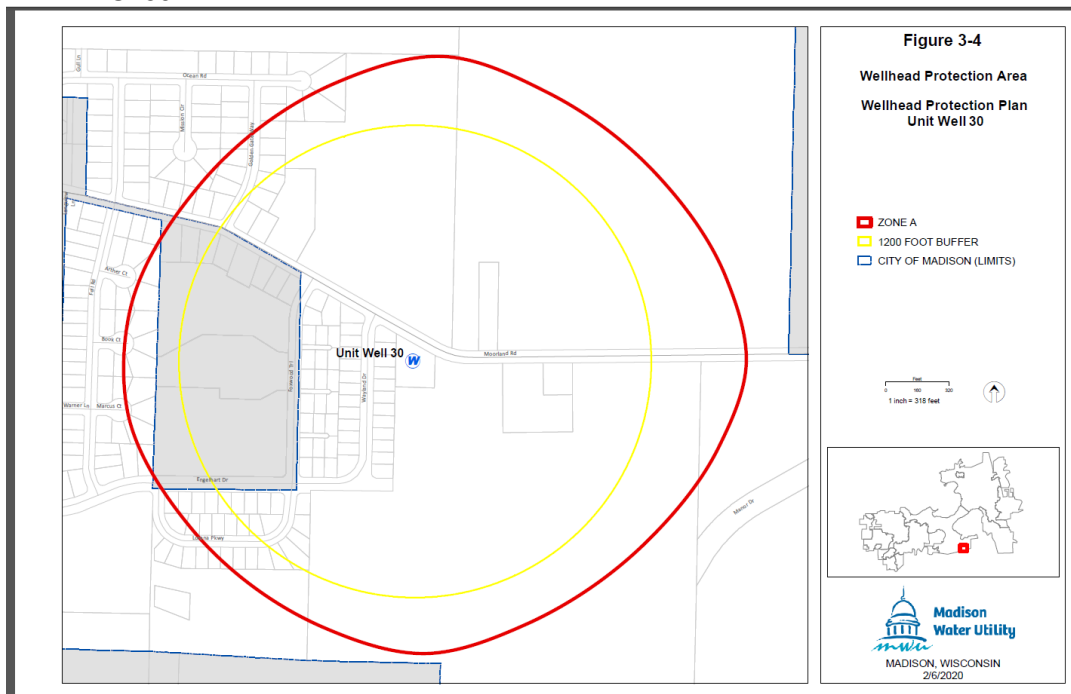
The location of Well No. 30 and the surrounding Zone A and Zone B are shown in Sec. 28.102(27)(a).

(a) Map of Wellhead Protection District No. 30.

**WELL NO. 30 - CURRENT**



**WELL NO. 30 - NEW**



23. Subsection (9) entitled “Wellhead Protection District No. 10” of Section 28.102 entitled “Wellhead Protection Districts” of the Madison General Ordinances is repealed:

“(9) ~~Wellhead Protection District No. 10.~~

The location of Well No. 10 and the surrounding Zone A and Zone B are shown in Sec. 28.102(9)(a).

~~(a) Map of Wellhead Protection District No. 10.”~~  
(Well has been abandoned. Save section number for future use.)

**REPEALED MAP - WELL NO. 10 (ABANDONED)**



24. Subsection (20) entitled “Wellhead Protection District No. 23” of Section 28.102 entitled “Wellhead Protection Districts” of the Madison General Ordinances is repealed:

~~“(20) Wellhead Protection District No. 23.~~  
~~The location of Well No. 23 and the surrounding Zone A and Zone B are shown in Sec. 28.102(20)(a).~~  
~~(a) Map of Wellhead Protection District No. 23.”~~  
(Well has been abandoned. Save section number for future use.)

**REPEALED MAP - WELL NO. 23 (ABANDONED)**

