



DOUBLETREE by Hilton™

4402 East Washington Avenue

Madison, WI

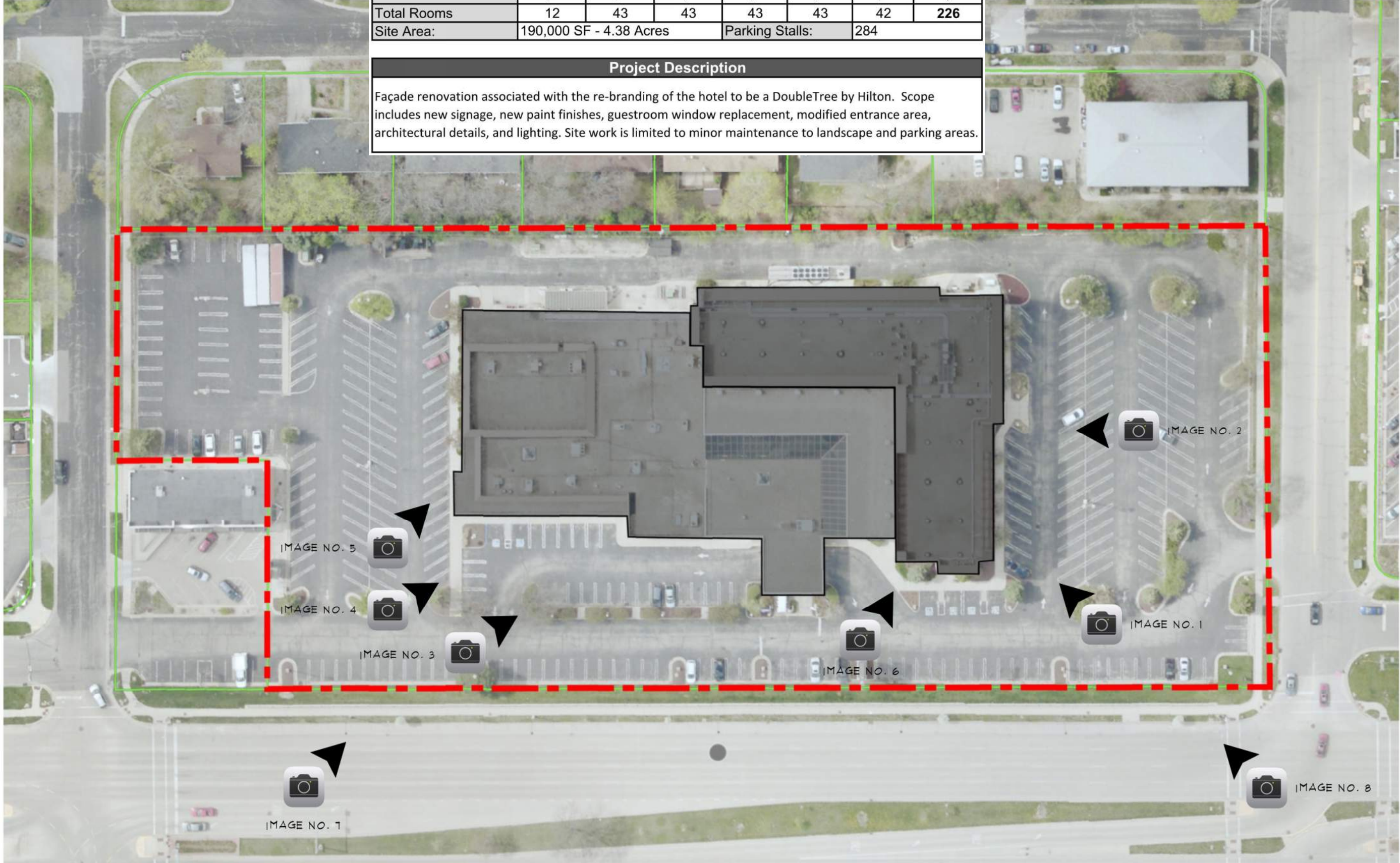
Urban Design Commission Initial/Final Approval Application

05-27-2020

Project Data							
Floor	1st	2nd	3rd	4th	5th	6th	Total
Hotel Area	53,140	19,862	19,862	19,862	19,862	19,862	152,450
Total Rooms	12	43	43	43	43	42	226
Site Area:	190,000 SF - 4.38 Acres			Parking Stalls:		284	

Project Description

Façade renovation associated with the re-branding of the hotel to be a DoubleTree by Hilton. Scope includes new signage, new paint finishes, guestroom window replacement, modified entrance area, architectural details, and lighting. Site work is limited to minor maintenance to landscape and parking areas.





4402 East Washing ton Avenue – Exterior No. 8



4402 East Washing ton Avenue – Exterior No. 7



4402 East Washing ton Avenue – Exterior No. 6



4402 East Washing ton Avenue – Exterior No. 5



4402 East Washing ton Avenue – Exterior No. 4



4402 East Washing ton Avenue – Exterior No. 3



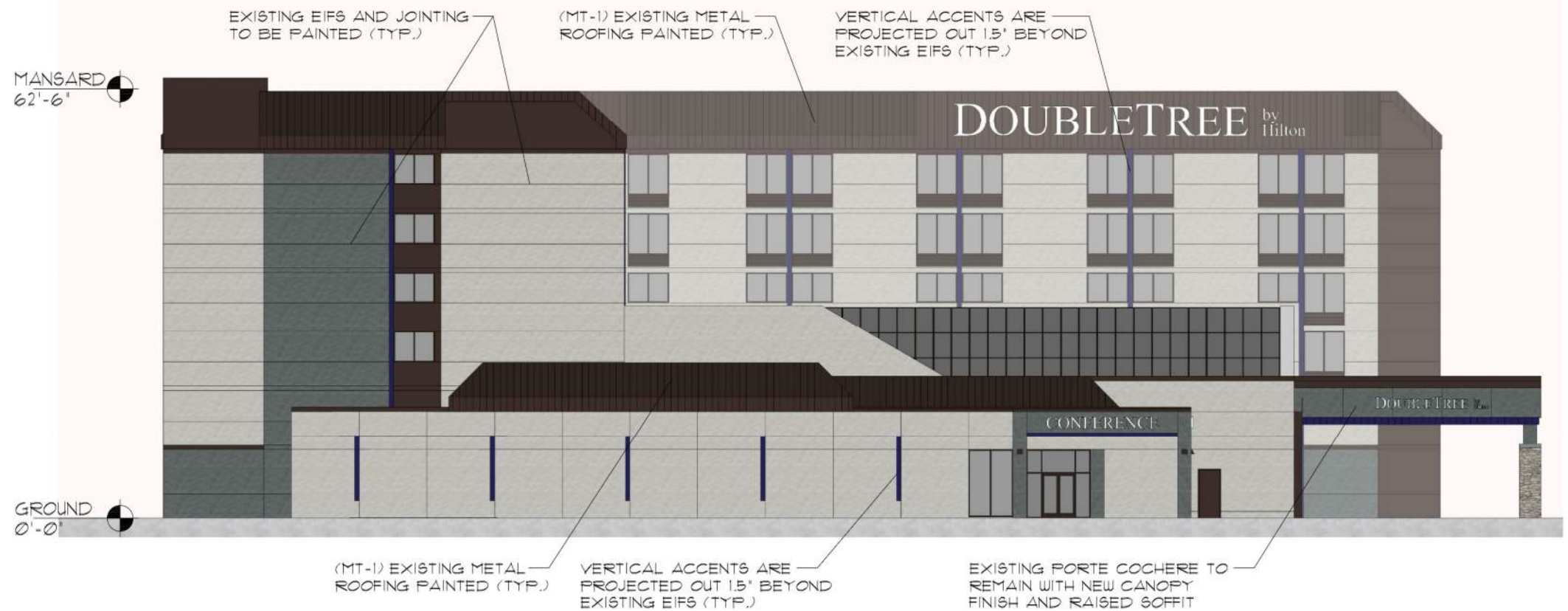
4402 East Washing ton Avenue – Exterior No. 2



4402 East Washing ton Avenue – Exterior No. 1







② SOUTHWEST ELEVATION



① NORTHEAST ELEVATION

MATERIAL DESCRIPTION	
	EIFS-01: EFS-1 COLOR: SW2848 - ROYCROFT PEWTER
	EIFS-02: EFS-2 COLOR: SW0055 - LIGHT FRENCH GRAY
	EIFS-03: EFS-3 COLOR: AKZO NOBEL SIGN 61448 BLUE
	STONE-01: ST-1 STONE TO MATCH EXISTING
	METAL-01: MT-1 COLOR: DARK BRONZE
	WINDOW: CLEAR GLASS W/ BRONZE FRAME

