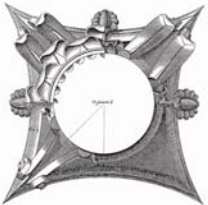


Core Team Kick-Off Meeting



ISTHMUS
ARCHITECTURE, INC.



Conceptual Schematic Design Study

Madison Municipal Building

March 14, 2013

A/E Team – Key Personnel

Laura Davis, AIA, Principal in Charge *Isthmus Architecture*
Peter Rott, AIA, Project Manager

Ursula Twombly, AIA, LEED AP, Planner *Continuum Architects*
Daniel Beyer, AIA, LEED AP, Planner
Vaishali Wagh, RA, LEED AP, Project Architect

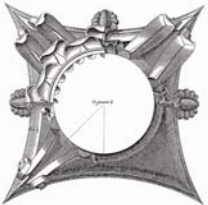
Kris Cotharn, PE, LEED AP, Senior Engineer *KJWW Engineers*
Abby Pertzborn, PE, Structural Engineer
Mike McCarty, PE, Mechanical Engineer
Corey Sanders, EI, Electrical Engineer
Marty Witt, RCDD, PSNP, Technology Designer

Peter Fortlage, PE, Civil Engineering *Burse Engineering*

Joe Trainor, Cost Estimator *Joe Daniels Construction Co.*



ISTHMUS
ARCHITECTURE, INC.



City Core Team

MMB Administration Team

Jeanne Hoffman – Engineering

Jim Whitney – Engineering

Amy Scanlon – Planning

MEP Team

Kay Schindel – Engineering

Randy Harrison – Engineering

Paul Stauffer – Engineering

Envelope and Roof Team

Paul Stauffer – Engineering

Kay Schindel – Engineering

Historic Preservation Team

Amy Scanlon – Planning

Bill Fruhling – Planning

Maintenance Team

Lori Janusz – Engineering

Kathy Cryan – Engineering

Randy Harrison – Engineering

Jake Jacoboski – Engineering



ISTHMUS
ARCHITECTURE, INC.



City Core Team

MMB Space Planning and Conceptual Team

Amy Scanlon - Planning

David Dryer – TE/PU

Scott Langer – TE/PU

Tom Woznick – TE/PU

Brad Clark – IT

Rich Beadles – IT

George Hank – BI

Tresa Martinez – HR

Bill Fruhling – Planning

Jim O’Keefe – OCS/CDBG

Liz Krueger – Zoning

Augie Olvera – CDA

Don Marx – ED/RE

Anne Monks – Mayors Office

Jeanne Hoffman – Engineering

Jim Whitney – Engineering

Rob Phillips - Engineering



ISTHMUS
ARCHITECTURE, INC.



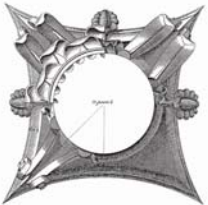
Conceptual Schematic Design Study – Project Goals

The study will research, study, analyze and present options for the following:

1. Respect for this National and State Historic Building and Local Landmark
All recommendations will follow National Park Service Guidelines for Rehabilitation and Renovation and the Madison Landmarks Ordinance
2. A functioning office building
HVAC, Exterior Plumbing, Fire Protection, Electrical, Lighting, Data, Voice and A/V
3. Energy efficiency
4. Functional work environment
Through consultation with City staff, update space needs program
5. Optimize sustainability where practicable
6. Be prepared for design discussions with Judge Doyle Square Redevelopment Team

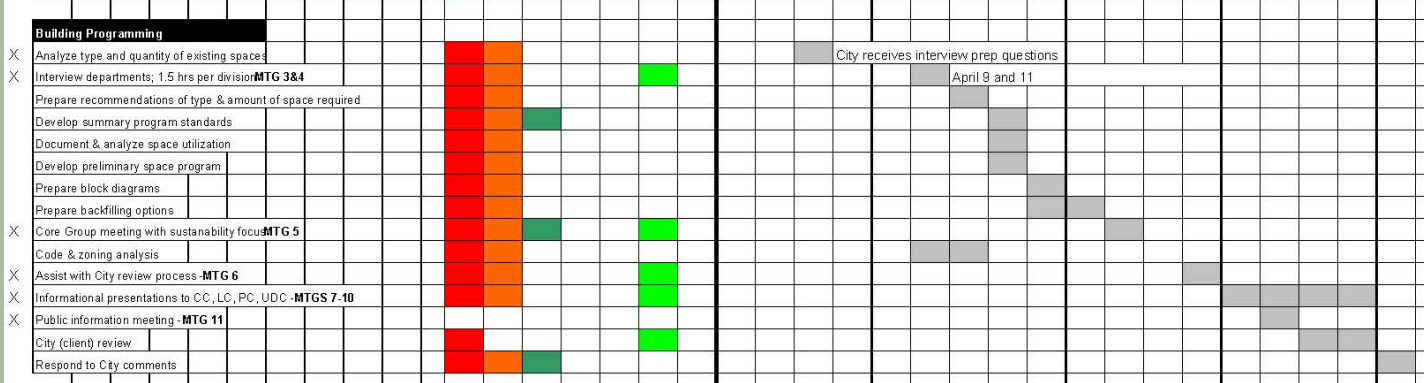


ISTHMUS
ARCHITECTURE, INC.



Building Programming

Tasks



Analyze Spaces

• Team Members: A/E Team

Interview Departments

• Team Members: Continuum and City Core Team

Core Group Update Meeting

• Team Members: A/E Team and City Core Team

City Review Process

• Team Members: A/E Team and City Administration Team

Informational Meetings

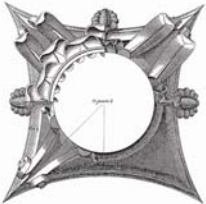
Team Members: A/E Team and City Administration Team

Public Information Meeting

Team Members: A/E Team and City Administrative Team



ISTHMUS ARCHITECTURE, INC.



Approach



ISTHMUS
ARCHITECTURE, INC.



Questions and Answers