

GENERAL SHEET NOTES	
A.	SEE DETAIL SHEETS FOR TELECOM WIRING INFORMATION.
SHEET KEYNOTES	
5	CONCRETE HOUSEKEEPING PAD, PROVIDE 3'-12" HIGH WITH MINIMUM 4" OVERLAP ON FRONT AND SIDES.



1010 East Washington Avenue,  
Suite 202  
Madison, WI 53703  
608 / 242 1550

www.graef-usa.com

CONSULTANTS:

CLIENT:

Community Development Authority of  
the City of Madison



**CDA**

Madison Municipal Building  
215 Martin Luther King Jr Blvd  
Suite 161  
Madison, WI 53703

PROJECT TITLE:

PHASE 1 VILLAGE ON PARK  
PARKING STRUCTURE AND  
GROCERY ALTERATION WORK

808 HUGHES PLACE  
MADISON, WI 53713

ISSUE:

11/30/2023 BID DOCUMENTS

**CAMERAS 35/36**  
**3/17/26**

PROJECT INFORMATION:

PROJECT NUMBER: 20225013.00  
DATE: 11/30/2023  
DRAWN BY: GB  
CHECKED BY: RJ  
APPROVED BY: RJ  
SCALE: AS NOTED

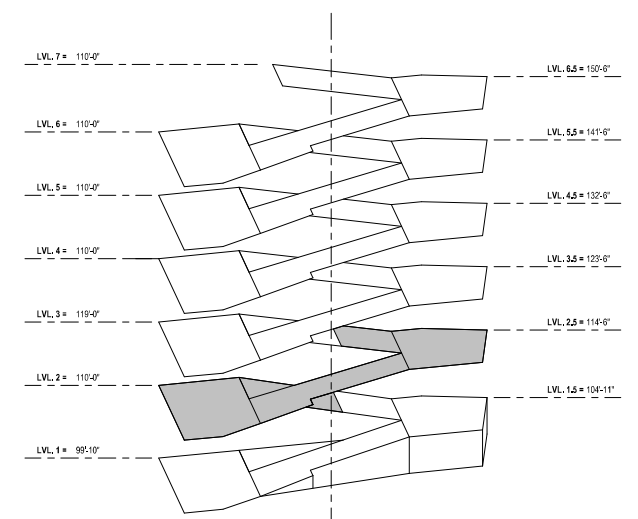
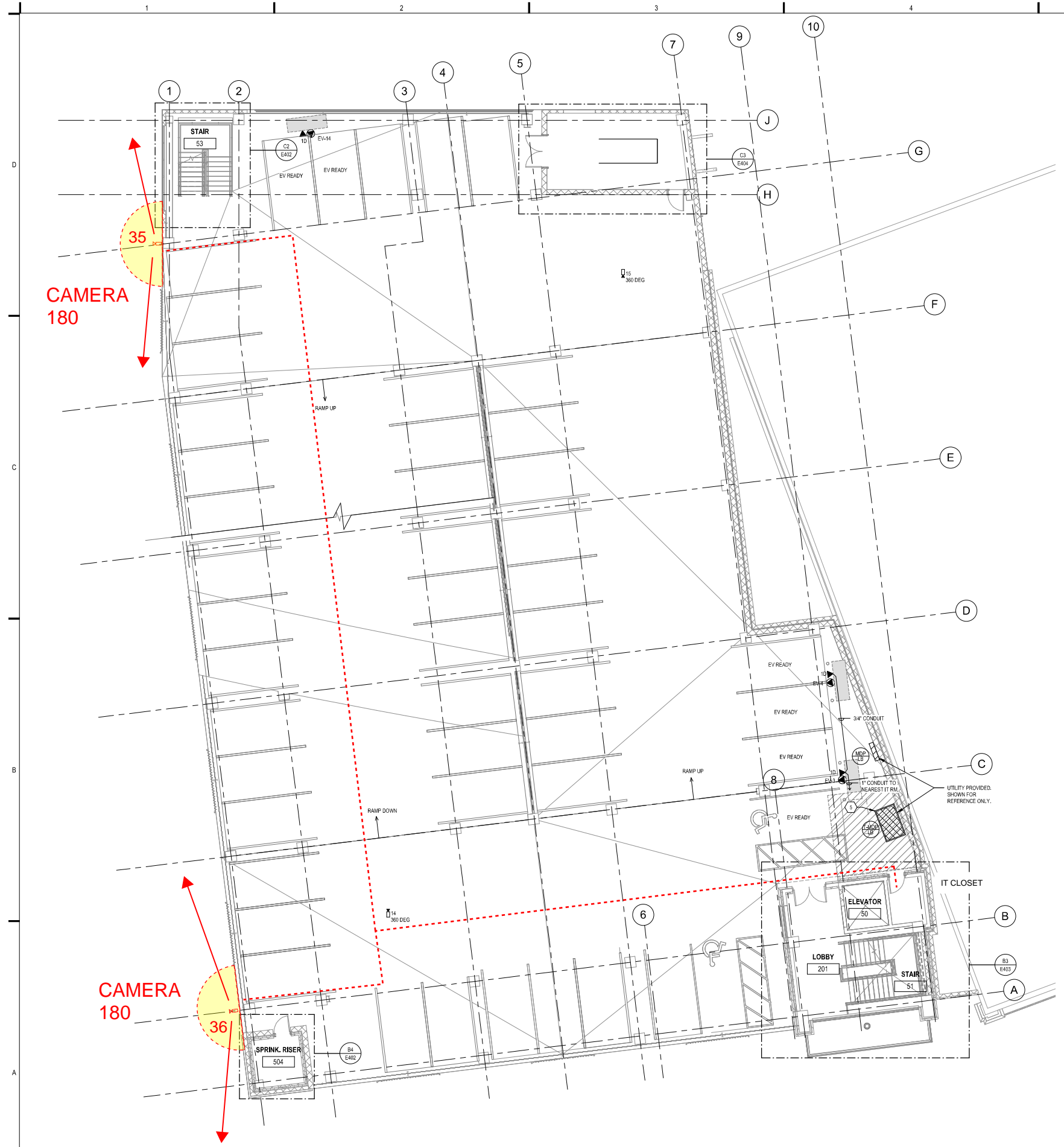
SHEET TITLE:

LEVEL TWO PLAN - POWER &  
SYSTEMS

SHEET NUMBER:

**E122**

**EXHIBIT 'C'**  
Page 1 of 1



**A1 LEVEL TWO PLAN - POWER & SYSTEM**  
1/8" = 1'-0"

**LEVEL TWO KEY PLAN**  
NTS

Autodesk Docs://20225013.00 - Village on Park Garage/2022-5013-E22.rvt  
11/29/2023 7:04:49 AM