



Potter Lawson



Consultants:

Notes:

PRELIMINARY
NOT FOR CONSTRUCTION

Date	Issued/Revisions	Symbol
03/07/2012	UDCS 01111	

UNIVERSITY CROSSING
BUILDING #4
KRUPP GENERAL CONTRACTORS

725 UNIVERSITY ROW,
MADISON, WI.

BUILDING
PERSPECTIVES

Project No. 2011.00.02
Sheet No. PL1

A211

UPL 3-7-12 No. 1 PASS076

2/6/2012 4:45:19 PM

© 2012 Potter Lawson Architects



EAST ELEVATION



EAST RESIDENTIAL ENTRY



PARKING ENTRY FROM BUILDING FOUR



SOUTHEAST CORNER VIEW



RESIDENTIAL STREET VIEW

Potter Lawson

KRUPP
GENERAL CONTRACTORS, LLC

Consultants

Notes

PRELIMINARY
NOT FOR CONSTRUCTION

Date	Issuance/Revisions	Symbol
02-15-12	UCC SUBMITTAL	

**UNIVERSITY CROSSING
BUILDING #6
(APARTMENTS AND
PARKING STRUCTURE)**
UNIVERSITY CROSSING, LLC
725 UNIVERSITY ROW
MADISON, WISCONSIN

**BUILDING
PERSPECTIVES**

01 Project Number
2011.06.04
02 Date
PLJ

03 Drawing No.
A211



NORTHWEST CORNER



RETAIL STREET VIEW



WEST RESIDENTIAL ENTRY



SOUTHWEST CORNER



GREEN ROOF VIEW

Potter Lawson

KRUPP
GENERAL CONTRACTORS, LLC

Consultants:

Notes:

PRELIMINARY
NOT FOR CONSTRUCTION

03/15/12	UDC SUBMITTAL	
Date	Revision/Description	Symbol

**UNIVERSITY CROSSING
BUILDING #6
(APARTMENTS AND
PARKING STRUCTURE)**

UNIVERSITY CROSSING, LLC

725 UNIVERSITY ROW
MADISON, WISCONSIN

Drawing Title

**BUILDING
PERSPECTIVES**

Plot Project Name
2013.06.04
Date To
PLT

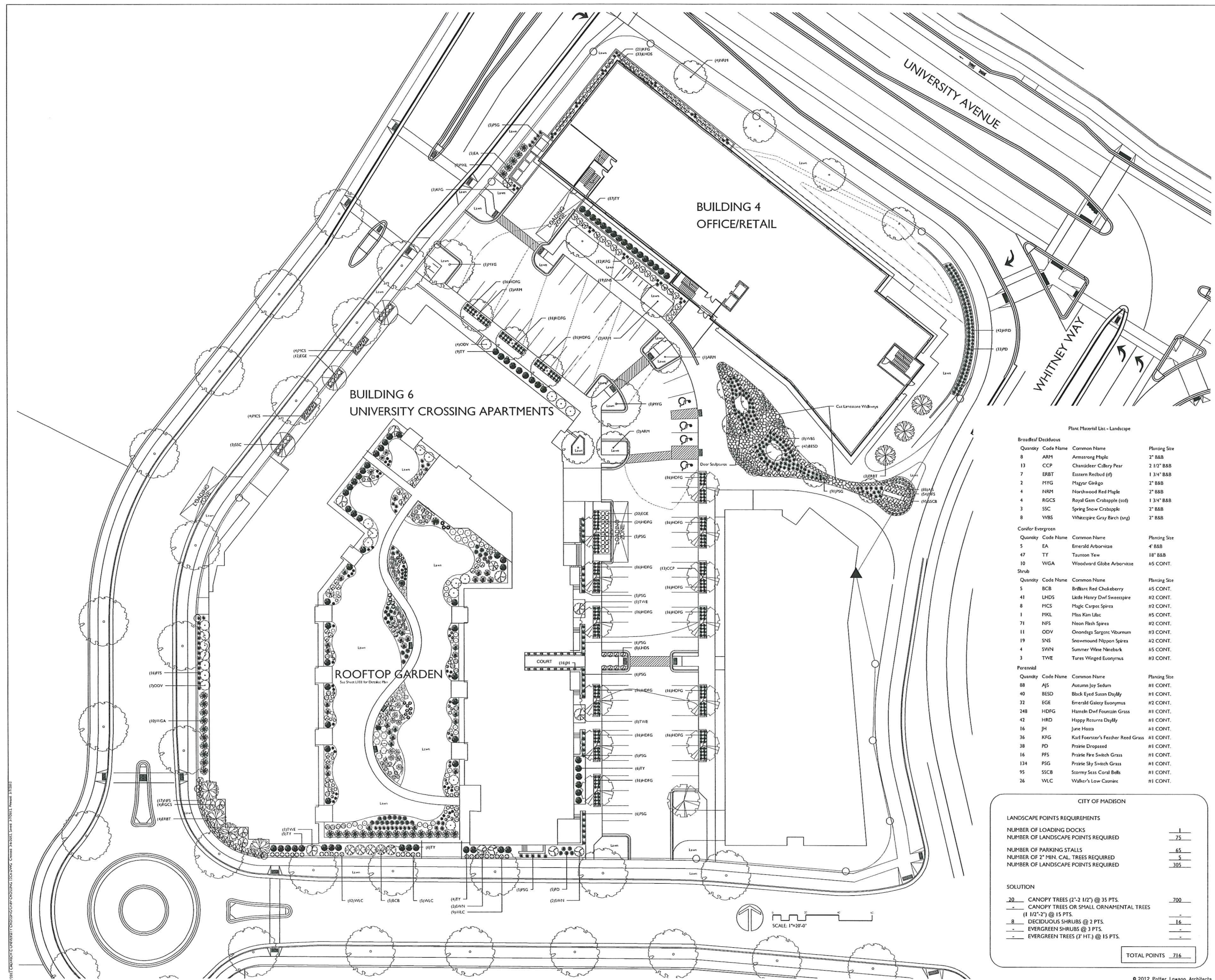
Drawing No.

A212

Consultant:

the office company
LANDSCAPE ARCHITECTS
LANDSCAPE CONTRACTORS
2830 PARKER STREET
P.O. BOX 620330
MIDDLETON, WI 53562-0330
TEL (608) 836-7041
FAX (608) 831-6266

Notes:



Plant Material List - Landscape

Quantity	Code Name	Common Name	Planting Size
8	ARM	Armstrong Maple	2' B&B
13	CCP	Chanticleer Callery Pear	2 1/2' B&B
7	ERBT	Eastern Redbud (fl)	1 3/4' B&B
2	MYG	Magyar Ginkgo	2' B&B
4	NRM	Northwood Red Maple	2' B&B
4	RGCS	Royal Gem Crabapple (std)	1 3/4' B&B
3	SSC	Spring Snow Crabapple	2' B&B
8	WBS	Whitespire Gray Birch (ung)	2' B&B
Conifer Evergreen			
Quantity	Code Name	Common Name	Planting Size
5	EA	Emerald Arborvitae	4' B&B
47	TY	Taunton Yew	18' B&B
10	WGA	Woodward Globe Arborvitae	#5 CONT.
Shrub			
Quantity	Code Name	Common Name	Planting Size
5	BCB	Brilliant Red Chokeberry	#5 CONT.
41	LHDS	Little Henry Dwarf Sweetspire	#2 CONT.
8	MCS	Magic Carpet Spirea	#2 CONT.
1	MKL	Miss Kim Lilac	#5 CONT.
71	NFS	Neon Flash Spirea	#2 CONT.
11	ODV	Onondaga Sargent Viburnum	#3 CONT.
19	SNS	Snowmound Nippon Spirea	#2 CONT.
4	SWN	Summer White Nanebark	#5 CONT.
3	TYVE	Tures Winged Euonymus	#3 CONT.
Perennial			
Quantity	Code Name	Common Name	Planting Size
88	AJS	Autumn Joy Sedum	#1 CONT.
40	BESD	Black Eyed Susan Daylily	#1 CONT.
32	EGE	Emerald Gaiety Euonymus	#2 CONT.
248	HDFG	Hammeln Dwarf Fountain Grass	#1 CONT.
42	HRD	Happy Returns Daylily	#1 CONT.
16	JH	June Hosta	#1 CONT.
36	KFG	Karl Foerster's Feather Reed Grass	#1 CONT.
38	PD	Prairie Dropseed	#1 CONT.
16	PPS	Prairie Fire Switch Grass	#1 CONT.
134	PSG	Prairie Sky Switch Grass	#1 CONT.
95	SSCB	Stormy Seas Coral Bells	#1 CONT.
26	WLC	Walker's Low Ceanothus	#1 CONT.

CITY OF MADISON

LANDSCAPE POINTS REQUIREMENTS	
NUMBER OF LOADING DOCKS	1
NUMBER OF LANDSCAPE POINTS REQUIRED	75
NUMBER OF PARKING STALLS	65
NUMBER OF 2" MIN. CAL. TREES REQUIRED	5
NUMBER OF LANDSCAPE POINTS REQUIRED	395
SOLUTION	
20 CANOPY TREES (2'-2 1/2') @ 35 PTS.	700
5 CANOPY TREES OR SMALL ORNAMENTAL TREES (1 1/2'-2') @ 15 PTS.	75
8 DECIDUOUS SHRUBS @ 2 PTS.	16
5 EVERGREEN SHRUBS @ 3 PTS.	15
5 EVERGREEN TREES (2' HT.) @ 15 PTS.	75
TOTAL POINTS	716

UNIVERSITY CROSSING
BUILDINGS #4 AND #6
KRUPP GENERAL CONTRACTORS

725 UNIVERSITY ROW
MADISON, WISCONSIN

LANDSCAPE PLAN

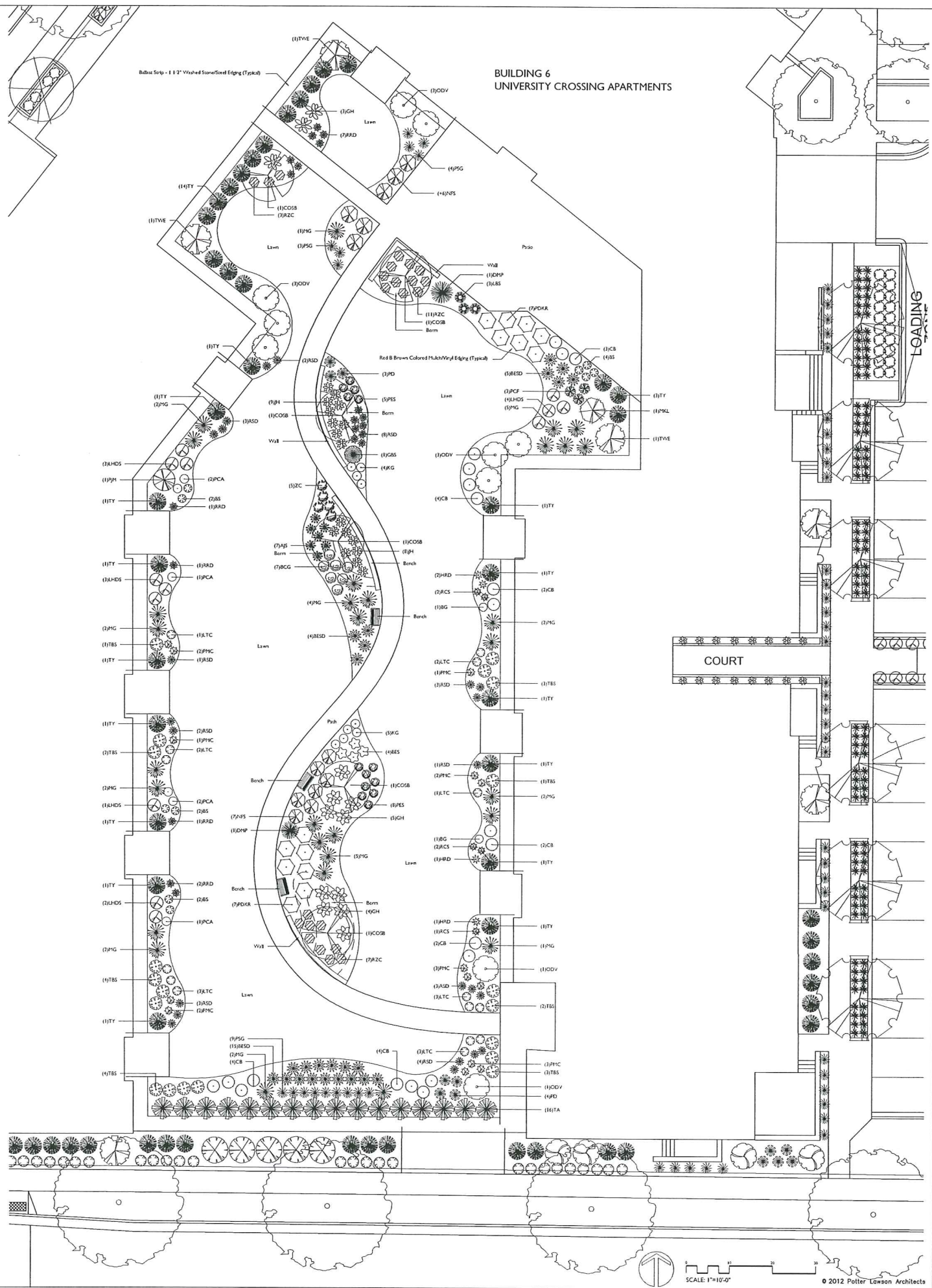
Drawn By: L100

Broadleaf Deciduous			
Quantity	Code Name	Common Name	Planting Size
6	COSB	Cole Serviceberry (5)	3" B&B

Conifer Evergreen			
Quantity	Code Name	Common Name	Planting Size
2	DMP	Dwarf Flugo Pine	18" POT
1	GBS	Globe Blue Spruce	24" B&B
32	TY	Taunton Yew	18" B&B
16	TA	Techny/mission Arborvitae	5" B&B

Perennial			
Quantity	Code Name	Common Name	Planting Size
7	AJS	Autumn Joy Sedum	#2 CONT.
24	BESD	Black Eyed Susan Daylily	#1 CONT.
7	BCG	Bloody Cranesbill Geranium	#1 CONT.
10	BS	Brilliant Sedum	#1 CONT.
2	BG	Burgundy Gallardia	#1 CONT.
4	BES	Goldschm Black-eyed Susan	#1 CONT.
13	GH	Guacamole Hosta	#1 CONT.
4	HRD	Happy Returns Daylily	#1 CONT.
17	JH	June Hosta	#1 CONT.
9	KG	Kobold Gayflesher	#1 CONT.
3	LBS	Little Bluestem	#1 CONT.
15	LTC	Little Titch Camarin	#1 CONT.
30	MG	Maiden Grass	#1 CONT.
14	PMC	Pixie Meadowbrite Coneflower	#1 CONT.
7	PD	Prairie Dropseed	#1 CONT.
16	PSG	Prairie Sky Switch Grass	#1 CONT.
6	PCA	Purple Candles Astilbe	#1 CONT.
3	PCF	Purple Coneflower	#1 CONT.
13	FES	Purple Emperor Sedum	#1 CONT.
12	RRD	Rosy Returns Daylily	#1 CONT.
5	RCS	Royal Candies Speedwell	#1 CONT.
23	RZC	Rozanne Cranesbill	#1 CONT.
30	RSD	Ruby Stella Daylily	#1 CONT.
5	ZC	Zagreb Coreopsis	#1 CONT.

Shrub			
Quantity	Code Name	Common Name	Planting Size
21	CB	Cabernet Barberry	#2 CONT.
13	LHDS	Little Henry Dwarf Sweetspire	#2 CONT.
1	MKL	Miss Kim Lilac	#5 CONT.
13	NFS	Neon Flash Spirea	#2 CONT.
10	ODV	Onondaga Sargent Viburnum	#3 CONT.
14	PDKR	Pink Double Knock Out Rose	#2 CONT.
1	PJM	PJM Rhododendron	#3 CONT.
20	TBS	Tor Birchleaf Spirea	#2 CONT.
3	TVE	Tures Winged Euonymus	#3 CONT.



Potter Lawson

KRUPP
GENERAL CONTRACTORS, LLC

Consultant:

the bruce company
LANDSCAPE ARCHITECTS
LANDSCAPE CONTRACTORS
2830 FARMINGTON STREET
P.O. BOX 420330
MIDDLETON, WI 53562-0330
TEL: (608) 836-7041
FAX: (608) 831-6266

Notes:

Date	Issuance/Revisions	Symbol
02/08/2012	PUD / SP SUBMITTAL	

**UNIVERSITY CROSSING
BUILDINGS #4 AND #6**
KRUPP GENERAL CONTRACTORS

725 UNIVERSITY ROW
MADISON, WISCONSIN

Drawing Title:

LANDSCAPE PLAN

PLI Project Number:

Drawing No.

L101

Drawn By:

SCALE: 1"=10'-0"
© 2012 Potter Lawson Architects

10/11/12 10:00 AM C:\PROJECTS\UNIVERSITY CROSSING\UNIVERSITY CROSSING - BUILDINGS #4 AND #6\LANDSCAPE PLAN.dwg User: PLOTTING