

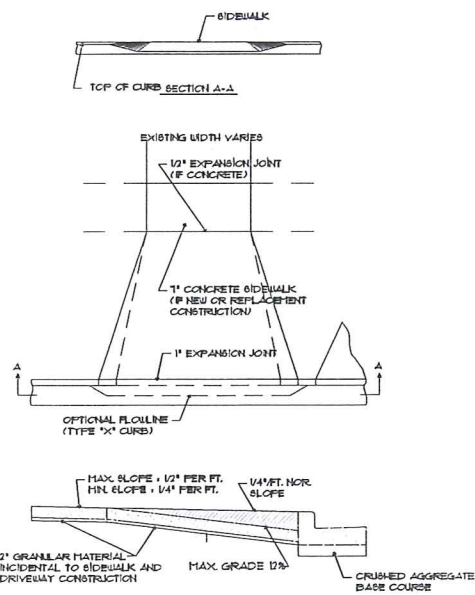
LEGEND:

○	PROPERTY CORNER
—	PROPERTY LINE
—S—N	SANITARY SEWER
—S—M	STORM SEWER
—W	WATER MAIN
⊕	FIRE HYDRANT
⊕	UTILITY POLE
⊕	UTILITY POLE W/ LIGHT
○	MANHOLE
○	WATER VALVE
—	CURB INLET
□	STORM SEWER ACCESS COVER
⊕	SPOT ELEVATION
⊕	MONITORING WELL
▨	EXISTING BUILDING

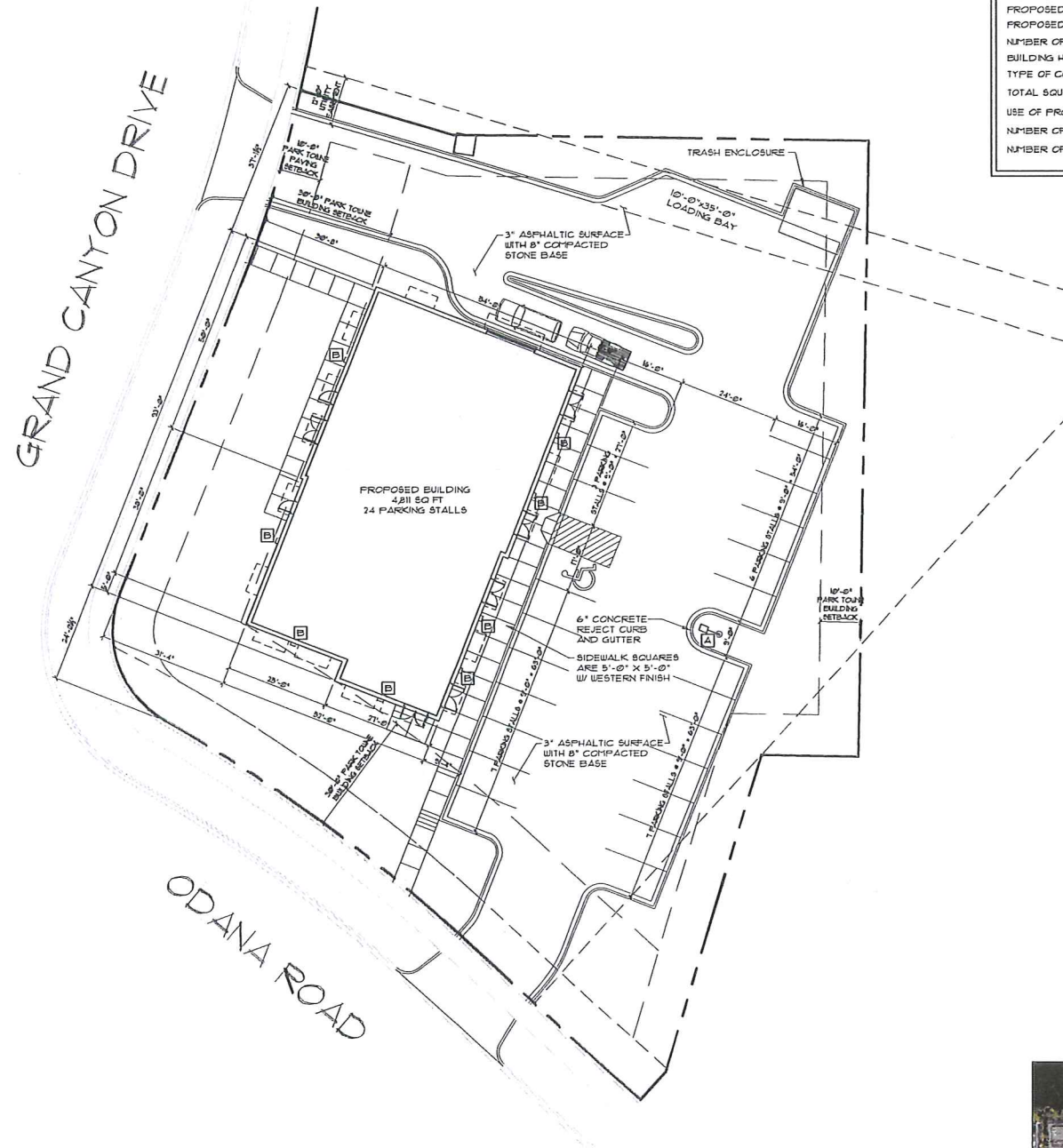
TO OBTAIN LOCATIONS OF PARTICIPANTS UNDERGROUND FACILITIES BEFORE YOU DIG IN WISCONSIN



CALL DIGGERS HOTLINE
1-800-242-8511
TOLL FREE
WIS STATUTE 187.0115(1914)
REQUIRES MIN. 3 WORK DAYS
NOTICE BEFORE YOU EXCAVATE



2 COMMERCIAL DRIVEWAY DETAIL
C-II SCALE: N.T.S.



1 SITE PLAN
C-II SCALE: 1/16" = 1'-0"

PARKING LOT PLAN SITE INFORMATION BLOCK

SITE ACREAGE (TOTAL)	30232 SQ FT • 0.69 ACRES
PROPOSED IMPERVIOUS SURFACE	-- SQ FT
PROPOSED PARKING AND PAVEMENT	-- SQ FT
NUMBER OF BUILDING STORIES (ABOVE GRADE)	1
BUILDING HEIGHT	20'-4" ABOVE GRADE
TYPE OF CONSTRUCTION (NEW STRUCTURES OR ADDITIONS)	5B, NON-SPRINKLED
TOTAL SQUARE FOOTAGE OF BUILDING	4,811 SQ FT
USE OF PROPERTY	B
NUMBER OF PARKING STALLS	24
NUMBER OF LANDSCAPE FONTS	-

SITE INFORMATION

SITE SIZE	30232 SQ FT
BLDG AREA (FOOTPRINT)	4,811 SQ FT
FLOOR AREA RATIO	15.5%
PARKING AND WALKS	-- SQ FT
IMPERVIOUS SURFACE AREA	-- SQ FT
IMPERVIOUS SURFACE RATIO	--
PARKING RATIO	1193 SQ FT
ZONING	CC

GENERAL NOTES:

- ALL PAINT STRIPPING SHALL BE 4" WIDE, WHITE.
- H.C. CURB CUTS AND RAMPS PER ADA SEC. AT MAX. SLOPE TO BE 1/2" MIN. WIDTH TO BE 36", TRUNCATED DOMES ARE TO BE INSTALLED ON EACH SIDE, DIAMOND MESH SURFACE FULL WIDTH AND DEPTH OF RAMP.
- ALL DIMENSIONS ARE FROM FACE OF CONCRETE WALL, FACE OF CURB OR CENTER OF PROPERTY LINE.
- BITUMINOUS PAVING IS 3" SURFACE COURSE ON 8" COMPACTED STONE BASE (APPROXIMATE ASPHALTIC AREA: 10,203 SQ FT).
- ALL EXTERIOR CONCRETE SIDEWALKS TO BE 6 BAG MIX WITH WESTERN FINISH 5" THICK W/ W/IF REINFORCING ON 6" COMPACTED FILL. (AREA OF SIDEWALKS: 1110 SQ FT)
- WATER SERVICE MATERIAL SHALL BE 6" D.I.
- SEWER AND WATER CONSTRUCTION SHALL BE COMPLETED IN ACCORDANCE WITH THE CITY OF MADISON STANDARD SPECIFICATION FOR PUBLIC WORKS CONSTRUCTION.
- DRIVEWAY APRON CONSTRUCTION WITHIN THE PUBLIC RIGHT OF WAY SHALL BE CONSTRUCTED IN ACCORDANCE WITH CITY OF MADISON STANDARDS.
- EXISTING WATERMAIN VALVES SHALL BE MARKED AND PROTECTED FOR DURATION OF CONSTRUCTION.
- SLOPES GREATER THAN 3:1 SHALL BE LINED WITH EROSION MATING.
- TRACKED MATERIAL SHALL BE COLLECTED BY THE GENERAL CONTRACTOR AT THE END OF EACH WORKING DAY OR AS REQUIRED BY THE CITY OF MADISON.
- ACCESSIBLE SIGNAGE AT THE HEAD OF STALLS SHALL BE A MINIMUM OF 60 INCHES BETWEEN THE BOTTOM OF THE SIGN AND THE GROUND.
- INSTALL "STOP" SIGN AT A HEIGHT OF 7'-0" ABOVE GRADE AT DRIVEWAY APPROACH ON OWNER'S PROPERTY.

LIGHT FIXTURE KEY

- A** STREETWORKS, RIDGEVIEW LED SINGLE HEAD PARKING LOT LIGHT FIXTURE MODEL # RDS-B01-LED-E-U-RUQ-BZ 5'-0" X 5' 5" SQ STEEL POLE ON 3'-0" CONC. BASE (18'-0" FROM GRADE)
- B** COOPER LIGHTING, MCGRAW-HILL/EDISON IMPACT ELITE SHALL-LED CATALOG #ST-B01-LED-EI-G0U-BZ-1LG MOUNTING HEIGHT = 9'-0" ABOVE GRADE
- C** COOPER LIGHTING, MCGRAW-HILL/EDISON IMPACT ELITE SHALL-LED CATALOG #ST-B01-LED-EI-BK3-BZ MOUNTING HEIGHT = 11'-0" ABOVE GRADE



SITE MAP



634 West Main Street
Madison, WI 53703
608-251-1090
FAX 608-251-1092

REV DATE

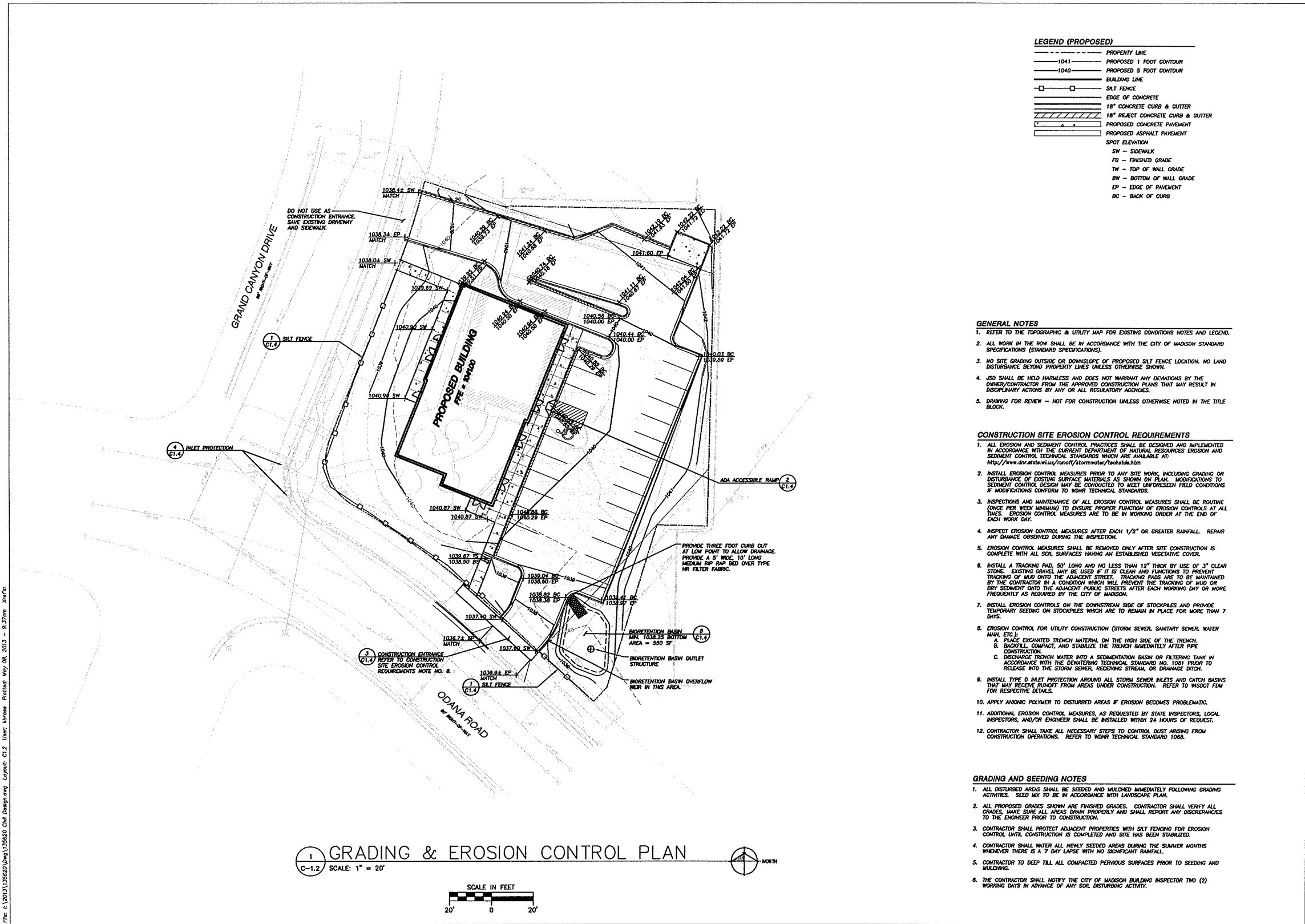
COPYRIGHTED DRAWING
© 2014 TJK Design Build, Inc. ALL RIGHTS RESERVED. NEITHER THIS DOCUMENT NOR THE INFORMATION HEREIN MAY BE REPRODUCED, DISTRIBUTED, USED OR DISCLOSED IN WHOLE OR IN PART, UNLESS EXPRESSLY AUTHORIZED IN WRITING BY TJK DESIGN BUILD, INC.

PROPOSED FACILITY FOR:
MULTI-TENANT COMMERCIAL BUILDING
6698 ODANA ROAD
MADISON, WISCONSIN

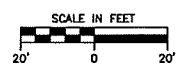
C-1.1

5.7.13

File: I:\2013\15620\DWG\15620 Civil Design.dwg Layout: C1.2 User: karsene PlotDate: May 08, 2013 9:37am Xref: E



1 GRADING & EROSION CONTROL PLAN
 SCALE: 1" = 20'



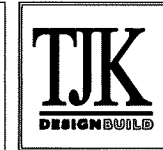
LEGEND (PROPOSED)

---	PROPERTY LINE
---	PROPOSED 1 FOOT CONTOUR
---	PROPOSED 5 FOOT CONTOUR
---	BUILDING LINE
---	SILT FENCE
---	EDGE OF CONCRETE
---	18" CONCRETE CURB & GUTTER
---	18" REJECT CONCRETE CURB & GUTTER
---	PROPOSED CONCRETE PAVEMENT
---	PROPOSED ASPHALT PAVEMENT
---	SPOT ELEVATION
---	SW - SIDEWALK
---	FG - FINISHED GRADE
---	TW - TOP OF WALL GRADE
---	BW - BOTTOM OF WALL GRADE
---	EP - EDGE OF PAVEMENT
---	BC - BACK OF CURB

- GENERAL NOTES**
- REFER TO THE TOPOGRAPHIC & UTILITY MAP FOR EXISTING CONDITIONS NOTES AND LEGEND.
 - ALL WORK IN THE ROW SHALL BE IN ACCORDANCE WITH THE CITY OF MADISON STANDARD SPECIFICATIONS (STANDARD SPECIFICATIONS).
 - NO SITE GRADING OUTSIDE OR DOWNSLOPE OF PROPOSED SILT FENCE LOCATION. NO LAND DISTURBANCE BEYOND PROPERTY LINES UNLESS OTHERWISE SHOWN.
 - JOB SHALL BE HELD HARMLESS AND DOES NOT WARRANT ANY DEVIATIONS BY THE OWNER/CONTRACTOR FROM THE APPROVED CONSTRUCTION PLANS THAT MAY RESULT IN DISCIPLINARY ACTIONS BY ANY OR ALL REGULATORY AGENCIES.
 - DRAWING FOR REVIEW - NOT FOR CONSTRUCTION UNLESS OTHERWISE NOTED IN THE TITLE BLOCK.

- CONSTRUCTION SITE EROSION CONTROL REQUIREMENTS**
- ALL EROSION AND SEDIMENT CONTROL PRACTICES SHALL BE DESIGNED AND IMPLEMENTED IN ACCORDANCE WITH THE CURRENT DEPARTMENT OF NATURAL RESOURCES EROSION AND SEDIMENT CONTROL TECHNICAL STANDARDS WHICH ARE AVAILABLE AT: <http://www.dnr.state.wi.us/nsoff/stormwater/techstds.htm>
 - INSTALL EROSION CONTROL MEASURES PRIOR TO ANY SITE WORK INCLUDING GRADING OR DISTURBANCE OF EXISTING SURFACE MATERIALS AS SHOWN ON PLAN. MODIFICATIONS TO SEDIMENT CONTROL DESIGN MAY BE CONDUCTED TO MEET UNFORESEEN FIELD CONDITIONS IF MODIFICATIONS CONFORM TO WORK TECHNICAL STANDARDS.
 - INSPECTIONS AND MAINTENANCE OF ALL EROSION CONTROL MEASURES SHALL BE ROUTINE (ONCE PER WEEK MINIMUM) TO ENSURE PROPER FUNCTION OF EROSION CONTROLS AT ALL TIMES. EROSION CONTROL MEASURES ARE TO BE IN WORKING ORDER AT THE END OF EACH WORK DAY.
 - INSPECT EROSION CONTROL MEASURES AFTER EACH 1/2" OR GREATER RAINFALL. REPAIR ANY DAMAGE OBSERVED DURING THE INSPECTION.
 - EROSION CONTROL MEASURES SHALL BE REMOVED ONLY AFTER SITE CONSTRUCTION IS COMPLETE WITH ALL SOIL SURFACES HAVING AN ESTABLISHED VEGETATIVE COVER.
 - INSTALL A TRACKING PAD, 50' LONG AND NO LESS THAN 18" THICK BY USE OF 3" CLEAR STONE. EXISTING GRAVEL MAY BE USED IF IT IS CLEAN AND FUNCTIONS TO PREVENT TRACKING OF MUD ONTO THE ADJACENT STREET. TRACKING PADS ARE TO BE MAINTAINED BY THE CONTRACTOR IN A CONDITION WHICH WILL PREVENT THE TRACKING OF MUD OR DRY SEDIMENT ONTO THE ADJACENT PUBLIC STREETS AFTER EACH WORKING DAY OR MORE FREQUENTLY AS REQUIRED BY THE CITY OF MADISON.
 - INSTALL EROSION CONTROLS ON THE DOWNSTREAM SIDE OF STOCKPILES AND PROVIDE TEMPORARY SEEDING ON STOCKPILES WHICH ARE TO REMAIN IN PLACE FOR MORE THAN 7 DAYS.
 - EROSION CONTROL FOR UTILITY CONSTRUCTION (STORM SEWER, SANITARY SEWER, WATER MAIN, ETC.):
 A. PLACE EXCAVATED TRENCH MATERIAL ON THE HIGH SIDE OF THE TRENCH.
 B. BACKFILL, COMPACT, AND STABILIZE THE TRENCH IMMEDIATELY AFTER PIPE CONSTRUCTION.
 C. DISCHARGE TRENCH WATER INTO A SEDIMENTATION BASIN OR FILTERING TANK IN ACCORDANCE WITH THE DETAILED TECHNICAL STANDARD NO. 10B1 PRIOR TO RELEASE INTO THE STORM SEWER, RECEIVING STREAM, OR DRAINAGE DITCH.
 - INSTALL TYPE D INLET PROTECTION AROUND ALL STORM SEWER INLETS AND CATCH BASINS THAT MAY RECEIVE RUNOFF FROM AREAS UNDER CONSTRUCTION. REFER TO MDSOT FDM FOR RESPECTIVE DETAILS.
 - APPLY ANIONIC POLYMER TO DISTURBED AREAS IF EROSION BECOMES PROBLEMATIC.
 - ADDITIONAL EROSION CONTROL MEASURES, AS REQUESTED BY STATE INSPECTORS, LOCAL INSPECTORS, AND/OR ENGINEER SHALL BE INSTALLED WITHIN 24 HOURS OF REQUEST.
 - CONTRACTOR SHALL TAKE ALL NECESSARY STEPS TO CONTROL DUST ARISING FROM CONSTRUCTION OPERATIONS. REFER TO WORK TECHNICAL STANDARD 100A.

- GRADING AND SEEDING NOTES**
- ALL DISTURBED AREAS SHALL BE SEEDING AND MULCHED IMMEDIATELY FOLLOWING GRADING ACTIVITIES. SEED MIX TO BE IN ACCORDANCE WITH LANDSCAPE PLAN.
 - ALL PROPOSED GRADES SHOWN ARE FINISHED GRADES. CONTRACTOR SHALL VERIFY ALL GRADES, MAKE SURE ALL AREAS DRAIN PROPERLY AND SHALL REPORT ANY DISCREPANCIES TO THE ENGINEER PRIOR TO CONSTRUCTION.
 - CONTRACTOR SHALL PROTECT ADJACENT PROPERTIES WITH SILT FENCING FOR EROSION CONTROL UNTIL CONSTRUCTION IS COMPLETED AND SITE HAS BEEN STABILIZED.
 - CONTRACTOR SHALL WATER ALL NEWLY SEEDING AREAS DURING THE SUMMER MONTHS WHENEVER THERE IS A 7 DAY LAPSE WITH NO SIGNIFICANT RAINFALL.
 - CONTRACTOR TO DEEP TILL ALL COMPACTED PAVEMENT SURFACES PRIOR TO SEEDING AND MULCHING.
 - THE CONTRACTOR SHALL NOTIFY THE CITY OF MADISON BUILDING INSPECTOR TWO (2) WORKING DAYS IN ADVANCE OF ANY SOIL DISTURBING ACTIVITY.



634 West Main Street
 Madison, WI 53703
 608-257-1090
 FAX 608-257-1092

REV	DATE

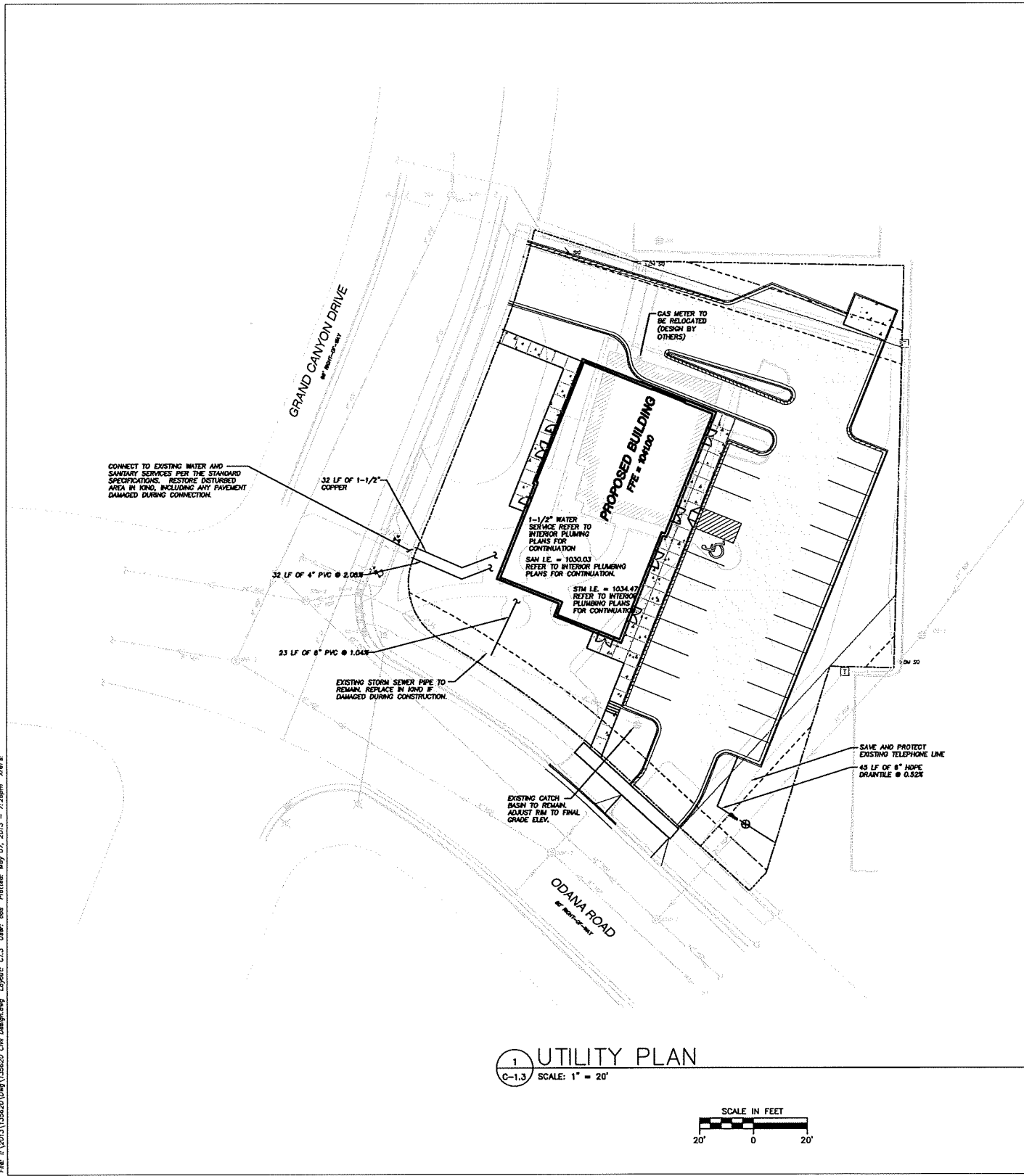
COPYRIGHTED DRAWING
 C. 2011, TJK Design Build, Inc. ALL RIGHTS RESERVED. WITHIN THE DOCUMENT FOR THE INFORMATION WHICH MAY BE REPRODUCED OR TRANSMITTED IN ANY FORM OR BY ANY MEANS, WITHOUT PERMISSION IN WRITING BY TJK DESIGN BUILD, INC.

JSD Professional Services, Inc.
 Equipment - Erosion - Planning
 161 HORIZON DRIVE, SUITE 101
 MADISON, WISCONSIN 53704
 PHONE: (608)846-5000

PROPOSED FACILITY FOR:
MULTI-TENANT COMMERCIAL BUILDING
 6698 ODANA ROAD
 MADISON, WISCONSIN

C-1.2
 4.17.13

File: I:\2013\136520\DWG\136520 Civil Design.dwg, Layout: C-1.3, User: dss, Plotted: May 07, 2013, 7:26pm, 30x42"



NOTE: PROVIDE ELECTRIC SERVICE TO PROPOSED LIGHT POLES (DESIGN BY OTHERS)

LEGEND (PROPOSED)

---	PROPERTY LINE
---	BUILDING LINE
---	SANITARY SEWER
---	WATER MAIN
---	STORM SEWER
---	GAS SERVICE
---	ELECTRIC SERVICE
---	TELEPHONE SERVICE
---	18" CONCRETE CURB & GUTTER
---	PROPOSED CONCRETE PAVEMENT
---	PROPOSED ASPHALT PAVEMENT

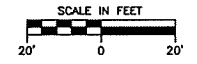
GENERAL NOTES

- REFER TO THE TOPOGRAPHIC AND UTILITY MAP FOR EXISTING CONDITIONS NOTES AND LEGEND.
- ALL WORK IN THE ROW SHALL BE IN ACCORDANCE WITH THE CITY OF MADISON STANDARD SPECIFICATIONS (STANDARD SPECIFICATIONS).
- NO SITE GRADING OUTSIDE OR DOWNSLOPE OF PROPOSED S&T FENCE LOCATION. NO LAND DISTURBANCE BEYOND PROPERTY LINES UNLESS OTHERWISE SHOWN.
- JSD SHALL BE HELD HARMLESS AND DOES NOT WARRANT ANY DEVIATIONS BY THE OWNER/CONTRACTOR FROM THE APPROVED CONSTRUCTION PLANS THAT MAY RESULT IN DISCIPLINARY ACTIONS BY ANY OF ALL REGULATORY AGENCIES.
- DRAWING FOR REVIEW - NOT FOR CONSTRUCTION UNLESS OTHERWISE NOTED IN THE TITLE BLOCK.

UTILITY NOTES

- ALL WORK IN THE RIGHT OF WAY SHALL BE DONE IN ACCORDANCE WITH THE LATEST EDITION OF THE CITY OF MADISON STANDARD SPECIFICATIONS FOR PUBLIC WORKS CONSTRUCTION.
- THIS PLAN DOES NOT INCLUDE DESIGN OF GAS BUILDING SERVICE, ELECTRIC SERVICE, OR TELECOMMUNICATION SERVICES. CONTRACTOR TO COORDINATE DESIGN AND INSTALLATION OF THESE SERVICES WITH THE APPROPRIATE COMPANIES WHICH MAY INCLUDE ALLIANT ENERGY, CENTURYLINK, CABLE TV AND CENTURYTEL.
- DIMENSIONS TAKE PRECEDENCE OVER SCALE. CONTRACTOR TO VERIFY ALL DIMENSIONS IN FIELD.
- IF ANY ERRORS, DISCREPANCIES, OR OMISSIONS WITHIN THE PLAN BECOME APPARENT, IT SHALL BE BROUGHT TO THE ATTENTION OF THE ENGINEER PRIOR TO CONSTRUCTION SO THAT CLARIFICATION OR REVISION MAY OCCUR.
- LENGTHS OF ALL UTILITIES ARE TO CENTER OF STRUCTURES OR FITTINGS AND MAY VARY SLIGHTLY FROM PLAN. LENGTHS SHALL BE VERIFIED IN THE FIELD DURING CONSTRUCTION.
- ALL CONSTRUCTION SIGNING TO BE IN ACCORDANCE WITH THE CITY OF MADISON AND WISCONSIN DEPARTMENT OF TRANSPORTATION REQUIREMENTS.
- ALL PRIVATE WATER SERVICES SHALL BE INSTALLED WITH A 6" MINIMUM BURY EXCEPT AS NOTED.
- THE CONTRACTOR SHALL INSTALL A PEDESTRIAN FENCE AROUND ALL EXCAVATIONS TO BE LEFT OPEN OVER NIGHT AS REQUIRED.
- THE PROPOSED IMPROVEMENTS MUST BE CONSTRUCTED IN ACCORDANCE WITH ENGINEERING PLANS DESIGNED TO MEET ORDINANCES AND REQUIREMENTS OF THE MUNICIPALITY AND WISDOT, WOODCOCK, AND WISHR.
- PRIOR TO CONSTRUCTION, THE CONTRACTOR IS RESPONSIBLE FOR:
 - EXAMINING ALL SITE CONDITIONS RELATIVE TO THE CONDITIONS INDICATED ON THE ENGINEERING DRAWINGS. ANY DISCREPANCIES ARE TO BE REPORTED TO THE ENGINEER AND RESOLVED PRIOR TO THE START OF CONSTRUCTION.
 - OBTAINING ALL PERMITS INCLUDING PERMIT COSTS, TAP FEES, METER DEPOSITS, BONDS, AND ALL OTHER FEES REQUIRED FOR PROPOSED WORK TO OBTAIN OCCUPANCY.
 - VERIFYING UTILITY ELEVATIONS AND NOTIFYING ENGINEER OF ANY DISCREPANCY. NO WORK SHALL BE PERFORMED UNTIL THE DISCREPANCY IS RESOLVED.
 - NOTIFYING ALL UTILITIES PRIOR TO THE INSTALLATION OF ANY UNDERGROUND IMPROVEMENTS.
 - NOTIFYING THE DESIGN ENGINEER AND MUNICIPALITY 48 HOURS PRIOR TO THE START OF CONSTRUCTION TO ARRANGE FOR APPROPRIATE CONSTRUCTION OBSERVATION.
- THE CONTRACTOR IS RESPONSIBLE FOR PROVIDING THE ENGINEER WITH AS-BUILT CONDITIONS OF THE DESIGNATED IMPROVEMENTS IN ORDER THAT THE APPROPRIATE DRAWINGS CAN BE PREPARED, IF REQUIRED. ANY CHANGES TO THE DRAWINGS OR ADDITIONAL ITEMS MUST BE REPORTED TO THE ENGINEER AS WORK PROGRESSES.
- THE PRIME CONTRACTOR IS RESPONSIBLE FOR COORDINATING ALL CONSTRUCTION WITH OTHER CONTRACTORS INVOLVED WITH CONSTRUCTION OF THE PROPOSED DEVELOPMENT AND FOR REPORTING ANY ERRORS OR DISCREPANCIES BETWEEN THESE PLANS AND PLANS PREPARED BY OTHERS.
- ANY SANITARY SEWER, SANITARY SEWER SERVICES, WATER MAIN, WATER SERVICES, STORM SEWER, OR OTHER UTILITIES, WHICH ARE DAMAGED BY THE CONTRACTORS, SHALL BE REPAIRED TO THE OWNER'S SATISFACTION AT THE CONTRACTOR'S EXPENSE.
- CONTRACTOR IS RESPONSIBLE FOR SITE SAFETY DURING THE CONSTRUCTION OF IMPROVEMENTS.
- CONTRACTOR SHALL NOTIFY THE CITY OF MADISON, ALLIANT ENERGY, AND/OR CENTURYTEL A MINIMUM OF 48 HOURS BEFORE CONNECTING TO PUBLIC UTILITIES.
- ALL PRIVATE PIPE AND TUBING FOR WATER SERVICE SHALL CONFORM TO DSDS 384.30-7.
- ALL PRIVATE PIPE SHALL BE INSTALLED PER DSDS 382.40-8 INCLUDING AT LEAST 8" OF HORIZONTAL DISTANCE BETWEEN WATER PIPING AND SANITARY SEWER FROM CENTER OF PIPE TO CENTER OF PIPE AND 8" OF SEPARATION BETWEEN STORM SEWER AND WATER PIPING.
- THE CONTRACTOR SHALL ALLOW 10 WORKING DAYS FOR THE CONSTRUCTION OF GAS MAINS WHEN SCHEDULING THE WORK AND SHALL NOT RESTRICT ACCESS TO THE GAS MAIN CONTRACTOR OR OTHER UTILITY CONTRACTORS.
- THE CONTRACTOR IS RESPONSIBLE FOR CONTROLLING DUST AND EROSION DURING CONSTRUCTION AT HIS/HER EXPENSE. STREETS SHALL BE WATERED TO CONTROL DUST WHEN ORDERED BY THE ENGINEER.
- THE CONTRACTOR SHALL CONDUCT HIS/HER OPERATIONS SO AS TO BE IN CONFORMANCE WITH THE CITY EROSION CONTROL STANDARDS AND STANDARD CONSTRUCTION PRACTICES.

1 UTILITY PLAN
C-1.3 SCALE: 1" = 20'



634 West Main Street
Madison, WI 53703
608-257-1090
FAX 608-257-1092

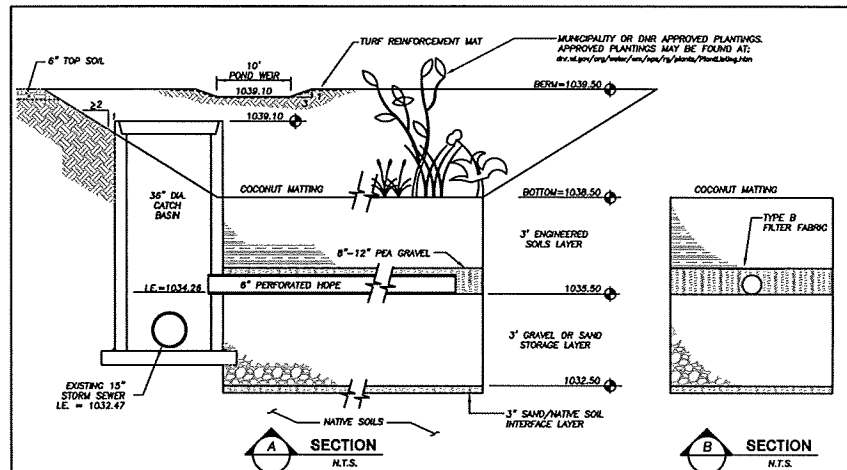
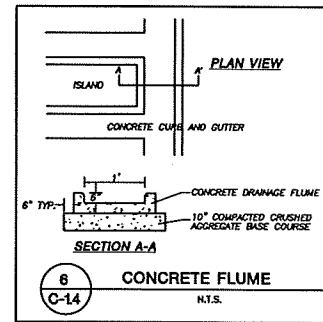
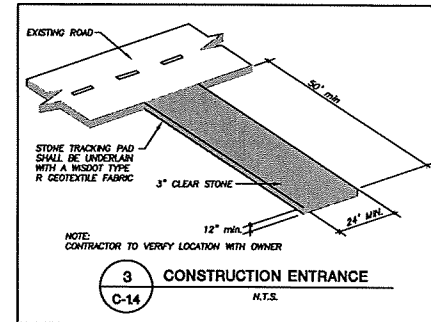
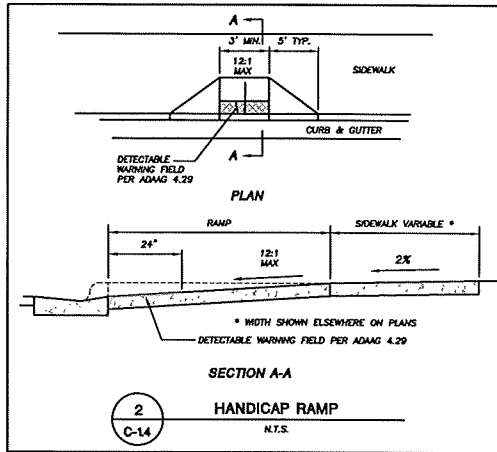
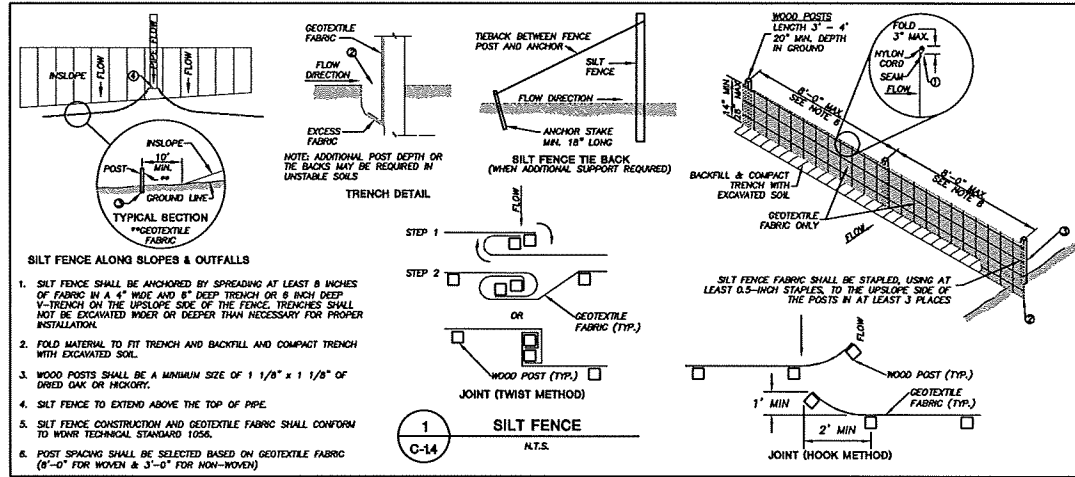
REV DATE

COPYRIGHTED DRAWING
© 2011, TJK Design Build, Inc. ALL RIGHTS RESERVED. PERMIT THE REPRODUCTION OF THIS DRAWING FOR THE INFORMATION OF THE USER ONLY. NO OTHER REPRODUCTION, DISTRIBUTION, OR DISSEMINATION OF THIS DRAWING IS PERMITTED WITHOUT THE WRITING OF TJK DESIGN BUILD, INC.

JSD Professional Services, Inc.
Engineers • Surveyors • Planners
161 HORIZON DRIVE, SUITE 101
MADISON, WISCONSIN 53703
PHONE: (608)848-5000

PROPOSED FACILITY FOR:
MULTI-TENANT COMMERCIAL BUILDING
669B ODANA ROAD
MADISON, WISCONSIN

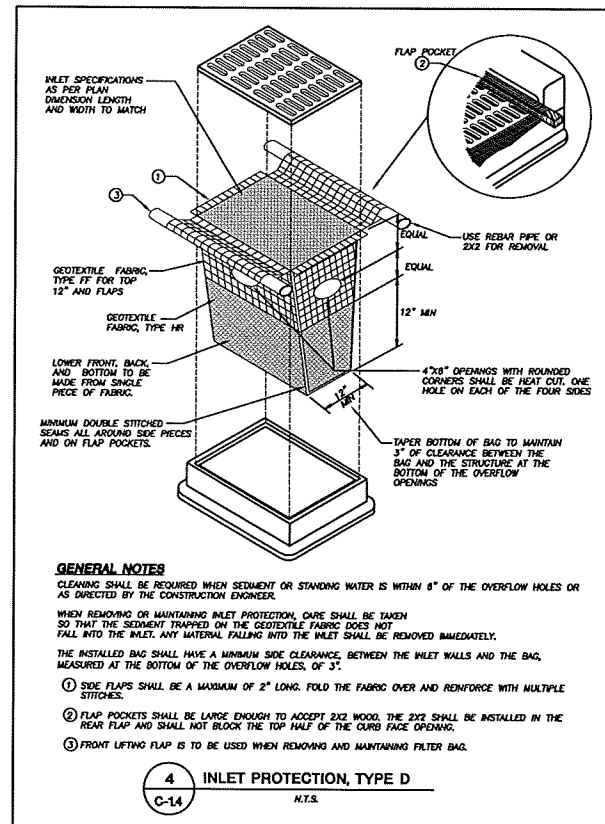
C-1.3
4.17.13



- GENERAL NOTES**
- ALL CONSTRUCTION PRACTICES SHALL MEET THE SPECIFICATIONS OF THE WISCONSIN TECHNICAL STANDARD 1004 - BIORETENTION FOR INFILTRATION. IT IS THE CONTRACTOR'S RESPONSIBILITY TO OBTAIN A COPY OF THIS STANDARD AND CONSTRUCT THE BIORETENTION DEVICE IN ACCORDANCE WITH THE REQUIREMENTS OUTLINED THEREIN.
 - CONTRACTOR SHALL INSTALL 36" OF ENGINEERED SOIL CONSISTING OF: 70% SAND AND 30% CERTIFIED COMPOST (SEE GENERAL NOTE 3).
 - CERTIFIED COMPOST SHALL CONSIST OF: >40% ORGANIC MATTER, <60% ASH CONTENT, pH OF 6-8, AND MOISTURE CONTENT OF 33-50% BY WEIGHT.
 - SAND/NATIVE SOIL INFILTRATION LAYER SHALL BE FORMED BY A LAYER OF SAND 3 INCHES DEEP, WHICH IS VERTICALLY MIXED WITH THE NATIVE SOIL TO A DEPTH OF 2-4 INCHES.
 - FILTER FABRIC SHALL BE PLACED ABOVE THE PERFORATED PIPE, BETWEEN THE PEA GRAVEL AND THE ENGINEERED SOIL, A WIDTH OF 4 FEET CENTERED OVER THE FLOW LINE OF THE PIPE.
 - ANNUAL RYE GRASS SHALL BE SEEDING AT 40 LB/ACRE WITH THE SEED MIX IN THE AREAS SURROUNDING THE BASIN, ON SIDE SLOPES, AND OVER ANY LAND THAT DISCHARGES INTO THE BASIN FOR EROSION CONTROL WHEN BASIN IS BROUGHT ON-LINE. ROOTSTOP AND PLUGS ARE REQUIRED TO ESTABLISH VEGETATION AT THE INVERT OF THE BASIN.
 - RUNOFF MUST INFILTRATE WITHIN 48-HOURS. BASINS UNABLE TO MAINTAIN THESE RATES MUST BE DEEP TILLED, REGRADED, AND IF NECESSARY REPLANTED TO RESTORE ORIGINAL INFILTRATION RATES.
 - ALL WORK TO BE CONDUCTED IN CONFORMANCE WITH APPLICABLE LOCAL, REGIONAL, AND STATE STORMWATER STANDARDS FOR THE PROJECT SITE AS APPROVED BY THE REGULATORY ENGINEER.
 - OWNER OR CONTRACTOR MUST CONSULT LANDSCAPE ARCHITECT OR ECOLOGICAL PLANTING AGENCY FOR APPROPRIATE PLANTS AND PLANTING CONFIGURATIONS.

INFILTRATION DEVICES ARE DESIGNED IN ACCORDANCE WITH THE SPECIFICATIONS OF THE WISCONSIN DEPARTMENT OF NATURAL RESOURCES (DNR), COUNTY, MUNICIPALITY, AND ENGINEERING STANDARD OF CARE. ALL DESIGNATED INFILTRATION AREAS (e.g., RAIN GARDENS, INFILTRATION BASINS, BIORETENTION DEVICES) SHALL BE FENCED PRIOR TO CONSTRUCTION AND REMAIN UNDISTURBED AND PROTECTED DURING THE CONSTRUCTION OF PROPOSED SITE IMPROVEMENTS. PROPOSED BIORETENTION DEVICES SHALL NOT BE CONSTRUCTED UNTIL THE DEVICE'S CONTRIBUTING WATERSHED AREA MEETS ESTABLISHED VEGETATION REQUIREMENTS SET FORTH WITHIN THE RESPECTIVE WISCONSIN TECHNICAL STANDARDS. IF THE LOCATION OF THE INFILTRATION AREA CONFLICTS WITH CONSTRUCTION STAGING AND/OR CONSTRUCTION TRAFFIC AND IS DISTURBED, COMPACTION MITIGATION WILL BE REQUIRED AT THE CONTRACTOR'S EXPENSE.

THE CONTRACTOR IS REQUIRED TO PROVIDE QUALIFIED STAFF FOR INSPECTION AND OBSERVATION OF THE CONSTRUCTION ACTIVITIES RELATING TO ALL JOB SITE REGULATORY COMPLIANCE INCLUDING THE PROTECTION AND CONSTRUCTION OF ALL STORMWATER MANAGEMENT FEATURES. ANY OBSERVATION OF PLAN OR SITE DISCREPANCIES SHALL BE REPORTED TO THE ENGINEER OF RECORD PRIOR TO CONSTRUCTION.



- GENERAL NOTES**
- CLEANING SHALL BE REQUIRED WHEN SEDIMENT OR STANDING WATER IS WITHIN 8" OF THE OVERFLOW HOLES OR AS DIRECTED BY THE CONSTRUCTION ENGINEER.
- WHEN REMOVING OR MAINTAINING INLET PROTECTION, CARE SHALL BE TAKEN SO THAT THE SEDIMENT TRAPPED ON THE GEOTEXTILE FABRIC DOES NOT FALL INTO THE INLET. ANY MATERIAL FALLING INTO THE INLET SHALL BE REMOVED IMMEDIATELY.
- THE INSTALLED BAG SHALL HAVE A MINIMUM SIDE CLEARANCE BETWEEN THE INLET WALLS AND THE BAG, MEASURED AT THE BOTTOM OF THE OVERFLOW HOLES, OF 3".
- SIDE FLAPS SHALL BE A MAXIMUM OF 2" LONG. FOLD THE FABRIC OVER AND REINFORCE WITH MULTIPLE STITCHES.
 - FLAP POCKETS SHALL BE LARGE ENOUGH TO ACCEPT 2X2 WOOD. THE 2X2 SHALL BE INSTALLED IN THE REAR FLAP AND SHALL NOT BLOCK THE TOP HALF OF THE CURB FACE OPENING.
 - FRONT LIFTING FLAP IS TO BE USED WHEN REMOVING AND MAINTAINING FILTER BAG.

File: 6:1201313562010m3135620 Civil Design.dwg, Layout: C1.4, User: ase, Plotted: May 07, 2013, 7:28am, xhp



634 West Main Street
 Madison, WI 53703
 608-257-1090
 FAX 608-257-1092

REV DATE

UNPROTECTED DRAWING
 © 2013 TJK Design/BUILD, Inc. ALL RIGHTS RESERVED. REUSE OF THIS DOCUMENT FOR THE INFORMATION OF ANY OTHER PROJECT OR FOR REPRODUCTION, REVISIONS, OR ANY OTHER PURPOSES WITHOUT THE EXPRESS WRITTEN PERMISSION OF TJK DESIGN/BUILD, INC. IS EXPRESSLY FORBIDDEN.

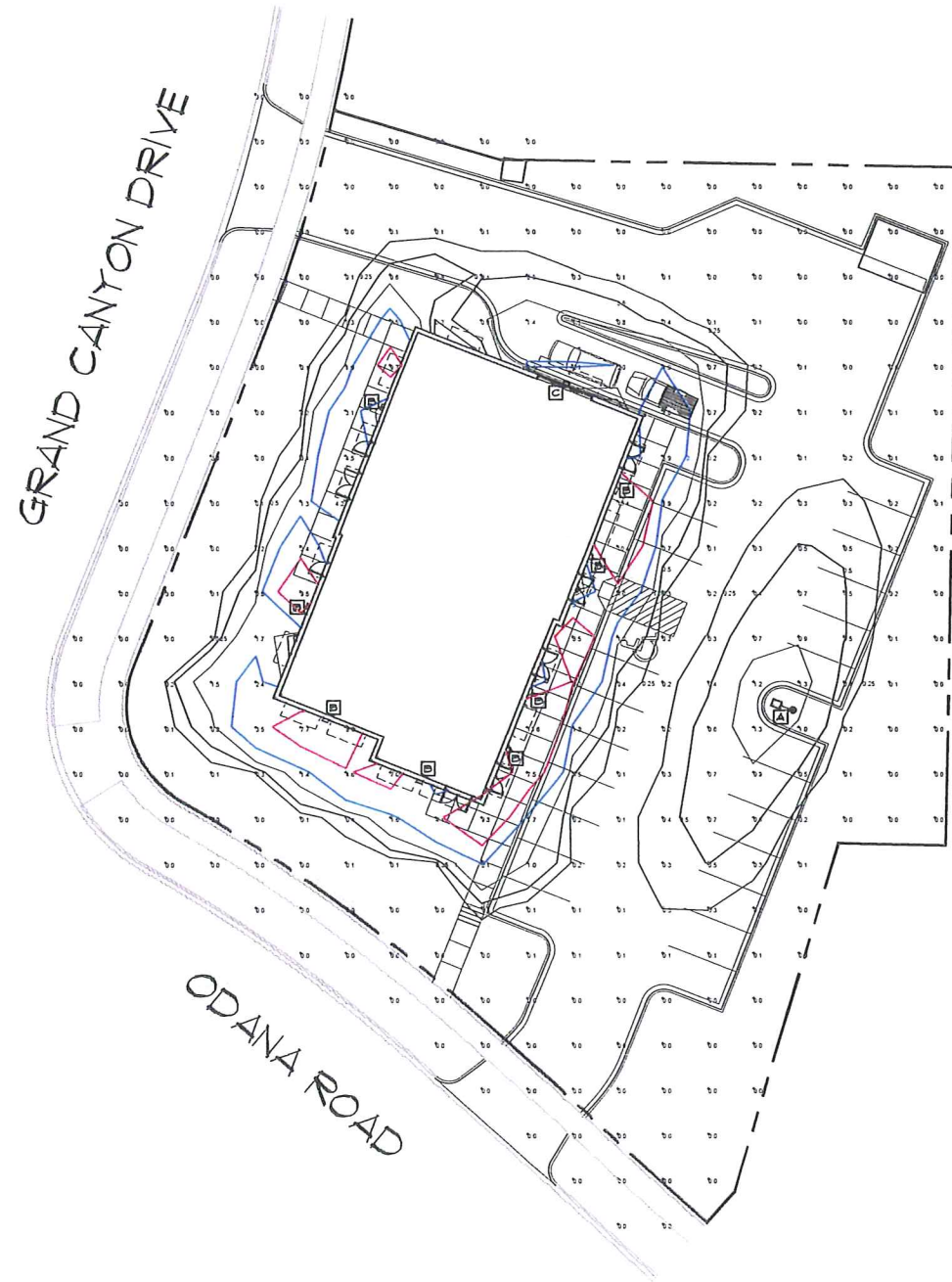
JSD Environmental Services, Inc.
 Engineers • Surveyors • Planners
 161 HORIZON DRIVE, SUITE 101
 MADISON, WISCONSIN 53704
 PHONE: (608)448-5080

PROPOSED FACILITY FOR:
 MULTI-TENANT
 COMMERCIAL BUILDING
 6698 COANA ROAD
 MADISON, WISCONSIN

C-1.4

4.17.13

1 DETAILS
 C-1.4 SCALE: NTS



1 PHOTOMETRIC PLAN
C-1.6 SCALE = 1/16" = 1'-0"



LIGHT FIXTURE KEY

- A STREETWORKS, RIDGEVIEW LED SINGLE HEAD PARKING LOT LIGHT FIXTURE
MODEL # RCG-B01-LED-E-U-R100-BZ
19'-0" X 19'-0" 60 STEEL POLE ON 3'-0" CONC. BASE
(19'-0" FROM GRADE)
- B COOPER LIGHTING, MCGRAW-EDISON IMPACT ELITE SMALL-LED
CATALOG #ST-BE1-LED-EI-02U-BZ-4UG
MOUNTING HEIGHT = 9'-0" ABOVE GRADE
- C COOPER LIGHTING, MCGRAW-EDISON IMPACT ELITE SMALL-LED
CATALOG #ST-BE1-LED-EI-PR3-BZ
MOUNTING HEIGHT = 11'-0" ABOVE GRADE



634 West Main Street
Madison, WI 53703
608-251-1090
FAX 608-251-1092

REV DATE

COPYRIGHTED DRAWING
© 2011 TJK Design Build, Inc. ALL RIGHTS RESERVED. NO PART OF THIS DOCUMENT MAY BE REPRODUCED, STORED IN A RETRIEVAL SYSTEM, OR TRANSMITTED IN ANY FORM OR BY ANY MEANS, ELECTRONIC OR MECHANICAL, WITHOUT THE WRITTEN PERMISSION OF TJK DESIGN BUILD, INC.

PROPOSED FACILITY FOR:
**MULTI-TENANT
COMMERCIAL BUILDING**
6638 ODANA ROAD
MADISON, WISCONSIN

C-1.6

5.7.13



634 West Main Street
Madison, WI 53703
608-257-1090
FAX 608-257-1092

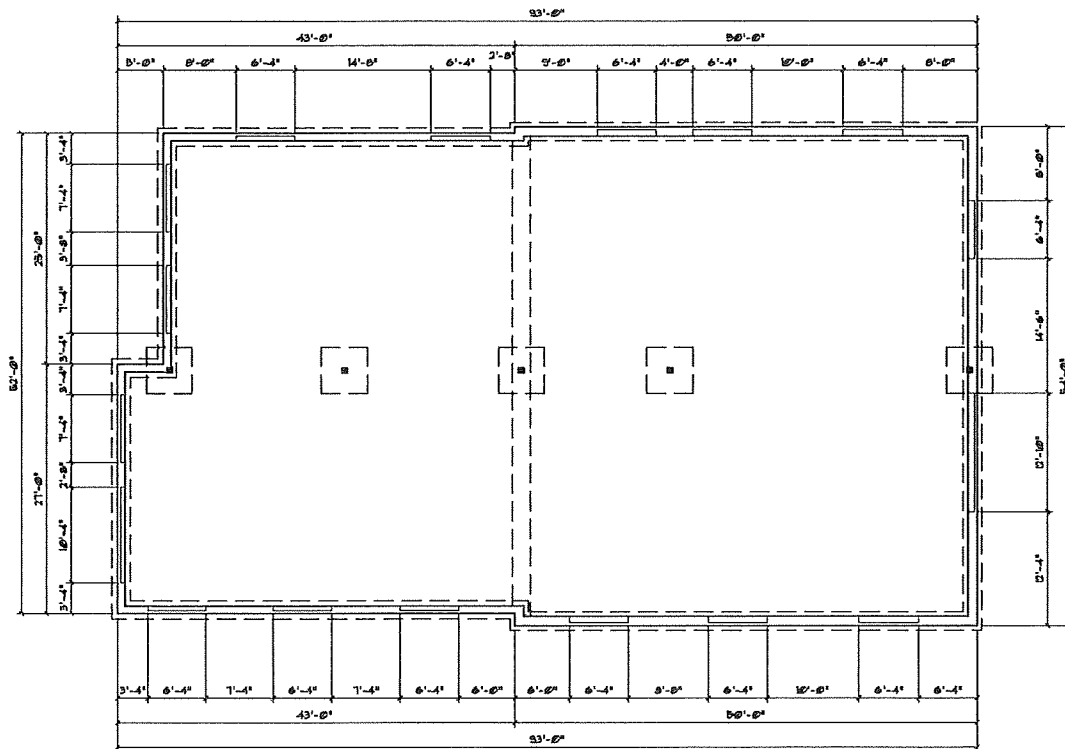
REV DATE

COPYRIGHTED DRAWING
© 2011 TJK DESIGN BUILD, INC. ALL RIGHTS RESERVED. NO PART OF THIS DOCUMENT MAY BE REPRODUCED, COPIED, OR TRANSMITTED IN ANY FORM OR BY ANY MEANS, ELECTRONIC OR MECHANICAL, WITHOUT THE WRITTEN PERMISSION OF TJK DESIGN BUILD, INC.

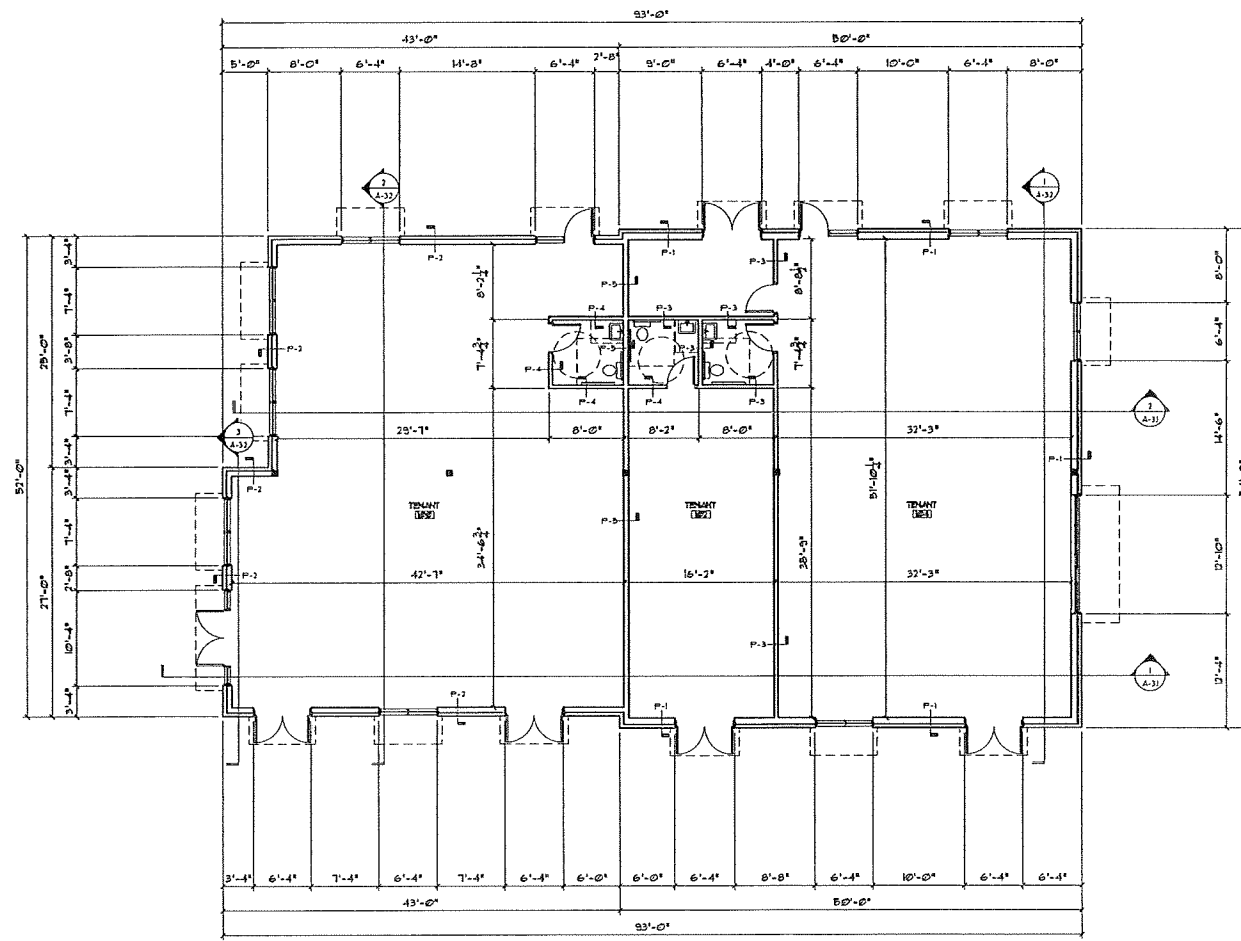
PROPOSED FACILITY FOR:
**MULTI-TENANT
COMMERCIAL BUILDING**
6698 ODIANA ROAD
MADISON, WISCONSIN

S-1.1

5.7.13



1 FOUNDATION PLAN
6-11 SCALE: 1/8" = 1' - 0"
SCALE: 1/4" = 1' - 0"
NORTH



1 FLOOR PLAN
 SCALE: 1/8" = 1' - 0"
 SCALE: 1/4" = 1' - 0"
 NORTH

GENERAL NOTES

- TYPICAL EXTERIOR WALL: MASONRY OR BRICK VENEER (SEE ELEVATIONS) 1" AIR SPACE AIR INFILTRATION BARRIER 5/8" CONCRETE SHEATHING 2x8 WOOD STUDS AT 16" O.C. WITH R-19 FIBERGLASS BATT INSULATION IN STUD CAVITIES, VAPOR BARRIER 5/8" GYPSUM WALLBOARD TO 0'-0" (UNLESS NOTED OTHERWISE), FINISH TO 10'-0" READY FOR PAINT
- TYPICAL TENANT DEMISING WALL: 2x4 WOOD STUDS AT 24" O.C. FULL HEIGHT WITH SOUND ATTENUATION BLANKETS IN STUD CAVITIES AND 5/8" GYPSUM WALLBOARD ON BOTH SIDES TO STRUCTURE (UNLESS NOTED OTHERWISE), TAPE AND FINISH TO 10'-0" READY FOR PAINT
- MASON TO USE COLORED MORTAR TO MATCH ADJACENT BLOCK BLOCK COLOR. VERIFY COLOR WITH ARCHITECT PRIOR TO INSTALL.
 - ALL GLAZING WITHIN A 7'-0" ARC OF EITHER VERTICAL EDGE OF THE DOOR IN A CLOSED POSITION AND WHERE THE BOTTOM EXPOSED EDGE OF THE GLAZING IS LESS THAN 7'-0" ABOVE THE WALKING SURFACE ARE TO BE TEMPERED SAFETY GLASS (TYPICAL)
 - ELECTRICIAN TO PROVIDE (2) SIGN CIRCUITS WITH PHOTO CELL ON / TRIP OFF WIRING TO THE INDIVIDUAL SUITE PANELS. JUNCTION BOX FOR SIGN AND LIGHTING TO BE FLESH MOUNTED ON BUILDING (NOT SURFACE MOUNTED)
 - EXIT SIGNS SHALL BE ILLUMINATED AT ALL TIMES. ENSURE CONTINUED ILLUMINATION FOR A DURATION OF NOT LESS THAN 90 MINUTES IN CASE OF PRIMARY POWER LOSS. EXIT SIGNS SHALL BE CONNECTED TO AN EMERGENCY ELECTRICAL SYSTEM PROVIDED FROM STORAGE BATTERIES
 - PROVIDE AN EMERGENCY ILLUMINATION POWER ALONG EGRESS PATHS IN ACCORDANCE WITH LOCAL ELECTRICAL CODE. ILLUMINATION IS TO LAST FOR A DURATION OF NOT LESS THAN 90 MINUTES AND SHALL CONSIST OF STORAGE BATTERIES (INTERIOR / EXTERIOR)
 - PAINTING CONTRACTOR TO STAIN AND SEAL ALL INTERIOR WOOD DOORS AND PAINT ALL HOLLOW METAL FIXTURES
 - FLOORING CONTRACTOR TO PROVIDE VINYL BASE THRU-OUT TENANT SPACE
 - PROVIDE STAINED AND POLISHED CONCRETE FLOOR (COLOR BY TENANT)
 - ELECTRICIAN TO PROVIDE (2) SIGN CIRCUITS PER TENANT SUITE WITH PHOTO CELL ON / TRIP OFF WIRING TO THE INDIVIDUAL SUITE PANELS. JUNCTION BOX FOR SIGN AND LIGHTING TO BE FLESH MOUNTED ON BUILDING (NOT SURFACE MOUNTED)
 - ELECTRIC CONTRACTOR TO PROVIDE DUPLEX OUTLETS BASED ON ONE OUTLET PER 60 SQ. FT.
 - ELECTRIC CONTRACTOR TO PROVIDE PRISMATIC LENS, FLUORESCENT, TUBE, LAY-IN LIGHT FIXTURES BASED ON FIXTURES/NO. FT.
 - EACH TENANT SPACE IS TO HAVE AN ACCESSIBLE WATER BOTTLE DRINKING FOUNTAIN WITH INDIVIDUAL DRINKING CUPS FURNISHED BY TENANT (NO PLUMBING) ELECTRICIAN TO PROVIDE OUTLET FOR COOLER
 - PROVIDE AND INSTALL STANDARD 2 x 4 FIBERED CEILING TILE IN STANDARD GRID AT 12" O.C. AND ALL DUCTWORK AND DIFFUSERS
 - PROVIDE AND INSTALL DUCTWORK, FLEX AND DIFFUSERS INTO CEILING GRID FOR STANDARD "WHITE-BOX"
 - (2) PHONE / DATA CONNECTION PER SUITE WITH END CONNECTIONS AND CABLES

PARTITION TYPES

- P-1: MASONRY OR BRICK VENEER (SEE ELEVATIONS) 1" AIR SPACE AIR INFILTRATION BARRIER 5/8" CONCRETE SHEATHING 2x8 WOOD STUDS AT 16" O.C. WITH R-19 FIBERGLASS BATT INSULATION IN STUD CAVITIES, VAPOR BARRIER 5/8" GYPSUM WALLBOARD TO 0'-0" (UNLESS NOTED OTHERWISE), FINISH TO 10'-0" READY FOR PAINT
- P-2: MASONRY OR BRICK VENEER (SEE ELEVATIONS) 1" AIR SPACE AIR INFILTRATION BARRIER 5/8" CONCRETE SHEATHING 2x8 WOOD STUDS AT 16" O.C. WITH R-19 FIBERGLASS BATT INSULATION IN STUD CAVITIES, VAPOR BARRIER 5/8" GYPSUM WALLBOARD TO 0'-0" (UNLESS NOTED OTHERWISE), FINISH TO 10'-0" READY FOR PAINT
- P-3: 2x4 WOOD STUD DEMISING WALL AT 16" O.C. WITH 5/8" GYPSUM WALLBOARD EACH SIDE TO DECK TAPED / FINISHED TO 10'-0"
- P-4: 2x4 WOOD STUD WALL AT 24" O.C. TO 5'-0" AFF. WITH 5/8" GYPSUM WALLBOARD EACH SIDE
- P-5: 2x4 WOOD STUD DEMISING WALL AT 16" O.C. WITH 5/8" GYPSUM WALLBOARD EACH SIDE TO DECK TAPED / FINISHED TO 10'-0"

TOILET ROOM NOTES:

- BATHROOM LIGHTING TO BE A SINGLE TWO-TUBE SURFACE MOUNTED BRASS FIXTURE
- BATHROOM FLOORING TO BE C.T. WITH 6" C.T. BASE
- BATHROOM DOORS TO BE 3'-0" x 7'-0" SOLID CORE OAK DOOR IN HOLLOW METAL FRAMES WITH "A" SERIES PRIVACY LOCK (DOORS TO BE STAINED / FRAMES TO BE PAINTED)
- BATHROOMS TO HAVE EXHAUST FANS VENTED THRU ROOF BY HVAC CONTRACTOR
- PLUMBING CONTRACTOR TO PROVIDE (1) 8-GALLON ELECTRIC WATER HEATER MOUNTED ABOVE ROOM ON FLYWOOD PLATFORM
- 2 x 4 VINYL COATED SHEETROCK CEILING AT 8'-0"

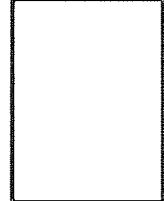


634 West Main Street
 Madison, WI 53703
 608-257-1090
 FAX 608-257-1092

REV DATE

REV	DATE

COPYRIGHTED DRAWING
 THE TJK DESIGN BUILD, INC. ALL RIGHTS RESERVED. WITHIN THIS DOCUMENT FOR THE PROTECTION WHICH MAY BE REPRODUCED, IN WHOLE OR IN PART, UNLESS EXPRESSLY AUTHORIZED BY LETTER FROM TJK DESIGN BUILD, INC.



PROPOSED FACILITY FOR:
MULTI-TENANT COMMERCIAL BUILDING
 6698 ODIANA ROAD
 MADISON, WISCONSIN

A-1.1

5.7.13



634 West Main Street
 Madison, WI 53703
 608-257-1090
 FAX 608-257-1092

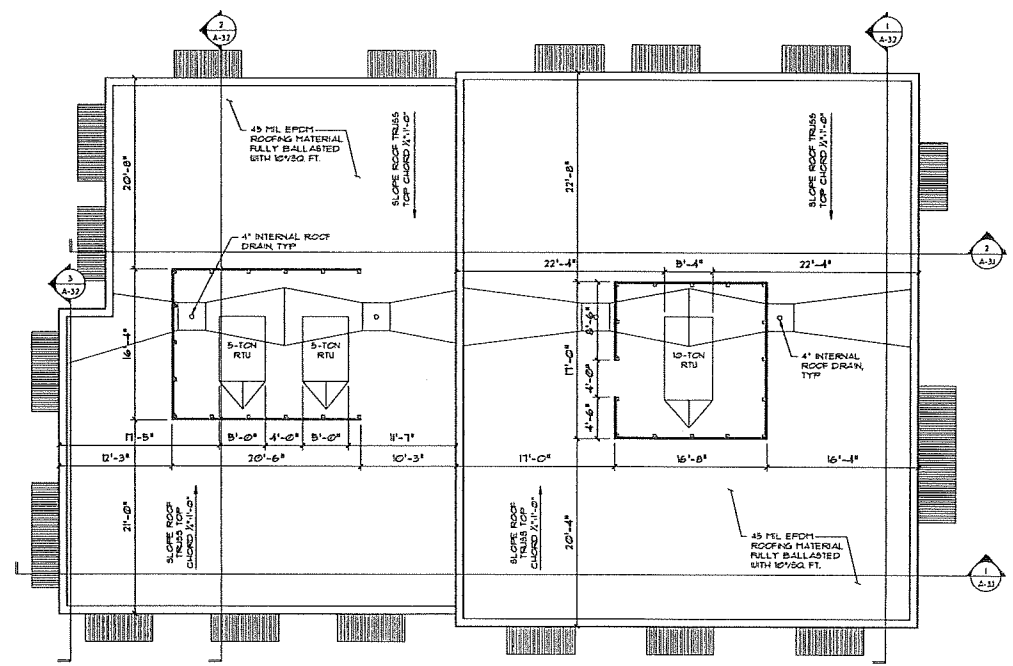
REV DATE

COPYRIGHTED DRAWING
 © 2011 TJK Design Build, Inc. All rights reserved. Neither this document nor the information herein may be reproduced, distributed, used or disclosed, in whole or in part, unless expressly authorized in writing by TJK Design Build, Inc.

PROPOSED FACILITY FOR:
MULTI-TENANT COMMERCIAL BUILDING
 6638 ODANA ROAD
 MADISON, WISCONSIN

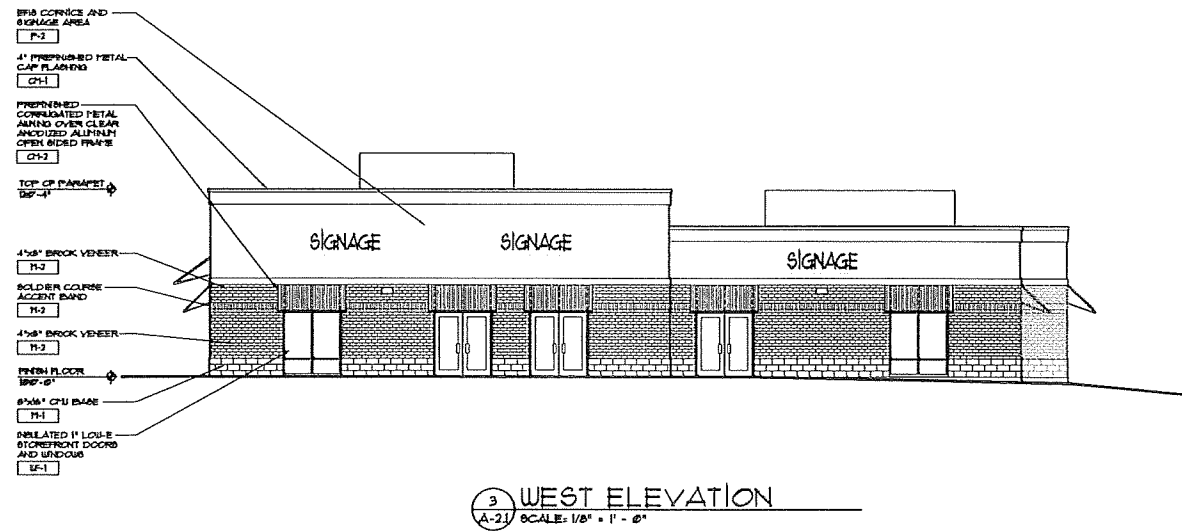
A-12

5.7.13



1 ROOF PLAN
 A-12 SCALE: 1/8" = 1' - 0"
 0 4' 8' 16'-0"
 SCALE 1/8" = 1'-0"
 NORTH

EXTERIOR FINISH MATERIAL SCHEDULE				
TAG	MANUFACTURER	PRODUCT NUMBER	COLOR	DESCRIPTION/REMARKS
CH-1	COATED METALS GROUP	--	--	PARAPET CAP FLASHING
CH-2	COATED METALS GROUP	--	--	CORRUGATED METAL SIDING
CH-3	COATED METALS GROUP	--	DARK BRONZE	PREPARED METAL VENEER SILL FLASHING
M-1	COUNTY MATERIAL CORP.	COUNTY STONE	--	8 1/2" x 11" SPLIT FACE BRICK, COLORED TO MATCH
M-2	OLEN-GRYB BRICK	EXTENDED SERIES	BLACKSTONE	4 1/2" MODULAR FACE BRICK, COLORED TO MATCH
P-1	TOTAL WALL	--	164H KUMAKI	EXTERIOR FINISH AND INSULATION SYSTEM SURFACE FINISH
WF-1	KALNEER	--	DARK BRONZE	STORE FRONT WINDOWS AND DOORS



TJK
DESIGN BUILD

634 West Main Street
Madison, WI 53703
608-257-1090
FAX 608-257-1092

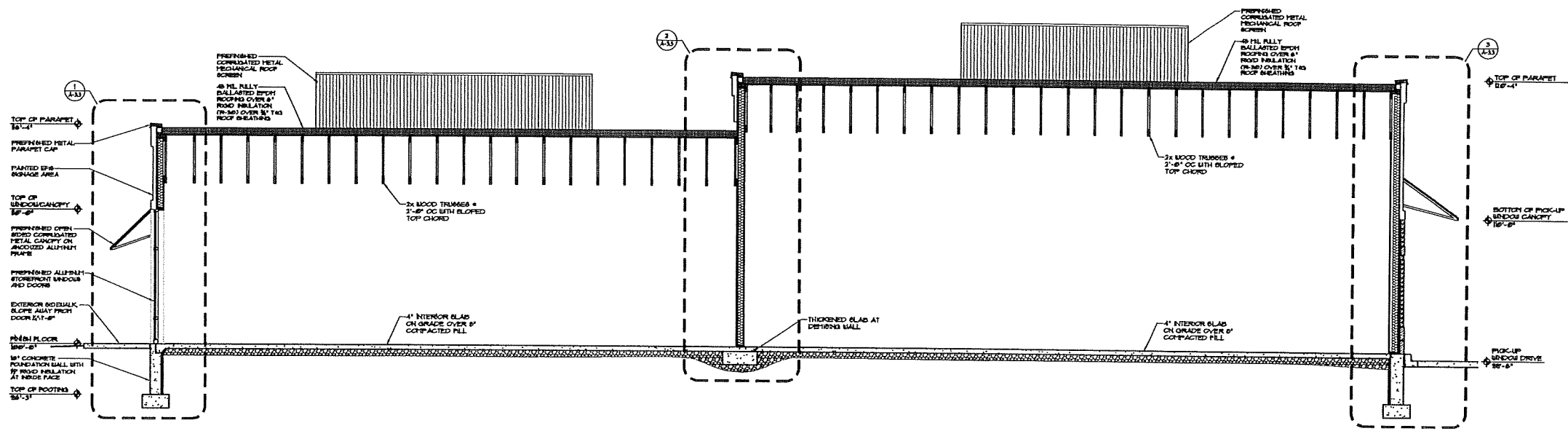
REV DATE

COPYRIGHTED DRAWING
© 2013 TJK DESIGN BUILD, INC. ALL RIGHTS RESERVED. NO PART OF THIS DOCUMENT MAY BE REPRODUCED, DISTRIBUTED, USED, OR DISPLAYED IN ANY MANNER OR BY ANY MEANS WITHOUT THE WRITTEN PERMISSION OF TJK DESIGN BUILD, INC.

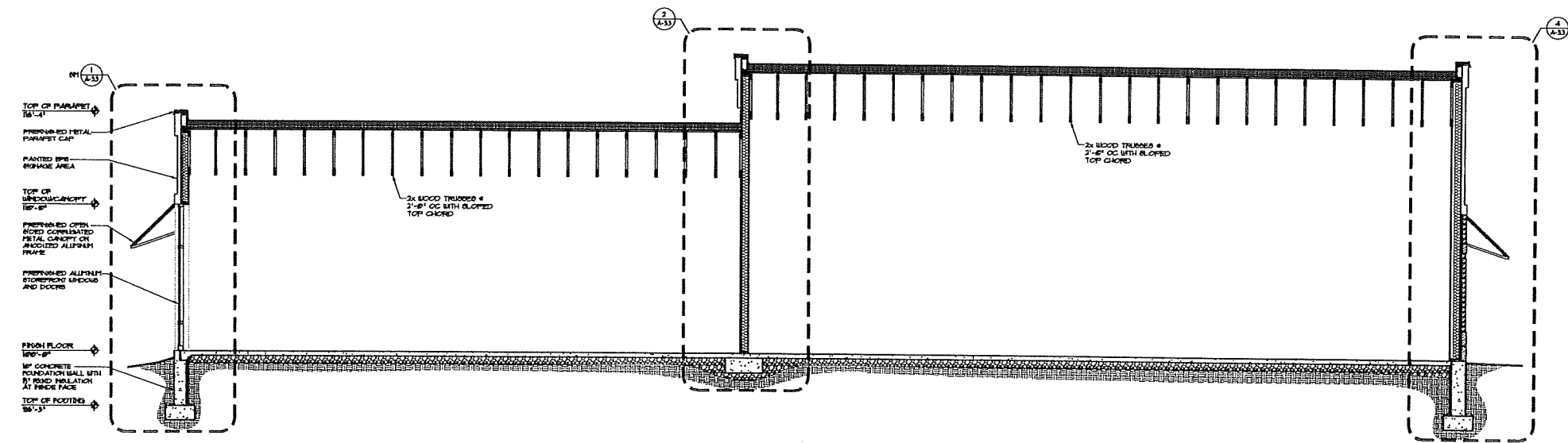
PROPOSED FACILITY FOR:
**MULTI-TENANT
COMMERCIAL BUILDING**
6698 CEDAR ROAD
MADISON, WISCONSIN

A-2.1

5.7.13



1 NORTH-SOUTH BUILDING SECTION
 (A-3) SCALE: 1/4" = 1' - 0"



2 NORTH-SOUTH BUILDING SECTION
 (A-3) SCALE: 1/4" = 1' - 0"



634 West Main Street
 Madison, WI 53703
 608-251-1090
 FAX 608-251-1092

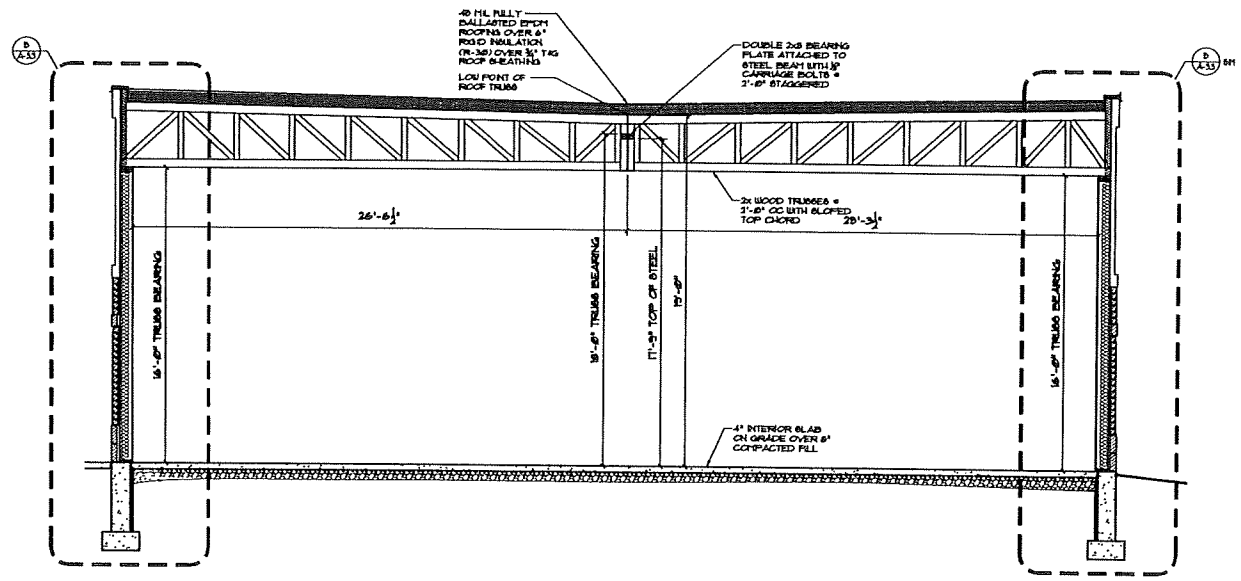
REV DATE

COPYRIGHTED DRAWING
 THIS DRAWING IS THE PROPERTY OF TJK DESIGN BUILD, INC. AND IS NOT TO BE REPRODUCED OR TRANSMITTED IN ANY FORM OR BY ANY MEANS, ELECTRONIC OR MECHANICAL, INCLUDING PHOTOCOPYING, RECORDING, OR BY ANY INFORMATION STORAGE AND RETRIEVAL SYSTEM, WITHOUT THE WRITTEN PERMISSION OF TJK DESIGN BUILD, INC.

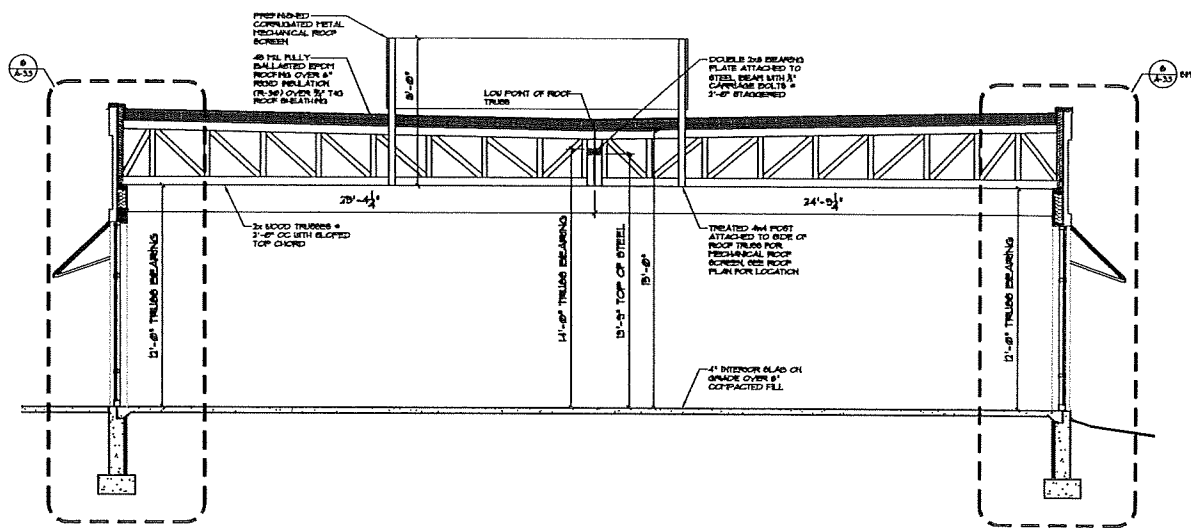
PROPOSED FACILITY FOR:
**MULTI-TENANT
 COMMERCIAL BUILDING**
 6698 OGDANA ROAD
 MADISON, WISCONSIN

A-3.1

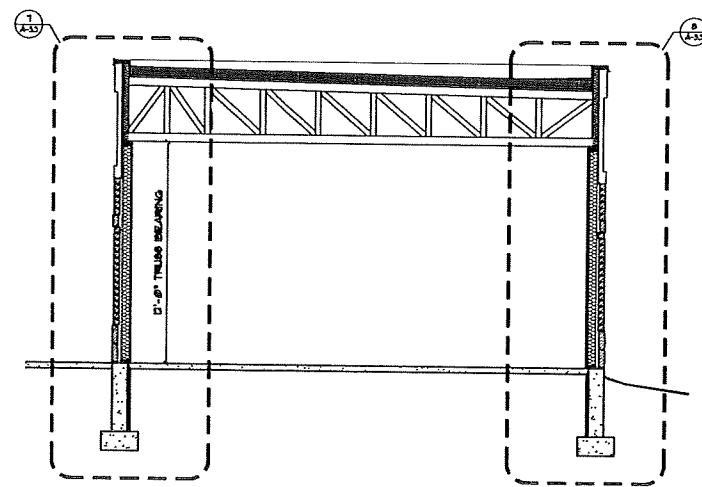
5.7.13



1 EAST-WEST BUILDING SECTION
A-32 SCALE: 1/4" = 1' - 0"



2 EAST-WEST BUILDING SECTION
A-32 SCALE: 1/4" = 1' - 0"



3 EAST-WEST BUILDING SECTION
A-32 SCALE: 1/4" = 1' - 0"



EXISTING BUILDING LOOKING SOUTH



EXISTING BUILDING LOOKING NORTH



EXISTING BUILDING LOOKING EAST



EXISTING BUILDING LOOKING WEST

TJK
DESIGN BUILD

634 West Main Street
Madison, WI 53703
608-257-1090
FAX 608-257-1092

REV DATE

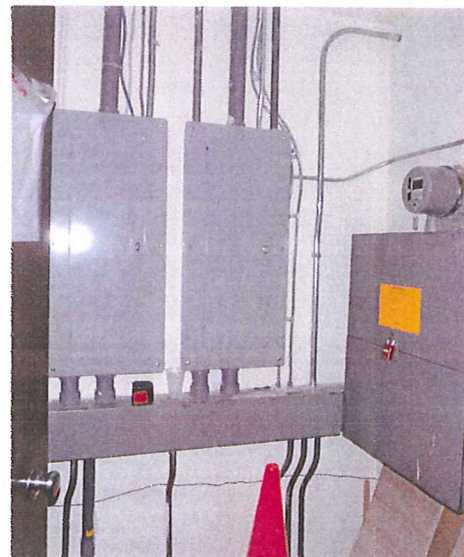
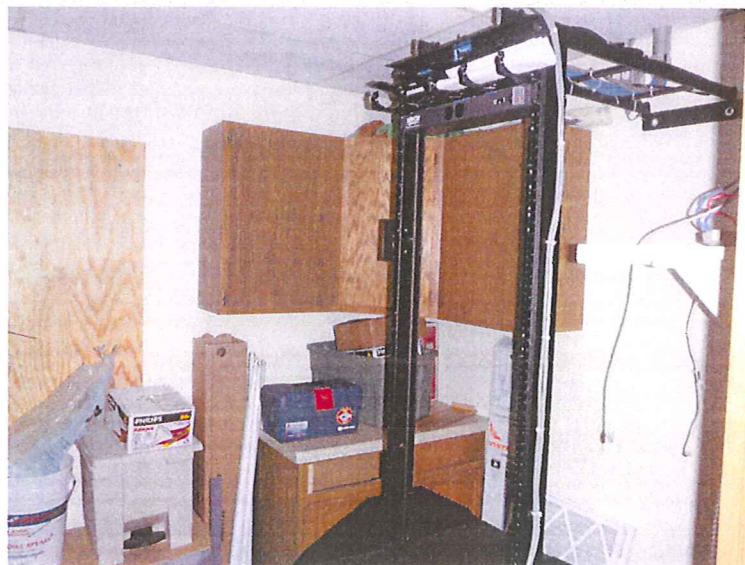
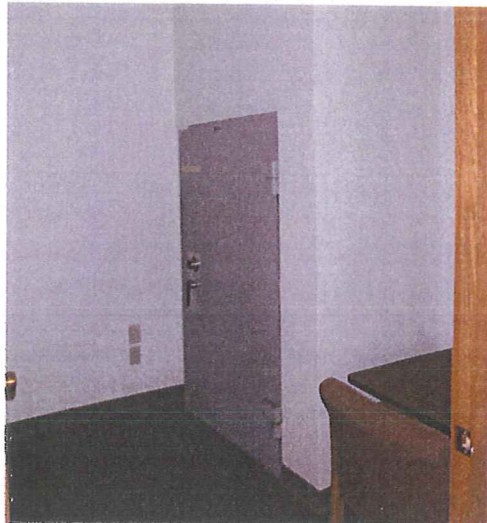
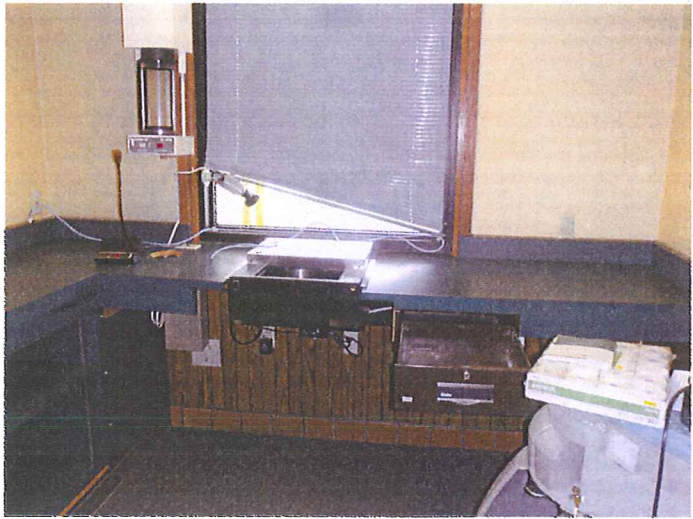
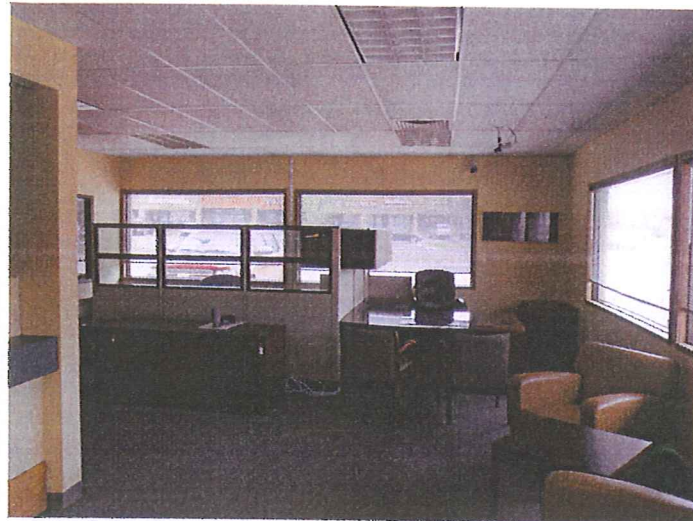
COPYRIGHTED DRAWING
© 2011 TJK Design Build, Inc. ALL RIGHTS RESERVED. NEITHER THIS DOCUMENT NOR THE INFORMATION HEREIN MAY BE REPRODUCED, DISTRIBUTED, USED OR DISCLOSED IN WHOLE OR IN PART, UNLESS EXPRESSLY AUTHORIZED IN WRITING BY TJK DESIGN BUILD, INC.

PROPOSED FACILITY FOR:
**MULTI-TENANT
COMMERCIAL BUILDING**

6698 ODANA ROAD
MADISON, WISCONSIN

D-1.1

5.7.13



TJK
DESIGN BUILD

634 West Main Street
Madison, WI 53703
608-257-1090
FAX 608-257-1092

REV DATE

COPYRIGHTED DRAWING
© 2011 TJK Design Build, Inc. ALL
RIGHTS RESERVED. NEITHER THIS
DOCUMENT NOR THE INFORMATION
HEREIN MAY BE REPRODUCED,
DISTRIBUTED, USED OR DISCLOSED,
IN WHOLE OR IN PART, UNLESS
EXPRESSLY AUTHORIZED IN
WRITING BY TJK DESIGN BUILD, INC.

PROPOSED FACILITY FOR:
**MULTI-TENANT
COMMERCIAL BUILDING**
6698 ODANA ROAD
MADISON, WISCONSIN

D-12

5.7.13