

APPLICATION FOR  
URBAN DESIGN COMMISSION  
REVIEW AND APPROVAL

AGENDA ITEM # \_\_\_\_\_  
Project # \_\_\_\_\_  
Legistar # 30400

DATE SUBMITTED: <u>FEB. 25, 2014</u>	Action Requested
UDC MEETING DATE: <u>MARCH 5, 2014</u>	<input type="checkbox"/> Informational Presentation
	<input type="checkbox"/> Initial Approval and/or Recommendation
	<input checked="" type="checkbox"/> Final Approval and/or Recommendation

PLEASE PRINT!

PLEASE PRINT!

PROJECT ADDRESS: 5708 ODANA ROAD

ALDERMANIC DISTRICT: 19TH

OWNER/DEVELOPER (Partners and/or Principals) ARCHITECT/DESIGNER/OR AGENT:  
SMART MOTORS- ALLEN FOSTER JIM TRIATIK

5901 ODANA ROAD SULLIVAN DESIGN-BUILD

MADISON WI 53719

CONTACT PERSON: JIM TRIATIK - SULLIVAN DESIGN-BUILD

Address: 1314 EMIL ST.  
MADISON WI 53713

Phone: 257-2289

Fax: 257-2906

E-mail address: JIM @ SULLIVANDESIGNBUILD.COM

TYPE OF PROJECT:

(See Section A for:)

- Planned Unit Development (PUD)
  - General Development Plan (GDP)
  - Specific Implementation Plan (SIP)
- Planned Community Development (PCD)
  - General Development Plan (GDP)
  - Specific Implementation Plan (SIP)
- Planned Residential Development (PRD)
- New Construction or Exterior Remodeling in an Urban Design District \* (A public hearing is required as well as a fee)
  - School, Public Building or Space (Fee may be required)
- New Construction or Addition to or Remodeling of a Retail, Hotel or Motel Building Exceeding 40,000 Sq. Ft.
- Planned Commercial Site

(See Section B for:)

- New Construction or Exterior Remodeling in C4 District (Fee required)

(See Section C for:)

- R.P.S.M. Parking Variance (Fee required)

(See Section D for:)

- Comprehensive Design Review\* (Fee required)
- Street Graphics Variance\* (Fee required)
- Other \_\_\_\_\_

CITY OF MADISON

9:51 a.m.

FEB 25 2014

Planning & Community  
& Economic Development

\*Public Hearing Required (Submission Deadline 3 Weeks in Advance of Meeting Date)

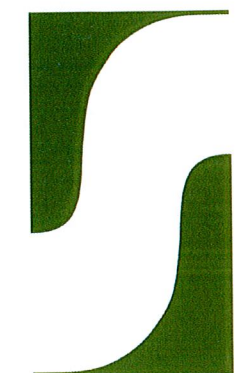
Where fees are required (as noted above) they apply with the first submittal for either initial or final approval of a project.



**SUBMITTAL TO:**  
CITY OF MADISON  
URBAN DESIGN COMMISSION  
FINAL PRESENTATION

**TYPE OF PROJECT:**  
New Car Prep Building  
5708 Odana Road

**SUBMITTED:**  
02/26/2014



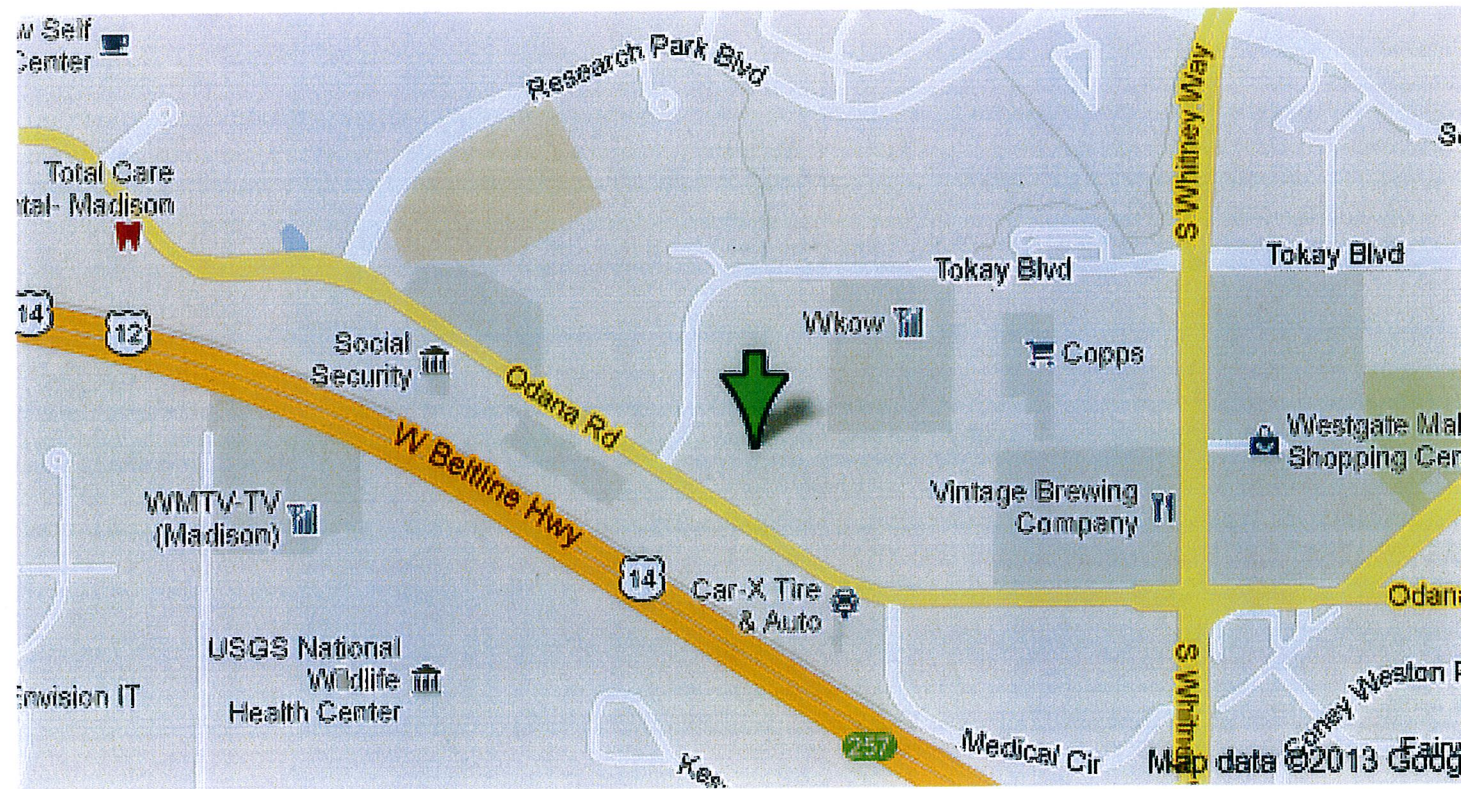
Since 1937

**Sullivan**  
designBUILD

TEL: 608.257.2289



**Locator Map for Smart Motors Express Lube Addition  
5708 Odana Road**



February 26, 2014

**Letter of Intent for Smart Motors – New Car Prep Building  
5708 Odana Road**

Dear Commission Members,

Smart Motors continues to grow and needs to expand their current operations. We are proposing to construct a building that would be used to prep new cars, referring to this as Phase 1. It would be built across the street from Smart Motors main building on the site that currently is used for inventory parking. The project includes the demolition of a vacant office building (5708 Odana Road) this spring and another soon to be vacant office building (5712 Odana Road). The removal of 5712 Odana would make room for a new Pre-Owned auto sales building, starting construction in the fall of 2014.(Phase 2) Operations of the existing pre-owned sales building at 5702 Odana Road would then move to this new facility.

Our Project team includes:

Architect: Jim Triatik of Sullivan Design Build  
 General Contractor: Sullivan Design Build  
 Landscape Design: Barnes Inc.  
 Site Engineering: Quam Engineering, L.L.C.  
 Site Lighting: Rob Rudolf of Electric Construction, Inc.

The timeline for the entire project will be approximately six months, with construction to start this spring.

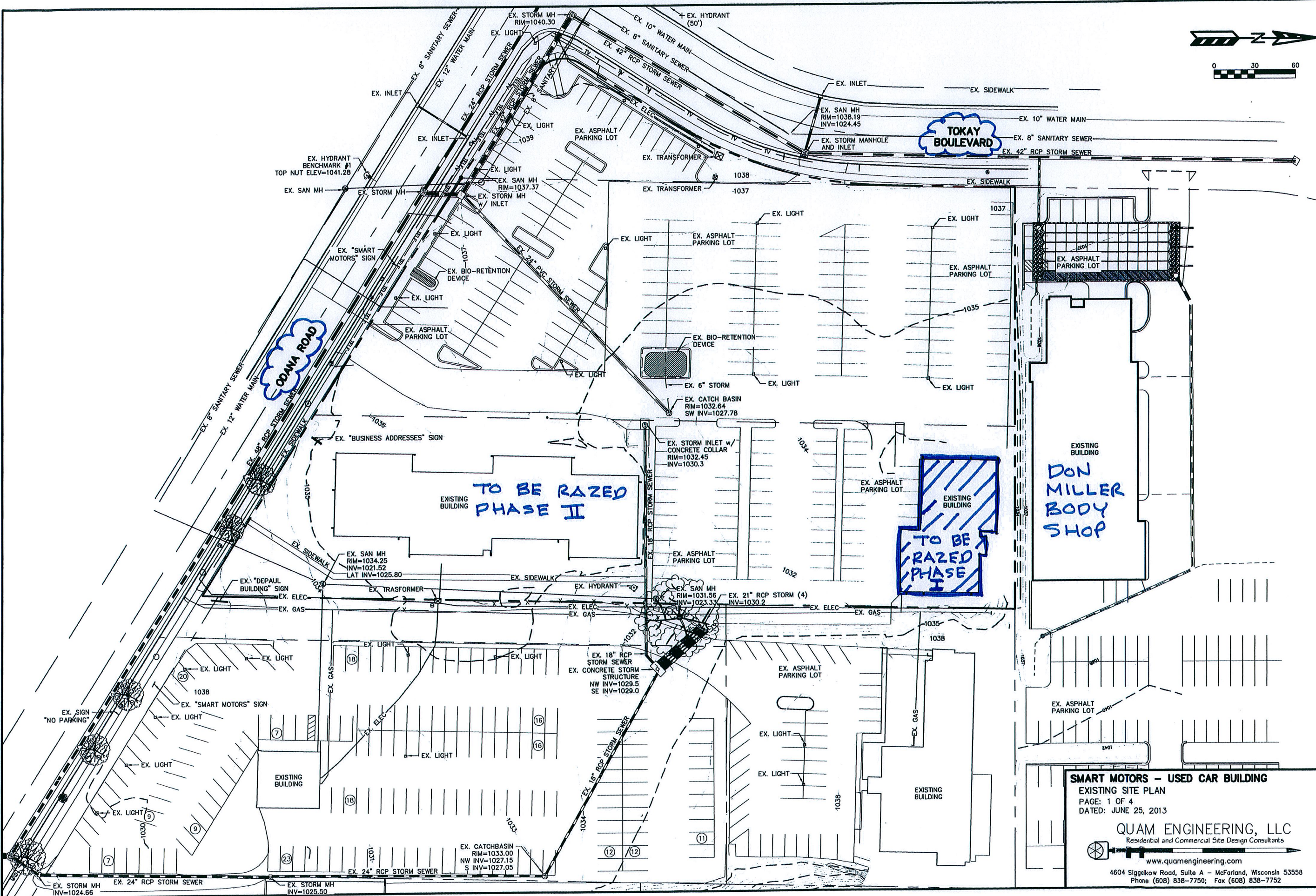
If you should require additional information, please contact me at 257-2289.

Sincerely,  
**Sullivan designBUILD**



James M. Triatik, A.I.A.  
 Vice President / Project Architect





**SMART MOTORS - USED CAR BUILDING**  
 EXISTING SITE PLAN  
 PAGE: 1 OF 4  
 DATED: JUNE 25, 2013

**QUAM ENGINEERING, LLC**  
 Residential and Commercial Site Design Consultants  
 www.quamengineering.com  
 4604 Siggelkow Road, Suite A - McFarland, Wisconsin 53558  
 Phone (608) 838-7750; Fax (608) 838-7752



**PARKING LOT PLAN SITE INFORMATION BLOCK**

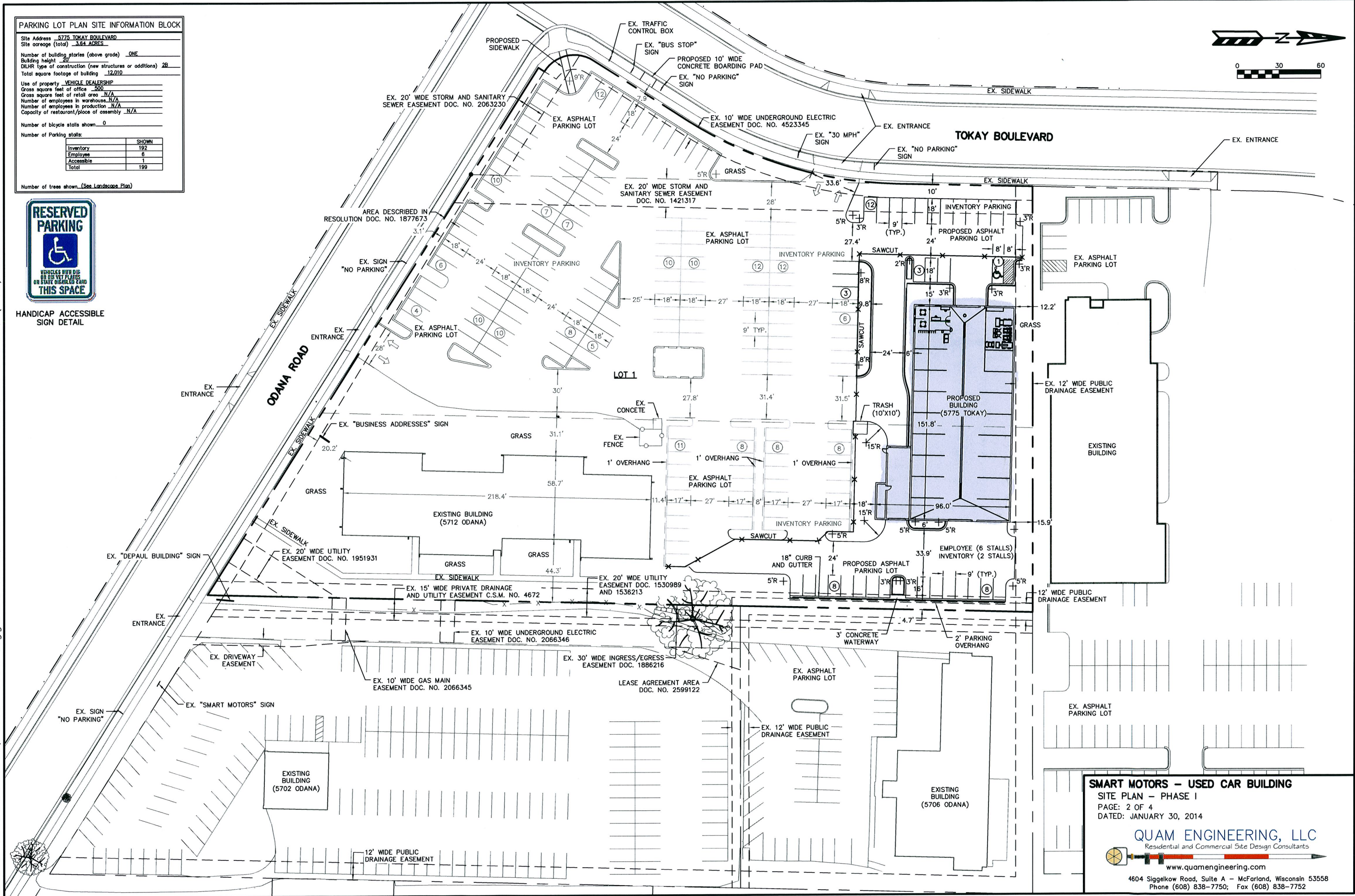
Site Address 5775 TOKAY BOULEVARD  
 Site acreage (total) 3.84 ACRES  
 Number of building stories (above grade) ONE  
 Building height 20'  
 DILHR type of construction (new structures or additions) 2B  
 Total square footage of building 12,010  
 Use of property VEHICLE DEALERSHIP  
 Gross square feet of office 500  
 Gross square feet of retail area N/A  
 Number of employees in warehouse N/A  
 Number of employees in production N/A  
 Capacity of restaurant/office of assembly N/A  
 Number of bicycle stalls shown 0  
 Number of Parking stalls:

	SHOWN
Inventory	192
Employee	6
Accessible	1
<b>Total</b>	<b>199</b>

Number of trees shown (See Landscape Plan)



HANDICAP ACCESSIBLE SIGN DETAIL



**SMART MOTORS - USED CAR BUILDING**  
 SITE PLAN - PHASE I  
 PAGE: 2 OF 4  
 DATED: JANUARY 30, 2014

**QUAM ENGINEERING, LLC**  
 Residential and Commercial Site Design Consultants

www.quamengineering.com  
 4604 Siggelkow Road, Suite A - McFarland, Wisconsin 53558  
 Phone (608) 838-7750; Fax (608) 838-7752



**PLANT MATERIAL LIST - PHASE 1**

Qty	Code	Common Name	Botanical Name	Planting Size
<b>Broadleaf Deciduous</b>				
2	SGM	Sienna Glen Maple	Acer x freemanii 'Sienna'	2-2.5' B&B
1	CHB	Common Hackberry	Celtis occidentalis	2-2.5' B&B
4	SKH	Skyline Honeylocust	Gleditsia triacanthos 'Skyline'	2-2.5' B&B
2	SSL	Sterling Silver Linden	Tilia tomentosa 'Sterling Silver'	2-2.5' B&B
<b>Conifers</b>				
1	MBJ	Mountbatten Juniper	Juniperus chinensis 'Mountbatten'	5-6' B&B
1	EWP	Eastern White Pine	Pinus strobus	5-6' B&B
11	TTY	Taunton Yew	Taxus x media 'Tauntonii'	18-24" B&B
4	HSA	Holmstrup Arborvitae	Thuja occidentalis 'Holmstrup'	4-5' B&B
21	PMA	Pyramidal Arborvitae	Thuja occidentalis 'Pyramidal'	4-5' B&B
<b>Shrubs</b>				
17	CPB	Crimson Pygmy Barberry	Berberis thunbii v atrop 'Crimson Pygmy'	#3 CONT.
9	DNB	Diablo Ninebark	Physocarpus opulifolius 'Diablo'	18" Pot
7	GLS	Grow-Low Sumac	Rhus aromatica 'Gro-low'	#2 CONT.
34	GMS	Goldmound Spirea	Spiraea japonica 'Goldmound'	#2 CONT.
18	MCS	Magic Carpet Spirea	Spiraea japonica 'Magic Carpet'	#2 CONT.
11	MKL	Miss Kim Lilac	Syringa velutina 'Miss Kim'	18-24" Pot
7	BMV	Blue Muffin Viburnum	Viburnum dentatum 'Blue Muffin'	2-3' Pot
<b>Perennials</b>				
4	KFRG	Karl Foersters Reed Grass	Calamagrostis acutifolia 'Karl Foerster'	#1 CONT.
20	PMD	Pardon Me Daylily	Hemerocallis 'Pardon Me'	#1 CONT.
4	HMSG	Heavy Metal Switch Grass	Panicum virgatum 'Heavy Metal'	#1 CONT.

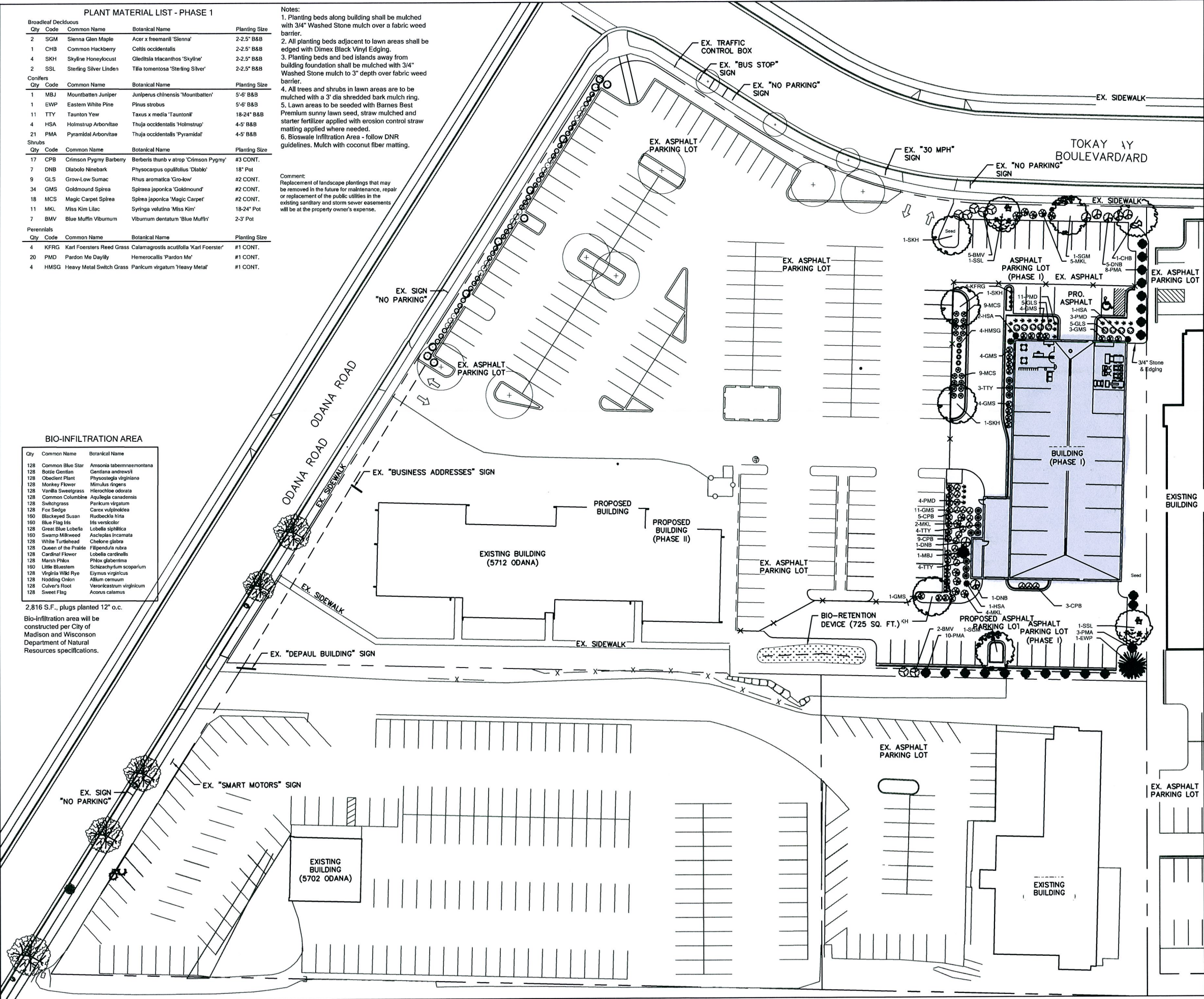
- Notes:**
- Planting beds along building shall be mulched with 3/4" Washed Stone mulch over a fabric weed barrier.
  - All planting beds adjacent to lawn areas shall be edged with Dimex Black Vinyl Edging.
  - Planting beds and bed islands away from building foundation shall be mulched with 3/4" Washed Stone mulch to 3" depth over fabric weed barrier.
  - All trees and shrubs in lawn areas are to be mulched with a 3' dia shredded bark mulch ring.
  - Lawn areas to be seeded with Barnes Best Premium sunny lawn seed, straw mulched and starter fertilizer applied with erosion control straw matting applied where needed.
  - Bioswale Infiltration Area - follow DNR guidelines. Mulch with coconut fiber matting.

**Comment:**  
Replacement of landscape plantings that may be removed in the future for maintenance, repair or replacement of the public utilities in the existing sanitary and storm sewer easements will be at the property owner's expense.

**BIO-INFILTRATION AREA**

Qty	Common Name	Botanical Name
128	Common Blue Star	Amsonia tabernaemontana
128	Bottle Gentian	Gentiana andrewsii
128	Obedient Plant	Physostegia virginiana
128	Monkey Flower	Mimulus ringens
128	Vanilla Sweetgrass	Hieracium odorata
128	Common Columbine	Aquilegia canadensis
128	Switchgrass	Panicum virgatum
128	Fox Sedge	Carex vulpinoidea
150	Black-eyed Susan	Rudbeckia hirta
160	Blue Flag Iris	Iris versicolor
128	Great Blue Lobelia	Lobelia siphilica
150	Swamp Milkweed	Asclepias incarnata
128	White Turtlehead	Chelone glabra
128	Queen of the Prairie	Filipendula rubra
128	Cardinal Flower	Lobelia cardinalis
128	Marsh Phlox	Phlox glaberrima
150	Little Bluestem	Schizachyrium scoparium
128	Virginia Wild Rye	Elymus virginicus
128	Nodding Onion	Allium cernuum
128	Culver's Root	Veronicastrum virginicum
128	Sweet Flag	Azoreum calicatum

2,816 S.F., plugs planted 12" o.c.  
Bio-infiltration area will be constructed per City of Madison and Wisconsin Department of Natural Resources specifications.



**City of Madison - Landscape Worksheet**  
Project Location Address: \_\_\_\_\_  
Name of Project: \_\_\_\_\_  
Owner/Client: \_\_\_\_\_  
Contact Name: \_\_\_\_\_  
Contact Phone: \_\_\_\_\_  
Contact Email: \_\_\_\_\_

**Landscape Calculation and Summary**  
Total square footage of developed area: 244,000 (40,450 Phase I)  
Total square footage of undeveloped area: \_\_\_\_\_  
Total square footage of total site: \_\_\_\_\_  
Total square footage of landscape area: \_\_\_\_\_  
Total square footage of landscape area (Phase I): \_\_\_\_\_

**Planting Schedule**  
Phase 1 Total Number of Plants Provided: 696  
Overall Total Number of Plants Provided: 3,984

Plant Type/Element	Minimum Size at Installation	Phase 1 Quantity	Phase 1 Points	Overall Phase 1 Quantity	Overall Phase 1 Points
Overstory deciduous tree	3"-12" inch caliper	35	9	44	58
Overstory evergreen tree	3"-12" inch caliper	15	0	0	18
Overstory tree	3" total	15	27	405	32
Shrub, deciduous	18" or 3-pk in caliper	2	103	206	433
Shrub, evergreen	18" or 3-pk in caliper	3	11	33	64
Ornamental grass	18" or 3-pk in caliper	2	4	8	73
Ornamental shrub	18" or 3-pk in caliper	4	0	0	0
Perennial	4" or 10" in caliper	0	0	0	0
<b>Sub Totals</b>				<b>696</b>	<b>3,984</b>



**Landscape Services**  
6433 Nesbitt Road  
Madison, WI 53719  
Ph: 608.845.3230 Fx: 608.845.6339  
www.barnesinc.net

Consultants:  
Client:

**Smart Motors - Used Cars**  
Odana Road  
Madison, WI

**LANDSCAPING PLAN - PHASE I**

TO OBTAIN LOCATION OF PARTICIPANTS' UNDERGROUND FACILITIES BEFORE YOU DIG IN WISCONSIN  
**CALL DIGGERS HOTLINE 1-800-242-6911 TOLL FREE**  
TOD (FOR THE HEARING IMPAIRED) (800)542-2289  
WIS. STATUTE 182.0175 (1874) REQUIRES MIN. OF 3 WORK DAYS NOTICE BEFORE YOU EXCAVATE

**Notes:**

This document is the property of Barnes Inc. and may not be distributed without the express consent of Barnes Inc.

Approved for Construction by owner: \_\_\_\_\_ Date: \_\_\_\_\_  
Accepted by Barnes Inc.: \_\_\_\_\_ Date: \_\_\_\_\_

Date: 4/29/13 3. 2/24/14  
Revised: 1. 6/27/13 4.  
2. 11/11/13

Sheet: \_\_\_\_\_ Scale: 1" = 30'-0"

**L-1.0**



LIGHTING FIXTURE SCHEDULE					
TYPE	MANUFACTURER	CATALOG NO.	DESCRIPTION	QUANTITY	LAMPS
LSI	EXISTING	XGB3-FT-LED-176-450 CW-UE-WHT	TWIN FORWARD THROW WITH FLAT GLASS LENS 20' ROUND STEEL POLE ON 2' CONCRETE BASE ARROW INDICATES DIRECTION OF ROTATED OPTIC	6	21,600 LM LED
LSI	EXISTING	XGB3-FT-LED-176-450 CW-UE-WHT	TWIN FORWARD THROW WITH FLAT GLASS LENS 28' ROUND STEEL POLE ON 2' CONCRETE BASE ARROW INDICATES DIRECTION OF ROTATED OPTIC	6	21,600 LM LED
LSI	EXISTING	XGB3-FT-LED-128-450 CW-UE-WHT	WALL MTD FORWARD THROW WITH FLAT GLASS LENS MOUNTED 16 FEET ABOVE FINISHED GRADE	4	15,300 LM LED

- NOTES
- ARROWS INDICATE ROTATION OF OPTICS WITHIN THE FIXTURE HOUSING.
  - ALL POLE MOUNTED FIXTURES SHALL HAVE FULL CUT-OFF OPTICS WITH FLAT GLASS LENSES.

POINT BY POINT CALCULATION SUMMARY				
AREA NAME	AREA DESCRIPTION	AVERAGE	MAXIMUM	MINIMUM
SALES LOT +	PARKING LOT FOR VEHICLE SALES HORIZONTAL CALCULATION ON PAVEMENT VALUES LISTED ARE MAINTAINED FOOTCANDLES	3.1	20.0	0.0

POINTS INDICATED WITH # AND GRAY ARE SHOWN FOR REFERENCE ONLY AND ARE NOT INCLUDED IN THE CALCULATION ABOVE.

**DESIGN CRITERIA**

THIS ENTIRE LOT QUALIFIES AS AN OUTDOOR MERCHANDISING AREA ACCORDING TO MADISON CITY ORDINANCE 10.085

"10.085(4)(c) FOR AN OUTDOOR MERCHANDISING AREA, THE MAXIMUM INITIAL ILLUMINATION LEVEL IN 75% OF THE LOT SHALL NOT EXCEED 20 FOOTCANDLES. A CONTIGUOUS AREA NOT TO EXCEED 25% OF THE LOT MAY BE ILLUMINATED TO A LEVEL WHICH SHALL NOT EXCEED 40 FOOTCANDLES."

ALL LIGHTING FIXTURES INSTALLED SHALL UTILIZE CLEAR FLAT LENSES WITH FULL CUT-OFF OR SHIELDED OUTPUT.

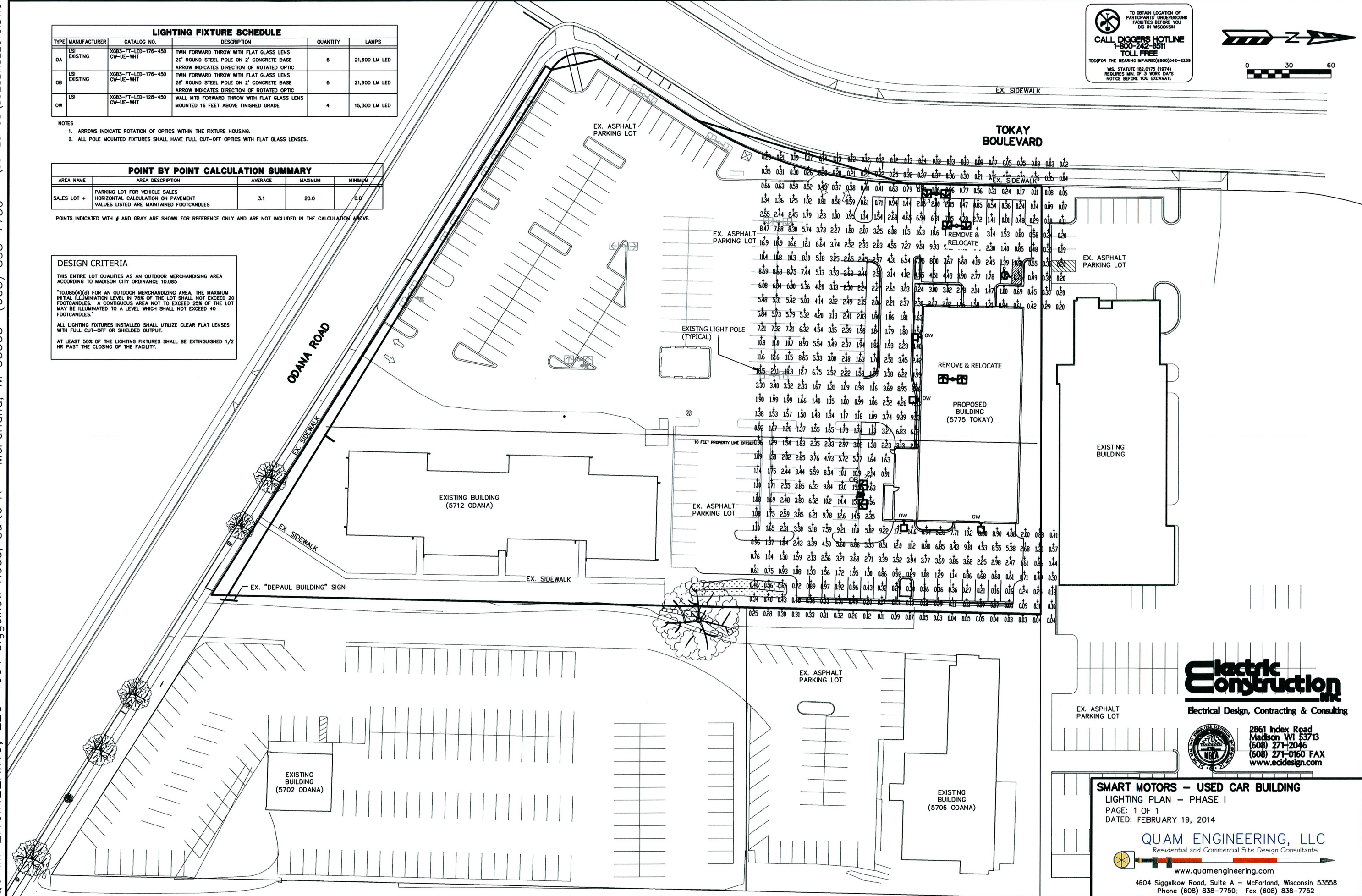
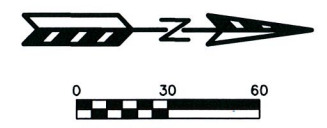
AT LEAST 50% OF THE LIGHTING FIXTURES SHALL BE EXTINGUISHED 1/2 HR PAST THE CLOSING OF THE FACILITY.

TO OBTAIN LOCATION OF PARTICIPANTS' UNDERGROUND FACILITIES BEFORE YOU DIG IN WISCONSIN

**CALL DIGGERS HOTLINE**  
1-800-242-8511  
TOLL FREE

TDD(FOR THE HEARING IMPAIRED) 800/242-2289

WIS. STATUTE 182.0175 (1974)  
REQUIRES MIN. OF 3 WORK DAYS  
NOTICE BEFORE YOU EXCAVATE



**Electric Construction**

Electrical Design, Contracting & Consulting

2861 Index Road  
Madison WI 53713  
(608) 271-2046  
(608) 271-0160 FAX  
www.ecdesign.com

**SMART MOTORS - USED CAR BUILDING**

LIGHTING PLAN - PHASE I

PAGE: 1 OF 1  
DATED: FEBRUARY 19, 2014

**QUAM ENGINEERING, LLC**  
Residential and Commercial Site Design Consultants

www.quamengineering.com

4604 Siggelkow Road, Suite A - McFarland, Wisconsin 53558  
Phone (608) 838-7750; Fax (608) 838-7752



# LED AREA LIGHTS - XGB3 176 LED



## LUMINAIRE ORDERING INFORMATION

TYPICAL ORDER EXAMPLE: **XGB3 FTA LED 176 350 CW UE WHT PCI120 21**

Prefix	Distribution	Light Source	# of LEDs	Drive Current	Color Temperature	Input Voltage	Finish	Options
XGB3 <sup>1</sup> - LED Greenbriar	FT - Forward Throw FTA - Forward Throw Automotive 3 - Type III 5 - Type V	LED	176	350 - 350mA 450 - 450mA	CW - Cool White NW - Neutral White	UE - Universal Voltage (120-277) 347-480	BLK - Black BRZ - Bronze GPT - Graphite MSV - Metallic Silver PLP - Platinum Plus SVG - Satin Verde Green WHT - White	8BK - 8" Bracket (S and D180 only) PCI 120 - 120v Button-Type Photocell PCI 208 - 208v Button-Type Photocell PCI 240 - 240v Button-Type Photocell PCI 277 - 277v Button-Type Photocell PCI 347 - 347v Button-Type Photocell TB - Terminal Block  Color Decals 45 - Light Gold 20 - Charcoal Metallic 55 - Black 94 - Blue Metallic 59 - Dark Green 51 - Dark Red 21 - Tomato Red 50 - White 700 - Aztec Silver Metallic

## LUMINAIRE EPA CHART<sup>2</sup> - XGB3 176 LED

	8" Bracket	12" Bracket
Single	2.3	2.4
D180°	4.7	4.8
D90°		4.7
T90°	12" Bracket	7.2
TN120°	Required	7.3
Q90°		8.8

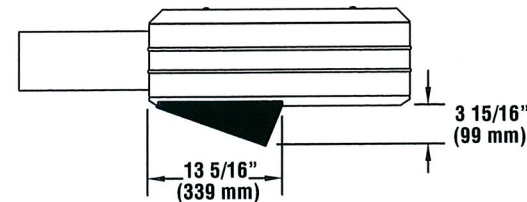
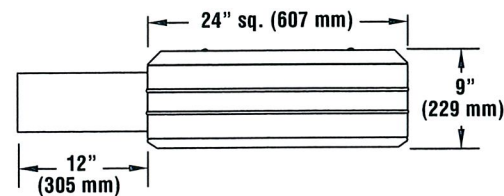
## ACCESSORY ORDERING INFORMATION (Accessories are field installed)

Description	Order Number
XGB3-176 - HSS - House Side Shield (Black only) <sup>2</sup>	482002 BLK
XGB3-176 - LSS - House Side Shield Left Side (Black only) <sup>2</sup>	482002 BLK
XGB3-176 - RSS - House Side Shield Right Side (Black only) <sup>2</sup>	482002 BLK
RPP2 - Round Pole Plate	162914BLK
BKS-BO-WM-* - CLR - Wall Mount Plate	123111CLR
BKA-BO-RA-8-CLR - Radius Arm	169010CLR
BKU-BO-S-19-CLR - Upsweep Bracket for round or square poles	144191CLR

### NOTES:

- 1 - Use with 5" traditional drilling pattern
- 2 - House Side Shield adds to fixture EPA. Consult factory.

## DIMENSIONS



House Side Shield (482002BLK)

# LED AREA LIGHTS - XGB3 176 LED



US patent D574994 & 7,828,456 and MX patent 29631 and US & Int'l. patents pending



Shown with optional decal striping

Crossover LED Lighting

## lighting facts<sup>®</sup>

A Program of the U.S. DOE

Light Output (Lumens)	<b>21617</b>
Watts	<b>255</b>
Lumens per Watt (Efficacy)	<b>85</b>
Color Accuracy Color Rendering Index (CRI)	<b>69</b>

Light Color  
(Nominal Color Temperature 2400K)

5087 (Daylight)

All results are according to IESNA LM-79-2009: Approved Method for the Electrical and Photometric Testing of Solid-State Lighting. The U.S. Department of Energy (DOE) verifies product test data and results.

Visit [www.lightingfacts.com](http://www.lightingfacts.com) for the Label Reference Guide.

Registration Number: KGGH-PJ0085 (12/12/2011)  
Model Number: XGB3 FT LED 176 450 CW UE  
Type: Outdoor area/roadway fixture

## LIGHT OUTPUT - XGB3 128

	# of LEDs	Lumens (Nominal)				
		Type 3	Type 5	Type FT	Type FTA	
Cool White	350 mA	176	17200	16600	18300	20600
	450 mA	176	20700	20000	21600	24900
Neutral White	350 mA	176	14600	14500	15800	18000
	450 mA	176	17600	17400	18900	21600

\*Preliminary Data

This product, or selected versions of this product, meet the standards listed below. Please consult factory for your specific requirements.



**SMARTTEC™ THERMAL CONTROL** - Sensors in both optical unit and driver enclosure reduce drive current when ambient temperatures exceed 50°C. Current is lowered in imperceptible 5% increments every 5 minutes until safe operating temperature is reached.

**EXPECTED LIFE** - Minimum 60,000 hours to 100,000 hours depending upon the ambient temperature of the installation location. See LSI web site for specific guidance.

**LEDS** - Select high-brightness LEDs in Cool White (5250°K nominal) or Neutral White (4100°K nominal) color temperature, 70 CRI (nominal).

**DISTRIBUTION/PERFORMANCE** - Types 3, 5, FT and FTA available. Reflectors are field rotatable. Exceptional uniformity with full cutoff creates bright environment at lower light levels.

**HOUSING** - Square, die-formed aluminum. Fully enclosed weather-tight housing contains factory prewired drivers and field connections.

**TOP-ACCESS COVER** - Tethered top-access cover provides ease of installation and allows for easy driver access. Four captive stainless-steel fasteners secure the top-access cover to the housing.

**OPTICAL UNIT** - Clear tempered optical grade flat glass lens sealed to aluminum housing creates an IP67 rated, sealed optical unit. Pressure stabilizing breather allows super-tight IP67 protection while preventing temperature cycling from building up internal pressures and vacuums that can stress optical unit seals and components.

**FIELD ROTATABLE OPTICS** - Optical unit can be easily field rotated in 90° increments. Directional arrow on optics allows alignment without the unit being energized.

**MOUNTING** - 2-1/2" x 5-3/8" x 12" extruded aluminum arm mounting bracket shipped standard. 8" bracket available for single or D180 configurations, but must be ordered from the Options column of ordering chart. Use with 5" traditional drilling pattern on LSI steel round, square and round tapered poles. Round Pole Plate (RPP2) required for mounting to 3"-5" round poles. (See Accessory Ordering Information chart.)

**ELECTRICAL** - Two-stage surge protection (including separate surge protection built into electronic driver) meets IEEE C62.41.2-2002, Scenario 1, Location Category C. Available with universal voltage power supply 120-277VAC (UE - 50/60Hz input), and 347-480VAC. Optional button-type photocells (PCI) are available in 120, 208, 240, 277 or 347 volt (supply voltage must be specified). Fixture Watts: 350 mA - 195, 450 mA - 260 nominal.

**DRIVERS** - Available in 350mA and 450mA drive currents (Drive currents are factory programmed). Components are fully encased in potting material for IP65 moisture resistance. Driver complies with FCC 47 CFR part 15 RFI/EMI standard.

**OPERATING TEMPERATURE** - -40°C to +50°C (-40°F to +122°F).

**FINISH** - Fixtures are finished with LSI's DuraGrip® polyester powder coat finishing process. The DuraGrip finish withstands extreme weather changes without cracking or peeling, and is guaranteed for five full years. Standard colors include bronze, black, platinum plus, graphite, satin verde green, metallic silver and white. Meets requirements of ASTM B117 1000-hour salt fog and ASTM G155 1000-hour Xenon Arc UV tests (supersedes G53 UVB313).

**DECAL STRIPING** - LSI offers optional color-coordinated decals in 9 standard colors to accent the fixture. Decals are guaranteed for five years against peeling, cracking, or fading.

**WARRANTY** - LSI LED fixtures carry a limited 5-year warranty.

**PHOTOMETRICS** - Application layouts are available upon request. Contact LSI Applications Group at [lighting.apps@lsi-industries.com](mailto:lighting.apps@lsi-industries.com)

**SHIPPING WEIGHT (in carton)** - Fixture - 44.5 lbs (20 kg)  
Arm - 5 lbs. (2kg) arm

**LISTING** - ETL listed to U.S. and Canadian safety standards. Suitable for wet locations.



# LED AREA LIGHTS - (XGB3) 128



## LUMINAIRE ORDERING INFORMATION

TYPICAL ORDER EXAMPLE: **XGB3 5 LED 128 350 CW UE WHT VCM ES**

Prefix	Distribution	Light Source	# of LEDs	Drive Current	Color Temperature	Input Voltage	Finish	Optional Controls	Optional Sensor/Options
XGB3 <sup>1</sup> - LED Greenbriar	FT - Forward Throw FTA - Forward Throw Automotive 3 - Type III 5 - Type V	LED	128	350 - 350mA 450 - 450mA	CW - Cool White NW - Neutral White	UE - Universal Voltage (120-277) 347-480	BLK - Black BRZ - Bronze GPT - Graphite MSV - Metallic Silver PLP - Platinum Plus SVG - Satin Verde Green WHT - White	<b>Virtinet Wireless Network</b> (requires a Ventura controller/Malibu link) (blank) - None VCM - Standard (revenue grade) VCMB - Basic VCMH - Standard (Host) VCMBH - Basic (Host) DIM - 0-10 volt dimming (required for satellite fixtures)	<b>Sensor</b> ES <sup>3</sup> - External Sensor IMS <sup>4</sup> - Integral Motion Sensor PCI 120 - 120v Button-Type Photocell PCI 208 - 208v Button-Type Photocell PCI 240 - 240v Button-Type Photocell PCI 277 - 277v Button-Type Photocell PCI 347 - 347v Button-Type Photocell
							<b>Optional Color Decals</b> 45 - Light Gold 20 - Charcoal Metallic 55 - Black 94 - Blue Metallic 59 - Dark Green 51 - Dark Red 21 - Tomato Red 50 - White 700 - Aztec Silver Metallic	<b>Stand-Alone Control</b> (blank) - None DIM <sup>2</sup> - 0-10V Dimming (from external signal) BLS <sup>2</sup> - Bi-level Switching (from external signal - requires 120-277V controls system voltage)	<b>Options</b> 8BK - 8" Bracket (S and D180 only) TB - Terminal Block

### LUMINAIRE EPA CHART<sup>2</sup> - XGB3 128

	8" Bracket	12" Bracket
	2.1	2.3
	4.3	4.6
		4.1
		6.7
		6.8
		8.2

Note: House Side Shield adds to fixture EPA. Consult Factory.

### ACCESSORY ORDERING INFORMATION

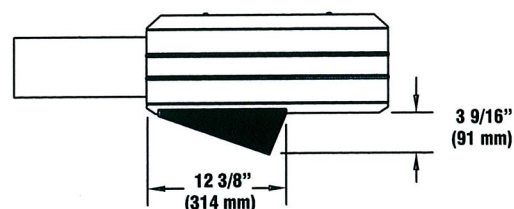
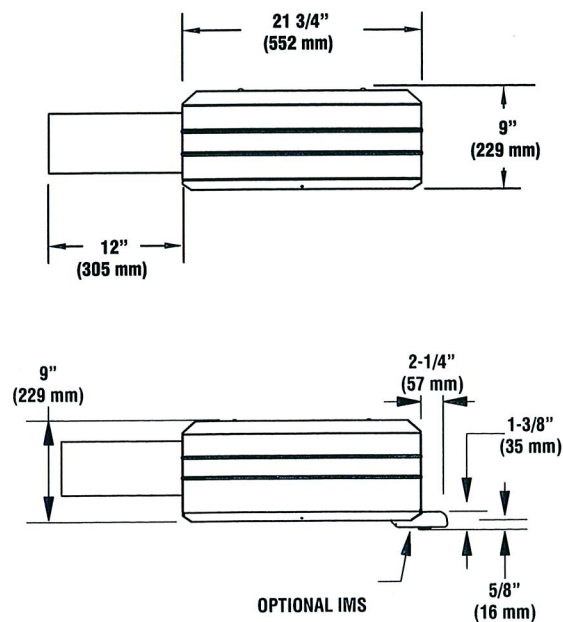
(Accessories are field installed)

Description	Order Number	Description	Order Number
XGB3-128 - HSS - House Side Shield (Black only) <sup>5</sup>	465915 BLK	ROSB120 - WL Remote Box with 120V Occupancy Sensor	C/F <sup>6</sup>
XGB3-128 - LSS - House Side Shield Left Side (Black only) <sup>5</sup>	465915 BLK	ROSB277 - WL Remote Box with 277V Occupancy Sensor	C/F <sup>6</sup>
XGB3-128 - RSS - House Side Shield Right Side (Black only) <sup>5</sup>	465915 BLK	RPSB120 - Wet Location Remote Box with 120V External Photocell	C/F <sup>6</sup>
RPP2 - Round Pole Plate	162914BLK	RPSB208-277 - Wet Location Remote Box with 208-277V External Photocell	C/F <sup>6</sup>
BKS-BO-WM-* - CLR - Wall Mount Plate	123111CLR	PMOS120 - 120V Pole-Mount Occupancy Sensor	518030CLR <sup>7</sup>
BKA-BO-RA-8-CLR - Radius Arm	169010CLR	PMOS208/240 - 208, 240V Pole-Mount Occupancy Sensor	C/F <sup>7</sup>
BKU-BO-S-19-CLR - Upsweep Bracket for round or square poles	144191CLR	PMOS277 - 277V Pole-Mount Occupancy Sensor	518029CLR <sup>7</sup>

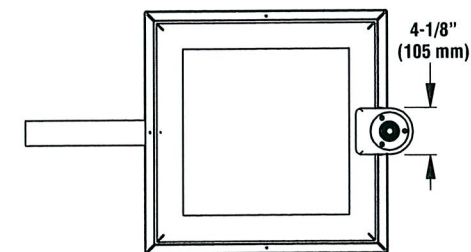
#### FOOTNOTES:

- Use with 5" traditional drilling pattern
- IMS, DIM and BLS are not compatible.
- Do not specify for satellite units.
- Not compatible with Virtinet wireless systems, DIM or BLS.
- House Side Shield adds to fixture EPA. IMS Sensor not available with LSS & RSS. HSS must be mounted opposite of IMS. Consult factory.
- Includes VCM. To be used in conjunction with VCM option in fixture. Consult factory.
- To be used in conjunction with any of the VCM control modules and ES sensor option in fixture.

### DIMENSIONS



House Side Shield (465915 BLK)



# LED AREA LIGHTS - (XGB3) 128



US patent D574994 & 7,828,456 and MX patent 29631 and US & Int'l. patents pending



Shown with optional decal striping

**SMARTTEC™ THERMAL CONTROL** - Sensors in both optical unit and driver enclosure reduce drive current when ambient temperatures exceed 50°C. Current is lowered in imperceptible 5% increments every 5 minutes until safe operating temperature is reached.

**OCCUPANCY SENSING (IMS)** - Optional integral passive infrared motion sensor activates switching of luminaire light levels. High level light is activated and increased to full bright in 1-2 seconds upon detection of motion. Low light level (30% maximum drive current) is activated when target zone is absent of motion activity for ~2 minutes and ramps down (10-15 seconds) to low level to allow eyes time to adjust. Sensor is located on the front of optical assembly and rotates with the optic. Sensor optic has a detection cone of approximately 45°. Examples of detection - occurs 30' out from a 30' mounting height pole; occurs 20' out from a 20' mounting height pole.

**ENERGY SAVING CONTROL OPTIONS** - DIM - 0-10 volt dimming enabled with controls by others. BLS - Bi-level switching responds to external line voltage signal from separate 120-277V controller or sensor (by others), with low light level decreased to 30% maximum drive current.

**EXPECTED LIFE** - Minimum 60,000 hours to 100,000 hours depending upon the ambient temperature of the installation location. See LSI web site for specific guidance.

**LEDS** - Select high-brightness LEDs in Cool White (5250°K nominal) or Neutral White (4100°K nominal) color temperature, 70 CRI (nominal).

**DISTRIBUTION/PERFORMANCE** - Types 3, 5, FT and FTA available. Reflectors are field rotatable.

**HOUSING** - Square, die-formed aluminum. Fully enclosed weather-tight housing contains factory prewired drivers and field connections.

**TOP-ACCESS COVER** - Tethered top-access cover provides ease of installation and allows for easy driver access. Four captive stainless-steel fasteners secure the top-access cover to the housing.

**OPTICAL UNIT** - Clear tempered optical grade flat glass lens sealed to aluminum housing creates an IP67 rated, sealed optical unit (includes pressure stabilizing breather). Optical unit can be easily field rotated in 90° increments. Directional arrow on optics allows alignment without the unit being energized.

**MOUNTING** - 2-1/2" x 5-3/8" x 12" extruded aluminum arm mounting bracket shipped standard. Use with 5" traditional drilling pattern. Round Pole Plate (RPP2) required for mounting to 3"-5" round poles. (See Accessory Ordering Information chart.)

**ELECTRICAL** - Two-stage surge protection (including separate surge protection built into electronic driver) meets IEEE C62.41.2-2002, Location Category C. Available with universal voltage power supply 120-277VAC (UE - 50/60Hz input), and 347-480VAC. Fixture Watts: 350 mA - 143, 450 mA - 188 nominal.

**DRIVER** - Available in 350mA and 450mA drive currents (Drive currents are factory programmed). Components are fully encased in potting material for IP65 moisture resistance. Driver complies with FCC 47 CFR part 15 RFI/EMI standard.

**OPERATING TEMPERATURE** - -40°C to +50°C (-40°F to +122°F).

**FINISH** - Fixtures are finished with LSI's DuraGrip® polyester powder coat finishing process. The DuraGrip finish withstands extreme weather changes without cracking or peeling, and is guaranteed for five full years.

**DECAL STRIPING** - LSI offers optional color-coordinated decals in 9 standard colors to accent the fixture. Decals are guaranteed for five years against peeling, cracking, or fading.

**WARRANTY** - LSI LED fixtures carry a limited 5-year warranty.

**PHOTOMETRICS** - Application layouts are available upon request. Contact LSI Applications Group at [lighting.apps@lsi-industries.com](mailto:lighting.apps@lsi-industries.com)

**SHIPPING WEIGHT (in carton)** - 32 lbs (14.5 kg) fixture; 5 lbs. (2kg) arm

**LISTING** - ETL listed to U.S. and Canadian safety standards. Suitable for wet locations.

Crossover LED Lighting

## lighting facts®

A Program of the U.S. DOE

Light Output (Lumens)	15348
Watts	190
Lumens per Watt (Efficacy)	81
Color Accuracy Color Rendering Index (CRI)	76
Light Color Correlated Color Temperature (CCT)	5655 (Daylight)

2700K Warm White
3000K Bright White
4500K Daylight
6500K

All results are according to IESNA LM-79-2008: Approved Method for the Electrical and Photometric Testing of Solid-State Lighting. The U.S. Department of Energy (DOE) verifies product test data and results.

Visit [www.lightingfacts.com](http://www.lightingfacts.com) for the Label Reference Guide.

Registration Number: KGGN-WY6XYS (11/23/2011)  
Model Number: XGB3-FT-LED-128-450-CW-UE  
Type: Outdoor area/roadway fixture

		LIGHT OUTPUT - XGB3 128				
		# of LEDs	Lumens (Nominal)			
		Type 3	Type 5	Type FT	Type FTA	
Cool White	350 mA	128	12369	10500	12700	12700
	450 mA	128	14801	12600	15300	15600
Neutral White	350 mA	128	11668	10100	11800	13342
	450 mA	128	13835	12700	13700	15700

This product, or selected versions of this product, meet the standards listed below. Please consult factory for your specific requirements.



Project Name SMART MOTORS Fixture Type OW  
Catalog # XGB3-FT-128-450-CW-UE-WHT BKS-BO-WM-WHT-CLR

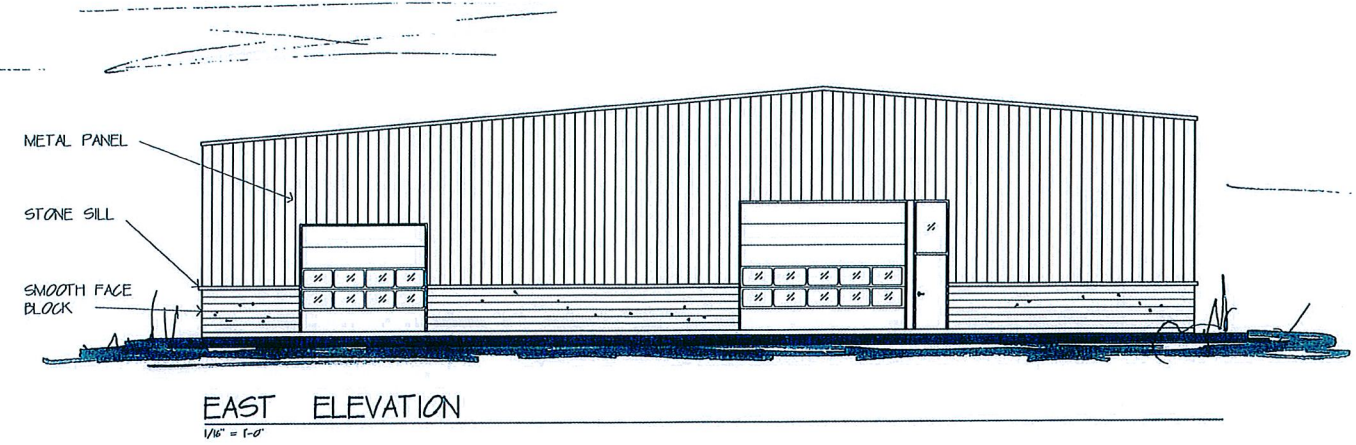
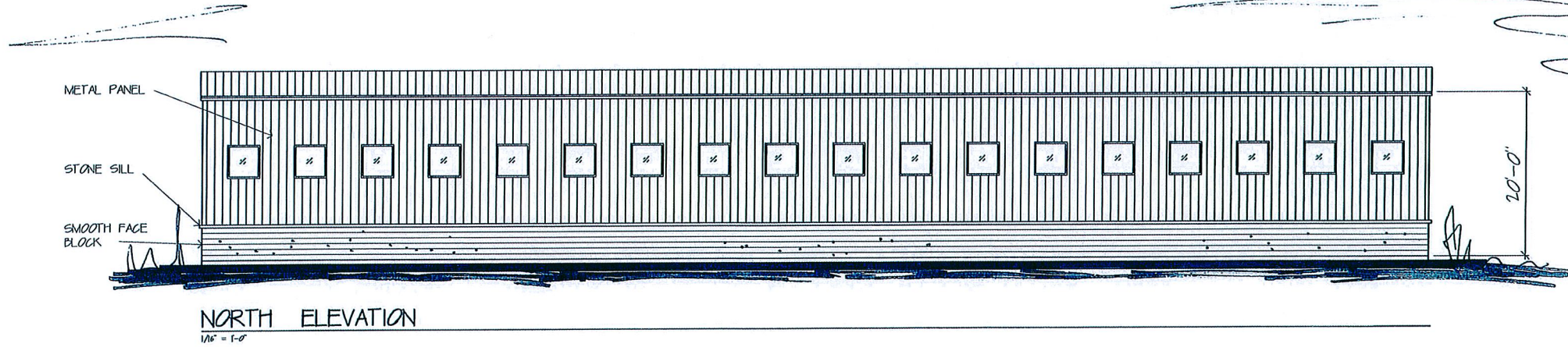
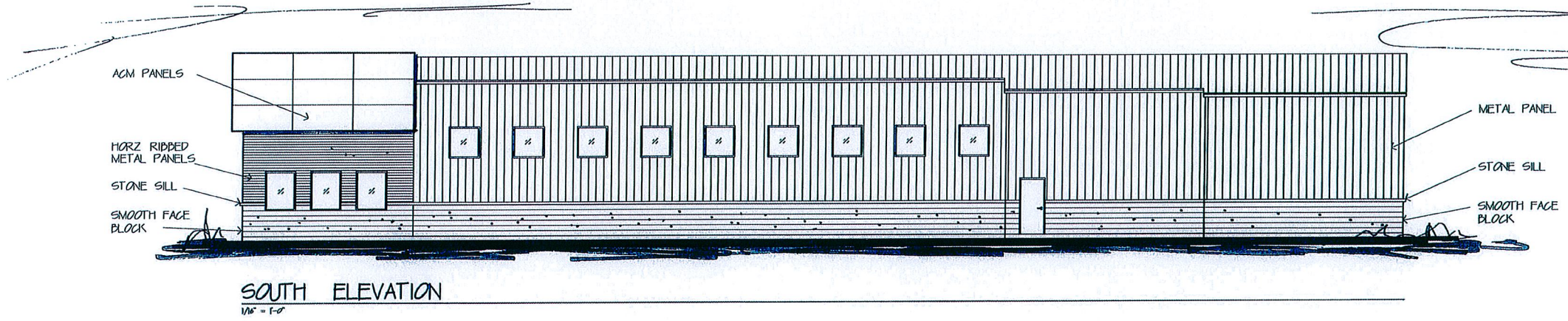
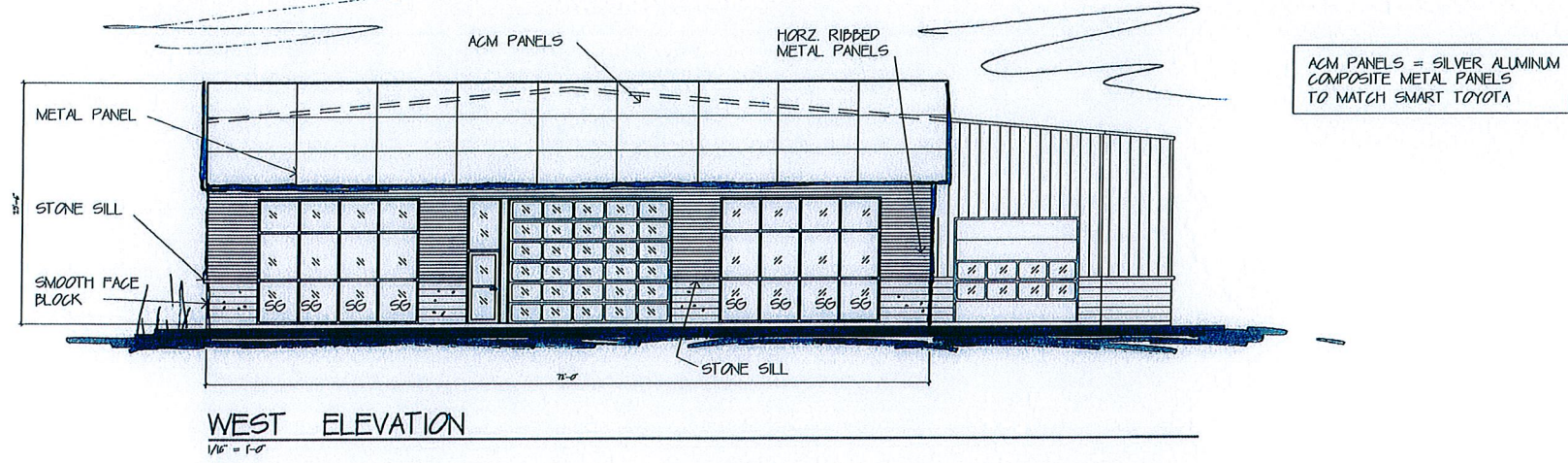
01/21/14  
© 2014  
LSI INDUSTRIES INC



Project Name SMART MOTORS Fixture Type OW  
Catalog # XGB3-FT-128-450-CW-UE-WHT BKS-BO-WM-WHT-CLR

01/21/14  
© 2014  
LSI INDUSTRIES INC





REVISIONS	
 <b>SMART MOTORS</b>	
<b>Smart Motors</b> New Car Prep Building 5708 Odana Road Madison WI, 53716	
 <b>Kenneith Sullivan CO</b> DESIGN BUILD / GENERAL CONTRACTORS P.O. BOX 259463 1314 EMIL ST. 608-257-2889 MADISON, WI 53725-9463 FAX 608-257-2806	
DRAWING NAME ELEVATIONS	DRAWN BY: JIMT DATE: 11-20-19
SHEET <b>A-2.0</b> PROJ. # 219-200	