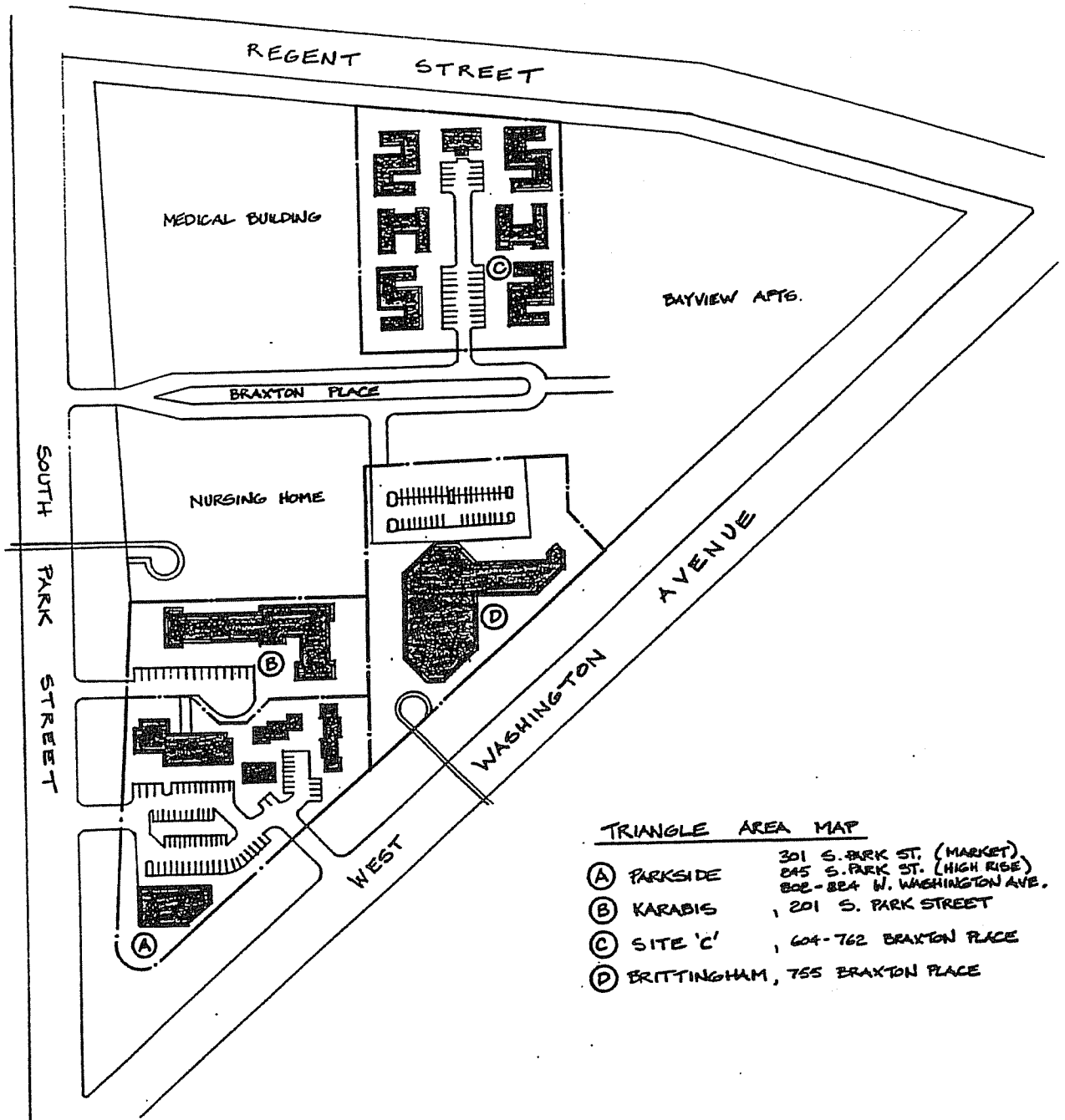


GENERAL INFORMATION TRIANGLE

Triangle Management Office
 702 Braxton Pl.
 Madison, WI 53715
 (608) 266-4381
 Fax (608) 261-9167



WI 3-1 "C" Site

Gay Braxton Apartments

**604-762 Braxton Pl.
Madison, WI 53715**

Development #WI39P003001
Constructed in 1965
6 Buildings – 2 six-units and 4 twelve-units

58 elderly units located on Braxton Place
31- Efficiency units of approximately 400 square feet each
23 -1 bedroom units of approximately 505 square feet each
4 – 2 bedroom units of approximately 750 square feet each

Deprogrammed units:

- Police office located at 610 Braxton Pl.
- Triangle Community Ministry located at 762 Braxton Pl.

Utilities included:

- Gas
- Water/sewer

Amenities include:

- Off street parking
- Cat or small dog permitted (additional deposit required)
- Private entrances
- Police office on site
- Laundry facilities
 - Between 612/616 Braxton Pl.
 - Between 648/654 Braxton Pl.

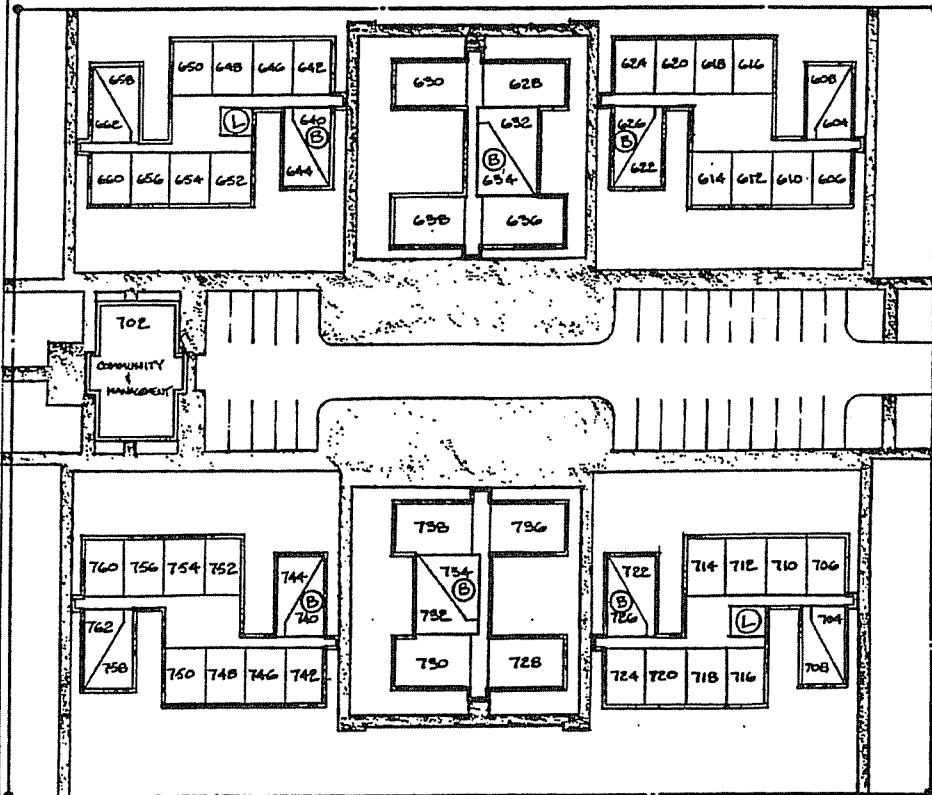
Schools:

Elementary – Franklin/Randall
Middle – Hamilton
High – West

Aldersperson & District:

District 13
Isadore Knox, Jr.
(608) 255-4302
district13@cityofmadison.com

REGENT STREET



BRAXTON PLACE

SOUTH PARK STREET

- KEY
- ⓑ BOILER AT BASEMENT
 - Ⓛ LAUNDRY



WI 3-6 Brittingham Apartments

**755 Braxton Pl.
Madison, WI 53715**

Development #WI39P003006
Constructed in 1976
1 Building – ten stories high

163 elderly units located on Braxton Place
162 -1 bedroom units ranging from 505-545 square feet each
1 --- 2 bedroom unit of approximately 750 square feet (#B102)

Deprogrammed unit:

-Security office located at #B102

Utilities included:

-Electric
-Gas
-Water/sewer

Amenities include:

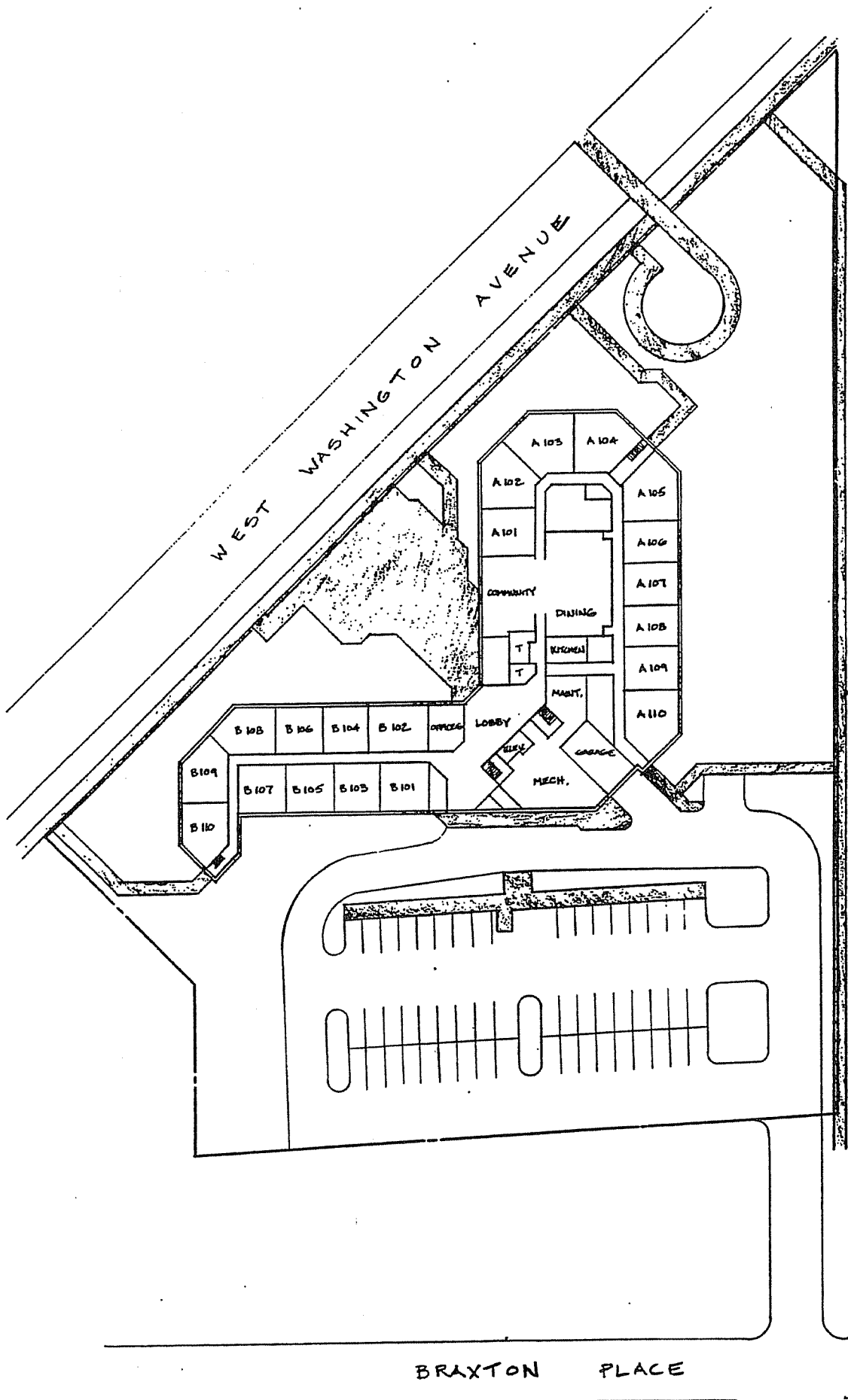
-Off street parking
-Elevator
-Cat permitted (additional deposit required)
-11 accessible units on the first floor
-Security office located in building
-On-site meal program
-Parish Nurse on-site
-Laundry facilities
 1st floor 2 washers/2 dryers
 4th floor 2 washers/2 dryers
 7th floor 2 washers/2 dryers

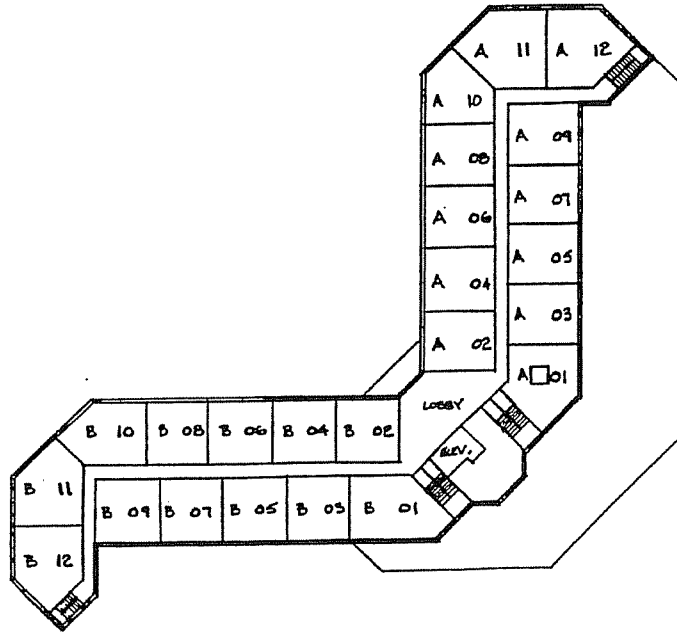
Schools:

Elementary – Franklin/Randall
Middle – Hamilton
High – West

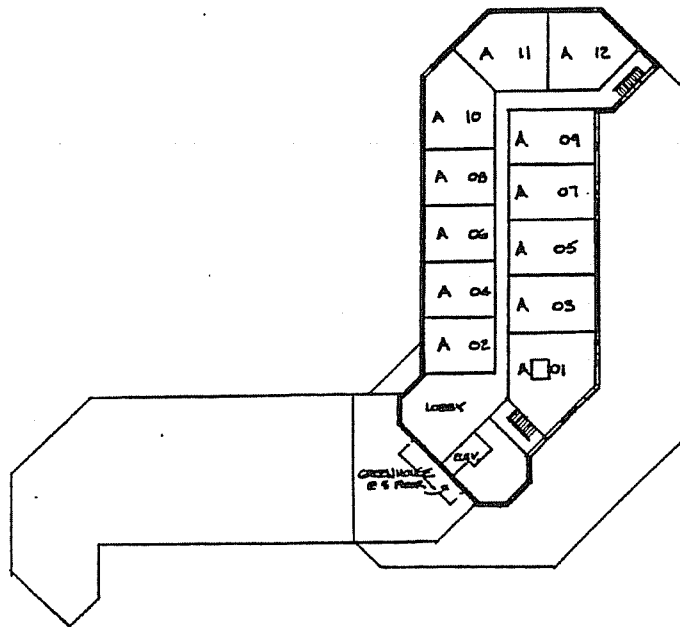
Alderson & District:

District 13
Isadore Knox, Jr.
(608) 255-4302
district13@cityofmadison.com





FLOORS 2 THRU 4



FLOORS 5 THRU 10

UNIT DESIGNATION = FLOOR NUMBER

Karabis Apartments

**201 S. Park St.
Madison, WI 53715**

WHEDA

Constructed in 1977

1 Building – one story high

20 units for young severely disabled tenants located on South Park Street

2 --1 bedroom units of approximately 560 square feet each

16 -2 bedroom units of approximately 750 square feet

2 -- 3 bedroom units of approximately 1100 square feet

Utilities included:

-Electric

-Gas

-Water/sewer

Amenities include:

-All units are barrier free/wheelchair accessible

-Free Lifeline services

-Off street parking

-Private entrances

-Cat or small dog permitted (additional deposit required)

-Laundry facilities

Schools:

Elementary – Franklin/Randall

Middle – Hamilton

High – West

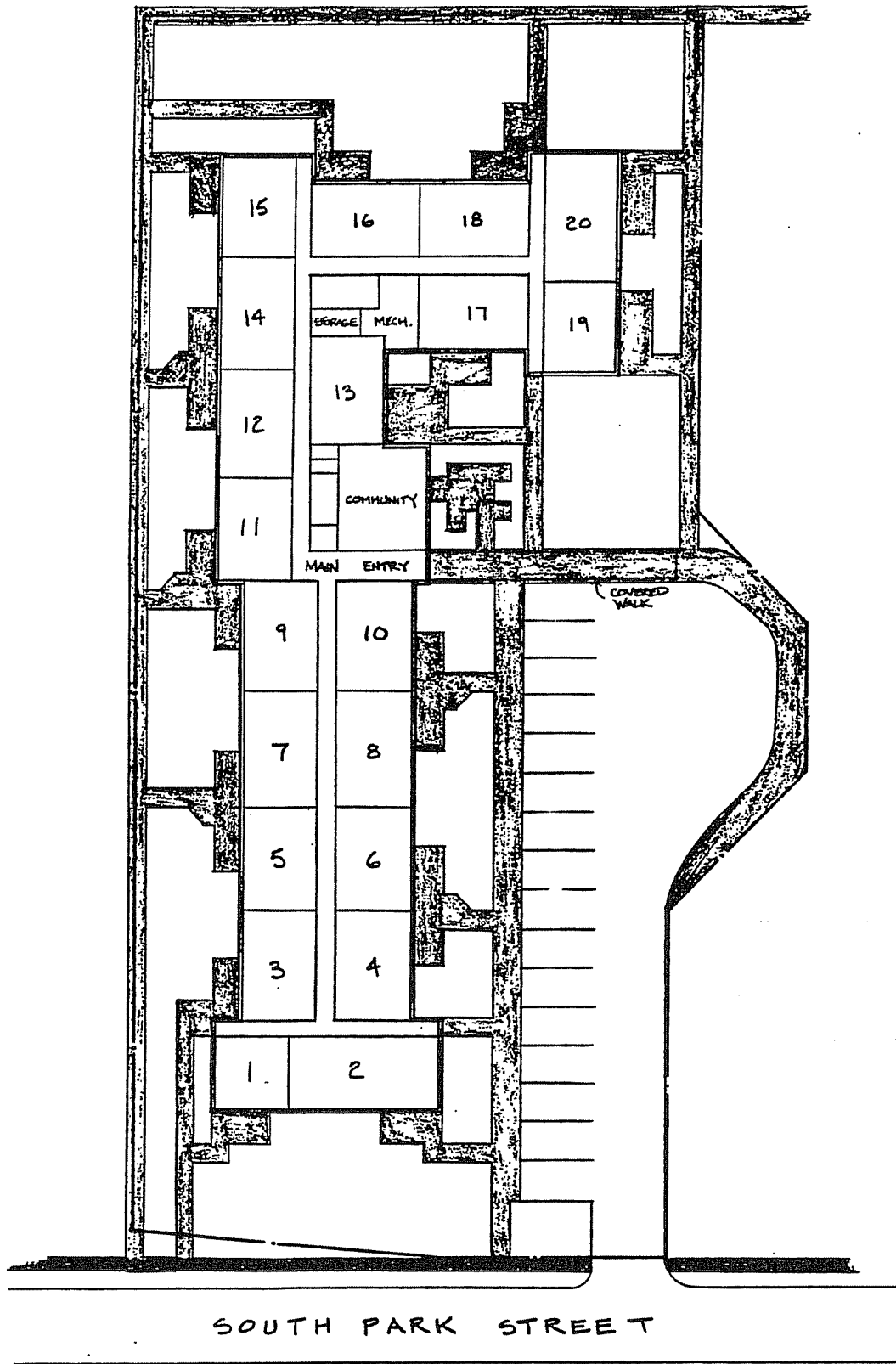
Alderson & District:

District 13

Isadore Knox, Jr.

(608) 255-4302

district13@cityofmadison.com



NO SCALE 

Parkside Highrise Apartments

245 S. Park St.
Madison, WI 53715

WHEDA
Constructed in 1978
1 Building – eight stories high

83 elderly units located on South Park Street
82 -1 bedroom units of approximately 510 square feet each
1 --2 bedroom unit of approximately 750 square feet

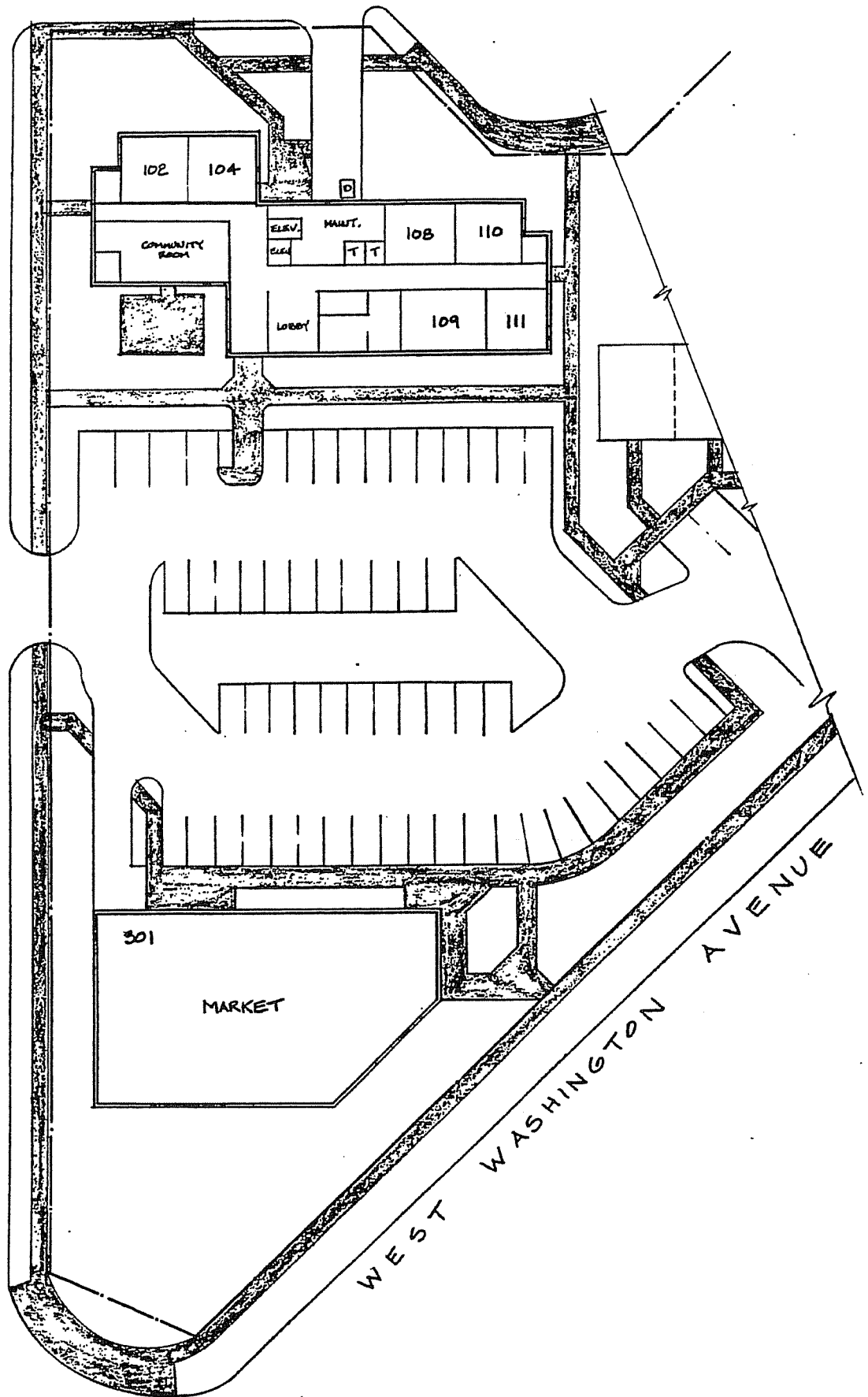
Deprogrammed unit:
-Resident Association office #109

Utilities included:
-Electric
-Gas
-Water/sewer

Amenities include:
-7 wheelchair accessible units (one on each floor except the 1st floor)
-Off street parking
-Cat permitted (additional deposit required)
-Community room located on the first floor
-Laundry facilities
 2nd floor 1 washer/1 dryer
 5th floor 1 washer/1 dryer
 7th floor 1 washer/1 dryer

Schools:
Elementary – Franklin/Randall
Middle – Hamilton
High – West

Aldersperson & District:
District 13
Isadore Knox, Jr.
(608) 255-4302
district13@cityofmadison.com



Parkside Townhouse Apartments

**802-824 W. Washington Ave.
Madison, WI 53715**

WHEDA

Constructed in 1978

3 Buildings – 1 two-unit, 1 four-unit and 1 six-unit townhouse buildings

12 family units located on South Park Street

8 -2 bedroom units of approximately 750 square feet each

4 -3 bedroom units of approximately 960 square feet

Utilities included:

-Gas

-Water/sewer

Amenities include:

-2 wheelchair accessible units

-Off street parking

-Private entrances

-Laundry hook-ups in basement

Schools:

Elementary – Franklin/Randall

Middle – Hamilton

High – West

Alderson & District:

District 13

Isadore Knox, Jr.

(608) 255-4302

district13@cityofmadison.com

