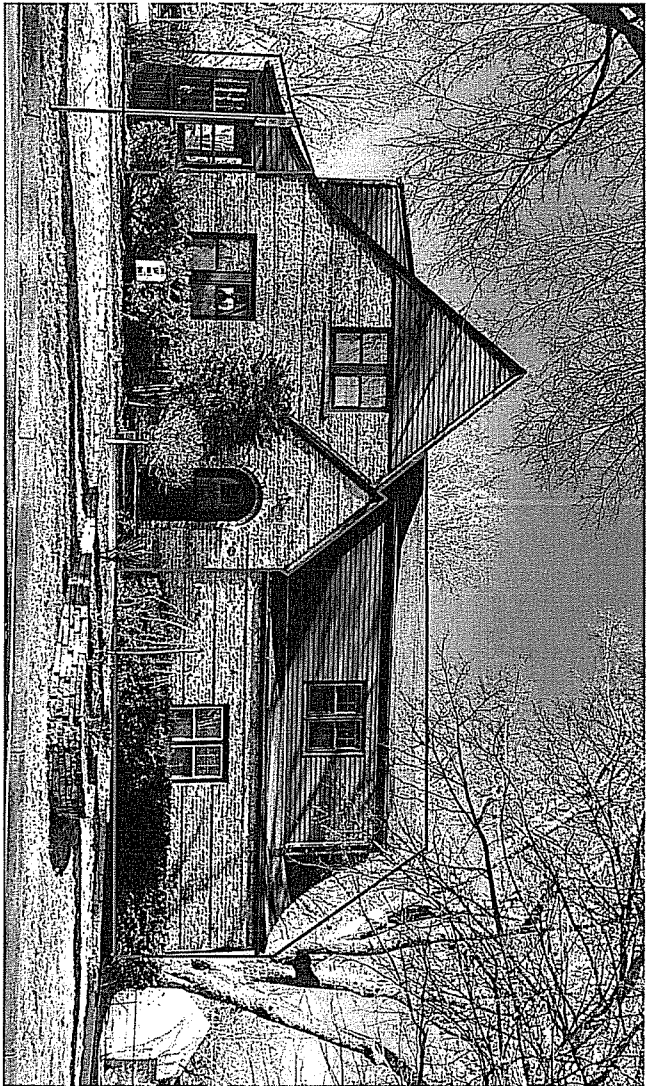


-Furnishings by others.

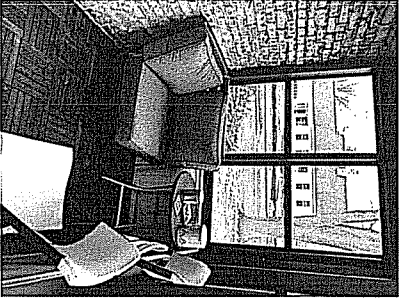
• These documents are the property of Associated Housewrights and are exclusively for Associated Housewright use.

-Not intended for construction

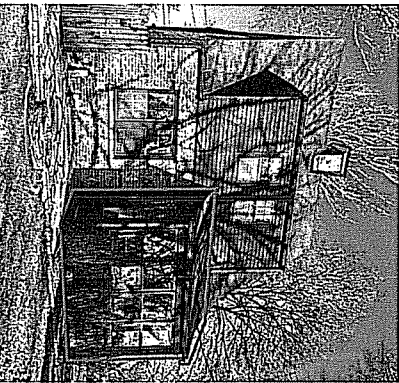
1990S (?) ERA ADDITION TO BE REMOVED - INCLUDES GARAGE AND MASTER SUITE  
TINY ENCLOSED PORCH TO BE REMOVED



TINY ENCLOSED PORCH INTERIORS



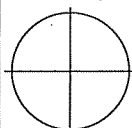
TINY ENCLOSED PORCH & CHIMNEY TO BE REMOVED



• Site verify all dimensions. Report discrepancies to A4I Design

• Plan views assume walls have first layer of sheathing on each side (see typical sections) unless otherwise noted.

• Larger scaled drawings supersede smaller scale drawings.

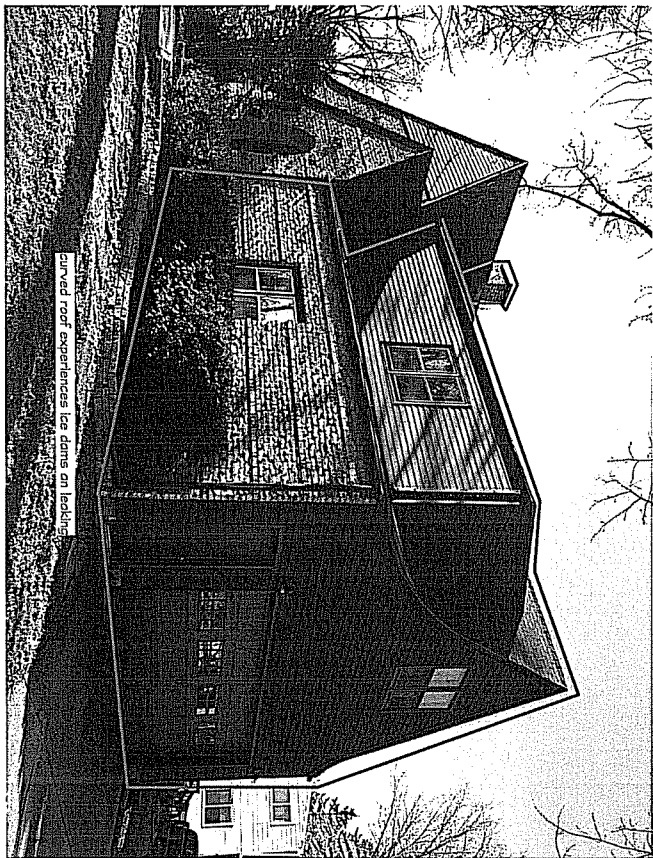
Page Size: 11 X 17 Scale: as noted Page/Drawing 1 of 9		<b>ASSOCIATED HOUSEWRIGHTS</b> 1217 Culmen St. Madison, WI 53719 <a href="http://www.housewrights.com">www.housewrights.com</a> (608) 238 - 7519	<b>ADDITION / REMODEL</b> JOSEPH AND EMILY REINARDY 408 WESTMORLAND LBVD. MADISON, WI 53713	Version/Date: LAND USE PHOTOS 180316 <b>04.09.18</b> Printed by: <b>M.H.</b>
---	---	---	--	---

3

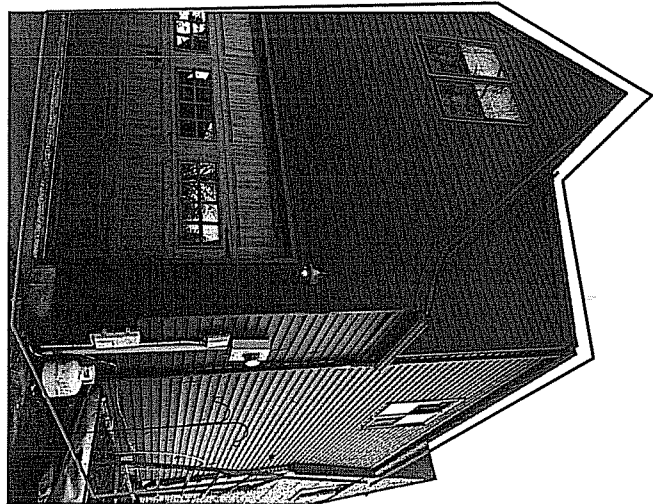
Furnishings by others.  
 1990S (?) ERA ADDITION TO BE REMOVED - INCLUDES GARAGE AND MASTER SUITE

• These documents are the property of Associated Housewrights and are exclusively for Associated Housewright use.

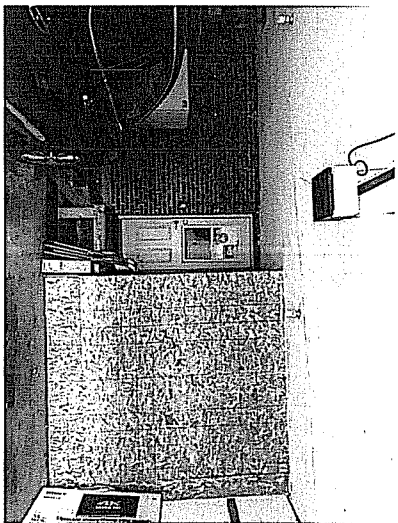
Not intended for construction



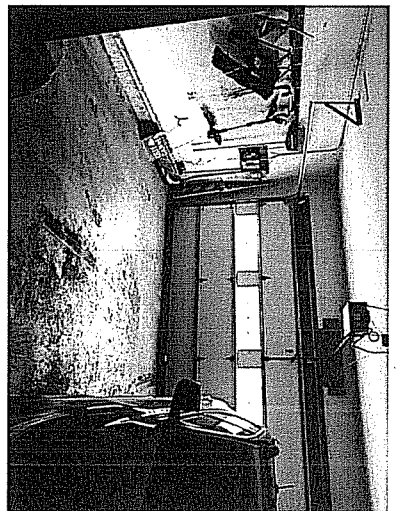
curved roof experiences ice dams on leading



**GARAGE INTERIOR**



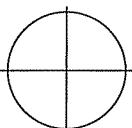
steps up from garage to house is challenging for everyday living



• Site verify all dimensions. Report discrepancies to AH Design.

• Plan views assume walls have first layer of sheathing on each side (see typical sections) unless otherwise noted.

• Larger scaled drawings supersede smaller scale drawings.

	<p><b>ASSOCIATED HOUSEWRIGHTS</b>          1217 Culmen St. Madison, WI 53713  <a href="http://www.housewrights.com">www.housewrights.com</a>          (608) 238-7519</p>	<p><b>ADDITION / REMODEL</b>          JOSEPH AND EMILY REINARDY          408 WESTMORLAND LBVD.          MADISON, WI. 53713</p>	<p>Version/Date:          LAND USE PHOTOS          190316  <b>04.09.18</b>          Printed by:  <b>m.h.</b></p>
<p>Page          Size: <b>11 x 17</b>          Scale:          as noted          Page/Drawing  <b>2 of 9</b></p>			

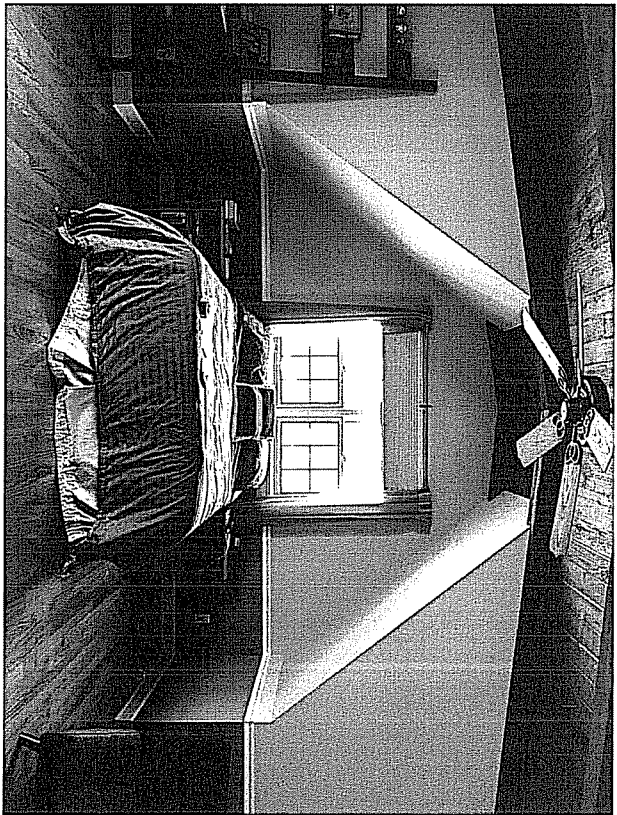
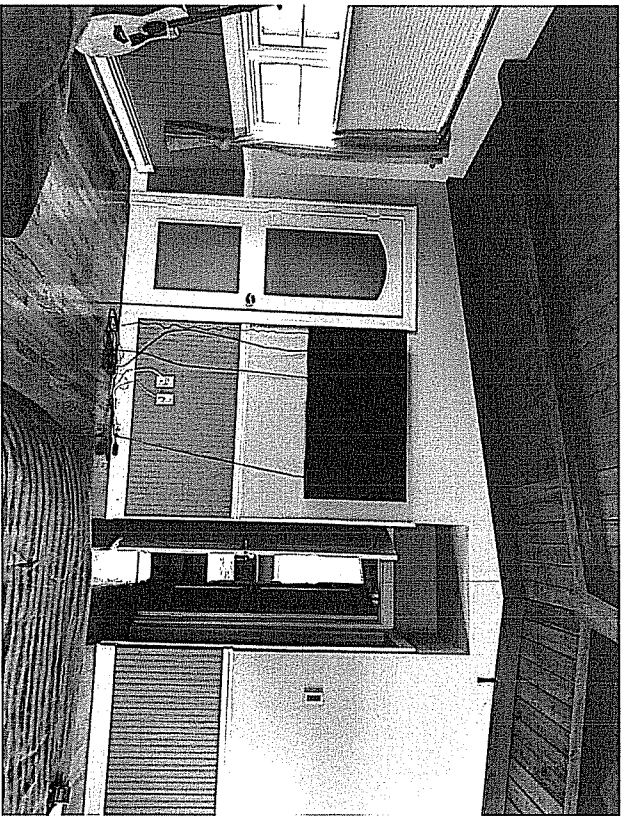
24

\*Furnishings by others.

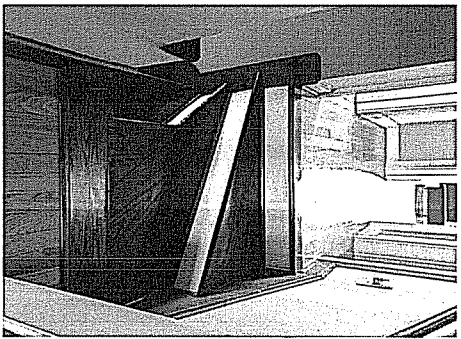
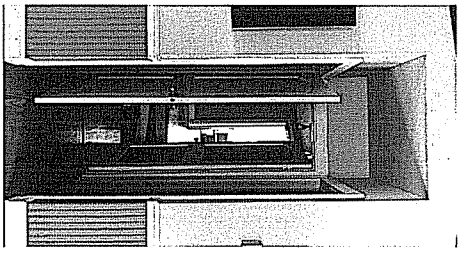
MASTER SUITE INTERIOR  
(electric baseboard heat, no A/C, insufficient insulation to garage below, awkward and unsafe transition off staircase winder trends)

\* These documents are the property of Associated Housewrights and are exclusively for Associated Housewright use.

\*Not intended for construction




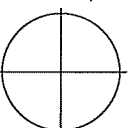
THE WAY IN WHICH THE 1980'S ERA ADDITION WAS ADDED TO THE HOUSE CREATED AN UNSAFE CONDITION AT THE EXISTING WINDER OF THE STAIRCASE



\* Site verify all dimensions. Report discrepancies to A4I Design.

\* Plan views assume walls have first layer of sheathing on each side (see typical sections) unless otherwise noted.

\* Larger scaled drawings supersede smaller scale drawings.

Version/Date: LAND USE PHOTOS 180316 <b>04.09.18</b> Printed by: <b>M.H.</b>	ADDITION / REMODEL JOSEPH AND EMILY REINARDY 408 WESTMORLAND LBVD. MADISON, WI. 53713	 <p><b>ASSOCIATED HOUSEWRIGHTS</b> 1217 Culmen St. Madison, WI. 53715 www.housewrights.com (608) 238 - 7519</p>	 <p>Page Size: <b>11 X 17</b> Scale: as noted Page/Drawing <b>3 of 9</b></p>
---	--	--	---

41