



Public Safety Review Committee

Madison Police Department

November 2022



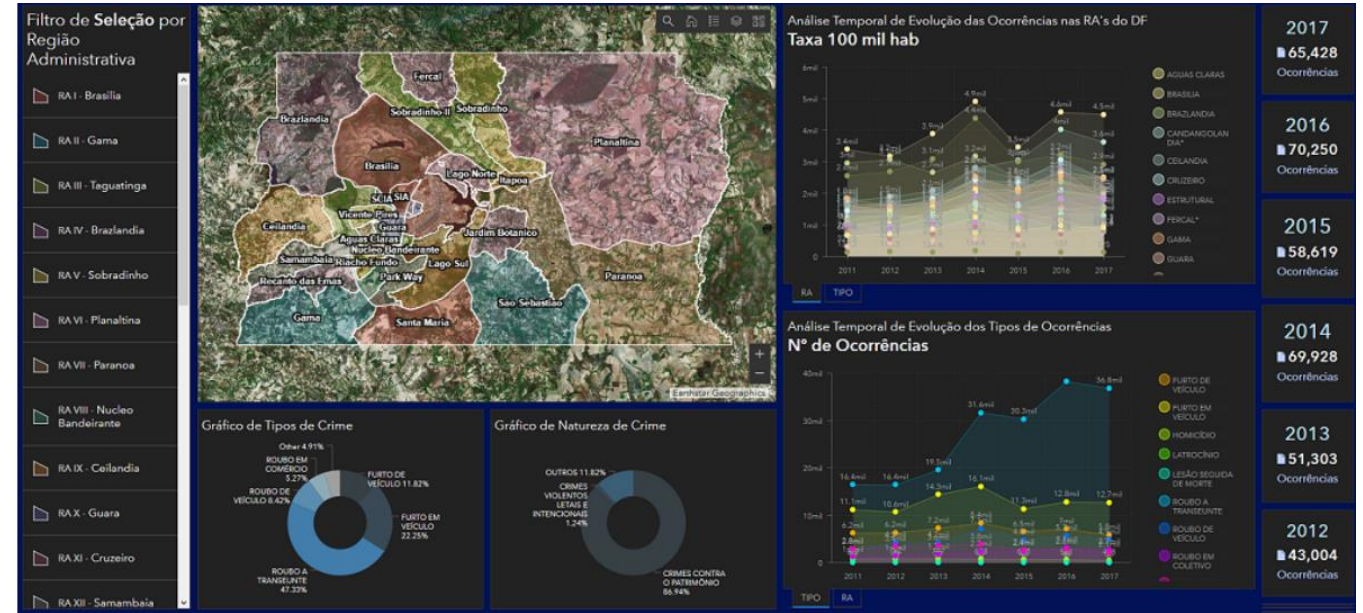
Gun Violence Reduction Update

- Summer Strategic Plan dates: (6/1/22 – 10/31/22) **(-16.8% reduction in shots fired YTD)**
- Focus areas: Shots fired, Stolen Autos, and Serious Traffic Injuries
- Strategies: Place Based, Person Based, and Data Analytics
- **Placed based-** Established thresholds for increased police responses, process all confirmed crime scenes, partner with the community to develop leads.
- **Person Based-** Assign cases and leads to detectives, follow-up with victims and suspects, arrest suspects and ensure successful prosecution.
- **Data Analytics:** create crime bulletins, accountability meetings, NIBIN processing
- **NIBIN:**
 - There were 248* case numbers processed during the strategic plan time period. The majority of the 248 cases were from 2022 (220 cases), but we also had cases from 2017 (2), 2020 (17), and 2021 (9).
 - Test fired a total of 163 guns.
 - We've triaged a total of 493 fired casings collected at scenes, and of those casings, we entered 123 fired casings into NIBIN.
- We've received 91* lead notifications.



Harm Focused Data Dashboard

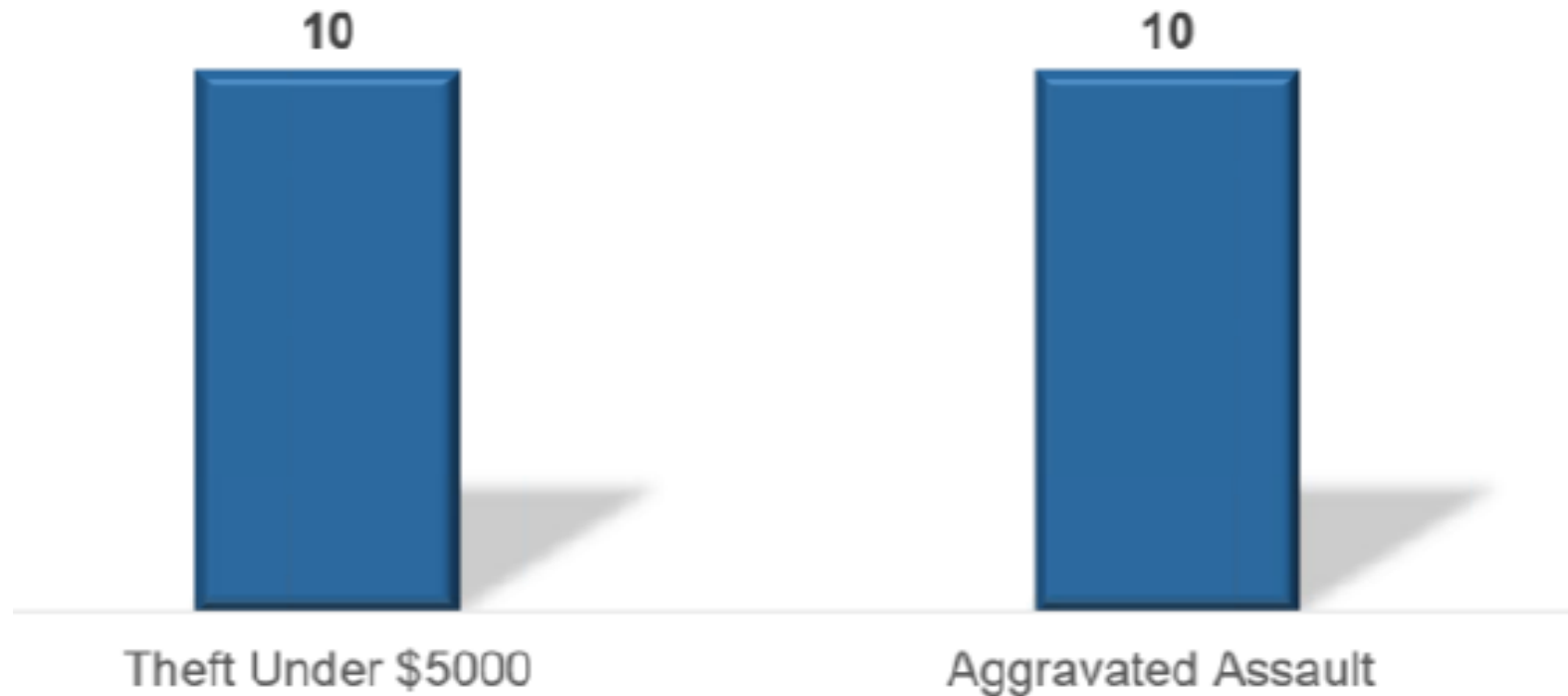
- A data dashboard offers timely information about relevant workload and crime data and serves to improve communication, information-sharing, and transparency.
- Most dashboards include calls for service, crime statistics, and arrests and criminal complaints.





Traditional Crime v Harm-Focused Measurement

Theft & Assault by Volume





Harm Focused Policing

- 1 crime = weight of that crime based on index
- The index is created using a variety of inputs.
- Focuses on harm caused to the community
- Ability to remove indicators that could be influenced by police proactivity
- Accounts for the severity of that crime in addition to the volume of that crime (Wallace et.al., 2009).
- A better understanding of crime within the community.



Next Steps

- Presentation with Barrie Police Department in Canada.
- Literature review
- Collaboration with city IT
- Determine the appropriate metric for creating a harm index
- Create a proposal
- Evaluate costs and employee workload
- Determine how to include community input in the metric system