

APPLICATION FOR
URBAN DESIGN COMMISSION
REVIEW AND APPROVAL

AGENDA ITEM # _____
Project # _____

DATE SUBMITTED: <u>Nov 9TH 2005</u>	Action Requested
UDC MEETING DATE: <u>Nov 16TH 2005</u>	<input type="checkbox"/> Informational Presentation
	<input checked="" type="checkbox"/> Initial Approval and/or Recommendation
	<input type="checkbox"/> Final Approval and/or Recommendation

PROJECT ADDRESS: 1402 WINGA CREEK PARKWAY, MADISON, WI 53715
ALDERMANIC DISTRICT: 13

OWNER/DEVELOPER (Partners and/or Principals) ARCHITECT/DESIGNER/OR AGENT:
CITY OF MADISON DEPT. OF PUBLIC WORKS - PARKS DIVISION RICH LUNDEEN
MADISON MUNICIPAL BUILDING 1468 NORTH HIGH POINT RD SUITE 100
SUITE 120 215 MARTIN LUTHER KING BLVD BRAY ASSOCIATES ARCHITECTS, INC
MADISON, WI 53701/2987 MIDDLETON, WI 53562

CONTACT PERSON: SIMON WIDSTRAND, PARKS DEVELOPMENT MANAGER
Address: 1402 WINGRA CREEK PARKWAY
MADISON, WI 53715
Phone: (608) 266-4711
Fax: (608) 267-1162
E-mail address: a.widstrand@cityofmadison.com

TYPE OF PROJECT:
(See Section A for:)

- Planned Unit Development (PUD)
- General Development Plan (GDP)
- Specific Implementation Plan (SIP)
- Planned Community Development (PCD)
- General Development Plan (GDP)
- Specific Implementation Plan (SIP)
- Planned Residential Development (PRD)
- New Construction or Exterior Remodeling in an Urban Design District * (A public hearing is required as well as a fee)
- School, Public Building or Space (Fee may be required)
- New Construction or Addition to or Remodeling of a Retail, Hotel or Motel Building Exceeding 50,000 Sq. Ft.
- Planned Commercial Site

(See Section B for:)

- New Construction or Exterior Remodeling in C4 District (Fee required)

(See Section C for:)

- R.P.S.M. Parking Variance (Fee required)

(See Section D for:)

- Comprehensive Design Review* (Fee required)
- Street Graphics Variance* (Fee required)
- Other _____

*Public Hearing Required (Submission Deadline 3 Weeks in Advance of Meeting Date)



CITY OF
MADISON

PARKS DIVISION

GOODMAN PARK MAINTENANCE FACILITY

1402 WINGRA CREEK PARKWAY

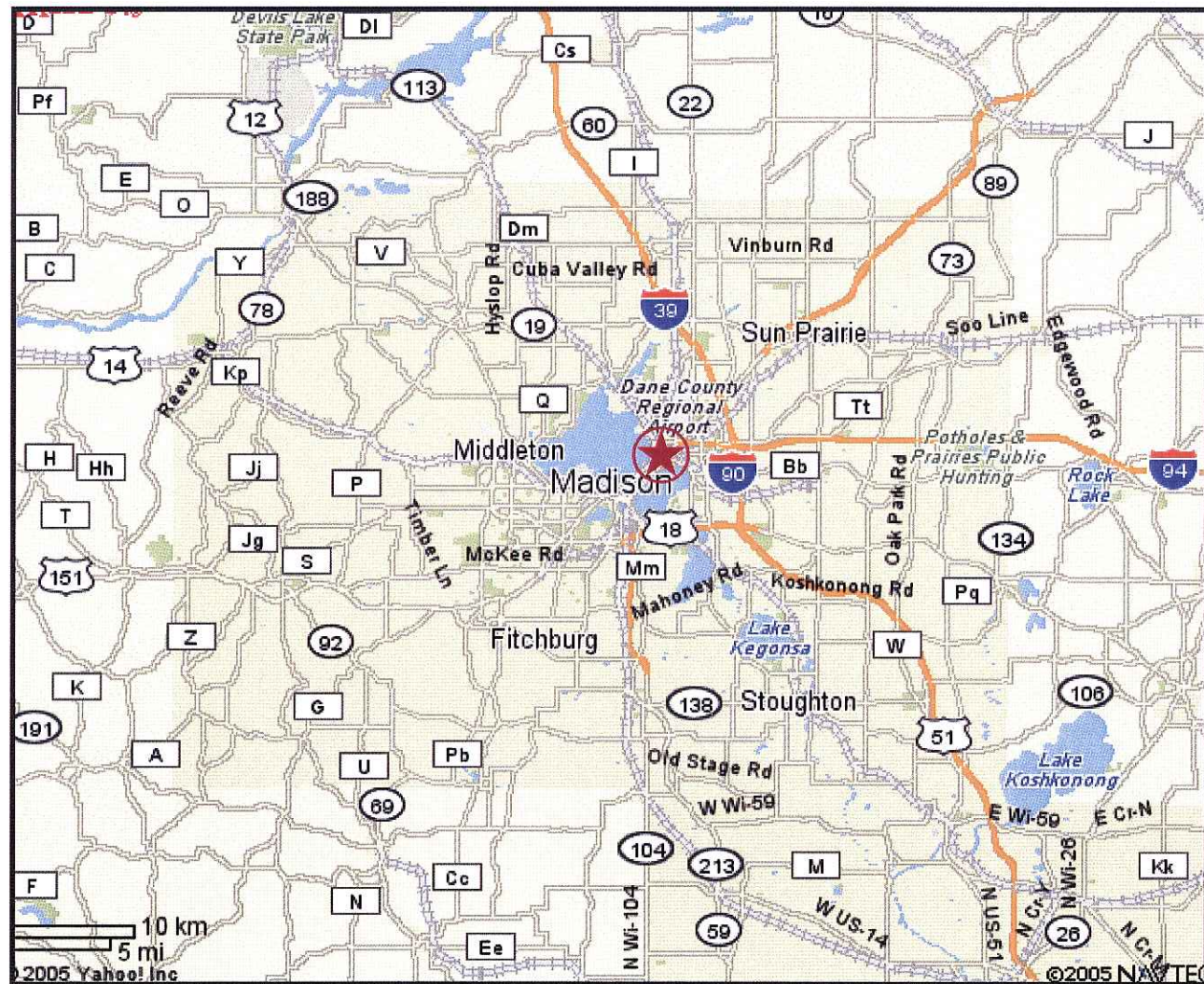
URBAN DESIGN COMMISSION / INITIAL APPROVAL

NOVEMBER 16, 2005

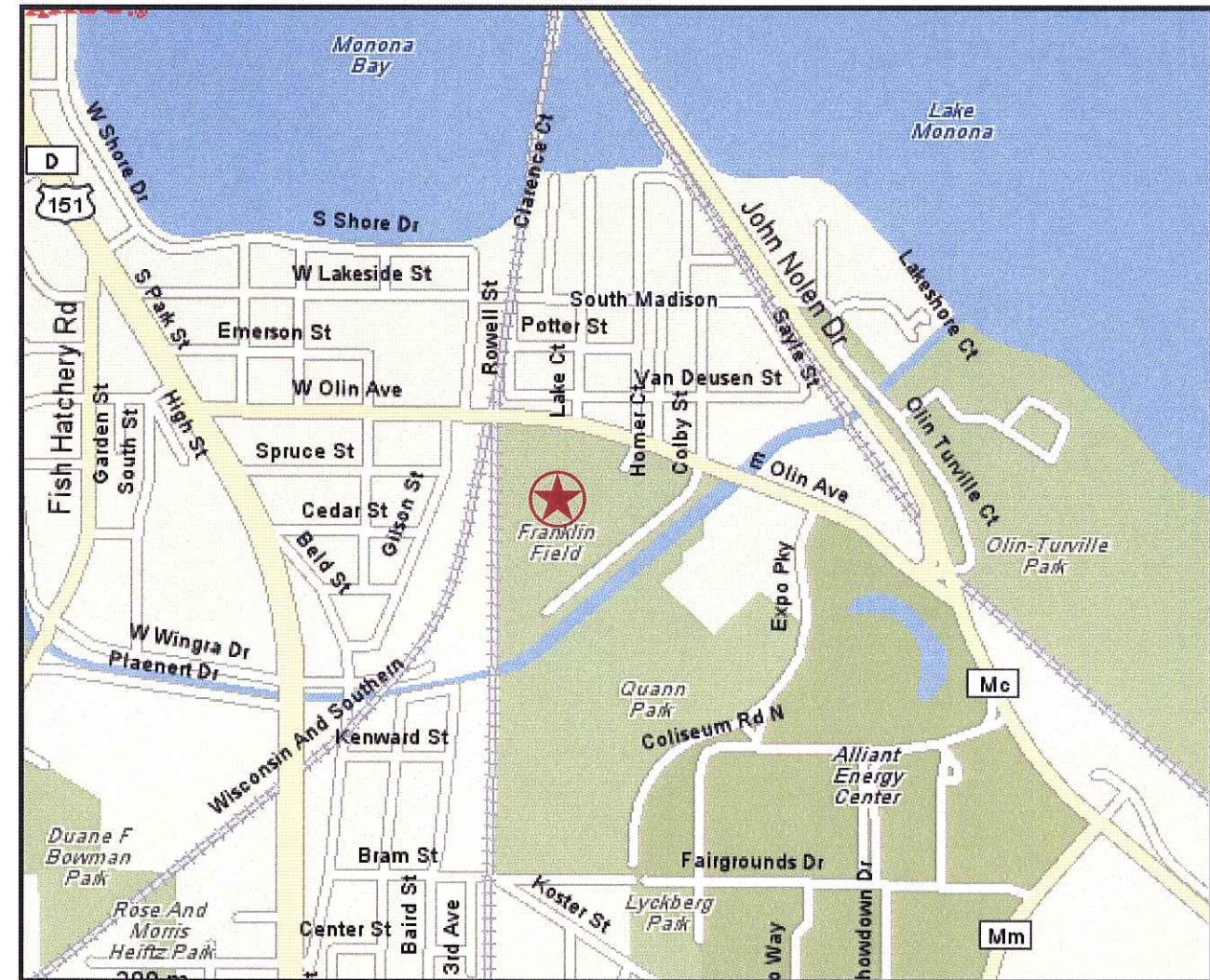
PRESENTED BY:

BrayAssociates
ARCHITECTS, INC.

GOODMAN PARK MAINTENANCE FACILITY
 1402 WINGRA CREEK PARKWAY
 MADISON, WISCONSIN 53073



CITY LOCATION MAP



PROJECT LOCATION MAP

NOVEMBER 16, 2005

GOODMAN PARK - LOCATION MAPS

MADISON PARKS DIVISION



POOL CONCEPT AT GOODMAN PARK

The City of Madison Parks Division plans to renovate portions of their maintenance facility at Goodman Park, formerly known as Franklin Field.

Currently, the Maintenance Facility site is comprised of five buildings. Four of these structures are storage buildings for vehicles and equipment, and are constructed as steel or wood structures with metal panel siding and sloped metal roofs. (These buildings were built from 1940 to 1991.)

The predominant building on the site is the Administration and Workshop Building, which is constructed of single width painted concrete block.

The proposed project addresses the Administration / Workshop Building by remodeling and additions.

The design of the maintenance building site and structures will be influenced by current development at Goodman Park, specifically, the new public swimming pool.

The overall use of the park ranges from structured recreational uses and informal gatherings, to a highly developed and potentially intensive usage.

The goals for developing the maintenance facility site and structures is to take elements of the architecture and site design and integrate them into the vocabulary for the park's facility with elements of the pool design being adapted into the maintenance imagery. It is preferable to have the maintenance site visually recede from the activity, expressive pool structures and site development. The intent is to have the Goodman Pool be the imagery and development statement for Goodman Park while the Maintenance Facility is an integrated component.

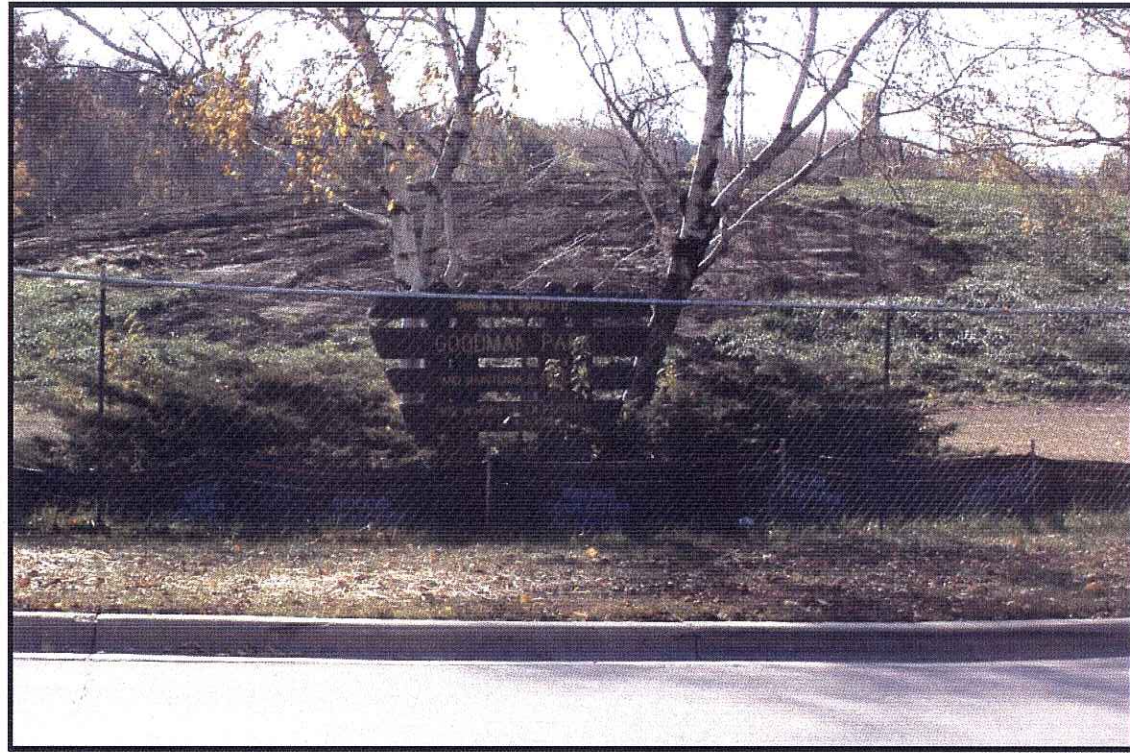
To that end, the design vocabulary of architectural faced concrete block, sloped metal roofing where applicable, and other architectural concrete products allude to the pool structures. The site edge development fencing and lighting schemes integrate with the pool details.

The maintenance site and Administration / Workshop Building take on a tone-on-tone color palette and will be the quiet contrast to the pool's vibrant imagery.

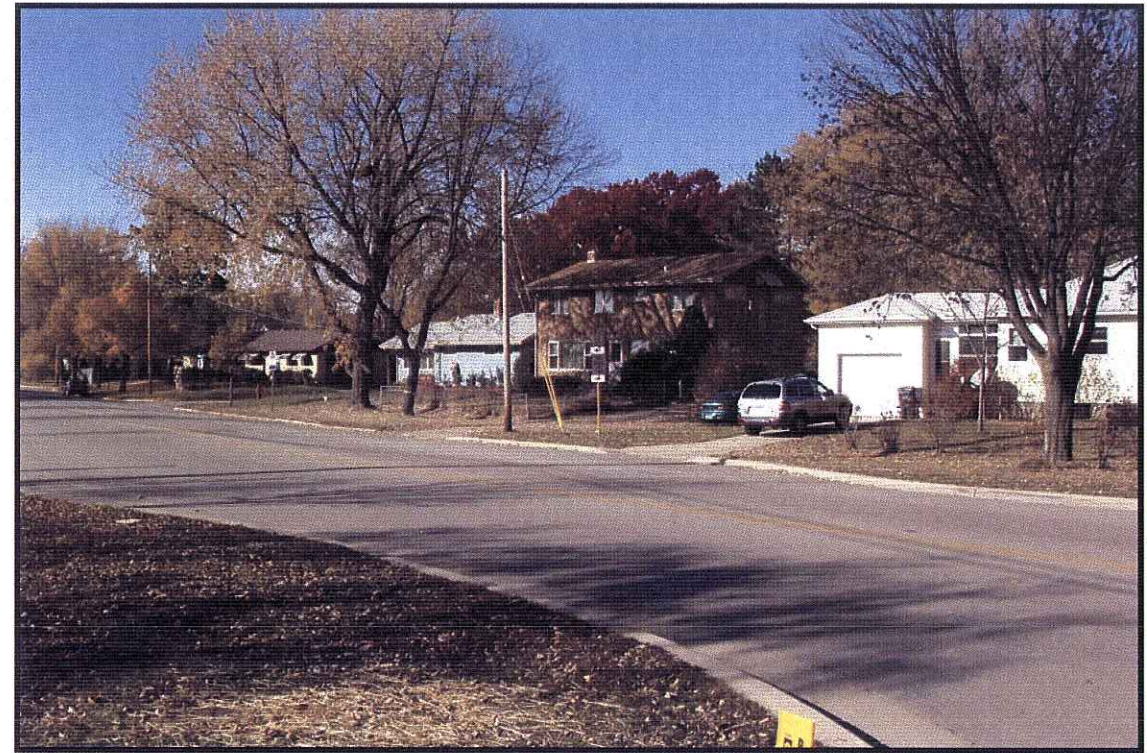
NOVEMBER 16, 2005

GOODMAN PARK - NARRATIVE

MADISON PARKS DIVISION



PARK ENTRANCE SIGN



VIEW OF NEIGHBORHOOD - LOOKING NORTH



VIEW OF WINGRA CREEK PARKWAY



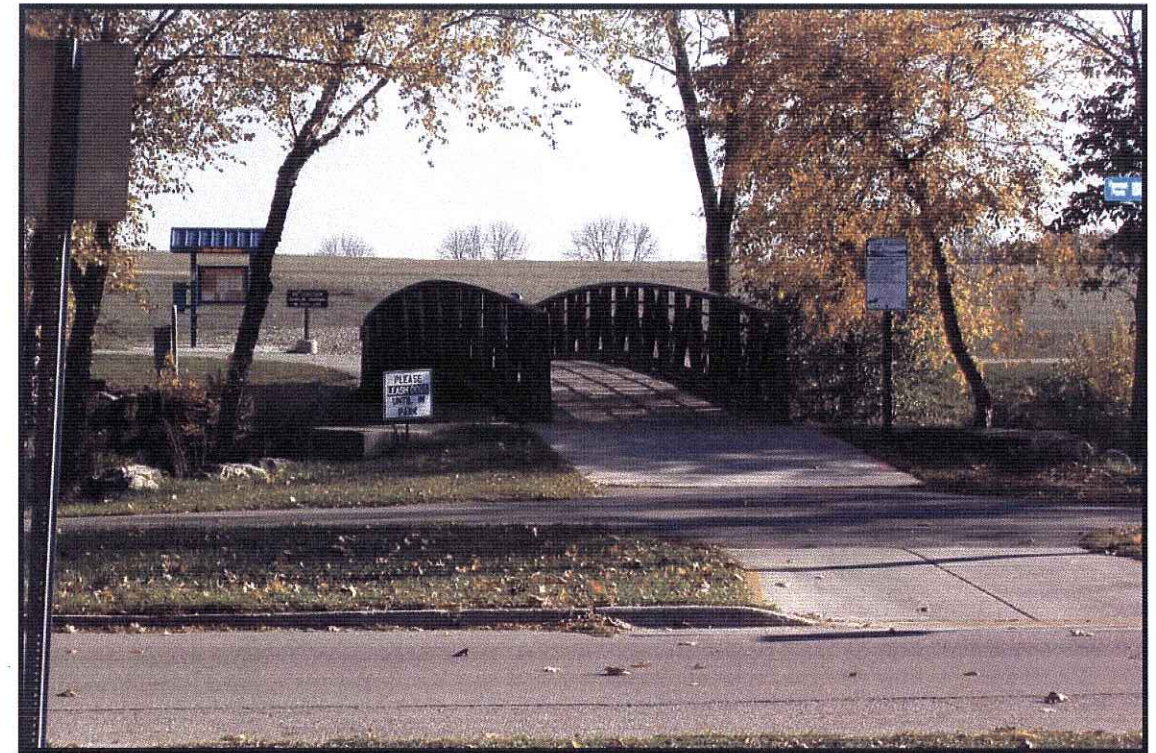
VIEW OF PARKING AREA & MAINTENANCE FACILITY

NOVEMBER 16, 2005

GOODMAN PARK - SITE PHOTOS



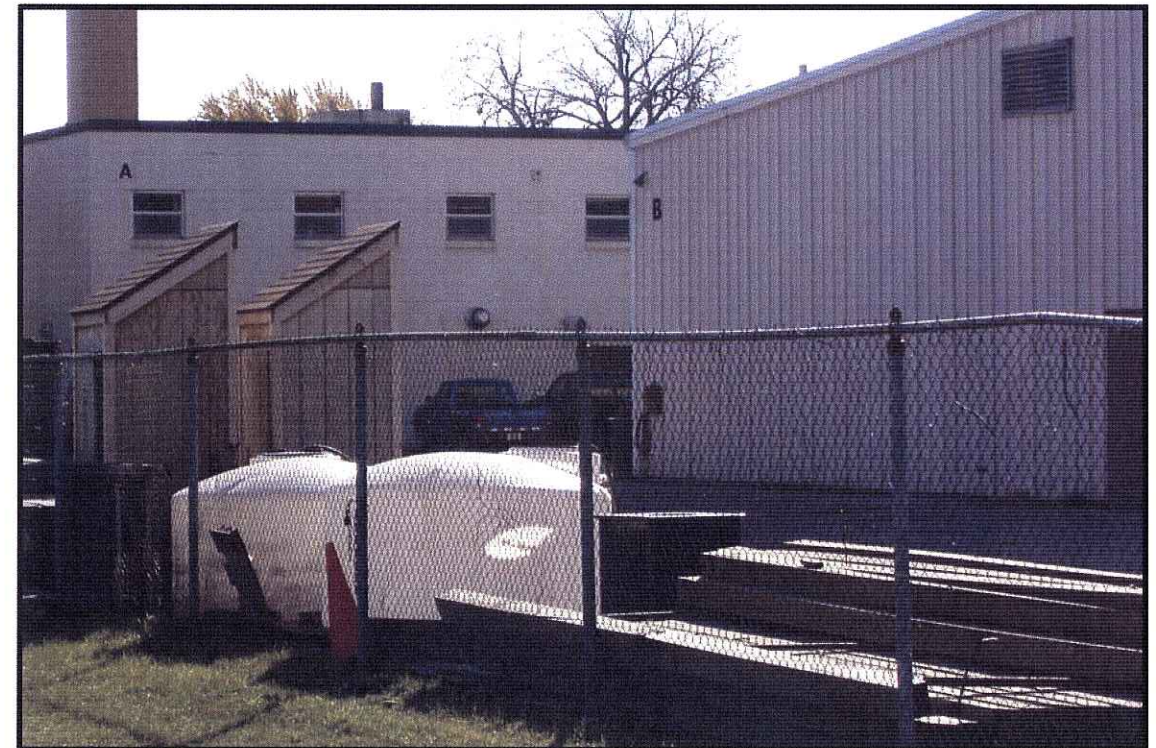
ENTRANCE TO MAINTENANCE SITE



BRIDGE TO DOG PARK



WINGRA CREEK EDGE TO MAINTENANCE FACILITY



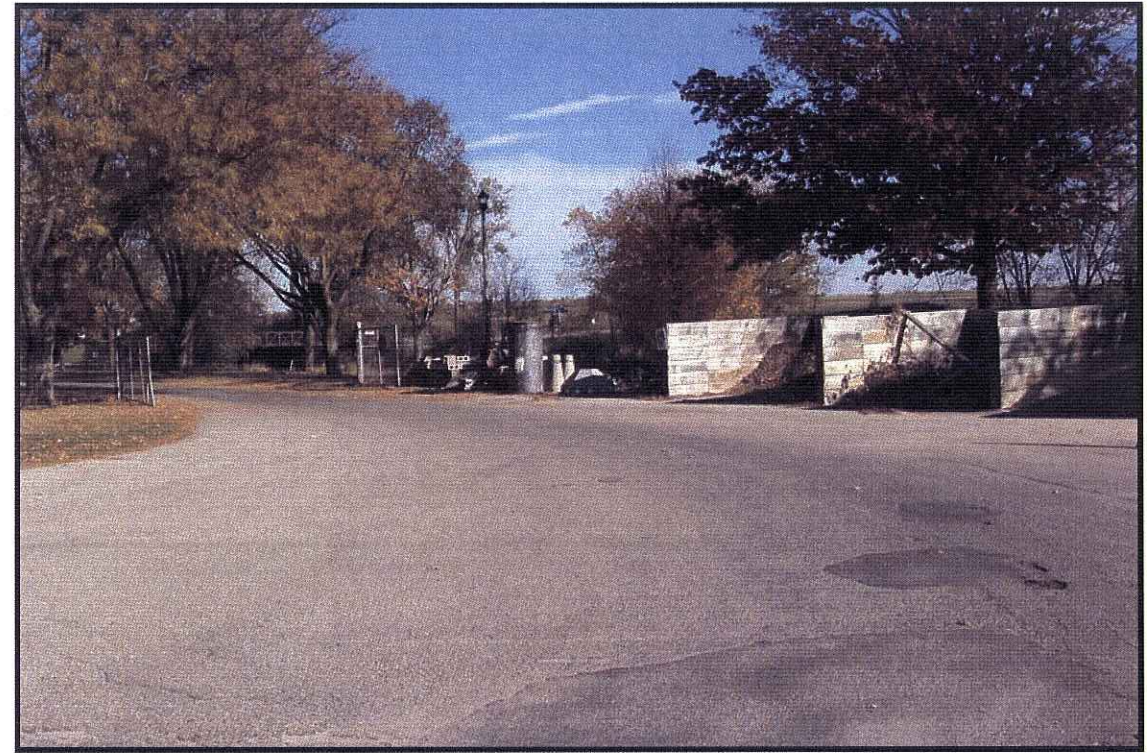
VIEW FROM BALL DIAMOND TOWARD MAINTENANCE FACILITY

NOVEMBER 16, 2005

GOODMAN PARK - SITE PHOTOS



ENTRANCE TO MAINTENANCE FACILITY



BORDER WITH WINGRA CREEK



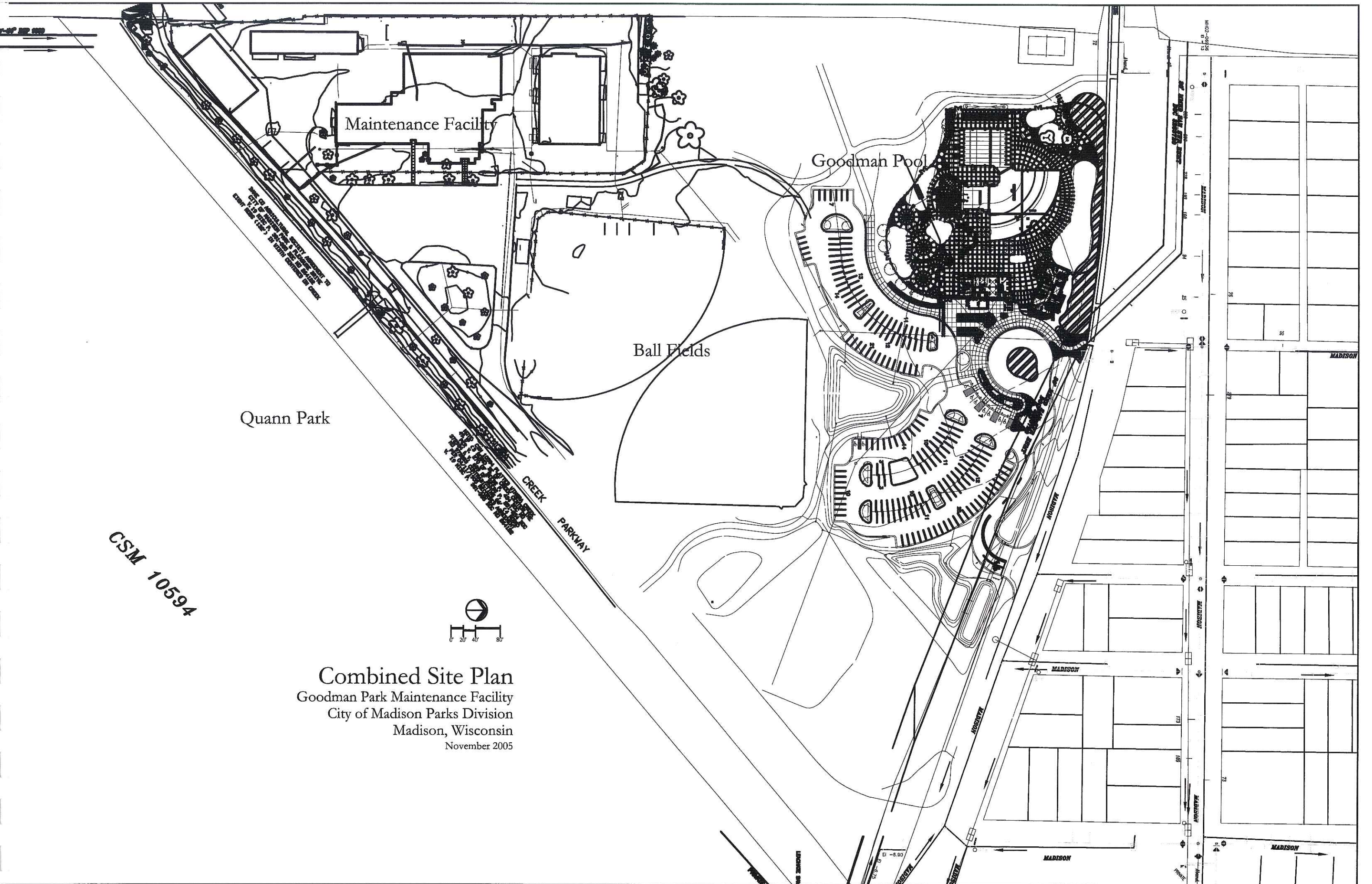
VIEW OF EXISTING MAINTENANCE FACILITY

NOVEMBER 16, 2005

GOODMAN PARK - SITE PHOTOS

BrayAssociates
ARCHITECTS, INC.

MADISON PARKS DIVISION



Maintenance Facility

Goodman Pool

Ball Fields

Quann Park

CREEK PARKWAY

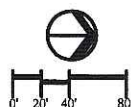
MADISON

MADISON

MADISON

CSM 10594

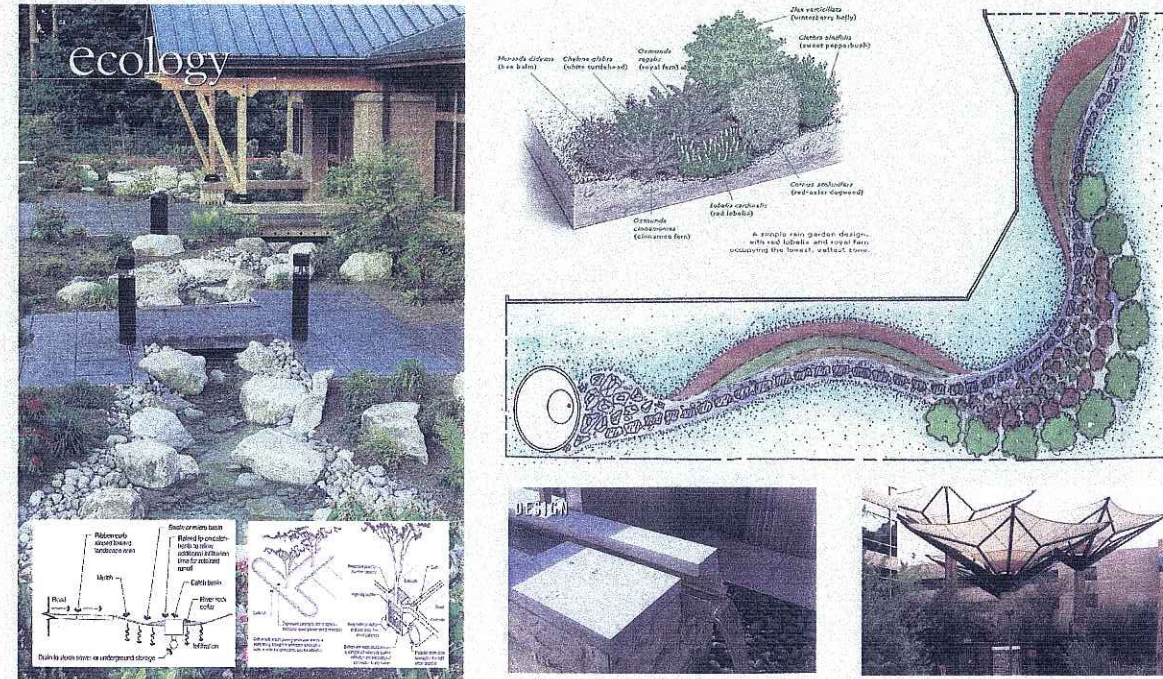
Combined Site Plan
Goodman Park Maintenance Facility
City of Madison Parks Division
Madison, Wisconsin
November 2005



Site Furnishing



Storm Water



Shade Structures



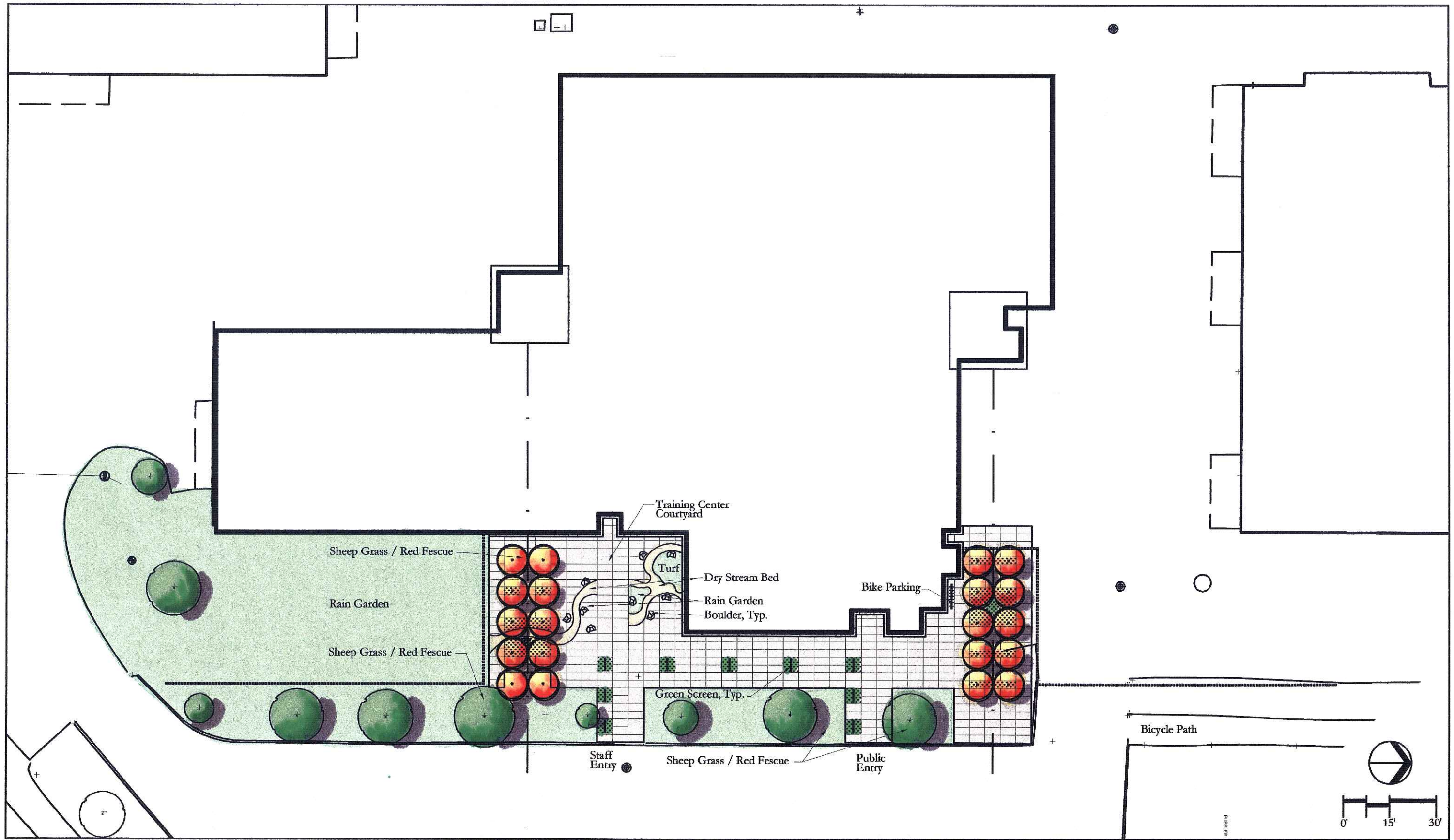
Plant Material



Rettler Corporation
Middleton, Wisconsin

Materials Board

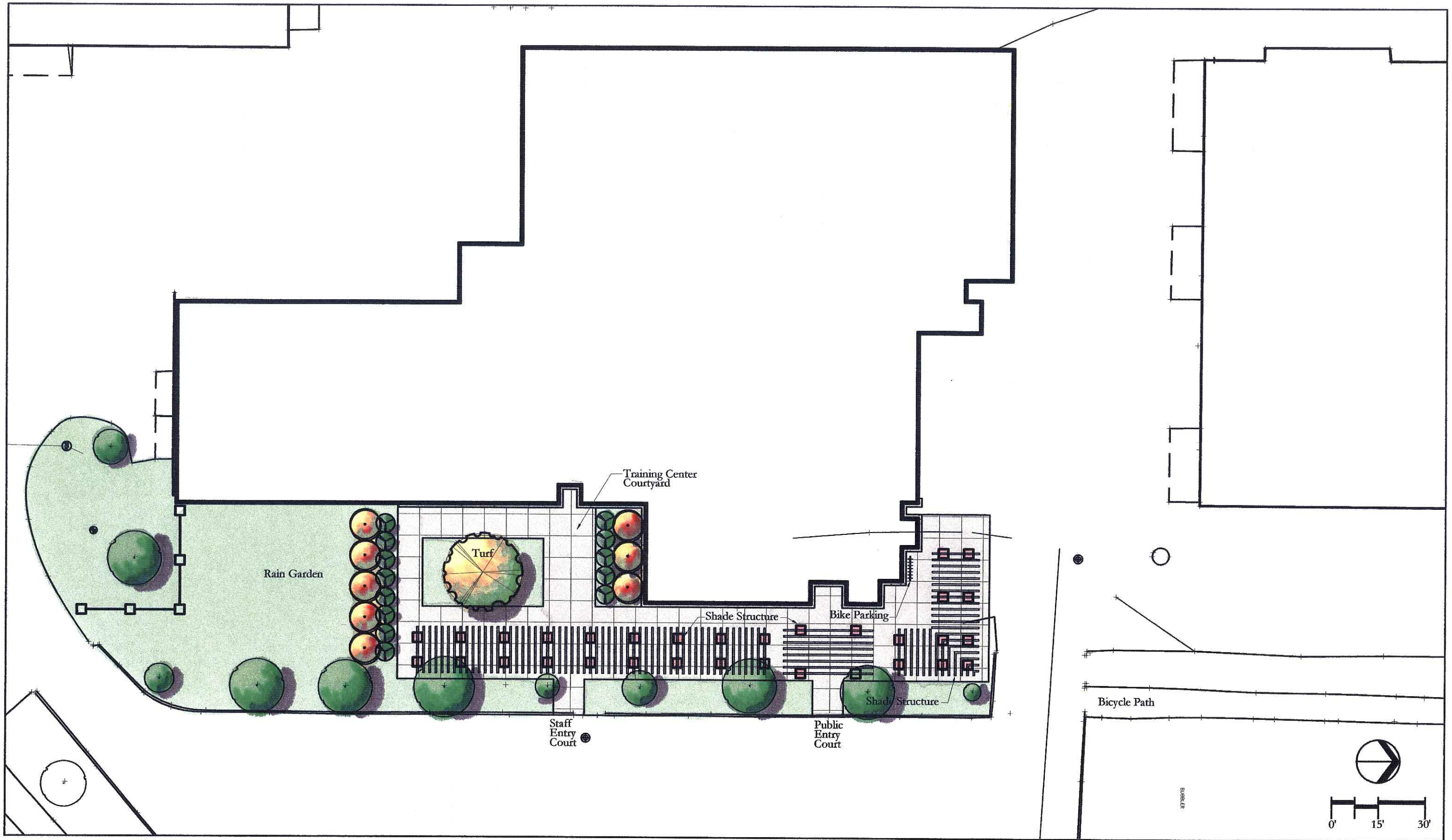
Goodman Park Maintenance Facility
City of Madison Parks Division
Madison, Wisconsin



Rettler Corporation
Middleton, Wisconsin

Concept A

Goodman Park Maintenance Facility
City of Madison Parks Division
Madison, Wisconsin



Rettler Corporation
Middleton, Wisconsin

Concept B

Goodman Park Maintenance Facility
City of Madison Parks Division
Madison, Wisconsin

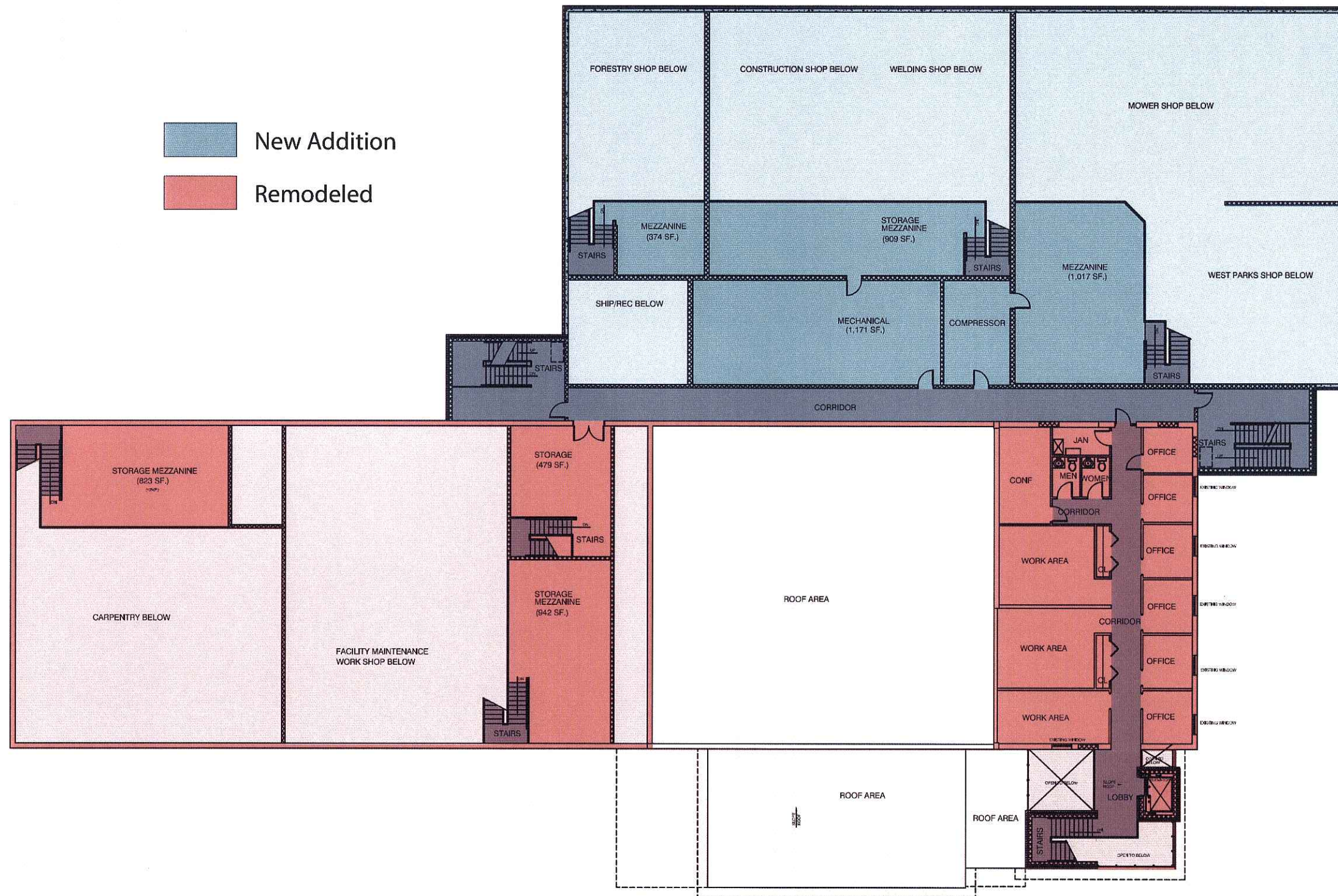


NOVEMBER 16, 2005

GOODMAN PARK - FIRST FLOOR PLAN

MADISON PARKS DIVISION

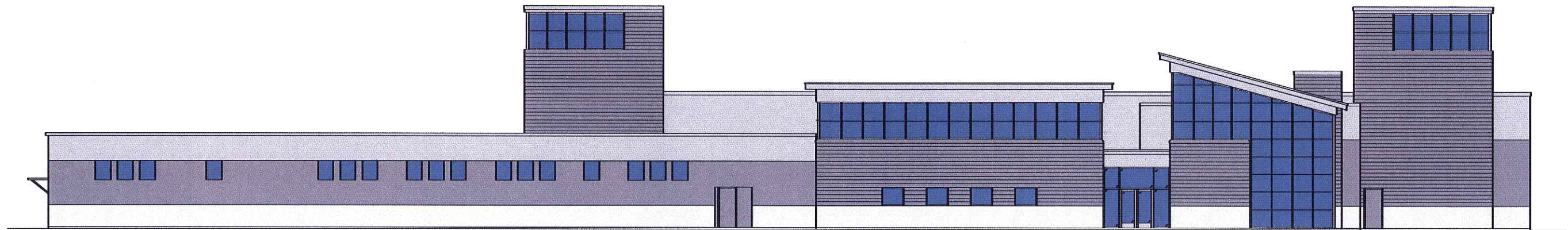
- New Addition
- Remodeled



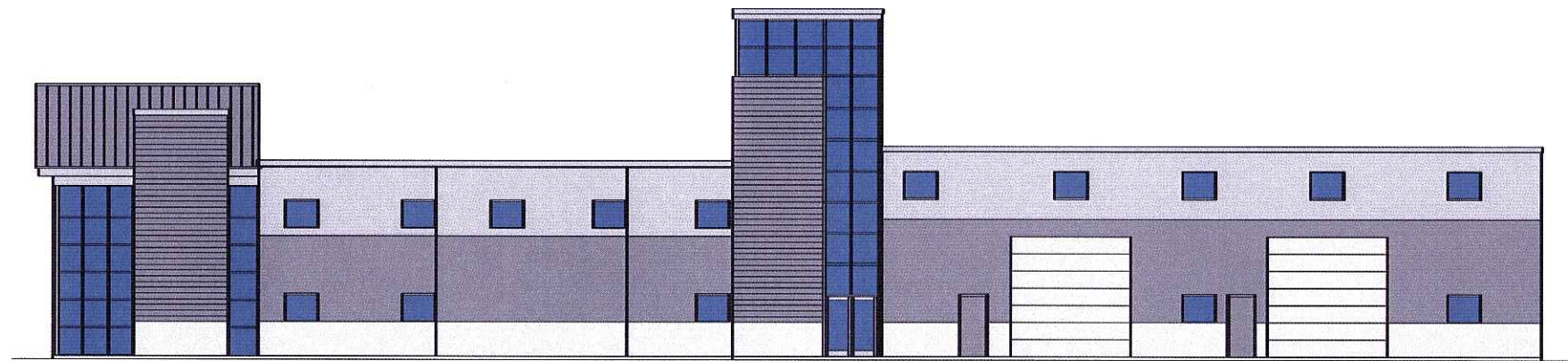
NOVEMBER 16, 2005

GOODMAN PARK - SECOND FLOOR PLAN

MADISON PARKS DIVISION



EAST ELEVATION



NORTH ELEVATION

NOVEMBER 16, 2005

GOODMAN PARK - MATERIAL & COLOR CONCEPTS

MADISON PARKS DIVISION

BrayAssociates
ARCHITECTS, INC.

