



euta
 333 East Chicago Street
 Madison, WI 53702
 608.251.5300
 www.euta.com

LWHealth
KRUPP
 GENERAL CONTRACTORS

PROJECT INFORMATION
750 UNIVERSITY ROW EXPANSION

750 University Row
 Madison, WI 53705

ISSUANCE AND REVISIONS

DATE	DESCRIPTION
REVISION	REV. 1.84.001
ISSUED	

KEY PLAN

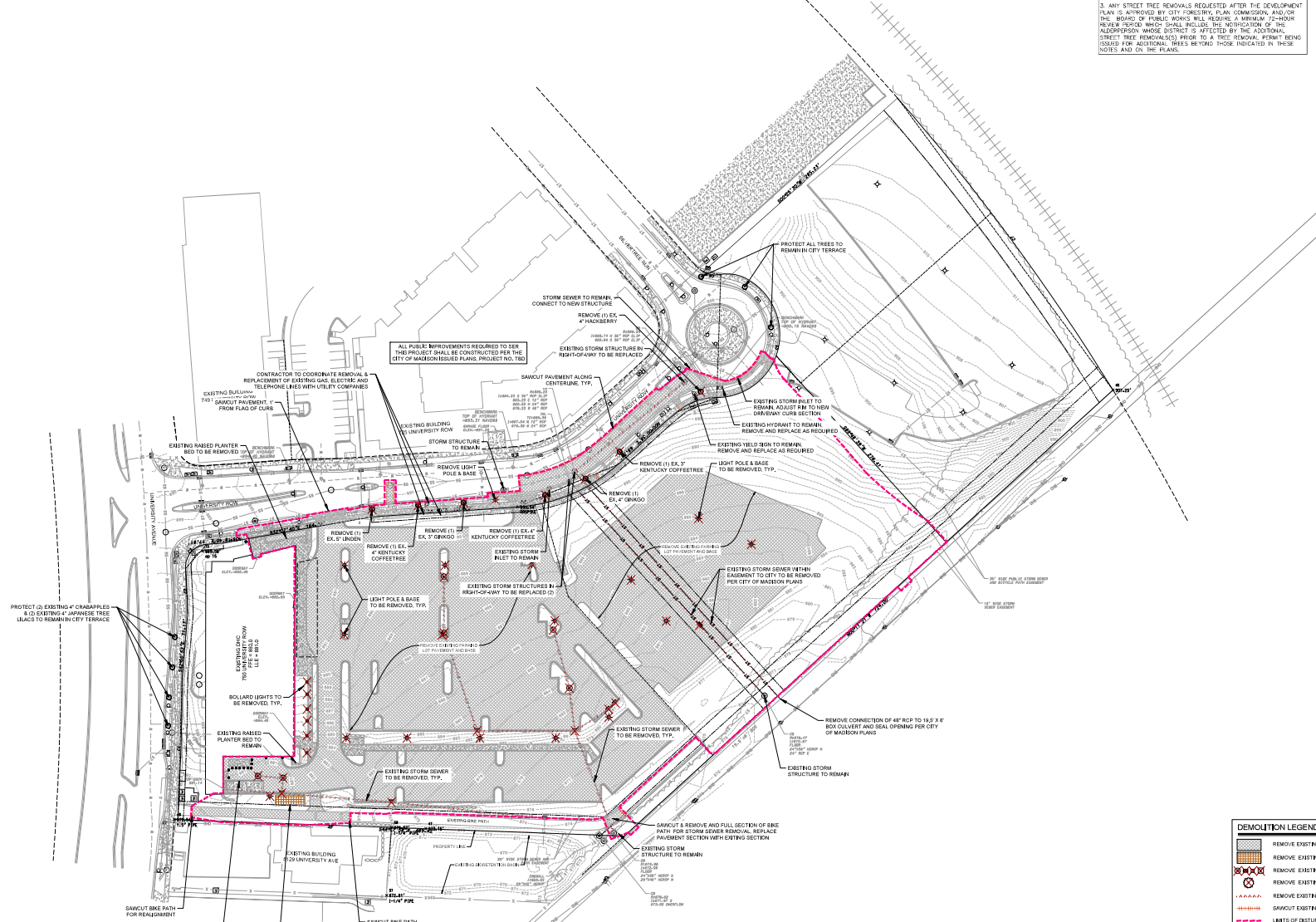
SHEET INFORMATION

PROGRESS DOCUMENTS
NOT FOR CONSTRUCTION
 These documents are progress and plan sets and may be issued to clients for information purposes only. They are not to be used for construction purposes and shall not be used for the design of any construction.

PROJECT MANAGER RB
 PROJECT NUMBER 422291

DEMOLITION PLAN
C200
 ©2022 Spectrum Architecture, Inc.

- NOTES:**
- CITY FORESTRY HAS APPROVED THE REMOVAL OF THE FOLLOWING TREES IN THE UNIVERSITY ROW RIGHT-OF-WAY AND A REMOVALS PERMIT WILL BE ISSUED FOR THE FOLLOWING 7 TREES:
 - 1. 4" LINDEN
 - 2. (2) 4" KENTUCKY COFFEETREES
 - 3. 5" CHDOG
 - 4. 4" CHDOG
 - 5. 3" KENTUCKY COFFEETREE
 - 6. 4" HACKBERRY
 - ALL PROPOSED STREET TREE REMOVALS WITHIN THE RIGHT-OF-WAY SHALL BE REVIEWED BY CITY FORESTRY BEFORE THE PLAN COMMISSION MEETING. STREET TREE REMOVALS REQUIRE APPROVAL FROM CITY FORESTRY AND A TREE REMOVAL PERMIT ISSUED BY CITY FORESTRY.
 - ANY STREET TREE REMOVALS REQUESTED AFTER THE DEVELOPMENT PLAN IS APPROVED BY CITY FORESTRY, PLAN COMMISSION, AND/OR THE BOARD OF PUBLIC WORKS WILL REQUIRE A MINIMUM 72-HOUR PUBLIC NOTICE PERIOD WHICH SHALL INCLUDE THE NOTIFICATION OF THE ALDERPERSON WHOSE DISTRICT IS AFFECTED BY THE ADDITIONAL STREET TREE REMOVAL(S) PRIOR TO A TREE REMOVAL PERMIT BEING ISSUED FOR ADDITIONAL TREES BEYOND THOSE INDICATED IN THESE NOTES AND ON THE PLANS.



- DEMOLITION LEGEND**
- [Hatched Area] REMOVE EXISTING PAVEMENT OR GRASS/
 - [Stippled Area] REMOVE EXISTING STRUCTURES
 - [Cross-hatched Area] REMOVE EXISTING UTILITY STRUCTURE
 - [Circle with X] REMOVE EXISTING STREET TREE
 - [Wavy Lines] REMOVE EXISTING UTILITIES
 - [Dashed Lines] SAWCUT EXISTING CURB OR PAVEMENT
 - [Thick Dashed Line] LIMITS OF DISTURBANCE

EXISTING UTILITIES

Symbol	Description	Symbol	Description
[S-S]	60" FIBER OPTIC	[Circle with X]	WASTE
[A-A]	48" FIBER OPTIC	[Circle with X]	RAINFALL
[X-X]	48" FIBER OPTIC	[Circle with X]	SEWER
[N-N]	48" FIBER OPTIC	[Circle with X]	STORM SEWER
[O-O]	36" FIBER OPTIC	[Circle with X]	TRASH
[E-E]	24" FIBER OPTIC	[Circle with X]	DEMOLITION TREE
[S-S]	18" FIBER OPTIC	[Circle with X]	UNEXPLODED BOMB
[E-E]	12" FIBER OPTIC	[Circle with X]	WIRELESS ANTENNA
[E-E]	8" FIBER OPTIC	[Circle with X]	TRUCK LINE
[E-E]	6" FIBER OPTIC	[Circle with X]	FLUORESCENT LIGHT
[E-E]	4" FIBER OPTIC	[Circle with X]	POWER WIRE
[E-E]	3" FIBER OPTIC	[Circle with X]	REINFORCED CONCRETE
[E-E]	2" FIBER OPTIC	[Circle with X]	BRICK
[E-E]	1" FIBER OPTIC	[Circle with X]	STAINLESS STEEL
[E-E]	0.75" FIBER OPTIC	[Circle with X]	STEEL
[E-E]	0.5" FIBER OPTIC	[Circle with X]	ALUMINUM
[E-E]	0.25" FIBER OPTIC	[Circle with X]	COPPER
[E-E]	0.125" FIBER OPTIC	[Circle with X]	GLASS
[E-E]	0.0625" FIBER OPTIC	[Circle with X]	PLASTER
[E-E]	0.03125" FIBER OPTIC	[Circle with X]	CONCRETE
[E-E]	0.015625" FIBER OPTIC	[Circle with X]	BRICK RETAINING WALL
[E-E]	0.0078125" FIBER OPTIC	[Circle with X]	CONCRETE RETAINING WALL
[E-E]	0.00390625" FIBER OPTIC	[Circle with X]	POWER
[E-E]	0.001953125" FIBER OPTIC	[Circle with X]	CONCRETE FLOOR AND BEAMS
[E-E]	0.0009765625" FIBER OPTIC	[Circle with X]	WOODEN SHIP
[E-E]	0.00048828125" FIBER OPTIC	[Circle with X]	WATER SIGNAL
[E-E]	0.000244140625" FIBER OPTIC	[Circle with X]	48" GAS METER



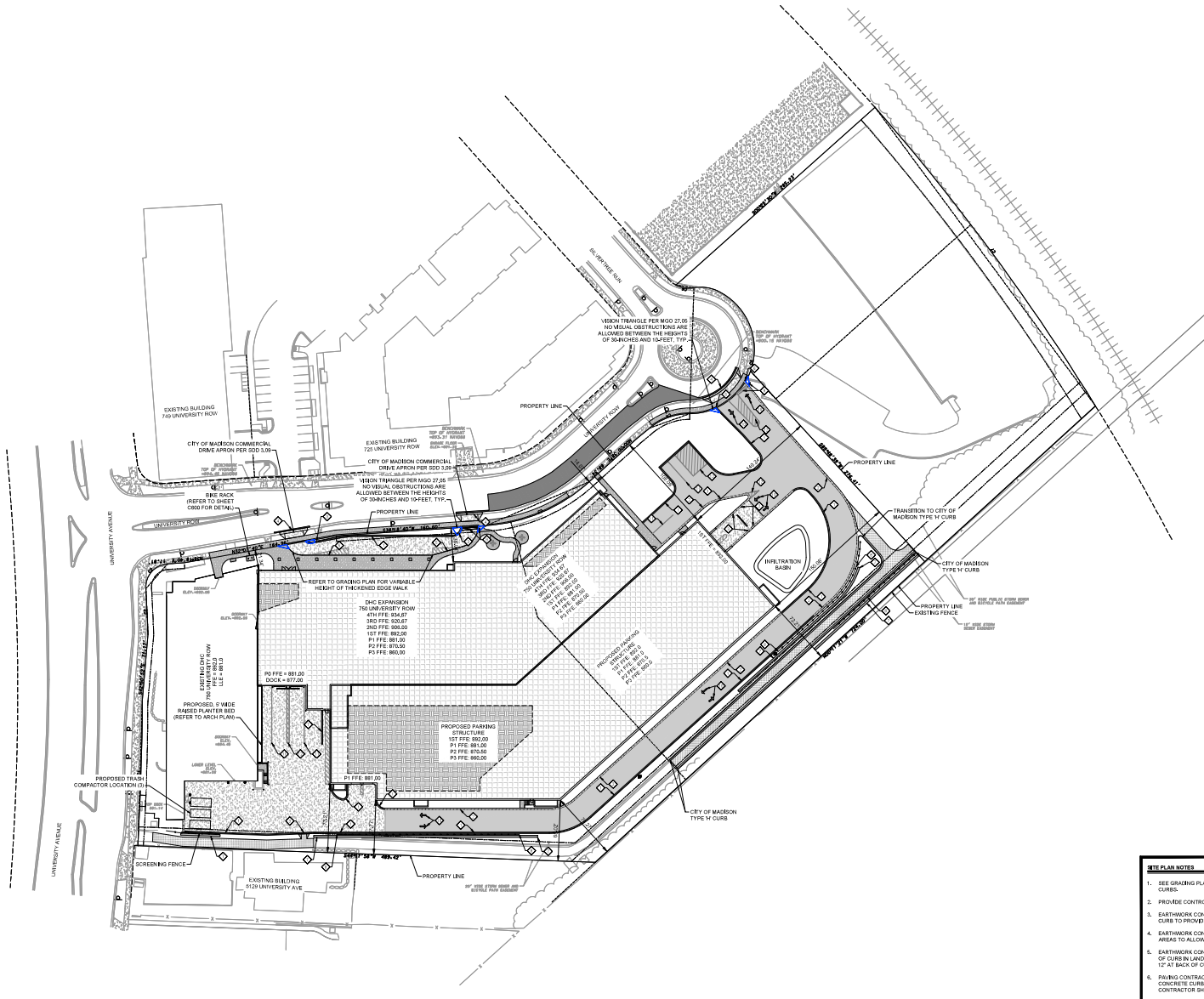
PROJECT INFORMATION
750 UNIVERSITY ROW EXPANSION

750 University Row
 Madison, WI 53705

ISSUANCE AND REVISIONS

DATE	DESCRIPTION
10/15/2024	REV. 1: ISSUE

KEY PLAN



PAVEMENT LEGEND

- ON-SITE ASPHALT PAVEMENT
 - 4" ASPHALT (2.5" BINDER, 1.5" SURFACE)
 - 4" UPPER BASE COURSE, 1/4" STONE
 - 6" LOWER BASE COURSE, 3" STONE
- CONCRETE PAVEMENT
 - 6" CONCRETE WITH MESH REINFORCEMENT
 - 8" CRUSHED AGGREGATE BASE COURSE
 - TRIMM TYPE 1, 8" MAX. GEOTEXT
- CONCRETE SIDEWALK
 - 4" CONCRETE OVER 3" GRANULAR BASE
- UNIVERSITY ROW PAVEMENT
 - 2.5" 20% SPHER, 2" SURFACE, TYPE B-1
 - 4" UPPER BASE COURSE, GRADATION 3 STONE
 - 8" LOWER BASE COURSE, GRADATION 1 STONE
- BIKE PATH PAVEMENT
 - 3" ASPHALTIC CONCRETE PAVEMENT TYPE B-1.5
 - 8" CRUSHED AGGREGATE BASE COURSE
- DEPRESSED CURBS & GUTTER
 - REJECTING PAN CURBS & GUTTER
 - ACCEPTING PAN CURBS & GUTTER

KEYNOTES

- 18" BACH CURBS & GUTTER (TYPE 2 - ACCEPTING PAN)
- 18" BACH CURBS & GUTTER (TYPE 3 - HEALTHY PAN)
- DEPRESSED CURBS & GUTTER AND CURB HEAD
- CITY OF MADISON - TYPE 'A' CURBS & GUTTER (SHELVING SECTION)
- THICKENED EDGE WALK - 6" CURB HEIGHT
- 2" CURB TERMINUS
- RETAINING WALL - DESIGNED BY OTHERS
- GUARD RAIL (30" FALL PROTECTION)
- R-14 STOP SIGN & 2" STOP BAR
- RESTRICTED LANE MARKING ARROW PER CITY OF MADISON SDC 3.18
- 4" WIDE PARKING SPACE STRIPING - TYP.
- 4" WIDE STRIPING, 2" ON-CENTER, 45-DEGREES

- SITE PLAN NOTES**
- SEE GRADING PLAN TO DETERMINE LOCATIONS OF HOLDING OR REJECT CURBS.
 - PROVIDE CONTROL JOINTS 18" MAX. O.C. PROVIDE EXPANSION JOINTS 50' O.C.
 - EARTHWORK CONTRACTOR TO SUBGRADE AND STONE 12" BEYOND BACK OF CURBS TO PROVIDE COMPACTED LEVELING BASE FOR CURBS AND GUTTER.
 - EARTHWORK CONTRACTOR TO OVER EXCAVATE/CLEAN OUT ALL LANDSCAPE AREAS TO ALLOW FOR THE PLACEMENT OF 12" OF BLACK DIRT/STONE.
 - EARTHWORK CONTRACTOR TO REMOVE ALL EXCESS STONE BEHIND BACK OF CURBS IN LANDSCAPE ISLANDS. THIS APPLIES TO EXCESS STONE BEYOND 12" AT BACK OF CURBS.
 - PAVING CONTRACTOR SHALL PROVIDE FLUSH ASPHALT PAVING TO CONCRETE CURBS. 8" SURFACE COURSE IS RAISED OVER PAVING. 18" AND CONTRACTOR SHALL HEAT UP, REMOVE AND COMPACT EXCESS PAVEMENT.
 - IF ANY ERRORS, OMISSIONS, OR DIMENSIONS WITH PLAN BECOME APPARENT, IT SHALL BE BROUGHT TO THE ATTENTION OF THE ENGINEER PRIOR TO CONSTRUCTION.
 - ALL DIMENSIONS TO FACE OF CURBS UNLESS OTHERWISE NOTED.
 - CONTRACTOR SHALL REPLACE CURBS AND GUTTER AND PAVEMENT WHICH ARE IN THE PROJECT AND IS DAMAGED BY CONSTRUCTION OR CURBS AND GUTTER WHICH THE ENGINEER DETERMINES NEEDS TO BE REPLACED BECAUSE IT IS NOT AT A DESIRABLE GRADE.
 - ALL WORK SHALL BE PER THE CITY OF MADISON STANDARD SPECIFICATIONS.
 - CONTRACTOR IS RESPONSIBLE TO OBTAIN ANY AND ALL PERMITS REQUIRED.
 - THE RIGHT-OF-WAY IS THE SOLE JURISDICTION OF THE CITY OF MADISON AND IS SUBJECT TO CHANGE AT ANYTIME PER THE RECOMMENDATION PLAN OF TRAFFIC, ENGINEERING AND CITY ENGINEERING DEPARTMENTS.
 - UPON COMPLETION, THE CITY TRAFFIC ENGINEER MAY DETERMINE A SIGN IS CONSTRUCTION OF THE STREET IS APPROPRIATE.
 - ALL WORK IN THE PUBLIC RIGHT-OF-WAY SHALL BE PERFORMED BY A CITY LICENSED CONTRACTOR.

LAND SUMMARY TABLE - 750 UNIVERSITY ROW

EXISTING LOT # AREA	102,861 SF
EXISTING BUILDING AREA	22,164 SF
PROPOSED LOT # AREA	266,692 SF
PROPOSED BUILDING EXPANSION AREA	112,703 SF
PROPOSED TOTAL BUILDING AREA	134,867 SF

SHEET INFORMATION

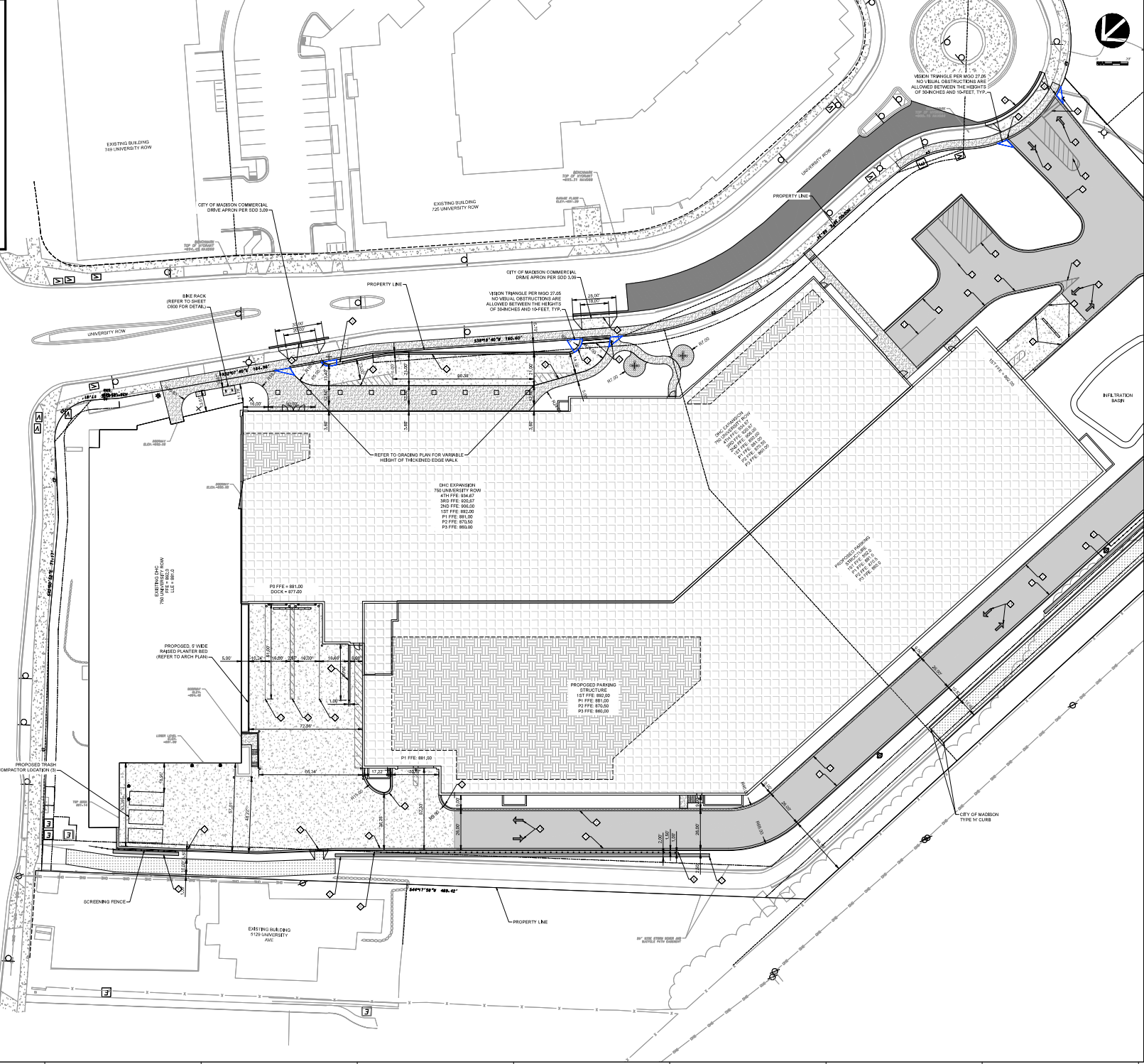
PROGRESS DOCUMENTS NOT FOR CONSTRUCTION
 These documents are prepared and used only as a guide to design. All dimensions and details shown are not for construction and shall not be used for the building or construction of any structure.

PROJECT MANAGER: RB
 PROJECT NUMBER: 422291

SITE PLAN - OVERALL
C300

- SEE PLAN NOTES**
- SEE GRADING PLAN TO DETERMINE LOCATIONS OF HOLDING OR REJECT CURBS.
 - PROVIDE CONTROL JOINTS 10'-4" O.C. PROVIDE EXPANSION JOINTS 50' O.C.
 - EARTHWORK CONTRACTOR TO SUBGRADE AND STONE 12" BEYOND BACK OF CURB TO PROVIDE COMPACTED UNDERBASE FOR CURBS AND GUTTER.
 - EARTHWORK CONTRACTOR TO COVER EXCAVATION/CLEAN OUT ALL LANDSCAPE AREAS TO ALLOW FOR THE PLACEMENT OF 12" OF BLACK BIT TOPSOIL.
 - EARTHWORK CONTRACTOR TO REMOVE ALL EXCESS STONE BEHIND BACK OF CURBS AND LANDSCAPE AREAS. THE SPACES TO EXCESS STONE BEYOND 12" AT BACK OF CURB.
 - PAVING CONTRACTOR SHALL PROVIDE TYPICAL ASPHALT FINISH TO CONCRETE CURB. IF SURFACE COURSE IS RAISED AFTER PAVING, PAVING CONTRACTOR SHALL HEAT UP, REMOVE AND COMPACT EXCESS PAVEMENT.
 - IF ANY ERASING, RECONSTRUCTION, OR DIMENSIONING WITH PLAN BECOME APPARENT, IT SHALL BE BROUGHT TO THE ATTENTION OF THE ENGINEER PRIOR TO CONSTRUCTION.
 - ALL DIMENSIONS TO FACE OF CURB UNLESS OTHERWISE NOTED.
 - CONTRACTOR SHALL REPLACE CURB AND GUTTER AND PAVEMENT WHICH ADJUTS THE PROJECT AND IS DAMAGED BY CONSTRUCTION OR CURB AND GUTTER WHEN THE CITY ENGINEER DETERMINES NEED TO BE REPLACED BEFORE TEST OF PAVEMENT.
 - ALL WORK SHALL BE PER THE CITY OF MADISON STANDARD SPECIFICATIONS.
 - CONTRACTOR IS RESPONSIBLE TO OBTAIN ANY AND ALL PERMITS REQUIRED.
 - THE RIGHT-OF-WAY IS THE SOLE JURISDICTION OF THE CITY OF MADISON AND IS SUBJECT TO CHANGE AT ANY TIME PER THE RECOMMENDATION PLAN OF TRAFFIC ENGINEERING AND CITY ENGINEERING DEPARTMENTS.
 - UPON CONSULTATION, THE CITY TRAFFIC ENGINEER MAY DETERMINE A DELAY BY CONSTRUCTION OF THE STREETS IS APPROPRIATE.
 - ALL WORK IN THE PUBLIC RIGHT-OF-WAY SHALL BE PERFORMED BY A CITY LICENSED CONTRACTOR.

- PAVEMENT LEGEND**
- ON-SITE ASPHALT PAVEMENT
 - 4" ASPHALT (2.5" BINDER, 1.5" SURFACE)
 - 4" UPPER BASE COURSE, 1/4" STONE
 - 4" LOWER BASE COURSE, 3" STONE
 - CONCRETE PAVEMENT
 - CONCRETE W/WEAR WEAR REINFORCEMENT
 - CRUSHED AGGREGATE BASE COURSE
 - 18" TYPE 1: 18" W/4" GROUND
 - CONCRETE SIDEWALK
 - CONCRETE OVER 3" GRANULAR BASE
 - UNIVERSITY ROW PAVEMENT
 - 2.5" (2.5" BINDER, 2" SURFACE, TYPE 5-1)
 - 4" UPPER BASE COURSE, GRANULATION STONE
 - 4" LOWER BASE COURSE, GRANULATION STONE
 - BIKE PATH PAVEMENT
 - 3" ASPHALT TO CONCRETE PAVEMENT, TYPE 5-1
 - CRUSHED AGGREGATE BASE COURSE
 - DEPRESSED CURB & GUTTER
 - REJECTING PAN CURB & GUTTER
 - ACCEPTING PAN CURB & GUTTER
- KEYNOTES**
- 18-INCH CURB & GUTTER (TYPE D - ACCEPTING PAN)
 - 18-INCH CURB & GUTTER (TYPE E - REJECTING PAN)
 - DEPRESSED CURB & GUTTER (NO CURB HEAD)
 - CITY OF MADISON - TYPE 'A' CURB & GUTTER (SLOPED) SECTION
 - THICKENED EDGE WALK - 6" CURB HEIGHT
 - 2" CURB TERMINUS
 - RETAINING WALL - DESIGNED BY OTHERS
 - GUARD RAIL (50' FALL PROTECTING)
 - R1-1 STOP SIGN & 24" STOP BAR
 - RESTRICTED LANE MARKING ARROW PER CITY OF MADISON 500.5.9
 - 4" WIDE PARKING SPACE STRIPING - TYP.
 - 4" WIDE STRIPING, 2" ON-CENTER, 45-DEGREE



eu.a

750 University Row Expansion
 339 East Chicago Street
 Madison, WI 53702
 (608) 278-1300
 www.eu.a.com

LWHealth

KRUPP

GENERAL CONTRACTORS

D'AMICO ENGINEERING & ARCHITECTURE, INC.

7135 Rowland Way, Madison, WI 53719
 Phone: (608) 278-1300 • Fax: (608) 278-1301
 Web: www.damico.com

PROJECT INFORMATION

750 UNIVERSITY ROW EXPANSION

750 University Row
 Madison, WI 53705

ISSUANCE AND REVISIONS

DATE	DESCRIPTION
08/08/2018	REV 1: PRELIM

KEY PLAN

SHEET INFORMATION

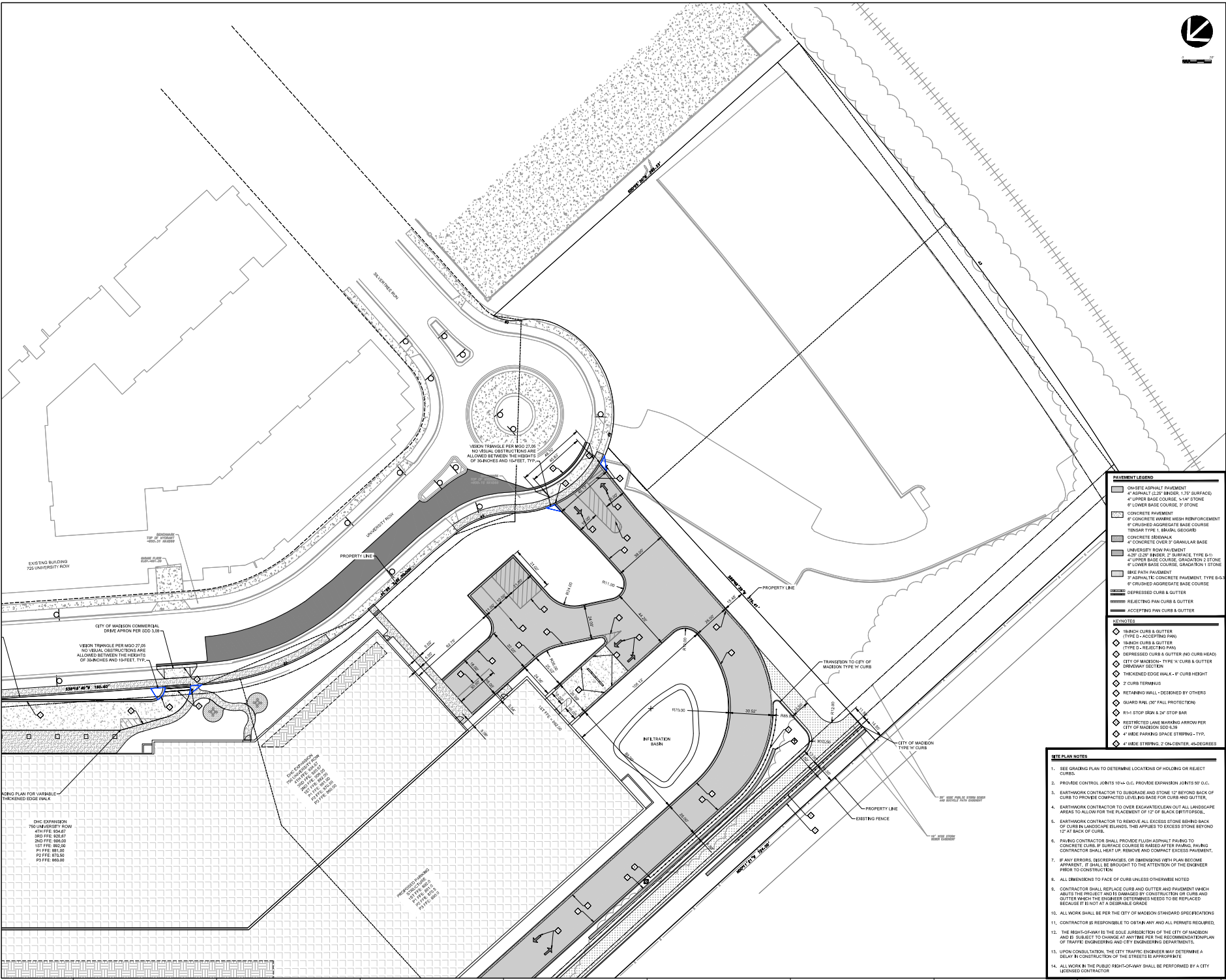
PROGRESS DOCUMENTS NOT FOR CONSTRUCTION

These documents are prepared and used only for informational purposes and are not intended to be used for construction. They are not to be used for construction and shall not be used for any other purpose without the written consent of the engineer.

PROJECT MANAGER: RB
 PROJECT NUMBER: 422291

SITE PLAN - NORTH

C301



VISION TRIANGLE PER MGD 27.05
 NO VISUAL OBSTRUCTIONS ARE
 ALLOWED BETWEEN THE HEIGHTS
 OF 30 INCHES AND 15 FEET, TYP.

CITY OF MADISON COMMERCIAL
 DRIVE APRON PER SDD 3.05
 VISION TRIANGLE PER MGD 27.05
 NO VISUAL OBSTRUCTIONS ARE
 ALLOWED BETWEEN THE HEIGHTS
 OF 30 INCHES AND 15 FEET, TYP.

PAVEMENT LEGEND

- ON-SITE ASPHALT PAVEMENT
- 4" ASPHALT (2.5" BINDER, 1.5" SURFACE)
- 4" UPPER BASE COURSE, 1/4" STONE
- 8" LOWER BASE COURSE, 3" STONE
- CONCRETE PAVEMENT
- 8" CONCRETE W/ WIRE MESH REINFORCEMENT
- 8" CRUSHED AGGREGATE BASE COURSE
- 10" GRADE TYPE 1, 1/4" SAND, GEOTEXTILE
- CONCRETE SIDEWALK
- 4" CONCRETE OVER 3" GRANULAR BASE
- UNIVERSITY ROW PAVEMENT
- 4.5" 2" 20" SPREAD, 2" SURFACE, TYPE 0-1
- 4" UPPER BASE COURSE, GRADEATION 1 STONE
- 8" LOWER BASE COURSE, GRADEATION 1 STONE
- BASE PATH PAVEMENT
- 3" ASPHALT, CONCRETE PAVEMENT, TYPE 0-1.5
- 8" CRUSHED AGGREGATE BASE COURSE
- DEPRESSED CURB & GUTTER
- REJECTING PAN CURB & GUTTER
- ACCEPTING PAN CURB & GUTTER

KEYNOTES

- 18" BACH CURB & GUTTER (TYPE 2 - ACCEPTING PAN)
- 18" BACH CURB & GUTTER (TYPE 0 - HEALTHY PAV)
- DEPRESSED CURB & GUTTER AND CURB HEAD
- CITY OF MADISON - TYPE "A" CURB & GUTTER (SLOWDOWN SECTION)
- THICKENED EDGE WALK - 6" CURB HEIGHT
- 2 CURB TERMINUS
- RETAINING WALL - DESIGNED BY OTHERS
- GUARD RAIL (30' FALL PROTECTION)
- R1+ STOP SIGN & 2" STOP BAR
- RESTRICTED LANE MARKING ARROW PER CITY OF MADISON SDD 3.08
- 4" WIDE PARKING SPACE STRIPING - TYP.
- 4" WIDE STRIPING, 2" ON-CENTER, 45-DEGREE

- SITE PLAN NOTES**
- SEE GRADING PLAN TO DETERMINE LOCATIONS OF HOLDING OR REJECT CURB.
 - PROVIDE CONTROL JOINTS 15'-4" O.C. PROVIDE EXPANSION JOINTS 50' O.C.
 - EARTHWORK CONTRACTOR TO SUBGRADE AND STONE 12" BEYOND BACK OF CURB TO PROVIDE COMPACTED LEVELING BASE FOR CURB AND GUTTER.
 - EARTHWORK CONTRACTOR TO OVER EXCAVATE/CLEAN OUT ALL LANDSCAPE AREAS TO ALLOW FOR THE PLACEMENT OF 12" OF BLACK BITUMSTONE.
 - EARTHWORK CONTRACTOR TO REMOVE ALL EXCESS STONE BEHIND BACK OF CURB OR LANDSCAPE ISLANDS. THIS APPLIES TO EXCESS STONE BEYOND 12" OF BACK OF CURB.
 - PAVING CONTRACTOR SHALL PROVIDE FLUSH ASPHALT PAVING TO CONCRETE CURB. 8" SURFACE COURSE IS MAILED AFTER PAVING. SUB AND CONTRACTOR SHALL HEAT UP, REMOVE AND COMPACT EXCESS PAVEMENT.
 - IF ANY ERRORS, DISCREPANCIES, OR DIMENSIONING WITH PLAN BECOME APPARENT, IT SHALL BE BROUGHT TO THE ATTENTION OF THE ENGINEER PRIOR TO CONSTRUCTION.
 - ALL DIMENSIONS TO FACE OF CURB UNLESS OTHERWISE NOTED.
 - CONTRACTOR SHALL REPLACE CURB AND GUTTER AND PAVEMENT WHICH AFFECTS THE PROJECT AND IS DAMAGED BY CONSTRUCTION OR CURB AND GUTTER WHICH THE ENGINEER DETERMINES NEEDS TO BE REPLACED BECAUSE IT IS NOT AT A DESIRABLE GRADE.
 - ALL WORK SHALL BE PER THE CITY OF MADISON STANDARD SPECIFICATIONS.
 - CONTRACTOR IS RESPONSIBLE TO OBTAIN ANY AND ALL PERMITS REQUIRED.
 - THE RIGHT-OF-WAY IS THE SOLE JURISDICTION OF THE CITY OF MADISON AND IS SUBJECT TO CHANGE AT ANY TIME PER THE RECOMMENDATION PLAN OF TRAFFIC, ENGINEERING AND CITY ENGINEERING DEPARTMENTS.
 - UPON CONSULTATION, THE CITY TRAFFIC ENGINEER MAY DETERMINE A SEQUENTIAL CONSTRUCTION OF THE STREETS IS APPROPRIATE.
 - ALL WORK IN THE PUBLIC RIGHT-OF-WAY SHALL BE PERFORMED BY A CITY LICENSED CONTRACTOR.

LAND PLAN FOR VARIABLE THICKENED EDGE WALK

ONC EXPANSION
 750 UNIVERSITY ROW
 50' FFE: 50.00'
 50' FFE: 50.00'
 50' FFE: 50.00'
 50' FFE: 50.00'
 50' FFE: 50.00'
 50' FFE: 50.00'

UNIVERSITY ROW (W/ADJ)
 50' FFE: 50.00'
 50' FFE: 50.00'
 50' FFE: 50.00'





339 East Chicago Street
 Madison, WI 53702
 (608) 278-5300
 www.eua.com



3750 Raymond Ave., Madison, WI 53707
 Phone: (608) 770-1100 • Fax: (608) 770-1100
 Web: www.krupp.com

PROJECT INFORMATION

750 UNIVERSITY ROW EXPANSION

750 University Row
 Madison, WI 53705

ISSUANCE AND REVISIONS

DATE	DESCRIPTION
REVISION	REVISED

KEY PLAN

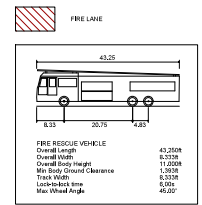
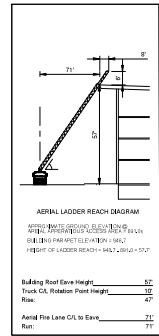
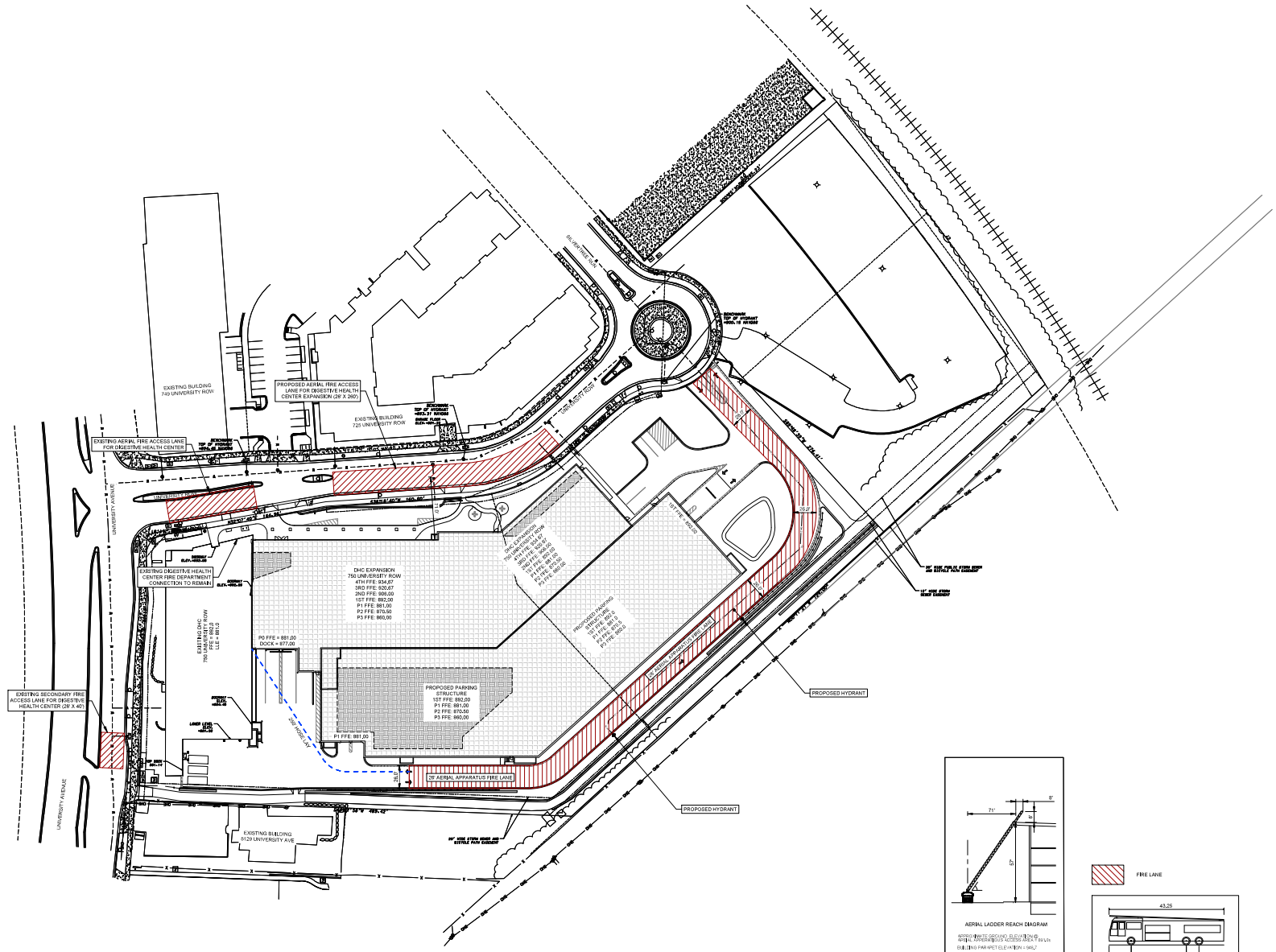
SHEET INFORMATION

PROGRESS DOCUMENTS NOT FOR CONSTRUCTION
 These documents are progress and shall not be used for construction. All drawings and specifications shall be used for construction. The drawings and specifications shall be used for construction.

PROJECT MANAGER RB
 PROJECT NUMBER 422291

FIRE ACCESS PLAN

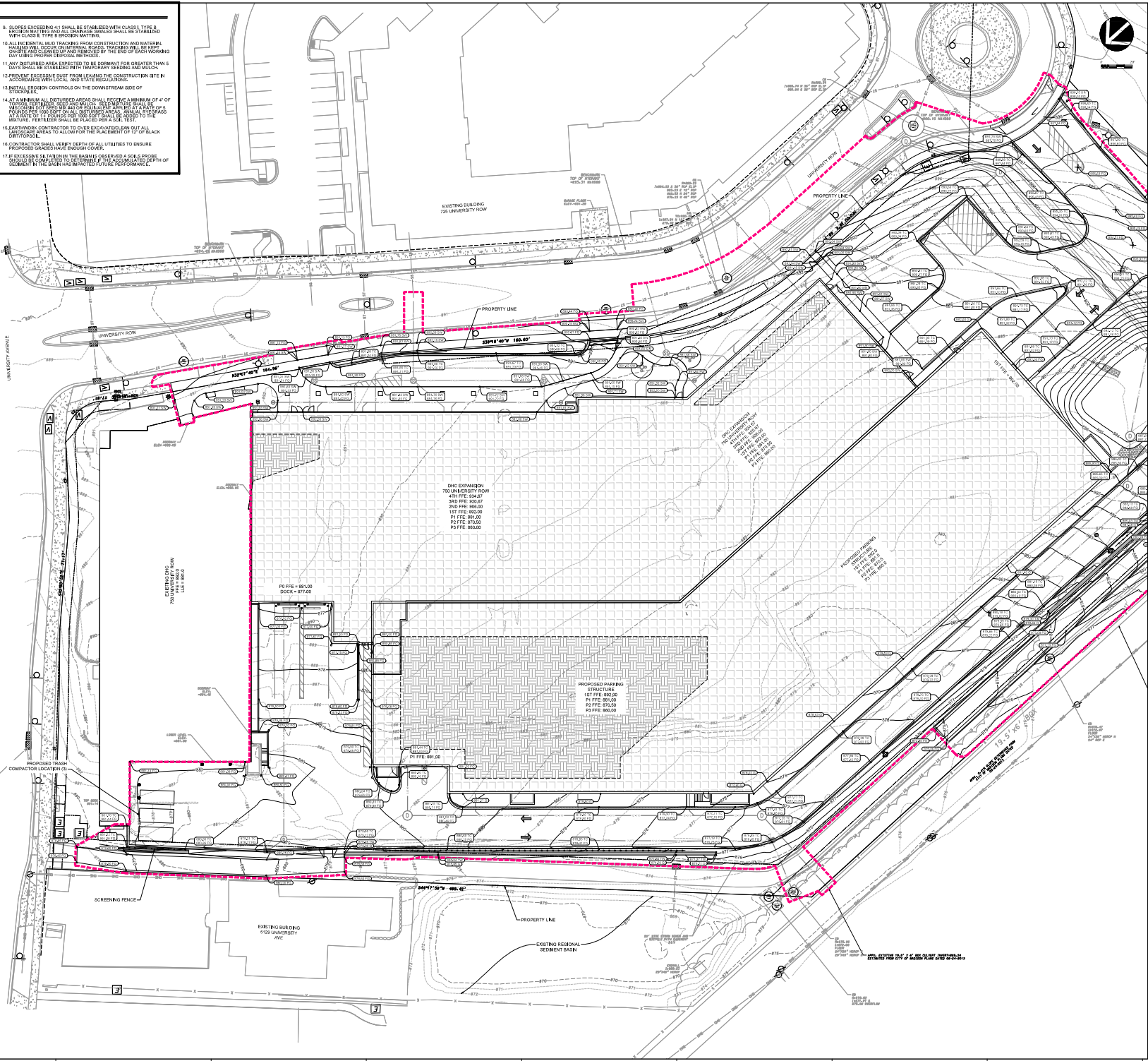
C303



- GRADING AND EROSION CONTROL NOTES:**
1. ALL EROSION CONTROL MEASURES SHALL BE CONSTRUCTED AND MAINTAINED BY THE CONTRACTOR IN ACCORDANCE WITH THE AMERICAN SOCIETY OF CIVIL ENGINEERS (ASCE) 229.1-1992, CHAPTER 10, RESPONSIBILITY TO CONTRACTOR FOR THESE MEASURES.
 2. INSTALL EROSION CONTROL MEASURES PRIOR TO ANY SITE WORK. MATERIALS AS SHOWN ON PLAN, WHEN EXPOSED TO SEDIMENT CONTROL MEASURES, SHALL BE PROTECTED BY EROSION CONTROL MEASURES. EROSION CONTROL MEASURES SHALL BE MAINTAINED TO PREVENT EROSION FROM OCCURRING.
 3. EROSION CONTROL MEASURES INDICATED ON THE PLAN SHALL BE CONSTRUCTED IMMEDIATELY UPON THE COMPLETION OF THE WORK. EROSION CONTROL MEASURES SHALL BE MAINTAINED THROUGHOUT THE CONSTRUCTION PERIOD. EROSION CONTROL MEASURES SHALL BE MAINTAINED THROUGHOUT THE CONSTRUCTION PERIOD. EROSION CONTROL MEASURES SHALL BE MAINTAINED THROUGHOUT THE CONSTRUCTION PERIOD.
 4. EROSION CONTROL MEASURES SHALL BE MAINTAINED THROUGHOUT THE CONSTRUCTION PERIOD. EROSION CONTROL MEASURES SHALL BE MAINTAINED THROUGHOUT THE CONSTRUCTION PERIOD. EROSION CONTROL MEASURES SHALL BE MAINTAINED THROUGHOUT THE CONSTRUCTION PERIOD.
 5. EROSION CONTROL MEASURES SHALL BE MAINTAINED THROUGHOUT THE CONSTRUCTION PERIOD. EROSION CONTROL MEASURES SHALL BE MAINTAINED THROUGHOUT THE CONSTRUCTION PERIOD. EROSION CONTROL MEASURES SHALL BE MAINTAINED THROUGHOUT THE CONSTRUCTION PERIOD.
 6. EROSION CONTROL MEASURES SHALL BE MAINTAINED THROUGHOUT THE CONSTRUCTION PERIOD. EROSION CONTROL MEASURES SHALL BE MAINTAINED THROUGHOUT THE CONSTRUCTION PERIOD. EROSION CONTROL MEASURES SHALL BE MAINTAINED THROUGHOUT THE CONSTRUCTION PERIOD.
 7. EROSION CONTROL MEASURES SHALL BE MAINTAINED THROUGHOUT THE CONSTRUCTION PERIOD. EROSION CONTROL MEASURES SHALL BE MAINTAINED THROUGHOUT THE CONSTRUCTION PERIOD. EROSION CONTROL MEASURES SHALL BE MAINTAINED THROUGHOUT THE CONSTRUCTION PERIOD.
 8. EROSION CONTROL MEASURES SHALL BE MAINTAINED THROUGHOUT THE CONSTRUCTION PERIOD. EROSION CONTROL MEASURES SHALL BE MAINTAINED THROUGHOUT THE CONSTRUCTION PERIOD. EROSION CONTROL MEASURES SHALL BE MAINTAINED THROUGHOUT THE CONSTRUCTION PERIOD.
 9. FLOORS EXCEEDING 4" SHALL BE STABILIZED WITH CLASS 1 TYPE 1. EROSION CONTROL MEASURES SHALL BE MAINTAINED THROUGHOUT THE CONSTRUCTION PERIOD. EROSION CONTROL MEASURES SHALL BE MAINTAINED THROUGHOUT THE CONSTRUCTION PERIOD. EROSION CONTROL MEASURES SHALL BE MAINTAINED THROUGHOUT THE CONSTRUCTION PERIOD.
 10. ALL INCIDENTAL AND TRASH FROM CONSTRUCTION AND MATERIAL HANDLING SHALL BE COLLECTED AND REMOVED BY THE END OF EACH WORKING DAY USING PROPER EROSION CONTROL METHODS.
 11. ANY DISTURBED AREA EXPECTED TO BE SOILBORN FOR GREATER THAN 5 DAYS SHALL BE COVERED WITH PROPER SEEDING AND MULCH.
 12. PREVENT EXCESSIVE DUST FROM LEAVING THE CONSTRUCTION SITE BY ACCORDANCE WITH LOCAL AND STATE REGULATIONS.
 13. INSTALL EROSION CONTROLS ON THE DOWNSTREAM SIDE OF SLOPES.
 14. AT A MINIMUM ALL DISTURBED AREAS SHALL RECEIVE A MINIMUM OF 4" OF VEGETATION. THE VEGETATION SHALL BE MAINTAINED AT A RATE OF 100% OF THE ORIGINAL VEGETATION. VEGETATION SHALL BE MAINTAINED AT A RATE OF 100% OF THE ORIGINAL VEGETATION. VEGETATION SHALL BE MAINTAINED AT A RATE OF 100% OF THE ORIGINAL VEGETATION.
 15. EARTHWORK CONTRACTOR TO OVER EXCAVATE FOR DRAINAGE DITCHES TO ALLOW FOR THE PLACEMENT OF 12" OF BLACK SANDSTONE. FILL SHALL BE PLACED TO THE FINISH GRADE.
 16. CONTRACTOR SHALL VERIFY DEPTH OF ALL UTILITY TO ENSURE PROPOSED CHANNELS TO ALLOW FOR THE PLACEMENT OF 12" OF BLACK SANDSTONE. FILL SHALL BE PLACED TO THE FINISH GRADE.
 17. IF EXCESSIVE SETTLEMENT IS OBSERVED A SOIL PROBE SHALL BE CONDUCTED TO VERIFY THE ACCUMULATED DEPTH OF SETTLEMENT & THE BULKY IMPACTED FUTURE PERFORMANCE.

- GRADING PLAN LEGEND**
- PROPOSED CONTOURS
 - EXISTING CONTOURS
 - DISTURBED AREA
 - SPOT GRADE - TOP (BACK) OF CURB
 - SPOT GRADE - TOP OF WALL
 - SPOT GRADE - FINISH GRADE (PAVEMENT)
 - SPOT GRADE - SIDEWALK FINISH GRADE
 - SPOT GRADE - GROUND (BOTTOM OF WALL)

LIMITS OF DISTURBANCE = 239,030 SQ FT
= 5.49 AC



750 University Row, Madison, WI 53702
Phone: (608) 271-5300
Fax: (608) 271-5300

PROJECT INFORMATION
750 UNIVERSITY ROW EXPANSION

750 University Row
Madison, WI 53705

ISSUANCE AND REVISIONS

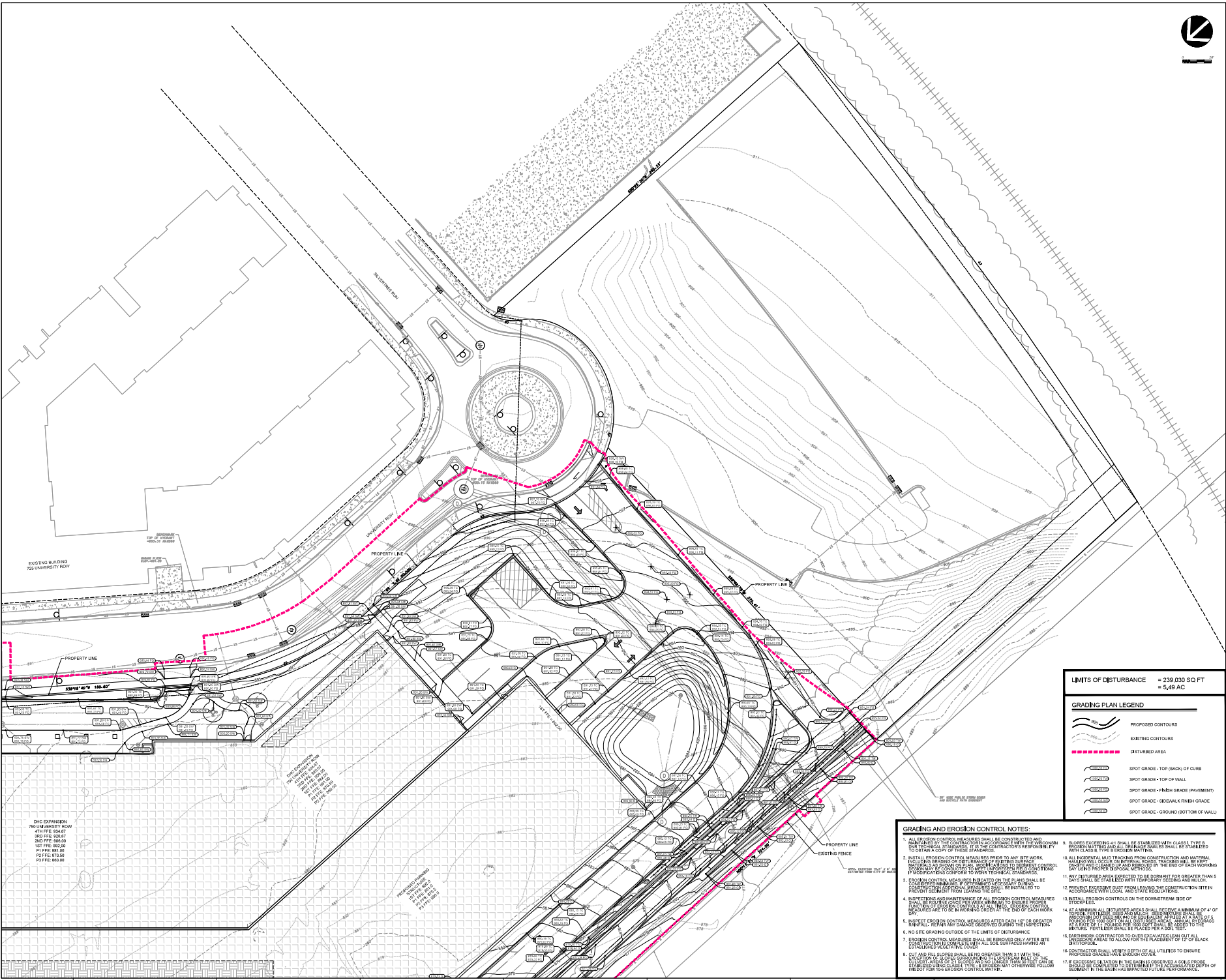
DATE	DESCRIPTION
REVISION	REV A: REVISION

KEY PLAN

SHEET INFORMATION
PROGRESS DOCUMENTS NOT FOR CONSTRUCTION
These documents are prepared and used only for informational purposes and are not intended to be used for construction. They are not to be used for construction purposes and shall not be used for any other purpose without the written consent of the engineer.

PROJECT MANAGER: RB
PROJECT NUMBER: 422291

GRADING PLAN - NORTH
C401



LIMITS OF DISTURBANCE = 239,030 SQ FT = 5.49 AC

GRADING PLAN LEGEND

- PROPOSED CONTOURS
- EXISTING CONTOURS
- DISTURBED AREA
- SPOT GRADE - TOP/BACK OF CURB
- SPOT GRADE - TOP OF WALL
- SPOT GRADE - FINISH GRADE (PAVEMENT)
- SPOT GRADE - SIDEWALK FINISH GRADE
- SPOT GRADE - GROUND (BOTTOM OF WALL)

GRADING AND EROSION CONTROL NOTES:

- ALL EROSION CONTROL MEASURES SHALL BE CONSTRUCTED AND MAINTAINED BY THE CONTRACTOR IN ACCORDANCE WITH THE CONDITIONS TO OBTAIN A COPY OF THESE STANDARDS.
- EROSION CONTROL MEASURES SHALL BE CONSTRUCTED AND MAINTAINED BY THE CONTRACTOR IN ACCORDANCE WITH THE STANDARDS TO OBTAIN A COPY OF THESE STANDARDS.
- EROSION CONTROL MEASURES INDICATED ON THE PLANS SHALL BE CONSTRUCTED IMMEDIATELY UPON COMMENCEMENT OF CONSTRUCTION AND MAINTAINED THROUGHOUT THE PROJECT.
- NO SITE GRADING OUTSIDE OF THE LIMITS OF DISTURBANCE.
- EROSION CONTROL MEASURES SHALL BE REMOVED ONLY AFTER THE SITE IS RESTORED TO ORIGINAL OR BETTER CONDITION.
- CUT AND FILL SLOPES SHALL BE NO GREATER THAN 3:1 WITH THE EXCEPTION OF SLOPES EXCEEDING THE UPPER LIMIT OF CUT AND FILL SLOPES SHALL BE NO GREATER THAN 1:1.
- EROSION CONTROL MEASURES SHALL BE CONSTRUCTED IMMEDIATELY UPON COMMENCEMENT OF CONSTRUCTION AND MAINTAINED THROUGHOUT THE PROJECT.
- SLOPES EXCEEDING 4:1 SHALL BE STABILIZED WITH CLASS I TYPE B EROSION MATTING AND CLASS II TYPE B EROSION MATTING.
- ALL INCIDENTAL AND TRAILING FROM CONSTRUCTION AND SOIL EROSION SHALL BE REMOVED FROM THE SITE OF WORK BY THE END OF EACH WORKING DAY USING PROPER DISPOSAL METHODS.
- ANY DISTURBED AREA EXPOSED TO BE SOAKING FOR GREATER THAN 14 DAYS SHALL BE STABILIZED WITH TEMPORARY SEEDING AND MULCH.
- CONSTRUCTION OF EROSION CONTROL MEASURES SHALL BE APPROVED BY LOCAL AND STATE REGULATIONS.
- CONSTRUCTION OF EROSION CONTROL MEASURES SHALL BE APPROVED BY LOCAL AND STATE REGULATIONS.
- CONSTRUCTION OF EROSION CONTROL MEASURES SHALL BE APPROVED BY LOCAL AND STATE REGULATIONS.
- CONSTRUCTION OF EROSION CONTROL MEASURES SHALL BE APPROVED BY LOCAL AND STATE REGULATIONS.
- CONSTRUCTION OF EROSION CONTROL MEASURES SHALL BE APPROVED BY LOCAL AND STATE REGULATIONS.
- CONSTRUCTION OF EROSION CONTROL MEASURES SHALL BE APPROVED BY LOCAL AND STATE REGULATIONS.
- CONSTRUCTION OF EROSION CONTROL MEASURES SHALL BE APPROVED BY LOCAL AND STATE REGULATIONS.
- CONSTRUCTION OF EROSION CONTROL MEASURES SHALL BE APPROVED BY LOCAL AND STATE REGULATIONS.

ONE EXPANSION
750 UNIVERSITY ROW
2ND FLOOR
2ND FLOOR
1ST FLOOR
1ST FLOOR
1ST FLOOR
1ST FLOOR

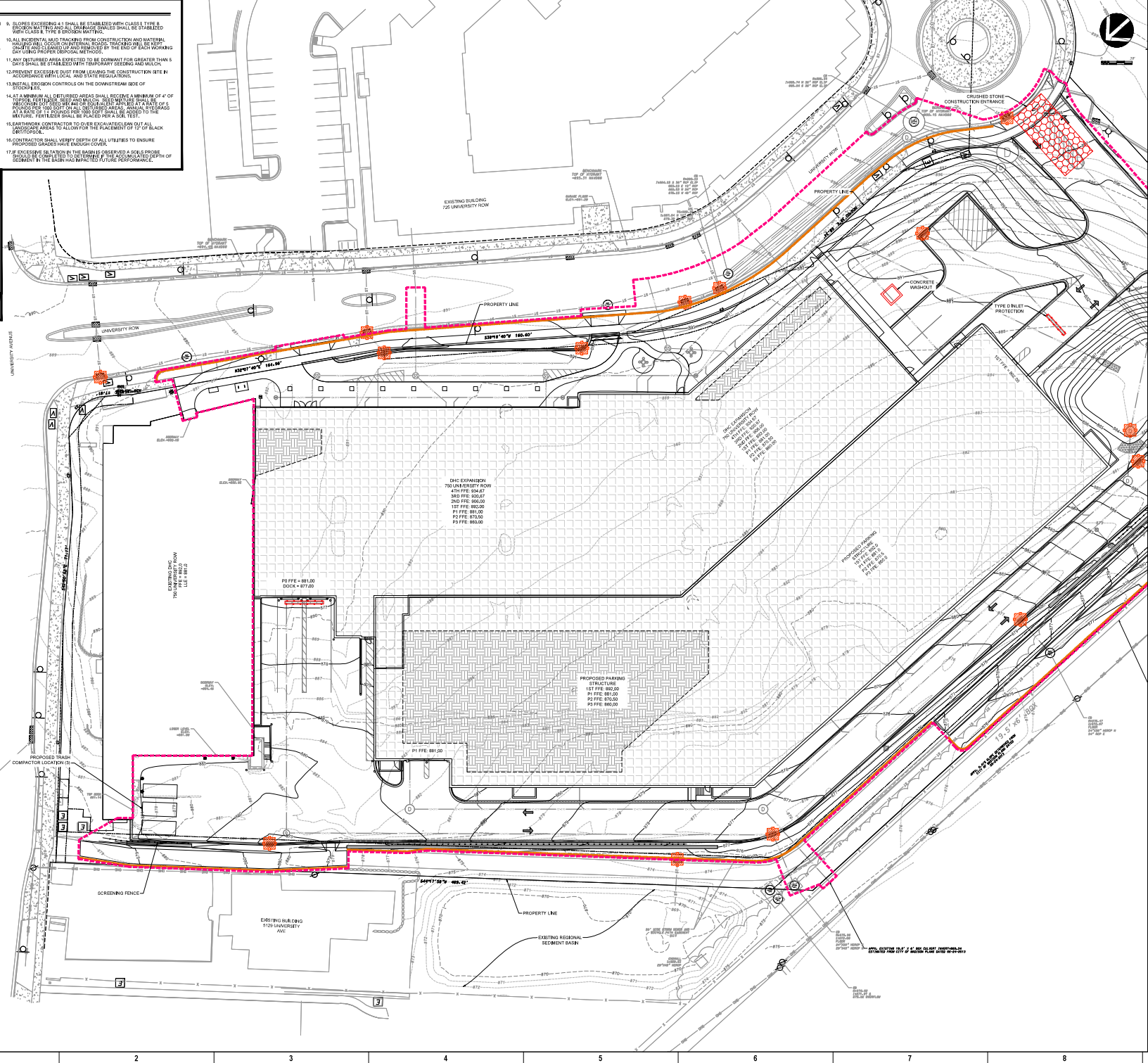
GRADING AND EROSION CONTROL NOTES:

1. ALL EROSION CONTROL MEASURES SHALL BE CONSTRUCTED AND MAINTAINED BY THE CONTRACTOR IN ACCORDANCE WITH THE UNDERGROUND UTILITY RECORD DRAWING. IT IS THE CONTRACTOR'S RESPONSIBILITY TO OBTAIN A COPY OF THIS RECORD DRAWING.
2. INSTALL EROSION CONTROL MEASURES PRIOR TO ANY SITE WORK. MATERIALS AS SHOWN ON PLAN WHEN LAID TO GROUND SHALL BE CONSIDERED TO BE CONSTRUCTION MATERIALS UNLESS OTHERWISE NOTED. EROSION CONTROL MEASURES SHALL CONFORM TO WISCONSIN TECHNICAL STANDARDS.
3. EROSION CONTROL MEASURES INDICATED ON THE PLAN SHALL BE CONSIDERED MINIMUMS. IF DETERMINED NECESSARY DURING PRELIMINARY FIELD SURVEY THE OWNER SHALL BE NOTIFIED TO PROVIDE ADDITIONAL MEASURES.
4. INSPECTION AND MAINTENANCE OF ALL EROSION CONTROL MEASURES SHALL BE THE RESPONSIBILITY OF THE CONTRACTOR. EROSION CONTROL MEASURES ARE TO BE MAINTAINED THROUGHOUT THE CONSTRUCTION PERIOD.
5. INSPECT EROSION CONTROL MEASURES AFTER EACH 1/2" OR GREATER INFALL. REPAIR ANY DAMAGE OBSERVED DURING THE INSPECTION.
6. NO SITE GRADING OUTSIDE OF THE LIMITS OF DISTURBANCE.
7. EROSION CONTROL MEASURES SHALL BE REMOVED ONLY AFTER SITE WORK IS COMPLETED AND ALL SURFACES HAVE BEEN ESTABLISHED WITH VEGETATIVE COVER.
8. ANY EROSION CONTROL MEASURES SHALL BE MAINTAINED THROUGHOUT THE CONSTRUCTION PERIOD. IF ANY DAMAGE TO EROSION CONTROL MEASURES IS OBSERVED, THE CONTRACTOR SHALL IMMEDIATELY REPAIR OR REPLACE THE MEASURES TO MAINTAIN THE EROSION CONTROL SYSTEM.
9. FLOORS EXCEEDING 4" SHALL BE STABILIZED WITH CLASS 1 TYPE 1 FLOORING. FLOORING SHALL BE STABILIZED WITH CLASS 1 TYPE 1 FLOORING.
10. ALL INCIDENTAL AND TRACKING FROM CONSTRUCTION AND MATERIAL HANDLING SHALL BE CLEANED UP AND REMOVED BY THE END OF EACH WORKING DAY USING PROPER EROSION CONTROL METHODS.
11. ANY DISTURBED AREA EXPOSED TO BE SOAKED FOR GREATER THAN 5 DAYS SHALL BE COVERED WITH STRAW SEEDING AND MULCH.
12. PREVENT EXCESSIVE DIRT FROM LEAVING THE CONSTRUCTION SITE IN ACCORDANCE WITH LOCAL AND STATE REGULATIONS.
13. INSTALL EROSION CONTROLS ON THE DOWNSTREAM SIDE OF STOPS.
14. AT A MINIMUM ALL DISTURBED AREAS SHALL RECEIVE A MINIMUM OF 4" OF MULCH OR TURF. MULCH OR TURF SHALL BE APPLIED AT A RATE OF 100 LBS PER 1000 SQ FT. MULCH SHALL BE APPLIED AT A RATE OF 100 LBS PER 1000 SQ FT. MULCH SHALL BE APPLIED AT A RATE OF 100 LBS PER 1000 SQ FT.
15. EARTHWORK CONTRACTOR TO OVER EXCAVATE/FILL OUT ALL DISTURBED AREAS TO ALLOW FOR THE REACHMENT OF 1" OF BLACK TOP.
16. CONTRACTOR SHALL VERIFY DEPTH OF ALL UTILITIES TO ENSURE PROPOSED GRADING IS ABOVE ALL UTILITIES.
17. IF EXCESSIVE SETTLEMENT IN THE BARNER OBSERVED A SOIL PROBE SHALL BE CONDUCTED TO DETERMINE THE ACCUMULATED DEPTH OF SETTLEMENT IN THE BARNER IMPACTED FUTURE PERFORMANCE.

GRADING PLAN LEGEND

- PROPOSED CONTOURS
- EXISTING CONTOURS
- DISTURBED AREA
- SET SOCK OR SILT FENCE
- CONSTRUCTION ENTRANCE PER WDMR-1057
- INLET PROTECTION PER WDMR-1060
- TYPE C OR D - INLET PROTECTION

LIMITS OF DISTURBANCE = 239,030 SQ FT
= 5.49 AC



eu
339 East Chicago Street
Madison, WI 53702
(608) 271-5300
www.eua.com

LWHealth
KRUPP
GENERAL CONTRACTORS

750 University Row, Madison, WI 53707
Phone: (608) 271-5300 x. 400
www.eua.com

PROJECT INFORMATION

750 UNIVERSITY ROW EXPANSION

750 University Row
Madison, WI 53705

ISSUANCE AND REVISIONS

DATE	DESCRIPTION
REVISION	REV. 1

KEY PLAN

SHEET INFORMATION

PROGRESS DOCUMENTS NOT FOR CONSTRUCTION

These documents are for review and information only. They are not to be used for construction. The contractor shall verify all dimensions and locations on the ground before construction.

PROJECT MANAGER: RB
PROJECT NUMBER: 42291

EROSION CONTROL PLAN - NORTH

C403



339 East Chicago Street
Madison, WI 53702
(608) 278-5300
www.eua.com

LWHealth

KRUPP
GENERAL CONTRACTORS

5755 Raymond Ave., Madison, WI 53707
Phone: (608) 770-1100 • Fax: (608) 770-1100
Web: www.krupp.com

PROJECT INFORMATION

750 UNIVERSITY ROW EXPANSION

750 University Row
Madison, WI 53705

ISSUANCE AND REVISIONS

DATE	DESCRIPTION
08/08/2018	REV. 1: PRELIMINARY

KEY PLAN

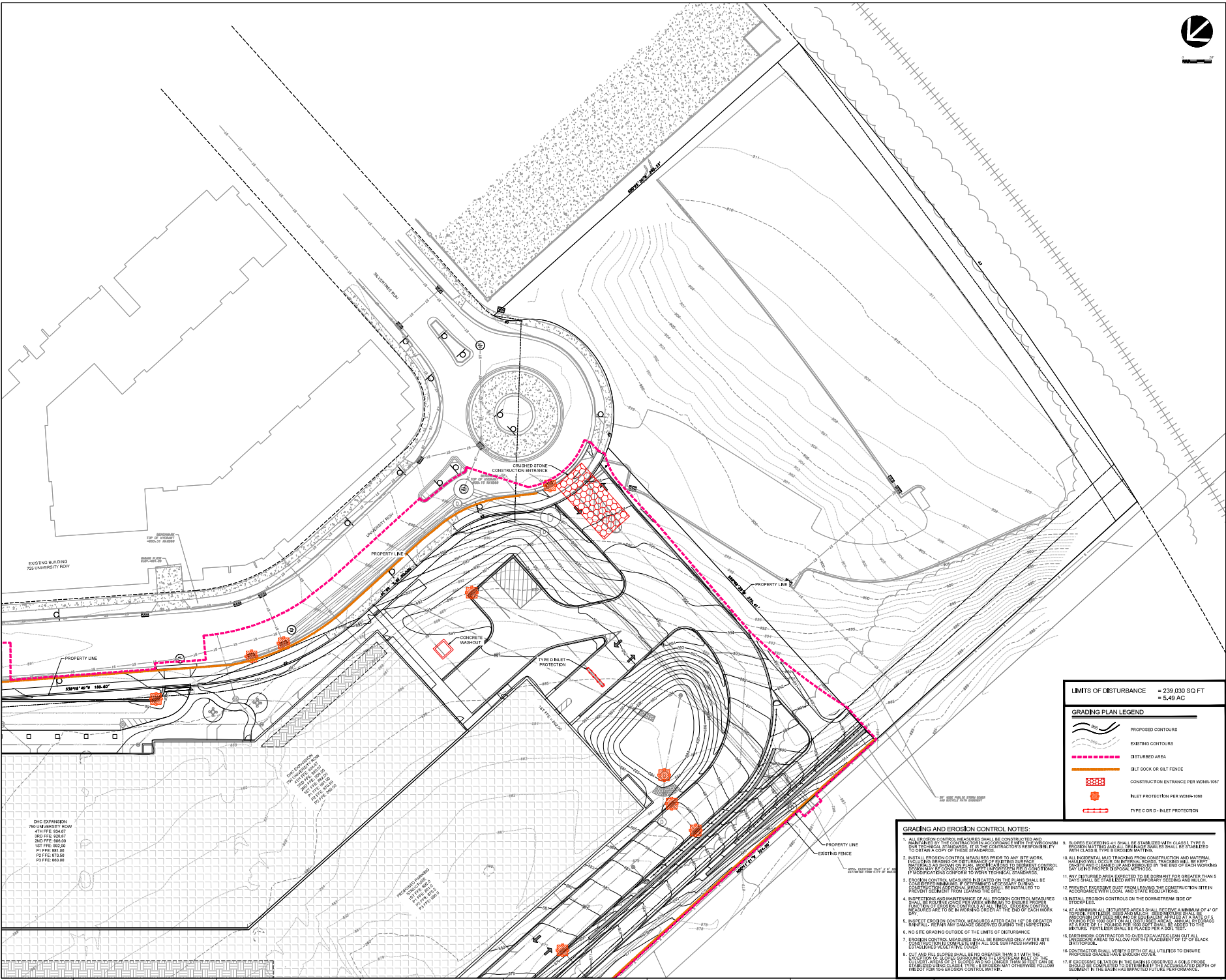
SHEET INFORMATION

PROGRESS DOCUMENTS NOT FOR CONSTRUCTION
These documents are preliminary and are not to be used for construction. They are subject to change without notice and shall not be used for any construction or other purposes.

PROJECT MANAGER: RB
PROJECT NUMBER: 422291

EROSION CONTROL PLAN - SOUTH

C404



LIMITS OF DISTURBANCE = 239,030 SQ FT = 5.49 AC

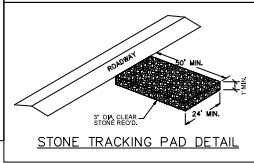
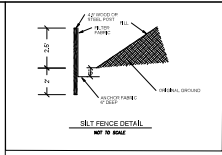
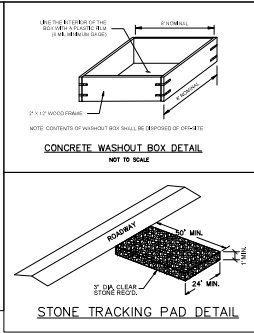
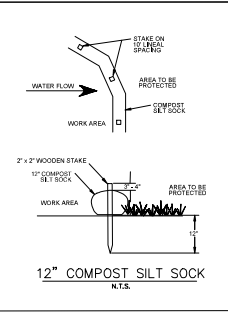
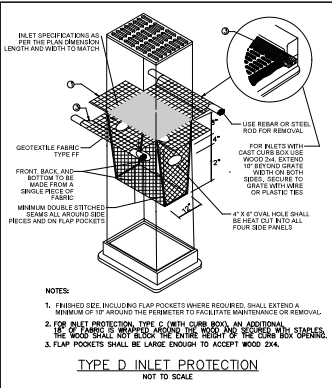
GRADING PLAN LEGEND

- PROPOSED CONTOURS
- EXISTING CONTOURS
- DISTURBED AREA
- SILT SOCK OR SILT FENCE
- CONSTRUCTION ENTRANCE PER VDOT-1007
- INLET PROTECTION PER VDOT-1000
- TYPE C OR D INLET PROTECTION

- GRADING AND EROSION CONTROL NOTES:**
1. ALL EROSION CONTROL MEASURES SHALL BE CONSTRUCTED AND MAINTAINED BY THE CONTRACTOR IN ACCORDANCE WITH THE REQUIREMENTS TO OBTAIN A COPY OF THESE STANDARDS.
 2. METALLIC EROSION CONTROL MEASURES PRIOR TO ANY SITE WORK INCLUDING GRADING OR OTHER MEASURES MUST BE CONSTRUCTED PRIOR TO ANY GRADING. IF THE CONTRACTOR'S RESPONSIBILITY FOR PROTECTING EXISTING ADJACENT PROPERTIES OR OTHER TECHNICAL CONCERNS PREVENT SEGMENTATION FROM LEAVING THE SITE.
 3. EROSION CONTROL MEASURES INDICATED ON THE PLANS SHALL BE CONSTRUCTED IMMEDIATELY UPON COMMENCEMENT OF GRADING. EROSION CONTROL MEASURES ARE TO BE WORKING ORDER AT THE END OF EACH WORK DAY.
 4. SUPPORTING AND MAINTENANCE OF ALL EROSION CONTROL MEASURES SHALL BE THE RESPONSIBILITY OF THE CONTRACTOR. EROSION CONTROL MEASURES ARE TO BE MAINTAINED THROUGHOUT THE CONSTRUCTION PERIOD.
 5. DIRECT EROSION CONTROL MEASURES AFTER EACH 1/2" OR GREATER RAINFALL. REPAIR ANY DAMAGES OBSERVED DURING THE INSPECTION.
 6. NO SITE GRADING OUTSIDE OF THE LIMITS OF DISTURBANCE.
 7. EROSION CONTROL MEASURES SHALL BE REMOVED ONLY AFTER SITE CONSTRUCTION IS COMPLETE WITH ALL SOIL SURFACES HAVING AN ESTABLISHED VEGETATIVE COVER.
 8. CUT AND FILL SLOPES SHALL BE NO GREATER THAN 3:1 WITH THE EXCEPTION OF SLOPES EXCEEDING THE UPPER LIMIT OF 3:1 WHICH SHALL BE STABILIZED USING A TYPE A EROSION CONTROL MAT. FOLLOW LOCAL AND STATE EROSION CONTROL MATS.
 9. SLOPES EXCEEDING 4:1 SHALL BE STABILIZED WITH CLASS I TYPE B EROSION MATTING OR ALTERNATIVE SLOPES SHALL BE STABILIZED WITH CLASS II TYPE B EROSION MATTING.
 10. ALL INCIDENTAL SILT TRAPPING FROM CONSTRUCTION AND SOIL EROSION SHALL BE COLLECTED AND REMOVED BY THE END OF EACH WORKING DAY USING PROPER DISPOSAL METHODS.
 11. ANY RESTORED AREA EXPOSED TO BE SOAKED FOR GREATER THAN 3 DAYS SHALL BE STABILIZED WITH TEMPORARY SEEDING AND MULCH.
 12. ANY RESTORED AREA EXPOSED DURING THE CONSTRUCTION PERIOD SHALL BE STABILIZED WITH LOCAL AND STATE REGULATIONS.
 13. METALLIC EROSION CONTROLS ON THE DOWNSTREAM SIDE OF STORMSILLS.
 14. AT A MINIMUM ALL DISTURBED AREAS SHALL RECEIVE A MINIMUM OF 4" OF SEEDING. DISTURBED AREAS SHALL RECEIVE 100 LBS OF TYPE A POLYMER PER 100 SQ YD ON ALL DISTURBED AREAS. ANNUAL BYEGRASS OR ALFALFA OR A LEGUME SPECIES SHALL BE USED TO STABILIZE DISTURBED AREAS.
 15. EARTHWORK CONTRACTOR TO COVER EXCAVATIONS WITH ALL PROPOSED SLOPES TO ALLOW FOR THE FACEDNESS OF TOP OF BLACK BAYTOPSOIL.
 16. PROTECT AREAS TO ALLOW FOR THE FACEDNESS OF TOP OF BLACK BAYTOPSOIL.
 17. EXCESSIVE SLOPES TO BE REMOVED IF THE MAXIMUM DEPTH OF SOIL REMOVAL IS GREATER THAN 10" AND THE SOIL IS NOT SUITABLE FOR REUSE.

DNV EXPANSION
750 UNIVERSITY ROW
S11 PFE: 80.00'
S12 PFE: 80.00'
S13 PFE: 80.00'
S14 PFE: 80.00'
S15 PFE: 80.00'
S16 PFE: 80.00'
S17 PFE: 80.00'
S18 PFE: 80.00'
S19 PFE: 80.00'
S20 PFE: 80.00'

UNDESIGNED/UNPAVED
S11 PFE: 80.00'
S12 PFE: 80.00'
S13 PFE: 80.00'
S14 PFE: 80.00'
S15 PFE: 80.00'
S16 PFE: 80.00'
S17 PFE: 80.00'
S18 PFE: 80.00'
S19 PFE: 80.00'
S20 PFE: 80.00'



ISSUANCE AND REVISIONS

DATE	DESCRIPTION
REVISION	REVISED

KEY PLAN

SHEET INFORMATION

PROGRESS DOCUMENTS NOT FOR CONSTRUCTION

These documents are prepared and issued and may be subject to change without notice and shall not be used for construction purposes unless approved by the Engineer.

PROJECT MANAGER RB
PROJECT NUMBER 422291

EROSION CONTROL DETAILS

C405



339 East Chicago Street
Madison, WI 53702
(608) 278-2300
www.eua.com



GENERAL CONTRACTORS

PROJECT INFORMATION
750 UNIVERSITY ROW EXPANSION

750 University Row
Madison, WI 53705

ISSUANCE AND REVISIONS

DATE	DESCRIPTION
REVISION	REV. 1, 10/15/16

KEY PLAN

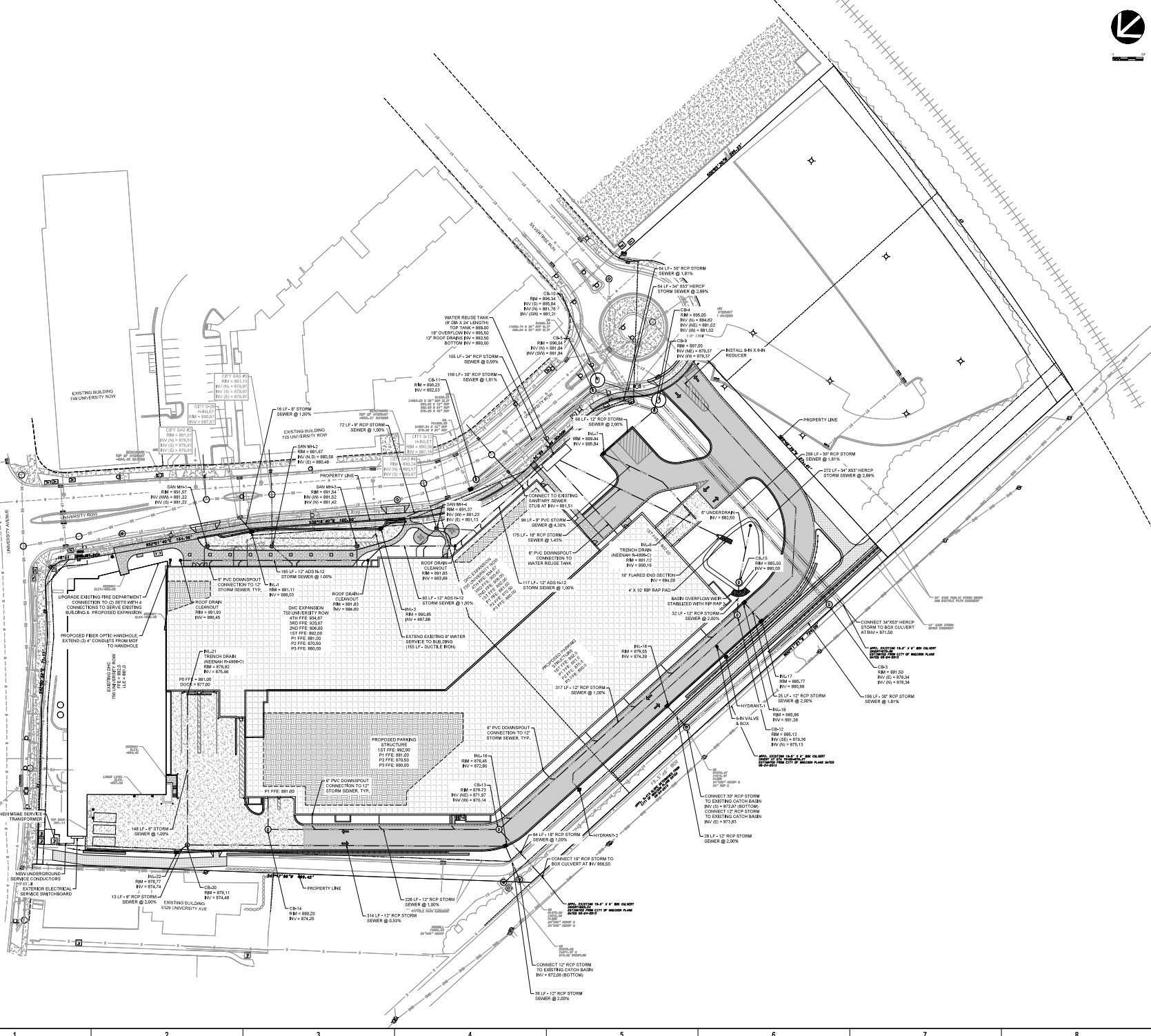
SHEET INFORMATION

PROGRESS DOCUMENTS NOT FOR CONSTRUCTION

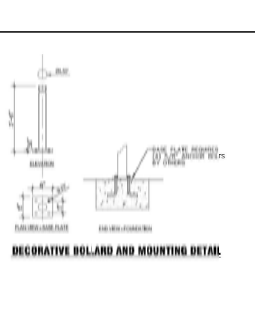
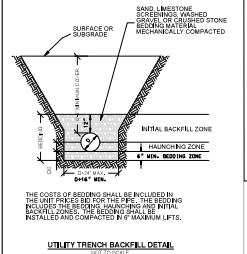
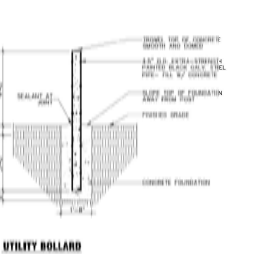
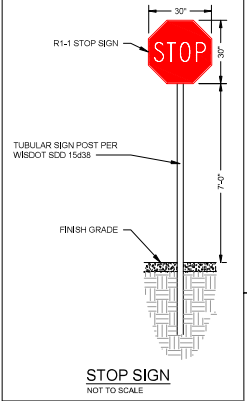
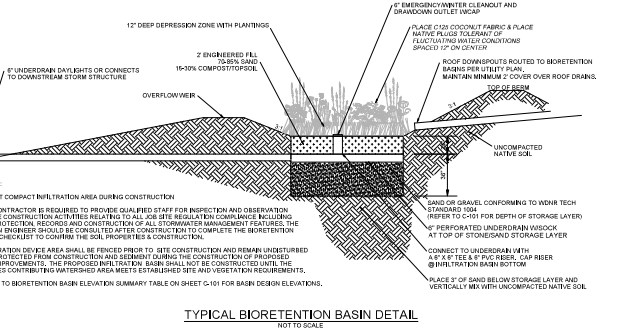
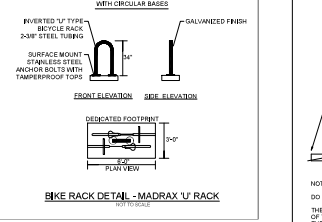
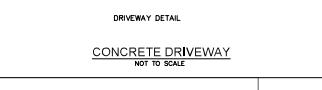
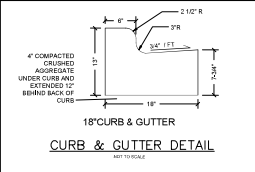
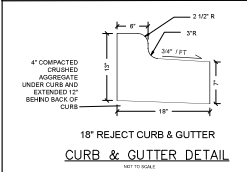
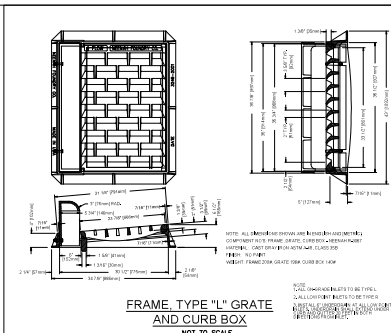
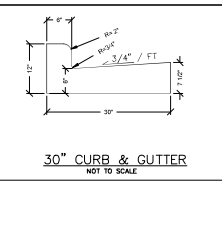
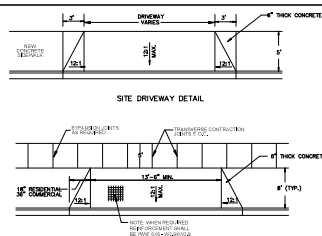
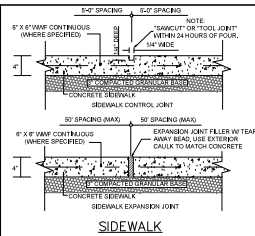
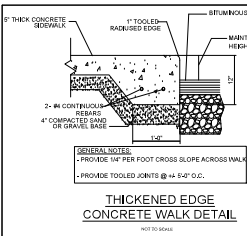
These documents are prepared and used only as a guide to design. All dimensions and quantities are for information only and are not to be used for construction. The contractor shall verify all dimensions and quantities on the field.

PROJECT MANAGER: RB
PROJECT NUMBER: 42291

SITE UTILITIES PLAN
C500



1 2 3 4 5 6 7 8



339 East Chicago Street
Madison, WI 53702
(608) 278-5300
www.eua.com



GENERAL CONTRACTORS

PROJECT INFORMATION
750 UNIVERSITY ROW EXPANSION

750 University Row
Madison, WI 53705

ISSUANCE AND REVISIONS

DATE	DESCRIPTION
RELEASED	ECL & M/D/E

KEY PLAN

SHEET INFORMATION

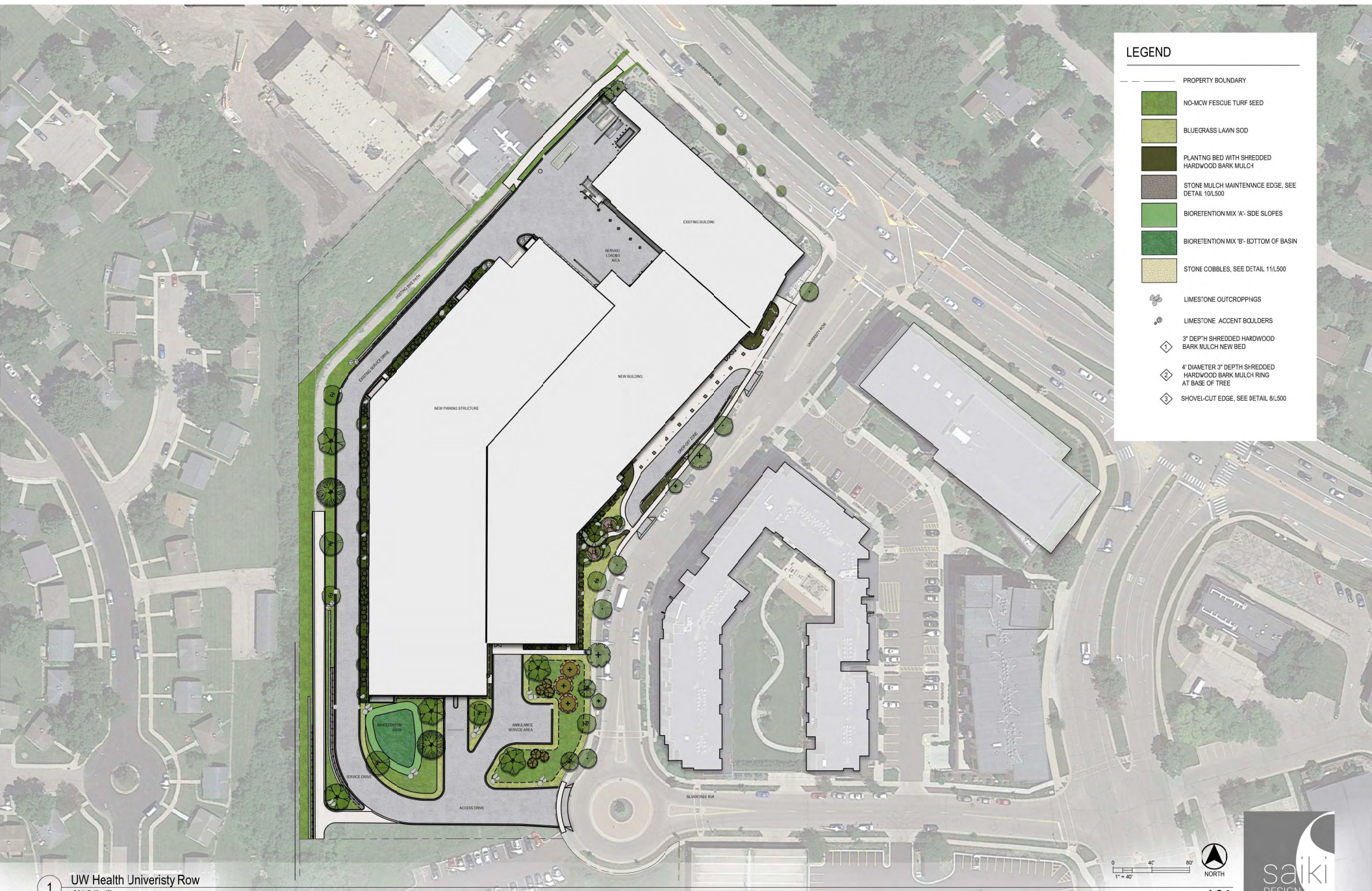
PROGRESS DOCUMENTS NOT FOR CONSTRUCTION
These documents are progress and plans and are to be used for design and planning purposes only. These are not final documents and do not represent the final design or construction documents.

PROJECT MANAGER: RB
PROJECT NUMBER: 422291

CONSTRUCTION DETAILS

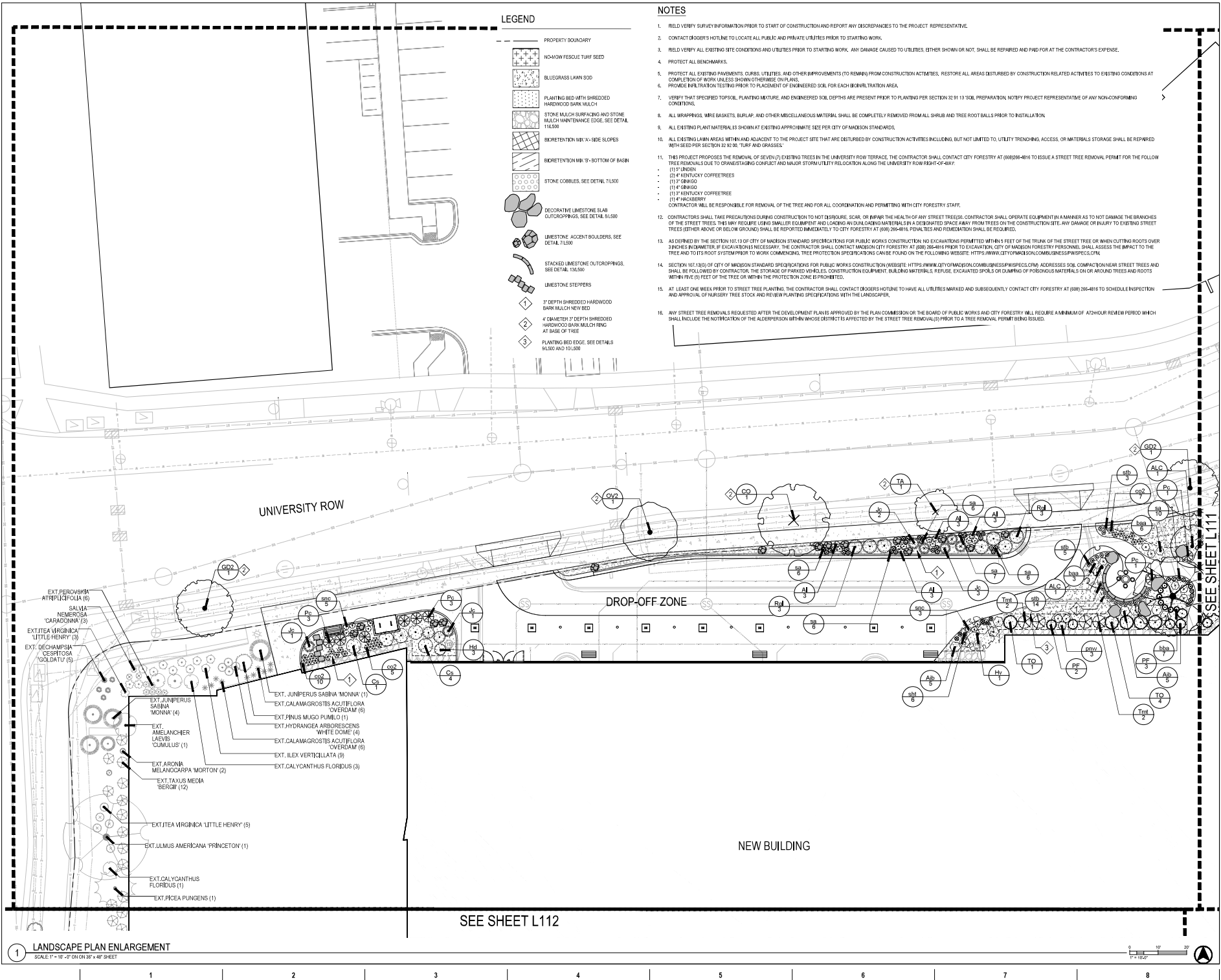
C600

© 2022 Krupp Construction, Inc.



LEGEND

-  PROPERTY BOUNDARY
-  NO-MOW FESCUE TURF SEED
-  BLUEGRASS LAWN SOD
-  PLANTING BED WITH SHREDDED HARDWOOD BARK MULCH
-  STONE MULCH MAINTENANCE EDGE, SEE DETAIL 10/L500
-  BIORETENTION MIX 'A'- SIDE SLOPES
-  BIORETENTION MIX 'B'- BOTTOM OF BASIN
-  STONE COBBLES, SEE DETAIL 11/L500
-  LIMESTONE OUTCROPPINGS
-  LIMESTONE ACCENT BOULDERS
-  3" DEPTH SHREDDED HARDWOOD BARK MULCH NEW BED
-  4" DIAMETER 3" DEPTH SHREDDED HARDWOOD BARK MULCH RING AT BASE OF TREE
-  SHOVEL-CUT EDGE, SEE DETAIL 8/L500



333 East Chicago Street
Madison, WI 53702
(608) 271-5200
www.eu-a.com

PROJECT CONTACT:
DIRECT PHONE: 608-266-4816
EMAIL ADDRESS: rob@eu-a.com

Rob Besardes
608-266-4816
rob@eu-a.com



PROJECT INFORMATION
750 UNIVERSITY ROW EXPANSION

750 University Row
Madison, WI 53705

ISSUANCE AND REVISIONS

DATE	DESCRIPTION
05/15/2023	ISSUE & LAND USE



SHEET INFORMATION

PROGRESS DOCUMENTS NOT FOR CONSTRUCTION

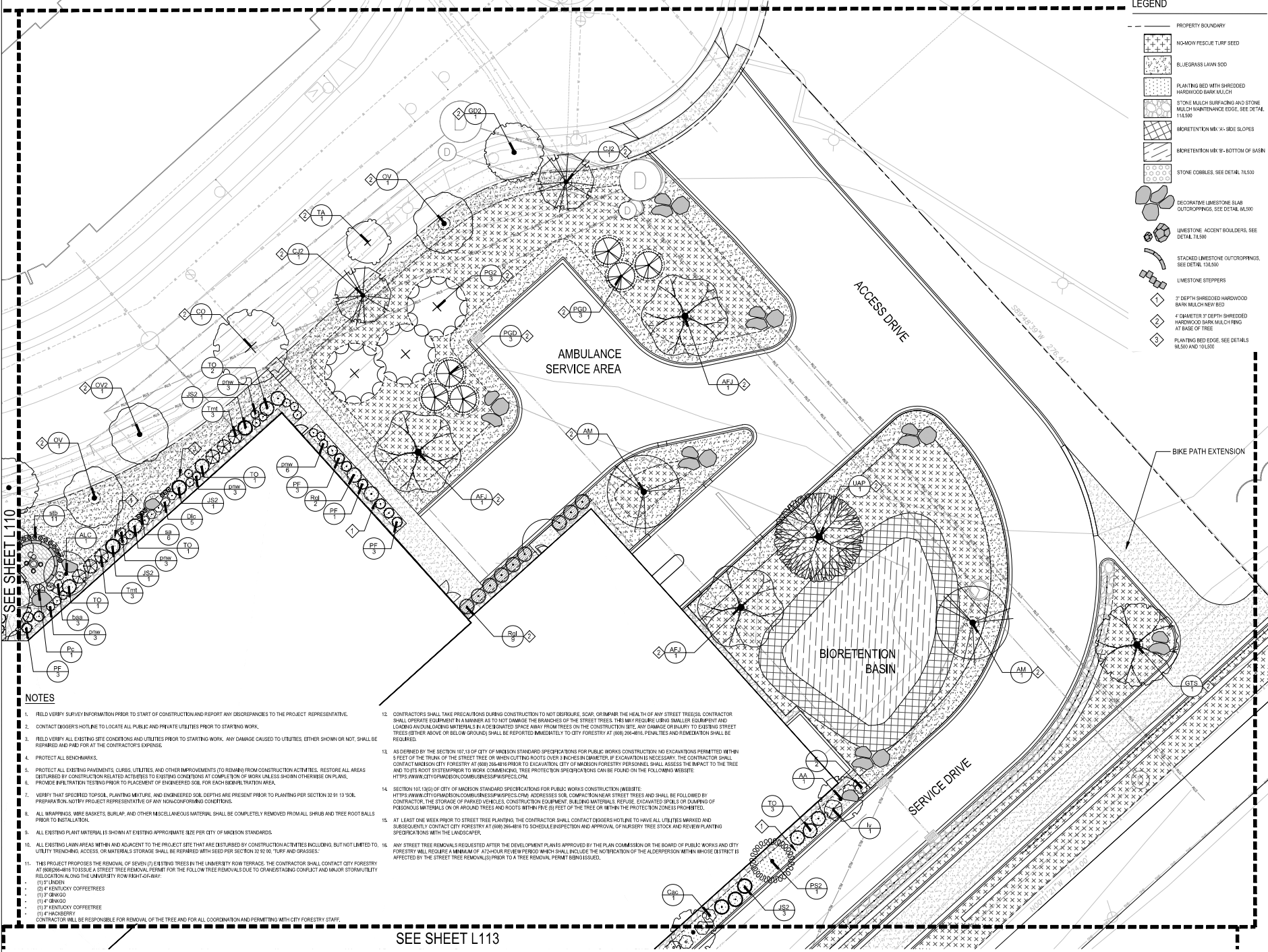
These documents are for informational purposes only and are not to be used for construction. They are not to be used for construction documents and shall not be used for building or construction.

PROJECT MANAGER: RB
PROJECT NUMBER: 422291

LANDSCAPE PLAN ENLARGEMENT
L110

LANDSCAPE PLAN ENLARGEMENT
SCALE: 1" = 10'-0" ON 36" x 48" SHEET





LEGEND

	PROPERTY BOUNDARY
	NO-MOW FESCUE TURF SEED
	BLUEGRASS LAWN SOD
	PLANTING BED WITH SHREDED HARDWOOD BARK MULCH
	STONE MULCH SURROUNDING AND STONE MULCH MAINTENANCE EDGE, SEE DETAIL 11A300
	BIORETENTION MIX 'A' - SIDE SLOPES
	BIORETENTION MIX 'B' - BOTTOM OF BASIN
	STONE COBBLES, SEE DETAIL 7A500
	DECORATIVE LIMESTONE SLAB OUTCROPPINGS, SEE DETAIL 8A500
	LIMESTONE ACCENT BOULDERS, SEE DETAIL 7A500
	STACKED LIMESTONE OUTCROPPINGS, SEE DETAIL 10A500
	LIMESTONE STEPPERS
	2' DEPTH SHREDED HARDWOOD BARK MULCH BED
	4' DIAMETER 3' DEPTH SHREDED HARDWOOD BARK MULCH BED AT BASE OF TREE
	PLANTING BED CODE, SEE DETAILS 8A500 AND 10A500

333 East Chicago Street
Madison, WI 53702
(608) 271-6200
www.eua.com

PROJECT CONTACT: Rob Beranek
DIRECT PHONE: 414-229-8145
EMAIL ADDRESS: rob@eua.com

LWHealth

KRUPP
GENERAL CONTRACTORS

Affiliated Engineers

PE

PROJECT INFORMATION

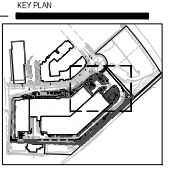
750 UNIVERSITY ROW EXPANSION

750 University Row
Madison, WI 53705

ISSUANCE AND REVISIONS

DATE	DESCRIPTION
05/15/2023	ISSUE FOR LAND USE

Alan Moller
5/15/2023



SHEET INFORMATION

PROGRESS DOCUMENTS NOT FOR CONSTRUCTION

These documents are for informational purposes only and are not to be used for construction. All construction shall be in accordance with the approved construction documents and all work shall be done in accordance with the applicable codes and standards.

PROJECT MANAGER: RB

PROJECT NUMBER: 422291

LANDSCAPE PLAN ENLARGEMENT

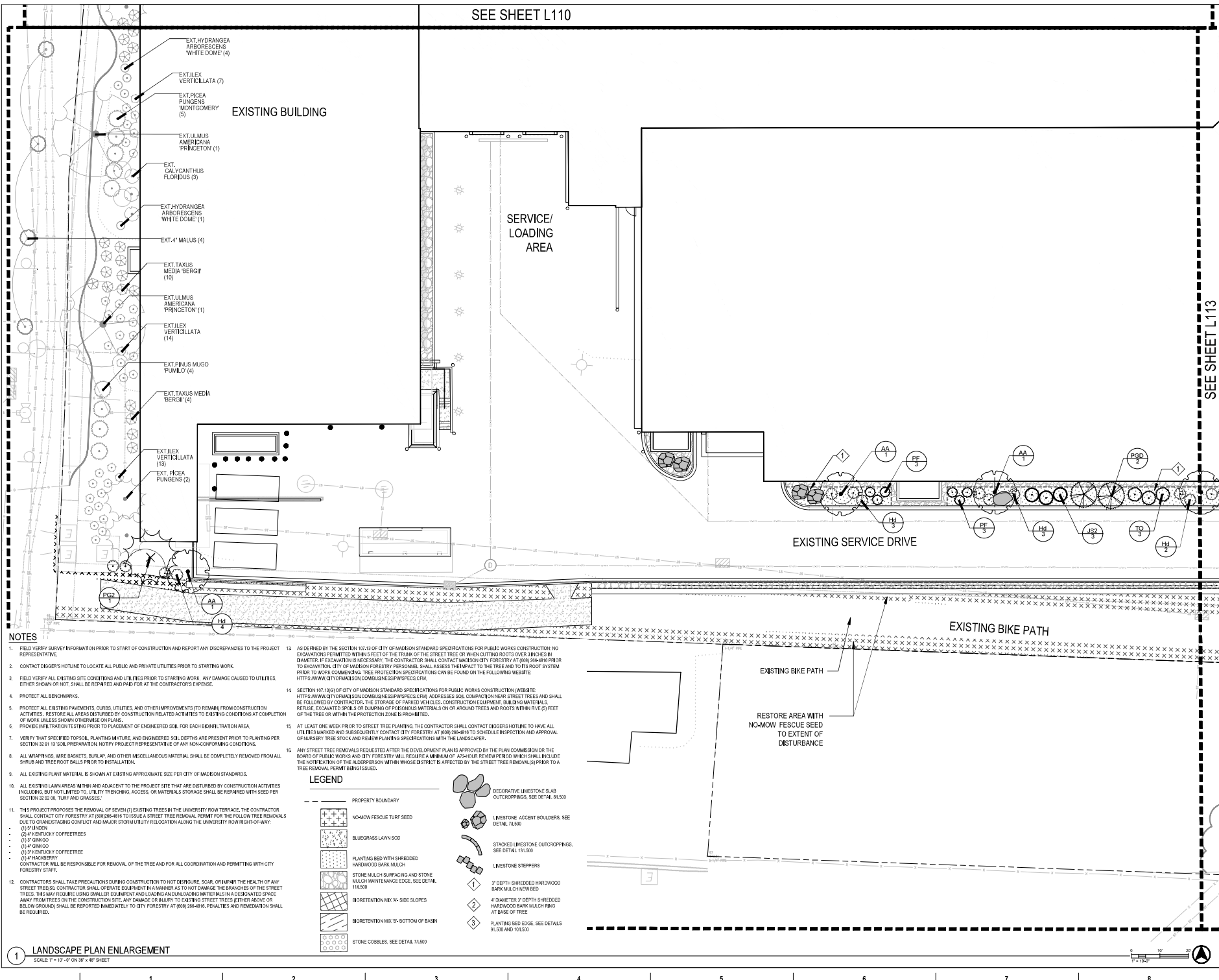
L111

NOTES

- FIELD VERIFY SURVEY INFORMATION PRIOR TO START OF CONSTRUCTION AND REPORT ANY DISCREPANCIES TO THE PROJECT REPRESENTATIVE.
- CONTACT OWNER'S HOTLINE TO LOCATE ALL PUBLIC AND PRIVATE UTILITIES PRIOR TO STARTING WORK.
- FIELD VERIFY ALL EXISTING SITE CONDITIONS AND UTILITIES PRIOR TO STARTING WORK. ANY DAMAGE CAUSED TO UTILITIES, EITHER SHOWN OR NOT, SHALL BE REPAIRED AND PAID FOR AT THE CONTRACTOR'S EXPENSE.
- PROTECT ALL BENCHMARKS.
- PROTECT ALL EXISTING PAVEMENTS, CURBS, UTILITIES, AND OTHER IMPROVEMENTS TO REMAIN FROM CONSTRUCTION ACTIVITIES. RESTORE ALL AREAS DISTURBED BY CONSTRUCTION RELATED ACTIVITIES TO EXISTING CONDITIONS AT COMPLETION OF WORK UNLESS SHOWN OTHERWISE ON PLANS.
- PROVIDE INFILTRATION TESTING PRIOR TO PLACEMENT OF ENGINEERED SOIL FOR EACH BIORETENTION AREA.
- VERIFY THAT SPECIFIED TOPSOIL, PLANTING MIXTURE, AND ENGINEERED SOIL DEPTHS ARE PRESENT PRIOR TO PLANTING PER SECTION 22 91 13 SOIL PREPARATION NOTIFY PROJECT REPRESENTATIVE OF ANY NONCONFORMING CONDITIONS.
- ALL WRAPPINGS, WIRE BASKETS, BURLAP, AND OTHER MISCELLANEOUS MATERIAL SHALL BE COMPLETELY REMOVED FROM ALL SHRUB AND TREE ROOT BALLS PRIOR TO INSTALLATION.
- ALL EXISTING PLANT MATERIAL IS SHOWN AT EXISTING APPROXIMATE SIZE PER CITY OF MADISON STANDARDS.
- ALL EXISTING LAWN AREAS WITHIN AND ADJACENT TO THE PROJECT SITE THAT ARE DISTURBED BY CONSTRUCTION ACTIVITIES INCLUDING, BUT NOT LIMITED TO, UTILITY TRENCHING, ACCESS, OR MATERIALS STORAGE SHALL BE REPAIRED WITH SEED PER SECTION 32 92 00, TURF AND GRASSES.
- THIS PROJECT PROPOSES THE REMOVAL OF SEVEN (7) EXISTING TREES IN THE UNIVERSITY ROW TERRACE. THE CONTRACTOR SHALL CONTACT CITY FORESTRY AT 608-266-4818 TO ISSUE A STREET TREE REMOVAL PERMIT FOR THE FOLLOWING TREE REMOVALS DUE TO DRAGSTAGING CONFLICT AND MAJOR STORMWATER REDUCTION ALONG THE UNIVERSITY ROW PERMIT CORRIDOR:
 - (1) 2" UNDER
 - (2) 4" KENTUCKY COFFEE TREE
 - (1) 2" FRINGED
 - (2) 4" FRINGED
 - (1) 2" KENTUCKY COFFEE TREE
 - (1) 4" HAWDBERRY
 CONTRACTOR WILL BE RESPONSIBLE FOR REMOVAL OF THE TREE AND FOR ALL COORDINATION AND PERMITTING WITH CITY FORESTRY STAFF.
- CONTRACTORS SHALL TAKE PRECAUTIONS DURING CONSTRUCTION TO NOT DESPIGURE, SCAR, OR IMPAIR THE HEALTH OF ANY STREET TREES. CONTRACTOR SHALL OPERATE EQUIPMENT IN A MANNER AS TO NOT DAMAGE THE BRANCHES OF THE STREET TREES. THEY MAY REQUIRE USING SMALLER EQUIPMENT AND LOADING AND UNLOADING MATERIAL IN A DESIGNATED SPACE AWAY FROM TREES ON THE CONSTRUCTION SITE. ANY DAMAGE OR INJURY TO EXISTING STREET TREES (EITHER ABOVE OR BELOW GROUND) SHALL BE REPORTED IMMEDIATELY TO CITY FORESTRY AT (608) 266-4818. PENALTIES AND REMEDIATION SHALL BE REQUIRED.
- AS DERIVED BY THE SECTION 107.13 OF CITY OF MADISON STANDARD SPECIFICATIONS FOR PUBLIC WORKS CONSTRUCTION NO EXCAVATIONS PERMITTED WITHIN 5 FEET OF THE TRUNK OF THE STREET TREE OR WITHIN 10 FEET OF THE ROOTS. IF EXCAVATION IS NECESSARY, THE CONTRACTOR SHALL CONTACT MADISON CITY FORESTRY AT (608) 266-4818 PRIOR TO EXCAVATION. CITY OF MADISON FORESTRY PERSONNEL SHALL ASSESS THE IMPACT TO THE TREE AND TO THE ROOT SYSTEM PRIOR TO WORK COMMENCING. TREE PROTECTION SPECIFICATIONS CAN BE FOUND ON THE FOLLOWING WEBSITE: [HTTPS://WWW.CITYOFMADISON.COM/BUSINESS/SPECS/CRM](https://www.cityofmadison.com/business/specs/crm)
- SECTION 107.13(G) OF CITY OF MADISON STANDARD SPECIFICATIONS FOR PUBLIC WORKS CONSTRUCTION (WEBSITE: [HTTPS://WWW.CITYOFMADISON.COM/BUSINESS/SPECS/CRM](https://www.cityofmadison.com/business/specs/crm)) ADDRESSES SOIL COMPACTION NEAR STREET TREES AND SHALL BE FOLLOWED BY CONTRACTOR. THE STORAGE OF PARKING VEHICLES, CONSTRUCTION EQUIPMENT, BUILDING MATERIALS, REFUSE, EXCAVATED SPILLS, OR DUMPING OF POISONOUS MATERIALS ON OR AROUND TREES AND ROOTS WITHIN FIVE (5) FEET OF THE TREE OR WITHIN THE PROTECTION ZONES IS PROHIBITED.
- AT LEAST ONE WEEK PRIOR TO STREET TREE PLANTING, THE CONTRACTOR SHALL CONTACT OWNER'S HOTLINE TO HAVE ALL UTILITIES MARKED AND SUBSEQUENTLY CONTACT CITY FORESTRY AT (608) 266-4818 TO SCHEDULE INSPECTION AND APPROVAL OF NURSERY TREE STOCK AND REVIEW PLANTING SPECIFICATIONS WITH THE AGENCIES.
- ANY STREET TREE REMOVALS REQUESTED AFTER THE DEVELOPMENT PLANS ARE APPROVED BY THE PLAN COMMISSION OR THE BOARD OF PUBLIC WORKS AND CITY FORESTRY WILL REQUIRE A MINIMUM OF 472-HOUR REVIEW PERIOD WHICH SHALL INCLUDE THE NOTIFICATION OF THE ALDERPERSON WITHIN WHOSE DISTRICT IS AFFECTED BY THE STREET TREE REMOVAL(S) PRIOR TO A TREE REMOVAL PERMIT BEING ISSUED.

LANDSCAPE PLAN ENLARGEMENT
SCALE 1" = 10'-0" ON 36" X 48" SHEET





NOTES

- FIELD VERIFY SURVEY INFORMATION PRIOR TO START OF CONSTRUCTION AND REPORT ANY DISCREPANCIES TO THE PROJECT REPRESENTATIVE.
- CONTACT GDDP'S HOTLINE TO LOCATE ALL PUBLIC AND PRIVATE UTILITIES PRIOR TO STARTING WORK.
- FIELD VERIFY ALL EXISTING SITE CONDITIONS AND UTILITIES PRIOR TO STARTING WORK. ANY DAMAGE CAUSED TO UTILITIES OTHER THAN OR NOT SHALL BE REPAIRED AND PAID FOR AT THE CONTRACTOR'S EXPENSE.
- PROTECT ALL BENCHMARKS.
- PROTECT ALL EXISTING PAVEMENTS, CURBS, UTILITIES, AND OTHER IMPROVEMENTS (TO REMAIN) FROM CONSTRUCTION ACTIVITIES. RESTORE ALL AREAS DISTURBED BY CONSTRUCTION RELATED ACTIVITIES TO MATCHING CONDITIONS AT COMPLETION OF WORK UNLESS SHOWN OTHERWISE ON PLANS.
- PROVIDE PERMANENT TOE PROTECTION OF ENGINEERED SOIL FOR EACH BENCH/RETENTION AREA.
- VERIFY THAT SPECIFIED TOPSOIL PLANTING MIXTURE AND ENGINEERED SOIL CAPINGS ARE PRESENT PRIOR TO PLANTING PER SECTION 91.13 SOIL PREPARATION. NOTIFY PROJECT REPRESENTATIVE OF ANY NON-COMPLYING CONDITIONS.
- ALL WRAPPINGS, WIRE BASKETS, BURLAP, AND OTHER MISCELLANEOUS MATERIAL SHALL BE COMPLETELY REMOVED FROM ALL SHRUB AND TREE ROOT BALLS PRIOR TO INSTALLATION.
- ALL EXISTING PLANT MATERIAL IS SHOWN AT EXISTING APPROXIMATE SIZE PER CITY OF MADISON STANDARDS.
- ALL EXISTING LAWN AREAS WITHIN AND ADJACENT TO THE PROJECT SITE THAT ARE DISTURBED BY CONSTRUCTION ACTIVITIES INCLUDING, BUT NOT LIMITED TO, UTILITY TRENCHING, ACCESS, OR MATERIALS STORAGE SHALL BE REPAIRED WITH SEED PER SECTION 91.13 SOIL TURF AND GRASSES.
- THIS PROJECT PROPOSES THE REMOVAL OF SEVEN (7) EXISTING TREES IN THE UNIVERSITY ROW TERRACE. THE CONTRACTOR SHALL CONTACT CITY FORESTRY AT (608)264-4816 TO ISSUE A STREET TREE REMOVAL PERMIT FOR THE FOLLOWING TREE REMOVALS DUE TO CRANE STAGING CONFLICT AND MAJOR STORM UTILITY RELOCATION ALONG THE UNIVERSITY ROW HIGHWAY-WAY:
 - (1) 12" DBH
 - (2) 4" KENTUCKY COFFEE TREE
 - (3) 12" DBH
 - (4) 4" DBH
 - (5) 3" KENTUCKY COFFEE TREE
 - (6) 12" HACHSBERY
 CONTRACTOR WILL BE RESPONSIBLE FOR REMOVAL OF THE TREE AND FOR ALL COORDINATION AND PERMITTING WITH CITY FORESTRY STAFF.
- CONTRACTORS SHALL TAKE PRECAUTIONS DURING CONSTRUCTION TO NOT DISTURB, SCAR, OR IMPAIR THE HEALTH OF ANY STREET TREES. CONTRACTOR SHALL OPERATE EQUIPMENT IN A MANNER AS TO NOT DAMAGE THE BRANCHES OF THE STREET TREES. THIS MAY REQUIRE USING SMALLER EQUIPMENT AND LOADING AND UNLOADING MATERIALS IN A DESIGNATED SPACE AWAY FROM TREES ON THE CONSTRUCTION SITE. ANY DAMAGE OR INJURY TO EXISTING STREET TREES (EITHER ABOVE OR BELOW GROUND) SHALL BE REPORTED IMMEDIATELY TO CITY FORESTRY AT (608) 264-4816. PENALTIES AND REMEDIATION SHALL BE REQUIRED.
- AS DERIVED BY THE SECTION 107.13 OF CITY OF MADISON STANDARD SPECIFICATIONS FOR PUBLIC WORKS CONSTRUCTION. NO EXCAVATIONS PERMITTED WITHIN 5 FEET OF THE TRUNK OF THE STREET TREE OR WHEN CUTTING ROOTS OVER BENCHES BY DIAMETER. IF EXCAVATION IS NECESSARY, THE CONTRACTOR SHALL CONTACT MADISON CITY FORESTRY AT (608) 264-4816 PRIOR TO EXCAVATION. CITY OF MADISON FORESTRY PERSONNEL SHALL ASSESS THE IMPACT TO THE TREE AND TO ITS ROOT SYSTEM PRIOR TO WORK COMMENCING. TREE PROTECTION SPECIFICATIONS CAN BE FOUND ON THE FOLLOWING WEBSITE: [HTTPS://WWW.CITYOFMADISON.COM/LANDSCAPE/PWSPFCG.CFM](https://www.cityofmadison.com/landscape/pwspfcg.cfm)
- SECTION 107.13(3) OF CITY OF MADISON STANDARD SPECIFICATIONS FOR PUBLIC WORKS CONSTRUCTION (WEBSITE: [HTTPS://WWW.CITYOFMADISON.COM/LANDSCAPE/PWSPFCG.CFM](https://www.cityofmadison.com/landscape/pwspfcg.cfm)) ADDRESSING SOIL COMPACTION NEAR STREET TREES AND SHALL BE FOLLOWED BY CONTRACTOR. THE STORAGE OF PARKED VEHICLES, CONSTRUCTION EQUIPMENT, BUILDING MATERIALS, REFUSE, EXCAVATED SPILLS OR DUMPING OF PEOBIOUS MATERIALS ON OR AROUND TREES AND ROOTS WITHIN FIVE (5) FEET OF THE TREE OR WITHIN THE PROTECTION ZONE IS PROHIBITED.
- AT LEAST ONE WEEK PRIOR TO STREET TREE PLANTING, THE CONTRACTOR SHALL CONTACT GDDPERS HOTLINE TO HAVE ALL UTILITIES MARKED AND SUBSEQUENTLY CONTACT CITY FORESTRY AT (608) 264-4816 TO SCHEDULE INSPECTION AND APPROVAL OF NURSERY TREE STOCK AND REVEAL PLANTING SPECIFICATIONS WITH THE LANDSCAPER.
- ANY STREET TREE REMOVALS REQUESTED AFTER THE DEVELOPMENT PLANS APPROVED BY THE PLAN COMMISSION OR THE BOARD OF PUBLIC WORKS AND CITY FORESTRY WILL REQUIRE A MINIMUM OF 45-DAY REVIEW PERIOD WHICH SHALL INCLUDE THE NOTIFICATION OF THE ALDERPERSON WITHIN WHOSE DISTRICT IS AFFECTED BY THE STREET TREE REMOVALS (PRIOR TO A TREE REMOVAL PERMIT BEING ISSUED).

LEGEND

- PROPERTY BOUNDARY
- NO-MOW FESCUE TURF SEED
- BLUEGRASS LAWN SOO
- PLANTING BED WITH SHREDED HARDWOOD BARK MULCH
- STONE MULCH SURFACING AND STONE MULCH MAINTENANCE EDGE. SEE DETAIL 114.500
- BIORETENTION 10" X 4" - SEE SLOPES
- BIORETENTION 10" X 3" - BOTTOM OF BASIN
- STONE COBBLES. SEE DETAIL 114.500
- DECORATIVE LIMESTONE SLAB OUTCROPPINGS. SEE DETAIL 114.500
- LIMESTONE ACCENT BOULDERS. SEE DETAIL 114.500
- STACKED LIMESTONE OUTCROPPINGS. SEE DETAIL 113.1500
- LIMESTONE STEPPERS
- 3" DEPTH SHREDED HARDWOOD BARK MULCH NEW BED
- 4" DIAMETER 2" DEPTH SHREDED HARDWOOD BARK MULCH RING AT BASE OF TREE
- PLANTING BED EDGE. SEE DETAILS 114.500 AND 104.500

LANDSCAPE PLAN ENLARGEMENT
SCALE: 1" = 10'-0" ON 36" x 48" SHEET

SEE SHEET L110

SEE SHEET L113

eua
 333 East Chicago Street
 Madison, WI 53702
 (608) 271-6200
 www.eua.com
 PROJECT CONTACT: Rob Bertram
 DIRECT PHONE: 414-229-4145
 EMAIL ADDRESS: rob@eua.com

UWHealth
KRUPP
 GENERAL CONTRACTORS
AEL Affiliated Engineers
PE **seki**

PROJECT INFORMATION
750 UNIVERSITY ROW EXPANSION

750 University Row
 Madison, WI 53705

ISSUANCE AND REVISIONS

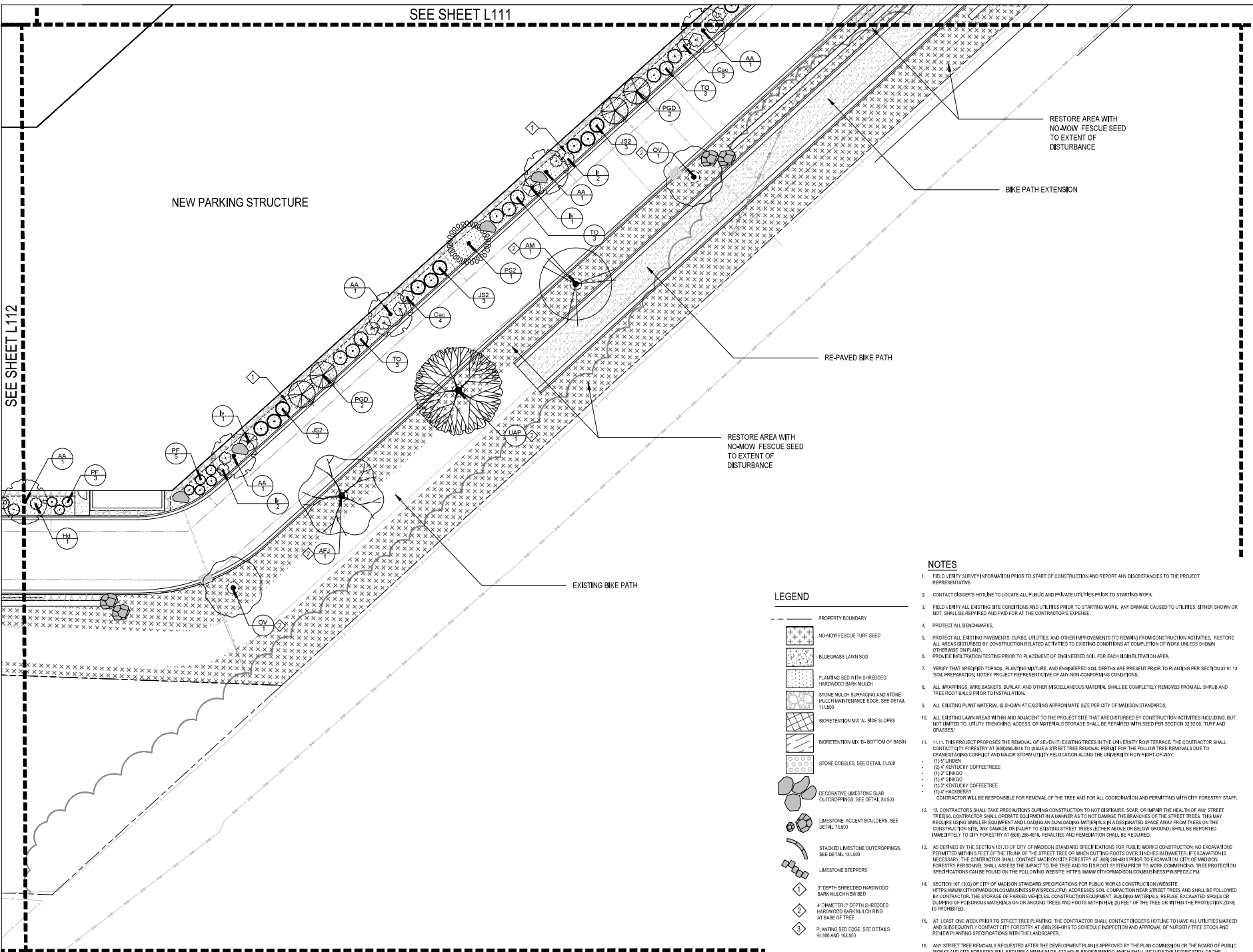
DATE	DESCRIPTION
05/15/2023	LDG & LAND USE



SHEET INFORMATION
PROGRESS DOCUMENTS NOT FOR CONSTRUCTION
 These documents are for review and discussion only. They are not to be used for construction. All construction documents are subject to the final construction documents. Best of luck!

PROJECT MANAGER: RB
 PROJECT NUMBER: 422291
LANDSCAPE PLAN ENLARGEMENT

L112



SEE SHEET L111

SEE SHEET L112

NEW PARKING STRUCTURE

RESTORE AREA WITH NO-MOW FESCUE SEED TO EXTENT OF DISTURBANCE

BIKE PATH EXTENSION

RE-PAVED BIKE PATH

RESTORE AREA WITH NO-MOW FESCUE SEED TO EXTENT OF DISTURBANCE

EXISTING BIKE PATH

NOTES

1. FIELD VERIFY SURVEY INFORMATION PRIOR TO START OF CONSTRUCTION AND REPORT ANY DISCREPANCIES TO THE PROJECT REPRESENTATIVE.
2. CONTACT DODGERS HOTLINE TO LOCATE ALL PUBLIC AND PRIVATE UTILITIES PRIOR TO STARTING WORK.
3. FIELD VERIFY ALL EXISTING SITE CONDITIONS AND UTILITIES PRIOR TO STARTING WORK. ANY DAMAGE CAUSED TO UTILITIES (OTHER SHOWN OR NOT) SHALL BE REPAIRED AND PAID FOR AT THE CONTRACTOR'S EXPENSE.
4. PROTECT ALL BENCHMARKS.
5. PROTECT ALL EXISTING PAVEMENTS, CURBS, UTILITIES, AND OTHER IMPROVEMENTS (TO REMAIN) FROM CONSTRUCTION ACTIVITIES. RESTORE ALL AREAS DISTURBED BY CONSTRUCTION RELATED ACTIVITIES TO EXISTING CONDITIONS AT COMPLETION OF WORK UNLESS SHOWN OTHERWISE OTHERWISE SHOWN.
6. PROVIDE INFILTRATION TESTING PRIOR TO PLACEMENT OF ENGINEERED SOIL FOR EACH BIGNILTRATION AREA.
7. VERIFY THAT SPECIFIED TOPSOIL, PLANTING MIXTURE, AND ENGINEERED SOIL DEPTHS ARE PRESENT PRIOR TO PLANTING PER SECTION 32 B1 13 'SOIL PREPARATION, NOTIFY PROJECT REPRESENTATIVE OF ANY NON-COMFORMING CONDITIONS.
8. ALL WRAPPINGS, WIRE BASKETS, BURLAP, AND OTHER MISCELLANEOUS MATERIAL SHALL BE COMPLETELY REMOVED FROM ALL SHRUBS AND TREE ROOT BALLS PRIOR TO INSTALLATION.
9. ALL EXISTING PLANT MATERIAL IS SHOWN AT EXISTING APPROXIMATE SITE PER CITY OF MADISON STANDARDS.
10. ALL EXISTING LAWN AREAS WITHIN AND ADJACENT TO THE PROJECT SITE THAT ARE DISTURBED BY CONSTRUCTION ACTIVITIES INCLUDING BUT NOT LIMITED TO, UTILITY TRENCHING, ACCESS, OR MATERIALS STORAGE SHALL BE REPAIRED WITH SEED PER SECTION 32 B1 00, TURF AND GRASSES.
11. 11.1. THIS PROJECT PROPOSES THE REMOVAL OF SEVEN (7) EXISTING TREES IN THE UNIVERSITY ROW TERRACE. THE CONTRACTOR SHALL CONTACT CITY FORESTRY AT (608)268-4816 TO OBTAIN A STREET TREE REMOVAL PERMIT FOR THE FOLLOWING TREE REMOVALS DUE TO CRANE/TOWER COLLISION AND MAJOR STABILITY REDUCTION ALONG THE UNIVERSITY ROW RIGHT-OF-WAY:
 - (1) 5' LINDEN
 - (2) 4" DODD CANY COFFEE TREE
 - (1) 3" QUINQUE
 - (1) 2" QUINQUE
 - (1) 2" DODD CANY COFFEE TREE
 - (1) 4" HACKBERRY
12. CONTRACTORS SHALL TAKE PRECAUTIONS DURING CONSTRUCTION TO NOT DAMAGE, SCAR, OR IMPAIR THE HEALTH OF ANY STREET TREES. CONTRACTOR SHALL OPERATE EQUIPMENT IN A MANNER AS TO NOT DAMAGE THE BRANCHES OF THE STREET TREES. THIS MAY REQUIRE USING SMALLER EQUIPMENT AND LOADING AND UNLOADING MATERIALS IN A DESIGNATED SPACE AWAY FROM TREES ON THE CONSTRUCTION SITE. ANY DAMAGE TO EXISTING STREET TREES (EITHER ABOVE OR BELOW GROUND) SHALL BE REPORTED IMMEDIATELY TO CITY FORESTRY AT (608) 268-4816. PENALTIES AND REMEDIATION SHALL BE REQUIRED.
13. AS DEFINED BY THE SECTION 107.13 OF CITY OF MADISON STANDARD SPECIFICATIONS FOR PUBLIC WORKS CONSTRUCTION AND EXCAVATIONS PERMITTED WITHIN 5 FEET OF THE TRUNK OF THE STREET TREE OR WHEN CUTTING ROOTS OVER INCHES IN DIAMETER. IF SIGNATURE IS NECESSARY, THE CONTRACTOR SHALL CONTACT MADISON CITY FORESTRY AT (608) 268-4816 PRIOR TO EXCAVATION. CITY OF MADISON FORESTRY PERSONNEL SHALL ASSESS THE IMPACT TO THE TREE AND TO ITS ROOT SYSTEM PRIOR TO WORK COMMENCING. TREE PROTECTION SPECIFICATIONS CAN BE FOUND ON THE FOLLOWING WEBSITE: <https://www.ci.madison.wi.us/standard-specifications>
14. SECTION 107.13(D) OF CITY OF MADISON STANDARD SPECIFICATIONS FOR PUBLIC WORKS CONSTRUCTION (WEBSITE: <https://www.ci.madison.wi.us/standard-specifications>) ADDRESSES SOIL COMPACTION NEAR STREET TREES AND SHALL BE FOLLOWED BY CONTRACTOR. THE STORAGE OF PARKING WHEELS, CONSTRUCTION EQUIPMENT, BUILDING MATERIALS, REFUSE, EXCAVATED SHOALS OR DUMPING OF PESTICIDES MATERIALS ON OR AROUND TREES AND ROOTS WITHIN 5 FEET OF THE TREE OR WITHIN THE PROTECTION ZONE IS PROHIBITED.
15. AT LEAST ONE WEEK PRIOR TO STREET TREE PLANTING, THE CONTRACTOR SHALL CONTACT DODGERS HOTLINE TO HAVE ALL UTILITIES MARKED AND SUBSEQUENTLY CONTACT CITY FORESTRY AT (608) 268-4816 TO SCHEDULE INSPECTION AND APPROVAL OF NURSERY TREE STOCK AND REVIEW PLANTING SPECIFICATIONS WITH THE LANDSCAPER.
16. ANY STREET TREE REMOVALS REQUESTED AFTER THE DEVELOPMENT PLANS APPROVED BY THE PLAN COMMISSION OR THE BOARD OF PUBLIC WORKS AND CITY FORESTRY WILL REQUIRE A MINIMUM OF 47-HOUR REVIEW PERIOD WHICH SHALL INCLUDE THE NOTIFICATION OF THE ADJACENT PROPERTY OWNER (WHICH IS NOT APPLICABLE TO THE STREET TREE REMOVALS) PRIOR TO A TREE REMOVAL PERMIT BEING ISSUED.

LEGEND

- PROPERTY BOUNDARY
- NO-MOW FESCUE TURF SEED
- BLUEGRASS LAWN SOG
- PLANTING BED WITH SHREDDED HARDWOOD BARK MULCH
- STONE MULCH SURFACING AND STONE MULCH MAINTENANCE EDGE. SEE DETAIL 7L500
- BIORETENTION MIX 'A'- SIDE SLOPES
- BIORETENTION MIX 'B'- BOTTOM OF BASIN
- STONE COBBLES. SEE DETAIL 7L500
- DECORATIVE LIMESTONE SLAB OUTCROPPINGS. SEE DETAIL 8L500
- LIMESTONE ACCENT BOULDERS. SEE DETAIL 7L500
- STACKED LIMESTONE OUTCROPPINGS. SEE DETAIL 13L500
- LIMESTONE STEPPERS
- 3" DEPTH SHREDDED HARDWOOD BARK MULCH ON BED
- 4" DIAMETER 2" DEPTH SHREDDED HARDWOOD BARK MULCH RING AT BASE OF TREE
- PLANTING BED EDGE. SEE DETAILS 9L200 AND 9L300

eua
 333 East Chicago Street
 Madison, WI 53702
 (608) 278-6200
 www.eua.com

PROJECT CONTACT: Rob Beranovich
 DIRECT PHONE: 608-261-4145
 EMAIL ADDRESS: rob@eua.com

UWHealth
KRUPP
 GENERAL CONTRACTORS

AEL Affiliated Engineers
PE **SEKI**

PROJECT INFORMATION
750 UNIVERSITY ROW EXPANSION

750 University Row
 Madison, WI 53705

ISSUANCE AND REVISIONS

DATE	DESCRIPTION
05/15/2023	LOGIC & LAND USE

CONTACT

Abbie Muller
 LA-473
 Wisconsin
 LANDSCAPE ARCHITECT

Abbie Muller
 5/15/2023

KEY PLAN

SHEET INFORMATION

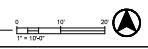
PROGRESS DOCUMENTS NOT FOR CONSTRUCTION

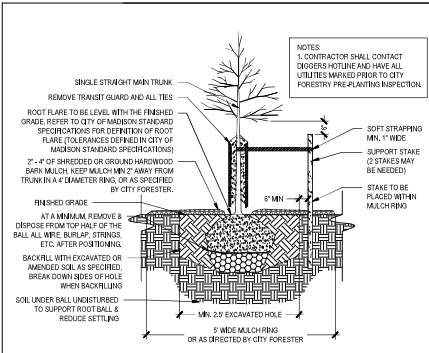
These documents are for review and information only. They are not to be used for construction. They are not to be used for construction. They are not to be used for construction.

PROJECT NUMBER: RB
 PLAN NUMBER: 422291

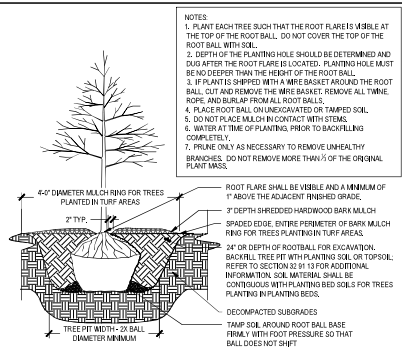
LANDSCAPE PLAN ENLARGEMENT
L113

1 LANDSCAPE PLAN ENLARGEMENT
 SCALE: 1" = 10' - 0" ON 30" x 48" SHEET

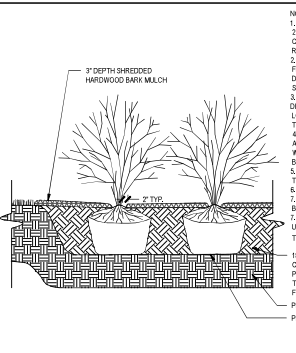




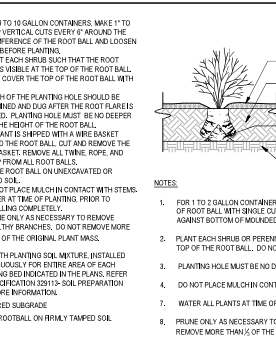
1 BALLED BURLAP TREE PLANTING, CITY TERRACE
SCALE: 1/8\"/>



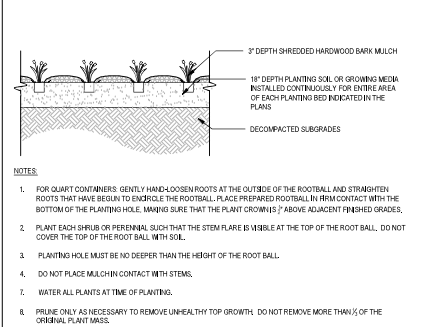
2 TYPICAL BALL AND BURLAP TREE PLANTING, GENERAL
SCALE: 1/8\"/>



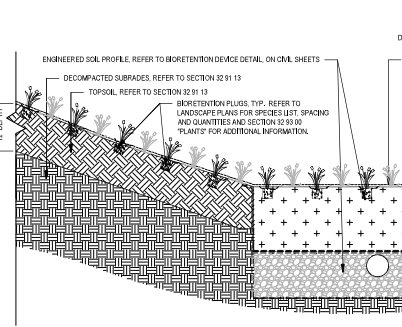
3 TYPICAL LARGE CONTAINER PLANTING
SCALE: 1/8\"/>



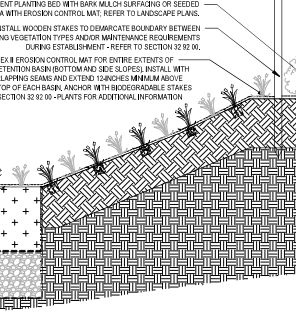
4 TYPICAL MEDIUM CONTAINER PLANTING
SCALE: 1/8\"/>



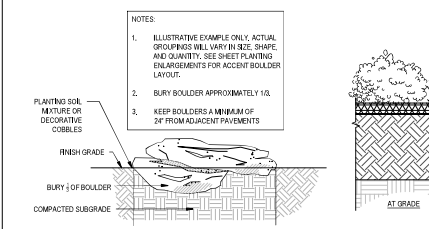
5 TYPICAL PERENNIAL PLANTING
SCALE: 1/8\"/>



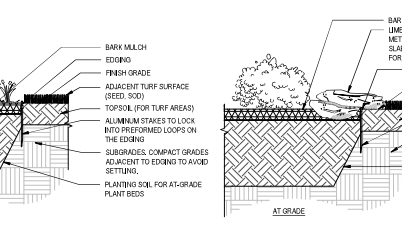
6 BIORETENTION PLANTING
SCALE: 1/8\"/>



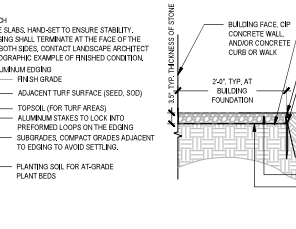
7 HAND-SET COBBLE WITH ACCENT BOULDERS
SCALE: 1/8\"/>



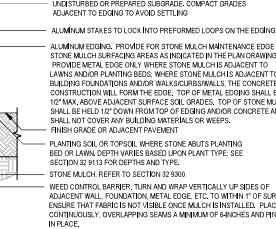
8 DECORATIVE LIMESTONE SLAB OUTCROPPING
SCALE: 1/8\"/>



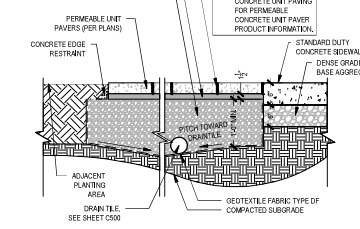
9 TYPICAL PLANTING BED EDGE
SCALE: 1/8\"/>



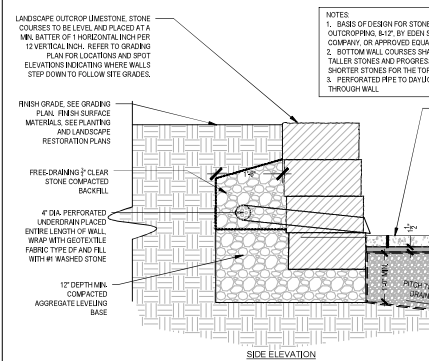
10 PLANTING BED EDGE WITH INTEGRATED LIMESTONE OUTCROPPING
SCALE: 1/8\"/>



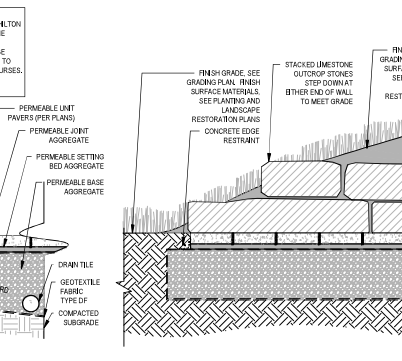
11 STONE MULCH SURFACING AND STONE MULCH MAINTENANCE EDGE
SCALE: 1/8\"/>



12 PERMEABLE UNIT PAVERS
SCALE: 1/8\"/>



13 STACKED LIMESTONE OUTCROPPINGS
SCALE: 1/8\"/>



14 FLAGSTONE STEPPERS
SCALE: 1/8\"/>



PROJECT INFORMATION
750 UNIVERSITY ROW EXPANSION

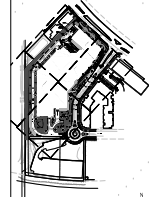
750 University Row
Madison, WI 53705

ISSUANCE AND REVISIONS

DATE	DESCRIPTION
05/15/2023	LOCK & LAND USE



KEY PLAN



SHEET INFORMATION

PROGRESS DOCUMENTS NOT FOR CONSTRUCTION

PROJECT MANAGER RB
PROJECT NUMBER 422291

PLANTING & LANDSCAPE DETAILS

L500