

**Atwood % for Arts Poetry in sidewalks proposal:
Madeleine Bohn - Madison's first Youth Poet Laureate**

Hands

*Cracked hands, whacked hands
Rough palms, healed by no balm
Grime-packed fingernails, blood leaking in small trails
Rough, chafed hands, splintering as they dig into land.*

*I think I shall keep
My hands*

Madeleine Bohn

Teakettle

*She collects the aged,
well-loved kettle
Passed through hand after hand,
gifted as greetings and goodbyes,
Fills with water, lets it settle
On the rusty little stovetop,
heat turned to high.*

Madeleine Bohn

Angela Trudell Vasquez – Madison Poet Laureate

Never More (two different panels name only on second panel)

*Love doesn't live here anymore
I kicked her out the door,
she made me weep,
she left me weak. I repeat.*

*Love doesn't live here anymore,
I'm all sore, my heart's broke,
and I can mope for days on end,
but I won't let her back in the door.*

Angela Trudell Vasquez

Blessed Be Creation

*in the orange sherbet sky
pink and purple rays glide by
brick and mortar
soars towards the Sound,
this is what I love about being alive
the colors of the night.*

Angela Trudell Vasquez

Dignity Sits (*center justified*)

*Dignity sits in a chair
In a room,
Chooses words carefully
Tasting the flavor of each one,
Listening to all those who
Like the sound of their own voice best.*

*Dignity decides who's fair.
Dignity waits his turn.*

Angela Trudell Vasquez

The Other America Tour Training Session

there's no question
these are hard times
and maybe there are
always bad times for some
but right now
this minute you
are green, beautiful
and young
and great days
are to come.

Angela Trudell Vasquez

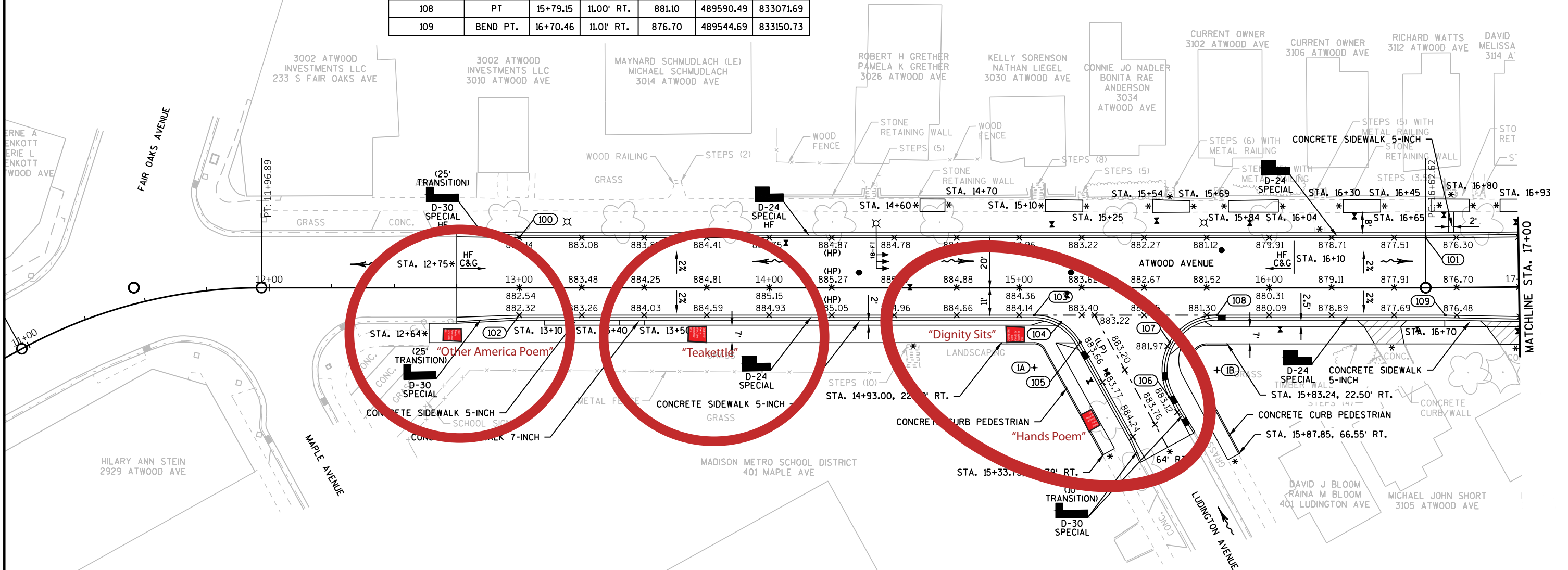
Eyes Alive

*There is looking in not looking.
The eyes reach out
From the picture
and claim,
I am, I was,
I did once exist,
and this is proof
Of my existence.*

Angela Trudell Vasquez

| CURB & GUTTER STAKING INFORMATION | | | | | | |
|-----------------------------------|-------------|----------|------------|-----------|-----------|-----------|
| POINT NUMBER | DESCRIPTION | STATION | OFFSET | ELEVATION | NORTHING | EASTING |
| 100 | BEND PT. | 13+00.00 | 20.00' LT. | 882.14 | 489757.25 | 832845.69 |
| 101 | PC | 16+62.62 | 20.00' LT. | 876.90 | 489575.47 | 833159.45 |
| 102 | BEND PT. | 13+00.00 | 11.00' RT. | 882.32 | 489730.43 | 832830.15 |
| 103 | PC | 15+06.07 | 11.00' RT. | 883.98 | 489627.12 | 833008.46 |
| 104 | MID PT. | 15+16.72 | 13.90' RT. | 883.78 | 489619.27 | 833016.22 |
| 105 | PT | 15+24.43 | 21.80' RT. | 883.67 | 489608.57 | 833018.93 |
| 106 | PC | 15+59.92 | 43.68' RT. | 882.84 | 489571.86 | 833038.67 |
| 107 | MID PT. | 15+60.19 | 21.84' RT. | 881.91 | 489590.61 | 833049.85 |
| 108 | PT | 15+79.15 | 11.00' RT. | 881.10 | 489590.49 | 833071.69 |
| 109 | BEND PT. | 16+70.46 | 11.01' RT. | 876.70 | 489544.69 | 833150.73 |

| CURB & GUTTER RADIUS STAKING INFORMATION | | | | | |
|--|--------|----------|------------|-----------|-----------|
| POINT NUMBER | RADIUS | STATION | OFFSET | NORTHING | EASTING |
| 1A | 20.00' | 15+06.07 | 32.00' RT. | 489608.95 | 832997.93 |
| 1B | 21.00' | 15+79.15 | 33.00' RT. | 489571.45 | 833060.66 |

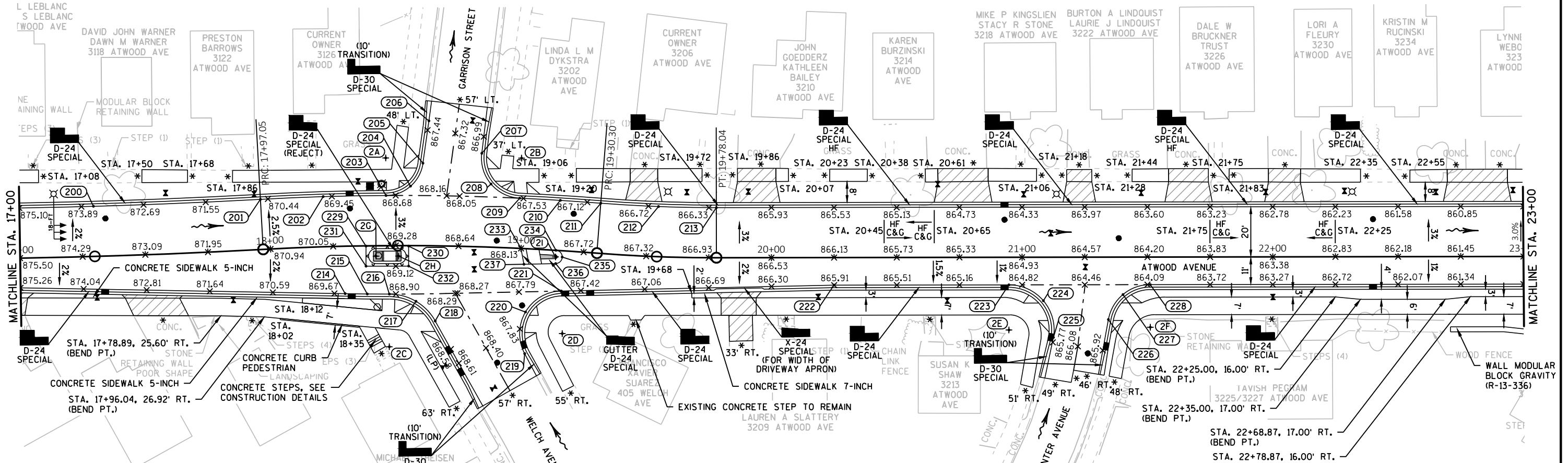




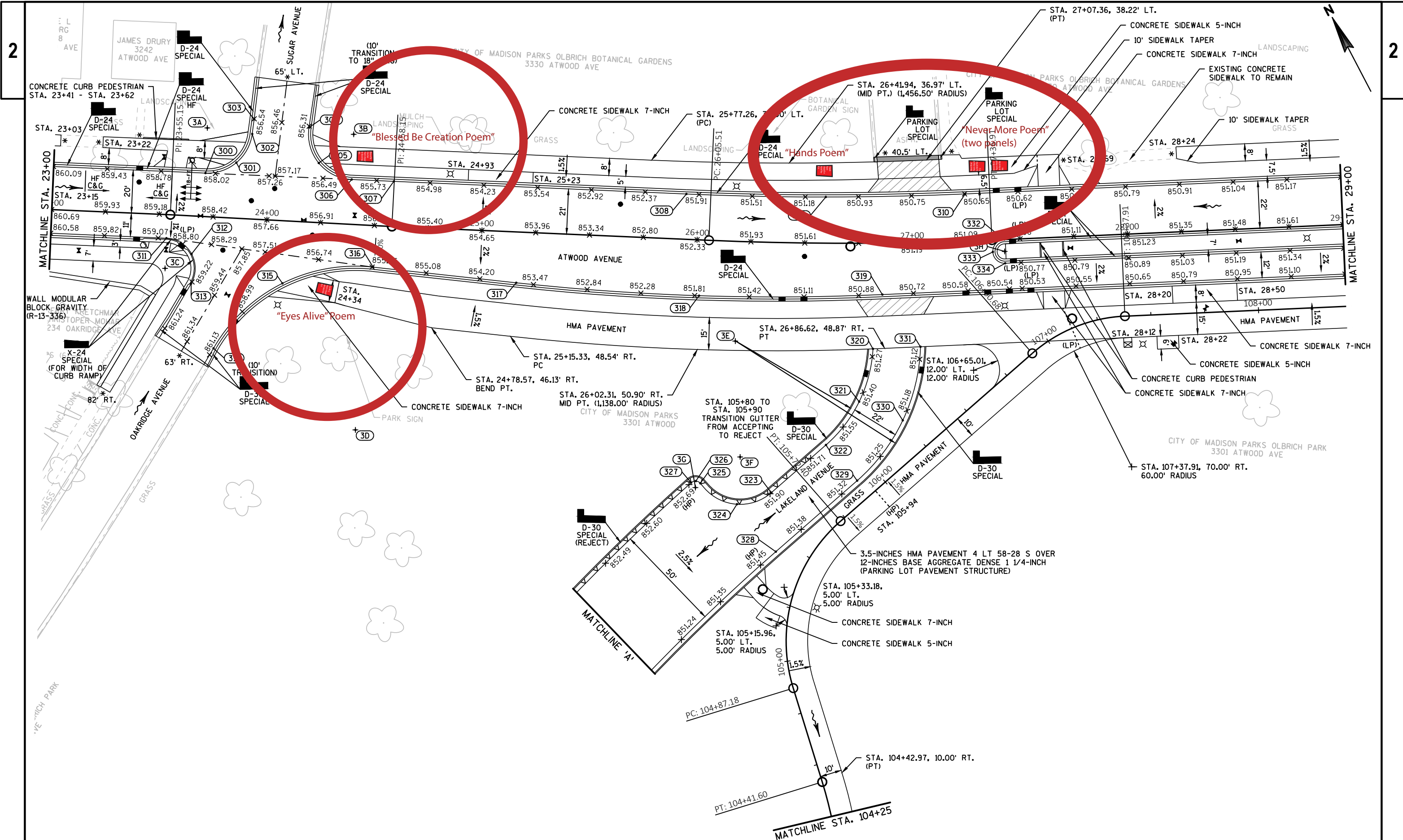
| CURB & GUTTER STAKING INFORMATION | | | | | | |
|-----------------------------------|-------------|----------|------------|-----------|-----------|-----------|
| POINT NUMBER | DESCRIPTION | STATION | OFFSET | ELEVATION | NORTHING | EASTING |
| 200 | MID PT. | 17+29.83 | 20.00' LT. | 873.66 | 489542.82 | 833217.59 |
| 201 | PT/PC | 17+97.05 | 20.00' LT. | 870.57 | 489511.75 | 833276.58 |
| 202 | MID PT. | 18+21.61 | 20.00' LT. | 869.58 | 489500.10 | 833298.76 |
| 203 | PT/PC | 18+46.18 | 20.00' LT. | 868.79 | 489487.91 | 833320.65 |
| 204 | MID PT. | 18+55.75 | 23.69' LT. | 868.47 | 489486.19 | 833330.97 |
| 205 | PT | 18+60.54 | 32.92' LT. | 868.11 | 489491.64 | 833339.90 |
| 206 | BEND PT. | 18+62.68 | 49.81' LT. | 867.26 | 489505.03 | 833350.44 |
| 207 | PC | 18+83.15 | 37.28' LT. | 867.23 | 489483.22 | 833362.16 |
| 208 | MID PT. | 18+87.11 | 25.17' LT. | 867.66 | 489470.79 | 833359.19 |
| 209 | PT/PC | 18+98.54 | 20.00' LT. | 867.56 | 489460.15 | 833366.27 |
| 210 | MID PT. | 19+14.42 | 20.00' LT. | 867.29 | 489451.26 | 833379.81 |
| 211 | PT/PC | 19+30.30 | 20.00' LT. | 867.04 | 489442.16 | 833393.22 |
| 212 | MID PT. | 19+54.17 | 20.00' LT. | 866.66 | 489429.42 | 833412.45 |

| CURB & GUTTER STAKING INFORMATION | | | | | | |
|-----------------------------------|-------------|----------|------------|-----------|-----------|-----------|
| POINT NUMBER | DESCRIPTION | STATION | OFFSET | ELEVATION | NORTHING | EASTING |
| 213 | PT | 19+78.04 | 20.00' LT. | 866.28 | 489417.46 | 833432.19 |
| 214 | PC | 18+29.35 | 18.95' RT. | 869.53 | 489462.20 | 833286.89 |
| 215 | MID PT. | 18+38.33 | 19.24' RT. | 869.24 | 489457.66 | 833294.45 |
| 216 | PT/PC | 18+47.32 | 19.37' RT. | 868.97 | 489453.20 | 833302.04 |
| 217 | MID PT. | 18+58.15 | 22.25' RT. | 868.83 | 489445.37 | 833309.77 |
| 218 | PT | 18+66.14 | 30.03' RT. | 868.71 | 489434.71 | 833312.47 |
| 219 | PC | 19+03.56 | 41.86' RT. | 867.93 | 489405.54 | 833336.78 |
| 220 | MID PT. | 19+03.05 | 25.29' RT. | 867.74 | 489419.70 | 833345.41 |
| 221 | PT | 19+17.13 | 16.08' RT. | 867.53 | 489419.77 | 833361.99 |
| 222 | BEND PT. | 20+24.93 | 11.00' RT. | 865.91 | 489367.13 | 833457.22 |
| 223 | PC | 20+94.69 | 11.00' RT. | 864.89 | 489332.17 | 833517.59 |
| 224 | MID PT. | 21+08.44 | 17.38' RT. | 865.13 | 489319.76 | 833526.28 |
| 225 | PT | 21+12.44 | 31.99' RT. | 865.61 | 489305.10 | 833522.42 |

| CURB & GUTTER STAKING INFORMATION | | | | | | |
|-----------------------------------|-------------|----------|------------|-----------|-----------|-----------|
| POINT NUMBER | DESCRIPTION | STATION | OFFSET | ELEVATION | NORTHING | EASTING |
| 226 | PC | 21+34.39 | 24.92' RT. | 864.92 | 489300.23 | 833544.96 |
| 227 | MID PT. | 21+40.23 | 14.94' RT. | 864.61 | 489305.94 | 833555.02 |
| 228 | PT | 21+51.10 | 11.00' RT. | 864.08 | 489303.89 | 833566.40 |
| 229 | BEGIN C&G | 18+38.11 | 0.13' RT. | 869.63 | 489474.42 | 833303.62 |
| 230 | END C&G | 18+55.11 | 0.20' RT. | 869.14 | 489465.90 | 833318.33 |
| 231 | BEGIN C&G | 18+38.00 | 8.13' RT. | 869.47 | 489467.50 | 833299.61 |
| 232 | END C&G | 18+55.14 | 8.20' RT. | 868.98 | 489458.98 | 833314.32 |
| 233 | BEGIN C&G | 19+00.00 | 0.00' . | 868.13 | 489442.55 | 833356.66 |
| 234 | PC | 19+13.92 | 0.00' . | 867.90 | 489434.90 | 833368.30 |
| 235 | MID PT. | 19+16.58 | 2.54' RT. | 867.81 | 489431.32 | 833369.09 |
| 236 | PT | 19+14.15 | 5.29' RT. | 867.79 | 489430.38 | 833365.54 |
| 237 | BEGIN C&G | 19+01.42 | 6.27' RT. | 867.98 | 489436.51 | 833354.44 |



| CURB & GUTTER RADIUS STAKING INFORMATION | | | | | |
|--|----------------|----------|------------|-----------|-----------|
| POINT NUMBER | RADIUS | STATION | OFFSET | NORTHING | EASTING |
| 2A | 14.00' | 18+46.18 | 35.00' LT. | 489500.92 | 833328.11 |
| 2B | 15.00' | 18+98.54 | 36.00' LT. | 489473.59 | 833374.94 |
| 2C | 20.00' | 18+47.19 | 40.37' RT. | 489435.05 | 833291.48 |
| 2D | 16.00' | 19+18.65 | 33.01' RT. | 489404.89 | 833353.77 |
| 2E | 17.00' | 20+94.69 | 29.00' RT. | 489316.59 | 833508.56 |
| 2F | 16.00' | 21+51.10 | 28.00' RT. | 489289.18 | 833557.88 |
| 2G | 3.00' | 18+42.07 | 4.17' RT. | 489468.96 | 833305.08 |
| 2H | 3.00' | 18+51.11 | 4.21' RT. | 489464.45 | 833312.87 |
| 2I | 2.65' (FLANGE) | 19+13.92 | 2.65' RT. | 489432.70 | 833366.83 |



PROJECT NO: 5992-10-16

HWY: ATWOOD AVENUE

COUNTY: DANE

PAVING DETAILS

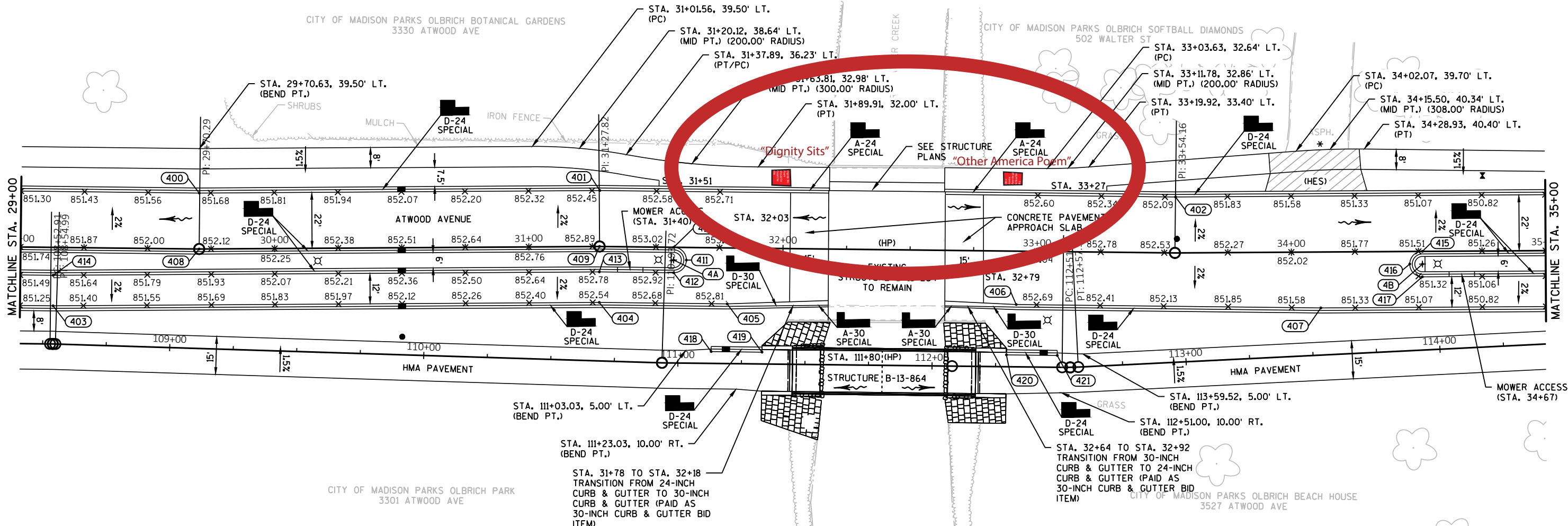
SHEET

E

| CURB & GUTTER STAKING INFORMATION | | | | | | |
|-----------------------------------|-------------|----------|------------|-----------|-----------|-----------|
| POINT NUMBER | DESCRIPTION | STATION | OFFSET | ELEVATION | NORTHING | EASTING |
| 400 | BEND PT. | 29+70.48 | 22.00' LT. | 851.66 | 488945.06 | 834301.56 |
| 401 | BEND PT. | 31+27.82 | 22.00' LT. | 852.47 | 488880.80 | 834445.44 |
| 402 | BEND PT. | 33+54.55 | 22.00' LT. | 852.04 | 488784.84 | 834650.60 |
| 403 | BEND PT. | 29+13.09 | 23.00' RT. | 851.32 | 488928.45 | 834230.86 |
| 404 | BEND PT. | 31+27.56 | 22.00' RT. | 852.56 | 488840.83 | 834427.05 |
| 405 | BEND PT. | 31+78.28 | 22.00' RT. | 852.84 | 488819.50 | 834472.64 |
| 406 | BEND PT. | 32+91.96 | 21.00' RT. | 852.78 | 488772.24 | 834576.04 |
| 407 | BEND PT. | 34+11.46 | 22.00' RT. | 851.46 | 488721.46 | 834684.62 |
| 408 | BEND PT. | 29+70.29 | 0.00' . | 852.10 | 488925.05 | 834292.42 |

| CURB & GUTTER STAKING INFORMATION | | | | | | |
|-----------------------------------|-------------|----------|------------|-----------|-----------|-----------|
| POINT NUMBER | DESCRIPTION | STATION | OFFSET | ELEVATION | NORTHING | EASTING |
| 409 | BEND PT. | 31+27.82 | 0.00' . | 852.91 | 488860.81 | 834436.26 |
| 410 | PC | 31+56.97 | 0.00' LT. | 853.06 | 488848.46 | 834462.66 |
| 411 | MID PT. | 31+62.01 | 4.96' RT. | 853.01 | 488841.83 | 834465.12 |
| 412 | PT | 31+57.05 | 10.00' RT. | 852.96 | 488839.37 | 834458.49 |
| 413 | BEND PT. | 31+27.67 | 10.00' RT. | 852.80 | 488851.74 | 834432.04 |
| 414 | BEND PT. | 29+12.98 | 11.00' RT. | 851.56 | 488939.37 | 834235.85 |
| 415 | PC | 34+51.53 | 0.00' . | 851.50 | 488725.20 | 834730.18 |
| 416 | MID PT. | 34+46.53 | 4.96' RT. | 851.56 | 488722.72 | 834723.59 |
| 417 | PT | 34+51.44 | 10.00' RT. | 851.30 | 488716.11 | 834726.02 |

| CURB & GUTTER RADIUS STAKING INFORMATION | | | | | |
|--|--------|----------|-----------|-----------|-----------|
| POINT NUMBER | RADIUS | STATION | OFFSET | NORTHING | EASTING |
| 4A | 4.00' | 31+57.01 | 5.00' RT. | 488843.91 | 834460.58 |
| 4B | 4.00' | 34+51.53 | 5.00' RT. | 488720.64 | 834728.14 |



| CURB & GUTTER STAKING INFORMATION | | | | | | |
|-----------------------------------|-------------|-----------|-----------|-----------|-----------|-----------|
| POINT NUMBER | DESCRIPTION | STATION | OFFSET | ELEVATION | NORTHING | EASTING |
| 418 | BEGIN C&G | 111+13.03 | 4.67' LT. | 854.83 | 488805.03 | 834459.12 |
| 419 | END C&G | 111+33.03 | 4.67' LT. | 854.97 | 488796.56 | 834477.24 |
| 420 | BEGIN C&G | 112+29.20 | 4.67' LT. | 854.96 | 488755.81 | 834564.35 |
| 421 | END C&G | 112+49.20 | 4.67' LT. | 854.81 | 488747.34 | 834582.46 |

| CURB & GUTTER STAKING INFORMATION | | | | | | |
|-----------------------------------|-------------|----------|------------|-----------|-----------|-----------|
| POINT NUMBER | DESCRIPTION | STATION | OFFSET | ELEVATION | NORTHING | EASTING |
| 500 | BEND PT. | 36+23.49 | 22.00' LT. | 849.50 | 488675.09 | 834896.34 |
| 501 | BEND PT. | 35+65.93 | 22.00' RT. | 849.93 | 488658.46 | 834825.66 |
| 502 | PC | 39+32.87 | 23.00' RT. | 850.78 | 488503.16 | 835157.69 |
| 503 | MID PT. | 39+67.56 | 23.30' RT. | 851.01 | 488488.19 | 835188.98 |
| 504 | PT | 40+02.25 | 24.21' RT. | 851.24 | 488472.67 | 835220.02 |
| 505 | BEGIN C&G | 37+02.85 | 45.00' RT. | 849.86 | 488580.69 | 834940.01 |
| 506 | BEGIN C&G | 37+30.85 | 45.00' RT. | 850.00 | 488568.82 | 834965.37 |
| 507 | BEND PT. | 36+23.49 | 0.00' . | 849.94 | 488655.08 | 834887.19 |

| CURB & GUTTER STAKING INFORMATION | | | | | | |
|-----------------------------------|-------------|----------|------------|-----------|-----------|-----------|
| POINT NUMBER | DESCRIPTION | STATION | OFFSET | ELEVATION | NORTHING | EASTING |
| 508 | PC | 36+85.27 | 0.00' . | 849.73 | 488628.90 | 834943.15 |
| 509 | MID PT. | 36+90.77 | 5.50' RT. | 849.79 | 488621.59 | 834945.80 |
| 510 | PT | 36+85.27 | 11.00' RT. | 849.71 | 488618.94 | 834938.49 |
| 511 | BEND PT. | 35+66.03 | 10.00' RT. | 850.17 | 488669.38 | 834830.65 |
| 512 | PC | 39+67.87 | 0.00' . | 851.47 | 488509.16 | 835199.14 |
| 513 | MID PT. | 39+62.38 | 5.40' RT. | 851.41 | 488506.60 | 835191.87 |
| 514 | PT | 39+67.68 | 11.00' RT. | 851.34 | 488499.28 | 835194.31 |

| CURB & GUTTER RADIUS STAKING INFORMATION | | | | | |
|--|--------|----------|-----------|-----------|-----------|
| POINT NUMBER | RADIUS | STATION | OFFSET | NORTHING | EASTING |
| 5A | 4.50' | 36+85.27 | 5.50' RT. | 488623.92 | 834940.82 |
| 5B | 4.50' | 39+67.87 | 5.50' RT. | 488504.18 | 835196.81 |

