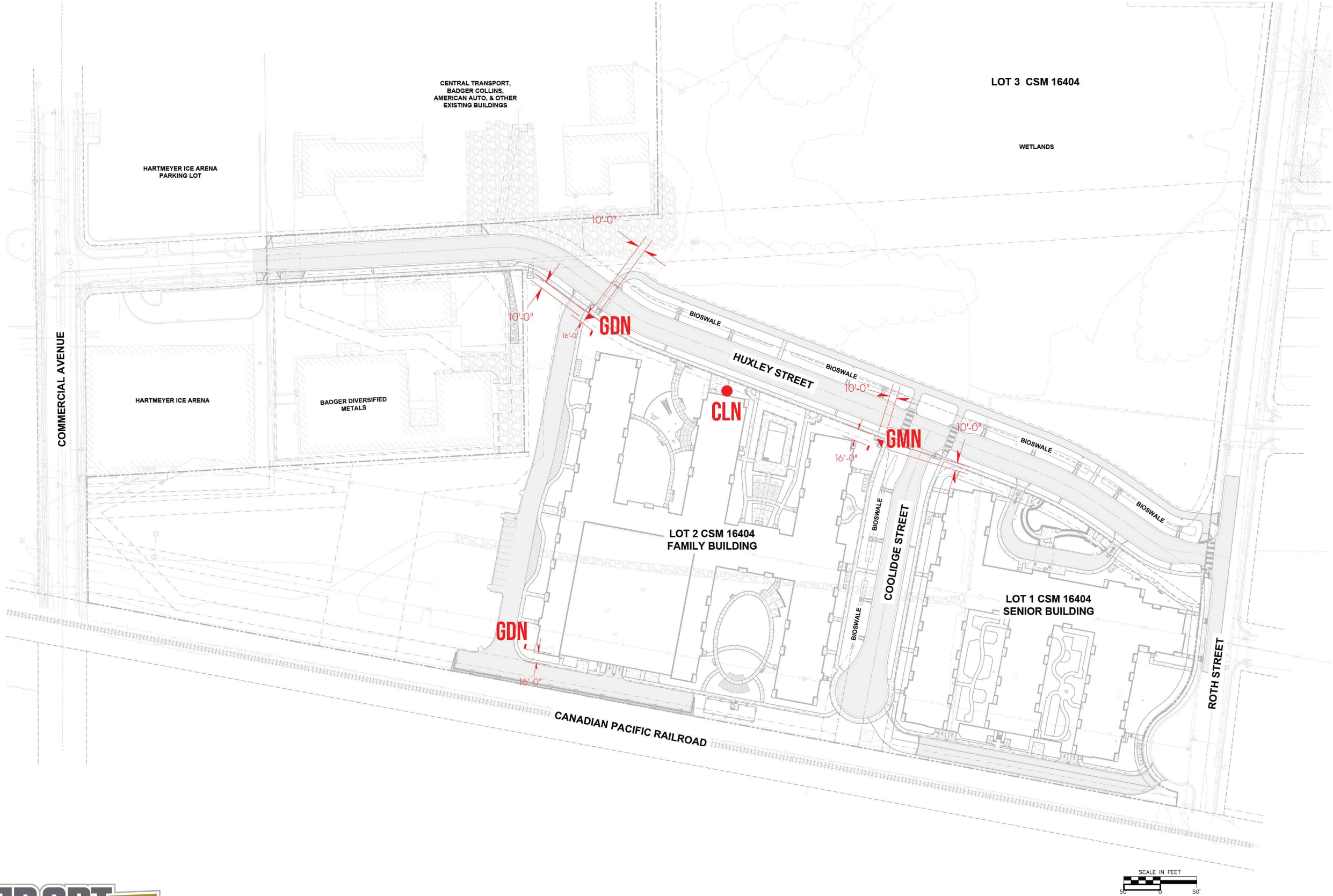




LINCOLN AVENUE CAPITAL – 03062024 – THE VIEW – EXTERIOR





1 CT
D/F



Scale 3/4"=1'

GROSS SQUARE FOOTAGE: 26.5' SQ.
NET SQUARE FOOTAGE: 8.77' SQ.

KEY NOTES:

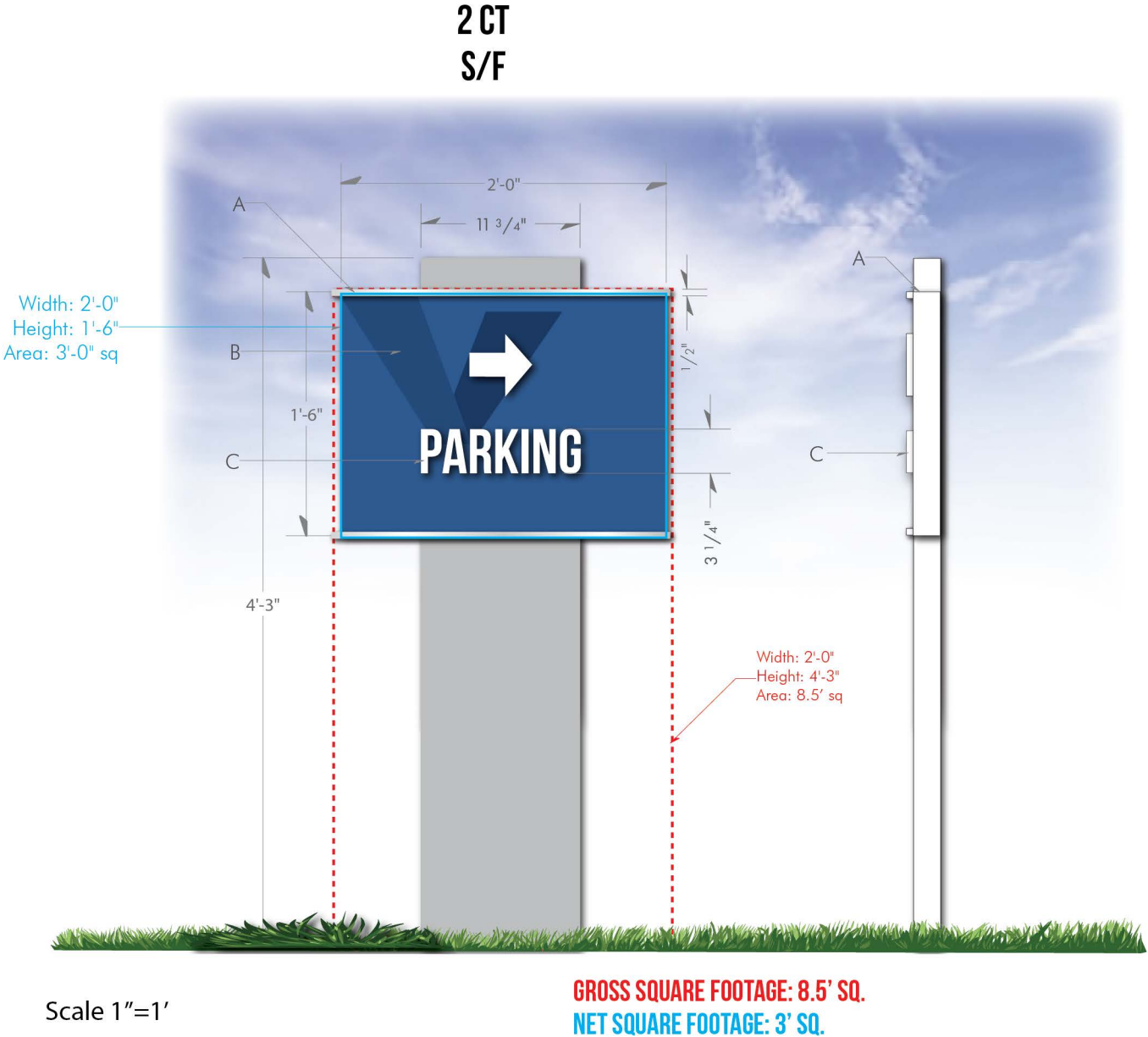
- A - D/F Non illuminated sign Aluminum tube frame construction Kin with .090 aluminum.
- B - 1/2" flat cut White PVC Logo icon and view. Logo icon to have a di cut digital print applied first surface.
- C - Vinyl Applied first surface.

FINISHES:

- White 1/2" PVC (B)
- 3M Medium Gray 7725-031
- MP Satin Sail boat blue MP02160
- MP Satin brushed aluminum 41342SP
- MP Satin to match Medium Gray 7725-031

CALCULATIONS:

NET SQUARE FOOTAGE: 8.77' SQ.
SIGN FACE: 12' SQ.



KEY NOTES:

- A - S/F Non illuminated sign Aluminum tube frame construction Kin with .090 aluminum.
- B - 1/2" flat cut PVC Text and arrow
- C - Logo to be a digital print applied first surface.

FINISHES:

- ☐ White 1/2" PVC (B)
- ☒ MP Satin Sail boat blue MP02160 (A)
- ☐ MP Satin brushed aluminum 41342SP (A)
- ☐ MP Satin to match Medium Gray 7725-031 (A)

CALCULATIONS:

NET SQUARE FOOTAGE: 3' SQ.

CUSTOMER APPROVAL: _____

DATE: _____

LANDLORD APPROVAL: _____

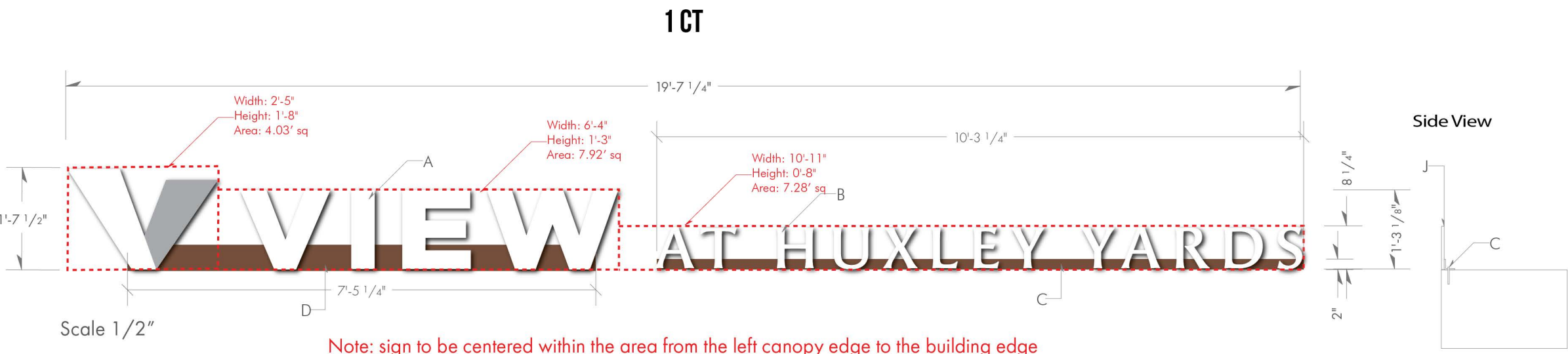
DATE: _____

By signing this approval you are hereby authorizing Sign Art Studio LLC to proceed with the work as described. Any deviation from these specifications will become the customer's financial responsibility.

© The above artwork and or conceptual design, less customer provided artwork or plans, is property of Sign Art Studio and may not be reproduced without written consent .

S H E E T

GDN

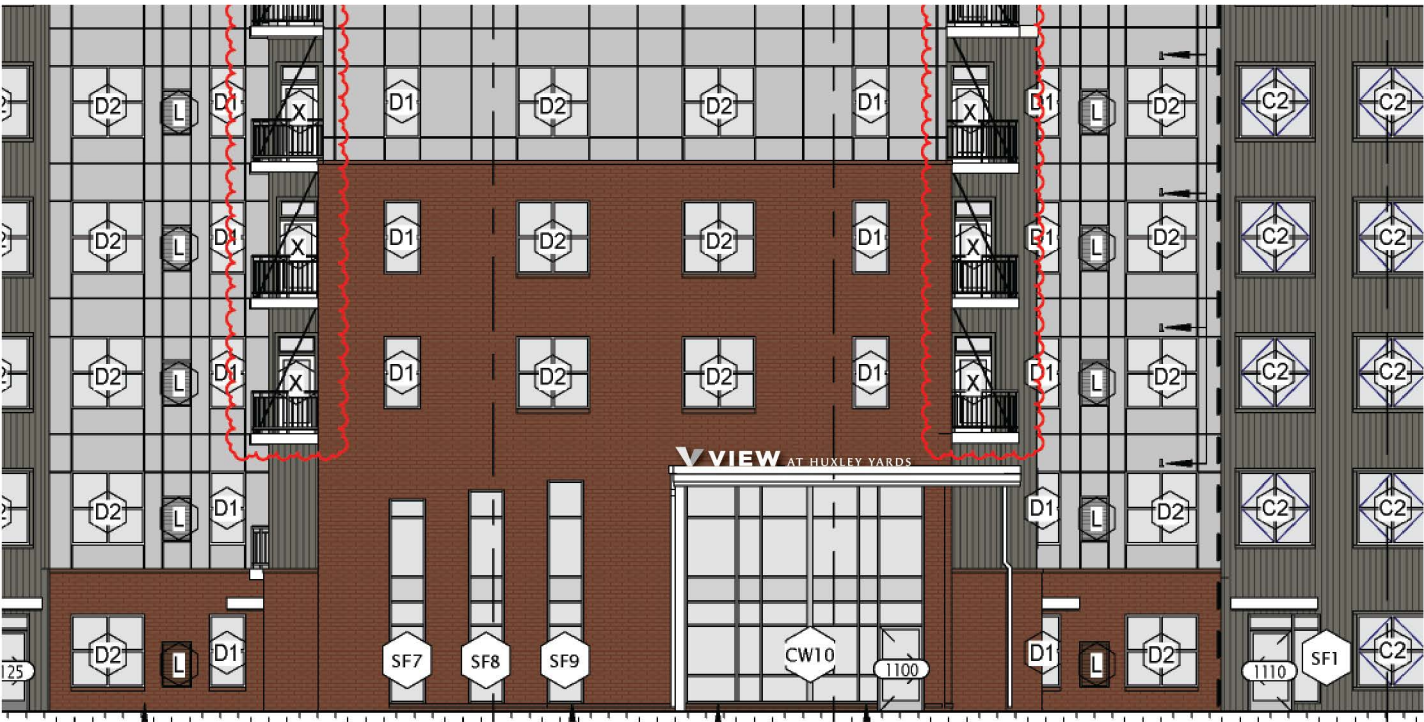
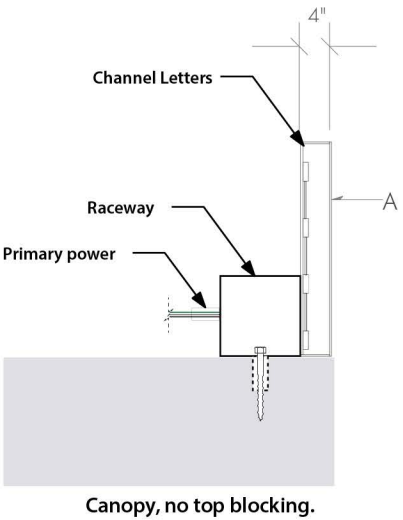


- KEY NOTES:
- A - 4" deep channel letters with 4" deep returns and trim cap to be stock white. illuminate with 3000K LED warm white faces to be .177 acrylic Logo to have trans viny applied first surface
 - B - 1/2" flat cut white acrylic
 - C - 2" angle paint to match building color
 - D - 5" Raceway Paint to match building color

- FINISHES:
- White Acrylic (B,A)
 - 3M Silver 3630-121 (A)
 - Satin Sequoia MP03122 (C,D)

CALCULATIONS:

SQUARE FOOTAGE: 19.23' SQ.



WEST ELEVATION / Scale 1/16"



WEST ELEVATION / Scale 1/16"

