

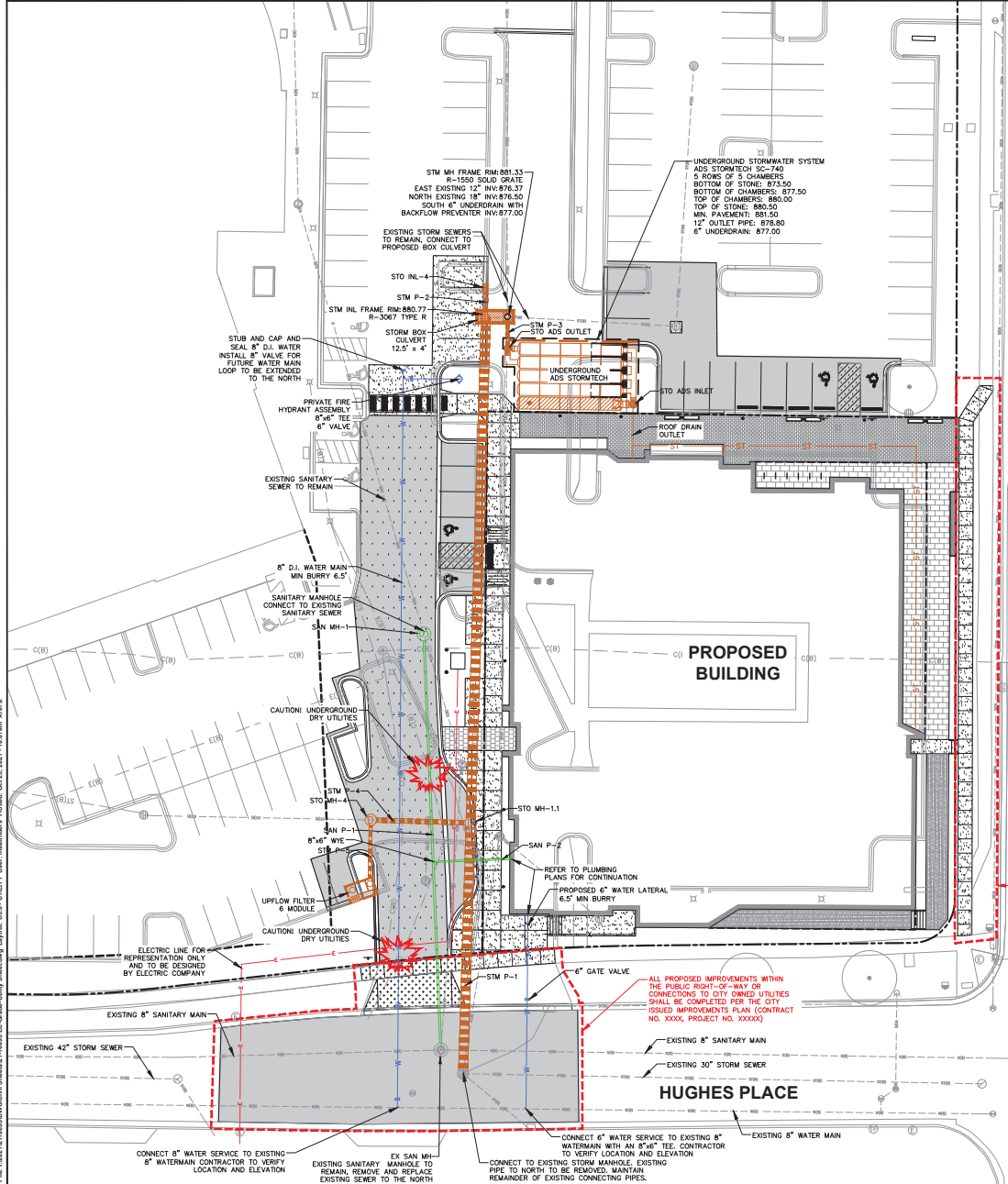
2352 S Park Street
Contract 9109
MUNIS 13766

Developer: ULGM Real Estate Holdings, Inc.



Summary of Improvements:

- Relocate sidewalk on S Park Street adjacent to the project to create an 8' wide terrace and 5' wide sidewalk. Grade to tie-in as needed and approved by City Engineer.
- Relocate private commercial drive entrance on Hughes Place.
- Relocation of existing private sanitary, storm, and water that serves the Villager Mall site in order to facilitate construction of 2352 S Park Street will require street restoration on Hughes Place.
- Private water service connection on Hughes Place.
- Repair or replace existing sidewalk, terrace, curb & gutter as needed
- Protect/remove/replace existing public street terrace trees per City Forestry



SOUTH PARK STREET



JSD
Professional Services, Inc.
Engineers • Surveyors • Planners

CREATE THE VISION TELL THE STORY

MADISON | MILWAUKEE | WAUSAU
APPLETON | KENOSHA | CHICAGO
COEUR D'ALENE

MADISON REGIONAL OFFICE
161 HORIZON DRIVE, SUITE 101
VERONA, WISCONSIN 53593
P. 608.848.5060

CLIENT:
URBAN LEAGUE OF GREATER MADISON

CLIENT ADDRESS:
2222 S. PARK ST, STE 200
MADISON, WI 53713

PROJECT:
THE HUB - ULMG VILLAGER ON PARK

PROJECT LOCATION:
2352 SOUTH PARK STREET
MADISON, WI 53713

PLAN MODIFICATIONS:

| # | Date | Description |
|----|----------|----------------------------|
| 1 | 06.28.21 | UDC INITIAL / FINAL |
| 2 | 08.03.21 | UDC RESUBMITTAL |
| 3 | 08.12.21 | RESPONSE TO COMMENTS |
| 4 | 08.26.21 | SITE PLAN REVIEW SUBMITTAL |
| 5 | 10.01.21 | SW & EC COMMENT RESPONSE |
| 6 | 10.26.21 | ADD |
| 7 | | |
| 8 | | |
| 9 | | |
| 10 | | |
| 11 | | |
| 12 | | |
| 13 | | |
| 14 | | |
| 15 | | |

Designed By: MBS
Reviewed By: AGC
Approved By:

SHEET TITLE:
UTILITY PLAN

SHEET NUMBER:
C5.0

800 PROJECT NO: 21-10005
21-10005

Toll Free (800) 242-8511

File: 102511018809020210005 EC-Grade-Utility-Sheet.dwg Layout: C5.0 - UTILITY User: msanders Date: 10/23/2021 1:02:17 PM Xref:

