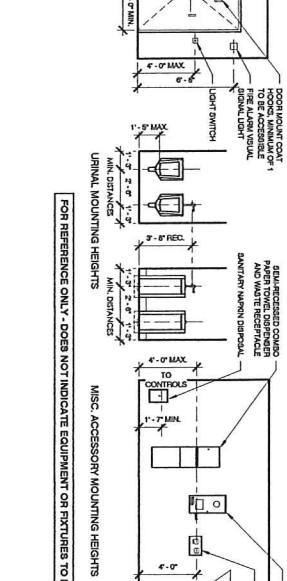
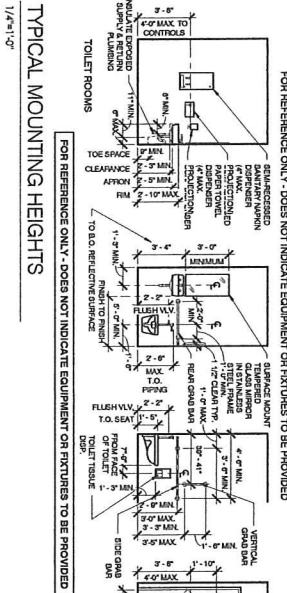
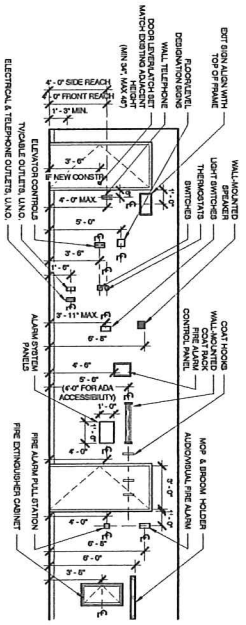
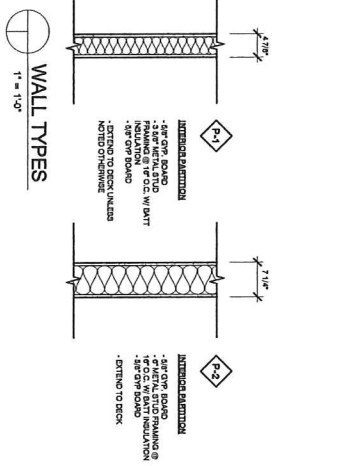
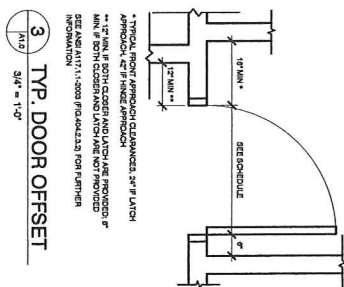


## Leopold, LLC Business Plan

Leopold Men's Salon, Leopold, LLC., a premium multi-service salon for men, will offer customized haircut and styling services, scalp massages, express and full manicures, as well as straight razor shaving with steamed towels, and full body waxing. We believe that education is the foundation of success; in house education will be provided continuously. Along with these services we wish to be able to offer our clients a variety of sample alcoholic beverages to help accentuate the relaxed, social environment we hope to provide.

**GENERAL NOTES:**

- ALL WORK UNDER THE CONTRACT SHALL BE PERFORMED IN STRICT COMPLIANCE WITH ALL LOCAL CODES.
- CONTRACTORS SHALL OBTAIN ALL PERMITS REQUIRED TO SPECIAL WORK IN ACCORDANCE WITH REQUIREMENTS AND PROCEDURES OF ANY AND ALL APPLICABLE JURISDICTIONS.
- CONTRACTOR SHALL FIELD VERIFY ALL EXISTING CONDITIONS, DIMENSIONS AND COORDINATES. THE CONTRACTOR SHALL NOTIFY THE ARCHITECT OF ANY DISCREPANCIES BETWEEN EXISTING CONDITIONS AND THE CONTRACT DOCUMENTS.
- CONTRACTORS SHALL REVIEW ALL CONTRACT DOCUMENTS AND NOTIFY THE ARCHITECT OF ANY CONCERNING ITEMS TO BE CLARIFIED.
- DO NOT SCALE THE DRAWINGS. IF A CONTRADICTION OCCURS WITHIN THE CONTRACT DOCUMENTS OR INFORMATION IS LACKING, THE CONTRACTOR SHALL NOTIFY THE ARCHITECT FOR CLARIFICATION.
- CONTRACTOR SHALL COORDINATE WITH THE WORK OF OTHERS NOT INCLUDED IN THE CONTRACT AS DIRECTED BY THE ARCHITECT.
- ALL JOB DIMENSIONS ARE TO FACE OF MASONRY UNLESS OTHERWISE NOTED.
- ALL VERTICAL DIMENSIONS TO BE ABOVE FINISH FLOOR (A.F.F.) UNLESS NOTED.
- THE WORK ALSO TO BE IN ACCORDANCE WITH THE LOCAL CODES AND REGULATIONS.
- ALL WORK SHALL BE IN ACCORDANCE WITH THE LOCAL CODES AND REGULATIONS.
- CONTRACTOR TO PROVIDE SHOP DRAWINGS SUBMITTED FOR OVERSIGHT, CLADDING, DOORS AND HARDWARE, AND OTHER SPECIALTY ITEMS PRIOR TO ORDERING.



PROJECT INFORMATION:	
CONTRACT NO.	19-0814
CONTRACTOR TYPE	ARCHITECT
NUMBER OF FLOOR PLANS	1
DATE SUBMITTED	10/8/2019

- ARCHITECTURAL**
- A1.0 TITLE SHEET, SHEET INDEX, OVERALL FLOOR PLAN, AND TYPICALS
  - A3.1 CONSTRUCTION PLAN, DOOR SCHEDULE, DOOR HARDWARE, AND DOOR/FRAME TYPES
  - A3.2 REFLECTED CEILING PLAN
  - A3.3 FINISH FLOOR PLAN, ROOM FINISH SCHEDULE, INTERIOR ELEVATIONS, AND DETAILS

**TENANT IMPROVEMENT FOR:  
LEOPOLD MEN'S SALON**  
117 S. HAMILTON ST.  
MADISON, WI 53703



633 E. Michigan St. | Suite 540 | Milwaukee, WI 53202  
ph. 414.278.6804 | www.instudioarch.com

**TENANT IMPROVEMENT FOR:  
LEOPOLD MEN'S SALON**  
117 S. HAMILTON ST.  
MADISON, WI 53703

**REVISIONS**

NO.	REV. DATE	DESCRIPTION
1	10/8/19	CONTRACTOR BULLETIN #1
2	10/8/19	CONTRACTOR BULLETIN #2

**PROJECT INFO**

Original Issue Date	9/24/19
Project No.	19-001
Drawn By	CK

**SHEET TITLE**  
TITLE SHEET, SHEET INDEX,  
OVERALL FLOOR PLAN, AND  
TYPICALS

**A1.0**

**FOR CONSTRUCTION**

**FLOOR PLAN GENERAL NOTES**

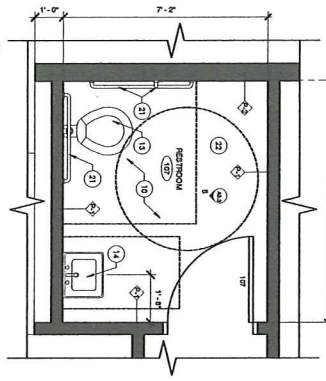
- A. EXISTING WALL TYPES WILL REMAIN UNLESS INDICATED OTHERWISE. NOTE: SEE SECTION AND ELEVATION FOR DIMENSIONS IN WALLS. WALLS TO BE REMOVED OR TO BE RECONSTRUCTED SHALL BE INDICATED BY AN OPEN LINE.
- B. SEE 1/4" = 1/8" FOR TYPICAL DIMENSIONS OF ROOM OPENINGS FROM ADJACENT WALL.
- C. PROVIDE THE FINISHED BUILDING IN WALL AND WALL LINING ELEMENTS IN FINISHED WALLS.
- D. INDICATE THE EXISTING LOCATION, SEE INTERIOR ELEVATION AND DETAIL.
- E. PROVIDE ROOM FINISHING IN ALL REQUIRED MECHANICAL, RESTROOMS AND FROM MANUFACTURERS RECOMMENDATIONS TO MAINTAIN WARRANTY.
- F. ROOM FINISHING SHALL BE PERFORMED IN STRICT COMPLIANCE WITH ALL LOCAL CODES, ORDINANCES AND REGULATIONS OF THE GOVERNMENT. PROVIDE FINISHING WITH REQUIREMENTS OF THE ARCHITECT. PROVIDE FINISHING WITH REQUIREMENTS OF THE ARCHITECT.
- G. CONTRACTOR SHALL VERIFY ALL EXISTING CONDITIONS, DIMENSIONS AND CONDITIONS. THE CONTRACTOR SHALL VERIFY THE ARCHITECT'S REQUIREMENTS AND THE CONTRACT DOCUMENTS.
- H. CONTRACTOR SHALL VERIFY THE CONTRACT DOCUMENTS AND NOTIFY THE ARCHITECT OF ANY CONFLICTING INFORMATION. PROVIDE FINISHING WITH REQUIREMENTS OF THE ARCHITECT.
- I. CONTRACTOR SHALL VERIFY THE CONTRACT DOCUMENTS AND NOTIFY THE ARCHITECT OF ANY CONFLICTING INFORMATION. PROVIDE FINISHING WITH REQUIREMENTS OF THE ARCHITECT.
- J. CONTRACTOR SHALL VERIFY THE CONTRACT DOCUMENTS AND NOTIFY THE ARCHITECT OF ANY CONFLICTING INFORMATION. PROVIDE FINISHING WITH REQUIREMENTS OF THE ARCHITECT.
- K. CONTRACTOR SHALL VERIFY THE CONTRACT DOCUMENTS AND NOTIFY THE ARCHITECT OF ANY CONFLICTING INFORMATION. PROVIDE FINISHING WITH REQUIREMENTS OF THE ARCHITECT.
- L. CONTRACTOR SHALL VERIFY THE CONTRACT DOCUMENTS AND NOTIFY THE ARCHITECT OF ANY CONFLICTING INFORMATION. PROVIDE FINISHING WITH REQUIREMENTS OF THE ARCHITECT.
- M. CONTRACTOR SHALL VERIFY THE CONTRACT DOCUMENTS AND NOTIFY THE ARCHITECT OF ANY CONFLICTING INFORMATION. PROVIDE FINISHING WITH REQUIREMENTS OF THE ARCHITECT.
- N. ALL INTERIOR FLOOR DIMENSIONS ARE TO FACE OF INTERIOR FINISH ON CENTER OF WALL, UNLESS OTHERWISE NOTED.
- O. ALL VERTICAL DIMENSIONS TO BE ABOVE FINISH FLOOR (A.F.F.) UNLESS OTHERWISE NOTED.
- P. THE WORD ALLEN AS USED IN THESE DOCUMENTS SHALL MEAN TO ACCURATELY LOCATE FINISH FINISHES IN THE SAME PLACE.
- Q. ALL ROOMS USED IN CONSTRUCTION WITH STOPS SHALL BE FINISHED TO RESOLVE OPEN WITHOUT THE USE OF A FINISH PLAN.
- R. NOT USED.
- S. PROVIDE FINISHING WITH REQUIREMENTS OF THE ARCHITECT.
- T. PROVIDE FINISHING WITH REQUIREMENTS OF THE ARCHITECT.
- U. PROVIDE FINISHING WITH REQUIREMENTS OF THE ARCHITECT.
- V. PROVIDE FINISHING WITH REQUIREMENTS OF THE ARCHITECT.
- W. CONTRACTOR SHALL VERIFY THE CONTRACT DOCUMENTS AND NOTIFY THE ARCHITECT OF ANY CONFLICTING INFORMATION. PROVIDE FINISHING WITH REQUIREMENTS OF THE ARCHITECT.
- X. PROVIDE FINISHING WITH REQUIREMENTS OF THE ARCHITECT.

**DOOR HARDWARE**

HW #	Hardware	Notes
1	HW-101	HW-101
2	HW-102	HW-102
3	HW-103	HW-103
4	HW-104	HW-104
5	HW-105	HW-105
6	HW-106	HW-106
7	HW-107	HW-107
8	HW-108	HW-108
9	HW-109	HW-109
10	HW-110	HW-110

1. CONTRACTOR SHALL VERIFY THE CONTRACT DOCUMENTS AND NOTIFY THE ARCHITECT OF ANY CONFLICTING INFORMATION. PROVIDE FINISHING WITH REQUIREMENTS OF THE ARCHITECT.
2. CONTRACTOR SHALL VERIFY THE CONTRACT DOCUMENTS AND NOTIFY THE ARCHITECT OF ANY CONFLICTING INFORMATION. PROVIDE FINISHING WITH REQUIREMENTS OF THE ARCHITECT.
3. CONTRACTOR SHALL VERIFY THE CONTRACT DOCUMENTS AND NOTIFY THE ARCHITECT OF ANY CONFLICTING INFORMATION. PROVIDE FINISHING WITH REQUIREMENTS OF THE ARCHITECT.
4. CONTRACTOR SHALL VERIFY THE CONTRACT DOCUMENTS AND NOTIFY THE ARCHITECT OF ANY CONFLICTING INFORMATION. PROVIDE FINISHING WITH REQUIREMENTS OF THE ARCHITECT.
5. CONTRACTOR SHALL VERIFY THE CONTRACT DOCUMENTS AND NOTIFY THE ARCHITECT OF ANY CONFLICTING INFORMATION. PROVIDE FINISHING WITH REQUIREMENTS OF THE ARCHITECT.
6. CONTRACTOR SHALL VERIFY THE CONTRACT DOCUMENTS AND NOTIFY THE ARCHITECT OF ANY CONFLICTING INFORMATION. PROVIDE FINISHING WITH REQUIREMENTS OF THE ARCHITECT.
7. CONTRACTOR SHALL VERIFY THE CONTRACT DOCUMENTS AND NOTIFY THE ARCHITECT OF ANY CONFLICTING INFORMATION. PROVIDE FINISHING WITH REQUIREMENTS OF THE ARCHITECT.
8. CONTRACTOR SHALL VERIFY THE CONTRACT DOCUMENTS AND NOTIFY THE ARCHITECT OF ANY CONFLICTING INFORMATION. PROVIDE FINISHING WITH REQUIREMENTS OF THE ARCHITECT.
9. CONTRACTOR SHALL VERIFY THE CONTRACT DOCUMENTS AND NOTIFY THE ARCHITECT OF ANY CONFLICTING INFORMATION. PROVIDE FINISHING WITH REQUIREMENTS OF THE ARCHITECT.
10. CONTRACTOR SHALL VERIFY THE CONTRACT DOCUMENTS AND NOTIFY THE ARCHITECT OF ANY CONFLICTING INFORMATION. PROVIDE FINISHING WITH REQUIREMENTS OF THE ARCHITECT.

**3 ENLARGED RESTROOM PLAN**  
 1/2" = 1/8"



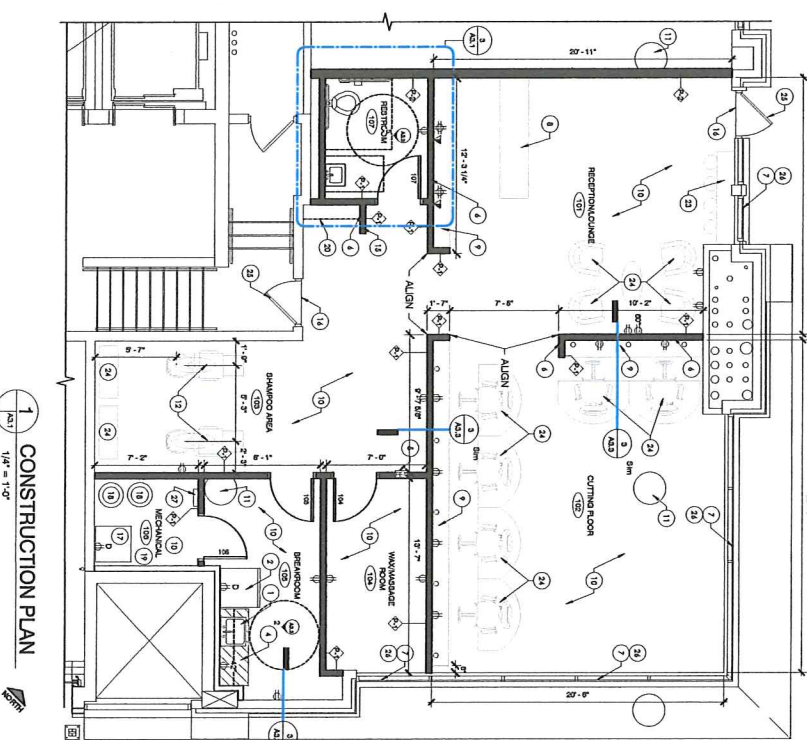
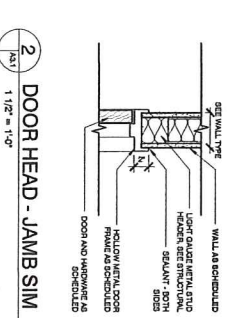
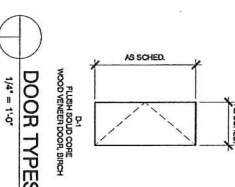
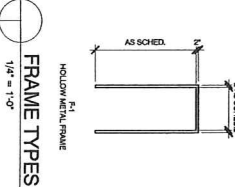
**DOOR SCHEDULE**

Door #	Type	Width	Height	Thickness	Material	Finish	Hardware	Notes	Comments
101	SI	2'-0"	8'-0"	1-1/2"	WOOD	WOOD	HW-101	WOOD	
102	SI	2'-0"	8'-0"	1-1/2"	WOOD	WOOD	HW-101	WOOD	
103	SI	2'-0"	8'-0"	1-1/2"	WOOD	WOOD	HW-101	WOOD	
104	SI	2'-0"	8'-0"	1-1/2"	WOOD	WOOD	HW-101	WOOD	
105	SI	2'-0"	8'-0"	1-1/2"	WOOD	WOOD	HW-101	WOOD	
106	SI	2'-0"	8'-0"	1-1/2"	WOOD	WOOD	HW-101	WOOD	
107	SI	2'-0"	8'-0"	1-1/2"	WOOD	WOOD	HW-101	WOOD	
108	SI	2'-0"	8'-0"	1-1/2"	WOOD	WOOD	HW-101	WOOD	
109	SI	2'-0"	8'-0"	1-1/2"	WOOD	WOOD	HW-101	WOOD	
110	SI	2'-0"	8'-0"	1-1/2"	WOOD	WOOD	HW-101	WOOD	

**POWER & DATA LEGEND**

○	EXISTING POWER OUTLET
○	NEW POWER OUTLET
○	EXISTING DATA OUTLET
○	NEW DATA OUTLET
○	EXISTING UNDERFLOOR OUTLET
○	NEW UNDERFLOOR OUTLET
○	EXISTING HANGING DOWN OUTLET
○	NEW HANGING DOWN OUTLET

THIS DRAWING INDICATES THE GENERAL LOCATION OF ELECTRICAL AND DATA OUTLETS. THE ARCHITECT SHALL PROVIDE THE EXACT LOCATION AND TYPE OF ELECTRICAL AND DATA OUTLETS. THE CONTRACTOR SHALL VERIFY THE LOCATION AND TYPE OF ELECTRICAL AND DATA OUTLETS. THE CONTRACTOR SHALL VERIFY THE LOCATION AND TYPE OF ELECTRICAL AND DATA OUTLETS.



**1 CONSTRUCTION PLAN**  
 1/4" = 1/8"

**PROJECT INFO**

Original Issue Date: 10/04/19  
 Project No.: 19 001  
 Drawn By: CK

**REVISIONS**

NO.	REVISION	DESCRIPTION
1	10/04/19	CONSTRUCTION PLAN

**TENANT IMPROVEMENT FOR:**  
**LEOPOLD MEN'S SALON**

117 S. HAMILTON ST.  
 MADISON, WI 53703

**in.studio**  
 architecture

833 E. Michigan St. | Suite 540 | Milwaukee, WI 53202  
 ph. 414.278.6504 | www.instudioarch.com



