

**APPLICATION FOR  
URBAN DESIGN COMMISSION  
REVIEW AND APPROVAL**

**AGENDA ITEM # \_\_\_\_\_**  
**Project # \_\_\_\_\_**  
**Legistar # \_\_\_\_\_**

DATE SUBMITTED: _____	<b>Action Requested</b>
UDC MEETING DATE: <u>4/17/2013</u>	<input type="checkbox"/> Informational Presentation
	<input checked="" type="checkbox"/> Initial Approval and/or Recommendation
	<input checked="" type="checkbox"/> Final Approval and/or Recommendation

**PLEASE PRINT!**

**PLEASE PRINT!**

PROJECT ADDRESS: 6602 Dominion Drive

ALDERMANIC DISTRICT: 3

OWNER/DEVELOPER (Partners and/or Principals)

Door Creek Church c/o Randy Olson  
6602 Dominion Drive  
Madison, WI 53718

ARCHITECT/DESIGNER/OR AGENT:

Strang, Inc. c/o Dale Volkening  
6411 Mineral Point Road  
Madison, WI 53705

CONTACT PERSON: Strang, Inc. c/o Dale Volkening

Address: (same as above)

Phone: 608-276-9200

Fax: 608-276-9204

E-mail address: volkening@strang-inc.com

**TYPE OF PROJECT:**

(See Section A for:)

- Planned Unit Development (PUD)
- General Development Plan (GDP)
- Specific Implementation Plan (SIP)
- Planned Community Development (PCD)
- General Development Plan (GDP)
- Specific Implementation Plan (SIP)
- Planned Residential Development (PRD)
- New Construction or Exterior Remodeling in an Urban Design District \* (A public hearing is required as well as a fee)
- School, Public Building or Space (Fee may be required)
- New Construction or Addition to or Remodeling of a Retail, Hotel or Motel Building Exceeding 40,000 Sq. Ft.
- Planned Commercial Site

(See Section B for:)

- New Construction or Exterior Remodeling in C4 District (Fee required)

(See Section C for:)

- R.P.S.M. Parking Variance (Fee required)

(See Section D for:)

- Comprehensive Design Review\* (Fee required)
- Street Graphics Variance\* (Fee required)
- Other \_\_\_\_\_

\*Public Hearing Required (Submission Deadline 3 Weeks in Advance of Meeting Date)

Where fees are required (as noted above) they apply with the first submittal for either initial or final approval of a project.



April 9, 2013

**Madison Urban Design Commission**

215 Martin Luther King Jr. Blvd., Room LL-100  
P.O. Box 2895  
Madison, WI 53701-2985

Re: UDC Application for Door Creek Church – Phase II

Attached are 14 copies of the following for the referenced project:

- 1) UDC Application;
- 2) Location Map;
- 3) Landscape Point Tabulation and Plant Schedules;
- 4) Light Fixture Cut Sheets;
- 5) Letter of Intent
  - a. Letter;
  - b. Amended General Development Plan (3/20/2000);
  - c. Door Creek Church Sign Photo;
  - d. Existing Building Photos;
  - e. Rendering of Existing Building with Phase II Addition;
- 6) Site Plans (24"x36")
  - a. Existing Site and Demolition Plan (Sheet C101);
  - b. Site Plan (Sheet C102);
  - c. Grading and Erosion Control Plan (Sheet C103);
  - d. Grading and Erosion Control Plan - Overall (Sheet C104);
  - e. Utility and Fire Access Plan (Sheet C105);
  - f. Site Plan - Overall (Sheet C106);
  - g. Landscape Plan (Sheet L100);
  - h. Landscape Plan - Alternate Chapel Area (Sheet L100);
  - i. Landscape Plan - Garage (Sheet L102);
  - j. Lighting Plan;
  - k. Exterior Elevations West and East (Sheet A401);
  - l. Exterior Elevations North and South (Sheet A402);

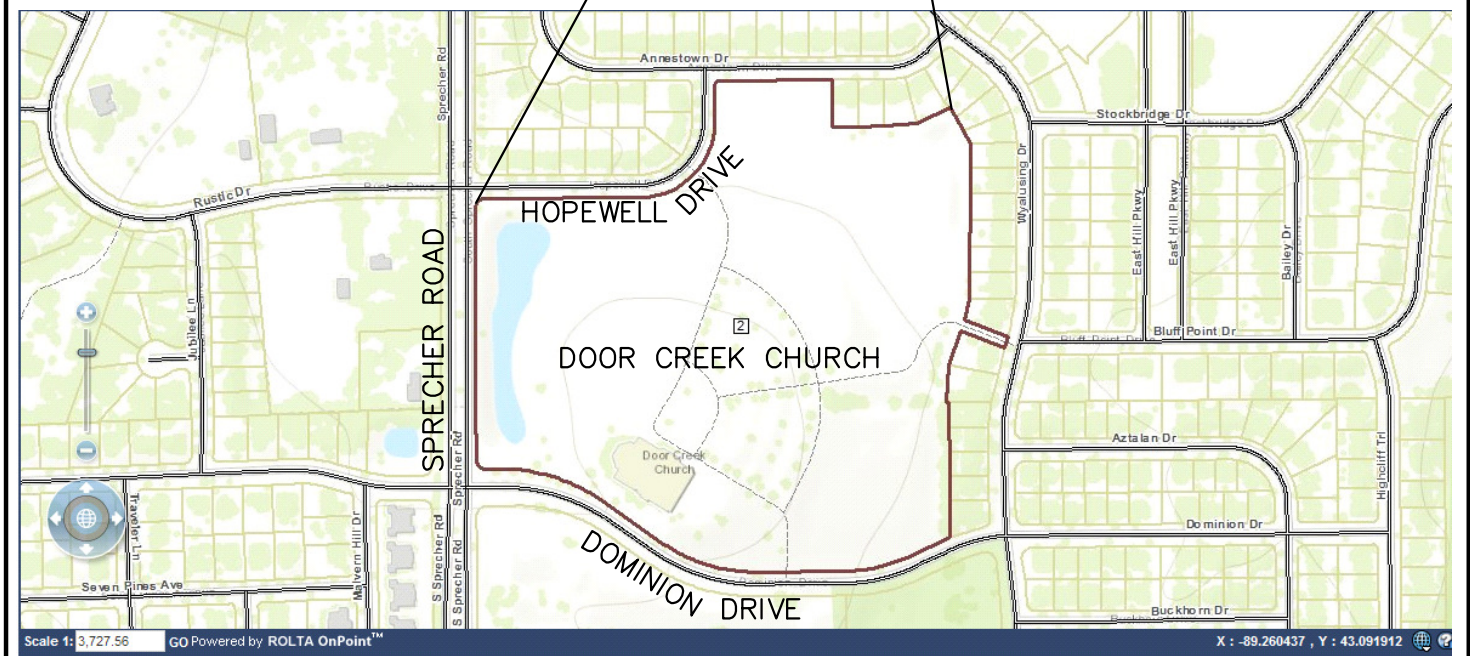
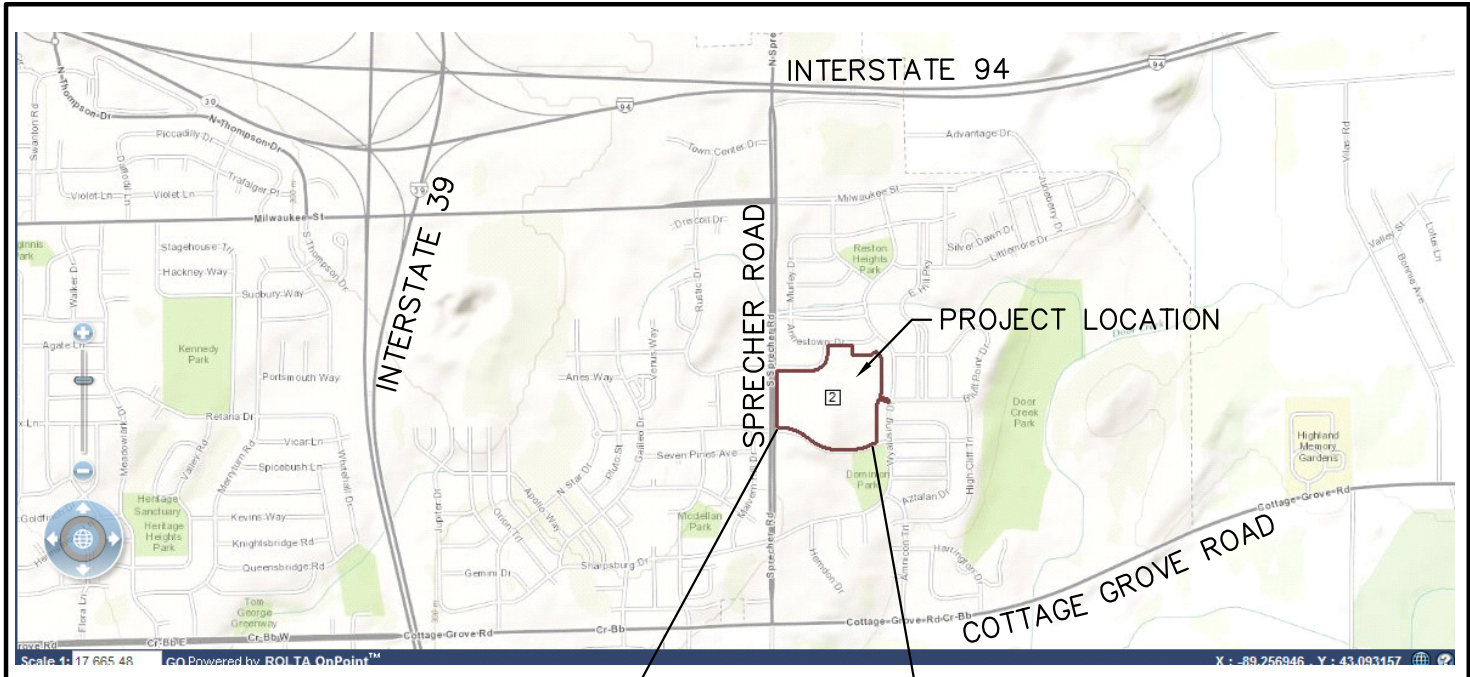
If you have any questions or comments, please feel free to contact me.

Sincerely,

Ryan D. Quam, P.E.

Cc: Dale Volkening (Strang, Inc.) w/ enc. 1-4  
Randy Olson (Door Creek Church) w/ enc. 1-4  
Vince Laufenberg (NCI-Roberts) w/ enc. 1-4

FN: RC-10-13



# LOCATION MAP

## EXHIBIT #2

### Door Creek Church Landscape Plan Plant Schedule

Symbol	Botanical Plant Name	Common Plant Name	Size	Root Condition
PFB	Fagus sylvatica 'Purple Fountain'	Purple Fountain Beech	#5	CG
WSB3	Betula populifolia 'Whitespire'	Whitespire Birch Clump	1 1/2"	B&B
BN	Juglans cinerea	Butternut	1 1/2"	B&B
NC	Catalpa speciosa	Northern Catalpa	1 1/2"	B&B
ABS	Amelanchier 'Autumn Brilliance' (tree form)	Autumn Brilliance Serviceberry	#15	CG
CBC	Malus 'Coralburst'	Coralburst Flowering Crab	#10	CG
GRC	Malus transitoria 'Schmidcutleaf'	Golden Raindrops Flowering Crab	1 1/4"	CG
PSC	Malus 'Pink Spires'	Pink Spire Flowering Crab	#15	CG
IMC	Malus 'Indian Magic'	Indian Magic Flowering Crab	1 1/4"	B&B
ZC	Malus x 'Zumi'	Zumi Flowering Crab	1 1/4"	B&B
STC	Malus 'Sutyzam'	Sugar Tyme Flowering Crab	1 1/4"	B&B
SSC	Malus 'Spring Snow'	Spring Snow Flowering Crab	#15	CG
RSC	Malus 'Red Splendor'	Red Splendor Flowering Crab	1 1/4"	B&B
SDC	Malus 'Snowdrift'	Snowdrift Flowering Crab	1 1/4"	B&B
PPC	Malus 'Purple Prince'	Purple Prince Flowering Crab	1 1/4"	B&B
NHE	Ulmus x 'New Horizon'	New Horizon Elm	2'	B&B
HB	Celtis occidentalis	Hackberry	#25	CG
SKL	Gleditsia tricanthos 'Skycole'	Skyline Honeylocust	2"	B&B
IW	Ostrya virginiana	Ironwood	#25	CG



### Door Creek Church Landscape Plan Plant Schedule

<b>Symbol</b>	<b>Botanical Plant Name</b>	<b>Common Plant Name</b>	<b>Size</b>	<b>Root Condition</b>
KC	Gymnocladus dioica	Kentucky Coffeetree	2"	B&B
AGG	Gingko biloba 'Autumn Gold'	Autumn Gold Gingko	#10	CG
TCH	Crataegus crusgalli 'inermis'	Thornless Cockspur Hawthorne	#25	CG
WHT	Crataegus phaenopyrum (tree fo	Washington Hawthorne	1 1/4"	B&B
WKH	Crataegus virdis 'Winter King' (tree fo	Winter King Hawthorne	1 1/2"	B&B
HN	Corylus colurna	Turkish Hazelnut	1 1/4"	B&B
ASL	Tilia americana 'McKSentry'	American Sentry Linden	#25	CG
PL	Syringa meyeri 'Palibin' (tree fo	Dwarf Korean Lilac	#10	CG
JTL	Syringa reticulata 'Ivory Silk' (tree fo	Ivory Silk Lilac	#20	CG
BL	Syringa x Penda (tree	Bloomerang Lilac	#10	CG
ABM	Acer x freemanii 'Jerffersred'	Autumn Blaze Maple	#25	CG
BBM	Acer rubrum 'Magnificent Magenta'	Burgundy Belle Maple	1 1/2"	B&B
FFM	Acer saccharum 'Bail'	Fall Fiesta Maple	#20	CG
SGM	Acer x freemanii 'Sienna Glen'	Sienna Glen Maple	2"	B&B
RSM	Acer rubrum 'Franksred'	Red Sunset Maple	2"	B&B
SSM	Acer miyabei 'Morton'	State Street Maple	1 1/2"	B&B
SWO	Quercus bicolor	Swamp White Oak	#15	CG
NPO	Quercus ellipsoidalis	Northern Pin Oak	1 1/2"	B&B
QA	Populus tremuloides	Quaking Aspen	1 1/2"	B&B

### Door Creek Church Landscape Plan Plant Schedule

<b>Symbol</b>	<b>Botanical Plant Name</b>	<b>Common Plant Name</b>	<b>Size</b>	<b>Root Condition</b>
QA2	Populus tremuloides	Quaking Aspen Twin	#20`	CG
QA3	Populus tremuloides	Quaking Aspen Clump	#20`	CG
BW	Juglans nigra	Black Walnut	1 1/2"	B&B
CF	Abies concolor	White Fir	3'	B&B
AJ	Juniperus horizontalis 'Compacta'	Andorra Juniper	#3	CG
GJ	Juniperus virginana 'Grey Owl'	Grey Owl Juniper	#3	CG
PJ	Juniper chinensis 'Pftizeriana'	Pfizer Juniper	#5	CG
SJ	Juniper chinensis 'Sea Green'	Sea Green Juniper	#5	CG
MRC	Microbiata decussata	Russian Cypress	#3	CG
U-AJ	Juniperus chinensis 'Ames'	Ames Juniper	4'	B&B
U-BJ	Juniperus virginana 'Blue Arrow'	Blue Arrow Juniper	6'	B&B
U-IJ	Juniperus chinensis 'Iowa'	Iowa Juniper	5'	B&B
U-MJ	Juniper chinensis 'Mountbatten'	Mountbatten Juniper	4'	B&B
U-SJ	Juniperus 'Select'	Star Power Juniper	6'	B&B
U-TJ	Juniperus virginana 'Taylor'	Taylor Juniper	5'	B&B
FP	Pinus nigra 'Compacta'	Frank Austrian Pine	#10	CG
AP	Pinus nigra	Austrian Pine	5'	B&B
SP	Pinus sylvestris	Scots Pine	5'	B&B
VP	Pinus flexilis	Vanderwolf's Pyramid Pine	#10	CG

## Door Creek Church Landscape Plan Plant Schedule

<b>Symbol</b>	<b>Botanical Plant Name</b>	<b>Common Plant Name</b>	<b>Size</b>	<b>Root Condition</b>	
BHS	<i>Picea glauca densata</i>	Black Hills Spruce	4'	B&B	
CGS	<i>Picea pungens</i>	Colorado Green Spruce	4'	B&B	

### Door Creek Church Landscape Plan Plant Schedule

Symbol	Botanical Plant Name	Common Plant Name	Size	Root Condition
WSB3	Betula populifolia 'Whitespire'	Whitespire Birch Clump	1 1/2"	B&B
BN	Juglans cinerea	Butternut	1 1/2"	B&B
NC	Catalpa speciosa	Northern Catalpa	1 1/2"	B&B
ABS	Amelanchier 'Autumn Brilliance' (tree form)	Autumn Brilliance Serviceberry	#15	CG
CBC	Malus 'Coralburst'	Coralburst Flowering Crab	#10	CG
GRC	Malus transitoria 'Schmidtcutleaf'	Golden Raindrops Flowering Crab	1 1/4"	CG
PSC	Malus 'Pink Spires'	Pink Spire Flowering Crab	#15	CG
IMC	Malus 'Indian Magic'	Indian Magic Flowering Crab	1 1/4"	B&B
ZC	Malus x 'Zumi'	Zumi Flowering Crab	1 1/4"	B&B
STC	Malus 'Sutyzam'	Sugar Tyme Flowering Crab	1 1/4"	B&B
SSC	Malus 'Spring Snow'	Spring Snow Flowering Crab	#15	CG
RSC	Malus 'Red Splendor'	Red Splendor Flowering Crab	1 1/4"	B&B
SDC	Malus 'Snowdrift'	Snowdrift Flowering Crab	1 1/4"	B&B
PPC	Malus 'Purple Prince'	Purple Prince Flowering Crab	1 1/4"	B&B
NHE	Ulmus x 'New Horizon'	New Horizon Elm	2'	B&B
HB	Celtis occidentalis	Hackberry	#25	CG
SKL	Gleditsia tricanthos 'Skycole'	Skyline Honeylocust	2"	B&B
IW	Ostrya virginiana	Ironwood	#25	CG
KC	Gymnocladus dioica	Kentucky Coffeetree	2"	B&B



### Door Creek Church Landscape Plan Plant Schedule

Symbol	Botanical Plant Name	Common Plant Name	Size	Root Condition
AGG	Gingko biloba 'Autumn Gold'	Autumn Gold Gingko	#10	CG
TCH	Crataegus crusgalli 'inermis'	Thornless Cockspur Hawthorne	#25	CG
WHT	Crataegus phaenopyrum (tree fo	Washington Hawthorne	1 1/4"	B&B
WKH	Crataegus virdis 'Winter King' (tree fo	Winter King Hawthorne	1 1/2"	B&B
HN	Corylus colurna	Turkish Hazelnut	1 1/4"	B&B
ASL	Tilia americana 'McKSentry'	American Sentry Linden	#25	CG
PD	Cornus alternifolia	Pagoda Dogwood	5'	B&B
TBB	Euonymus alatus 'Tures'	Tures Burning Bush	#5	CG
JDW	Ilex verticillata 'RS / JD'	Jim Dandy Winterberry	#3	CG
JTL	Syringa reticulata 'Ivory Silk' (tree fo	Ivory Silk Lilac	#20	CG
BL	Syringa x Penda (tree fo	Bloomerang Lilac	#10	CG
ABM	Acer x freemanii 'Jerffersred'	Autumn Blaze Maple	#25	CG
BBM	Acer rubrum 'Magnificent Magenta'	Burgundy Belle Maple	1 1/2"	B&B
FFM	Acer saccharum 'Bail'	Fall Fiesta Maple	#20	CG
SGM	Acer x freemanii 'Sienna Glen'	Sienna Glen Maple	2"	B&B
RSM	Acer rubrum 'Franksred'	Red Sunset Maple	2"	B&B
SSM	Acer miyabei 'Morton'	State Street Maple	1 1/2"	B&B
SWO	Quercus bicolor	Swamp White Oak	#15	CG
NPO	Quercus ellipsoidalis	Northern Pin Oak	1 1/2"	B&B

## Door Creek Church Landscape Plan Plant Schedule

<b>Symbol</b>	<b>Botanical Plant Name</b>	<b>Common Plant Name</b>	<b>Size</b>	<b>Root Condition</b>
QA	<i>Populus tremuloides</i>	Quaking Aspen	1 1/2"	B&B
QA2	<i>Populus tremuloides</i>	Quaking Aspen Twin	#20`	CG
QA3	<i>Populus tremuloides</i>	Quaking Aspen Clump	#20`	CG
BW	<i>Juglans nigra</i>	Black Walnut	1 1/2"	B&B
AJ	<i>Juniperus horizontalis</i> 'Compacta'	Andorra Juniper	#3	CG
GJ	<i>Juniperus virginiana</i> 'Grey Owl'	Grey Owl Juniper	#3	CG
PJ	<i>Juniper chinensis</i> 'Pftizeriana'	Pfizer Juniper	#5	CG
SJ	<i>Juniper chinensis</i> 'Sea Green'	Sea Green Juniper	#5	CG
U-AJ	<i>Juniperus chinensis</i> 'Ames'	Ames Juniper	4'	B&B
U-MJ	<i>Juniper chinensis</i> 'Mountbatten'	Mountbatten Juniper	4'	B&B
U-SJ	<i>Juniperus</i> 'Select'	Star Power Juniper	6'	B&B
U-TJ	<i>Juniperus virginiana</i> 'Taylor'	Taylor Juniper	5'	B&B
FP	<i>Pinus nigra</i> 'Compacta'	Frank Austrian Pine	#10	CG
SP	<i>Pinus sylvestris</i>	Scots Pine	5'	B&B
VP	<i>Pinus flexilis</i>	Vanderwolf's Pyramid Pine	#10	CG
BHS	<i>Picea glauca densata</i>	Black Hills Spruce	4'	B&B
CGS	<i>Picea pungens</i>	Colorado Green Spruce	4'	B&B

Address: 6022 DOMINION DR.

**FOR PARKING LOTS WITH GREATER THAN 20 STALLS, LANDSCAPE PLANS MUST BE STAMPED BY A REGISTERED LANDSCAPE ARCHITECT**

**I. Number of Trees Required**

The number of trees required for a parking lot is based on the number of parking stalls. Using the Schedule for Required Trees on the reverse side of this worksheet, determine the number of trees required. (Example: One tree is required for 10 parking stalls).

Landscape requirements for storage areas are determined by dividing the total square footage of the storage area by (300) square feet. This converts area to stalls.

[Example: 10,000 square feet is equivalent to (33) stalls or (3) trees and (160) points].

Number of Parking Stalls \_\_\_\_\_ 150

Total Square Footage of the Storage Area \_\_\_\_\_  
Divided by Three Hundred (300) Square Feet - 0 -

Number of Canopy Shade Trees Required (2" - 2 1/2" Caliper) \_\_\_\_\_  
(See Schedule on reverse side) TOTAL 15

**II. Number of Landscape Points Required**

The number of points required is also based on the number of parking stalls. Using the Point Schedule for Landscape Elements on the reverse side of this worksheet, determine the number of points required. (Example: 49.5 points are required for 10 stalls). A point fraction of (.5) or less may be disregarded, while a fraction in excess of (.5) must be counted as one point. Thus: 49.5 points would be rounded down to 49.0 points required.

The number of points required for loading areas is (75) points for each loading berth. \_\_\_\_\_  
(See Schedule on reverse side) - 0 -

Number of Points Required (See Schedule on reverse side) \_\_\_\_\_ TOTAL 652

**Tabulation of Points and Credits**

Indicate below the quantity and points for all pertinent landscape elements. Also, credit information for boundary screening and any existing elements to be retained.

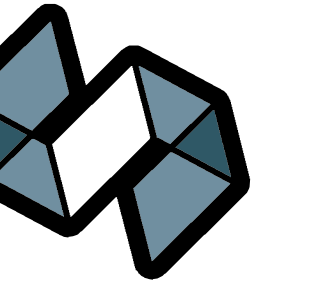
ELEMENT	POINT VALUE	QUANTITY	POINTS ACHIEVED	CREDITS	
				QUANTITY	POINTS
Canopy Tree: 2" - 2 1/2"	35	37	1295		
Deciduous Shrub	2				
Evergreen Shrub	3				
Decorative Wall or Fence (per 10 L.F.)	5				
Earth Berm (per 10 L.F.)					
Avg. Height 30"	5				
Avg. Height 15"	2				
Evergreen Trees 3' height minimum	15				
Canopy Tree or Small Tree 1 1/2" - 2" Caliper (i.e., Crab, Hawthorn)	15	36	540		
<b>Sub Totals</b>			1835	+	

**TOTAL**  
= 1835

\*Trees required in Part I above, are not to be included in the point count.

Total No. of Points Provided (Equal to or greater than points required)





**STRANG**

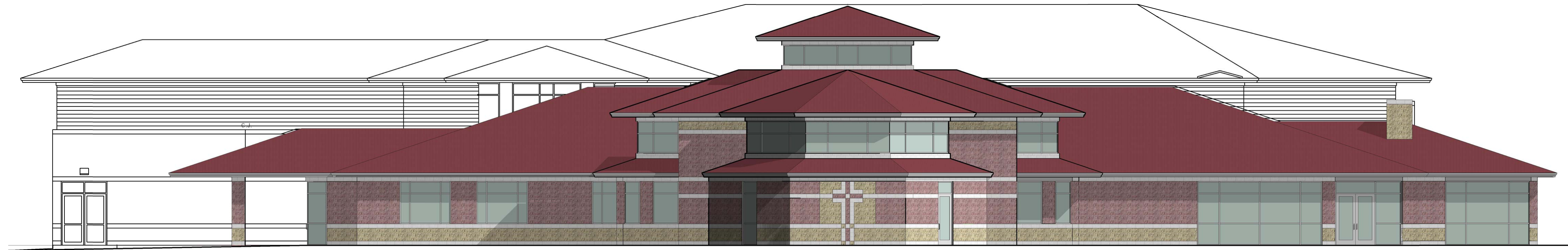
ARCHITECTURE  
ENGINEERING  
INTERIOR DESIGN

STRANG, INC.  
6411 MINERAL POINT ROAD  
MADISON, WI 53705-4395

**DOOR CREEK CHURCH**  
4/3/2013

**KEY**

-  SMOOTH FACE CMU COLOR 1
-  SPLIT FACE COLOR 2
-  SPLIT FACE COLOR 3
-  ASPHALT SHINGLES
-  WINDOWS: CLEAR ANODIZED  
STOREFRONT WITH GREY  
TINTED GLASS



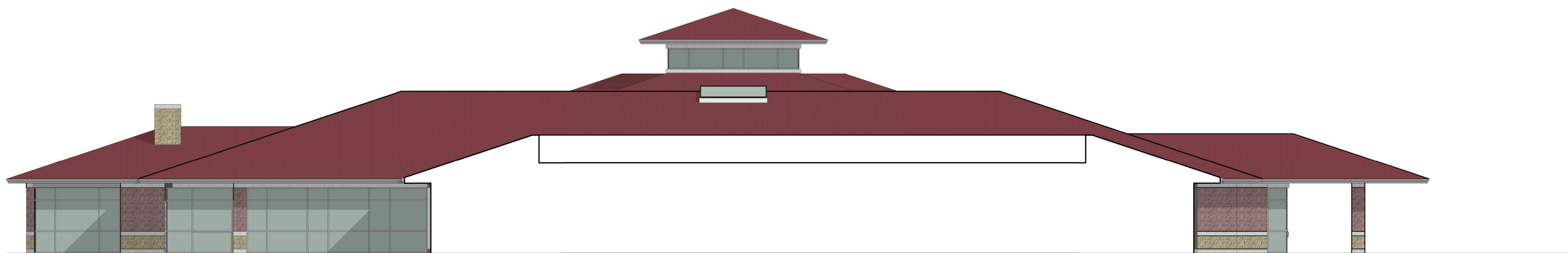
**NORTH ELEVATION**  
A402 SCALE: 1/8" = 1'-0"



EXISTING NORTHVIEW

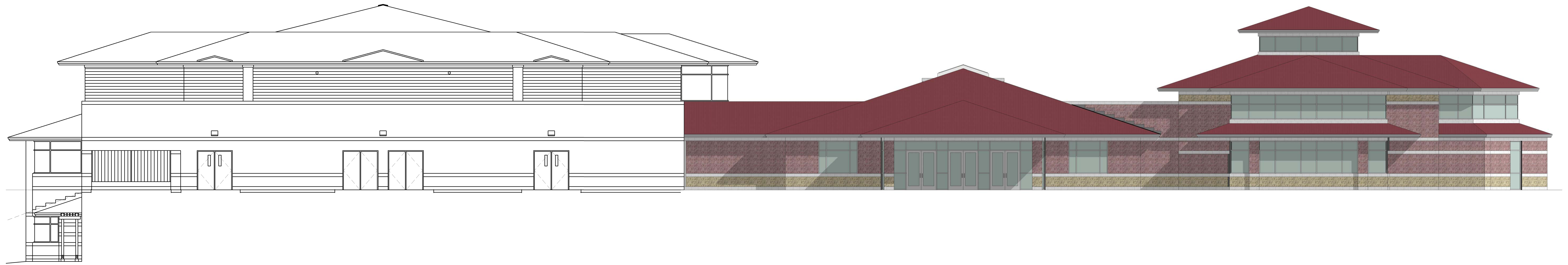


EXISTING SOUTHWEST VIEW

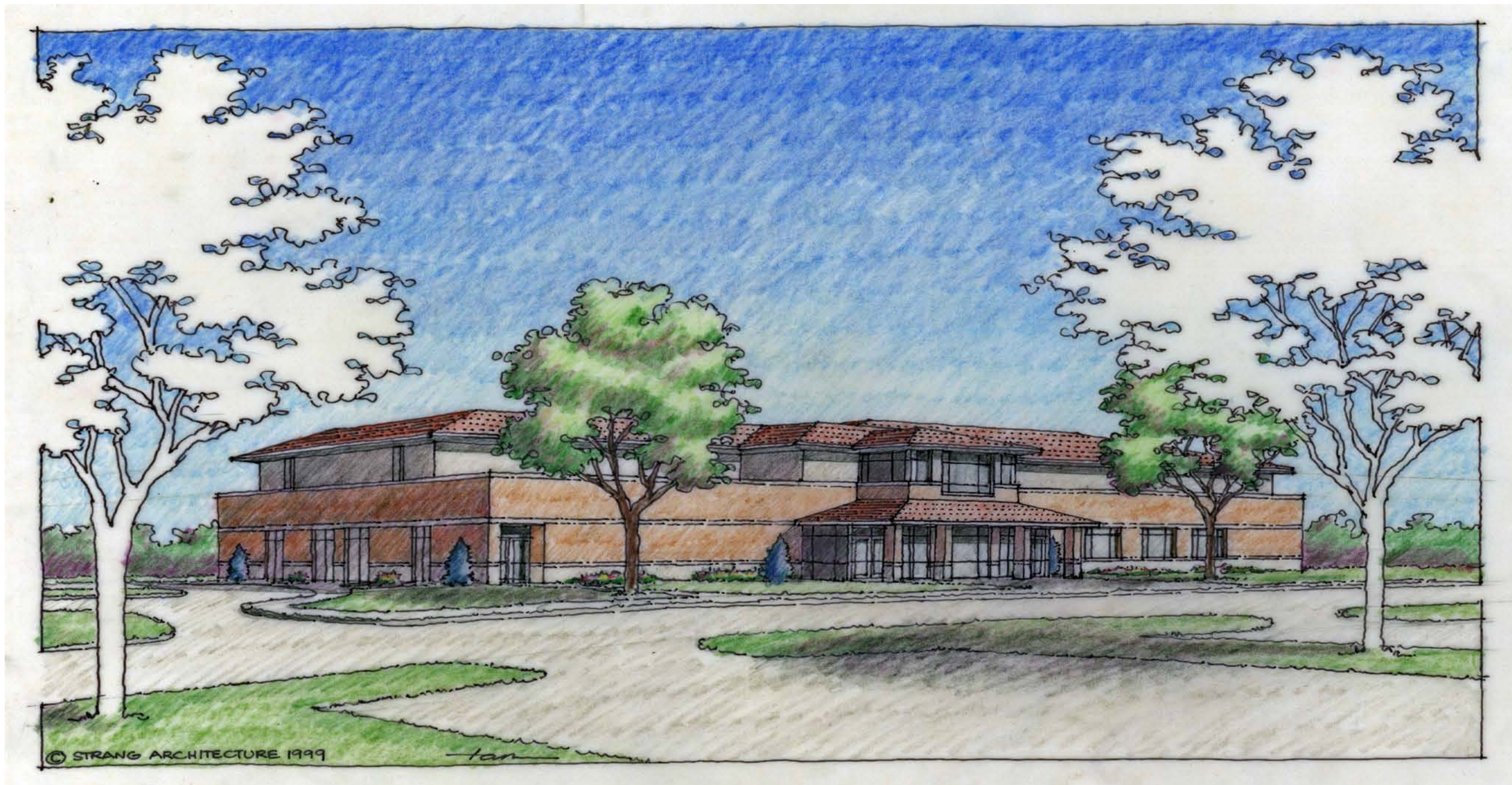


**SOUTH ELEVATION**  
A402 SCALE: 1/8" = 1'-0"





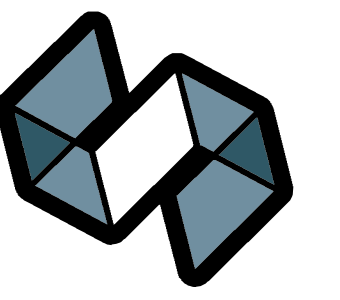
PN TN 1  
A401A  
**EAST ELEVATION**  
SCALE: 1/8" = 1'-0"



EXISTING NORTHEAST VIEW



EXISTING WEST VIEW



**STRANG**

ARCHITECTURE  
ENGINEERING  
INTERIOR DESIGN

STRANG, INC.  
6411 MINERAL POINT ROAD  
MADISON, WI 53705-4395

**DOOR CREEK CHURCH**  
4/3/2013

**KEY**

- SMOOTH FACE CMU COLOR 1
- SPLIT FACE COLOR 2
- SPLIT FACE COLOR 3
- ASPHALT SHINGLES
- WINDOWS: CLEAR ANODIZED STOREFRONT WITH GREY TINTED GLASS



PN TN 2  
A401A  
**WEST ELEVATION FOR**  
SCALE: 1/8" = 1'-0"