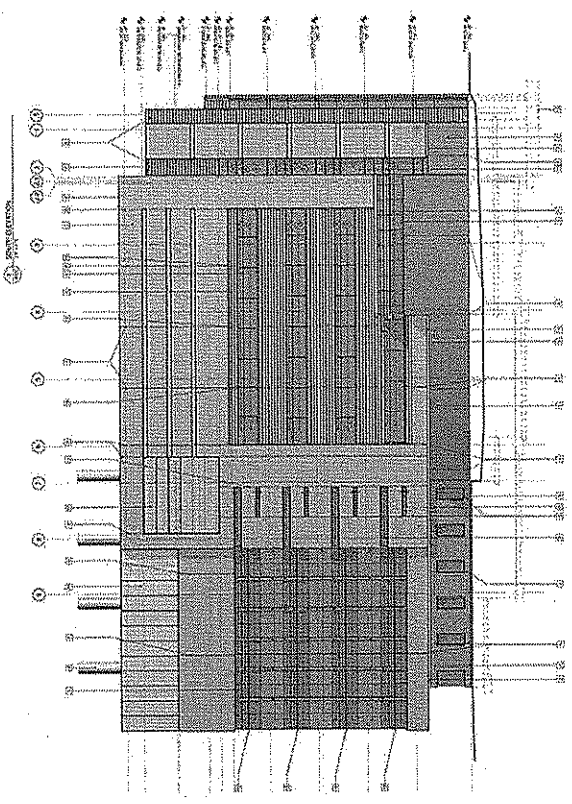
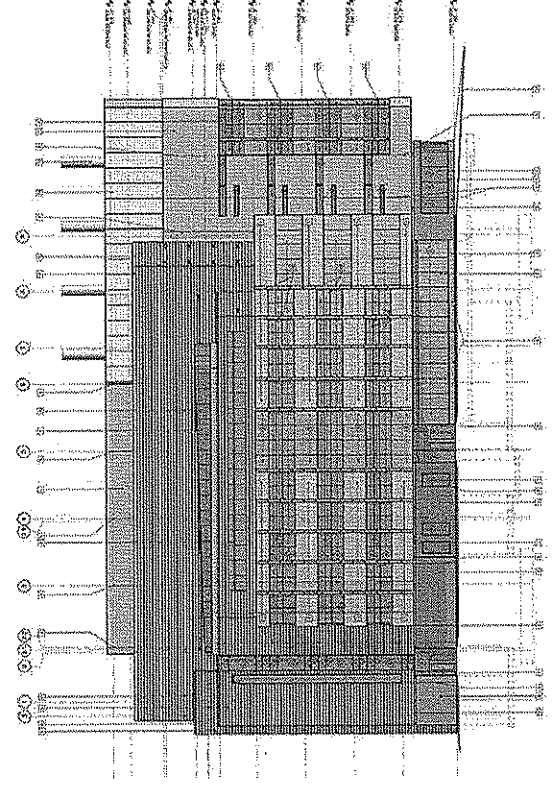
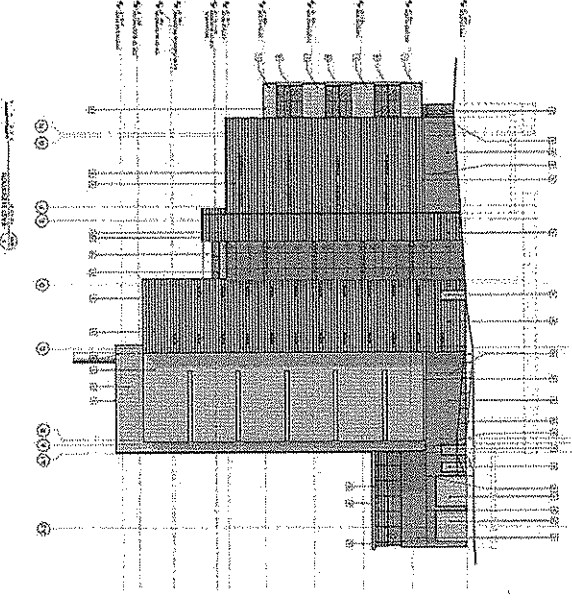
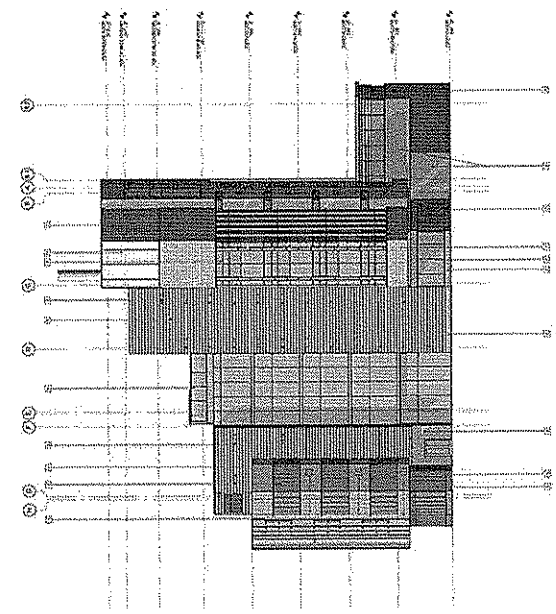


**ELEVATION KEY PLAN**  
1 2 3 4 5 6

- FINISHES AND MATERIALS**
- 1 POLYURETHANE ENAMEL
  - 2 POLYURETHANE ENAMEL
  - 3 POLYURETHANE ENAMEL
  - 4 POLYURETHANE ENAMEL
  - 5 POLYURETHANE ENAMEL
  - 6 POLYURETHANE ENAMEL

- ELECTRICAL**
- 1 ANCHOR BOLTS
  - 2 ANCHOR BOLTS
  - 3 ANCHOR BOLTS
  - 4 ANCHOR BOLTS
  - 5 ANCHOR BOLTS
  - 6 ANCHOR BOLTS
  - 7 ANCHOR BOLTS
  - 8 ANCHOR BOLTS
  - 9 ANCHOR BOLTS
  - 10 ANCHOR BOLTS
  - 11 ANCHOR BOLTS
  - 12 ANCHOR BOLTS
  - 13 ANCHOR BOLTS
  - 14 ANCHOR BOLTS
  - 15 ANCHOR BOLTS
  - 16 ANCHOR BOLTS
  - 17 ANCHOR BOLTS
  - 18 ANCHOR BOLTS
  - 19 ANCHOR BOLTS
  - 20 ANCHOR BOLTS
  - 21 ANCHOR BOLTS
  - 22 ANCHOR BOLTS
  - 23 ANCHOR BOLTS
  - 24 ANCHOR BOLTS
  - 25 ANCHOR BOLTS
  - 26 ANCHOR BOLTS
  - 27 ANCHOR BOLTS
  - 28 ANCHOR BOLTS
  - 29 ANCHOR BOLTS
  - 30 ANCHOR BOLTS
  - 31 ANCHOR BOLTS
  - 32 ANCHOR BOLTS
  - 33 ANCHOR BOLTS
  - 34 ANCHOR BOLTS
  - 35 ANCHOR BOLTS
  - 36 ANCHOR BOLTS
  - 37 ANCHOR BOLTS
  - 38 ANCHOR BOLTS
  - 39 ANCHOR BOLTS
  - 40 ANCHOR BOLTS
  - 41 ANCHOR BOLTS
  - 42 ANCHOR BOLTS
  - 43 ANCHOR BOLTS
  - 44 ANCHOR BOLTS
  - 45 ANCHOR BOLTS
  - 46 ANCHOR BOLTS
  - 47 ANCHOR BOLTS
  - 48 ANCHOR BOLTS
  - 49 ANCHOR BOLTS
  - 50 ANCHOR BOLTS
  - 51 ANCHOR BOLTS
  - 52 ANCHOR BOLTS
  - 53 ANCHOR BOLTS
  - 54 ANCHOR BOLTS
  - 55 ANCHOR BOLTS
  - 56 ANCHOR BOLTS
  - 57 ANCHOR BOLTS
  - 58 ANCHOR BOLTS
  - 59 ANCHOR BOLTS
  - 60 ANCHOR BOLTS
  - 61 ANCHOR BOLTS
  - 62 ANCHOR BOLTS
  - 63 ANCHOR BOLTS
  - 64 ANCHOR BOLTS
  - 65 ANCHOR BOLTS
  - 66 ANCHOR BOLTS
  - 67 ANCHOR BOLTS
  - 68 ANCHOR BOLTS
  - 69 ANCHOR BOLTS
  - 70 ANCHOR BOLTS
  - 71 ANCHOR BOLTS
  - 72 ANCHOR BOLTS
  - 73 ANCHOR BOLTS
  - 74 ANCHOR BOLTS
  - 75 ANCHOR BOLTS
  - 76 ANCHOR BOLTS
  - 77 ANCHOR BOLTS
  - 78 ANCHOR BOLTS
  - 79 ANCHOR BOLTS
  - 80 ANCHOR BOLTS
  - 81 ANCHOR BOLTS
  - 82 ANCHOR BOLTS
  - 83 ANCHOR BOLTS
  - 84 ANCHOR BOLTS
  - 85 ANCHOR BOLTS
  - 86 ANCHOR BOLTS
  - 87 ANCHOR BOLTS
  - 88 ANCHOR BOLTS
  - 89 ANCHOR BOLTS
  - 90 ANCHOR BOLTS
  - 91 ANCHOR BOLTS
  - 92 ANCHOR BOLTS
  - 93 ANCHOR BOLTS
  - 94 ANCHOR BOLTS
  - 95 ANCHOR BOLTS
  - 96 ANCHOR BOLTS
  - 97 ANCHOR BOLTS
  - 98 ANCHOR BOLTS
  - 99 ANCHOR BOLTS
  - 100 ANCHOR BOLTS

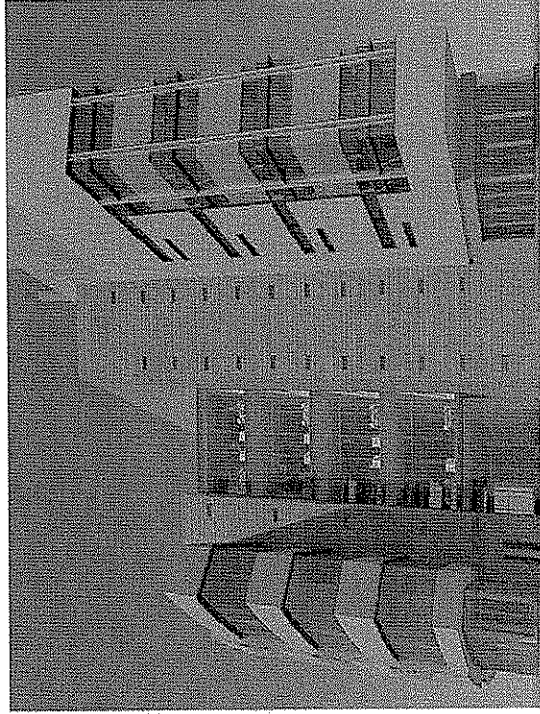
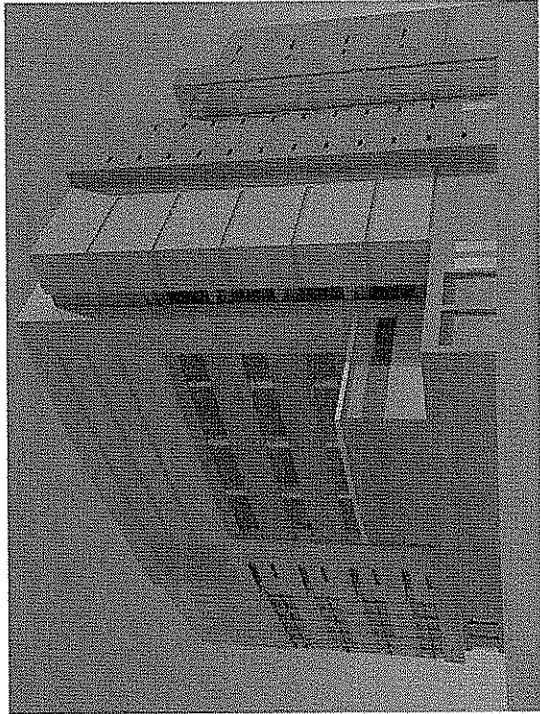
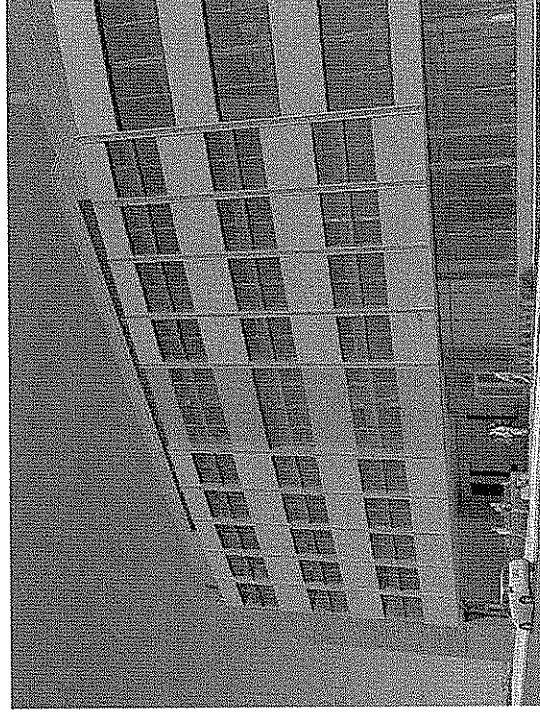
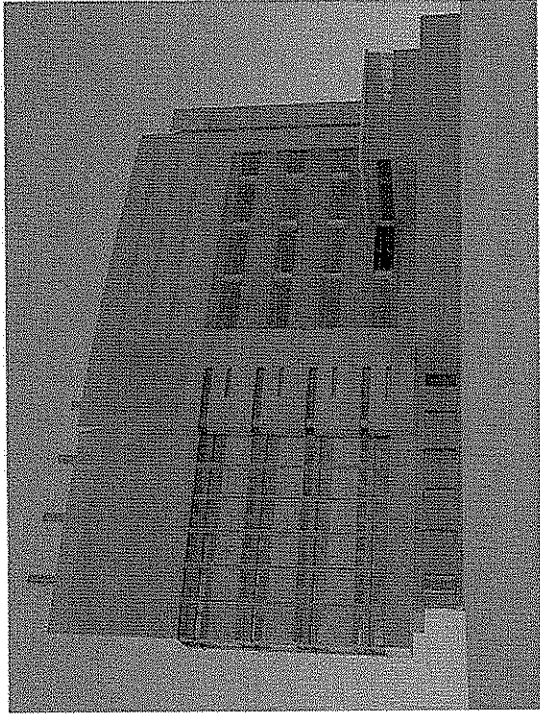


**REVISED**  
**- PROVIDED**  
**8/19/2010**

**Potter Lawson**  
Success by Design

**Wisconsin Energy Institute**

University of Wisconsin - Madison  
August 18, 2010



# Wisconsin Energy Institute

University of Wisconsin - Madison

August 18, 2010

Potter Lawson  
Success by Design



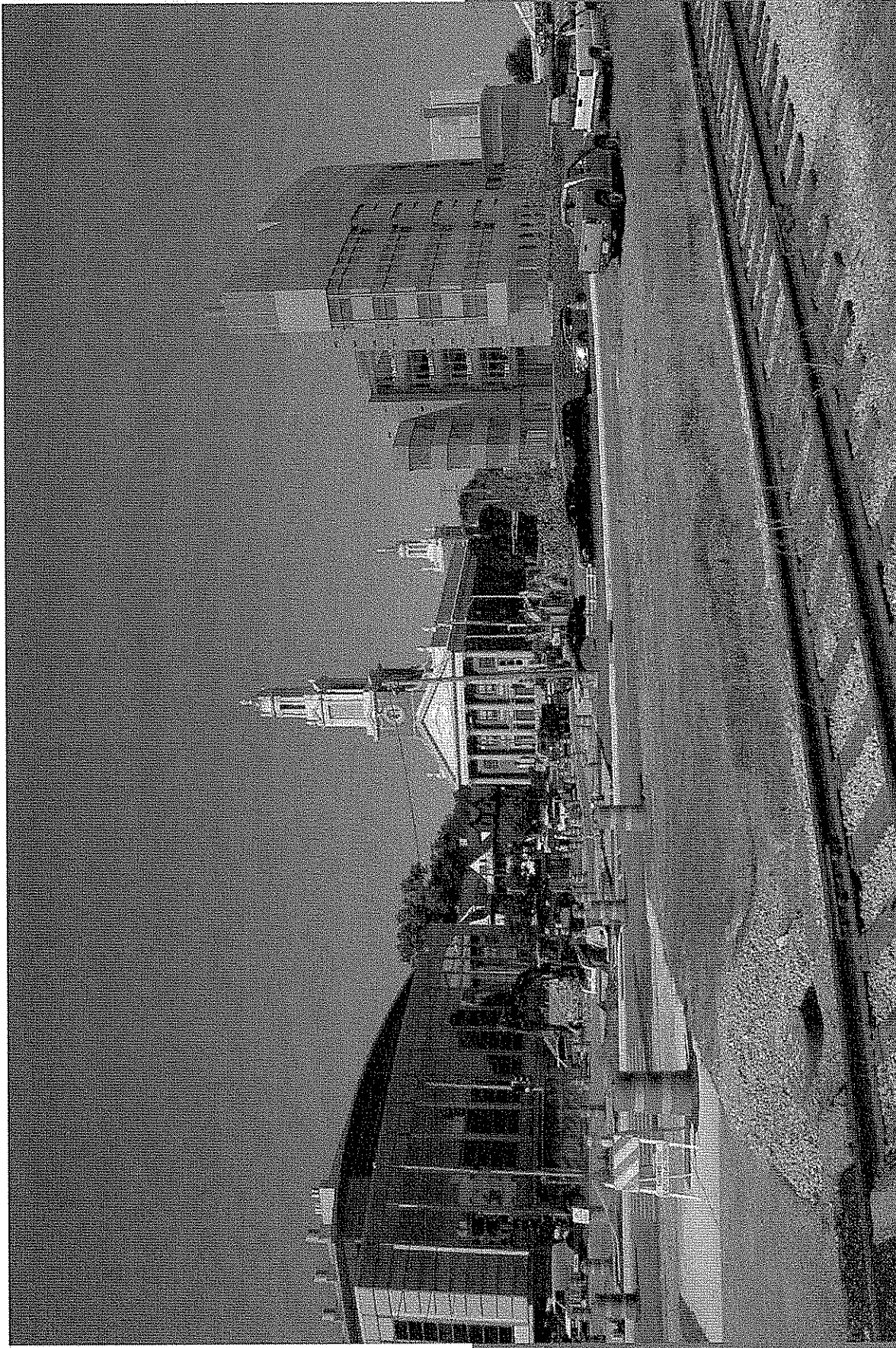


# Wisconsin Energy Institute

University of Wisconsin - Madison

August 18, 2010

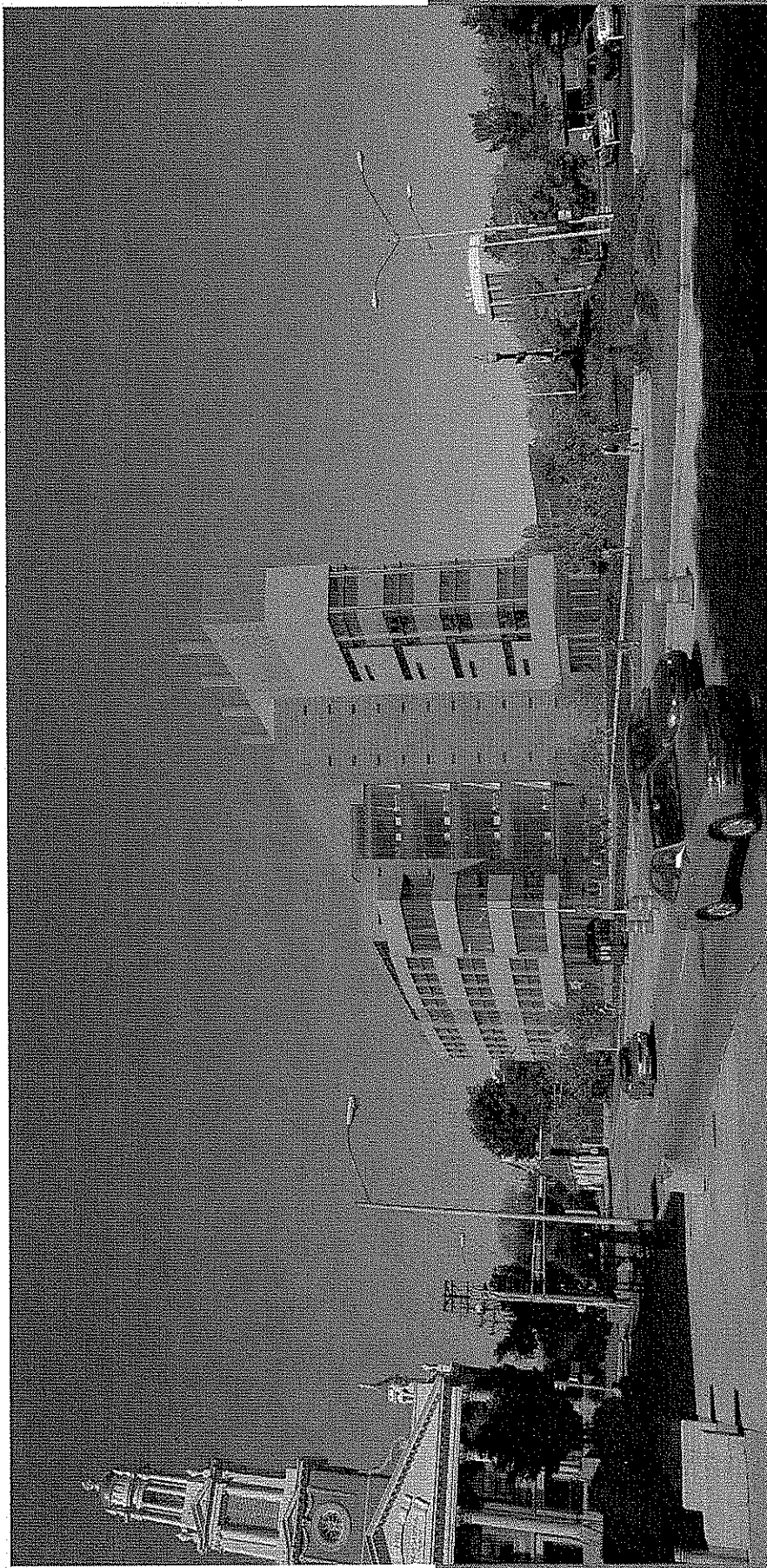
Potter Lawson  
Success by Design



# Wisconsin Energy Institute

University of Wisconsin - Madison  
August 18, 2010

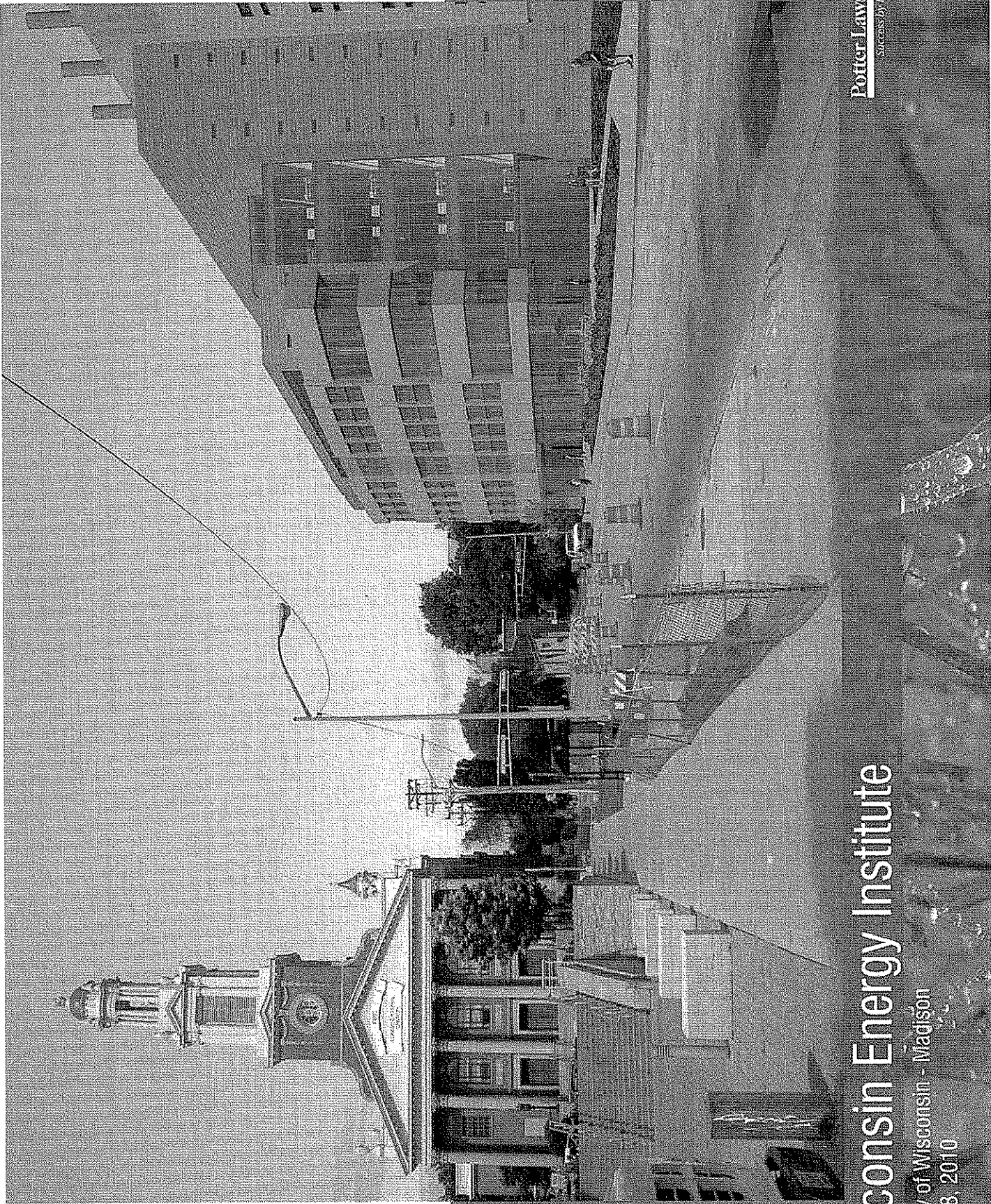
Potter Lawson  
Success by Design



# Wisconsin Energy Institute

University of Wisconsin - Madison  
August 18, 2010

Potter Lawson  
Success by Design

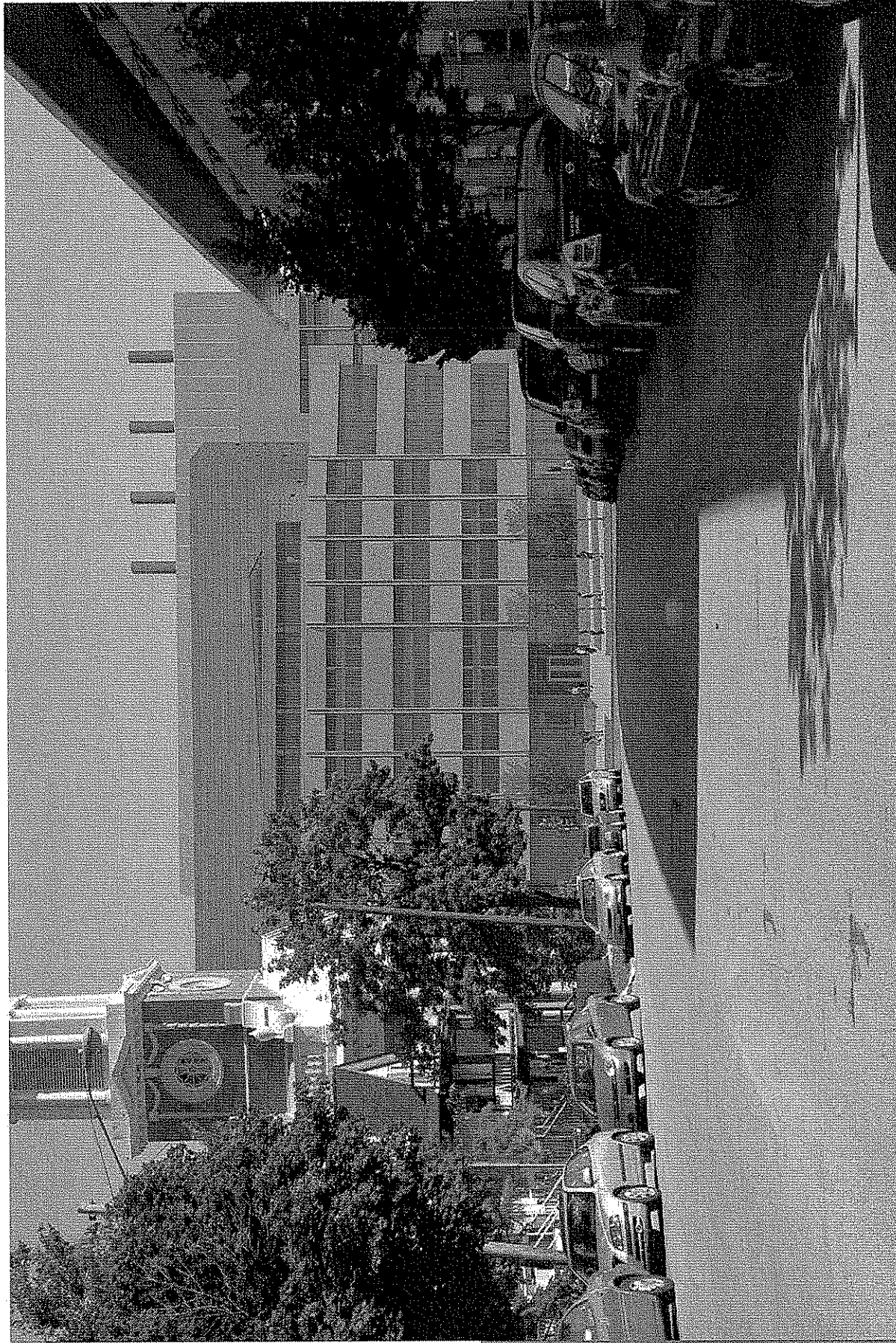


# Wisconsin Energy Institute

University of Wisconsin - Madison

August 18, 2010

Potter Lawson LLP  
SUCCESS BY DESIGN



# Wisconsin Energy Institute

University of Wisconsin - Madison  
August 18, 2010

Potter Lawson  
SUCCESS BY DESIGN

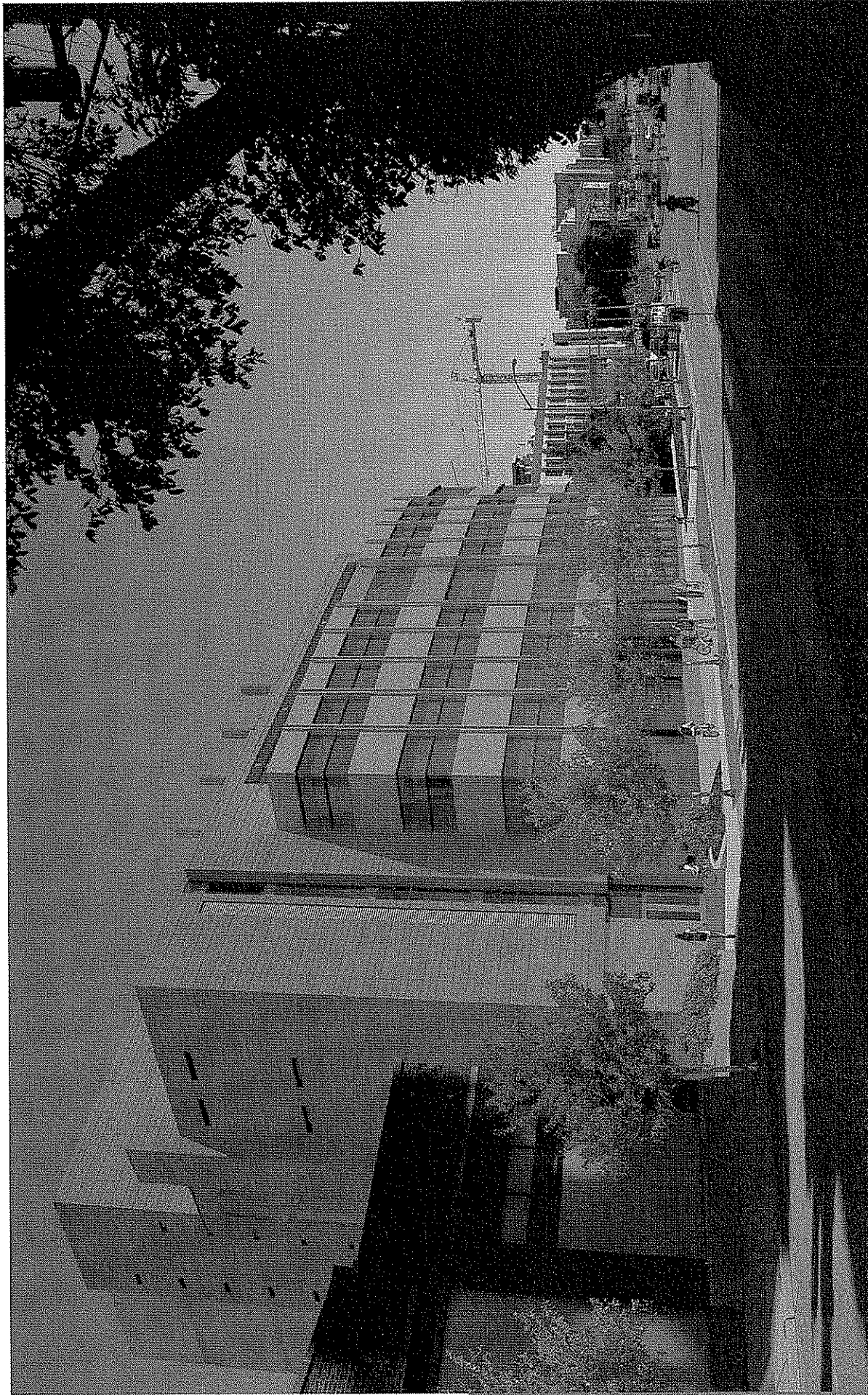


# Wisconsin Energy Institute

University of Wisconsin - Madison  
August 18, 2010

Potter Lawson  
*Successfully Design*





# Wisconsin Energy Institute

University of Wisconsin - Madison  
August 18, 2010

Potter Lawson  
Success by Design

184



Glass blade sign with integral letters.



Street number "1552" above entry door.

# Wisconsin Energy Institute

University of Wisconsin - Madison

August 18, 2010

# Wisconsin Energy Institute

University of Wisconsin - Madison

August 18, 2010



# Wisconsin Energy Institute

University of Wisconsin - Madison  
August 18, 2010

Potter Lawson  
Success by Design





# Wisconsin Energy Institute

University of Wisconsin - Madison  
August 18, 2010

Potter Lawson  
Success by Design