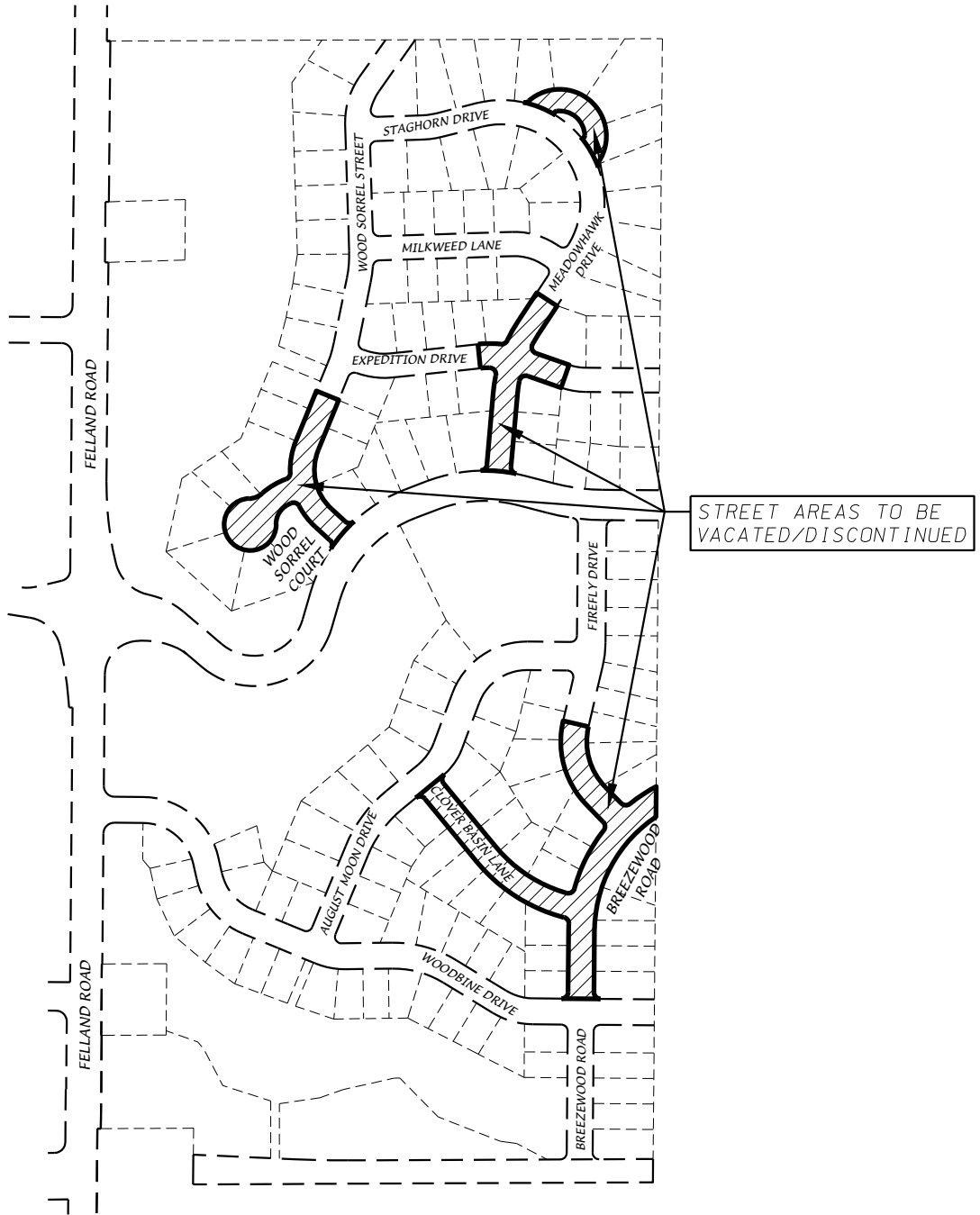


EXHIBIT "A"
PUBLIC RIGHT-OF-WAYS TO BE VACATED AND DISCONTINUED
VILLAGE AT AUTUMN LAKE REPLAT



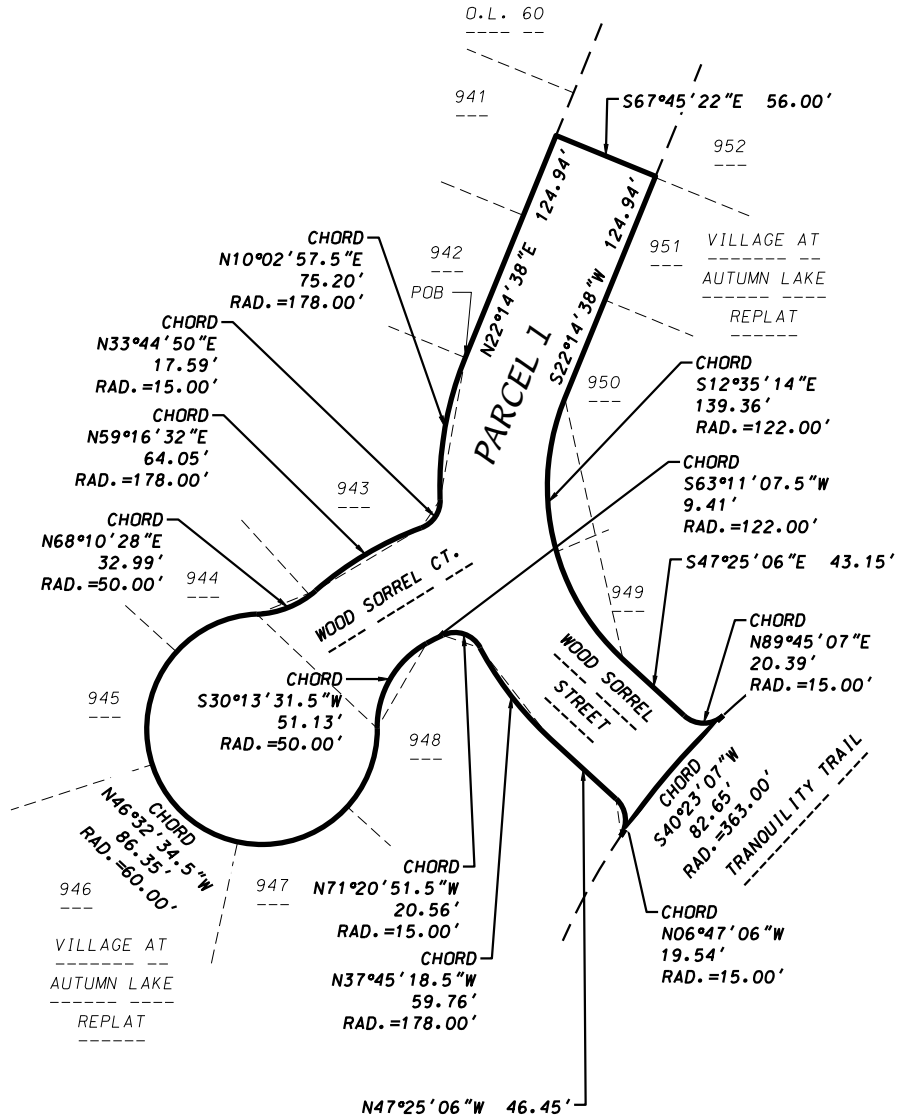
D'ONOFRIO KOTTKE AND ASSOCIATES, INC.
7530 Westward Way, Madison, WI 53717
Phone: 608.833.7530 • Fax: 608.833.1089
YOUR NATURAL RESOURCE FOR LAND DEVELOPMENT



0 400
Scale 1" = 400'

SHEET 1 OF 5
DATE: 1-3-24
F.N.: 23-07-111

EXHIBIT "A"
PUBLIC RIGHT-OF-WAYS TO BE VACATED AND DISCONTINUED
VILLAGE AT AUTUMN LAKE REPLAT



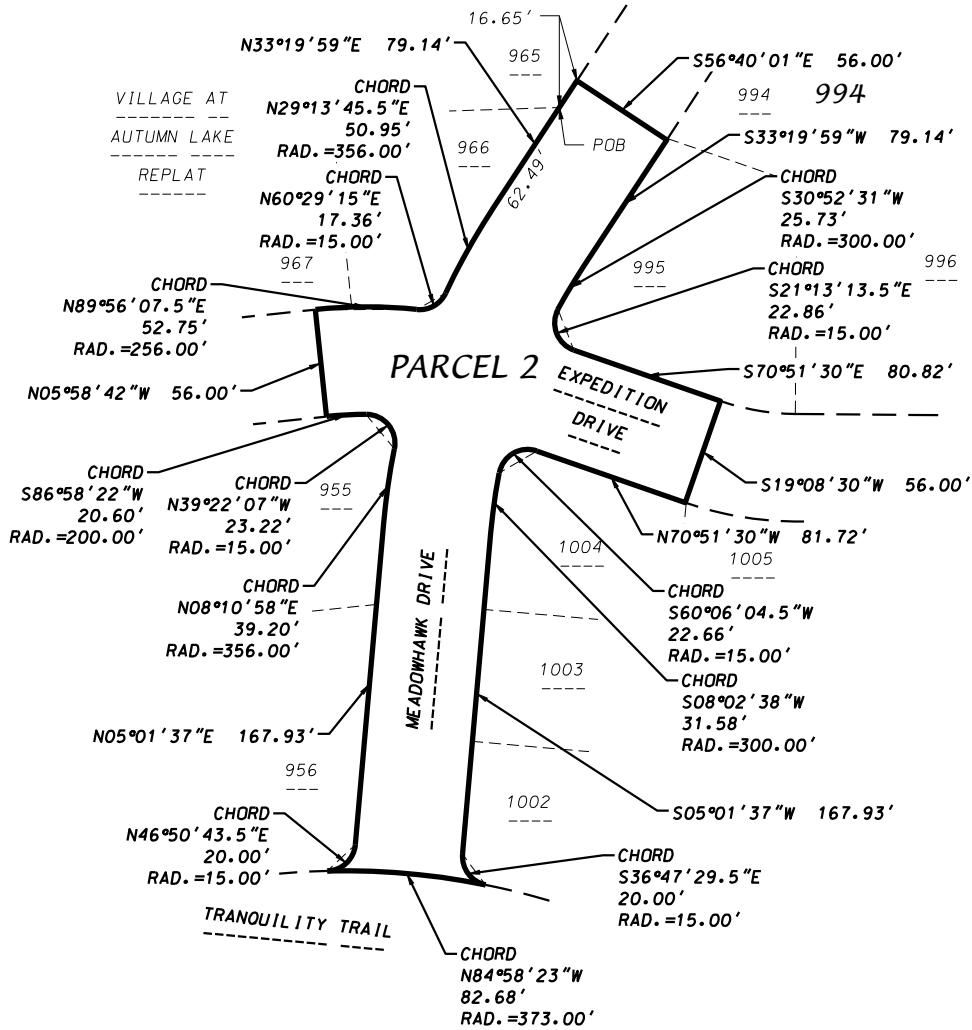
D'ONOFRIO KOTTKE AND ASSOCIATES, INC.
 7530 Westward Way, Madison, WI 53717
 Phone: 608.833.7530 • Fax: 608.833.1089
 YOUR NATURAL RESOURCE FOR LAND DEVELOPMENT



0 100
 Scale 1" = 100'

SHEET 2 OF 5
 DATE: 1-3-24
 F.N.: 23-07-111

EXHIBIT "A"
PUBLIC RIGHT-OF-WAYS TO BE VACATED AND DISCONTINUED
VILLAGE AT AUTUMN LAKE REPLAT



D'ONOFRIO KOTTKE AND ASSOCIATES, INC.

7530 Westward Way, Madison, WI 53717
 Phone: 608.833.7530 • Fax: 608.833.1089
 YOUR NATURAL RESOURCE FOR LAND DEVELOPMENT



0 100
 Scale 1" = 100'

SHEET 3 OF 5

DATE: 1-3-24

F.N.: 23-07-111

