

PROJECT ID: 5992-09-26  
WITH: 0000-00-00

STATE OF WISCONSIN  
DEPARTMENT OF TRANSPORTATION  
PLAN OF PROPOSED IMPROVEMENT

STATE PROJECT	FEDERAL PROJECT	
	PROJECT	CONTRACT
5992-09-26		

ORDER OF SHEETS

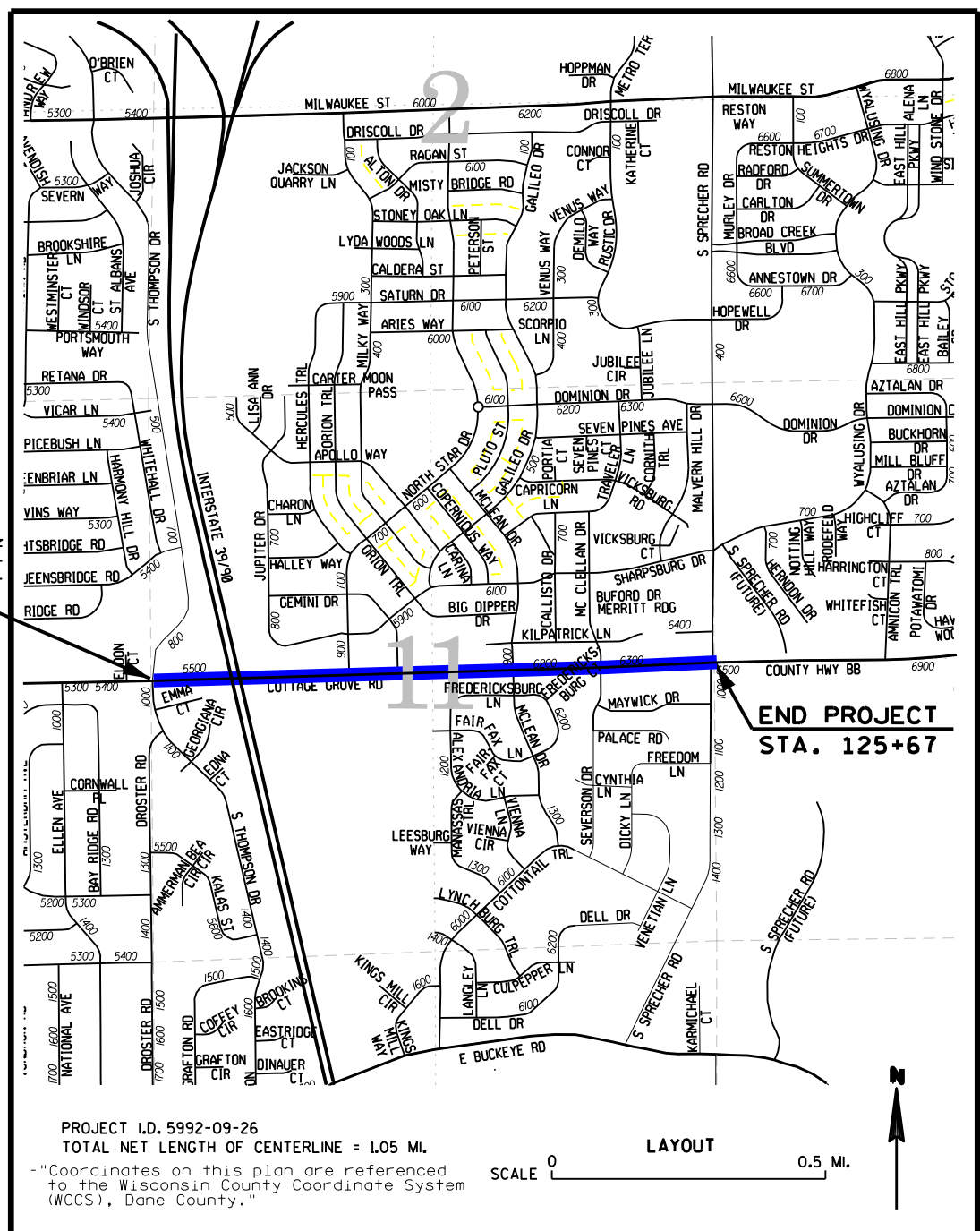
- Section No. 1 Title
- Section No. 2 Typical Sections and Details (Includes Erosion Control)
- Section No. 3 Estimate of Quantities
- Section No. 3 Miscellaneous Quantities
- Section No. 4 Right of Way Plat
- Section No. 5 Plan and Profile
- Section No. 6 Standard Detail Drawings
- Section No. 7 Sign Plates
- Section No. 8 Structure Plans
- Section No. 9 Computer Earthwork Data
- Section No. 9 Cross Sections

CITY OF MADISON, COTTAGE GROVE ROAD  
(SOUTH THOMPSON DRIVE TO SOUTH SPRECHER ROAD)  
CTH BB  
DANE COUNTY

R-10-E



STATE PROJECT NUMBER	5992-09-26
ROADWAY	
STATE PROJECT NUMBER	5992-09-XX
LOCAL UTILITIES (WATER MAIN)	



DESIGN DESIGNATION  
COTTAGE GROVE RD

A.A.D.T. (2018)	=	15,100
A.A.D.T. (2038)	=	19,900
D.H.V. (2038)	=	1,990
D.D.	=	90/10
T.	=	8.5%
DESIGN SPEED	=	40 MPH
ESALS	=	2,934,600

BEGIN PROJECT  
STA. 70+07

END PROJECT  
STA. 125+67

CONVENTIONAL SYMBOLS

PLAN	PROFILE
CORPORATE LIMITS	GRADE LINE
PROPERTY LINE	ORIGINAL GROUND
LOT LINE	MARSH OR ROCK PROFILE (To be noted as such)
LIMITED HIGHWAY EASEMENT	SPECIAL DITCH
EXISTING RIGHT OF WAY	GRADE ELEVATION
PROPOSED OR NEW R/W LINE	CULVERT (Profile View)
SLOPE INTERCEPT	UTILITIES
REFERENCE LINE	ELECTRIC
EXISTING CULVERT	FIBER OPTIC
PROPOSED CULVERT (Box or Pipe)	GAS
COMBUSTIBLE FLUIDS	SANITARY SEWER
MARSH AREA	STORM SEWER
WOODED OR SHRUB AREA	TELEPHONE
	WATER
	UTILITY PEDESTAL
	POWER POLE
	TELEPHONE POLE

SANITARY SEWER  
DESIGNED BY: CITY OF MADISON

ACCEPTED FOR  
CITY of MADISON  
(Date) (City Engineer)

ORIGINAL PLANS PREPARED BY:  
CITY OF MADISON  
ENGINEERING DIVISION

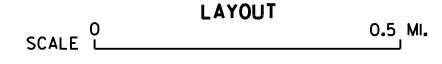
WATERMAIN  
DESIGNED BY: CITY OF MADISON

STATE OF WISCONSIN  
DEPARTMENT OF TRANSPORTATION  
PREPARED BY: SNYDER & ASSOCIATES  
Designer: CITY OF MADISON  
MANAGEMENT CONSULTANT: K.JOHNSON ENGINEERS, INC.  
C.O. Examiner

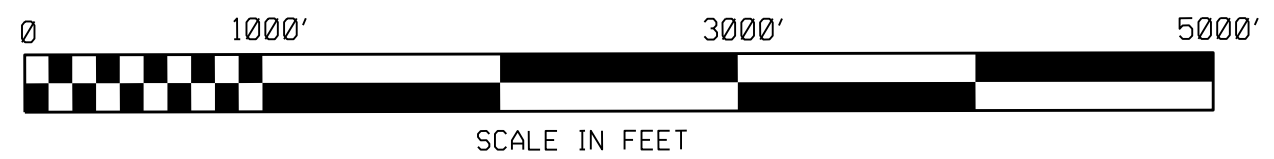
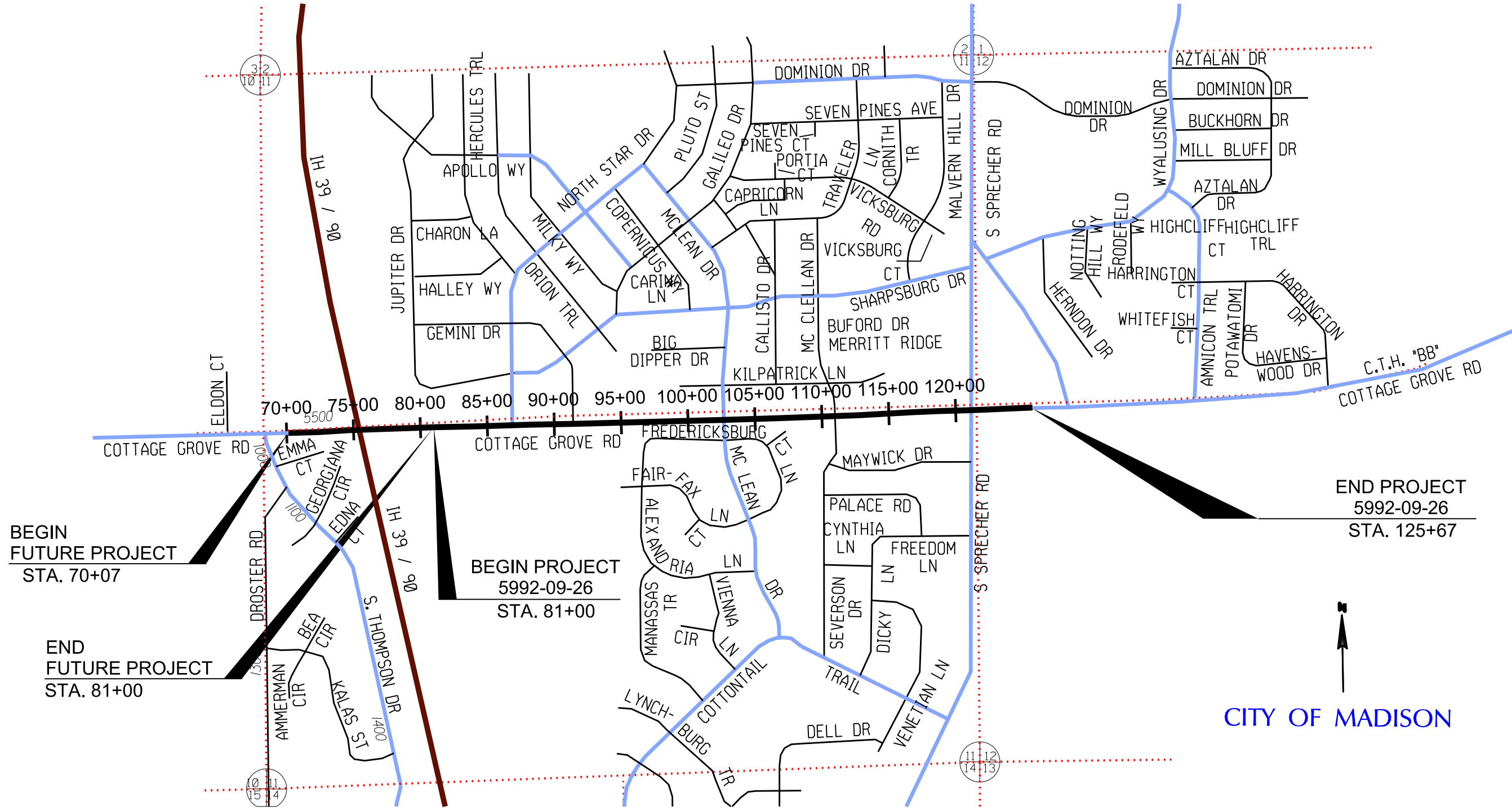
STREET LIGHTING/TRAFFIC SIGNALS  
DESIGNED BY: CITY OF MADISON

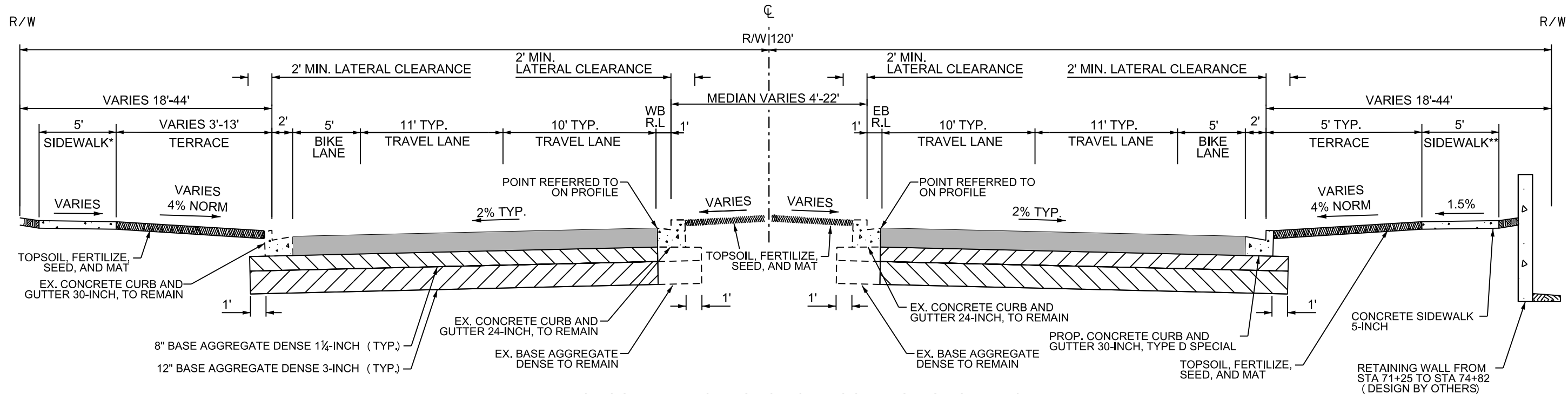
APPROVED FOR THE DEPARTMENT  
DATE: (Signature)

PROJECT I.D. 5992-09-26  
TOTAL NET LENGTH OF CENTERLINE = 1.05 MI.  
Coordinates on this plan are referenced to the Wisconsin County Coordinate System (WCCS), Dane County.



COUNTY: DANE



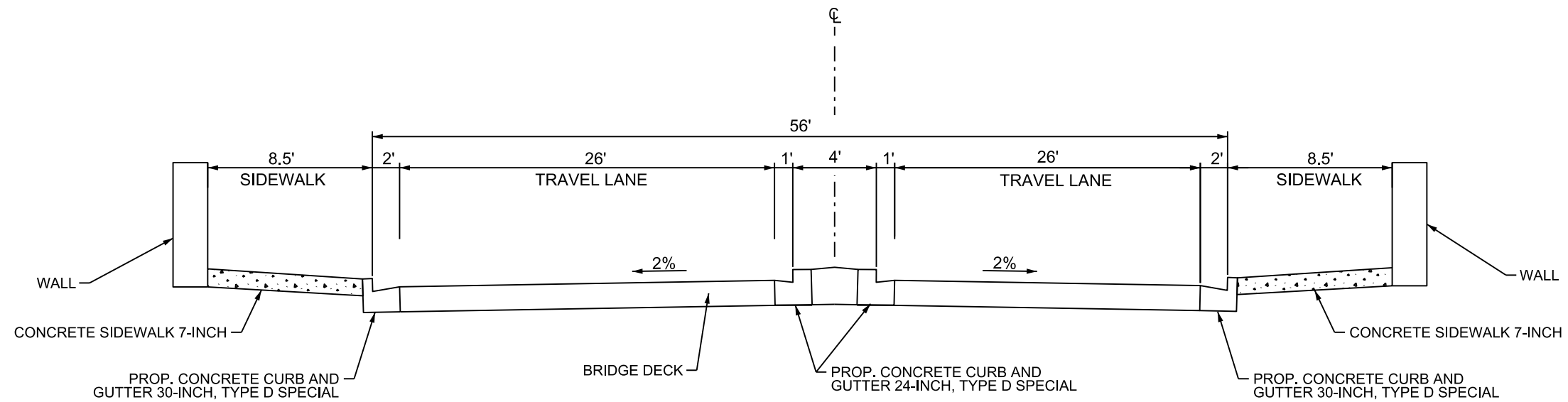


**PROPOSED TYPICAL SECTION - COTTAGE GROVE ROAD**

WB STA 01+89 TO STA 04+25  
EB STA 70+07 TO STA 74+82  
(WEST TERMINUS TO OVERPASS)

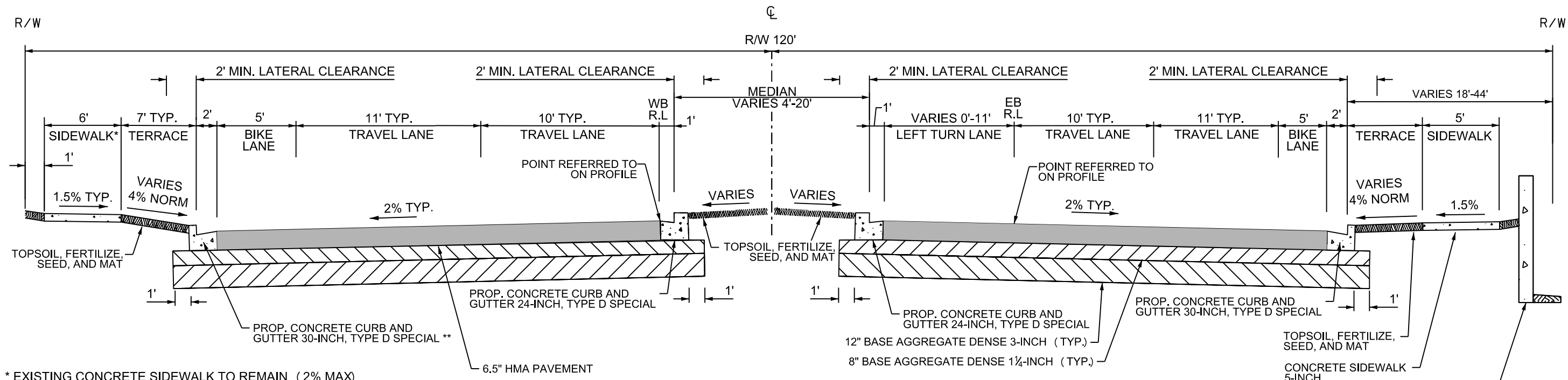
\* EXISTING CONCRETE SIDEWALK TO REMAIN (2% MAX)  
OR NEW CONCRETE SIDEWALK 5-INCH (1.5% TYP.)  
OVER 2" BASE AGGREGATE DENSE 3/4 INCH

\*\* INSTALL 3" BASE AGGREGATE DENSE 3/4" WHEN  
LONGITUDINAL GRADES EXCEED 5% (STA 69+00 TO STA 74+25)



**PROPOSED TYPICAL SECTION - COTTAGE GROVE ROAD**

WB STA 04+25 TO STA 07+61  
EB STA 74+82 TO STA 78+18  
(INTERSTATE 39/90 OVERPASS)  
(BRIDGE DESIGN BY OTHERS)



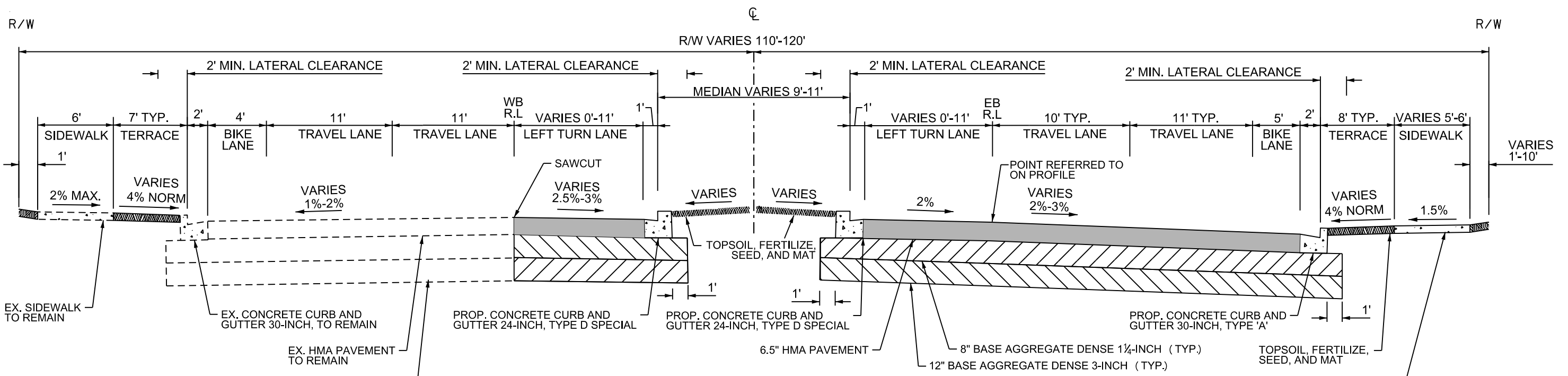
\* EXISTING CONCRETE SIDEWALK TO REMAIN (2% MAX) OR NEW CONCRETE SIDEWALK 5-INCH (1.5% TYP.) OVER 2" BASE AGGREGATE DENSE 3/4 INCH

\*\* EX. CURB AND GUTTER TO REMAIN STA 11+80 TO STA 16+43

**PROPOSED TYPICAL SECTION - COTTAGE GROVE ROAD**

WB STA 07+61 TO STA 16+43  
EB STA 78+18 TO STA 87+00  
(OVERPASS TO NORTHSTAR DR)

RETAINING WALL FROM STA 78+18 TO STA 80+50 (DESIGN BY OTHERS)



EX. SIDEWALK TO REMAIN

EX. CONCRETE CURB AND GUTTER 30-INCH, TO REMAIN

EX. HMA PAVEMENT TO REMAIN

EX. BASE AGGREGATE DENSE TO REMAIN

**PROPOSED TYPICAL SECTION - COTTAGE GROVE ROAD**

WB STA 16+43 TO STA 21+00  
EB STA 87+00 TO STA 91+56  
(NORTHSTAR DR TO GEMINI DR)



S THOMPSON DR

INTERSTATE 39 / 90

MATCH LINE

STA 75+00

0710-112-0099-7  
CITY OF MADISON POLICE  
EAST DISTRICT STATION  
809 S Thompson Dr

SLOPE INTERCEPT (TYP)

5C REPLACE  
EX. WALK

EXISTING SIDEWALK TO REMAIN

BEGIN CONSTRUCTION  
STA 1+89  
SAWCUT REQUIRED  
MATCH EXISTING

30D

26'

COTTAGE GROVE RD WB R/L

REMOVE CONCRETE  
MEDIAN NOSE

11'

10'

BEGIN PROJECT  
STA 70+07  
SAWCUT REQUIRED  
MATCH EXISTING

COTTAGE GROVE RD EB R/L

26'

COTTAGE GROVE RD EB R/L  
REMOVE EX. GUARDRAIL

30D

7C 10'

11'

5'

5' TERRACE  
5' CONCRETE SIDEWALK

6.5' CONCRETE SIDEWALK

RETAINING WALL

MATCH EXISTING

SLOPE INTERCEPT (TYP)

0710-113-0701-6  
EULAINIE V SCHRACK CDM UNT  
OWNR ASSC % P NJOKANMA  
1001 S Thompson Dr #CDM

0710-113-0703-2  
SALERNO, JERRY & ANITA  
106 Emma Ct

0710-113-0704-0  
SCHROECKENTHALER, THOMAS  
& JILL SCHROECKENTHALER  
110 Emma Ct

0710-113-0705-8  
SCHROECKENTHALER, THOMAS  
& JILL SCHROECKENTHALER  
114 Emma Ct

0710-113-0706-6  
SCHROECKENTHALER, THOMAS  
& JILL A SCHROECKENTHALER  
118 Emma Ct

0710-113-0707-4  
SCHUEFFNER, TYLER  
ANGELA SCHUEFFNER  
117 Emma Ct

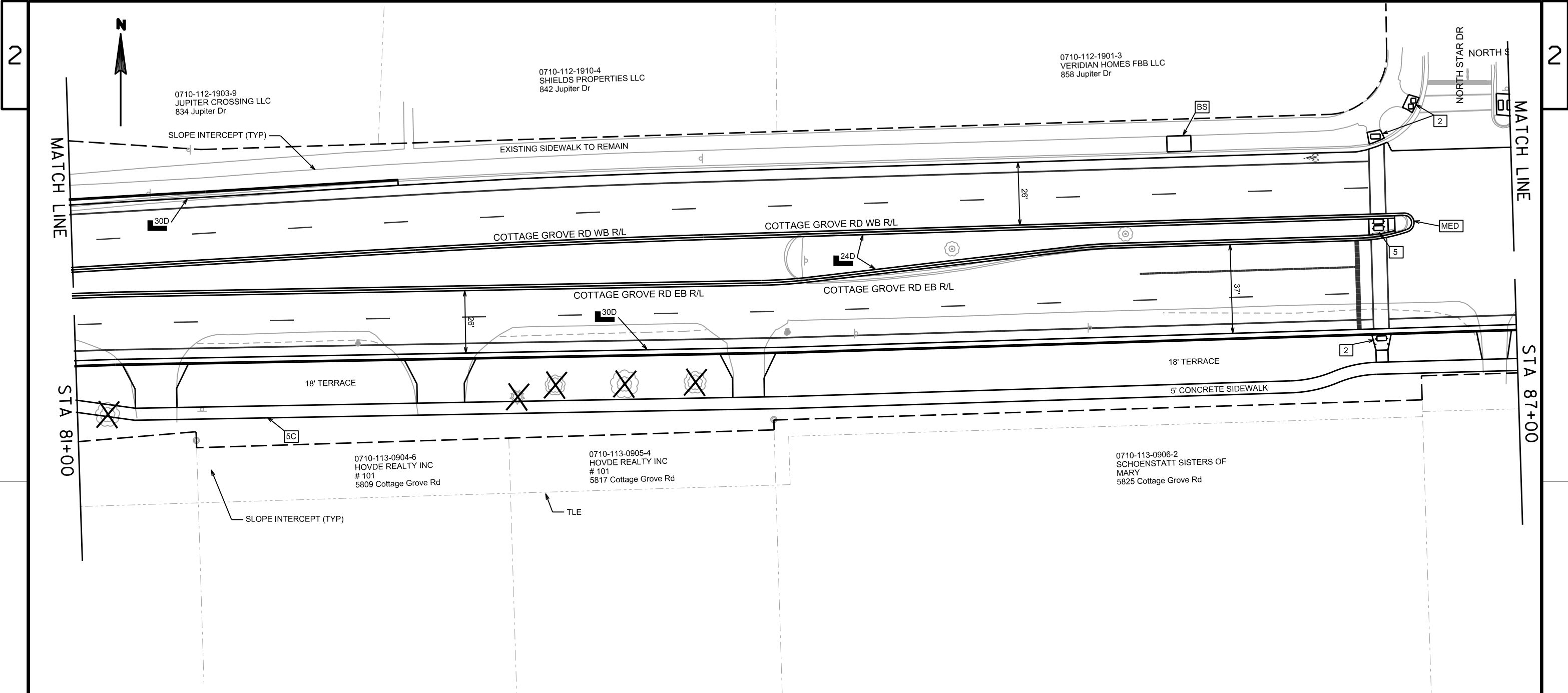
LEGEND

- XXXXX SAWCUT
- ▣ CURB RAMP DETECTABLE WARNING FIELD (SEE S.D.D.)
- # CURB RAMP TYPE # (SEE S.D.D.)
- ZZ-Z CONCRETE CURB & GUTTER 'ZZ'-INCH TYPE 'Z' SPECIAL (SEE CONSTRUCTION DETAILS)
- BS BUS STOP (SEE DETAILS)
- 5C OR 7C CONCRETE SIDEWALK 5-INCH OR 7-INCH (TERRACE TO BE SEED IF NOT NOTED)
- ▭ CONCRETE DRIVEWAY 7-INCH, REMOVE EXISTING DRIVEWAY
- MED CONCRETE MEDIAN NOSE (SEE DETAILS)
- ✂ REMOVE TREE (CLEAR & GRUB)

NOTES:

1. REMOVE ALL EXISTING CURB AND GUTTER WITHIN THE LIMITS OF THE PROPOSED CURB AND GUTTER.
2. REMOVE ALL EXISTING SIDEWALK WITHIN THE LIMITS OF THE PROPOSED SIDEWALK.

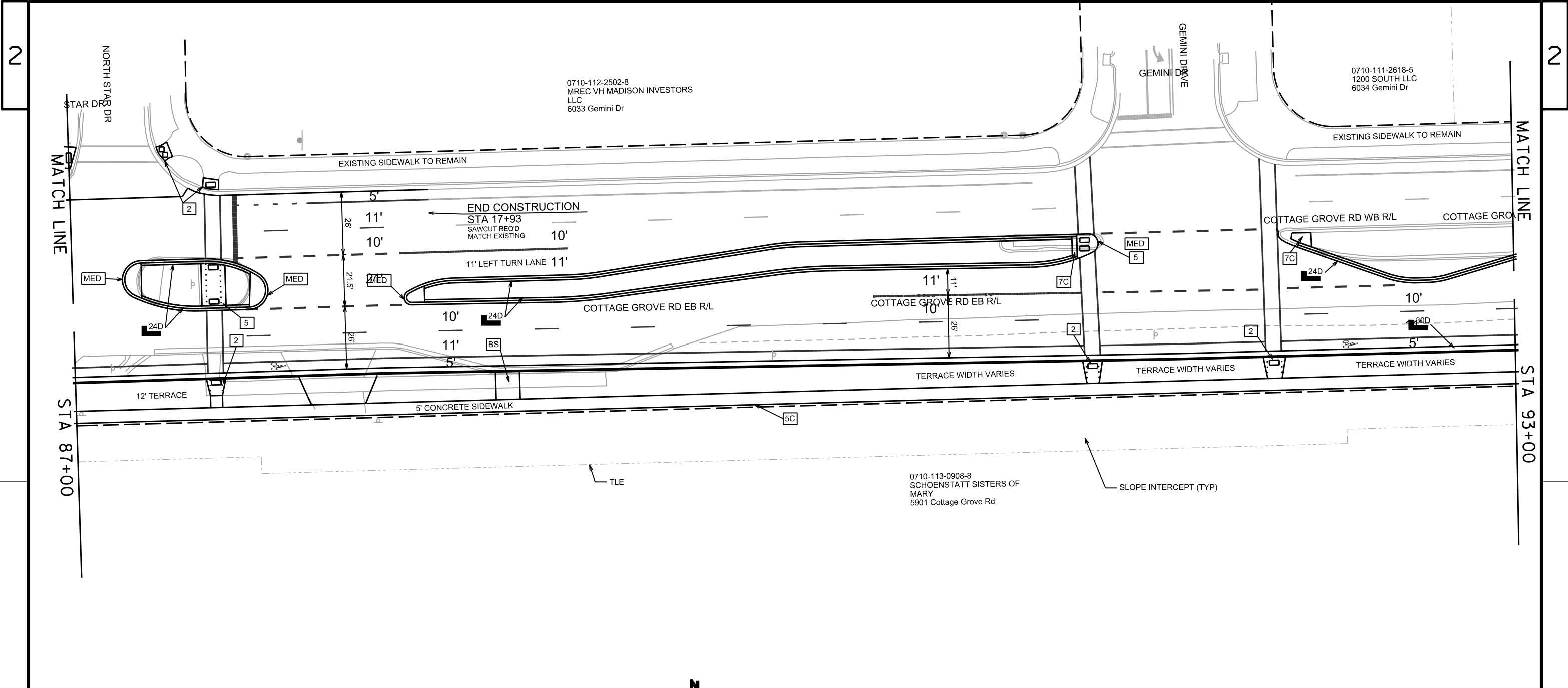




**LEGEND**

- XXXXX SAWCUT
- ▤ CURB RAMP DETECTABLE WARNING FIELD (SEE S.D.D.)
- # CURB RAMP TYPE # (SEE S.D.D.)
- ZZ-Z CONCRETE CURB & GUTTER 'Z'-INCH TYPE 'Z' SPECIAL (SEE CONSTRUCTION DETAILS)
- BS BUS STOP (SEE DETAILS)
- 5C OR 7C CONCRETE SIDEWALK 5-INCH OR 7-INCH (TERRACE TO BE SEED IF NOT NOTED)
- ☐ CONCRETE DRIVEWAY 7-INCH, REMOVE EXISTING DRIVEWAY
- MED CONCRETE MEDIAN NOSE (SEE DETAILS)
- ✕ REMOVE TREE (CLEAR & GRUB)

- NOTES:**
1. REMOVE ALL EXISTING CURB AND GUTTER WITHIN THE LIMITS OF THE PROPOSED CURB AND GUTTER.
  2. REMOVE ALL EXISTING SIDEWALK WITHIN THE LIMITS OF THE PROPOSED SIDEWALK.
  3. SIDEWALK CONSTRUCTED THROUGH DRIVEWAYS IS TO BE CONCRETE SIDEWALK 7-INCH.



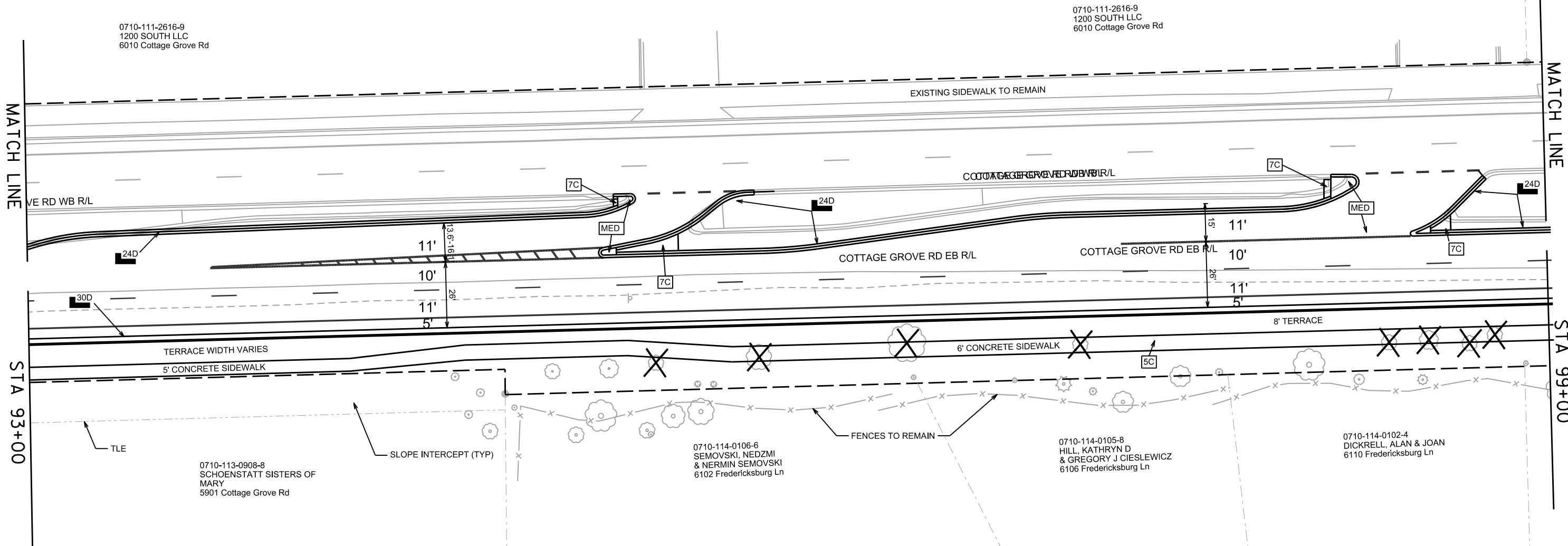
**LEGEND**

- XXXXX SAWCUT
- CURB RAMP DETECTABLE WARNING FIELD (SEE S.D.D.)
- CURB RAMP TYPE # (SEE S.D.D.)
- CONCRETE CURB & GUTTER 'ZZ'-INCH TYPE 'Z' SPECIAL (SEE CONSTRUCTION DETAILS)
- BUS STOP (SEE DETAILS)
- CONCRETE SIDEWALK 5-INCH OR 7-INCH (TERRACE TO BE SEED IF NOT NOTED)
- CONCRETE DRIVEWAY 7-INCH, REMOVE EXISTING DRIVEWAY
- CONCRETE MEDIAN NOSE (SEE DETAILS)
- REMOVE TREE (CLEAR & GRUB)

- NOTES:**
1. REMOVE ALL EXISTING CURB AND GUTTER WITHIN THE LIMITS OF THE PROPOSED CURB AND GUTTER.
  2. REMOVE ALL EXISTING SIDEWALK WITHIN THE LIMITS OF THE PROPOSED SIDEWALK.
  3. SIDEWALK CONSTRUCTED THROUGH DRIVEWAYS IS TO BE CONCRETE SIDEWALK 7-INCH





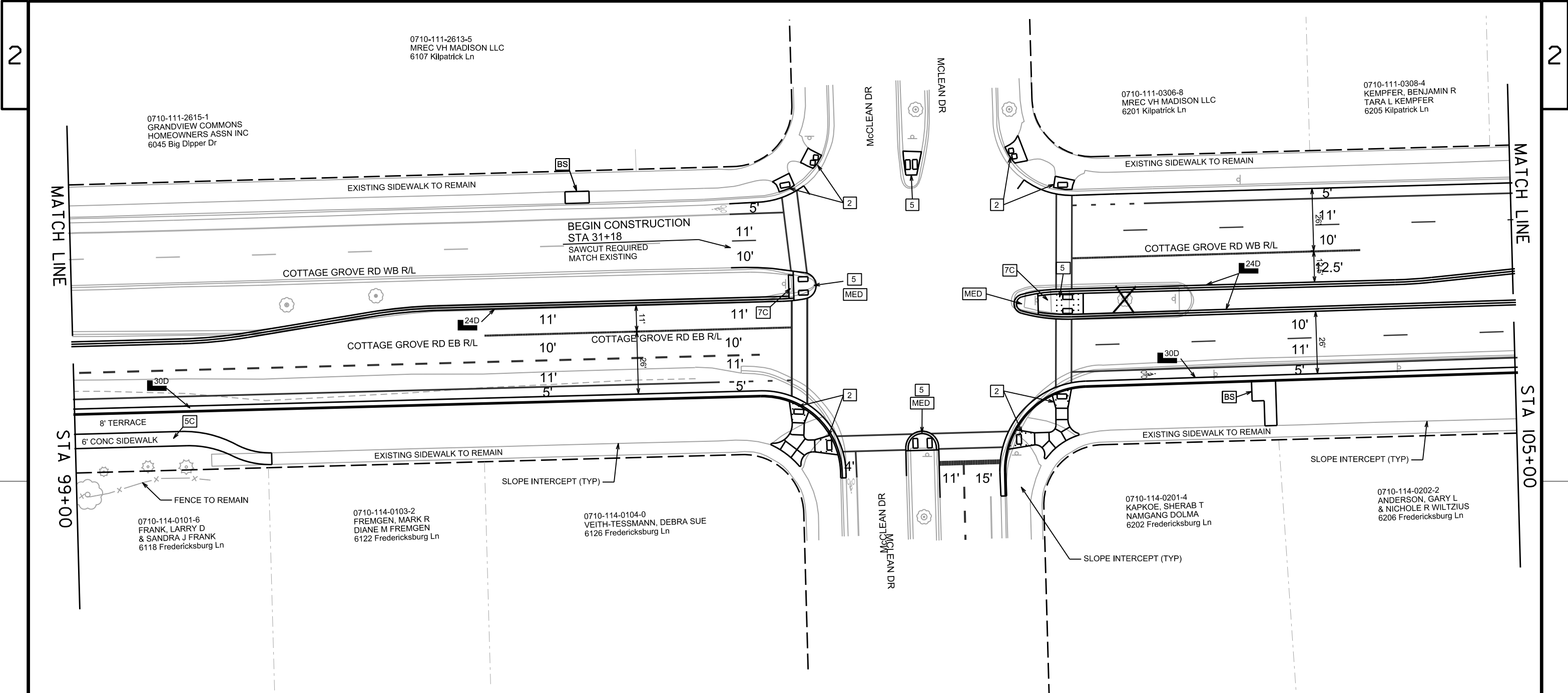


LEGEND

- XXXXX SAWCUT
- ▨ CURB RAMP DETECTABLE WARNING FIELD (SEE S.D.D.)
- # CURB RAMP TYPE # (SEE S.D.D.)
- ZZ-Z CONCRETE CURB & GUTTER 'ZZ'-INCH TYPE 'Z' SPECIAL (SEE CONSTRUCTION DETAILS)
- BS BUS STOP (SEE DETAILS)
- 5C OR 7C CONCRETE SIDEWALK 5-INCH OR 7-INCH (TERRACE TO BE SEED IF NOT NOTED)
- ▭ CONCRETE DRIVEWAY 7-INCH, REMOVE EXISTING DRIVEWAY
- MED CONCRETE MEDIAN NOSE (SEE DETAILS)
- ✕ REMOVE TREE (CLEAR & GRUB)



NOTES:  
 1. REMOVE ALL EXISTING CURB AND GUTTER WITHIN THE LIMITS OF THE PROPOSED CURB AND GUTTER.  
 2. REMOVE ALL EXISTING SIDEWALK WITHIN THE LIMITS OF THE PROPOSED SIDEWALK.

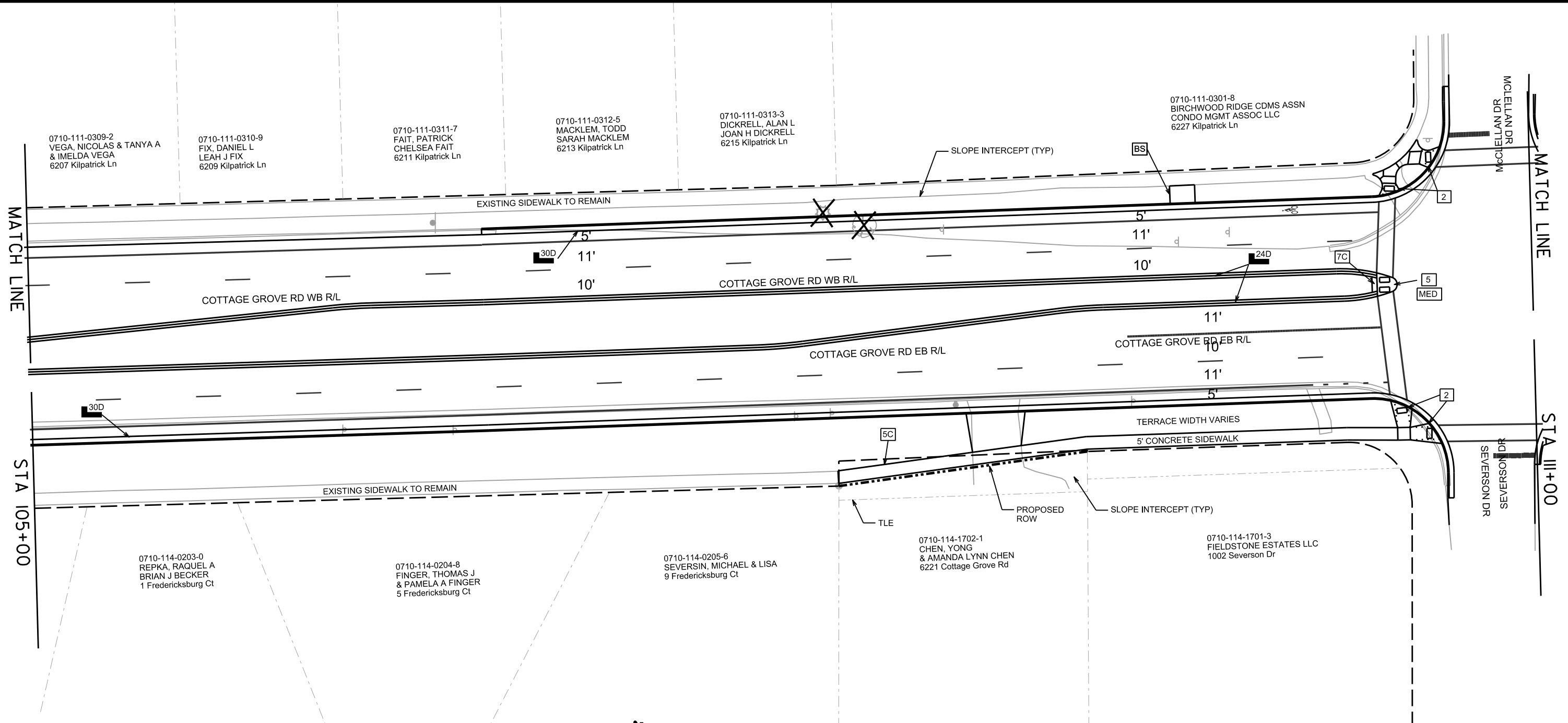


**LEGEND**

- XXXXX SAWCUT
- ▨ CURB RAMP DETECTABLE WARNING FIELD (SEE S.D.D.)
- # CURB RAMP TYPE # (SEE S.D.D.)
- ZZ-Z CONCRETE CURB & GUTTER 'ZZ'-INCH TYPE 'Z' SPECIAL (SEE CONSTRUCTION DETAILS)
- BS BUS STOP (SEE DETAILS)
- 5C OR 7C CONCRETE SIDEWALK 5-INCH OR 7-INCH (TERRACE TO BE SEED IF NOT NOTED)
- CONCRETE DRIVEWAY 7-INCH, REMOVE EXISTING DRIVEWAY
- MED CONCRETE MEDIAN NOSE (SEE DETAILS)
- X REMOVE TREE (CLEAR & GRUB)



NOTES:  
 1. REMOVE ALL EXISTING CURB AND GUTTER WITHIN THE LIMITS OF THE PROPOSED CURB AND GUTTER.  
 2. REMOVE ALL EXISTING SIDEWALK WITHIN THE LIMITS OF THE PROPOSED SIDEWALK.

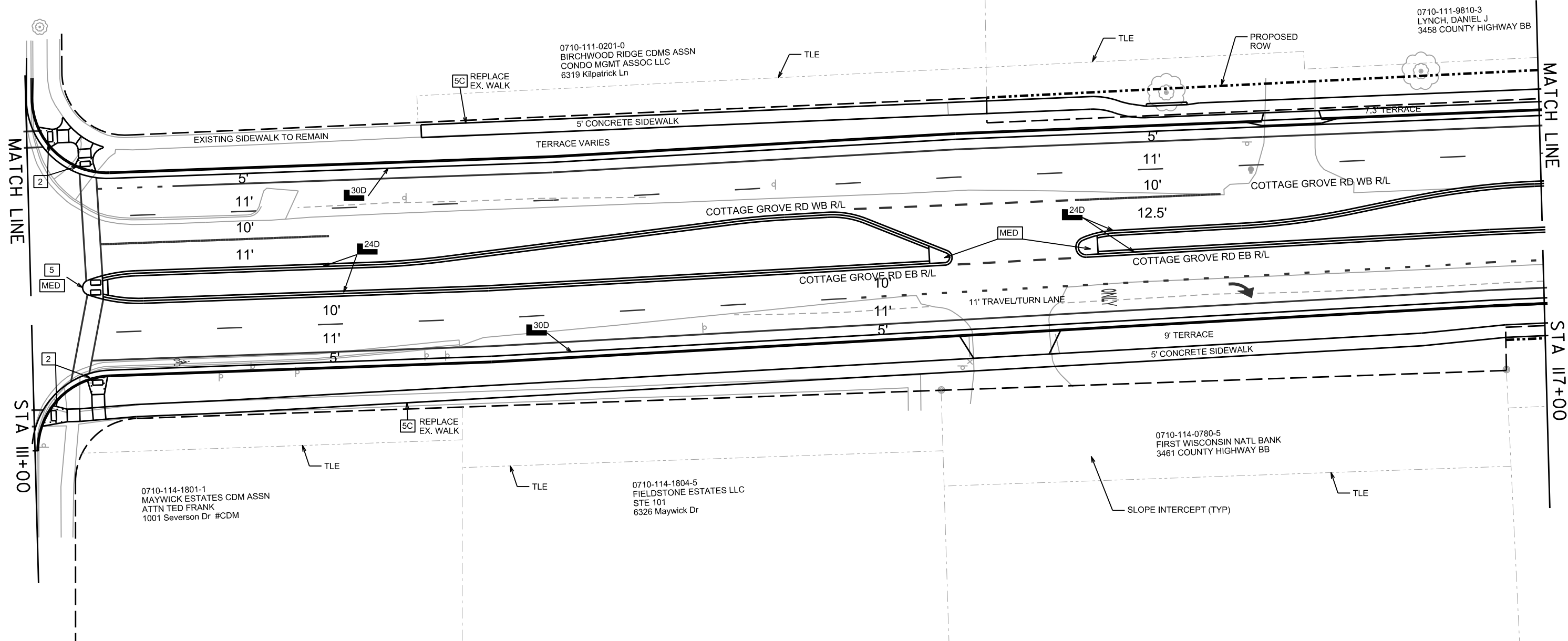


LEGEND

- XXXXX SAWCUT
- ▣ CURB RAMP DETECTABLE WARNING FIELD (SEE S.D.D.)
- # CURB RAMP TYPE # (SEE S.D.D.)
- ZZ-Z CONCRETE CURB & GUTTER 'ZZ'-INCH TYPE 'Z' SPECIAL (SEE CONSTRUCTION DETAILS)
- BS BUS STOP (SEE DETAILS)
- 5C OR 7C CONCRETE SIDEWALK 5-INCH OR 7-INCH (TERRACE TO BE SEED IF NOT NOTED)
- ▭ CONCRETE DRIVEWAY 7-INCH, REMOVE EXISTING DRIVEWAY
- MED CONCRETE MEDIAN NOSE (SEE DETAILS)
- ✕ REMOVE TREE (CLEAR & GRUB)

NOTES:

1. REMOVE ALL EXISTING CURB AND GUTTER WITHIN THE LIMITS OF THE PROPOSED CURB AND GUTTER.
2. REMOVE ALL EXISTING SIDEWALK WITHIN THE LIMITS OF THE PROPOSED SIDEWALK.
3. SIDEWALK CONSTRUCTED THROUGH DRIVEWAYS IS TO BE CONCRETE SIDEWALK 7-INCH

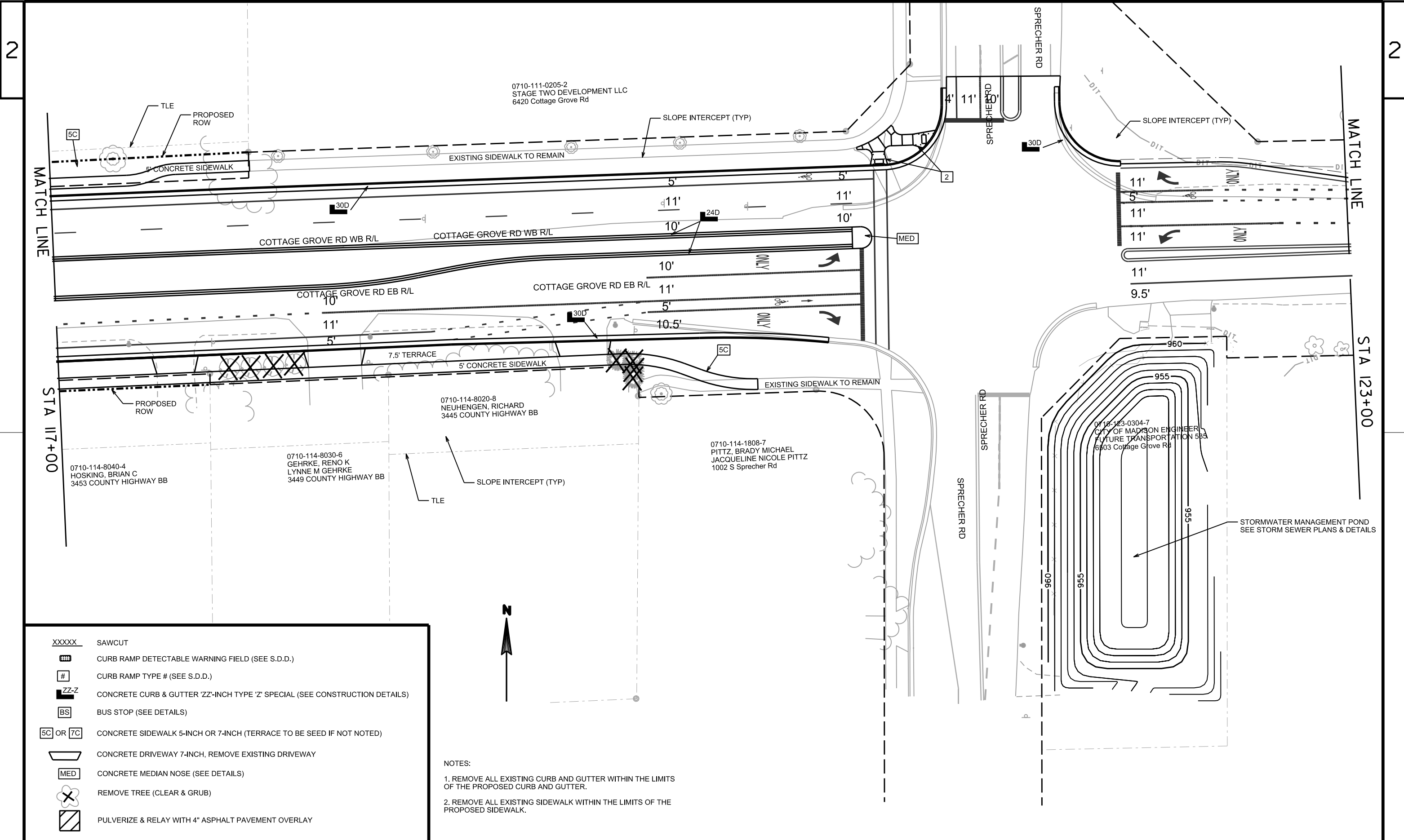


**LEGEND**

XXXXX	SAWCUT
###	CURB RAMP DETECTABLE WARNING FIELD (SEE S.D.D.)
#	CURB RAMP TYPE # (SEE S.D.D.)
ZZ-Z	CONCRETE CURB & GUTTER 'ZZ'-INCH TYPE 'Z' SPECIAL (SEE CONSTRUCTION DETAILS)
BS	BUS STOP (SEE DETAILS)
5C OR 7C	CONCRETE SIDEWALK 5-INCH OR 7-INCH (TERRACE TO BE SEED IF NOT NOTED)
[Symbol]	CONCRETE DRIVEWAY 7-INCH, REMOVE EXISTING DRIVEWAY
MED	CONCRETE MEDIAN NOSE (SEE DETAILS)
X	REMOVE TREE (CLEAR & GRUB)

- NOTES:**
1. REMOVE ALL EXISTING CURB AND GUTTER WITHIN THE LIMITS OF THE PROPOSED CURB AND GUTTER.
  2. REMOVE ALL EXISTING SIDEWALK WITHIN THE LIMITS OF THE PROPOSED SIDEWALK.
  3. SIDEWALK CONSTRUCTED THROUGH DRIVEWAYS IS TO BE CONCRETE SIDEWALK 7-INCH





XXXXX	SAWCUT
[Hatched Box]	CURB RAMP DETECTABLE WARNING FIELD (SEE S.D.D.)
#	CURB RAMP TYPE # (SEE S.D.D.)
ZZ-Z	CONCRETE CURB & GUTTER 'ZZ'-INCH TYPE 'Z' SPECIAL (SEE CONSTRUCTION DETAILS)
BS	BUS STOP (SEE DETAILS)
5C OR 7C	CONCRETE SIDEWALK 5-INCH OR 7-INCH (TERRACE TO BE SEED IF NOT NOTED)
[Trapezoid]	CONCRETE DRIVEWAY 7-INCH, REMOVE EXISTING DRIVEWAY
MED	CONCRETE MEDIAN NOSE (SEE DETAILS)
[Tree with X]	REMOVE TREE (CLEAR & GRUB)
[Diagonal Lines]	PULVERIZE & RELAY WITH 4" ASPHALT PAVEMENT OVERLAY

NOTES:  
 1. REMOVE ALL EXISTING CURB AND GUTTER WITHIN THE LIMITS OF THE PROPOSED CURB AND GUTTER.  
 2. REMOVE ALL EXISTING SIDEWALK WITHIN THE LIMITS OF THE PROPOSED SIDEWALK.