

Plant Schedule:

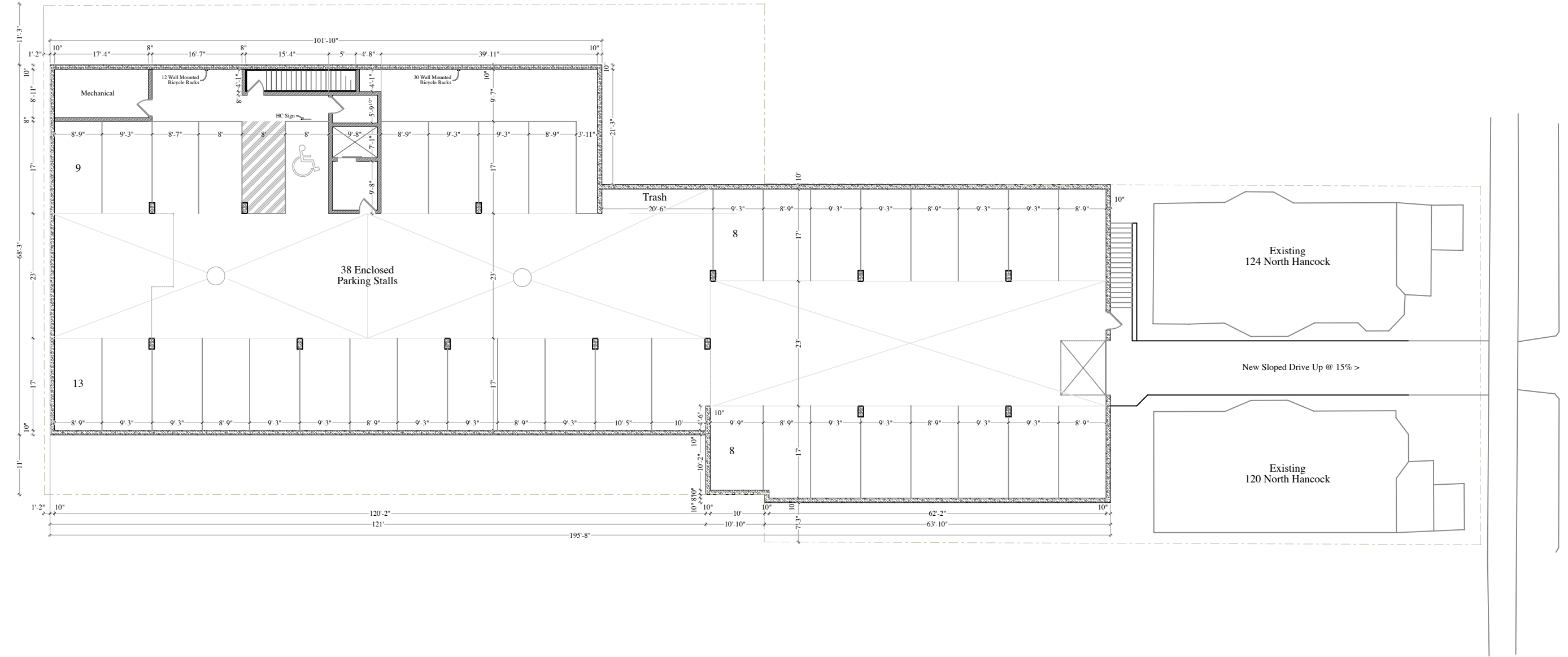
Quantity	Plant Name	Size
Trees		
2	Magnolia Xsoulangina / Saucer Magnolia	20'x30'
1	Prunus Nigra / Princess Kay Plum	15'x8'
1	Salix Matsudan / Tortusa	30'x20'
Shrubs		
2	Fossythia Inermedia / Lynwood	5'-7'x7'
3	Kolkwitzia Amabalis / Spring Beauty	6'x6'
6	Pontentilla Fruiticosa / Gold Drop	2'x2'-3'
18	Ribes Alpinum / Alpine Currant	3'x3'
3	Spirea Bulmalda / Darts Red	2'x4'
3	Virurum Lantana / Mohican	6'x6'
2	Weigelia Florida /Red Prince	5'x5'
Evergreens		
3	Juniperus Chinenis / Sea Green	4'x4'
6	Juniperus Chinenis / Old Gold	2'x3'-4'
4	Juniperus Sabina / Savin	2.5'x3'
2	Taxus Media / Tautoni	4'x4'
2	Thuja Occidentalis / Holmstrup Arborvitae	4'x4'
Perennials		
23	Hosta Montana / Aureomarginata	4'
5	Hosta Sieboldiana / Elegans	2.5'
4	Tucca / Adam's Needle	2'
75	Vinca Minor / Common Perinkle	6"
Rain Garden		
5	Salix Purpurea /Dwarf Blue Leaf Artic	3'-4'x4'
12	Japanese Sedge	
18	Garden Mint	

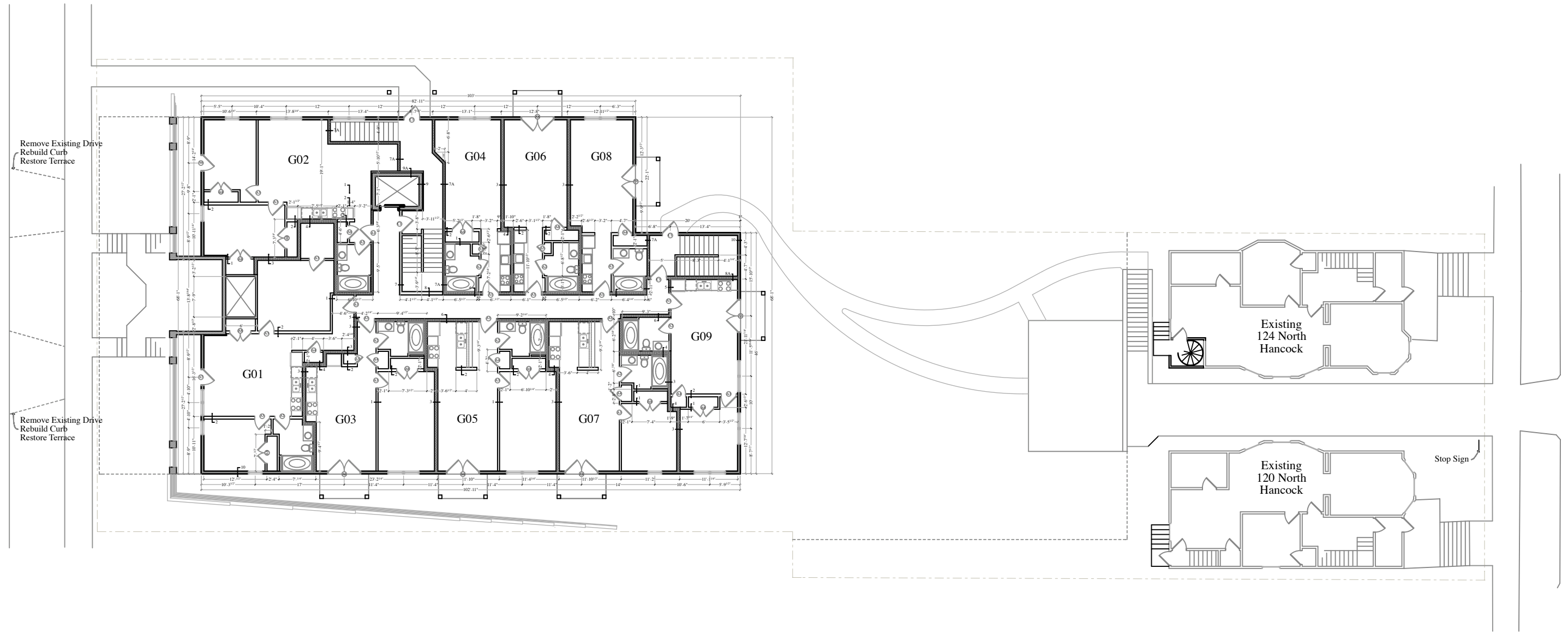
(2) Saucer Magnolia
Magnolia Xsoulangina

(1) Salix Matsudan "Tortusa"
Corkscrew Willow

Landscape Plan @ 1/16" = 1'-0"
 121 North Butler
 Madison, Wisconsin
 April 24, 2008

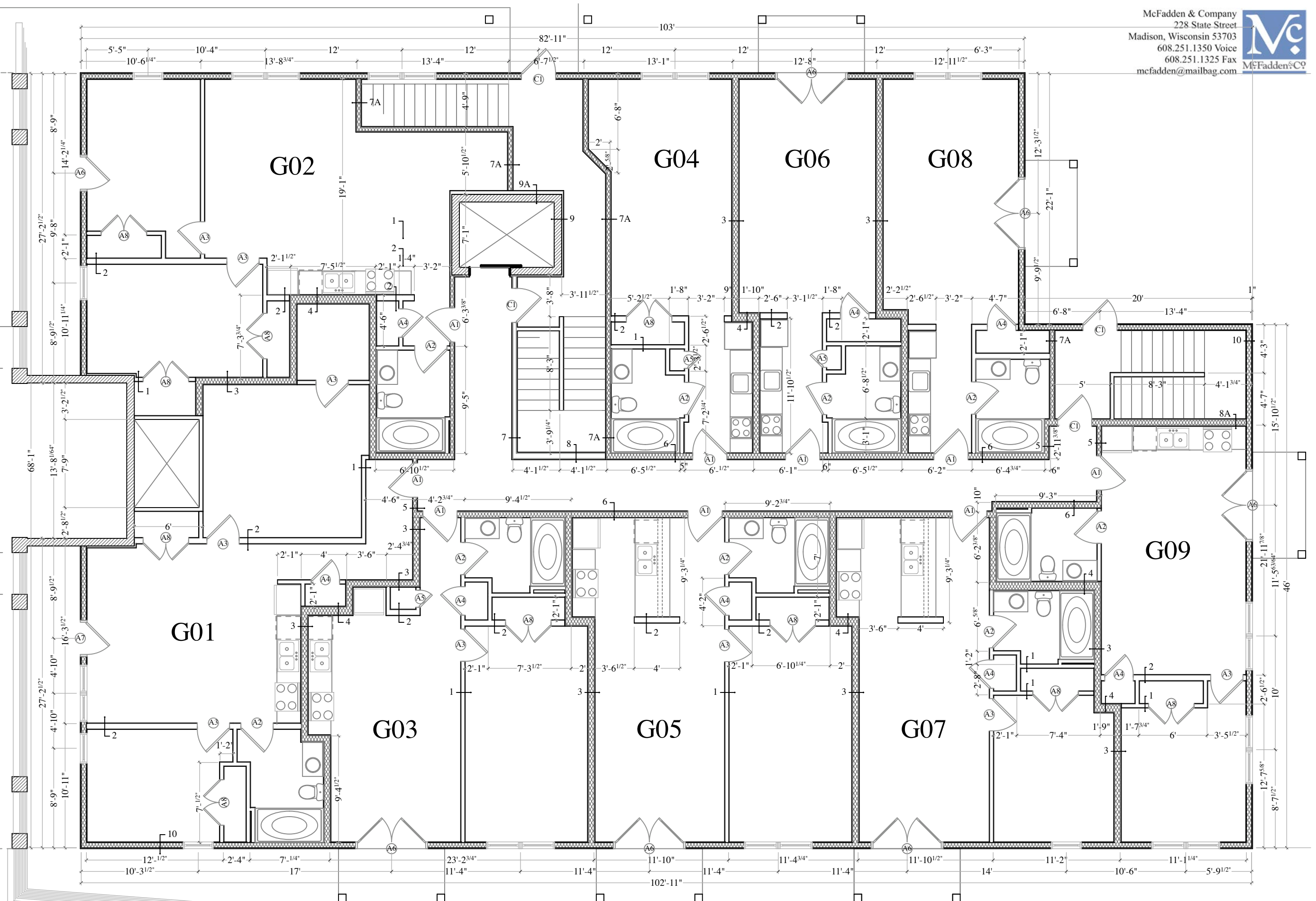
C004





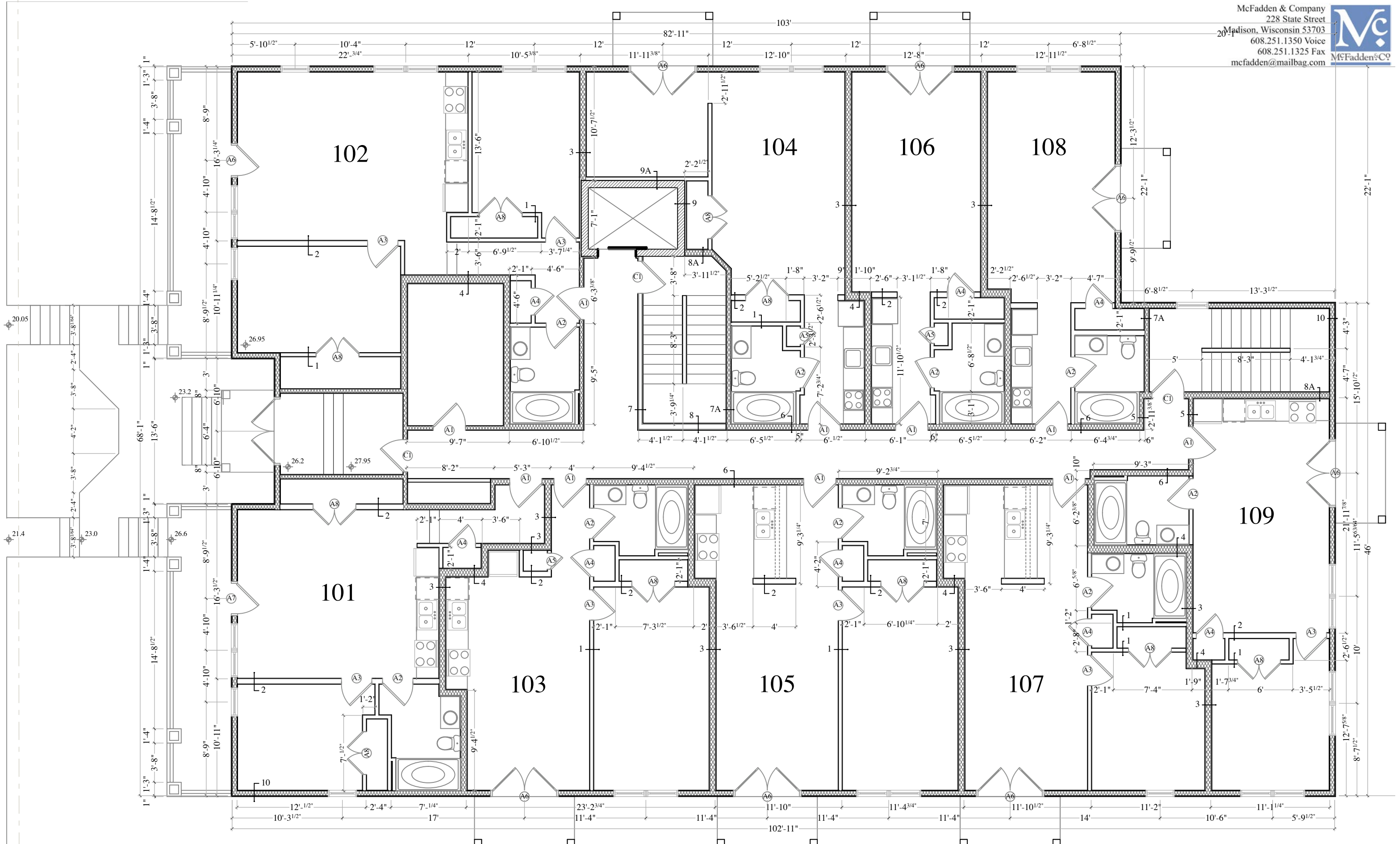
Drive

Drive



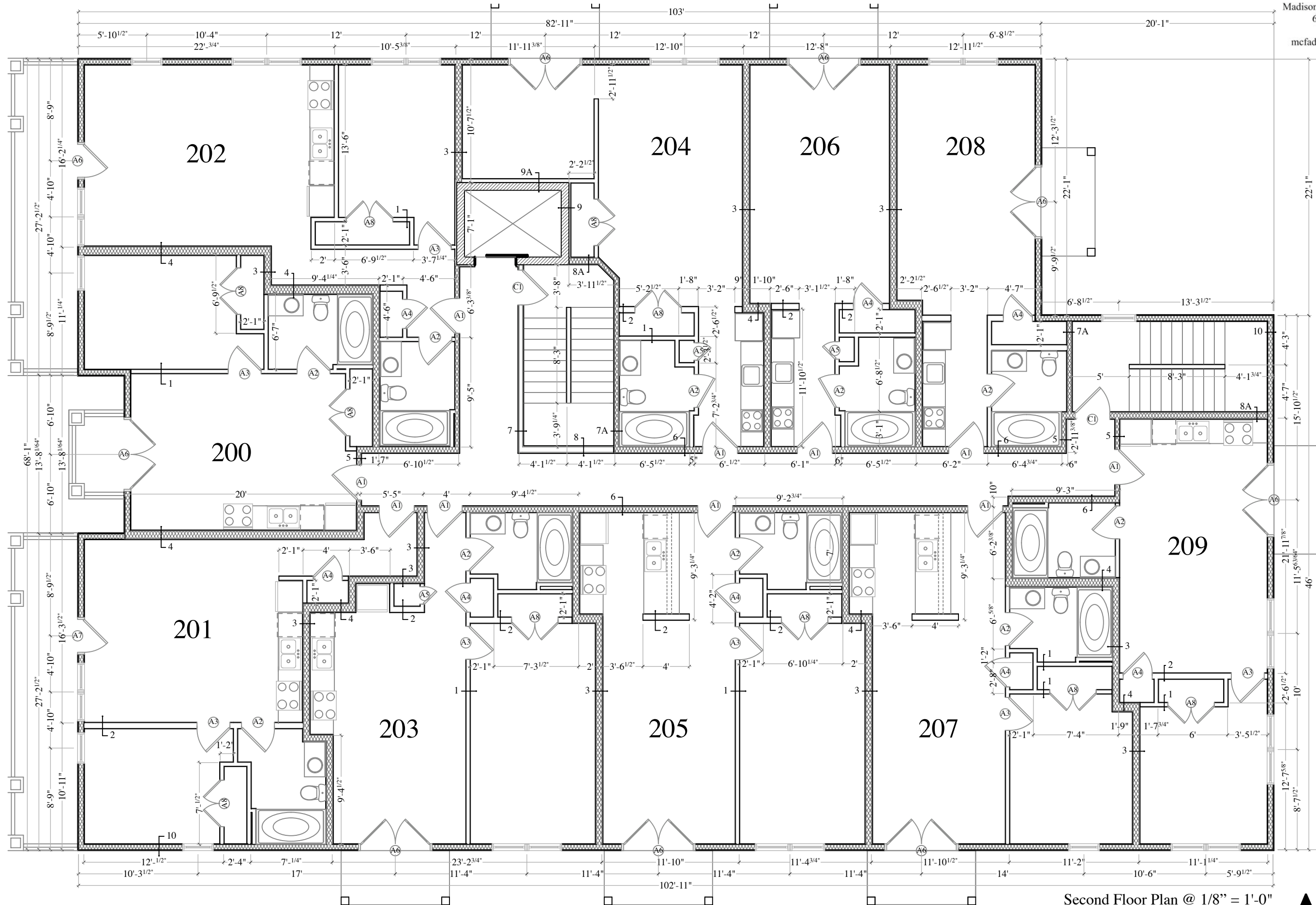
Ground Floor Plan @ 1/4" = 1'-0"
 121 North Butler
 Madison, Wisconsin
 April 24, 2008

A103



First Floor Plan @ 1/8" = 1'-0"
 121 North Butler
 Madison, Wisconsin
 April 24, 2008

A104



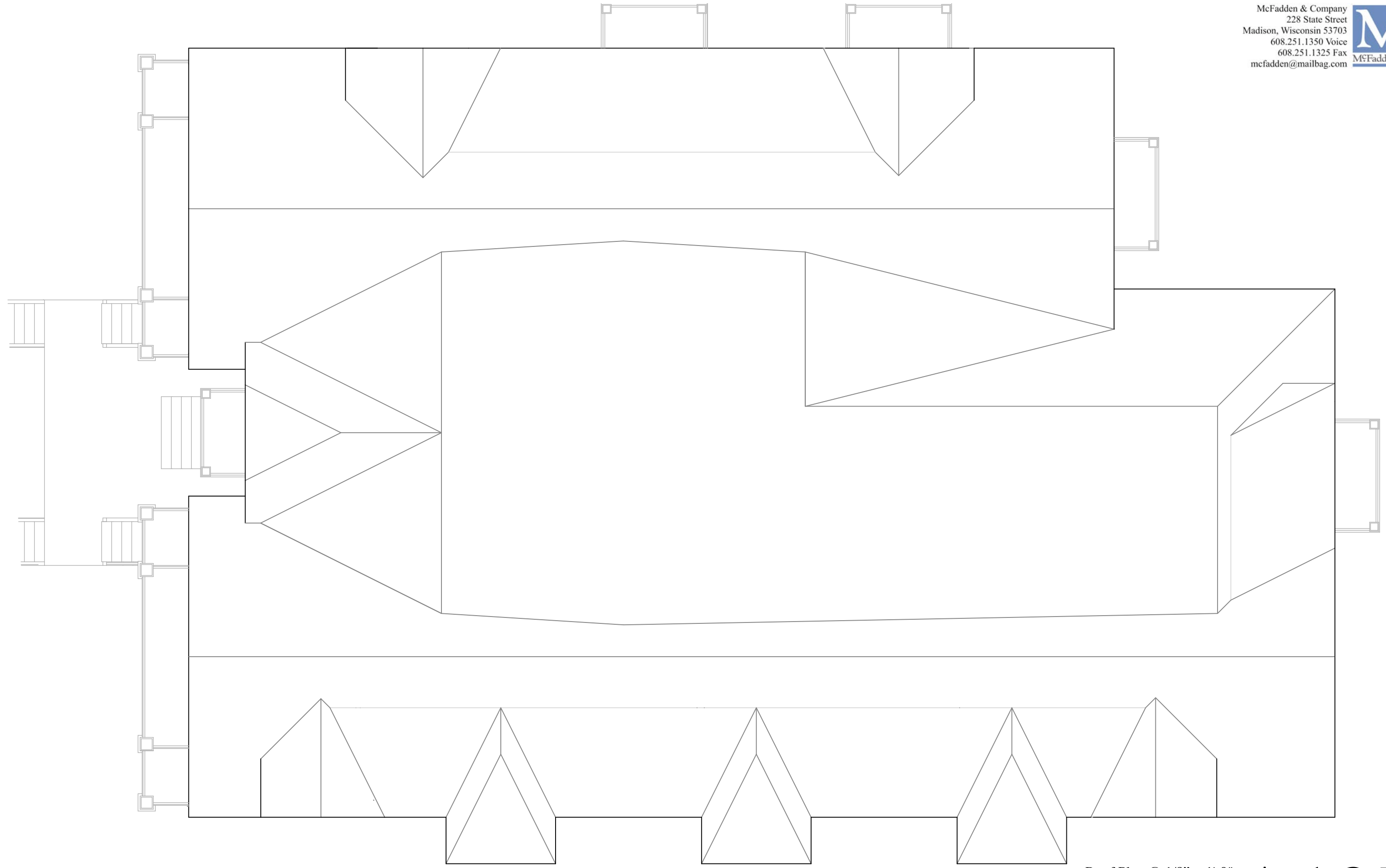
Second Floor Plan @ 1/8" = 1'-0"
 121 North Butler
 Madison, Wisconsin
 April 24, 2008

A105



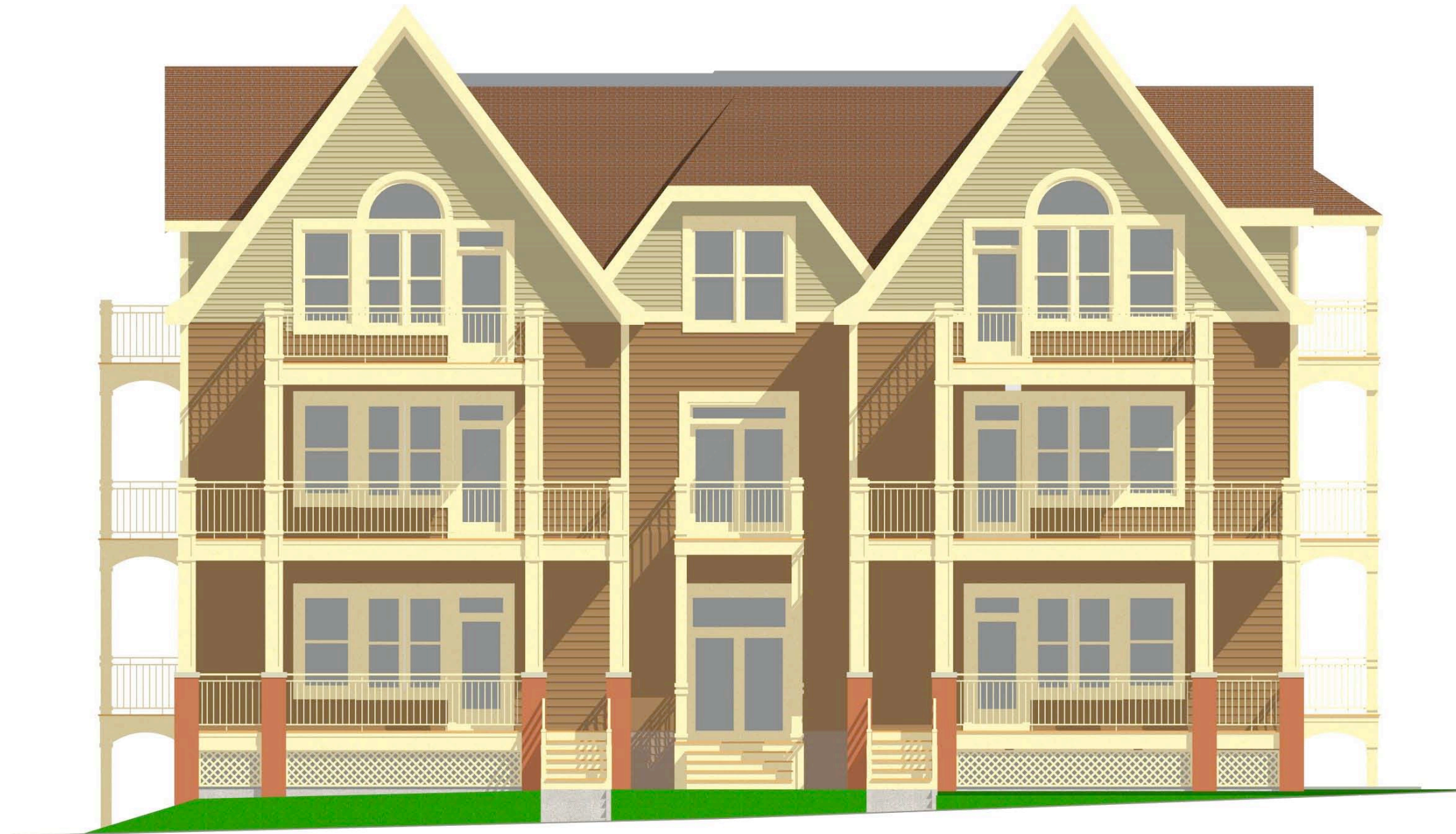
Third Floor Plan @ 1/8" = 1'-0"
 121 North Butler
 Madison, Wisconsin
 April 24, 2008

A106



Roof Plan @ 1/8" = 1'-0"
121 North Butler
Madison, Wisconsin
April 24, 2008

A107



West (Butler Street) Elevation @ 1/8" = 1'-0"
121 North Butler
Madison, Wisconsin
April 24, 2008

A201



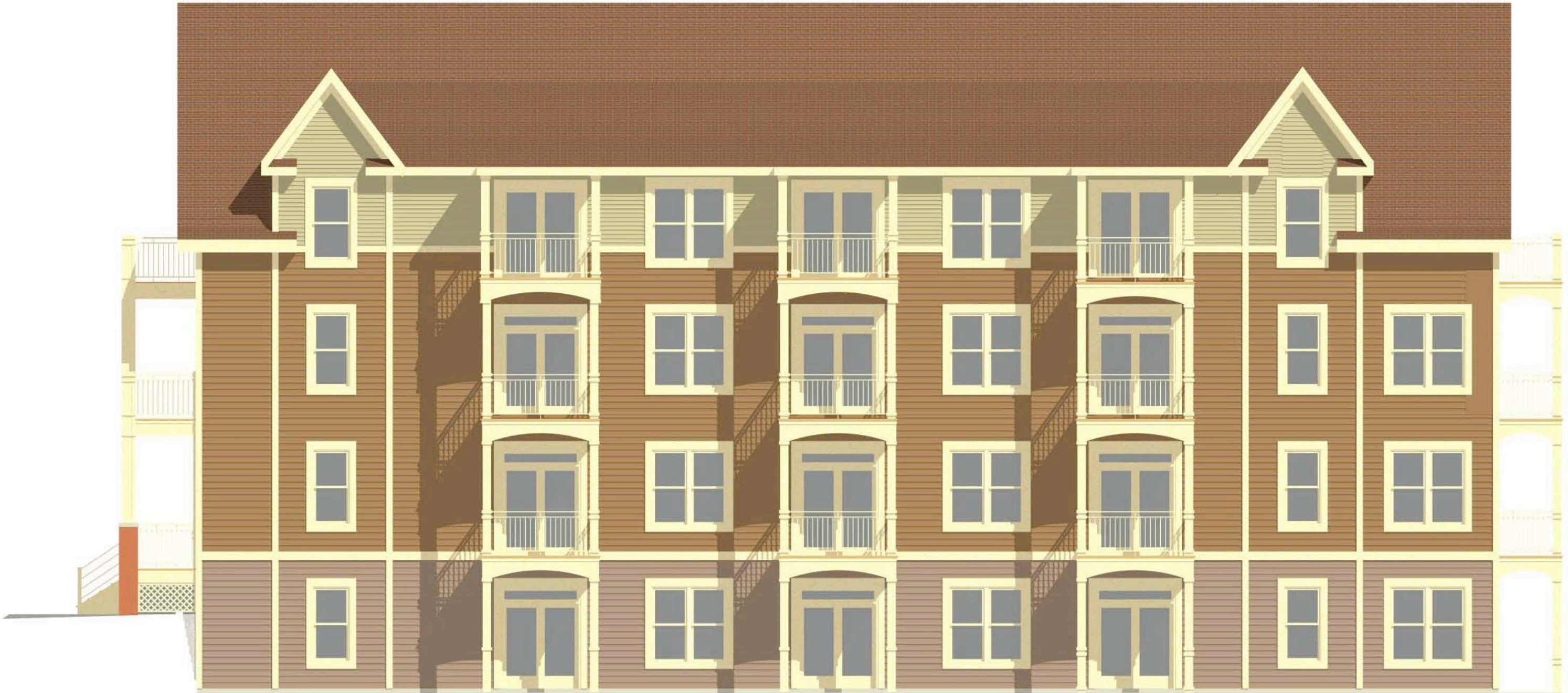
North Elevation @ 1/8" = 1'-0"
121 North Butler
Madison, Wisconsin
April 24, 2008

A202



East Elevation @ 1/8" = 1'-0"
121 North Butler
Madison, Wisconsin
April 24, 2008

A203

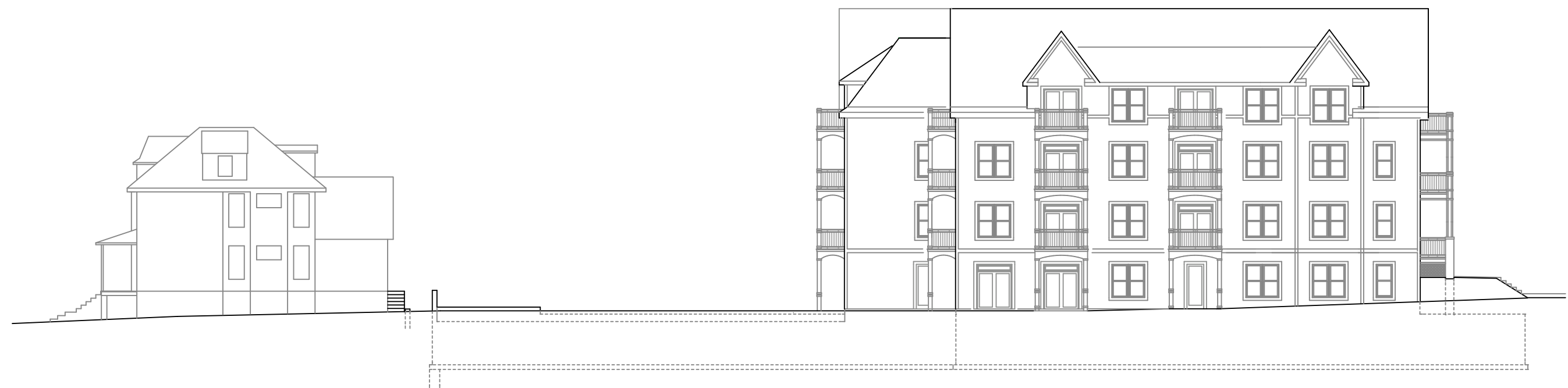


South Elevation @ 1/8" = 1'-0"
121 North Butler
Madison, Wisconsin
April 24, 2008

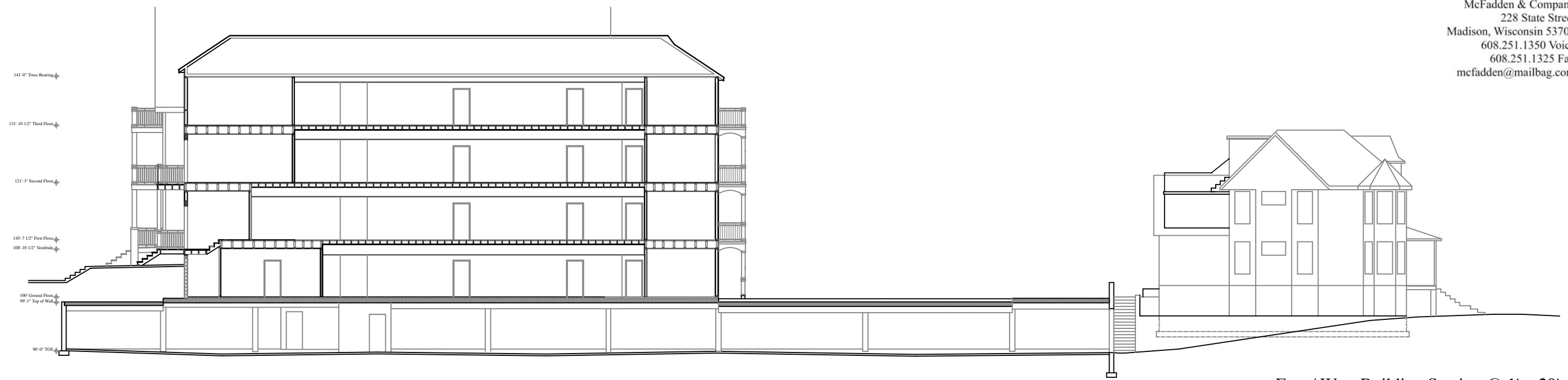
A204



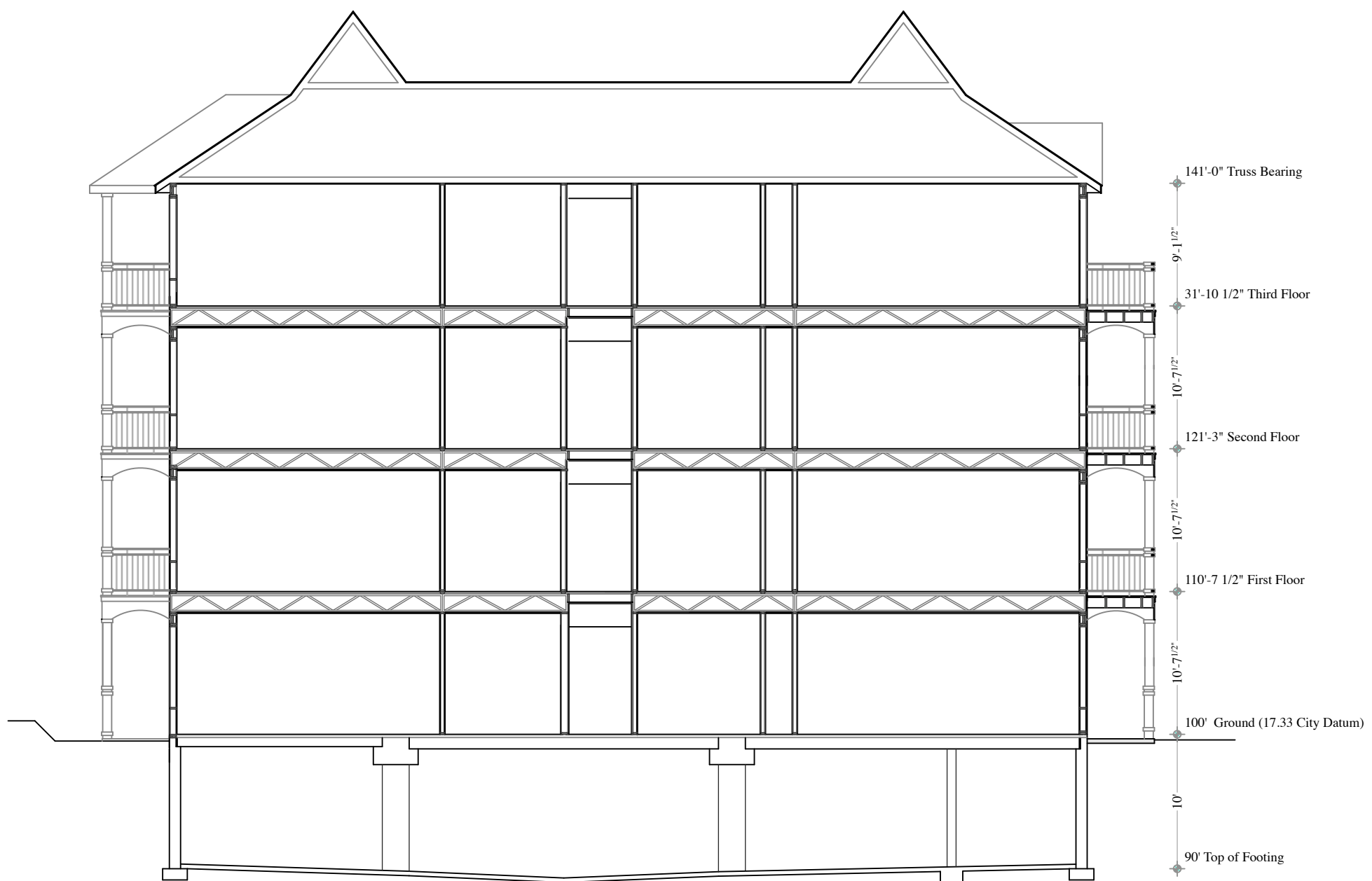
South Elevation



South Elevation



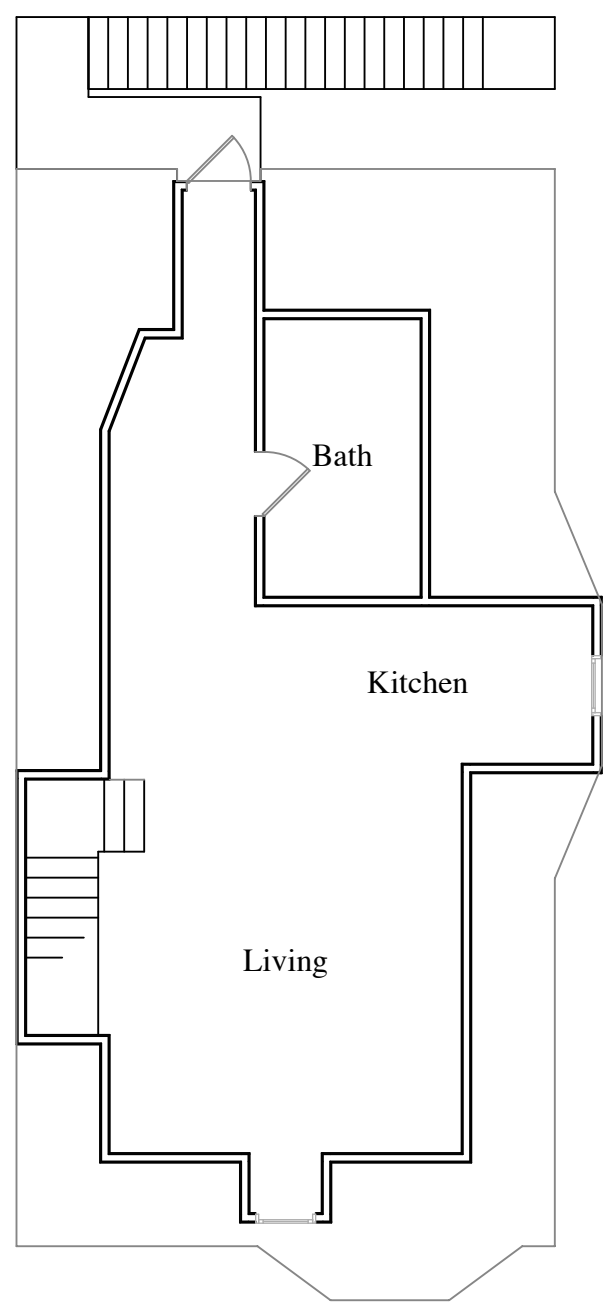
East / West Building Section @ 1' = 20'



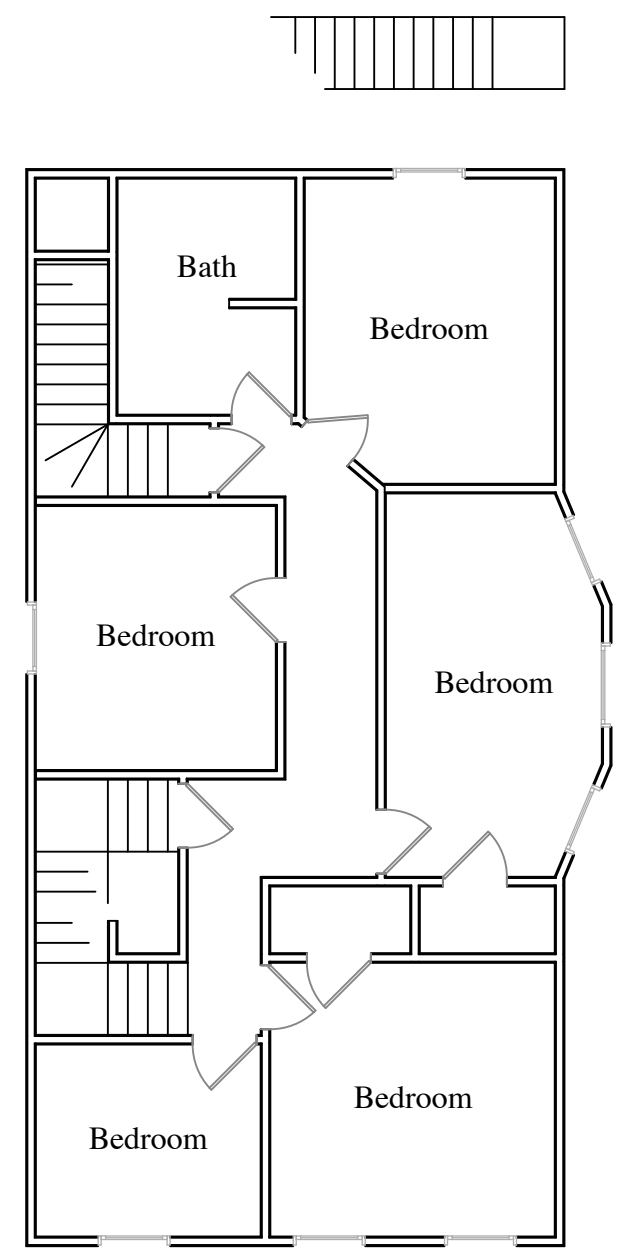
North / South Building Section @ 1' = 10'



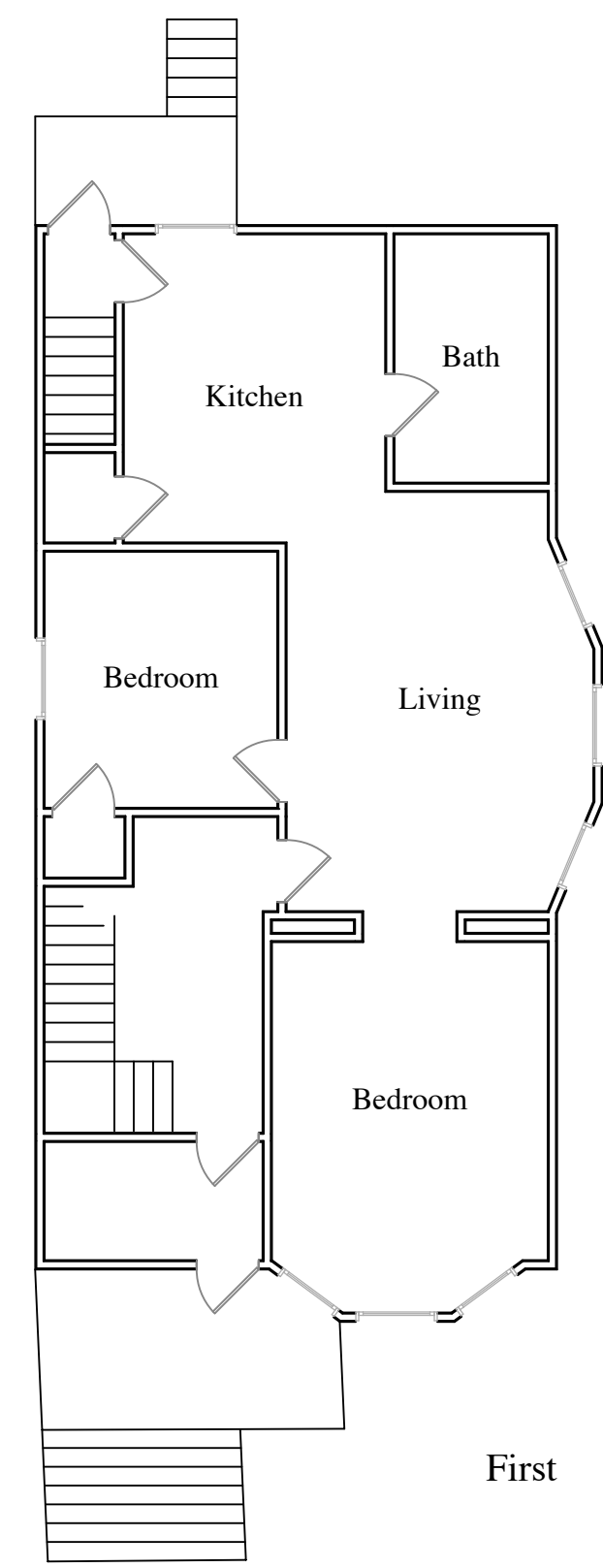
- ◆ 141'-0" Truss Bearing
- ◆ 131'-10 1/2" Third Floor
- ◆ 121'-3" Second Floor
- ◆ 110'-7 1/2" First Floor
- ◆ 100' Ground Floor
- ◆ 99' Top of Deck
- ◆ 97'-8" Top of Wall
- ◆ 90' Top of Footing



Third

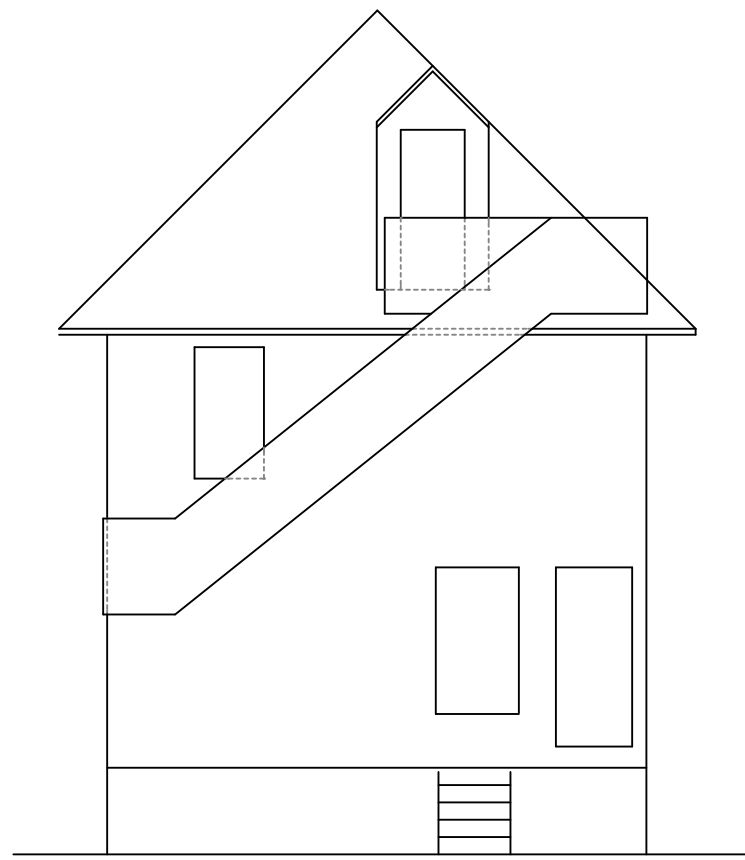


Second



First

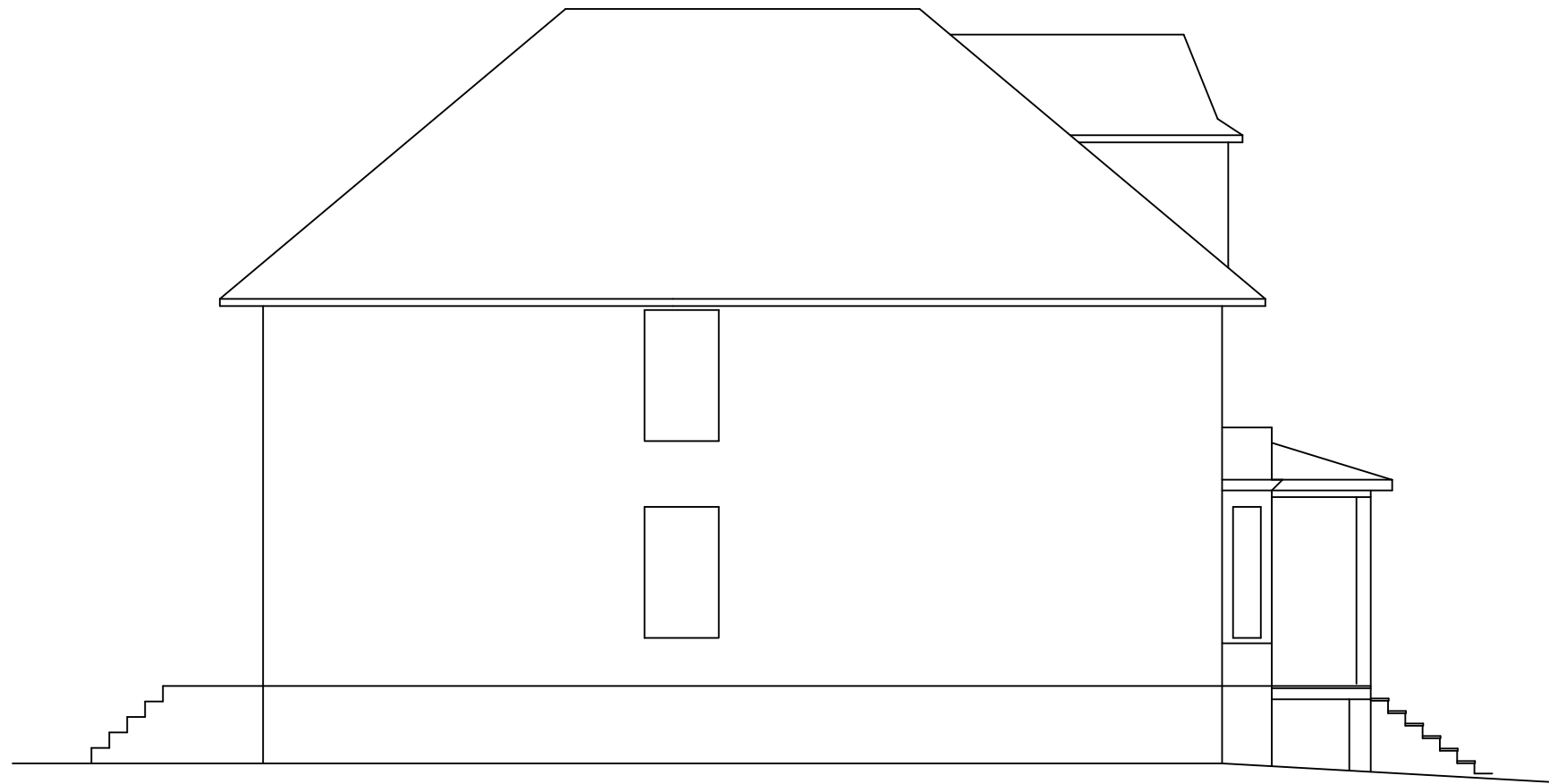




West



North

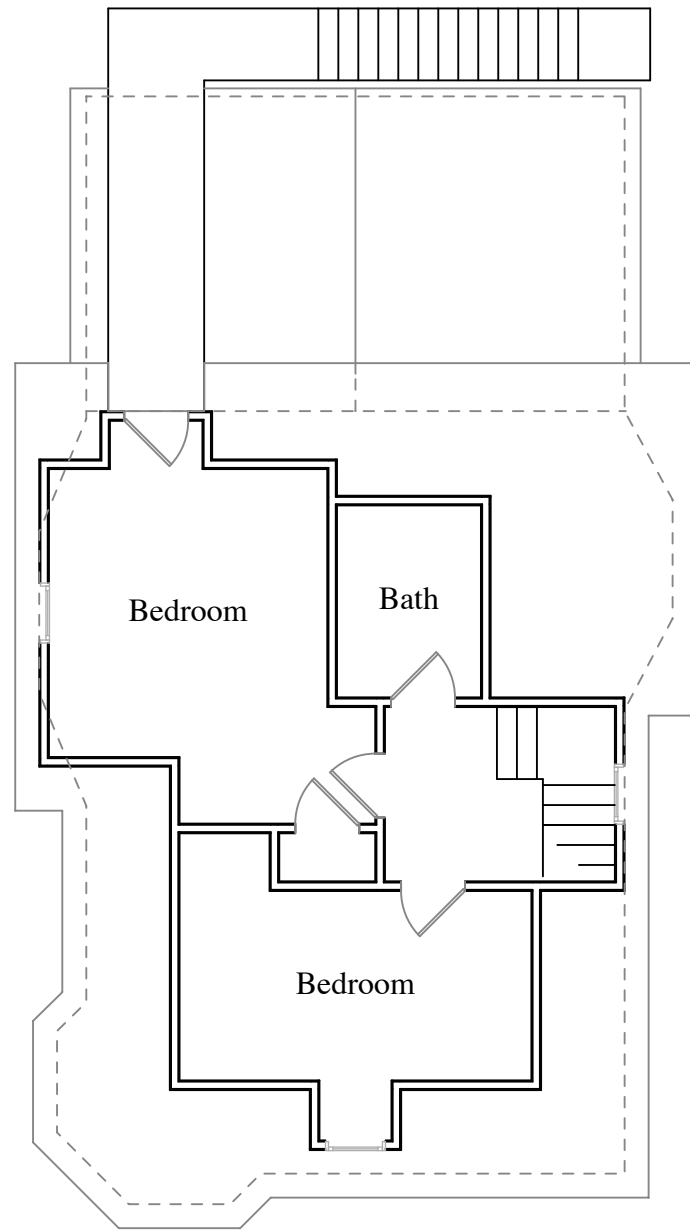


South

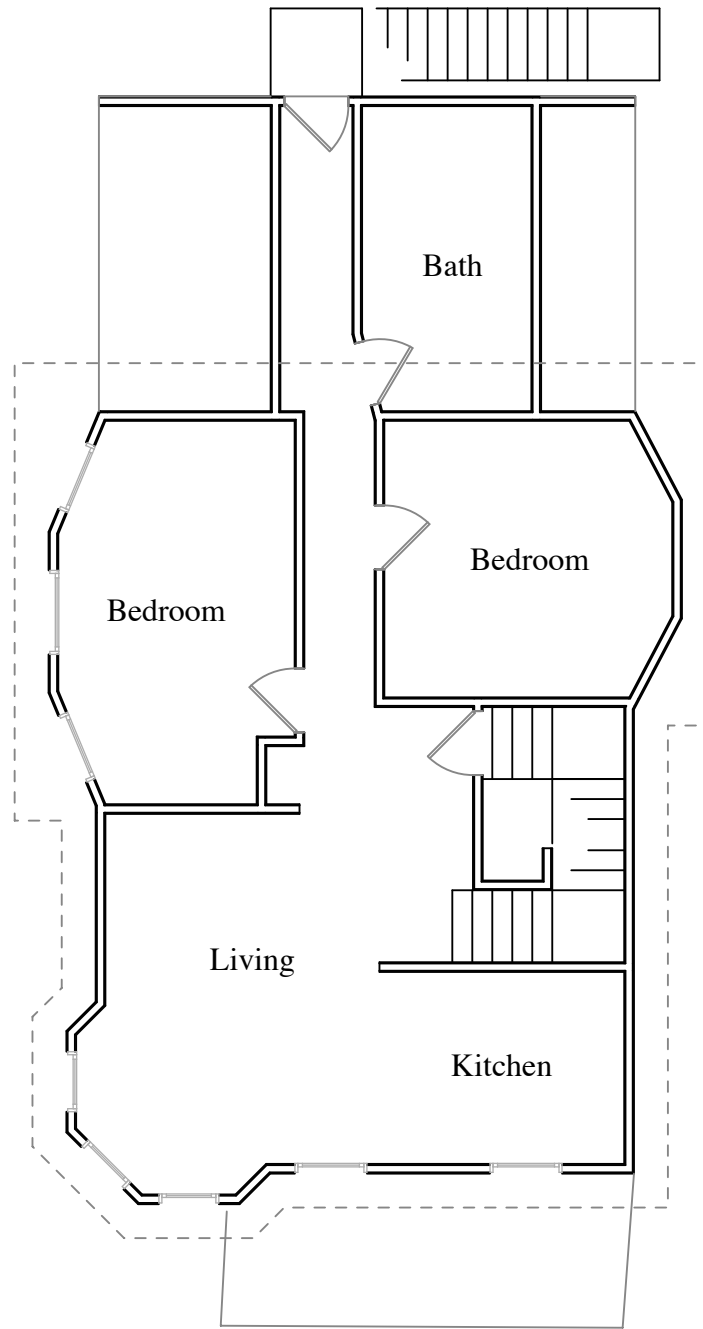


East

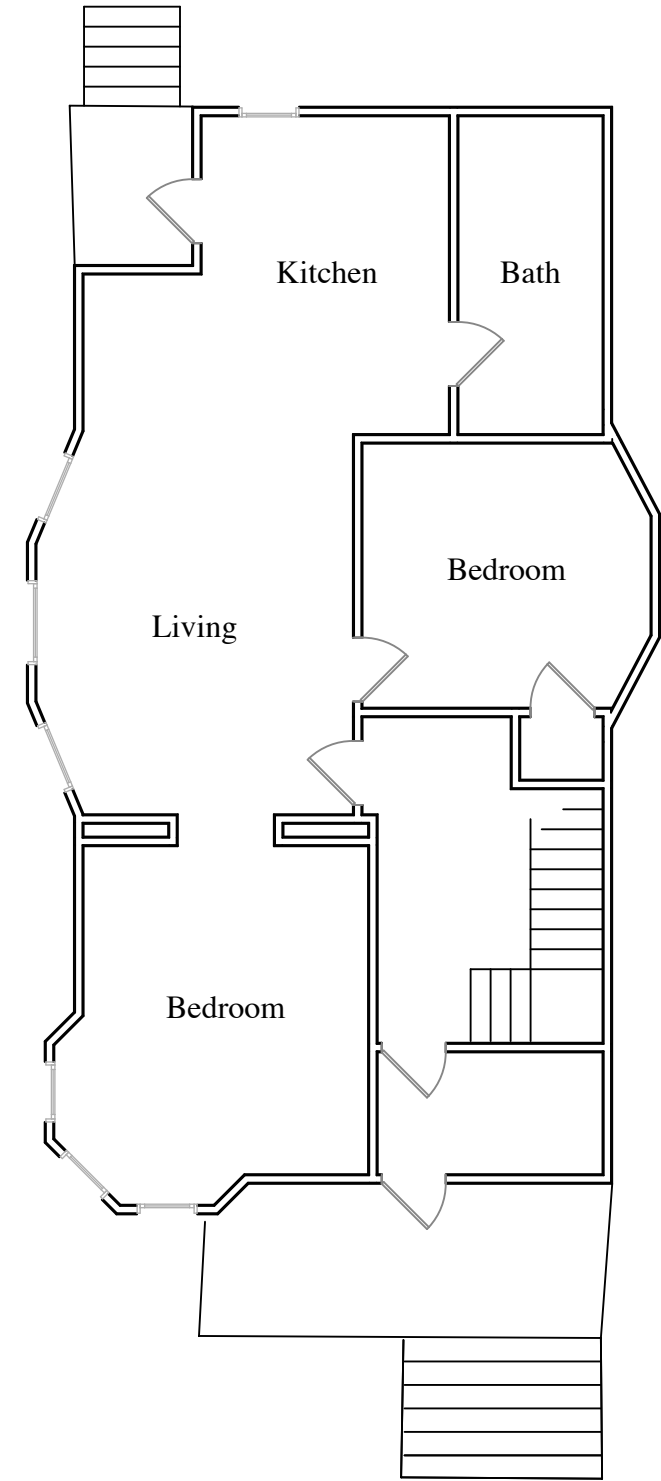
Existing Elevations @ 1/8" = 1'-0"
120 North Hancock
Madison, Wisconsin
April 24, 2008



Third

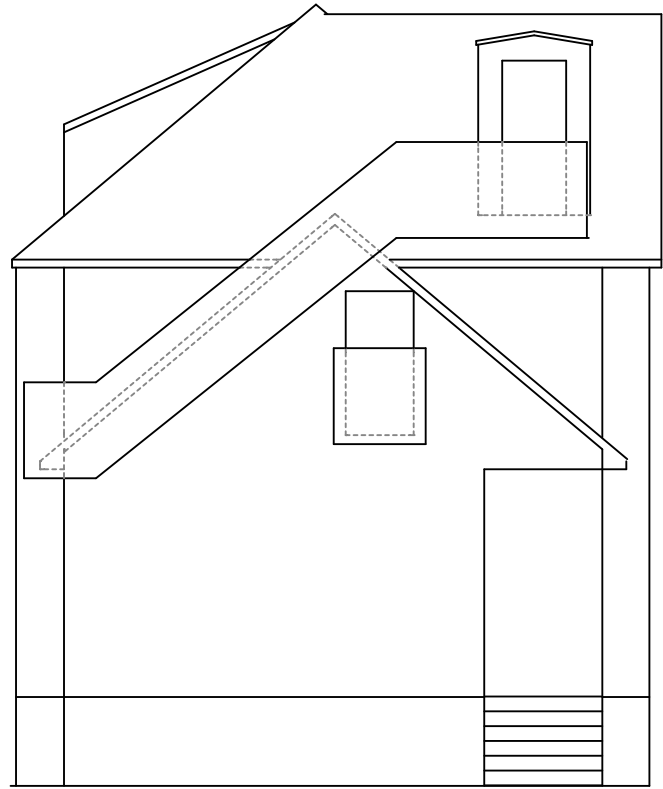


Second

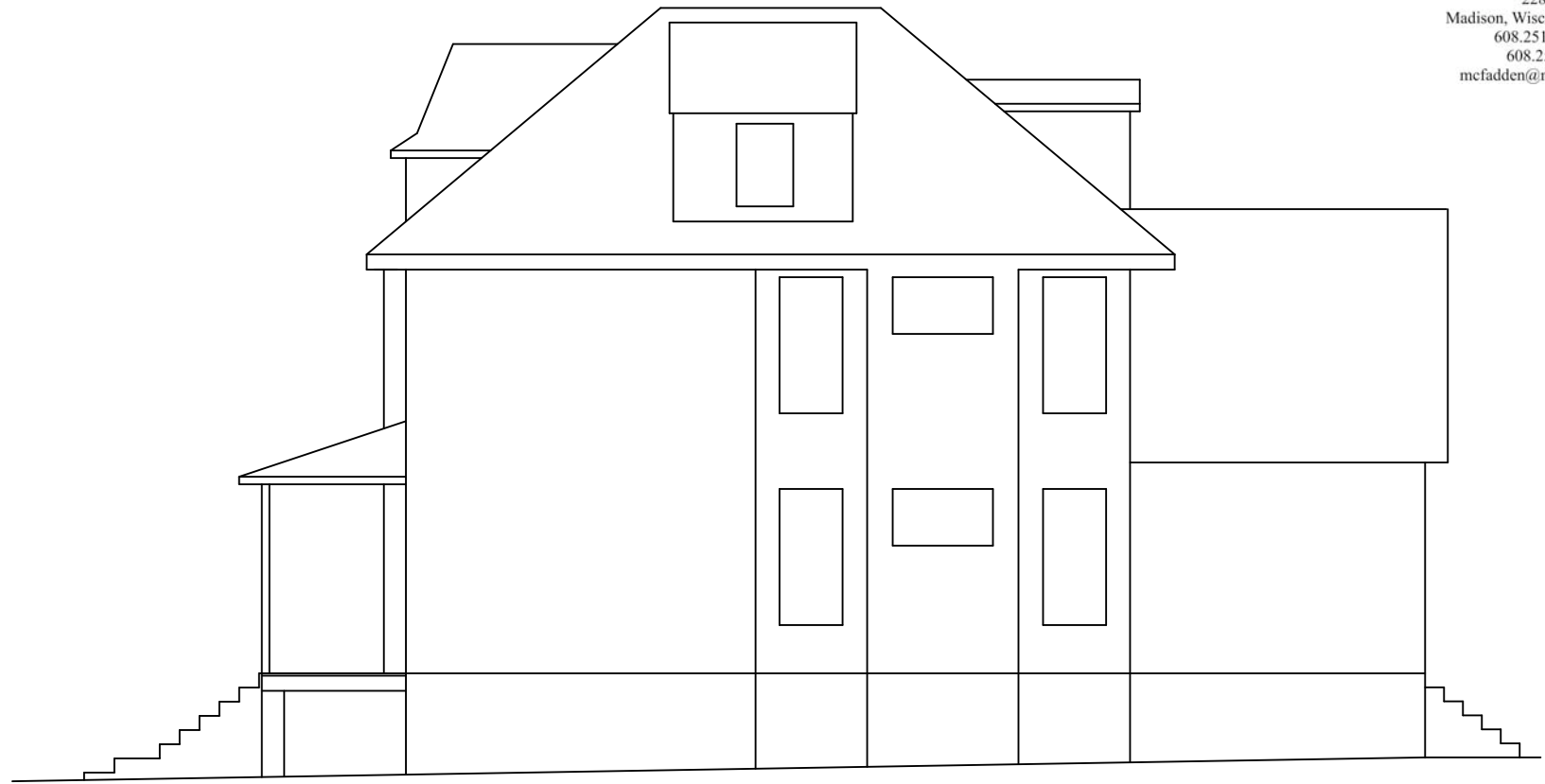


First

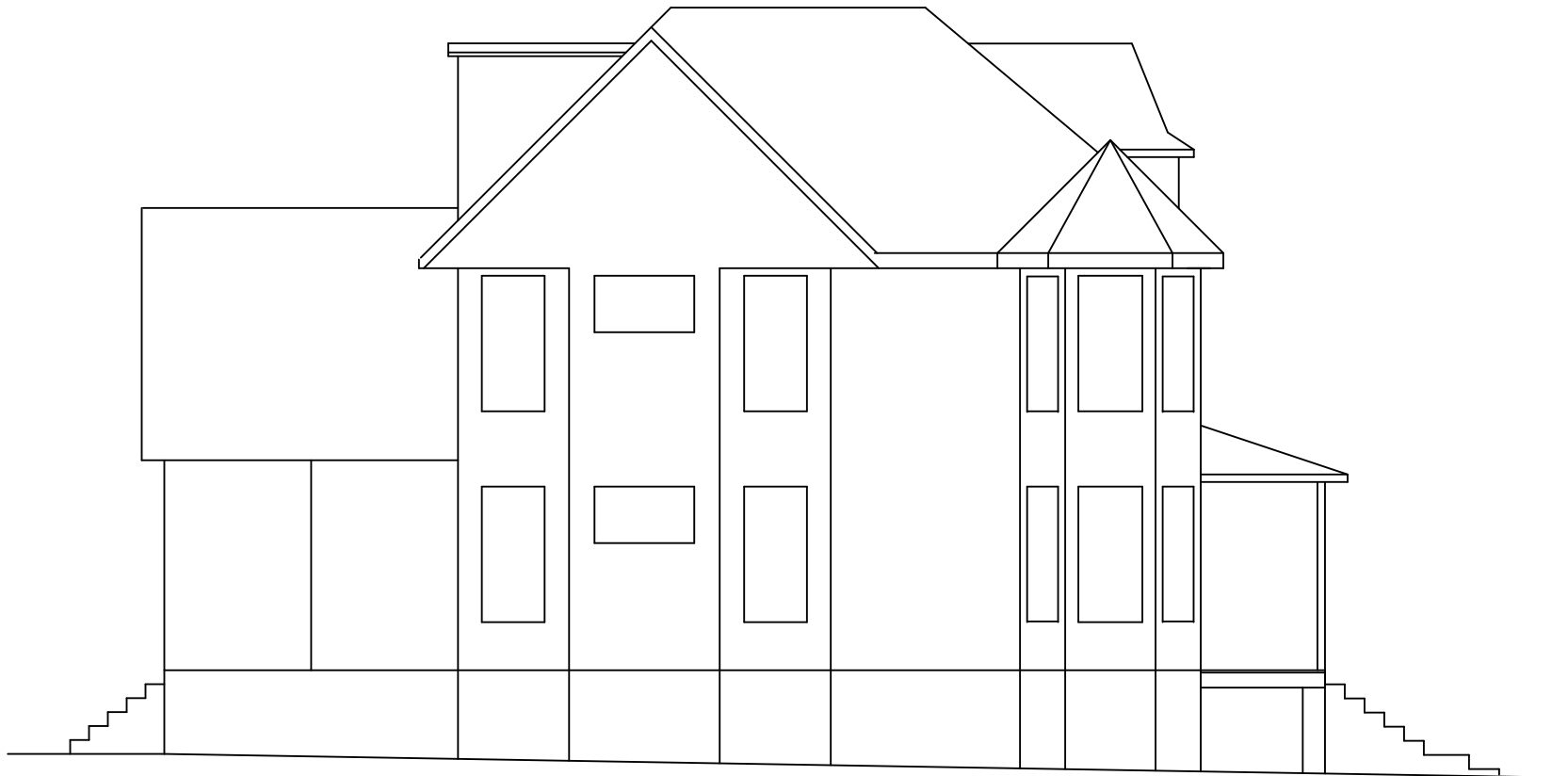




West



North

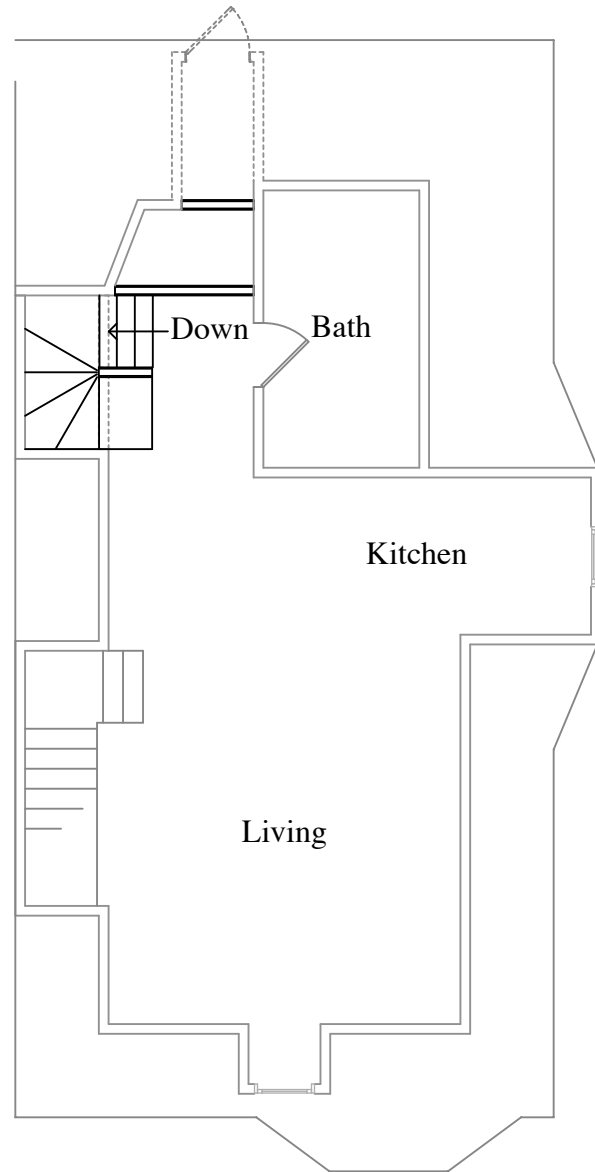


South

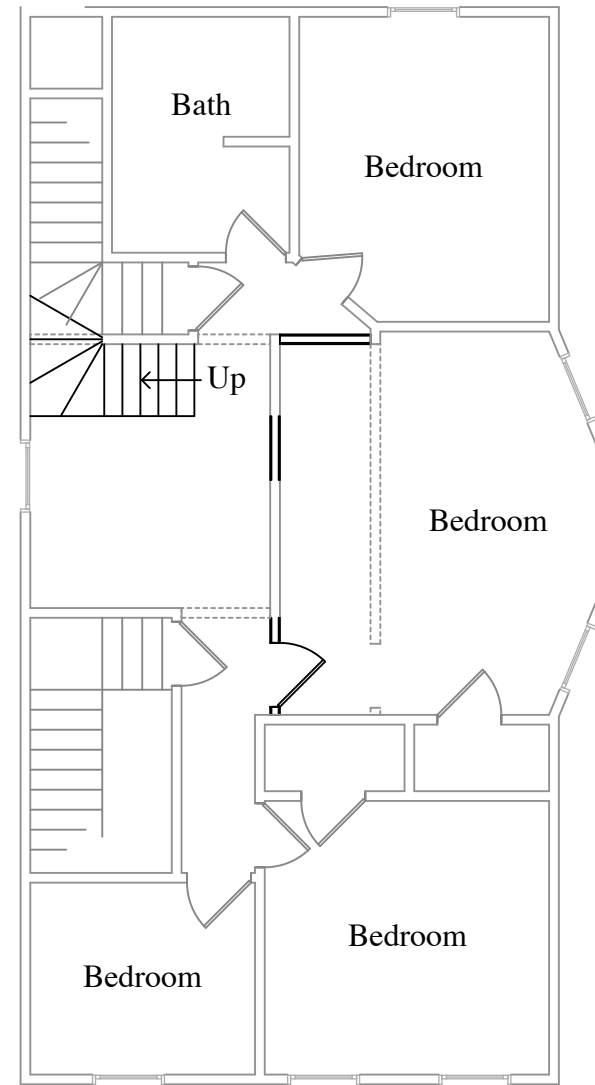


East

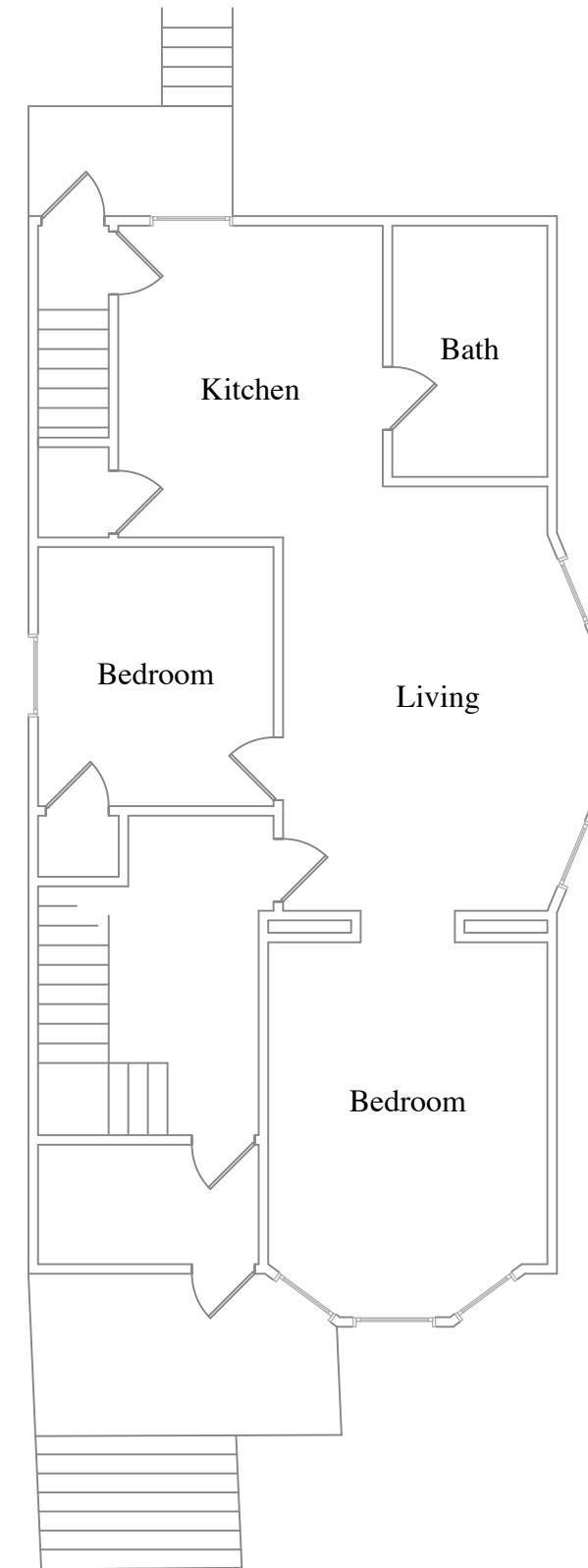
Existing Elevations @ 1/8" = 1'-0"
124 North Hancock
Madison, Wisconsin
April 24, 2008



Third Floor



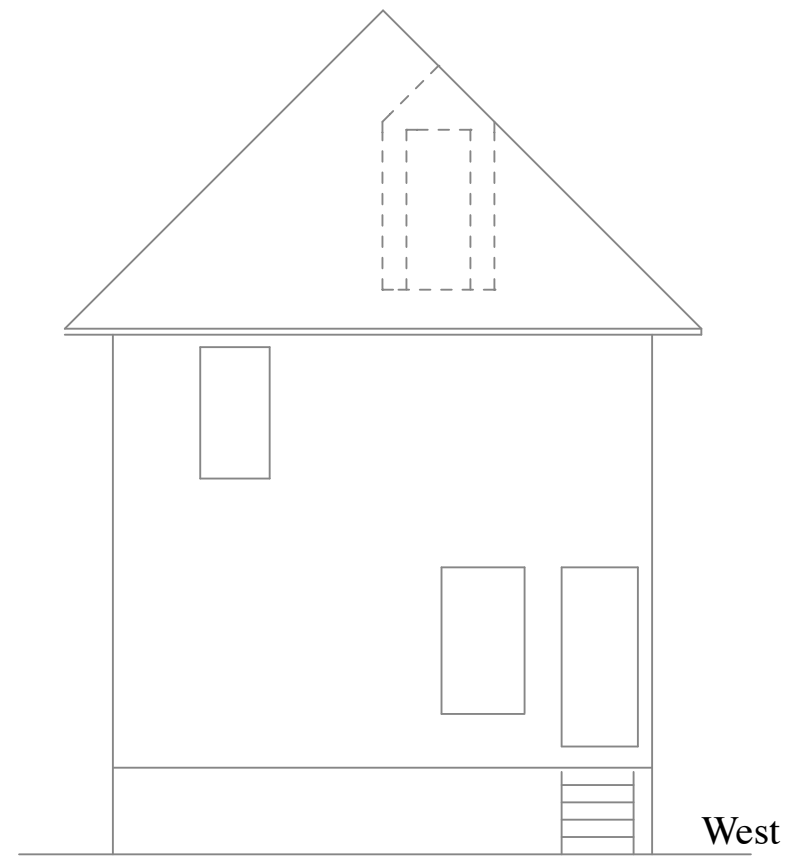
Second Floor



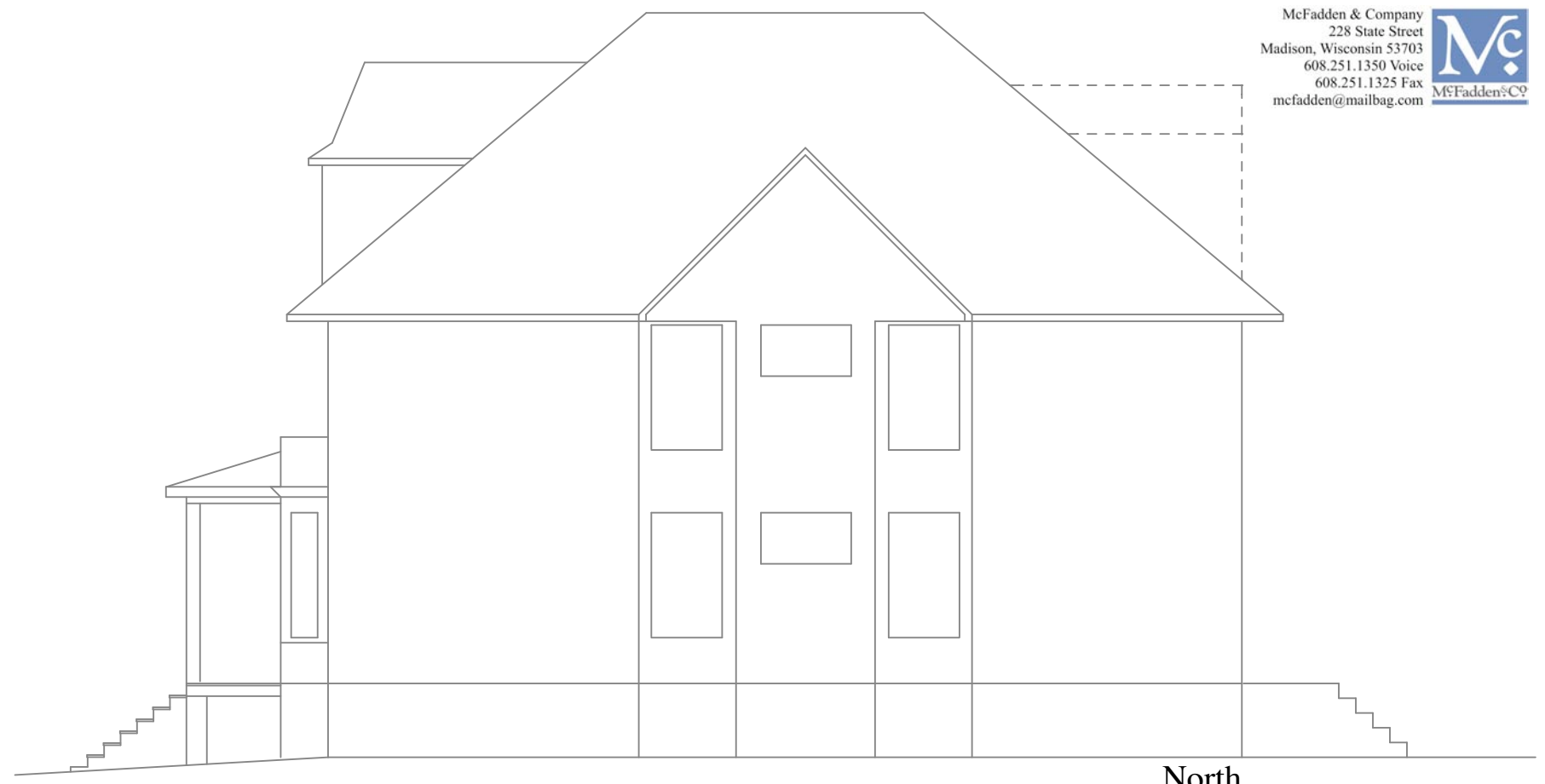
First Floor

Proposed Floor Plans @ 1/8" = 1'-0"
120 North Hancock
Madison, Wisconsin
April 24, 2008

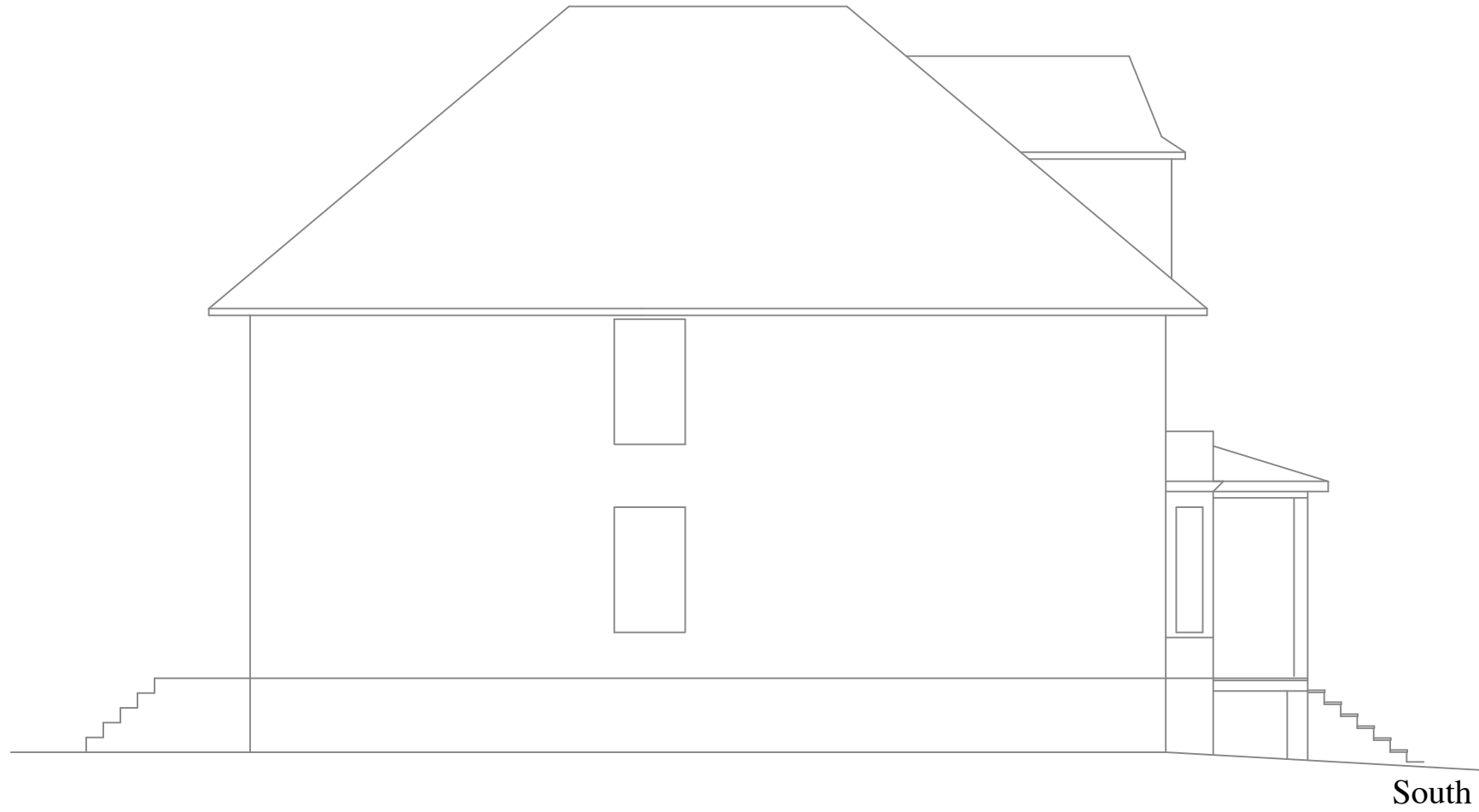




West



North

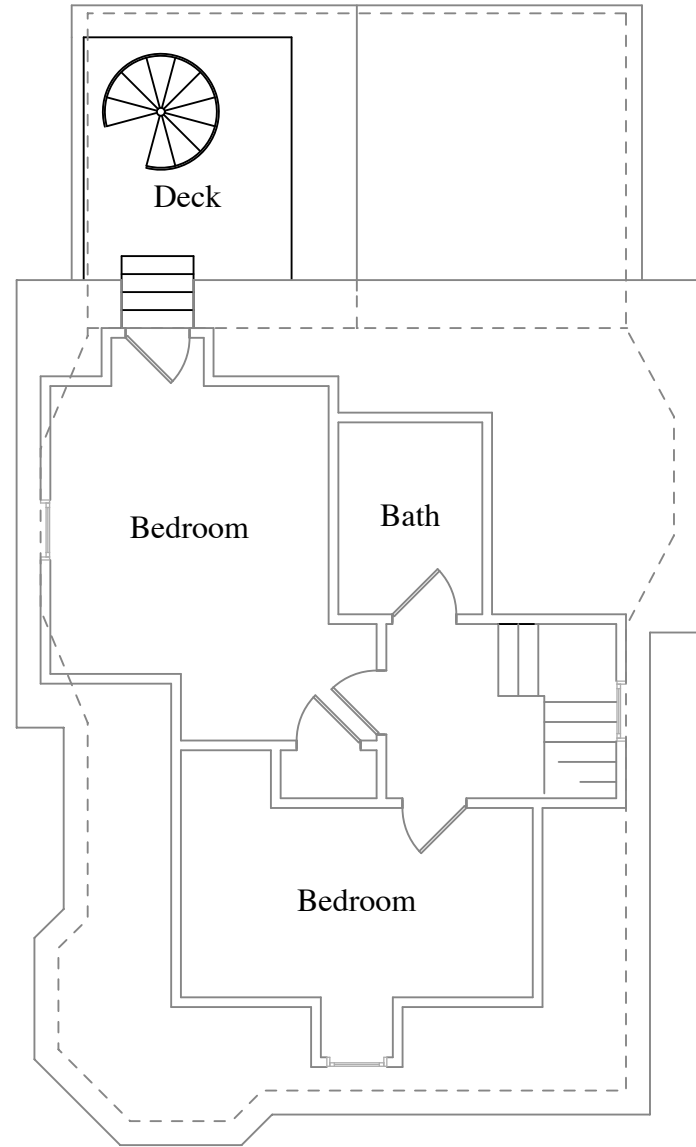


South

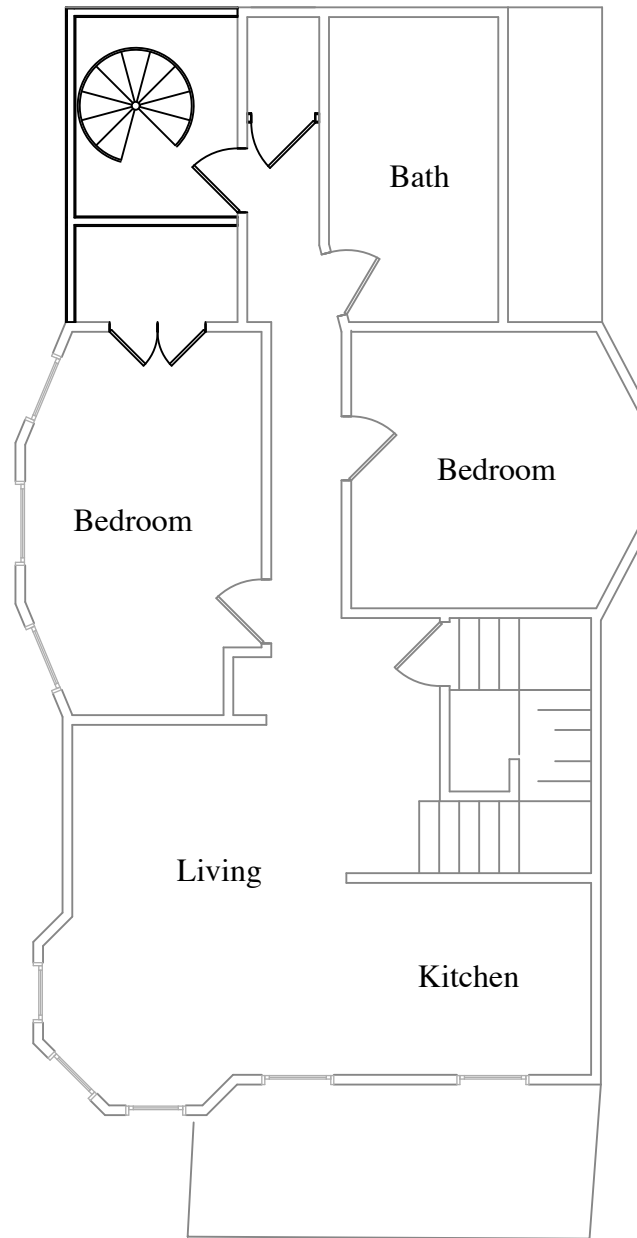


East

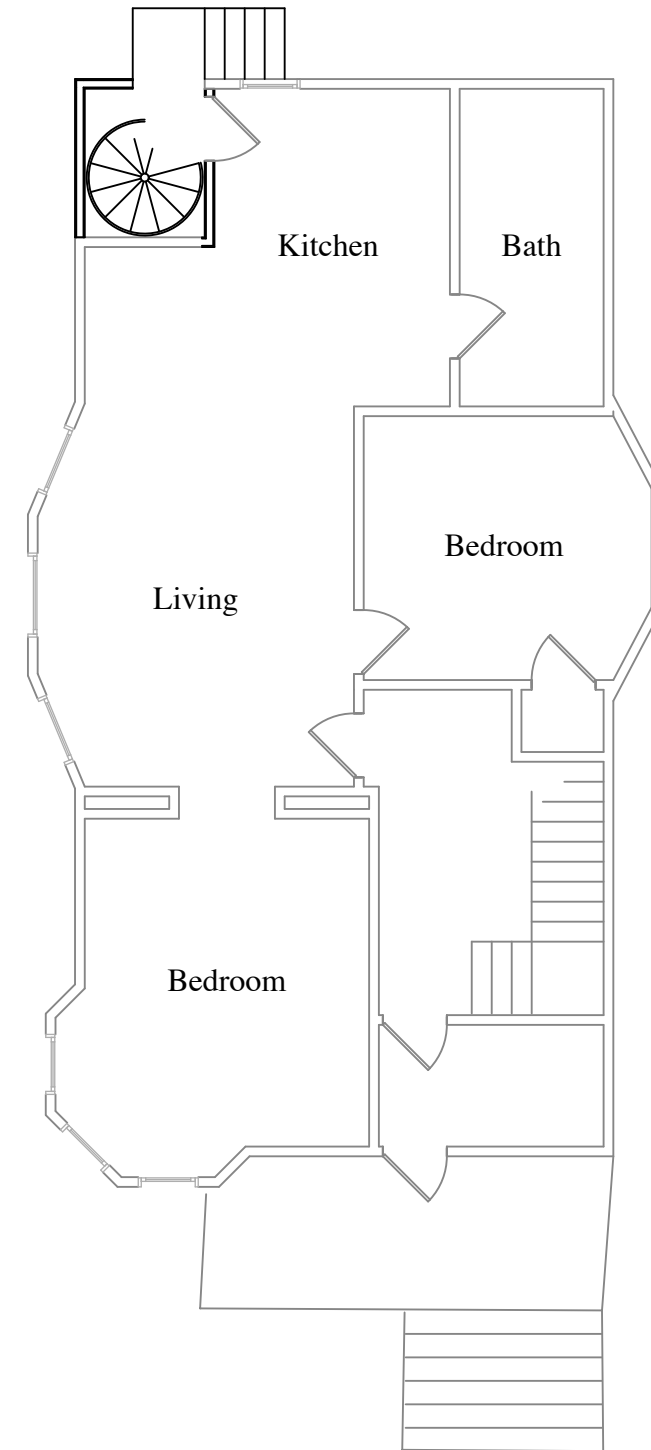
Proposed Elevations @ 1/8" = 1'-0"
124 North Hancock
Madison, Wisconsin
April 24, 2008



Third Floor



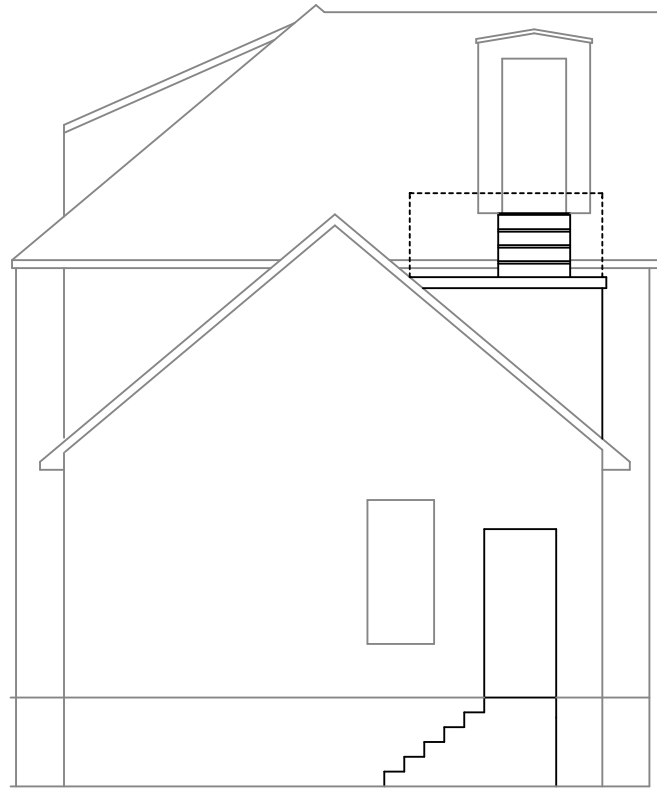
Second Floor



First Floor

Proposed Floor Plans @ 1/8" = 1'-0"
124 North Hancock
Madison, Wisconsin
April 24, 2008





West



North



South



East