

December 18, 2014 DRAFT

Potential Approaches for Philosophers' Grove area at the Top of State Street

Based upon public input, general comments, the results of the November 20, 2014 design workshop, and staff discussions over the past few months, planning staff has developed these potential approaches to address problematic issues that have been expressed about the Philosophers' Grove area at the top of State Street..

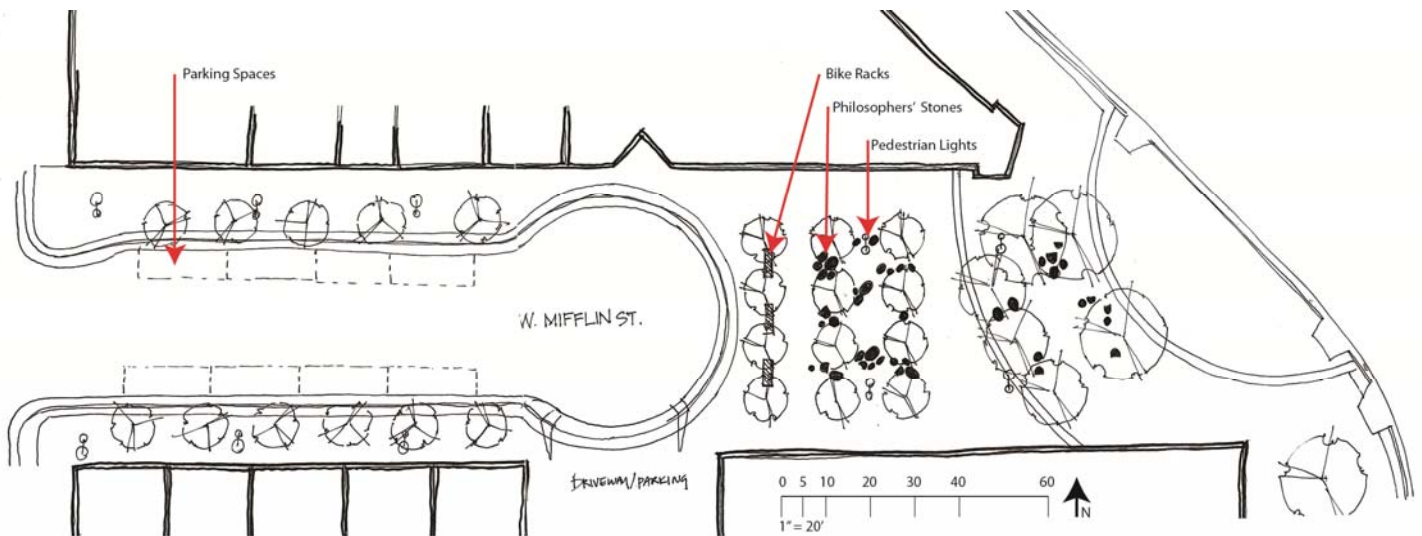
These approaches are intended to be illustrative and promote further discussion by the Downtown Coordinating Committee, the public and staff. These approaches are not mutually exclusive, nor are individual ideas under each approach. This document is meant to give a menu of ideas and directions and can lead to potential solutions moving forward.

Approach #1:

Rely on programming and services, very little physical change to space

Very few physical changes would be required in this option, although a new focus on programming and activities would be necessary.

- Minor physical changes to Philosophers' Grove could include
 - Reinstall wrapped tree lights in the spring
 - Remove bike racks at top of cul-de-sac that impede pedestrian traffic
- Programming Options could include:
 - Support efforts to create a field office for the State Street Police Officer
 - Consider behavior policy for area / posted expectations
 - Provide funding for a part time programmer to enlist and coordinative weekly activities in the Philosophers Grove and on the Stage.
 - Museum/art display/Blink projects
 - Markets (books, music, food etc.)
 - Food carts within the existing space
 - Coordinate art project in vacant storefronts
 - Fast track approvals for outdoor cafes on West Mifflin Street

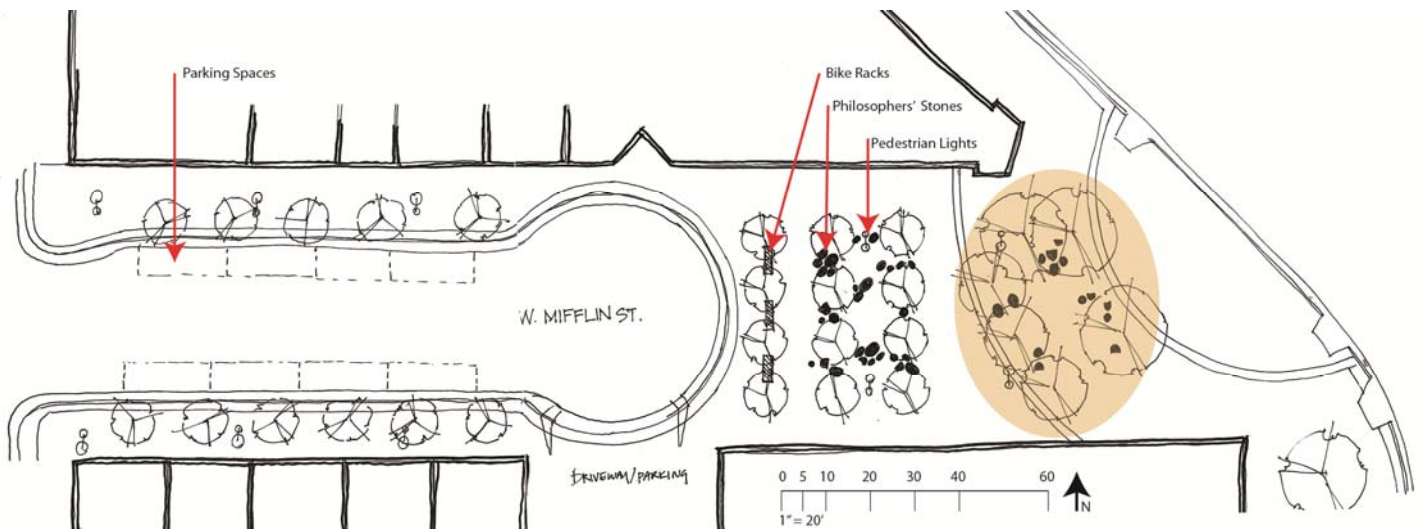


Approach #2:

Reconfigure the front (State Street End)

Reconfigure “front” area of trees and stones, leaving the gridded grove area without major physical changes.

- Physical changes could include
 - Reconfigure some/all of 6 trees and 14 stones in the front area closest to State Street.
 - Reinstall wrapped tree lights in the spring
 - Remove three bike racks at the end of the Mifflin Street cul-de-sac that impede pedestrian traffic
- Programming Options
 - Programming options as mentioned in Approach #1
 - Consider allowing food carts in front space
 - Consider a redesigned ambassador booth
 - Consider adding some movable chairs and tables

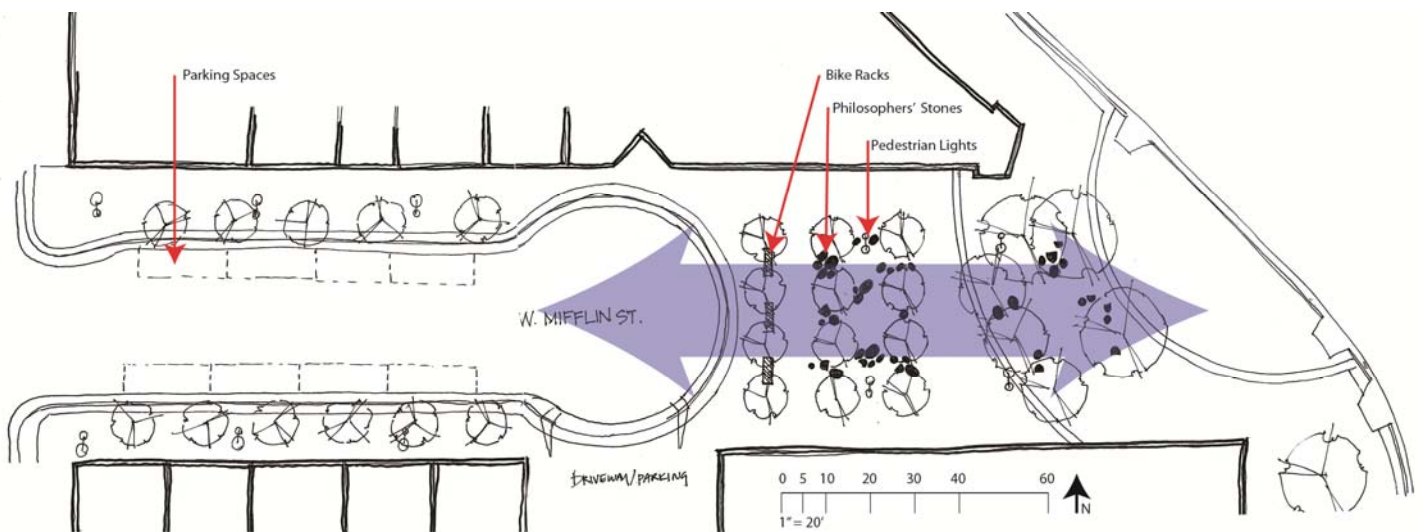


Approach #3

Reconfigure the middle

Reconfigure two center rows of trees, and reshuffle/remove some stones, allow bikes and pedestrians to mingle in the middle, similarly to the 700-800 blocks of State Street.

- Physical Changes:
 - Remove some/all 12-15 trees down the center two rows, leaving only a single row on each side.
 - Reshuffle Philosophers' Stones from middle to edge, (likely 20-30% will need to be removed entirely for this option)
 - Fix/smooth curb at the end of cul-de-sac to allows bicycles to safely enter /exit the area
Remove three bike racks at the end of the Mifflin Street cul-de-sac that impede pedestrian traffic
 - Wrap remaining trees with lights
- Programming Changes
 - Programming options as mentioned in Approach #1
 - Consider allowing up to four food carts in the new middle space
 - Consider a redesigned ambassador booth
 - Consider adding some movable chairs and tables

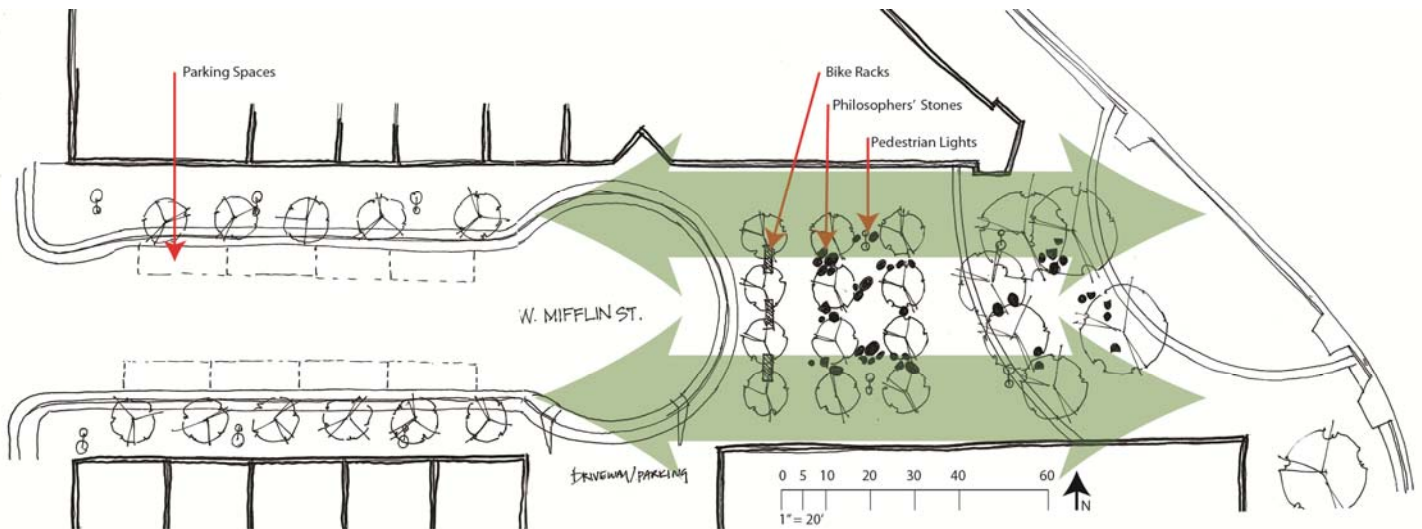


Approach #4

Reconfigure the edges

Remove/reconfigure the two outer rows of trees to widen the effective sidewalk area on each side, and concentrate trees and stones in the middle. (Likely only a few stones may need to be removed or reshuffled in this option.)

- Physical Changes:
 - Remove some/all 8-10 trees at the edges of the space, leaving a smaller grove in the middle.
 - Reshuffle Philosophers' Stones from edges to middle (likely 5-10% will need to be removed entirely for this option)
Remove three bike racks at the end of the Mifflin Street cul-de-sac that impede pedestrian traffic
 - Wrap remaining trees with lights
- Programming Changes
 - Programming options as mentioned in Approach #1
 - Consider allowing up to four food carts in the new middle space
 - Consider a redesigned ambassador booth
 - Consider adding some movable chairs and tables



Approach #5

Reconfigure entire space: longer term effort in coordination with redevelopment opportunities

Reconfigure the entire street width to better serve both existing businesses on north side of Mifflin, as well a redevelopment project on the south side of the street.

- Physical Changes could include:
 - Complete street reconfiguration (changes in vehicular/pedestrian access or loss of cul-de-sac for example)
 - Reshuffle Philosophers' Stones
 - Removal/reconfiguration of trees
- Programming Changes:
 - Programming options as mentioned in Approach #1
 - Other potential ideas depending upon final design of physical space

