



# MADISON PARKS

## Planning and Development Section Report

Board of Park Commissioners

July 8, 2026

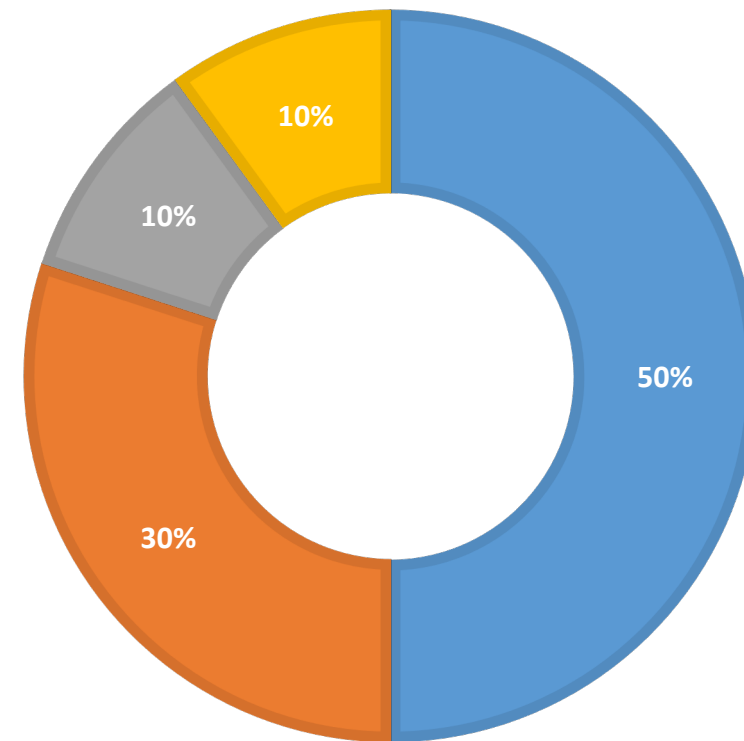
Presented by Adam Kaniewski

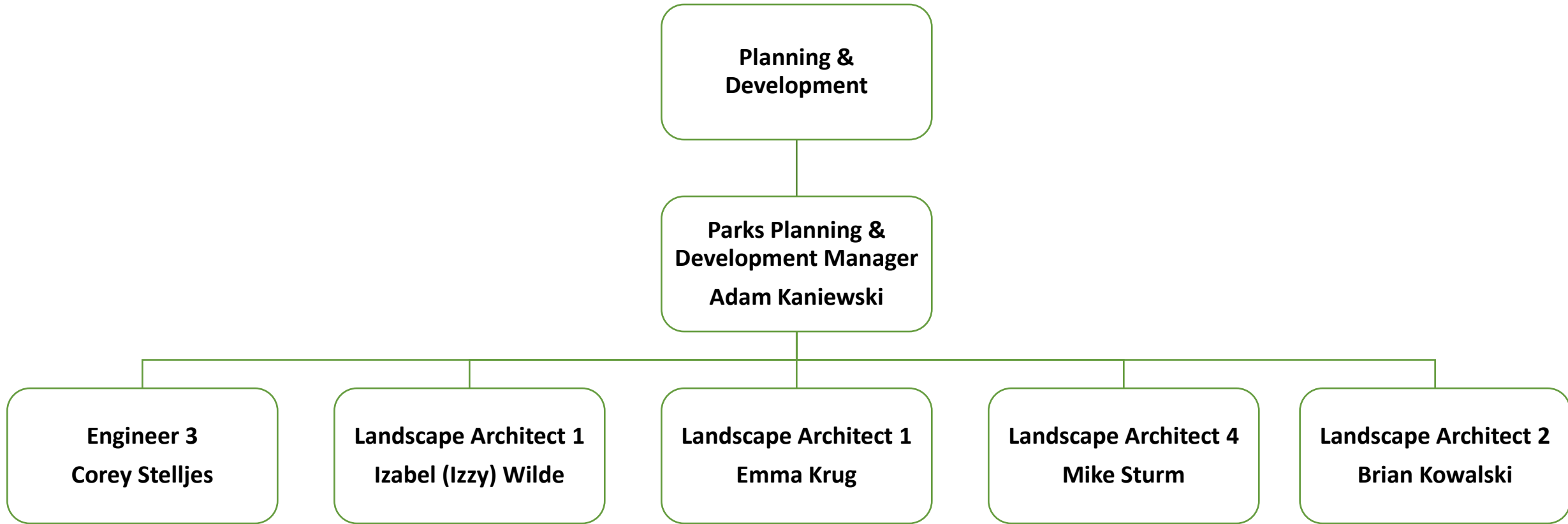
# P&D Services

- Capital Improvement Plan and implementation
- Park Planning
  - Park Development Plans and Master Plans
  - Park and Open Space Plan
  - Area Plan assistance
  - Innovation
- Development Review – Impact Fees
  - Temporary Land Use Permits
  - Utility Easements
- Data Inventory Maintenance

## PLANNING AND DEVELOPMENT SERVICES

- Capital Improvement Plan
- Park Planning
- Development Review - Impact Fees
- Data Inventory Maintenance





## General Updates



Staff discuss the Odana Hills Golf Course Renovation and Park Improvements with the public at an Open House on May 7, 2026

New staff passing 1 year mark

Two AASPIRE Interns in 2026

Continuing to “catch-up” on capital projects after staffing transition in 2025

2026 Construction projects underway, some already completed

Planning and design underway for projects with anticipated 2027 construction

Staff attending various Parks Alive events

Recent influx of memorial bench requests

# Park Planning

- Park and Open Space Plan
  - Implementation progress reporting method approved by Long Range Planning Subcommittee
- Trust for Public Land ParkScore
  - Ranked 21st of 100 largest US Cities
  - Points (out of 100)
    - Access: 97
    - Amenities: 89
    - Equity: 61
    - Acreage: 53
    - Investment: 34



# Park Planning



## Park Master Plans

Midtown Commons Park (Adopted December 2025)  
Elver Park (Anticipate start in late 2026)



## Park Development Plans (Neighborhood and Mini Parks)

Newville (Kenneth) Park (Adopted January 2026)  
Woods Farm Park (Adopted January 2026)  
Canter Park (Adopted January 2026)  
Southwest Area Parks (In-progress)  
Southeast Area Parks (In-progress)  
Hartmeyer-Roth Park (In-progress)



## City Planning Support

Southwest Area Plan  
Southeast Area Plan  
Downtown Area Plan

# Park Planning – Inter-Agency Coordination

- Zook Park Path Connection (Engineering)
- Park Court – Lake Edge Park Parking (Engineering)
- Elmside Boulevard Reconstruction Coordination (Elmside Circle Park)(Engineering)
- Carpenter-Ridgeway Singletrack CDBG Project (Planning, Community Development)
- Northeast Area Plan CDBG Projects (Planning, Community Development)
- Warner Park Lagoon Dredging (Engineering-Stormwater)
- Dane County Landfill Coordination (Yahara Hills Golf Course)
- Watershed Studies (Engineering-Stormwater)
- John Nolen Drive Re-construction Coordination (Engineering)
- Starkweather Park – Path Connection (Engineering)

# Park Planning – Coming Soon

- Upcoming in 2026
  - Elver Park Master Plan
  - Starkweather Park Development Plan
  - North Area Plan (Projected late 2026 kick-off)
  - Near West Area Plan (Projected late 2026 kick-off)

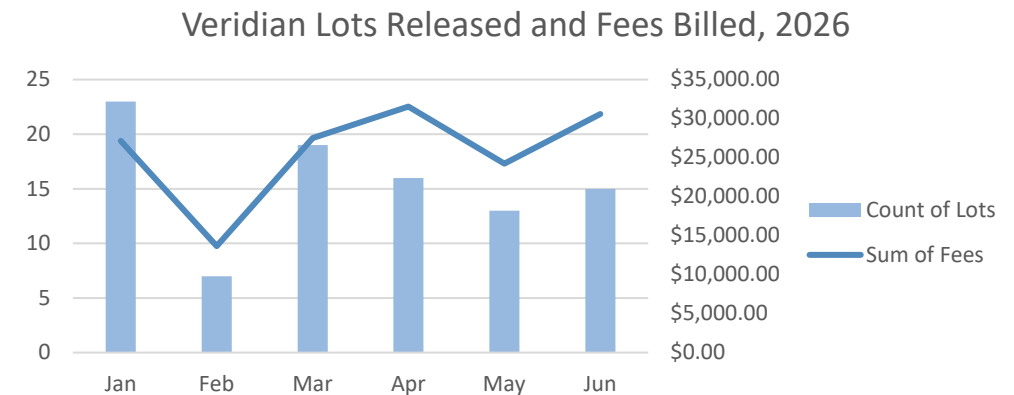
# Development Review – Impact Fees

- Completed fee updates on January 1
- Through 6/22/2026– Reviewed 114 development project submittals
- Through 6/22/2026 – 131 Park Impact Fee Payments Processed (93 Veridian Single Family Lots)
- Coordinated 1 Letter of Credit and 3 Bonds for Impact Fee Deferrals

Park-Infrastructure Impact Fees	2026 Rate
Single Family/Duplex	\$2,117.42
Multi-Family or ADU (Accessory Dwelling Unit)	\$1,437.62
Large Multi-Family (4+ bedrooms)	\$2,790.26
Age Restricted Multi-Family	\$1,122.79
Group Living Quarters	\$803.78

Park-Land Impact Fees	Base Square Footage per Ordinance Dec. 2016	2026 Rate
Single Family/Duplex	1,081	\$5,286.09
Multi-Family or ADU	734	\$3,589.26
Large Multi-Family (4+ bedrooms)	1,424	\$6,963.36
Age Restricted Multi-Family	573	\$2,801.97
Group Living Quarters	410	\$2,004.90

Based on the city-wide average assessed value of land of \$4.89/SF as of January 1, 2026.



- Needs Assessment Update work has begun
  - Consultant: TischlerBise
  - Currently in data inventory phase prior to analysis

# Park Inventory Data

- Path Pavement Ratings
  - 10.2 Miles of Paved Paths
  - Next year: Parking Lots
  - 2027: Basketball Courts
- Drinking Fountain Inventory
- Stormwater Management Basin Yearly Inspections
  - Yearly inspections and reports required by Professional Engineer
  - 30 basins inspected yearly, typically during the Fall
    - New basins are constructed yearly as part of Capital projects

# Capital Improvement Plan and Implementation

## 2026 Capital Budget

2026 CIP by Expenditure Type

	2026	2027	2028	2029	2030	2031
Building	1,700,000	150,000	-	2,500,000	-	-
Land	300,000	300,000	300,000	300,000	300,000	300,000
Land Improvements	22,780,000	11,055,000	11,890,000	8,400,000	9,820,000	9,405,000
Machinery and Equipment	375,000	425,000	425,000	425,000	425,000	425,000
	<b>\$ 25,155,000</b>	<b>\$ 11,930,000</b>	<b>\$ 12,615,000</b>	<b>\$ 11,625,000</b>	<b>\$ 10,545,000</b>	<b>\$ 10,130,000</b>

- 2027 Capital Budget Request submitted in April to Mayor’s Office
  - Review and evaluate prioritization of existing projects included in 2026 CIP
  - Prepare and evaluate prioritization of new projects, including new 2032 projects
    - New projects include improvements identified in Master Plans and Park Development Plans through 2025 park planning efforts
    - New projects include major maintenance needs identified in 2025

# Capital Improvement Plan - Grants

- Grant Applications
  - Warner Park Southeast Recreation Area
    - Federal Land & Water Conservation Program
    - Tentative award of ~~\$369,691~~ increased to \$496,782
  - Olbrich Park – North Parcel Development
    - Wisconsin Economic Development Corporation Brownfields Grant
      - \$250,000 grant application in-progress
  - County Grove Park Singletrack
    - Dane County PARC & Ride Grant
    - Awarded grant of \$187,500 in 2024, project pending
  - Worthington Park Futsal Court
    - The Soccer Fund Grant - \$10,000
    - Wisconsin Department of Administration Local Projects Grant
      - Applied for \$450,000 grant, was not awarded
  - Warner Park Pickleball Courts
    - Wisconsin Department of Administration Local Projects Grant
      - Applied for \$450,000 grant, was not awarded

# Playground Replacement Program

- 192 Playgrounds in the system
- Typical Post and Platform Playground Lifespan 25-30 years
- Replace 5-7 per year
- 0 replacements in 2025 due to staffing
- 20 scheduled 2026-2027

## 2026 Playgrounds – Set 1 Completion: August 2026

- Portland Park
- Ontario Park
- Sandburg Park
- Kennedy Park
- Skyview Park

## 2026 Playgrounds – Set 2 Completion: June 2027

- James Madison Park
- Marshall Park
- Eastmorland Park
- Orton Park
- Newberry Park
- Heifetz Park
- Cypress Spray Park

## 2027 Playgrounds

Completion: October 2027

- Quaker Park
- Goodman Park
- Odana Hills Park
- Glenwood Park
- Westhaven Trails Park
- Warner Park – Monterey
- Olin Park
- Reindahl Park Accessible

# 2026 Playgrounds

## Set 1 - Construction



Kennedy Park Playground



Sandburg Park Playground



## Set 2 - Design

Heifetz Park Playground Design



Marshall Park Playground Design



James Madison Park Playground Design



Age Range: 2-5

Three-bay swing

Age Range: 5-12

# Playgrounds

## Reindahl Accessible Playground

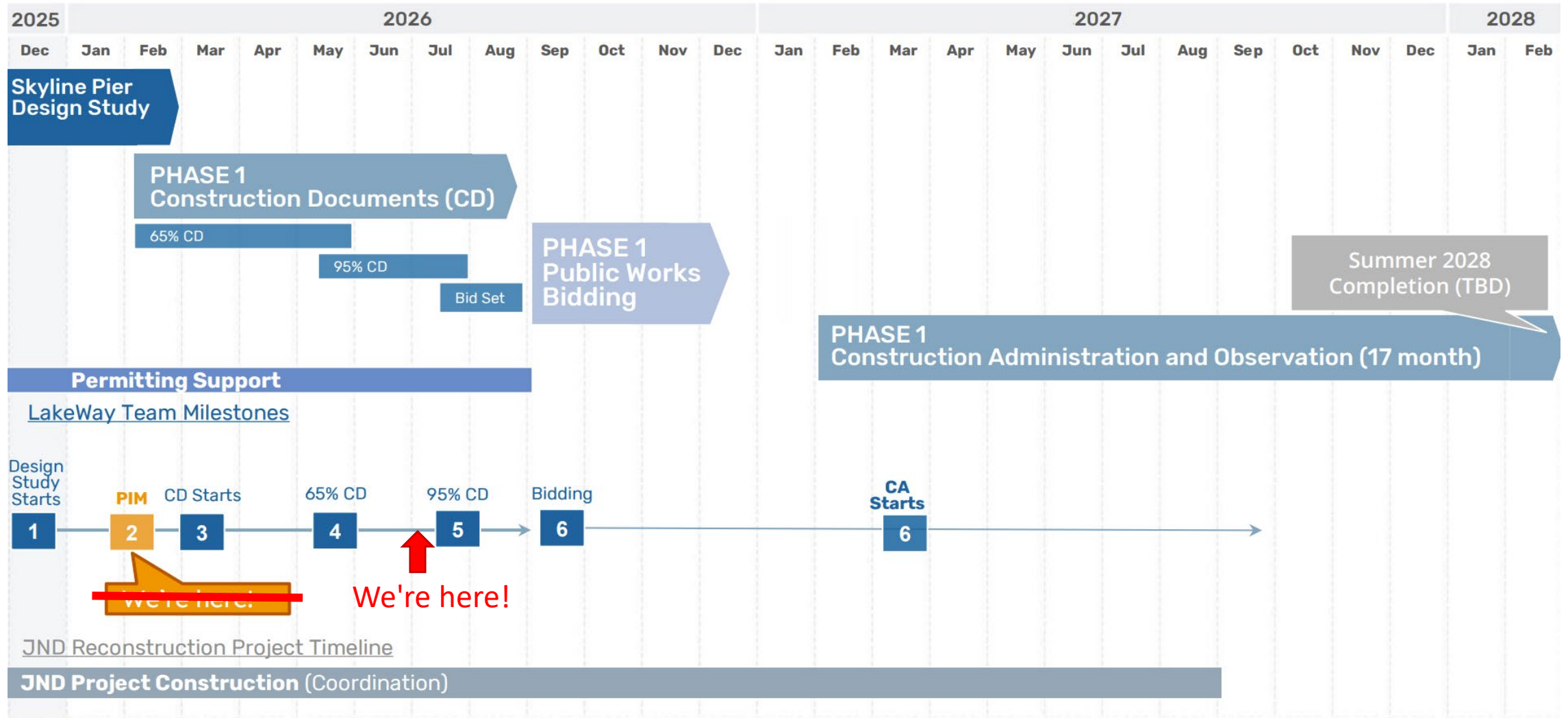


# Cypress Spray Park

- Working with consultant Parkitecture+Planning
- Collaboration with Lincoln Elementary and Centro Hispano
- Next steps: revise design with Parkitecture
- Bidding Process :  
July – October 2026
- Construction:  
Fall 2026 – Spring 2027



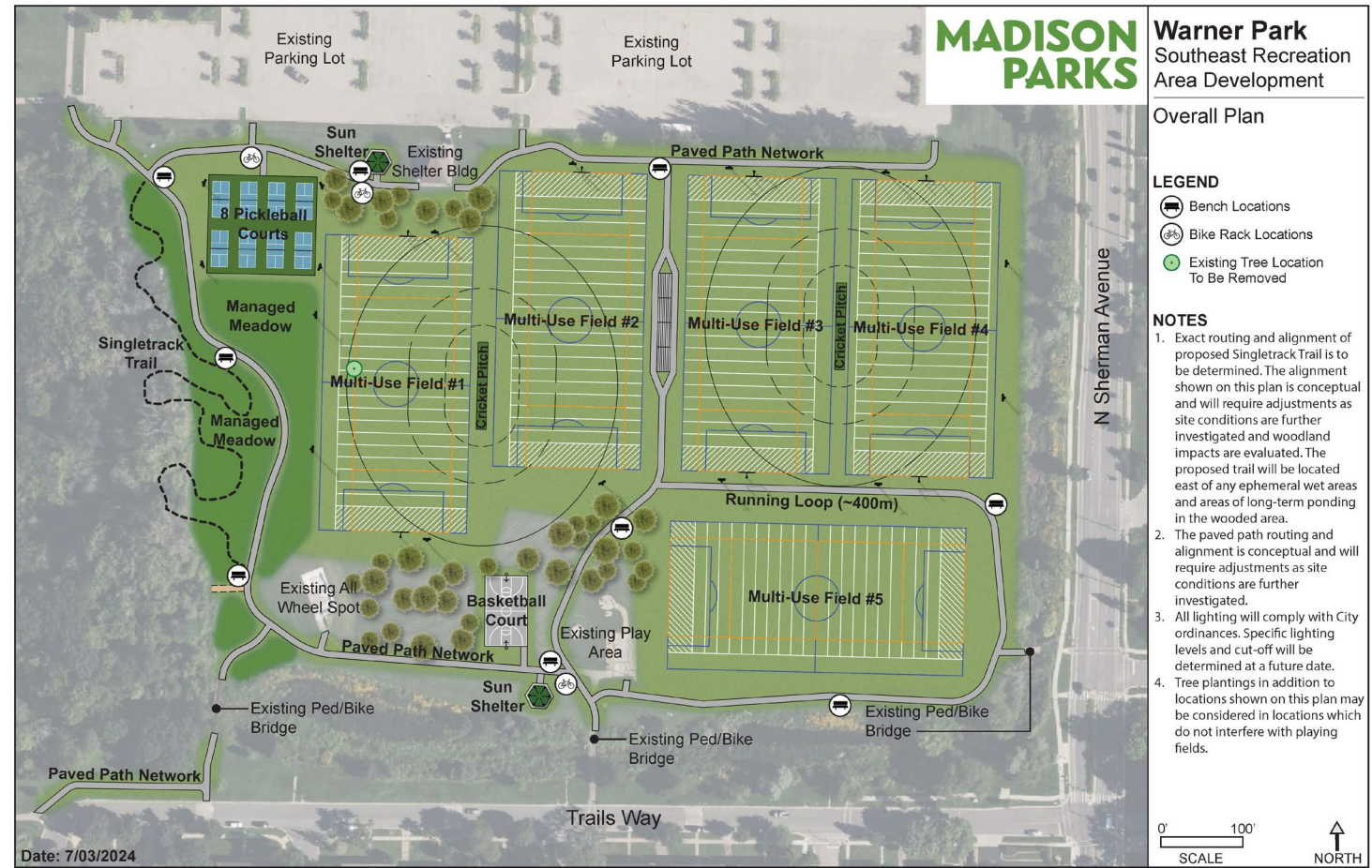
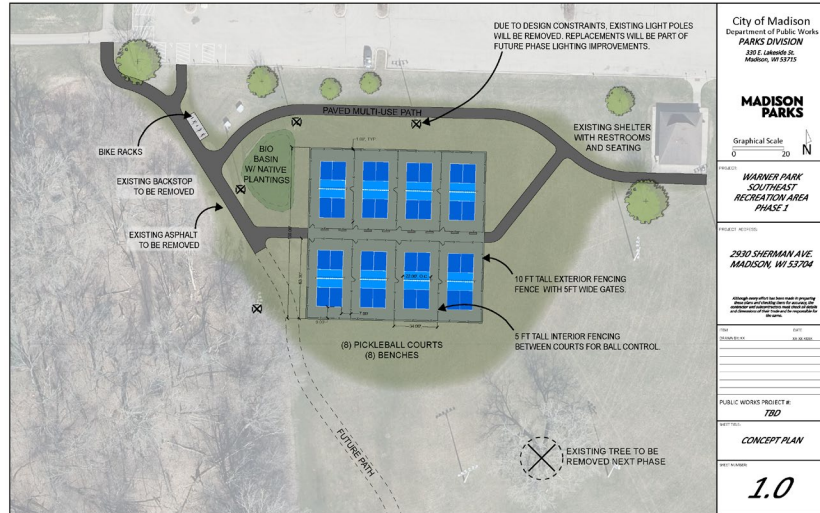
## Phase 1 Design Milestones



# Warner Park Southeast Recreation Area

Phase 1 – Pickleball Courts – Under Construction  
 Expected Completion by September 4

Phase 2 – Field Grading, Lighting, Paths – Design Development  
 Consultant: KL Engineering



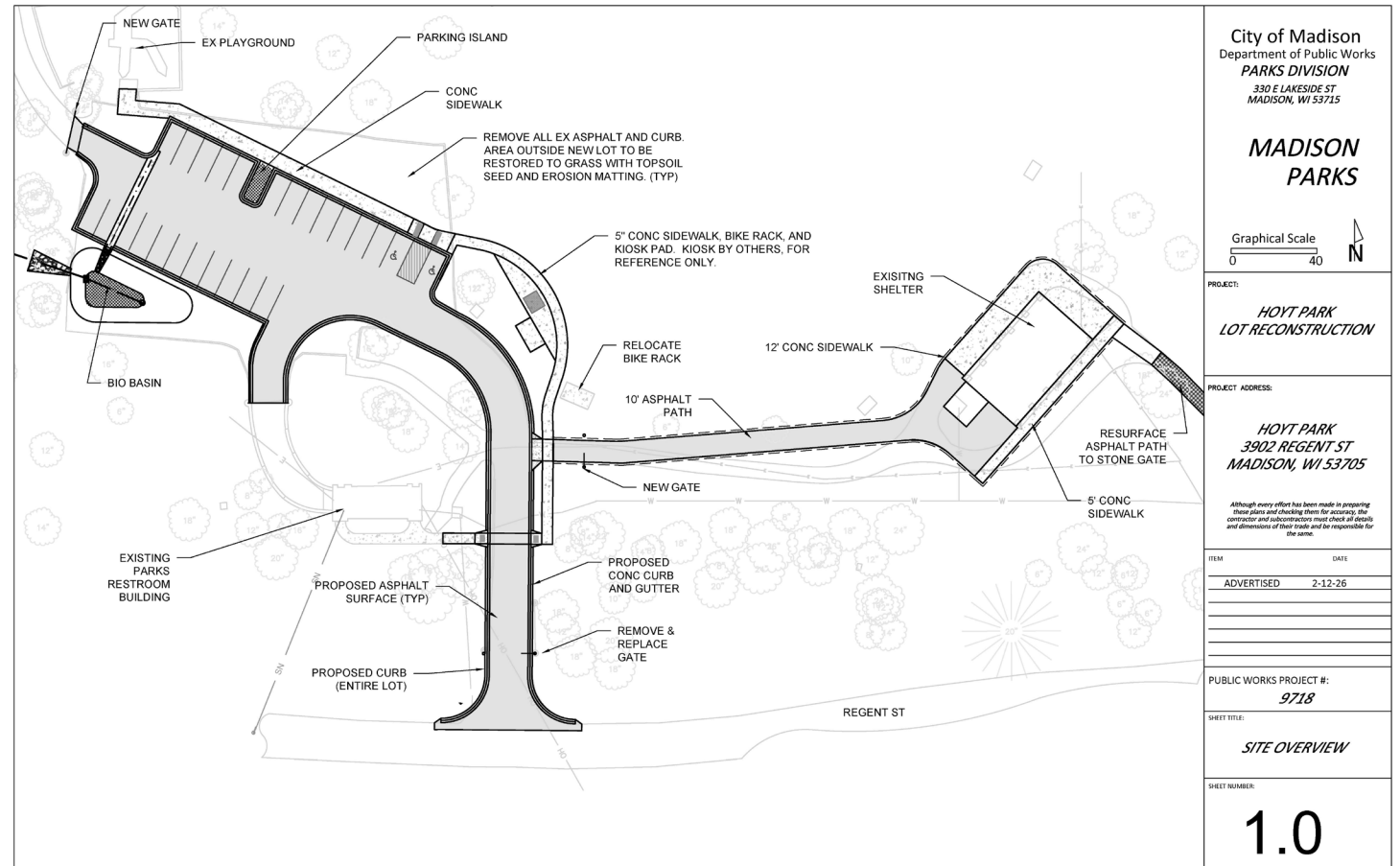
# Worthington Park Futsal Court

Expected Completion by September 4

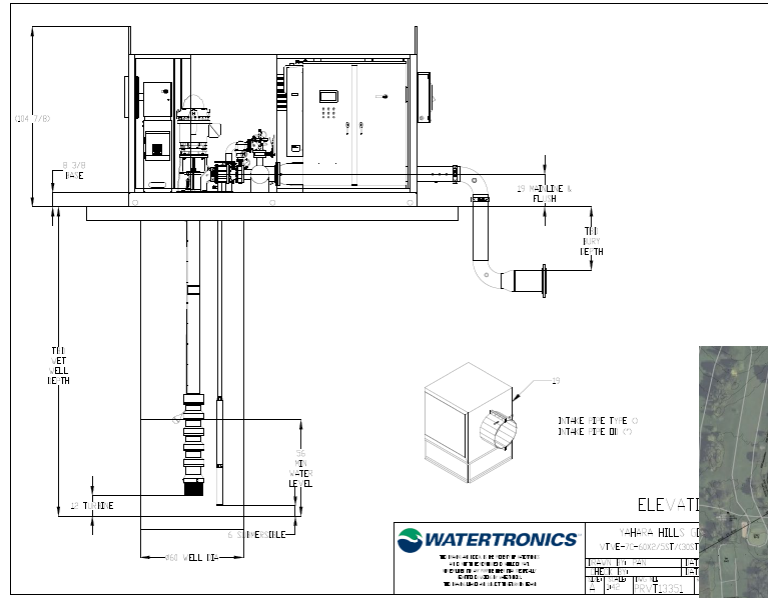


# Hoyt Park Parking Lot

- Expect construction to begin July 6
- Expected completion date August 30
- Reduced parking lot footprint
- ADA compliant parking stalls and access to restrooms
- New stormwater management basins
- Maintaining all existing trees

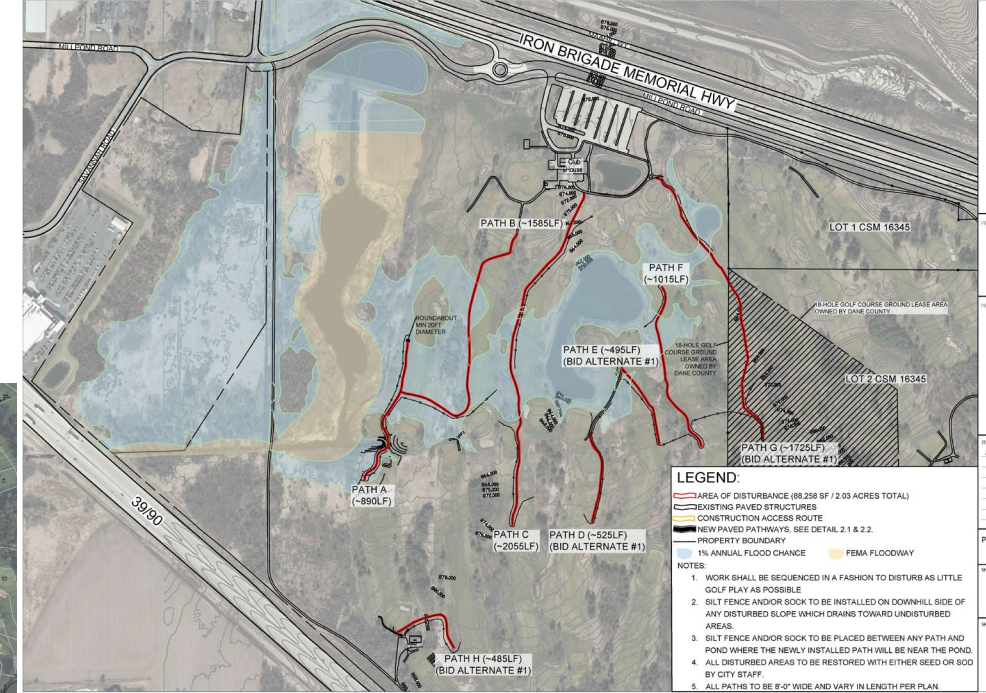


# Golf Program Projects – Yahara Hills



**Irrigation Well  
Transfer Pipe  
Completed July 2026**

**New Pump Station and  
Irrigation Improvements  
Completed June 2026**



City of Madison  
Department of Public Works  
**PARKS DIVISION**  
330 E Lakeside ST.  
Madison, WI 53725

**MADISON  
PARKS**

Graphical Scale  
0 400'

PROJECT:  
**YAHARA HILLS GOLF COURSE PATH IMPROVEMENTS**

PROJECT ADDRESS:  
7051 MILLPOND ROAD  
MADISON, WI 53728

DATE:  
05/21/2026

PUBLIC WORKS PROJECT #:  
**9709**

SHEET TITLE:  
**OVERALL SITE PLAN**

SHEET NUMBER:  
**1.1**

**New Cart Paths  
Awarded Bid  
Completion – Fall 2026**



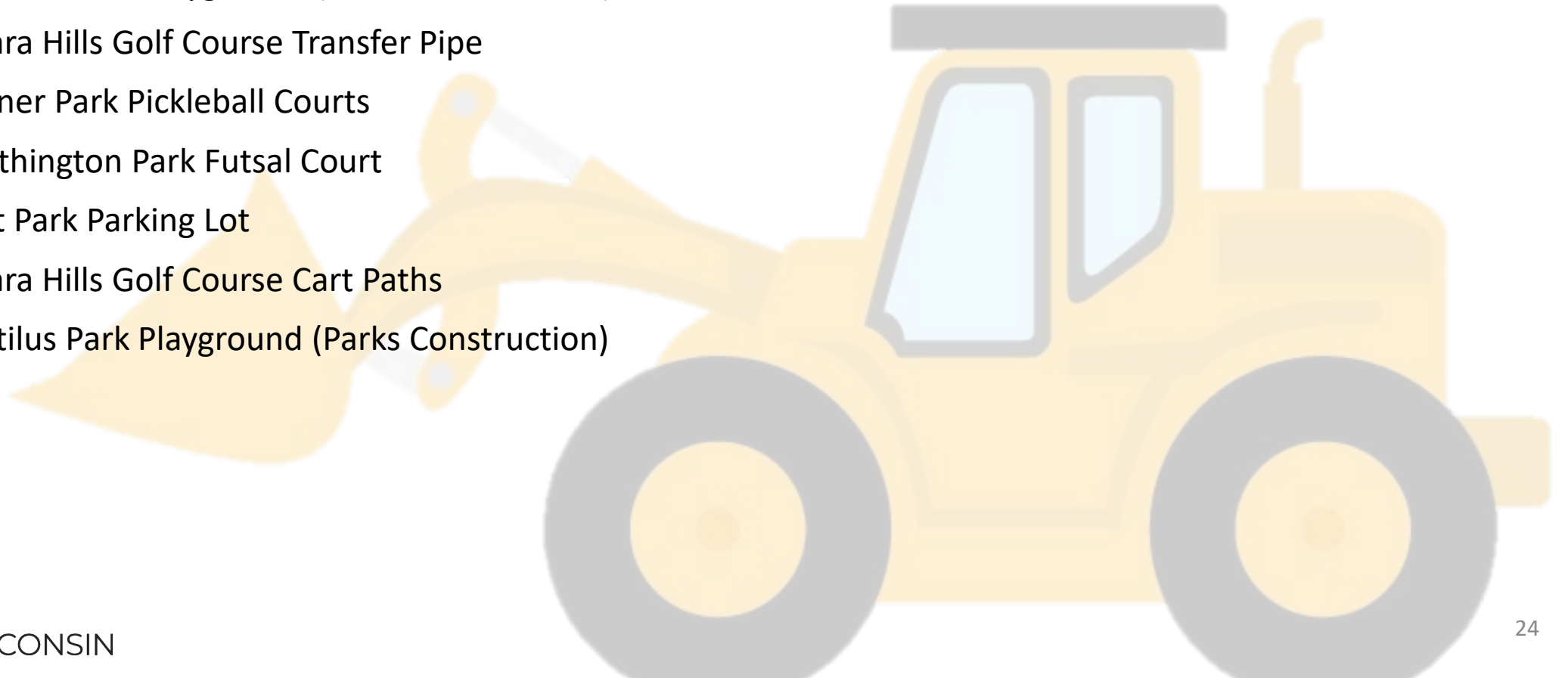
# Projects Completed

- Breese Stevens Field Synthetic Turf Replacement
  - Complete on-time by May 1 for use in 2026
- Beach Accessibility Projects (Tenney, Esther, Warner)
- 346 E Lakeside St. House Demolition
- Wingra Park Playground Spinner
- Warner Park Scoreboard Replacement
- Warner Beach Parking Lot Lighting



# Projects In-Progress – Construction

- 2026 Playgrounds – Set 1 (Kennedy, Sandburg, Ontario, Skyview)
- Portland Park Playground (Parks Construction)
- Yahara Hills Golf Course Transfer Pipe
- Warner Park Pickleball Courts
- Worthington Park Futsal Court
- Hoyt Park Parking Lot
- Yahara Hills Golf Course Cart Paths
- Nautilus Park Playground (Parks Construction)



# Capital Projects In-Progress – Bidding

- **Awarded Bids**

- Hoyt Park Parking Lot
  - \$381,188.68
- Warner Park Pickleball and Worthington Park Futsal
  - \$796,517.59
- Yahara Hills Golf Course Transfer Pipe
  - \$382,000.00
- Yahara Hills Golf Course Cart Paths
  - \$722,179.78
- James Madison Park – Lincoln School Retaining Wall
  - \$197,303.15
- Kenneth Newville Park Redevelopment
  - \$50,952.80

- **Anticipated Bidding 2026**

- Country Grove Park Singletrack (received no bids)
- Cypress Spray Park
- Sport Court Resurfacing 2026
- Madison LakeWay – Phase 1



# Projects In-Progress – Design and Public Engagement

- Design Phase

- **Madison LakeWay**
- Manchester Park Path and Basketball Court
- Door Creek Park Nice Rink Lighting
- 2026 Playground Replacement – Set 2 (Marshall, Eastmorland, Newberry, Heifitz, Orton, James Madison)
- Cypress Spray Park Re-design
- Olbrich Park North Parcel (Garver Feed Mill)
- Reindahl Park Accessible Playground
- Carpenter-Ridgeway Singletrack
- Warner Park Southeast Recreation Area – Phase 2
- Garner Park Parking Lot and Pickleball Courts reconstruction
- Marshall Park Boat Launch Ramp reconstruction and Dredging
- Rennebohm Park – New Parking Lot
- Owen Conservation Park Driveway reconstruction
- Odana Hills Golf Course Renovation
- Odana Hills East Park Renovation
- Disc Golf erosion control projects

- Project Planning Phase

- Sun Shelter Replacements (Haen Family, Paunack)
- Brittingham Shelter Replacement (Engineering-Facilities Project Management)
- Normal Hall, Olin Park, Improvements (Engineering-Facilities Project Management)
- Vilas Park Geomorphology Study
- Edgewood Pleasure Drive Fence Removal and Replacement
- Recreational Biking Inventory, Operations, and Maintenance Manual
- Warner Boat Launch Building evaluation



Questions?