

AS1 LED

LED Area Luminaire



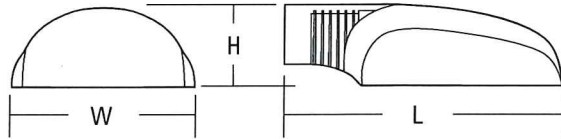
DESIGNLIGHTS
CONSORTIUM



AERIS

Specifications

EPA:	0.7 ft ² (0.07 m ²)
Length:	22-1/4" (56.4 cm)
Width:	13" (33.0 cm)
Height:	6-3/8" (15.9 cm)
Weight (max):	33 lbs (14.8 kg)



Catalog
Number

Notes
CAPITOL VIEW AT OAK PARK

Type
A - EXISTING FIXTURE

Introduction

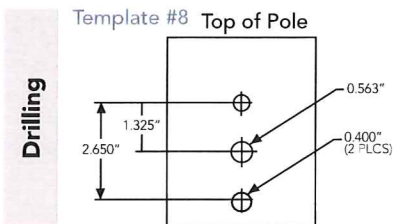
The Aeris™ family combines sleek, fluid forms and crisp edges into a striking architectural aesthetic that can be echoed throughout entire sites.

The AS1 LED integrates the latest LED technology with the designer aesthetic of the Aeris™ family for stylish, high-performance illumination that lasts. The AS1 LED is ideal for replacing 100-250W metal halide in area lighting applications with typical energy savings of 65% and expected service life of over 100,000 hours.

Ordering Information

EXAMPLE: AS1 LED 1 63B350/40K SR5 MVOLT SPA DDBXD

AS1 LED	Series	Light Engines	Performance Package ¹	Distribution	Voltage	Mounting	Options	Finish (required)
AS1 LED	1	One engine (49 or 63 LEDs)	350 mA options: 49B350/30K 3000K 49B350/40K 4000K 49B350/50K 5000K 63B350/30K 3000K 63B350/40K 4000K 63B350/50K 5000K 530 mA options: 63B530/30K 3000K 63B530/40K 4000K 63B530/50K 5000K	SR2 Type II SR3 Type III SR4 Type IV SR5 Type V	MVOLT ² 120 ² 208 ² 240 ² 277 ² 347 480	Shipped included SPA Square pole mounting RPA Round pole mounting WBA Wall bracket	Shipped installed PER NEMA twist-lock receptacle only (no controls). SF Single fuse (120, 277, 347V) ³ DF Double fuse (208, 240, 480V) ³ DMG 0-10V dimming driver (no controls) ⁴ DFL Diffusing lens BL30 Switched dimming, 30% ⁵ BL50 Switched dimming, 50% ⁵ Shipped separately VG Vandal guard ⁶	DDBXD Dark bronze DBLXD Black DNAXD Natural aluminum DWHXD White DDBTXD Textured dark bronze DBLBXD Textured black DNATXD Textured natural aluminum DWHGXD Textured white



The Aeris™ has a unique drilling pattern. Specify this drilling pattern when specifying poles, per the table below.

DM19AS	1 at 90°	DM28AS	2 at 180°
DM29AS	2 at 90°	DM39AS	3 at 90°
DM49AS	4 at 90°	DM32AS	3 at 120° *

Example: SSA 20 4C DM19AS DDBXD

Visit Lithonia Lighting's **POLES CENTRAL** to see our wide selection of poles, accessories and educational tools.

Accessories

Ordered and shipped separately.

DLL127F 1.5 JU	Photocell - SSL twist-lock (120-277V) ⁷
DLL347F 1.5 CUL JU	Photocell - SSL twist-lock (347V) ⁷
DLL480F 1.5 CUL JU	Photocell - SSL twist-lock (480V) ⁷
SC U	Shorting cap ⁷
AS1VG U	Vandal guard accessory
KMA8 DDBXD U	Mast arm adapter (specify finish)
SPA19/AS DDBXD U	Square pole DM19 to DM19AS adapter (specify finish)
RPA19/AS DDBXD U	Round pole DM19 to DM19AS adapter (specify finish)

For more control options, visit **DTL** and **ROAM** online.

Tenon Mounting Slipfitter *

Tenon O.D.	Single Unit	2 at 180°	2 at 90°	3 at 120°	3 at 90°	4 at 90°
2-3/8"	AST20-190	AST20-280	AST20-290	AST20-320	AST20-390	AST20-490
2-7/8"	AST25-190	AST25-280	AST25-290	AST25-320	AST25-390	AST25-490
4"	AST35-190	AST35-280	AST35-290	AST35-320	AST35-390	AST35-490

* For round pole mounting (RPA) only.

NOTES

- Configured with 4000K (40K) provides the shortest lead times. Consult factory for 3000K (30K) and 5000K (50K) lead times.
- MVOLT driver operates on any line voltage from 120-277V (50/60 Hz). Specify 120, 208, 240 or 277 options only when ordering with fusing (SF, DF options).
- Single fuse (SF) requires 120, 277 or 347 voltage option. Double fuse (DF) requires 208, 240 or 480 voltage option.
- Not available with 347 or 480V.
- Requires an additional switched line. Dimming driver standard. MVOLT only.
- Also available as a separate accessory; see Accessories information at left.
- Requires luminaire to be specified with PER option. Ordered and shipped as a separate line item.



Performance Data

Lumen Output

Lumen values are from photometric tests performed in accordance with IESNA LM-79-08. Data is considered to be representative of the configurations shown, within the tolerances allowed by Lighting Facts. Actual wattage may differ by +/- 8% when operating between 120-480V +/- 10%. Contact factory for performance data on any configurations not shown here.

Light Engines	Drive Current (mA)	Performance Package	System Watts	Dist. Type	40K (4000K, 67 CRI)				
					Lumens	B	U	G	LPW
1 (49 LEDs)	350	49B350/-K	59W	SR2	5060	1	0	1	86
				SR3	4642	1	0	1	79
				SR4	4551	1	0	1	77
				SR5	4750	2	0	1	81
1 (63 LEDs)	350	63B350/-K	75W	SR2	6106	1	0	1	81
				SR3	6276	1	0	1	84
				SR4	6207	1	0	1	83
				SR5	6395	3	0	1	85
	530	63B530/-K	109W	SR2	8022	2	0	2	74
				SR3	8194	2	0	2	75
				SR4	8192	2	0	2	75
				SR5	8366	3	0	1	77

Lumen Ambient Temperature (LAT) Multipliers

Use these factors to determine relative lumen output for average ambient temperatures from 0-40°C (32-104°F).

Ambient		Lumen Multiplier
0°C	32°F	1.02
10°C	50°F	1.01
20°C	68°F	1.00
25°C	77°F	1.00
30°C	86°F	1.00
40°C	104°F	0.99

Projected LED Lumen Maintenance

Data references the extrapolated performance projections for the **AS1 LED 1 63B530** platform in a **40°C ambient**, based on 10,000 hours of LED testing (tested per IESNA LM-80-08 and projected per IESNA TM-21-11).

To calculate LLF, use the lumen maintenance factor that corresponds to the desired number of operating hours below. For other lumen maintenance values, contact factory.

Operating Hours	0	25,000	50,000	100,000
Lumen Maintenance Factor	1.0	0.95	0.92	0.87

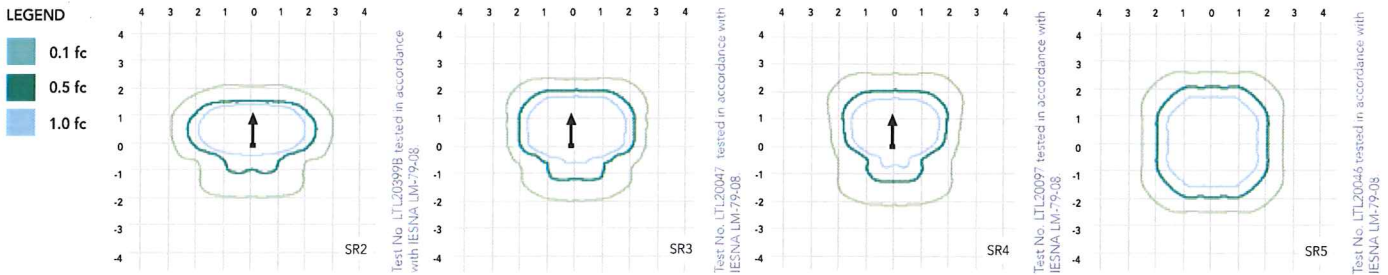
Electrical Load

Light Engines	Drive Current (mA)	System Watts	Current (A)					
			120	208	240	277	347	480
1 (49)	350	59W	0.55	0.32	0.27	0.24	0.19	0.14
1 (63)	350	75W	0.69	0.40	0.35	0.30	0.24	0.17
	530	109W	1.01	0.58	0.50	0.44	0.35	0.25

Photometric Diagrams

To see complete photometric reports or download .ies files for this product, visit Lithonia Lighting's [AS1 LED homepage](#).

Isofootcandle plots for the AS1 LED 1 63B530/40K. Distances are in units of mounting height (20').



FEATURES & SPECIFICATIONS

INTENDED USE

The energy savings and long life of the AS1 LED area luminaire make it a reliable choice for illuminating streets, walkways, parking lots, and surrounding areas.

CONSTRUCTION

Single-piece die-cast aluminum housing with nominal wall thickness of .012". Die-cast doorframe has impact-resistant, tempered glass lens (3/16" thick). Doorframe is fully gasketed with one-piece tubular silicone.

FINISH

Exterior parts are protected by a zinc-infused Super Durable TGIC thermoset powder coat finish that provides superior resistance to corrosion and weathering. A tightly controlled multi-stage process ensures a minimum 3 mils thickness for a finish that can withstand extreme climate changes without cracking or peeling.

OPTICS

Precision-molded refractive acrylic optics housed behind the door frame lens are available in four distributions. Light engines are available in standard 4000K (67 CRI) or optional 3000K (80 CRI) or 5000K (67 CRI) configurations. The AS1 has zero uplight and qualifies as a Nighttime Friendly™ product, meaning it is consistent with the LEED® and Green Globes™ criteria for eliminating wasteful uplight.

ELECTRICAL

Light engine consists of 49 or 63 high-efficacy LEDs mounted to a metal-core circuit board and

aluminum heat sink, ensuring optimal thermal management and long life. Class 1 electronic driver has a power factor >90%, THD <20%, and has an expected life of 100,000 hours with <1% failure rate. Easily-serviceable surge protection device meets a minimum Category C Low operation (per ANSI/IEEE C62.41.2).

INSTALLATION

Integral arm provides easy installation to a pole and assists in alignment and leveling.

LISTINGS

CSA certified to U.S. and Canadian standards. Luminaire is IP65 rated. **U.S. Patent No. D447,590. Canada Patent No. 94324.**

WARRANTY

Five year limited warranty. Full warranty terms located at www.acuitybrands.com/CustomerResources/Terms_and_conditions.aspx.

Note: Specifications subject to change without notice.





D-Series Size 1 LED Area Luminaire



Catalog
Number

Notes

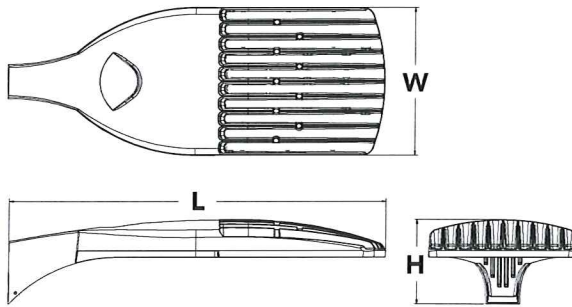
CAPITOL VIEW AT OAK PARK

Type

B - NEW FIXTURE

Specifications

EPA:	1.2 ft ² (0.11 m ²)
Length:	33" (83.8 cm)
Width:	13" (33.0 cm)
Height:	7-1/2" (19.0 cm)
Weight (max):	27 lbs (12.2 kg)



Introduction

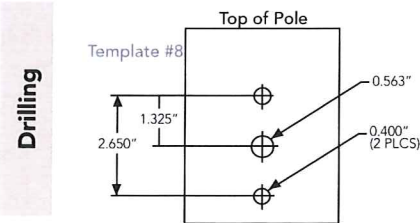
The modern styling of the D-Series is striking yet unobtrusive - making a bold, progressive statement even as it blends seamlessly with its environment.

The D-Series distills the benefits of the latest in LED technology into a high performance, high efficacy, long-life luminaire. The outstanding photometric performance results in sites with excellent uniformity, greater pole spacing and lower power density. It is ideal for replacing 100 – 400W metal halide in pedestrian and area lighting applications with typical energy savings of 65% and expected service life of over 100,000 hours.

Ordering Information

EXAMPLE: DSX1 LED 60C 1000 40K T3M MVOLT SPA DDBXD

DSX1 LED		Drive current		Color temperature		Distribution		Voltage	Mounting	Control options	Other options	Finish ^(required)							
DSX1 LED	30C	30 LEDs (one engine)	530 530 mA	30K	3000K (80 CRI min.)	T1S	Type I short	MVOLT ²	Shipped included	Shipped installed	Shipped installed	DDBXD	Dark bronze						
	40C	40 LEDs (two engines)	700 700 mA	40K	4000K (70 CRI min.) ¹	T2S	Type II short	120 ²						SPA	NEMA twist-lock receptacle only (no controls)	HS	House-side shield ⁹	DBLXD	Black
			1000 1000 mA (1 A)			T2M	Type II medium	208 ²											
60C	60 LEDs (two engines)		50K	5000K (67 CRI)	T3S	Type III short	240 ²	WBA	Dimmable and controllable via ROAM [®] (no controls) ⁴	DF	Double fuse (208, 240, 480V) ¹⁰	DWHXD	White						
					T3M	Type III medium	277 ²							DMG	Dual switching ^{5,6}	DLX	Textured dark bronze		
					T4M	Type IV medium	347											PIR	Motion sensor, 8-15' mounting height ⁷
					TFTM	Forward throw medium	480							PIRH	Motion sensor, 15-30' mounting height ⁸	R90	Textured natural aluminum		
					T5VS	Type V very short													
					T5S	Type V short											DNATXD		
					T5M	Type V medium													
					T5W	Type V wide													



DSX1 shares a unique drilling pattern with the AERIS™ family. Specify this drilling pattern when specifying poles, per the table below.

DM19AS	Single unit	DM29AS	2 at 90°
DM28AS	2 at 180°	DM39AS	3 at 90°
DM49AS	4 at 90°	DM32AS	3 at 120°*

Example: SSA 20 4C DM19AS DDBXD

Visit Lithonia Lighting's **POLES CENTRAL** to see our wide selection of poles, accessories and educational tools.

Tenon Mounting Slipfitter *

Tenon O.D.	Single Unit	2 at 180°	2 at 90°	3 at 120°	3 at 90°	4 at 90°
2-3/8"	AST20-190	AST20-280	AST20-290	AST20-320	AST20-390	AST20-490
2-7/8"	AST25-190	AST25-280	AST25-290	AST25-320	AST25-390	AST25-490
4"	AST35-190	AST35-280	AST35-290	AST35-320	AST35-390	AST35-490

* For round pole mounting (RPA) only.

NOTES

- Configured with 4000K (40K) provides the shortest lead times. Consult factory for 3000K (30K) and 5000K (50K) lead times.
- MVOLT driver operates on any line voltage from 120-277V (50/60 Hz). Specify 120, 208, 240 or 277 options only when ordering with fusing (SF, DF options).
- Not available with 347 or 480V.
- Specifies a ROAM[®] enabled luminaire with 0-10V dimming capability; PER option required. Not available with 347 or 480V. Additional hardware and services required for ROAM[®] deployment; must be purchased separately. Call 1-800-442-6745 or email: sales@roomservices.net.
- Requires 40C or 60C. Provides 50/50 luminaire operation via two independent drivers on two separate circuits. N/A with PER, DCR, DMG or WTB.
- Requires an additional switched line.
- Specifies the **SensorSwitch SBR-10-ODP** control; see **Motion Sensor Guide** for details. Dimming driver standard. Not available with DCR or WTB.
- Specifies the **SensorSwitch SBR-6-ODP** control; see **Motion Sensor Guide** for details. Dimming driver standard. Not available with DCR or WTB.
- Also available as a separate accessory; see Accessories information.
- Single fuse (SF) requires 120, 277 or 347 voltage option. Double fuse (DF) requires 208, 240 or 480 voltage option.
- Available with 60 LEDs (60C option) only.
- Requires luminaire to be specified with PER option. Ordered and shipped as a separate line item.

Drilling

Accessories

Ordered and shipped separately.

DSS124N 1.5 TJE U	Photocell - SSL twist-lock (120-277V) ¹¹
DLL347 1.5 CUL JU	Photocell - SSL twist-lock (347V) ¹²
DLL480 1.5 CUL JU	Photocell - SSL twist-lock (480V) ¹²
SC U	Shorting cap ¹²
DSX1HS U	House-side shield (one per light engine)
SPA19/MR2 DDBXD U	Square pole DM19 to DM19AS adapter (specify finish)
RPA19/MR2 DDBXD U	Round pole DM19 to DM19AS adapter (specify finish)

For more control options, visit **DTL** and **ROAM** online.



Performance Data

Lumen Output

Lumen values are from photometric tests performed in accordance with IESNA LM-79-08. Data is considered to be representative of the configurations shown, within the tolerances allowed by Lighting Facts. Actual wattage may differ by +/- 8% when operating between 120-480V +/-10%. Contact factory for performance data on any configurations not shown here.

Light Engines	Drive Current (mA)	Performance Package	System Watts	Dist. Type	30K (3000K, 80 minimum CRI)					40K (4000K, 70 minimum CRI)					50K (5000K, 67 CRI)					
					Lumens	B	U	G	LPW	Lumens	B	U	G	LPW	Lumens	B	U	G	LPW	
					30C (30 LEDs)	700 mA	30C 700 --K	68 W	T1S	5,290	1	0	1	78	6,524	2	0	2	96	7,053
T2S	5,540	1	0	1					81	6,833	2	0	2	100	7,387	2	0	2	109	
T2M	5,360	1	0	2					79	6,611	2	0	2	97	7,147	2	0	2	105	
T3S	5,479	1	0	1					81	6,757	1	0	2	99	7,305	2	0	2	107	
T3M	5,452	1	0	2					80	6,724	2	0	2	99	7,269	2	0	2	107	
T4M	5,461	1	0	2					80	6,736	2	0	2	99	7,282	2	0	2	107	
TFTM	5,378	1	0	2					79	6,633	1	0	2	98	7,171	1	0	2	105	
TSVS	5,708	2	0	0					84	7,040	3	0	0	104	7,611	3	0	1	112	
TSS	5,639	2	0	0					83	6,955	2	0	0	102	7,519	3	0	0	111	
TSM	5,710	3	0	1					84	7,042	3	0	1	104	7,613	3	0	2	112	
TSW	5,551	3	0	1					82	6,847	3	0	2	101	7,401	3	0	2	109	
1000 mA	30C 1000 --K	105 W	T1S	7,229					2	0	2	69	9,168	2	0	2	87	9,874	2	0
			T2S	7,572		2	0	2	72	9,603	2	0	2	91	10,342	2	0	2	98	
			T2M	7,325		2	0	2	70	9,291	2	0	2	88	10,005	2	0	3	95	
			T3S	7,488		2	0	2	71	9,496	2	0	2	90	10,227	2	0	2	97	
			T3M	7,451		2	0	2	71	9,450	2	0	2	90	10,177	2	0	2	97	
			T4M	7,464		2	0	2	71	9,467	2	0	2	90	10,195	2	0	2	97	
			TFTM	7,351		1	0	2	70	9,323	2	0	2	89	10,040	2	0	3	96	
			TSVS	7,801		3	0	1	74	9,894	3	0	1	94	10,655	3	0	1	101	
			TSS	7,803		3	0	2	74	9,774	3	0	1	93	10,526	3	0	1	100	
			TSM	7,707		3	0	0	73	9,897	3	0	2	94	10,658	4	0	2	102	
			TSW	7,586		3	0	2	72	9,621	4	0	2	92	10,363	4	0	2	99	
			40C (40 LEDs)	700 mA		40C 700 --K	89 W	T1S	6,876	2	0	2	77	8,639	2	0	2	97	9,345	2
T2S	7,202	2						0	2	81	9,049	2	0	2	102	9,788	2	0	2	110
T2M	6,968	2			0			2	78	8,755	2	0	2	98	9,469	2	0	3	106	
T3S	7,122	2			0			2	80	8,948	2	0	2	101	9,679	2	0	2	109	
T3M	7,088	2			0			2	80	8,905	2	0	2	100	9,632	2	0	2	108	
T4M	7,100	2			0			2	80	8,920	2	0	2	100	9,649	2	0	2	108	
TFTM	6,992	1			0			2	79	8,785	2	0	2	99	9,502	2	0	2	107	
TSVS	7,421	3			0			0	83	9,323	3	0	1	105	10,085	3	0	1	113	
TSS	7,331	2			0			0	82	9,210	3	0	1	103	9,962	3	0	1	112	
TSM	7,423	3			0			2	83	9,326	3	0	2	105	10,087	4	0	2	113	
TSW	7,216	3			0			2	81	9,066	4	0	2	102	9,807	4	0	2	110	
1000 mA	40C 1000 --K	138 W			T1S			9,521	2	0	2	69	11,970	2	0	2	87	12,871	3	3
				T2S	9,972	2	0	2	72	12,558	3	0	3	91	13,481	3	0	3	98	
				T2M	9,648	2	0	3	70	12,149	3	0	3	88	13,043	3	0	3	95	
				T3S	9,862	2	0	2	71	12,418	2	0	2	90	13,331	2	0	2	97	
				T3M	9,814	2	0	2	71	12,358	3	0	3	90	13,267	3	0	3	96	
				T4M	9,831	2	0	2	71	12,379	2	0	3	90	13,290	2	0	3	96	
				TFTM	9,681	2	0	2	70	12,191	2	0	3	88	13,087	2	0	3	95	
				TSVS	10,275	3	0	1	74	12,937	3	0	1	94	13,890	4	0	1	101	
				TSS	10,150	3	0	1	74	12,782	3	0	1	93	13,721	3	0	1	99	
				TSM	10,278	4	0	2	74	12,942	4	0	2	94	13,894	4	0	2	101	
				TSW	9,991	4	0	2	72	12,582	4	0	2	91	13,507	4	0	2	98	
				60C (60 LEDs)	700 mA	60C 700 --K	131 W	T1S	10,226	2	0	2	78	12,871	3	0	3	98	13,929	3
T2S	10,711	2						0	2	82	13,481	3	0	3	103	14,589	3	0	3	111
T2M	10,363	2	0					3	79	13,043	3	0	3	100	14,115	3	0	3	108	
T3S	10,592	2	0					2	81	13,331	2	0	2	102	14,427	3	0	3	110	
T3M	10,541	2	0					2	80	13,267	3	0	3	101	14,357	3	0	3	110	
T4M	10,559	2	0					2	81	13,290	2	0	3	101	14,382	3	0	3	110	
TFTM	10,398	2	0					3	79	13,087	2	0	3	100	14,163	2	0	3	108	
TSVS	11,036	3	0					1	84	13,890	4	0	4	106	15,032	4	0	1	115	
TSS	10,902	3	0					1	83	13,721	3	0	1	105	14,849	4	0	1	113	
TSM	11,039	4	0					2	84	13,894	4	0	2	106	15,036	4	0	2	115	
TSW	10,732	4	0					2	82	13,507	4	0	2	103	14,617	4	0	2	112	
1000 mA	60C 1000 --K	209 W	T1S					14,017	3	0	3	67	17,632	3	0	3	84	19,007	3	0
			T2S		14,681	3	0	3	70	18,467	3	0	3	88	19,908	3	0	3	95	
			T2M		14,204	3	0	3	68	17,867	3	0	3	85	19,260	3	0	3	92	
			T3S		14,518	3	0	3	69	18,262	3	0	3	87	19,687	3	0	3	94	
			T3M		14,448	3	0	3	69	18,173	3	0	4	87	19,591	3	0	4	94	
			T4M		14,473	3	0	3	69	18,205	3	0	3	87	19,625	3	0	4	94	
			TFTM		14,253	2	0	3	68	17,928	3	0	4	86	19,326	3	0	4	92	
			TSVS		15,127	4	0	1	72	19,028	4	0	1	91	20,512	4	0	1	98	
			TSS		14,943	4	0	1	71	18,797	4	0	1	90	20,263	4	0	1	97	
			TSM		15,131	4	0	2	72	19,033	4	0	2	91	20,517	5	0	3	98	
			TSW		14,710	4	0	2	70	18,503	5	0	3	89	19,946	5	0	3	95	



Performance Data

Lumen Ambient Temperature (LAT) Multipliers

Use these factors to determine relative lumen output for average ambient temperatures from 0-40°C (32-104°F).

Ambient		Lumen Multiplier
0°C	32°F	1.02
10°C	50°F	1.01
20°C	68°F	1.00
25°C	77°F	1.00
30°C	86°F	1.00
40°C	104°F	0.99

Electrical Load

Number of LEDs	Drive Current (mA)	System Watts	Current (A)					
			120	208	240	277	347	480
30	530	52	0.52	0.30	0.26	0.23	0.18	0.13
	700	68	0.68	0.39	0.34	0.30	0.24	0.17
	1000	105	1.03	0.59	0.51	0.45	0.36	0.26
40	530	68	0.67	0.39	0.34	0.29	0.23	0.17
	700	89	0.89	0.51	0.44	0.38	0.31	0.22
	1000	138	1.35	0.78	0.67	0.58	0.47	0.34
60	530	99	0.97	0.56	0.48	0.42	0.34	0.24
	700	131	1.29	0.74	0.65	0.56	0.45	0.32
	1000	209	1.98	1.14	0.99	0.86	0.69	0.50

Projected LED Lumen Maintenance

Data references the extrapolated performance projections for the platforms noted in a **25°C ambient**, based on 10,000 hours of LED testing (tested per IESNA LM-80-08 and projected per IESNA TM-21-11).

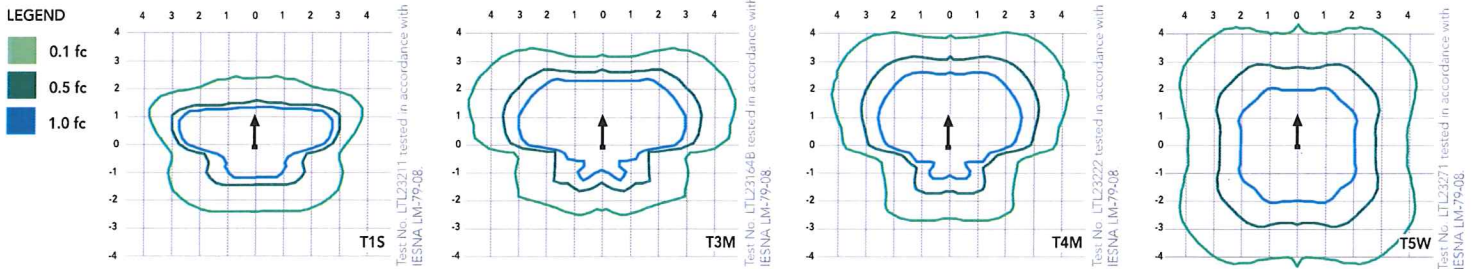
To calculate LLF, use the lumen maintenance factor that corresponds to the desired number of operating hours below. For other lumen maintenance values, contact factory.

Operating Hours	0	25,000	50,000	100,000
Lumen Maintenance Factor	DSX1 LED 60C 1000			
	1.0	0.95	0.93	0.88
	DSX1 LED 60C 700			
	1.0	0.99	0.98	0.96

Photometric Diagrams

To see complete photometric reports or download .ies files for this product, visit Lithonia Lighting's [D-Series Area Size 1 homepage](#).

Isofootcandle plots for the DSX1 LED 60C 1000 40K. Distances are in units of mounting height (20').



FEATURES & SPECIFICATIONS

INTENDED USE

The sleek design of the D-Series Size 1 reflects the embedded high performance LED technology. It is ideal for many commercial and municipal applications, such as parking lots, plazas, campuses, and streetscapes.

CONSTRUCTION

Single-piece die-cast aluminum housing has integral heat sink fins to optimize thermal management through conductive and convective cooling. Modular design allows for ease of maintenance and future light engine upgrades. The LED driver is mounted in direct contact with the casting to promote low operating temperature and long life. Housing is completely sealed against moisture and environmental contaminants (IP65). Low EPA (1.2 ft²) for optimized pole wind loading.

FINISH

Exterior parts are protected by a zinc-infused Super Durable TGIC thermoset powder coat finish that provides superior resistance to corrosion and weathering. A tightly controlled multi-stage process ensures a minimum 3 mils thickness for a finish that can withstand extreme climate changes without cracking or peeling. Available in both textured and non-textured finishes.

OPTICS

Precision-molded proprietary acrylic lenses are engineered for superior area lighting distribution, uniformity, and pole spacing. Light engines are available in standard 4000K (70 minimum CRI) or optional 3000K (80 minimum CRI) or 5000K (67 CRI) configurations. The D-Series Size 1 has zero uplight and qualifies as a Nighttime Friendly™ product, meaning it is consistent with the LEED® and Green Globes™ criteria for eliminating wasteful uplight.

ELECTRICAL

Light engine configurations consist of 30, 40 or 60 high-efficiency LEDs mounted to metal-core circuit boards to maximize heat dissipation and promote long life (up to L96/100,000 hours at 25°C). Class 1 electronic drivers are designed to have a power factor >90%, THD <20%, and an expected life of 100,000 hours with <1% failure rate. Easily serviceable 10kV or 6kV surge protection device meets a minimum Category C Low operation (per ANSI/IEEE C62.41.2).

INSTALLATION

Included mounting block and integral arm facilitate quick and easy installation. Stainless steel bolts fasten the mounting block securely to poles and walls, enabling the D-Series Size 1 to withstand up to a 3.0 G vibration load rating per ANSI C136.31. The D-Series Size 1 utilizes the AERIS™ series pole drilling pattern. Optional terminal block, tool-less entry, and NEMA photocontrol receptacle are also available.

LISTINGS

CSA certified to U.S. and Canadian standards. Light engines are IP66 rated; luminaire is IP65 rated. Rated for -40°C minimum ambient. U.S. Patent No. D672,492 S. International patent pending.

WARRANTY

Five-year limited warranty. Full warranty terms located at: www.acuitybrands.com/CustomerResources/Terms_and_conditions.aspx

Note: Specifications subject to change without notice.





**Architectural Design
Consultants, Inc.**

ENTRY AT NORTH STAR & GEMINI

Capitol View at Oak Park, Madison, WI

October 15, 2013

This document contains confidential or proprietary information of Architectural Design Consultants, Inc.
Neither this document nor the information herein is to be reproduced, distributed, used or disclosed either
in whole or in part except as specifically authorized by Architectural Design Consultants, Inc.



**Architectural Design
Consultants, Inc.**

ENTRY AT HALLEY WAY

Capitol View at Oak Park, Madison, WI

October 15, 2013

This document contains confidential or proprietary information of Architectural Design Consultants, Inc. Neither this document nor the information herein is to be reproduced, distributed, used or disclosed either in whole or in part except as specifically authorized by Architectural Design Consultants, Inc.



**Architectural Design
Consultants, Inc.**

NORTH TERRACE

Capitol View at Oak Park, Madison, WI

October 15, 2013

This document contains confidential or proprietary information of Architectural Design Consultants, Inc. Neither this document nor the information herein is to be reproduced, distributed, used or disclosed either in whole or in part except as specifically authorized by Architectural Design Consultants, Inc.



ADICI
Architectural Design
Consultants, Inc.

Capitol View at Oak Park, Madison, WI

October 15, 2013

This document contains confidential or proprietary information of Architectural Design Consultants, Inc. Neither this document nor the information herein is to be reproduced, distributed, used or disclosed either in whole or in part except as specifically authorized by Architectural Design Consultants, Inc.



**Architectural Design
Consultants, Inc.**

Capitol View at Oak Park, Madison, WI

October 15, 2013

This document contains confidential or proprietary information of Architectural Design Consultants, Inc. Neither this document nor the information herein is to be reproduced, distributed, used or disclosed either in whole or in part except as specifically authorized by Architectural Design Consultants, Inc.

HVAC COOLING TOWER
SCREENED BEHIND TALL PARAPET WALL



VIEW FROM NORTH

HVAC COOLING TOWER
SCREENED BEHIND TALL PARAPET WALL



VIEW FROM SOUTH

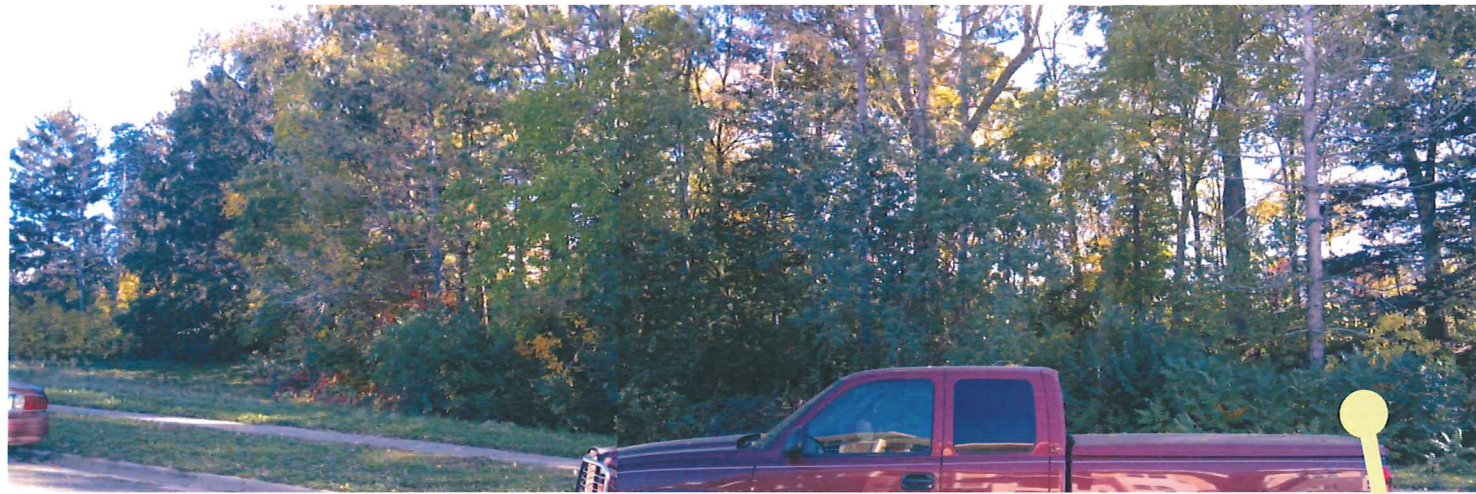


**Architectural Design
Consultants, Inc.**

HVAC EQUIPMENT SCREENING

Capitol View at Oak Park, Madison, WI

October 15, 2013



**Architectural Design
Consultants, Inc.**

EXISTING WOODS—BUFFER

Capitol View at Oak Park, Madison, WI

October 15, 2013



SIGN ELEVATION—GEMINI DRIVE

1/4" = 1'-0"



SIGN ELEVATION—HALLEY WAY

1/4" = 1'-0"

WALL SIGN DETAILS

- ILLUMINATED, CAST ALUMINUM LETTERS, PROJECTION MOUNTED
- DARK BRONZE FINISH
- 16 INCH HIGH UPPER CASE
- 10 INCH HIGH LOWER CASE
- 8 INCH HIGH STREET ADDRESS LETTERS
- (EXCLUDED FROM SIGN AREA)
- LASER CUT LOGO, PROJECTION MOUNTED
- SIGN AREA: 36 SF
- SIGNABLE AREA: 23 FT x 5.5 FT | 126.5 SF

SIGN / SIGNABLE: 28.46%

WALL SIGN DETAILS

- ILLUMINATED, CAST ALUMINUM LETTERS, PROJECTION MOUNTED
- DARK BRONZE FINISH
- 12 INCH HIGH UPPER CASE
- 8 INCH HIGH LOWER CASE
- 6 INCH HIGH STREET ADDRESS LETTERS
- (EXCLUDED FROM SIGN AREA)
- LASER CUT LOGO, PROJECTION MOUNTED
- SIGN AREA: 28 SF
- SIGNABLE AREA: 23 FT x 4.5 FT | 103.5 SF

SIGN / SIGNABLE: 27.05%



**Architectural Design
Consultants, Inc.**

EXTERIOR SIGNS

Capitol View at Oak Park, Madison, WI

October 15, 2013