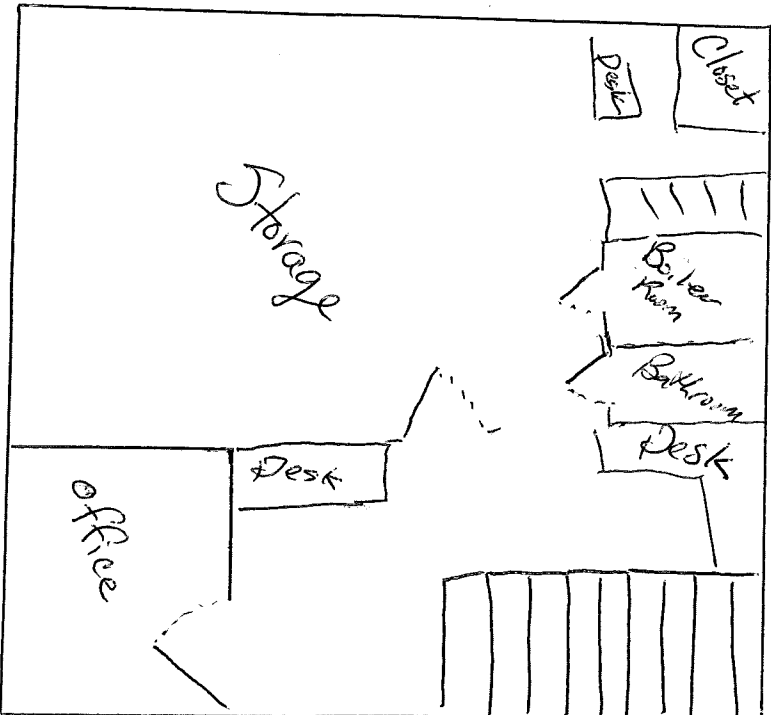


Stairs to Basement

Garden area for wine tasting & custom experiences. Max 20 persons.



Notes:

- \* Not to Scale
- \* Wine Storage Behind Perfume Counter with Fridge for White Wines and Prepared CheeseTrays.

Basement

SERVING YOU SINCE 1972

CHEESE PLATES & DESSERTS

FROMAGINATION CHEESE PLATTER #1

FROMAGINATION CHEESE PLATTER #2

CHEESECAKE PLATTER

A delicious combination of chocolate, plain, and strawberry cheesecake bites.

Thank you for joining us for our first year serving wine and other delights in our garden. Please excuse the plastic glasses this year as we are taking this step by step to see if there is interest. Not to mention, as a small family owned business we do not have the resources to immediately make huge renovations or purchase such as a commercial washer. If this proves to be a success we will most certainly be making this experience better and better every year. Who knows, perhaps we will be brewing our own wine for you in 3-5 years! In the meantime, please enjoy our selection of local wines!

NON ALCOHOLIC BEVERAGES

TEA: Jasmine, Gree, & Black (Available hot or iced)

COFFEE: black or with cream (available hot or iced)

SODA: Pepsi, Sprite, Root Beer

LEMONADE

RED WINE

BOTHAM VINYARD RED WINE #1

BOTHAM VINYARD RED WINE #2

BOTHAM VINYARD RED WINE #3

WHITE WINE

BOTHAM VINYARD WHITE WINE #1

BOTHAM VINYARD WHITE WINE #2

BOTHAM VINYARD WHITE WINE #3