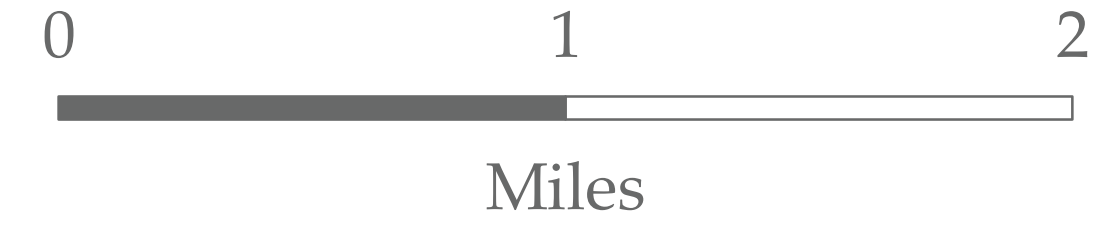
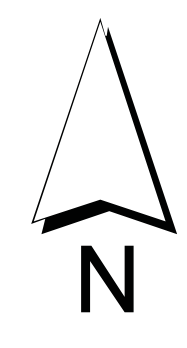


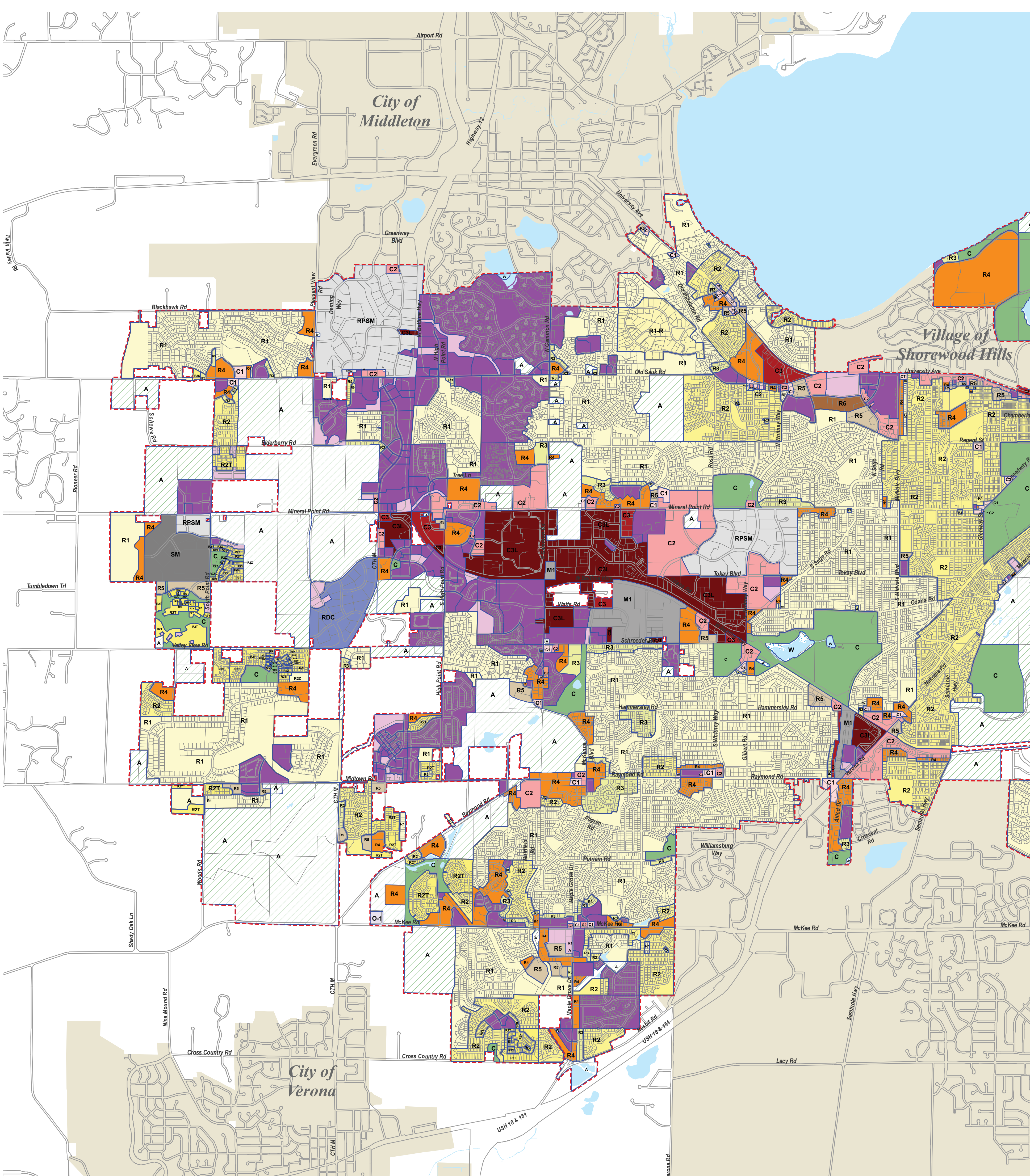
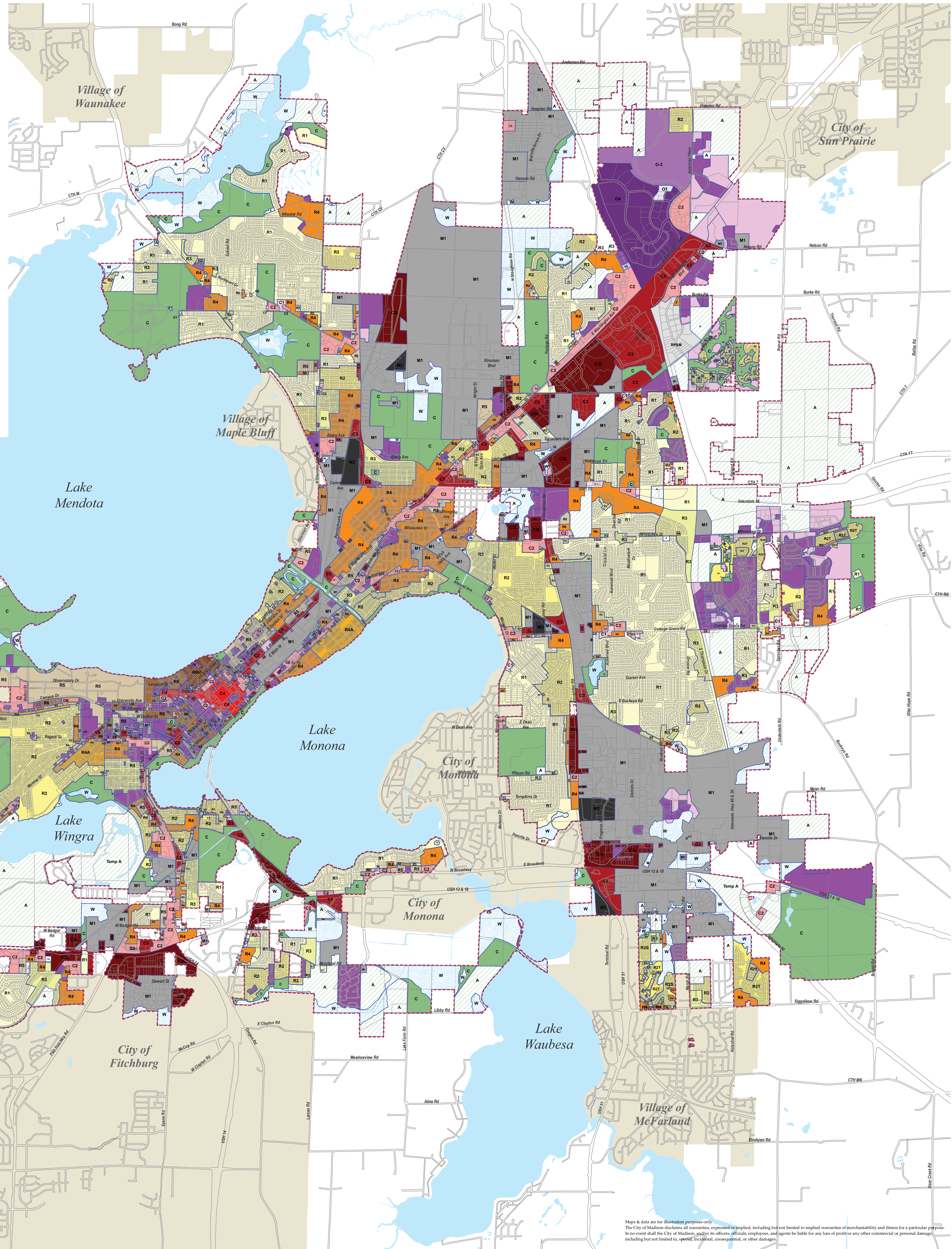
# City of Madison Zoning Districts

July 2011



## City of Madison Zoning Districts

R1 - Single-Family Residence District	OR - Office Residence District	C1 - Limited Commercial District
R1-R - Rustic Residence District	PCDGDP - Planned Community Development - General Development Plan	C2 - General Commercial District
R2 - Single-Family Residence District	PCDMHPGDP - Planned Community Mobile Home Park District - General Development Plan	C3 - Highway Commercial District
R2S - Single-Family Residence District	PUDGDP - Planned Unit Development - General Development Plan	C3L - Commercial Service and Distribution District
R2T - Single-Family Residence District	PUDSIP - Planned Unit Development - Specific Implementation Plan	C4 - Central Commercial District
R2Y - Single-Family Residence District	PCDMHSIP - Planned Community Mobile Home Park District - Specific Implementation Plan	RPSM Research Park - Specialized Manufacturing District
R2Z - Single-Family Residence District	PCDSIP - Planned Community Development - Specific Implementation Plan	RDC - Research & Development Center District - Specialized Research & Manufacturing District
R3 - Single- and Two-Family Residence District	O-1 - Limited Office-Residence District	M1 - Limited Manufacturing District
R4 - General Residence District	O-2 - Business & Professional Office District	SM - Specific Manufacturing District
R4A - Limited General Residence District	O-3 - Administrative Office District	M2 - General Manufacturing District
R4L - Limited General Residence District	O-4 - Administrative Office & Research & Development District	A - Agriculture District
R5 - General Residence District		C - Conservancy District
R6 - General Residence District		W - Wetland Overlay District
R6H - General Residence District		TBD - To Be Determined



Maps & data are for illustrative purposes only. The City of Madison disclaims all warranties, expressed or implied, including but not limited to implied warranties of merchantability and fitness for a particular purpose. In no event shall the City of Madison, and/or its officers, officials, employees, and agents be liable for any loss of profit or any other commercial or personal damages, including but not limited to, specific, incidental, consequential, or other damages.