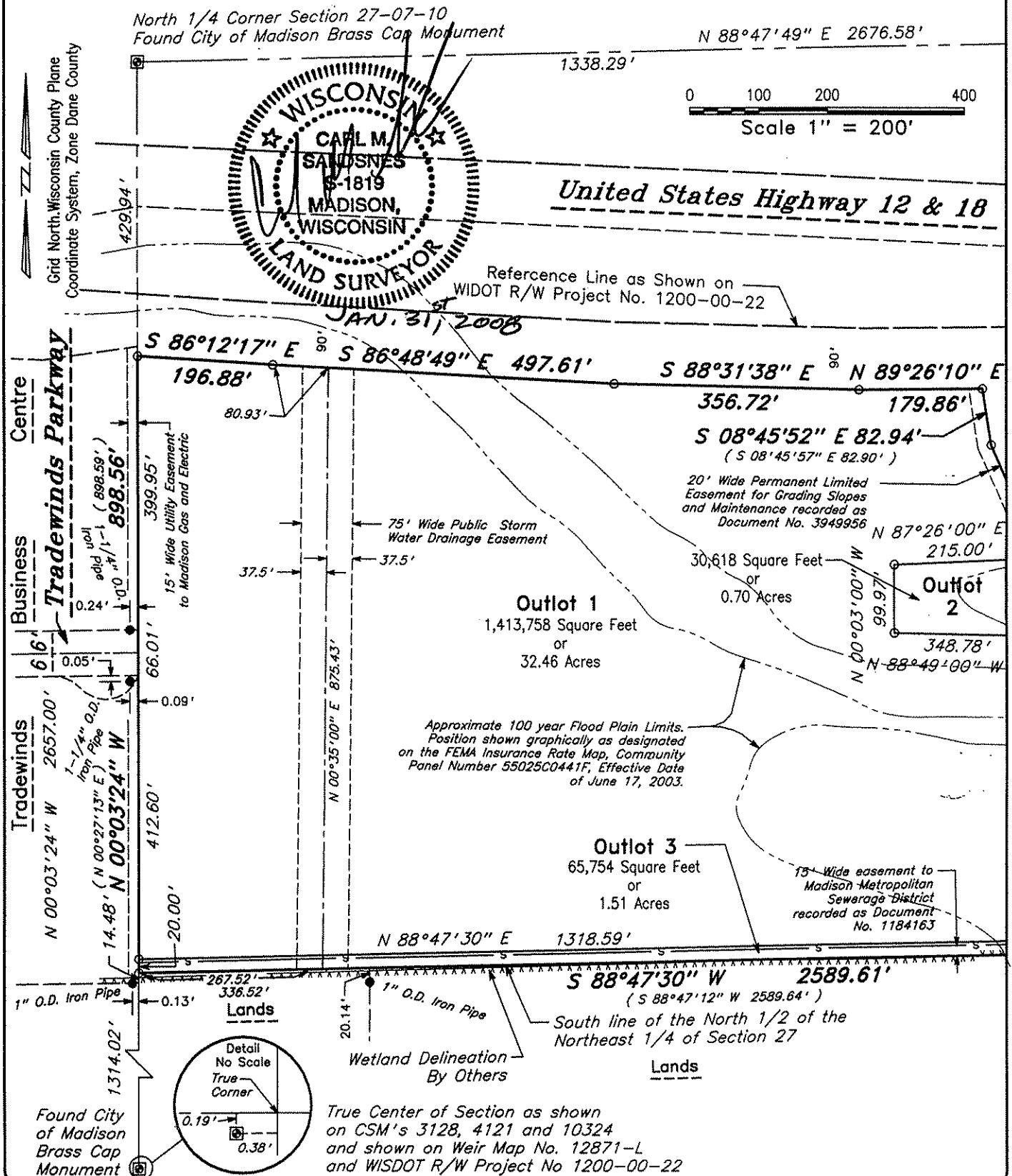


CERTIFIED SURVEY MAP

Being a division of part of the Northwest 1/4 of the Northeast 1/4
and part of the Northeast 1/4 of the Northeast 1/4 of Section 27,
Township 10 North, Range 10 East, City of Madison, Dane County, Wisconsin



Surveyed by JRS
 Drawn by RP
 Checked by CMS
 Approved by CMS
 Field Book Trimble TSCe
 Date January 30, 2008

Royal Oak Engineering Inc.
 5610 Medical Circle Suite 6 Madison Wisconsin 53719
 Phone 274-0500 Fax. 274-4530

Surveyed For: