

EXISTING UTILITY STRUCTURE TABLE

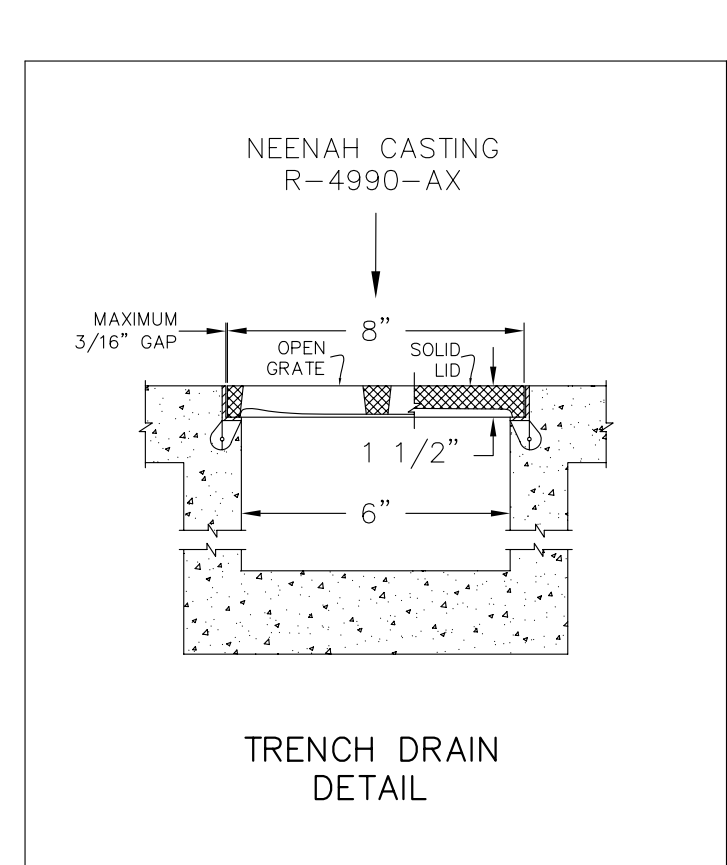
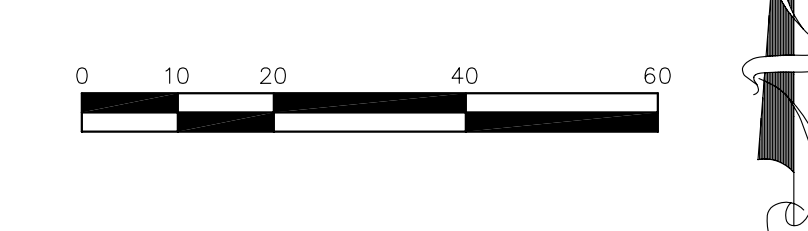
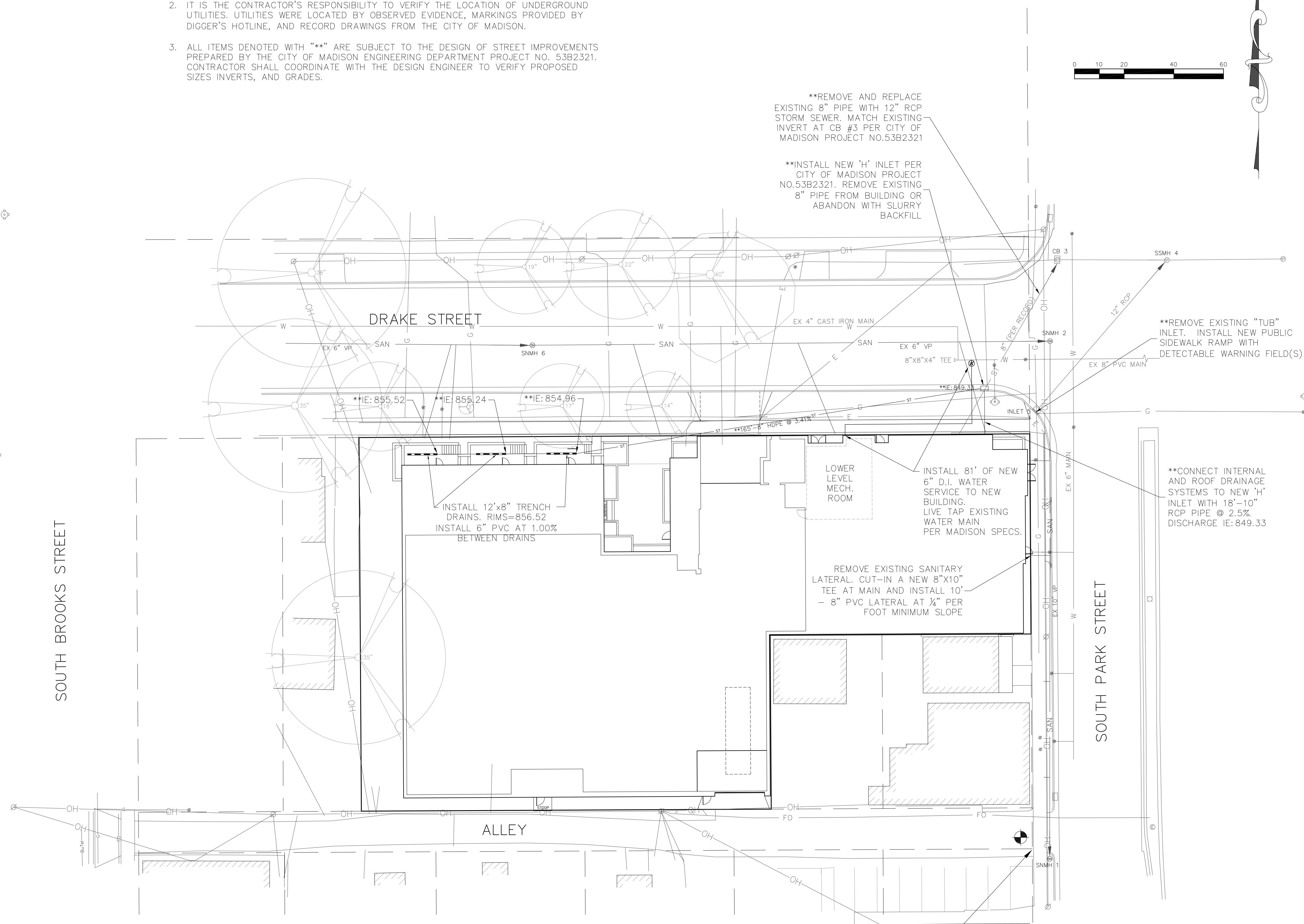
STRUCTURE #	RIM/TC	INVERT(S)
SNMH 1	851.35	841.90 S
SNMH 2	852.27	843.92 W 843.63 N
CB 3	852.40	STRUCTURE FLOOR ELEV: 849.04
SSMH 4	852.70	STRUCTURE FLOOR ELEV: 848.05
INLET 5	851.95	849.15 NE
SNMH 6	859.65	851.45 N 849.96 W
CB 9	851.99	849.93 N

NOTES:

- ALL PRIVATE UTILITIES (GAS, ELECTRIC, AND TELECOMMUNICATIONS) SERVING EXISTING BUILDINGS SCHEDULED FOR DEMOLITION TO BE ABANDONED OR REMOVED BY CORRESPONDING UTILITY COMPANY.
- IT IS THE CONTRACTOR'S RESPONSIBILITY TO VERIFY THE LOCATION OF UNDERGROUND UTILITIES. UTILITIES WERE LOCATED BY OBSERVED EVIDENCE, MARKINGS PROVIDED BY DIGGER'S HOTLINE, AND RECORD DRAWINGS FROM THE CITY OF MADISON.
- ALL ITEMS DENOTED WITH "\*\*" ARE SUBJECT TO THE DESIGN OF STREET IMPROVEMENTS PREPARED BY THE CITY OF MADISON ENGINEERING DEPARTMENT PROJECT NO. 53B2321. CONTRACTOR SHALL COORDINATE WITH THE DESIGN ENGINEER TO VERIFY PROPOSED SIZES, INVERTS, AND GRADES.

**UTILITY LEGEND**

OH	OVERHEAD UTILITY
—	BURIED GAS MAIN
—	WATER MAIN
—	SANITARY SEWER
—	STORM SEWER
—	BURIED TELEPHONE
—	BURIED ELECTRIC
—	BURIED CABLE TV
—	BURIED FIBER OPTIC
●	WATER VALVE
●	GAS VALVE
□	CABLE TV PEDESTAL
□	ELECTRIC PEDESTAL
□	TELEPHONE PEDESTAL
□	UTILITY POLE
□	LIGHT POLE
□	QUI WIRE
□	MAILBOX
□	SIGN
□	PARKING METER
□	FIRE HYDRANT
○	IRON PIPE OR STAKE FOUND
□	STORM SEWER STRUCTURE
□	CATCH BASIN
□	STORM SEWER INLET
○	ELECTRIC MANHOLE
○	TELECOMM. MANHOLE
○	STORM SEWER MANHOLE
○	SANITARY SEWER MANHOLE
○	WATER UTILITY MANHOLE
○	3" DECIDUOUS TREE
○	3" CONIFEROUS TREE
○	MAN CONTROL POINT
○	BM-1 BENCHMARK
BT	BITUMINOUS PAVEMENT
CONC	CONCRETE PAVEMENT
TE	TRAFFIC ENGINEERING
•	BOLLARD



**CALL DIGGERS HOTLINE**  
1-800-242-8511 OR 811  
TOLL FREE

TDD(FOR THE HEARING IMPAIRED)(800)542-2289

WIS. STATUTE 182.0175 (1974)  
REQUIRES MIN. OF 3 WORK DAYS  
NOTICE BEFORE YOU EXCAVATE

**Burse**  
Surveying and Engineering, Inc.  
1400 E. Washington Ave, Suite 150  
Madison, WI 53703  
Phone: 608-250-9263  
Fax: 608-250-9266  
e-mail: mburse@bse-inc.net  
www.burseurveyengr.com

---

**APPROVALS**  
PROJECT ENG: \_\_\_\_\_  
DESIGNED BY: \_\_\_\_\_  
DRAWN BY: \_\_\_\_\_  
CHECKED BY: \_\_\_\_\_  
APPROVED: \_\_\_\_\_

---

**The Ideal**  
502 South Park Street  
Madison, WI 53715

**Galina Corporation**  
101 East Main Street, Suite 500  
Mount Horeb, WI 53572

---

**PROJECT #:** BSE1402-10  
**PLOT DATE:** 11/15/2012

**REVISION DATES:**  
08/15/2012  
11/15/2012

**ISSUE DATES:**  
06/06/2012  
08/15/2012  
**SIP SUBMITTAL:** 11/15/2012

---

**UTILITY PLAN**

**Burse**  
Surveying and Engineering, Inc.

This document contains confidential or proprietary information of Burse Surveying and Engineering, Inc. Neither the document nor the information herein is to be reproduced, distributed, used or disclosed, either in whole or in part, except as specifically authorized by Burse Surveying and Engineering, Inc.

**DRAWING NUMBER**  
**C-103**