

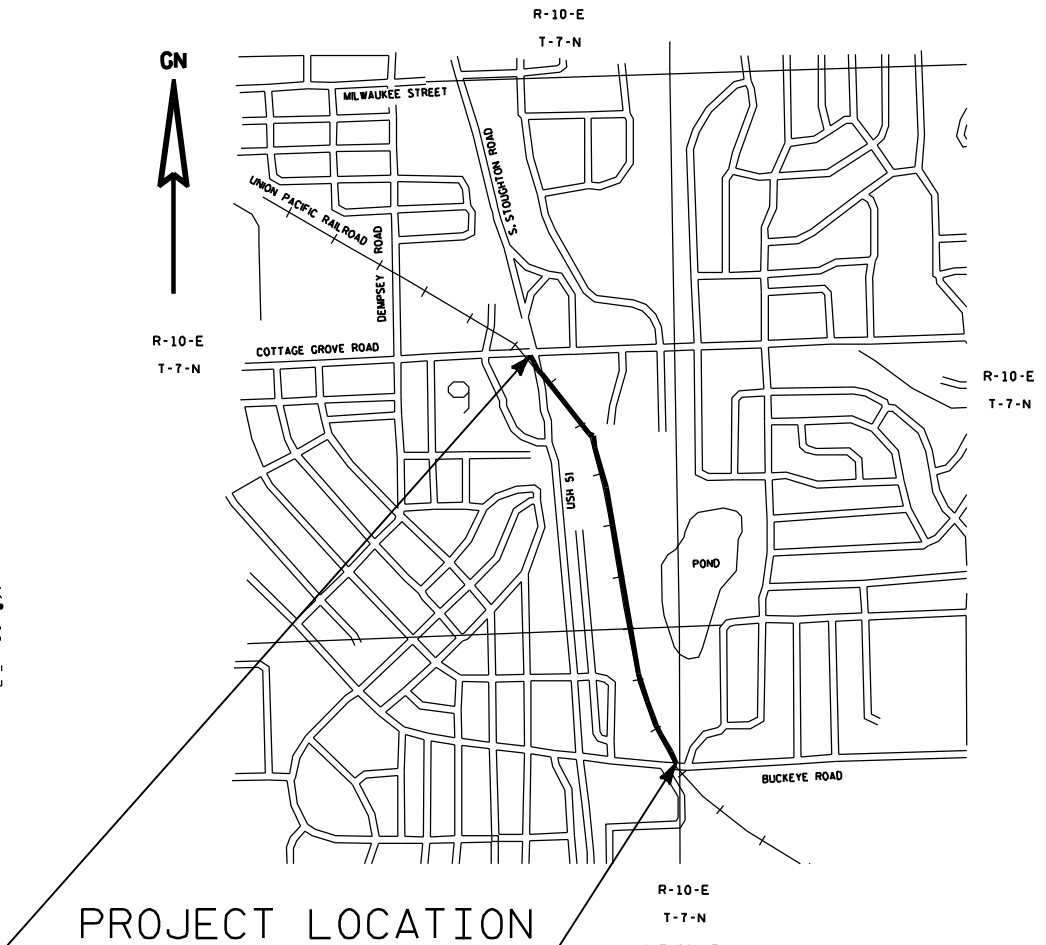
CITY OF MADISON DEPARTMENT OF PUBLIC WORKS TRANSPORTATION PROJECT PLAT TITLE SHEET PROJECT 53B0965 BUCKEYE EXTENSION - EAST BIKE PATH (COTTAGE GROVE ROAD - BUCKEYE ROAD)

4

4

CONVENTIONAL SYMBOLS AND ABBREVIATIONS

STATE, COUNTY, or TOWN LINE	=====	ACCESS POINT	AP
SECTION LINE	=====	ACCESS RIGHTS	AR
QUARTER LINE	=====	ACRES	AC.
SIXTEENTH LINE	=====	AND OTHERS	ET.AL.
PROPOSED REFERENCE LINE	----- 100	CENTERLINE	C/L
PROPOSED R/W LINE	=====	CERTIFIED SURVEY MAP DOCUMENT	CSM DOC.
EXISTING R/W LINE	=====	HIGHWAY EASEMENT	H.E.
PROPERTY LINE	=====	LAND CONTRACT	LC
EASEMENT LINE	=====	MONUMENT	MON.
CORPORATE LIMITS	=====	PAGE	P.
EXISTING CENTERLINE	-----	PROPERTY LINE	PL
LOT & TIE LINES	=====	PERMANENT LIMITED EASEMENT RECORDED AS	PLE (100')
UTILITIES	-----	REFERENCE LINE	R/L
(TELEPHONE, GAS, ELECTRIC, CABLE TV, FIBER OPTIC)	(TYPE)	REMAINING	REM.
ACCESS RESTRICTED (BY PREVIOUS PROJECT/CONTROL)	◆◆◆◆◆	RIGHT-OF-WAY SECTION	R/W SEC.
NO ACCESS (BY PARCEL ACQUISITION)	-----	SQUARE FEET	SO.FT.
NO ACCESS (BY STATUTORY AUTHORITY)	●●●●●	STATION	STA.
FOUND IRON PIPE/PIN	IP (1" UNLESS NOTED)	TEMPORARY LIMITED EASEMENT	TLE
R/W MONUMENT	● (ISET)	VOLUME	V.
R/W STANDARD	▲ (ISET)	TRANSPORTATION PROJECT PLAT	TPP
PARCEL NUMBER	102	FEE ACQUISITION AREA (HATCH VARIES BY OWNER)	▨
POWER POLE	⊠	TEMPORARY LIMITED EASEMENT AREA	▨
TELEPHONE POLE	⊠	EASEMENT (HIGHWAY, PERMANENT LIMITED OR RESTRICTED DEVELOPMENT) AREAS	▨
TELEPHONE PEDESTAL	⊠	SIGN NUMBER (OFF PREMISE)	21-1
GUY WIRE	⊙ GUY	SIGN	⊠ SIGN
GAS STATION	⊠ GAS STA.	CURVE DATA	
SECTION CORNER	⊠	LONG CHORD	LC
BUILDING	▭	LONG CHORD BEARING	LCB
		RADIUS	R
		DEGREE OF CURVE	D
		CENTRAL ANGLE OR DELTA	Δ
		LENGTH OF CURVE	L
		TANGENT	T



THE NOTES, AND CONVENTIONAL SIGNS AND ABBREVIATIONS ARE FOR ALL TRANSPORTATION PROJECT PLATS ASSOCIATED WITH THIS TRANSPORTATION PROJECT PLAT TITLE SHEET.

NOTES:

- COORDINATES AND BEARINGS ON THE PLAT ARE REFERENCED TO THE WISCONSIN COORDINATE SYSTEM SOUTH ZONE, NAD 1927 ADJUSTMENT. THE COORDINATES SHOWN ARE GRID COORDINATES AND ARE TO BE USED AS GRID OR GROUND VALUES ON THIS PLAT.
- PROPERTY LINES SHOWN ON THIS PLAT ARE DRAWN FROM MAPS AND DOCUMENTS OF PUBLIC RECORD AND/OR EXISTING OCCUPATIONAL LINES. EXCLUDING RIGHT-OF-WAY BOUNDARIES, THIS PLAT MAY NOT BE A TRUE REPRESENTATION OF EXISTING PROPERTY LINES AND SHOULD NOT BE USED AS A SUBSTITUTE FOR AN ACCURATE FIELD SURVEY.
- PARCEL IDENTIFICATION NUMBERS MAY NOT POINT TO ALL AREAS OF ACQUISITION, AS NOTED ON THE SCHEDULE OF LANDS & INTERESTS REQUIRED.
- A TEMPORARY LIMITED EASEMENT (TLE) FOR A BIKE PATH, INCLUDING FOR SUCH PURPOSE THE RIGHT TO OPERATE THE NECESSARY EQUIPMENT, THE RIGHT OF INGRESS AND EGRESS AS REQUIRED AND THE RIGHT TO PRESERVE, PROTECT, REMOVE OR PLANT ANY VEGETATION THAT THE HIGHWAY AUTHORITIES MAY DEEM DESIREABLE TO PREVENT THE EROSION OF THE SOIL THE EASEMENT IS TO TERMINATE ON THE DATE THE CONSTRUCTION OF THIS PROJECT IS COMPLETED OR DECEMBER 31, 2010, WHICHEVER COMES FIRST.
- A PERMANENT LIMITED EASEMENT (PLE) FOR A BIKE PATH, AS DEFINED HEREIN, INCLUDING FOR SUCH PURPOSE THE RIGHT TO OPERATE THE NECESSARY EQUIPMENT, THE RIGHT OF INGRESS AND EGRESS AS REQUIRED AND THE RIGHT TO PRESERVE, PROTECT, REMOVE OR PLANT ANY VEGETATION THAT THE HIGHWAY AUTHORITIES MAY DEEM DESIREABLE, BUT WITHOUT PREJUDICE TO THE OWNER'S RIGHT TO MAKE OR CONSTRUCT IMPROVEMENTS ON SAID LANDS OR FLATTEN SLOPES, PROVIDING SAID ACTIVITIES WILL NOT IMPAIR OR OTHERWISE ADVERSELY AFFECT THE HIGHWAY FACILITIES.
- ALL RIGHT-OF-WAY LINES DEPICTED IN NON ACQUISITION AREAS ARE INTENDED TO RE-ESTABLISH EXISTING RIGHT-OF-WAY LINES AS DETERMINED FROM PREVIOUS PROJECTS, OTHER RECORDED DOCUMENTS, OR FROM CENTERLINE OF EXISTING PAVEMENTS.
- RIGHT OF WAY BOUNDARIES ARE DEFINED WITH COURSES OF THE PERIMETER OF THE HIGHWAY LANDS REFERENCED TO THE U.S. PUBLIC LAND SURVEY OR OTHER "SURVEYS OF PUBLIC RECORDS".
- RIGHT-OF-WAY MONUMENTS ARE 3/4 INCH BY 24 INCH REBAR AND WILL BE PLACED PRIOR TO THE COMPLETION OF THE PROJECT.

SHEET 1 OF 4

APPROVED FOR CITY OF MADISON RELOCATION ORDER APPROVED BY THE COMMON COUNCIL DATE: 07/18/06 _____ CITY CLERK	 Transportation Municipal Environmental Survey/GIS	RESERVED FOR REGISTER OF DEEDS PROJECT NUMBER 53B0965-4.01 AMENDMENT NO: _____ ACCEPTED FOR RECORDING AND FILING IN THE OFFICE OF THE REGISTER OF DEEDS IN DANE COUNTY, WISCONSIN AT ... M ON ... AS DOCUMENT # ... AND FILED IN ... SIGNATURE OF REGISTER OF DEEDS
RELOCATION ORDER APPROVED BY THE PLAN COMMISSION DATE: 06/05/06 _____ EXECUTIVE SECRETARY		I, THOMAS J. HANSEN, REGISTERED LAND SURVEYOR, HEREBY CERTIFY THAT IN FULL COMPLIANCE WITH THE PROVISIONS OF SECTION 84.095 OF THE WISCONSIN STATUTES AND UNDER THE DIRECTION OF THE CITY OF MADISON, I HAVE SURVEYED AND MAPPED TRANSPORTATION PROJECT PLAT 53B0965-4.01 AND THAT SUCH PLAT CORRECTLY REPRESENTS ALL EXTERIOR BOUNDARIES OF THE SURVEYED LAND. DATE: SEPTEMBER 18, 2006 (SIGNATURE) <i>Thomas J. Hansen</i> THOMAS J. HANSEN AGENT FOR KL ENGINEERING, INC. R.L.S. NUMBER 2033
RELOCATION ORDER APPROVED BY THE BOARD OF PUBLIC WORKS DATE: 06/21/06 _____ EXECUTIVE SECRETARY		

4.

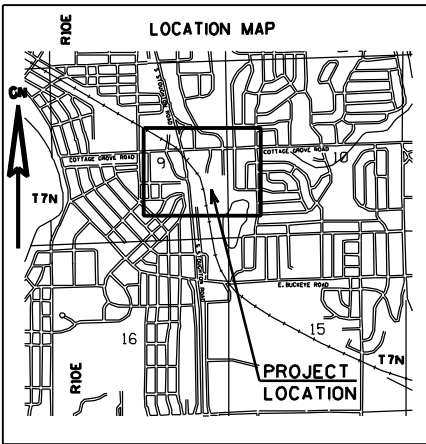
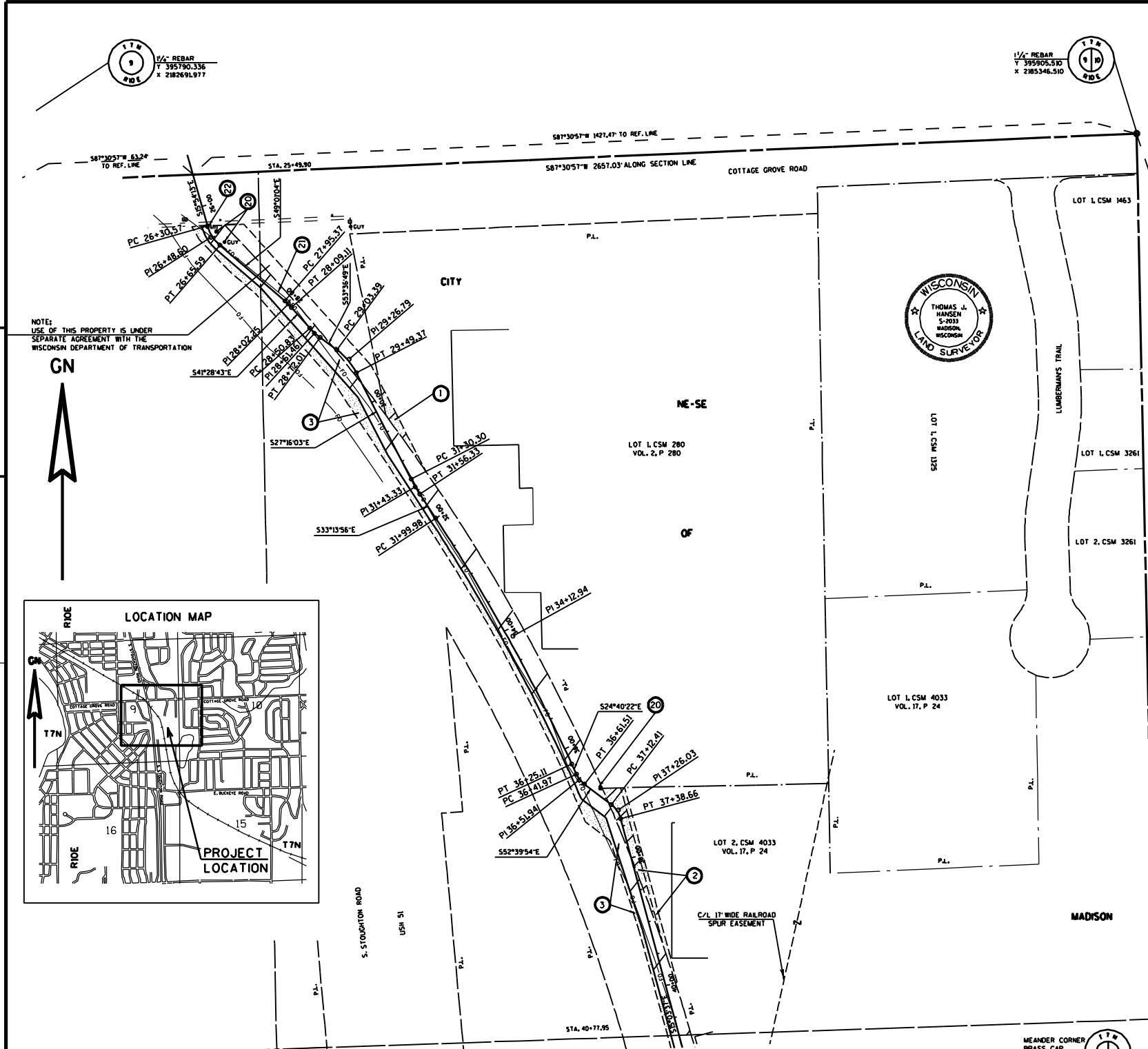
TRANSPORTATION PROJECT PLAT NO: 53B0965-4.02

THAT PART OF LOT 1, CSM 280, RECORDED IN VOLUME 2 OF CERTIFIED SURVEY MAPS, ON PAGE 280 AND LOT 2, CSM 4033, RECORDED IN VOLUME 17 OF CERTIFIED SURVEY MAPS, ON PAGE 24, AND A PART OF THE NE 1/4 - SE 1/4 OF SECTION 9, T7N, R 10 E, CITY OF MADISON, DANE COUNTY, WISCONSIN

RELOCATION ORDER BUCKEYE EXTENSION - EAST BIKE PATH CITY OF MADISON (COTTAGE GROVE ROAD TO BUCKEYE ROAD)

TO PROPERLY ESTABLISH, LAY OUT, WIDEN, ENLARGE, EXTEND, CONSTRUCT, RECONSTRUCT, IMPROVE, OR MAINTAIN A PORTION OF THE HIGHWAY DESIGNATED ABOVE, THE STATE OF WISCONSIN DEPARTMENT OF TRANSPORTATION DEEMS IT NECESSARY TO RELOCATE OR CHANGE SAID HIGHWAY AND ACQUIRE CERTAIN LANDS AND INTERESTS OR RIGHTS IN LANDS FOR THE ABOVE PROJECT.

TO EFFECT THIS CHANGE, PURSUANT TO AUTHORITY GRANTED UNDER SECTION 84.02 (3) AND 84.09, WISCONSIN STATUTES, THE DEPARTMENT OF TRANSPORTATION HEREBY ORDERS THAT:
 1. THAT PORTION OF SAID HIGHWAY AS SHOWN ON THIS PLAT IS LAID OUT AND ESTABLISHED TO THE LINES AND WIDTHS AS SO SHOWN FOR THE ABOVE PROJECT.
 2. THE LANDS OR INTERESTS OR RIGHTS IN LANDS AS SHOWN ON THIS PLAT ARE REQUIRED BY THE DEPARTMENT FOR THE ABOVE PROJECT AND SHALL BE ACQUIRED IN THE NAME OF THE STATE OF WISCONSIN, PURSUANT TO THE PROVISIONS OF SECTION 84.09 (1) OR (2), WISCONSIN STATUTES.



4

4

CURVE DATA	CURVE DATA	CURVE DATA	CURVE DATA
PI STA. 29+26.79 Y: 395564.769 X: 2184156.680 D: 26°20'46" RT. L: 57'17'45" T: 45.88' R: 23.40' PC STA. 29+03.39 PT STA. 29+49.37 LC: 45.58' LCB: S 40°26'26" E	PI STA. 34+12.94 Y: 395146.024 X: 2184464.032 D: 08°33'35" RT. L: 02°00'48" T: 425.13' R: 212.96' PC STA. 31+98.98 PT STA. 36+25.11 LC: 424.13' LCB: S 28°37'09" E	PI STA. 36+51.94 Y: 394328.121 X: 2184504.131 D: 21°58'32" LT. L: 143°14'22" T: 19.54' R: 9.97' PC STA. 36+41.97 PT STA. 36+61.51 LC: 19.35' LCB: S 38°40'08" E	PI STA. 37+26.03 Y: 394882.949 X: 2184563.352 D: 103°14'22" L: 37°36'17" T: 26.25' R: 13.62' PC STA. 37+12.41 PT STA. 37+38.66 LC: 25.18' LCB: S 33°51'45" E
PI STA. 26+30.57 Y: 395748.719 X: 2183947.431 D: 33°26'44" LT. L: 99°29'35" T: 35.02' R: 18.02' PC STA. 26+30.57 PT STA. 26+65.59 LC: 34.51' LCB: S 66°37'47" E	PI STA. 28+02.25 Y: 395647.952 X: 2184064.786 D: 07°52'14" RT. L: 57°17'45" T: 13.74' R: 6.88' PC STA. 27+55.37 PT STA. 28+09.11 LC: 13.75' LCB: S 45°24'50" E	PI STA. 28+61.46 Y: 395603.576 X: 2184104.038 D: 12°08'06" LT. L: 57°17'45" T: 21.18' R: 10.63' PC STA. 28+50.83 PT STA. 28+72.01 LC: 21.14' LCB: S 47°32'46" E	PI STA. 31+43.33 Y: 395371.563 X: 2184256.262 D: 06°57'54" LT. L: 22°55'06" T: 26.03' R: 13.03' PC STA. 31+30.30 PT STA. 31+56.33 LC: 26.02' LCB: S 30°14'59" E

SCHEDULE OF LANDS & INTERESTS REQUIRED

PARCEL NUMBER	OWNER	INTEREST REQUIRED	AREA SQ.FT. REQUIRED			PLE SQ.FT.	TLE SQ.FT.
			NEW	EXISTING	TOTAL		
1	CENTRAL STORAGE & WAREHOUSE COMPANY	PLE	---	---	---	1,132	---
2	LANOGA CORPORATION	PLE, TLE	---	---	---	2,824	1,718
3	UNION PACIFIC RAILROAD COMPANY	PLE, TLE	---	---	---	4,108	13,138
20	ATC	RELEASE OF RIGHTS					
21	AT&T	RELEASE OF RIGHTS					
22	CITY OF MADISON - STORM SEWER	RELEASE OF RIGHTS					

OWNERS' NAMES ARE SHOWN FOR REFERENCE PURPOSES ONLY, AND ARE SUBJECT TO CHANGE PRIOR TO TRANSFER OF LAND INTERESTS TO THE CITY OF MADISON.

NOTES:
 COORDINATES AND BEARINGS ON THE PLAT ARE REFERENCED TO THE WISCONSIN COORDINATE SYSTEM SOUTH ZONE, NAD 27 ADJUSTMENT. THE COORDINATES SHOWN ARE GRID COORDINATES AND ARE TO BE USED AS GRID OR GROUND VALUES ON THIS PLAT.
 ALL TEMPORARY LIMITED EASEMENTS ARE TO TERMINATE ON DECEMBER 31, 2010 OR THE DATE THE CONSTRUCTION OF THIS PROJECT IS COMPLETED, WHICHEVER COMES FIRST.
 REFER TO THE TITLE SHEET, RECORDED AS SHEET 1 OF 4 IN VOLUME OF TRANSPORTATION PROJECT PLATS, PAGE . AS DOCUMENT No. FOR ADDITIONAL INFORMATION.

APPROVED FOR
CITY OF MADISON

RELOCATION ORDER APPROVED BY THE
COMMON COUNCIL

MAY 16, 2006
DATE: _____
CITY CLERK

RELOCATION ORDER APPROVED BY THE
PLAN COMMISSION

APRIL 17, 2006
DATE: _____
EXECUTIVE SECRETARY

RELOCATION ORDER APPROVED BY THE
BOARD OF PUBLIC WORKS

MAY 3, 2006
DATE: _____
EXECUTIVE SECRETARY

Transportation Municipal Environmental Survey/GIS

I, THOMAS J. HANSEN, REGISTERED LAND SURVEYOR, HEREBY CERTIFY THAT IN FULL COMPLIANCE WITH THE PROVISIONS OF SECTION 84.095 OF THE WISCONSIN STATUTES AND UNDER THE DIRECTION OF THE DEPARTMENT, I HAVE SURVEYED AND MAPPED TRANSPORTATION PROJECT PLAT 53B0965-4.02 AND THAT SUCH PLAT CORRECTLY REPRESENTS ALL EXTERIOR BOUNDARIES OF THE SURVEYED LAND.

DATE: SEPTEMBER 18, 2006 (SIGNATURE) *Thomas J. Hansen*

THOMAS J. HANSEN
AGENT FOR KL ENGINEERING, INC.
R.L.S. NUMBER 2033

SCALE, FEET

0 100 200

RESERVED FOR REGISTER OF DEEDS
PROJECT NUMBER 53B0965-4.02
AMENDMENT NO:

ACCEPTED FOR RECORDING AND FILING IN
THE OFFICE OF THE REGISTER OF DEEDS
IN DANE COUNTY, WISCONSIN AT
... M ON ...
AS DOCUMENT # ... AND
FILED IN ...

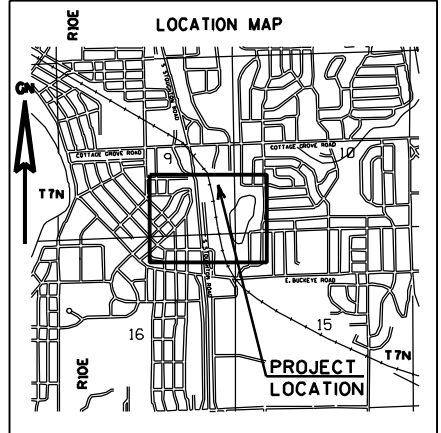
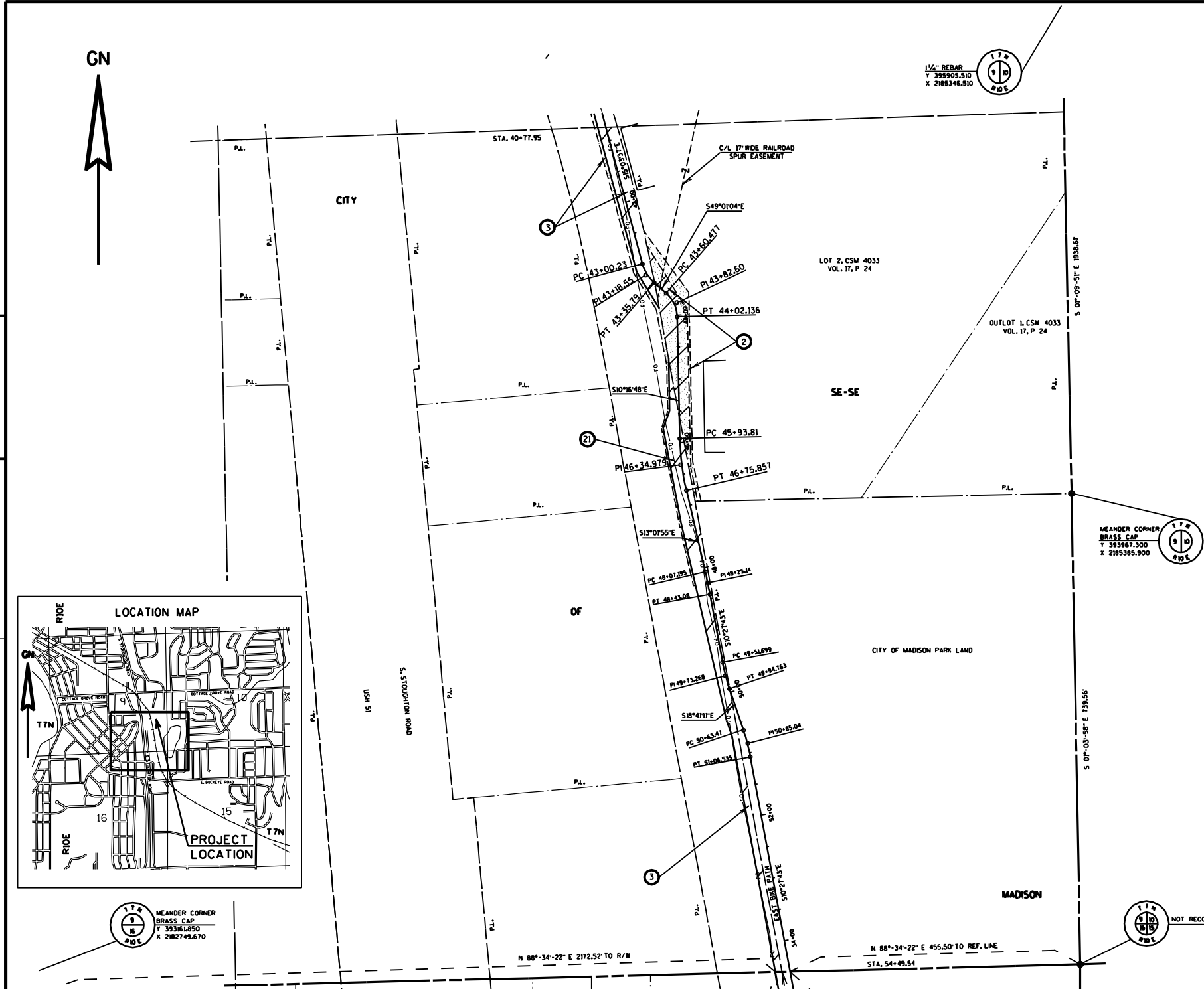
SIGNATURE OF REGISTER OF DEEDS

TRANSPORTATION PROJECT PLAT NO: 53B0965-4.03

THAT PART OF LOT 2, CSM 4033, RECORDED IN VOLUME 17 OF CERTIFIED SURVEY MAPS, ON PAGE 24, LOCATED IN THE SE¹/₄-SE¹/₄, AND A PART OF THE SE¹/₄- SE¹/₄ OF SECTION 9 T7N, R 10 E, CITY OF MADISON, DANE COUNTY, WISCONSIN

TO PROPERLY ESTABLISH, LAY OUT, WIDEN, ENLARGE, EXTEND, CONSTRUCT, RECONSTRUCT, IMPROVE, OR MAINTAIN A PORTION OF THE HIGHWAY DESIGNATED ABOVE, THE STATE OF WISCONSIN DEPARTMENT OF TRANSPORTATION DEEMS IT NECESSARY TO RELOCATE OR CHANGE SAID HIGHWAY AND ACQUIRE CERTAIN LANDS AND INTERESTS OR RIGHTS IN LANDS FOR THE ABOVE PROJECT.

TO EFFECT THIS CHANGE, PURSUANT TO AUTHORITY GRANTED UNDER SECTION 84.02 (3) AND 84.09, WISCONSIN STATUTES, THE DEPARTMENT OF TRANSPORTATION HEREBY ORDERS THAT:
 1. THAT PORTION OF SAID HIGHWAY AS SHOWN ON THIS PLAT IS LAID OUT AND ESTABLISHED TO THE LINES AND WIDTHS AS SO SHOWN FOR THE ABOVE PROJECT.
 2. THE LANDS OR INTERESTS OR RIGHTS IN LANDS AS SHOWN ON THIS PLAT ARE REQUIRED BY THE DEPARTMENT FOR THE ABOVE PROJECT AND SHALL BE ACQUIRED IN THE NAME OF THE STATE OF WISCONSIN, PURSUANT TO THE PROVISIONS OF SECTION 84.09 (1) OR (2), WISCONSIN STATUTES.



NOTES:
 COORDINATES AND BEARINGS ON THE PLAT ARE REFERENCED TO THE WISCONSIN COORDINATE SYSTEM SOUTH ZONE, NAD 27 ADJUSTMENT. THE COORDINATES SHOWN ARE GRID COORDINATES AND ARE TO BE USED AS GRID OR GROUND VALUES ON THIS PLAT.
 ALL TEMPORARY LIMITED EASEMENTS ARE TO TERMINATE ON DECEMBER 31, 2010 OR THE DATE THE CONSTRUCTION OF THIS PROJECT IS COMPLETED, WHICHEVER COMES FIRST.
 REFER TO THE TITLE SHEET, RECORDED AS SHEET 1 OF 4 IN VOLUME OF TRANSPORTATION PROJECT PLATS, PAGE , AS DOCUMENT NO. FOR ADDITIONAL INFORMATION.

CURVE DATA		CURVE DATA		CURVE DATA	
PI STA. 43+18.55	Y: 394309.922	PI STA. 43+82.60	Y: 394267.110	PI STA. 46+34.98	Y: 394012.206
X: 218417.566	X: 218476.131	X: 218472.427	X: 218472.427	X: 218472.427	X: 218472.427
Δ = 33°51'27" LT.	Δ = 47°44'15" RT.	Δ = 11°45'07" LT.	Δ = 14°19'25" D	Δ = 82°04'00" D	Δ = 41°17'00" D
D = 55+29'35"	D = 11+35'30"	D = 14+19'25"	D = 19+05'55"	D = 19+05'55"	D = 19+05'55"
L = 35.56'	L = 41.66'	L = 41.17'	L = 43.06'	L = 43.06'	L = 43.06'
T = 18.32'	T = 22.12'	T = 41.17'	T = 21.57'	T = 21.57'	T = 21.57'
R = 60.00'	R = 50.00'	R = 400.00'	R = 300.00'	R = 300.00'	R = 300.00'
PC STA. 43+00.23	PC STA. 43+60.48	PC STA. 45+93.81	PC STA. 46+75.85	PC STA. 46+75.85	PC STA. 46+75.85
PT STA. 43+35.79	PT STA. 44+02.14	PT STA. 44+02.14	PT STA. 44+02.14	PT STA. 44+02.14	PT STA. 44+02.14
LC = 35.04'	LC = 40.48'	LC = 81.30'	LC = 81.30'	LC = 81.30'	LC = 81.30'
LCB = S 32°02'20" E	LCB = S 28°08'56" E	LCB = S 07°09'22" E	LCB = S 07°09'22" E	LCB = S 07°09'22" E	LCB = S 07°09'22" E

SCHEDULE OF LANDS & INTERESTS REQUIRED

OWNERS' NAMES ARE SHOWN FOR REFERENCE PURPOSES ONLY, AND ARE SUBJECT TO CHANGE PRIOR TO TRANSFER OF LAND INTERESTS TO THE CITY OF MADISON.

PARCEL NUMBER	OWNER	INTEREST REQUIRED	AREA SQ.FT. REQUIRED			PLE SQ.FT.	TLE SQ.FT.
			NEW	EXISTING	TOTAL		
2	LANOGA CORPORATION	PLE, TLE	---	---	---	8,099	2,613
3	UNION PACIFIC RAILROAD COMPANY	FEE, TLE	23,379	---	23,379	---	3,004
21	AT&T WISCONSIN	RELEASE OF RIGHTS	---	---	---	---	---

APPROVED FOR
CITY OF MADISON

RELOCATION ORDER APPROVED BY THE
COMMON COUNCIL

MAY 16, 2006
DATE: _____ CITY CLERK

RELOCATION ORDER APPROVED BY THE
PLAN COMMISSION

APRIL 17, 2006
DATE: _____ EXECUTIVE SECRETARY

RELOCATION ORDER APPROVED BY THE
BOARD OF PUBLIC WORKS

MAY 3, 2006
DATE: _____ EXECUTIVE SECRETARY

KL Engineering
 Transportation / Municipal / Environmental Survey/GIS

I, THOMAS J. HANSEN, REGISTERED LAND SURVEYOR, HEREBY CERTIFY THAT IN FULL COMPLIANCE WITH THE PROVISIONS OF SECTION 84.095 OF THE WISCONSIN STATUTES AND UNDER THE DIRECTION OF THE DEPARTMENT, I HAVE SURVEYED AND MAPPED TRANSPORTATION PROJECT PLAT 53B0965-4.03 AND THAT SUCH PLAT CORRECTLY REPRESENTS ALL EXTERIOR BOUNDARIES OF THE SURVEYED LAND.

DATE: SEPTEMBER 18, 2006 (SIGNATURE) *Thomas J. Hansen*
 THOMAS J. HANSEN
 AGENT FOR KL ENGINEERING, INC.
 R.L.S. NUMBER 2033

SCALE, FEET
 0 50 100

RESERVED FOR REGISTER OF DEEDS
 PROJECT NUMBER 53B0965-4.03
 AMENDMENT NO: _____

ACCEPTED FOR RECORDING AND FILING IN
 THE OFFICE OF THE REGISTER OF DEEDS
 IN DANE COUNTY, WISCONSIN AT
 ... M ON ... AS DOCUMENT # ... AND
 FILED IN ...

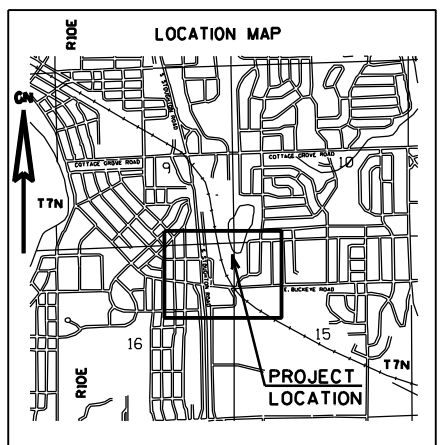
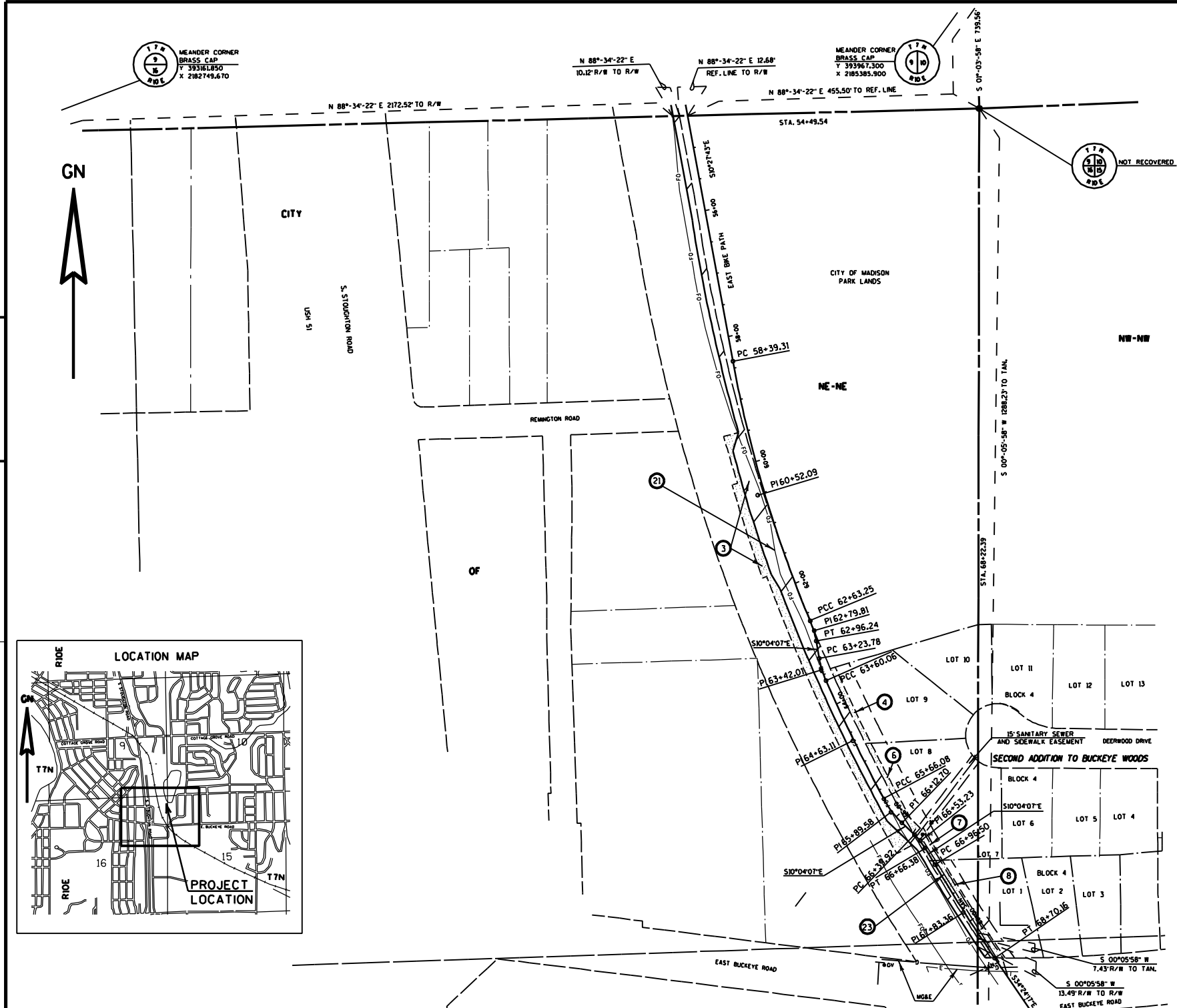
SIGNATURE OF REGISTER OF DEEDS

TRANSPORTATION PROJECT PLAT NO: 53B0965-4.04

THAT PART OF THE NE¹/₄- NE¹/₄ AND THE SE¹/₄- NE¹/₄ OF SECTION 16, THE NW¹/₄- NW¹/₄ AND THE SW¹/₄- NW¹/₄ OF SECTION 15, AND PART OF LOTS 1, 7, 8 AND 9, BLOCK 4, SECOND ADDITION TO BUCKEYE WOODS, 2, LOCATED IN THE NW¹/₄- NW¹/₄, AND THE SW¹/₄- NW¹/₄ OF SECTION 15, AND THE NE¹/₄ - NE¹/₄ OF SECTION 16, T7N, R 10 E, CITY OF MADISON, DANE COUNTY, WISCONSIN

TO PROPERLY ESTABLISH, LAY OUT, WIDEN, ENLARGE, EXTEND, CONSTRUCT, RECONSTRUCT, IMPROVE, OR MAINTAIN A PORTION OF THE HIGHWAY DESIGNATED ABOVE, THE STATE OF WISCONSIN DEPARTMENT OF TRANSPORTATION DEEMS IT NECESSARY TO RELOCATE OR CHANGE SAID HIGHWAY AND ACQUIRE CERTAIN LANDS AND INTERESTS OR RIGHTS IN LANDS FOR THE ABOVE PROJECT.

TO EFFECT THIS CHANGE, PURSUANT TO AUTHORITY GRANTED UNDER SECTION 84.02 (3) AND 84.09, WISCONSIN STATUTES, THE CITY OF MADISON HEREBY ORDERS THAT:
 1. THAT PORTION OF SAID HIGHWAY AS SHOWN ON THIS PLAT IS LAID OUT AND ESTABLISHED TO THE LINES AND WIDTHS AS SO SHOWN FOR THE ABOVE PROJECT.
 2. THE LANDS OR INTERESTS OR RIGHTS IN LANDS AS SHOWN ON THIS PLAT ARE REQUIRED BY THE DEPARTMENT FOR THE ABOVE PROJECT AND SHALL BE ACQUIRED IN THE NAME OF THE STATE OF WISCONSIN, PURSUANT TO THE PROVISIONS OF SECTION 84.09 (1) OR (2), WISCONSIN STATUTES.



SCHEDULE OF LANDS & INTERESTS REQUIRED

OWNERS' NAMES ARE SHOWN FOR REFERENCE PURPOSES ONLY, AND ARE SUBJECT TO CHANGE PRIOR TO TRANSFER OF LAND INTERESTS TO THE CITY OF MADISON.

PARCEL NUMBER	OWNER	INTEREST REQUIRED	AREA SQ.FT. REQUIRED			PLE SQ.FT.	TLE SQ.FT.
			NEW	EXISTING	TOTAL		
3	UNION PACIFIC RAILROAD COMPANY	FEE, TLE	33,544	---	33,544	---	9,240
4	DUANE J. & NANCY R. BESZAK	TLE	---	---	---	---	1,045
6	JAMES S. & MARIE SEREN COHEN	PLE, TLE	---	---	---	396	983
7	ANDREW N. ZABIT	TLE	---	---	---	---	912
8	GARY D. & DIANE R. WALES	TLE	---	---	---	---	3,254
21	AT&T	RELEASE OF RIGHTS	---	---	---	---	---
23	CITY OF MADISON - SANTARY SEWER	RELEASE OF RIGHTS	---	---	---	---	---

CURVE DATA		CURVE DATA		CURVE DATA		CURVE DATA	
PI STA.	PC STA.	PI STA.	PC STA.	PI STA.	PC STA.	PI STA.	PC STA.
60+52.08	62+79.81	62+79.81	63+42.01	63+42.01	67+83.36	67+83.36	67+83.36
392623.995	394267.110	394267.110	392951.006	392951.006	391972.376	391972.376	391972.376
2185053.717	2185142.099	2185142.099	2185152.996	2185152.996	2185375.006	2185375.006	2185375.006
12°12'21" LT.	12°35'58" RT.	13°51'21" LT.	13°51'21" LT.	13°51'21" LT.	03°51'27" LT.	03°51'27" LT.	03°51'27" LT.
Δ = 12°12'21" LT.	Δ = 12°35'58" RT.	Δ = 13°51'21" LT.	Δ = 13°51'21" LT.	Δ = 13°51'21" LT.	Δ = 03°51'27" LT.	Δ = 03°51'27" LT.	Δ = 03°51'27" LT.
D = 121.54'	D = 138.11'	D = 138.11'	D = 138.11'	D = 138.11'	D = 138.11'	D = 138.11'	D = 138.11'
L = 423.94'	L = 32.38'	L = 36.28'	L = 36.28'	L = 36.28'	L = 26.46'	L = 26.46'	L = 26.46'
T = 212.77'	T = 16.56'	T = 18.23'	T = 18.23'	T = 18.23'	T = 86.86'	T = 86.86'	T = 86.86'
R = 1990.00'	R = 150.00'	R = 150.00'	R = 150.00'	R = 150.00'	R = 2823.28'	R = 2823.28'	R = 2823.28'
PCC STA. 58+39.31	PCC STA. 62+63.25	PCC STA. 63+23.78	PCC STA. 63+23.78	PCC STA. 63+23.78	PCC STA. 66+39.92	PCC STA. 66+39.92	PCC STA. 66+39.92
PCC STA. 62+63.25	PCC STA. 62+63.25	PCC STA. 63+60.06	PCC STA. 63+60.06	PCC STA. 63+60.06	PCC STA. 66+86.38	PCC STA. 66+86.38	PCC STA. 66+86.38
LC = 423.14'	LC = 32.92'	LC = 36.19'	LC = 36.19'	LC = 36.19'	LC = 26.38'	LC = 26.38'	LC = 26.38'
LCB = S 16°33'53" E	LCB = S 16°22'05" E	LCB = S 16°59'47" E	LCB = S 16°59'47" E	LCB = S 16°59'47" E	LCB = S 32°38'34" E	LCB = S 32°38'34" E	LCB = S 32°38'34" E

NOTES:
 COORDINATES AND BEARINGS ON THE PLAT ARE REFERENCED TO THE WISCONSIN COORDINATE SYSTEM SOUTH ZONE, NAD 27 ADJUSTMENT. THE COORDINATES SHOWN ARE GRID COORDINATES AND ARE TO BE USED AS GRID OR GROUND VALUES ON THIS PLAT.
 ALL TEMPORARY LIMITED EASEMENTS ARE TO TERMINATE ON DECEMBER 31, 2010 OR THE DATE THE CONSTRUCTION OF THIS PROJECT IS COMPLETED, WHICHEVER COMES FIRST.
 REFER TO THE TITLE SHEET, RECORDED AS SHEET 1 OF 4 IN VOLUME OF TRANSPORTATION PROJECT PLATS, PAGE , AS DOCUMENT No. FOR ADDITIONAL INFORMATION.

APPROVED FOR CITY OF MADISON

RELOCATION ORDER APPROVED BY THE COMMON COUNCIL

MAY 16, 2006 DATE: CITY CLERK

RELOCATION ORDER APPROVED BY THE PLAN COMMISSION

APRIL 17, 2006 DATE: EXECUTIVE SECRETARY

RELOCATION ORDER APPROVED BY THE BOARD OF PUBLIC WORKS

MAY 3, 2006 DATE: EXECUTIVE SECRETARY

KL Engineering
 Transportation Municipal Environmental Survey/GIS

I, THOMAS J. HANSEN, REGISTERED LAND SURVEYOR, HEREBY CERTIFY THAT IN FULL COMPLIANCE WITH THE PROVISIONS OF SECTION 84.095 OF THE WISCONSIN STATUTES AND UNDER THE DIRECTION OF THE DEPARTMENT, I HAVE SURVEYED AND MAPPED TRANSPORTATION PROJECT PLAT 53B0965-4.04 AND THAT SUCH PLAT CORRECTLY REPRESENTS ALL EXTERIOR BOUNDARIES OF THE SURVEYED LAND.

DATE: SEPTEMBER 18, 2006 (SIGNATURE) *Thomas J. Hansen*

THOMAS J. HANSEN
 AGENT FOR KL ENGINEERING, INC.
 R.L.S. NUMBER 2033

SCALE, FEET
 0 100 200

RESERVED FOR REGISTER OF DEEDS
 PROJECT NUMBER 53B0965-4.04
 AMENDMENT NO:

ACCEPTED FOR RECORDING AND FILING IN THE OFFICE OF THE REGISTER OF DEEDS IN DANE COUNTY, WISCONSIN AT _____ M ON _____ AS DOCUMENT # _____ AND FILED IN _____

SIGNATURE OF REGISTER OF DEEDS