

City of Madison Transportation & Health Tool Indicators At the Planning District Level

BY: KIRSTEN BROSE, DANIEL HANDEL, JAMES MARKOSIAN,
ELI MILLER & CHELSEA MORRISON

Background



Transportation and Health Tool



Photo credit: www.pedbikeimages.org / Laura Sandt

Background

Client: Madison Sustainability Committee

Project: Use Transportation & Health Tool as a basis for developing a similar tool for Madison

- Issues of Scale
- Data Availability
- Data Applicability at Planning District Level
- Create foundation for the City of Madison to allocate funds

ACTIVE LIVING

- Use of Federal Funding for Bike & Pedestrian Facilities
- Commute Mode Share
- Complete Streets Policy
- Public Transit Trips Per Capita
- Physical Activity from Transportation

INDIRECT IMPACTS

- Proximity to Major Roadways
- Person Miles Traveled by Mode

SAFETY

- Seat Belt Use
- Alcohol-Impaired Fatalities
- Road Traffic Fatalities By Mode
- Road Traffic Fatality Exposure Rate

ACCESS TO SERVICES

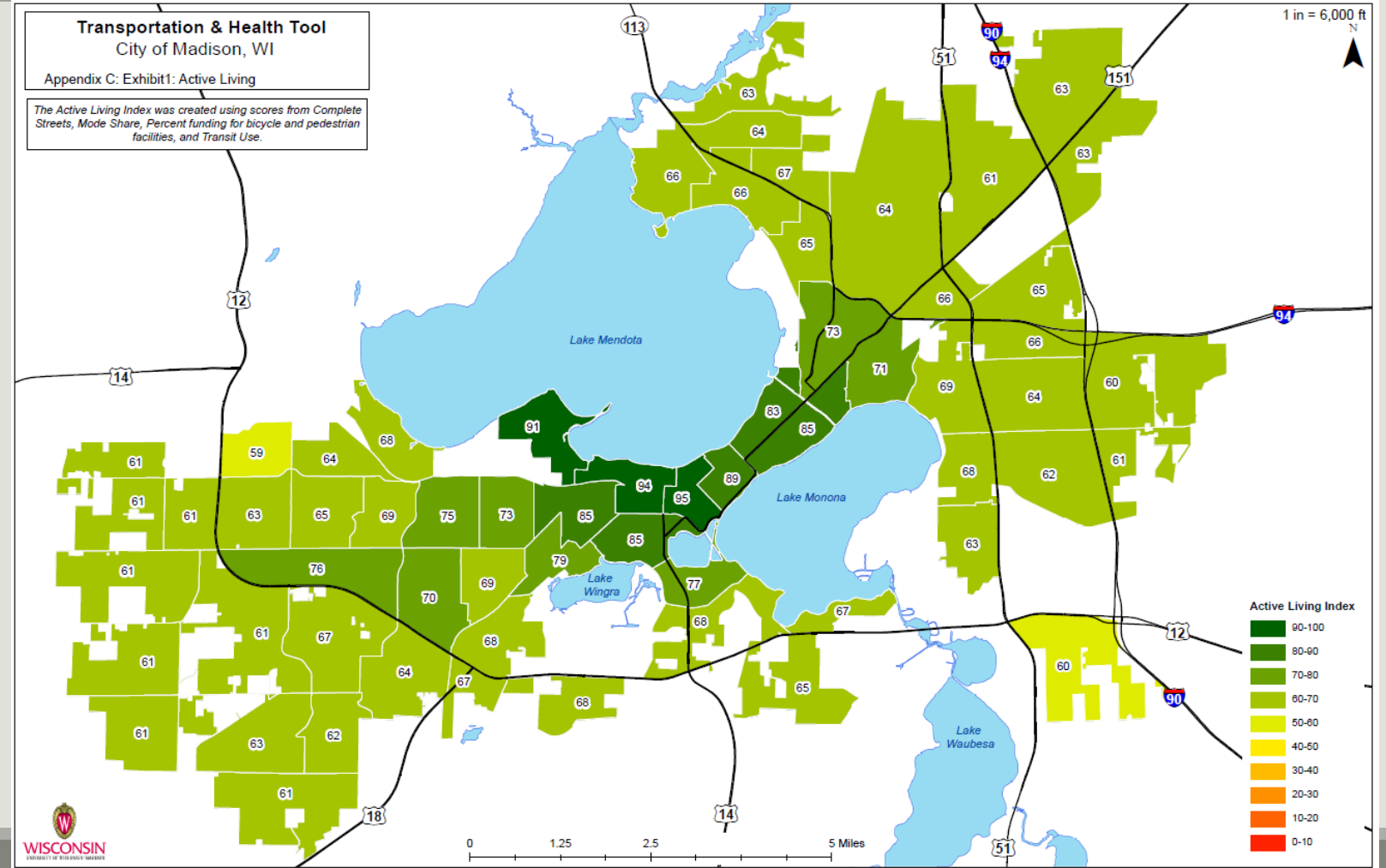
- Housing & Transportation Affordability
- Vehicle Miles Traveled
- Land Use Mix

Active Living

- Complete Streets; Yes or No Policy. City-wide.
- Funding for Bike & Pedestrian Facilities; Percentage of City of Madison budget. City-wide.
- Commute Mode Share; Percentage who commute to work non-auto.
- Public Transit Trips per Capita; Annual household trips, from Housing & Transportation Affordability Initiative.

Active Living

Category	Importance
Complete Streets	High
Mode Share	Medium
% of Funds for Bike/Ped Features	Low
Transit	Low



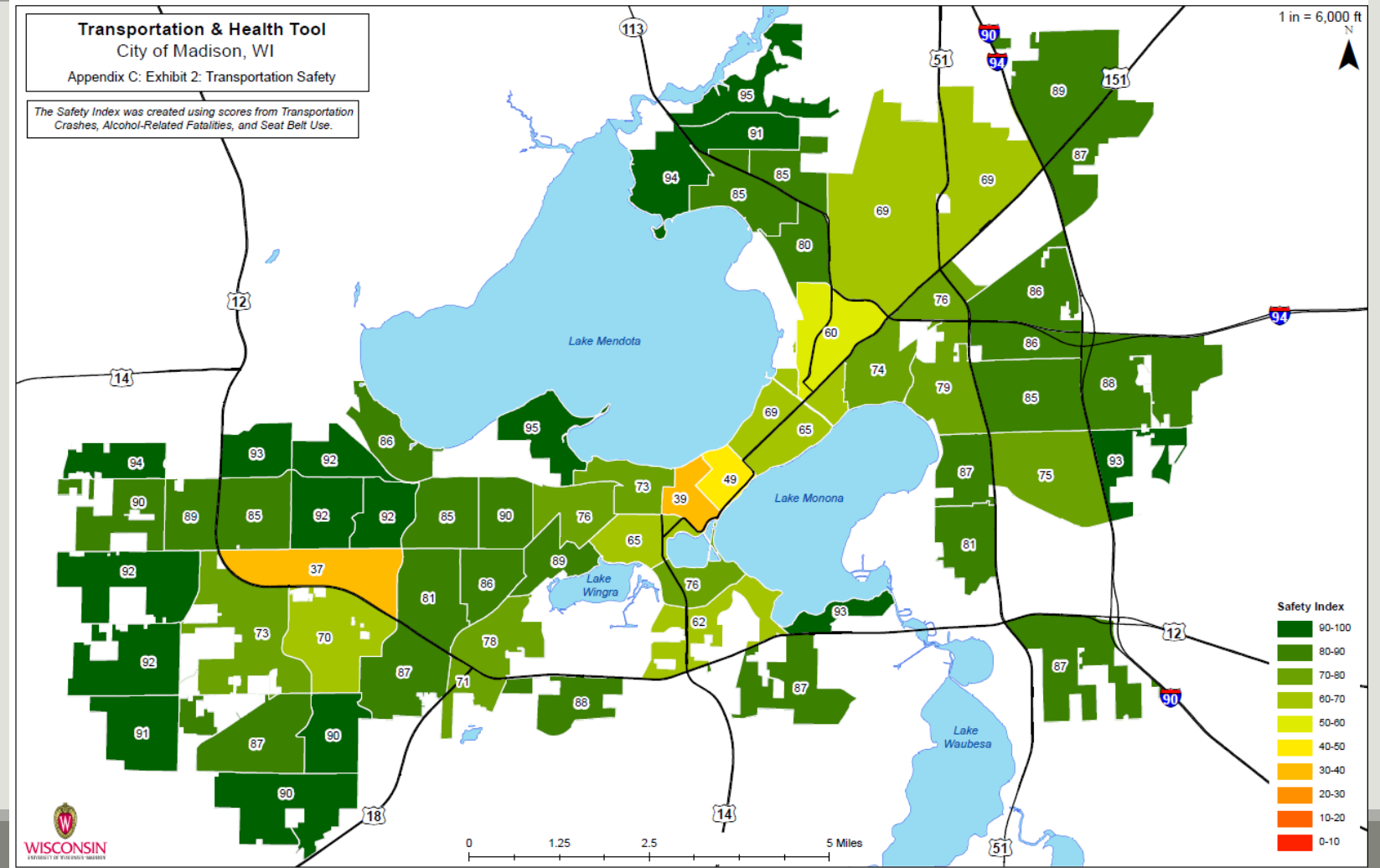
Safety

Data obtained from University of Wisconsin-Madison Traffic Operations and Safety (TOPS) Lab

- Seat Belt Use
- Alcohol Impaired Fatalities; City-wide, due to minimal number of fatalities
- Crashes within each Planning District

Safety

Category	Importance
Road Traffic Crashes	High
Alcohol Fatalities	Medium
Seat Belt Use	Low

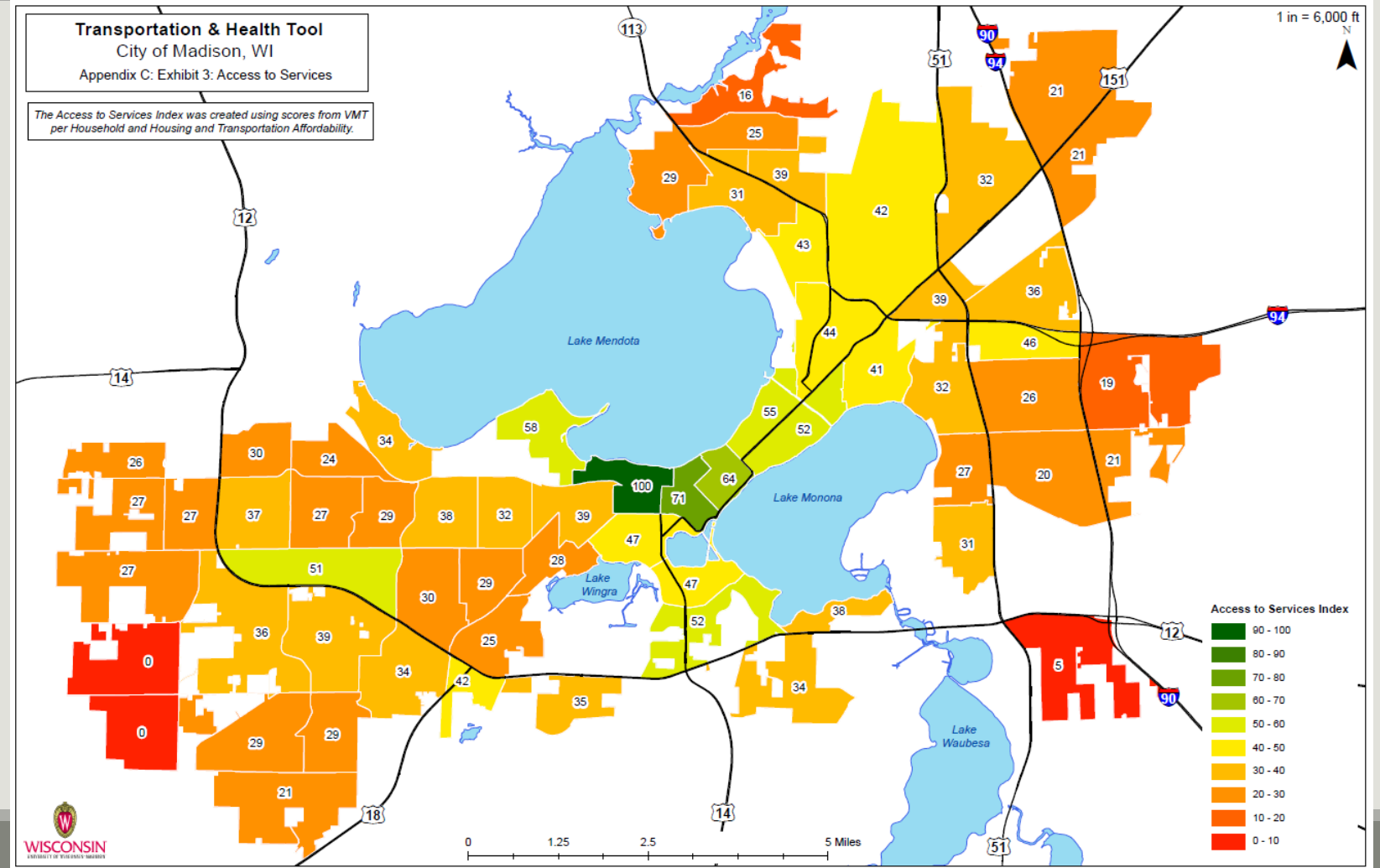


Access to Services

- Housing & Transportation Affordability; Percentage income spend on housing & transportation from Housing and Transportation Affordability Initiative
- Vehicle miles traveled; annual VMT per household

Access to Services

Category	Importance
VMT per Household	High
Housing & Transportation Affordability	Low

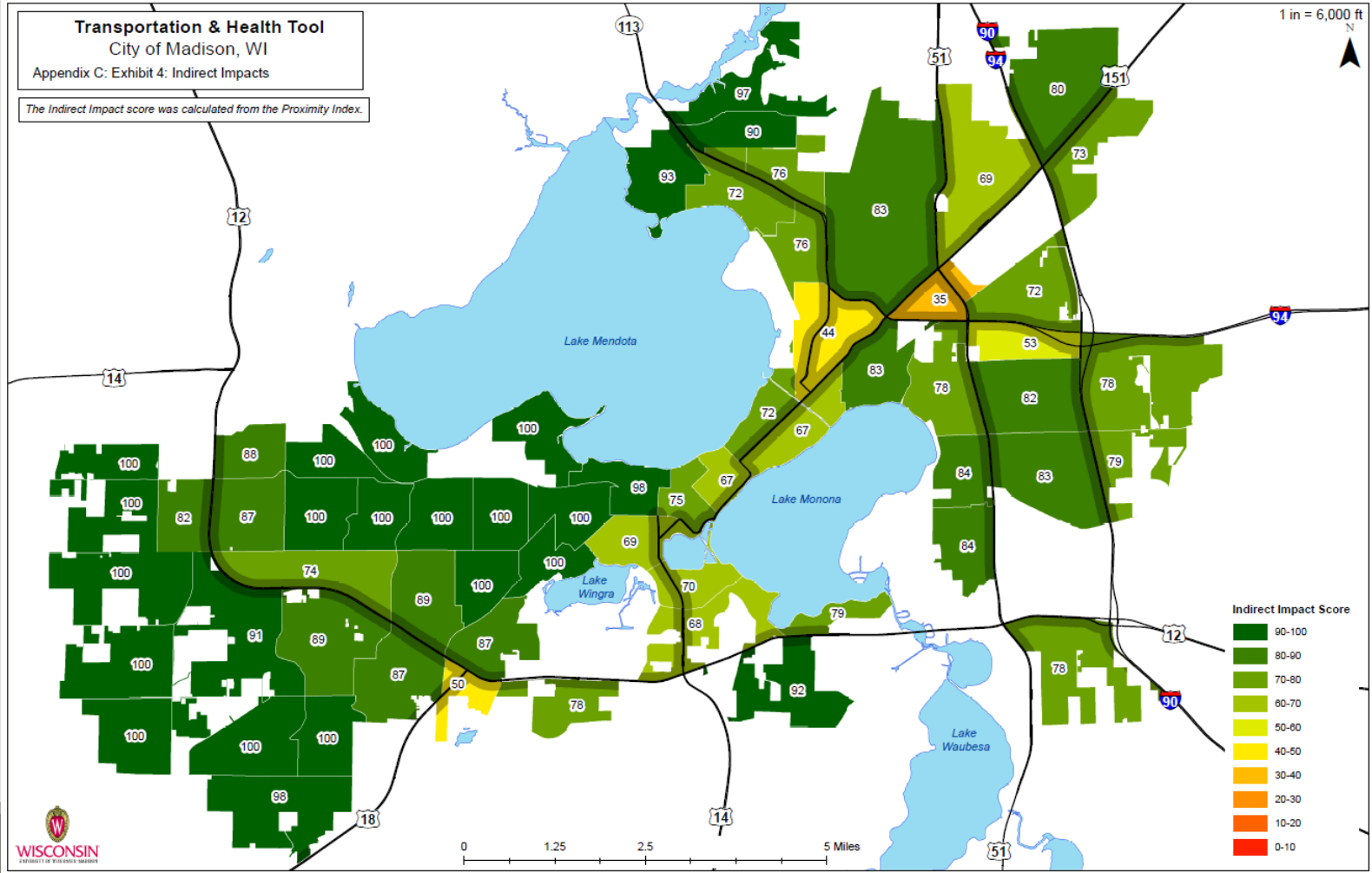


Indirect Impacts

- Proximity to Major Roadways; Percentage of district outside of the 200 meter buffer from U.S. Highways, State Highways & Interstates

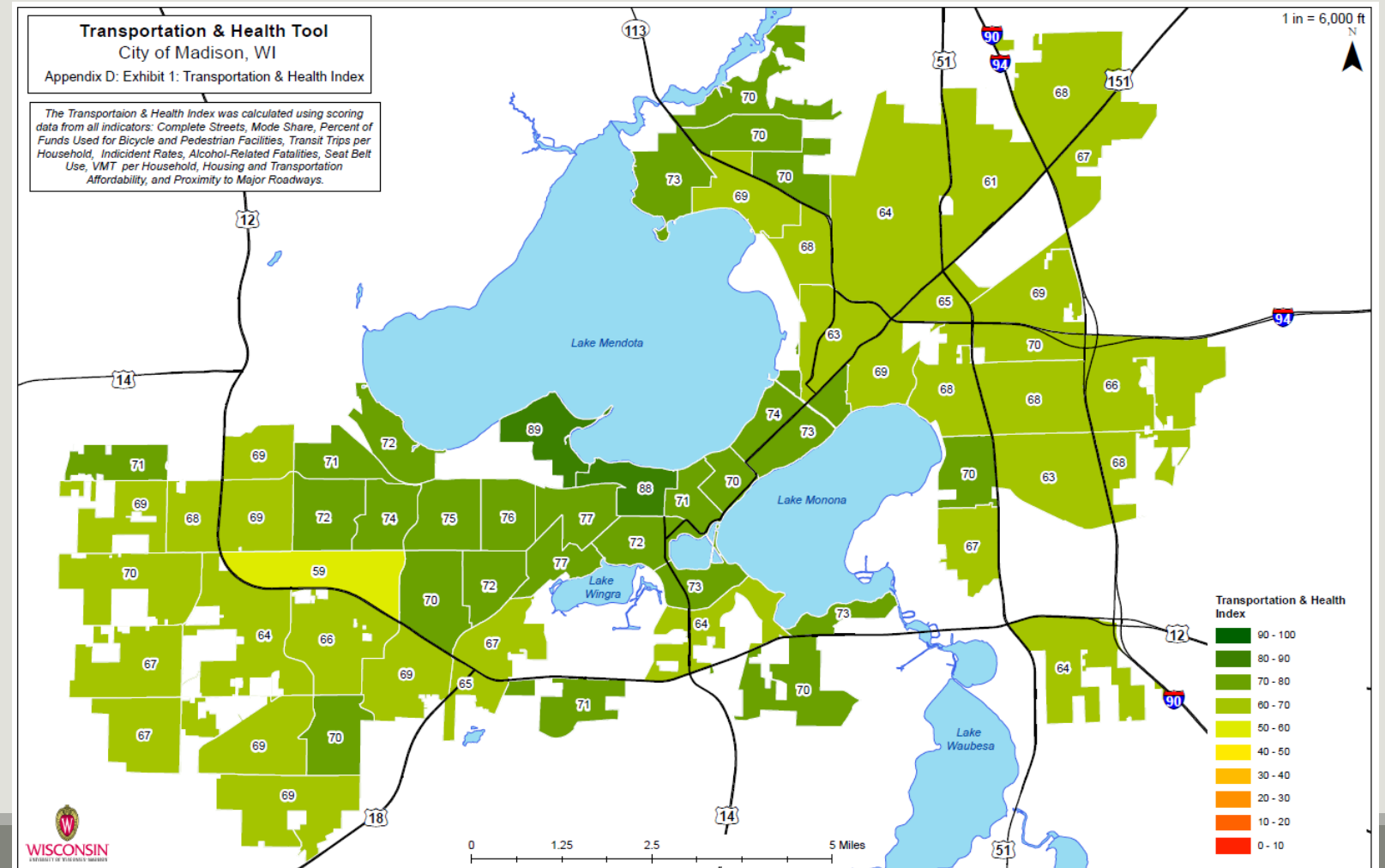
Indirect Impacts

Category	Priority Weights
Proximity to Major Roadways	High



Transportation & Health Index

Category	Priority Weight
Active Living	High
Safety	Medium-High
Access to Services	Medium-Low
Indirect Impacts	Low



Future Work

- Obtain all the data that was not available to complete the City of Madison tool to the same depth as the THT
 - Physical Activity from Transportation
 - Person Miles Traveled by Mode
 - Road Traffic Fatality Exposure Rate
 - Land Use Mix
- Additionally, prepare a set of best practices so that this method could be implemented in other cities across the country.

Recommendations

- Update the tool on a five year basis to observe and track changes
- City of Madison policy makers use the tool to supplement future decision-making

Questions?
