

PLE: 629 SQ. FT.



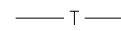
TLE SLOPING & GRADING (S/G): 4,630 SQ. FT.



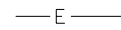
EXISTING EASEMENTS



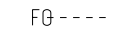
BUILDING SETBACK



UNDERGROUND TELEPHONE



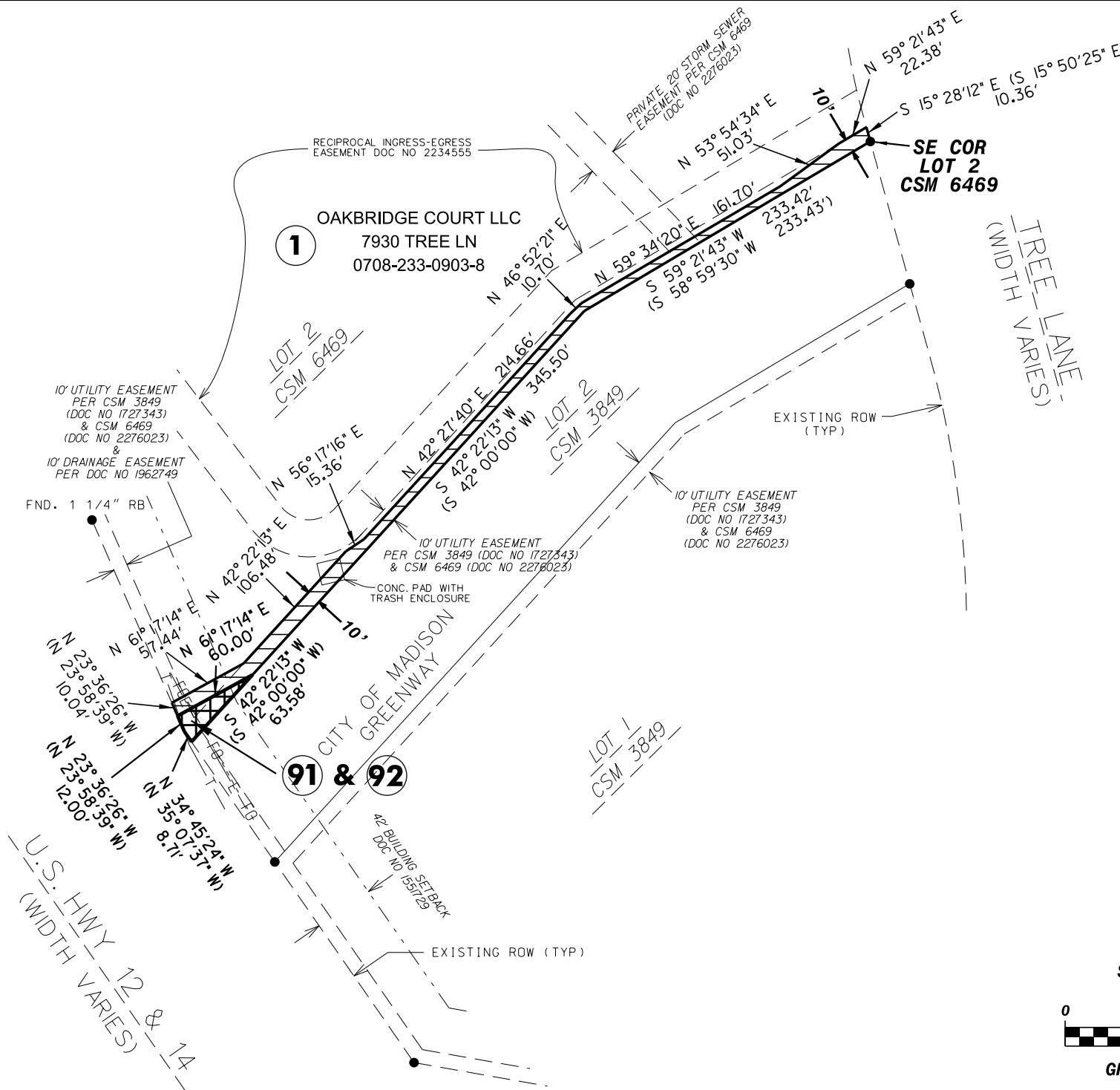
UNDERGROUND ELECTRIC



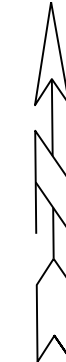
UNDERGROUND FIBER OPTIC



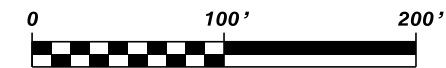
FOUND 3/4" REBAR (UNLESS SPECIFIED)



WCCS DANE ZONE
S LINE OF THE SW 1/4, SEC 23, T7N-R8E
BEARS: N 89° 09' 46" E, 2654.21'



SCALE: 1"=100 FEET



GRAPHIC SCALE (feet)

SCHEDULE OF INTERESTS REQUIRED

PARCEL	OWNER NAME	RECORDED DOC. NO.	PLE AREA REQUIRED	TLE (S/G) AREA REQUIRED	TEMP. REL. OF RIGHTS	CONSENT TO OCCUPY
①	OAKBRIDGE COURT LLC	5091133	629 SQ FT 0.014 ACRES	4,630 SQ FT 0.106 ACRES		
⑨1	ALLIANT ENERGY CORP.	2276023 & 1727343			100 SQ FT 0.0023 ACRES	190 SQ FT 0.0044 ACRES
⑨1	TDS TELECOM	2276023 & 1727343			100 SQ FT 0.0023 ACRES	190 SQ FT 0.0044 ACRES
⑨1	CHARTER COMMUNICATIONS	2276023 & 1727343			100 SQ FT 0.0023 ACRES	190 SQ FT 0.0044 ACRES
⑨2	OAKBRIDGE COURT LLC	1962749			100 SQ FT 0.0023 ACRES	190 SQ FT 0.0044 ACRES

**CITY OF MADISON
RELOCATION ORDER**

"PLAT OF LAND INTERESTS REQUIRED FOR THE CONSTRUCTION OF IMPROVEMENTS FOR PUBLIC STORM DRAINAGE", PART OF LOT 2, CSM 6469, BEING LOCATED IN THE SW 1/4 OF THE SW 1/4, OF SEC 23, T 7 N, R 8 E, CITY OF MADISON, DANE COUNTY, WI.

CITY ENGINEERING DIVISION
PROJECT NO. Munis 10310
REAL ESTATE PROJECT NO. 10899
COUNTY CLERK FILE NO. _____

OCTOBER 27, 2015 djs
REV.

RELOCATION ORDER APPROVED
BY THE COMMON COUNCIL:

CITY CLERK

DATE

RELOCATION ORDER APPROVED
BY THE BOARD OF PUBLIC WORKS:

EXECUTIVE SECRETARY

DATE

RELOCATION ORDER APPROVED
BY THE PLAN COMMISSION:

EXECUTIVE SECRETARY

DATE

PLOT SCALE:

PLOT NAME:

REV. DATE:

ORIGINATOR: