

**APPLICATION FOR
URBAN DESIGN COMMISSION
REVIEW AND APPROVAL**

AGENDA ITEM # _____

Project # _____

DATE SUBMITTED: <u>9.28.11</u>	Action Requested
UDC MEETING DATE: <u>10.19.11</u>	<input type="checkbox"/> Informational Presentation
	<input type="checkbox"/> Initial Approval and/or Recommendation
	<input checked="" type="checkbox"/> Final Approval and/or Recommendation

PROJECT ADDRESS: 6610 Seybold Rd.

ALDERMANIC DISTRICT: 1

OWNER/DEVELOPER (Partners and/or Principals) ARCHITECT/DESIGNER/OR AGENT:
Erik's Bike Shop Grant Signs
9201 Penn Ave. South 5119 Terminal Dr.
Bloomington, MN 55431 McFarland, WI 53558

CONTACT PERSON: Eric Marty
Address: 5119 Terminal Dr.
McFarland, WI 53558
Phone: 608.838.7794
Fax: 608.838.7798
E-mail address: emarty@signproductions.com

TYPE OF PROJECT:

(See Section A for:)

- Planned Unit Development (PUD)
 - General Development Plan (GDP)
 - Specific Implementation Plan (SIP)
- Planned Community Development (PCD)
 - General Development Plan (GDP)
 - Specific Implementation Plan (SIP)
- Planned Residential Development (PRD)
- New Construction or Exterior Remodeling in an Urban Design District * (A public hearing is required as well as a fee)
- School, Public Building or Space (Fee may be required)
- New Construction or Addition to or Remodeling of a Retail, Hotel or Motel Building Exceeding 40,000 Sq. Ft.
- Planned Commercial Site

(See Section B for:)

- New Construction or Exterior Remodeling in C4 District (Fee required)

(See Section C for:)

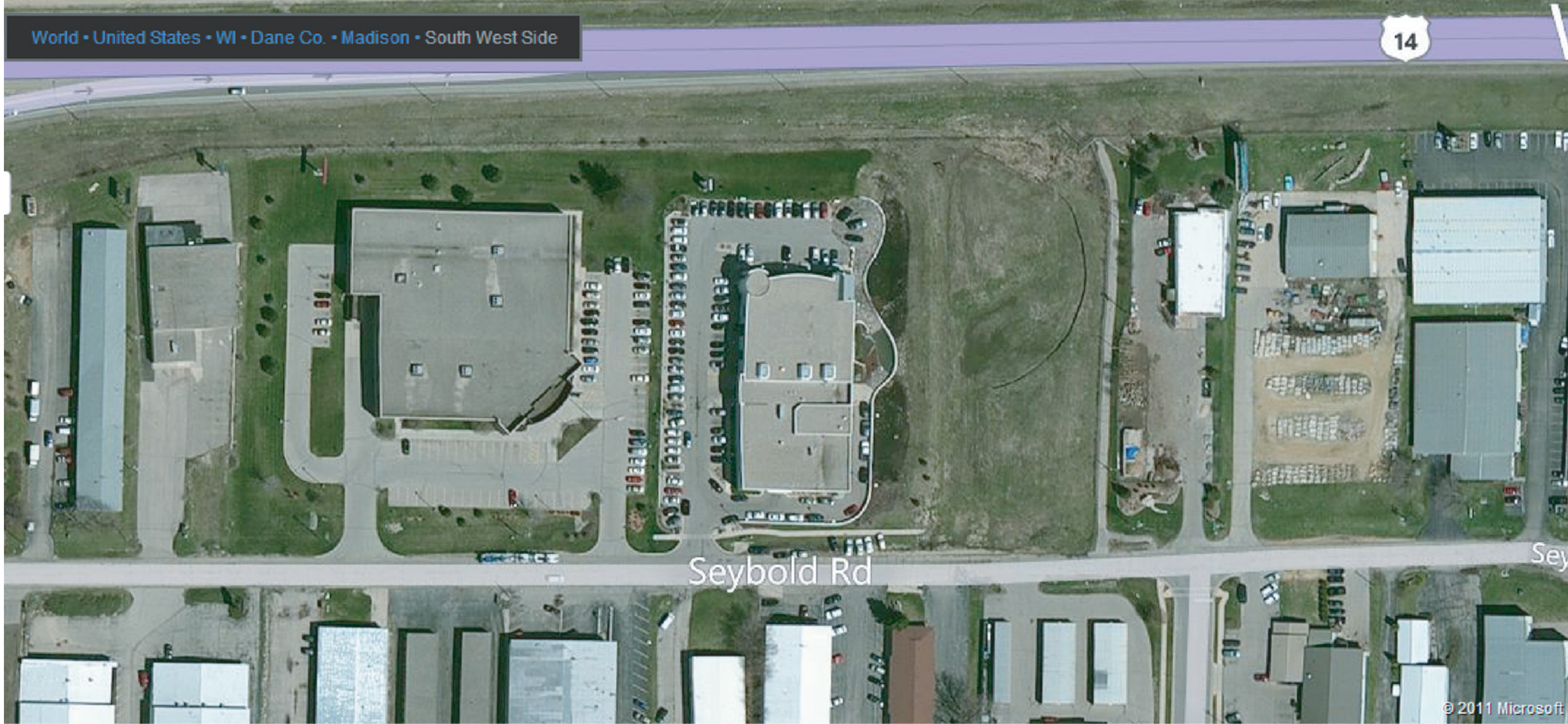
- R.P.S.M. Parking Variance (Fee required)

(See Section D for:)

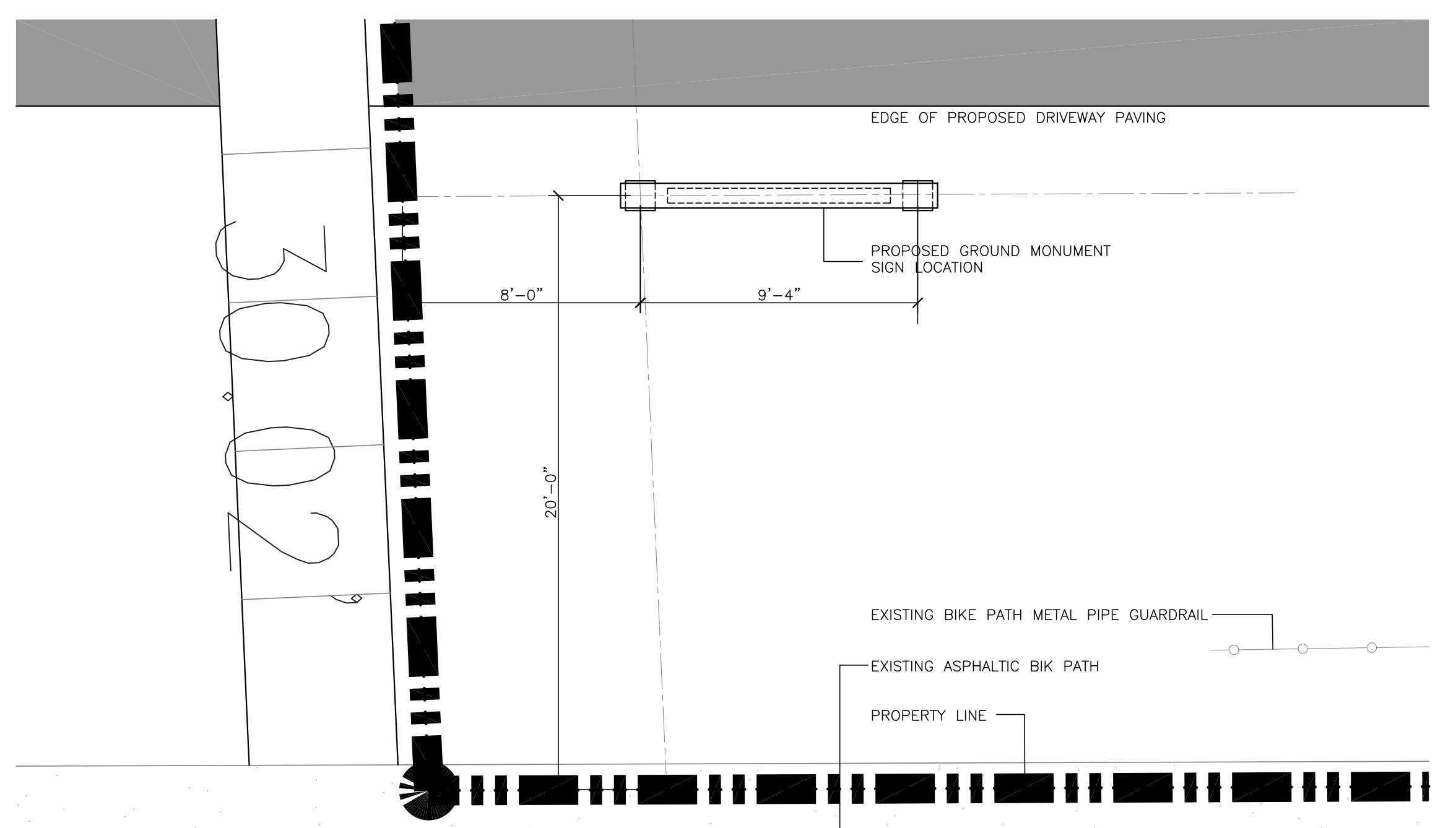
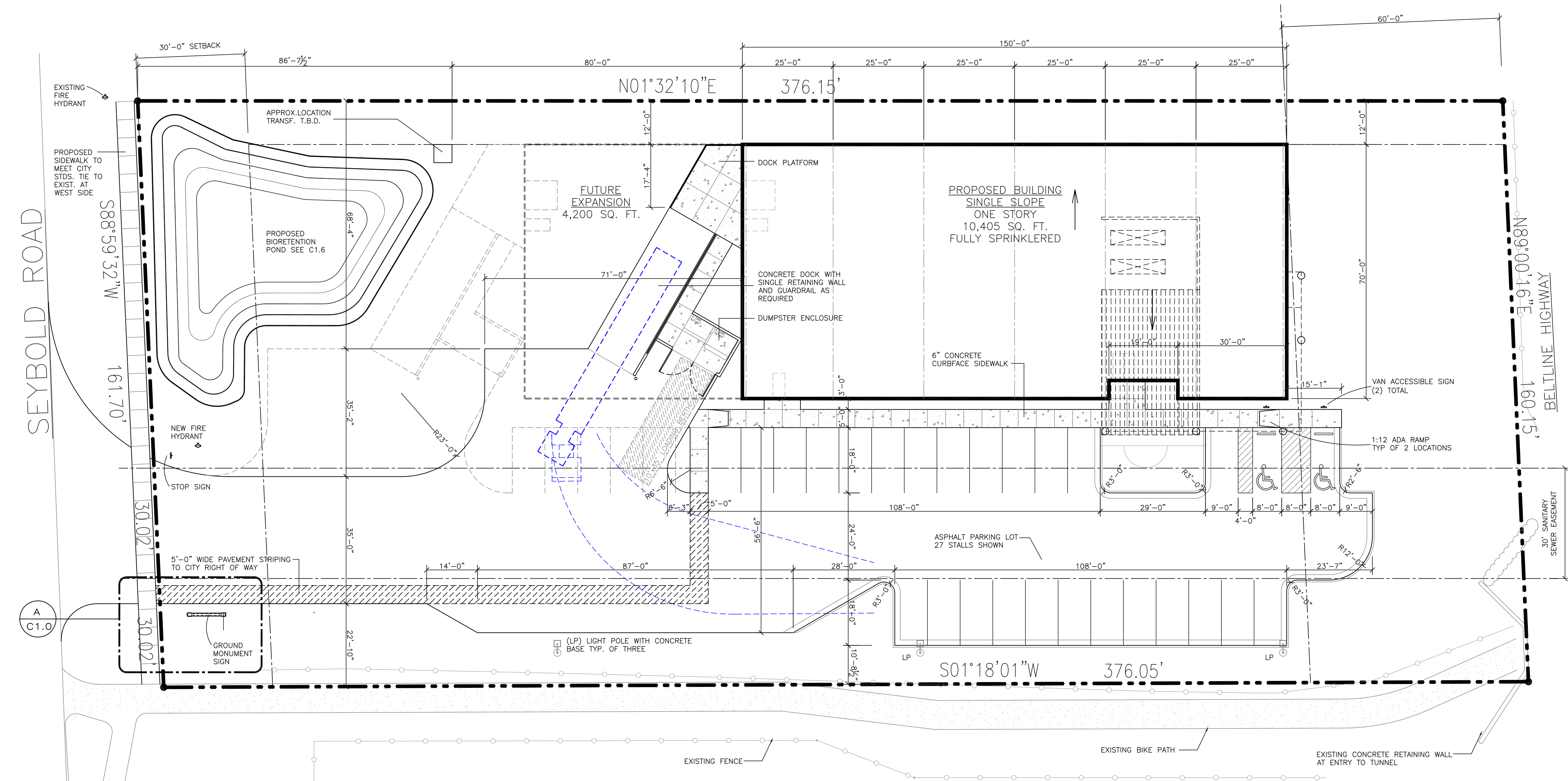
- Comprehensive Design Review* (Fee required)
- Street Graphics Variance* (Fee required)
- Other _____

*Public Hearing Required (Submission Deadline 3 Weeks in Advance of Meeting Date)

Where fees are required (as noted above) they apply with the first submittal for either initial or final approval of a project.

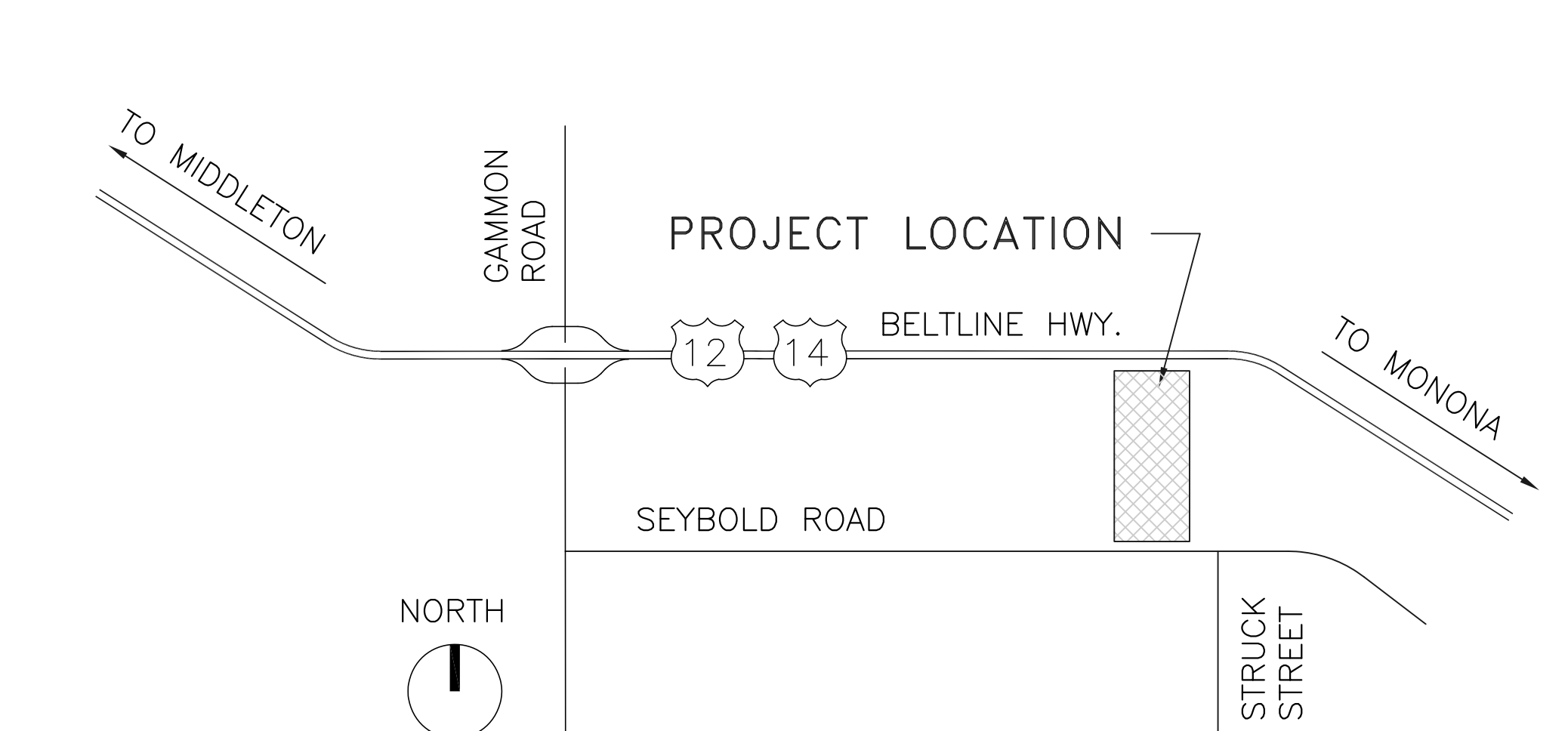


Seybold Rd



MONUMENT SIGN LOCATION
SCALE : 1/4" = 1'-0"

SITE PLAN
SCALE: 1/16" = 1'-0"



SITE LOCATION MAP

REVISIONS		
#	Date	Description

DESIGN ARCHITECT

ZINGG DESIGN

DESIGN ARCHITECT
INTERIOR DESIGN
PLANNING

6603 University Avenue
Middleton, Wisconsin 53562
Ph: 608.836.1128
F: 608.836.1148
www.zinggdesign.com

GENERAL CONTRACTOR

Renschler

THE RENSCHLER COMPANY
555 D'Onofrio Drive, Suite 275
Madison, WI 53719
PH 608.833.2321
Contact: Mike Schoonveld
www.renschler.com

CONSULTANTS

THE CAREY GROUP
Real Estate Services, LLC
2801 Coho Street, Suite 101
Madison, WI 53713
PH 608.310.7400
F 608.237.2028
Contact: Kevin / Tim Carey
www.thecareygroup.net

PROJECT

BIKE SHOP

6610 SEYBOLD ROAD
MADISON, WI

SHEET TITLE

PROPOSED
SITE PLAN

NOTES

DATE: 09/07/11
PROJECT NO: 1110
DRAWN BY: FH
SCALE: SEE DRAWING

NOTE: THESE DRAWINGS ARE THE PROPERTY OF ZINGG DESIGN INC. AND CANNOT BE USED IN WHOLE OR PART WITHOUT THE EXPRESSED WRITTEN CONSENT BY ZINGG DESIGN.

SHEET NUMBER

C1.0

ZINGG DESIGN, INC. ©2011

REVISIONS		
#	Date	Description

DESIGN ARCHITECT



ZINGG
DESIGN ARCHITECT
INTERIOR DESIGN
PLANNING

6603 University Avenue
Middleton, Wisconsin 53562
Ph: 608.836.1128
F: 608.836.1148
www.zinggdesign.com

GENERAL CONTRACTOR




Renschler

THE RENSCHLER COMPANY
555 D'Onofrio Drive, Suite 275
Madison, WI 53719
PH 608.833.2321
Contact: Mike Schoonveld
www.renschler.com

CONSULTANTS

THE CAREY GROUP
Real Estate Services, LLC
2801 Coho Street, Suite 101
Madison, WI 53713
PH 608.310.7400
F 608.237.2028
Contact: Kevin / Tim Carey
www.thecareygroup.net

PROJECT



BIKE SHOP

6610 SEYBOLD ROAD
MADISON, WI

SHEET TITLE

PROPOSED
FLOOR PLAN

NOTES

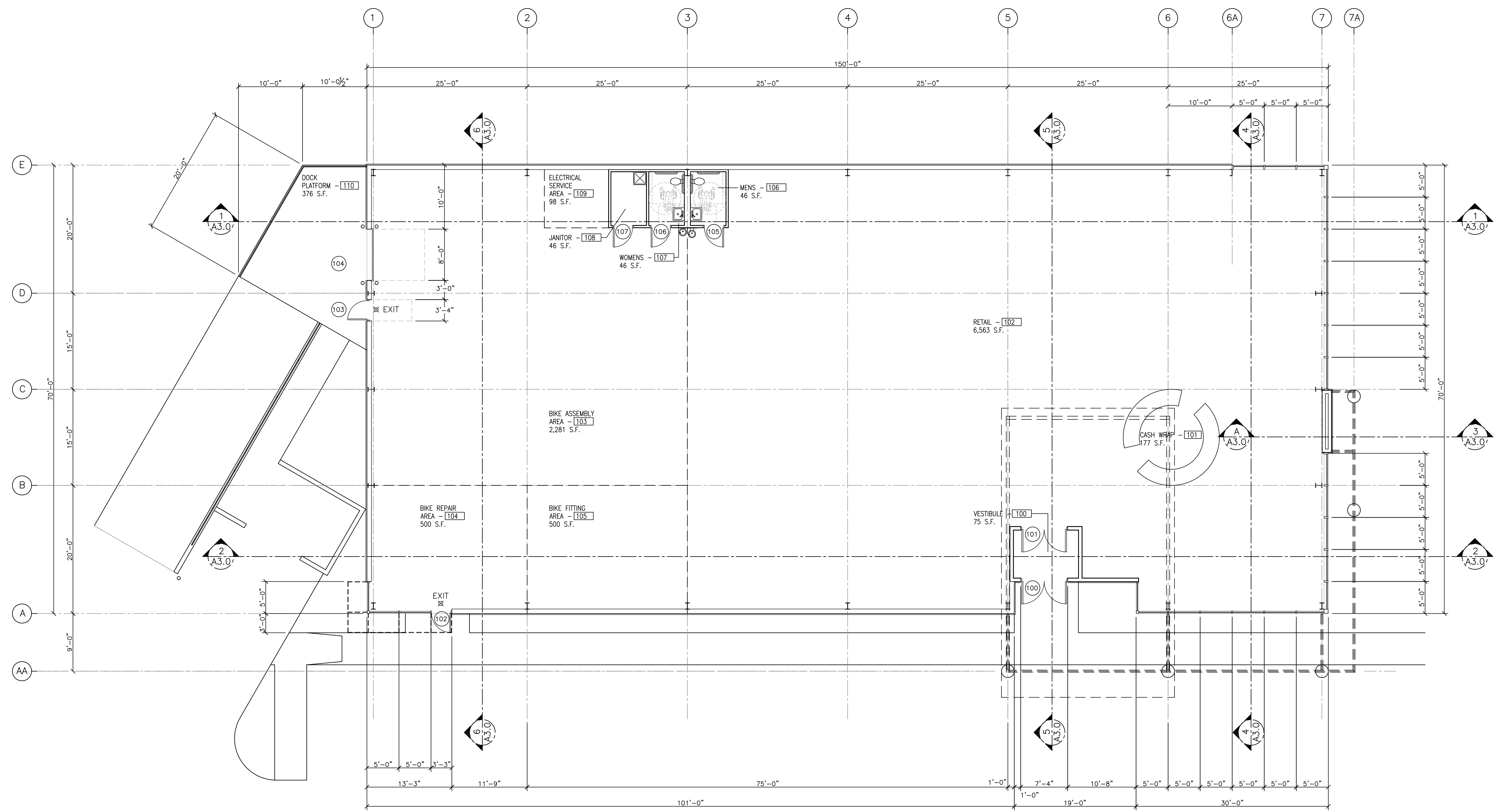
DATE: 09/23/11
PROJECT NO.: 1110
DRAWN BY: FH
SCALE: SEE DRAWING

NOTE: THESE DRAWINGS ARE THE PROPERTY OF ZINGG DESIGN INC. AND CANNOT BE USED IN WHOLE OR PART WITHOUT THE EXPRESSED WRITTEN CONSENT BY ZINGG DESIGN.

SHEET NUMBER

A1.0

ZINGG DESIGN, INC. ©2011



PRELIMINARY AND SUBJECT TO ALL JURISDICTIONAL REVIEW

REVISIONS		
#	Date	Description

DESIGN ARCHITECT



ZINGG
DESIGN INC.

DESIGN ARCHITECT
INTERIOR DESIGN
PLANNING

6603 University Avenue
Middleton, Wisconsin 53562
Ph: 608.836.1128
F: 608.836.1148
www.zinggdesign.com

GENERAL CONTRACTOR



Renschler

THE RENSCHLER COMPANY
555 D'Onofrio Drive, Suite 275
Madison, WI 53719
PH 608.833.2321
Contact: Mike Schoonveld
www.renschler.com

CONSULTANTS

THE CAREY GROUP
Real Estate Services, LLC
2801 Coho Street, Suite 101
Madison, WI 53713
PH 608.310.7400
F 608.237.2028
Contact: Kevin / Tim Carey
www.thecareygroup.net

PROJECT



BIKE SHOP

6610 SEYBOLD ROAD
MADISON, WI

SHEET TITLE

PROPOSED
BUILDING
ELEVATIONS

NOTES

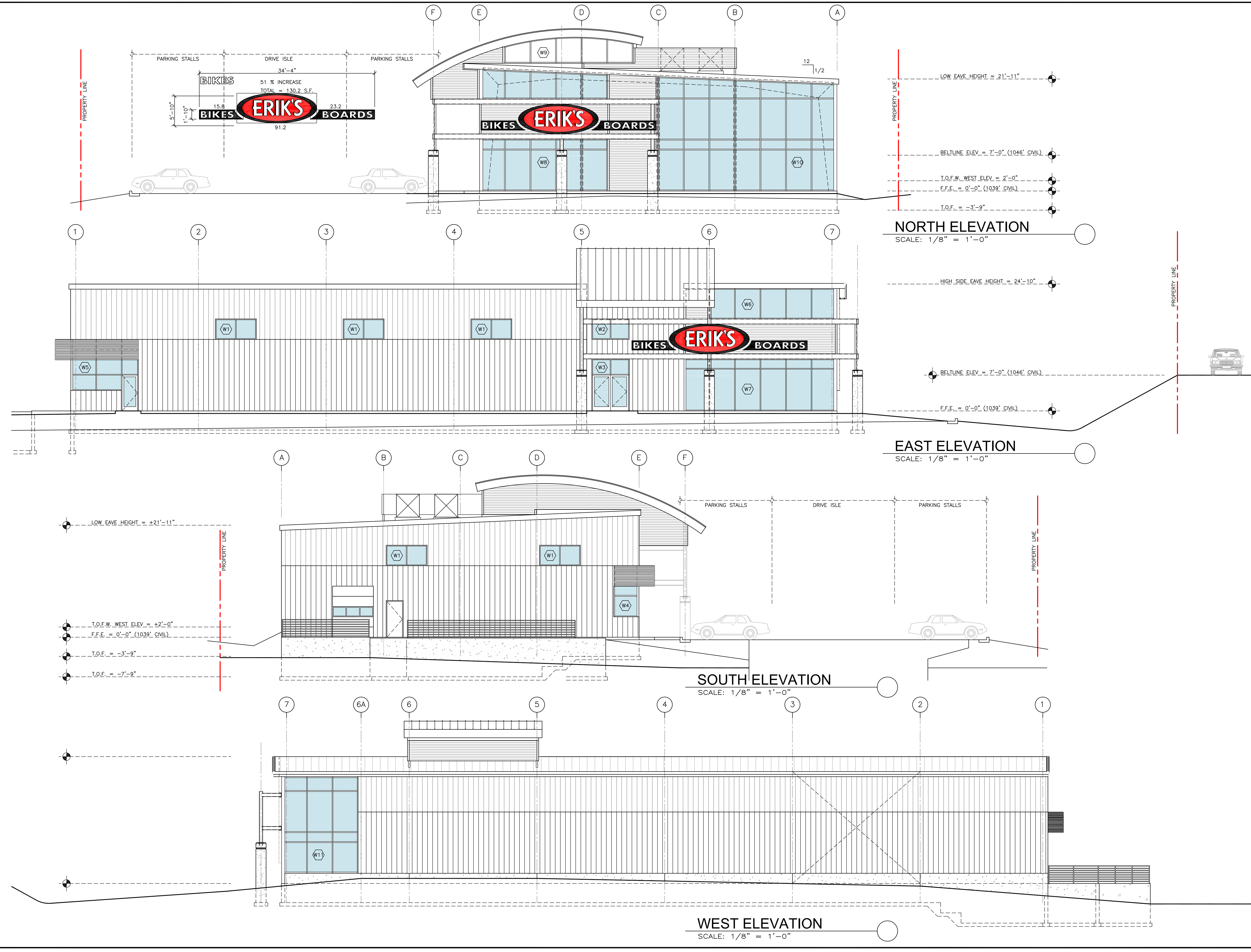
DATE: 09/6/11
PROJECT NO: 1110
DRAWN BY: FH
SCALE: SEE DRAWING

NOTE: THESE DRAWINGS ARE THE PROPERTY OF ZINGG DESIGN INC. AND CANNOT BE USED IN WHOLE OR PART WITHOUT THE EXPRESSED WRITTEN CONSENT BY ZINGG DESIGN.

SHEET NUMBER

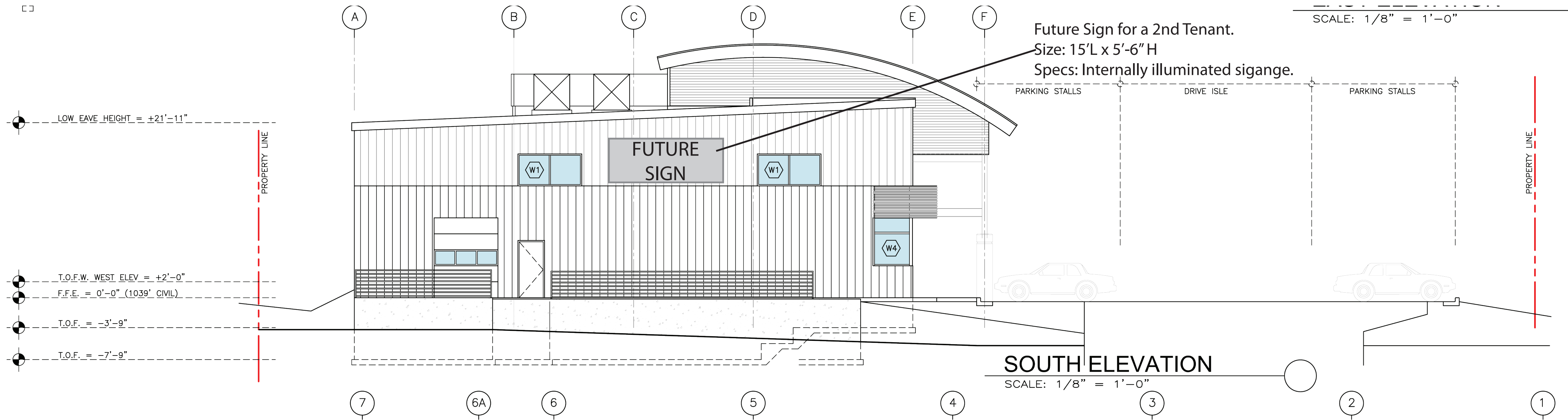
A2.0

ZINGG DESIGN, INC. © 2011



PRELIMINARY AND SUBJECT TO ALL JURISDICTIONAL REVIEW

SCALE: 1/8" = 1'-0"

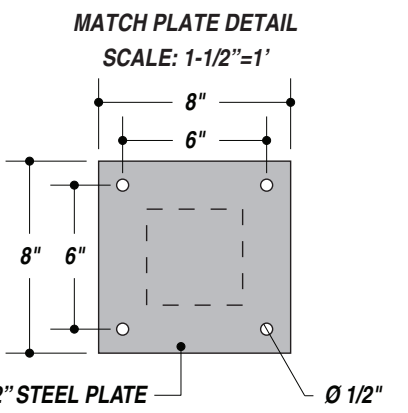
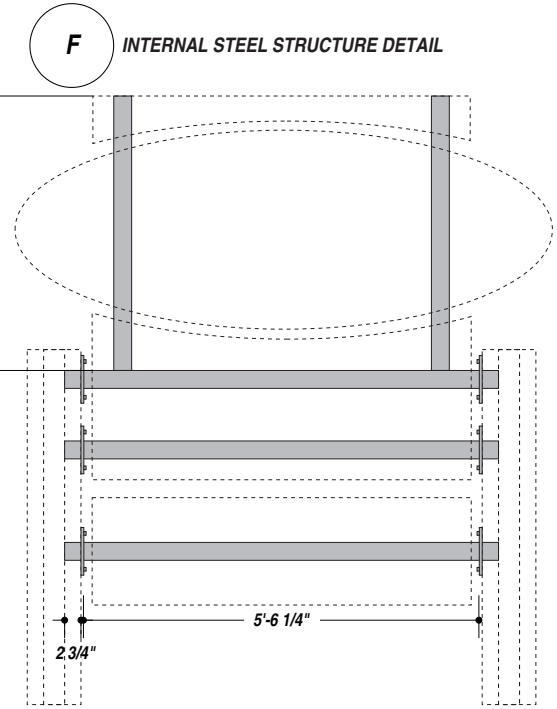
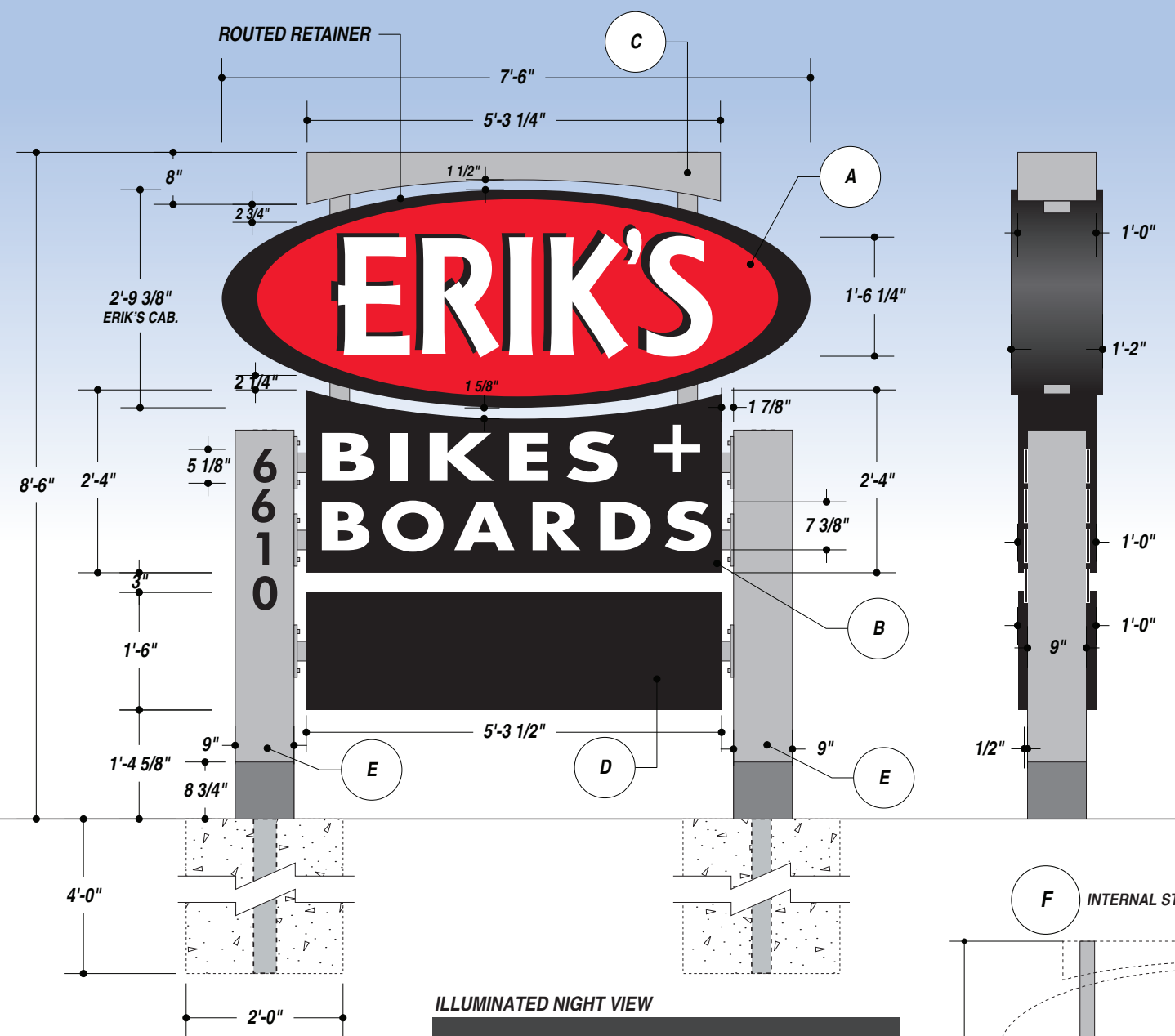


Future Sign for a 2nd Tenant.
Size: 15'L x 5'-6\" H
Specs: Internally illuminated sigange.

PARKING STALLS DRIVE ISLE PARKING STALLS

SOUTH ELEVATION

SCALE: 1/8" = 1'-0"



FOOTING DETAIL
 Centroid Height: 6.300 ft
 Sign Area: 48.000 sq ft
 Number of Support Columns: 2
 Steel type: new
 Wind Pressure: 30.000 lbs/ sq ft

Section Modulus: 1.814 per column
 Schedule 40 pipe (in inches,ROUND):
 3.500 each column
 OR 3.500 inch Steel SQUARE Tube:
 (0.188 inch wall),each column

Caisson type: Circular
 Base Diameter/Width: 2.000 ft
 Vert. Bearing Soil Pressure: 1500
 Lateral Bearing Soil Pressure: 150
 Est. Sign Weight: 500.000 lbs
 Est. Column Weight: 500.000 lbs/each

Footing Depth: 4.500 ft per column
 Valid Footing Diameter: 2.000 ft per column
 Concrete Yards: 0.514 yards per column
 x 2 = 1.027 yards total

MATCH PLATE DETAIL
 Centroid Height: 3.750 ft
 Sign Area: 68.000 sq ft
 Number of Support Columns: 2
 Steel type: new
 Wind Pressure: 30.000 lbs/ sq ft
 Section Modulus: 1.350 per column
 Schedule 40 pipe (in inches,ROUND):
 3.000 each column
 OR 3.000 inch Steel SQUARE Tube:
 (0.188 inch wall),each column

Accepted Bolt diameter(in.): 0.50
 Vertical Embedment Length to Bend: 10.95
 Minimum inside bend radius :2.00
 Bend(horizontal length) (in.): 2.00
 Length of thread: 1.88 Total Length:18.36
 Base plate minimum length: 8.00
 Base plate minimum thickness: 0.51
 Gusset Thickness (in.): 0.5
 Gusset Leg Length (in.): 1.13

JOB DESCRIPTION
 D/F ILLUMINATED EXTERIOR MONUMENT SIGN

A) FABRICATE CABINET FROM ALUMINUM TUBE AND SHEET W/ CUSTOM ROUTED RETAINERS (MINIMUM 2"). PAINT. FACE W/ WHITE ACRYLIC W/ APPLIED TRANSLUCENT VINYL. ILLUMINATE W/ LEDS.

B) FABRICATE CABINET FROM ALUMINUM TUBE AND SHEET W/ ROUTED ALUMINUM FACES BACKED W/ WHITE ACRYLIC. PAINT. FACES TO BE REMOVABLE FOR SERVICE. ILLUMINATE W/ LEDS.

C) FABRICATE TOP ARCHITECTUAL ELEMENT FROM ALUMINUM TUBE AND SHEET. PAINT.

D) FABRICATE CABINET FROM ALUMINUM TUBE AND SHEET W/ 2" RETIANERS. FACE W/ WHITE ACRYLIC W/ APPLIED VINYL GRAPHICS. ILLUMINATE W/ LEDS.

E) FABRICATE BASES FROM STEEL ANGLE AND ALUMINUM SHEET. MASK AND PAINT. ADDRESS TO BE 1/2" ROUTED PVC. PAINT. MOUNT FLUSH TO STREET SIDE OF SIGN ON BOTH SIDES.

F) INTERNAL 3" SQUARE STEEL SUPPORT STRUCTURE W/ MATCH PLATES.

INSTALL POLES INTO GROUND PER WINDLOAD DETAILS ON PRINT. INSTALL SIGN TO POLES USING MATCH PLATES DETAILED ON PRINT.



TOTAL SQ. FT. OF SIGNAGE: 39.5 sq. ft. VIEWING DISTANCE OF PRIMARY SIGN COPY : 368.75 ft.

UNLESS OTHERWISE SPECIFIED:
 • ALL FLUORESCENT LAMPS WILL BE T12-CW-HO LAMPS. • ALL BALLASTS WILL BE COLD START ALL-WEATHER BALLASTS. • ALL NEON TRANSFORMERS WILL BE 30 MILLIAMPS. • 120V PRIMARY POWER TO SIGNS WILL BE BY OTHERS. • ALL DATA LINES TO ELECTRONIC SIGNAGE WILL BE BY OTHERS. • ALL PAINT COLORS WILL BE SEMI-GLOSS FINISH.

THIS IS AN ORIGINAL COMPUTER GENERATED COLOR PRINT. COLORS REPRESENTED ON THIS PRINT MAY NOT MATCH THE PMS CHIP, VINYL OR PAINT COLORS EXACTLY. IT IS TO BE VIEWED AS A REPRESENTATION ONLY. ALL DESIGNS & SPECIFICATIONS ARE THE SOLE PROPERTY OF SIGN PRODUCTIONS, INC. THEY ARE ONLY FOR THE CUSTOMERS USE IN CONNECTION WITH A PROPOSED PROJECT. ARTWORK AND PRINTED MATERIAL ARE NOT TO BE USED BY ANYONE OUTSIDE OF YOUR ORGANIZATION, NOR IS IT TO BE REPRODUCED, COPIED OR EXHIBITED IN ANY FORM WITHOUT THE CONSENT OF SIGN PRODUCTIONS, INC.

© COPYRIGHT 2010 BY GRANT SIGNS. 5119 - Terminal Dr. McFarland, Wisconsin 53558 • 608-838-7794

R1: 09.13.11 • WTD • ADDED ADDITIONAL CABINET. UPDATED WINDLOADING DETAILS.

PAINT (TBD) [Grey Box]
 SILVER METALIC W/ SATIN FINISH (TBD) [Light Grey Box]
 3630-22 BLACK (VINYL & PAINT) [Black Box]
 3630-33 RED (VINYL) [Red Box]

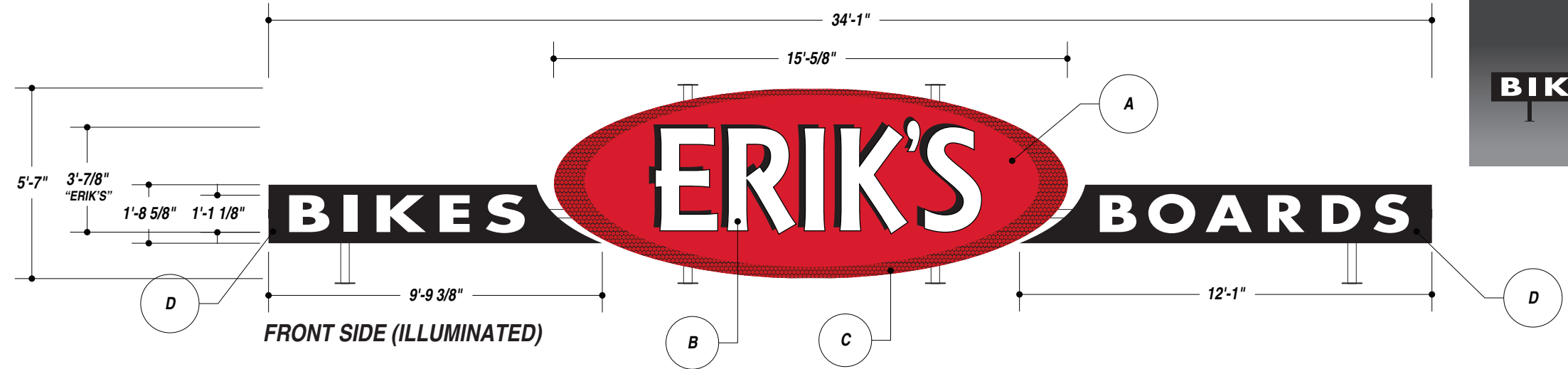
FILE NAME 27618-02-1 DATE 09.09.11 SCALE 1/2"=1'
 JOB NAME ERIK'S BIKE SHOP
 LOCATION 6610 SEYBOLD RD. MADISON, WI 53719
 DRAWN BY WTD SALESMAN DAN PIETRZYKOWSKI

DESIGN APPROVED BY:
 AUTHORIZED SIGNATURE _____
 DATE _____

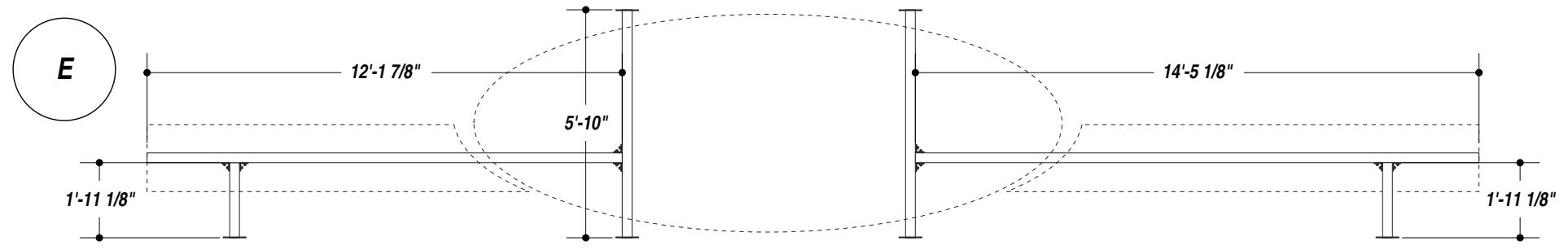


IF THIS PRINTS ONTO ARTWORK PAGE THE FILE HAS BEEN SIZED TO FIT PAPER AND WILL NOT BE TO SCALE - UNCHECK THE FIT TO PAGE BOX IN ACRABAT TO PRINT A SCALE PRINT

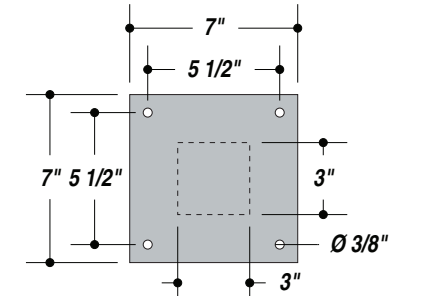
IF THIS PRINTS ONTO ARTWORK PAGE THE FILE HAS BEEN SIZED TO FIT PAPER AND WILL NOT BE TO SCALE - UNCHECK THE FIT TO PAGE BOX IN ACRABAT TO PRINT A SCALE PRINT



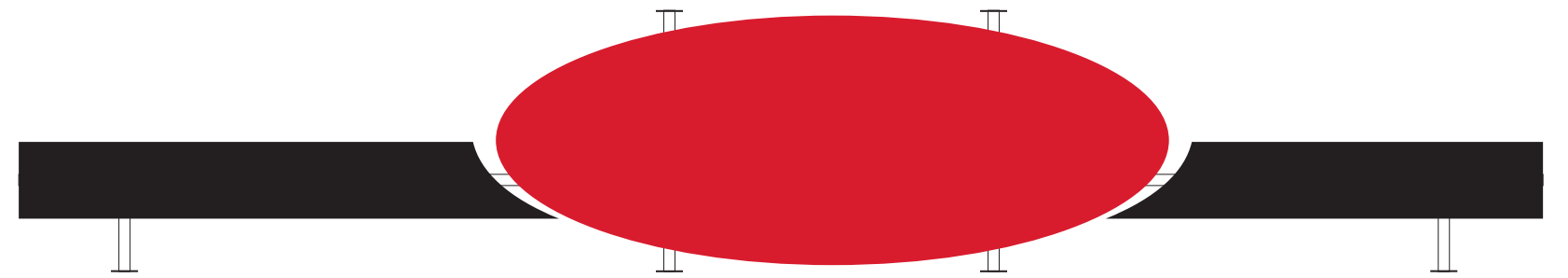
ILLUMINATED NIGHT VIEW



INTERNAL 3" ALUMINUM TUBE SUPPORT DETAIL



ALUMINUM MOUNTING PLATE DETAIL SCALE: 1-1/2"=1'



BACK SIDE (NON-ILLUMINATED)

- 7725-10 WHITE (VINYL & PAINT)
- 3630-22 BLACK (VINYL & PAINT)
- 3630-33 RED (VINYL)

TOTAL SQ. FT. OF SIGNAGE: 121.2 sq. ft. **VIEWING DISTANCE OF PRIMARY SIGN COPY : 656.25 ft.**

UNLESS OTHERWISE SPECIFIED:
 • ALL FLUORESCENT LAMPS WILL BE T12-CW-HO LAMPS. • ALL BALLASTS WILL BE COLD START ALL-WEATHER BALLASTS. • ALL NEON TRANSFORMERS WILL BE 30 MILLIAMPS. • 120V PRIMARY POWER TO SIGNS WILL BE BY OTHERS. • ALL DATA LINES TO ELECTRONIC SIGNAGE WILL BE BY OTHERS. • ALL PAINT COLORS WILL BE SEMI-GLOSS FINISH.

THIS IS AN ORIGINAL COMPUTER GENERATED COLOR PRINT. COLORS REPRESENTED ON THIS PRINT MAY NOT MATCH THE PMS CHIP, VINYL OR PAINT COLORS EXACTLY. IT IS TO BE VIEWED AS A REPRESENTATION ONLY. ALL DESIGNS & SPECIFICATIONS ARE THE SOLE PROPERTY OF SIGN PRODUCTIONS, INC. THEY ARE ONLY FOR THE CUSTOMERS USE IN CONNECTION WITH A PROPOSED PROJECT. ARTWORK AND PRINTED MATERIAL ARE NOT TO BE USED BY ANYONE OUTSIDE OF YOUR ORGANIZATION, NOR IS IT TO BE REPRODUCED, COPIED OR EXHIBITED IN ANY FORM WITHOUT THE CONSENT OF SIGN PRODUCTIONS, INC.

© COPYRIGHT 2010 BY GRANT SIGNS. 5119 - Terminal Dr. McFarland, Wisconsin 53558 608-838-7794

JOB DESCRIPTION

D/F ILLUMINATED EXTERIOR CHANNEL CABINETS W/ NON-ILLUMINATED BACK

A) FABRICATE CABINET FROM 2" ALUMINUM TUBE AND SHEET W/ CUSTOM ROUTED RETAINERS--2" MINIMUM--ROUTED TO SAME SHAPE AS PERF. ALUM ACCENT PIECE (C). PAINT RED. FACE FRONT SIDE W/ WHITE POLYCARBONATE W/ APPLIED VINYL (RED FACE AND BLACK DROP SHADOW). BACK SIDE TO BE PAINTED TO MATCH PRINT. CABINET TO HAVE REMOVABLE DOOR FOR SERVICE. ILLUMINATE W/ LEDs.

B) FABRICATE FACE-LIT CHANNEL LETTERS FROM
 -3" PAINTED BLACK RETURNS
 -BLACK TRIM CAP
 -FACE W/ WHITE ACRYLIC
 -ILLUMINATE W/ WHITE LEDs
 -REMOTE POWER SUPPLIES
 -MOUNT LETTERS TO CABINET (A) AS SHOWN.

C) FABRICATE BLACK ACCENT PIECE W/ 1/8" DIA. 3/16" STG. CTRS. 33 HOLES PSI (40% O/A) PERF. ALUMINUM. PAINT. MOUNT TO CABINET (A) W/ 2" STAND-OFFS.

D) FABRICATE CABINETS FROM 8" SPI CHANNEL. ROUTED ALUMINUM FACES BACKED W/ WHITE ACRYLIC. PAINT. ILLUMINATE W/ LEDs.

E) FABRICATE INTERNAL SUPPORT SYSTEM FROM 3" ALUMINUM TUBE. PAINT WHITE. CONNECT VERTICAL AND HORIZONTAL TUBES WITH ALUMINUM ANGLE AND BOLTS. ATTACH TO STEEL BEAMS ON BUILDING USING 1/4" ALUMINUM MOUNTING PLATES.

GRANT TO MAKE FINAL ELECTRICAL CONNECTION IF POWER LEAD IS PROVIDED.

FIELD SURVEY TO DETERMINE EXACT MEASUREMENTS.

FIELD SURVEY REQUIRED

R1: 09.13.11 • WTD • MAIN CABINET TO BE FABRICATE FROM 2" ALUM. TUBE AND SHEET. ADDED CHANNEL LETTERS. ADDED PERF. ALUMINUM ACCENT PIECE.
 R2: 09.21.11 • WTD • REMOVED VINYL FROM BACK SIDE OF SIGN.

FILE NAME 27618-01-2 DATE 08.29.11 SCALE 1/4"=1'
 JOB NAME ERIK'S BIKE SHOP
 LOCATION 6610 SEYBOLD RD. MADISON, WI 53719
 DRAWN BY WTD SALESMAN DAN PIETRZYKOWSKI

DESIGN APPROVED BY:
 AUTHORIZED SIGNATURE _____
 DATE _____