

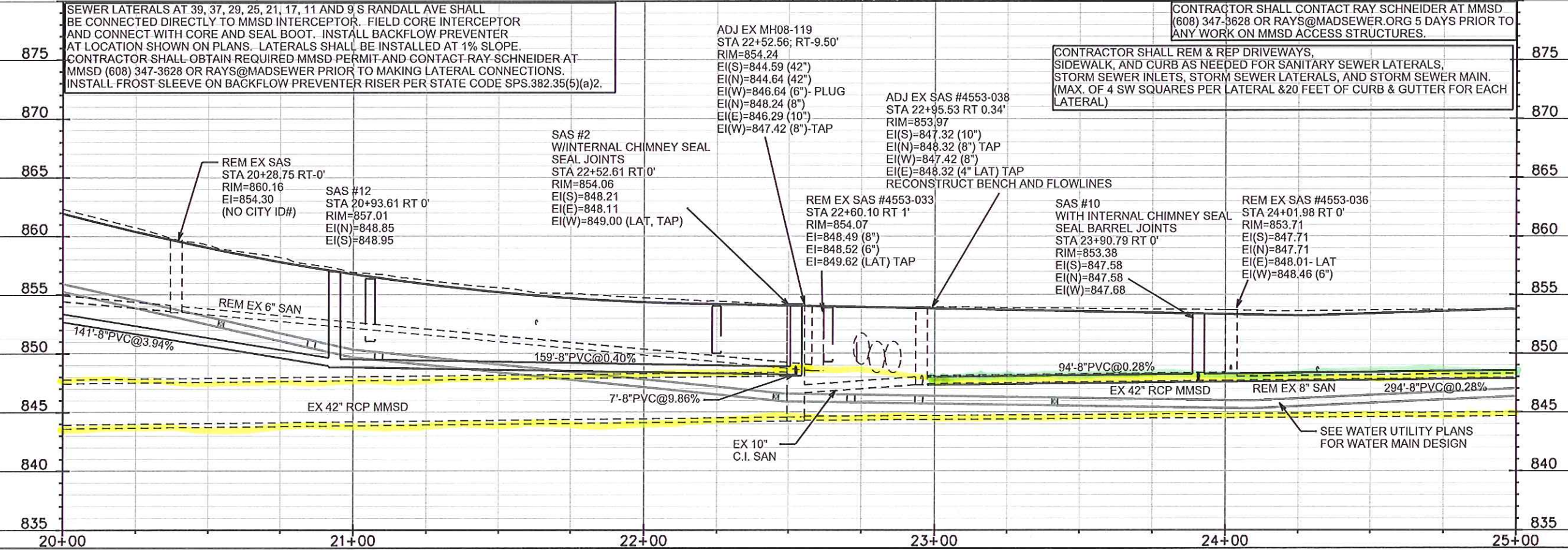
City San
 main
 MMSD
 Laterals

SEWER LATERAL BACKFLOW PREVENTER LOCATION. RECTOR CLEAN SEAL WITH HD SUPPLY MODEL #SC60 CAST IRON CLEANOUT COVER OR APPROVED EQUIVALENT.

SEWER LATERALS AT 39, 37, 29, 25, 21, 17, 11 AND 9 S RANDALL AVE SHALL BE CONNECTED DIRECTLY TO MMSD INTERCEPTOR. FIELD CORE INTERCEPTOR AND CONNECT WITH CORE AND SEAL BOOT. INSTALL BACKFLOW PREVENTER AT LOCATION SHOWN ON PLANS. LATERALS SHALL BE INSTALLED AT 1% SLOPE. CONTRACTOR SHALL OBTAIN REQUIRED MMSD PERMIT AND CONTACT RAY SCHNEIDER AT MMSD (608) 347-3628 OR RAYS@MADSEWER.ORG 5 DAYS PRIOR TO MAKING LATERAL CONNECTIONS. INSTALL FROST SLEEVE ON BACKFLOW PREVENTER RISER PER STATE CODE SPS.382.35(5)(a)2.

CONTRACTOR SHALL CONTACT RAY SCHNEIDER AT MMSD (608) 347-3628 OR RAYS@MADSEWER.ORG 5 DAYS PRIOR TO ANY WORK ON MMSD ACCESS STRUCTURES.

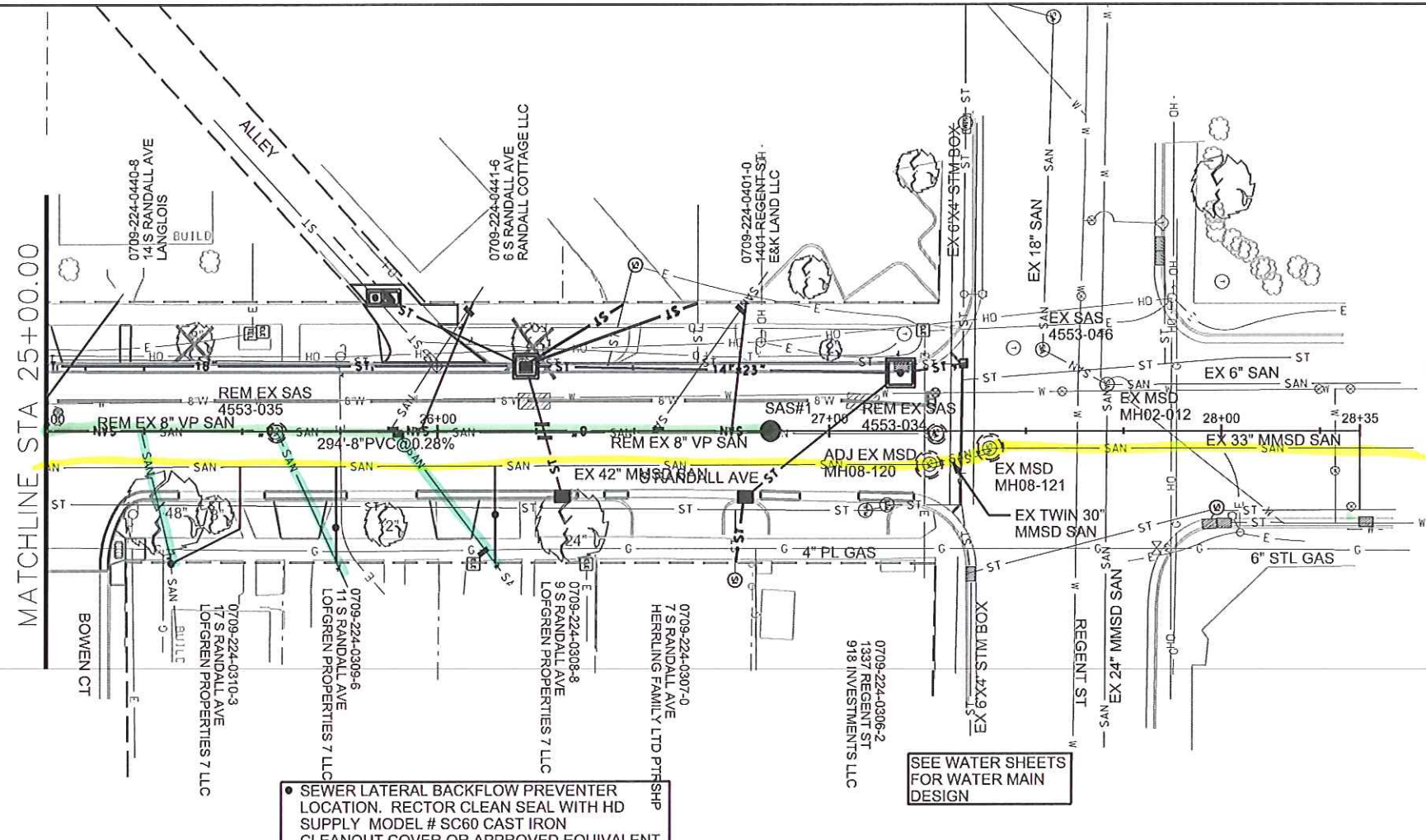
CONTRACTOR SHALL REM & REP DRIVEWAYS, SIDEWALK, AND CURB AS NEEDED FOR SANITARY SEWER LATERALS, STORM SEWER INLETS, STORM SEWER LATERALS, AND STORM SEWER MAIN. (MAX. OF 4 SW SQUARES PER LATERAL & 20 FEET OF CURB & GUTTER FOR EACH LATERAL)



PLOT SCALE: _____

REV. DATE: _____

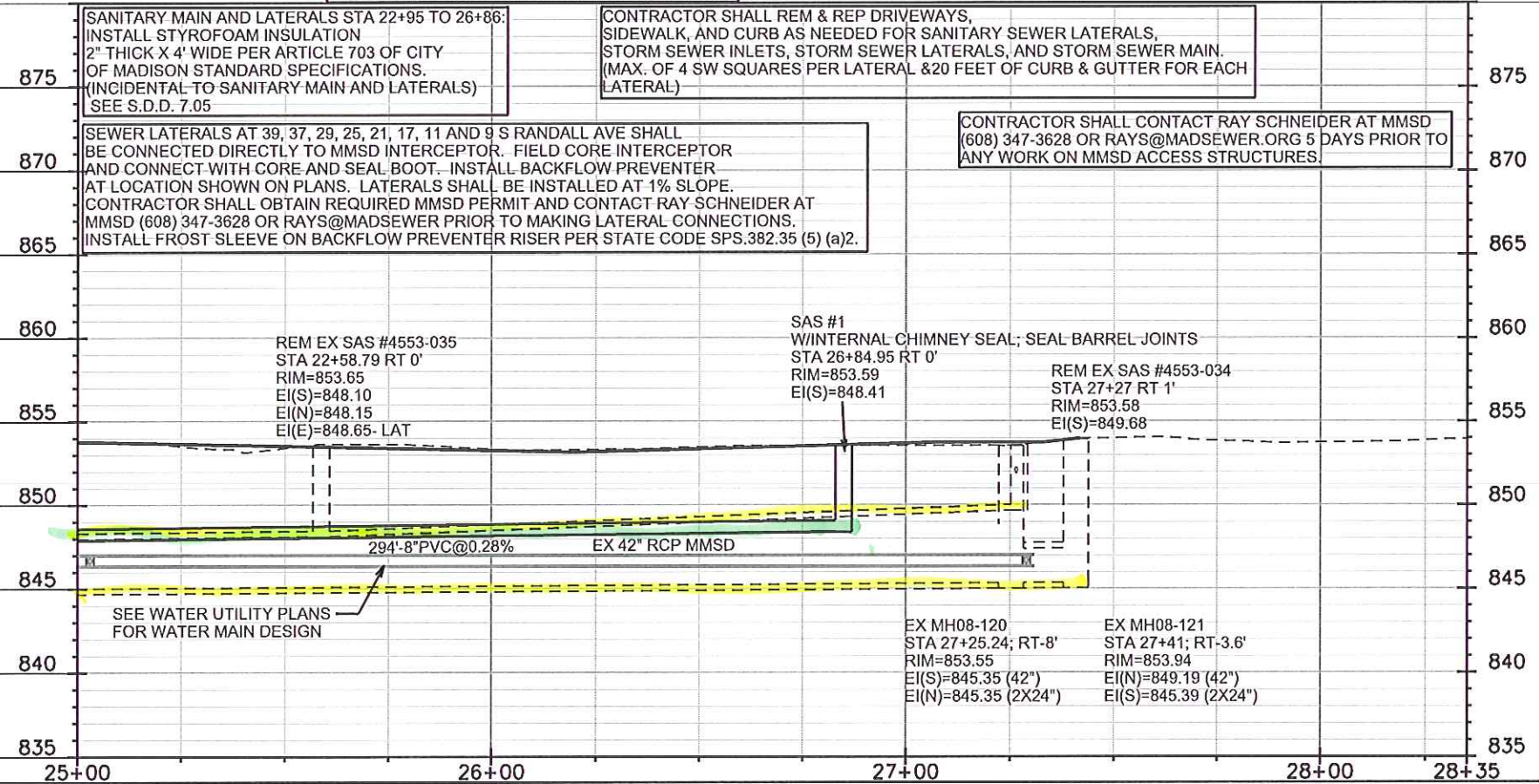
ORIGINATOR: CITY OF MADISON, STREETS DIVISION



City Sanitary
 MMSD Interceptor
 Laterals

SEWER LATERAL BACKFLOW PREVENTER LOCATION. RECTOR CLEAN SEAL WITH HD SUPPLY MODEL # SC60 CAST IRON CLEANOUT COVER OR APPROVED EQUIVALENT.

SEE WATER SHEETS FOR WATER MAIN DESIGN



SANITARY MAIN AND LATERALS STA 22+95 TO 26+86. INSTALL STYROFOAM INSULATION 2" THICK X 4' WIDE PER ARTICLE 703 OF CITY OF MADISON STANDARD SPECIFICATIONS. (INCIDENTAL TO SANITARY MAIN AND LATERALS) SEE S.D.D. 7.05

CONTRACTOR SHALL REM & REP DRIVEWAYS, SIDEWALK, AND CURB AS NEEDED FOR SANITARY SEWER LATERALS, STORM SEWER INLETS, STORM SEWER LATERALS, AND STORM SEWER MAIN. (MAX. OF 4 SW SQUARES PER LATERAL & 20 FEET OF CURB & GUTTER FOR EACH LATERAL)

CONTRACTOR SHALL CONTACT RAY SCHNEIDER AT MMSD (608) 347-3628 OR RAYS@MADSEWER.ORG 5 DAYS PRIOR TO ANY WORK ON MMSD ACCESS STRUCTURES.

SEWER LATERALS AT 39, 37, 29, 25, 21, 17, 11 AND 9 S RANDALL AVE SHALL BE CONNECTED DIRECTLY TO MMSD INTERCEPTOR. FIELD CORE INTERCEPTOR AND CONNECT WITH CORE AND SEAL BOOT. INSTALL BACKFLOW PREVENTER AT LOCATION SHOWN ON PLANS. LATERALS SHALL BE INSTALLED AT 1% SLOPE. CONTRACTOR SHALL OBTAIN REQUIRED MMSD PERMIT AND CONTACT RAY SCHNEIDER AT MMSD (608) 347-3628 OR RAYS@MADSEWER PRIOR TO MAKING LATERAL CONNECTIONS. INSTALL FROST SLEEVE ON BACKFLOW PREVENTER RISER PER STATE CODE SPS.382.35 (5) (a)2.

SEE WATER UTILITY PLANS FOR WATER MAIN DESIGN

PLOT SCALE: _____
 REV. DATE: _____
 ORIGINATOR: CITY OF MADISON, STREETS DIVISION