



CONTENTS LIST

GP001	Cover Sheet
GP002	Design Review Narrative
GP003	Design Review Narrative
GP004	Design Review Narrative
PSP001	Building Elevations
PSP002	Building Elevations
PSP003	Building Elevations
PSP004	Enlarged Building Elevations
PSP005	Enlarged Building Elevations
PSP006	Enlarged Building Elevations
PSP007	Enlarged Building Elevations
PSP008	Enlarged Building Elevations
PSP009	Enlarged Building Elevations
PSP010	Enlarged Building Elevations
PSP011	Signage Details
PSP012	Signage Details
PSP013	Enlarged Building Elevations
PSP014	Lighting Cut Sheets
PSP015	Lighting Cut Sheets
PSP016	Photometric Plans & Elevations
PSP017	Photometric Plans & Elevations
PSP018	Photometric Plans & Elevations
PSP019	Perspective View-1
PSP020	Perspective View-2
PSP021	Perspective View-3
PSP022	Perspective View-4
PSP023	Perspective View-5

ANTUNOVICH ASSOCIATES
 ARCHITECTURE PLANNING INTERIOR DESIGN
 224 WEST HURON STREET CHICAGO, ILLINOIS 60654
 312.266.1126 FAX: 312.266.7123

Title: Cover & Contents Page
 UDC Signage & Lighting Submission
 Package
 Project: HUB AT MADISON

GP001
 Scale: NOTED
 October 29, 2014

The Hub at State Street

Comprehensive Design Review Narrative

The signage and lighting plan for the Hub at State street works to combining residential and commercial signage in an urban context. Set within the vibrant streetscapes of State Street and Frances Street, this project strives to create integrated signage and architecture to activate and enhance the streetscape. This Comprehensive Design Review (CDR) application seeks approval for the following three signage variations and a design modification for signage band modifications to allow signage placements where the building design does not include canopies:

- 1.) Multiple projecting signs and wall signs per tenant
- 2.) Primary residential entrance signage size and separation from canopy
- 3.) Identification signage at fourth floor corner element

Multiple Projecting Signs and Wall Signs per Tenant

Projecting and wall signs for the project are designed to create symmetry and rhythm to the signage in response to the symmetry of the overall design segments. Through the design approach of creating smaller building "facades" the overall composition focuses on creating variation along the streetscape which breaks the building into multiple discrete building forms. These building forms are then further broken into carefully designed compositions which allow multiple entrances and signage to work in concert to create well designed sub facades.

The composition of the building forms and entrance placement will be reinforced through the placement of multiple signs that could be allocated to one tenant. This flexibility would be reviewed based upon signage submittals by the tenant and would be evaluated at time of approval for overall design composition.

Comprehensive Design Review Criteria. The UDC shall apply the following criteria upon review of an application for a Comprehensive Sign Plan:

1. The Sign Plan shall create visual harmony between the signs, building(s), and building site through unique and exceptional use of materials, design, color, any lighting, and other design elements; and shall result in signs of appropriate scale and character to the uses and building(s) on the zoning lot as well as adjacent buildings, structures and uses.

Projecting and wall signs for the project are an integral component of the overall building design. The requested locations are designed to create symmetry and rhythm to the signage in response to the symmetry of the overall design segments. Through the design approach of creating smaller building "facades" the overall composition focuses on creating variation along the streetscape which breaks the building into multiple discrete building forms. These building

forms are then further broken into carefully designed compositions which allow multiple entrances and signage to work in concert to create well designed sub facades.

The design of the signage seeks to combine the overall design elements including lighting and placement to integrate the signage into a unique and vibrant facade overall streetscape.

2. Each element of the Sign Plan shall be found to be necessary due to unique or unusual design aspects in the architecture or limitations in the building site or surrounding environment; except that when a request for an Additional Sign Code Approval under Sec. 31.043(3) is included in the Comprehensive Design Review, the sign(s) eligible for approval under Sec. 31.043(3) shall meet the applicable criteria of Sec. 31.043(3), except that sign approvals that come to Comprehensive Design Review from MXC and EC districts pursuant to 31.13(3) and (7) need not meet the criteria of this paragraph.

The projecting and wall signage placement has been integrated into the overall design of the building and develops the streetscape rhythm and symmetry of the building. The resulting overall composition is strengthened through the placement of multiple projecting banner style and wall signs offering visual accents along the streetscape. The allowance for multiple signs per tenant in keeping with the established rhythm for the design will create the overall design symmetry for the project.

3. The Sign Plan shall not violate any of the stated purposes described in Secs. 31.02(1) and 33.24(2).

The design and placement of the signage proposed for the project meets the criteria outlined in each section. The additional signage will enhance the visibility of the commercial tenants while creating an attractive streetscape and overall building design. Through the integration of the signage placement and the individual building segments this approach avoids clutter, strengthens the overall design approach of the building and streetscape, continues the project's commitment to high quality design, and creates an enhancement to the overall State Street area.

4. All signs must meet minimum construction requirements under Sec. 31.04(5).

The proposed signage will meet the construction requirements of this section, as it relates to section 31.07 Wall, Roof, and above Roof Signs, 31.071 Canopy Signs, and 31.09 Projecting Signs, with the exception requested for multiple projecting signs per tenant.

5. The Sign Plan shall not approve Advertising beyond the restrictions in Sec. 31.11 or Off-Premise Directional Signs beyond the restrictions in Sec. 31.115.

Advertising signage will not be allowed.

6. The Sign Plan shall not be approved if any element of the plan: a. presents a hazard to vehicular or pedestrian traffic on public or private property, b. obstructs views at points of ingress and egress of adjoining properties, c. obstructs or impedes the visibility of existing lawful signs on adjacent property, or d. negatively impacts the visual quality of public or private open space.

The proposed signage meets all criteria.

7. The Sign Plan may only encompass signs on private property of the zoning lot or building site in question, and shall not approve any signs in the right of way or on public property.

The proposed signage is within the previously approved canopy and signage privilege in streets permit and meets all applicable standards of the approved agreement.

Residential Entrance Canopy Signage

The signage located at the Frances Street residential entrance has been designed to enhance the visibility and strongly denote the lobby location. This sign is designed to hang from the upper canopy and is scaled in response to the two story lobby atrium. The vision glass for the lobby atrium is recessed from the signage placement 10'.

Comprehensive Design Review Criteria. The UDC shall apply the following criteria upon review of an application for a Comprehensive Sign Plan:

1. The Sign Plan shall create visual harmony between the signs, building(s), and building site through unique and exceptional use of materials, design, color, any lighting, and other design elements; and shall result in signs of appropriate scale and character to the uses and building(s) on the zoning lot as well as adjacent buildings, structures and uses.

The signage located at the Frances Street residential entrance has been designed to enhance the visibility and strongly denote the lobby location, in keeping with the overall building design and scale.

2. Each element of the Sign Plan shall be found to be necessary due to unique or unusual design aspects in the architecture or limitations in the building site or surrounding environment; except that when a request for an Additional Sign Code Approval under Sec. 31.043(3) is included in the Comprehensive Design Review, the sign(s) eligible for approval under Sec. 31.043(3) shall meet the applicable criteria of Sec. 31.043(3), except that sign approvals that come to Comprehensive Design Review from MXC and EC districts pursuant to 31.13(3) and (7) need not meet the criteria of this paragraph.

The sign is designed to respond to the overall building design and specifically to the scale and proportion of the two story volume of the lobby atrium and canopy.

3. The Sign Plan shall not violate any of the stated purposes described in Secs. 31.02(1) and 33.24(2).

The design and placement of the signage proposed for the project meets the criteria outlined in each section.

4. All signs must meet minimum construction requirements under Sec. 31.04(5).

The proposed signage will meet the construction requirements of this section, as it relates to section 31.07 (3) Below- Canopy Signage, with the exception requested for the size of the overall sign and allowance for 18" separation from the canopy, both of which set the signage into the proportions of the adjoining atrium.

5. The Sign Plan shall not approve Advertising beyond the restrictions in Sec. 31.11 or Off-Premise Directional Signs beyond the restrictions in Sec. 31.115.

The signage will be limited to the proposed design.

6. The Sign Plan shall not be approved if any element of the plan: a. presents a hazard to vehicular or pedestrian traffic on public or private property, b. obstructs views at points of ingress and egress of adjoining properties, c. obstructs or impedes the visibility of existing lawful signs on adjacent property, or d. negatively impacts the visual quality of public or private open space.

The proposed signage meets all criteria.

7. The Sign Plan may only encompass signs on private property of the zoning lot or building site in question, and shall not approve any signs in the right of way or on public property.

The proposed signage is within the previously approved canopy and signage privilege in streets permit and meets all applicable standards of the approved agreement.

Project Identification Signage

The project identification signage has been integrated into the overall design of the building for aesthetic and visibility purposes. Placement of this sign on the corner allows it to clearly identify the project without competing with the lower level commercial signage while keeping it low enough to retain a relationship with the adjoining streetscapes.

Comprehensive Design Review Criteria. The UDC shall apply the following criteria upon review of an application for a Comprehensive Sign Plan:

1. The Sign Plan shall create visual harmony between the signs, building(s), and building site through unique and exceptional use of materials, design, color, any lighting, and other design elements; and shall result in signs of appropriate scale and character to the uses and building(s) on the zoning lot as well as adjacent buildings, structures and uses.

The project identification signage has been integrated into the overall design of the building as an integral part of the design of the key State & Frances corner element.

2. Each element of the Sign Plan shall be found to be necessary due to unique or unusual design aspects in the architecture or limitations in the building site or surrounding environment; except that when a request for an Additional Sign Code Approval under Sec. 31.043(3) is included in the Comprehensive

5.00 - MADISON/CAD/KETCHER AND STUDIOS/SIGNAGE & LIGHTING/PROT EXTERIOR ELEVATIONS SIGNAGE PACKAGE/DWG

Design Review, the sign(s) eligible for approval under Sec. 31.043(3) shall meet the applicable criteria of Sec. 31.043(3), except that sign approvals that come to Comprehensive Design Review from MXC and EC districts pursuant to 31.13(3) and (7) need not meet the criteria of this paragraph.

The signage has been integrated into the corner element of the project, consistent with the previous submittals, creating a unique place making element of the project. Located at the fourth floor corner of the building this sign retains a relationship with the adjoining streetscapes and is an integral part of the design of the corner element.

3. The Sign Plan shall not violate any of the stated purposes described in Secs. 31.02(1) and 33.24(2).

The design and placement of the signage proposed for the project meets the criteria outlined in each section and creates a dynamic aesthetic for this prominent corner.

4. All signs must meet minimum construction requirements under Sec. 31.04(5).

The proposed signage will meet the construction requirements of this section and will be lit consistent with the proposed lighting plan.

5. The Sign Plan shall not approve Advertising beyond the restrictions in Sec. 31.11 or Off-Premise Directional Signs beyond the restrictions in Sec. 31.115.

The signage will be limited to the proposed design.

6. The Sign Plan shall not be approved if any element of the plan: a. presents a hazard to vehicular or pedestrian traffic on public or private property, b. obstructs views at points of ingress and egress of adjoining properties, c. obstructs or impedes the visibility of existing lawful signs on adjacent property, or d. negatively impacts the visual quality of public or private open space.

The proposed signage meets all criteria.

7. The Sign Plan may only encompass signs on private property of the zoning lot or building site in question, and shall not approve any signs in the right of way or on public property.

The proposed signage is located on private property.

No real estate signage will be allowed.

All other signage shall comply with the standards set forth in MGO Chapter 31.

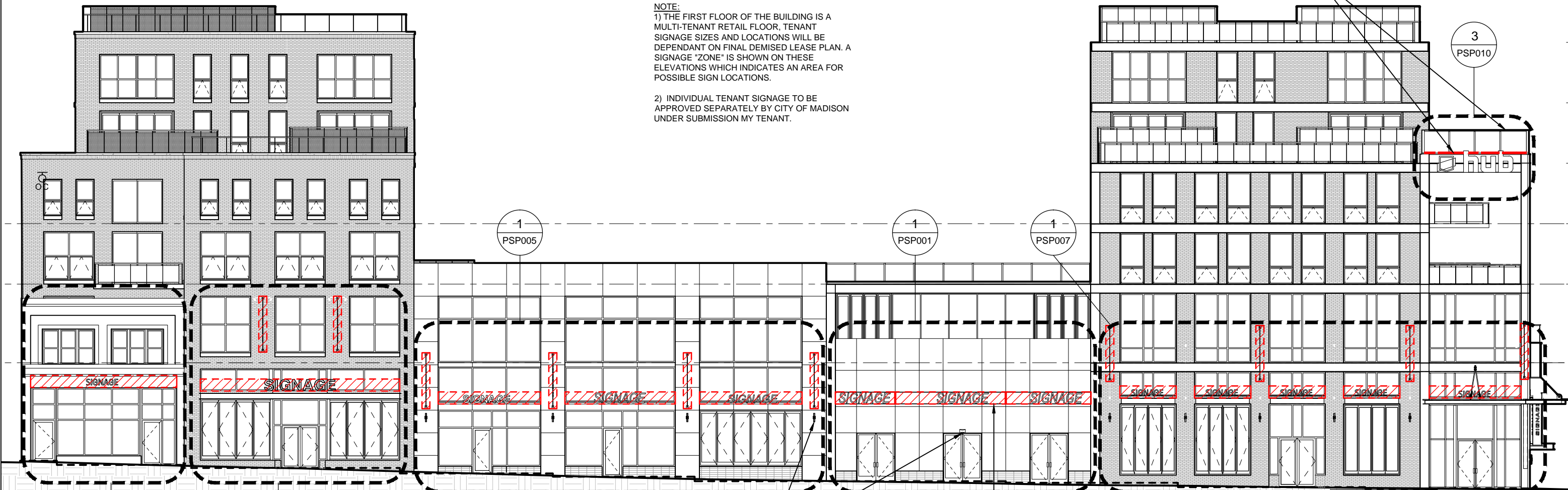
Signage Band Narrative

The design modification request is for the placement of a perforated metal band for sign placement in front of the all glass facades where canopy signage or wall mounting is not available. This sign band would create an area for sign placement while maintaining the overall aesthetic of the facade.

S:\CC - MADISON\KETCHES AND STUDIES\SIGNAGE & LIGHTING\RP001 EXTERIOR ELEVATIONS - SIGNAGE PACKAGE.DWG

INDIRECT RED LED LIGHTING TO GLASS BEACON

NOTE:
 1) THE FIRST FLOOR OF THE BUILDING IS A MULTI-TENANT RETAIL FLOOR, TENANT SIGNAGE SIZES AND LOCATIONS WILL BE DEPENDANT ON FINAL DEMISED LEASE PLAN. A SIGNAGE "ZONE" IS SHOWN ON THESE ELEVATIONS WHICH INDICATES AN AREA FOR POSSIBLE SIGN LOCATIONS.
 2) INDIVIDUAL TENANT SIGNAGE TO BE APPROVED SEPARATELY BY CITY OF MADISON UNDER SUBMISSION MY TENANT.



LIGHT FITTINGS

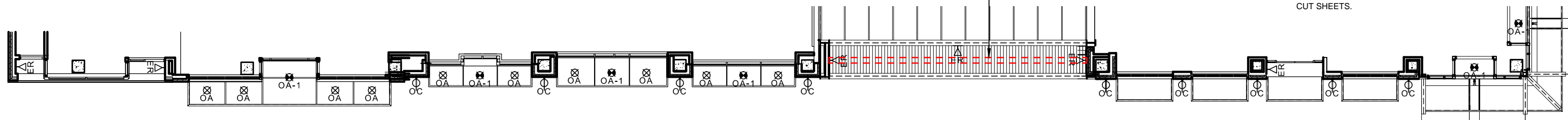
2' HIGH PERFORATED METAL SIGNAGE SUPPORT. STRUCTURAL SUPPORT BY ENGINEERS

LIGHT FITTING LEGEND

OC	"DALS" LED WALL SCONCES LIGHT TYPE.	OA	LITON RECESSED COMPACT FLORESCENT DOWN LIGHT.
ER	"DUAL LITE" LED WALL MOUNTED EMERGENCY LIGHTING.	OA-1	LITON RECESSED COMPACT FLORESCENT DOWN LIGHT, WITH EMERGENCY LIGHT CAPABILITIES.
OH	"LITEFORMS" SURFACE MOUNTED LED CYLINDER DOWN LIGHT.		
OH-1	"LITEFORMS" SURFACE MOUNTED LED CYLINDER DOWN LIGHT, WITH EMERGENCY LIGHT CAPABILITIES.		

LIGHTING CUT SHEETS - REFER TO SHEETS PSP014-PSP015 FOR LIGHTING CUT SHEETS.

2 STATE STREET ELEVATION
 - 001 SCALE: 1/16"=1'-0"



1 STATE STREET CANOPY RCP
 - 001 SCALE: 1/16"=1'-0"

ANTUNOVICH ASSOCIATES
 ARCHITECTURE PLANNING INTERIOR DESIGN
 224 WEST HURON STREET CHICAGO, ILLINOIS 60654
 312.266.1126 FAX: 312.266.7123

Title: Building Elevations
 UDC Signage & Lighting Submission
 Package
 Project: HUB AT MADISON

PSP001
 Scale: NOTED
 October 29, 2014

NOTE:
 1) THE FIRST FLOOR OF THE BUILDING IS A MULTI-TENANT RETAIL FLOOR, TENANT SIGNAGE SIZES AND LOCATIONS WILL BE DEPENDANT ON FINAL DEMISED LEASE PLAN. A SIGNAGE "ZONE" IS SHOWN ON THESE ELEVATIONS WHICH INDICATES AN AREA FOR POSSIBLE SIGN LOCATIONS.
 2) INDIVIDUAL TENANT SIGNAGE TO BE APPROVED SEPARATELY BY CITY OF MADISON UNDER SUBMISSION MY TENANT.

LIGHT FITTING LEGEND

	"DALS" LED WALL SCONCES LIGHT TYPE.
	"DUAL LITE" LED WALL MOUNTED EMERGENCY LIGHTING.
	"LITEFORMS" SURFACE MOUNTED LED CYLINDER DOWN LIGHT.
	"LITEFORMS" SURFACE MOUNTED LED CYLINDER DOWN LIGHT, WITH EMERGENCY LIGHT CAPABILITIES.
	LITON RECESSED COMPACT FLORESCENT DOWN LIGHT.
	LITON RECESSED COMPACT FLORESCENT DOWN LIGHT, WITH EMERGENCY LIGHT CAPABILITIES.

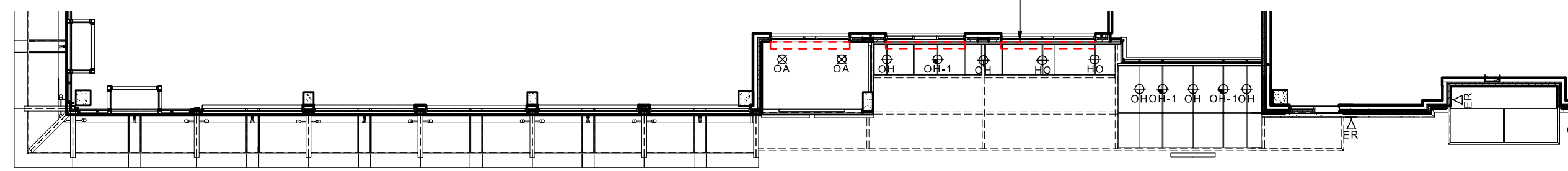
LIGHTING CUT SHEETS -
 REFER TO SHEETS PSP014-PSP015 FOR LIGHTING CUT SHEETS.



2 FRANCES STREET ELEVATION - 1
 - PSP002 SCALE: 1/16"=1'-0"

1 PSP008 1 PSP009 2 PSP009

2' HIGH PERFORATED METAL SIGNAGE SUPPORT. STRUCTURAL SUPPORT BY ENGINEERS



1 FRANCES STREET CANOPY RCP
 - PSP002 SCALE: 1/16"=1'-0"

ANTUNOVICH ASSOCIATES
 ARCHITECTURE PLANNING INTERIOR DESIGN
 224 WEST HURON STREET CHICAGO, ILLINOIS 60654
 312.266.1126 FAX: 312.266.7123

Title: Building Elevations
 UDC Signage & Lighting Submission
 Package
 Project: HUB AT MADISON

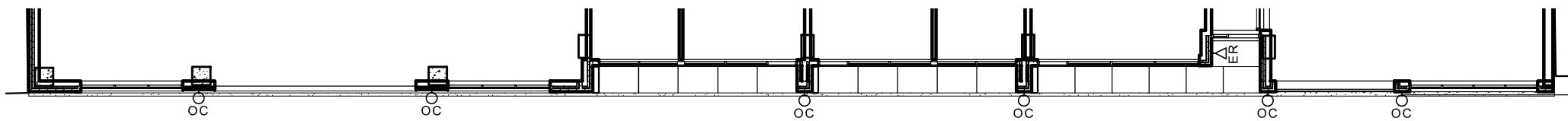
PSP002
 Scale: NOTED
 October 29, 2014

S.C.C. MADISON ARCHITECTS AND STUDIOS SIGNAGE & LIGHTING ARCHITECTURE EXTERIOR ELEVATIONS SIGNAGE PACKAGE DWG

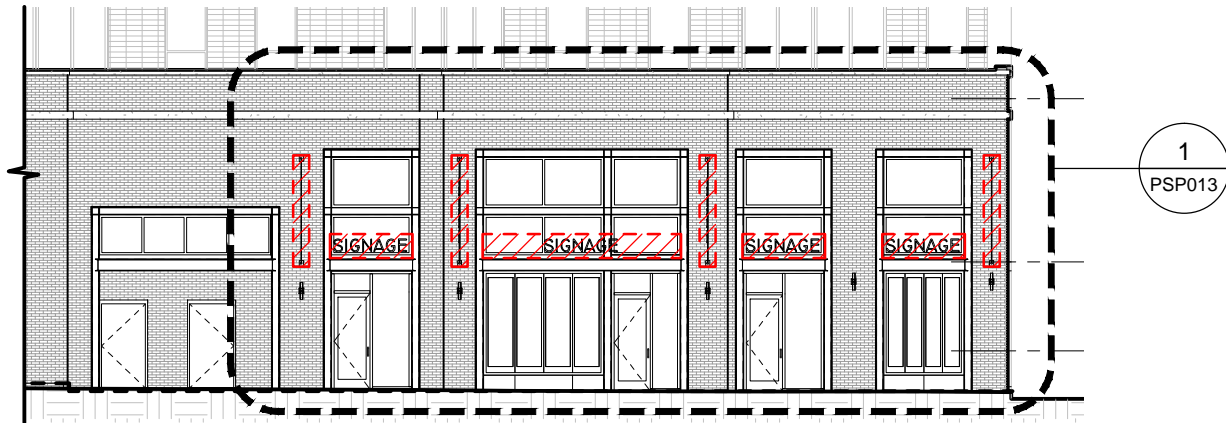
NOTE:
 1) THE FIRST FLOOR OF THE BUILDING IS A MULTI-TENANT RETAIL FLOOR, TENANT SIGNAGE SIZES AND LOCATIONS WILL BE DEPENDANT ON FINAL DEMISED LEASE PLAN. A SIGNAGE "ZONE" IS SHOWN ON THESE ELEVATIONS WHICH INDICATES AN AREA FOR POSSIBLE SIGN LOCATIONS.
 2) INDIVIDUAL TENANT SIGNAGE TO BE APPROVED SEPARATELY BY CITY OF MADISON UNDER SUBMISSION MY TENANT.



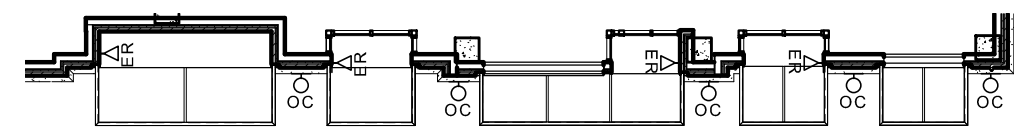
4 GILMAN STREET ELEVATION
 - PSP003 SCALE: 1/16"=1'-0"



3 GILMAN STREET CANOPY RCP
 - PSP003 SCALE: 1/16"=1'-0"



2 FRANCES STREET ELEVATION - 2
 - PSP003 SCALE: 1/16"=1'-0"



1 FRANCES STREET CANOPY RCP - 2
 - PSP003 SCALE: 1/16"=1'-0"

LIGHT FITTING LEGEND

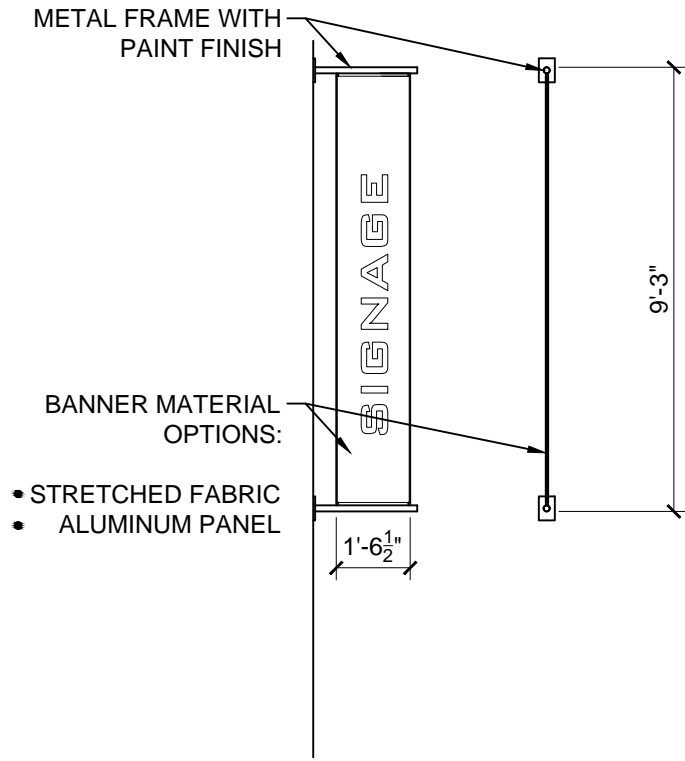
	"DALS" LED WALL SCONCES LIGHT TYPE.		LITON RECESSED COMPACT FLORESCENT DOWN LIGHT.
	"DUAL LITE" LED WALL MOUNTED EMERGENCY LIGHTING.		LITON RECESSED COMPACT FLORESCENT DOWN LIGHT, WITH EMERGENCY LIGHT CAPABILITIES.
	"LITEFORMS" SURFACE MOUNTED LED CYLINDER DOWN LIGHT.		
	"LITEFORMS" SURFACE MOUNTED LED CYLINDER DOWN LIGHT, WITH EMERGENCY LIGHT CAPABILITIES.		

LIGHTING CUT SHEETS -
 REFER TO SHEETS PSP014-PSP015 FOR LIGHTING CUT SHEETS.

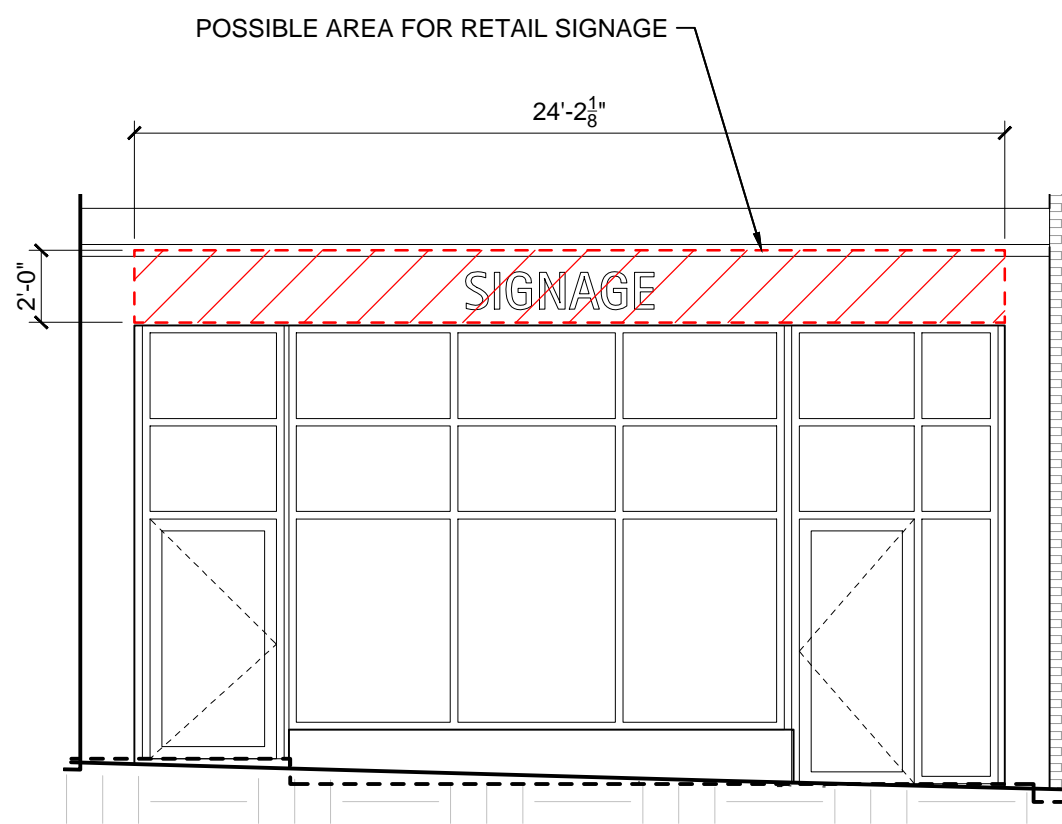
ANTUNOVICH ASSOCIATES ARCHITECTURE PLANNING INTERIOR DESIGN 224 WEST HURON STREET CHICAGO, ILLINOIS 60654 312.266.1126 FAX: 312.266.7123	Title: Building Elevations UDC Signage & Lighting Submission Package	PSP003 Scale: NOTED October 29, 2014
	Project: HUB AT MADISON	

S.D.C. - MADISON ARCHITECTS AND STUDIOS SIGNAGE & LIGHTING RCP01 EXTERIOR ELEVATIONS - SIGNAGE PACKAGE.DWG

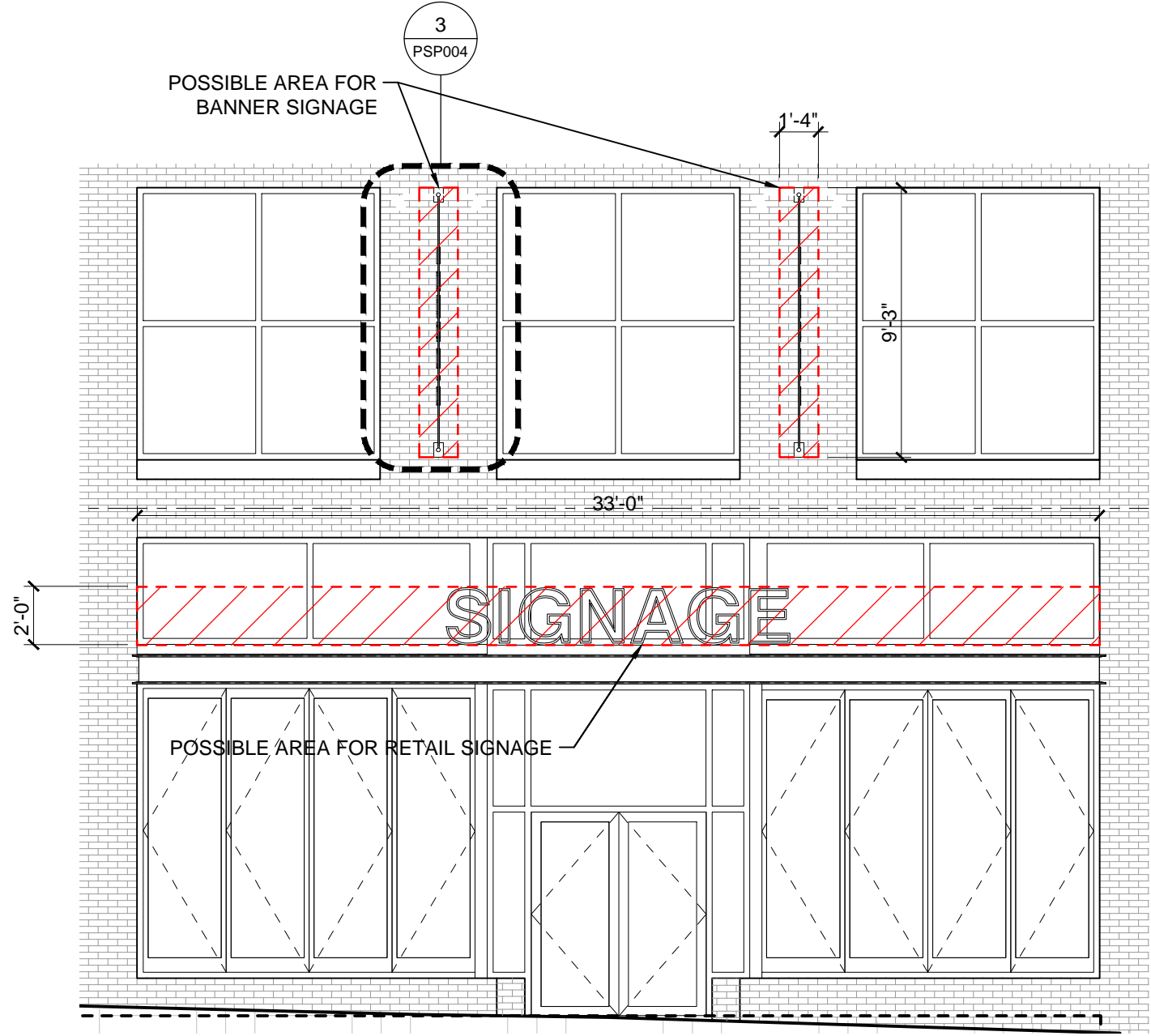
NOTE:
 1) THE FIRST FLOOR OF THE BUILDING IS A MULTI-TENANT RETAIL FLOOR, TENANT SIGNAGE SIZES AND LOCATIONS WILL BE DEPENDANT ON FINAL DEMISED LEASE PLAN. A SIGNAGE "ZONE" IS SHOWN ON THESE ELEVATIONS WHICH INDICATES AN AREA FOR POSSIBLE SIGN LOCATIONS.
 2) INDIVIDUAL TENANT SIGNAGE TO BE APPROVED SEPARATELY BY CITY OF MADISON UNDER SUBMISSION MY TENANT.



3 BANNER SIGNAGE DETAIL
 - PSP003 SCALE: 1/4"=1'-0"



1 STATE STREET - RETAIL SPACE
 PSP001 PSP004 SCALE: 3/16"=1'-0"

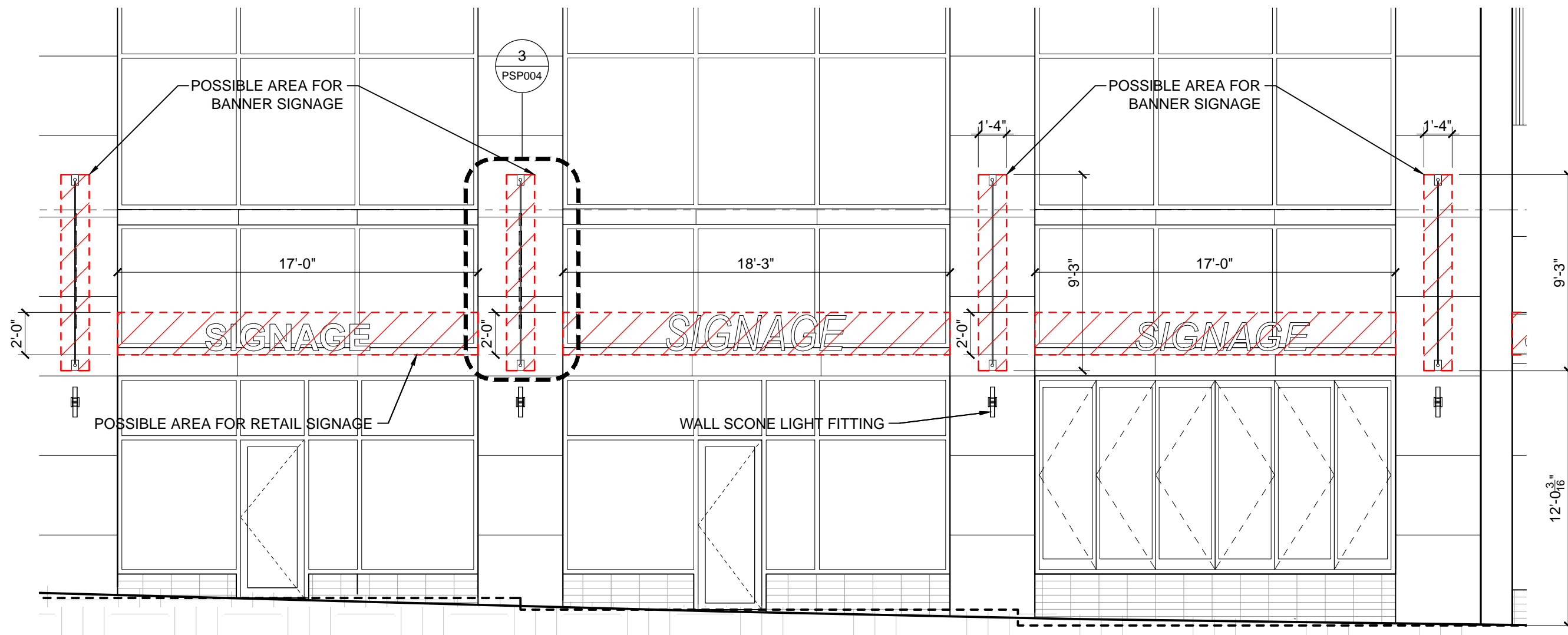


2 STATE STREET - RETAIL SPACE
 PSP001 PSP004 SCALE: 3/16"=1'-0"

ANTUNOVICH ASSOCIATES ARCHITECTURE PLANNING INTERIOR DESIGN 224 WEST HURON STREET CHICAGO, ILLINOIS 60654 312.266.1126 FAX: 312.266.7123	Title: Building Elevations UDC Signage & Lighting Submission Package	PSP004 Scale: NOTED October 29, 2014
	Project: HUB AT MADISON	

S.C.C. MADISON/CADSKETCHES AND STUDIES/SIGNAGE & LIGHTING/SIGNAGE & LIGHTING/0101 EXTERIOR ELEVATIONS SIGNAGE PACKAGE/DWG

NOTE:
 1) THE FIRST FLOOR OF THE BUILDING IS A MULTI-TENANT RETAIL FLOOR, TENANT SIGNAGE SIZES AND LOCATIONS WILL BE DEPENDANT ON FINAL DEMISED LEASE PLAN. A SIGNAGE "ZONE" IS SHOWN ON THESE ELEVATIONS WHICH INDICATES AN AREA FOR POSSIBLE SIGN LOCATIONS.
 2) INDIVIDUAL TENANT SIGNAGE TO BE APPROVED SEPARATELY BY CITY OF MADISON UNDER SUBMISSION BY TENANT.



1 STATE STREET - RETAIL SPACE

PSP001 | PSP005 SCALE: 3/16"=1'-0"

ANTUNOVICH ASSOCIATES ARCHITECTURE PLANNING INTERIOR DESIGN 224 WEST HURON STREET CHICAGO, ILLINOIS 60654 312.266.1126 FAX: 312.266.7123	Title: Building Elevations UDC Signage & Lighting Submission Package	PSP005 Scale: NOTED
	Project: HUB AT MADISON	October 29, 2014

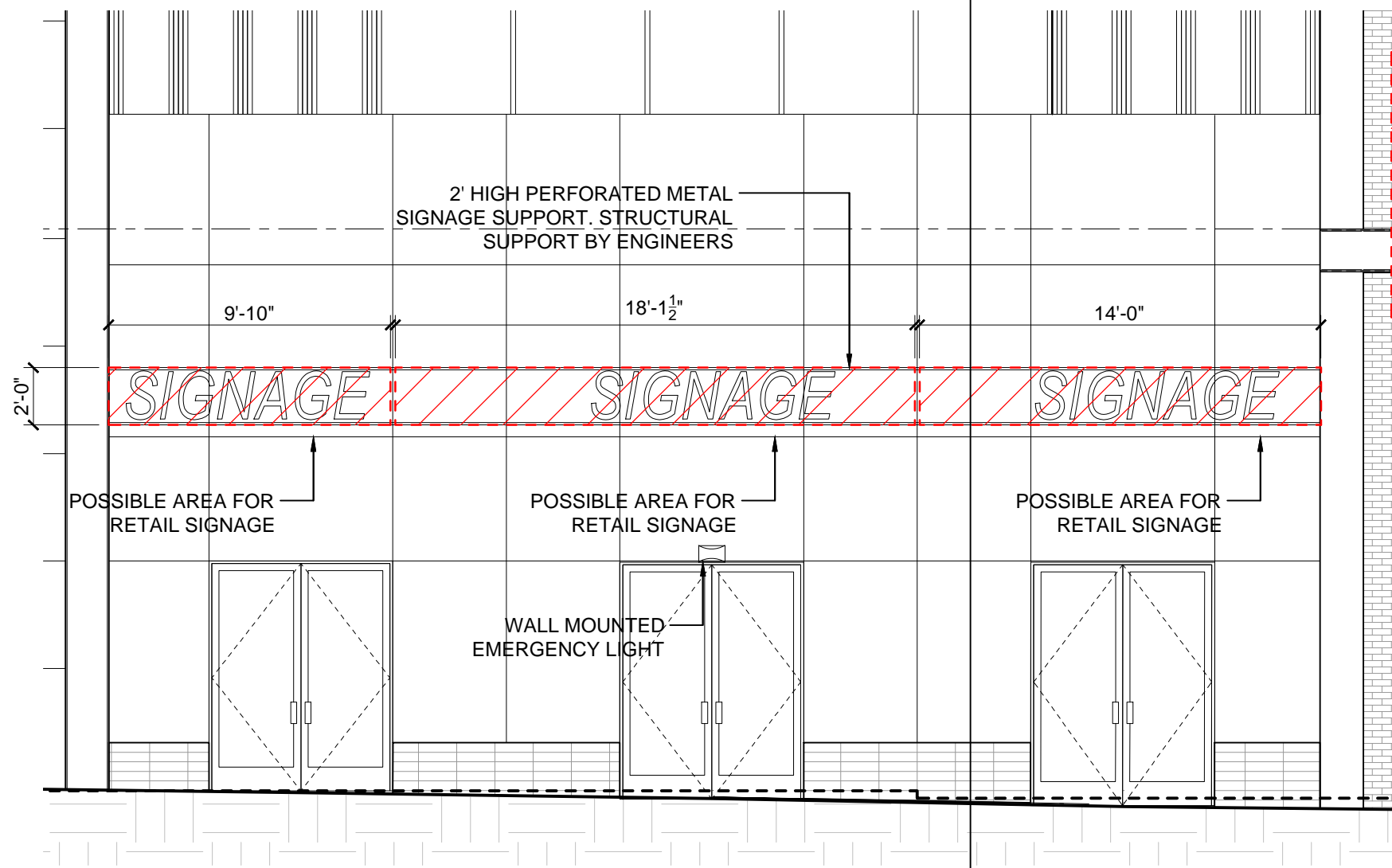
S:\CC - MADISON\04\KETCHES AND STUDIES\SIGNAGE & LIGHTING\SP001 EXTERIOR ELEVATIONS - SIGNAGE PACKAGE.DWG

NOTE:
 1) THE FIRST FLOOR OF THE BUILDING IS A MULTI-TENANT RETAIL FLOOR, TENANT SIGNAGE SIZES AND LOCATIONS WILL BE DEPENDANT ON FINAL DEMISED LEASE PLAN. A SIGNAGE "ZONE" IS SHOWN ON THESE ELEVATIONS WHICH INDICATES AN AREA FOR POSSIBLE SIGN LOCATIONS.
 2) INDIVIDUAL TENANT SIGNAGE TO BE APPROVED SEPARATELY BY CITY OF MADISON UNDER SUBMISSION BY TENANT.

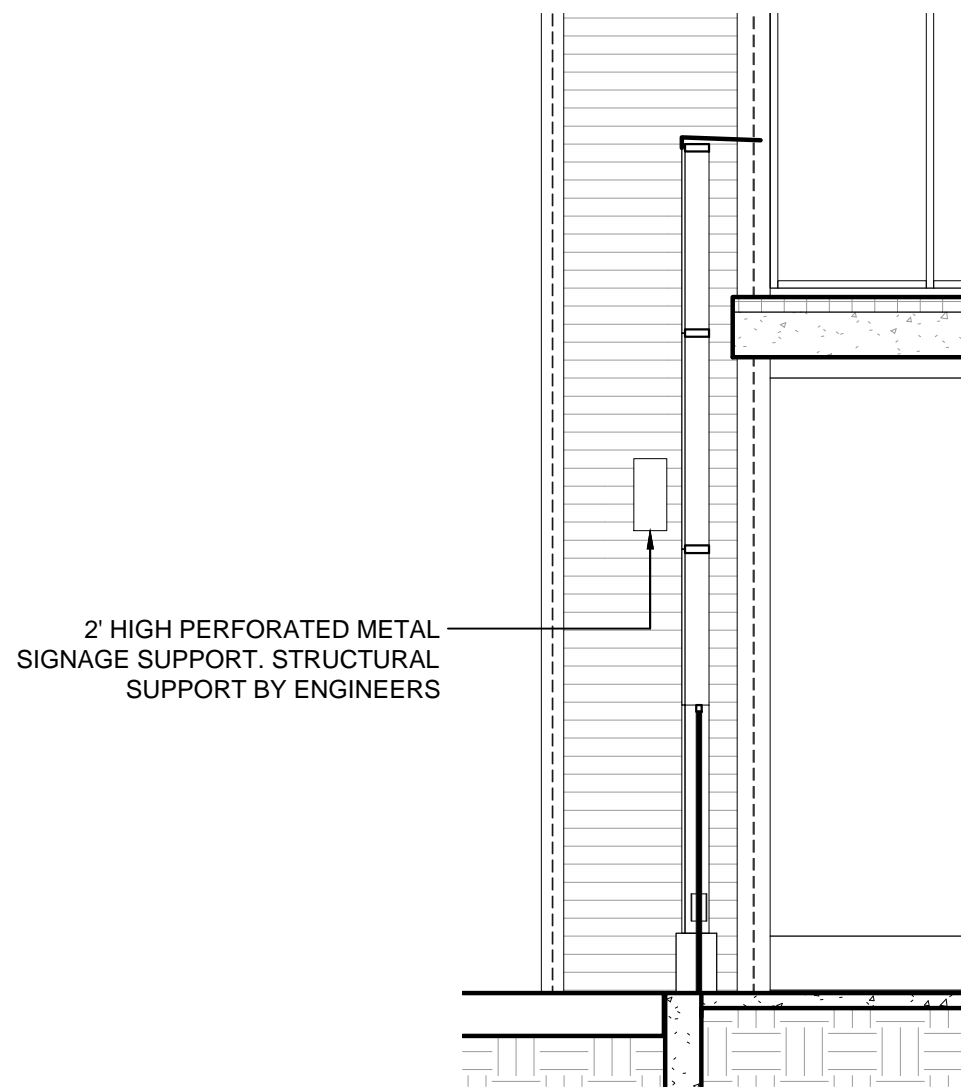


EXAMPLE OF PERFORATED METAL SIGNAGE SUPPORT.

2



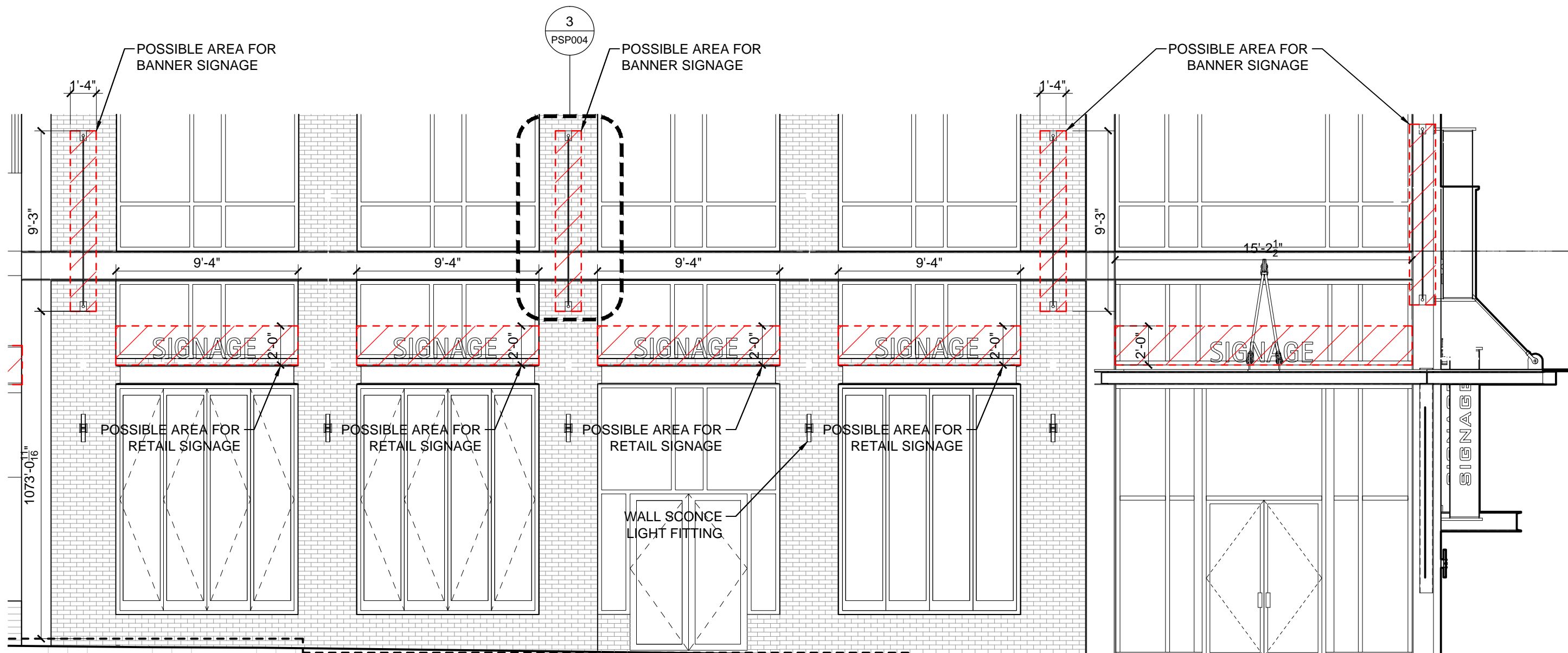
1 STATE STREET - RETAIL SPACE
 PSP001 | PSP006 SCALE: 3/16"=1'-0"



2 SECTION @ SIGNAGE
 - | PSP006 SCALE: 3/16"=1'-0"

S.C.C. - MADISON/CADSKETCHES AND STUDIES/SIGNAGE & LIGHTING/PSP001 EXTERIOR ELEVATIONS- SIGNAGE PACKAGE/DWG

NOTE:
 1) THE FIRST FLOOR OF THE BUILDING IS A MULTI-TENANT RETAIL FLOOR, TENANT SIGNAGE SIZES AND LOCATIONS WILL BE DEPENDANT ON FINAL DEMISED LEASE PLAN. A SIGNAGE "ZONE" IS SHOWN ON THESE ELEVATIONS WHICH INDICATES AN AREA FOR POSSIBLE SIGN LOCATIONS.
 2) INDIVIDUAL TENANT SIGNAGE TO BE APPROVED SEPARATELY BY CITY OF MADISON UNDER SUBMISSION MY TENANT.

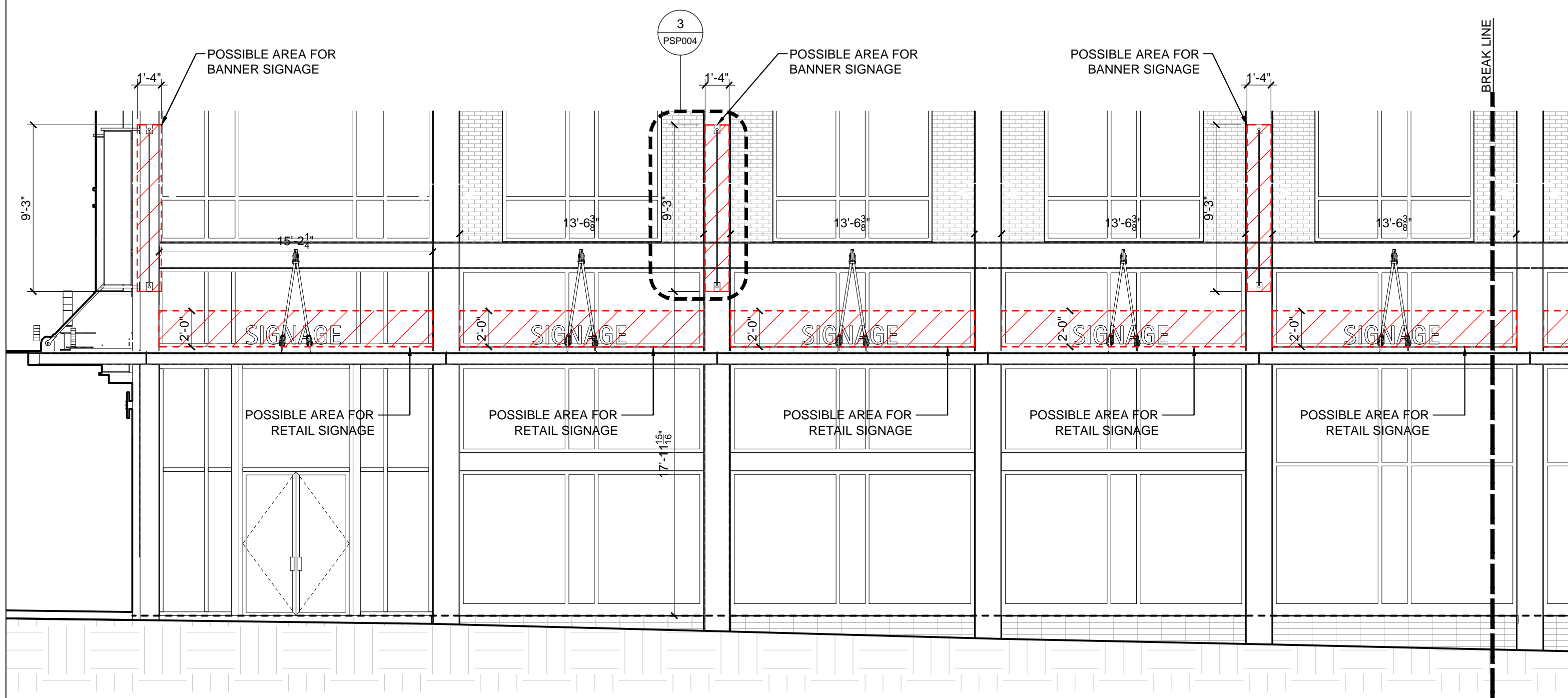


1 STATE STREET - RETAIL SPACE
 PSP001 PSP007 SCALE: 3/16"=1'-0"

ANTUNOVICH ASSOCIATES ARCHITECTURE PLANNING INTERIOR DESIGN 224 WEST HURON STREET CHICAGO, ILLINOIS 60654 312.266.1126 FAX: 312.266.7123	Title: Building Elevations UDC Signage & Lighting Submission Package	PSP007 Scale: NOTED
	Project: HUB AT MADISON	October 29, 2014

S.C.C. - MADISON ARCHITECTS AND STUDIOS SIGNAGE & LIGHTING PSP001 EXTERIOR ELEVATIONS SIGNAGE PACKAGE DWG

NOTE:
 1) THE FIRST FLOOR OF THE BUILDING IS A MULTI-TENANT RETAIL FLOOR. TENANT SIGNAGE SIZES AND LOCATIONS WILL BE DEPENDANT ON FINAL DEMISED LEASE PLAN. A SIGNAGE "ZONE" IS SHOWN ON THESE ELEVATIONS WHICH INDICATES AN AREA FOR POSSIBLE SIGN LOCATIONS.
 2) INDIVIDUAL TENANT SIGNAGE TO BE APPROVED SEPARATELY BY CITY OF MADISON UNDER SUBMISSION BY TENANT.

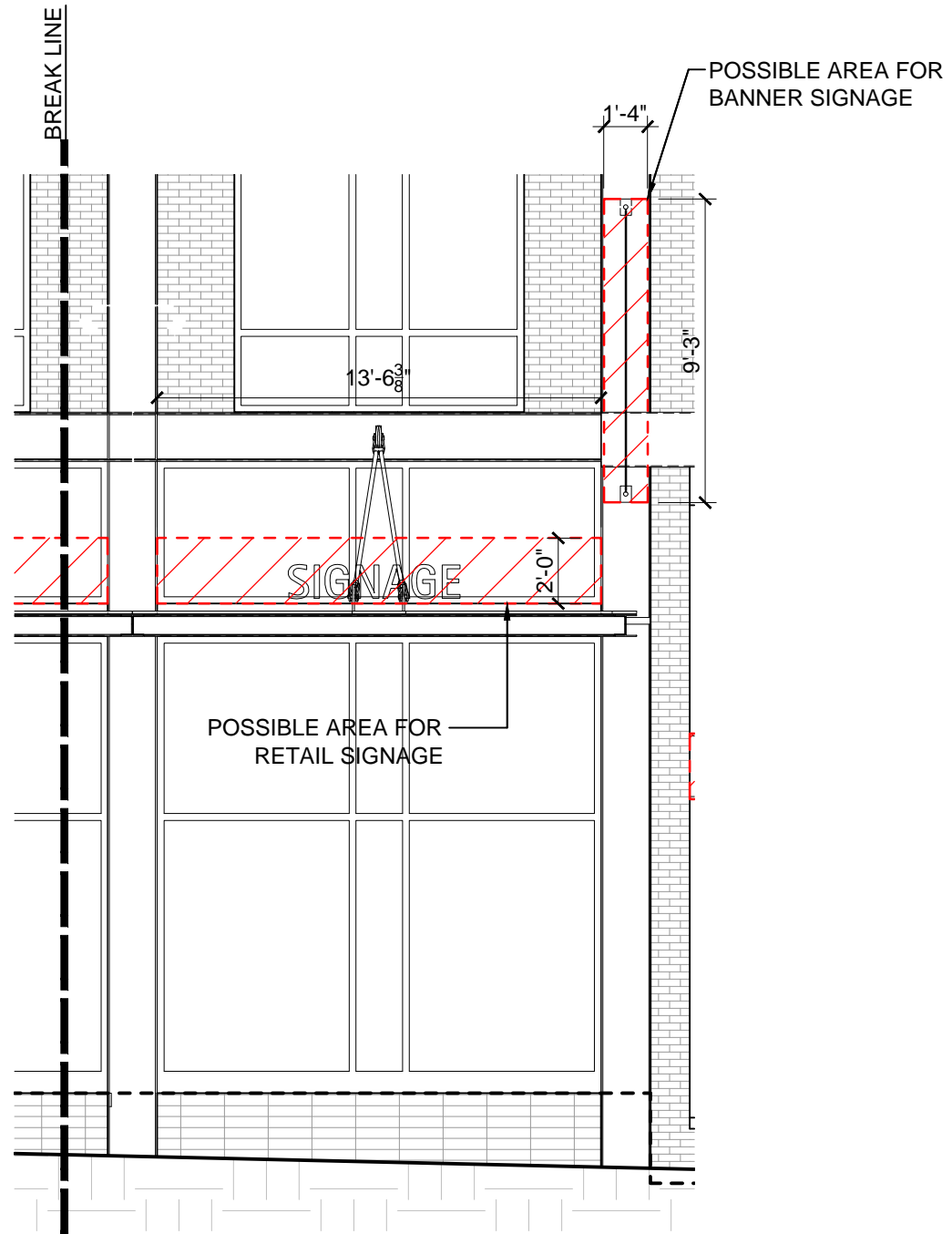


1 FRANCES STREET - RETAIL SPACE
 PSP002 PSP008 SCALE: 3/16"=1'-0"

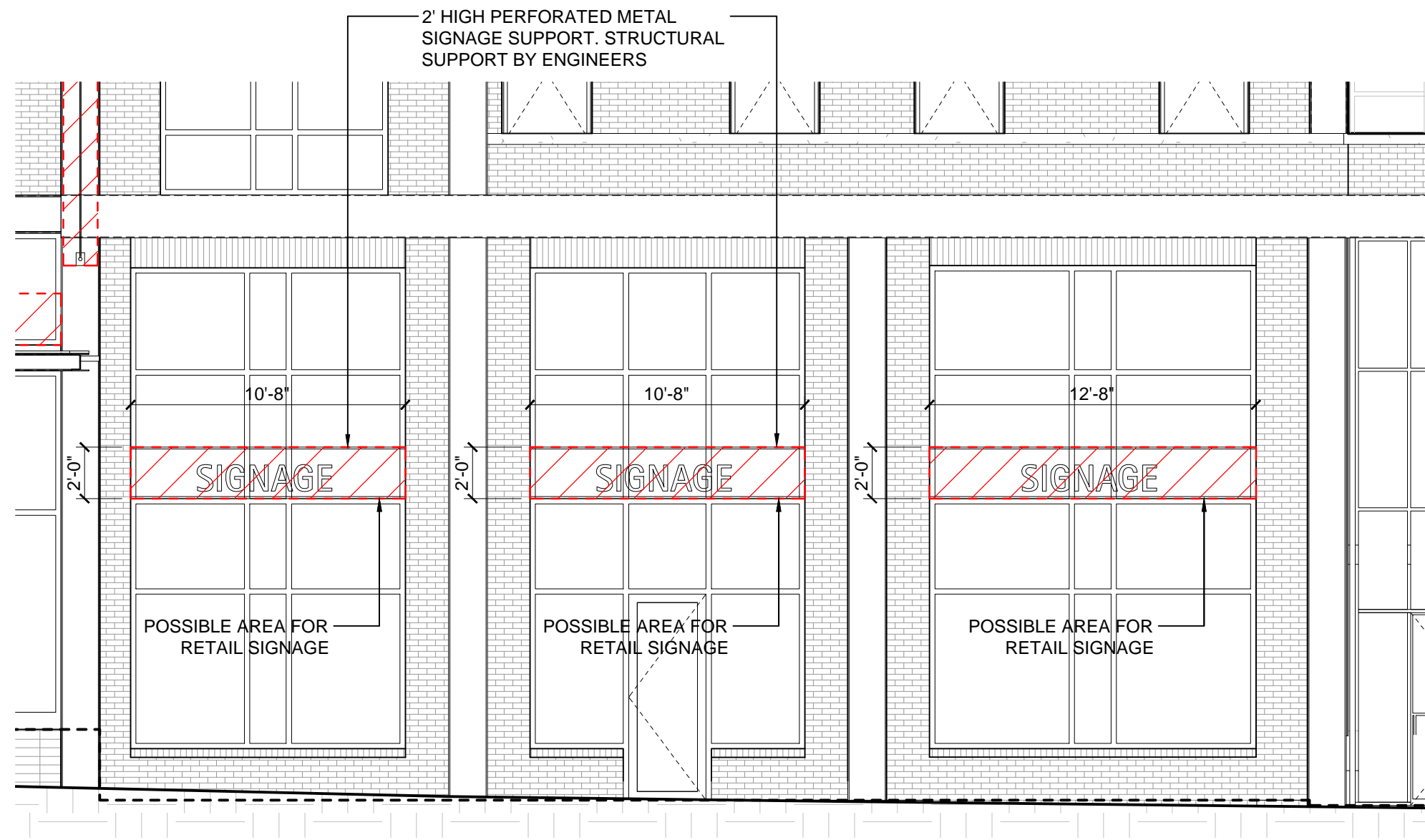
ANTUNOVICH ASSOCIATES ARCHITECTURE PLANNING INTERIOR DESIGN 224 WEST HURON STREET CHICAGO, ILLINOIS 60654 312.266.1126 FAX: 312.266.7123	Title: Building Elevations UDC Signage & Lighting Submission Package	PSP008 Scale: NOTED
	Project: HUB AT MADISON	October 29, 2014

S.C.C. - MADISON CAD SKETCHES AND STUDIES SIGNAGE & LIGHTING ARCHITECTURE EXTERIOR ELEVATIONS SIGNAGE PACKAGE DWG

NOTE:
 1) THE FIRST FLOOR OF THE BUILDING IS A MULTI-TENANT RETAIL FLOOR, TENANT SIGNAGE SIZES AND LOCATIONS WILL BE DEPENDANT ON FINAL DEMISED LEASE PLAN. A SIGNAGE "ZONE" IS SHOWN ON THESE ELEVATIONS WHICH INDICATES AN AREA FOR POSSIBLE SIGN LOCATIONS.
 2) INDIVIDUAL TENANT SIGNAGE TO BE APPROVED SEPARATELY BY CITY OF MADISON UNDER SUBMISSION MY TENANT.



1 FRANCES STREET - RETAIL SPACE
 PSP002/PSP009 SCALE: 3/16"=1'-0"



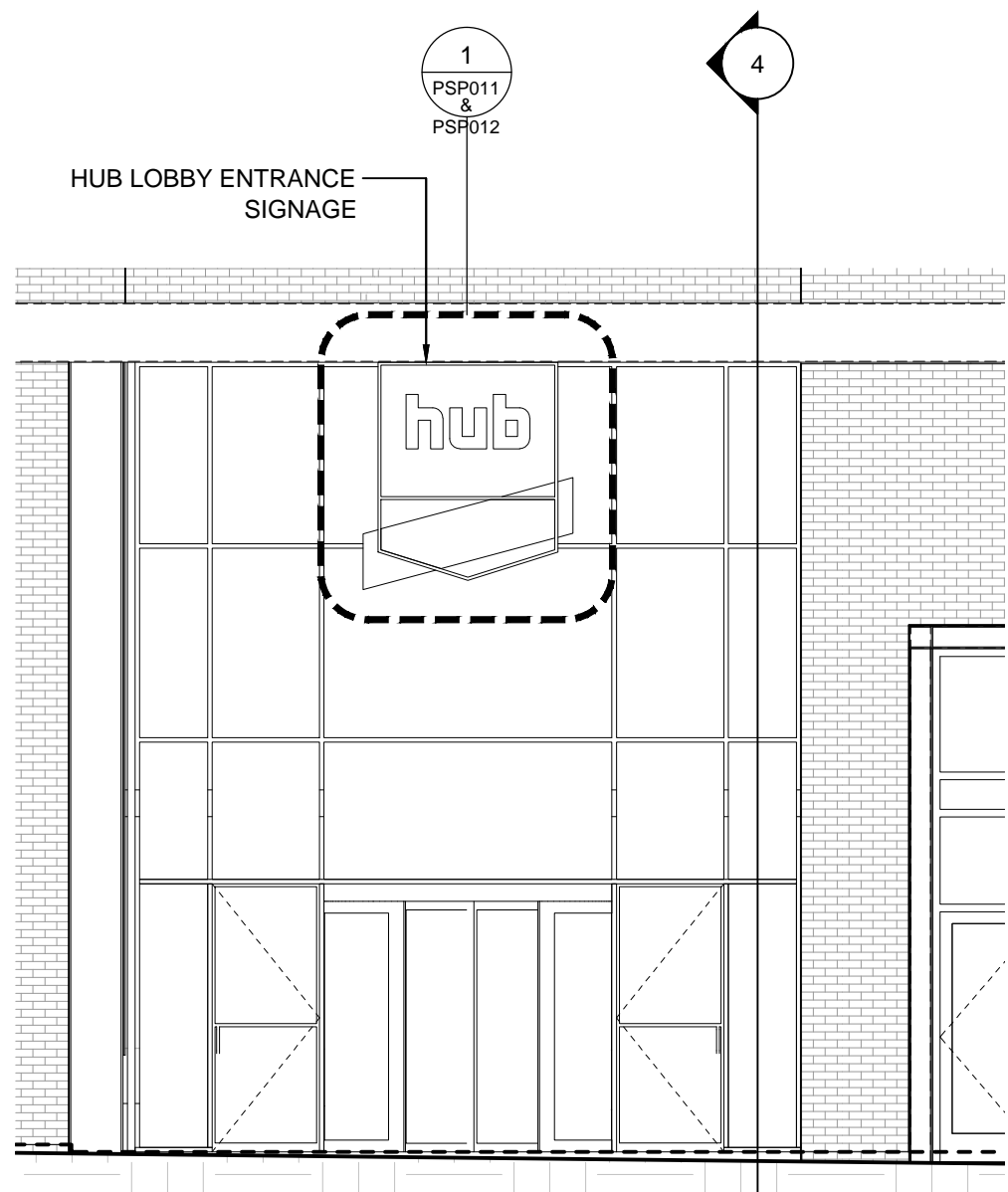
2 FRANCES STREET - RETAIL SPACE
 PSP002/PSP009 SCALE: 3/16"=1'-0"

ANTUNOVICH ASSOCIATES ARCHITECTURE PLANNING INTERIOR DESIGN 224 WEST HURON STREET CHICAGO, ILLINOIS 60654 312.266.1126 FAX: 312.266.7123	Title: Building Elevations UDC Signage & Lighting Submission Package	PSP009 Scale: NOTED October 29, 2014
	Project: HUB AT MADISON	

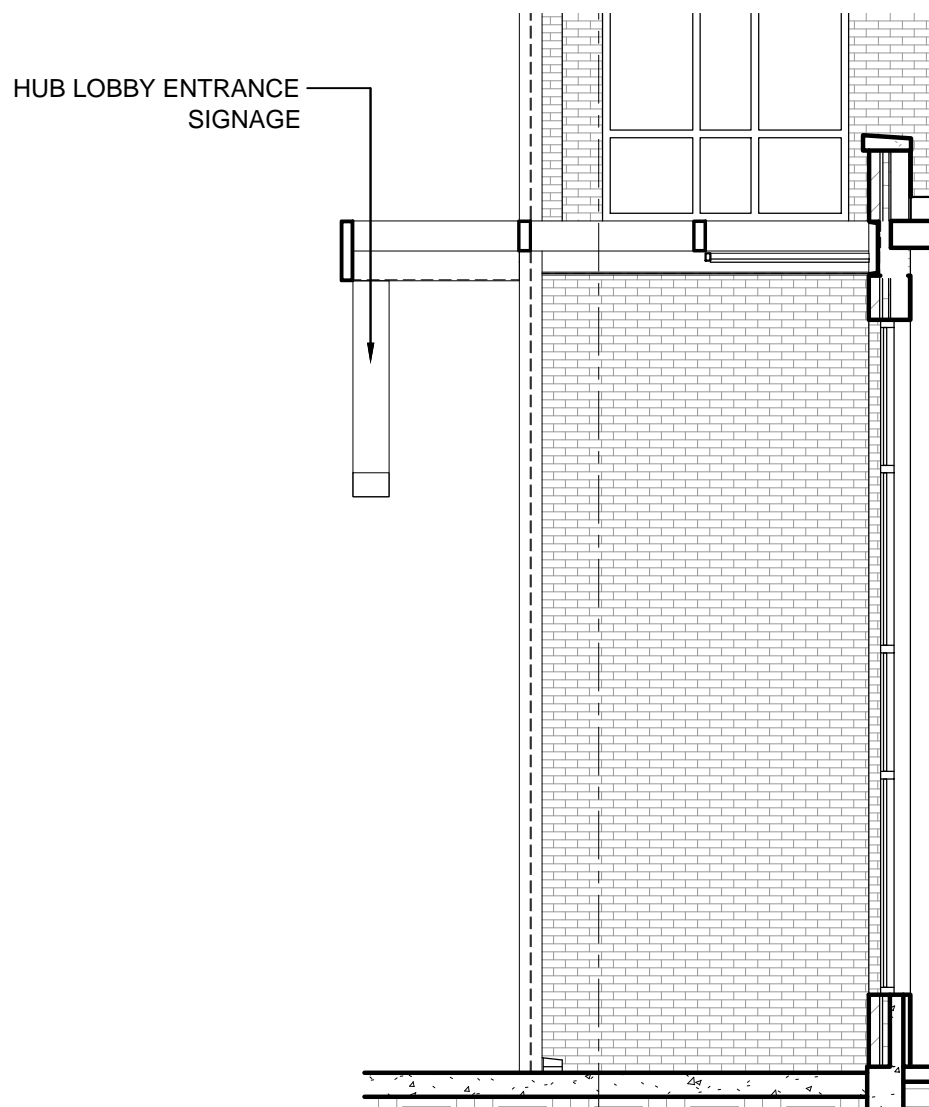
S.C.C. - MADISON/CADSKETCHES AND STUDIES/SIGNAGE & LIGHTING/SP001 EXTERIOR ELEVATIONS - SIGNAGE PACKAGE/DWG

NOTE:
 1) THE FIRST FLOOR OF THE BUILDING IS A MULTI-TENANT RETAIL FLOOR, TENANT SIGNAGE SIZES AND LOCATIONS WILL BE DEPENDANT ON FINAL DEMISED LEASE PLAN. A SIGNAGE "ZONE" IS SHOWN ON THESE ELEVATIONS WHICH INDICATES AN AREA FOR POSSIBLE SIGN LOCATIONS.

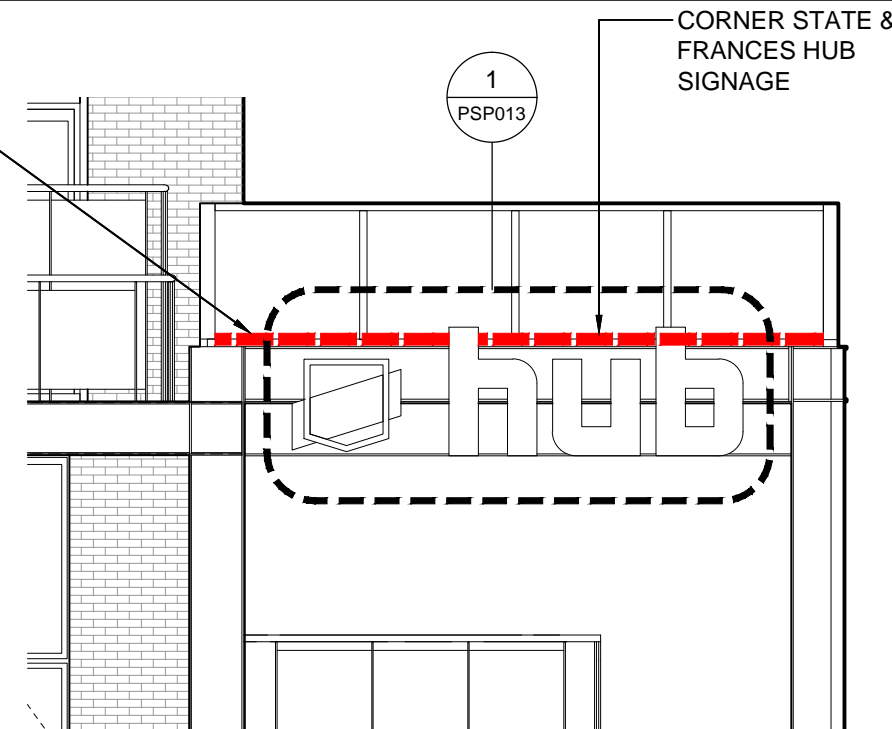
2) INDIVIDUAL TENANT SIGNAGE TO BE APPROVED SEPARATELY BY CITY OF MADISON UNDER SUBMISSION MY TENANT.



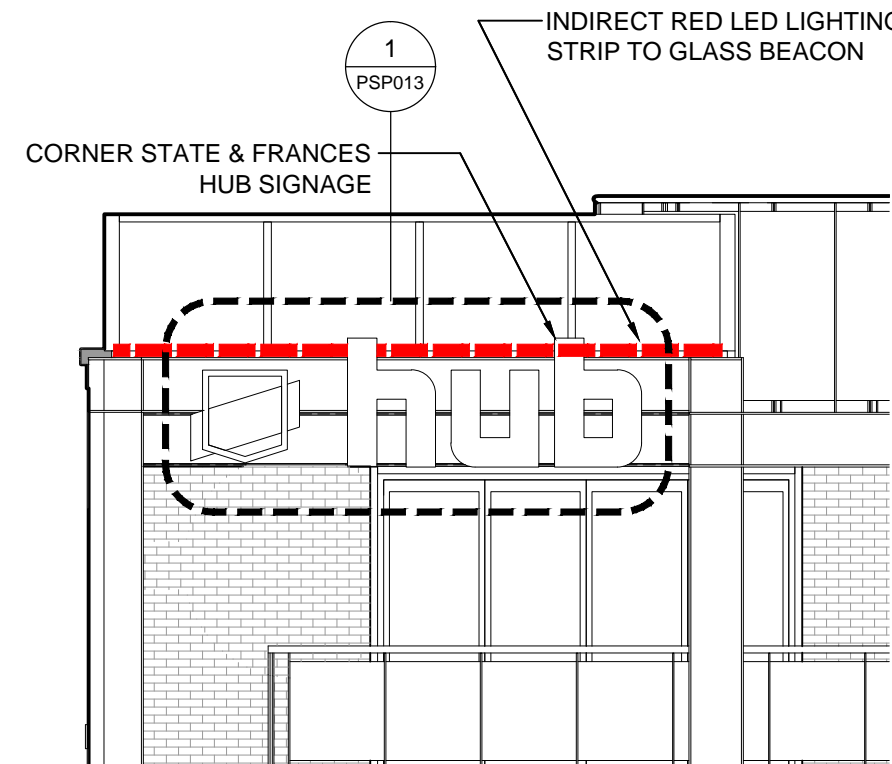
1 FRANCES STREET - RESIDENTIAL ENTRY
 PSP002PSP010 SCALE: 3/16"=1'-0"



4 SECTION - RESIDENTIAL ENTRY
 - PSP010 SCALE: 3/16"=1'-0"



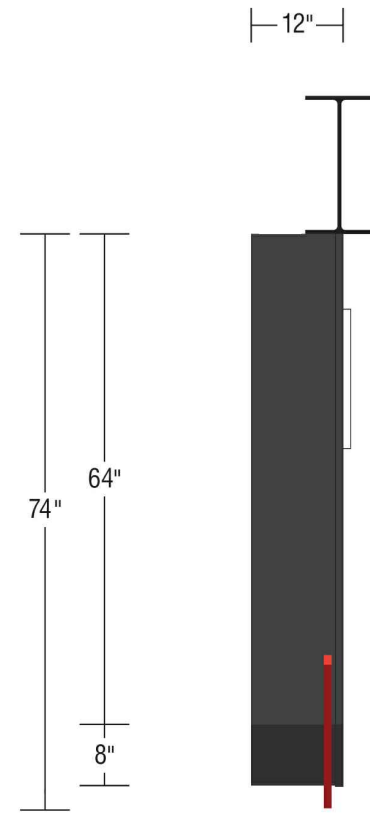
3 STATE STREET - HUB LOGO
 PSP002PSP010 SCALE: 3/16"=1'-0"



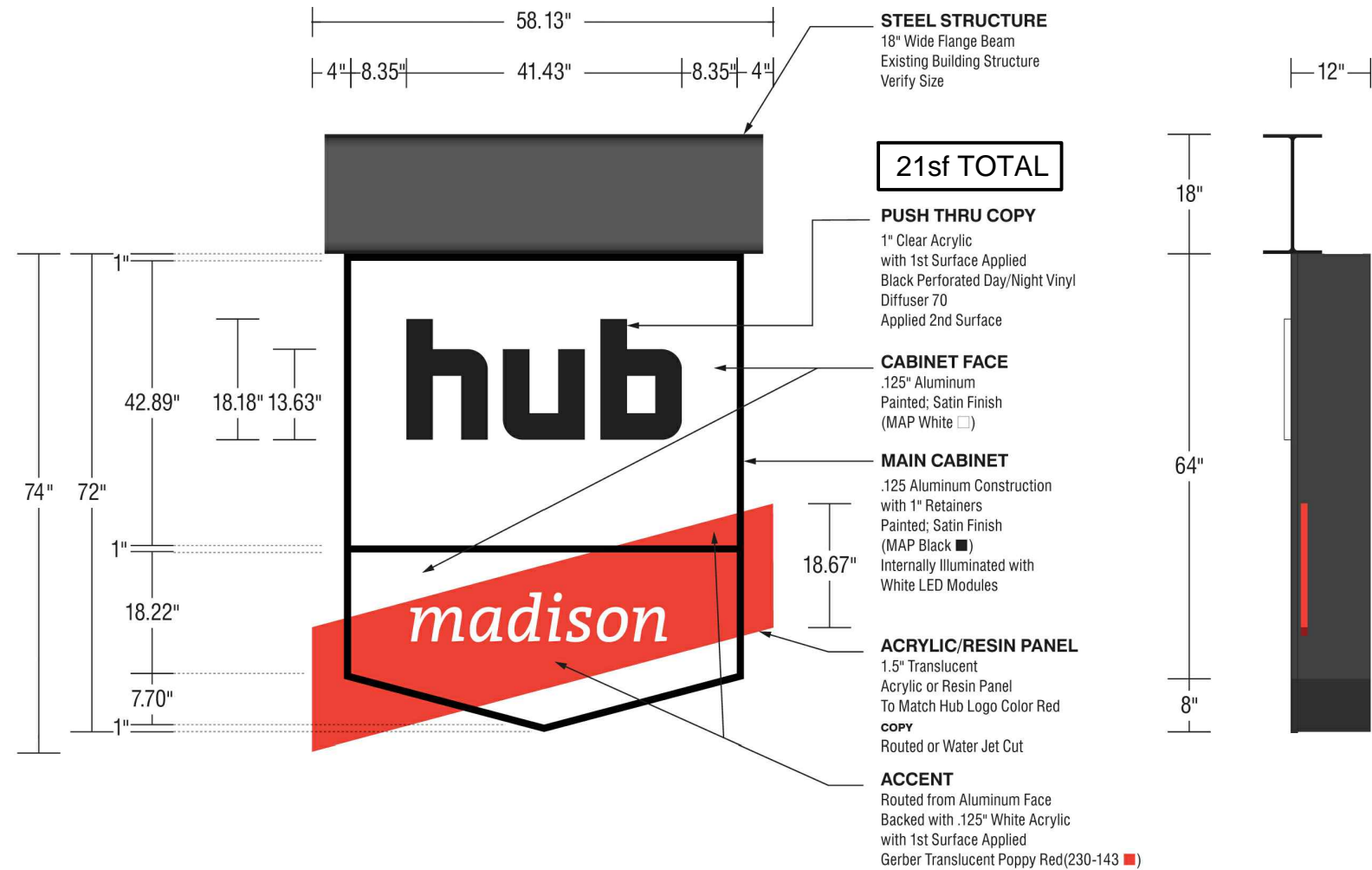
2 FRANCES STREET - HUB LOGO
 PSP002PSP010 SCALE: 3/16"=1'-0"

ANTUNOVICH ASSOCIATES ARCHITECTURE PLANNING INTERIOR DESIGN 224 WEST HURON STREET CHICAGO, ILLINOIS 60654 312.266.1126 FAX: 312.266.7123	Title:	Building Elevations UDC Signage & Lighting Submission Package	PSP010 Scale: NOTED October 29, 2014
	Project:	HUB AT MADISON	

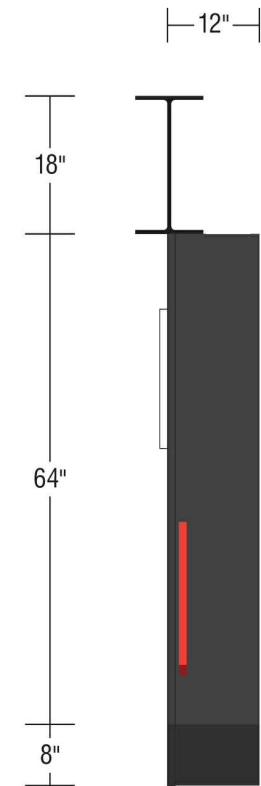
S:\CC - MADISON\ARCHITECTURE AND STUDIOS\SIGNAGE & LIGHTING\SP010 EXTERIOR ELEVATIONS - SIGNAGE PACKAGE.DWG



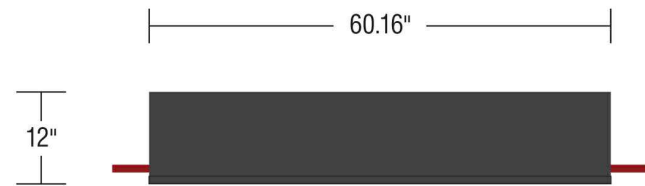
A Side Detail
SCALE 1/2" = 1'0"



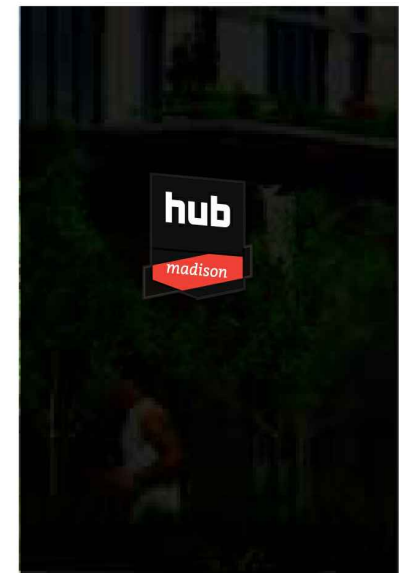
B Elevation Detail
SCALE 1/2" = 1'0"



C Side Detail
SCALE 1/2" = 1'0"



D Plan View
SCALE 1/2" = 1'0"



1	FRANCES STREET - RESIDENTIAL ENTRY DETAILS
PSP010	PSP011
SCALE: 1/2"=1'-0"	

ANTUNOVICH ASSOCIATES
ARCHITECTURE PLANNING INTERIOR DESIGN
224 WEST HURON STREET CHICAGO, ILLINOIS 60654 312.266.1126 FAX: 312.266.7123

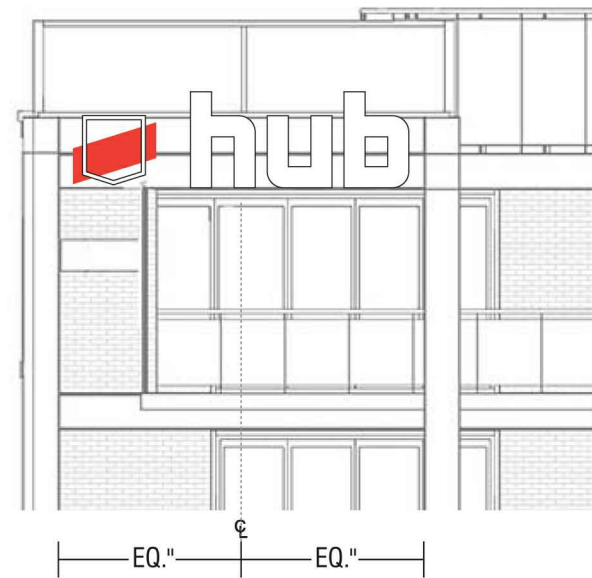
Title: Signage Details
UDC Signage & Lighting Submission
Package
Project: **HUB AT MADISON**

PSP011
Scale: NOTED
October 29, 2014

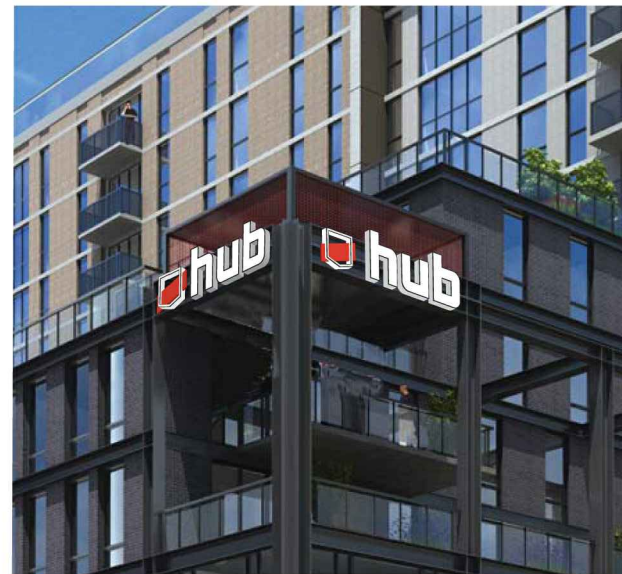
S.C.C. MADISON/COURTESIES AND STUDIES/SHANE & LIGHTING/PROTOTYPING EXTERIOR ELEVATIONS SIGNAGE PACKAGE/DWG



A North Elevation
SCALE 1/8" = 1'-0"



B West Elevation
SCALE 1/8" = 1'-0"



C Rendering
NOT TO SCALE

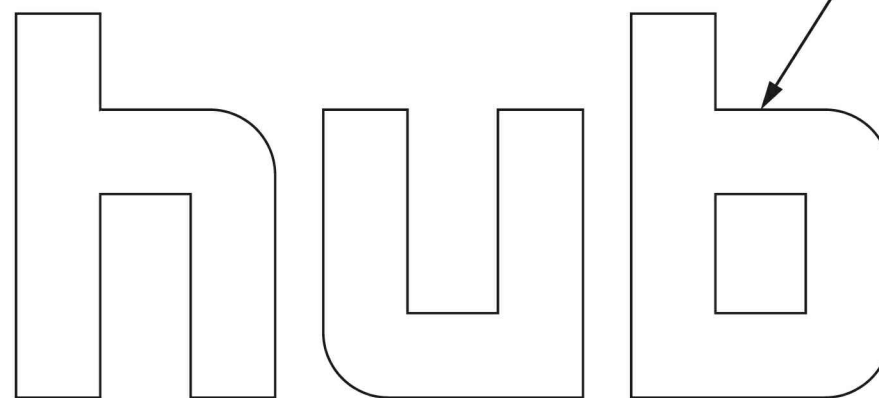
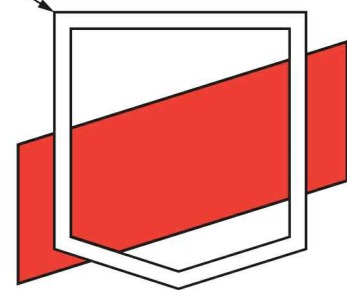


D Night View Rendering
NOT TO SCALE

ILLUMINATED PAN CHANNEL LETTER

- FACES**
.177 White Lexan
Vinyl Applied 1st Surface
Fluorescent Poppy Red (230-143) ■
Fluorescent Vinyl Painted; Satin Finish
(MAP White □)
- RETURNS**
12" Deep .040 Aluminum Returns
Painted; Satin Finish
(MAP Black ■)
- TRIM CAP**
1" Trim Cap
Painted; Satin Finish
(MAP Black ■)
- BACKS**
.063 Aluminum Backs
- ILLUMINATION**
White LED
GE Tetra MAX2 7100K
- INSTALLATION**
Flush Mount To Wall As Required

48"
34-9/16" (+/-)



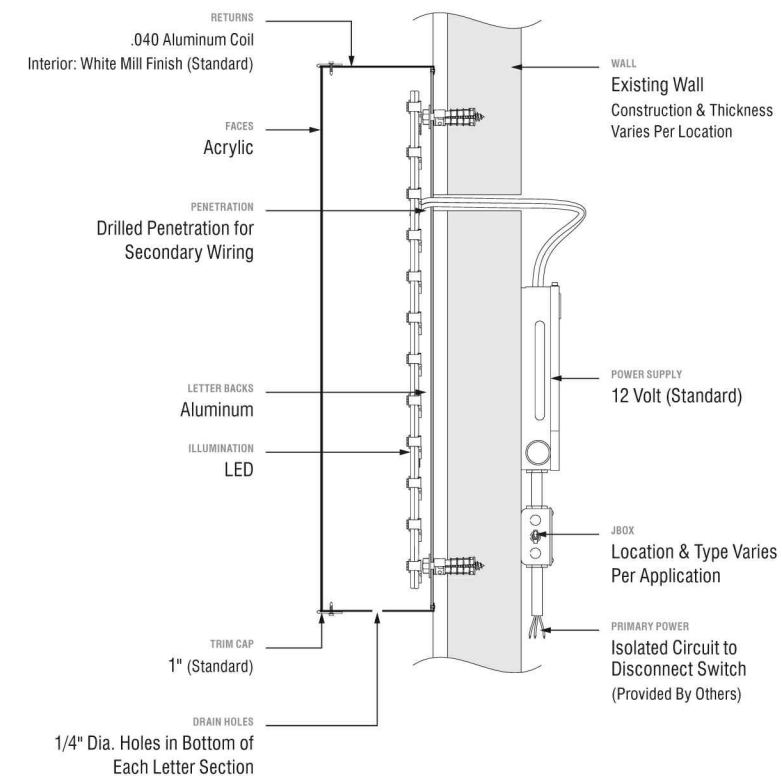
37sf TOTAL

ILLUMINATED PAN CHANNEL LETTER

- FACES**
.177 White Lexan
- RETURNS**
12" Deep .040 Aluminum Returns
Painted; Satin Finish
(MAP White □)
- TRIM CAP**
1" Trim Cap
Painted; Satin Finish
(MAP Black ■)
- BACKS**
.063 Aluminum Backs
- ILLUMINATION**
White LED
GE Tetra MAX2 7100K
- INSTALLATION**
Flush Mount To Wall As Required

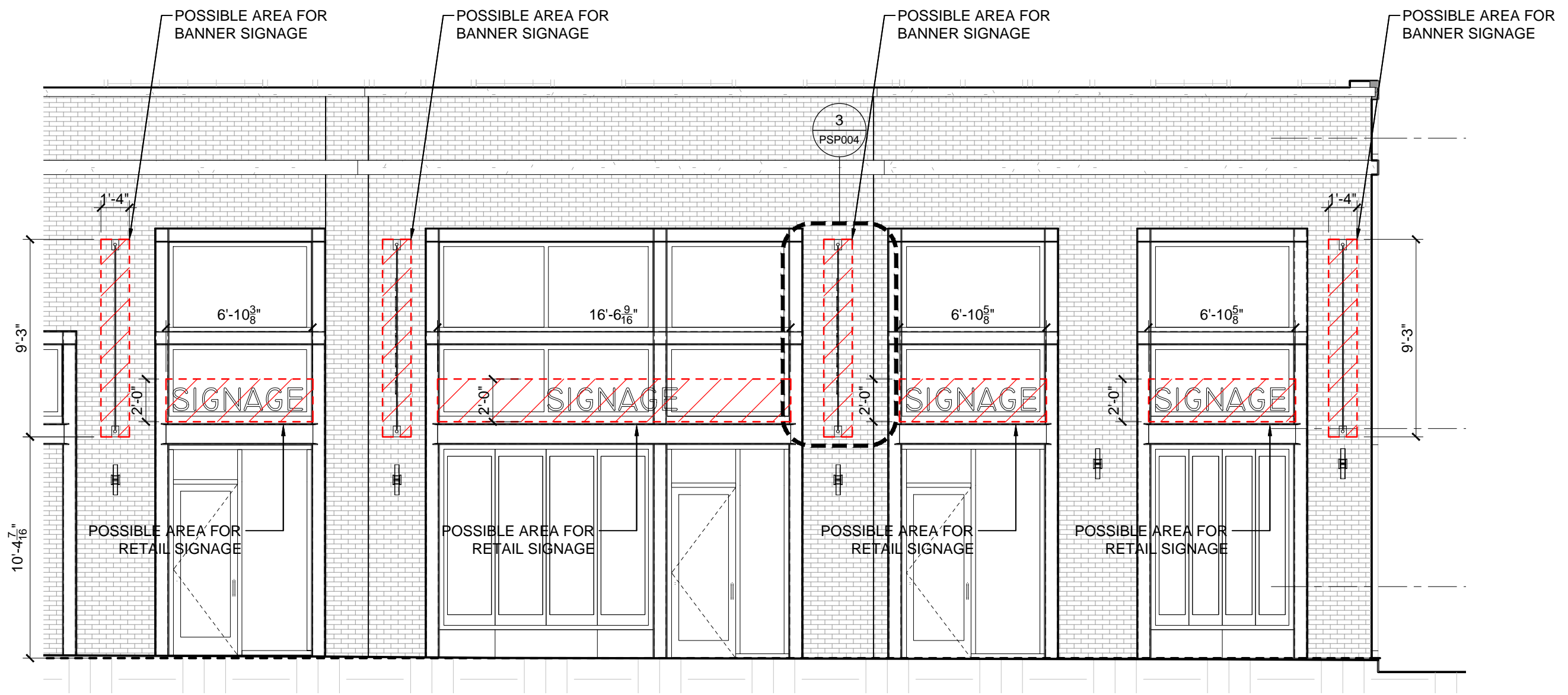
41.125" 109-3/16" 150-5/16"

B North Elevation Detail
SCALE 1/2" = 1'-0"



B Section Detail - Typical
Pan Channel Letter / LED Internally Illuminated / Flush Mounted

NOTE:
 1) THE FIRST FLOOR OF THE BUILDING IS A MULTI-TENANT RETAIL FLOOR. TENANT SIGNAGE SIZES AND LOCATIONS WILL BE DEPENDANT ON FINAL DEMISED LEASE PLAN. A SIGNAGE "ZONE" IS SHOWN ON THESE ELEVATIONS WHICH INDICATES AN AREA FOR POSSIBLE SIGN LOCATIONS.
 2) SIGN TYPE TO INCLUDE ILLUMINATED CHANNEL LETTERING.



1 FRANCES STREET - RETAIL SPACE
 PSP003 PSP013 SCALE: 3/16"=1'-0"

ANTUNOVICH ASSOCIATES ARCHITECTURE PLANNING INTERIOR DESIGN 224 WEST HURON STREET CHICAGO, ILLINOIS 60654 312.266.1126 FAX: 312.266.7123	Title: Building Elevations UDC Signage & Lighting Submission Package	PSP013 Scale: NOTED
	Project: HUB AT MADISON	October 29, 2014

S.D.C. - MADISON/CADSKETCHES AND STUDIES/SIGNAGE & LIGHTING/PSP013 EXTERIOR ELEVATIONS - SIGNAGE PACKAGE/DWG

Job Name:
5819T HUB

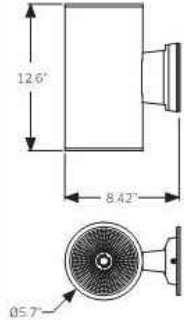
Catalog Number:
1016-2LEDRA2-BK (6"/ROUND
WALL CYLINDER/LED/BLACK)
Notes:

Type:
TYPE - OC

dals

1016-2LEDRA2

Cylindre DEL bidirectionnel 6" LED up & down cylinder



FINISH



PARTICULARITÉS / FEATURES

Le cylindre est fabriqué avec une extrusion d'aluminium. / The cylindrical housing is fabricated of extruded aluminum.
Les modules DEL sont installés sur des dissipateurs de chaleur en aluminium pour maximiser leur refroidissement. / The LED modules are mounted on aluminum heat sinks to maximize heat dissipation.
Les réflecteurs en aluminium brillant offrent des faisceaux lumineux de 40°. / Bright aluminum reflectors provide 40° beam spreads.
Le luminaire est scellé par des lentilles de verre trempé. / The luminaire is sealed with clear tempered glass lenses.
Tous les composants sont revêtus d'une peinture en poudre cuite au four qui leur donne un fini durable. / All components are coated with baked powder coat paint, giving them a highly durable finish.

SPÉCIFICATIONS / SPECIFICATIONS

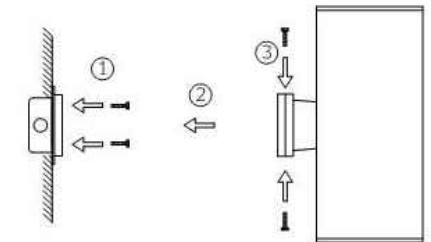
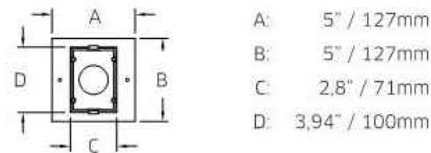
- Module / Module: 2LEDRA2
- Lumen / Lumen: 2 x 1050lm
- Température de couleur / Color temperature: 4000°K
- CRI / LED CRI: 80+
- Puissance / Wattage: 2 x 15W
- Courant / Current: 1.4A
- Tension d'entrée / Input voltage: 120V, 277V
- Tension / Voltage: 21.4V
- Transformateur intégré / Built-in driver
- Angle du faisceau / Beam angle: 40°
- Durée de vie DEL / LED life: 50 000 heures

INFORMATION TECHNIQUE / TECHNICAL INFO.

- Dimensions / Dimensions: Ø5,7", 12,6" x 8,42"
- Isolation / Insulation: CLASS I
- Classement / Rating: IP65

CERTIFICATION / CERTIFICATION

- Approval : ETL #3123001
- 5 years warranty



dals

DALS LIGHTING INC.
30 Rolland Briere, suite 104, Blairville QC J7C 5R8
TEL: 450-430-1818 FAX: 450-430-1850
www.dalslighting.com

1016_SPEC.p 1 of 1

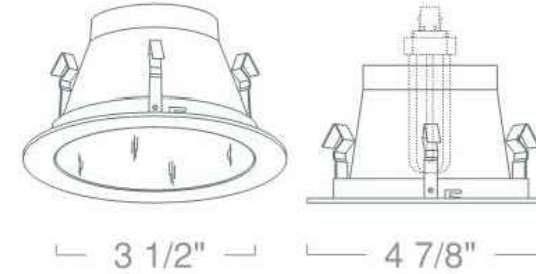
LITON
LIGHTING

PROJECT INFORMATION
TYPE: PROJECT:
CATALOG#:

Catalog Number:
LH99/LR999C (4"/INC CAN/ALZAK/
A19 RATED)
Notes:

**TYPE - OA
AND OA-1**

**LR999 - SHALLOW REFLECTOR
4" COMPACT FLUORESCENT TRIMS**



FEATURE:



SPECIFICATION

CFL 13W Max DTT
26W TTT
Application: Used for general lighting applications. The 4" reflector trim, with its clean and durable die-cast construction ring, provides a smooth illumination in short throw distances such as general spaces as well as tighter spaces such as soffits and counters.
Gasket: Supplied with gasket to prevent light leakage and unsightly heat streaks on ceiling surface.
Mounting: Steel pressure springs mounted on trim to ensure positive retention inside housing.
Reflector Finish: Spun Aluminum Reflector Available in Black Reflector/ White Ring, Clear Reflector/ White Ring, All Natural, All Copper, All Mocha, Satin Haze Reflector/ White Ring, Satin Reflector/ Natural Ring and White Reflector/ White Ring.
Label: UL Listed, cETL Listed

COMPATIBILITY

 DEEP HOUSING	 IC AIRTIGHT HOUSING	 DEEP REMODEL HOUSING
 SHALLOW HOUSING	 SHALLOW/REMODEL HOUSING	

Note: Wattage limitations on compatible items must be met.

ORDERING

ORDERING EXAMPLE : LR999B

LR999	REFLECTOR FINISH
B	:Black Reflector/ White Ring
C	:Clear Reflector/ White Ring
N	:All Natural
CO	:All Copper
MO	:All Mocha
S	:Satin Haze Reflector/ White Ring
SN	:Satin Reflector/ Natural Ring
W	:White Reflector/ White Ring

* Comes standard with a matching ring finish.

Tel: 323.904.0200 Product specifications subject to change without notice. www.liton.com

MEMBER OF
eema
LIGHTING ASSOCIATION

4" COMPACT FLUORESCENT TRIMS

File Located online www.liton.com/spec

ID #: 377

ANTUNOVICH ASSOCIATES
ARCHITECTURE PLANNING INTERIOR DESIGN
224 WEST HURON STREET CHICAGO, ILLINOIS 60654 312.266.1126 FAX: 312.266.7123

Title: Lighting Cut Sheets
UDC Signage & Lighting Submission
Package
Project: HUB AT MADISON

PSP014
Scale: NOTED
October 29, 2014



FEATURES

Application

The PG is an indoor/outdoor, die-cast architectural emergency unit. It is a wet location listed, emergency luminaire with high-output LED technology that provides path of egress illumination for mounting over entrance/exit ways and perimeter walkways. Spectron® self-testing/self-diagnostic electronics are included standard. A battery heater for cold temperature operation is available as an option.

Construction

Housing and mounting plate are constructed of 0.125" die-cast aluminum and 0.125" closed-cell, medium density, neoprene gasket. The acrylic lens allows 92% light transmission. The reflector is electro-polished aluminum with 95% reflectance. Housing finish is powder coated electro-deposition paint available in four colors: dark bronze, white, platinum silver and black.

Installation

Universal housing knockouts for mounting to standard 3 1/2" and 4" octagon and 4" square electrical boxes. A 1/2" - 1/4 NPT threaded conduit opening is provided at the top of the housing and sealed with a closure plug. The back plate mounts to the wall surface using installer supplied hardware. The housing "snaps" to the back plate by a "pin and socket" arrangement, and is secured with two Fillister head screws. AC Lockout feature prevents battery discharge prior to initial unit power-up saving installation time.

Lamps

Four high-output, long life LED lamps arranged in redundant pairs.

Compliances

- UL 924 Listed (emergency models only)
- UL Wet Location Listed
- NFPA 101 Life Safety Code
- NFPA 70 National Electrical Code
- OSHA
- U.S. Patent No. D627,916.

Warranty

Three-years full for unit, electronics and battery.

ORDERING GUIDE

PG	W	-	HTR
Series	Finish		Options
	W White Z Dark Bronze P Platinum Silver B Black		HTR Battery Heater (Add Suffix to Model)

PG
Indoor/Outdoor Emergency Lighting Unit

Catalog Number: **TYPE - ER**
 Comments:



Reference "Remote Heads and Fixtures" specification sheet for information on matching PG remote



PGR Remote LED



6" LED Surface Mount Cylinder
LD6LED3S
LD6LED4S
 Wet Location
 120V, 277V

APPLICATIONS:

LiteForms™ LD6LED3S & LD6LED4S Series is a 6" direct surface mount LED cylinder designed to combine superior brightness control with energy savings and long lamp life. Suitable for a variety of commercial, retail, and institutional applications to achieve illumination patterns on vertical walls or columns. Optical lens options in spot, medium, or wide distribution are ideal for higher ceiling applications such as transportation terminals or atrium areas. Suitable for use in ambient temperatures up to 30°C (86°F) during operation.

HOUSING:

Seamless .058" thick extruded aluminum cylinder body with durable powder coat paint finish in a variety of architectural colors including Prescolite's exclusive Zet, metallic silver.

REFLECTOR:

High purity spun aluminum self-flanged reflector with iridescence suppressed Alzak anodized finish retained by factory installed spring clips and safety cable for ease of maintenance. Provided with integral clear tempered glass lens to protect LEDs.

LED LIGHT ENGINE:

The LED light engines are equipped with (10) high brightness white LEDs (2700K, 3500K, 4000K, or 5000K) on a metal clad circuit board. Secured to an integral die cast

aluminum heat sink for excellent thermal management. System designed for optimal life and lumen maintenance (50,000 hours at 70% average lumen maintenance*). *LED life calculations are based upon maintaining application LED junction temperatures and drive currents at or below manufacturer's requirements per IESNA- LM-80-08 test data.

Optics: Vacuum metallized injection molded optical reflector features (10) parabolic LED modules with Prescolite's patented (U.S. Patent No. 6,254,256) American Matte™ finish to produce uniform illumination. Optional optical lenses provide a choice of spot, medium, or wide distribution for added versatility.

LED DRIVER:

Energy efficient solid state constant current electronic driver with 50,000 hour minimum anticipated life. Meets UL Class 2, inherent short-circuit protection, self limited, overload protected.

INSTALLATION:

Easy installation onto standard J-Box.

CERTIFICATIONS:

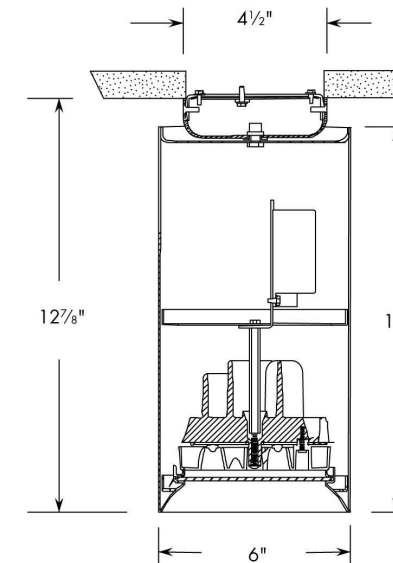
CSA certified to US and Canadian safety standards. Suitable for wet locations.

WARRANTY:

5 year warranty

TYPE - OH
AND OH-1
LiteForms

For conversion to millimeters, multiply inches by 25.4
 Not to Scale



CATALOG NUMBER: EXAMPLE: LD6LED4SW35K8FL35 277V Z

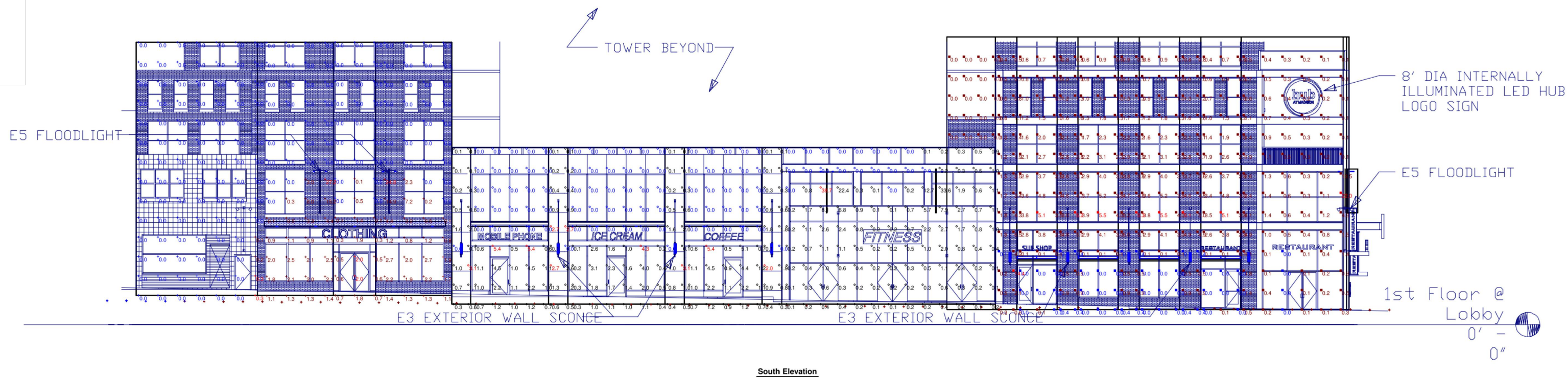
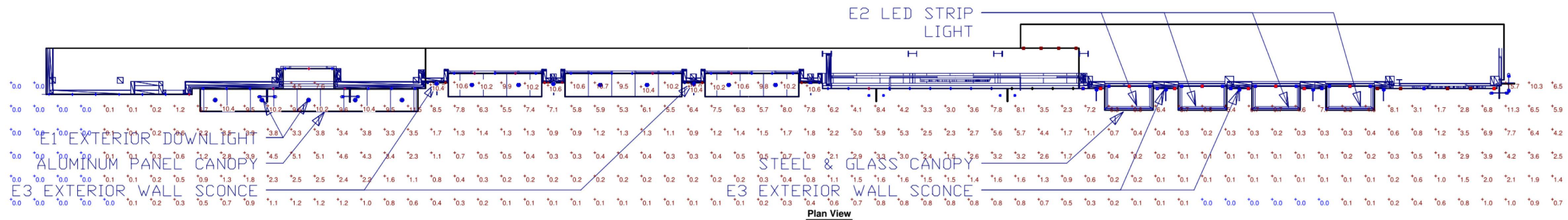
CYLINDER	LED COLOR	LED COLOR TEMP	CRI	BEAM ANGLE	VOLTAGE	REF. COLOR	CYLINDER FINISH
<input type="checkbox"/> LD6LED 6" LED cylinder	<input type="checkbox"/> W White	<input type="checkbox"/> 27K 2700 Kelvin <input type="checkbox"/> 35K 3500 Kelvin <input type="checkbox"/> 40K 4000 Kelvin <input type="checkbox"/> 50K 5000 Kelvin	<input type="checkbox"/> 8 Nominal 80+ CRI	<input type="checkbox"/> Blank Vacuum metallized reflector with 45° cutoff <input type="checkbox"/> FL35 Lensed optic with 35° wide distribution and Zet painted faceplate <input type="checkbox"/> MD25 Lensed optic with 25° medium distribution and Zet painted faceplate <input type="checkbox"/> SP18 Lensed optic with 18° spot distribution and Zet painted faceplate	<input type="checkbox"/> Blank 120V only <input type="checkbox"/> 277V 120/277V	<input type="checkbox"/> Blank Clear Alzak <input type="checkbox"/> CG Champagne Gold Alzak <input type="checkbox"/> BL Black Alzak <input type="checkbox"/> WE Wheat Alzak <input type="checkbox"/> LW Light Wheat Alzak <input type="checkbox"/> PW Pewter Alzak <input type="checkbox"/> WH White Paint	<input type="checkbox"/> WH White <input type="checkbox"/> BL Black <input type="checkbox"/> Z Zet <input type="checkbox"/> BA Brushed Aluminum <input type="checkbox"/> BZ Bronze
LED GENERATION							
<input type="checkbox"/> 3 14W, 700 Lumen LED							
<input type="checkbox"/> 4 28W, 1100 Lumen LED							
MOUNTING							
<input type="checkbox"/> 5 Surface							
REF. FINISH							
<input type="checkbox"/> Blank Specular							
<input type="checkbox"/> SS Semi-Specular							

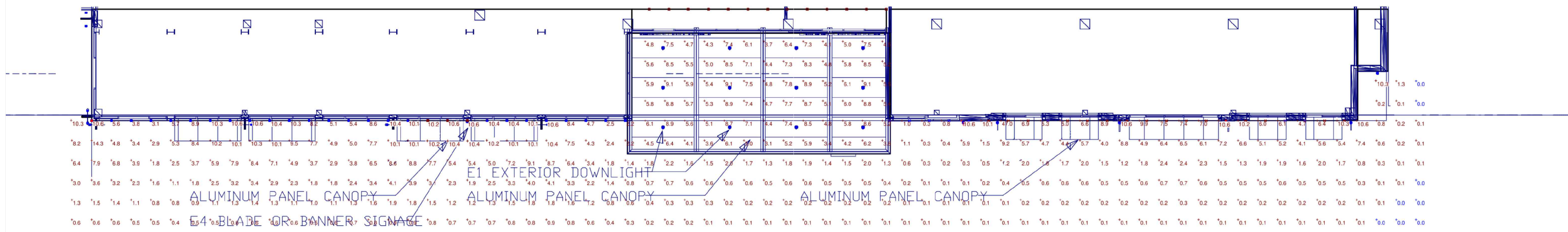


In a continuing effort to offer the best product possible we reserve the right to change, without notice, specifications or materials that in our opinion will not alter the function of the product. Web: www.prescolite.com • Tech Support: (888) 777-4832

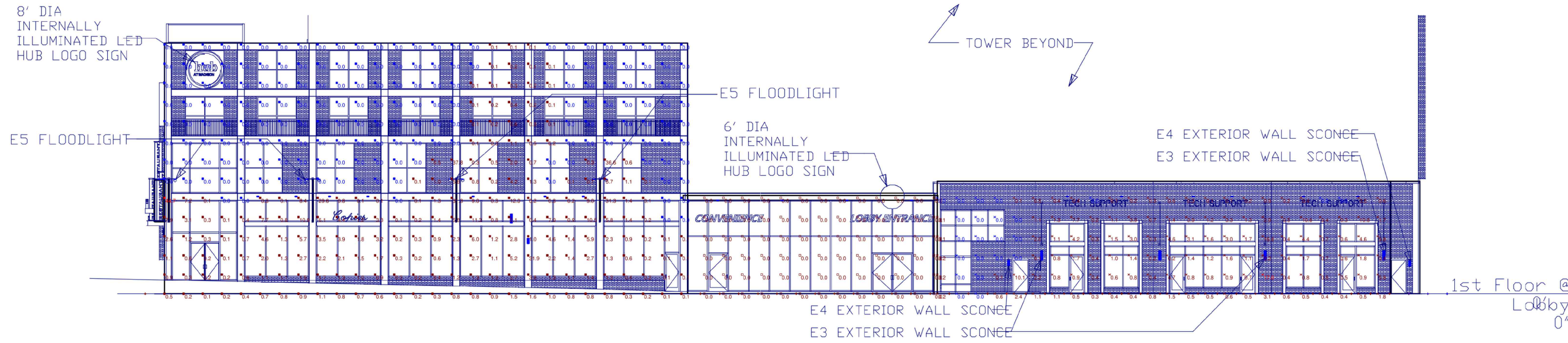
LFO-LED-012

ANTUNOVICH ASSOCIATES ARCHITECTURE PLANNING INTERIOR DESIGN 224 WEST HURON STREET CHICAGO, ILLINOIS 60654 312.266.1126 FAX: 312.266.7123	Title: Lighting Cut Sheets UDC Signage & Lighting Submission Package	PSP015 Scale: NOTED October 29, 2014
	Project: HUB AT MADISON	





Plan View



South Elevation

1	FRANCES STREET - PHOTOMETRICS
-	-
SCALE: NTS	

ANTUNOVICH ASSOCIATES

ARCHITECTURE PLANNING INTERIOR DESIGN

224 WEST HURON STREET CHICAGO, ILLINOIS 60654 312.266.1126 FAX: 312.266.7123

Title: Photometric Plans & Elevations
UDC Signage & Lighting Submission
Package

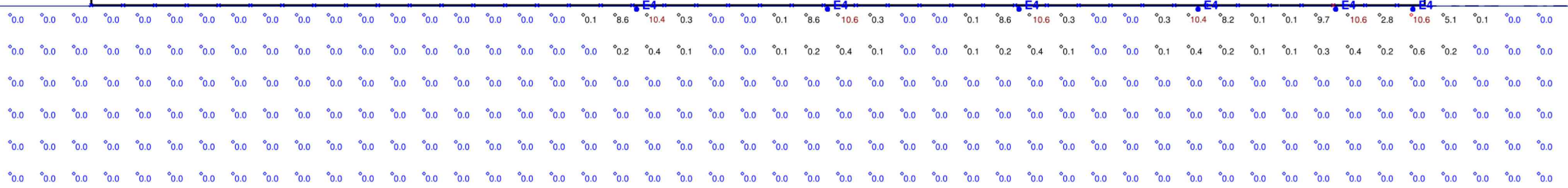
Project: HUB AT MADISON

PSP017

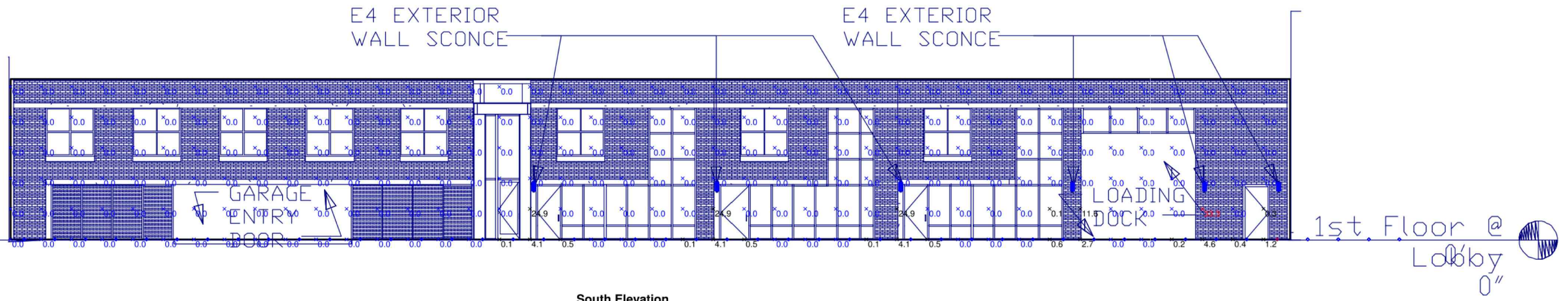
Scale: NOTED

October 29, 2014

S.C.C. - ARCHITECTURAL SKETCHES AND STUDIES/SCENES & LIGHTING/PHOTO EXTERIOR ELEVATIONS - SIGNAGE PACKAGE/DWG



Plan View



South Elevation

1	GILMAN STREET - PHOTOMETRICS
-	-

SCALE: NTS

ANTUNOVICH ASSOCIATES
 ARCHITECTURE PLANNING INTERIOR DESIGN
 224 WEST HURON STREET CHICAGO, ILLINOIS 60654
 312.266.1126 FAX: 312.266.7123

Title: Photometric Plans & Elevations
 UDC Signage & Lighting Submission
 Package
 Project: HUB AT MADISON

PSP018
 Scale: NOTED
 October 29, 2014

S:\CC - MADISON\GIBKETCHES AND STUDIES\SIGNAGE & LIGHTING\SP018 EXTERIOR ELEVATIONS - SIGNAGE PACKAGE.DWG



1	STATE STREET -PERSPECTIVE-1
-	-

SCALE: NTS

ANTUNOVICH ASSOCIATES
 ARCHITECTURE PLANNING INTERIOR DESIGN
 224 WEST HURON STREET 312.266.1126
 CHICAGO, ILLINOIS 60654 FAX: 312.266.7123

Title: Perspective Views
 UDC Signage & Lighting Submission
 Package
 Project: **HUB AT MADISON**

PSP019
 Scale: NOTED
 October 29, 2014

S.C.C. - ARCHITECTURAL SKETCHES AND STUDIES SIGNAGE & LIGHTING PERMIT EXTERIOR ELEVATIONS SIGNAGE PACKAGE.DWG



<p>1</p>	<p>STATE STREET -PERSPECTIVE-2</p>	<p>SCALE: NTS</p>	<p>ANTUNOVICH ASSOCIATES ARCHITECTURE PLANNING INTERIOR DESIGN 224 WEST HURON STREET 312.266.1126 CHICAGO, ILLINOIS 60654 FAX: 312.266.7123</p>	<p>Title: Perspective Views UDC Signage & Lighting Submission Package Project: HUB AT MADISON</p>	<p>PSP020 Scale: NOTED October 29, 2014</p>
----------	------------------------------------	-------------------	---	--	--

S.C.C. - ARCHITECTURAL SKETCHES AND STUDIES/SIGNAGE & LIGHTING/PROVIDE EXTERIOR ELEVATIONS/SIGNAGE PACKAGE/END



1	STATE & FRANCES STREET -PERSPECTIVE-3
-	SCALE: NTS

ANTUNOVICH ASSOCIATES
 ARCHITECTURE PLANNING INTERIOR DESIGN
 224 WEST HURON STREET CHICAGO, ILLINOIS 60654 312.266.1126 FAX: 312.266.7123

Title: Perspective Views
 UDC Signage & Lighting Submission
 Package
 Project: HUB AT MADISON

PSP021
 Scale: NOTED
 October 29, 2014

S.C.C. - MADISON/ARCHITECTS AND STUDIOS/SIGNAGE & LIGHTING/PERSPECTIVE EXTERIOR ELEVATIONS - SIGNAGE PACKAGE/DWG



1 STATE & FRANCES STREET -PERSPECTIVE-4
 SCALE: NTS

ANTUNOVICH ASSOCIATES
 ARCHITECTURE PLANNING INTERIOR DESIGN
 224 WEST HURON STREET CHICAGO, ILLINOIS 60654
 312.266.1126 FAX: 312.266.7123

Title: Perspective Views
 UDC Signage & Lighting Submission
 Package
 Project: HUB AT MADISON

PSP022
 Scale: NOTED
 October 29, 2014

S.C.C. - MADISON/CAD/SKETCHES AND STUDIES/SIGNAGE & LIGHTING/02/01/14 EXTERIOR ELEVATIONS - SIGNAGE PACKAGE/DWG



S.C.C. - ARCHITECTURE SKETCHES AND STUDIES SIGNAGE & LIGHTING PERIOD EXTERIOR ELEVATIONS SIGNAGE PACKAGE DWG

1	STATE & FRANCES STREET -PERSPECTIVE-5
-	-

SCALE: NTS

ANTUNOVICH ASSOCIATES
 ARCHITECTURE PLANNING INTERIOR DESIGN
 224 WEST HURON STREET CHICAGO, ILLINOIS 60654
 312.266.1126 FAX: 312.266.7123

Title: Perspective Views
 UDC Signage & Lighting Submission
 Package
 Project: HUB AT MADISON

PSP023
 Scale: NOTED
 October 29, 2014