



LITTLE STREET

MONROE STREET

SW BIKE PATH

REGENT STREET

REGENT STREET

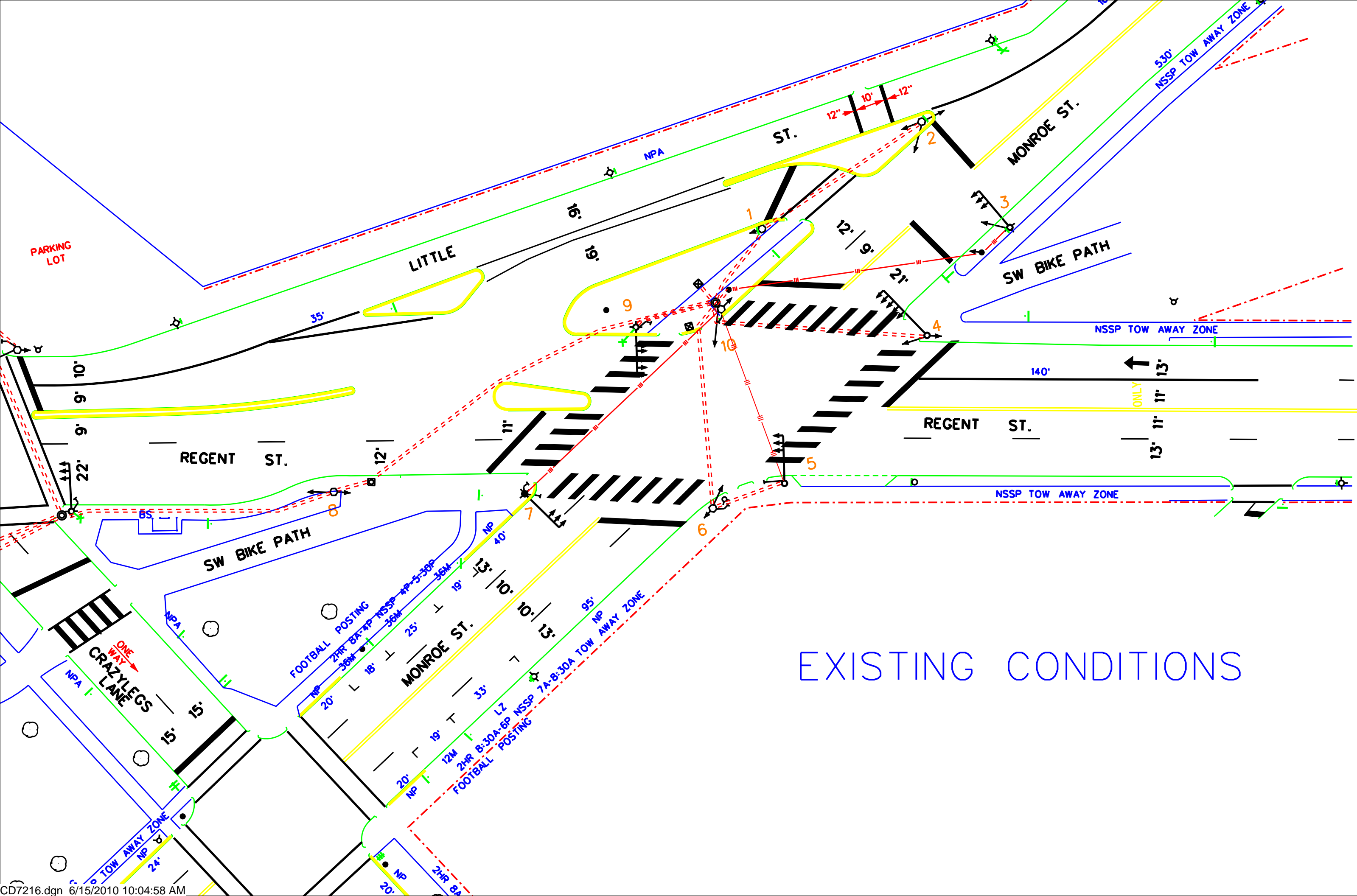
SW BIKE PATH

CRAZY LEGS LANE

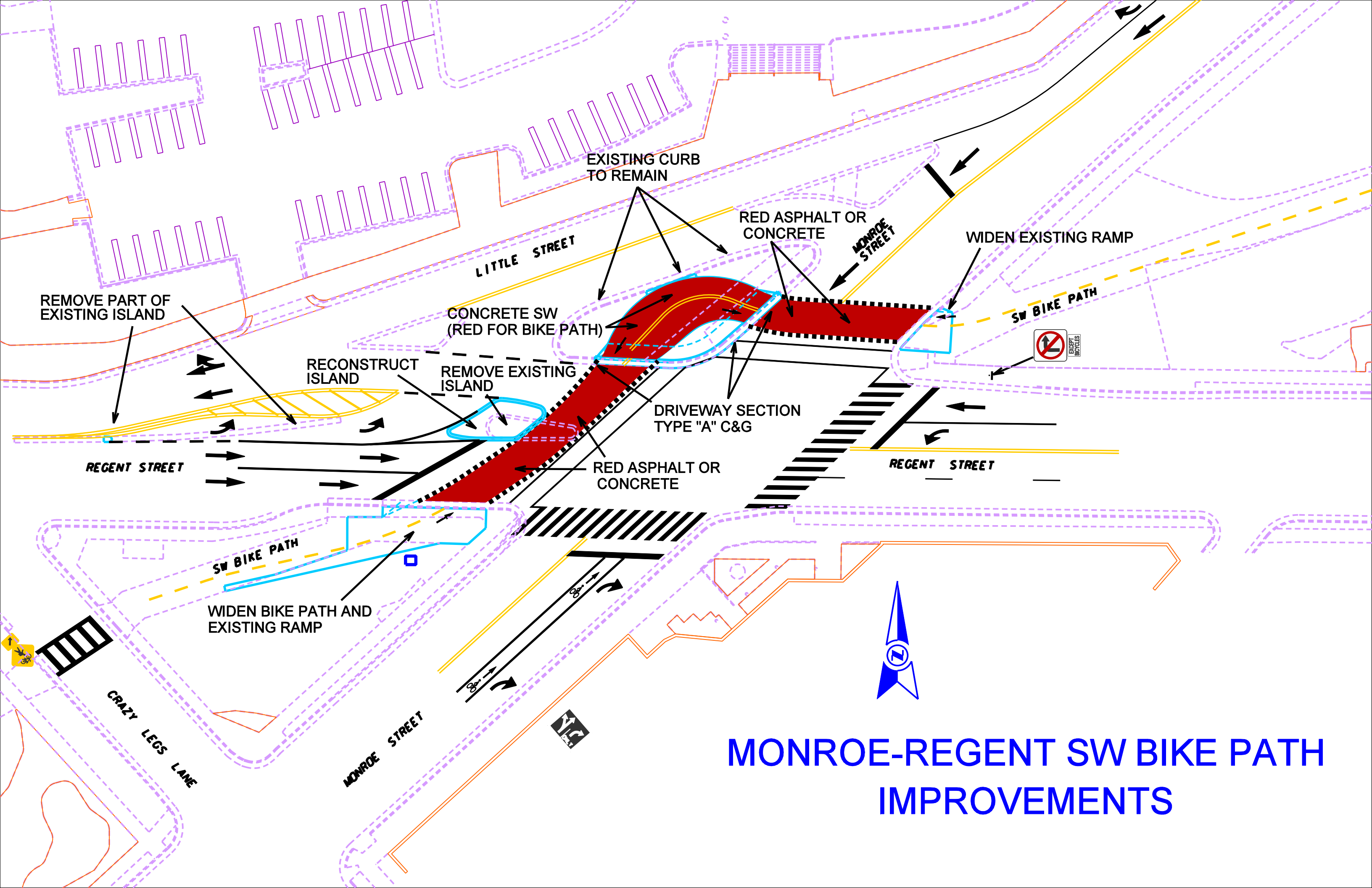


AERIAL PHOTO





EXISTING CONDITIONS



REMOVE PART OF EXISTING ISLAND

EXISTING CURB TO REMAIN

RED ASPHALT OR CONCRETE

WIDEN EXISTING RAMP

LITTLE STREET

MONROE STREET

SW BIKE PATH

RECONSTRUCT ISLAND

CONCRETE SW (RED FOR BIKE PATH)

REMOVE EXISTING ISLAND

DRIVEWAY SECTION TYPE "A" C&G

RED ASPHALT OR CONCRETE

REGENT STREET

REGENT STREET

SW BIKE PATH

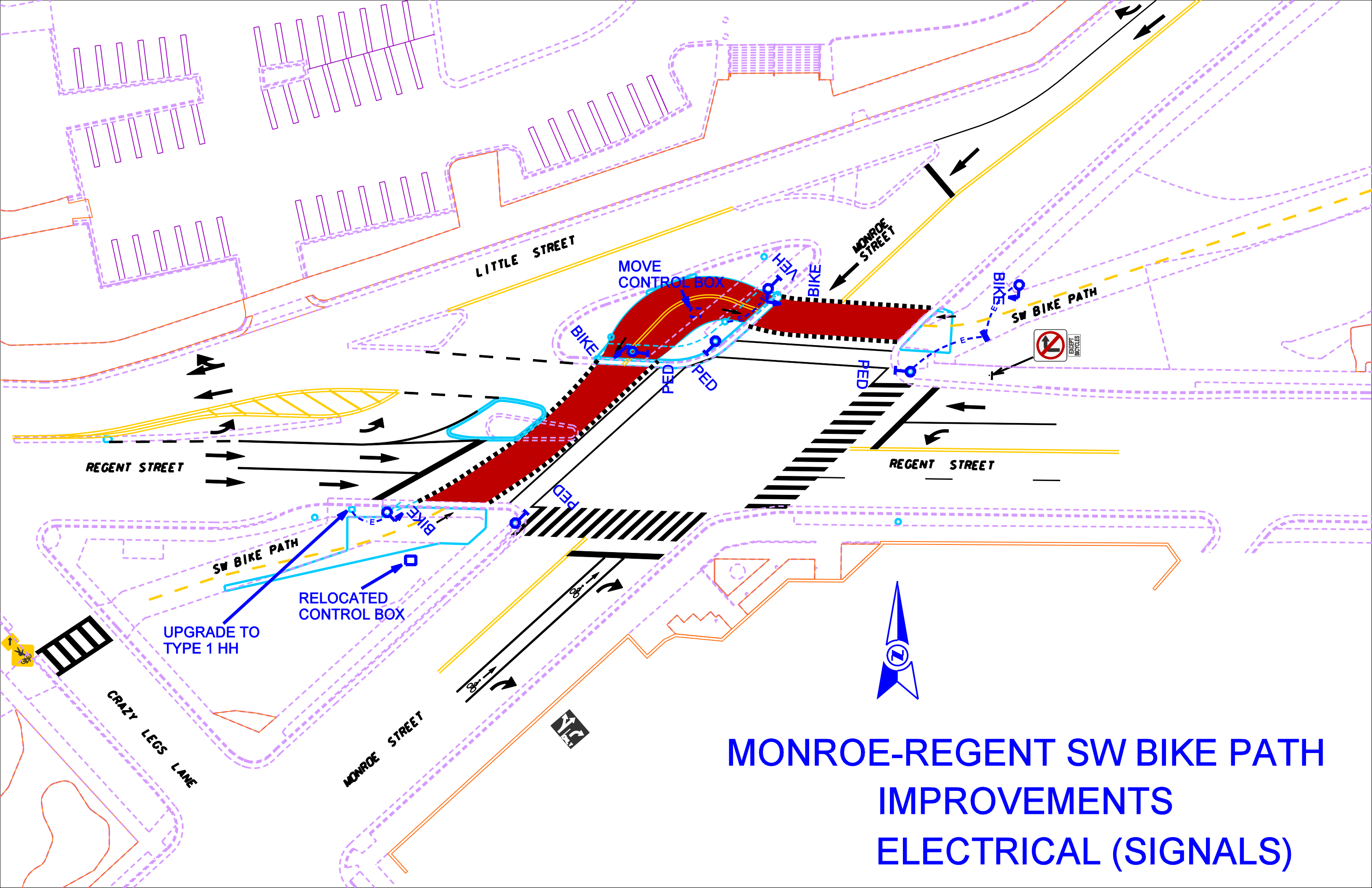
WIDEN BIKE PATH AND EXISTING RAMP

CRAZY LEGS LANE

MONROE STREET

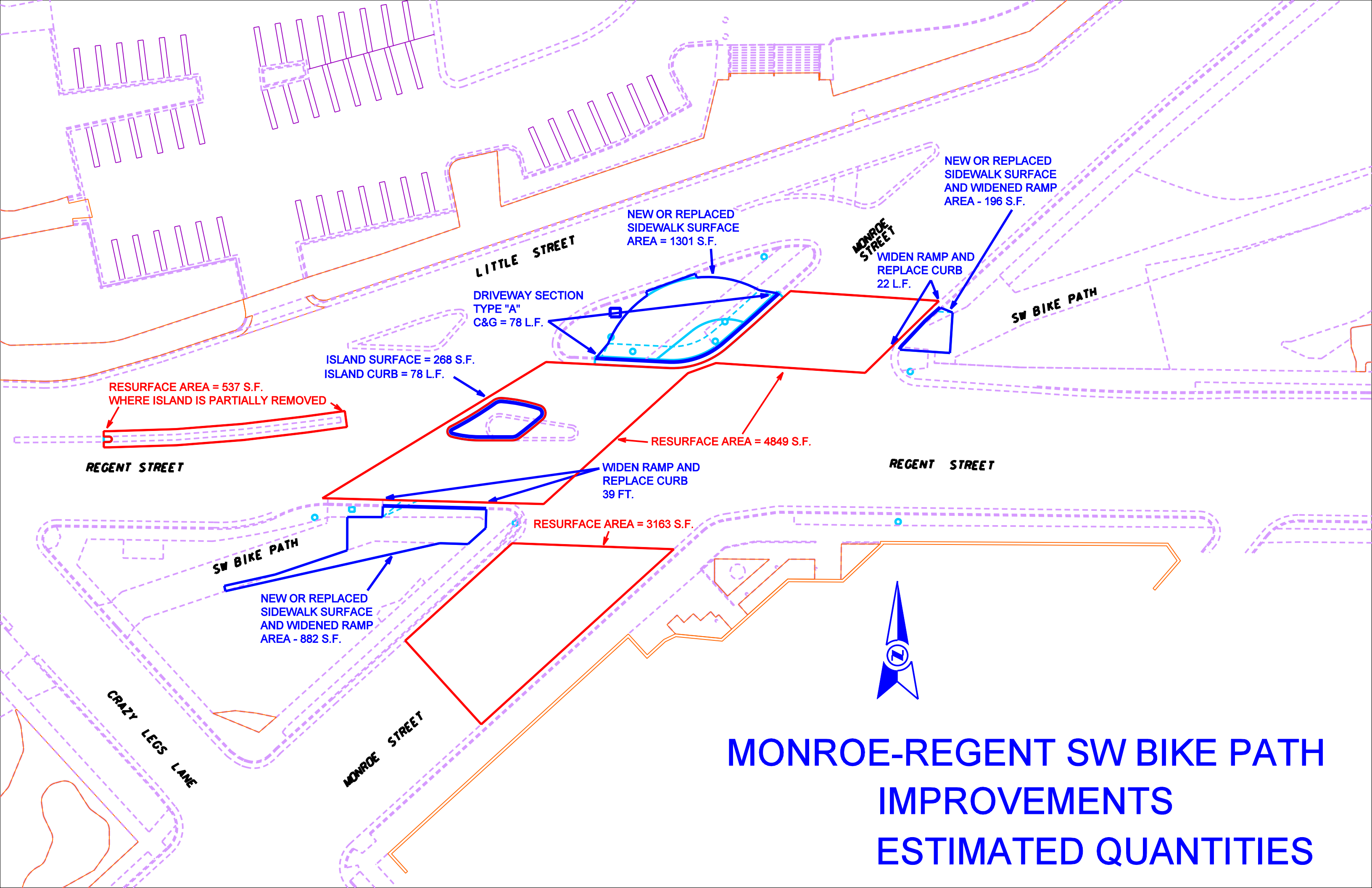


# MONROE-REGENT SW BIKE PATH IMPROVEMENTS



**MONROE-REGENT SW BIKE PATH  
IMPROVEMENTS  
ELECTRICAL (SIGNALS)**





NEW OR REPLACED  
SIDEWALK SURFACE  
AND WIDENED RAMP  
AREA - 196 S.F.

NEW OR REPLACED  
SIDEWALK SURFACE  
AREA = 1301 S.F.

LITTLE STREET

DRIVEWAY SECTION  
TYPE "A"  
C&G = 78 L.F.

MONROE  
STREET

WIDEN RAMP AND  
REPLACE CURB  
22 L.F.

SW BIKE PATH

ISLAND SURFACE = 268 S.F.  
ISLAND CURB = 78 L.F.

RESURFACE AREA = 537 S.F.  
WHERE ISLAND IS PARTIALLY REMOVED

REGENT STREET

RESURFACE AREA = 4849 S.F.

WIDEN RAMP AND  
REPLACE CURB  
39 FT.

REGENT STREET

SW BIKE PATH

RESURFACE AREA = 3163 S.F.

NEW OR REPLACED  
SIDEWALK SURFACE  
AND WIDENED RAMP  
AREA - 882 S.F.

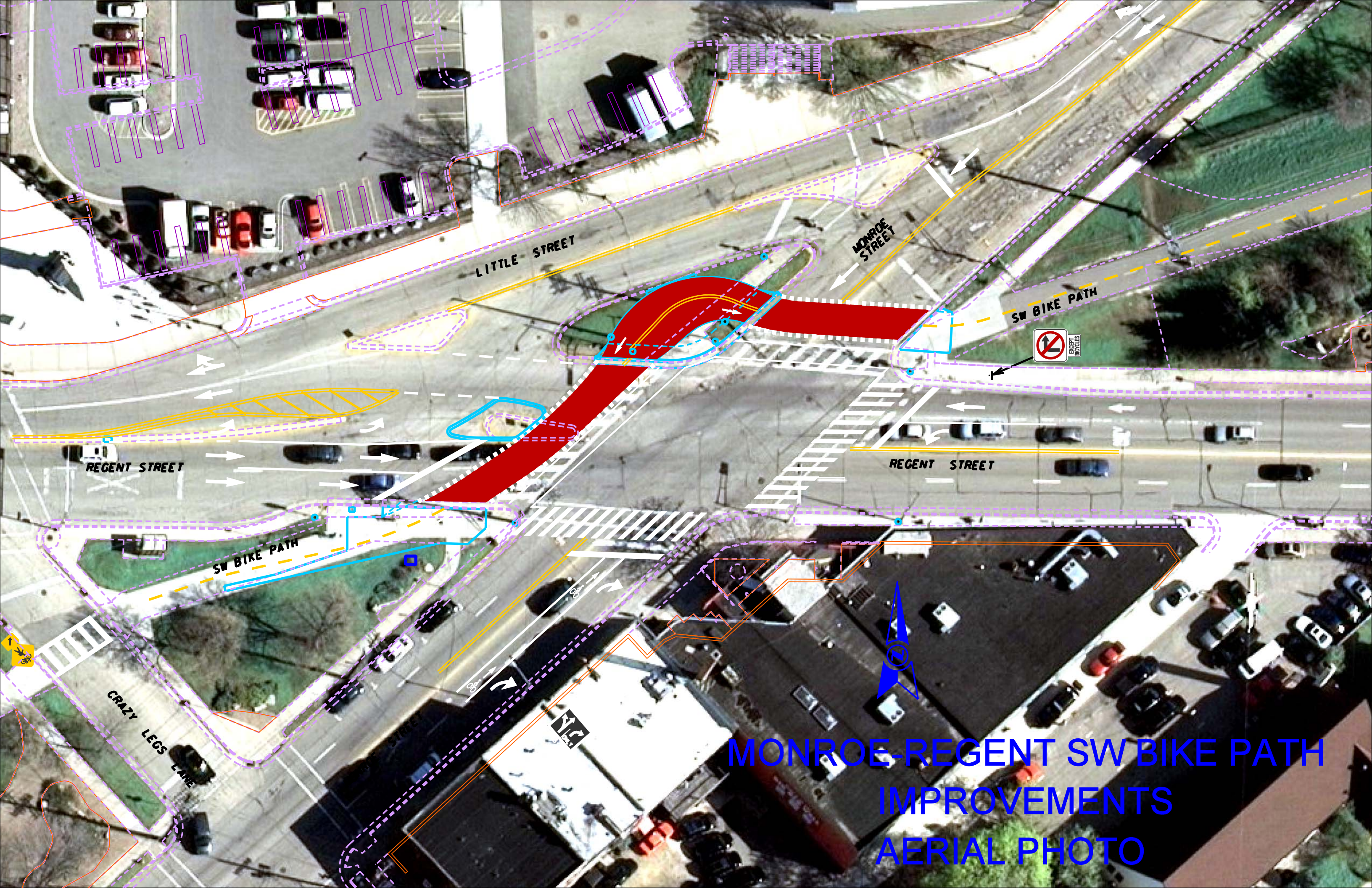
CRAZY LEGS LANE

MONROE STREET



# MONROE-REGENT SW BIKE PATH IMPROVEMENTS ESTIMATED QUANTITIES





LITTLE STREET

MONROE STREET

SW BIKE PATH

REGENT STREET

REGENT STREET

SW BIKE PATH

CRAZY LEGS LANE



MONROE-REGENT SW BIKE PATH  
IMPROVEMENTS  
AERIAL PHOTO