

929 East Washington Avenue Hotel

929 E. Washington Ave.
Madison, WI
2016.36.02.4

Drawing Index

- LD100 - Cover Sheet Exterior Lighting
- LD101 - Site Plan Exterior Lighting
- LD102 - Level 6 Exterior Lighting
- LD103 - Level 15 Exterior Lighting

LD111 - Luminaire Schedule

- LD121 - Luminaire Cutsheet 1
- LD122 - Luminaire Cutsheet 2
- LD123 - Luminaire Cutsheet 3



100 Sunbridge Ln,
Buffalo Grove (Chicago), IL 60089,
Ph1: +1 312 994 2374,
mail@lightingergonomics.com



PRELIMINARY
NOT FOR CONSTRUCTION

929 East Washington Avenue
Hotel

929 E. Washington Ave.
Madison, WI

2016.36.02.4

DATE	ISSUANCE/REVISIONS
11/27/2023	LAND USE SUBMITTAL

COVER SHEET
EXTERIOR LIGHTING

LD100

	LIGHTING LEGEND						
GENERAL NOTES	<div style="display: flex; justify-content: space-between;"> <div style="width: 45%;"> <p>TYPE</p> <p>CONTROL</p> <p>POWER IN:</p> <ul style="list-style-type: none"> • HOLLOW CIRCLE - NORMAL POWER • SOLID CIRCLE - EMERGENCY POWER • LOCATION OF CIRCLE INDICATES SUGGESTED POWER ENTRY FEED TO THE LUMINAIRE </div> <div style="width: 50%;"> <p>SUGGESTED SUSPENSION POINT</p> <p>CIRCUIT/SWITCH, OR LOW-VOLTAGE RELAY/ZONE DIMMING ZONE</p> </div> </div> <table border="1" style="width: 100%; border-collapse: collapse;"> <thead> <tr> <th colspan="2">LUMINAIRE TYPE</th> </tr> <tr> <th>TYPE</th> <th>DESCRIPTION</th> </tr> </thead> <tbody> <tr> <td>L</td> <td>LUMINAIRE</td> </tr> </tbody> </table> <ul style="list-style-type: none"> RECESSED LINEAR LED PROFILE MOUNTING LOCATION: FLOOR LINEAR LED PROFILE MOUNTING LOCATION: HANDRAIL AND FURNITURE INTEGRATED WALL SURFACE MOUNTING LOCATION: WALL BOLLARD MOUNTING LOCATION: FLOOR RECESSED STEP LIGHT MOUNTING LOCATION: WALL SURFACE MOUNT LIGHT FIXTURE MOUNTING LOCATION: CEILING RECESSED DOWNLIGHT MOUNTING LOCATION: FLOOR POLE LIGHT WITH HEADS MOUNTING LOCATION: FLOOR DECORATIVE SUSPENDED FIXTURE MOUNTING LOCATION: CEILING 	LUMINAIRE TYPE		TYPE	DESCRIPTION	L	LUMINAIRE
LUMINAIRE TYPE							
TYPE	DESCRIPTION						
L	LUMINAIRE						
OTHER SYMBOLS							
NOTE DESIGNATION CONTROL NOTE							

1. ALL THE SHEETS IN THIS DESIGN DEVELOPMENT MANUAL, UNLESS OTHERWISE MENTIONED, TO BE PLOTTED TO 24" X 34" SHEET
2. REFER TO LIGHTING LEGEND ON THE SIDE FOR THE FIXTURE SYMBOL & ABBREVIATION INFORMATION.
3. REFER TO SHEET LD111 FOR LUMINAIRE SCHEDULE
4. ALL DIMENSIONS ARE IN INCHES & FOOT UNLESS OTHERWISE SPECIFIED.
5. ONLY WRITTEN DIMENSIONS ARE TO BE FOLLOWED, DO NOT SCALE THE DRAWING.
6. ALL THE REFERENCED HEIGHTS ARE FROM FINISHED FLOOR TO THE BOTTOM OF THE LUMINAIRE, UNLESS OTHERWISE NOTED.
7. FOR ALL THE LINEAR LUMINAIRES, EXACT LENGTH TO BE DERIVED FROM THE ARCHITECTURAL CONDITIONS WITHIN WHICH THEY ARE INSTALLED.
8. PROVISIONS FOR THE REMOTE DRIVER SHALL BE MADE IN THE NEAREST ACCESSIBLE LOCATION FOR EASY MAINTENANCE. DISTANCE OF THE DRIVER FROM THE LUMINAIRE SHALL BE MAINTAINED AS PER MANUFACTURER'S RECOMMENDATIONS
9. RELEVANT SERVICES DRAWINGS ARE TO BE READ SIMULTANEOUSLY AND PROVISION OF CUTOUTS / SLEEVES TO BE PROVIDED AS REQUIRED.
10. ALL MANUFACTURERS CONTAINED WITHIN THIS MANUAL ARE PRESENTED TO DEFINE DESIGN DIRECTION AND PERFORMANCE, ALL FINAL SELECTIONS OF MANUFACTURERS SHALL BE AS SPECIFIED OR EQUAL.

PRELIMINARY
NOT FOR CONSTRUCTION

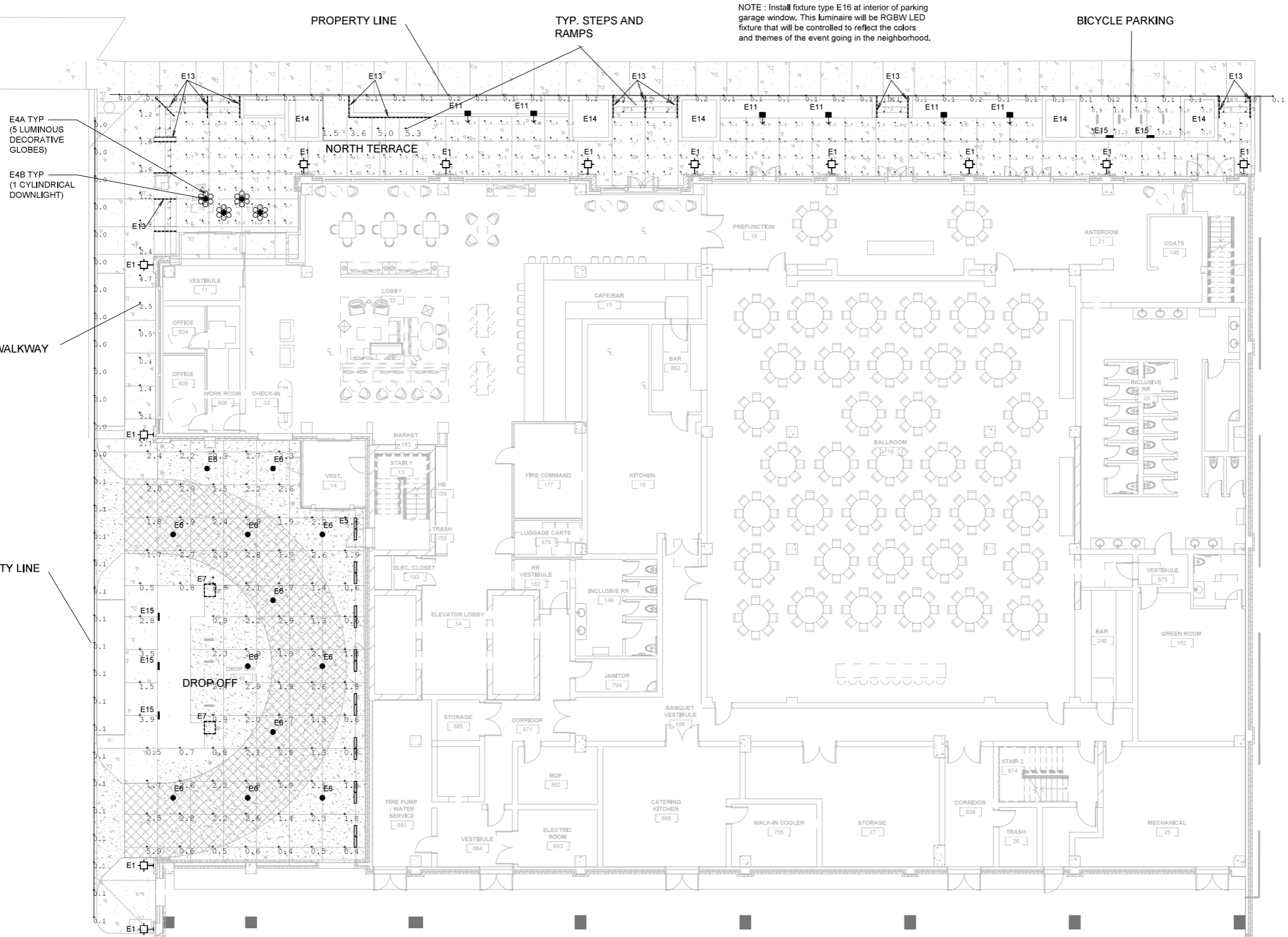
929 East Washington Avenue
Hotel

929 E. Washington Ave.
Madison, WI

2016.36.02.4

DATE	ISSUANCE/REVISIONS
11/27/2023	LAND USE SUBMITTAL

NOTE: Install fixture type E16 at interior of parking garage window. This luminaire will be RGBW LED fixture that will be controlled to reflect the colors and themes of the event going in the neighborhood.



ILLUMINATION LEVELS

SPACE	AVG.	MIN.	UNIFORMITY [AVG/MIN]
NORTH SIDE TERRACE	2.66	0.5	5.32
TYP. STEPS AND RAMPS	2.99	0.6	4.98
WEST WALKWAY	2.09	0.4	5.23
DROP OFF	1.83	0.4	4.58
BICYCLE PARKING	3.83	0.6	6.38
PROPERTY LINE [Grid line 4' above grade]	0.2 [MAX]		

PRELIMINARY
NOT FOR CONSTRUCTION

929 East Washington Avenue
Hotel

929 E. Washington Ave.
Madison, WI

2016.36.02.4

DATE	ISSUANCE/REVISIONS
11/27/2023	LAND USE SUBMITTAL

ILLUMINATION LEVELS

CIRCULATION AREAS

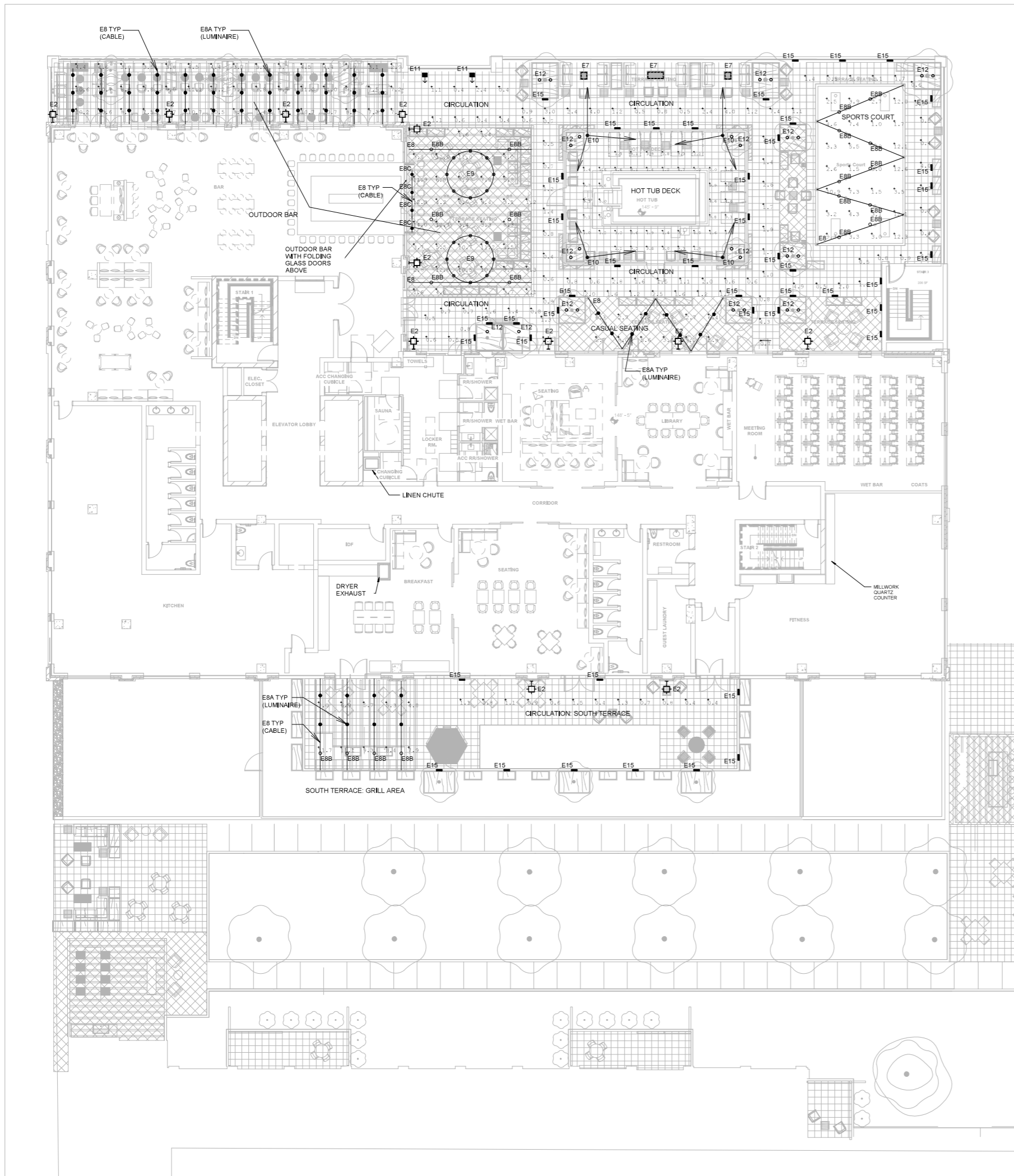
SPACE	AVG.	MIN.	UNIFORMITY [AVG/MIN]
NORTH TERRACE : CIRCULATION:	1.51	0.4	3.78
SOUTH TERRACE : CIRCULATION:	0.83	0.4	2.08

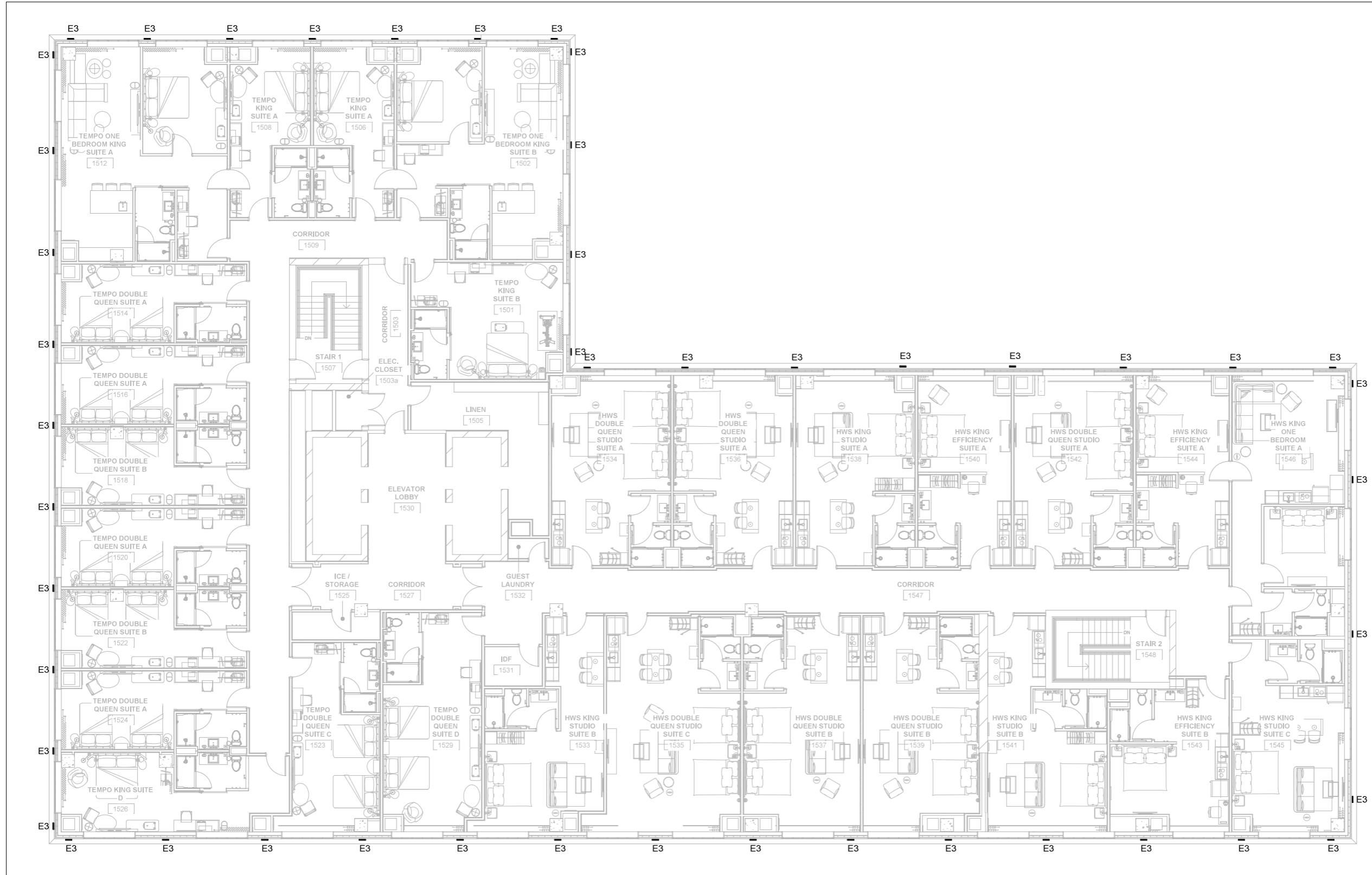
ACTIVITY AREAS

SPACE	AVG.	MIN.	UNIFORMITY [AVG/MIN]
NORTH TERRACE : OUTDOOR BAR	7.29	1.2	6.08
NORTH TERRACE : CASUAL SEATING	5.58	2.7	2.07
NORTH TERRACE : HOT TUB DECK	5.04	1	5.04
NORTH TERRACE : SPORTS COURT	5.46	1	5.56
SOUTH TERRACE : GRILL AREA	7.81	4.8	1.63

LEVEL 6 PLAN
EXTERIOR LIGHTING

LD102





PRELIMINARY
NOT FOR CONSTRUCTION

929 East Washington Avenue
Hotel

929 E. Washington Ave.
Madison, WI

2016.36.02.4

DATE	ISSUANCE/REVISIONS
11/27/2023	LAND USE SUBMITTAL

LEVEL 15 PLAN
EXTERIOR LIGHTING
LD103

LAND USE SUBMITTAL: EXTERIOR LUMINAIRE SCHEDULE

LUMINAIRE TYPE	LOCATION ON THE PROJECT	PROPOSED LUMINAIRE IMAGE	REFERENCE LUMINAIRE DESCRIPTION AND MANUFACTURER SPECIFICATION	DELIVERED LUMENS (LM)	WATTAGE (W)	LIGHTING CONTROL	MOUNTING HEIGHT & LAMP SHIELDING NOTE	REMARKS	QUANTITY ON PROJECT
E1	Exterior Wall Fixture (in stone level)		4'W x 4'1/2" x 40'V Linear Wall Fixture which Directs All Luminaire Flux Behind the Front Face of the Fixture Wall on to the wall surface surrounding it.	1300 Lum Total - 750 Lum Directed to the Wall Surface in both sides of Fixture with zero Direct View of the Light Source	18 W	ON/OFF	Wall Mount Features at 6'0" Above Grade to Bottom of Fixture	Refer to Lighting Plans for Approximate Locations	10
E2	4th Floor Reception Space Wall Screen		8'W x 4'1/2" x 20'V Janelux Showning Studio Designer via Radiantec Hardware. Twin Glass Recessed Fixtures with Laminated Backings and Grover Poles and Crystal Glass Optical Lens and Screen 2700.	400 Lum	5 W	ON/OFF	Wall Mount Features at 5'7" to Bottom of Fixture from Finished Back Surface	Refer to Lighting Plans for Approximate Locations	12
E3	Single Exterior Upper Beam Column Up-light Accent		12" x 3" x 11' Extended Aluminum Column with Black Anodized 200 Series Anodized Beam (pinned with weight accessories and front surface glass)	400 Lum	3 W	ON/OFF	Mount Fixture at the Base of Each Column Aimed Upwards Narrow grater optics will confine the light close to the building surface and within the roof over hand. Front baffle plate will ensure zero light trespass.	Refer to Lighting Plans for Approximate Locations on all Sides of Building Top	48
E4&B	Ground Floor Main Entrance (Recessed) Ceiling (Recessed)		Custom lighting fixture TBD by Architect (LED) Innovative light fixture with tubular glass lens and full cut-off housing that has the functional illumination of the lens. Each suspended arm will hold five E4A globes and one E4B downlight	12k Individual Truss not to Exceed 10'0" @ 200 Lbs 2k @ 10'0" @ 200 Lbs 12k @ 110' @ 110' Lbs	200 W 200 W 110 W	ON/OFF	Ceiling Suspended at 12'0" Above Grade to Bottom of Fixture	Refer to Lighting Plans for Approximate Locations	4
E5	Recessed In-Glass Linear Downlight (in-Light) in Side of Main Entrance Stone Colonnade		3'0" W x 3'7" x 3" Extruded Aluminum Recessed LED Linear Downlight for long life light output. Made in-glass (MIG) Series. 5000 K, 120-180-120-DIM-AS-60-4P	1833 Lum/ft	4 W/ft	0-10 V Dimming	Linear Recessed Fixture 2" from Target Wall for Full Illumination. Note that this installation is under the building structure.	Refer to Landscape and Lighting Plans for Approximate Locations	17
E6	Ceiling Sculptural Lighting at Main Entrance Stone Colonnade		Ceiling Fixture TBD. Luminaire Direct to Glass Colonnade. Luminaire will be a full cut-off downlight.	700 Lum	11.6 W	0-10 V Dimming	Ceiling Mounted		--
E7	Landscape Linear Recessed Ambient Downlight		16" W x 17" Diameter with Extruded Aluminum Housing and Lens (in-glass) MIG Series. 5000 K, 120-180-120-DIM-AS-60-4P. 2.5 Watts per Linear Foot. 120 Lum per Foot. A400K. Photogenic. Channel Series. 16-LED 7-2W-120-240-42-W	176 Lum/ft	3.5 W/ft	ON/OFF	Luminaire will be concealed mounted in the furniture and aimed downwards to ensure zero trespass. Remote Mounted Transformers are Required to Power These Low Voltage Light Sources	Refer to Landscape and Lighting Plans for Approximate Lengths and Locations	12 - Runs of Various Lengths
E8	4th Floor Reception Area (in-Glass) Cable System		Black Skyline Series. Double Cable Self Heating with Axial Coat and Core in Black Finish in Lengths Indicated on Lighting Plans. Cable system for fixtures E8A, E8B and E8C.	N/A	Dependent upon Quantity of Fixture on Each Run	N/A	Electrical Contractor to Provide Remote Power Supplies within Building for a Complete Installation. Where Poles are Required for Cable Suspension, Provide 4" Diameter x 12' Non-Exposed Round Pole with Paint Preference by Architect.	Refer to Landscape and Lighting Plans for Approximate Locations	89-29 Runs of Various Lengths
E8A, E8B and E8C	4th Floor Reception Area (in-Glass) Cable System		Black Skyline Series. Luminaires for Cable system E8A consist of 1'0" x 1'0" Dia. Tube with E8B (Zero Opatic) downlight. E8A and E8C downlights have frosted decorative glass in clear structure.	Type B - Standard diameter 1" x 1" @ 180 Lum. Type C - Standard diameter 1" x 1" @ 180 Lum. Manufacturer to custom modify the luminaire output to 400 lumens. For type B & C actual lumens are limited up to 100% by manufacturer's Optical Glass Globe	13 W (per luminaire) 13 W (per luminaire)	0-10 V Dimming	Ceiling Suspended at 9'0" Above Grade to Bottom of Fixture Type E8B is a downlight with a full cut-off optics. Type E8A and E8C has decorative element at the aperture which is anticipated to deliver less than 500 lumens with standard fixture and much less with the modified luminaire.	Refer to Landscape and Lighting Plans for Approximate Locations	E8A - 56 E8B - 16 E8C - 4
E9	4th Floor Exterior AMANUS (Spande) "Head-Up" Beams		Black Skyline Series. Cluster of pendant luminaires, designed for use on type E8A but suspended where the luminaire must be suspended to clear the ceiling structure.	Standard downlight @ 180 Lum. Manufacturer to custom modify the luminaire output to 400 lumens. Actual lumens is limited up to 100% by manufacturer's Optical Glass Globe	13 W (per luminaire)	0-10 V Dimming	Actual body of the luminaire is a downlight with a full cut-off optics. Decorative element at the aperture which is anticipated to deliver less than 500 lumens with standard fixture and much less with the modified luminaire.	Refer to Landscape and Lighting Plans for Approximate Locations	2 x 9
E10	6th Floor Terrace Pool Area		13" High x 4" Diameter Three-Head Pole light with (3) 1-1/2" Square x 3-1/4" W Fixtures with Low Glare Optical Lens and Glass Control Lenses and Aluminum Screen - Inconspicuous Series: S553M QW-14 with 12 x 42 Degree Physical Beam (continues with Gray Finish (Custom BA), Color Available) 3000K	3 x 900 Lum	3 x 48 W	0-10 V Dimming	Tight focus optics and glare control accessories will ensure zero trespass. Coordinate Exact Location with Landscape Architect and Concrete Base Installer.	Refer to Landscape and Lighting Plans for Approximate Locations	4
E11	Low level landscape fixture within Plaza for Ground Cover Accent		22 7/8" W x 11 1/8" H x 3 1/8" D Single Lens Landscape Fixture with 8500K French 3000K Systematic LOC Series 77751-22251-18-UPW-20-ND	398 Lum	19.4 W	ON/OFF	Also Available with Wood	Refer to Landscape and Lighting Plans for Approximate Locations	4
E12	Landscape Free Fix Light		3' Diameter Free Fix Business Seed Receptor in Glass Spherical. 42 Degree Comfort Luminous Up Light. Receptor Light to 6.8' Series. A400K. MD-813-861	832 Lum (90% Maintenance Factor)	6.5 W	ON/OFF	Provide In-Grade Polycarbonate Mounting Housing for Each Use	Refer to Landscape and Lighting Plans for Approximate Locations	26
E13	Landscape Exterior Headlight Integral Lighting		Exterior Linear LED Module Luminaires: 8A (LM71), 8A (BL, 3000K, CCT, IR reject) Complete Lighting Number: L103, 200 All LED MA + Luminaire Driver as Required. 120 Degree Beam in Center, 70 Degree at Sides	288 Lum per 1' Section	3 W/ft	ON/OFF	Refer to Landscape and Architectural Plans and Specifications for Complete System. Only lighting Equipment and General Electrical Information is Provided with this Lighting Document.	Refer to Landscape and Lighting Plans for Approximate Lengths and Locations	18 Locations of Various Type and Length
E14	Landscape Electrical Outer Protection for Landscape Free Fixing/Net Lighting		Mounting at Each Support Point for future installation. Compliant with Free Fixing Light Circuit	N/A	20 Amp Breaker	ON/OFF	Refer to Landscape Plans for All Landscape and Lighting Plans for Approximate Locations	Refer to Landscape and Lighting Plans for Approximate Locations	14
E15	Landscape Recessed Wall Receptor Fix Light		2.57" W x 11.97" H x 2.20" D Linear Spotlight with lower and luminaire. Gray Finish 3000K. Temp: 2000K. Shaded View. 21-43-FW-SD-1-30 with 10447 (location/height)	1100 Lum	6 W	ON/OFF	Mounting Height @ 11" Above Finished floor	Refer to Landscape and Lighting Plans for Approximate Locations	45
E16	Interior of Parking Garage Window		Recessed LED Recessed LED luminaire to illuminate the interior of the Parking Garage Window from inside.	760 Lum	760 W	Dim Control	Luminaire will be concealed mounted in the interior space, aimed downwards to illuminate the frosted material of the window glazing	Refer to Landscape and Lighting Plans for Approximate Locations	4

PRELIMINARY
NOT FOR CONSTRUCTION

929 East Washington Avenue
Hotel

929 E. Washington Ave.
Madison, WI

2016.36.02.4

DATE	ISSUANCE/REVISIONS
11/27/2023	LAND USE SUBMITTAL

E12

Light Up Orbit



091-07
iCuzzini

Project: _____
Page: 1 of 11

DESCRIPTION
Collection of compact exterior luminaires for architectural lighting. Rugged stainless steel construction, with tempered glass lens, these luminaires are designed to perform in extreme conditions. This series is available in 3 sizes, that can be installed for all in-ground application. Complete range of optic distributions for accent lighting, effects lighting and markers.

Luminaire characteristics:	Power input: 1W to 5.5W (future voltage) Lumens: 7lm to 54lm (for 3000K, 60CRI) Luminaire efficacy: Up to 100lm/W
Source:	LUXEON LED module (LM-80) 2700K: 80CRI, 3000K: 80CRI, 3500K: 80CRI, 4000K: 60CRI ILLF28: 90% of initial lumens at 100 000 hours (L90) ILLF50: 80% of initial lumens at 89 000 hours (L80) ILLF80: 80% of initial lumens at 89 000 hours (L80)
Lumen maintenance:	
Optics:	Spot, medium, flood, wide flood with Opti Beam technology (comfort versions delivered with an integrated hex cell louver). Wall washer, diffuse, elliptical or light table.
Material:	Body and frame - AISI 304 stainless steel Optic lens - 6 to 8 mm extra clear or opti beam calcium tempered glass. Optics: PMMA lens or PE film for diffuse optic, clear, black or metalized polycarbonate reflector
Mounting:	Ground recessed installation using polypropylene back box with AISI 304 stainless steel ring (to be ordered separately). Supplied with 6m (1.9m) long outdoor rated power cable. 12" of gravel is required below the luminaire to allow proper drainage.
Electrical:	High efficiency LED driver, rated at 50 000 hours. See remote LED driver options on page 3-9.
Finish:	Stainless steel, gold/brass, bronze and burnished chrome.
Weight:	ILLF28: 0.42lb (0.19kg) ILLF50: 1.20lb (0.55kg) ILLF80: 3.10lb (1.43kg)
Load capacity:	4 400N (2 000kg)
Glass surface temperature:	104°F (40°C)
Operating temperature:	ILLF28: -13 to 95°F (-25 to 35°C) ILLF50: -13 to 122°F (-25 to 50°C) ILLF80: -4 to 95°F (-20 to 35°C)
Warranty:	5 year limited warranty.
Ratings:	ILLF28: IK09, IP66, IP68* ILLF50: IK07, IP66, IP68* ILLF80: IK09, IP66, IP68* <small>*Complete immersion for 10 minutes, not suitable for use in swimming pools or fountains.</small>
Certification:	UL Listed CULUS listed for wet location.

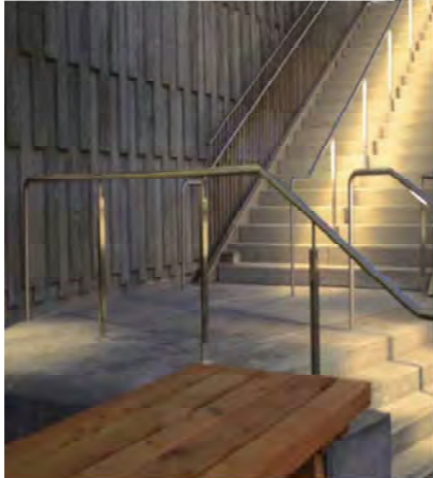
Due to continuous improvements, the information herein may be changed without notice.
3300 Dux St. Laurent, Que. H4S 1W6 (Canada) Canada (514) 947-9100 F. 514-525-6107 www.icuzzini.com

E13

LUMENLINEAR™ SYMMETRIC

ANOTHER LUMENLINEAR™ COMPONENT FOR LIFE SAFETY AND LIGHT.

Or linear product is a state-of-the-art, low-voltage LED light fixture that provides exceptional lighting performance to enhance any stairway, ramp or walkway application. Its soft light provides ample illumination for safety and ambience without the glare or harshness of overhead lighting. Available with warm, neutral or cool white color temperatures, and a range of solid color options for static hues. Standard, mid and high output offerings make Lumenlinear a highly flexible and practical solution for adding beauty and light to your life safety installations.



- Industry leading output.
- 60° and 120° symmetric beam spreads
- Matte and transparent lens options
- Available in:
 - 152, 284 or 413 lpf (4000 "K Values)
- IES full cutoff classification when installed in Wagner Architectural Systems hand rail
- Fully gasketed, extruded aluminum housing
- ETL wet location listed, UL1598 certified
- 5 year warranty
- Cast 316 stainless steel, mechanical mounting
- CCT standard in 5 white options
- 4 solid color options including wildlife amber
- Up to 88 CRI standard, 95+ available upon request
- 14 standard lengths from 6" to 80"

WAGNER
ARCHITECTURAL SYSTEMS

Specifications may change without notice. Always refer to the latest product manual for the most current information.

E14



Low Profile Enclosure **GARD-N-POST**
WITH EXTRA DUTY WEATHERPROOF IN USE COVER

Features for EXTRA-DUTY Code Compliance:

- Ships with a clear extra-duty weatherproof in-use cover. GPO and dialer wall plate - no gasket required.
- Four permanent, damage-resistant corners
- Made of heavy-duty, UV-rated plastic
- 19.5" tall
- UL Listed enclosure - Meets 2014 NEC extra-duty code requirements

Look Great OUTDOORS!

CPD19	CPD19	CPD19	CPD19	CPD19	CPD19
152 LPF	284 LPF	413 LPF	152 LPF	284 LPF	413 LPF
152 LPF	284 LPF	413 LPF	152 LPF	284 LPF	413 LPF

Arlington

Potter Lawson

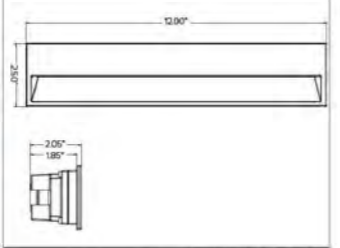
Success by Design

ERGO
LIGHTING ERGONOMICS

E15

ZEDGE LINE

Recessed Direct View Linear Line Voltage Steplight



CONCEPT	Recessed LED lighting for interior and exterior applications. Designed in collaboration with Genie as Product Design Consultant.																									
MECHANICAL CHARACTERISTICS	<p>Housing: 2.50" x 4.00" W x 2.25" D</p> <p>Materials: Die-cast anodized aluminum body and external powder coated finish.</p> <p>Finish: Satin/brushed metal.</p> <p>● Frosted Glass Grey ● Heritage Brown ● Bronze ● Black ● White ● Seabone Grey</p> <p>Power Connection: Pre-wired with 6" lead for direct line voltage and dimming connection.</p> <p>Mounting: To be completed with installation back bar for flush or semi flush installations.</p> <p>BJG: ED-LED-03</p> <p>Weight: 1.54lbs</p> <p>Protection: IP66</p> <p>Impact: IK10</p>																									
ELECTRICAL CHARACTERISTICS	<p>Power Supply: Integrated 41 Watt driver (Non-dimmable / 0-10V / Reverse Polarity / Forward Phase / Dimmable to 10% via 0-10V or 4-20V via Triac).</p> <p>Voltage: 3W</p> <p>Voltage: Line Voltage (120-277V AC 50/60Hz)</p> <p>Operating Temp.: -20°C to 35°C</p>																									
SOURCE	LED High Efficiency Board																									
TABO	<table border="1"> <tr> <th>CCT (Nominal)</th> <th>CRI</th> <th>R_f</th> <th>R_g</th> <th>SDCM</th> </tr> <tr> <td>2700K</td> <td>80</td> <td>83</td> <td>97.3</td> <td>2</td> </tr> <tr> <td>3000K</td> <td>80</td> <td>82.9</td> <td>97</td> <td>2</td> </tr> <tr> <td>3500K</td> <td>80</td> <td>83.6</td> <td>96.5</td> <td>2</td> </tr> <tr> <td>4000K</td> <td>80</td> <td>84</td> <td>95.7</td> <td>2</td> </tr> </table>	CCT (Nominal)	CRI	R _f	R _g	SDCM	2700K	80	83	97.3	2	3000K	80	82.9	97	2	3500K	80	83.6	96.5	2	4000K	80	84	95.7	2
CCT (Nominal)	CRI	R _f	R _g	SDCM																						
2700K	80	83	97.3	2																						
3000K	80	82.9	97	2																						
3500K	80	83.6	96.5	2																						
4000K	80	84	95.7	2																						
OPTIC	Polycarbonate optic lens for uniform optical distribution on the floor and ceiling; visual comfort.																									
Beam	38° x 45°																									
Delivered Lumens:	<table border="1"> <tr> <td>2700K</td> <td>230lm</td> </tr> <tr> <td>3000K</td> <td>242lm</td> </tr> <tr> <td>3500K</td> <td>251lm</td> </tr> <tr> <td>4000K</td> <td>257lm</td> </tr> </table>	2700K	230lm	3000K	242lm	3500K	251lm	4000K	257lm																	
2700K	230lm																									
3000K	242lm																									
3500K	251lm																									
4000K	257lm																									
Efficacy	38lm/W max. Refer to photometric graphs for specifications.																									
Lifetime	L90B10 30,000hrs at max TA +25°C L90B50 50,000hrs at max TA +25°C																									
Photobiological Classification	Low risk photobiological safety RGT																									

E16

insight lighting MEDLEY X

PROFILE

OUTPUT: 10.113W/FT | 140.91 W/FT | HD (55.0 W/FT)

OPTICS: 10" x 10" | 10" x 6.5" | 10" x 3" | 20" x 3" | 20" x 1.5" | 40" x 1.5" | 40" x 0.75" | 40" x 0.375" | 80" x 0.375" | 80" x 0.1875" | 80" x 0.09375"

CCT: 4000K, 3500K, 3000K, 2700K, 2200K, 1800K, 1500K, 1200K, 900K, 600K, 500K, 400K, 300K, 200K

VOLTAGE: LINEAR VOLTAGE (120-277V)

POWER: REACTIVE POWER SUPPLY

CONTROL: DIM FUTURE SYSTEM, 0-10V FT BY FT RESOLUTION

DIMENSIONS: 1.25" x 4.25"

HOUSING: EXTRUDED ALUMINUM HOUSING

LENS: TEMPERED GLASS

FINISH: HIGH DURABILITY POWDER COATING

WARRANTY: 3-YEAR LIMITED

OPERATING TEMP: -20°C TO 30°C (PLEASE CONTACT FACTORY FOR EXTREME TEMPERATURES)

LUMEN MAINTENANCE: 75,000 HOURS

CERTIFICATION: ETL AND IETL FOR WET LOCATION, CLASS 1, IP67

NITRO COLOR TECHNOLOGY

QUAD CLUSTER LED CONFIGURATION

PERFORMANCE SAMPLE

Wavelength (nm)	IR (mW)	UV-A (mW)	UV-B (mW)	UV-C (mW)
280-400	0.000	0.000	0.000	0.000
400-500	0.000	0.000	0.000	0.000
500-600	0.000	0.000	0.000	0.000
600-700	0.000	0.000	0.000	0.000
700-800	0.000	0.000	0.000	0.000
800-900	0.000	0.000	0.000	0.000
900-1000	0.000	0.000	0.000	0.000

Insight Lighting

PRELIMINARY
NOT FOR CONSTRUCTION

929 East Washington Avenue
Hotel

929 E. Washington Ave.
Madison, WI

2016.36.02.4

DATE	ISSUANCE/REVISIONS
11/27/2023	LAND USE SUBMITTAL

LUMINAIRE CUTSHEET 3

EXTERIOR LIGHTING

LD123