

CITY OF MADISON 2014 PARKING GARAGE MAINTENANCE MADISON, WISCONSIN CITY OF MADISON CONTRACT NO. 7283 BID DRAWINGS

JSD Professional Services, Inc.
• Engineers • Surveyors • Planners


"BUILDING RELATIONSHIPS WITH A COMMITMENT TO CLIENT SATISFACTION THROUGH TRUST, QUALITY AND EXPERIENCE."

- CIVIL ENGINEERING
- SURVEYING & MAPPING
- CONSTRUCTION SERVICES
- WATER RESOURCES
- PLANNING & DEVELOPMENT
- TRANSPORTATION ENGINEERING
- STRUCTURAL ENGINEERING
- LANDSCAPE ARCHITECTURE

MADISON REGIONAL OFFICE
161 HORIZON DRIVE, SUITE 101
VERONA, WISCONSIN 53593
608.848.5060 PHONE | 608.848.2255 FAX

MADISON | MILWAUKEE
KENOSHA | APPLETON
www.jsdinc.com

SERVICES PROVIDED TO:
**CITY OF MADISON,
PARKING
UTILITY**



215 MARTIN LUTHER KING JR. BLVD
MADISON, WISCONSIN 53701-2986

PROJECT:
**2014 PARKING RAMP
RESTORATION**

PROJECT LOCATION:

JSD PROJECT NO.: 13-5576

SEAL/SIGNATURE:

ALTHOUGH EVERY EFFORT HAS BEEN MADE IN PREPARING THESE PLANS AND CHECKING THEM FOR ACCURACY, THE CONTRACTOR AND SUBCONTRACTORS MUST CHECK ALL DETAIL AND DIMENSIONS OF THEIR TRADE AND BE RESPONSIBLE FOR THE SAME.

DESIGN: JJE
DRAWN: PGB
APPROVED: JJE

PLAN MODIFICATIONS:	DATE:

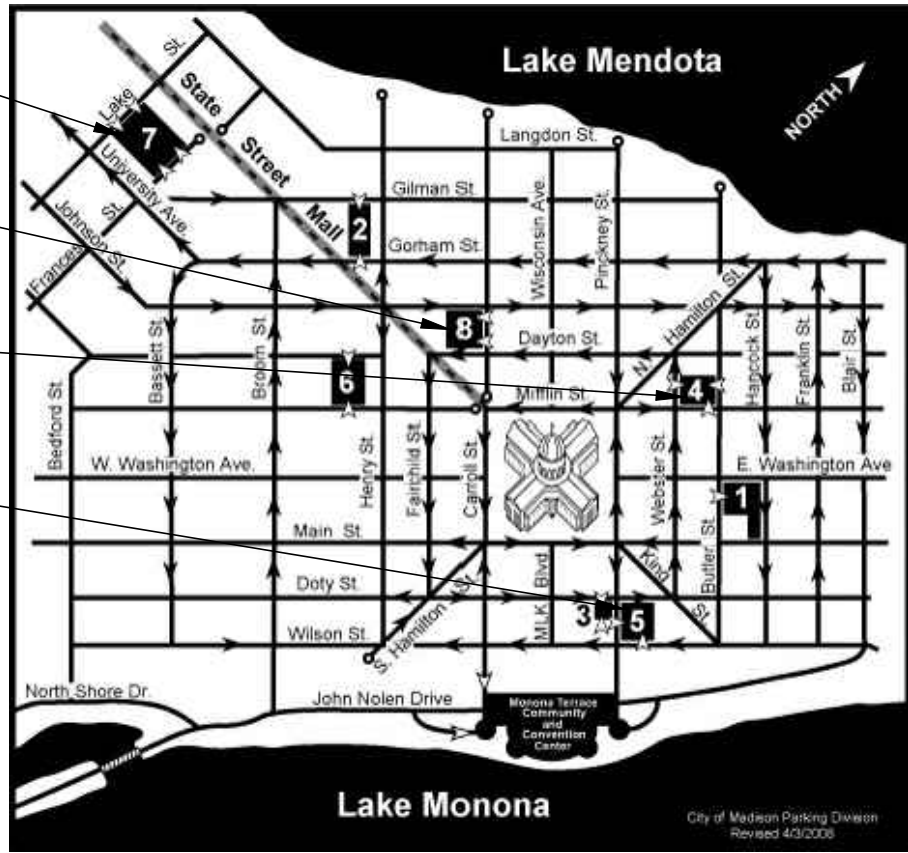
DIGGERS HOTLINE

Toll Free (800) 242-8511
Milwaukee Area (414) 259-1181
Hearing Impaired TDD (608) 542-2289
www.DiggersHotline.com


SHEET TITLE:
TITLE SHEET

SHEET NUMBER:
T1

- STATE STREET CAMPUS (LAKE) GARAGE
415 NORTH LAKE STREET
- STATE STREET CAPITOL GARAGE
214 NORTH CARROLL STREET
- CAPITOL SQUARE NORTH GARAGE
218 EAST MIFFLIN STREET
- GOVERNMENT EAST GARAGE
215 SOUTH PINCKNEY STREET



PARTIAL CITY OF MADISON LOCATION MAP



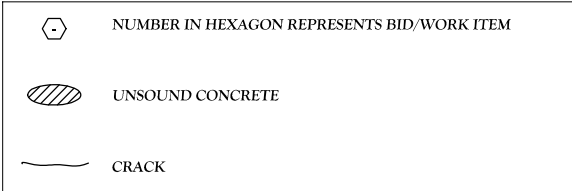
DRAWING INDEX

TITLE SHEET	T1
CAPITOL SQUARE NORTH GARAGE	CN1
STATE STREET CAPITOL GARAGE	SC1
STATE STREET CAMPUS (LAKE) GARAGE	SL1 THRU SL3
GOVERNMENT EAST GARAGE	GE1, GE2
DETAILS	D1, D2
STORM SEWER MODIFICATIONS (SC)	P000, P100D, P100, P101

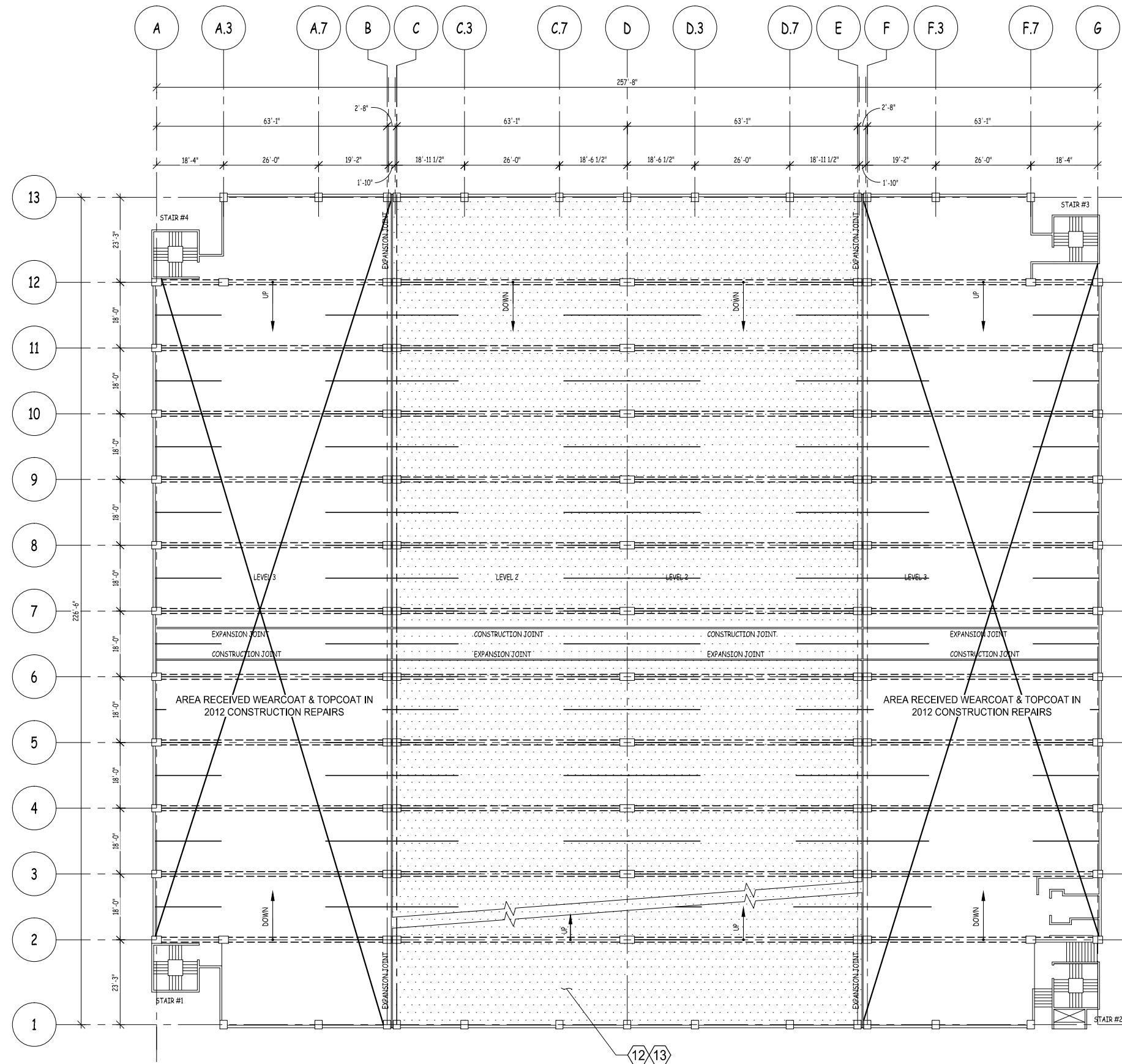
INFORMATION PERTAINING TO EXISTING CONDITIONS GIVEN ON THESE DRAWINGS REPRESENTS TO THE BEST OF OUR KNOWLEDGE THE ACTUAL EXISTING FIELD CONDITIONS. JSD, INC. MAKES NO WARRANTY AS TO THEIR ACCURACY. CONTRACTOR TO FIELD VERIFY EXISTING CONDITIONS IMPERATIVE TO THE NEW WORK. REPORT DISCREPANCIES BETWEEN DRAWINGS AND FIELD CONDITIONS TO THE ENGINEER FOR REVIEW. ANY WORK PERFORMED PRIOR TO RESOLUTION OF DISCREPANCIES BY THE ENGINEER IS SUBJECT TO REMOVAL AND REPLACEMENT AT NO ADDITIONAL COST TO THE CONTRACT.

CONTRACTORS ARE RESPONSIBLE FOR THE MEANS, METHODS, TECHNIQUES, SEQUENCES, AND PROCEDURES OF CONSTRUCTION INCLUDING, BUT NOT LIMITED TO TEMPORARY SUPPORTS, SHORING, AND FORMING TO SUPPORT IMPOSED LOADS AND OTHER SIMILAR ITEMS.

THE LOCATION OF DETERIORATED CONCRETE AND CRACKS SHOWN ARE FOR REFERENCE PURPOSES ONLY. DETERIORATED CONCRETE AND CRACKS TO BE REPAIRED WILL BE DESIGNATED BY THE ENGINEER AT THE TIME OF CONSTRUCTION.

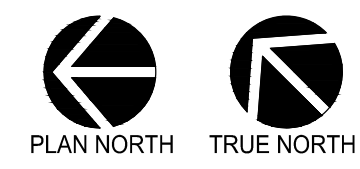
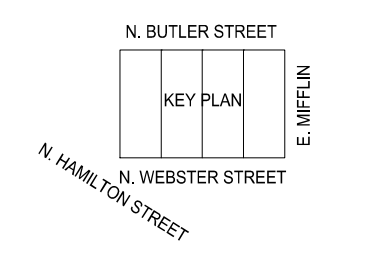


File: I:\2013\135576\Capital Square North\CSN Condition Evaluation\CSN 2013 - Evaluation.dwg Layout: CN1 User: gruedel Plotted: Feb 24, 2014 - 2:54pm Xref's:



1
CN1
LEVELS 2 AND 3 FLOOR PLAN
 SCALE : 1/32" = 1'-0"

- ### LEGEND
- AREA TO RECEIVE NEW MEMBRANE WEARCOAT & TOPCOAT. SELECTED AREAS WILL RECEIVE COMPLETE FULLY ADHERED MEMBRANE SYSTEM.
 - X REPAIR ITEM



JSD Professional Services, Inc.
 • Engineers • Surveyors • Planners

"BUILDING RELATIONSHIPS WITH A COMMITMENT TO CLIENT SATISFACTION THROUGH TRUST, QUALITY AND EXPERIENCE"

- CIVIL ENGINEERING
- SURVEYING & MAPPING
- CONSTRUCTION SERVICES
- WATER RESOURCES
- PLANNING & DEVELOPMENT
- TRANSPORTATION ENGINEERING
- STRUCTURAL ENGINEERING
- LANDSCAPE ARCHITECTURE

MADISON REGIONAL OFFICE
 161 HORIZON DRIVE, SUITE 101
 VERONA, WISCONSIN 53593
 608.848.5060 PHONE | 608.848.2255 FAX

MADISON | MILWAUKEE
 KENOSHA | APPLETON

www.jsdinc.com

SERVICES PROVIDED TO:

CITY OF MADISON, PARKING UTILITY

215 MARTIN LUTHER KING JR. BLVD
 MADISON, WISCONSIN 53701-2986

PROJECT:
2014 PARKING RAMP RESTORATION

PROJECT LOCATION:
 CAPITOL SQUARE NORTH

JSD PROJECT NO.: 13-5576

SEAL/SIGNATURE:

ALTHOUGH EVERY EFFORT HAS BEEN MADE IN PREPARING THESE PLANS AND CHECKING THEM FOR ACCURACY, THE CONTRACTOR AND SUBCONTRACTORS MUST CHECK ALL DETAIL AND DIMENSIONS OF THEIR TRADE AND BE RESPONSIBLE FOR THE SAME.

DESIGN: JJE
 DRAWN: PGB
 APPROVED: JJE

PLAN MODIFICATIONS:	DATE:

DIGGERS HOTLINE

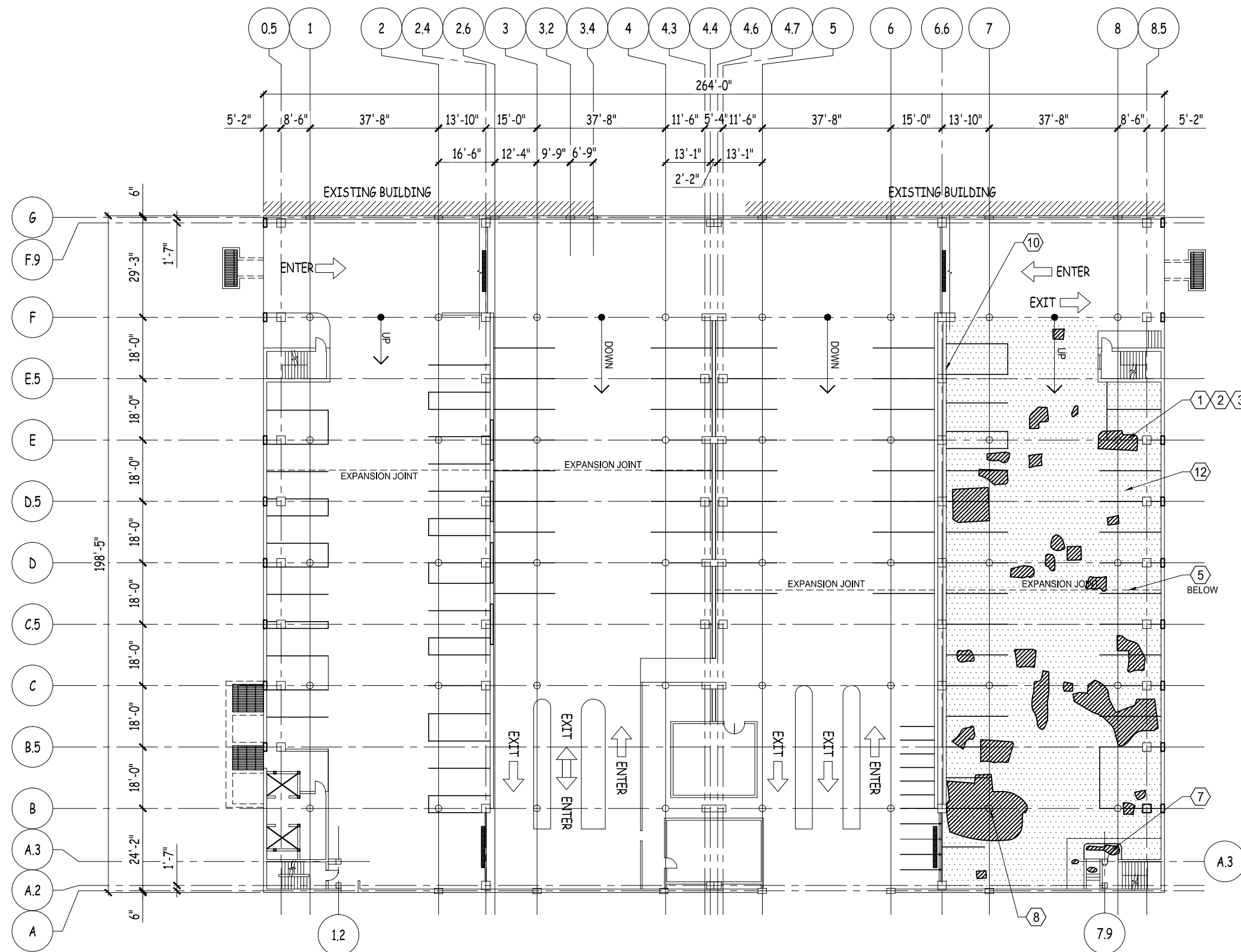
Toll Free (800) 242-8511
 Milwaukee Area (414) 258-1181
 Hearing Impaired TDD (800) 542-2289
www.DiggersHotline.com

SHEET TITLE:
LEVELS 2 AND 3 FLOOR PLAN

SHEET NUMBER:
CN1

THESE PLANS AND DESIGNS ARE COPYRIGHT PROTECTED AND MAY NOT BE USED IN WHOLE OR IN PART WITHOUT THE WRITTEN CONSENT OF JSD PROFESSIONAL SERVICES, INC.

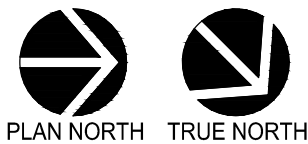
File: i:\2013\135576\State Street Capitol\SSCO Condition Evaluation\SSCO 2013 - Evaluation.dwg Layout: SC1 User: gruvdel Plotted: Feb 24, 2014 - 2:55pm xref's



1
SC1

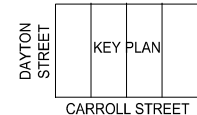
LEVEL 1 FLOOR PLAN

SCALE: 1/32" = 1'-0"



LEGEND

- CONCRETE DELAMINATION
- REPAIR ITEM
- FULL SYSTEM MEMBRANE REPLACEMENT



JSD Professional Services, Inc.
Engineers • Surveyors • Planners

"BUILDING RELATIONSHIPS WITH A COMMITMENT TO CLIENT SATISFACTION THROUGH TRUST, QUALITY AND EXPERIENCE"

- CIVIL ENGINEERING
- SURVEYING & MAPPING
- CONSTRUCTION SERVICES
- WATER RESOURCES
- PLANNING & DEVELOPMENT
- TRANSPORTATION ENGINEERING
- STRUCTURAL ENGINEERING
- LANDSCAPE ARCHITECTURE

MADISON REGIONAL OFFICE
161 HORIZON DRIVE, SUITE 101
VERONA, WISCONSIN 53593
608.848.5060 PHONE | 608.848.2255 FAX
MADISON | MILWAUKEE
KENOSHA | APPLETON
www.jsdinc.com

SERVICES PROVIDED TO:

CITY OF
MADISON,
PARKING
UTILITY



215 MARTIN LUTHER KING JR. BLVD
MADISON, WISCONSIN 53701-2986

PROJECT:
2014 PARKING RAMP
RESTORATION

PROJECT LOCATION:
STATE STREET CAPITOL

JSD PROJECT NO.: 13-5576

SEAL/SIGNATURE:

ALTHOUGH EVERY EFFORT HAS BEEN MADE IN PREPARING THESE PLANS AND CHECKING THEM FOR ACCURACY, THE CONTRACTOR AND SUBCONTRACTORS MUST CHECK ALL DETAIL AND DIMENSIONS OF THEIR TRADE AND BE RESPONSIBLE FOR THE SAME.

DESIGN: JJE
DRAWN: PGB
APPROVED: JJE

PLAN MODIFICATIONS: DATE:

DIGGERS HOTLINE

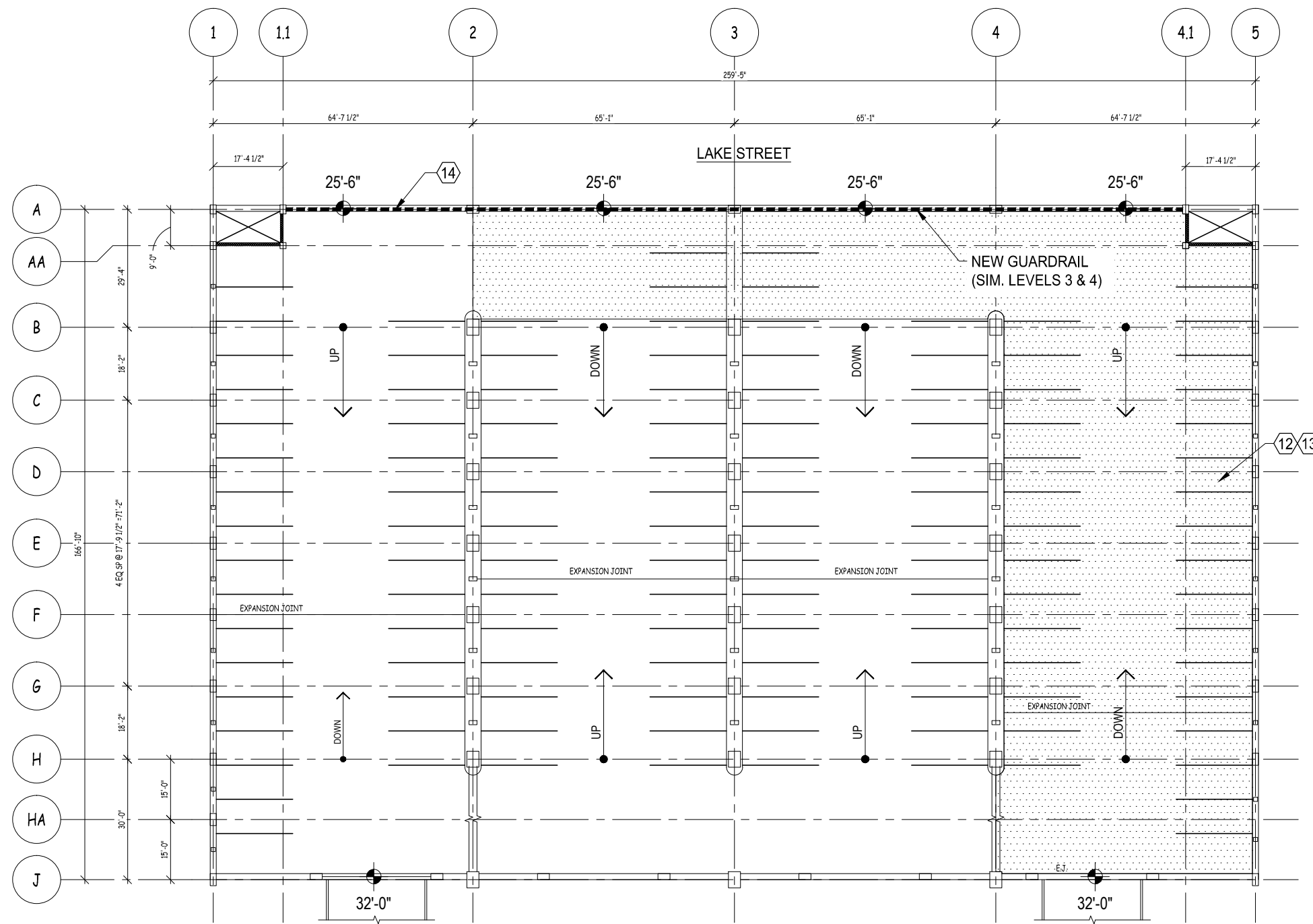
Toll Free (800) 242-8511
Milwaukee Area (414) 259-1181
Hearing Impaired TDD (800) 542-2289
www.DiggersHotline.com

SHEET TITLE:
FIRST LEVEL
TOPSIDE PLAN

SHEET NUMBER:
SC1

THESE PLANS AND DESIGNS ARE COPYRIGHT PROTECTED AND MAY NOT BE USED IN WHOLE OR IN PART WITHOUT THE WRITTEN CONSENT OF JSD PROFESSIONAL SERVICES, INC.

File: I:\2013\135576\State Street Campus Lake\SSCL Condition Evaluation\SSCL 2013 - Evaluation.dwg Layout: SL1_Restoration User: gruedel Plotted: Feb 24, 2014 - 2:56pm Xref's:



LEGEND

- AREA TO RECEIVE NEW MEMBRANE WEARCOAT & TOPCOAT. SELECTED AREAS WILL RECEIVE COMPLETE FULLY ADHERED MEMBRANE SYSTEM.
- REPAIR ITEM
- VEHICULAR BARRIER GUARDRAIL

JSD Professional Services, Inc.
 • Engineers • Surveyors • Planners

"BUILDING RELATIONSHIPS WITH A COMMITMENT TO CLIENT SATISFACTION THROUGH TRUST, QUALITY AND EXPERIENCE"

- CIVIL ENGINEERING
- SURVEYING & MAPPING
- CONSTRUCTION SERVICES
- WATER RESOURCES
- PLANNING & DEVELOPMENT
- TRANSPORTATION ENGINEERING
- STRUCTURAL ENGINEERING
- LANDSCAPE ARCHITECTURE

MADISON REGIONAL OFFICE
 161 HORIZON DRIVE, SUITE 101
 VERONA, WISCONSIN 53593
 608.848.5060 PHONE | 608.848.2255 FAX

MADISON | MILWAUKEE
 KENOSHA | APPLETON

www.jsdinc.com

SERVICES PROVIDED TO:

CITY OF MADISON, PARKING UTILITY

215 MARTIN LUTHER KING JR. BLVD
 MADISON, WISCONSIN 53701-2986

PROJECT:
2014 PARKING RAMP RESTORATION

PROJECT LOCATION:
 STATE STREET CAMPUS - LAKE

JSD PROJECT NO.: 13-5576

SEAL/SIGNATURE:

ALTHOUGH EVERY EFFORT HAS BEEN MADE IN PREPARING THESE PLANS AND CHECKING THEM FOR ACCURACY, THE CONTRACTOR AND SUBCONTRACTORS MUST CHECK ALL DETAIL AND DIMENSIONS OF THEIR TRADE AND BE RESPONSIBLE FOR THE SAME.

DESIGN: JJE
 DRAWN: PGB
 APPROVED: JJE

PLAN MODIFICATIONS:	DATE:

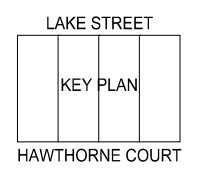
DIGGERS HOTLINE

Toll Free (800) 242-8511
 Milwaukee Area (414) 258-1181
 Hearing Impaired TDD (800) 542-2289
www.DiggersHotline.com

SHEET TITLE:
SECOND LEVEL TOPSIDE PLAN

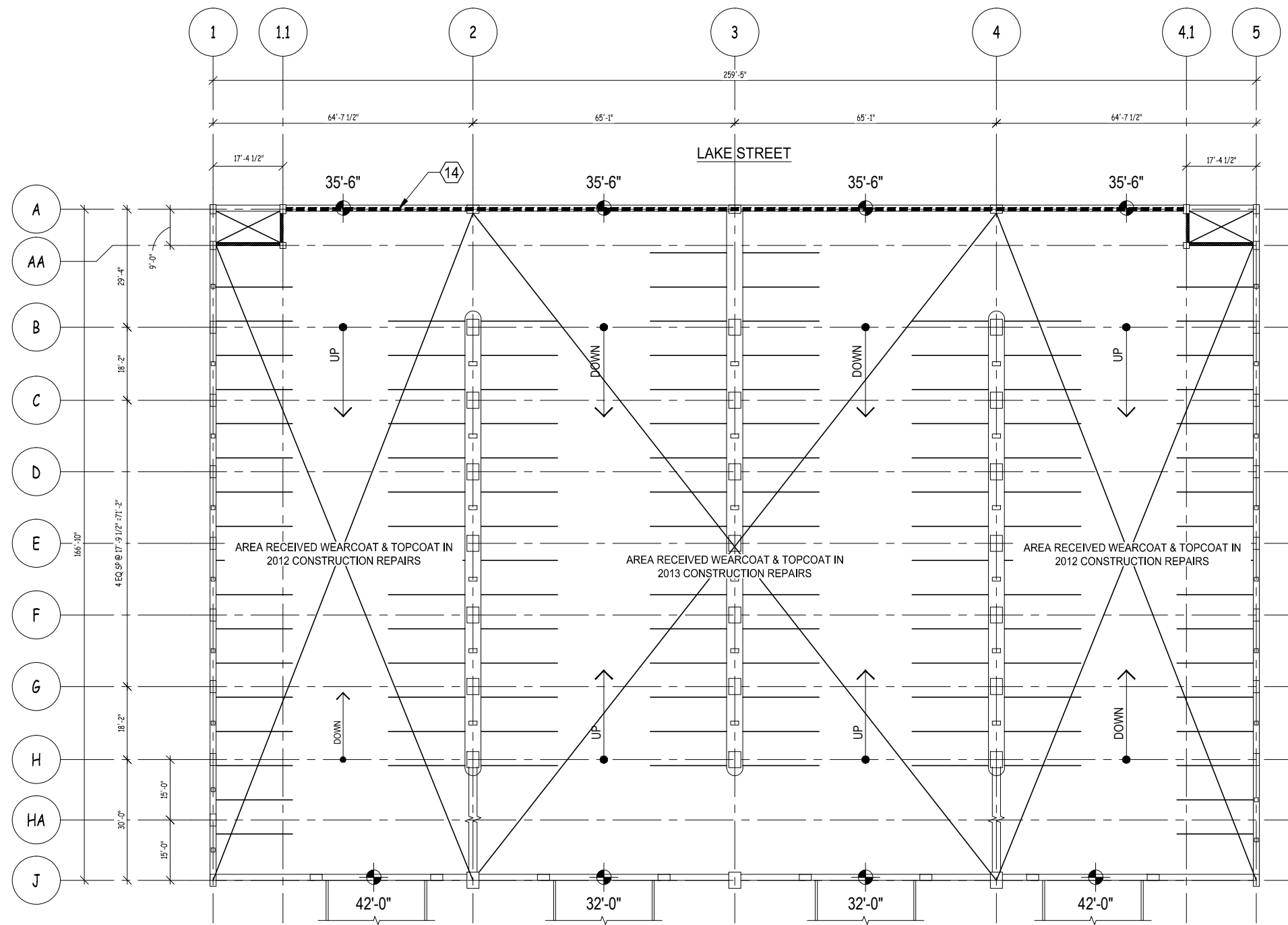
SHEET NUMBER:
SL1

1 SL1 LEVEL 2 TOPSIDE PLAN
 SCALE : 1/32" = 1'-0"



THESE PLANS AND DESIGNS ARE COPYRIGHT PROTECTED AND MAY NOT BE USED IN WHOLE OR IN PART WITHOUT THE WRITTEN CONSENT OF JSD PROFESSIONAL SERVICES, INC.

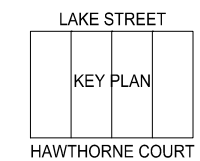
File: I:\2013\135576\State Street Campus Lake\SSCL Condition Evaluation\SSCL 2013 - Evaluation.dwg Layout: SL2_Restoration User: gruddell Plotted: Feb 24, 2014 - 2:57pm Xref's:



LEGEND

- VEHICULAR BARRIER GUARDRAIL
- (X) REPAIR ITEM

1
SL2
LEVEL 3 TOPSIDE PLAN
 SCALE : 1/32" = 1'-0"



"BUILDING RELATIONSHIPS WITH A COMMITMENT TO CLIENT SATISFACTION THROUGH TRUST, QUALITY AND EXPERIENCE"

- CIVIL ENGINEERING
- SURVEYING & MAPPING
- CONSTRUCTION SERVICES
- WATER RESOURCES
- PLANNING & DEVELOPMENT
- TRANSPORTATION ENGINEERING
- STRUCTURAL ENGINEERING
- LANDSCAPE ARCHITECTURE

MADISON REGIONAL OFFICE
 161 HORIZON DRIVE, SUITE 101
 VERONA, WISCONSIN 53593
 608.848.5060 PHONE | 608.848.2255 FAX
 MADISON | MILWAUKEE
 KENOSHA | APPLETON
 www.jsdinc.com

SERVICES PROVIDED TO:
CITY OF MADISON, PARKING UTILITY

 215 MARTIN LUTHER KING JR. BLVD
 MADISON, WISCONSIN 53701-2986

PROJECT:
2014 PARKING RAMP RESTORATION

PROJECT LOCATION:
 STATE STREET CAMPUS - LAKE

JSD PROJECT NO.: 13-5576

SEAL/SIGNATURE:

ALTHOUGH EVERY EFFORT HAS BEEN MADE IN PREPARING THESE PLANS AND CHECKING THEM FOR ACCURACY, THE CONTRACTOR AND SUBCONTRACTORS MUST CHECK ALL DETAIL AND DIMENSIONS OF THEIR TRADE AND BE RESPONSIBLE FOR THE SAME.

DESIGN: JJE
 DRAWN: PGB
 APPROVED: JJE

PLAN MODIFICATIONS:	DATE:

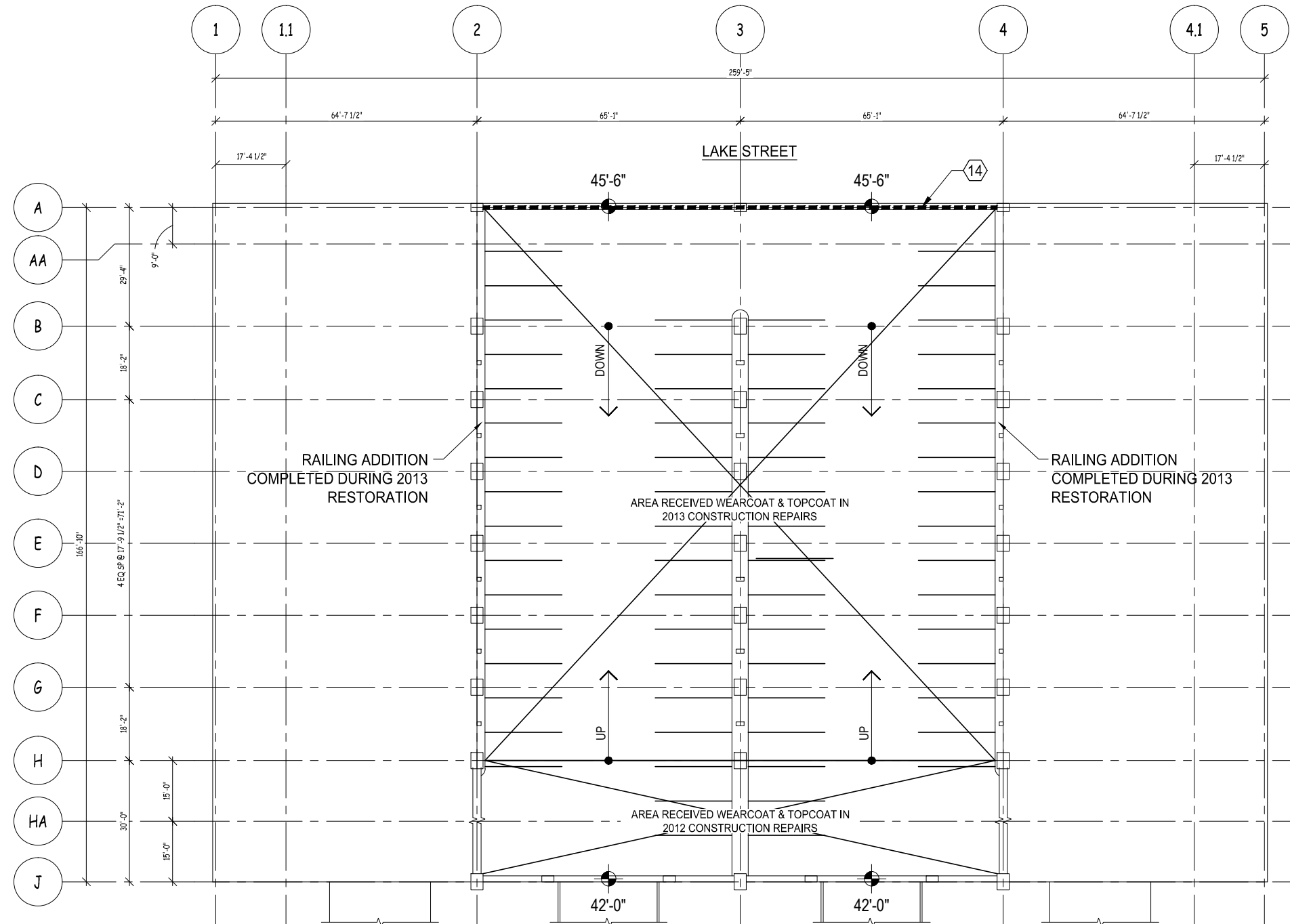
DIGGERS HOTLINE
 Tol Free (800) 242-8511
 Milwaukee Area (414) 258-1181
 Hearing Impaired TDD (800) 542-2289
 www.DiggersHotline.com

SHEET TITLE:
THIRD LEVEL TOPSIDE PLAN

SHEET NUMBER:
SL2

THESE PLANS AND DESIGNS ARE COPYRIGHT PROTECTED AND MAY NOT BE USED IN WHOLE OR IN PART WITHOUT THE WRITTEN CONSENT OF JSD PROFESSIONAL SERVICES, INC.

File: I:\2013\135576\State Street Campus Lake\SSCL Condition Evaluation\SSCL 2013 - Evaluation.dwg Layout: SL3_Restoration User: gruddell Plotted: Feb 24, 2014 - 2:57pm Xref's:



LEGEND

- VEHICULAR BARRIER GUARDRAIL
- (X) REPAIR ITEM

JSD Professional Services, Inc.
 • Engineers • Surveyors • Planners

"BUILDING RELATIONSHIPS WITH A COMMITMENT TO CLIENT SATISFACTION THROUGH TRUST, QUALITY AND EXPERIENCE"

- CIVIL ENGINEERING
- SURVEYING & MAPPING
- CONSTRUCTION SERVICES
- WATER RESOURCES
- PLANNING & DEVELOPMENT
- TRANSPORTATION ENGINEERING
- STRUCTURAL ENGINEERING
- LANDSCAPE ARCHITECTURE

MADISON REGIONAL OFFICE
 161 HORIZON DRIVE, SUITE 101
 VERONA, WISCONSIN 53593
 608.848.5060 PHONE | 608.848.2255 FAX

MADISON | MILWAUKEE
 KENOSHA | APPLETON
www.jsdinc.com

SERVICES PROVIDED TO:

CITY OF MADISON, PARKING UTILITY



215 MARTIN LUTHER KING JR. BLVD
 MADISON, WISCONSIN 53701-2986

PROJECT:
2014 PARKING RAMP RESTORATION

PROJECT LOCATION:
 STATE STREET CAMPUS - LAKE

JSD PROJECT NO.: 13-5576

SEAL/SIGNATURE:

ALTHOUGH EVERY EFFORT HAS BEEN MADE IN PREPARING THESE PLANS AND CHECKING THEM FOR ACCURACY, THE CONTRACTOR AND SUBCONTRACTORS MUST CHECK ALL DETAIL AND DIMENSIONS OF THEIR TRADE AND BE RESPONSIBLE FOR THE SAME.

DESIGN: JJE
 DRAWN: PGB
 APPROVED: JJE

PLAN MODIFICATIONS: DATE:



Toll Free (800) 242-8511
 Milwaukee Area (414) 258-1181
 Hearing Impaired TDD (800) 542-2289
www.DiggersHotline.com

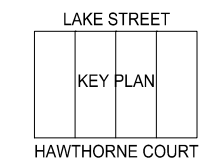
SHEET TITLE:
FORTH LEVEL TOPSIDE PLAN

SHEET NUMBER:
SL3

1
 SL3

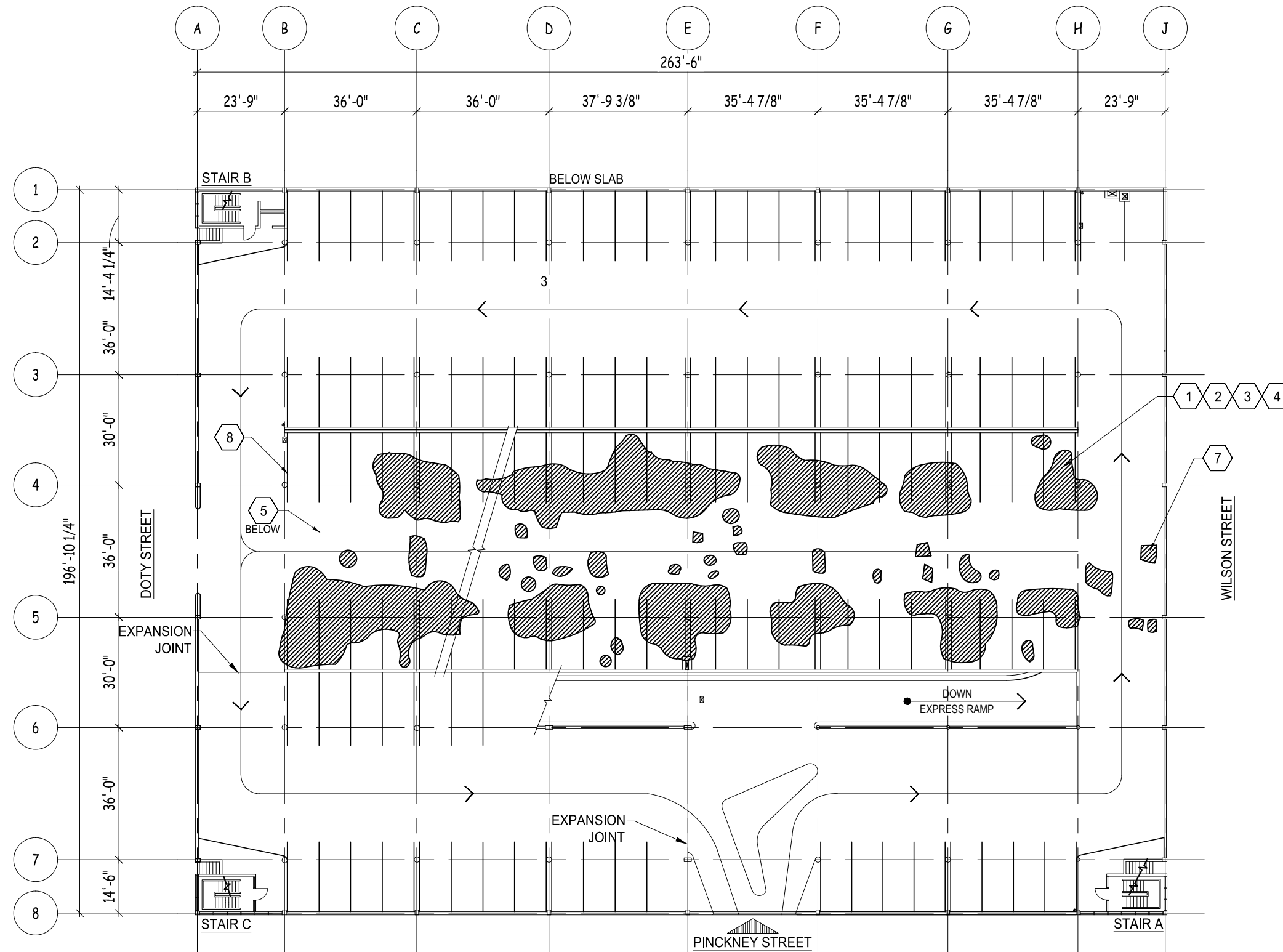
LEVEL 4 TOPSIDE PLAN

SCALE : 1/32" = 1'-0"



THESE PLANS AND DESIGNS ARE COPYRIGHT PROTECTED AND MAY NOT BE USED IN WHOLE OR IN PART WITHOUT THE WRITTEN CONSENT OF JSD PROFESSIONAL SERVICES, INC.

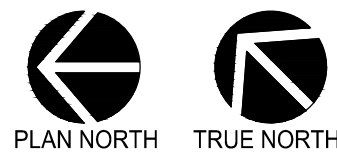
File: I:\2013\135576\Government_East\GE_Evaluation\GE_2013 - Evaluation.dwg Layout: GE1 User: graddell Plotted: Feb 24, 2014 - 2:59pm xref's



1
GE1

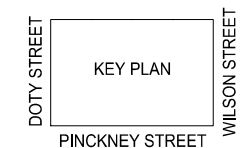
FIRST LEVEL TOPSIDE PLAN

SCALE : 1/32" = 1'-0"



LEGEND

- CONCRETE DELAMINATION
- REPAIR ITEM



JSD Professional Services, Inc.
 • Engineers • Surveyors • Planners

"BUILDING RELATIONSHIPS WITH A COMMITMENT TO CLIENT SATISFACTION THROUGH TRUST, QUALITY AND EXPERIENCE"

- CIVIL ENGINEERING
- SURVEYING & MAPPING
- CONSTRUCTION SERVICES
- WATER RESOURCES
- PLANNING & DEVELOPMENT
- TRANSPORTATION ENGINEERING
- STRUCTURAL ENGINEERING
- LANDSCAPE ARCHITECTURE

MADISON REGIONAL OFFICE
 161 HORIZON DRIVE, SUITE 101
 VERONA, WISCONSIN 53593
 608.848.5060 PHONE | 608.848.2255 FAX

MADISON | MILWAUKEE
 KENOSHA | APPLETON

www.jsdinc.com

SERVICES PROVIDED TO:
CITY OF MADISON, PARKING UTILITY

215 MARTIN LUTHER KING JR. BLVD
 MADISON, WISCONSIN 53701-2986

PROJECT:
2014 PARKING RAMP RESTORATION

PROJECT LOCATION:
 GOVERNMENT EAST

JSD PROJECT NO.: 13-5576

SEAL/SIGNATURE:

ALTHOUGH EVERY EFFORT HAS BEEN MADE IN PREPARING THESE PLANS AND CHECKING THEM FOR ACCURACY, THE CONTRACTOR AND SUBCONTRACTORS MUST CHECK ALL DETAIL AND DIMENSIONS OF THEIR TRADE AND BE RESPONSIBLE FOR THE SAME.

DESIGN: JJE
 DRAWN: PGB
 APPROVED: JJE

PLAN MODIFICATIONS:	DATE:

DIGGERS HOTLINE

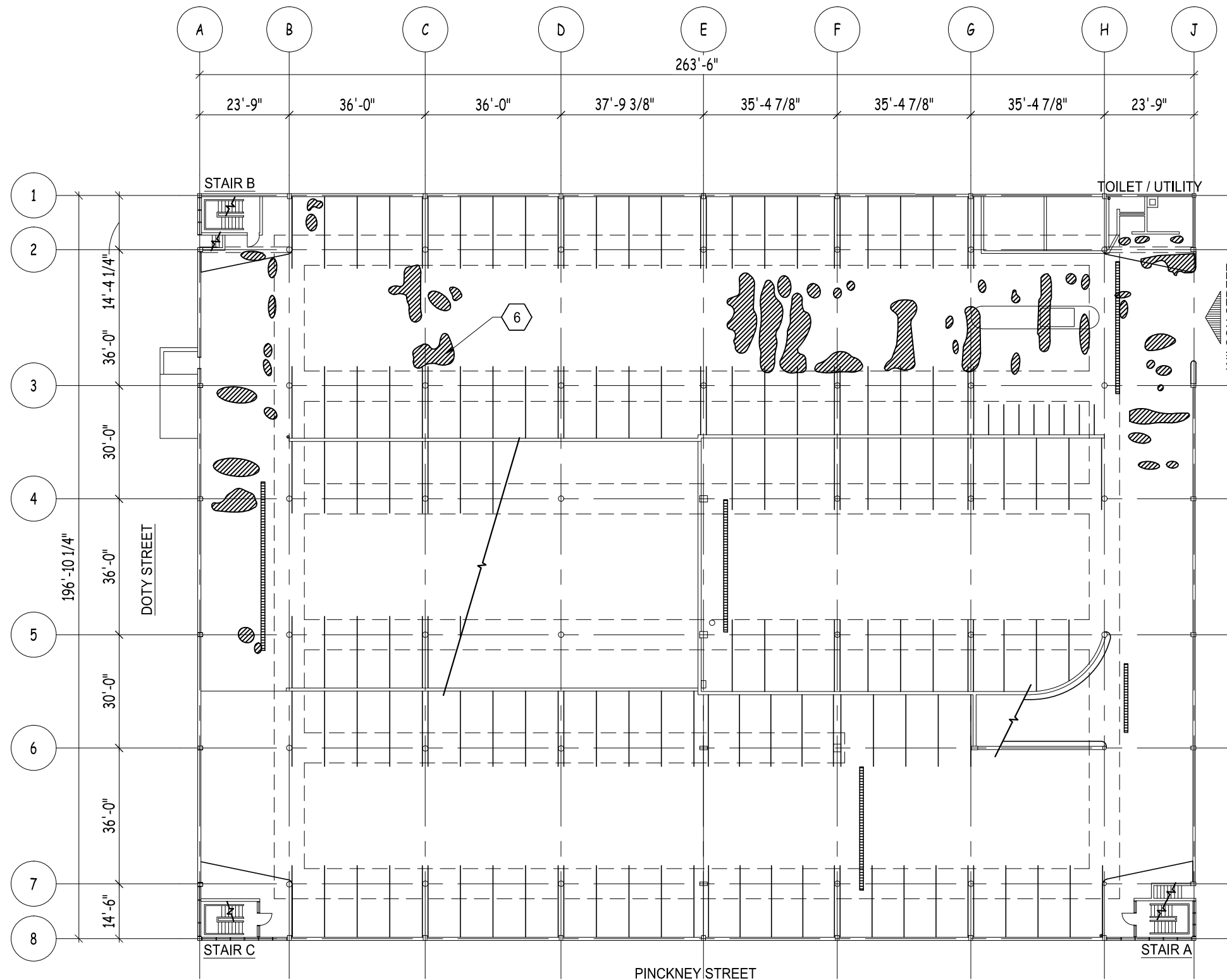
Toll Free (800) 242-8511
 Milwaukee Area (414) 258-1181
 Hearing Impaired TDD (800) 542-2289
 www.DiggersHotline.com

SHEET TITLE:
FIRST LEVEL TOPSIDE PLAN

SHEET NUMBER:
GE1

THESE PLANS AND DESIGNS ARE COPYRIGHT PROTECTED AND MAY NOT BE USED IN WHOLE OR IN PART WITHOUT THE WRITTEN CONSENT OF JSD PROFESSIONAL SERVICES, INC.

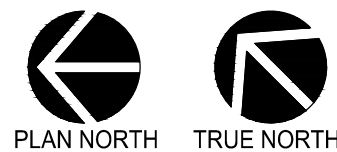
File: I:\2013\135576\Government_East\GE - Evaluation\GE 2013 - Evaluation.dwg Layout: GE2 User: gruedell Plotted: Feb 24, 2014 - 2:56pm Xref's:



1
GE2

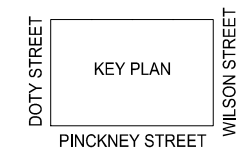
FIRST LEVEL UNDERSIDE PLAN

SCALE : 1/32" = 1'-0"



LEGEND

- CONCRETE DELAMINATION
- REPAIR ITEM



JSD Professional Services, Inc.
 • Engineers • Surveyors • Planners

"BUILDING RELATIONSHIPS WITH A COMMITMENT TO CLIENT SATISFACTION THROUGH TRUST, QUALITY AND EXPERIENCE"

- CIVIL ENGINEERING
- SURVEYING & MAPPING
- CONSTRUCTION SERVICES
- WATER RESOURCES
- PLANNING & DEVELOPMENT
- TRANSPORTATION ENGINEERING
- STRUCTURAL ENGINEERING
- LANDSCAPE ARCHITECTURE

MADISON REGIONAL OFFICE
 161 HORIZON DRIVE, SUITE 101
 VERONA, WISCONSIN 53593
 608.848.5060 PHONE | 608.848.2255 FAX

MADISON | MILWAUKEE
 KENOSHA | APPLETON

www.jsdinc.com

SERVICES PROVIDED TO:

CITY OF MADISON, PARKING UTILITY

215 MARTIN LUTHER KING JR. BLVD
 MADISON, WISCONSIN 53701-2986

PROJECT:
2014 PARKING RAMP RESTORATION

PROJECT LOCATION:
 GOVERNMENT EAST

JSD PROJECT NO.: 13-5576

SEAL/SIGNATURE:

ALTHOUGH EVERY EFFORT HAS BEEN MADE IN PREPARING THESE PLANS AND CHECKING THEM FOR ACCURACY, THE CONTRACTOR AND SUBCONTRACTORS MUST CHECK ALL DETAIL AND DIMENSIONS OF THEIR TRADE AND BE RESPONSIBLE FOR THE SAME.

DESIGN: JJE
 DRAWN: PGB
 APPROVED: JJE

PLAN MODIFICATIONS:	DATE:

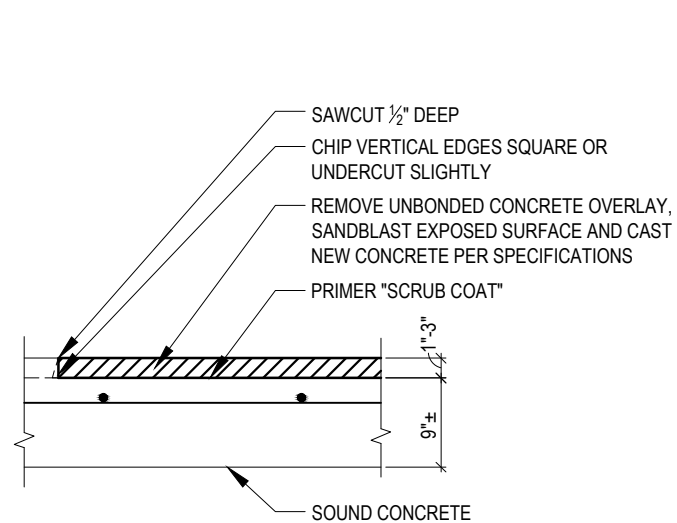
DIGGERS HOTLINE

Toll Free (800) 242-8511
 Milwaukee Area (414) 258-1181
 Hearing Impaired TDD (800) 542-2289
www.DiggersHotline.com

SHEET TITLE:
FIRST LEVEL UNDERSIDE PLAN

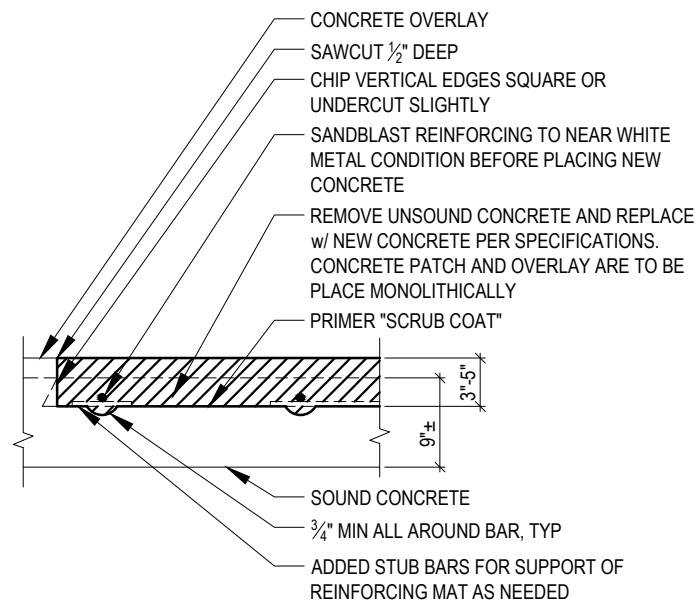
SHEET NUMBER:
GE2

THESE PLANS AND DESIGNS ARE COPYRIGHT PROTECTED AND MAY NOT BE USED IN WHOLE OR IN PART WITHOUT THE WRITTEN CONSENT OF JSD PROFESSIONAL SERVICES, INC.



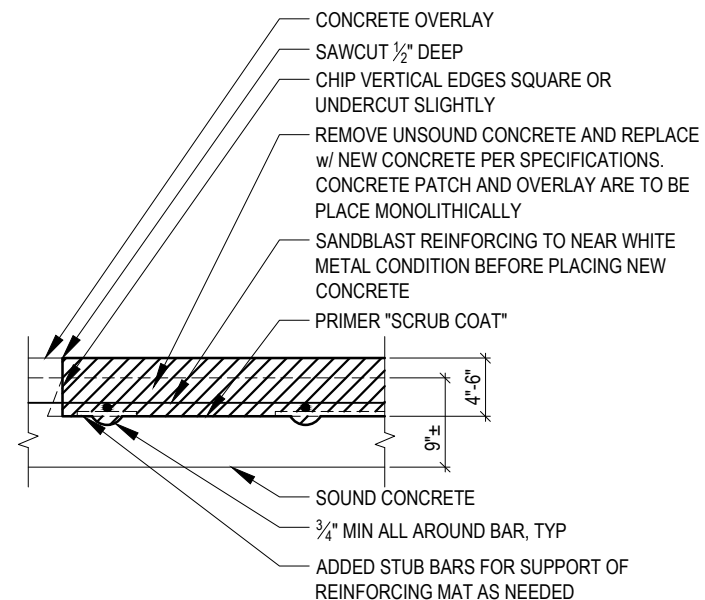
NOTE: REMOVAL OF CONCRETE TO TOP OF UNDERLYING REINFORCING IS AT NO ADDITIONAL CHARGE

1
D1
TOPSIDE SLAB RESTORATION
SCALE : NTS (UNBONDED OVERLAY)



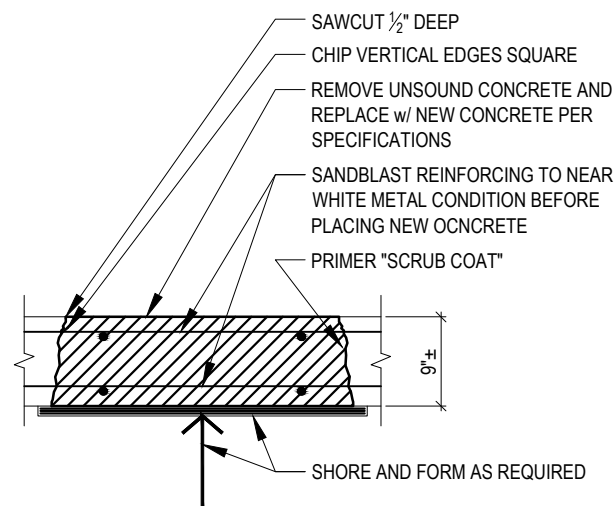
NOTE: REMOVAL OF CONCRETE BELOW SUPPORT BARS IS REQUIRED BY SPECIFICATION. NO ADDITIONAL PAYMENT FOR DEEPER REMOVAL IN THESE AREAS

2
D1
TOPSIDE SLAB RESTORATION
SCALE : NTS (1 LAYER REINFORCING)



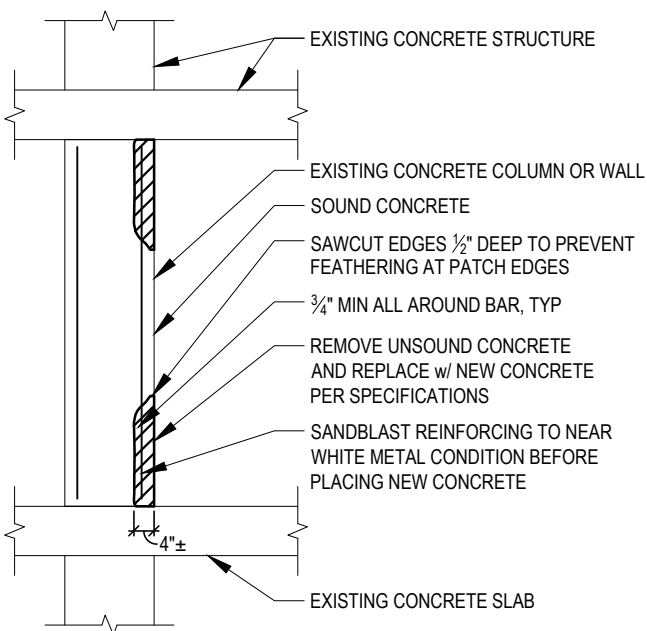
NOTE: REMOVAL OF CONCRETE BELOW SUPPORT BARS IS REQUIRED BY SPECIFICATION. NO ADDITIONAL PAYMENT FOR DEEPER REMOVAL IN THESE AREAS

3
D1
TOPSIDE SLAB RESTORATION
SCALE : NTS (2 LAYERS REINFORCING)

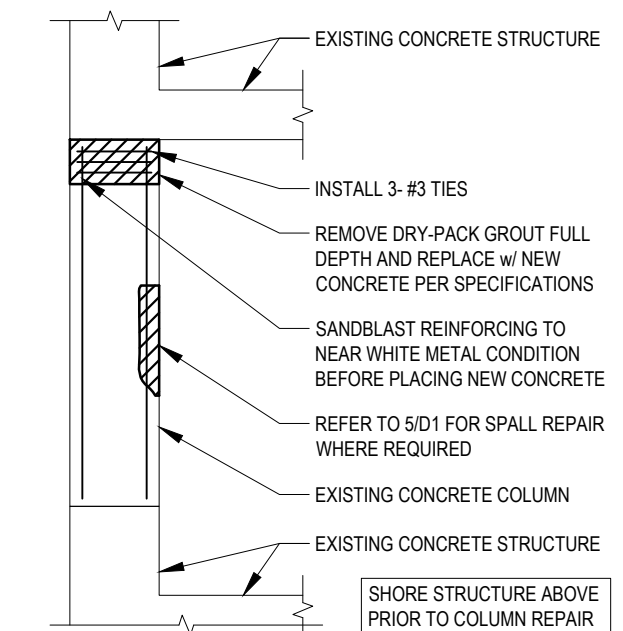


NOTE: REINFORCING SHOWN FOR REFERENCE ONLY. LOCATION AND SPACING TO BE FIELD VERIFIED

4
D1
FULL DEPTH SLAB REPLACEMENT
SCALE : NTS



5
D1
REPAIR AT VERTICAL SURFACES
SCALE : NTS



6
D1
REPAIR AT SSCL COLUMNS
SCALE : NTS

ALTHOUGH EVERY EFFORT HAS BEEN MADE IN PREPARING THESE PLANS AND CHECKING THEM FOR ACCURACY, THE CONTRACTOR AND SUBCONTRACTORS MUST CHECK ALL DETAIL AND DIMENSIONS OF THEIR TRADE AND BE RESPONSIBLE FOR THE SAME.

DESIGN: JJE
DRAWN: PGB
APPROVED: JJE

PLAN MODIFICATIONS: DATE:

DIGGERS HOTLINE
Toll Free (800) 242-8511
Milwaukee Area (414) 259-1181
Hearing Impaired TDD (608) 542-2289
www.DiggersHotline.com

SHEET TITLE:
DETAILS

SHEET NUMBER:
D1

"BUILDING RELATIONSHIPS WITH A COMMITMENT TO CLIENT SATISFACTION THROUGH TRUST, QUALITY AND EXPERIENCE"

- CIVIL ENGINEERING
- SURVEYING & MAPPING
- CONSTRUCTION SERVICES
- WATER RESOURCES
- PLANNING & DEVELOPMENT
- TRANSPORTATION ENGINEERING
- STRUCTURAL ENGINEERING
- LANDSCAPE ARCHITECTURE

MADISON REGIONAL OFFICE
 161 HORIZON DRIVE, SUITE 101
 VERONA, WISCONSIN 53593
 608.848.5060 PHONE | 608.848.2255 FAX

MADISON | MILWAUKEE
 KENOSHA | APPLETON

www.jsdinc.com

SERVICES PROVIDED TO:

CITY OF MADISON, PARKING UTILITY

 215 MARTIN LUTHER KING JR. BLVD
 MADISON, WISCONSIN 53701-2986

PROJECT:
2014 PARKING RAMP RESTORATION

PROJECT LOCATION:

JSD PROJECT NO.: 13-5576

SEAL/SIGNATURE:

ALTHOUGH EVERY EFFORT HAS BEEN MADE IN PREPARING THESE PLANS AND CHECKING THEM FOR ACCURACY, THE CONTRACTOR AND SUBCONTRACTORS MUST CHECK ALL DETAIL AND DIMENSIONS OF THEIR TRADE AND BE RESPONSIBLE FOR THE SAME.

DESIGN: JJE
 DRAWN: PGB
 APPROVED: JJE

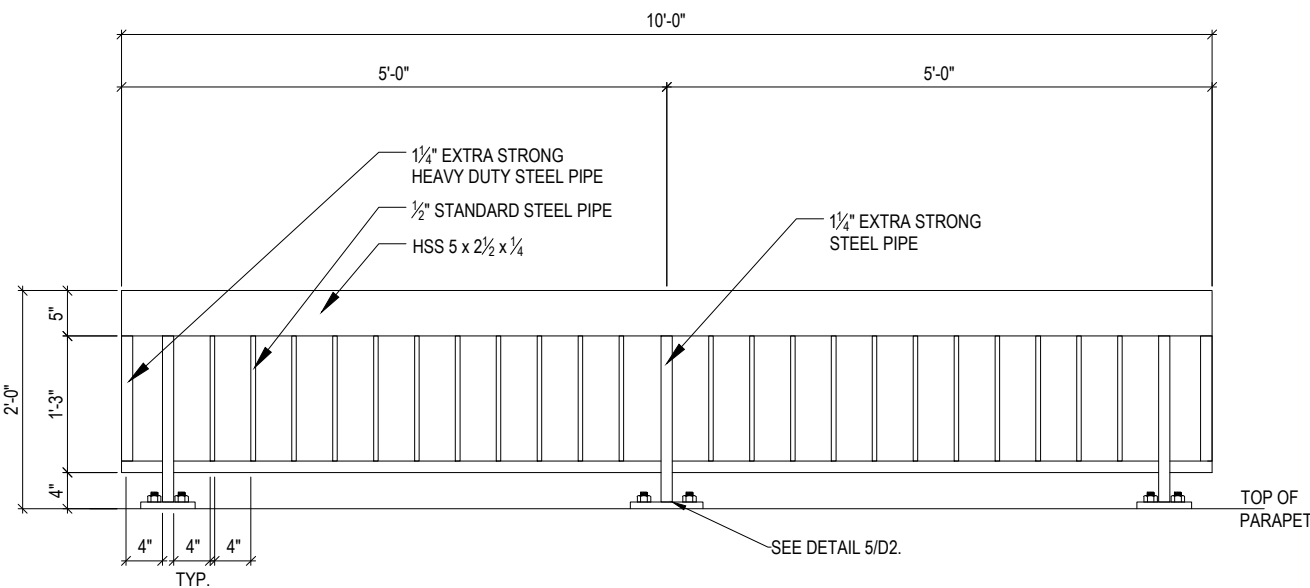
PLAN MODIFICATIONS: DATE:

DIGGERS HOTLINE

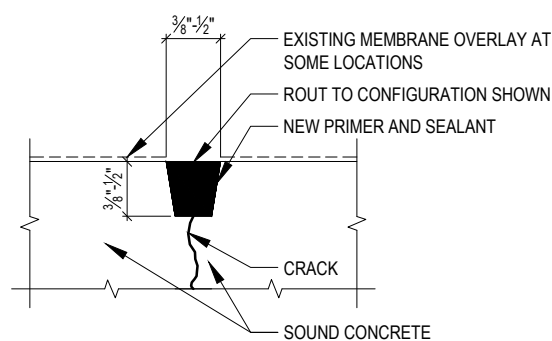
Toll Free (800) 242-8511
 Milwaukee Area (414) 259-1181
 Hearing Impaired TDD (800) 542-2289
 www.DiggersHotline.com

SHEET TITLE:
DETAILS

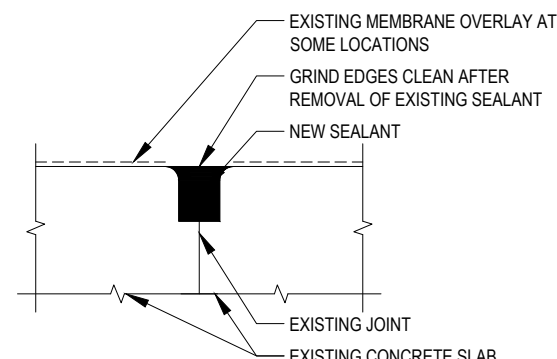
SHEET NUMBER:
D2



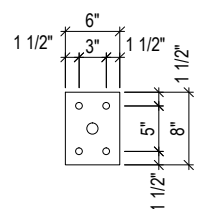
1
 D2
VEHICULAR BARRIER GAURDRAIL
 SCALE : NTS (SSCL)



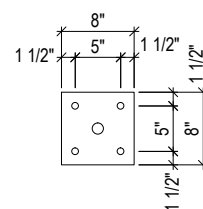
3
 D2
SLAB CRACK REPAIR
 SCALE : NTS SLAB JOINT SIMILAR



4
 D2
C.J. SEALANT REPLACEMENT
 SCALE : NTS SLAB CRACK SIMILAR

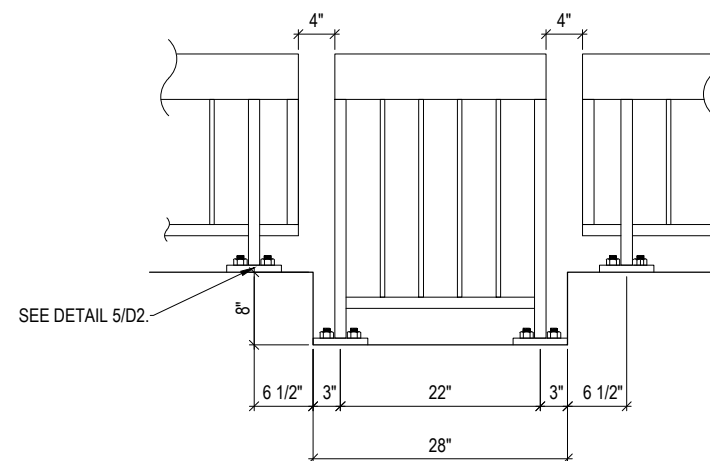


RAIL END BASE PLATE
 3/4" x 6" x 8" w/4 - 3/4" Ø
 THREADED RODS - EMBED
 6" INTO EXISTING PARAPET



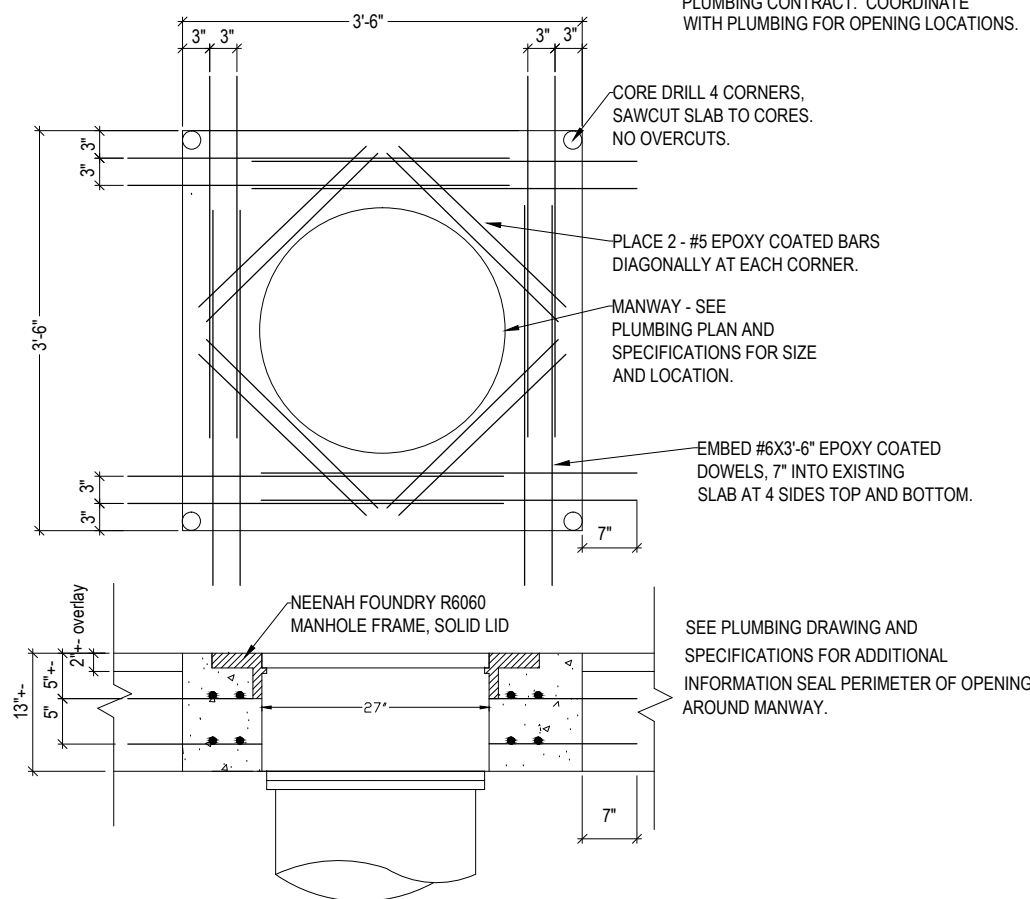
RAIL MIDDLE BASE PLATE
 3/4" x 8" x 8" w/4 - 3/4" Ø
 THREADED RODS-EMBED
 6" INTO EXISTING PARAPET

5
 D2
GAURDRAIL BASE PLATES
 SCALE : NTS (SSCL)



2
 D2
TOP LEVEL - COLUMN GAP GAURDRAIL
 SCALE : NTS (SSCo)

PLAN
 3'-6" X 3'-6" OPENING CUT IN
 SLAB FOR . MANWAY BY
 PLUMBING CONTRACT. COORDINATE
 WITH PLUMBING FOR OPENING LOCATIONS.



6
 D2
MANWAY SECTION DETAIL
 SCALE : NTS (SSCL)

GENERAL NOTES: PLUMBING

- VISIT THE BUILDING SITE AND BECOME THOROUGHLY FAMILIAR WITH ALL EXISTING CONDITIONS AFFECTING THE WORK.
- VERIFY ALL MEASUREMENTS, PIPE SIZES, PIPE LOCATIONS, ELEVATIONS, ETC. AT SITE.
- REVIEW DRAWINGS OF ALL OTHER TRADES. COORDINATE THE INSTALLATION AND SCHEDULING OF THE WORK WITH OTHER TRADES TO PREVENT INTERFERENCE WITH THEIR RESPECTIVE INSTALLATION.
- INSTALL ALL WORK SUBSTANTIALLY AS SHOWN ON THE DRAWINGS. DEVIATIONS FROM LOCATIONS OF PIPING INDICATED ON THE DRAWINGS MAY HAVE TO BE MADE AT NO ADDITIONAL COST TO THE OWNER IN ORDER TO CLEAR THE WORK OF THE OTHER TRADES. HOWEVER, ALL SUCH DEVIATIONS SHALL BE PREVIOUSLY APPROVED BY THE OWNER'S REPRESENTATIVE.
- PLUMBING CONTRACTOR SHALL BE RESPONSIBLE FOR ALL CUTTING AND PATCHING OF HOLES AND OPENINGS IN EXISTING WALLS AND FLOORS.
- IT IS THE INTENT OF THESE DRAWINGS THAT A COMPLETE WORKING SYSTEM PROPERLY TESTED, WILL BE OPERATIONAL UPON COMPLETION OF INSTALLATION.
- WHERE EXISTING PIPING IS REMOVED AND NOT RE-CONNECTED WITH NEW WORK CAP EXISTING SERVICES SO THAT DEAD END PIPE RUNS ARE NOT CREATED.
- CONFLICT BETWEEN DRAWINGS AND SPECIFICATIONS SHALL BE BROUGHT TO THE ATTENTION OF THE ENGINEER PRIOR TO BID OPENING. THE ENGINEER RESERVES THE RIGHT TO FINAL DECISION.
- UNLESS NOTED OTHERWISE ALL GRAVITY WASTE PIPING SHALL BE INSTALLED AT A SLOPE OF 1/8" PER FOOT.

GENERAL DEMOLITION & NEW WORK NOTES:

- THIS CONTRACTOR SHALL VERIFY THE EXISTING CONDITIONS AT THE PROJECT SITE BEFORE SUBMITTING BID. CONTR IS ADVISED THAT ALL LOCATIONS ARE APPROXIMATE.
- AN ATTEMPT HAS BEEN MADE TO SHOW ALL PIPING, FIXTURES, AND EQUIPMENT. THIS CONTRACTOR SHALL VISIT THE SITE TO VERIFY COMPONENTS, LOCATIONS AND SIZES SHOWN OR NOT SHOWN. ALL COMPONENTS NEED TO BE REMOVED IN THE DEMOLITION AREA UNLESS NOTED ON THE DRAWINGS.
- THIS CONTRACTOR SHALL BE RESPONSIBLE FOR HIS OWN DEMOLITION, REMOVAL, CAPPING, STORING, ABANDONING, DISCONNECTING, RELOCATING AND RECONNECTION OF EXISTING EQUIPMENT AND MATERIAL. ALL CUTTING, PATCHING, REPAIRING, REPLACEMENT AND REFINISHING, SHALL MATCH THE EXISTING CONSTRUCTION AS NEARLY AS POSSIBLE.
 - (A) REMOVE ANY PIPES PROTRUDING ABOVE FINISHED FLOOR OR THROUGH WALL AND CAP
- EXCEPT WHERE OTHERWISE SHOWN OR NOTED ON DRWG. - "TO BE RETAINED, RELOCATED" OR HEREINAFTER NOTED, ALL EXISTING EQUIPMENT AND MATERIAL IN AREAS TO BE REMODELED/ALTERED SHALL BE REMOVED WHERE THEY INTERFERE WITH PROPOSED NEW CONSTRUCTION &/OR INTERFERE W/PROPOSED USAGE OF SPACE BY OWNER AS FOLLOWS:
 - (A) REMOVE ANY PIPES PROTRUDING ABOVE FINISHED FLOOR OR THROUGH WALL AND CAP
- THESE DRAWINGS ARE NECESSARILY DIAGRAMMATIC IN NATURE. NOT ALL FITTINGS, OFFSETS, VENTS, OR DRAINS ARE SHOWN. THE CONTRACTOR SHALL VISIT THE SITE PRIOR TO BIDDING AND INCLUDE ALL FITTINGS, OFFSETS, VENTS, CLEANOUTS AND DRAINS AS REQUIRED TO PROVIDE A COMPLETE AND FUNCTIONING SYSTEM.
- ALL PLUMBING PIPE RELATED CUTTING, PATCHING AND/OR REMOVAL AND REPLACEMENT OF EXISTING WALLS, FLOORS & CEILINGS SHALL BE BY P.C.
- PATCH ALL HOLES WITH NON-SHRINK GROUT.

PLUMBING ABBREVIATIONS

ABBR	DESCRIPTION
ADW	ABOVE DUCTWORK
AF	ABOVE FLOOR
AFCH	AMERICAN FAMILY CHILDREN'S HOSPITAL
AFH	ABOVE FINISHED FLOOR
AHU	AIR HANDLING UNIT
ALP	ALARM PANEL
AO	AIR OUTLET
AP	ACCESS PANEL
ASC	ABOVE SUSPENDED CEILING
AV	ACID VENT
AW	ACID WASTE
BDW	BELOW DUCTWORK
BF	BELOW FLOOR
BFP	BACKFLOW PREVENTER
BV	BALL VALVE
CB	CATCH BASIN
CI	CAST IRON
CLG	CEILING
CO	CLEANOUT
CO ₂	CARBON DIOXIDE
CO ₂ V	CARBON DIOXIDE RELIEF VENT
CP	CIRCULATION PUMP
CSS	CLINICAL SERVICE SINK
CS	COLD SOFT WATER
CW	COLD WATER
CWV	CLEARWATER VENT
CWW	CLEARWATER WASTE
DF	DRINKING FOUNTAIN
DFU	DRAINAGE FIXTURE UNITS
DN	DOWN
EC	ELECTRICAL CONTRACTOR
EEW	EMERGENCY EYE WASH
EEWS	EMERGENCY EYE WASH/SHOWER
EWC	ELECTRIC WATER COOLER
F	FIRE
FCO	FLOOR CLEANOUT
FD	FLOOR DRAIN
FFA	FROM FLOOR ABOVE
FFB	FROM FLOOR BELOW
FHC	FIRE HOSE CABINET
FIS	FROM INTERSTITIAL SPACE
FPC	FIRE PROTECTION CONTRACTOR
FS	FLOOR SINK
FT	FOOT
FWCO	FINISHED WALL CLEANOUT
G	GAS
GC	GENERAL CONTRACTOR
GO	GAS OUTLET
GPM	GALLONS PER MINUTE
HB	HOSE BIBB
HC	HEATING CONTRACTOR
HD	HUB DRAIN
HW	HOT WATER
HWD	HOT WATER DISPENSER
HWR	HOT WATER RECIRCULATION/RETURN
IE	INVERT ELEVATION
JS	JANITORS SINK
L	LAVATORY (LAV)
LVC	LOCK VALVE CLOSED
LVO	LOCK VALVE OPEN
MA	MEDICAL AIR
MAC	MEDICAL AIR COMPRESSOR
MA-I	MEDICAL AIR INTAKE
MALP	MASTER ALARM PANEL
MB	MOP BASIN
MH	MANHOLE
MV	MEDICAL VACUUM
MV-E	MEDICAL VACUUM EXHAUST
MVP	MEDICAL VACUUM PUMP
N ₂	NITROGEN
N ₂ -V	NITROGEN RELIEF VENT
N ₂ O	NITROUS OXIDE RELIEF VENT
NC	NORMALLY CLOSED
NCC	NITROGEN CONTROL CABINET
NIC	NOT IN CONTRACT
NO	NORMALLY OPEN
N ₂ O	NITROUS OXIDE
NPCS	NON-POTABLE COLD SOFT WATER
O ₂	OXYGEN (O ₂)
OSD	OPEN SITE DRAIN
PC	PLUMBING CONTRACTOR
PRV	PRESSURE REDUCING VALVE
PSI	POUNDS PER SQUARE INCH
RD	ROOF DRAIN
RM	ROOM
RO	REVERSE OSMOSIS
RPPB	REDUCED PRESSURE BACKFLOW PREVENTER
RV	RELIEF VENT
S	SINK
SAN	SANITARY
SCSK	SCRUB SINK
SFU	SUPPLY FIXTURE UNITS
SH	SHOWER
SS	SANITARY STACK
SVB	BACK SIPHONAGE BACKFLOW VACUUM BREAKER
ST	STORM
SV	STACK VENT
TC	TEMPERATURE CONTROLS
TD	TRENCH DRAIN
TFA	TO FLOOR ABOVE
TFB	TO FLOOR BELOW
TIS	TO INTERSTITIAL SPACE
TMV	THERMOSTATIC MIXING VALVE
TW	TEMPERED WATER PIPING
UR	URINAL
UF	UNDER FLOOR
UWHC	UW HOSPITAL AND CLINIC
V	VENT
VB	VALVE BOX (MEDICAL GAS)
VTR	VENT THRU ROOF
W	WASTE
WAGD	WASTE ANESTHETIC GAS DISPOSAL
WB	WALL BOX
WC	WATER CLOSET
WF	WATER FILTER
WH	WALL HYDRANT
WHA	WATER HAMMER ARRESTOR
WSFU	WATER SUPPLY FIXTURE UNITS

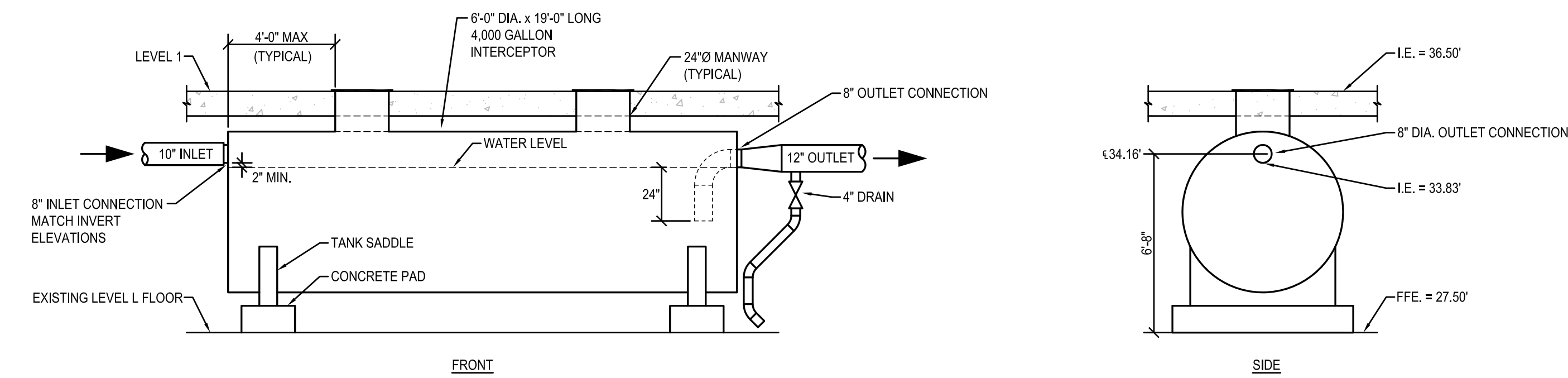
NOTE:
THIS IS A COMPOSITE LIST OF ABBREVIATIONS. NOT ALL PERTAIN SPECIFICALLY TO THIS JOB.

PLUMBING SYMBOL LIST

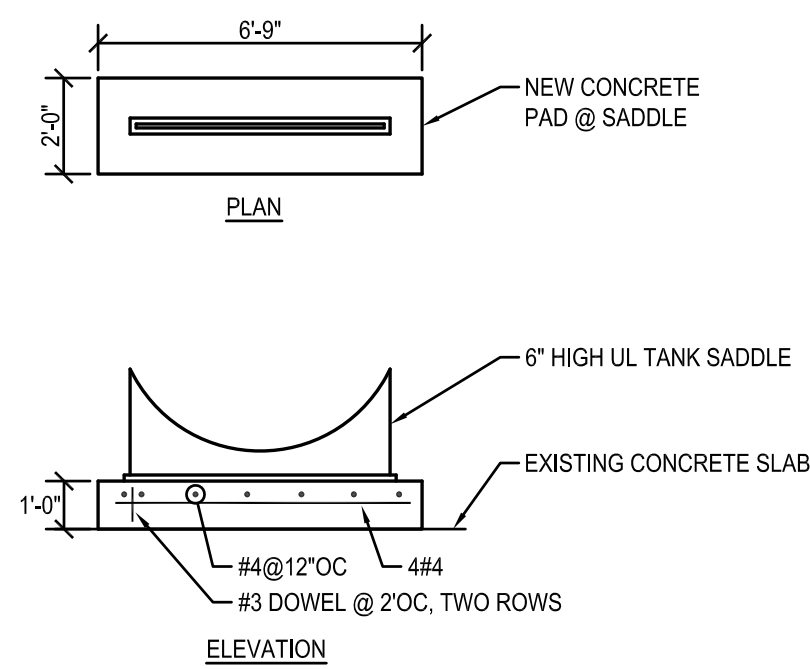
SYMBOL	DESCRIPTION
---	COLD WATER SUPPLY PIPING
---	HOT WATER SUPPLY PIPING
---	HOT WATER RECIRCULATION/ RETURN
-----	PIPING EQUIPMENT TO BE REMOVED
---	VENT PIPING
---60A---	60 PSI COMPRESSED AIR PIPING
---225A---	225 PSI COMPRESSED AIR PIPING
---AV---	ACID VENT PIPING
---AW---	ACID WASTE PIPING
---CO ₂ ---	CARBON DIOXIDE PIPING
---CO ₂ -V---	CARBON DIOXIDE RELIEF VENT PIPING
---CWW---	CLEAR WATER WASTE PIPING
---CWV---	CLEAR WATER VENT PIPING
---CS---	COLD SOFT WATER PIPING
---D---	INDIRECT DRAIN
---	FIRE PROTECTION PIPING
---NPCS---	NON-POTABLE COLD SOFT PIPING
---O ₂ ---	OXYGEN PIPING
---RO---	REVERSE OSMOSIS WATER PIPING
---SAN---	SANITARY LINE ABOVE FLOOR
---SAN---	SANITARY LINE BELOW FLOOR
---ST---	STORM PIPING
---TW---	TEMPERED WATER PIPING
---	BACKFLOW PREVENTER
---	BALANCING VALVE
---	BALL VALVE
---	BUTTERFLY VALVE
---	CHECK VALVE
---	CLEANOUT - FLOOR OR YARD
---	OUTSIDE SCREW & YOLK (OS&Y) GATE VALVE
---	ELBOW TURNED DOWN
---	ELBOW TURNED UP
F-1	FIXTURE DESIGNATION & NUMBER
---	FLANGED UNION
2 FCO-A	FLOOR DRAIN, DESIGNATION NUMBER & SIZE
---	FLOW
---	FLOW SWITCH
---	GATE VALVE
---	GLOBE VALVE
---	MECHANICAL SHOCK ARRESTOR
---	NEW CONNECTION TO EXISTING BEGINNING/END POINT
DN	PIPING DOWN
UP	PIPING UP
---	PRESSURE REDUCING VALVE
---	SCREWED UNION
---	TEE - BOTTOM OUTLET
---	TEE - TOP OUTLET
---	TEMPERATURE & PRESSURE RELIEF VALVE
---	THERMOMETER
---	WALL CLEANOUT
---	WALL HYDRANT
---	ZONE VALVE BOX
---	EXISTING SPRINKLER HEAD
---	NEW CONCEALED SPRINKLER HEAD
---	NEW CONCEALED SPRINKLER HEAD WITH GASKET

PLUMBING SHEET INDEX

P000	PLUMBING LEGEND, NOTES AND DETAILS
P100	LEVEL L PLUMBING PLAN - NEW WORK
P100D	LEVEL L PLUMBING PLAN - DEMOLITION
P101	LEVEL 1 PLUMBING PLAN

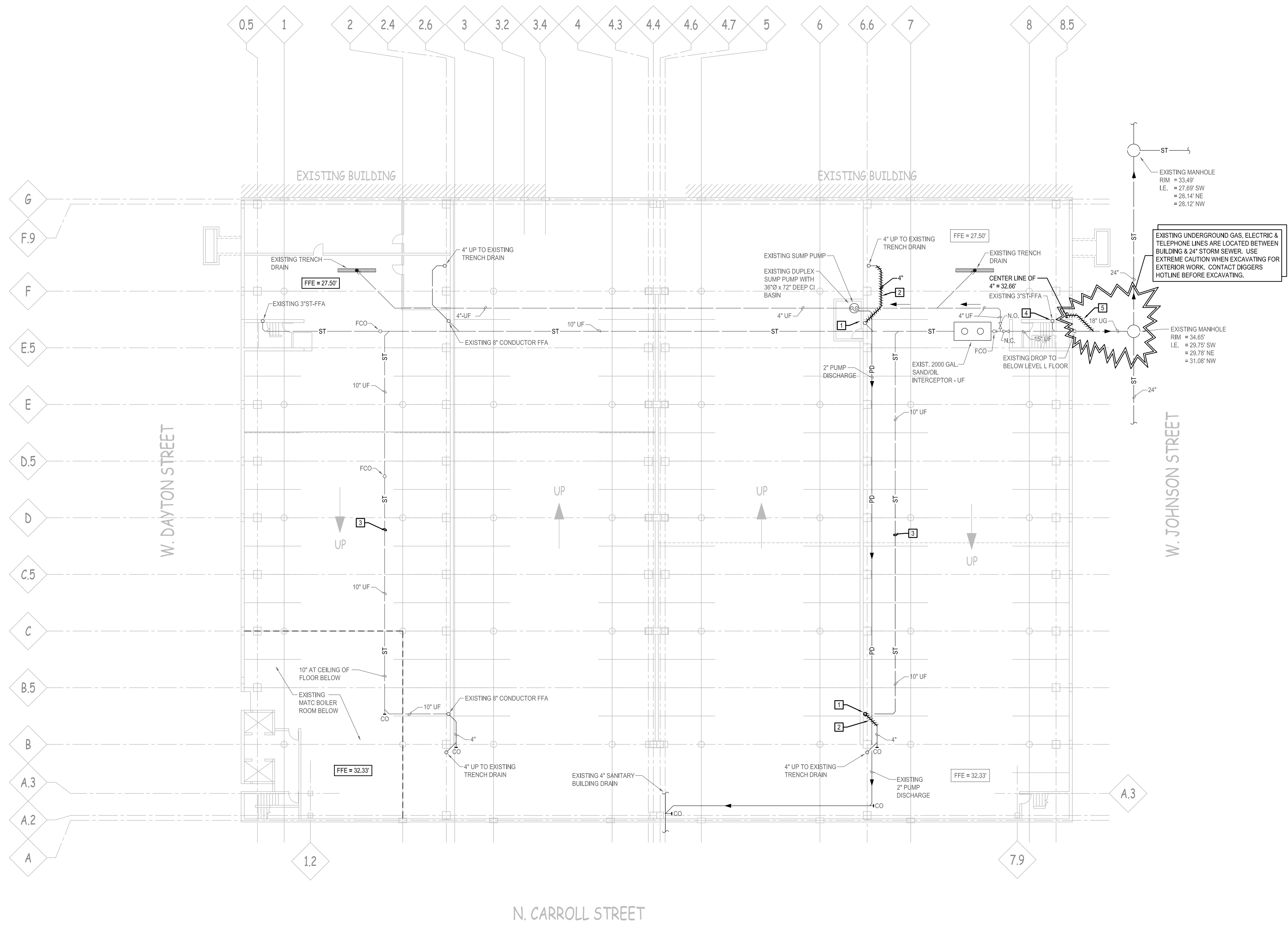


1 SAND INTERCEPTOR DETAIL
NO SCALE



1 CONCRETE SUPPORT FOR SAND INTERCEPTOR
SCALE: 1/4" = 1'-0"

PLAN MODIFICATIONS:	DATE:



GENERAL NOTES (P100D):

1. ALL EXISTING PIPING TO REMAIN EXCEPT AS INDICATED.

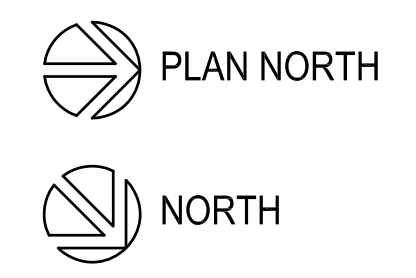
KEYED DEMOLITION NOTES (P100D):

- 1 REMOVE EXISTING 8" VERTICAL CONDUCTOR BETWEEN DECK ABOVE & FLOOR. EXISTING 8" FROM FLOOR ABOVE TO BE RE-USED. CAP EXISTING 8" NEAR FLOOR.
- 2 REMOVE EXISTING 4" PIPING.
- 3 EXISTING PIPING TO BE ABANDONED IN PLACE.
- 4 EXISTING 3" STORM CONDUCTOR FFA TO REMAIN. CAP EXISTING STORM TFB & ABANDON IN PLACE.
- 5 REMOVE EXISTING 4" STORM.

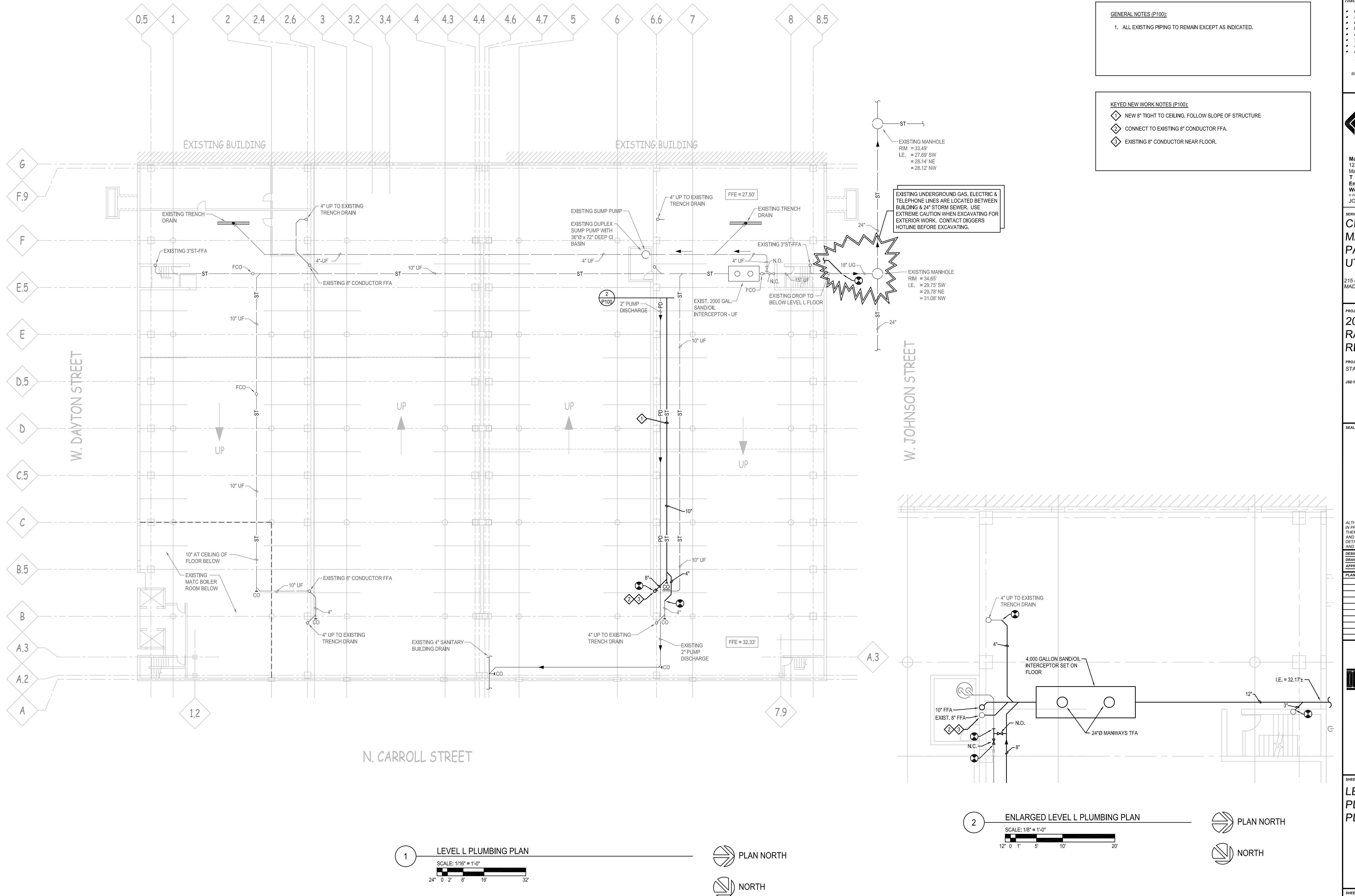
EXISTING UNDERGROUND GAS, ELECTRIC & TELEPHONE LINES ARE LOCATED BETWEEN BUILDING & 24" STORM SEWER. USE EXTREME CAUTION WHEN EXCAVATING FOR EXTERIOR WORK. CONTACT DIGGERS HOTLINE BEFORE EXCAVATING.

EXISTING MANHOLE
 RIM = 34.65'
 I.E. = 29.75' SW
 = 29.78' NE
 = 31.08' NW

1 LEVEL L PLUMBING PLAN - DEMOLITION
 SCALE: 1/16" = 1'-0"
 24" 0' 2' 8' 16' 32'



THESE PLANS AND SPECIFICATIONS ARE THE PROPERTY OF JSD PROFESSIONAL SERVICES, INC. AND ARE NOT TO BE REPRODUCED OR TRANSMITTED IN ANY FORM OR BY ANY MEANS, ELECTRONIC OR MECHANICAL, INCLUDING PHOTOCOPYING, RECORDING, OR BY ANY INFORMATION STORAGE AND RETRIEVAL SYSTEM, WITHOUT THE WRITTEN CONSENT OF JSD PROFESSIONAL SERVICES, INC.



GENERAL NOTES (P100):

- ALL EXISTING PIPING TO REMAIN EXCEPT AS INDICATED.

KEYED NEW WORK NOTES (P100):

- NEW 8" TIGHT TO CEILING, FOLLOW SLOPE OF STRUCTURE
- CONNECT TO EXISTING 8" CONDUCTOR FFA.
- EXISTING 8" CONDUCTOR NEAR FLOOR.

EXISTING UNDERGROUND GAS, ELECTRIC & TELEPHONE LINES ARE LOCATED BETWEEN BUILDING & 24" STORM SEWER. USE EXTREME CAUTION WHEN EXCAVATING FOR EXTERIOR WORK. CONTACT DIGGERS HOTLINE BEFORE EXCAVATING.

EXISTING MANHOLE RIM = 34.65' I.E. = 29.75' SW = 29.78' NE = 31.08' NW

JSD Professional Services, Inc.
 • Engineers • Surveyors • Planners

"BUILDING RELATIONSHIPS WITH A COMMITMENT TO CLIENT SATISFACTION THROUGH TRUST, QUALITY AND EXPERIENCE"

- CIVIL ENGINEERING
- SURVEYING & MAPPING
- CONSTRUCTION SERVICES
- WATER RESOURCES
- PLANNING & DEVELOPMENT
- TRANSPORTATION ENGINEERING
- STRUCTURAL ENGINEERING
- LANDSCAPE ARCHITECTURE

MADISON REGIONAL OFFICE
 161 HORIZON DRIVE, SUITE 101
 VERONA, WISCONSIN 53593
 608.848.5080 PHONE 608.848.2255 FAX
 MADISON | MILWAUKEE
 KENOSHA | APPLETON
 www.jsdinc.com

Henneman Engineering

Madison:
 1232 Fourier Drive, Suite 101
 Madison, Wisconsin 53717-1960
 T 608.833.7000 F 608.833.6966
 Email: info@henneman.com
 Website: http://www.henneman.com
 © 2007 Henneman Engineering
 JOB NO. 13-8002

SERVICES PROVIDED TO:

CITY OF MADISON, PARKING UTILITY

215 MARTIN LUTHER KING JR. BLVD
 MADISON, WISCONSIN 53701-2986

PROJECT:
2014 PARKING RAMP RESTORATION

PROJECT LOCATION:
 STATE STREET CAPITOL

JSD PROJECT NO.: 13-5576

ALTHOUGH EVERY EFFORT HAS BEEN MADE IN PREPARING THESE PLANS AND CHECKING THEM FOR ACCURACY, THE CONTRACTOR AND SUBCONTRACTORS MUST CHECK ALL DETAIL AND DIMENSIONS OF THEIR TRADE AND BE RESPONSIBLE FOR THE SAME.

DESIGN: JJE
 DRAWN: PGB
 APPROVED: JJE

PLAN MODIFICATIONS:

NO.	DATE	DESCRIPTION

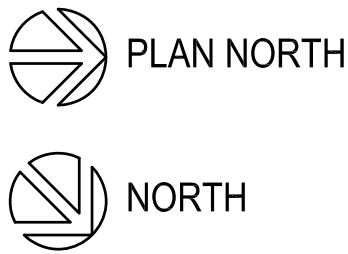
DIGGERS HOTLINE

Toll Free (800) 242-8511
 Milwaukee Area (414) 259-1191
 Hearing Impaired TDD (800) 542-2289
 www.DiggersHotline.com

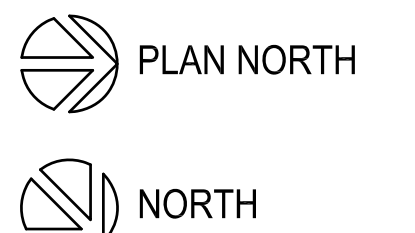
SHEET TITLE:
LEVEL L PLUMBING PLAN

SHEET NUMBER:
P100

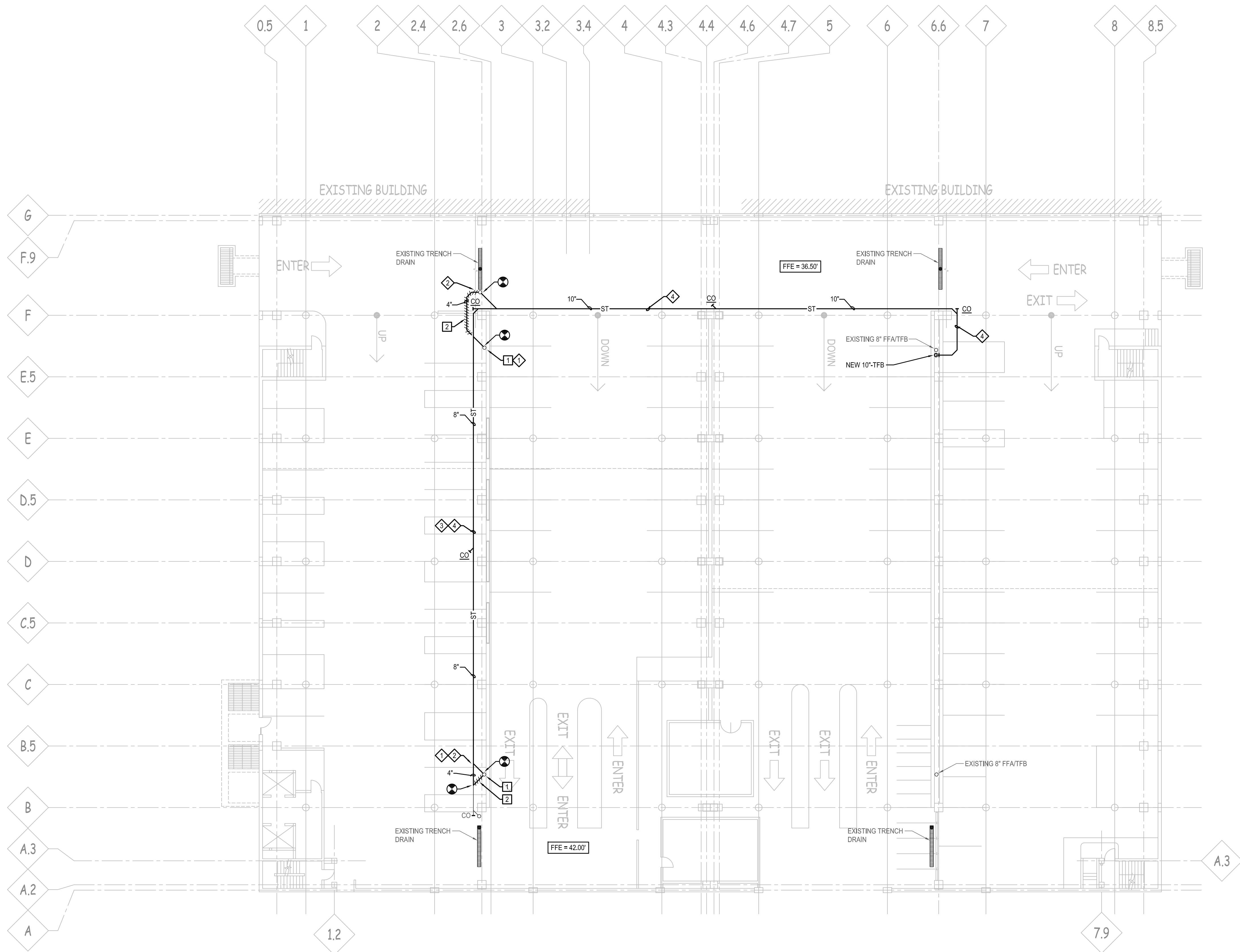
1 LEVEL L PLUMBING PLAN
 SCALE: 1/16" = 1'-0"
 24" 0 2' 8' 16' 32'



2 ENLARGED LEVEL L PLUMBING PLAN
 SCALE: 1/8" = 1'-0"
 12" 0 1' 5' 10' 20'



THESE PLANS AND SPECIFICATIONS ARE COPYRIGHT PROPERTY OF JSD PROFESSIONAL SERVICES, INC. AND SHALL NOT BE REPRODUCED OR TRANSMITTED IN ANY FORM OR BY ANY MEANS WITHOUT THE WRITTEN CONSENT OF JSD PROFESSIONAL SERVICES, INC.



GENERAL NOTES (P101):

- ALL PIPING SHOWN IS RUN AT CEILING.
- ALL EXISTING PIPING TO REMAIN EXCEPT AS INDICATED.

KEYED DEMOLITION NOTES (P101):

- REMOVE EXISTING 8" STORM CONDUCTOR FFA. CAP NEAR FLOOR.
- REMOVE EXISTING 4" STORM PIPING.

KEYED NEW WORK NOTES (P101):

- CONNECT TO EXISTING 8" STORM FFA.
- RE-CONNECT EXISTING 4" STORM PIPING FROM FDI/TD ON FLOOR ABOVE.
- FOLLOW SLOPE OF DECK ABOVE.
- INSTALL AS HIGH AS POSSIBLE.

1 LEVEL 1 PLUMBING PLAN
 SCALE: 1/16" = 1'-0"
 24' 0' 2' 8' 16' 32'