

**Time:** 5/9/2018 11:19:44 AM

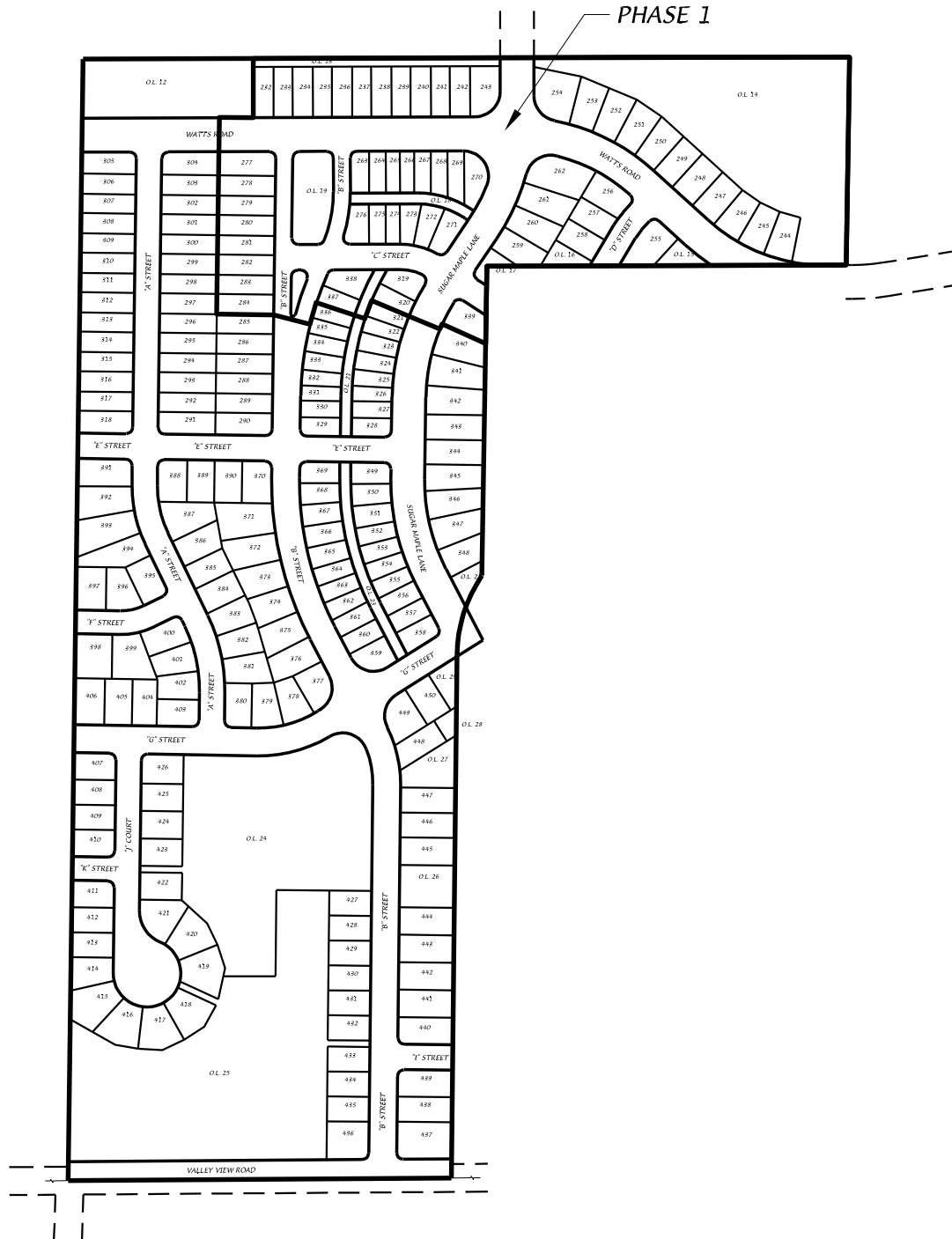
**Session:** C:\GTViewer\_Sessions\Deming & Fourier SW.gts

**City of Madison, WI - GIS/Mapping data**

Printed By: entnt


Disclaimer: The City makes no representation about the accuracy of these records and shall not be liable for any damages

# Birchwood Point South - Phase Map



**D'ONOFRIO KOTTKE AND ASSOCIATES, INC.**  
 7530 Westward Way, Madison, WI 53717  
 Phone: 608.833.7530 • Fax: 608.833.1089  
**YOUR NATURAL RESOURCE FOR LAND DEVELOPMENT**



0 400  
  
 Scale 1" = 400'

DATE: 03-23-18

REV.:

F.N.: 17-07-116

DRAWN BY: JMS

U:/USER/1707116/DRAWINGS/Phase Map.DWG