



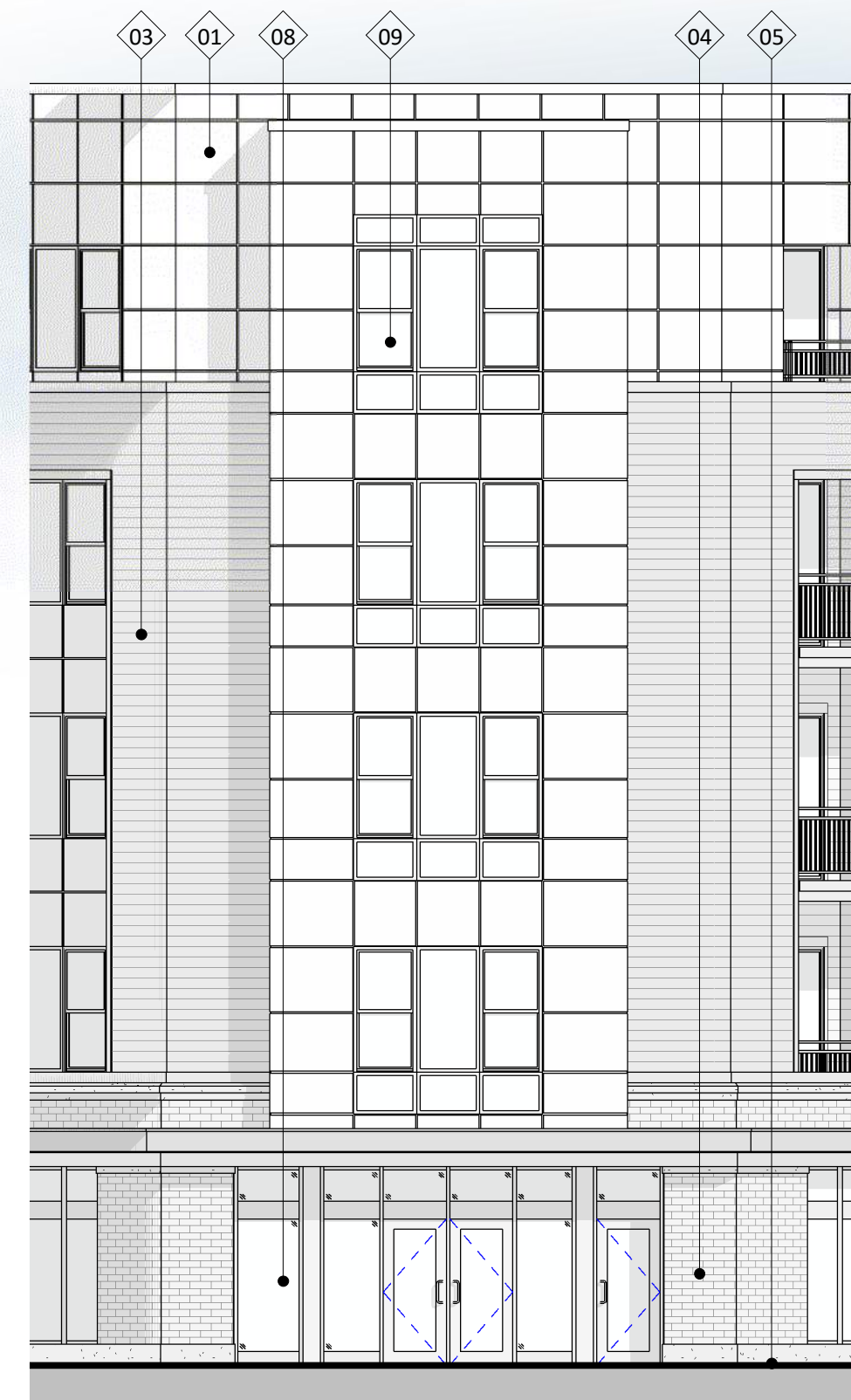
**knothe + bruce**  
ARCHITECTS  
Phone: 8401 Greenway Blvd, Suite 900  
608.836.3690 Middleton, WI 53562

KEY PLAN

ISSUED  
UDC SUBMITTAL



1 CITY ELEVATION - SOUTH  
A201 1/8" = 1'-0"



3 CITY ELEVATION - SOUTHEAST  
A201 1/8" = 1'-0"



2 CITY ELEVATION - EAST  
A201 1/8" = 1'-0"

PROJECT TITLE  
**Mixed-Use  
Redevelopment**

2450 E. Washington  
Ave., Madison  
SHEET TITLE  
**Exterior  
Elevations**

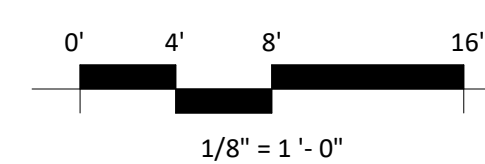
SHEET NUMBER

**A201**

PROJECT NUMBER

2422

EXTERIOR MATERIAL SCHEDULE			
MARK	BUILDING ELEMENT	MANUFACTURER	COLOR
01	COMPOSITE PANEL - SMOOTH	JAMES HARDIE	COBBLESTONE
02	COMPOSITE SIDING 6"	JAMES HARDIE	MONTEREY TAUPE
03	COMPOSITE SIDING 6"	JAMES HARDIE	IRON GRAY
04	BRICK VENEER	GENERAL SHALE	MIX 50% STEEL, 50% CAVALRY GRAY
05	CAST STONE	EDWARDS	18-025
06	RAILINGS & HANDRAILS	SUPERIOR	BLACK
07	RAILINGS - PARAPET	SUPERIOR	SANDSTONE
08	ALUMINIUM STOREFRONT	N/A	BLACK
09	COMPOSITE WINDOW	ANDERSEN	BLACK





1 CITY ELEVATION - WEST  
A202 1/8" = 1'-0"

ISSUED  
UDC SUBMITTAL



2 CITY ELEVATION - NORTH  
A202 1/8" = 1'-0"

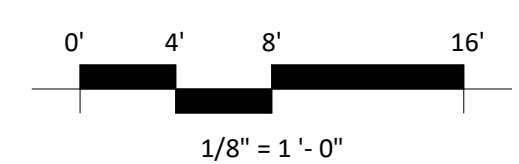
PROJECT TITLE  
**Mixed-Use  
Redevelopment**

2450 E. Washington  
Ave., Madison  
SHEET TITLE  
**Exterior  
Elevations**

SHEET NUMBER

**A202**

PROJECT NUMBER  
**2422**



EXTERIOR MATERIAL SCHEDULE			
MARK	BUILDING ELEMENT	MANUFACTURER	COLOR
01	COMPOSITE PANEL - SMOOTH	JAMES HARDIE	COBBLESTONE
02	COMPOSITE SIDING 6"	JAMES HARDIE	MONTEREY TAUPE
03	COMPOSITE SIDING 6"	JAMES HARDIE	IRON GRAY
04	BRICK VENEER	GENERAL SHALE	MIX 50% STEEL, 50% CAVALRY GRAY
05	CAST STONE	EDWARDS	18-025
06	RAILINGS & HANDRAILS	SUPERIOR	BLACK
07	RAILINGS - PARAPET	SUPERIOR	SANDSTONE
08	ALUMINIUM STOREFRONT	N/A	BLACK
09	COMPOSITE WINDOW	ANDERSEN	BLACK



1 COLORED CITY ELEVATION - SOUTH  
A203 1/8" = 1'-0"

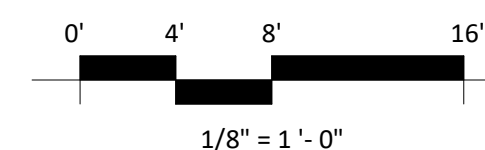


3 COLORED CITY ELEVATION - SOUTHEAST  
A203 1/8" = 1'-0"



2 COLORED CITY ELEVATION - EAST  
A203 1/8" = 1'-0"

EXTERIOR MATERIAL SCHEDULE			
MARK	BUILDING ELEMENT	MANUFACTURER	COLOR
01	COMPOSITE PANEL - SMOOTH	JAMES HARDIE	COBBLESTONE
02	COMPOSITE SIDING 6"	JAMES HARDIE	MONTEREY TAUPE
03	COMPOSITE SIDING 6"	JAMES HARDIE	IRON GRAY
04	BRICK VENEER	GENERAL SHALE	MIX 50% STEEL, 50% CAVALRY GRAY
05	CAST STONE	EDWARDS	18-025
06	RAILINGS & HANDRAILS	SUPERIOR	BLACK
07	RAILINGS - PARAPET	SUPERIOR	SANDSTONE
08	ALUMINIUM STOREFRONT	N/A	BLACK
09	COMPOSITE WINDOW	ANDERSEN	BLACK





1 COLORED CITY ELEVATION - WEST  
A204 1/8" = 1'-0"

ISSUED  
UDC SUBMITTAL



2 COLORED CITY ELEVATION - NORTH  
A204 1/8" = 1'-0"

PROJECT TITLE  
**Mixed-Use  
Redevelopment**

2450 E. Washington  
Ave., Madison  
SHEET TITLE  
**Exterior  
Elevations Colored**

SHEET NUMBER

**A204**

PROJECT NUMBER

**2422**

EXTERIOR MATERIAL SCHEDULE			
MARK	BUILDING ELEMENT	MANUFACTURER	COLOR
01	COMPOSITE PANEL - SMOOTH	JAMES HARDIE	COBBLESTONE
02	COMPOSITE SIDING 6"	JAMES HARDIE	MONTEREY TAUPE
03	COMPOSITE SIDING 6"	JAMES HARDIE	IRON GRAY
04	BRICK VENEER	GENERAL SHALE	MIX 50% STEEL, 50% CAVALRY GRAY
05	CAST STONE	EDWARDS	18-025
06	RAILINGS & HANDRAILS	SUPERIOR	BLACK
07	RAILINGS - PARAPET	SUPERIOR	SANDSTONE
08	ALUMINIUM STOREFRONT	N/A	BLACK
09	COMPOSITE WINDOW	ANDERSEN	BLACK

