



666 Wisconsin Avenue  
Madison, WI 53703

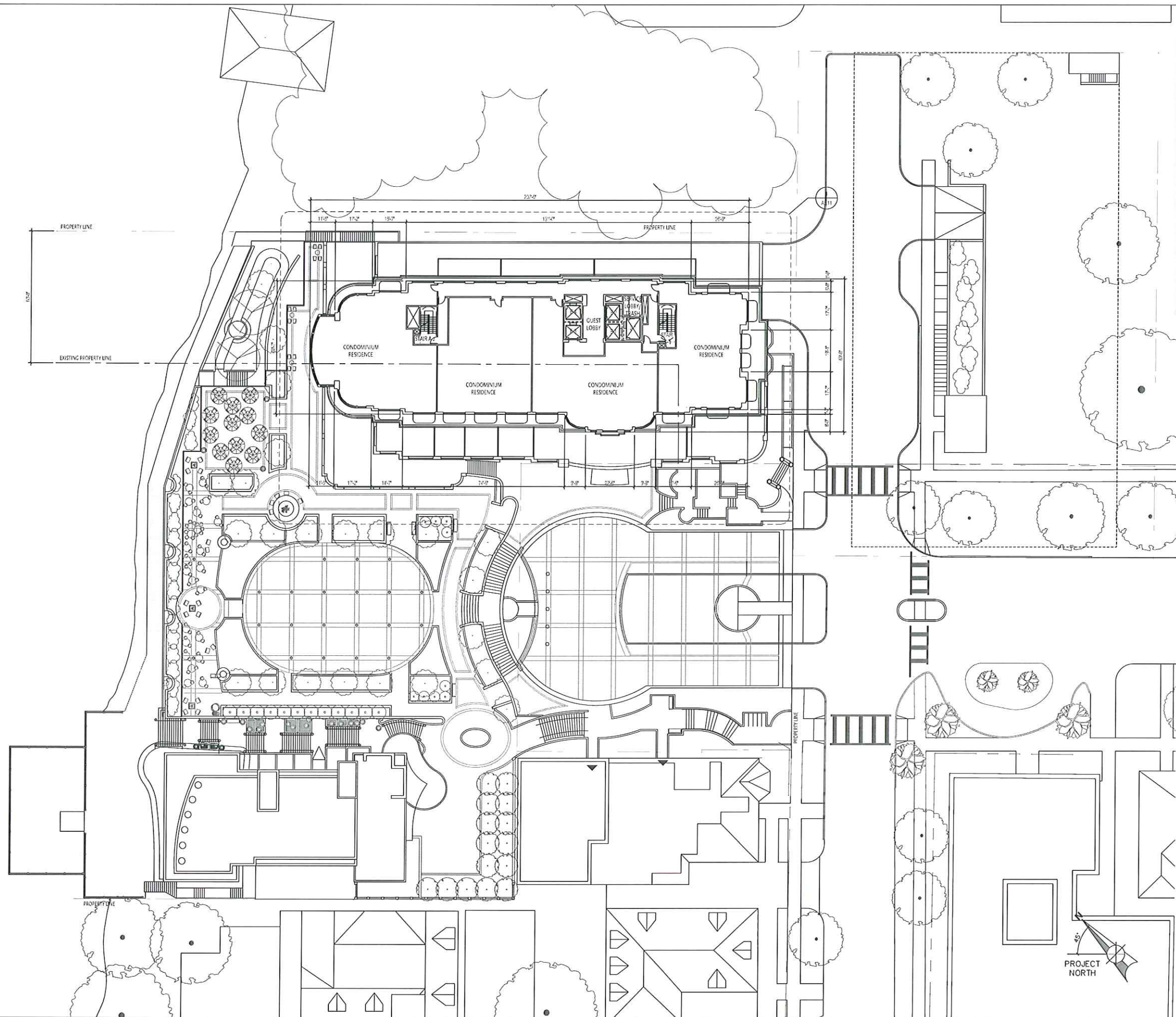
Owner:  
**Landmark X, LLC**  
22 East Millin Street, Suite 800  
Madison, WI 53703

Developer:  
**Hammes Company**  
22 East Millin Street, Suite 800  
Madison, WI 53703

Civil Engineer:  
**BT<sup>2</sup>, Inc.**  
2830 Dairy Drive  
Madison, WI 53718

Landscape Architect:  
**Ken Salik Design, Inc.**  
303 S. Patterson, Suite One  
Madison, WI 53703

Lighting Design:  
**KJJW Engineering Consultants**  
802 West Broadway, Suite 312  
Madison, WI 53713



PROJECT NUMBER: 08105.01

DATE: September 13, 2010

REVISIONS:

△	09/18/09
△	10/28/09
△	01/13/10
△	01/27/10
△	03/30/10
△	09/15/10

SCALE: 1" = 20'-0"

DRAWING NAME:  
**New Hotel Floors 7, 8**  
**Existing Edgewater Hotel**  
**Roof**

DRAWING NUMBER:

**A1.11**



PROJECT NUMBER: 08105.00

DATE: September 15, 2010

REVISIONS:

△	03/18/09
△	10/28/09
△	01/13/10
△	01/27/10
△	03/10/10
△	09/15/10

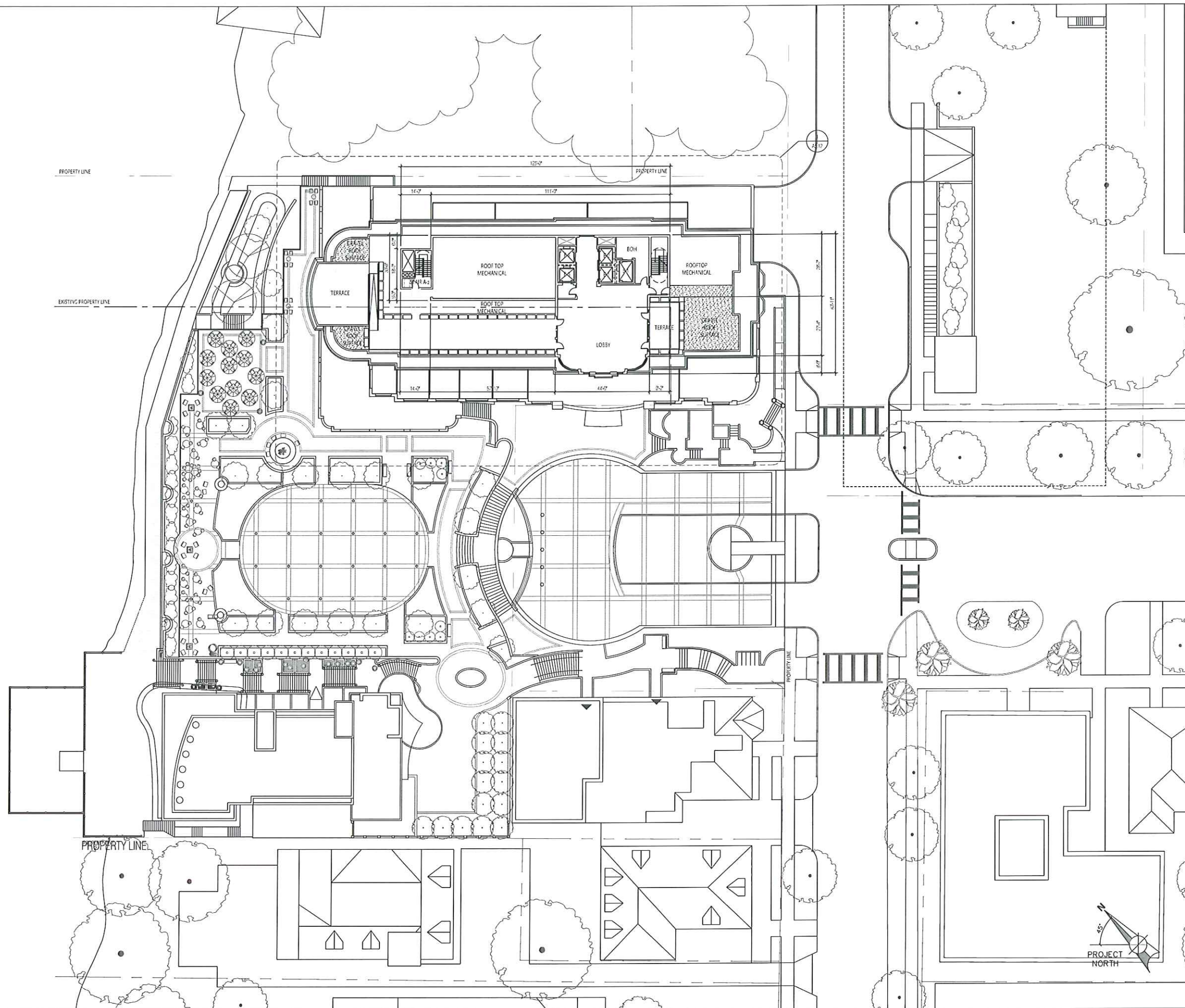
SCALE: 1" = 20'-0"

DRAWING NAME:  
**New Hotel Roof Plan**

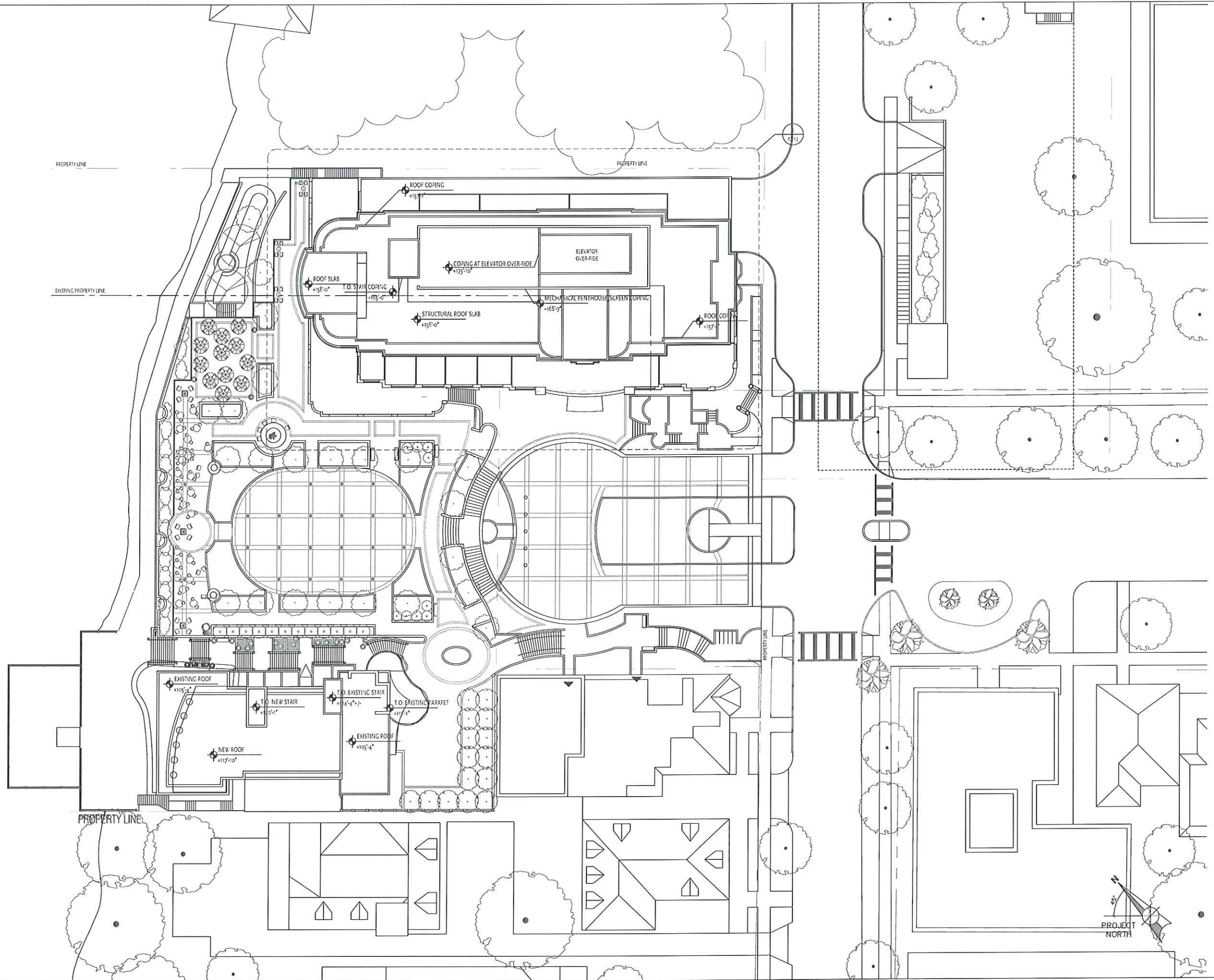
**Existing Edgewater Hotel  
Roof**

DRAWING NUMBER:

**A1.12**







ELKUS | MANFREDI  
ARCHITECTS

[Address] 300 A STREET  
BOSTON MASSACHUSETTS 02210  
[T] 617-426-1300



666 Wisconsin Avenue  
Madison, WI 53703

Owner:  
**Landmark X, LLC**  
22 East Millin Street, Suite 600  
Madison, WI 53703

Developer:  
**Hammes Company**  
22 East Millin Street, Suite 600  
Madison, WI 53703

Civil Engineer:  
**BT<sup>2</sup>, Inc.**  
2830 Daly Drive  
Madison, WI 53718

Landscape Architect:  
**Ken Sald Design, Inc.**  
303 S. Patterson, Suite One  
Madison, WI 53703

Lighting Design:  
**KJJW Engineering Consultants**  
802 West Broadway, Suite 312  
Madison, WI 53713

PROJECT NUMBER: 06106.00

DATE: September 15, 2010

REVISIONS:

△	03/18/09
△	10/28/09
△	01/13/10
△	01/27/10
△	03/10/10
△	09/15/10

SCALE: 1" = 20'-0"

DRAWING NAME:

**New Hotel Roof Plan**

Existing Edgewater Hotel  
Roof

DRAWING NUMBER:

**A1.13**



666 Wisconsin Avenue  
Madison, WI 53703

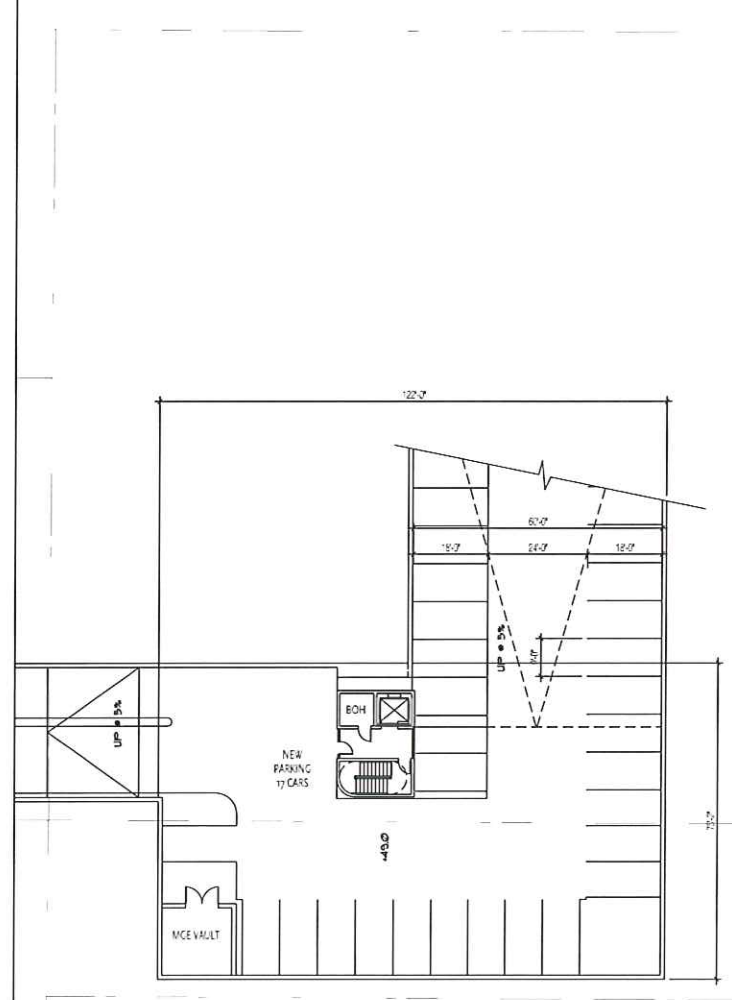
Owner:  
**Landmark X, LLC**  
22 East Mifflin Street, Suite 600  
Madison, WI 53703

Developer:  
**Hammes Company**  
22 East Mifflin Street, Suite 600  
Madison, WI 53703

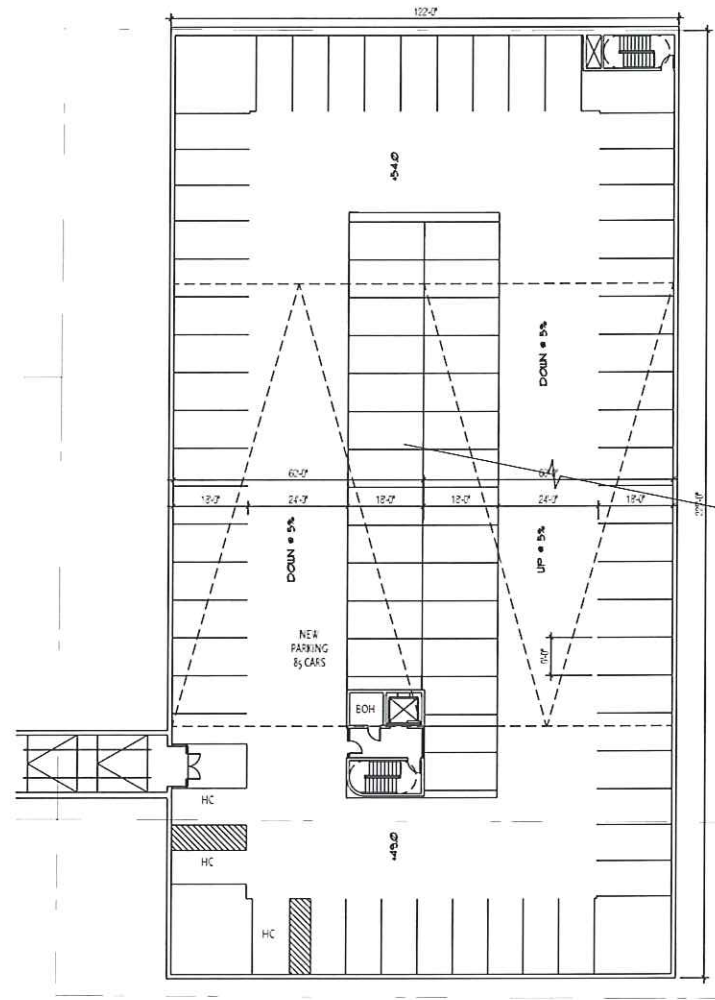
Civil Engineer:  
**BT<sup>2</sup>, Inc.**  
2830 Dairy Drive  
Madison, WI 53718

Landscape Architect:  
**Ken Sald Design, Inc.**  
333 S. Patterson, Suite One  
Madison, WI 53703

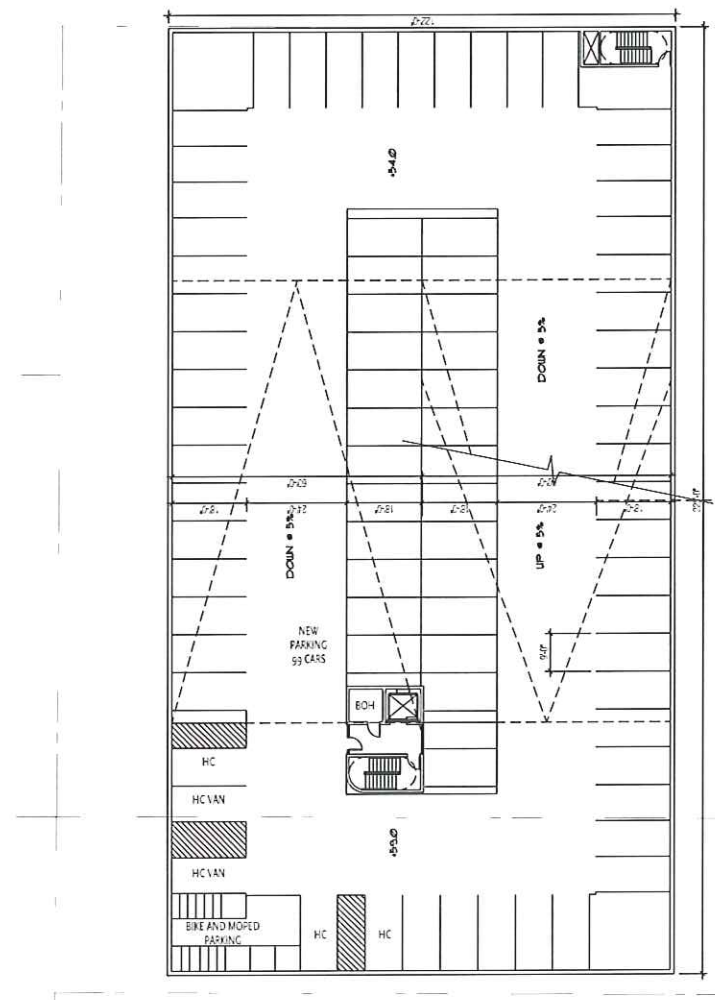
Lighting Design:  
**KJJW Engineering Consultants**  
802 West Broadway, Suite 312  
Madison, WI 53713



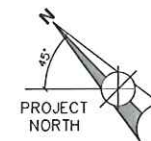
**1** Parking Level Plan at Lower Level 3  
SCALE: 1"=20'-0"



**2** Parking Level Plan at Lower Level 2  
SCALE: 1"=20'-0"



**3** Parking Level Plan at Lower Level 1  
SCALE: 1"=20'-0"



PROJECT NUMBER: 06156.00

DATE: September 15, 2013

REVISIONS:

△	03/10/10
△	09/15/10

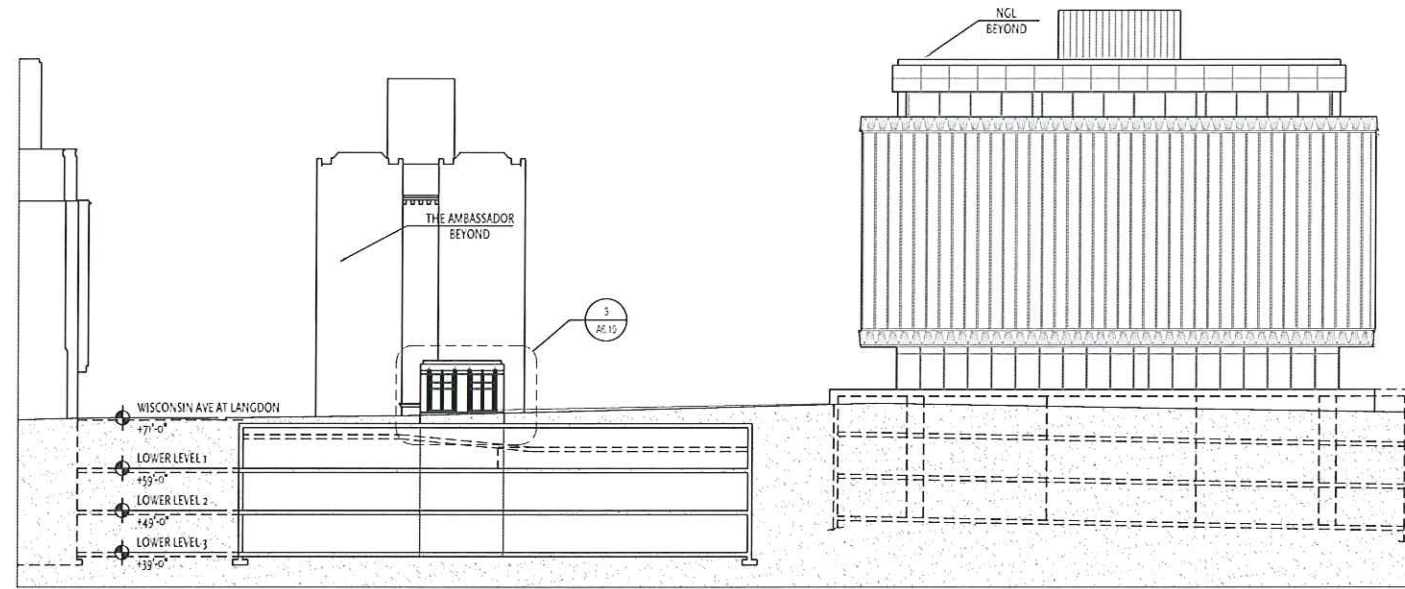
SCALE: 1"=20'-0"

DRAWING NAME:  
Parking Plans

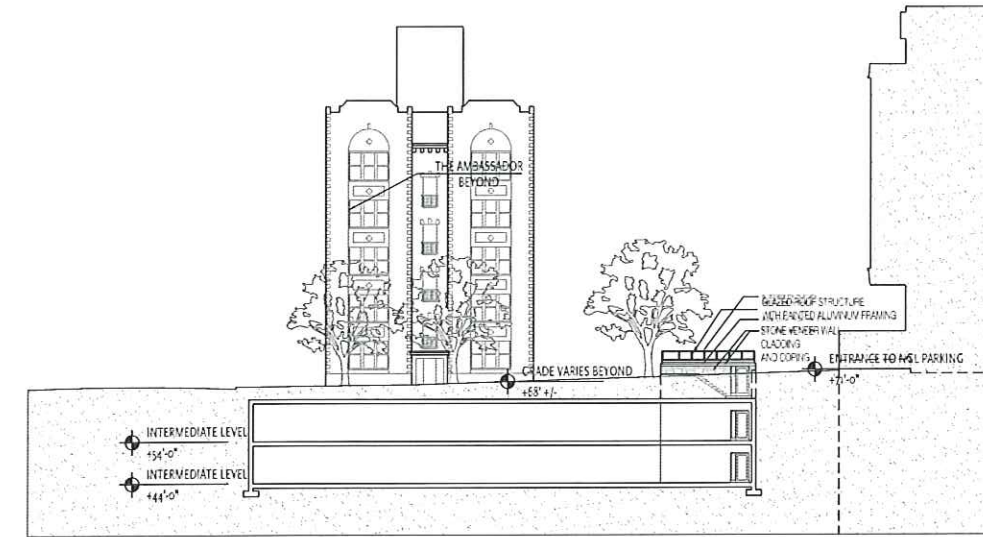
DRAWING NUMBER:

**A1.14**

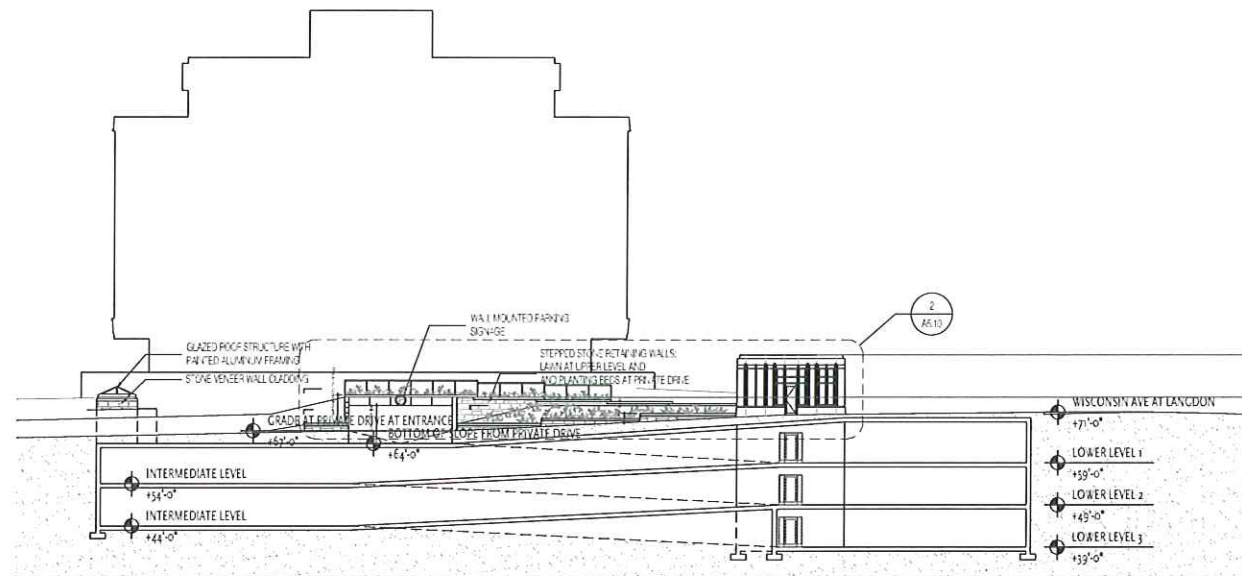




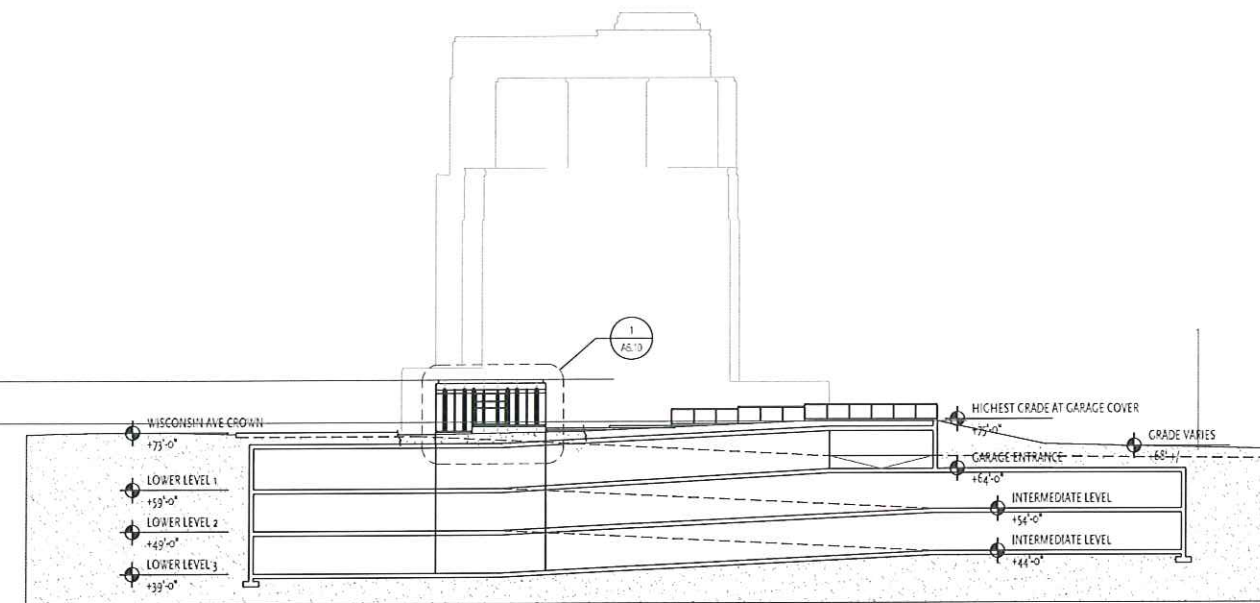
**1** Cross Section at Wisconsin Avenue Right of Way  
SCALE: 1"=20'-0"



**2** Cross Section Facing The Ambassador  
SCALE: 1"=20'-0"



**3** Cross Section Facing NGL Building  
SCALE: 1"=20'-0"



**4** Cross Section Facing New Edgewater Hotel  
SCALE: 1"=20'-0"

PROJECT NUMBER: 08105.00

DATE: September 15, 2010

REVISIONS:	
△	03/10/10
△	09/15/10

SCALE: 1"= 20'-0"

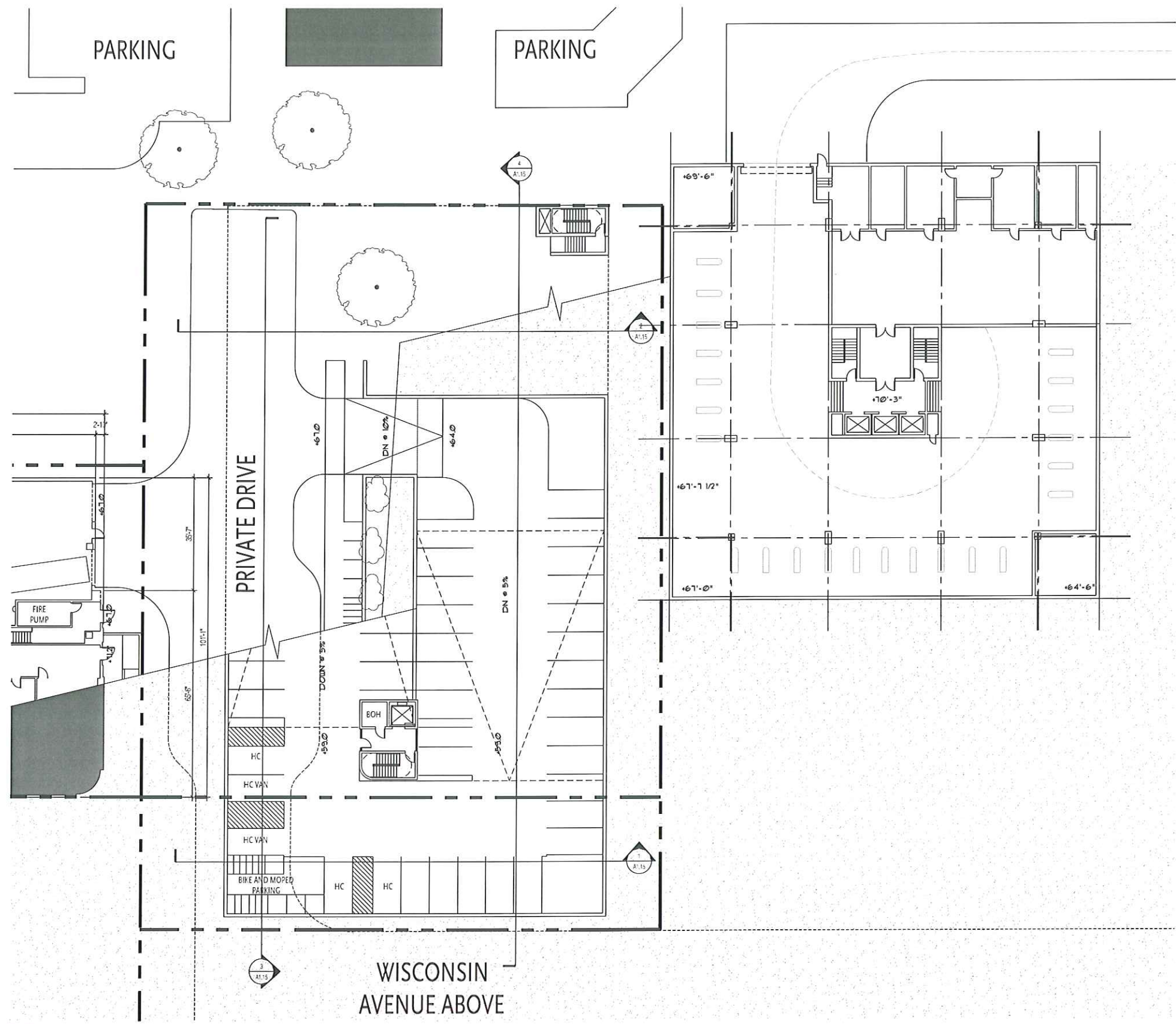
DRAWING NAME:

Sections, and Partial  
Elevations of Parking  
at Entrance

DRAWING NUMBER:

**A1.15**





**1** Parking Level Plan at Entrance Level  
SCALE: 1/8"=1'-0"



ELKUS | MANFREDI  
ARCHITECTS

[Address] 300 A STREET  
BOSTON MASSACHUSETTS 02210  
[P] 617-426-1300

*The Edgewater*

666 Wisconsin Avenue  
Madison, WI 53703

Owner:  
**Landmark X, LLC**  
22 East Mifflin Street, Suite 600  
Madison, WI 53703

Developer:  
**Hammes Company**  
22 East Mifflin Street, Suite 600  
Madison, WI 53703

Civil Engineer:  
**BT<sup>2</sup>, Inc.**  
2830 Dairy Drive  
Madison, WI 53718

Landscape Architect:  
**Ken Salki Design, Inc.**  
303 S. Patterson, Suite One  
Madison, WI 53703

Lighting Design:  
**KJW Engineering Consultants**  
602 West Broadway, Suite 312  
Madison, WI 53713

PROJECT NUMBER: 08105.00

DATE: September 15, 2010

REVISIONS:  

△	03/10/10
△	09/15/10

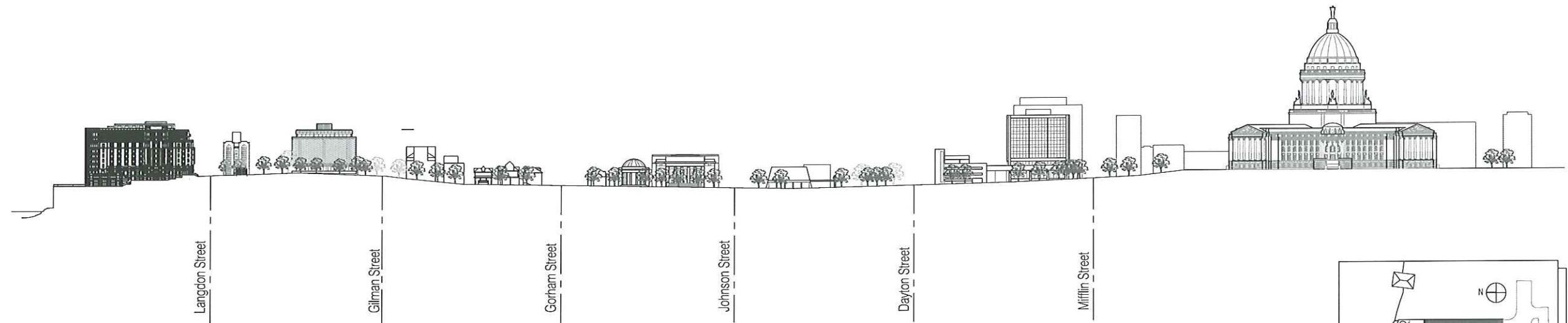
SCALE: 1/16"=1'-0"

DRAWING NAME:  
**Parking Plan at Entrance**

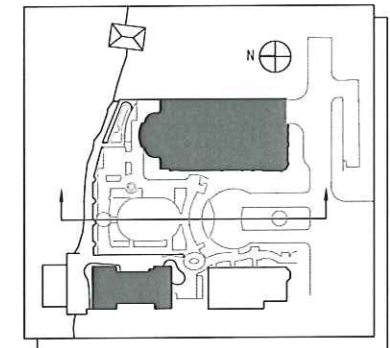
DRAWING NUMBER:

**A1.16**

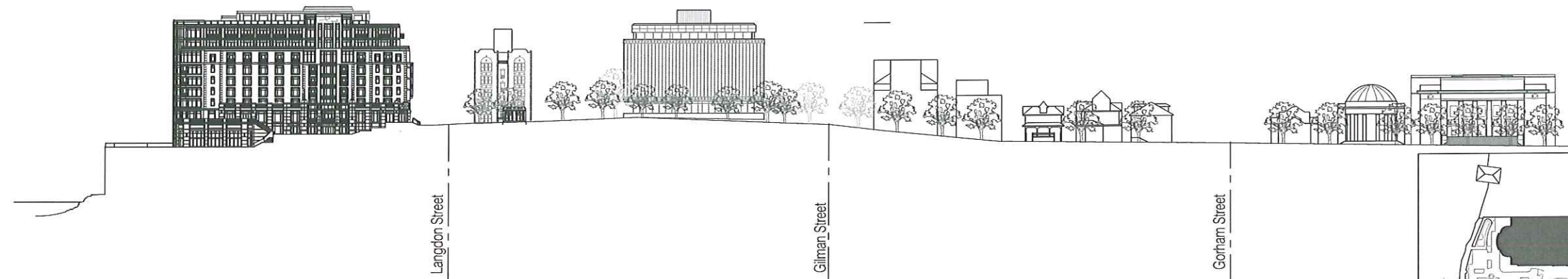




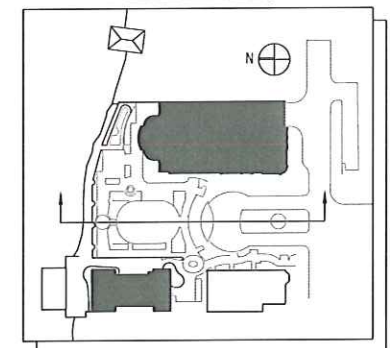
**2** Elevation of New Hotel at Plaza along Wisconsin Avenue to State Capitol  
SCALE: 1"=100'-0"



Plan Diagram



**1** Elevation of New Hotel at Plaza along Wisconsin Avenue  
SCALE: 1"=50'-0"



Plan Diagram

PROJECT NUMBER: 08126.00

DATE: September 15, 2010

REVISIONS:

△	03/10/10
△	09/15/10

SCALE: As Noted

DRAWING NAME:

Context Elevations

DRAWING NUMBER:

**A2.00**



666 Wisconsin Avenue  
Madison, WI 53703

Owner:  
**Landmark X, LLC**  
22 East Mifflin Street, Suite 600  
Madison, WI 53703

Developer:  
**Hammes Company**  
22 East Mifflin Street, Suite 600  
Madison, WI 53703

Civil Engineer:  
**BT<sup>2</sup>, Inc.**  
2830 Dairy Drive  
Madison, WI 53718

Landscape Architect:  
**Ken Salk Design, Inc.**  
303 S. Patterson, Suite One  
Madison, WI 53703

Lighting Design:  
**KJW Engineering Consultants**  
802 West Broadway, Suite 312  
Madison, WI 53713

PROJECT NUMBER: 08105.00

DATE: September 15, 2010

REVISIONS:

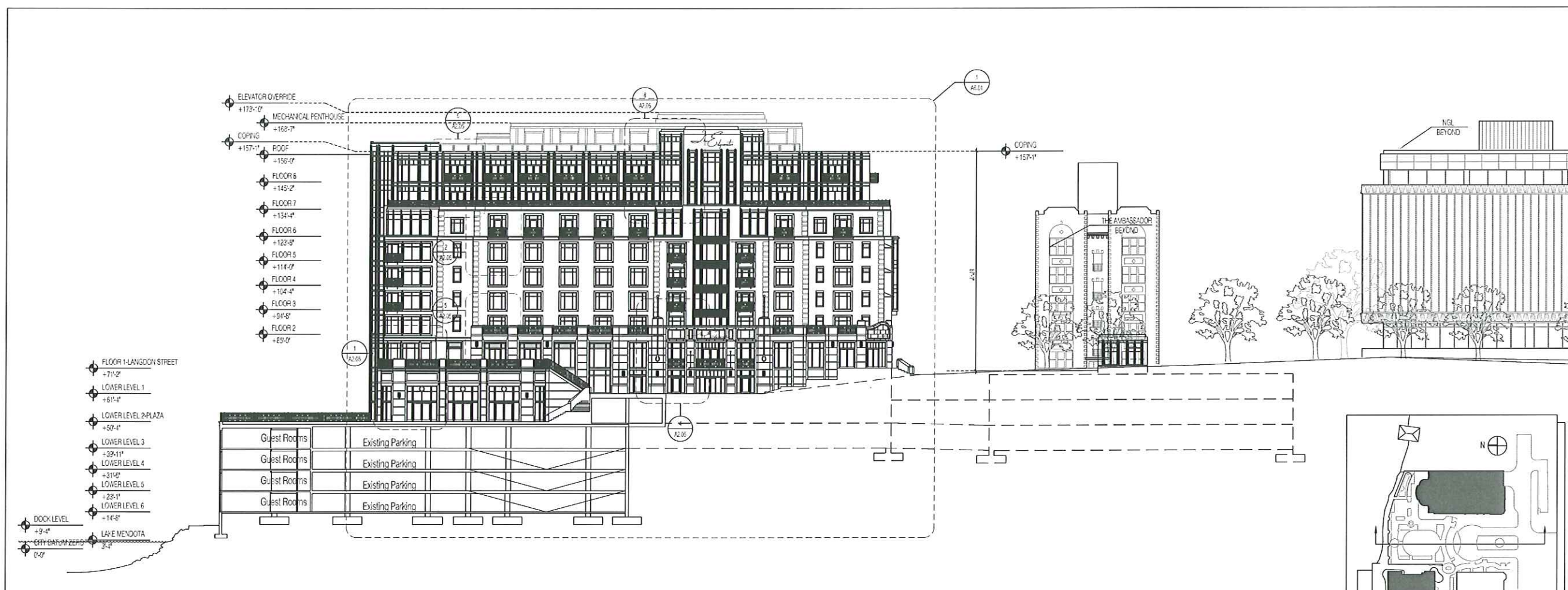
▲	03/18/09
▲	10/28/09
▲	01/13/10
▲	01/27/10
▲	03/10/10
▲	09/15/10

SCALE: 1" = 20'-0"

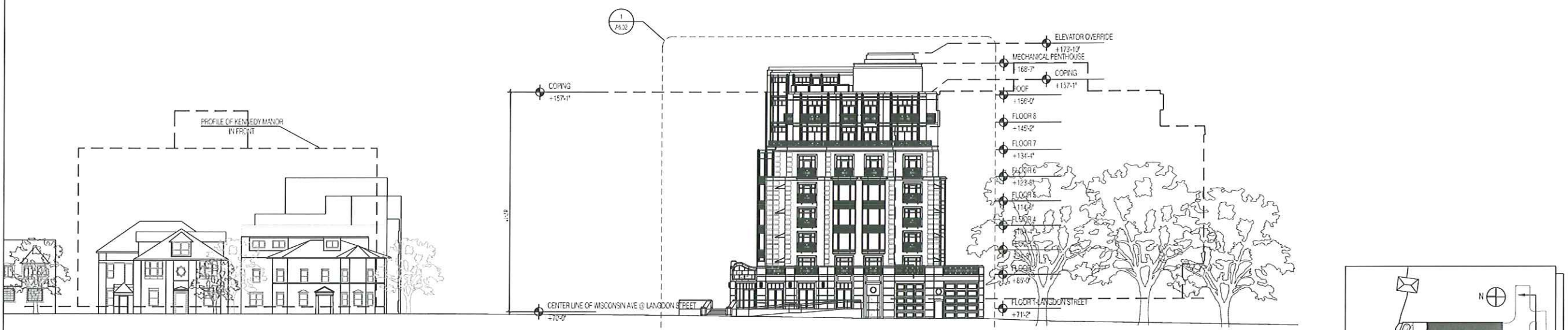
DRAWING NAME:  
**Elevations**

DRAWING NUMBER:

**A2.01**



**2 Section and Elevation of New Hotel at Plaza**  
SCALE: 1/4"=2'-0"



**1 Langdon Street Elevation**  
SCALE: 1/4"=3'-0"





666 Wisconsin Avenue  
Madison, WI 53703

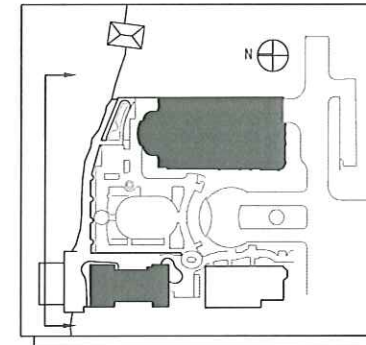
Owner:  
**Landmark X, LLC**  
22 East Mifflin Street, Suite 600  
Madison, WI 53703

Developer:  
**Hammes Company**  
22 East Mifflin Street, Suite 600  
Madison, WI 53703

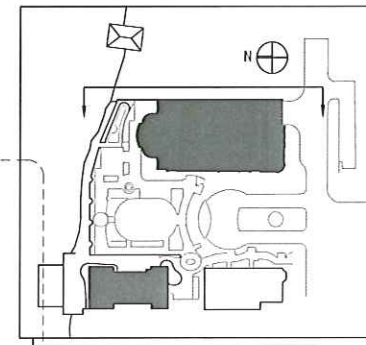
Civil Engineer:  
**BT<sup>2</sup>, Inc.**  
2830 Dairy Drive  
Madison, WI 53718

Landscape Architect:  
**Ken Salki Design, Inc.**  
303 S. Patterson, Suite One  
Madison, WI 53703

Lighting Design:  
**KJW Engineering Consultants**  
802 West Broadway, Suite 312  
Madison, WI 53713



Plan Diagram



Plan Diagram

PROJECT NUMBER: 08105.00

DATE: September 15, 2012

REVISIONS:

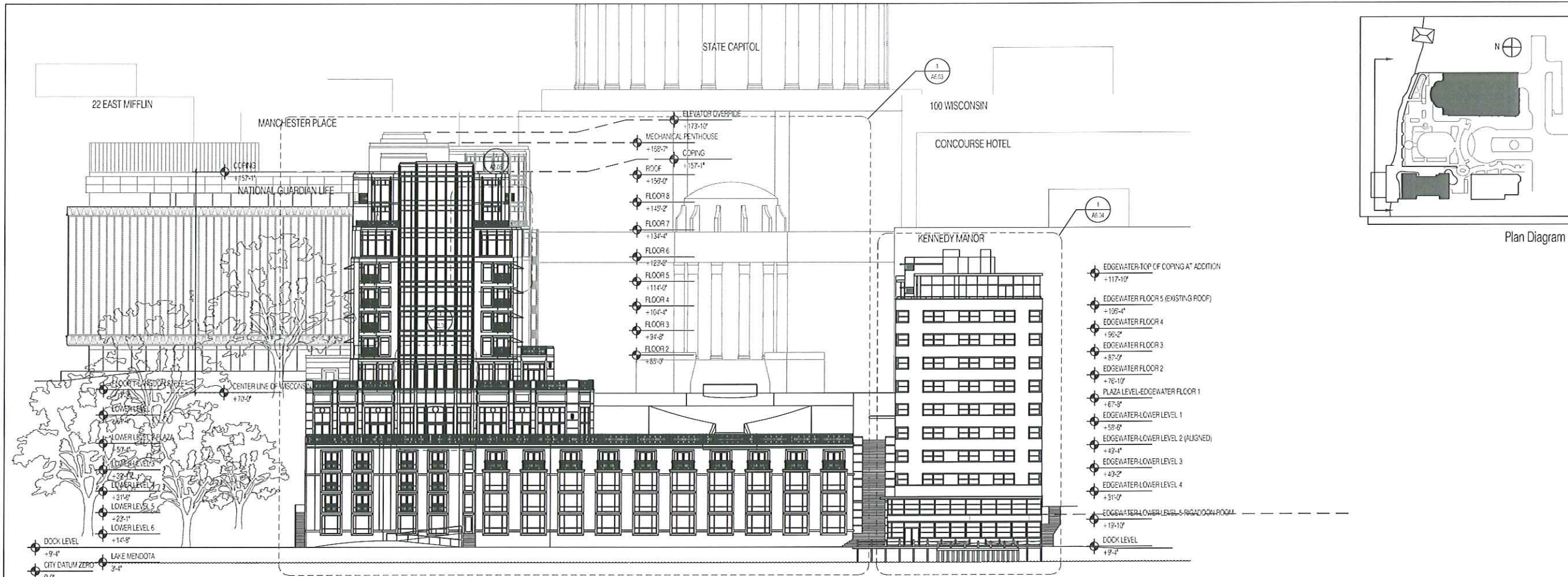
△	08/18/09
△	10/28/09
△	01/13/10
△	01/27/10
△	03/10/10
△	09/15/10

SCALE: 1" = 20'-0"

DRAWING NAME:  
**Elevations**

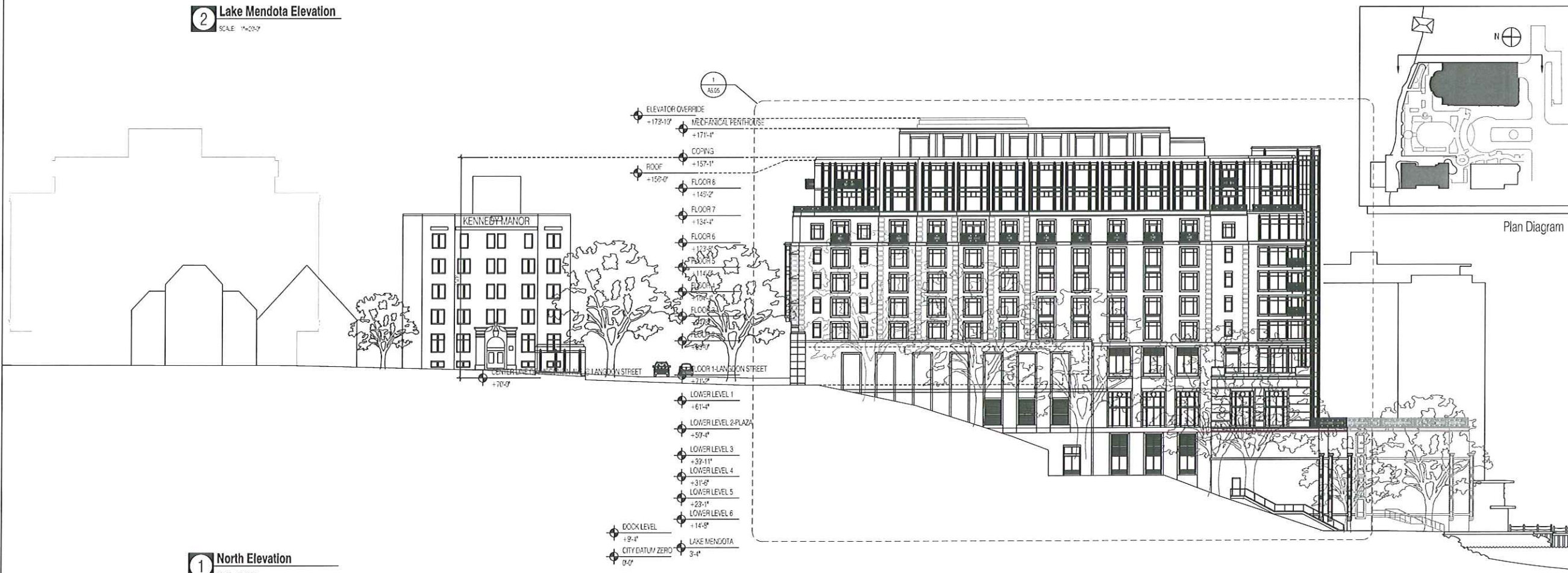
DRAWING NUMBER:

**A2.02**



**2** Lake Mendota Elevation

SCALE: 1"=20'-0"

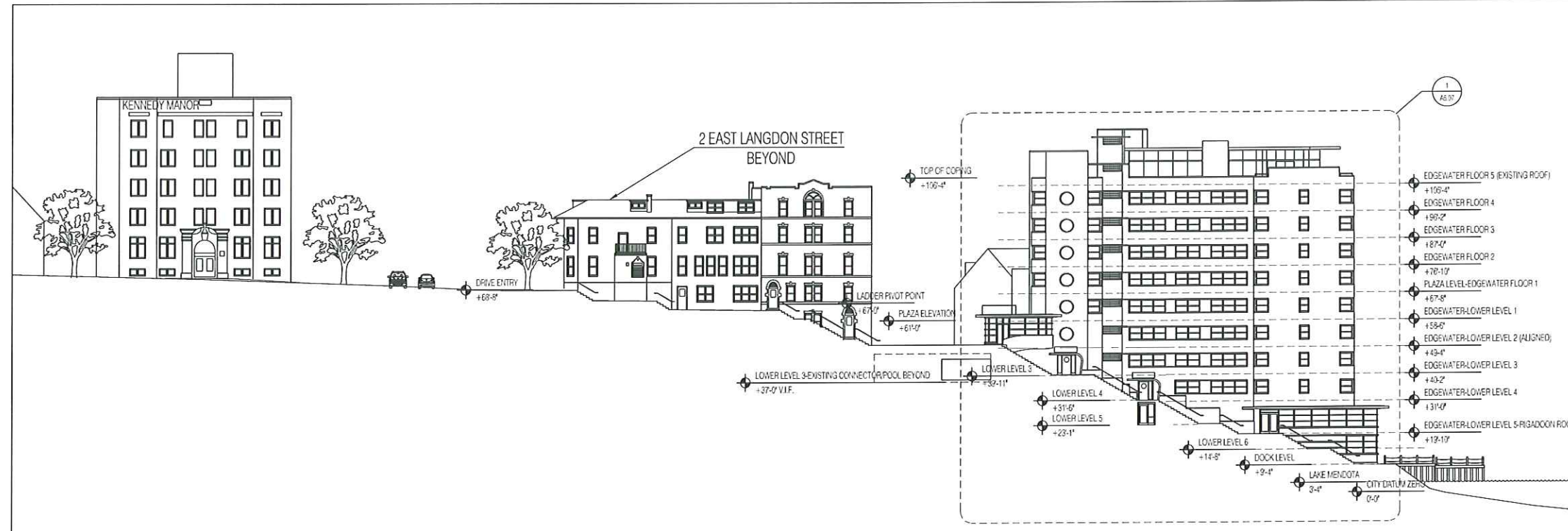


**1** North Elevation

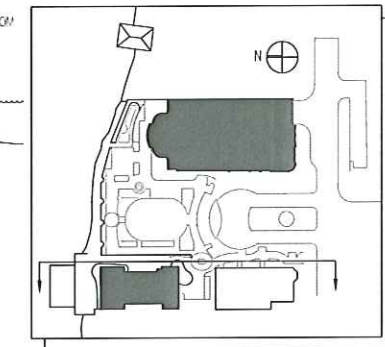
SCALE: 1"=20'-0"



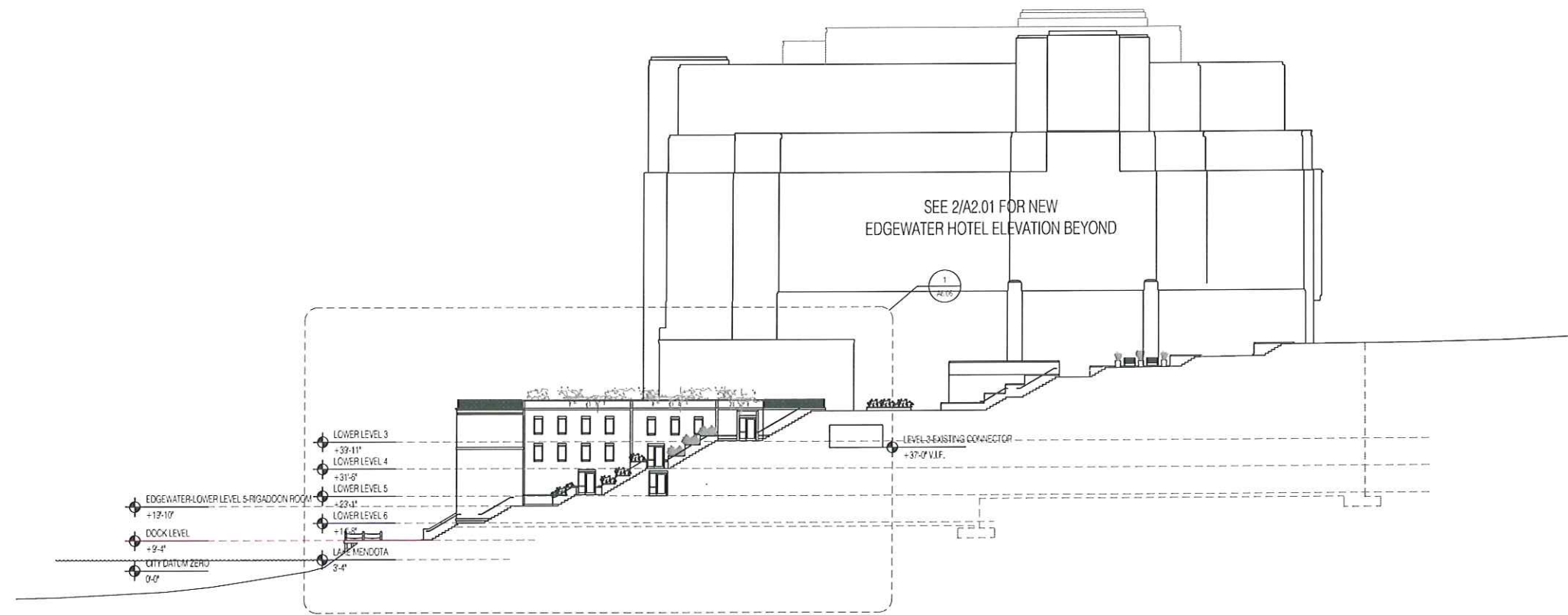
△	03/18/09
△	10/23/09
△	01/13/10
△	03/10/10
△	09/15/10



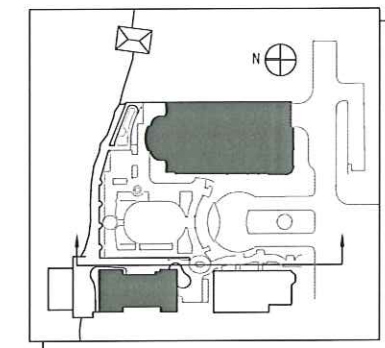
**2** Section and Elevation through Stair - Looking West towards Existing Edgewater  
SCALE: 1"=20'-0"



Plan Diagram

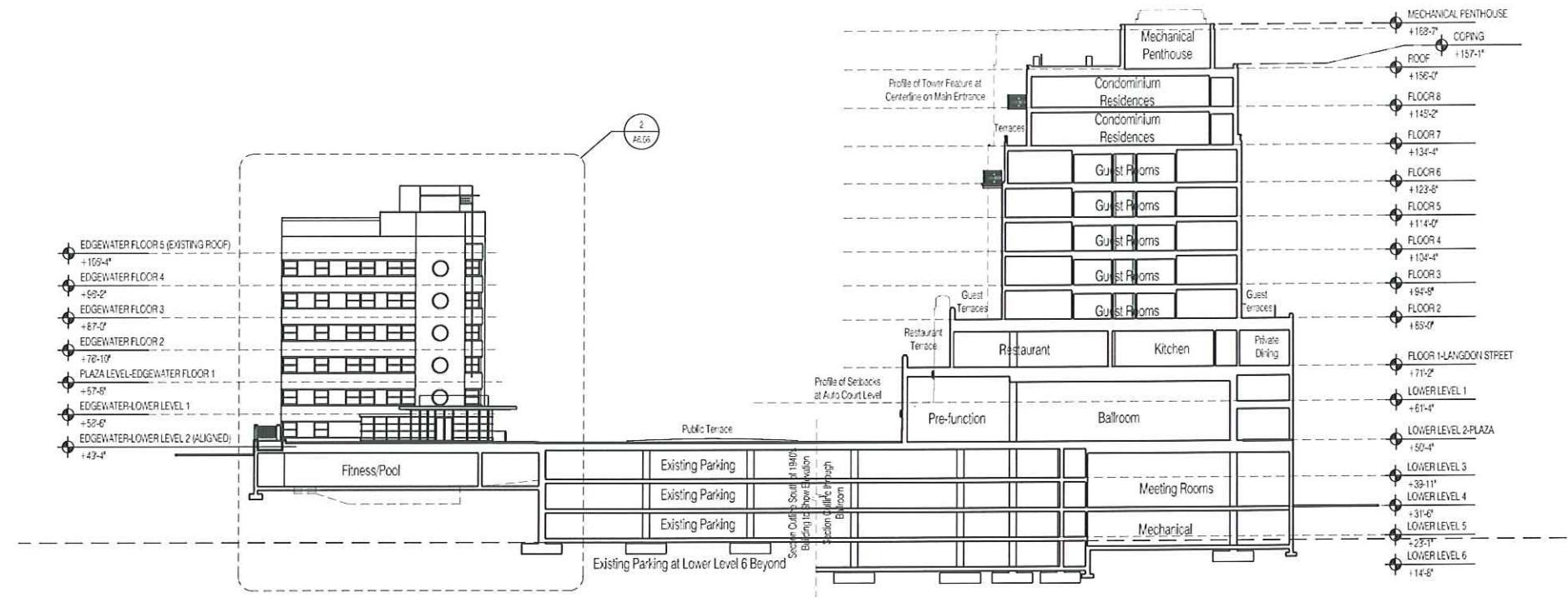


**1** Section and Elevation Through Stair - Looking East  
SCALE: 1"=20'-0"

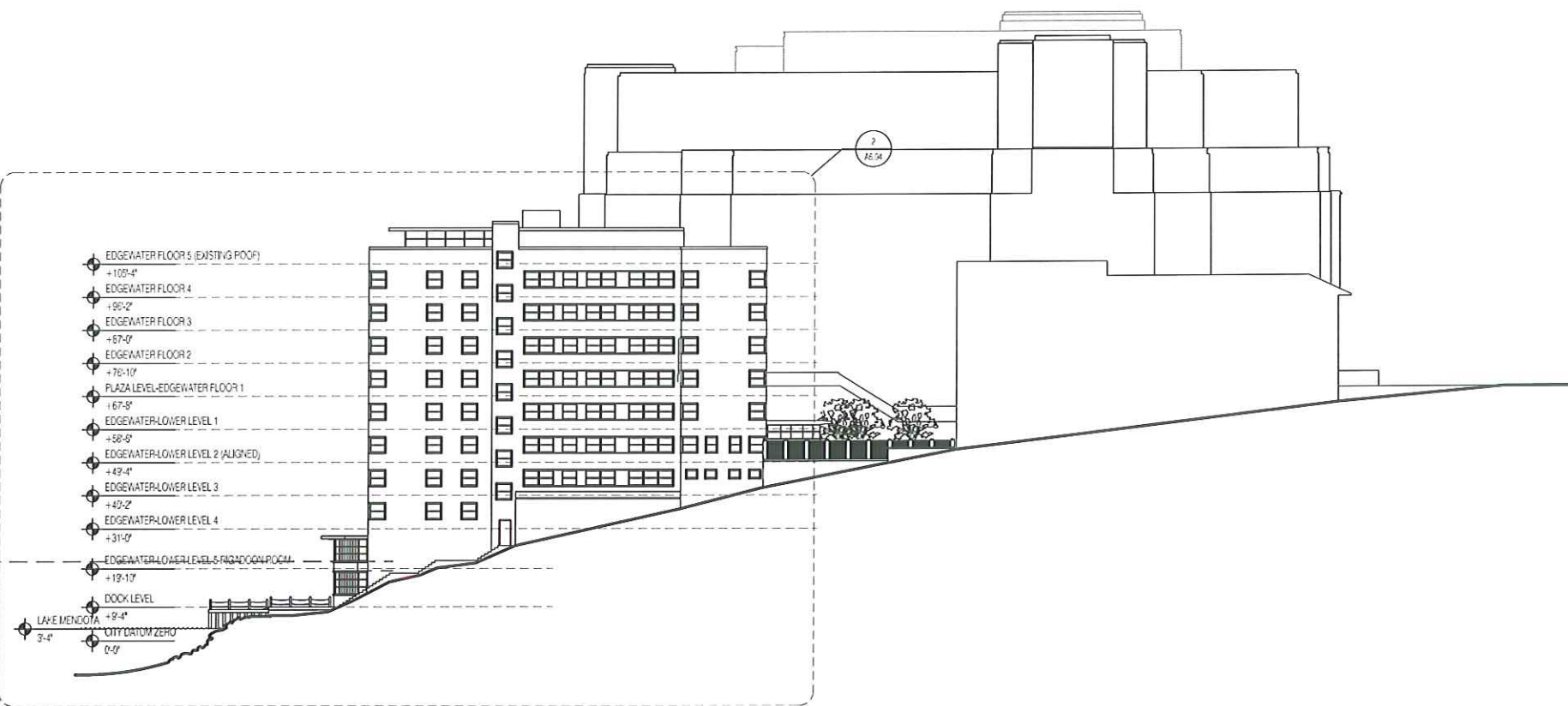


Plan Diagram

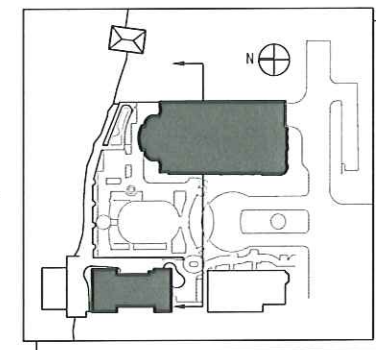




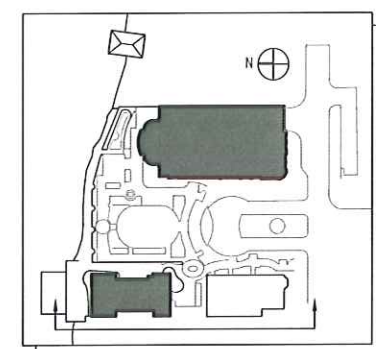
**2** Section Through New Hotel and South Elevation of Existing Edgewater Hotel  
SCALE: 1"=20'-0"



**1** West Elevation of Existing Edgewater Hotel  
SCALE: 1"=20'-0"



Plan Diagram



Plan Diagram

PROJECT NUMBER: 08126.00

DATE: September 15, 2010

REVISIONS:	
△	08/18/09
△	10/23/09
△	01/13/10
△	03/10/10
△	09/15/10

SCALE: 1"= 20'-0"

DRAWING NAME:  
**Elevations and Sections**

DRAWING NUMBER:

**A2.04**





**5 Dining Terrace with Guest Rooms Above**  
SCALE: SCALE: 1/4"=1'-0"



**6 Condominium Levels**  
SCALE: SCALE: 1/4"=1'-0"



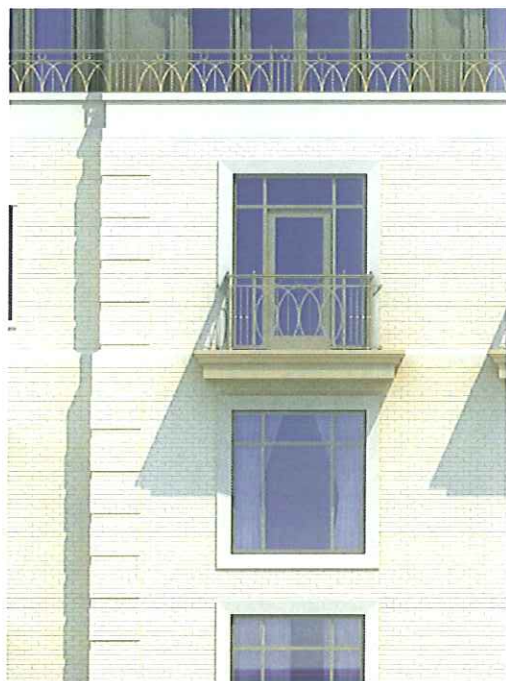
**7 Building Setbacks at Lake Elevation at Upper Levels**  
SCALE: SCALE: 1/4"=1'-0"



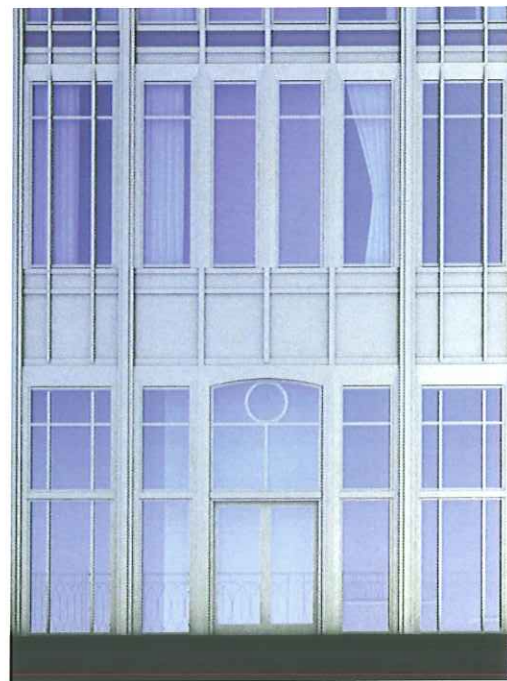
**8 Entrance Tower Elevation including Penthouse Screening**  
SCALE: SCALE: 1/4"=1'-0"



**1 Base Elevation at Ballroom**  
SCALE: SCALE: 1/4"=1'-0"



**2 Hotel Fenestration Detail with Brick Quoin Detail**  
SCALE: SCALE: 1/4"=1'-0"



**3 Base of Tower Detail of Ballroom at Public Terrace**  
SCALE: SCALE: 1/4"=1'-0"



**4 Main Building Entrance at Auto Court**  
SCALE: SCALE: 1/4"=1'-0"

PROJECT NUMBER: 03128.00

DATE: September 15, 2010

REVISIONS:

△	03/10/10
△	09/15/10

SCALE: As Noted

DRAWING NAME:

Building Elevation  
Details Demonstrating  
Material Relationships,  
Window Walls, and  
Relief Patterns

DRAWING NUMBER:

**A2.05**





666 Wisconsin Avenue  
Madison, WI 53703

Owner:  
**Landmark X, LLC**  
22 East Millin Street, Suite 800  
Madison, WI 53703

Developer:  
**Hammes Company**  
22 East Millin Street, Suite 800  
Madison, WI 53703

Civil Engineer:  
**BT<sup>2</sup>, Inc.**  
2830 Dairy Drive  
Madison, WI 53718

Landscape Architect:  
**Ken Salki Design, Inc.**  
303 S. Paterson, Suite One  
Madison, WI 53703

Lighting Design:  
**KJJW Engineering Consultants**  
602 West Broadway, Suite 312  
Madison, WI 53713



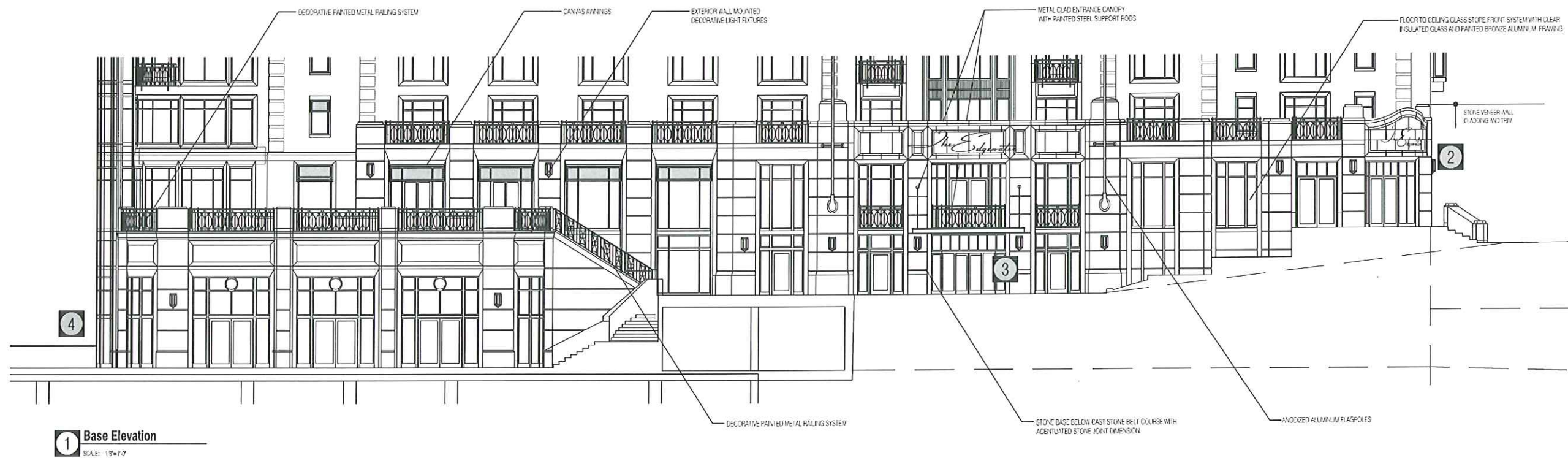
**2** Building Entrance at Langdon Street  
SCALE: NTS



**3** Main Building Entrance at Auto Court  
SCALE: NTS



**4** Terrace View toward Ballroom and Pre-Function  
SCALE: NTS



**1** Base Elevation  
SCALE: 1/8" = 1'-0"

PROJECT NUMBER: 01/06.00

DATE: September 15, 2010

REVISIONS:

△	03/10/10
△	09/15/10

SCALE: 1/8" = 1'-0"

DRAWING NAME:

**Building Base Elevation**

DRAWING NUMBER:

**A2.06**





666 Wisconsin Avenue  
Madison, WI 53703

Owner:  
**Landmark X, LLC**  
22 East Millin Street, Suite 600  
Madison, WI 53703

Developer:  
**Hammes Company**  
22 East Millin Street, Suite 600  
Madison, WI 53703

Civil Engineer:  
**BT<sup>2</sup>, Inc.**  
2830 Dairy Drive  
Madison, WI 53718

Landscape Architect:  
**Ken Salki Design, Inc.**  
303 S. Patterson, Suite One  
Madison, WI 53703

Lighting Design:  
**KJJW Engineering Consultants**  
602 West Broadway, Suite 312  
Madison, WI 53713



**2** Awnings and Painted Metal Details  
SCALE: NTS



**3** Quoin Detail References of Surrounding Buildings  
SCALE: NTS



**4** Building Setbacks and Ornamental Rail Details  
SCALE: NTS



**5** Bay Windows Break Plane of Wall and Provide Depth  
SCALE: NTS



**1** Middle Elevation  
SCALE: 1/8" = 1'-0"

PROJECT NUMBER: 08105.00

DATE: September 15, 2010

REVISIONS:

△	01/27/10
△	03/10/10
△	09/15/10

SCALE: 1/8" = 1'-0"

DRAWING NAME:  
**Building Middle Elevation**

DRAWING NUMBER:

**A2.07**





2 Architectural Character of Upper Floors Facing Lake Mendota

SCALE: NTS



3 Architectural Character of Upper Floors Facing Southwest

SCALE: NTS



1 Top Elevation

SCALE: 1/8" = 1'-0"

ELKUS | MANFREDI ARCHITECTS

300 A STREET  
BOSTON MASSACHUSETTS 02210  
[t] 617-426-1300

*The Edgewater*

666 Wisconsin Avenue  
Madison, WI 53703

Owner:  
**Landmark X, LLC**  
22 East Millin Street, Suite 600  
Madison, WI 53703

Developer:  
**Hammes Company**  
22 East Millin Street, Suite 600  
Madison, WI 53703

Civil Engineer:  
**BT<sup>2</sup>, Inc.**  
2830 Dairy Drive  
Madison, WI 53718

Landscape Architect:  
**Ken Salki Design, Inc.**  
303 S. Patterson, Suite One  
Madison, WI 53703

Lighting Design:  
**KJJW Engineering Consultants**  
602 West Broadway, Suite 312  
Madison, WI 53713

PROJECT NUMBER: 06126.00

DATE: September 15, 2010

REVISIONS:

△	01/27/10
△	03/10/10
△	09/15/10

SCALE: 1/8" = 1'-0"

DRAWING NAME:  
**Building Top Elevation**

DRAWING NUMBER:

**A2.08**





666 Wisconsin Avenue  
Madison, WI 53703

Owner:  
**Landmark X, LLC**  
22 East Millin Street, Suite 600  
Madison, WI 53703

Developer:  
**Hammes Company**  
22 East Millin Street, Suite 600  
Madison, WI 53703

Civil Engineer:  
**BT<sup>2</sup>, Inc.**  
2830 Dairy Drive  
Madison, WI 53718

Landscape Architect:  
**Ken Salki Design, Inc.**  
303 S. Patterson, Suite One  
Madison, WI 53703

Lighting Design:  
**KJJW Engineering Consultants**  
602 West Broadway, Suite 312  
Madison, WI 53713

PROJECT NUMBER: 04126.00

DATE: September 15, 2010

REVISIONS:  
△ 03/10/10  
△ 09/15/10

SCALE: 3/64"=1'-0"

DRAWING NAME:  
**West Elevation  
Color Rendering**

DRAWING NUMBER:

**A2.10**







666 Wisconsin Avenue  
Madison, WI 53703

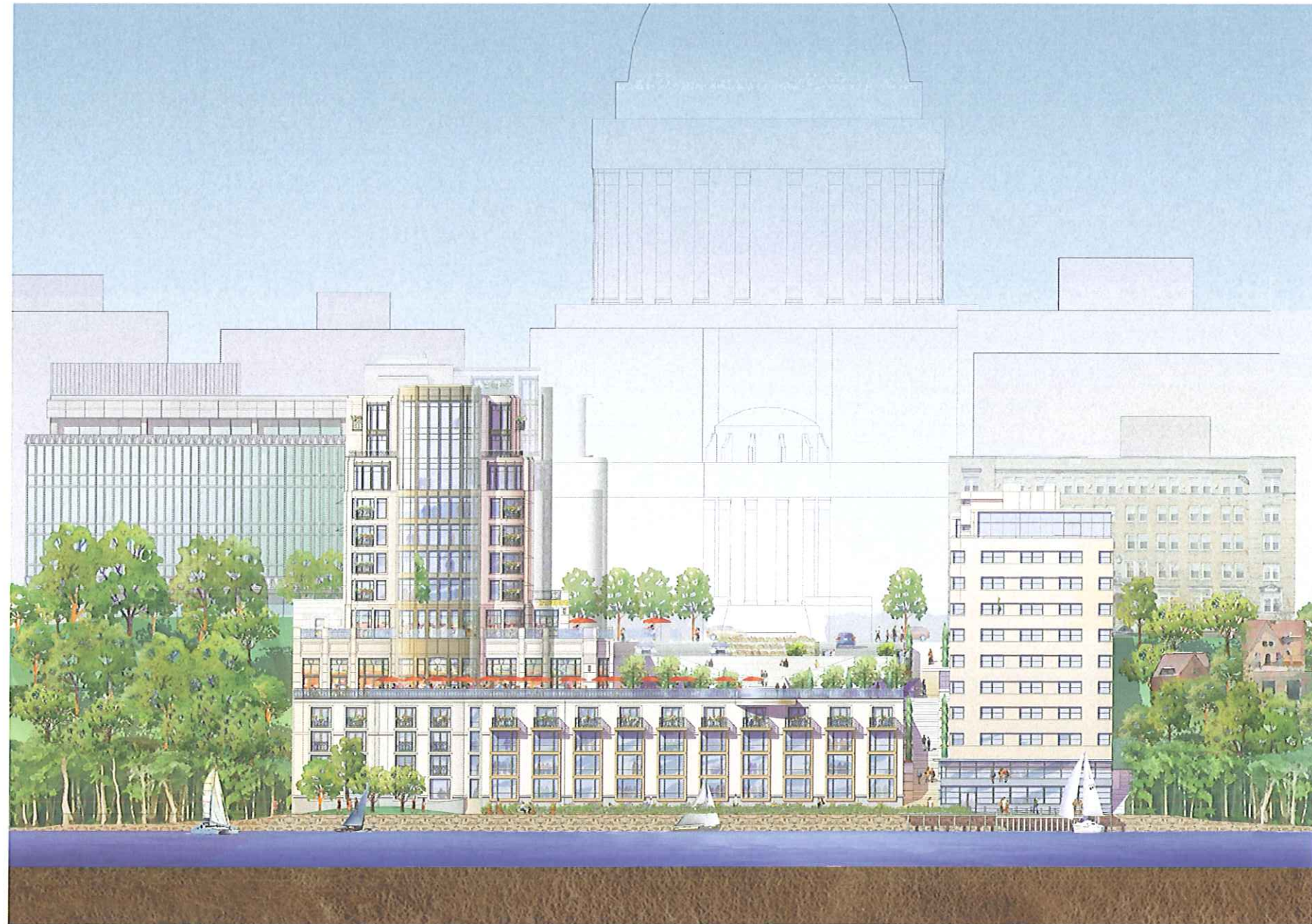
Owner:  
**Landmark X, LLC**  
22 East Millin Street, Suite 800  
Madison, WI 53703

Developer:  
**Hammes Company**  
22 East Millin Street, Suite 800  
Madison, WI 53703

Civil Engineer:  
**BT<sup>2</sup>, Inc.**  
2830 Dairy Drive  
Madison, WI 53718

Landscape Architect:  
**Ken Saki Design, Inc.**  
303 S. Patterson, Suite One  
Madison, WI 53703

Lighting Design:  
**KJJW Engineering Consultants**  
602 West Broadway, Suite 312  
Madison, WI 53713



PROJECT NUMBER: 08105.00

DATE: September 15, 2010

REVISIONS:	
△	03/10/10
△	09/15/10

SCALE: 3/64" = 1'-0"

DRAWING NAME:  
**North Elevation  
Color Rendering**

DRAWING NUMBER:

**A2.11**

1 North Elevation Color Rendering (Lake Mendota Elevation)  
SCALE: 3/64"=1'-0"





666 Wisconsin Avenue  
Madison, WI 53703

Owner:  
**Landmark X, LLC**  
22 East Mifflin Street, Suite 600  
Madison, WI 53703

Developer:  
**Hammes Company**  
22 East Mifflin Street, Suite 600  
Madison, WI 53703

Civil Engineer:  
**BT<sup>2</sup>, Inc.**  
2830 Dairy Drive  
Madison, WI 53718

Landscape Architect:  
**Ken Salki Design, Inc.**  
303 S. Patterson, Suite One  
Madison, WI 53703

Lighting Design:  
**KJJW Engineering Consultants**  
602 West Broadway, Suite 312  
Madison, WI 53713

PROJECT NUMBER: 09126.00

DATE: September 15, 2010

REVISIONS:	
△	03/10/10
△	09/15/10

SCALE: 3/64" = 1'-0"

DRAWING NAME:  
East Elevation  
Color Rendering

DRAWING NUMBER:

A2.13







**1** View From Lake Mendota  
SCALE: NTS

ELKUS | MANFREDI  
ARCHITECTS

[Address] 300 A STREET  
BOSTON MASSACHUSETTS 02110  
[Phone] 617-426-1300

*The Edgewater*

666 Wisconsin Avenue  
Madison, WI 53703

Owner:  
**Landmark X, LLC**  
22 East Mifflin Street, Suite 800  
Madison, WI 53703

Developer:  
**Hammes Company**  
22 East Mifflin Street, Suite 800  
Madison, WI 53703

Civil Engineer:  
**BT<sup>2</sup>, Inc.**  
2630 Dairy Drive  
Madison, WI 53718

Landscape Architect:  
**Ken Salki Design, Inc.**  
303 S. Patterson, Suite One  
Madison, WI 53703

Lighting Design:  
**KJW Engineering Consultants**  
802 West Broadway, Suite 312  
Madison, WI 53713

PROJECT NUMBER: 08126.00

DATE: September 15, 2010

REVISIONS:

△	03/10/10
△	09/15/10

SCALE: NTS

DRAWING NAME:  
Overall Project Views

DRAWING NUMBER:

**A3.00**





**1** View From Lake Mendota  
SCALE: NTS

© 2016 ELKUS | MANFREDI ARCHITECTS

ELKUS | MANFREDI  
ARCHITECTS

[address] 300 A STREET  
BOSTON MASSACHUSETTS 02210  
[phone] 617-426-1300

*The Edgewater*

666 Wisconsin Avenue  
Madison, WI 53703

Owner:  
**Landmark X, LLC**  
22 East Millin Street, Suite 800  
Madison, WI 53703

Developer:  
**Hammes Company**  
22 East Millin Street, Suite 800  
Madison, WI 53703

Civil Engineer:  
**BT<sup>2</sup>, Inc.**  
2830 Dairy Drive  
Madison, WI 53718

Landscape Architect:  
**Ken Salki Design, Inc.**  
303 S. Patterson, Suite One  
Madison, WI 53703

Lighting Design:  
**KJW Engineering Consultants**  
802 West Broadway, Suite 312  
Madison, WI 53713

PROJECT NUMBER: 05105.00

DATE: September 15, 2010

REVISIONS:

△	03/10/10
△	09/15/10

SCALE: NTS

DRAWING NAME:  
Overall Project Views

DRAWING NUMBER:

**A3.01**





**1** View From Northeast  
 SCAE: NTS

ELKUS | MANFREDI  
 ARCHITECTS

[address] 300 A STREET  
 BOSTON MASSACHUSETTS 02210  
 [tel] 617-426-1300

*The Edgewater*

666 Wisconsin Avenue  
 Madison, WI 53703

Owner:  
**Landmark X, LLC**  
 22 East Millin Street, Suite 800  
 Madison, WI 53703

Developer:  
**Hammes Company**  
 22 East Millin Street, Suite 800  
 Madison, WI 53703

Civil Engineer:  
**BT<sup>2</sup>, Inc.**  
 2830 Dairy Drive  
 Madison, WI 53718

Landscape Architect:  
**Ken Salki Design, Inc.**  
 303 S. Patterson, Suite One  
 Madison, WI 53703

Lighting Design:  
**KJW Engineering Consultants**  
 802 West Broadway, Suite 312  
 Madison, WI 53713

PROJECT NUMBER: 08105.00

DATE: September 15, 2010

REVISIONS:	
△	03/10/10
△	09/15/10

SCALE: NTS

DRAWING NAME:  
**Overall Project Views**

DRAWING NUMBER:

**A3.02**









1 9:00 AM March 20, 2009 (Daylight Savings Time)  
SCALE: 1"=100'-0"



2 12:00 PM March 20, 2009 (Daylight Savings Time)  
SCALE: 1"=100'-0"



4 17:00 PM March 20, 2009 (Daylight Savings Time)  
SCALE: 1"=100'-0"



3 15:00 PM March 20, 2009 (Daylight Savings Time)  
SCALE: 1"=100'-0"

ELKUS | MANFREDI  
ARCHITECTS

[Address] 300 A STREET  
BOSTON MASSACHUSETTS 02210  
[Phone] 617-426-1300

*The Edgewater*

666 Wisconsin Avenue  
Madison, WI 53703

Owner:  
**Landmark X, LLC**  
22 East Millin Street, Suite 600  
Madison, WI 53703

Developer:  
**Hammes Company**  
22 East Millin Street, Suite 600  
Madison, WI 53703

Civil Engineer:  
**BT<sup>2</sup>, Inc.**  
2630 Daly Drive  
Madison, WI 53718

Landscape Architect:  
**Ken Salki Design, Inc.**  
303 S. Patterson, Suite One  
Madison, WI 53703

Lighting Design:  
**KJJW Engineering Consultants**  
602 West Broadway, Suite 312  
Madison, WI 53713

PROJECT NUMBER: 05105.00

DATE: September 15, 2010

REVISIONS:

△	03/10/10
△	09/15/10

SCALE: 1" = 100'-0"

DRAWING NAME:  
SHADOW STUDY  
FOR  
MARCH 20, 2009

DRAWING NUMBER:

**A3.04**





666 Wisconsin Avenue  
Madison, WI 53703

Owner:  
**Landmark X, LLC**  
22 East Millin Street, Suite 600  
Madison, WI 53703

Developer:  
**Hammes Company**  
22 East Millin Street, Suite 600  
Madison, WI 53703

Civil Engineer:  
**BT<sup>2</sup>, Inc.**  
2630 Dairy Drive  
Madison, WI 53718

Landscape Architect:  
**Ken Sasaki Design, Inc.**  
303 S. Patterson, Suite One  
Madison, WI 53703

Lighting Design:  
**KJW Engineering Consultants**  
602 West Broadway, Suite 312  
Madison, WI 53713



**1** 9:00 AM June 21, 2009 (Daylight Savings Time)  
SCALE: 1" = 100'-0"



**2** 12:00 PM June 21, 2009 (Daylight Savings Time)  
SCALE: 1" = 100'-0"



**4** 17:00 PM June 21, 2009 (Daylight Savings Time)  
SCALE: 1" = 100'-0"



**3** 15:00 PM June 21, 2009 (Daylight Savings Time)  
SCALE: 1" = 100'-0"

PROJECT NUMBER: 08105.00

DATE: September 15, 2010

REVISIONS:

△	03/10/10
△	09/15/10

SCALE: 1" = 100'-0"

DRAWING NAME:  
**SHADOW STUDY  
FOR  
JUNE 21, 2009**

DRAWING NUMBER:

**A3.05**





666 Wisconsin Avenue  
Madison, WI 53703

Owner:  
**Landmark X, LLC**  
22 East Millin Street, Suite 600  
Madison, WI 53703

Developer:  
**Hammes Company**  
22 East Millin Street, Suite 600  
Madison, WI 53703

Civil Engineer:  
**BT<sup>2</sup>, Inc.**  
2830 Dairy Drive  
Madison, WI 53718

Landscape Architect:  
**Ken Salki Design, Inc.**  
303 S. Patterson, Suite One  
Madison, WI 53703

Lighting Design:  
**KJW Engineering Consultants**  
802 West Broadway, Suite 312  
Madison, WI 53713



1 9:00 AM September 22, 2009 (Daylight Savings Time)

SCALE: 1" = 100'



2 12:00 PM September 22, 2009 (Daylight Savings Time)

SCALE: 1" = 100'



4 17:00 PM September 22, 2009 (Daylight Savings Time)

SCALE: 1" = 100'



3 15:00 PM September 22, 2009 (Daylight Savings Time)

SCALE: 1" = 100'

PROJECT NUMBER: 09105.00

DATE: September 15, 2010

REVISIONS:

△	03/10/10
△	09/15/10

SCALE: 1" = 100'-0"

DRAWING NAME:

SHADOW STUDY  
FOR  
SEPTEMBER 22, 2009

DRAWING NUMBER:

A3.06





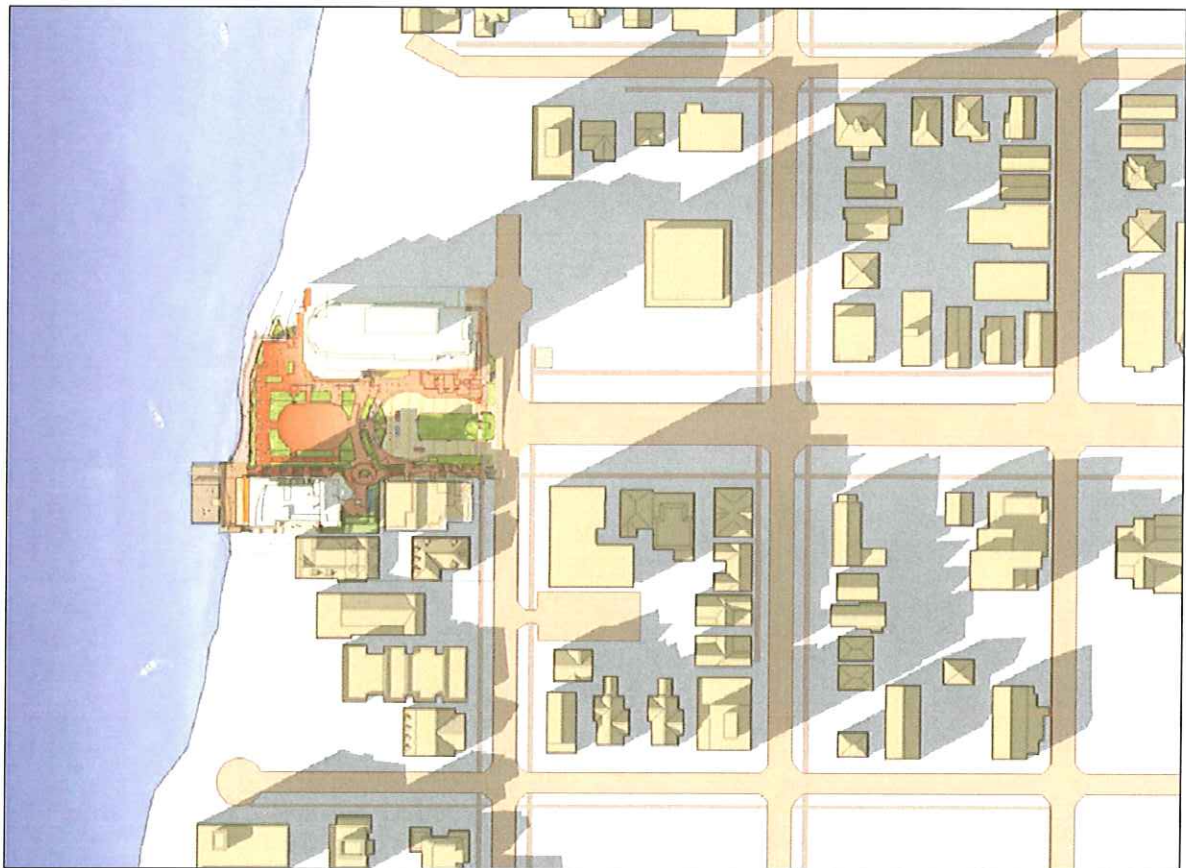
1 9:00 AM December 21, 2009

SCALE: 1" = 100'-0"



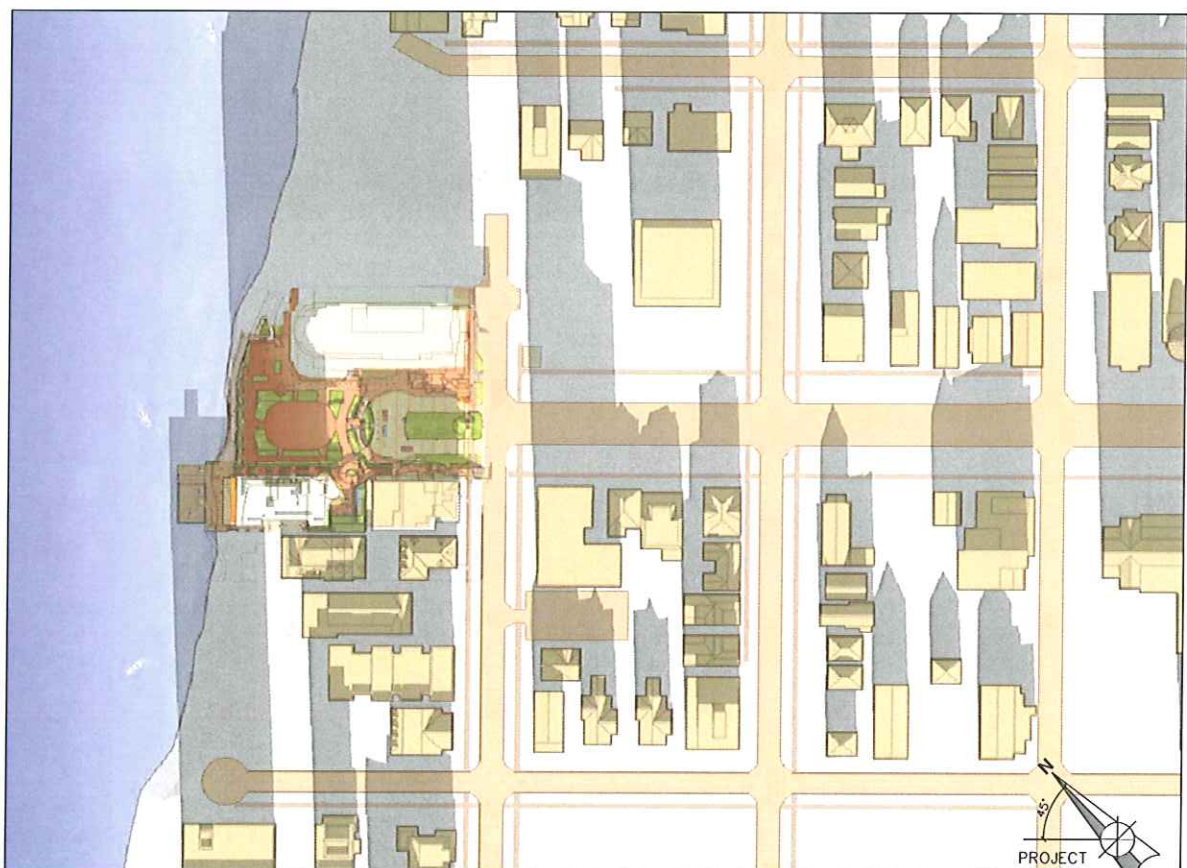
2 12:00 PM December 21, 2009

SCALE: 1" = 100'-0"



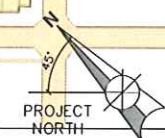
4 19:00 PM June 21, 2009

SCALE: 1" = 100'-0"



3 15:00 PM December 21, 2009

SCALE: 1" = 100'-0"



ELKUS | MANFREDI  
ARCHITECTS

[Address] 300 A STREET  
BOSTON MASSACHUSETTS 02210  
[P] 617-426-1300

*The Edgewater*

666 Wisconsin Avenue  
Madison, WI 53703

Owner:  
**Landmark X, LLC**  
22 East Millin Street, Suite 600  
Madison, WI 53703

Developer:  
**Hammes Company**  
22 East Millin Street, Suite 600  
Madison, WI 53703

Civil Engineer:  
**BT<sup>2</sup>, Inc.**  
2830 Dairy Drive  
Madison, WI 53718

Landscape Architect:  
**Ken Salki Design, Inc.**  
303 S. Patterson, Suite One  
Madison, WI 53703

Lighting Design:  
**KJW Engineering Consultants**  
802 West Broadway, Suite 312  
Madison, WI 53713

PROJECT NUMBER: 06105.00

DATE: September 15, 2010

REVISIONS:

△	03/10/10
△	09/15/10

SCALE: 1" = 100'-0"

DRAWING NAME:

SHADOW STUDY  
FOR  
DECEMBER 21, 2009  
AND  
JUNE 21, 2009

DRAWING NUMBER:

**A3.07**