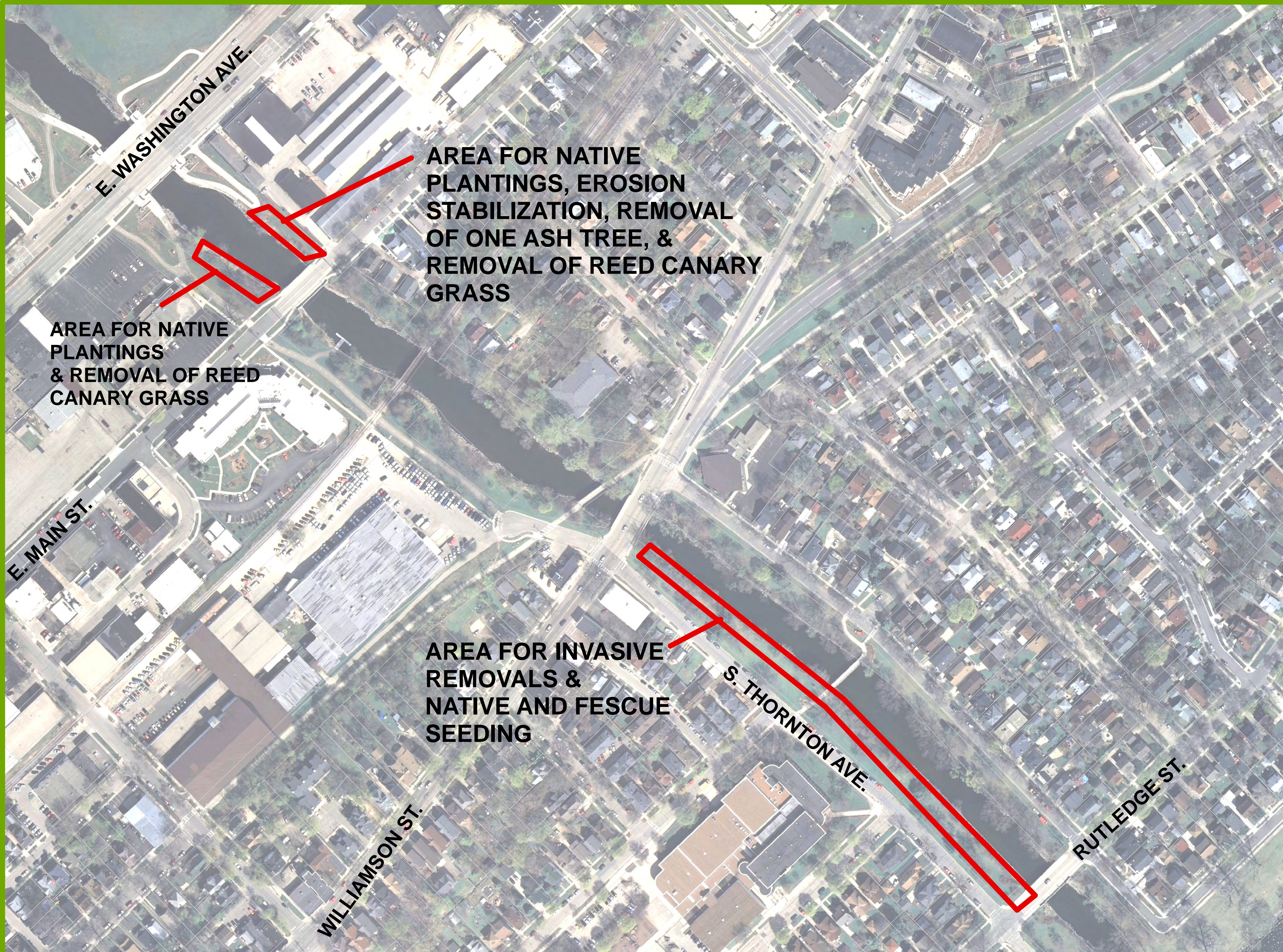


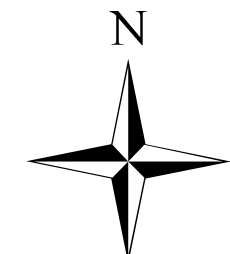
Yahara Parkway Historic Landscape Restoration



AREA FOR NATIVE PLANTINGS, EROSION STABILIZATION, REMOVAL OF ONE ASH TREE, & REMOVAL OF REED CANARY GRASS

AREA FOR NATIVE PLANTINGS & REMOVAL OF REED CANARY GRASS

AREA FOR INVASIVE REMOVALS & NATIVE AND FESCUE SEEDING



Date: 3/22/2013
0 30 60 120 Feet

