

Joint Campus Area Committee

Information/Initial Approval, 6-12-19

Sellery Hall



Background & Scope

Background:

- The 233,876 GSF Sellery Hall opened in 1963. The building houses approximately 1,134 primarily first year students and is composed of two towers, of nine resident floors each. Each floor has two wings with double rooms arranged along both sides of the central corridors with shared bathrooms in the center core.

Scope:

- Renovation of existing Sellery Hall (First Floor, Basement, and 10 resident floors)
- Addition of connecting link (5 elevators), 11th and 12th resident floors, with new restrooms in link for B-Tower
- Site Plan reimagined to include new entrance patio, 2 basketball courts, bicycle parking, and access driveway and parking off Dayton Street.

Project-Specific:

- No net-loss of beds.
- Maintain full occupancy throughout construction.
- Improve quality and efficiency of building systems.
- Create opportunities that encourage socialization.
- Increase efficiency of move in/move out activity by improved site access.
- Preserve large-scale trees adjacent to existing buildings.
- Increase efficiency and improve distribution of bicycle parking.



Site Plan



Building Model View – North West Corner



Building Model View – W Johnson St Entry



W. JOHNSON STREET
ENTRANCE



SELLERY HALL
DFDM 14E2O-01

JCAC Info/Initial
6-12-19



Building Model View – Connecting Core Link



Building Model View – South Façade with Link



EXISTING SITE PHOTOS – JOHNSON ST



EXISTING SITE PHOTOS – EAST CAMPUS MALL



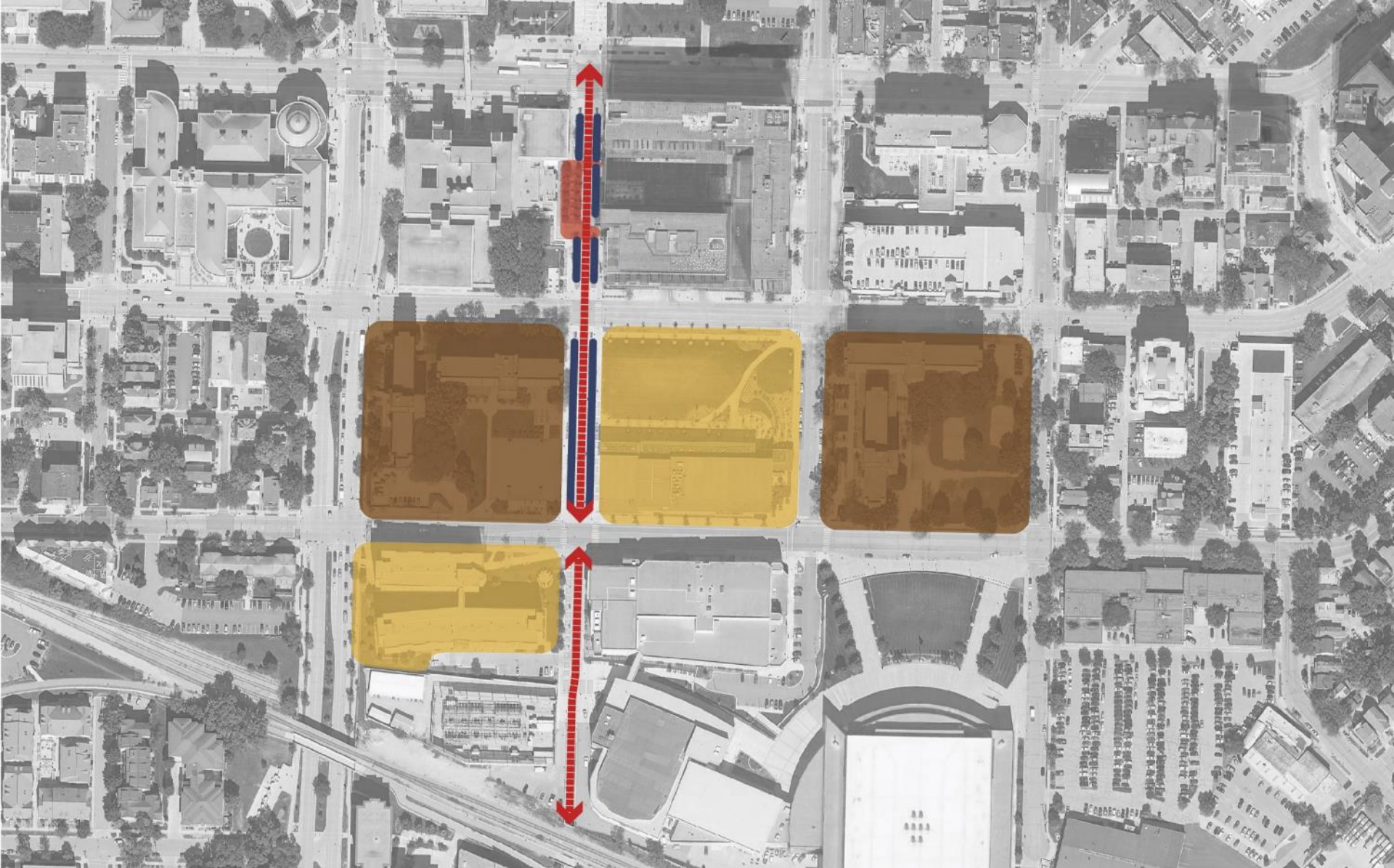
EXISTING SITE PHOTOS - BACKYARD



EXISTING SITE PHOTOS - BACKYARD



Materials + Character Context



Materials + Character: East Campus Mall



Materials + Character: Gordon Commons + Ogg



Materials + Character: Witte + Sellery

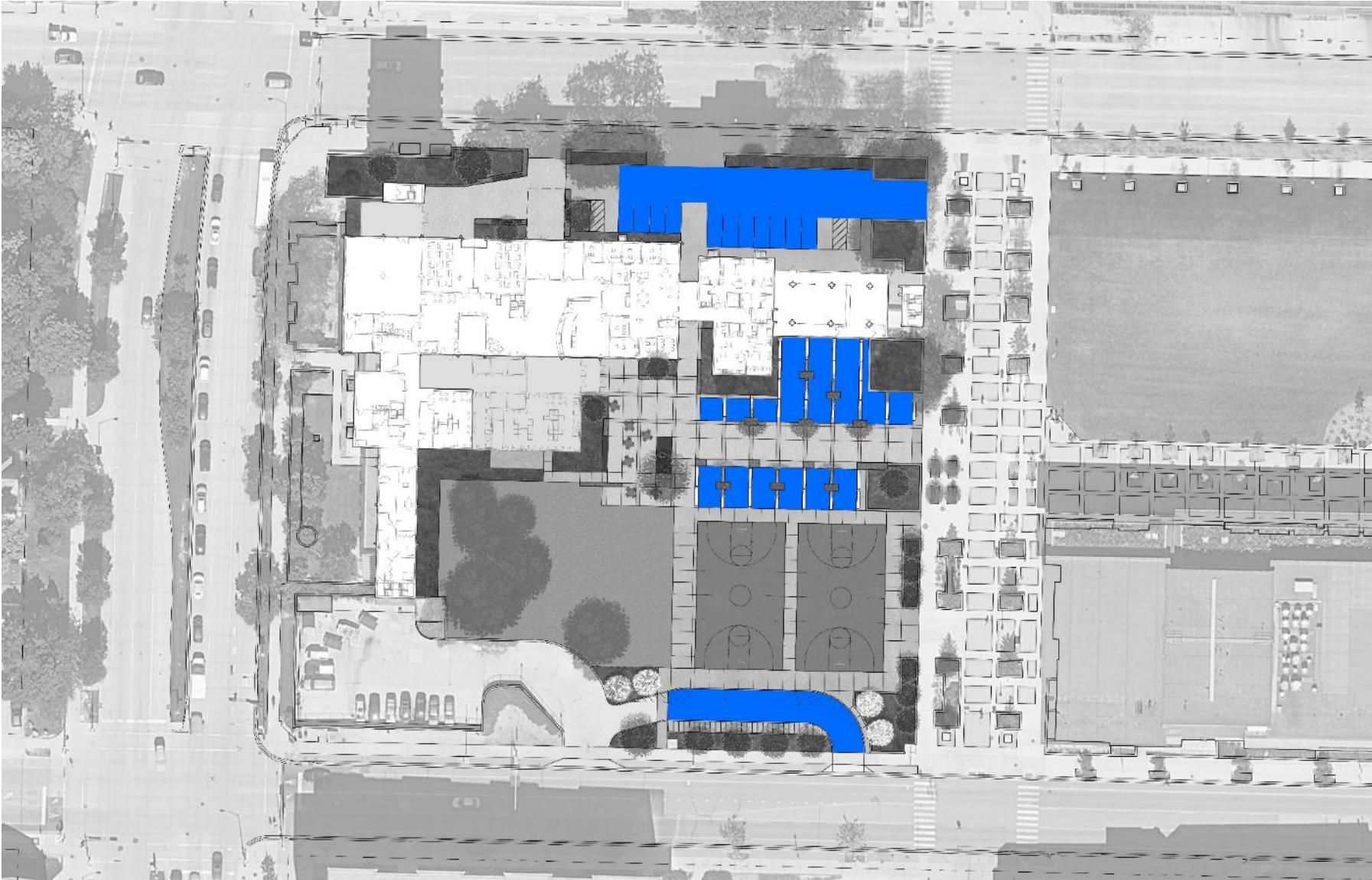


Materials Palette: Pavement Accent Bands



Witte pavement design

Materials Palette: Permeable Unit Pavers



Materials Palette: Permeable Unit Pavers

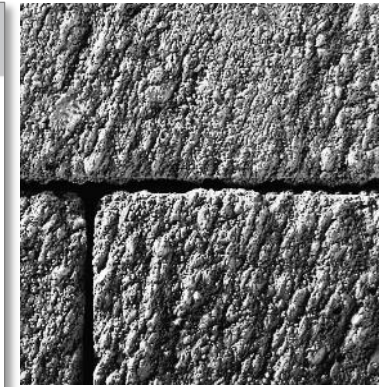
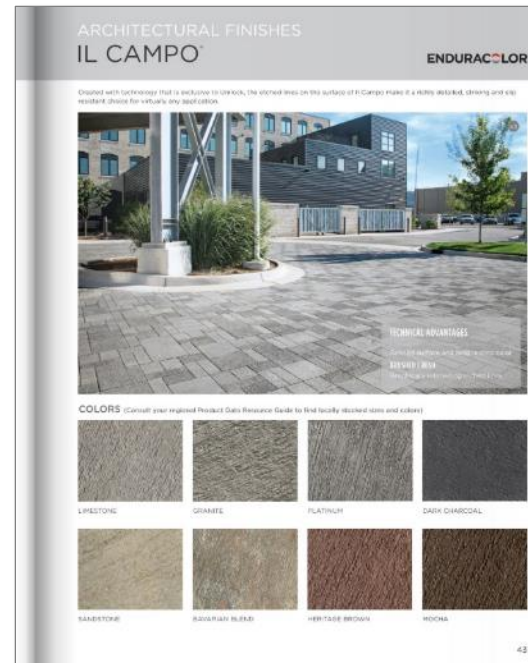
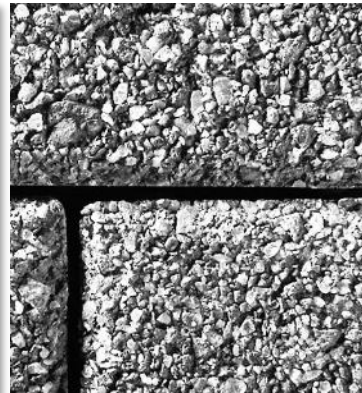
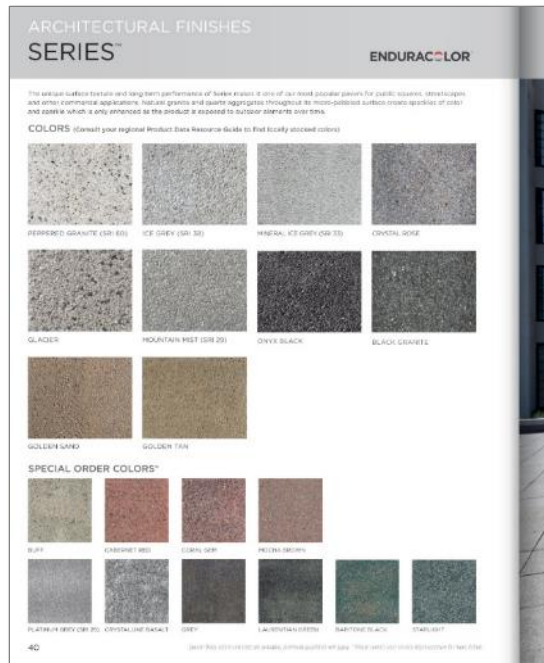


Unilock Eco-Line (@ bicycle parking)

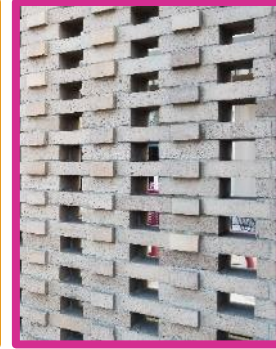
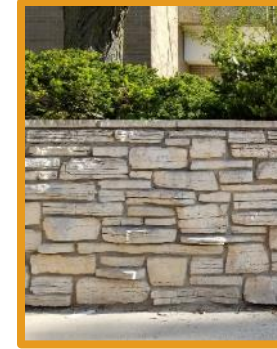
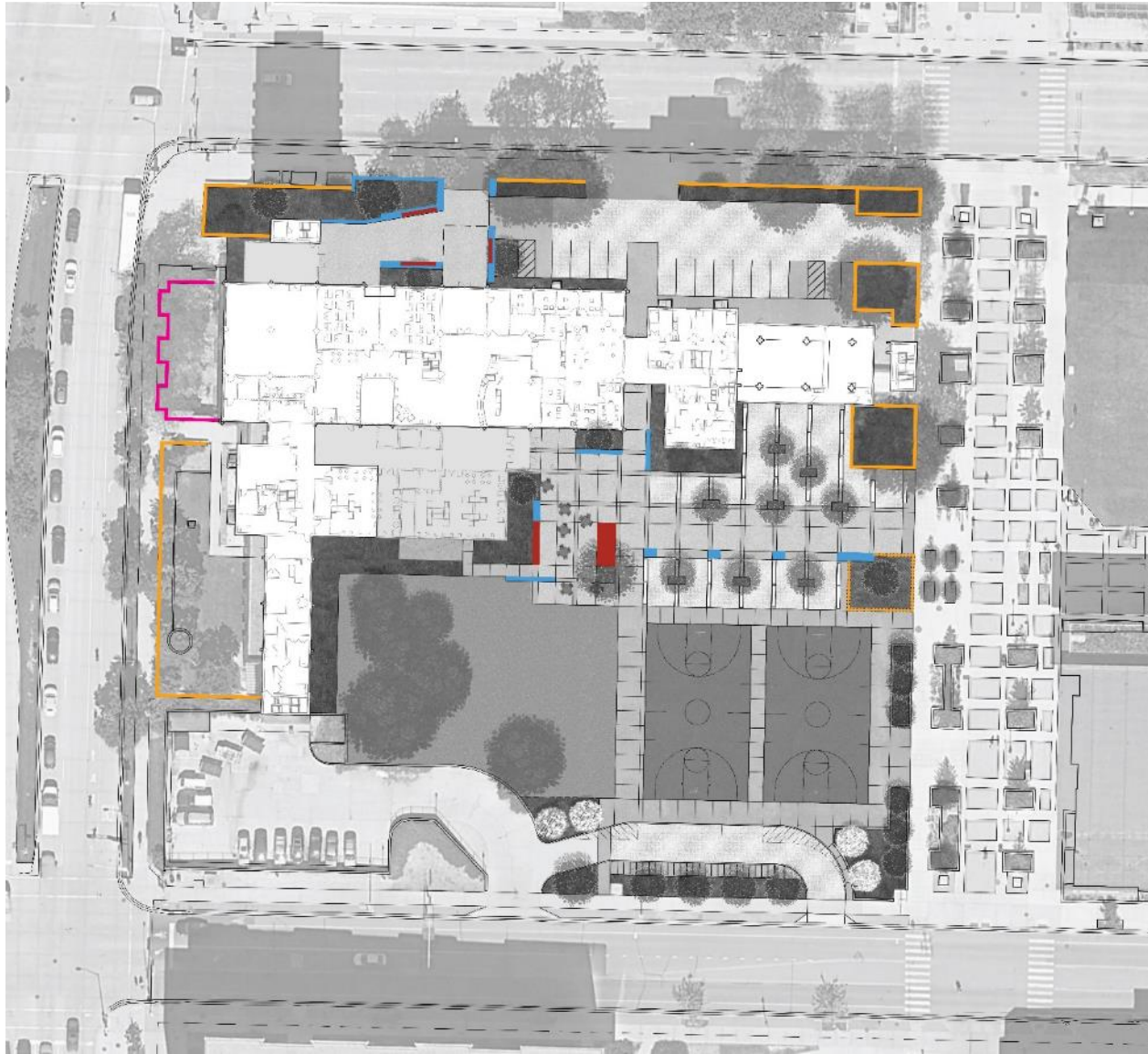


Unilock Dura-Flow (@ vehicular zones)

Unilock finishes



Wall Types



Materials Palette: Precast Seatwalls



Materials Palette: Campus Standard Furnishings



Site Lighting



Approval Schedule

Meeting / Action	Dates
	tentative, confirmed, completed
DRB #1 Submittal to FP&M	March 5, 2019
DRB #1 - Intro	March 19, 2019
Notify alder of project/schedule in writing (30 days prior to JCAC)	March 20, 2019
City Development Assistance Team (DAT)	March 21, 2019
Joint Campus Area Committee Submittal to FP&M	May 29, 2019
Joint Campus Area Committee - Informational presentation	June 12, 2019
DRB #2 Submittal to FP&M	Aug 6, 2019
35% Submittal to DOA	Aug 22, 2019
DRB #2 - Schematic	Aug 20, 2019
Joint Campus Area Committee Submittal to FP&M	Aug28, 2019
Joint Campus Area Committee – recommendation to DRB	September 11, 2019
DRB #3 Submittal to FP&M	October 1, 2019
DRB #3 - Final	October 15, 2019
City Drawing (site/civil) review prior to submittal	November, 2019
Submit drawings for city staff sign-off	December 2019
Final approval from city staff	March 2020

Site Plan

