



Threshold Development
Zion Lutheran Site Development
2165 Linden Ave, Madison, WI
January 26, 2022





LINDEN AVE

DIVISION ST

DUNNING ST

PROPOSED BUILDING

PROPOSED BUILDING

EXISTING BUILDING
266 DUNNING ST

253 DIVISION ST

25'x25' VISION TRIANGLE, TYP.

10'x10' VISION TRIANGLE, TYP.

LANDSCAPE EDGING, TYP.

LANDSCAPE EDGING, TYP.

DRY-STACK CEDAR
PRIVACY FENCE,
SEE DETAIL

RECOMMENDED PLAN BY TRAFFIC
ENGINEERING AND CITY ENGINEERING
DEPARTMENT.



CREATE THE VISION TELL THE STORY

jsdinc.com

MADISON REGIONAL OFFICE
161 HORIZON DRIVE, SUITE 101
VERONA, WISCONSIN 53593
P. 608.848.5060

CLIENT:
**THRESHOLD
DEVELOPMENT GROUP**

CLIENT ADDRESS:
**1952 ATWOOD AVENUE
MADISON, WISCONSIN 53704**

PROJECT:
**2165 LINDEN AVENUE
REDEVELOPMENT**

PROJECT LOCATION:
**2165 LINDEN AVENUE
MADISON, DANE COUNTY
WISCONSIN 53704**

PLAN MODIFICATIONS:

| # | Date | Description |
|----|------------|----------------------|
| 1 | 01.10.2022 | LAND USE SUBMITTAL |
| 2 | 02.25.2022 | LAND USE RESUBMITTAL |
| 3 | | |
| 4 | | |
| 5 | | |
| 6 | | |
| 7 | | |
| 8 | | |
| 9 | | |
| 10 | | |
| 11 | | |
| 12 | | |
| 13 | | |
| 14 | | |
| 15 | | |

Designed By: MWS
Reviewed By: KJY
Approved By: KJY

SHEET TITLE:
LANDSCAPE PLAN

SHEET NUMBER:
L1.0

JSD PROJECT NO: 21-11164

File: I:\2021\211164\DWG\Landscapes\Sheet211164_Landscape.dwg Layout: L1.0 User: mmsincalchi Plotted: Feb 25, 2022 - 9:20am Xref's: 211164 2165 Linden Ave

THESE PLANS AND DESIGNS ARE COPYRIGHT PROTECTED AND MAY NOT BE USED IN WHOLE OR IN PART WITHOUT THE WRITTEN CONSENT OF JSD PROFESSIONAL SERVICES, INC.



knothe • bruce
ARCHITECTS

Phone: 7601 University Ave., Ste 201
608.836.3690 Middleton, WI 53562

ISSUED
Issued for UDC & Land Use - Jan. 10, 2022
Issued for UDC & Land Use Resubmittal Feb 28, 2022

PROJECT TITLE
**Threshold
Development
Zion Lutheran Site
Development**

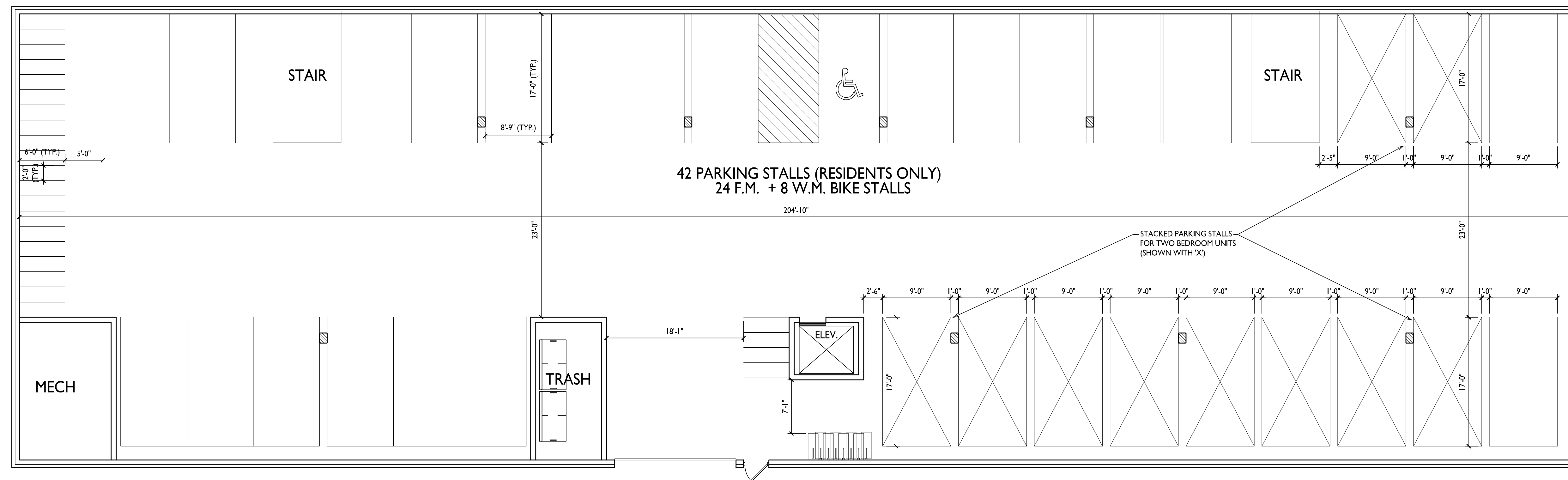
2165 Linden Ave
Madison, Wisconsin
SHEET TITLE
**Basement Floor
Plan**

SHEET NUMBER

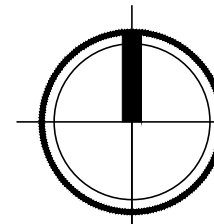
A-1.0

PROJECT NO. **2102**

© Knothe & Bruce Architects, LLC



BASEMENT FLOOR PLAN
A-1.0 1/8" = 1'-0"





knothe + bruce
ARCHITECTS

Phone: 7601 University Ave., Ste 201
608.836.3690 Middleton, WI 53562

ISSUED
Issued for UDC & Land Use - Jan. 10, 2022
Issued for UDC & Land Use Resubmittal Feb 28, 2022.

PROJECT TITLE
**Threshold
Development
Zion Lutheran Site
Development**

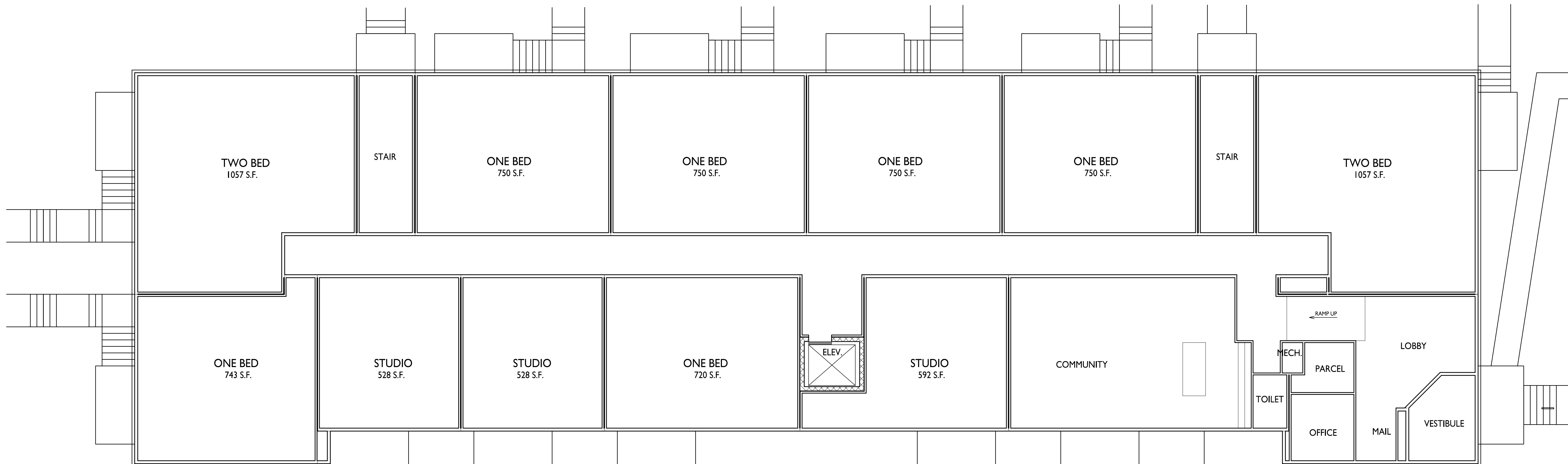
2165 Linden Ave
Madison, Wisconsin
SHEET TITLE
First Floor Plan

SHEET NUMBER

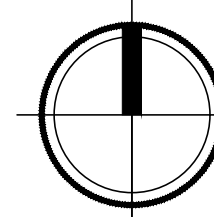
A-1.1

PROJECT NO. **2102**

© Knothe & Bruce Architects, LLC



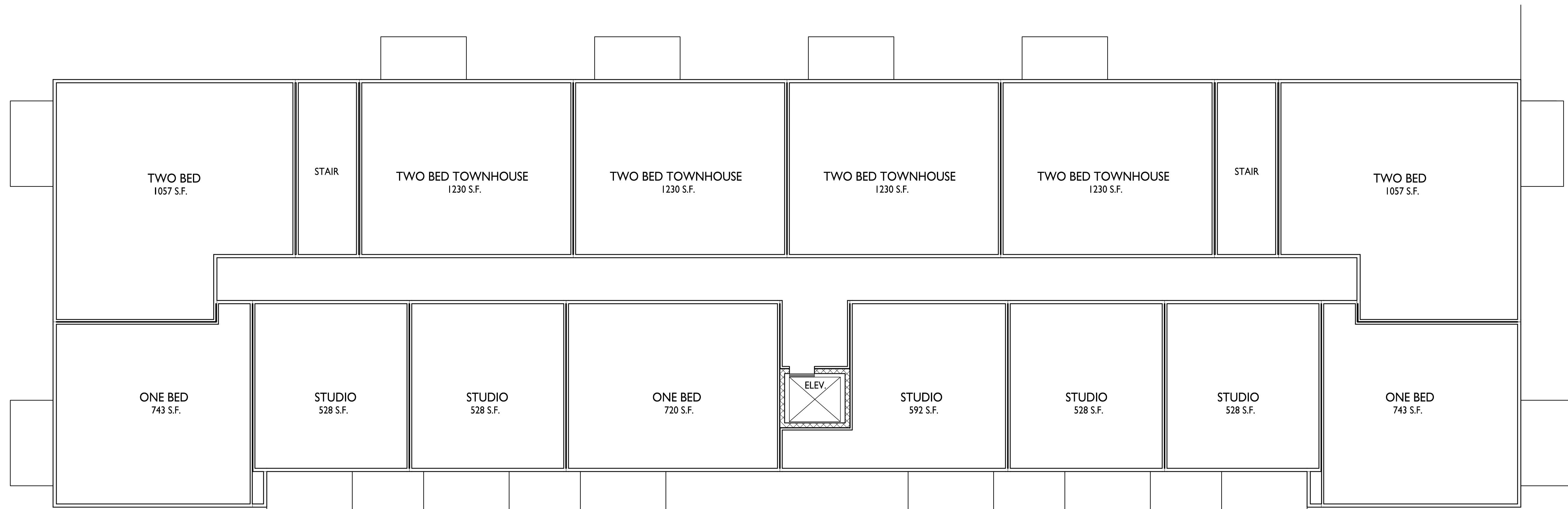
FIRST FLOOR PLAN
A-1.1 1/8" = 1'-0"





knothe bruce
ARCHITECTS

Phone: 7601 University Ave., Ste 201
608.836.3690 Middleton, WI 53562

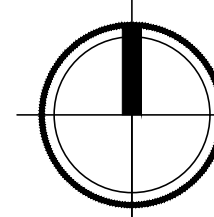


ISSUED
Issued for UDC & Land Use - Jan. 10, 2022
Issued for UDC & Land Use Resubmittal Feb 28, 2022

PROJECT TITLE
Threshold
Development
Zion Lutheran Site
Development

2165 Linden Ave
Madison, Wisconsin
SHEET TITLE
Second Floor Plan

1 SECOND FLOOR PLAN
A-1.2 1/8" = 1'-0"



SHEET NUMBER

A-1.2

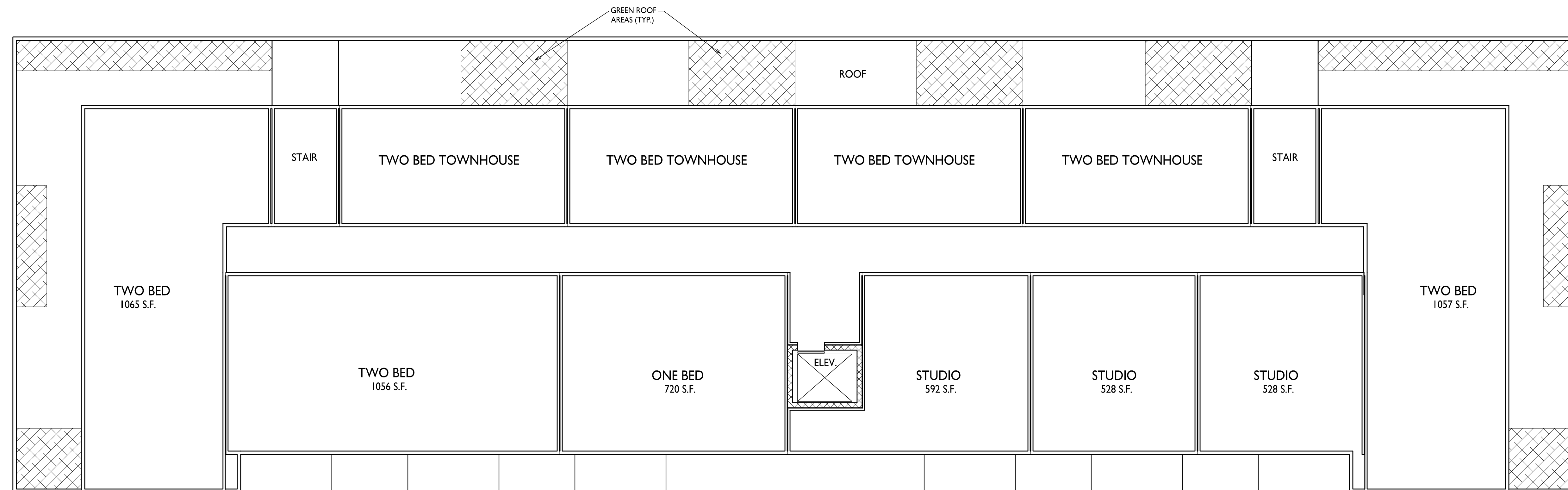
PROJECT NO. 2102

© Knothe & Bruce Architects, LLC



knothe • bruce
ARCHITECTS

Phone: 7601 University Ave., Ste 201
608.836.3690 Middleton, WI 53562

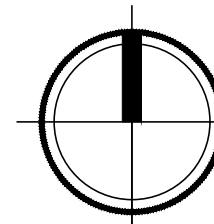


ISSUED
Issued for UDC & Land Use - Jan. 10, 2022
Issued for UDC & Land Use Resubmital Feb 28, 2022

PROJECT TITLE
**Threshold
Development
Zion Lutheran Site
Development**

2165 Linden Ave
Madison, Wisconsin
SHEET TITLE
Third Floor Plan

THIRD FLOOR PLAN
1/8" = 1'-0"

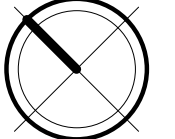


SHEET NUMBER

A-1.3

PROJECT NO. **2102**

© Knothe & Bruce Architects, LLC



NOT FOR CONSTRUCTION



1 COLOR ELEVATION - NORTH
A-2.2 1/8" = 1'-0"



2 COLOR ELEVATION - SOUTH
A-2.2 1/8" = 1'-0"



3 COLOR ELEVATION - EAST
A-2.2 1/8" = 1'-0"



4 COLOR ELEVATION - WEST
A-2.2 1/8" = 1'-0"

| EXTERIOR MATERIAL SCHEDULE | | |
|----------------------------------|------------------|---------------------|
| BUILDING ELEMENT | MANUFACTURER | COLOR |
| (#1) - COMPOSITE LAP SIDING | JAMES HARDIE | LIGHT MIST |
| (#2) - COMPOSITE LAP SIDING | JAMES HARDIE | EVENING BLUE |
| (#3) - COMPOSITE LAP SIDING | JAMES HARDIE | MOUNTAIN SAGE |
| (#4) - COMPOSITE LAP SIDING | JAMES HARDIE | GRAY SLATE |
| (#5) - COMPOSITE PANEL | JAMES HARDIE | ARCTIC WHITE |
| COMPOSITE TRIM | JAMES HARDIE | ARCTIC WHITE |
| (#6) - BRICK VENEER | HEBRON BRICK | CRIMSON CREEK |
| (#7) - BRICK VENEER | INTERSTATE BRICK | TUMBLEWEED |
| (#8) - CAST STONE BANDS & SILLS | PRAIRIE STONE | GRIS - SMOOTH |
| (#9) - COMPOSITE WINDOWS | ANDERSEN 100 | BLACK |
| (#10) - ALUM. STOREFRONT | N/A | BLACK |
| INSULATED METAL DOORS/FRAMES | N/A | TBD |
| CANOPY & BAY SOFFITS | JAMES HARDIE | COLOR TO MATCH ADJ. |
| (#11) - RAILINGS & HANDRAILS | SUPERIOR | BLACK |
| (#12) - COLUMNS & CORBEL ACCENTS | N/A | WALNUT |
| TREATED-EXPOSED DECK BEAMS | N/A | BROWN TREATED |



SIGNAGE











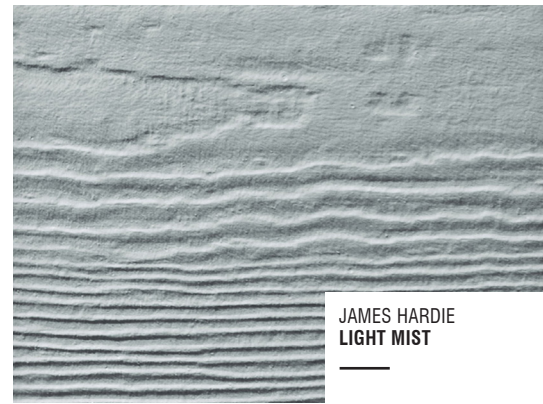




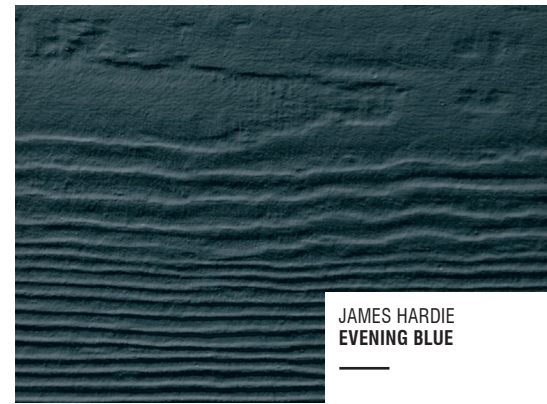




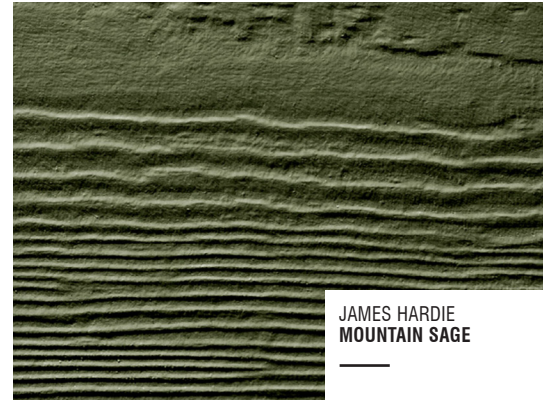




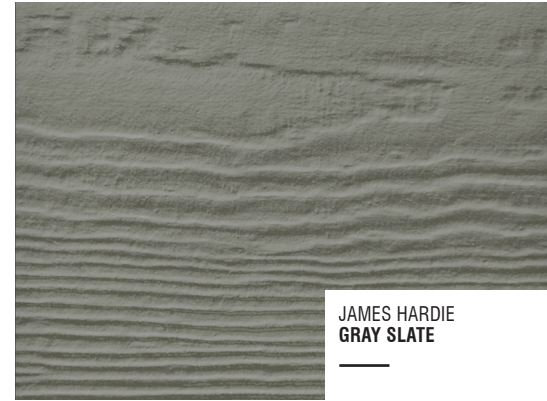
JAMES HARDIE
LIGHT MIST



JAMES HARDIE
EVENING BLUE

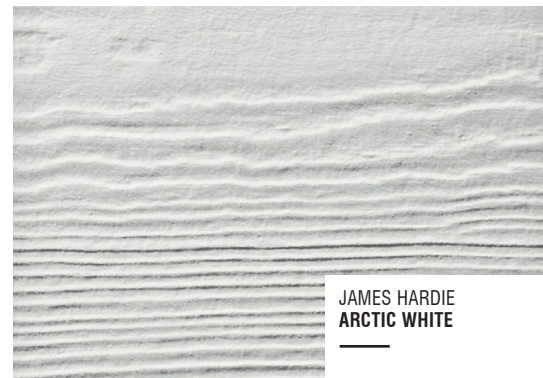


JAMES HARDIE
MOUNTAIN SAGE



JAMES HARDIE
GRAY SLATE

COMPOSITE HORIZONTAL SIDING



JAMES HARDIE
ARCTIC WHITE



PRAIRIE STONE
GRIS | SMOOTH

COMPOSITE PANELS & TRIM

CAST STONE BANDS & SILLS



MANUFACTURER
WALNUT

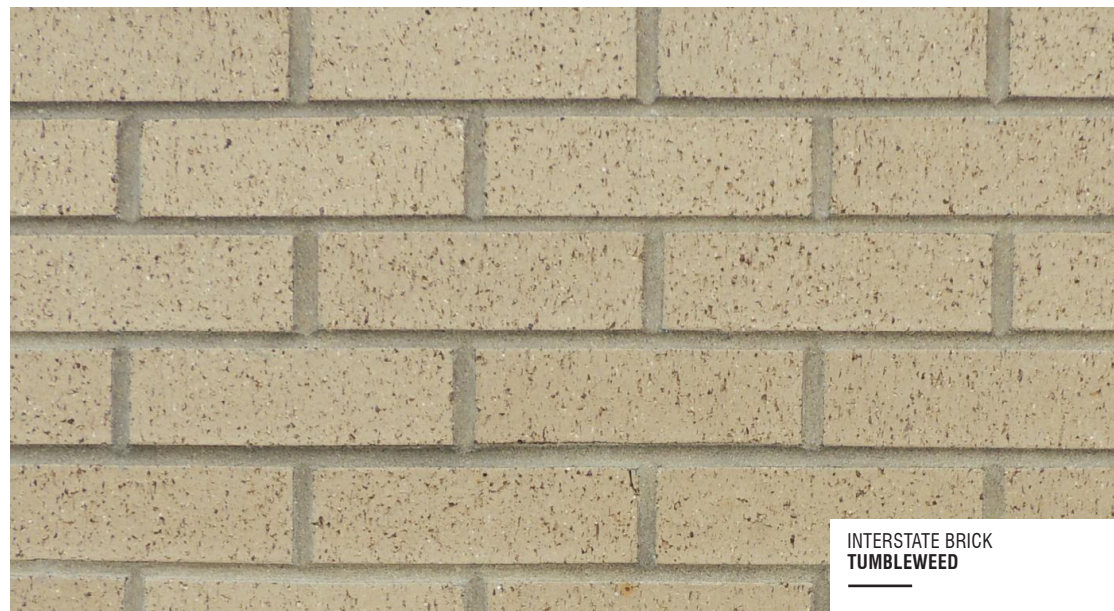
COLUMNS



MANUFACTURER
BLACK

**RAILINGS & WINDOWS
ALUM. STOREFRONT**

| EXTERIOR MATERIAL SCHEDULE | | |
|----------------------------------|------------------|---------------------|
| BUILDING ELEMENT | MANUFACTURER | COLOR |
| (#1) - COMPOSITE LAP SIDING | JAMES HARDIE | LIGHT MIST |
| (#2) - COMPOSITE LAP SIDING | JAMES HARDIE | EVENING BLUE |
| (#3) - COMPOSITE LAP SIDING | JAMES HARDIE | MOUNTAIN SAGE |
| (#4) - COMPOSITE LAP SIDING | JAMES HARDIE | GRAY SLATE |
| (#5) - COMPOSITE PANEL | JAMES HARDIE | ARCTIC WHITE |
| COMPOSITE TRIM | JAMES HARDIE | ARCTIC WHITE |
| (#6) - BRICK VENEER | HEBRON BRICK | CRIMSON CREEK |
| (#7) - BRICK VENEER | INTERSTATE BRICK | TUMBLEWEED |
| (#8) - CAST STONE BANDS & SILLS | PRAIRIE STONE | GRIS - SMOOTH |
| (#9) - COMPOSITE WINDOWS | ANDERSEN 100 | BLACK |
| (#10) - ALUM. STOREFRONT | N/A | BLACK |
| INSULATED METAL DOORS/FRAMES | N/A | TBD |
| CANOPY & BAY SOFFITS | JAMES HARDIE | COLOR TO MATCH ADJ. |
| (#11) - RAILINGS & HANDRAILS | SUPERIOR | BLACK |
| (#12) - COLUMNS & CORBEL ACCENTS | N/A | WALNUT |
| TREATED-EXPOSED DECK BEAMS | N/A | BROWN TREATED |



INTERSTATE BRICK
TUMBLEWEED

BRICK VENEER



HEBRON
CRIMSON CREEK

BRICK VENEER