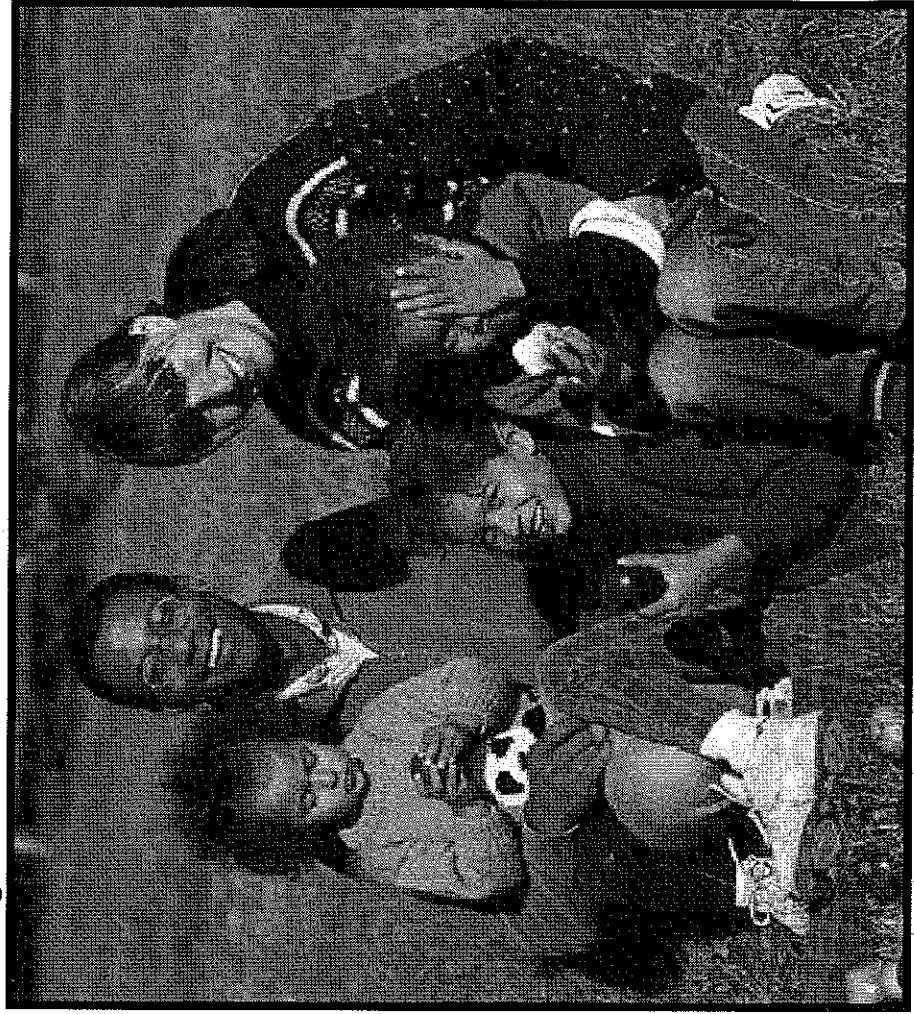


Hopeful Trends in Infant Mortality- Investigation in Progress January 2008

 **Public Health**
MADISON & DANE COUNTY

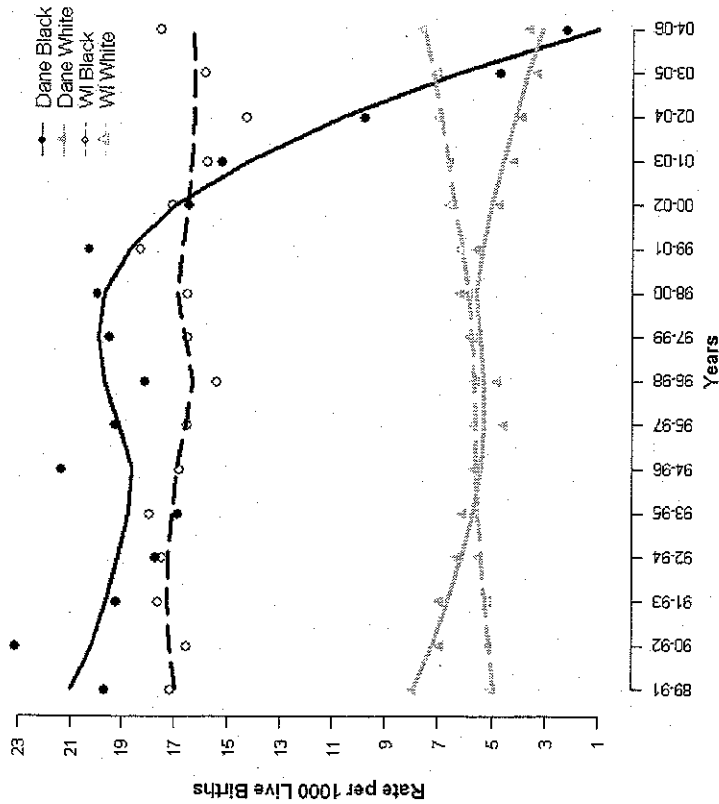
Healthy people and places



Decline in Black Infant Mortality

- Is the trend real?
- What are its context and component parts?
- What impact has it on the community?
- What might be the causes?
- How do we find out?

Dane and Wisconsin Infant Mortality From 1989 To 2006



Infant Mortality Rates, by Country, 2004

Rank	Country	IMR Rate	Rank	Country	IMR Rate
1	Singapore	2.28	60	Sri Lanka	14.78
2	Sweden	2.77	61	United Arab Emirates	15.06
3	Hong Kong S.A.R.	2.97	62	Mauritius	15.57
4	Japan	3.28	63	Argentina	15.66
5	Iceland	3.31	64	Russia	16.01
6	Finland	3.59	65	Jamaica	16.63
7	Norway	3.73	66	Panama	17.14
8	Malta	3.94	67	Bahrain	17.91
9	Czech Republic	3.97	68	Jordan	18.11
10	Germany	4.2	69	Malaysia	18.35
11	France	4.31		Wisconsin Black	19.2
12	Macau S.A.R.	4.39	70	Qatar	19.32
13	Switzerland	4.43	71	Georgia	19.34
14	Spain	4.48	72	West Bank	20.16
15	Slovenia	4.5	73	Oman	20.26
	Wisconsin White	4.5	74	Thailand	20.83
16	Denmark	4.63	75	Bulgaria	21.31
17	Austria	4.68	76	Mexico	21.69
18	Australia	4.76	77	Colombia	21.72
19	Belgium	4.76	78	Solomon Islands	22.09
20	Canada	4.82	79	Albania	22.31

U.S. Census International Data Base, for countries with populations greater than 250,000

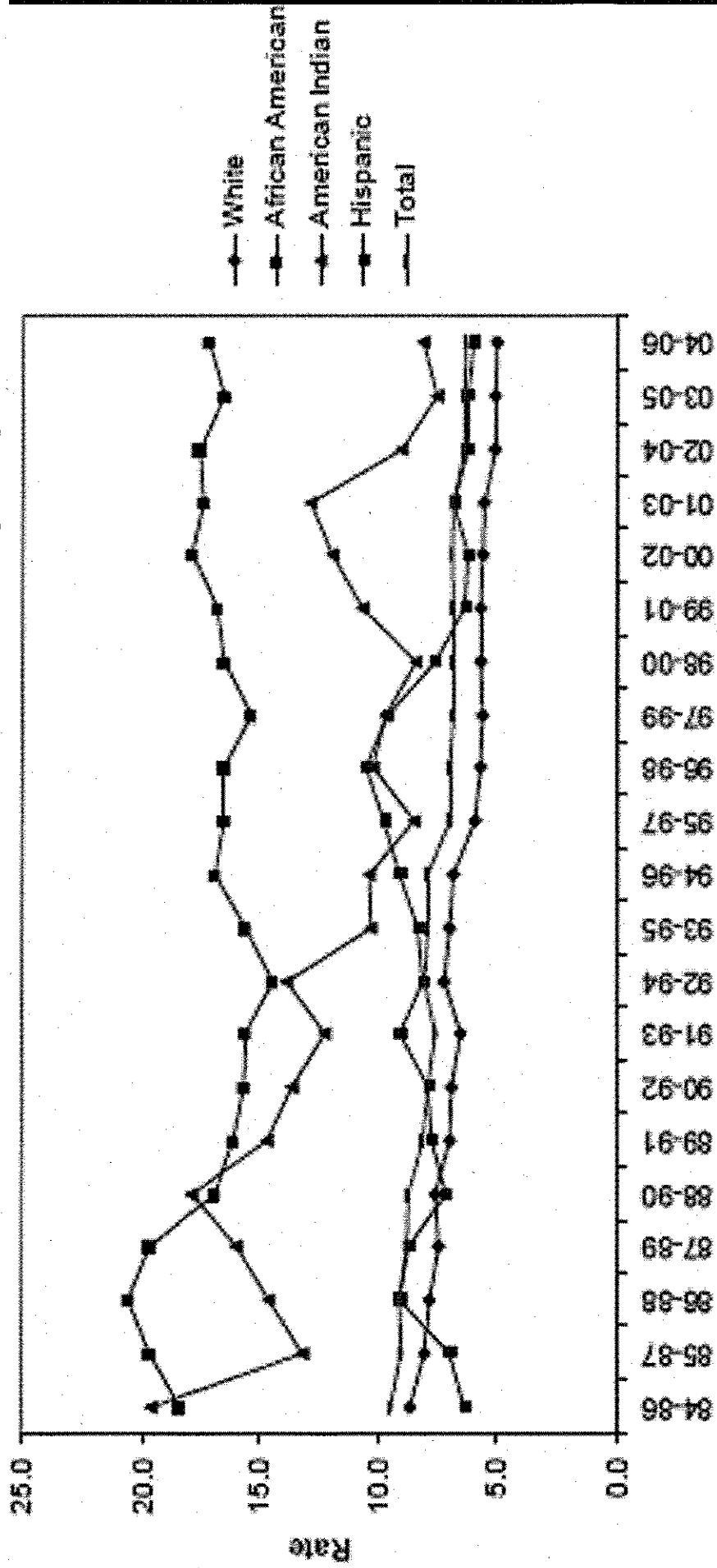
AA Infant Mortality Rate by state, 2004

Rank	State	AA Rate	Rank	State	AA Rate	Rank	State	AA Rate
	US	13.79						
1	Massachusetts	9.18	14	Pennsylvania	13.47	27	Ohio	16.34
2	Minnesota	9.21	15	Georgia	13.93	28	Nebraska	16.53
3	Washington	10.60	16	Maryland	13.96	29	Kansas	16.54
4	New Jersey	10.66	17	So Carolina	14.12	30	No Carolina	16.76
5	New York	10.90	18	Virginia	14.19	31	Indiana	16.92
6	Florida	11.81	19	Mississippi	14.58	32	Oklahoma	17.21
7	Arizona	11.96	20	D.C.	14.65	33	Michigan	17.51
8	California	12.39	21	Missouri	14.66	34	Nevada	18.56
9	Kentucky	12.59	22	Colorado	14.68	35	Wisconsin	19.39
10	Texas	12.73	23	Louisiana	14.78			
11	Connecticut	12.88	24	Delaware	15.48			
12	Alabama	13.25	25	Illinois	15.73			
13	Arkansas	13.40	26	Tennessee	15.97			

Sources of Data/Potential Error

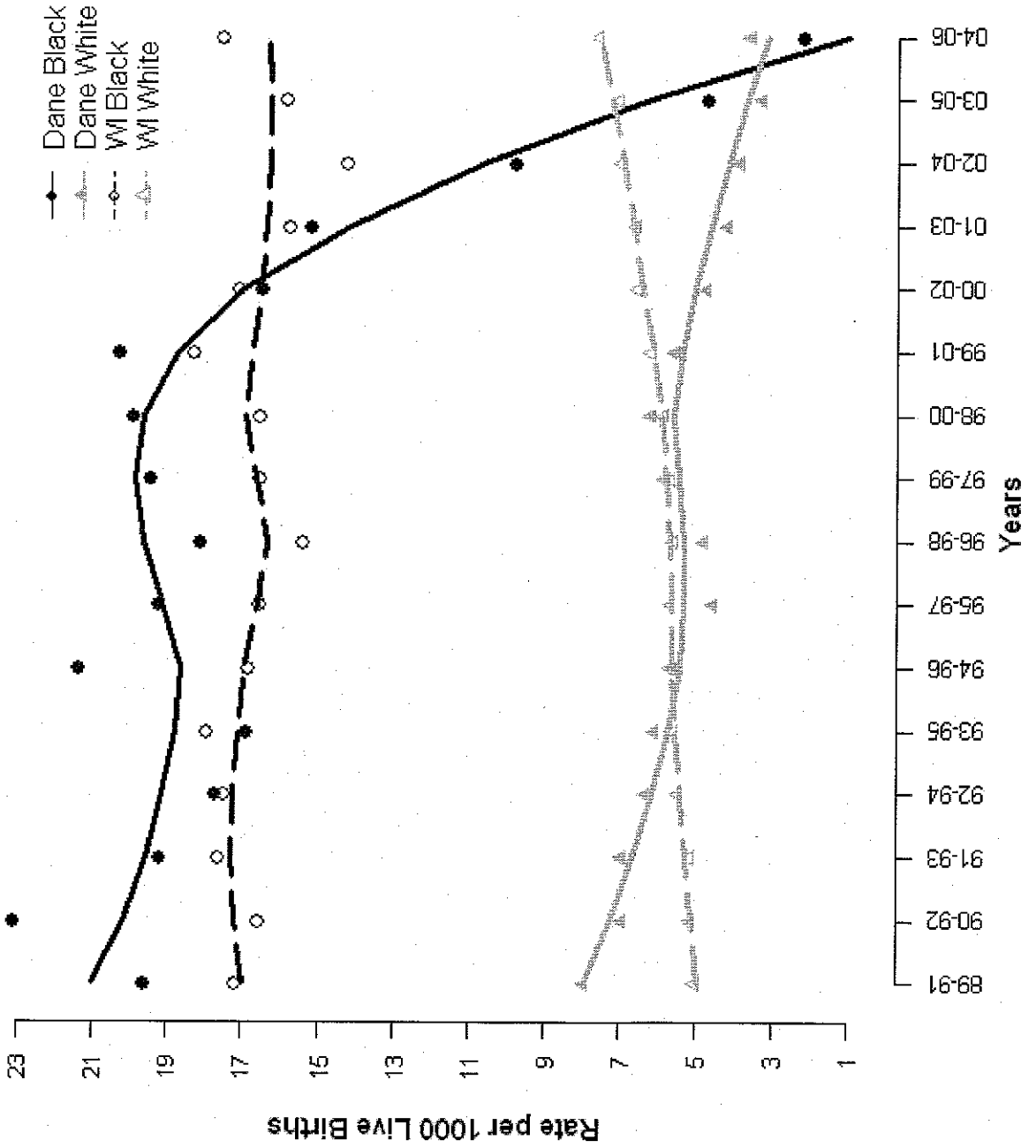
- Reporting
- Definitions
 - Infant death
 - Infant Mortality
 - Premature Birth
 - Extremely Premature Birth
 - Fetal Death
- Classification
- Linkage
- Random variation of small numbers

Wisconsin Infant Mortality Rates by Race/Ethnicity, 1984-2006 (3-Year Rolling Averages)

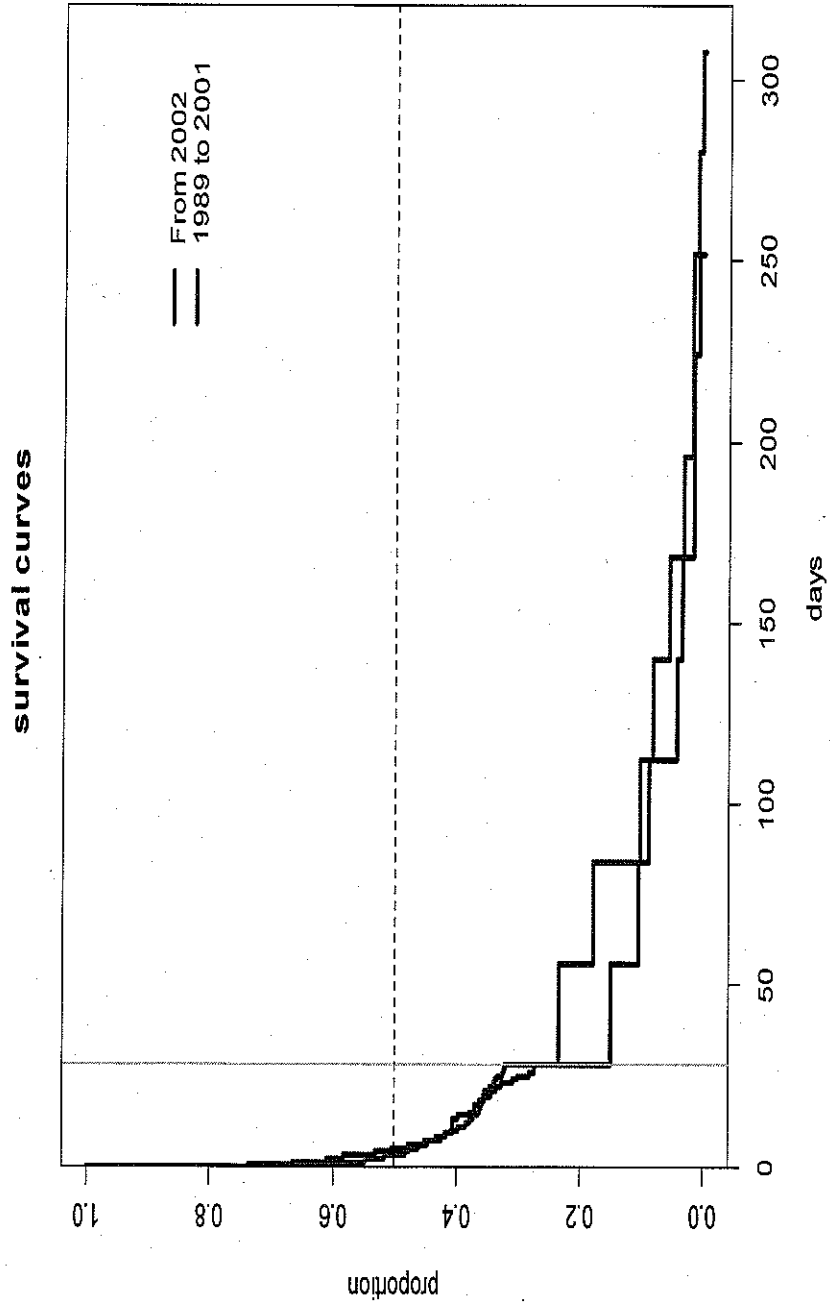


Wisconsin Births and Infant Deaths, 2006

Dane and Wisconsin Infant Mortality From 1989 To 2006

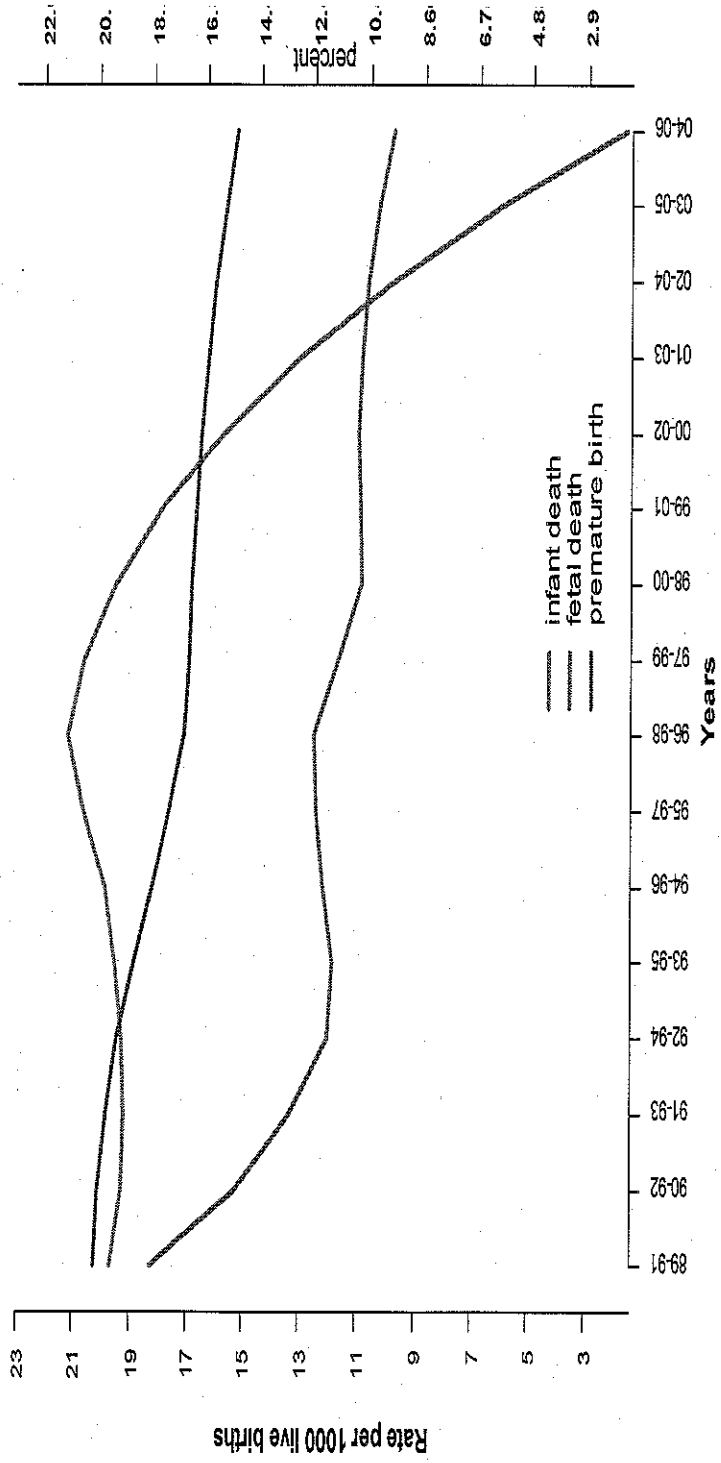


Infant Mortality by Age Dane County, 1989-2006



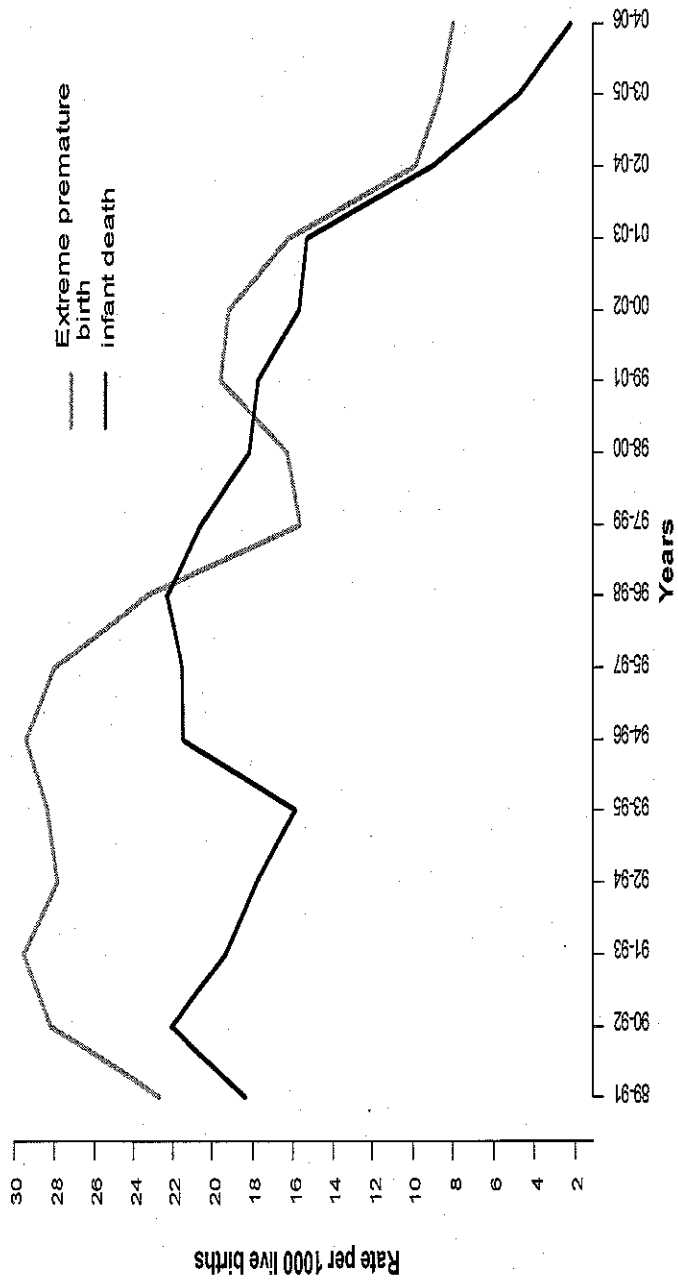
BIMR, Premature Births, Fetal Deaths

Dane County Comparative Rates
Among Black From 1989 To 2006



BIMR and Extremely Premature Births

Dane County Comparative Rates Among Black From 1989 To 2006



Impact of Fewer Black Premature Births Dane County, 2002-2006

- 29 lives saved
 - Instead of the 13 actual infant deaths for 2155 live births during 2002-2006 (IMR=6.0), 42 would have been expected if the 1989-2001 trend (IMR=19.2) had prevailed.
- 23 babies not at-risk for lifelong disabilities
 - Instead of the 20 actual extremely premature births 2002-2006 (EPR=9.4), 50 would have been expected if the 1989-2001 trend (EPR=23.7) had prevailed. Of the 30 additional extreme premies, 75% would have survived.
- \$5million in short-term hospital charges
 - Thirty additional extreme premies X \$165,032 (hospitalization only charges during first year of life for birth weights 750-999 grams, DHFS “2005 Medicaid Births in Selected Counties”) = \$4,950,960.