

EXHIBIT A

VACATION OF A PORTION OF THE RIGHT OF WAY OF BOYER STREET AS PLATTED BY THE UNIVERSITY RESEARCH PARK - PIONEER 1ST ADDITION

NORTHWEST CORNER
SECTION 34-T7N-R8E

N 89° 11' 37" E 2639.80' MON TO MON



NORTH LINE OF THE
NORTHWEST QUARTER

VALLEY VIEW ROAD



LEGEND

- SECTION CORNER FOUND / RECOVERED
- SECTION/QUARTER LINE
- RIGHT-OF-WAY LINE
- PARCEL LINE
- PLAT BOUNDARY
- AREA TO BE VACATED



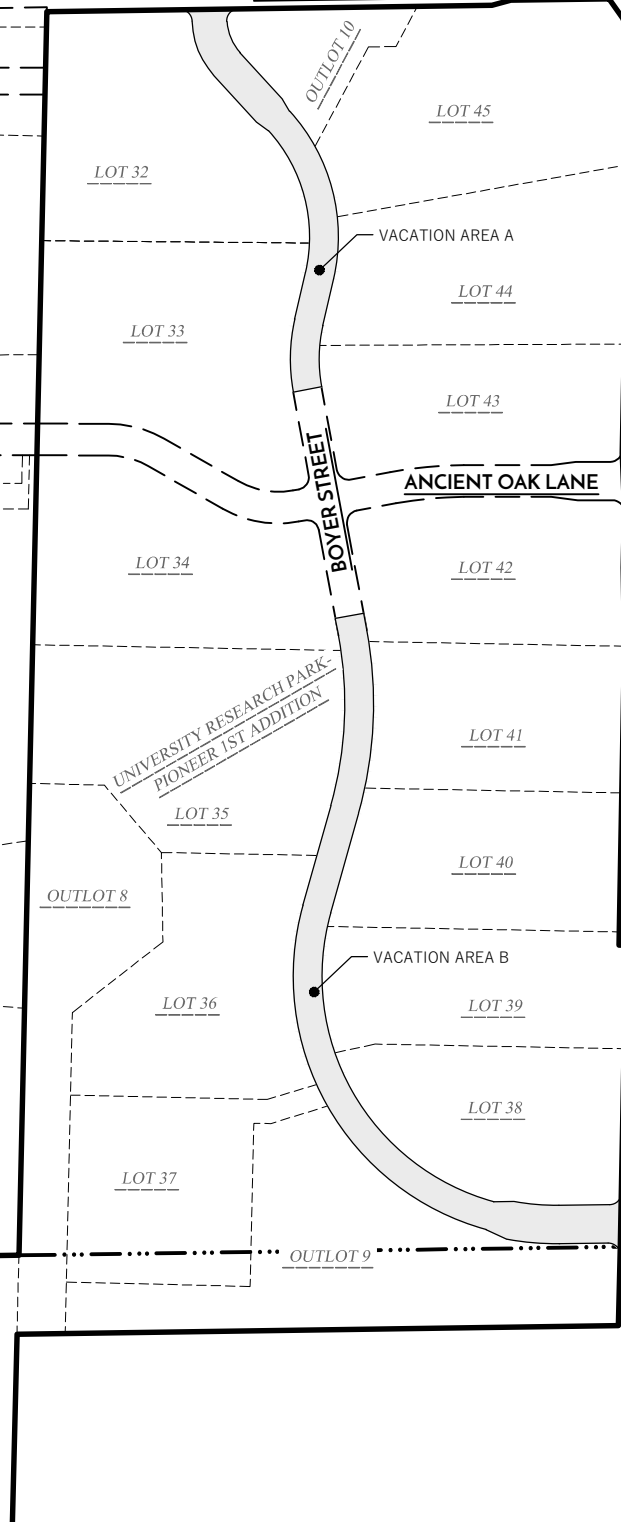
NORTH

0' 200' 400'

NOTES:

1. NORTH REFERENCE FOR THIS EXHIBIT ARE BASED ON THE WISCONSIN COORDINATE REFERENCE SYSTEM, DANE COUNTY, U.S. SURVEY FOOT, NAD 83 (2011). "WISCRS DANE," THE NORTH LINE OF THE NORTHWEST QUARTER OF SECTION 34 BEARS S 89° 11' 37" W
2. SEE SHEETS 2 AND 3 FOR DETAILS ON THE VACATED AREAS
3. SEE SHEET 4 FOR CURVE TABLE.

OUTLOT 7
UNIVERSITY RESEARCH PARK-
PIONEER 1ST ADDITION



C.T.H. "M" / S PLEASANT VIEW ROAD

S 1° 25' 45" W 2641.24' MON TO MON

EAST LINE OF THE NORTHWEST QUARTER

File: W:\2020\200770_URP - Vetter Property\dwg\200770-Boyer Street Vacation Exhibit.dwg Layout: EASEMENT RELEASE EXHIBIT (1) User: Zach Plotted: Nov 08, 2022 - 1:15pm



PREPARED BY:
300 EAST FRONT STREET
MOUNT HOREB, WI 53572
www.wyserengineering.com

PREPARED FOR:
UNIVERSITY RESEARCH PARK, INC.
510 CHARMANY DRIVE, SUITE 250
MADISON, WI 53719

SURVEYED BY: ---
DRAWN BY: ZMR
APPROVED BY: ZMR

PROJECT NO: 200770
SHEET NO: 1 of 4

EXHIBIT A

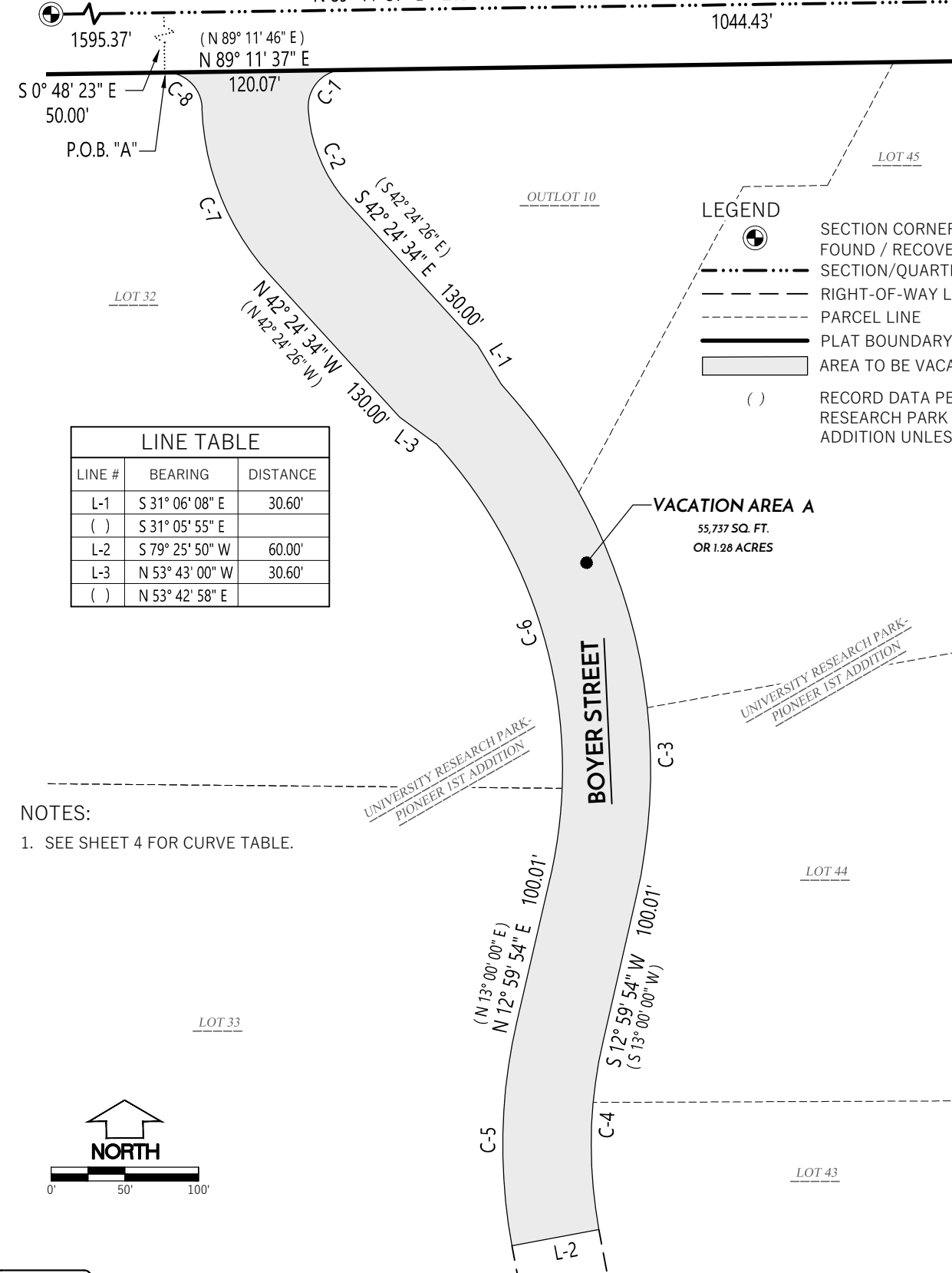
VACATION OF A PORTION OF THE RIGHT OF WAY OF BOYER STREET AS PLATTED BY THE UNIVERSITY RESEARCH PARK - PIONEER 1ST ADDITION

NORTH 1/4 CORNER SECTION 34-T7N-R8E

NORTHWEST CORNER SECTION 34-T7N-R8E

N 89° 11' 37" E 2639.80' MON TO MON

1044.43'



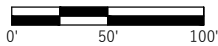
LEGEND

- SECTION CORNER FOUND / RECOVERED
- SECTION/QUARTER LINE
- RIGHT-OF-WAY LINE
- PARCEL LINE
- PLAT BOUNDARY
- AREA TO BE VACATED
- RECORD DATA PER UNIVERSITY RESEARCH PARK - PIONEER 1ST ADDITION UNLESS NOTED

LINE TABLE		
LINE #	BEARING	DISTANCE
L-1	S 31° 06' 08" E	30.60'
()	S 31° 05' 55" E	
L-2	S 79° 25' 50" W	60.00'
L-3	N 53° 43' 00" W	30.60'
()	N 53° 42' 58" E	

NOTES:

- SEE SHEET 4 FOR CURVE TABLE.



VACATION AREA A

55,737 SQ. FT.
OR 1.28 ACRES

File: W:\2020\200770_URP - Vetter Property\dwg\200770-Boyer Street Vacation Exhibit.dwg Layout: EASEMENT RELEASE EXHIBIT (2) User: Zach Plotted: Nov 08, 2022 - 1:14pm



PREPARED BY:
300 EAST FRONT STREET
MOUNT HOREB, WI 53572
www.wyserengineering.com

PREPARED FOR:
UNIVERSITY RESEARCH PARK, INC.
510 CHARMANY DRIVE, SUITE 250
MADISON, WI 53719



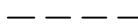



SURVEYED BY: ---
DRAWN BY: ZMR
APPROVED BY: ZMR

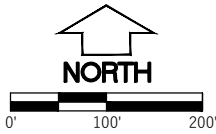
PROJECT NO: 200770
SHEET NO: 2 of 4

EXHIBIT A

VACATION OF A PORTION OF THE RIGHT OF WAY OF BOYER STREET AS PLATTED BY THE UNIVERSITY RESEARCH PARK - PIONEER 1ST ADDITION

LEGEND

-  SECTION CORNER FOUND / RECOVERED
-  SECTION/QUARTER LINE
-  RIGHT-OF-WAY LINE
-  PARCEL LINE
-  PLAT BOUNDARY
-  AREA TO BE VACATED
- () RECORD DATA PER UNIVERSITY RESEARCH PARK - PIONEER 1ST ADDITION UNLESS NOTED



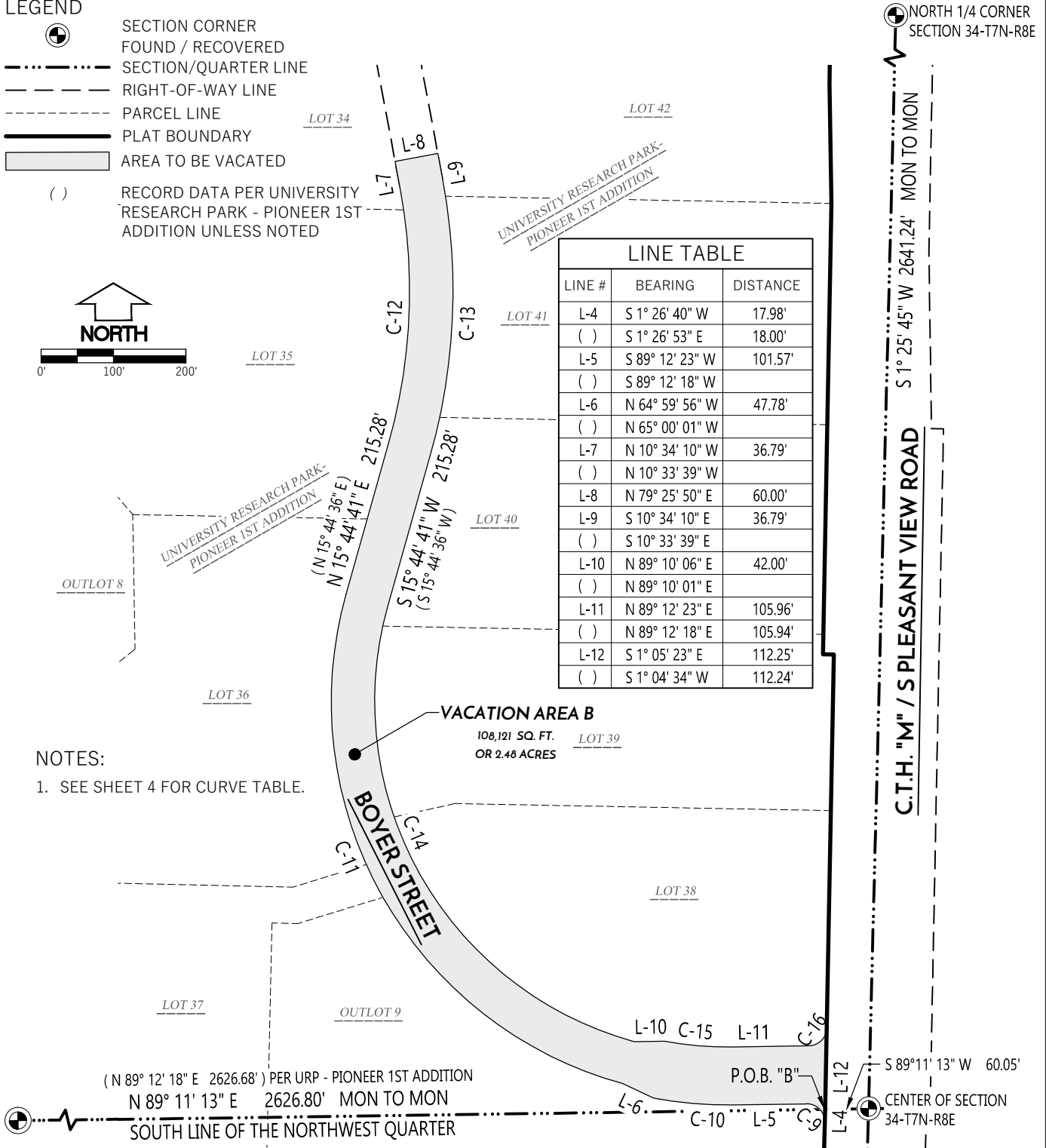
LINE TABLE		
LINE #	BEARING	DISTANCE
L-4	S 1° 26' 40" W	17.98'
()	S 1° 26' 53" E	18.00'
L-5	S 89° 12' 23" W	101.57'
()	S 89° 12' 18" W	
L-6	N 64° 59' 56" W	47.78'
()	N 65° 00' 01" W	
L-7	N 10° 34' 10" W	36.79'
()	N 10° 33' 39" W	
L-8	N 79° 25' 50" E	60.00'
L-9	S 10° 34' 10" E	36.79'
()	S 10° 33' 39" E	
L-10	N 89° 10' 06" E	42.00'
()	N 89° 10' 01" E	
L-11	N 89° 12' 23" E	105.96'
()	N 89° 12' 18" E	105.94'
L-12	S 1° 05' 23" E	112.25'
()	S 1° 04' 34" W	112.24'

VACATION AREA B

108,121 SQ. FT.
OR 2.48 ACRES

NOTES:

- SEE SHEET 4 FOR CURVE TABLE.



(N 89° 12' 18" E 2626.68') PER URP - PIONEER 1ST ADDITION
 N 89° 11' 13" E 2626.80' MON TO MON
 SOUTH LINE OF THE NORTHWEST QUARTER

NORTH 1/4 CORNER
SECTION 34-T7N-R8E

S 1° 25' 45" W 2641.24' MON TO MON
 C.T.H. "M" / S PLEASANT VIEW ROAD

S 89° 11' 13" W 60.05'
 CENTER OF SECTION
34-T7N-R8E



PREPARED BY:
300 EAST FRONT STREET
MOUNT HOREB, WI 53572
www.wyserengineering.com

PREPARED FOR:
UNIVERSITY RESEARCH PARK, INC.
510 CHARMANY DRIVE, SUITE 250
MADISON, WI 53719

SURVEYED BY: ---
DRAWN BY: ZMR
APPROVED BY: ZMR

PROJECT NO: 200770
SHEET NO: 3 of 4

EXHIBIT A

VACATION OF A PORTION OF THE RIGHT OF WAY OF BOYER STREET AS
PLATTED BY THE UNIVERSITY RESEARCH PARK - PIONEER 1ST ADDITION

CURVE TABLE							
CURVE #	LENGTH	RADIUS	DELTA	CHORD DIRECTION	CHORD LENGTH	TANGENT IN	TANGENT OUT
C-1	40.60'	25.00'	93° 02' 43"	S 42° 40' 16" W	36.28'	S 89° 11' 37" W	S 3° 51' 06" E
()			93° 02' 55"	N 69° 42' 55" W	94.49'	S 89° 11' 46" W	S 3° 51' 09" E
C-2	71.33'	106.00'	38° 33' 28"	S 23° 07' 50" E	70.00'	S 3° 51' 06" E	S 42° 24' 34" E
()			38° 33' 17"	S 23° 07' 47" E	69.99'	S 3° 51' 09" E	S 42° 24' 26" E
C-3	375.21'	388.00'	55° 24' 28"	S 14° 42' 20" E	360.76'	S 42° 24' 34" E	S 12° 59' 54" W
()			55° 24' 26"	S 14° 42' 13" E		S 42° 24' 26" E	S 13° 00' 00" W
C-4	128.34'	312.00'	23° 34' 03"	S 1° 12' 52" W	127.43'	S 12° 59' 54" W	S 10° 34' 10" E
()	128.30'		23° 33' 39"	S 1° 13' 11" W	127.40'	S 13° 00' 00" W	S 10° 33' 39" E
C-5	153.02'	372.00'	23° 34' 03"	N 1° 12' 52" E	151.94'	N 10° 34' 10" W	N 12° 59' 54" E
()	152.97'		23° 33' 39"	N 1° 13' 11" E	151.90'	N 10° 33' 39" W	N 13° 00' 00" E
C-6	317.19'	328.00'	55° 24' 28"	N 14° 42' 20" W	304.98'	N 12° 59' 54" E	N 42° 24' 34" W
()			55° 24' 26"	N 14° 42' 13" W	304.97'	N 13° 00' 00" E	N 42° 24' 26" W
C-7	125.47'	178.00'	40° 23' 19"	N 22° 12' 55" W	122.89'	N 42° 24' 34" W	N 2° 01' 16" W
()	125.68'		40° 27' 17"	N 22° 10' 47" W	123.09'	N 42° 24' 26" W	N 1° 57' 08" W
C-8	38.74'	25.00'	88° 47' 08"	N 46° 24' 49" W	34.98'	N 2° 01' 16" W	S 89° 11' 37" W
()	38.53'		88° 18' 11"	N 46° 39' 09" W	34.83'	N 1° 57' 08" W	S 89° 11' 46" W
C-9	40.25'	25.00'	92° 14' 17"	N 44° 40' 28" W	36.04'	N 1° 26' 40" E	S 89° 12' 23" W
()			92° 14' 35"	N 44° 40' 25" W		N 1° 26' 53" E	S 89° 12' 18" W
C-10	109.84'	557.00'	11° 17' 54"	N 85° 08' 41" W	109.66'	S 89° 12' 23" W	N 79° 29' 43" W
()				N 85° 08' 46" W		S 89° 12' 18" W	N 79° 29' 49" W
C-11	862.95'	547.00'	90° 23' 23"	N 29° 27' 00" W	776.20'	N 74° 38' 41" W	N 15° 44' 41" E
()				N 29° 27' 05" W		N 74° 38' 46" W	N 15° 44' 36" W
C-12	357.31'	778.00'	26° 18' 52"	N 2° 35' 16" E	354.18'	N 15° 44' 41" E	N 10° 34' 10" W
()	357.18'		26° 18' 15"	N 2° 35' 29" E	354.05'	N 15° 44' 36" E	N 10° 33' 39" W
C-13	384.87'	838.00'	26° 18' 52"	S 2° 35' 16" W	381.50'	S 10° 34' 10" E	S 15° 44' 41" W
()	384.72'		26° 18' 15"	S 2° 35' 29" W	381.35'	S 10° 33' 39" E	S 15° 44' 36" W
C-14	768.29'	487.00'	90° 23' 23"	S 29° 27' 00" E	691.06'	S 15° 44' 41" W	S 74° 38' 41" E
()			90° 23' 23"	S 29° 27' 05" E		S 15° 44' 36" W	S 74° 38' 46" E
C-15	94.06'	477.00'	11° 17' 54"	N 85° 08' 41" W	93.91'	S 79° 29' 43" E	N 89° 12' 23" E
()				N 85° 08' 46" W		S 79° 29' 49" E	N 89° 12' 18" E
C-16	38.45'	25.00'	88° 07' 01"	N 45° 08' 53" E	34.77'	N 89° 12' 23" E	N 1° 05' 23" E
()			88° 07' 45"	N 45° 08' 26" W		N 89° 12' 18" E	N 1° 04' 34" E

File: W:\2020\200770_URP - Vetter Property\dwg\200770-Boyer Street Vacation Exhibit.dwg Layout: EASEMENT RELEASE EXHIBIT (4) User: Zach Plotted: Nov 08, 2022 - 1:16pm



PREPARED BY:
300 EAST FRONT STREET
MOUNT HOREB, WI 53572
www.wyserengineering.com

PREPARED FOR:
UNIVERSITY RESEARCH PARK, INC.
510 CHARMANY DRIVE, SUITE 250
MADISON, WI 53719

SURVEYED BY: ---
DRAWN BY: ZMR
APPROVED BY: ZMR

PROJECT NO: 200770
SHEET NO: 4 of 4