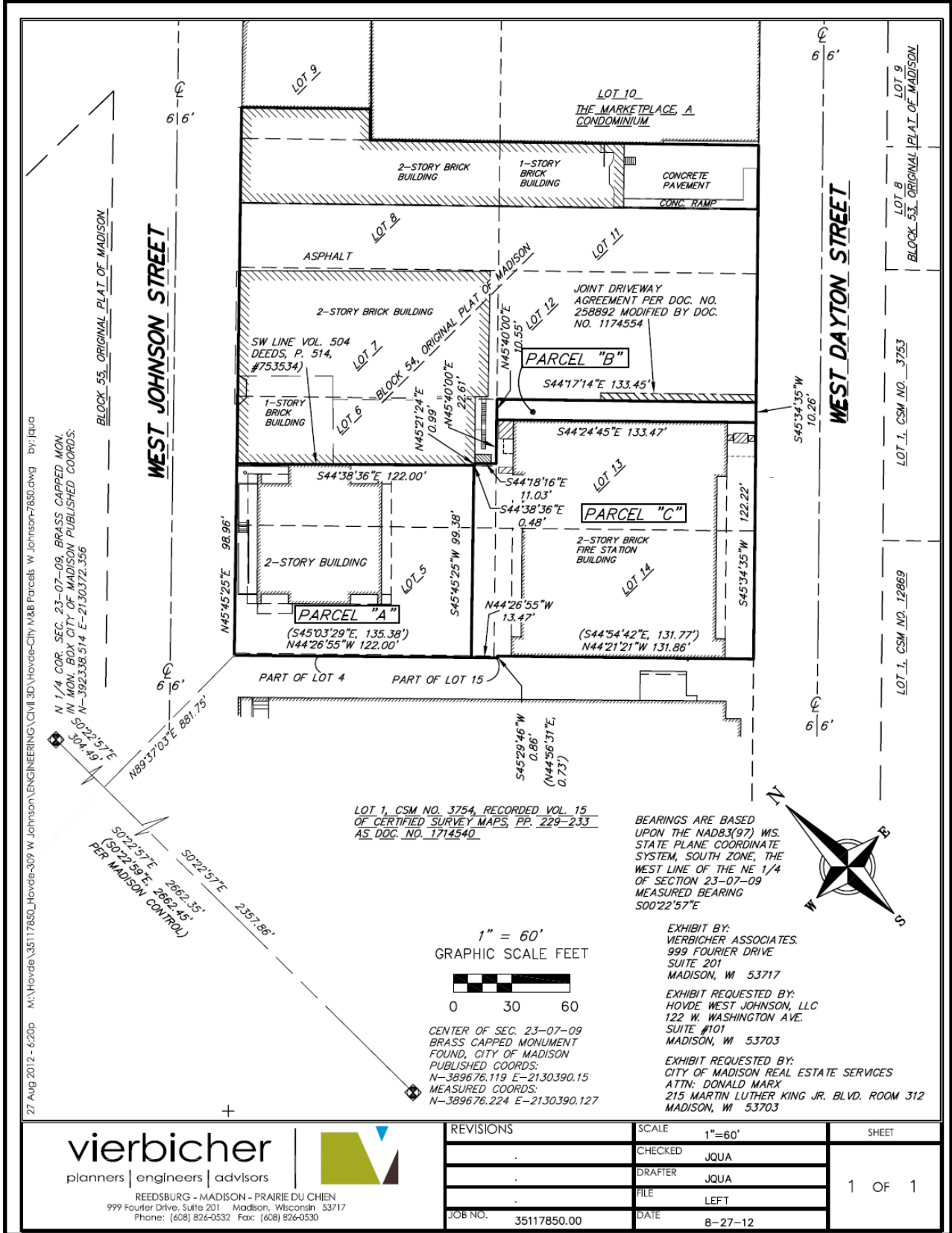


EXHIBIT A
(not to scale)



27 Aug 2012 - 6:20p N:\Hovde\35117850_Hovde-309 W Johnson\ENGINEERING\Civil\3D\Hovde-City M&B Parcels W Johnson\7850.dwg by: jqu

N 1/4 COR. SEC. 23-07-09, BRASS CAPPED MON. IN MON. BOX CITY OF MADISON PUBLISHED COORDS: N-392338.514 E-2130372.356

S022°57'E 304.49'
N89°37'03"E 881.75'
S022°57'E 2662.35'
S022°59'E 2662.45'
PER MADISON CONTROL

vierbicher
planners | engineers | advisors

REEDSBURG - MADISON - PRAIRIE DU CHIEN
999 Fourier Drive, Suite 201 Madison, Wisconsin 53717
Phone: (608) 826-0532 Fax: (608) 826-0530