

FIXED ROUTE
Operating Statistics For Periods Ending 5/31/2007 & 5/31/2008

CURRENT MONTH			YEAR TO DATE			
Actual 2007	Actual 2008	Variance 2007 to 2008		Actual 2007	Actual 2008	Variance 2007 to 2008
			Service Supplied			
480,292	467,576	(12,716)	Total (Vehicle) Miles *	2,326,908	2,329,278	2,370
31,888	31,134	(754)	Revenue Hours	156,092	155,756	(336)
35,724	35,073	(652)	Total (Vehicle) Hours *	174,045	174,230	185
			<i>Ridership</i>			
926,725	941,383	14,658	Revenue Passengers **	5,151,616	5,420,946	269,330
86,082	87,113	1,031	Transfers	395,783	419,455	23,672
<u>13,883</u>	<u>16,698</u>	<u>2,815</u>	Non-Revenue Rides	<u>52,549</u>	<u>65,010</u>	<u>12,461</u>
1,026,690	1,045,194	18,504	Total Passengers	5,599,948	5,905,411	305,463
			Service Quality			
3,077	3,073	(4)	Trips using Lifts	13,899	13,152	(747)
8	0	(8)	Passenger Accidents	56	50	(6)
22	0	(22)	Vehicle Accidents	106	133	27
			Fleet/Maintenance			
59	73	14	Road Calls	359	468	109
80	78	(2)	Actual Inspections	389	389	0
80	78	(2)	Scheduled Inspections	388	389	1

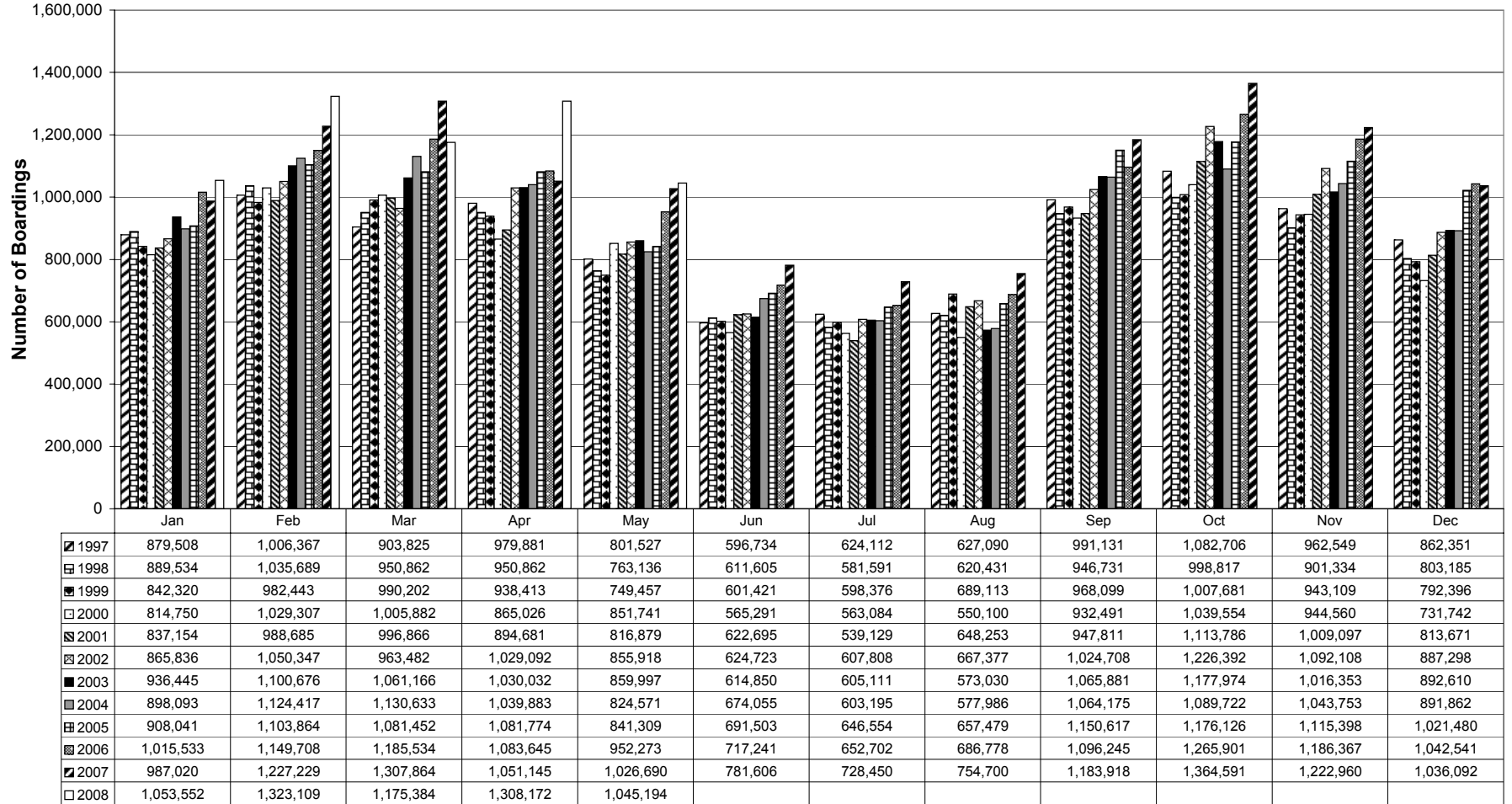
Note: N/A means the information was not available at the time of this report. YTD would also be incorrect.

* Vehicle Miles and Hours are for fixed route service only.

** Includes special events.

Key: A (negative variance) denotes a decrease in activity over 2007.
--

Fixed Route Monthly Ridership Comparison 1997 - 2008



1997
 1998
 1999
 2000
 2001
 2002
 2003
 2004
 2005
 2006
 2007
 2008

Year	Annual Ridership
1997	10,370,107
1998	10,097,867
1999	10,110,441
2000	10,065,495
2001	10,210,834
2002	10,895,089
2003	10,934,125
2004	10,962,345
2005	11,475,597
2006	12,034,468
2007	12,672,265

ROUTE PRODUCTIVITY COMPARISON--YEAR TO DATE--May 2008 vs. May 2007
(Routes sorted in order of 2008 passengers per revenue hour productivity)

ROUTES	RIDERSHIP, 2008 vs. 2007 Year to Date			Productivity, Trips per Revenue Hour				ROUTE KEY
	2008	2007	% Change	2008	2007	% Change	Routes < 60% of system avg.	
80 UW CAMPUS (Schedule changed September 2, 2007)	759,796	851,865	-10.8%	87.34	91.77	-4.8%		<p>Core Routes operate every day, from early a.m. to late p.m.: 2, 3, 4, 5, 6, 7, 13 (3 operates weekdays only; 7 operates wkends & holidays only).</p> <p>Commuter Routes operate on weekdays during peak hours: 11, 12, 14, 15, 25, 27, 28, 29, 37, 38, 44, 47, 48, 55, 56, 57, 58, 71, 72, 74</p> <p>Peripheral Routes operate from transfer points to outlying areas: 20, 21, 22, 24, 30, 32, 33, 40, 50, 51, 52, 73</p> <p>Connector Routes connect transfer points throughout the day: 16, 17, 18.</p> <p>Circulator Routes operate midday only: 1, 9, 34</p> <p>Other routes: 8 operates between the Capitol Square and Spring Harbor, weekends only. 19 operates like a core route between the Capitol Square and Allied Drive on weekdays. 39 operates as a commuter route during peak hours; operates like a circulator route midday. 67 connects with route 6 at the West Transfer Point; operates to/from West Towne Mall. 63 and 68 operate between the West Transfer Point and Prairie Town Center on weekends. 70 operates like a core route between the Capitol Square, Middleton & the West Transfer Point on weekdays.</p> <p>UW Campus Circulators 80, 81, 82, 85</p> <p>School Day Supplemental Routes 90, 91, 92, 93</p>
85 UW CAMPUS-PARK ST CIRCULATOR	168,051	162,964	3.1%	84.76	78.22	8.4%		
90-93 SUPPLEMENTARY SCHOOL SERVICE	543,173	481,628	12.8%	72.09	65.40	10.2%		
81-82 UW LATE NITE CIRCULATORS	134,807	154,225	-12.6%	53.66	54.29	-1.2%		
22 MENDOTA LOOP & 28 NTP-WTP COMMUTER	259,296	236,958	9.4%	50.07	46.56	7.5%		
2 WTP-NTP	468,250	436,169	7.4%	44.28	40.62	9.0%		
50 WTP-SCHROEDER-RAYMOND LOOP	69,510	54,601	27.3%	41.36	32.38	27.7%		
4 NTP-STP	323,670	327,109	-1.1%	40.60	41.02	-1.0%		
1 CAP SQUARE - UW	15,448	12,799	20.7%	36.09	32.63	10.6%		
29 SHERMAN COMMUTER	17,325	17,915	-3.3%	36.01	37.07	-2.9%		
37 & 38 PFLAUM RD-SHEBOYGAN AVE COMMUTER	173,648	163,326	6.3%	35.20	33.06	6.5%		
40 STP - ARBOR HILLS LOOP	72,000	56,631	27.1%	35.11	27.66	27.0%		
6 CITY VIEW DR-WTP & 67 WTP-WEST TOWNE	576,101	545,018	5.7%	34.87	32.85	6.1%		
72 MIDDLETON-CAPITOL SQUARE VIA BRANCH COMMUTER	52,879	40,329	31.1%	33.64	32.22	4.4%		
44 & 48 STP-UW CAMPUS & FITCHBURG COMMUTER RTES	51,983	43,076	20.7%	33.25	26.81	24.1%		
3 WTP-ETP	247,924	233,274	6.3%	33.21	31.37	5.9%		
SPECIAL EVENT SERVICE	14,106	7,351	91.9%	32.09	15.91	101.7%		
71 MIDDLETON-CAPITOL SQUARE VIA MARSHALL PARK COMMUTER	37,794	39,209	-3.6%	32.08	32.14	-0.2%		
9 ETP - UW CAMPUS & 33 HIESTAND LOOP	62,447	53,536	16.6%	31.50	27.66	13.9%		
16 STP - ETP	156,878	118,444	32.4%	31.29	23.65	32.3%		
56 & 57 PILGRIM-REETZ COMMUTER & MUIR FIELD COMMUTER	99,995	103,833	-3.7%	30.89	31.99	-3.4%		
14 & 15 RICHMOND HILL-WEXFORD RIDGE/JUNCTION RIDGE	337,885	312,269	8.2%	30.53	28.59	6.8%		
5 ETP-STP, 13 STP-CAP SQUARE & 18 STP-WTP	434,916	383,414	13.4%	30.30	26.86	12.8%		
21 LAKEVIEW LOOP	62,730	64,633	-2.9%	29.09	30.27	-3.9%		
58 GREENTREE COMMUTER	33,579	33,385	0.6%	26.57	27.01	-1.6%		
52 WTP-FITCHBURG (began operating Sept. 4, 2007)	28,207	NA	NA	25.28	NA	NA		
19 RED ARROW TR-CAP SQUARE	81,628	82,698	-1.3%	24.92	24.42	2.0%		
11 & 12 WTP-DUTCH MILL-CAP SQUARE	53,429	45,398	17.7%	24.88	20.70	20.2%		
27 NTP - UW CAMPUS COMMUTER	20,495	17,314	18.4%	24.49	19.51	25.5%		
47 ARBOR HILLS COMMUTER	34,078	25,061	36.0%	24.26	18.01	34.7%		
17 ETP-NTP, 20 NTP-EAST TOWNE & 30 ETP-EAST TOWNE	212,208	187,082	13.4%	24.09	21.28	13.2%		
70 MIDDLETON-CAPITOL SQUARE	61,564	68,027	-9.5%	22.46	24.08	-6.7%	X	
51 WTP-MUIR FIELD LOOP	23,175	26,404	-12.2%	22.37	25.51	-12.3%	X	
7 WTP-ETP (Weekends & Holidays Only)	47,327	46,212	2.4%	19.64	18.83	4.3%	X	
32 ACEWOOD-THOMPSON LOOP	16,864	13,534	24.6%	19.43	15.54	25.0%	X	
55 VERONA- WTP COMMUTER (began Sept. 19, 2005)	11,698	7,302	60.2%	19.01	12.26	55.1%	X	
25 AMERICAN CENTER	4,200	4,289	-2.1%	18.00	18.73	-3.9%	X	
8 CAP SQUARE-SPRING HARBOR (Weekends & Holidays Only)	11,907	10,633	12.0%	17.95	15.70	14.3%	X	
34 ETP-MATC & 39 ETP - DAIRY DRIVE	18,776	15,411	21.8%	16.73	13.73	21.8%	X	
73 WTP-OLD SAUK TRAILS (began 8/27/06; started serving Middleton 9/4/07)	55,867	64,452	-13.3%	16.39	28.15	-41.8%	X	
63 & 68 WTP-PRAIRIE TWN CTR (Weekends & Holidays only)	21,317	19,988	6.6%	15.53	14.26	8.9%	X	
74 MIDDLETON LOOP	10,712	3,453	210.2%	15.35	5.43	182.8%	X	
24 AIRPORT LOOP	17,493	13,272	31.8%	15.10	11.60	30.1%	X	
UNKNOWN ROUTE & ROAD BUS **	274	586	-53.2%	NA	NA	NA		
ROUTES DISCONTINUED DURING 2007:								
53 UW HOSP COMMUTER (service reduced 8/27/06-discontinued 8/31/07)	-	13,622	-100.0%	NA	18.49	NA		
89 PARKING RAMP SHUTTLE (operated January 2 - June 15, 2007)	-	1,249	NA	NA	1.06	NA		
SYSTEM TOTAL	5,905,411	5,599,948	5.5%	37.91	35.88	5.7%	22.75	
TOTAL WITHOUT CAMPUS CIRCULATORS (Routes 80-85)	4,842,757	4,430,894	9.3%	33.97	31.23	8.8%	20.38	

NOTE: Substantial changes were made across the system effective September 2, 2007. This will affect comparisons of current service to previous.

* Unknown Route refers to ridership data that isn't assigned to a route by the farebox (generally seen when farebox goes into "fallback mode").

Road buses are "extras" put into service to handle overloads.

ROUTE PERFORMANCE, Year to Date through May 2008

ROUTE	RIDERSHIP			Passengers/revenue hour	
	2008	2007	% change	2008	2007
1 CAP SQUARE - UW	15,448	12,799	20.7%	36.09	32.63
2 WTP-NTP	468,250	436,169	7.4%	44.28	40.62
3 WTP-ETP	247,924	233,274	6.3%	33.21	31.37
4 NTP-STP	323,670	327,109	-1.1%	40.60	41.02
5 ETP-STP, 13 STP-CAP SQUARE & 18 STP-WTP	434,916	383,414	13.4%	30.30	26.86
6 CITY VIEW DR-WTP & 67 WTP-WEST TOWNE	576,101	545,018	5.7%	34.87	32.85
7 WTP-ETP (Weekends & Holidays Only)	47,327	46,212	2.4%	19.64	18.83
8 CAP SQUARE-SPRING HARBOR (Weekends & Holidays Only)	11,907	10,633	12.0%	17.95	15.70
9 ETP - UW CAMPUS & 33 HIESTAND LOOP	62,447	53,536	16.6%	31.50	27.66
11 & 12 WTP-DUTCH MILL-CAP SQUARE	53,429	45,398	17.7%	24.88	20.70
14 & 15 RICHMOND HILL-WEXFORD RIDGE/JUNCTION RIDGE	337,885	312,269	8.2%	30.53	28.59
16 STP - ETP	156,878	118,444	32.4%	31.29	23.65
17 ETP-NTP, 20 NTP-EAST TOWNE & 30 ETP-EAST TOWNE	212,208	187,082	13.4%	24.09	21.28
19 RED ARROW TR-CAP SQUARE	81,628	82,698	-1.3%	24.92	24.42
21 LAKEVIEW LOOP	62,730	64,633	-2.9%	29.09	30.27
22 MENDOTA LOOP & 28 NTP-WTP COMMUTER	259,296	236,958	9.4%	50.07	46.56
24 AIRPORT LOOP	17,493	13,272	31.8%	15.10	11.60
25 AMERICAN CENTER	4,200	4,289	-2.1%	18.00	18.73
27 NTP - UW CAMPUS COMMUTER	20,495	17,314	18.4%	24.49	19.51
29 SHERMAN COMMUTER	17,325	17,915	-3.3%	36.01	37.07
32 ACEWOOD-THOMPSON LOOP	16,864	13,534	24.6%	19.43	15.54
34 ETP-MATC & 39 ETP - DAIRY DRIVE	18,776	15,411	21.8%	16.73	13.73
37 & 38 PFLAUM RD-SHEBOYGAN AVE COMMUTER	173,648	163,326	6.3%	35.20	33.06
40 STP - ARBOR HILLS LOOP	72,000	56,631	27.1%	35.11	27.66
44 & 48 STP-UW CAMPUS & FITCHBURG COMMUTER RTES	51,983	43,076	20.7%	33.25	26.81
47 ARBOR HILLS COMMUTER	34,078	25,061	36.0%	24.26	18.01
50 WTP-SCHROEDER-RAYMOND LOOP	69,510	54,601	27.3%	41.36	32.38
51 WTP-MUIR FIELD LOOP	23,175	26,404	-12.2%	22.37	25.51
52 WTP-FITCHBURG (began operating Sept. 4, 2007)	28,207	NA	NA	25.28	NA
53 UW HOSP COMMUTER (service reduced 8/27/06-discontinued 8/31/07)	-	13,622	-100.0%	NA	18.49
55 VERONA- WTP COMMUTER (began Sept. 19, 2005)	11,698	7,302	60.2%	19.01	12.26
56 & 57 PILGRIM-REETZ COMMUTER & MUIR FIELD COMMUTER	99,995	103,833	-3.7%	30.89	31.99
58 GREENTREE COMMUTER	33,579	33,385	0.6%	26.57	27.01
70 MIDDLETON-CAPITOL SQUARE	61,564	68,027	-9.5%	22.46	24.08
71 MIDDLETON-CAPITOL SQUARE VIA MARSHALL PARK COMMUTER	37,794	39,209	-3.6%	32.08	32.14
72 MIDDLETON-CAPITOL SQUARE VIA BRANCH COMMUTER	52,879	40,329	31.1%	33.64	32.22
73 WTP-OLD SAUK TRAILS (began 8/27/06; started serving Middleton 9/4/07)	55,867	64,452	-13.3%	16.39	28.15
74 MIDDLETON LOOP	10,712	3,453	210.2%	15.35	5.43
MIDDLETON ROUTES TOTAL	218,816	215,470	1.6%	22.80	26.21
63 & 68 WTP-PRAIRIE TWN CTR (Weekends & Holidays only)	21,317	19,988	6.6%	15.53	14.26
89 PARKING RAMP SHUTTLE (operated January 2 - June 15, 2007)	-	1,249	NA	NA	1.06
90-93 SUPPLEMENTARY SCHOOL SERVICE	543,173	481,628	12.8%	72.09	65.40
80 UW CAMPUS (Schedule changed September 2, 2007)	759,796	851,865	-10.8%	87.34	91.77
81-82 UW LATE NITE CIRCULATORS	134,807	154,225	-12.6%	53.66	54.29
85 UW CAMPUS-PARK ST CIRCULATOR	168,051	162,964	3.1%	84.76	78.22
SPECIAL EVENT SERVICE	14,106	7,351	91.9%	32.09	15.91
UNKNOWN ROUTE & ROAD BUS **	274	586	-53.2%	NA	NA
SYSTEM TOTAL	5,905,411	5,599,948	5.5%	37.91	35.88
TOTAL WITHOUT CAMPUS CIRCULATORS (Routes 80-85)	4,842,757	4,430,894	9.3%	33.97	31.23

NOTE: Substantial changes were made across the system effective September 2, 2007. This will affect comparisons of current service to previous.

* Unknown Route refers to ridership data that isn't assigned to a route by the farebox (generally seen when farebox goes into "fallback mode").

Road buses are "extras" put into service to handle overloads.

ParaTransit
Operating Statistics For Periods Ending 5/31/2007 & 5/31/2008

CURRENT MONTH				YEAR TO DATE		
Actual 2007	Actual 2008	Variance 2007 to 2008		Actual 2007	Actual 2008	Variance 2007 to 2008
			Service Supplied Data			
1,129	1,130	1	No. of Clients riding the System	1,494	1,447	(47)
			<i>Ridership</i>			
5,008	5,306	298	Directly Operated Service	22,543	24,332	1,789
<u>18,125</u>	<u>17,344</u>	(781)	ADA Contracted Services	<u>90,725</u>	<u>88,239</u>	(2,486)
23,133	22,650	(483)	Total ADA Ridership *	113,268	112,571	(697)
1,673	1,736	63	Group Access *	8,108	8,453	345
332	509	177	Total No-shows	2,187	2,591	404
			Service Quality Data			
0	0	0	Passenger Accidents	13	8	(5)
2	2	0	Vehicle Accidents	3	14	11
			Fleet/Maintenance Data			
0	2	2	Road Calls	7	9	2
12	12	0	Actual Inspections	47	55	8
10	12	2	Scheduled Inspections	46	54	8

Note: N/A means the information was not available at the time of this report. The YTD would also be incorrect as it only reflects the information that was available from previous months.

* ADA Ridership does not include Group Access.

Key: A (negative variance) denotes a decrease in activity over 2007.

**Paratransit Performance Indicators
May, 2008**

<u>Revenue Indicators</u>	Metro Plus YTD		Fixed Route YTD	
	May. 2007	May. 2008	May. 2007	May. 2008
Operating Revenue/ Operating Cost	41.3%	<i>Financial</i>	29.6%	<i>Financial</i>
Passenger Revenue/ Total Passenger Trips	\$1.04	<i>info</i>	\$0.74	<i>info</i>
		<i>not available</i>		<i>not available</i>
		<i>for May</i>		<i>for May</i>
		<i>2008</i>		<i>2008</i>
<u>Expense Indicators</u>				
Operating Cost/Passenger Trip	\$26.64		\$2.65	

<u>Operations</u>	Metro Plus			
	May. 2007	May. 2008	YTD 2007	YTD 2008
Total Trips	23,133	22,650	113,268	112,571
Rides Cancelled	3,393	3,667	19,069	20,612
Cancellation Rate	14.7%	16.2%	16.8%	18.3%
No Shows	332	509	2,187	2,591
No Shows/Rides Provided	1.4%	2.2%	1.9%	2.3%
Number of Clients Provided Service	1129	1,130	1,494	1,447
Average Trips/Client	20.5	20.0	75.8	77.8
DDS Trips	13,138	12,927	64,028	65,102
Subscription Trips	12,700	12,765	61,978	63,376
DDS Subscription Trips	8,179	8,063	39,495	40,853
D2D Trips	17,060	16,665	82,013	81,566
Lv Attended Trips	6,253	6,126	29,260	30,333
Maintenance Inspections Conducted/Scheduled	120.0%	100.0%	102.2%	101.9%

<u>Number of Trips by Provider YTD</u>	Metro Direct	Laidlaw	Badger	Trans. Sol.	Badger Bus	Total
Ambulatory	11,734	9,581	27,819	15,546	13,016	77,696
Non-Ambulatory	12,598	12,160	-	987	9,130	34,875
Percentage	21.61%	19.31%	24.71%	14.69%	19.67%	100.00%

<u>Customer Service YTD</u>	Metro Direct	Laidlaw	Badger	Transit Sol	Badger Bus	Total
Rides Provided	24,332	21,741	27,819	16,533	22,146	112,571
Customer Complaints	53	40	79	16	11	199
Customer Compliments	3	0	1	0	0	4
Customer Suggestions	3	0	2	0	2	7
Complaints/1000 passenger trips	2.18	1.84	2.84	0.97	0.50	1.77
Late Service Reports (2)	-	-	-	-	-	-
Late Service Reports/1000 passenger trips	-	-	-	-	-	-

<u>On-Time Performance, May 2008</u>	Metro Direct	Laidlaw	Badger	Transit Sol.	Badger Bus
	90%	94%	95%	95%	98%

<u>ADA Certifications, May 2008</u>	Clients	1-19 Trips	>20 - 40<	<40 Trips/mo	TTL Trips
Category 1	1,250	178	170	153	14,968
Category 2	44	1	0	0	3
Category 2/3	97	14	2	1	194
Category 3	1,977	407	109	33	7,435
Total		3,368			22,600

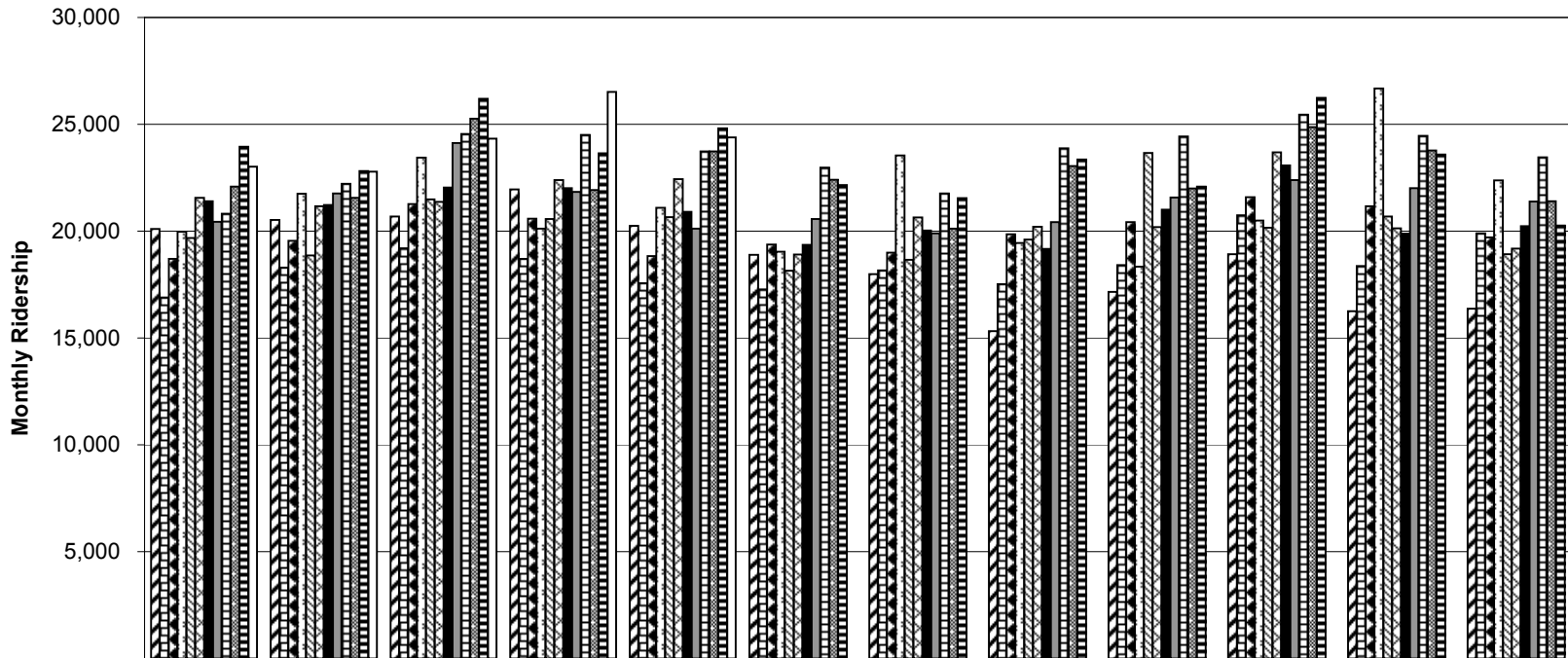
Monthly New Certification	28
Monthly Denied Applications	2

(1) Passenger Revenue does not include Group Access revenue.

(2) Late Service Reports are based on passenger feedback. Not all late reports are chargeable to the vendor.

NOTE: Reported expenses do not include depreciation, debt principal, or fixed assets.

Monthly Paratransit Ridership, 1997 - 2008 (includes Group Access)



	Jan	Feb	Mar	Apr	May	Jun	Jul	Aug	Sep	Oct	Nov	Dec
1997	20,102	20,518	20,683	21,948	20,247	18,885	17,982	15,323	17,151	18,914	16,250	16,370
1998	16,897	18,293	19,204	18,705	17,571	17,275	18,164	17,526	18,406	20,742	18,367	19,900
1999	18,698	19,550	21,272	20,582	18,839	19,366	18,995	19,847	20,416	21,591	21,173	19,710
2000	19,970	21,748	23,433	20,110	21,097	19,040	23,548	19,447	18,333	20,495	26,681	22,374
2001	19,676	18,866	21,482	20,567	20,649	18,145	18,656	19,606	23,657	20,156	20,689	18,918
2002	21,563	21,173	21,377	22,386	22,436	18,910	20,644	20,208	20,191	23,681	20,126	19,180
2003	21,401	21,223	22,043	22,012	20,902	19,352	20,030	19,175	21,012	23,082	19,881	20,238
2004	20,435	21,770	24,126	21,831	20,117	20,575	19,902	20,429	21,571	22,395	22,009	21,378
2005	20,820	22,210	24,549	24,509	23,734	22,976	21,758	23,872	24,425	25,457	24,465	23,460
2006	22,087	21,553	25,257	21,923	23,725	22,409	20,115	23,047	22,000	24,873	23,779	21,405
2007	23,945	22,814	26,194	23,641	24,806	22,155	21,549	23,353	22,078	26,239	23,590	20,269
2008	23,015	22,787	24,327	26,509	24,386							

1997
 1998
 1999
 2000
 2001
 2002
 2003
 2004
 2005
 2006
 2007
 2008

Year	Annual Ridership
1997	224,373
1998	221,050
1999	240,039
2000	256,276
2001	241,067
2002	251,875
2003	250,351
2004	256,538
2005	282,235
2006	272,173
2007	280,633

Note: Annual Ridership includes Group Access.